

SAP BusinessObjects BI: Semantic Layer – Web Intelligence

Hana Online & Direct Access to Hana views, authored BEx UNX, Linked UNX, and Big Numbers

Pierpaolo Vezzosi, Director Product Management

SAP

Expert Webinar Series

Legal disclaimer

The information in this presentation is confidential and proprietary to SAP and may not be disclosed without the permission of SAP. This presentation is not subject to your license agreement or any other service or subscription agreement with SAP. SAP has no obligation to pursue any course of business outlined in this document or any related presentation, or to develop or release any functionality mentioned therein. This document, or any related presentation and SAP's strategy and possible future developments, products and or platforms directions and functionality are all subject to change and may be changed by SAP at any time for any reason without notice. The information in this document is not a commitment, promise or legal obligation to deliver any material, code or functionality. This document is provided without a warranty of any kind, either express or implied, including but not limited to, the implied warranties of merchantability, fitness for a particular purpose, or non-infringement. This document is for informational purposes and may not be incorporated into a contract. SAP assumes no responsibility for errors or omissions in this document, except if such damages were caused by SAP's willful misconduct or gross negligence.

All forward-looking statements are subject to various risks and uncertainties that could cause actual results to differ materially from expectations. Readers are cautioned not to place undue reliance on these forward-looking statements, which speak only as of their dates, and they should not be relied upon in making purchasing decisions.

Agenda

Access to HANA

- Direct
- Online

Access to Bex query

- Bex query universe

Linked Universes

Access methods in BI 4.1

	Advanced	Smart
HANA	Universe	Automated universe
BW		Direct access
3rd Party	Universe	

Access methods in BI 4.1

Make it customized !

Make it easy !

	Advanced	Smart
HANA	Universe	Automated universe
BW		Direct access
3rd Party	Universe	

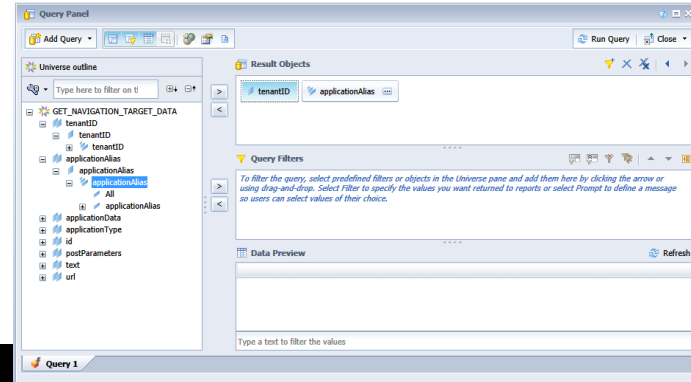
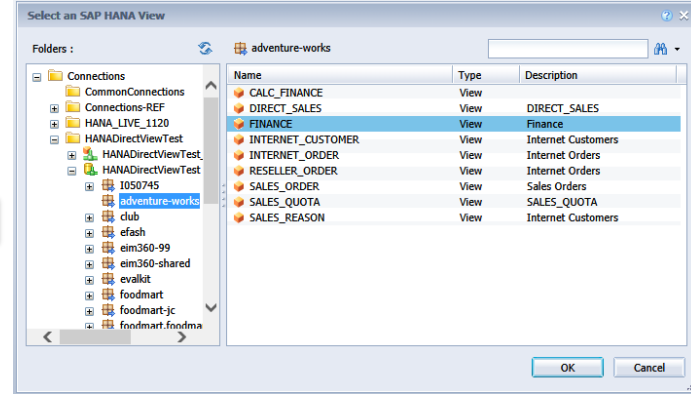
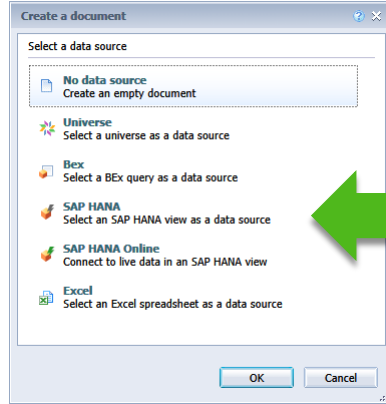
Access methods in BI 4.2 SP3

	Advanced	Smart
HANA	Universe Automated universe	Direct access Online access
BW	Automated universe	Direct access
3rd Party	Universe Linked universe	

SAP HANA Direct Access

Direct access to avoid creating a UNX on SAP HANA

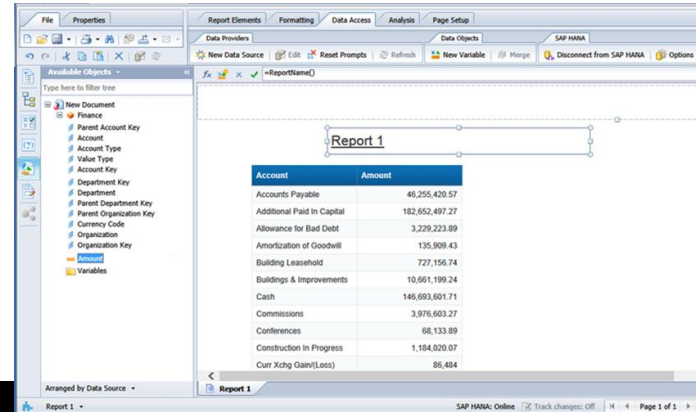
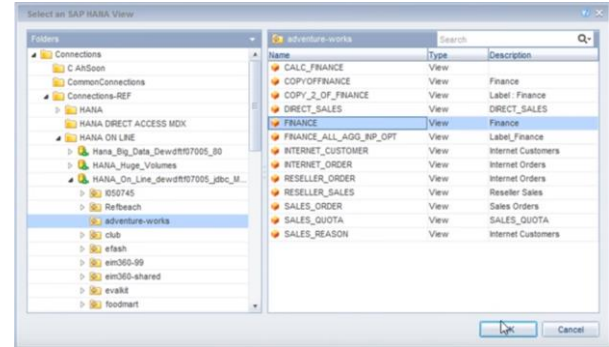
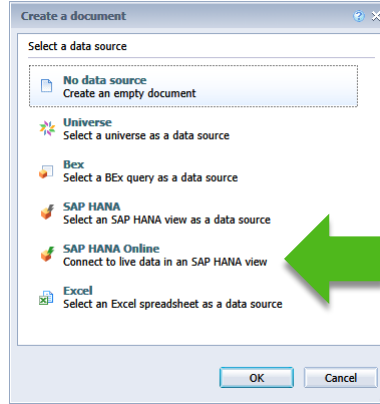
- From Web Intelligence, connect directly to HANA Views
- No universe authoring in information design tool required
- Browse HANA views using a relational or OLAP connection
- Relational: Hana JDBC
- OLAP: MDX Access (HANA hierarchies are supported)
- Usual Web Intelligences workflow with query panel



SAP HANA Online Mode

HANA delegation for exploratory analysis

- From Web Intelligence, connect directly to HANA Views
- No universe authoring in information design tool required
- No query panel to define queries
- No relational access
- Only relational access
- Web Intelligence calculations are delegated to HANA whenever possible
- Optional: Go back to standard mode to get additional reporting features



Which one to choose?

HANA online is the best for exploration (fast, best practices enabled by default)

HANA direct on relational has all the functionality and the best performance/cost ratio for reporting

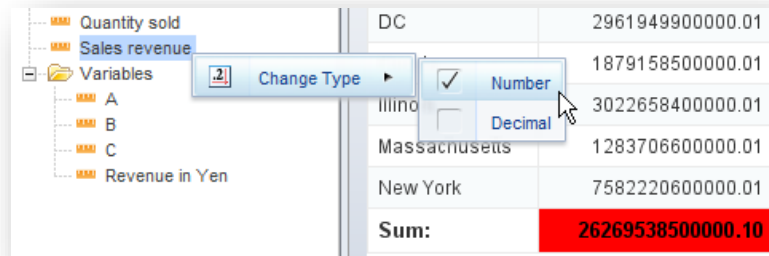
HANA direct on OLAP, if you need hierarchies

HANA via a universe, if you need to customize your access to HANA

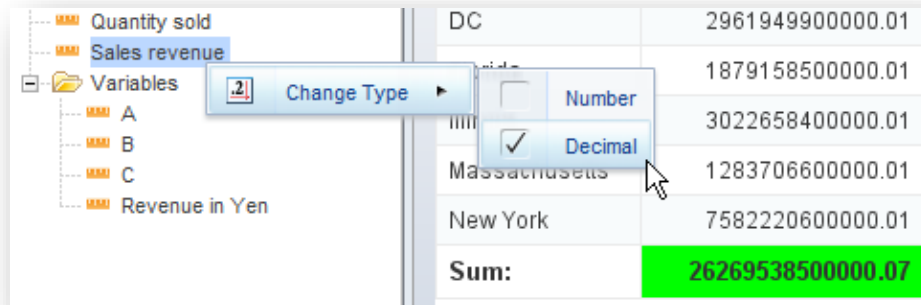
High Precision Decimal (aka 'big number')

Improve the calculation precision

- Increased precision from 15 to 40 digits!
- Integration of the IEEE "Decimal Floating Point" format
- New Web Intelligence calculator function to convert to Decimal format
- Contextual menu to convert any measure into Decimal format



Quantity sold	DC	2961949900000.01
Sales revenue		1879158500000.01
Variables		3022658400000.01
A	Illinois	1283706600000.01
B	Massachusetts	7582220600000.01
C	New York	7582220600000.01
Revenue in Yen		
Sum:		26269538500000.10

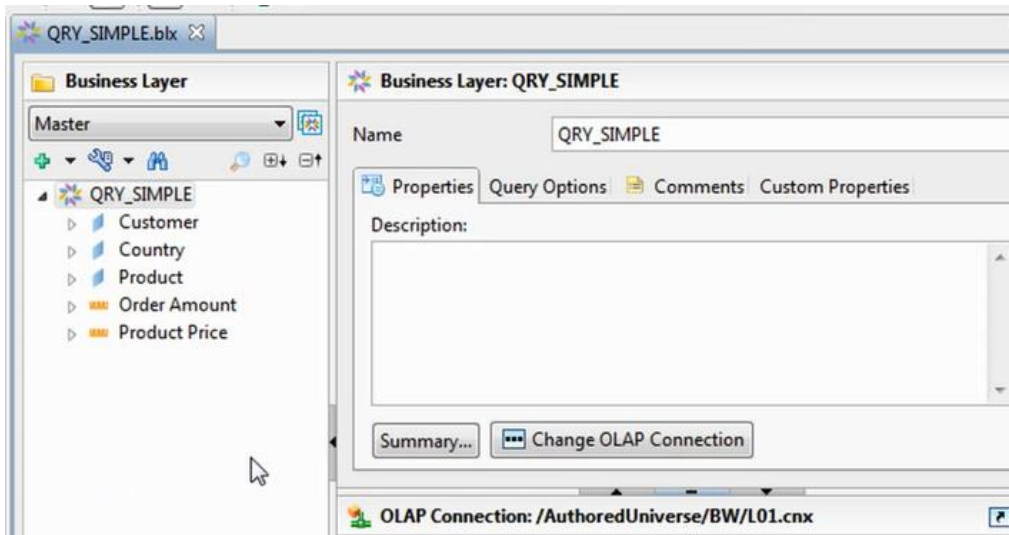


Quantity sold	DC	2961949900000.01
Sales revenue		1879158500000.01
Variables		3022658400000.01
A	Illinois	1283706600000.01
B	Massachusetts	7582220600000.01
C	New York	7582220600000.01
Revenue in Yen		
Sum:		26269538500000.07

Universe on BEx query

Author a UNX universe on a Bex query to improve user adoption

- Display BEx query in more user-friendly way
- Create universe with Information Designer Tool
- Select a BEx query and auto-generate a business layer
- Rename objects, regroup objects in meaningful folders, or delete unnecessary objects
- BEx authored universes use the BICS connector
- Only works as a single-source universe
- Refresh universe when underlying BEx query changes

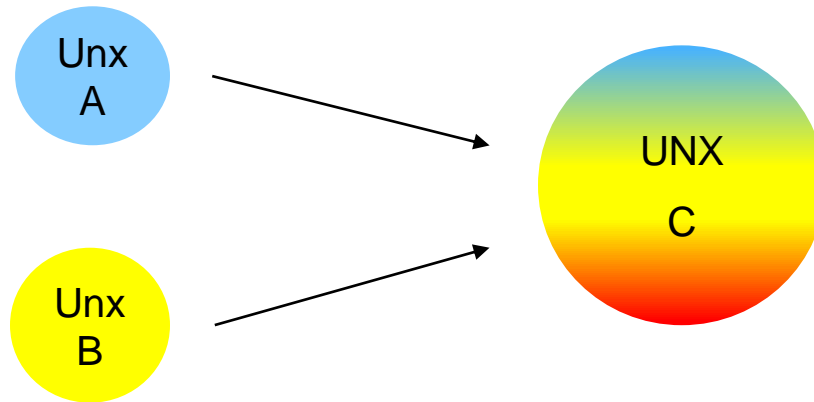


Linked universes

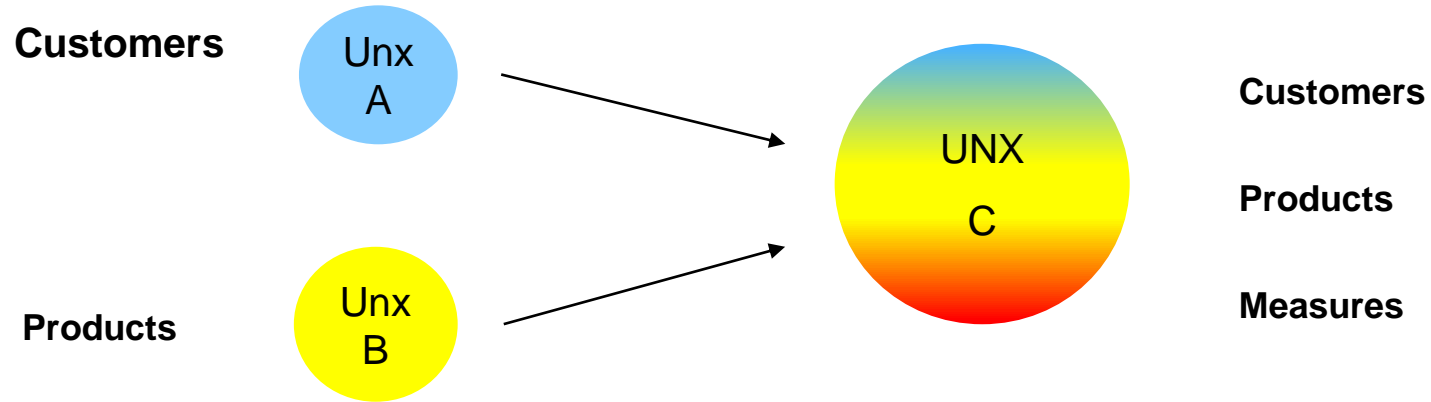
Inherit data foundations and business layers to simplify projects

Linked UNX universes

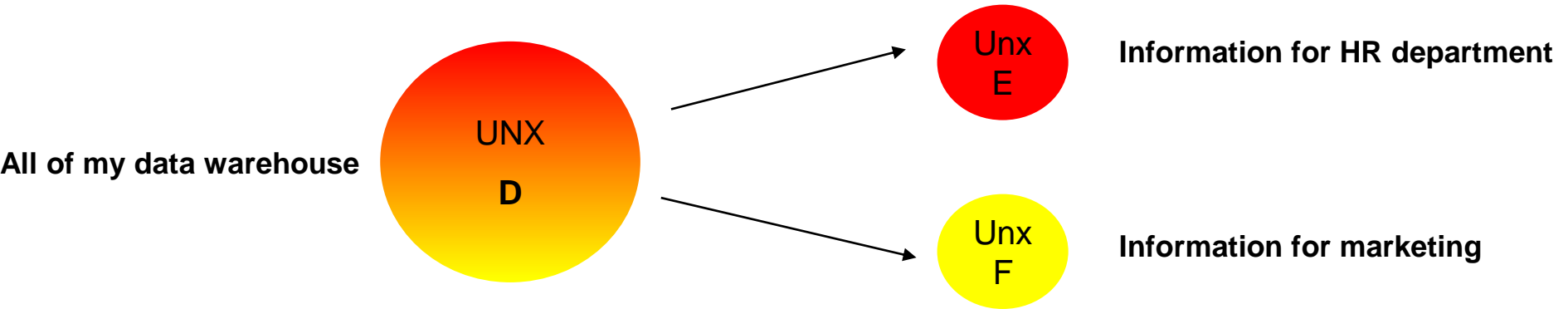
- Deliver a modular approach to universe building in the Information Design Tool (IDT)
- UNX linking capability at parity with UNV universes
- Insert the objects of a master UNX into a derived UNX universe, with automatic updates propagation to the derived universe



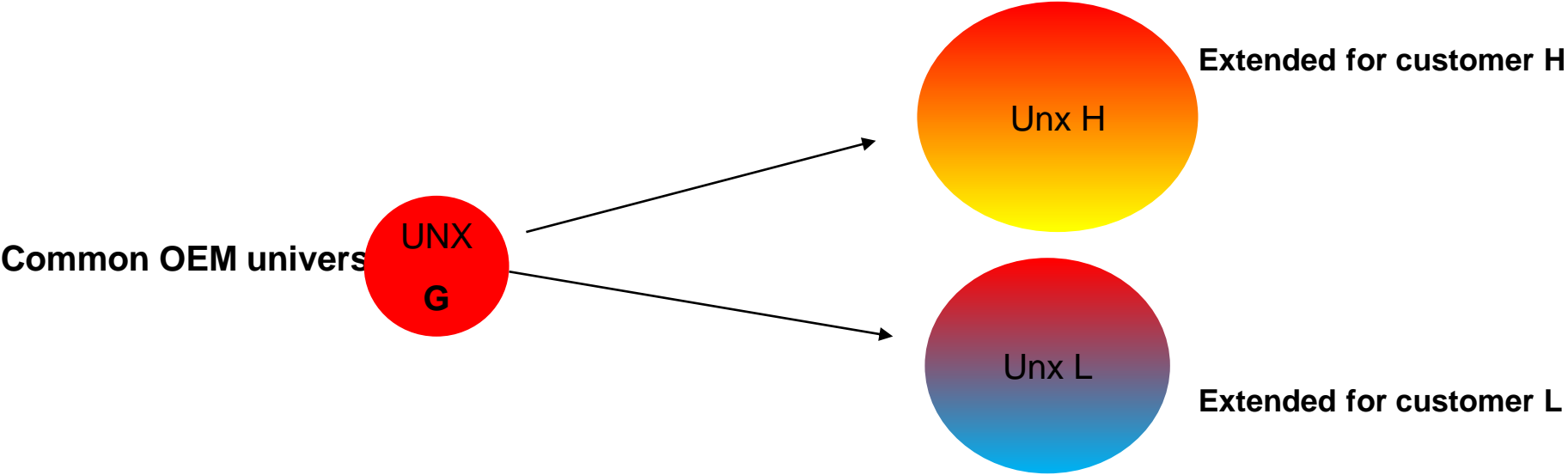
Component use case



Kernel use case



OEM approach



Agenda

Access to HANA

- Direct
- Online

Access to Bex query

- Bex query universe

Linked Universes



Thank You

SAP BusinessObjects BI: Semantic Layer - Hana Online & Direct Access to Hana views (authored BEx UNX, Linked UNX, and Big Numbers)

Pierpaolo Vezzosi, Director Product Management

SAP

Expert Webinar Series

Q&A

© 2016 SAP SE oder ein SAP-Konzernunternehmen. Alle Rechte vorbehalten.

Weitergabe und Vervielfältigung dieser Publikation oder von Teilen daraus sind, zu welchem Zweck und in welcher Form auch immer, ohne die ausdrückliche schriftliche Genehmigung durch SAP SE oder ein SAP-Konzernunternehmen nicht gestattet.

SAP und andere in diesem Dokument erwähnte Produkte und Dienstleistungen von SAP sowie die dazugehörigen Logos sind Marken oder eingetragene Marken der SAP SE (oder von einem SAP-Konzernunternehmen) in Deutschland und verschiedenen anderen Ländern weltweit.

Weitere Hinweise und Informationen zum Markenrecht finden Sie unter <http://global.sap.com/corporate-de/legal/copyright/index.epx>.

Die von SAP SE oder deren Vertriebsfirmen angebotenen Softwareprodukte können Softwarekomponenten auch anderer Softwarehersteller enthalten.

Produkte können länderspezifische Unterschiede aufweisen.

Die vorliegenden Unterlagen werden von der SAP SE oder einem SAP-Konzernunternehmen bereitgestellt und dienen ausschließlich zu Informationszwecken.

Die SAP SE oder ihre Konzernunternehmen übernehmen keinerlei Haftung oder Gewährleistung für Fehler oder Unvollständigkeiten in dieser Publikation.

Die SAP SE oder ein SAP-Konzernunternehmen steht lediglich für Produkte und Dienstleistungen nach der Maßgabe ein, die in der Vereinbarung über die jeweiligen Produkte und Dienstleistungen ausdrücklich geregelt ist. Keine der hierin enthaltenen Informationen ist als zusätzliche Garantie zu interpretieren.

Insbesondere sind die SAP SE oder ihre Konzernunternehmen in keiner Weise verpflichtet, in dieser Publikation oder einer zugehörigen Präsentation dargestellte Geschäftsabläufe zu verfolgen oder hierin wiedergegebene Funktionen zu entwickeln oder zu veröffentlichen. Diese Publikation oder eine zugehörige Präsentation, die Strategie und etwaige künftige Entwicklungen, Produkte und/oder Plattformen der SAP SE oder ihrer Konzernunternehmen können von der SAP SE oder ihren Konzernunternehmen jederzeit und ohne Angabe von Gründen unangekündigt geändert werden.

Die in dieser Publikation enthaltenen Informationen stellen keine Zusage, kein Versprechen und keine rechtliche Verpflichtung zur Lieferung von Material, Code oder Funktionen dar. Sämtliche vorausschauenden Aussagen unterliegen unterschiedlichen Risiken und Unsicherheiten, durch die die tatsächlichen Ergebnisse von den Erwartungen abweichen können. Die vorausschauenden Aussagen geben die Sicht zu dem Zeitpunkt wieder, zu dem sie getätigt wurden. Dem Leser wird empfohlen, diesen Aussagen kein übertriebenes Vertrauen zu schenken und sich bei Kaufentscheidungen nicht auf sie zu stützen.

© 2016 SAP SE or an SAP affiliate company. All rights reserved.

No part of this publication may be reproduced or transmitted in any form or for any purpose without the express permission of SAP SE or an SAP affiliate company.

SAP and other SAP products and services mentioned herein as well as their respective logos are trademarks or registered trademarks of SAP SE (or an SAP affiliate company) in Germany and other countries. Please see <http://global12.sap.com/corporate-en/legal/copyright/index.epx> for additional trademark information and notices.

Some software products marketed by SAP SE and its distributors contain proprietary software components of other software vendors.

National product specifications may vary.

These materials are provided by SAP SE or an SAP affiliate company for informational purposes only, without representation or warranty of any kind, and SAP SE or its affiliated companies shall not be liable for errors or omissions with respect to the materials. The only warranties for SAP SE or SAP affiliate company products and services are those that are set forth in the express warranty statements accompanying such products and services, if any. Nothing herein should be construed as constituting an additional warranty.

In particular, SAP SE or its affiliated companies have no obligation to pursue any course of business outlined in this document or any related presentation, or to develop or release any functionality mentioned therein. This document, or any related presentation, and SAP SE's or its affiliated companies' strategy and possible future developments, products, and/or platform directions and functionality are all subject to change and may be changed by SAP SE or its affiliated companies at any time for any reason without notice. The information in this document is not a commitment, promise, or legal obligation to deliver any material, code, or functionality. All forward-looking statements are subject to various risks and uncertainties that could cause actual results to differ materially from expectations. Readers are cautioned not to place undue reliance on these forward-looking statements, which speak only as of their dates, and they should not be relied upon in making purchasing decisions.