

# SAP BusinessObjects BI

Installer Enhancements, Upgrade Management Tool, Parallel Queries, Server Group

Exclusivity & Enhanced Publication Rules

Samarth Narayan, Product Management, SAP Analytics

**Expert Webinar Series**

# Legal disclaimer

---

The information in this presentation is confidential and proprietary to SAP and may not be disclosed without the permission of SAP. This presentation is not subject to your license agreement or any other service or subscription agreement with SAP. SAP has no obligation to pursue any course of business outlined in this document or any related presentation, or to develop or release any functionality mentioned therein. This document, or any related presentation and SAP's strategy and possible future developments, products and or platforms directions and functionality are all subject to change and may be changed by SAP at any time for any reason without notice. The information in this document is not a commitment, promise or legal obligation to deliver any material, code or functionality. This document is provided without a warranty of any kind, either express or implied, including but not limited to, the implied warranties of merchantability, fitness for a particular purpose, or non-infringement. This document is for informational purposes and may not be incorporated into a contract. SAP assumes no responsibility for errors or omissions in this document, except if such damages were caused by SAP's willful misconduct or gross negligence.

All forward-looking statements are subject to various risks and uncertainties that could cause actual results to differ materially from expectations. Readers are cautioned not to place undue reliance on these forward-looking statements, which speak only as of their dates, and they should not be relied upon in making purchasing decisions.

# Agenda

---

**BI 4.2 comes with some really handy enhancements. Some of them will be described in this session:**

- ❑ **BI Platform Installer Enhancements Overview –**

- ❑ Phase-wise Install
- ❑ Web Applications Deploy Later
- ❑ Splash Screen launch optimization

- ❑ **UMT Enhancements Overview –**

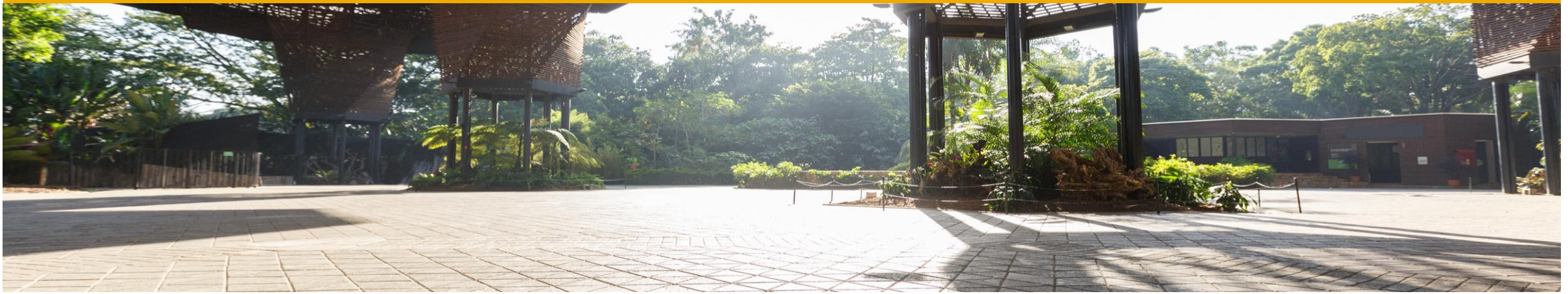
- ❑ Export Pending/Recurring instances
- ❑ Delta Copy Changes
- ❑ Specify Log Level

- ❑ **Server Group Exclusivity – BI Platform**

- ❑ **Parallel Queries – Web Intelligence**

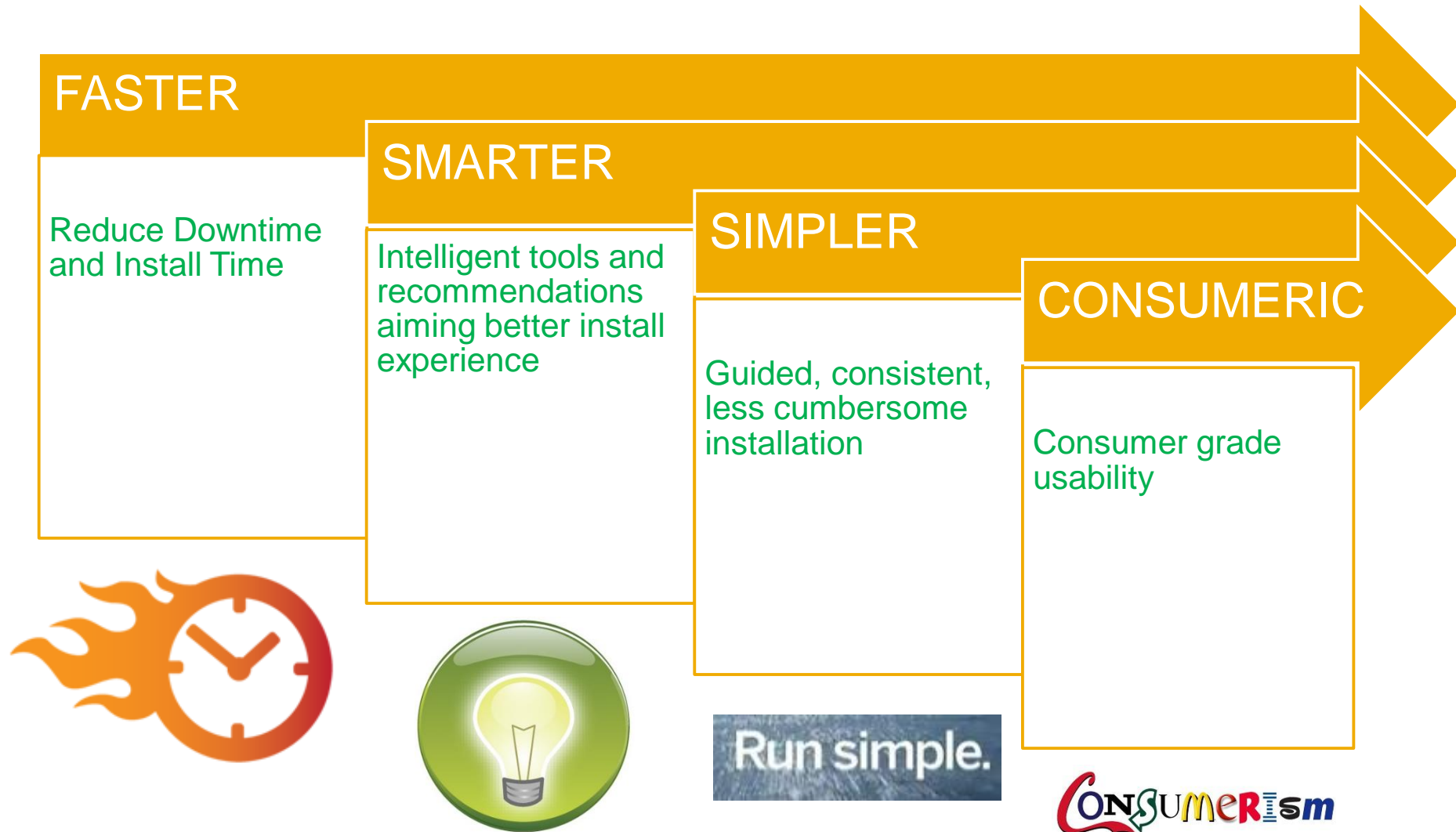
- ❑ **Enhanced Publication Rules – Web Intelligence**





# **SAP BusinessObjects BI Platform Installer Enhancements**

# SAP BusinessObjects BI Platform Installer – Themes/Objectives



# Feature Overview: Phase-wise Deployment – How it works?

- ❑ Installation basically happens in 2 phases (for Windows and Unix{after 4.2SP03}):

Phase 1: Caching	Phase 2: Installation
<ul style="list-style-type: none"><li>• The installation can be launched via CLI/GUI (after 4.2SP03) and caching can be chosen</li><li>• Caching involves copying the software files to the installation directory</li><li>• During this phase, YOU can continue working on the system without interruptions</li><li>• Downtime need not be announced for the caching phase since there are no interruptions</li></ul>	<ul style="list-style-type: none"><li>• The installation can be re-launched after caching whenever downtime window is available through CLI/GUI (after 4.2SP03)</li><li>• The installer intelligently identifies that caching has already been performed and takes the user to “Resume Installation”</li><li>• Installation then proceeds as usual and there is DOWNTIME during this phase that needs to be accounted for</li></ul>

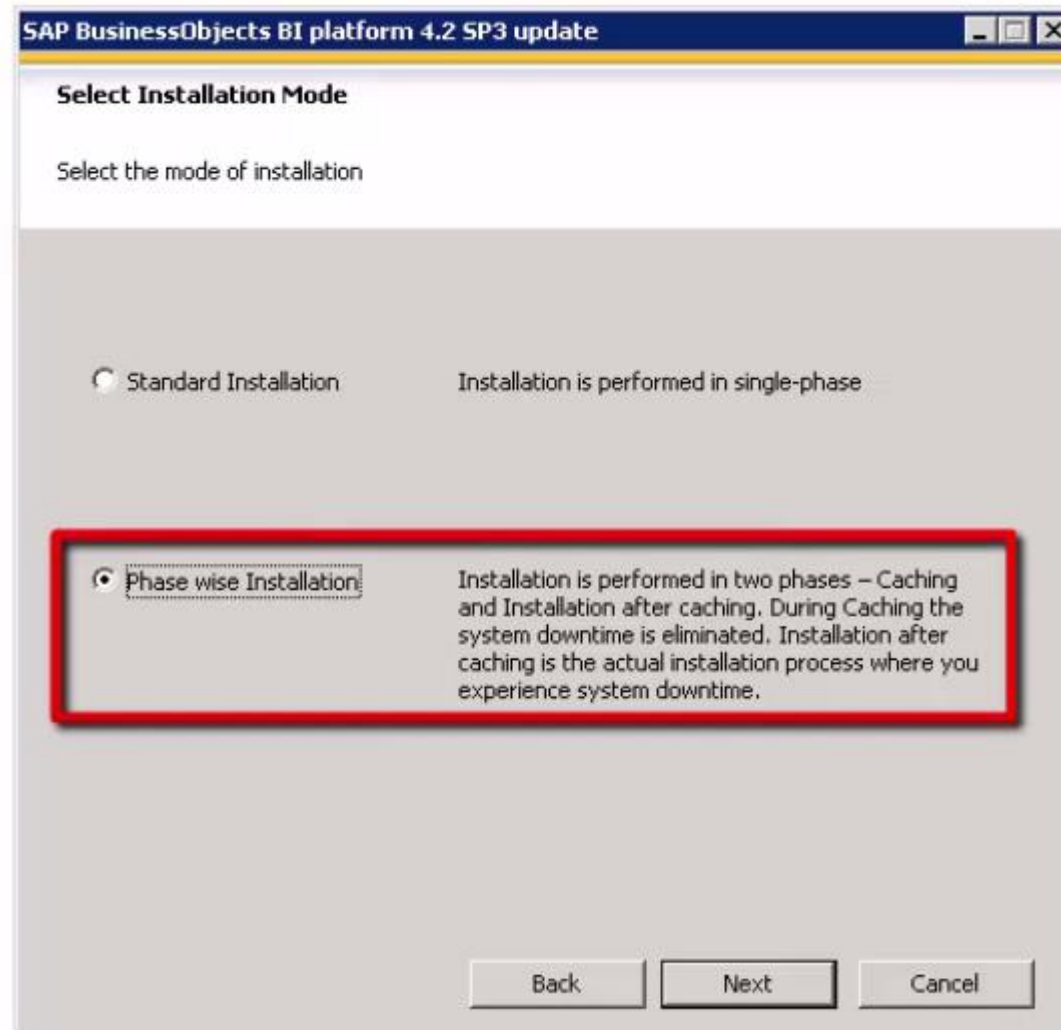


- ✓ Improved Installation performance
- ✓ Lesser Downtime

#The above metrics are based on comparison between BI 4.1 SP0X + BI 4.1 SP5/SP6 and BI 4.1 SP0X + BI 4.2 where X<5

# Feature Overview: Phase-wise Installation – GUI Mode (4.2 SP03+)

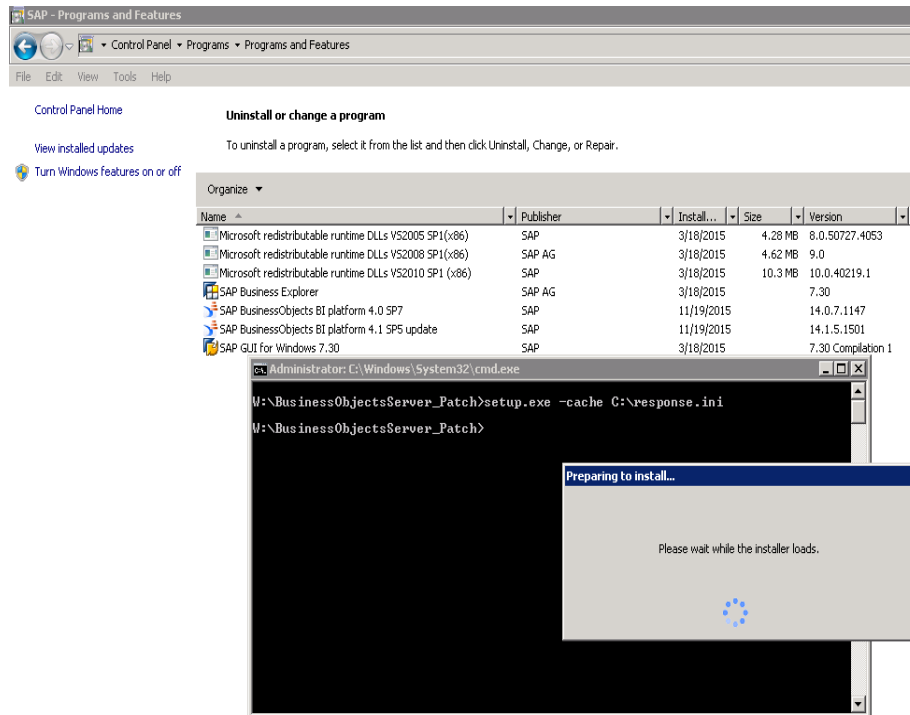
- ❑ Launch setup.exe and the installer opens
- ❑ Follow the instructions on the installer until YOU reach the installation mode window



# Feature Overview: Phase-wise Installation – Command Line Mode (4.2 SP02+)

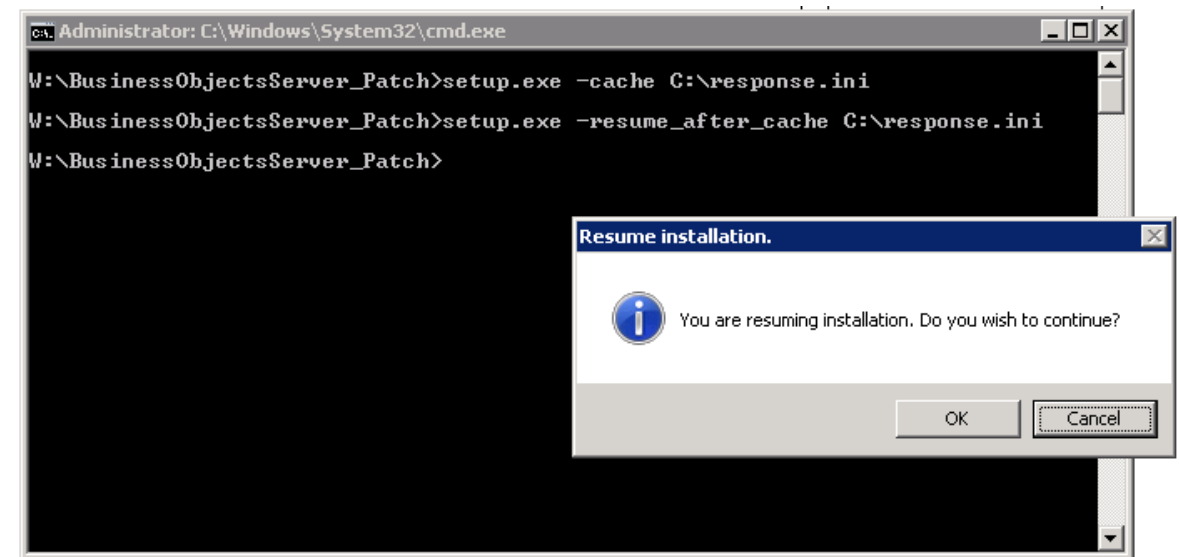
- Launch setup.exe through CLI with the parameters:

**setup.exe -cache C:\response.ini**



- Resume Installation through CLI with the parameters:

**setup.exe -resume\_after\_cache C:\Response.ini**



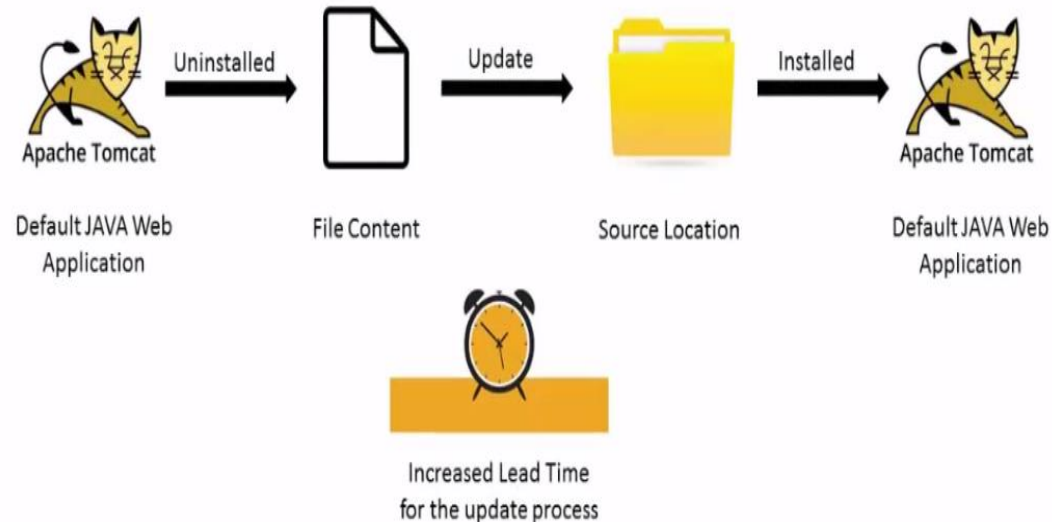


# Feature Overview: Web Applications Deploy Later (4.2 SP03+)

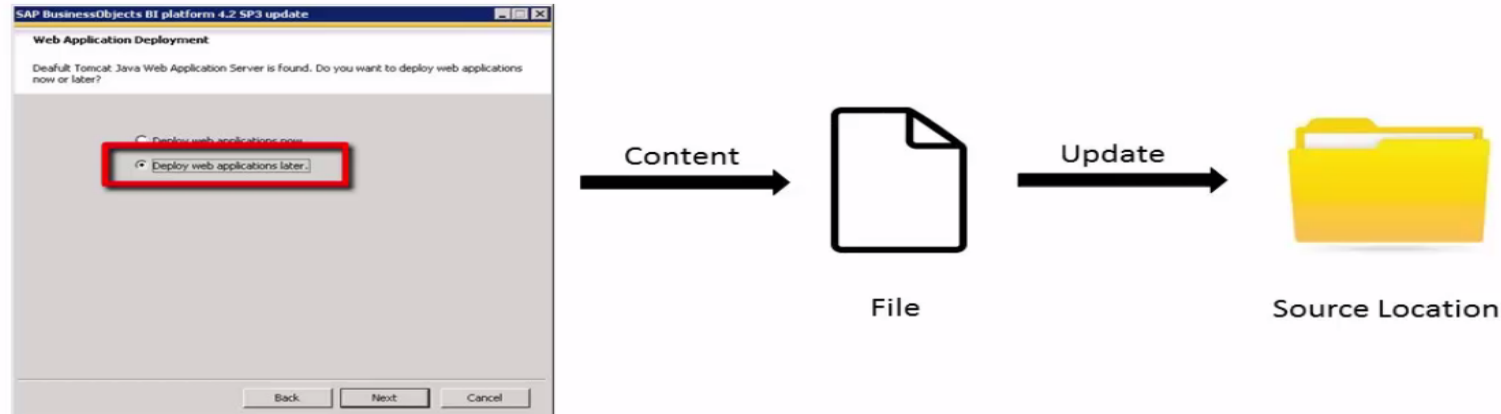
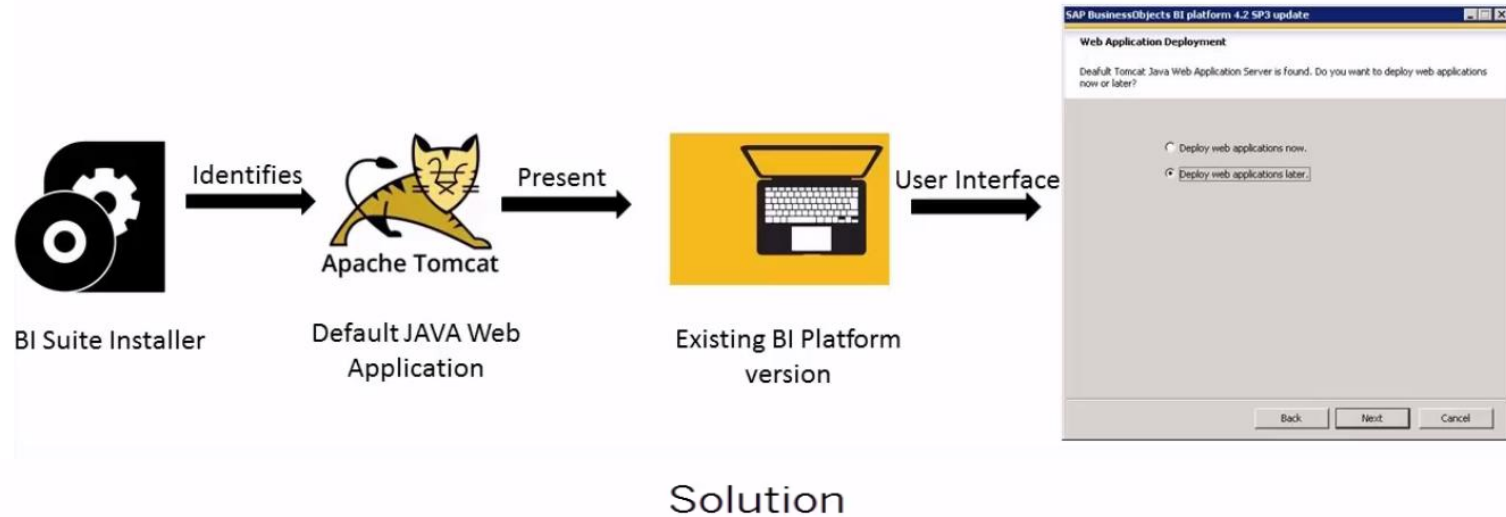
## Problem



- ❑ In multiple add-on deployments, default web app, Tomcat gets uninstalled and reinstalled after every add-on is installed
- ❑ This leads to additional lead time and downtime during installation



# Feature Overview: Web Applications Deploy Later (4.2 SP03+)

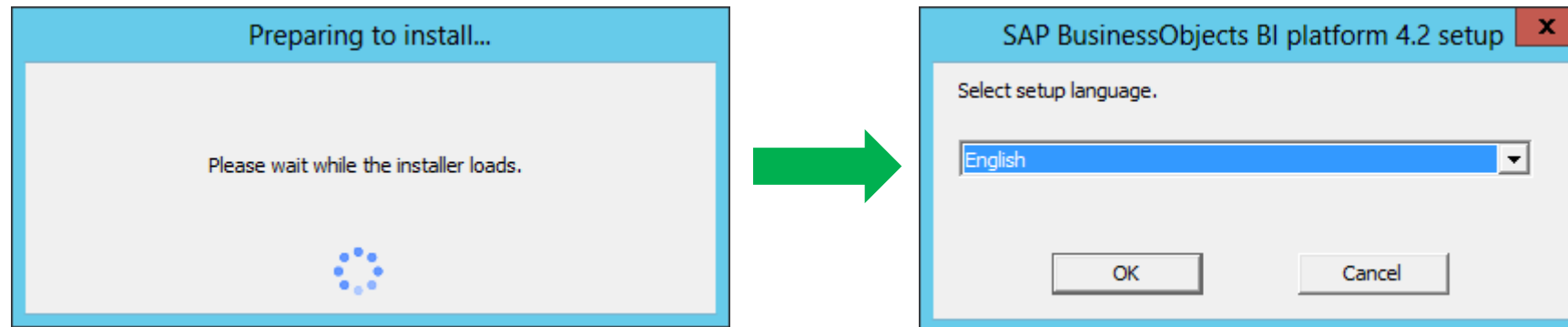


- ❑ With 4.2 SP03, the installer identifies if default web app is present and shows the Web Application Deploy Later screen
- ❑ Installation can be continued with **Deploy Later** option to save lead time
- ❑ Deploy Now to be selected only at the time of the last add-on update installation
- ❑ Content gets updated in the source location and is **unscathed**
- ❑ **Wdeploy** can be used for web app deploy if “Deploy Later” used for last add-on

# Feature Overview: Splash Screen Launch Optimization

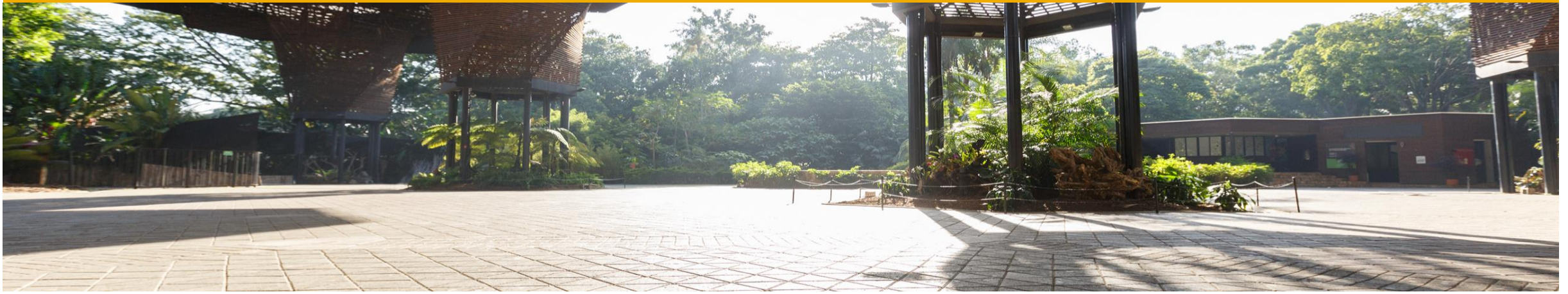
**before**

- ❑ Splash Screen takes **nearly 20 min** to launch after starting installation!



**after**

- ✓ With BI 4.2, Splash Screen launches within **3-5 min** of starting installation.
- ✓ About **80% savings** achieved by **optimizing Tree pruning algorithm** using memo-ization technique and also by optimizing database queries & string operations

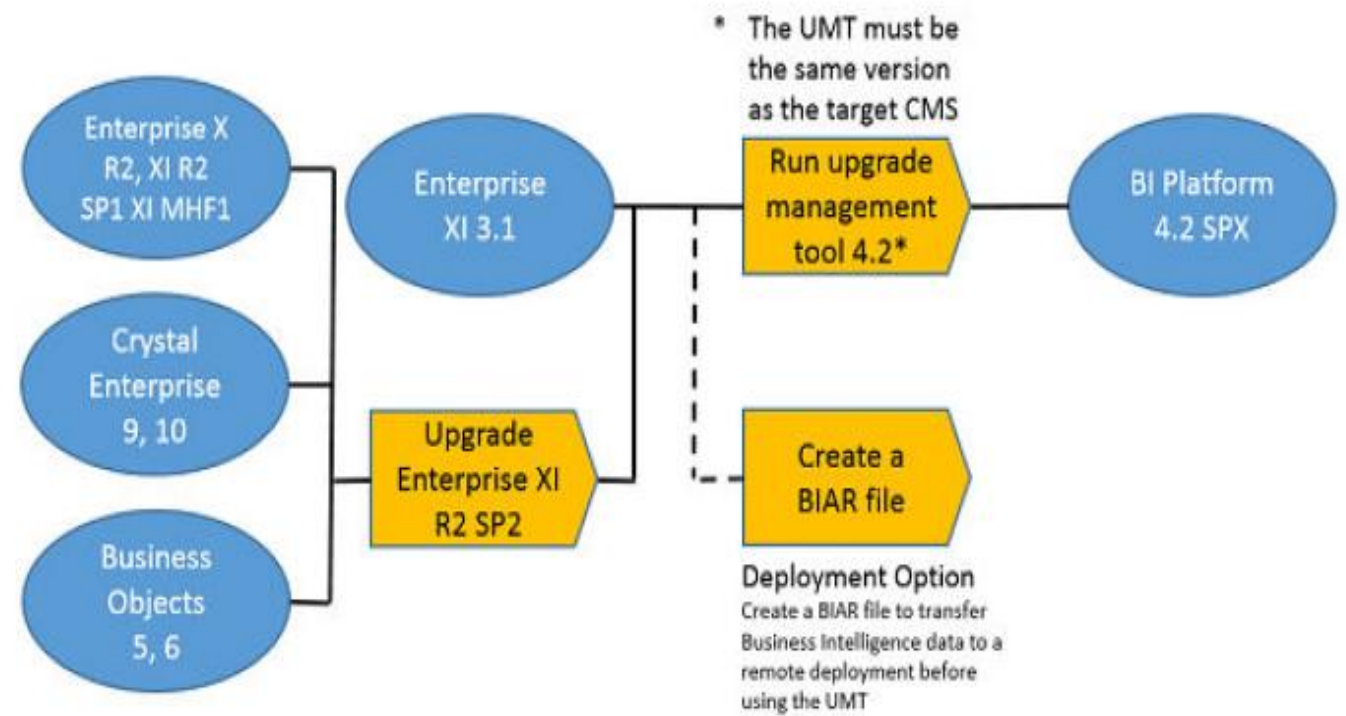


# UMT Enhancements



# Using Upgrade Management Tool (UMT)

- ❑ **Migration** - Guides you through the process of exporting BI content (user accounts, groups, folders, reports, universes, security, and other objects) and upgrading it to the most recent version
- ❑ Moving from a lower major version to a higher major version (ex: 3.x to 4.x)
- ❑ Use **Complete** or **Incremental Upgrade** to selectively move objects
- ❑ Moving across the same major version (ex: 4.x to 4.y) – **Promotion Management Tool**

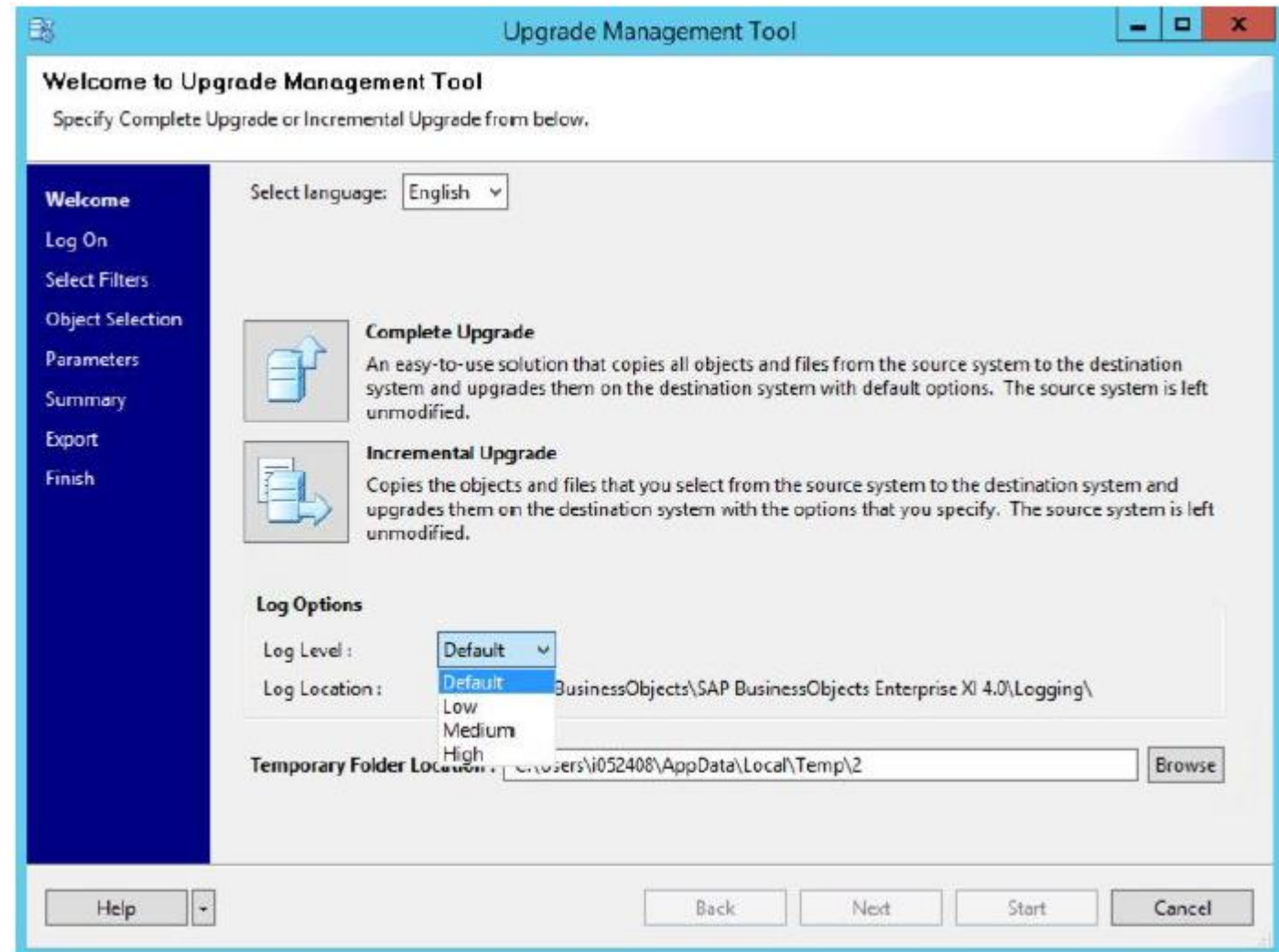


# Feature Overview: Log Level Setting

## Upgrade Management Tool

Specify the log level on the UMT UI:

- Define Log Level Settings
- Visualize Log directory for future use

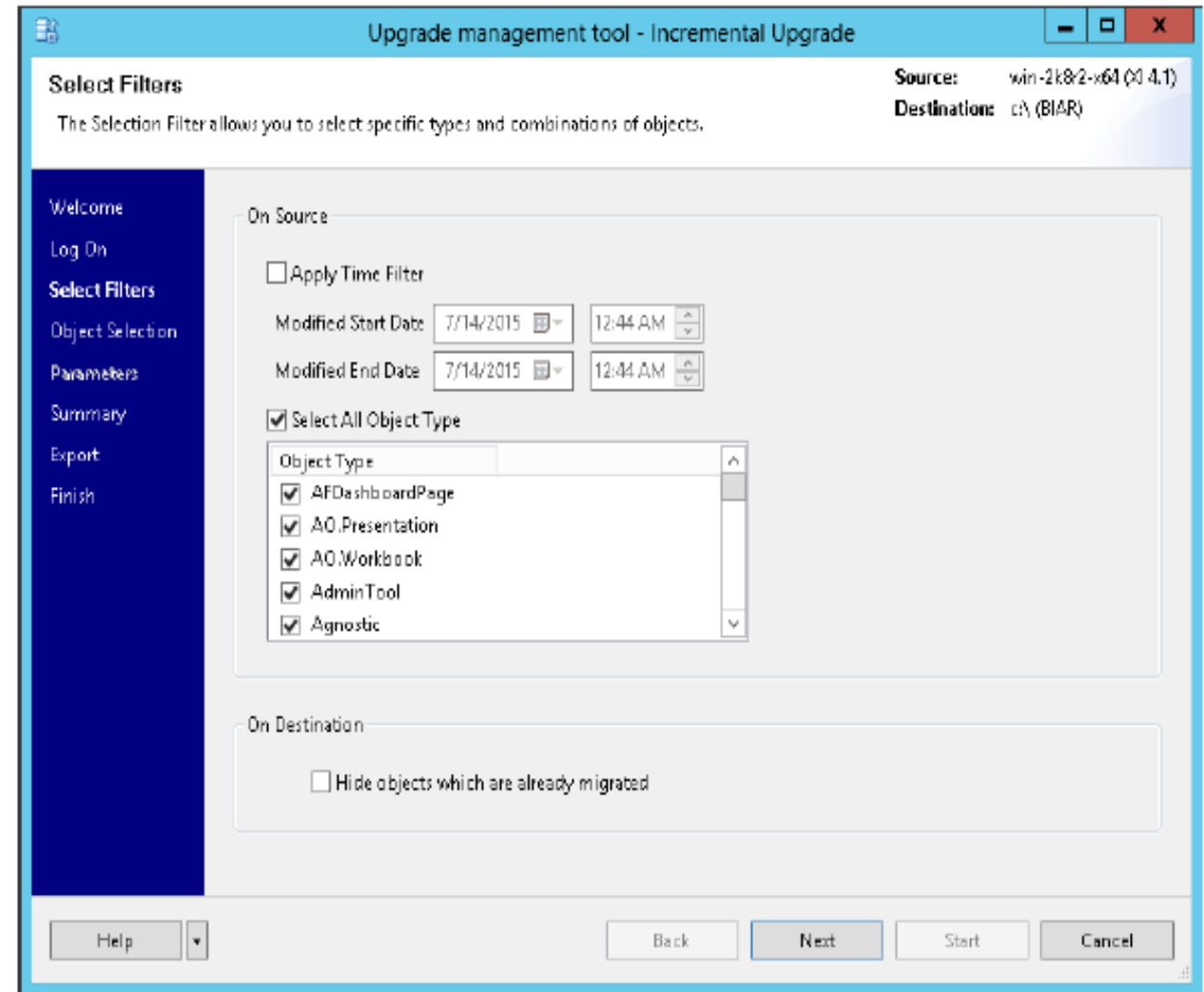


# Feature Overview: Filter Option for Object Selection / Delta Copy

## Upgrade Management Tool

New filter option to reduce objects presented in the “Object Selection” screen of the UMT. Options included:

- Modified between start – end date
- Object type
- Objects already upgraded

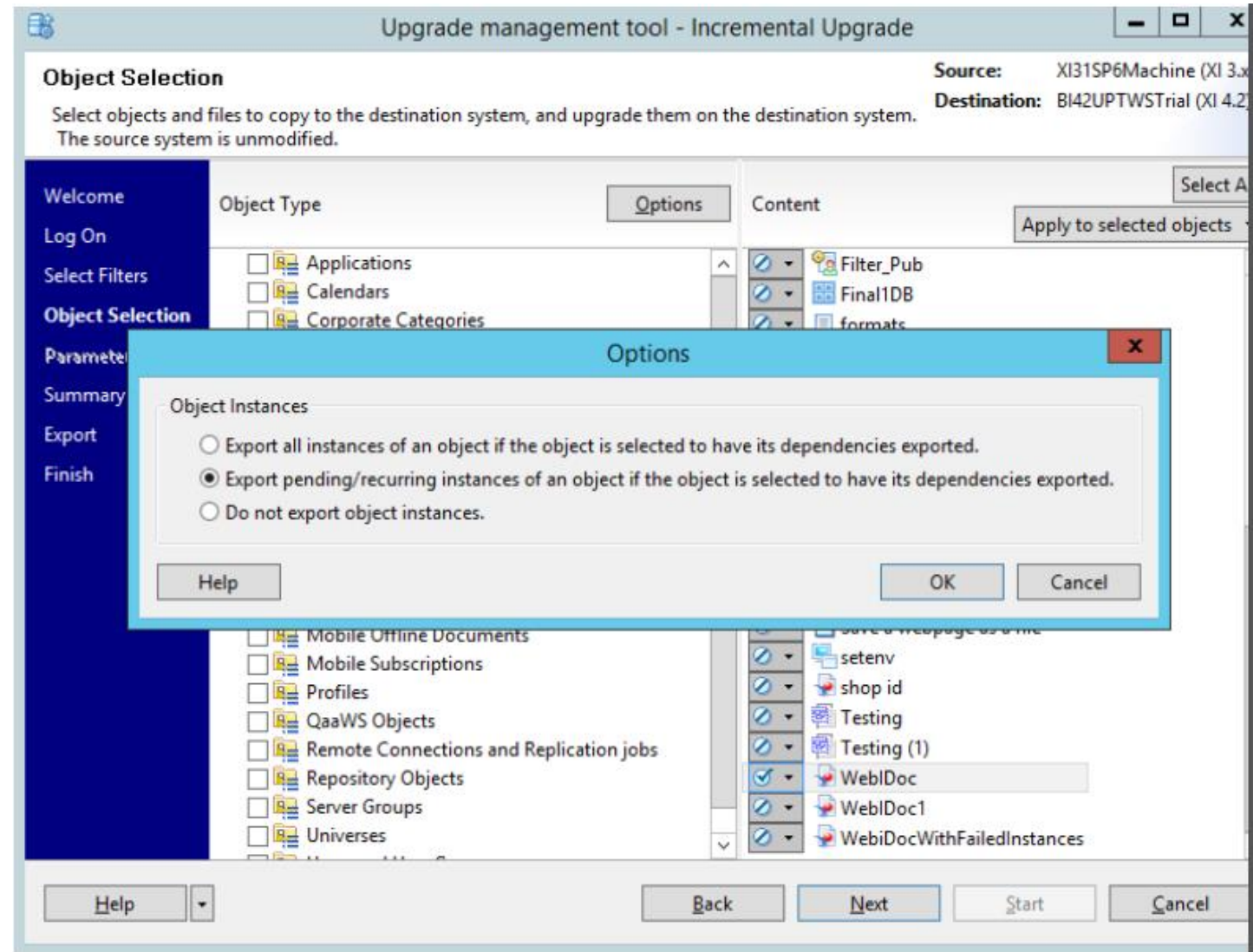


# Feature Overview: Export Pending Instances, Others

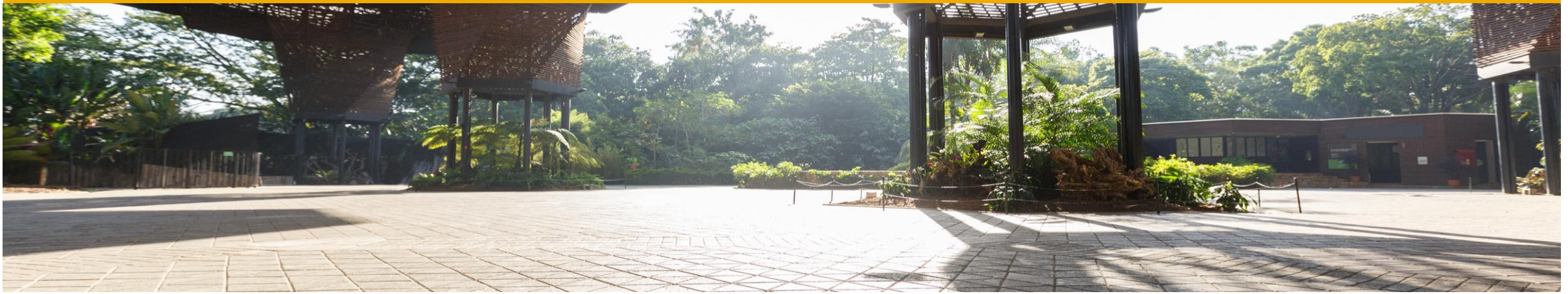
## Upgrade Management Tool

Improved control on content while upgrading:

- Export pending/recurring instances
- Do not migrate security
- View approximate size of selected content





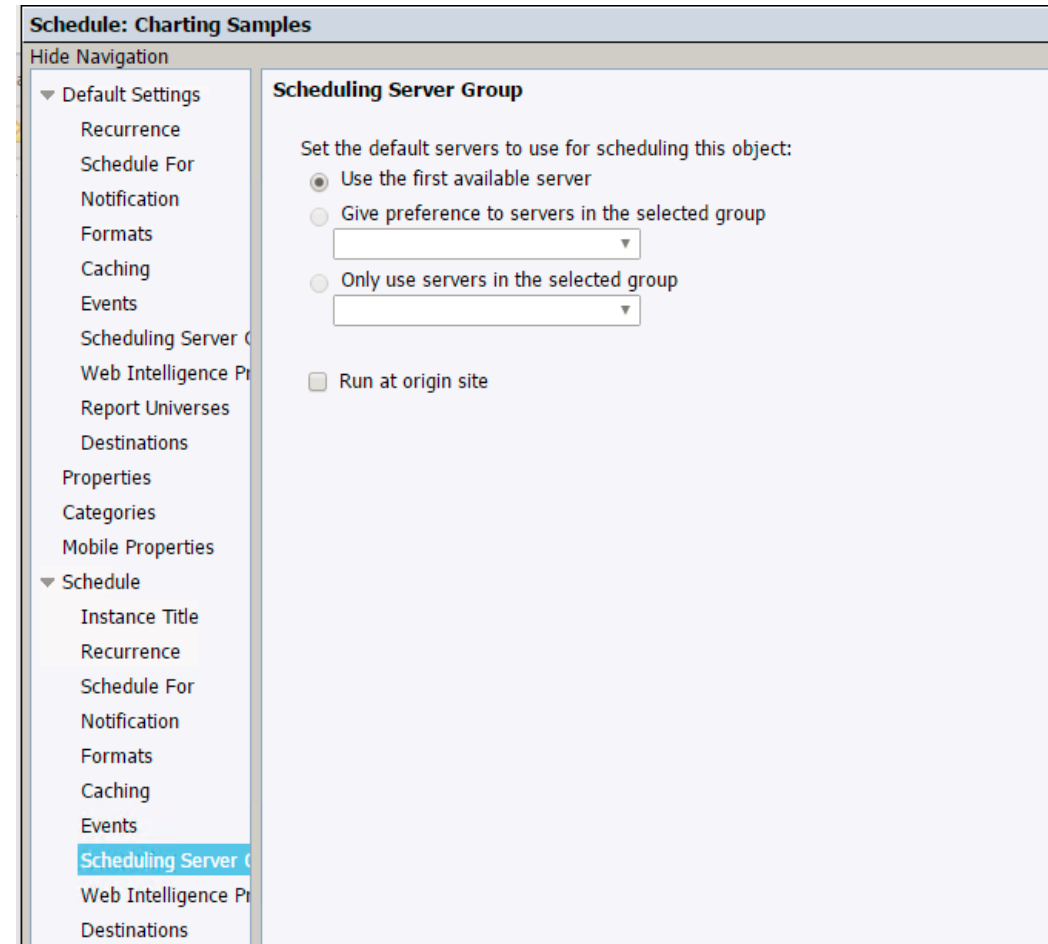


# **Server Group Exclusivity (SAP BusinessObjects BI Platform)**

# Feature Overview: Server Group Exclusivity

## Context:

- Servers are heavy lifters as they process various requests from user and other background operations
- BI Platform Administrators schedule various content types for other users at various intervals depending upon the scenario (ex: Daily Sales report for CEO in the morning)
- While scheduling reports for pre-defined intervals, there are options to assign a Server Group for processing including adding a preference or use the first available server
- However, a dedicated server group for critical scheduling tasks cannot be ensured in versions earlier to BI 4.2 SP03



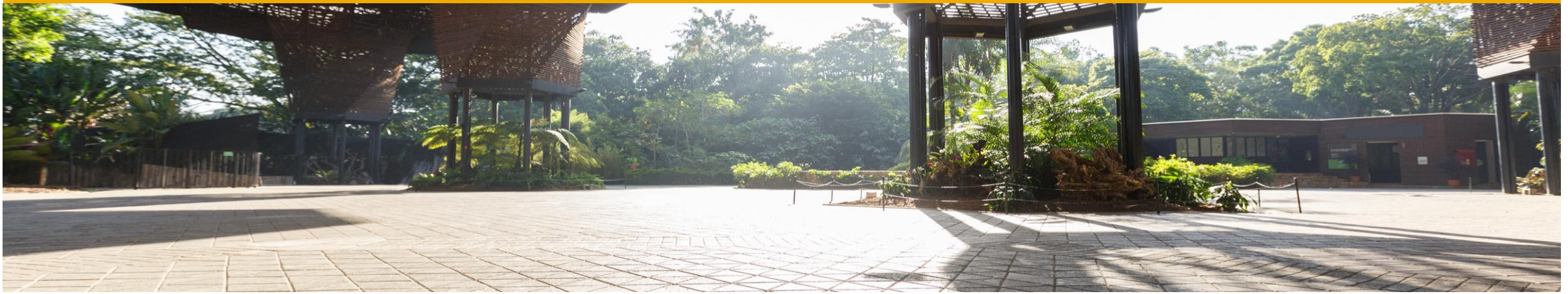
# Feature Overview: Server Group Exclusivity & Enhanced Publication Rules

## Server Group Exclusivity as a Solution:

- Helps in creating Server Groups that are isolated from the general load of the BI system
- For critical scheduling tasks which require a dedicated server group, this feature is very useful
- BI Platform Administrators can now create a new Server Group to **isolate servers** from the general load of the BI system – Thus “*Exclusive Server Group*”
- The servers added to an exclusive server group cannot be assigned to other Server Groups (Exclusive or Non Exclusive) and will be **excluded** from the common pool as well

The screenshot shows a 'Create Server Group' dialog box. It has a title bar 'Create Server Group'. Below it, there are two input fields: 'Name' with the text 'New Server Group' and 'Description' which is empty. Below these fields, there is a section titled 'Exclusive Server Group' with a checkbox that is checked. Below this section, there is a text box containing the following text: 'You can create or update an exclusive server group only at root level. For child node, you can create an exclusive server group only if the root or parent server group is exclusive.' An orange arrow points from this text box to a red text label 'New option introduced 4.2 SP03'.





# **WEBI Enhancements - Parallel Queries**

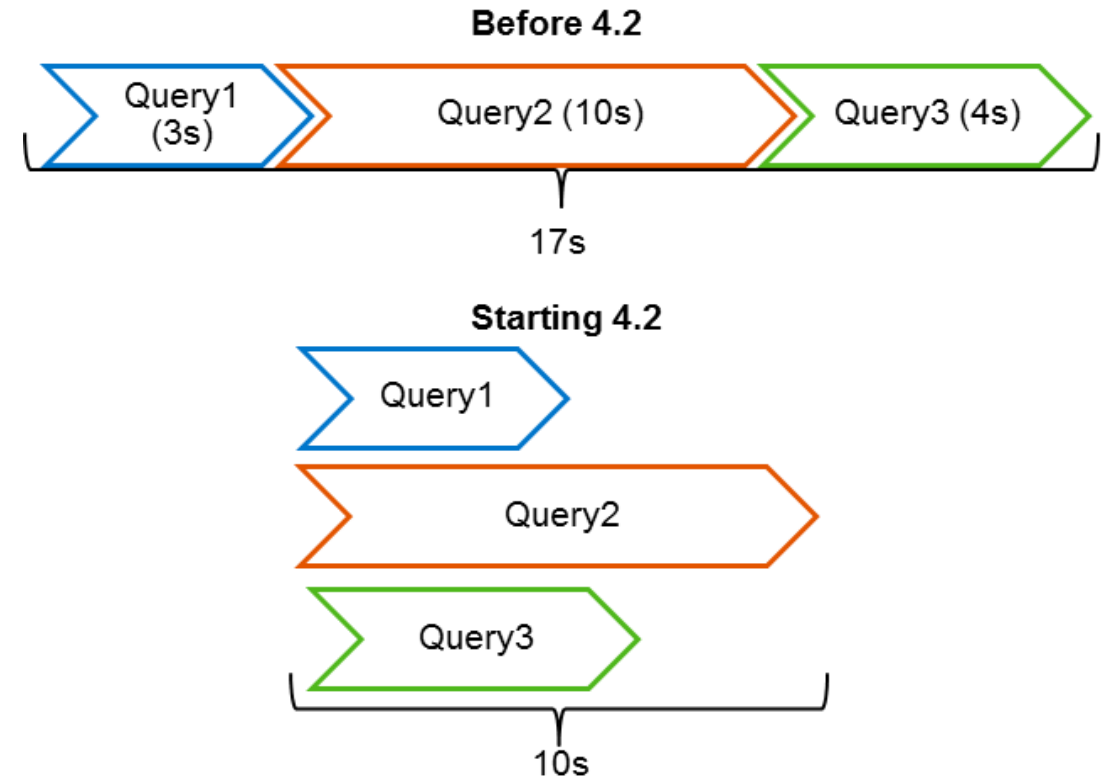


# Feature Overview: Parallel Queries - Web Intelligence

## Parallel Queries (1)

Improve performance of Web Intelligence by parallelization of queries in case of refresh of WEBI documents with multiple data providers

- Parallel activities on DB at the execution and data fetch enabled automatically
- Supported on UNV, UNX, SAP HANA Direct Access, SAP BW, FHSQL and Text Files
- Supported in WEBI REST SDK, Scheduler, Rich Client, HTML and Applet



**Note:** The total refresh duration will depend on the underlying hardware, the network, the overload, and the database configuration

*Limitations: Parallel Queries cannot be run on Analysis Views, Excel files; no more than 4 queries on same relational connection, 1 for same OLAP conn/text file*

# Feature Overview: Parallel Queries - Web Intelligence

## Parallel Queries (2)

Control the number of parallel queries through configuration files (BI 4.2 SP02+):

- Ability to deactivate the Parallel Query feature
- Ability to change the max number of concurrent data refresh jobs

Parallel query settings are available from configuration files i.e. **WebiContainer\_ClientDescriptor.xml** for WRC and **WebiContainer\_ServerDescriptor.xml** for BOE Server

Look for **WebiParamMaxConcurrentRefreshJobs** parameter to control this feature

```
<admin smart_service="" enabled_metrics="false" enabled_params="false" >
  <default_admin_param_values>
    <param name="WebiParamListOfValuesBatchSize" value="1000" type="integer" is_managed="true" />
    <param name="WebiParamCustomSortMaxSize" value="1000" type="integer" is_managed="true" />
    <param name="WebiParamMaxLovSize" value="50000" type="integer" is_managed="true" />
    <param name="WebiParamEnableListOfValueCache" value="false" type="bool" is_managed="true" />
    <param name="WebiParamUniverseMaxCacheSize" value="20" type="integer" is_managed="true" />
    <param name="WebiParamDetailedDbErrorsEnabled" value="true" type="bool" is_managed="false" override="ie.dp" />
    <param name="WebiParamMaxConcurrentRefreshJobs" value="64" type="integer" is_managed="false" />
  </default_admin_param_values>
</admin>
```

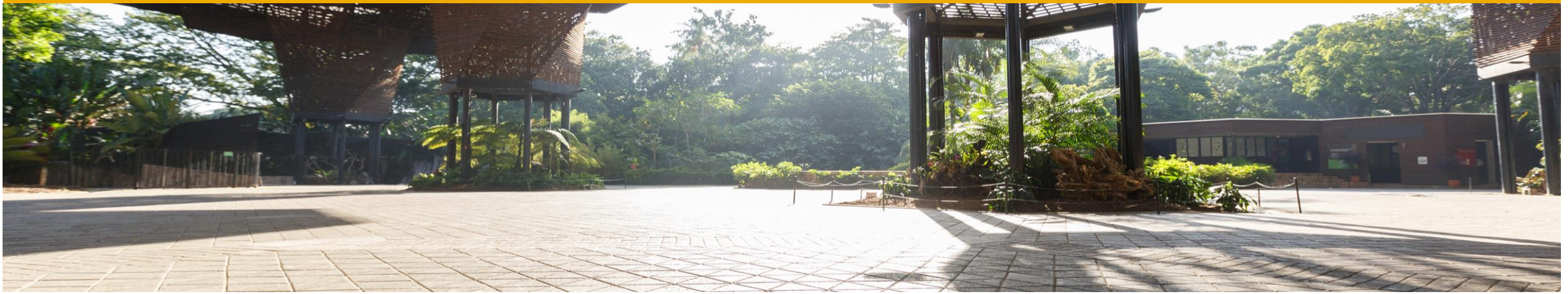
# Feature Overview: Parallel Queries - Web Intelligence

---

## Parallel Queries (3)

Control the number of parallel queries through UDT/IDT/CMC: (BI 4.2 SP03+)

- In Universe Design Tool (UDT) and Information Design Tool (IDT): *Max Parallel Queries per connection* parameter for relational connections.
- In CMC and Information Design Tool (IDT): *Max Parallel Queries per connection* parameter for OLAP connections.
- In CMC: *Max Parallel Queries* per document parameter and enable/disable parallel queries for scheduling

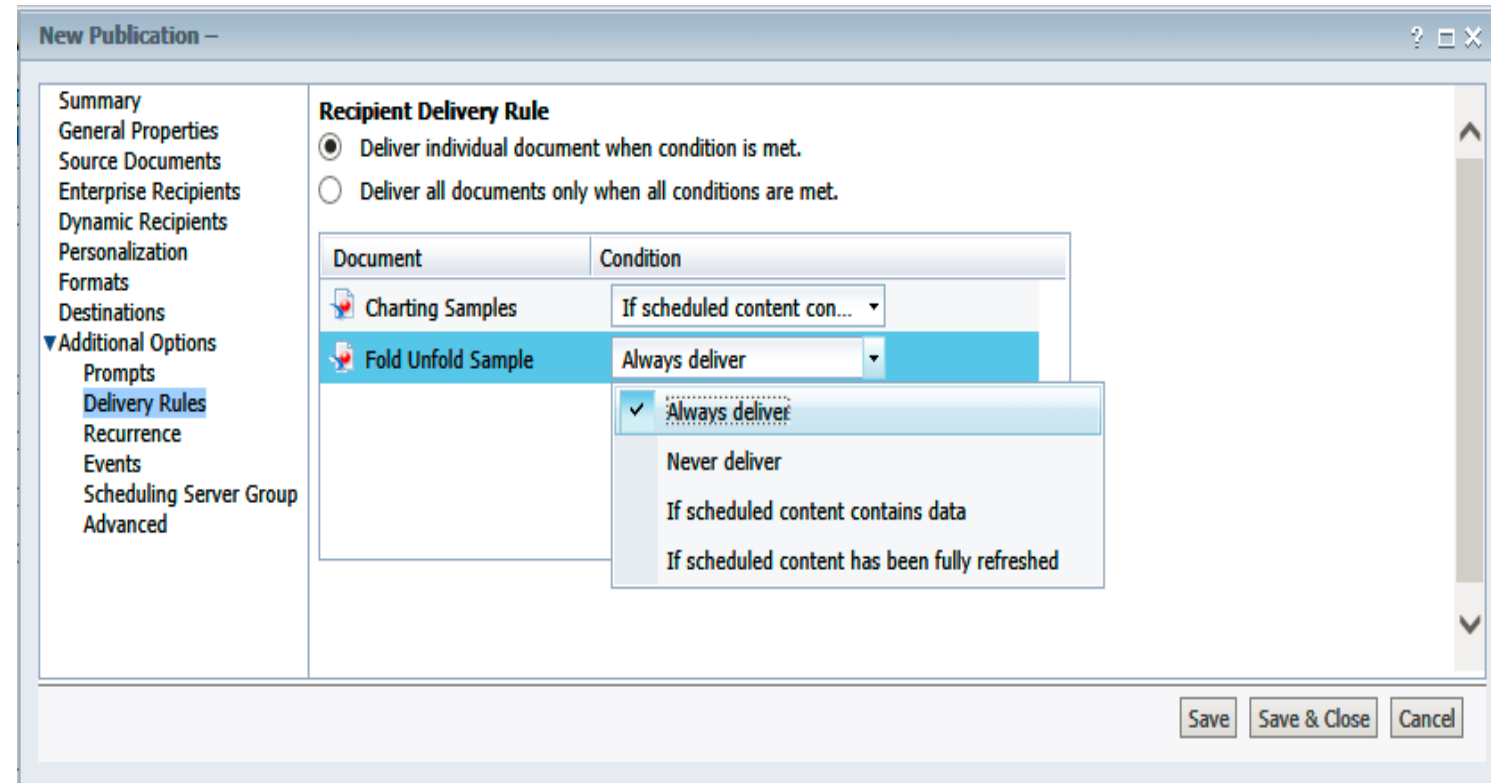


# **WEBI Enhancements - Enhanced Publication Rules**



# Feature Overview: Enhanced Publication Rules - Web Intelligence

- Enhanced Publication delivery rules supported post BI 4.2 SP03:
  - Do not send the publication if scheduled content has no data
  - Do not send the publication if scheduled content has not fully refreshed
- These rules can be used to prevent publishing empty or non-meaningful documents
- If Publication contains several documents and if one/some documents do not meet these rules, then one can:
  - Cancel whole publication
  - Deliver only those documents that have met the rules



# Resources and Useful Links

---

- **SAP BusinessObjects BI4.2 SP03 - Installer - Phase Wise Install**  
<http://go.sap.com/assetdetail/2016/10/52748abb-8f7c-0010-82c7-eda71af511fa.html>
- **SAP BusinessObjects BI4.2 SP03 - Installer – Web Applications Deploy Later**  
<http://go.sap.com/assetdetail/2016/10/6ec293bb-8f7c-0010-82c7-eda71af511fa.html>  
<https://blogs.sap.com/2017/01/02/bi-4.2-sp03-deployments-feature-overview-web-applications-deploy-later/>
- **SAP BusinessObjects BI4.2 SP03 – Exclusive Server Groups**  
<https://www.youtube.com/watch?v=BCfCvp90jCA>  
<https://blogs.sap.com/2016/11/07/servergroup-enhancements-for-scheduling-in-4.2sp03/>
- **SAP BusinessObjects BI4.2 SP03 – Parallel Queries**  
<https://blogs.sap.com/2016/01/22/new-webi-feature-in-bi42-parallel-queries/>

## **SAP BusinessObjects BI4.2 SP03 – What's New**

[BI4.2SP03 What's New – Documentation](#)

[WEBI-What's New](#)



# Thank you

**Contact information:**

**Samarth Narayan**

Product Manager

+91-9686887163