



SAP's Strategy for Enabling Integrated Business Planning

Product Management - LoB Digital Supply Chain
April 2018

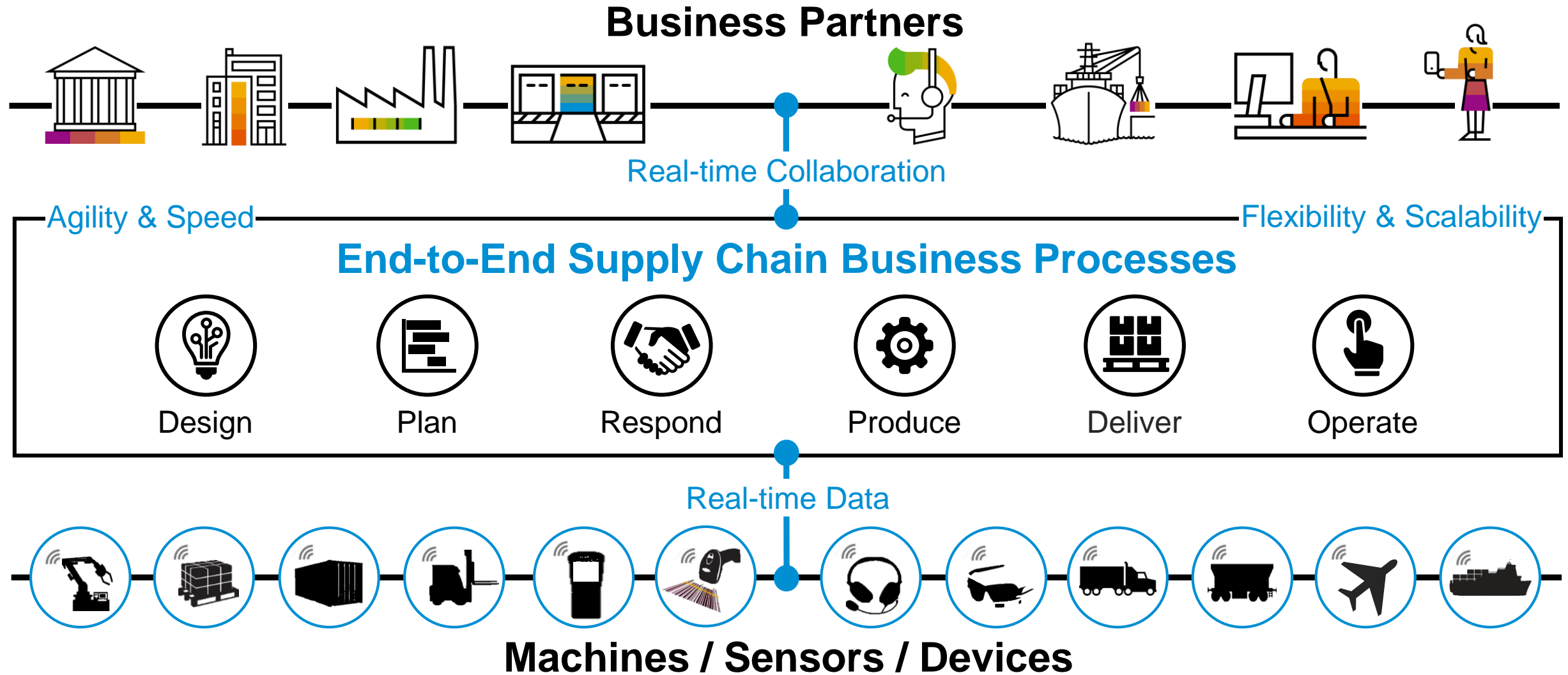
CUSTOMER

Legal Disclaimer

The information in this presentation is confidential and proprietary to SAP and may not be disclosed without the permission of SAP. This presentation is not subject to your license agreement or any other service or subscription agreement with SAP. SAP has no obligations to pursue any course of business outlined in this document or any related presentation, or do develop or release any functionality mentioned therein. This document, or any related presentation and SAP's strategy and future developments, products and or platforms directions and functionality are all subject to change and may be changed by SAP at anytime for any reason without notice. The information in this document is not a commitment, promise or legal obligation to deliver any material, code or functionality. This document is provided without a warranty of any kind, either express or implied, including but not limited to, the implied warranties of merchantability, fitness for particular purpose, or non-infringement. This document is for informational purposes and may not be incorporated into a contract. SAP assumes no responsibility for errors or omissions in this document, except if such damages were caused by SAP's willful misconduct or negligence.

All forward-looking statements are subject to various risks and uncertainties that could actual result to differ materially from expectations. Readers are cautioned no to place undue reliance on these forward-looking statements, which speak only as of their dates, and they should not be relied upon in making purchasing decisions.

SAP Digital Supply Chain Management Strategy



SAP Digital Supply Chain Product Investment Focus

Business Network Enablement

SAP Ariba

SAP Supplier Network
Collaboration



SAP Global
Track and Trace

SAP Logistics
Business Network

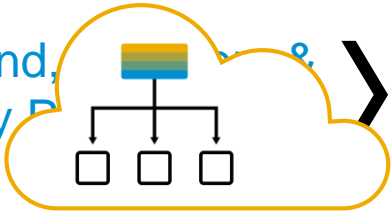
Real-time Collaboration

Agility & Speed

Flexibility & Scalability

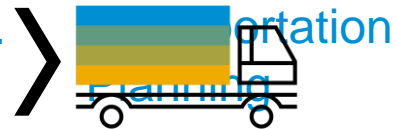
End-to-End Supply Chain Business Processes

Demand
Supply



Integrated Business
Planning

Production Plan./Exec.
& Procurement



Transportation
Logistics

Warehouse
Execution

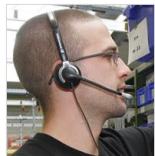


Warehouse
Logistics

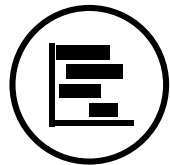
Real-time Data



SAP Leonardo



Unified Platform & Integrated Processes



Plan



Respond



Supply Chain Control Tower

Exception Handling and Business Network Collaboration

Sales & Operations

Strategic and Tactical Decision Processes

Demand

Demand Sensing,
Statistical
Forecasting &
Consensus Planning

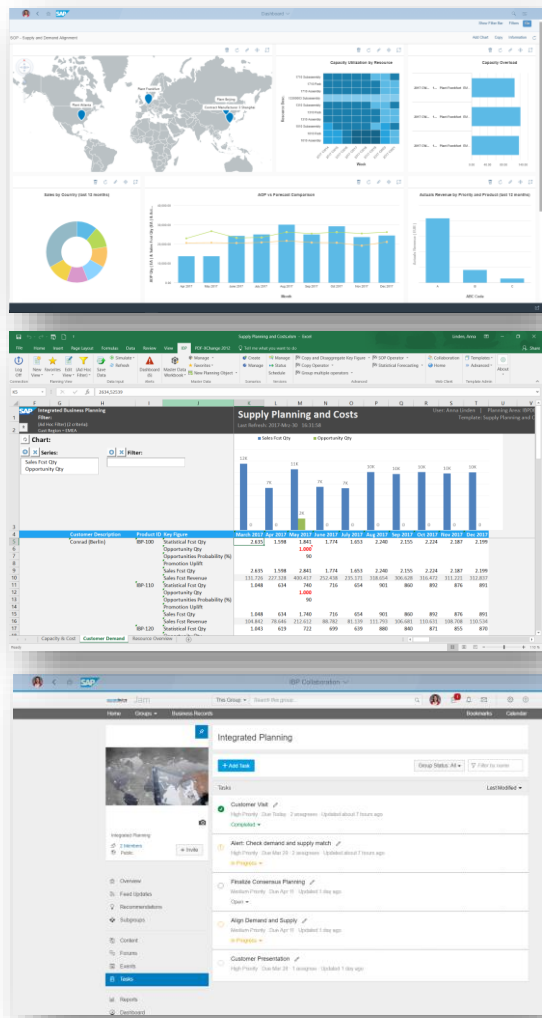
Inventory

Multi-Stage
Inventory
Optimization

Response & Supply

Allocations &
Deployment
Planning,
Order Rescheduling
Unconstrained &
Constrained
Supply Planning

SAP HANA



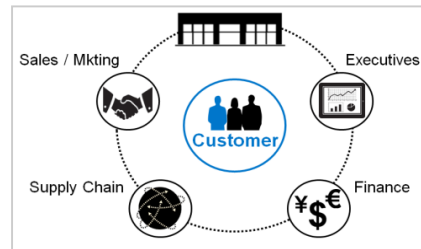
New Generation of Supply Chain Planning from SAP

One Integrated Planning Model

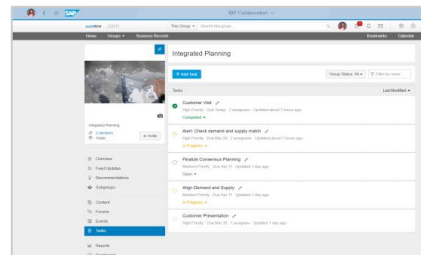
Real-time insight,
monitoring &
alerting



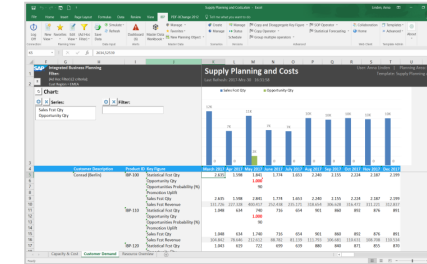
Integrated
business planning
SCP processes



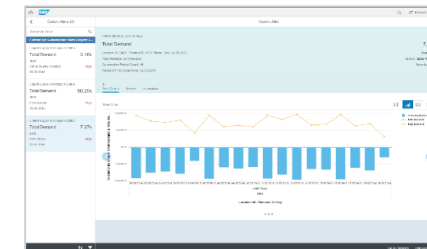
Embedded social
collaboration
platform
SAP JAM



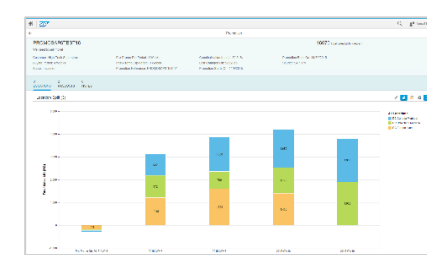
Real-time
planning and
what-if scenario
simulation



Smart algorithms
incl. machine
learning

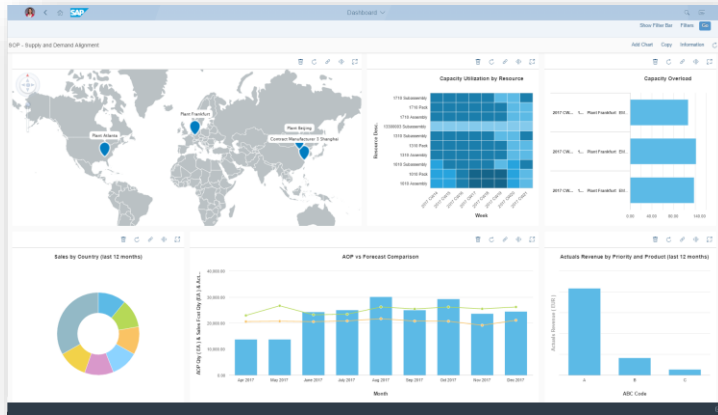


Simplified User
Experience with
SAP Fiori and
Microsoft Excel



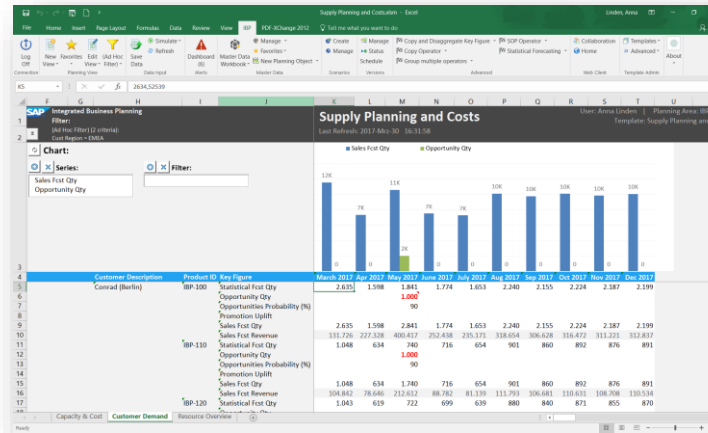
State-of-the-Art Architecture based on SAP HANA

Unified User Experience



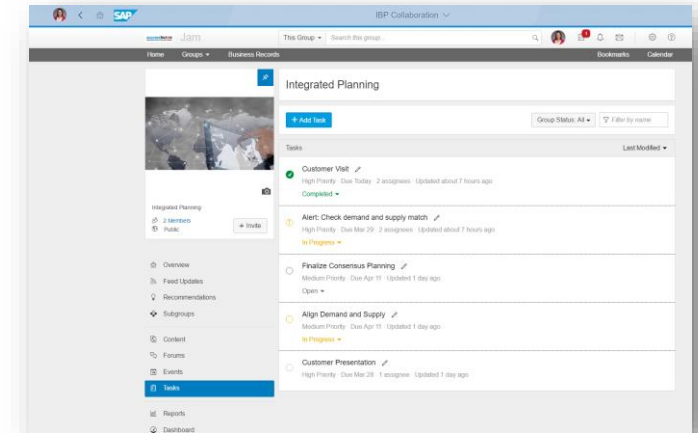
Browser-based WebUI

- Real-time insight & monitoring
- Exception handling / alerts
- S&OP Process & Task Management
- Model Configuration
- Job Scheduling



IBP Add-In for Microsoft Excel

- Real-time insight & monitoring to analyze the data
- Advanced planning and data management
- Real-time what-if scenario simulations
- Master Data Management

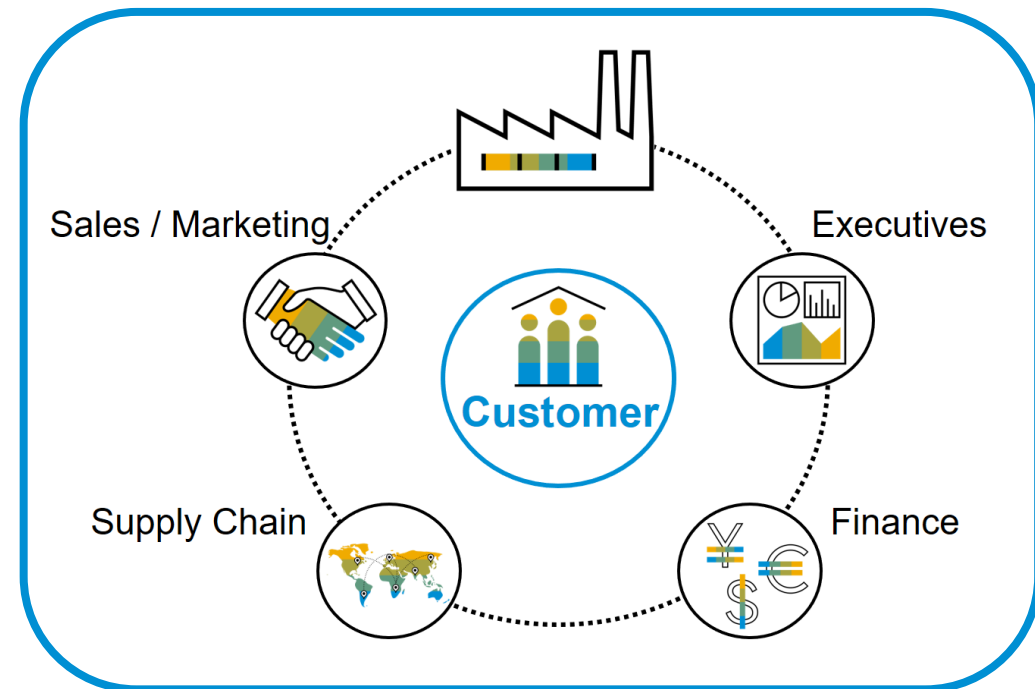


SAP JAM

- Embedded social collaboration platform
- Exchange ideas
- Keep all stakeholders informed about the latest activities
- S&OP Task Management

One Harmonized Data Model

All modules are running on same data model with no need for Data Transformations

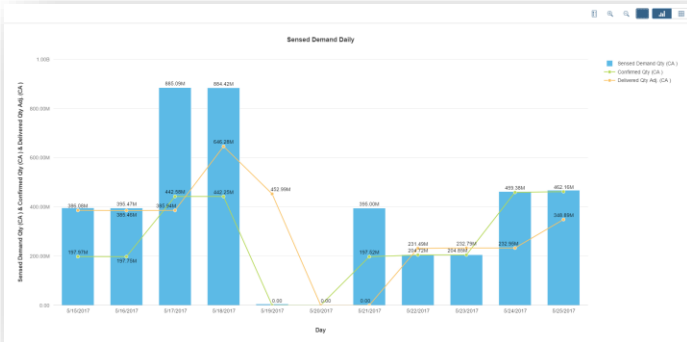


**Key enabler for more frequent and integrated planning cycles
on all levels and across all areas**

New Planning Algorithms

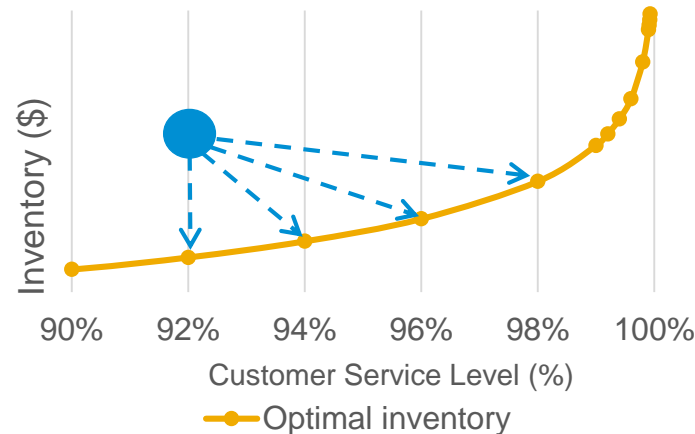
New and sophisticated planning algorithms address the changing focus in supply chain planning

Demand Sensing



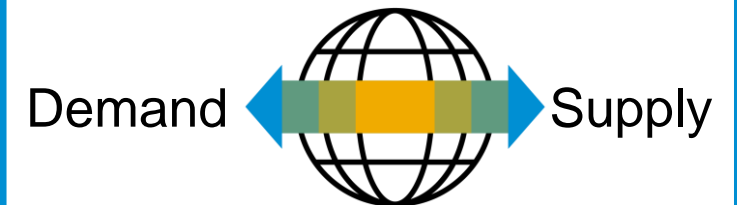
Increase forecast accuracy in the short term horizon and plan your demand in daily buckets

Inventory Optimization



Most-efficient inventory deployment to meet service level targets

Fast, priority-based Response Management



React to short term changes in demand or supply with adjustments

Real-Time “What-If” Simulation and Comparison

Fast and scalable version and scenario planning leads to faster decision processes that are based on profound knowledge



**Real-time what-if
scenario planning**

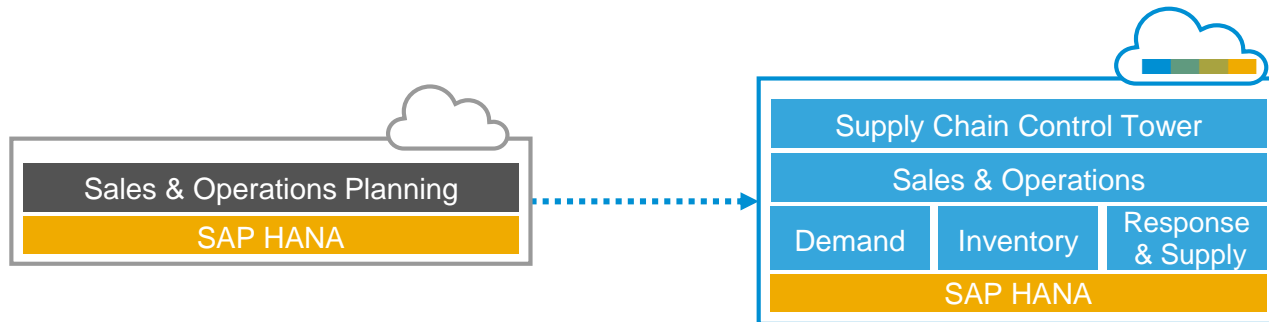


**Real-time scenarios
and simulation on
entire model**

Innovation Progress

2012 - 2013

2014 - 2016



S&OP

Cloud-based,
Strategic Planning

IBP

Unified Platform &
Integrated Processes

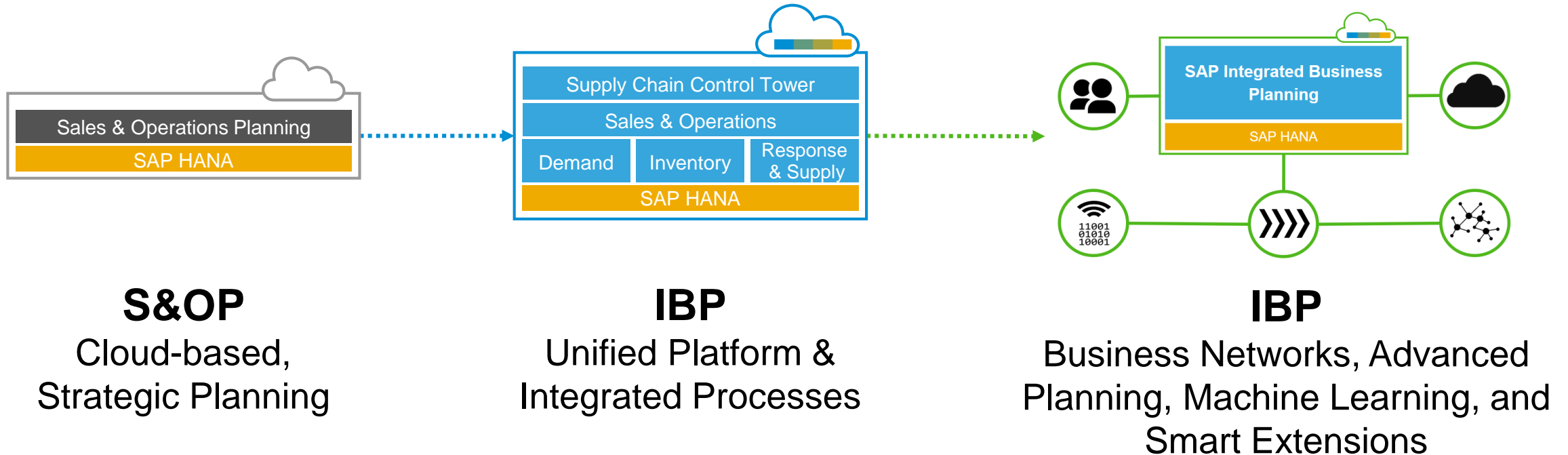
Functional, Integration, Industry-specific & Security Enhancements

Future Innovation Focus

2012 - 2013

2014 - 2016

2017 +

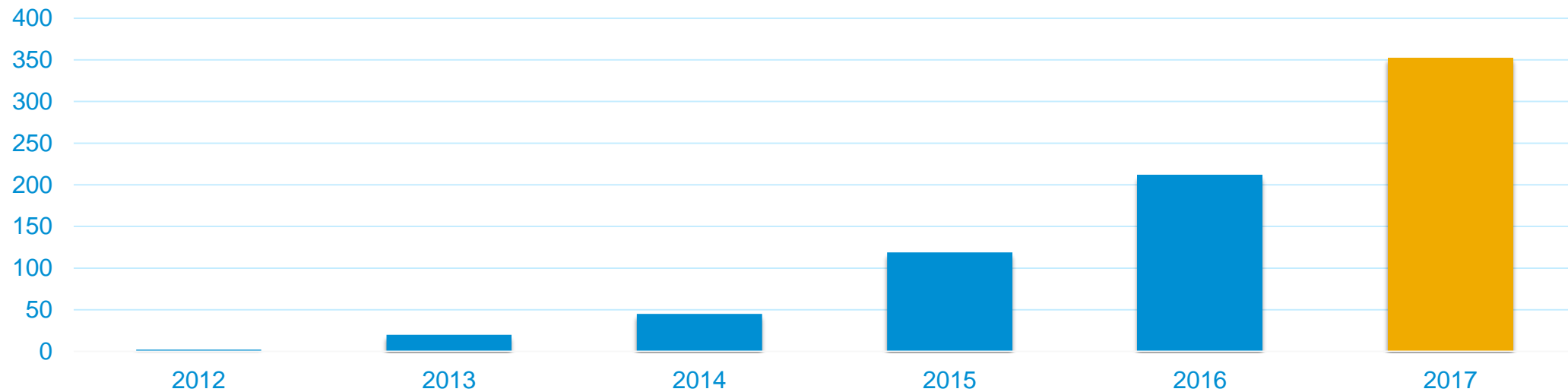


Functional, Integration, Industry-specific & Security Enhancements

Exponential Growth Continued in 2017

Testament to a Solid Strategy and Strong Product

Exponential Growth of New Customers with 350+ IBP Customers Worldwide



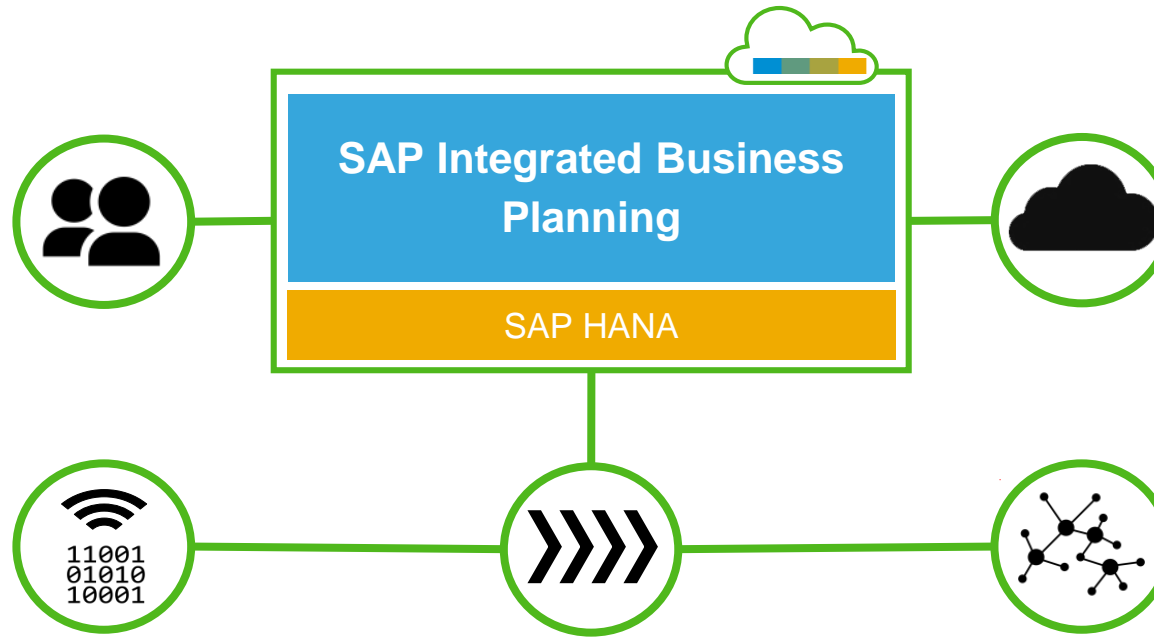
Future Innovation Focus

Details

Usability

- Visualization
- Process Automation
- Exception Handling
- Stakeholder Management

Machine Learning



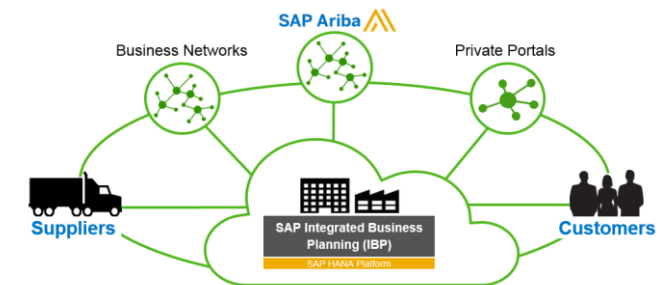
Cloud Operations

- Scaling & Performance
- Security
- Test Automation
- Extensibility

Business Network Collaboration

Advanced Planning

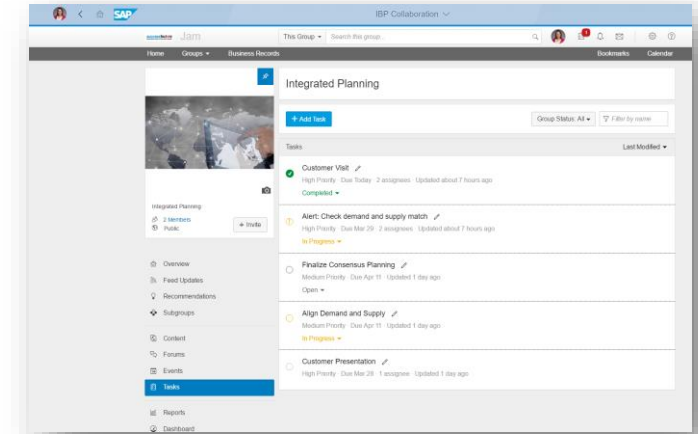
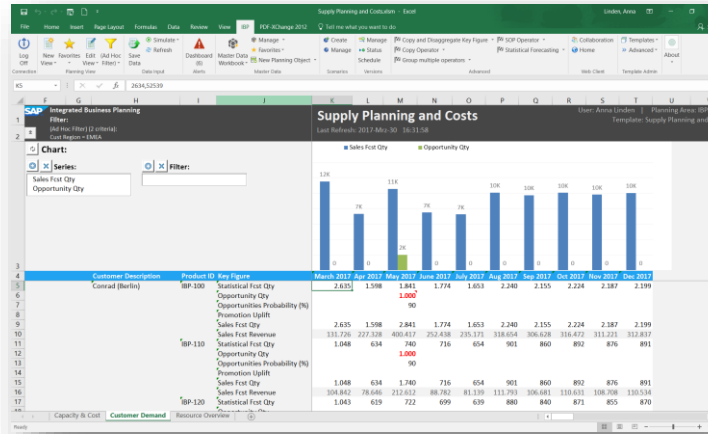
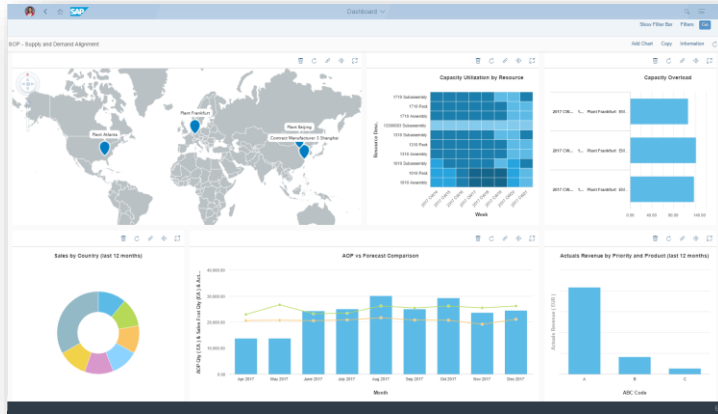
- Sophisticated Algorithms
- Integration
- Flexible Modelling & Configuration



Usability



Usability Today



Browser-based WebUI

- Consultants
- Administrators
- Planners and Business Users

IBP Add-In for Microsoft Excel

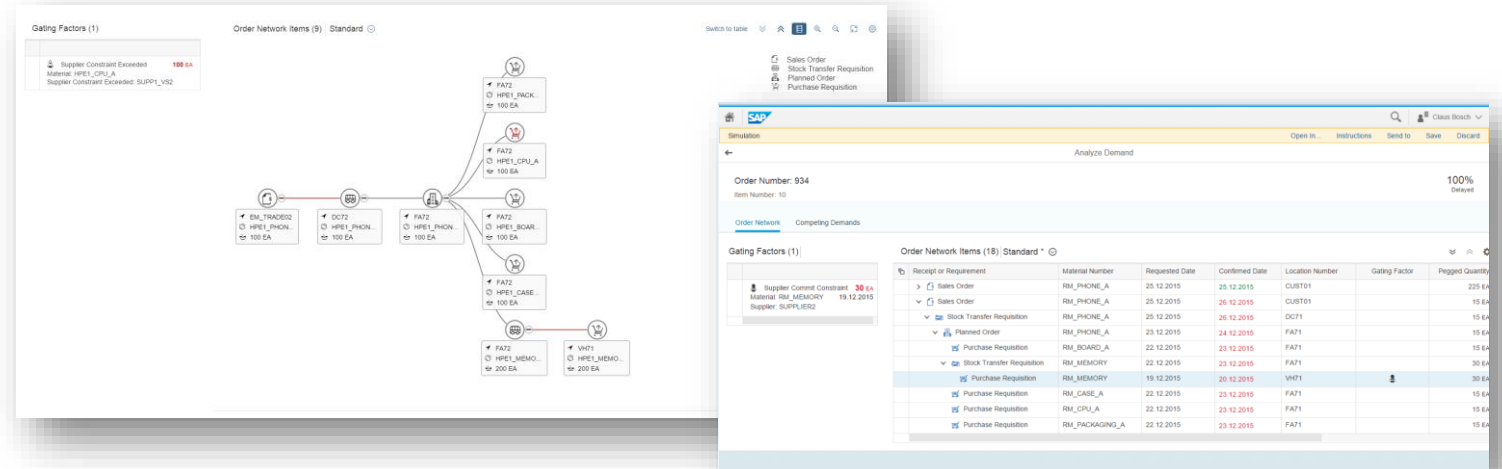
- Planners and Business Users

SAP JAM

- Planners and Business Users

WebUI for Business Users and Planners

Easy Consumption of Data via Dashboards and other SAP Fiori apps

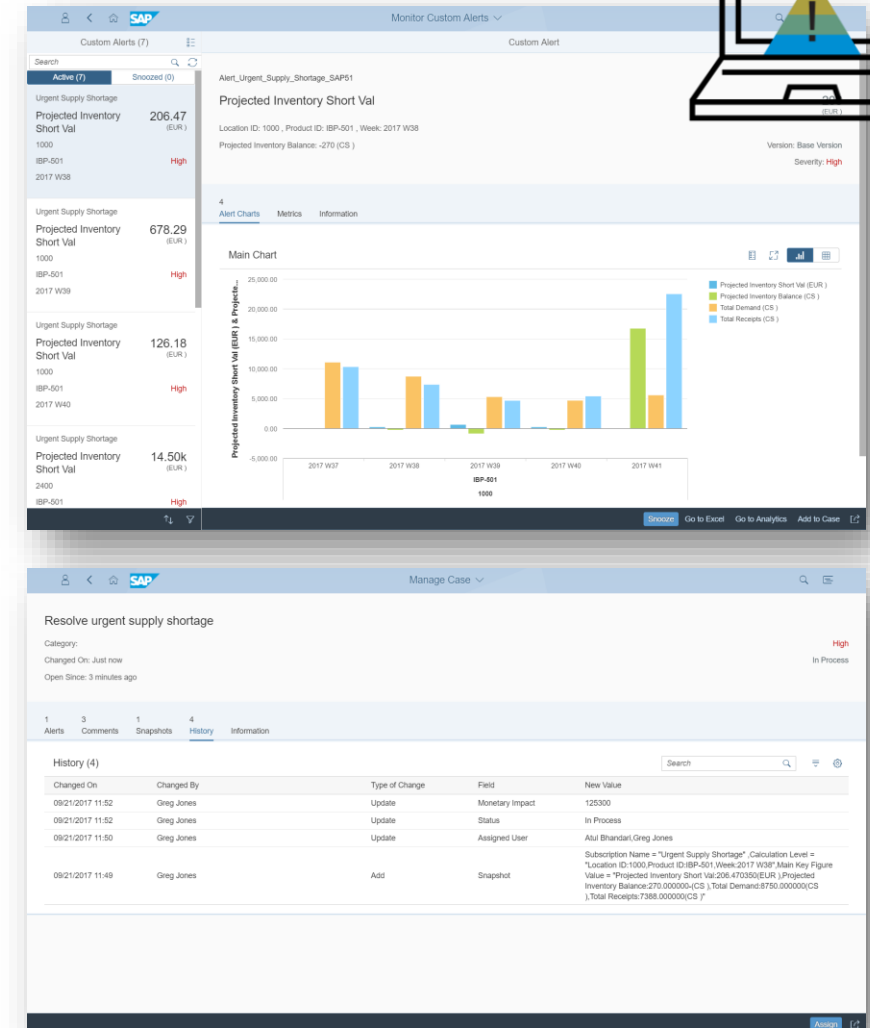


- Creating real-time reports, including user-defined charts and dashboards
- Visualize the order network, analyze the supply usage or gating factors and perform order confirmations
- Visualization capabilities via mobile devices

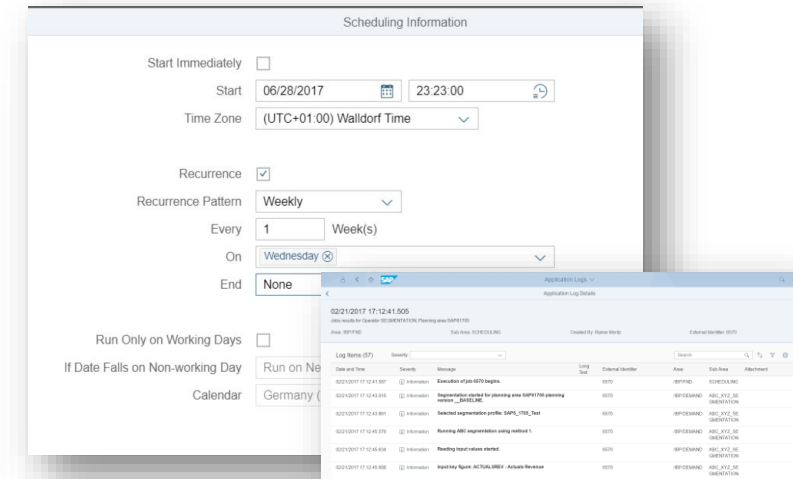
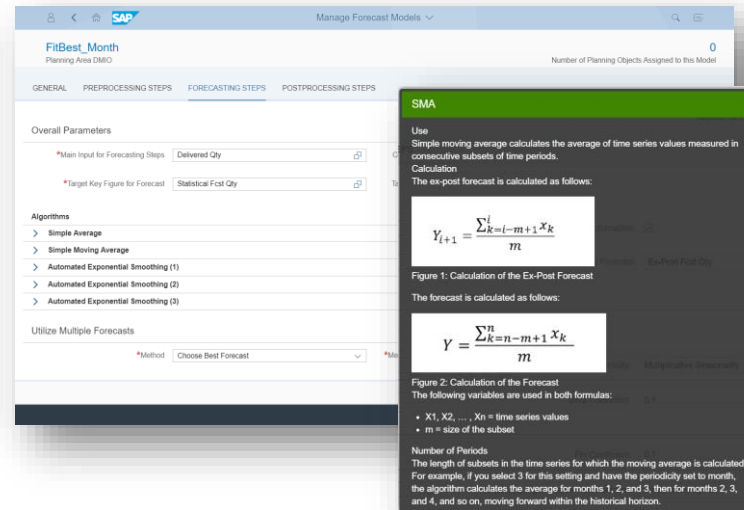
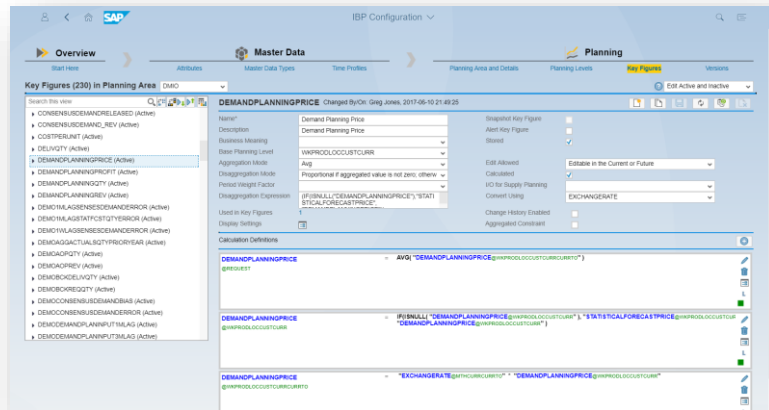
WebUI for Business Users and Planners

Exception Handling & Case Management

- Real-time alerting on critical situations within your planning processes
- Smart alerts and actionable analytics to understand the root causes of the exception
- Lean, case-based exception handling that drives collaborative actions to ultimately resolve the issue
- What-if simulation capabilities supporting robust decision processes



WebUI for Consultants and Administrators – Define how your system and processes are running every day



Model Configuration

- Flexible Planning Area set-up incl your own master data structure
- Define custom key figure calculations and disaggregation rules

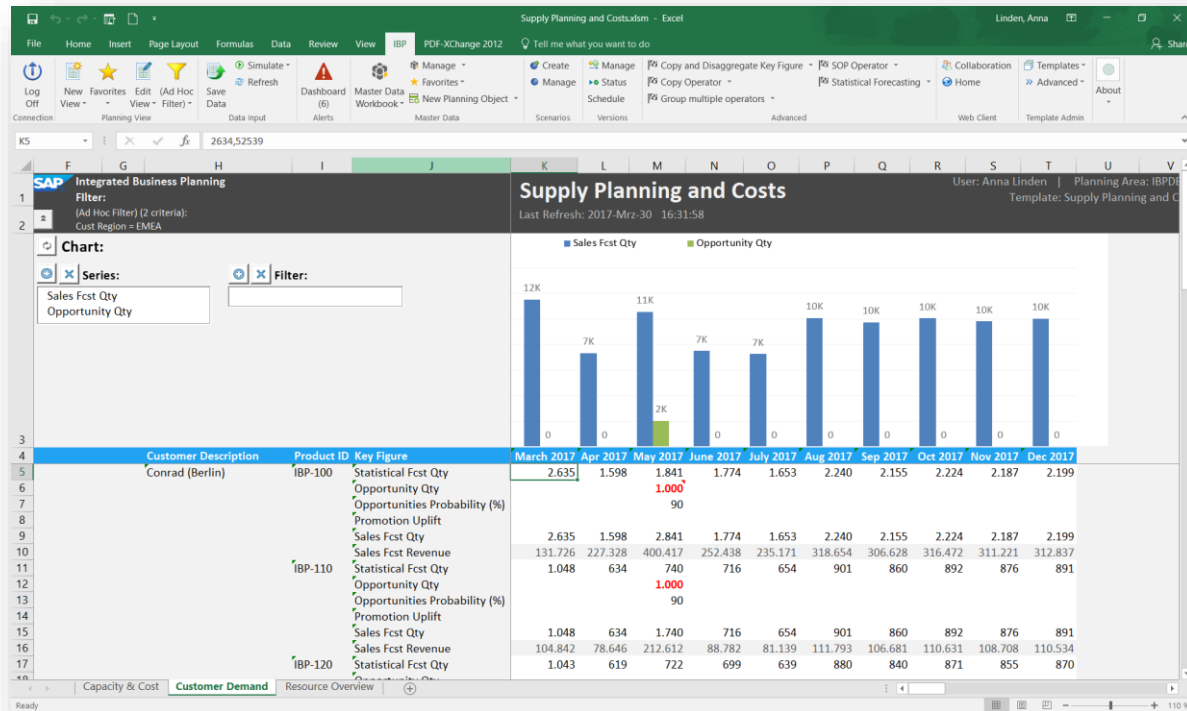
System Setup

- Users, roles and authorizations
- Planning operators such as statistical forecast models and supply optimizer

Housekeeping

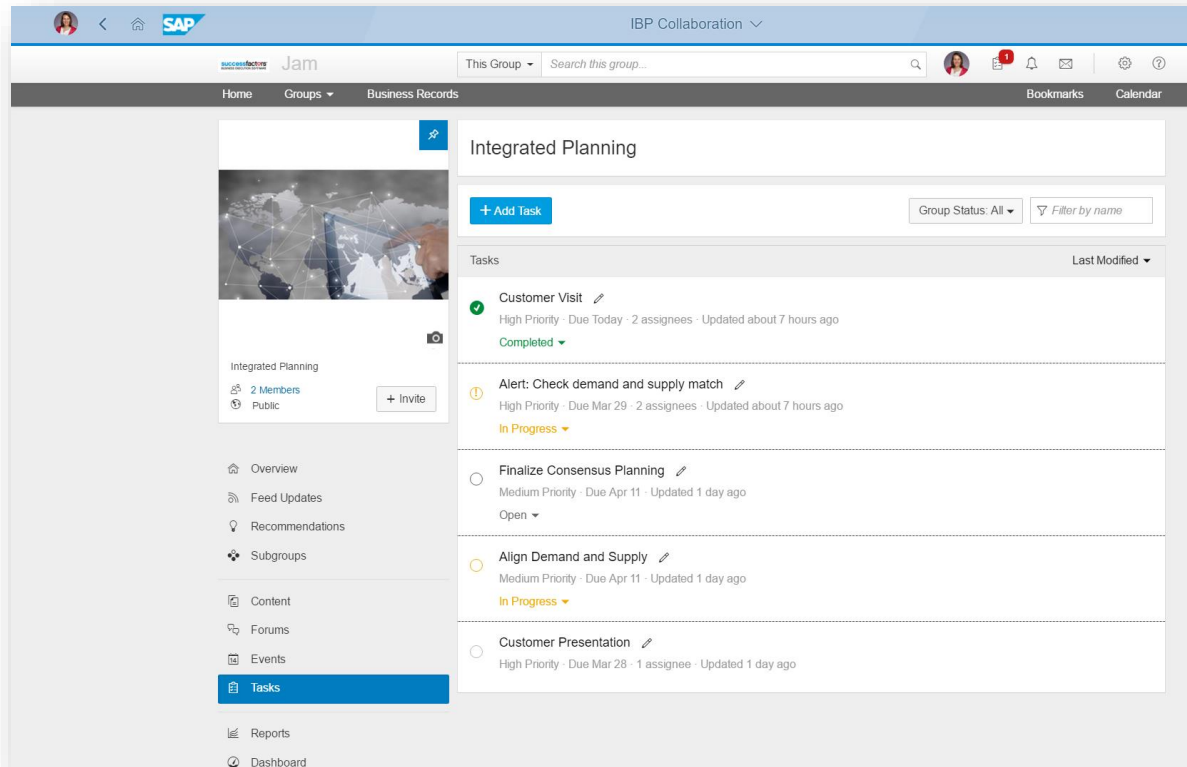
- Define and schedule application jobs and job chains
- Analyze application logs

Planning in Microsoft Excel for Professional Planners



- Real-time access to your IBP system and data, directly in Microsoft Excel
- Easily create custom Planning Views
- Visualize, analyze and adapt your master and time series data
- Simulate planning jobs for ad-hoc “what-if” analysis and create your own scenarios
- Use local key figures to quickly use your custom excel formulas on IBP data
- Use own VBA coding to further finetune your planning views and planner interaction

Social Collaboration with SAP JAM



- Embedded social collaboration platform
- Share ideas, actions and documents
- Work and report your individual tasks from the S&OP process
- IBP can post information about jobs that were run with the reason codes and comments from the planners

Advanced Planning



Advanced Planning

Different Planning Horizons

Strategic Level

- Strategic Sales & Operations Planning
- Strategic Inventory Management
- Business Planning

Tactical Level

- Sales & Operations Planning
- Inventory Optimization
- Demand Planning
- Supply and Allocations Planning

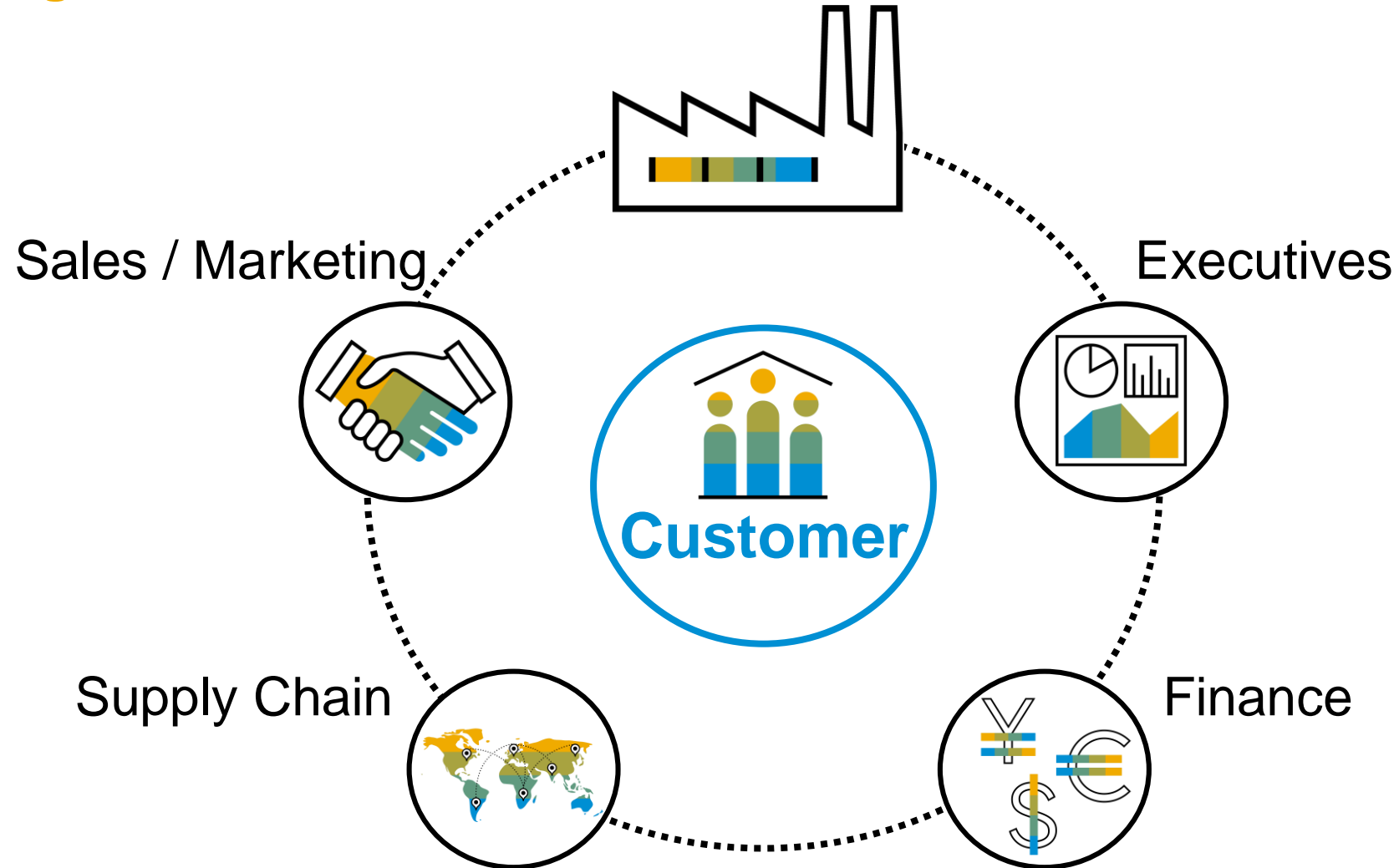
Operational Level

- Demand Sensing (Short-term Forecasting)
- Response Management:
Supply Priorities & Order Confirmation
- Deployment Planning



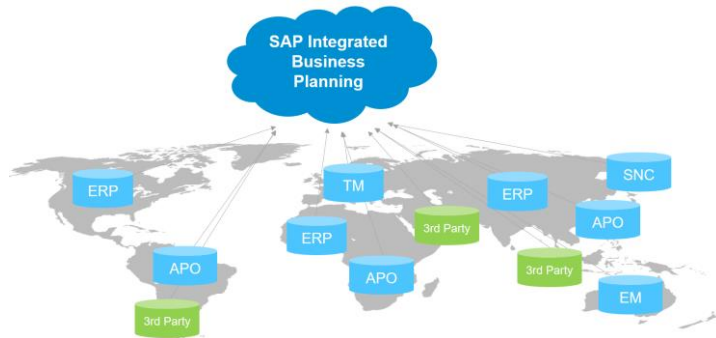
Advanced Planning

Beyond organizational boundaries



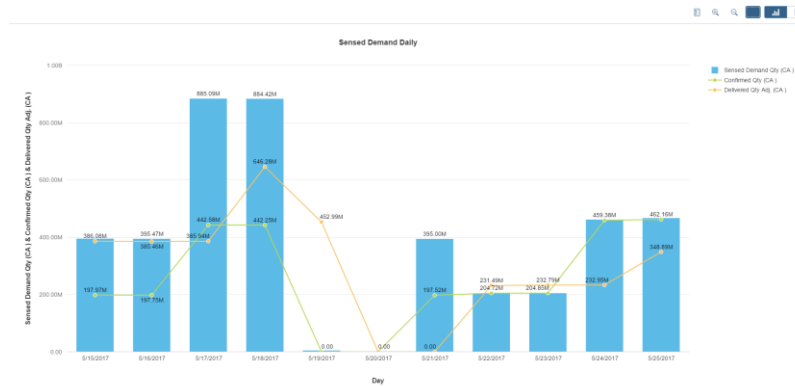
Advanced Planning Enablers

Robust Data Integration



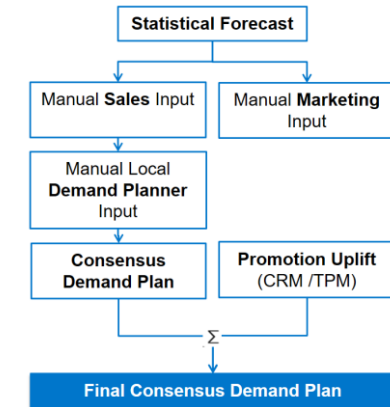
- Leverage data from different systems in your landscape, e.g. ERP, BW, or other solutions

Fast Data Processing



- Automatically cleanse your data and compute the best possible plan
- Sophisticated algorithms determine patterns in constantly growing data

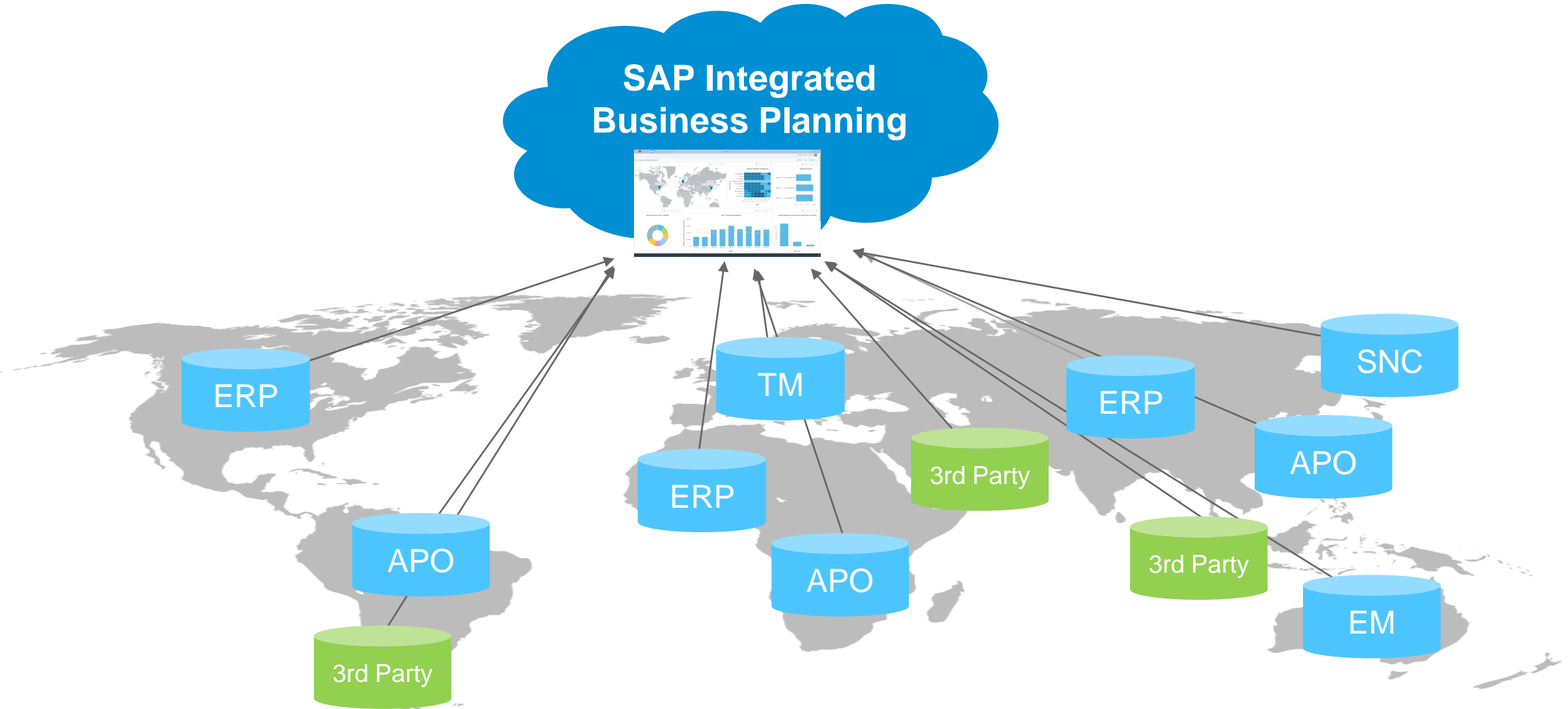
Flexible Process Modelling



- Tailor the solution towards your individual process flows
- Easily drive key decisions and planning assumptions and gather information from different stakeholders

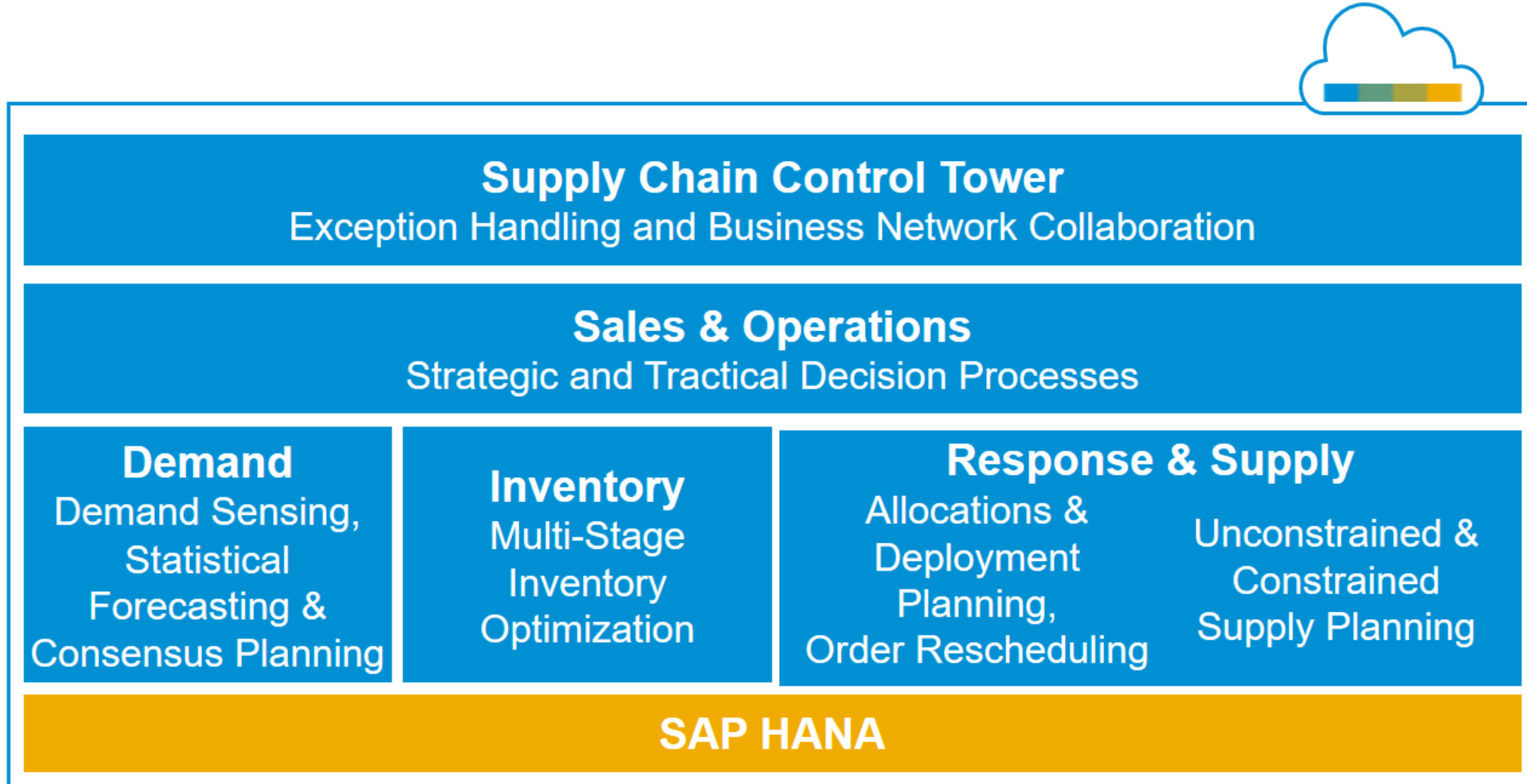
Time Series- Based Integration using SAP CPI-DS Technology

Integrating data from multiple systems



Data Processing

IBP Covering an Extensive Set of Planning Capabilities



End to End Process Modelling Example

Strategic & Tactical

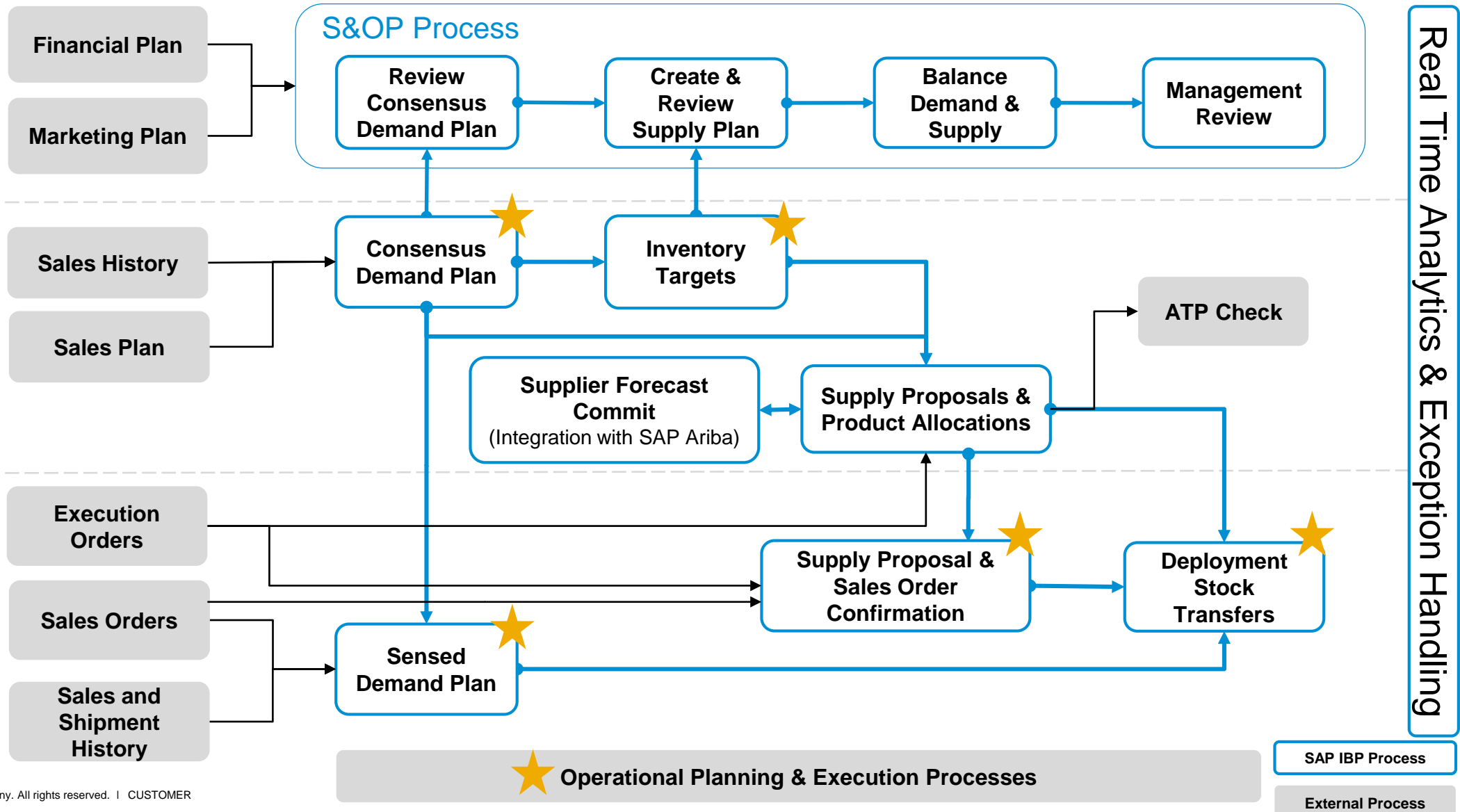
Long-term
Frequency: Monthly
Horizon: 1-3 years
Buckets: Months, Weeks

Tactical & Operational

Mid-Term
Frequency: Weekly
Horizon: 1-12 months
Buckets: Weeks, Days

Operational

Short-Term
Frequency: Daily
Horizon: 1-12 weeks
Buckets: Days

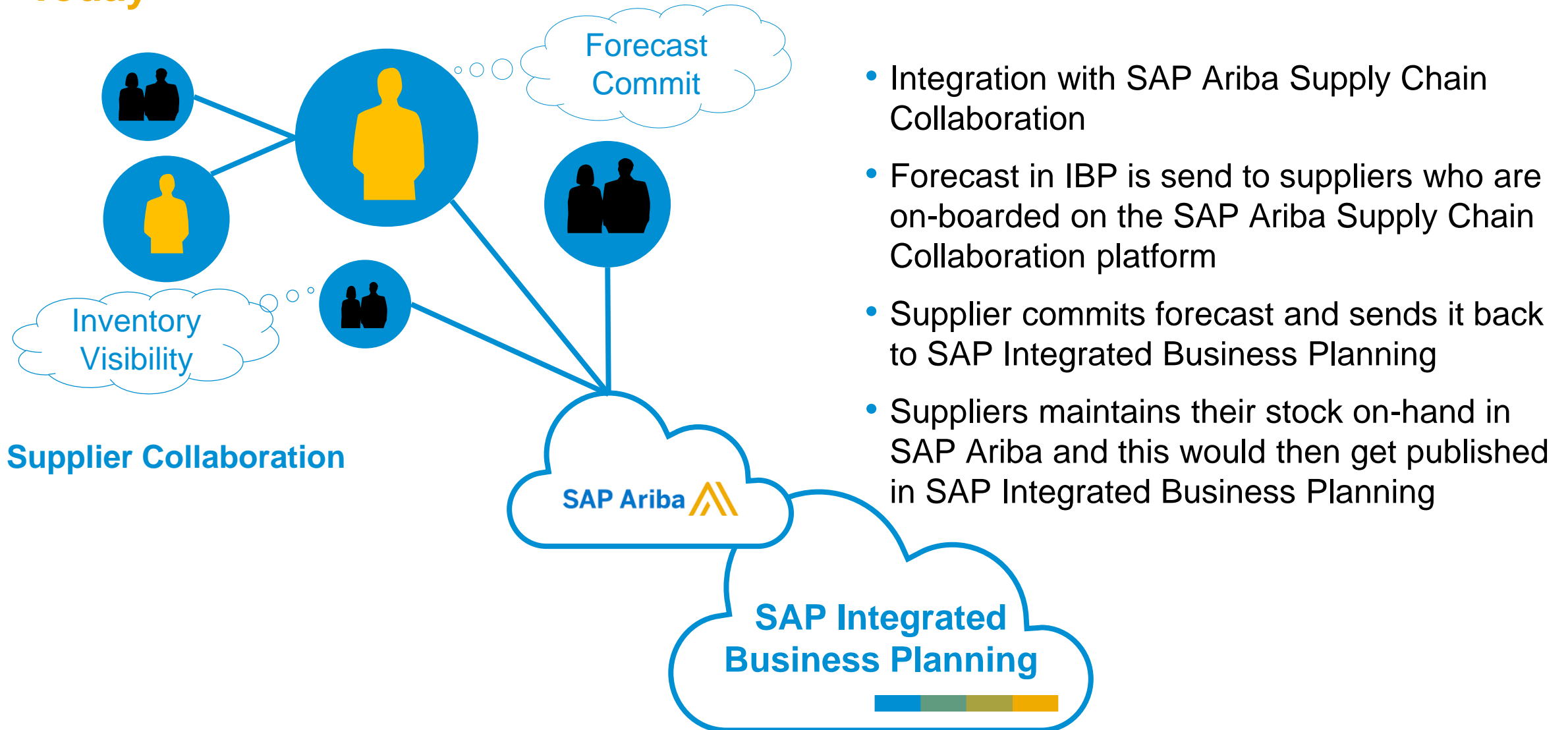


Business Network Collaboration



Business Network Collaboration with IBP

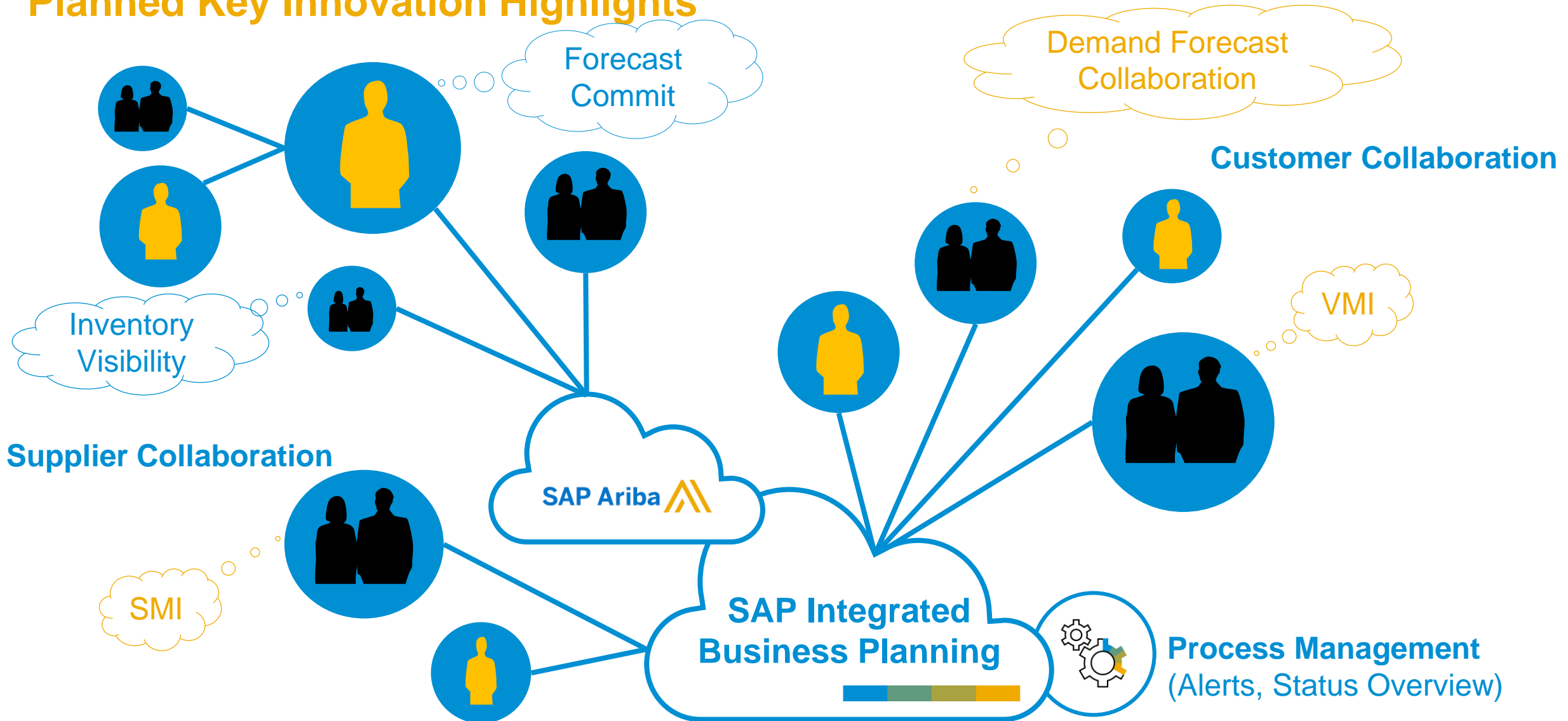
Today



Business Network Collaboration with IBP

Planned Key Innovation Highlights

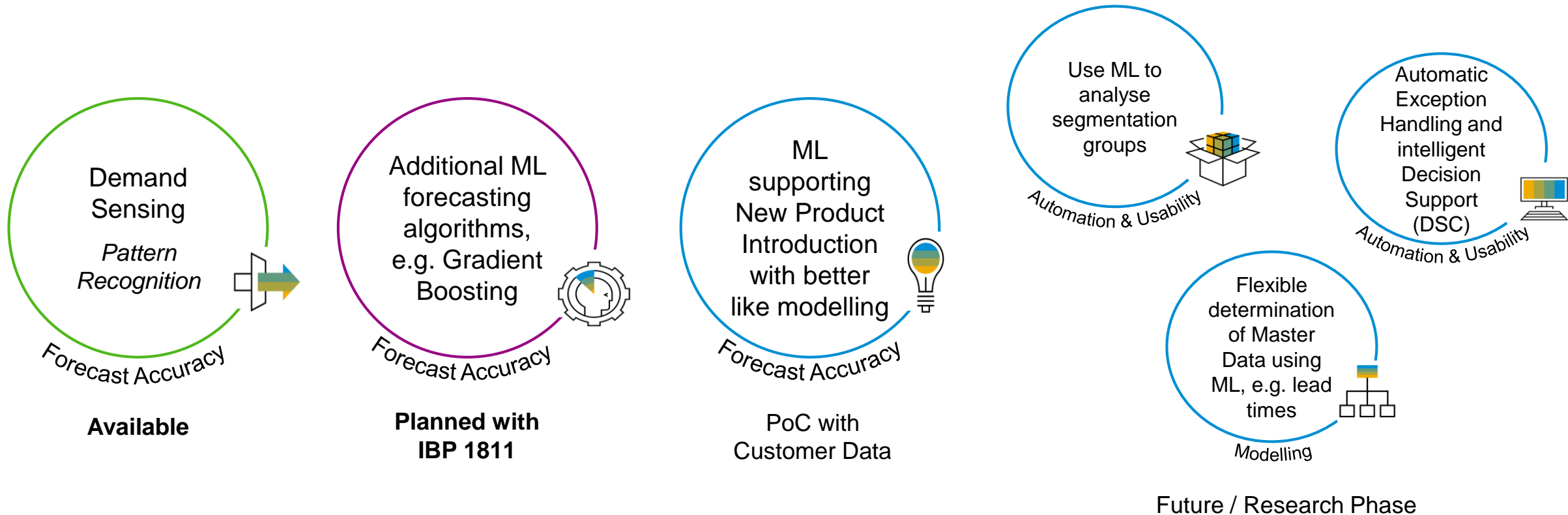
Product
direction



Machine Learning



Selected Machine Learning (ML) Use Cases in IBP



Machine Learning Customer Workgroup Established in January 2018

This is the current state of planning and may be changed by SAP at any time.

Cloud Operations



SAP Data Centers

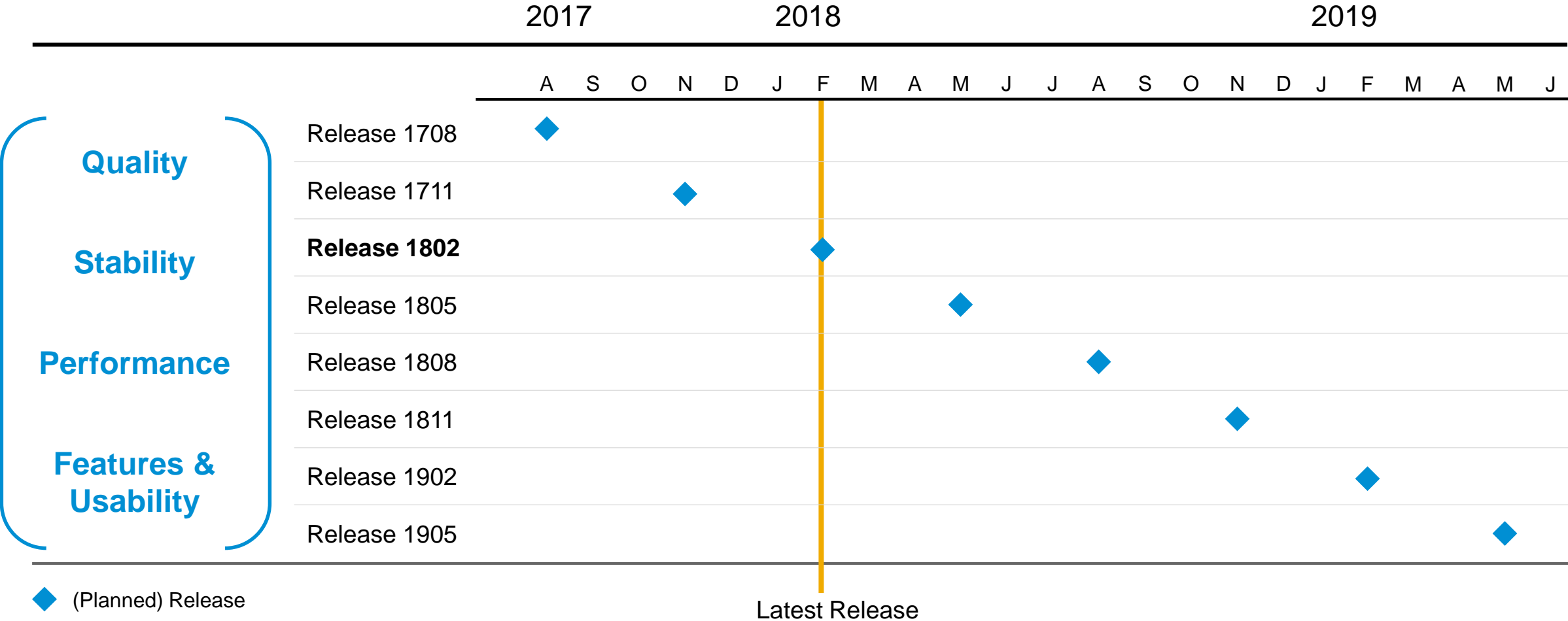
Worldwide Coverage



★ IBP Data Centers running IBP

Release Cycles

Continuous Innovation Delivered Quarterly



Wrap Up



SAP's Supply Chain Planning Solution in a Nutshell



Supply Chain Planning

SAP is the **market leader** in Supply Chain Management solutions

IBP is the new **world class platform** for end to end supply chain planning on all levels



Integration

End to end integration from planning to execution

User friendly, flexible interfaces with **fast implementation times**



Strategy

SAP offers an innovative solution portfolio that enables companies to realize **digital transformation in their supply chain**

IBP is addressing key strategic topics such as **machine learning**



Analyst Perspective

SAP is a "**Leader**" in the Gartner Magic Quadrant for both Supply Chain Planning and Sales & Operations Planning (S&OP) with its IBP solution



Industries

Major Players from 9 different industries successfully run IBP

Including Automotive, Consumer Products, Chemicals, Distribution/ Retail, High Tech, Life Sciences, Manufacturing, Mill Products & Mining, and Services industries



Partners

> 60 SAP Partners globally, focused on SAP IBP consulting practices and continuous enablement



Support & Maintenance

SAP Service and Support Professionals work **24x7 worldwide**

Highly Secure **Global Data Centers** in different regions are running IBP



Customers

350+ IBP customers live or in implementation since solution launch in 2011

Customer influence program and strong community

ASUG Annual Conference IBP sessions (June 7, 2018 – Orlando, Florida)

- ASUG10093: **SAP Roadmap: Integrated Business Planning (SAP IBP)**
- ASUG12117 Roundtable: **We Have SAP Advanced Planning & Optimization So Why/When Should We Consider SAP IBP?**
- ASUG9728: **SAP Solution Strategy for Demand-Driven Material Requirements Planning (DDMRP)**
- E61492: **Boost Collaboration with Ariba Network and SAP Integrated Business Planning**
- BA61214: **Integrate Sales and Operations Planning to Foster Collaboration and Growth**
- ASUG11995: **Financial Planning with SAP Business Planning and Consolidation, SAP Integrated Business Planning, and SAP S/4HANA**
- ASUG11619: **Inventory Optimization in SAP Integrated Business Planning in the Consumer Packaged Goods Industry**
- ASUG11042: **SAP Integrated Business Planning for Demand at Syngenta Promises Multimillion Reduction in Inventory**
- BA61215: **Digitalize Your Supply Network Through Integrated Business Planning**
- BA61223: **Address Demand with an Integrated, Real-Time Approach to Business Planning**

Easy to Learn More

Recommended links for customers and partners

- **IBP on sap.com:** <http://go.sap.com/product/scm/integrated-business-planning.html>
- **Upcoming Events, Webinars and Recorded Sessions:**
<https://wiki.scn.sap.com/wiki/display/SCM/Events+and+Webinars+for+SAP+Integrated+Business+Planning>
- SAP Online Help, Documentation & What's New: <http://help.sap.com/ibp>
- Roadmap: <https://www.sap.com/products/roadmaps.html>
→ Browse all Road Maps → Products and Solutions → Internet of Things and Digital Supply Chain → Supply Chain
- SAP Community Page: <http://scn.sap.com/community/scm/ibp>
- Customer Influence Program: <https://influence.sap.com/sap/ino/#/campaign/21>
- Starter Edition Offering, incl RDS content:
<https://www.sapstore.com/solutions/60032/SAP-Integrated-Business-Planning-starter-edition%2C-non-production>
- Innovation Discovery including Early Knowledge Transfer (EKT) content:
<https://zinnovationdiscovery-supportportal.dispatcher.hana.ondemand.com/#/innovations/searchid=0090FABF323E1ED6939F322BE038E0CA>

Thank you.

Contact information:

Anna Linden

Product Manager – SAP Integrated Business Planning

SAP SE, Walldorf, Germany

anna.linden@sap.com

© 2017 SAP SE or an SAP affiliate company. All rights reserved.

No part of this publication may be reproduced or transmitted in any form or for any purpose without the express permission of SAP SE or an SAP affiliate company.

The information contained herein may be changed without prior notice. Some software products marketed by SAP SE and its distributors contain proprietary software components of other software vendors. National product specifications may vary.

These materials are provided by SAP SE or an SAP affiliate company for informational purposes only, without representation or warranty of any kind, and SAP or its affiliated companies shall not be liable for errors or omissions with respect to the materials. The only warranties for SAP or SAP affiliate company products and services are those that are set forth in the express warranty statements accompanying such products and services, if any. Nothing herein should be construed as constituting an additional warranty.

In particular, SAP SE or its affiliated companies have no obligation to pursue any course of business outlined in this document or any related presentation, or to develop or release any functionality mentioned therein. This document, or any related presentation, and SAP SE's or its affiliated companies' strategy and possible future developments, products, and/or platform directions and functionality are all subject to change and may be changed by SAP SE or its affiliated companies at any time for any reason without notice. The information in this document is not a commitment, promise, or legal obligation to deliver any material, code, or functionality. All forward-looking statements are subject to various risks and uncertainties that could cause actual results to differ materially from expectations. Readers are cautioned not to place undue reliance on these forward-looking statements, and they should not be relied upon in making purchasing decisions.

SAP and other SAP products and services mentioned herein as well as their respective logos are trademarks or registered trademarks of SAP SE (or an SAP affiliate company) in Germany and other countries. All other product and service names mentioned are the trademarks of their respective companies.

See <http://global.sap.com/corporate-en/legal/copyright/index.epx> for additional trademark information and notices.