



# **SAP Early Adopter Care**

## **SAP Translation Hub**

# Legal disclaimer

The information in this presentation is confidential and proprietary to SAP and may not be disclosed without the permission of SAP. This presentation is not subject to your license agreement or any other service or subscription agreement with SAP. SAP has no obligation to pursue any course of business outlined in this document or any related presentation, or to develop or release any functionality mentioned therein. This document, or any related presentation, and SAP's strategy and possible future developments, products, and platforms, directions, and functionality are all subject to change and may be changed by SAP at any time for any reason without notice. The information in this document is not a commitment, promise, or legal obligation to deliver any material, code, or functionality. This document is provided without a warranty of any kind, either express or implied, including but not limited to the implied warranties of merchantability, fitness for a particular purpose, or noninfringement. This document is for informational purposes and may not be incorporated into a contract. SAP assumes no responsibility for errors or omissions in this document, except if such damages were caused by SAP's willful misconduct or gross negligence.

All forward-looking statements are subject to various risks and uncertainties that could cause actual results to differ materially from expectations. Readers are cautioned not to place undue reliance on these forward-looking statements, which speak only as of their dates, and they should not be relied upon in making purchasing decisions.

# Agenda

## Overview SAP Translation Hub

Early Adopter Care Program

Q&A

# SAP Translation Hub

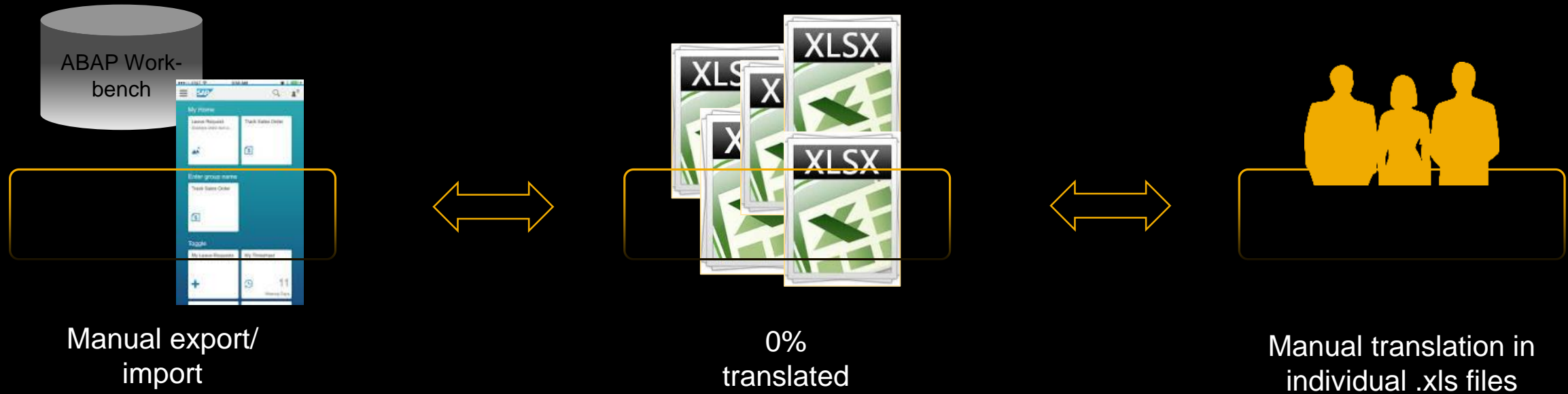
## Introduction



A successful application has to target a global audience, and software needs to speak the customers' language.

- SAP Translation Hub is an SAP Cloud Platform service that opens the door to the wealth of SAP's translation experience across multiple products and languages.
- SAP customers and partners can use the service to quickly get translations for field labels and buttons on their application user interfaces into various languages.

# Challenges for Customers



> e.g. 8 weeks, 3 FTE + translators + 2 €/app:

High coordination/admin effort and time  
High manual translation effort and cost

# SAP Translation Hub – Core Values

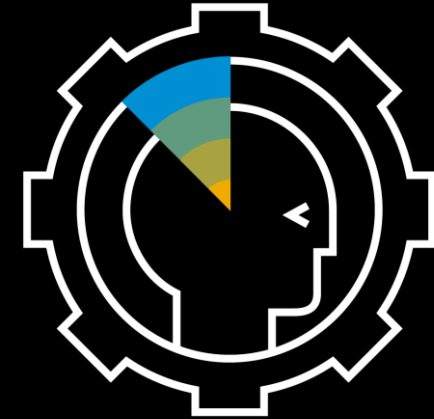
SAP Translation Hub closes a significant market gap by providing:



Integration



Translation  
Data &  
Technologies



Human in the  
Loop

# SAP Translation Hub

## Key Features



SAP Multilingual Text Repository



Connection to onPrem systems



40 languages are supported



Integration into SAP Products;  
IDE's or apps



Accessible via web services (APIs)



Integration of customer terminology



SAP Machine Translation



User interface with quality index for  
review and post-editing

# SAP Translation Hub

## Benefits

### Time Savings



Quicker translation  
turnaround for  
faster go-to-market

### Cost Savings



Lower costs by  
leveraging repository  
of existing translations

### UX



Improved local  
end user  
experience

### Terminology



Accurate, consistent  
use of SAP's and  
your own terminology

# SAP Translation Hub

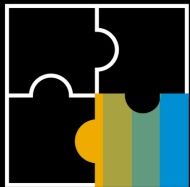
## Use Cases



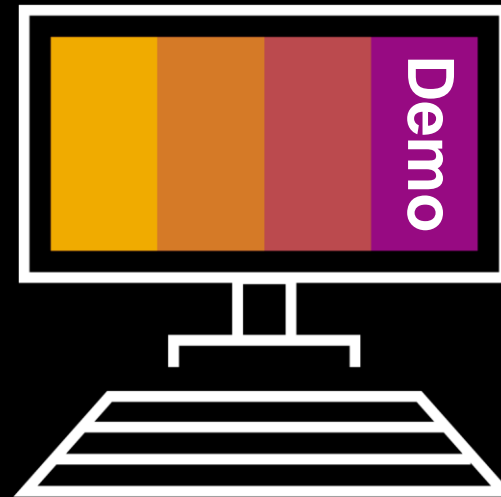
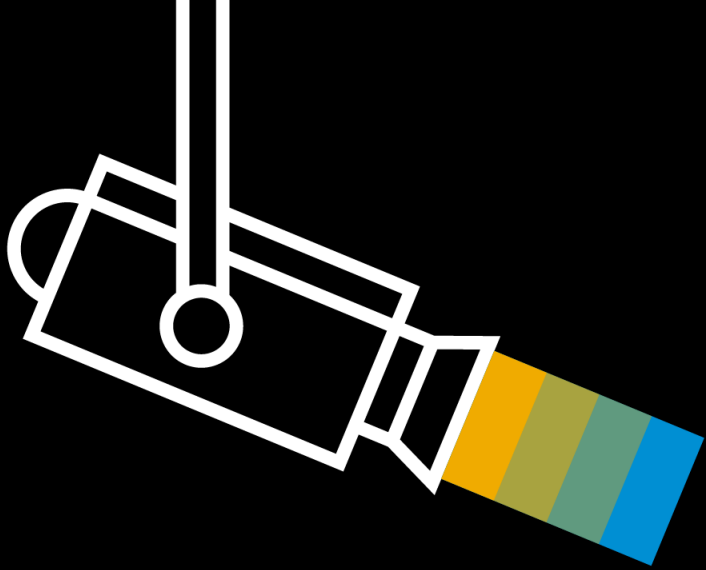
SAP Business Suite or SAP S/4HANA customers can translate customer-specific ABAP texts



Any application developer using standard programming languages can create UI translations for their own app as integrated part of the development process

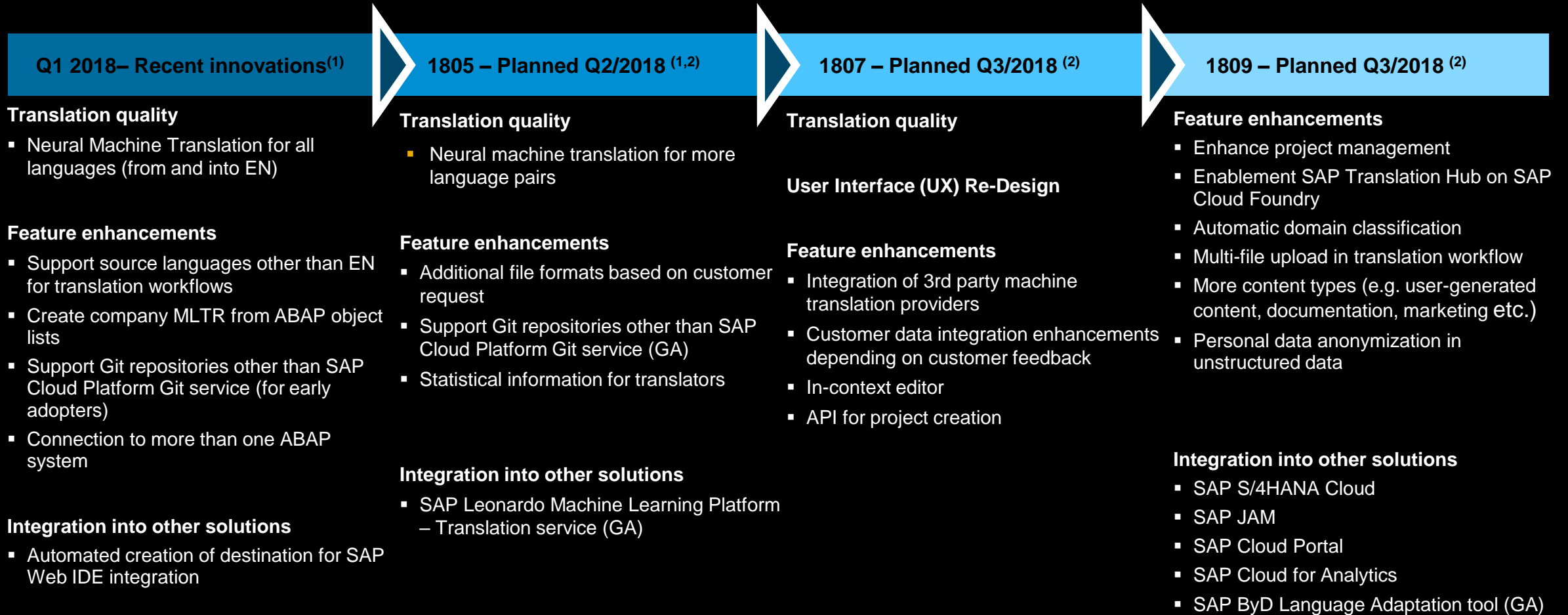


Consumption of SAP Translation Hub in other SAP products  
(e.g. *SAP WEB IDE; IOS SDK Assistance App, SAP Business ByDesign*)



# SAP Translation Hub

## Product road map overview



1. Potential Data Protection & Privacy features include: Simplified deletion of personal data; reporting of personal data to an identified data subject; restricted access to personal data; masking of personal data; read access logging to special categories of personal data; change logging of personal data; and consent management mechanisms. 2. This is the current state of planning and may be changed by SAP at any time without notice.

# SAP Translation Hub

## Sucess Stories

### SAP Customer & Partner



Watch this [video](#) to learn how **itelligence AG** uses SAP Translation Hub on the SAP Cloud Platform to support their global business



Read the SAP Business Transformation [Study](#) from **Axians**



**T.CON Story:** Lowering Costs and Accelerating Rollouts with SAP Translation Hub



**Utopia & text&form Story:** How Has a Data Solutions Company Lowered Translation Costs and Delivered Local-Language User Interfaces to Customers Worldwide?

### SAP Products



To break down language barriers, SAP offers automatic translation for SAP Notes and SAP Knowledge Base Articles (KBAs) in the [SAP ONE Support Launchpad](#).



Since May 2018 [openSAP](#) uses neural machine learning technology powered by SAP Translation Hub, to integrate German, French, and Spanish subtitles for video content and transcripts in current and future courses.

# SAP Translation Hub

## Summary

SAP Translation Hub is a service on the SAP Cloud Platform which can be used for nonABAP and ABAP translation requests

Next steps:            Get SAP Cloud Platform Account (free trial)  
                          Enable SAP Translation Hub in Cloud Cockpit and use tutorials to explore the service

### Further Information



[What is SAP Translation Hub?](#)



[SAP Translation Hub Roadmap](#)



[User Assistance](#)



[SAP Translation Hub Videos](#)



[SAP Translation Hub Blog posts](#)



[SAP Translation Hub Tutorials](#)



[SAP Translation Hub JAM group](#)

### Staying connected



[e-mail](#)



Sign up for our [Newsletter](#)  
and [Maintenance DL](#)



[YouTube](#)



[#saptranslationhub](#)



[SAP Community](#)



[Discussion Forum](#)

### Where can you buy it?



[SAP Store](#)



Ask your SAP Account Owner  
[Subscription and consumption based model on SAP Cloud Platform available](#)

# Agenda

Overview SAP Translation Hub

**Early Adopter Care Program**

Q&A

# SAP Early Adopter Care

## Early Adopter Care enables customers to

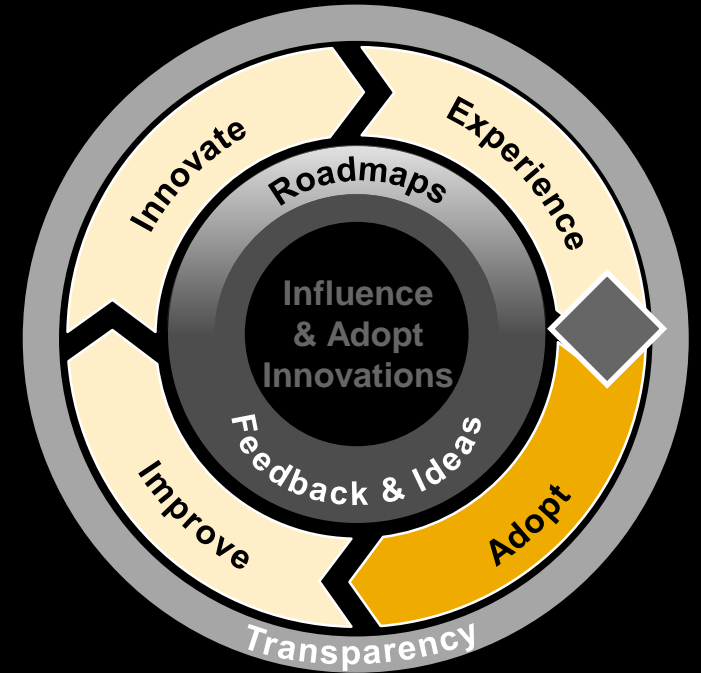
- Get support with your early implementation of SAP's latest releases via an Early Adoption Care program in close collaboration with SAP with a dedicated back-office support infrastructure in place to safeguard your project and minimize risks
- Access to Early Knowledge transfer (EKT) at no additional costs

## Your impact on SAP

- Direct interaction with development providing first hand feedback
- Bring in the customer voice to influence future releases

## How to get engaged with us?

- Start participating early on in the development of a new product/ release via the Customer Engagement Initiative (CEI) or Beta
- Visit [influence.sap.com](https://influence.sap.com) for upcoming Early Adoption opportunities for your SAP or Partner led implementation project
- We provide you a dedicated Early Adopter Project Coach



# SAP Early Adopter Care in Detail

## SAP Translation Hub


### Registration Information

- You can register for the Early Adopter Care Program until **May 31** via <https://influence.sap.com/sap/ino/#/campaign/1397>
- In case you have questions, please contact Holger Junghanns ([ho.junghanns@sap.com](mailto:ho.junghanns@sap.com)).

SAP Early Adopter Care

SAP Translation Hub

Registration ends on May 1, 2018  
Status: Active  
19



#### SAP Translation Hub

##### Join

- **Customer** participation will be confirmed upon review/approval of the project scope completed in the following online form.  
[Register as customer](#)

##### Product Information

- [SAP Cloud Platform website for SAP Translation Hub](#)

##### Key Data

- Registration Start: **March 15, 2018**
- Release to Customer: **December 14, 2017**
- Registration End: **April 30, 2018**
- Early Adopter Care Program Lead: [Holger Junghanns](#)

Refer to [PAM](#) for release information.

For additional support/inquiries please contact your Account Executive or the Early Adopter Care Program Lead.

##### Prerequisites

Participation in the Early Adopter Care program is voluntary, at the sole discretion of SAP, and dependent on the following prerequisites:

- None

##### Disclaimers\*

# Agenda

Überblick SAP Translation Hub

Early Adopter Care Programm

**Q&A & Poll**



## Contact Information:

Bea Pasch: [beatrice.pasch@sap.com](mailto:beatrice.pasch@sap.com)

Marcus Danei: [marcus.danei@sap.com](mailto:marcus.danei@sap.com)

[sap.com](https://sap.com)

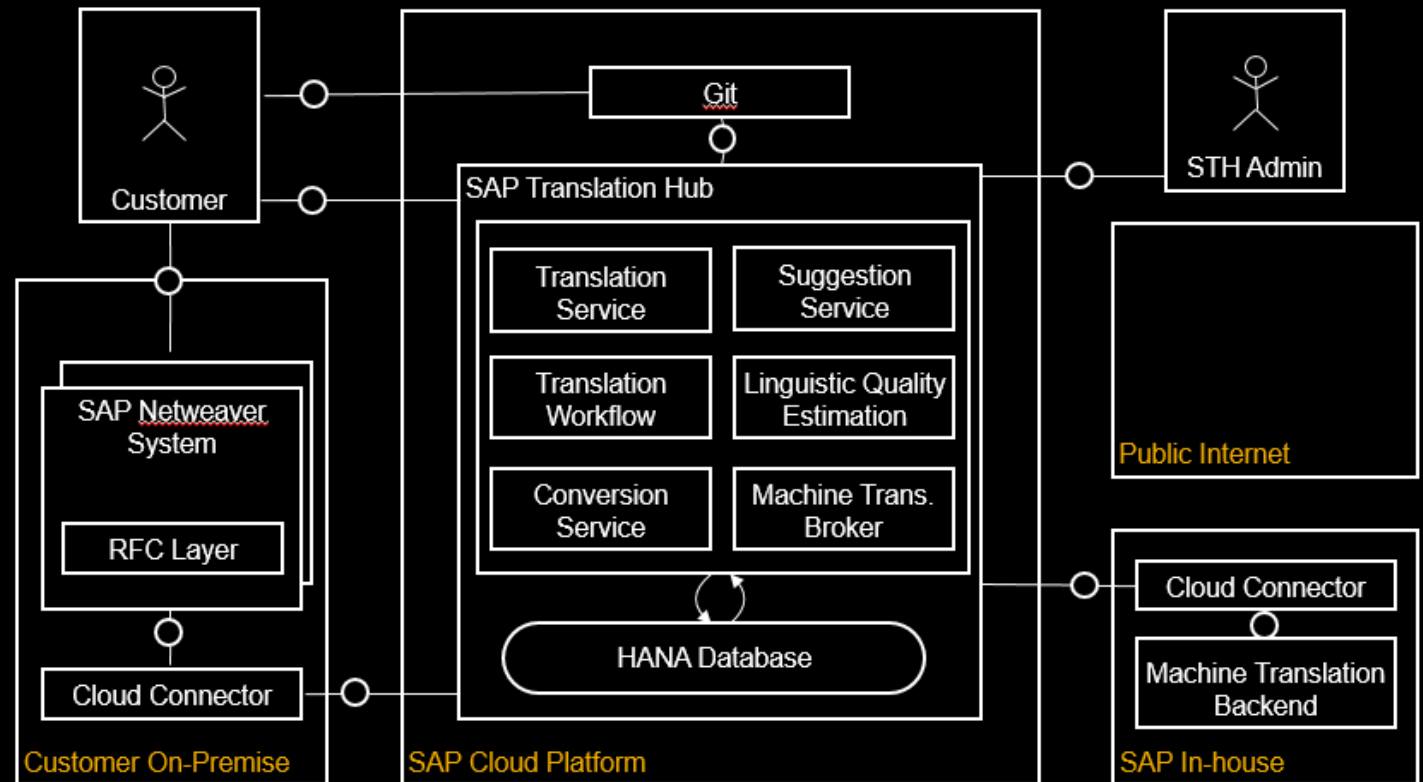
[saptranslationhub@sap.com](mailto:saptranslationhub@sap.com)

# SAP Translation Hub

## Use Case in detail: Translating ABAP Short Texts Using an RFC

Prerequisites (see [Docu](#)):

- Cloud Connector
- SAP Cloud Platform Account
- RFC Layer
- Object lists in ABAP system



## Additional Information

- Video SAP Translation Hub – [Translating Texts from ABAP Systems Using an RFC](#)
- openSAP course [SAP Translation Hub in a Nutshell](#) (different units)

# SAP Translation Hub

## Pricing Overview

- **SAP Translation Hub** is available as **individual service type** (so-called “**A-la-carte Service**”) on the **SAP Cloud Platform**
- Simple pricing on a **yearly** basis: **39 EUR for 1 bucket = 100,000 translated characters**
- Minimum consumption per 12 calendar months: **1 bucket**
- **Definition of the new metric “character”:**

The Usage Metric for the Cloud Service is blocks of 100,000 characters per year returned to Customer as translated text, including whitespace characters. Characters with multiple bytes are counted as a single character (e.g. zhCN).

- **Example calculation:**

Amount of characters	bucket size in characters	How many buckets are needed?	Price for 1 bucket	Total Price
100,000	100,000	1	39 EUR	39 EUR
1,000,000		10		390 EUR
10,000,000		100		3,900 EUR
100,000,000		1,000		39,000 EUR
500,000,000		5,000		195,000 EUR

- License material **8005694**
- *Link external* [SAP Cloud Platform pricelist – a-la carte services](#) and [SAP Partner Price List](#)

# SAP Translation Hub

## Pricing – FAQ

1. How to calculate as a customer the amount of characters per year?

- In future we will offer the volume estimator
- So far you can use this example calculation as reference

Fiori Apps	Amount of characters for one app (Source Language)	Total amount of characters (Source Language)	Target languages	Total amount of characters for all target languages + 30% *	How many Buckets are needed?
10	2,200	22,000	10	286,000	3

Word	Amount of characters for word (Source Language)	Total amount of characters (Source Language)	Target languages	Total amount of characters for all target languages + 30% *	How many Buckets are needed?
10,000	6	60,000	10	780,000	8

UI text row	Amount of characters for one row (Source Language)	Total amount of characters (Source Language)	Target languages	Total amount of characters for all target languages + 30% *	How many Buckets are needed?
1,000	22	22,000	10	286,000	3

2. Does the number of different languages play a role in the licensing or are all target languages included in the € 39? Or do you need to buy separate characters for each target language?

No the amount of target languages is not relevant – it counts the overall sum of tra

\* Uplift for different language length, e.g. starting from English most target languages use more characters  
more details for different source languages are explained in note [2269873 - UI text space calculator 1.4](#)



© 2018 SAP SE or an SAP affiliate company. All rights reserved.

No part of this publication may be reproduced or transmitted in any form or for any purpose without the express permission of SAP SE or an SAP affiliate company.

The information contained herein may be changed without prior notice. Some software products marketed by SAP SE and its distributors contain proprietary software components of other software vendors. National product specifications may vary.

These materials are provided by SAP SE or an SAP affiliate company for informational purposes only, without representation or warranty of any kind, and SAP or its affiliated companies shall not be liable for errors or omissions with respect to the materials. The only warranties for SAP or SAP affiliate company products and services are those that are set forth in the express warranty statements accompanying such products and services, if any. Nothing herein should be construed as constituting an additional warranty.

In particular, SAP SE or its affiliated companies have no obligation to pursue any course of business outlined in this document or any related presentation, or to develop or release any functionality mentioned therein. This document, or any related presentation, and SAP SE's or its affiliated companies' strategy and possible future developments, products, and/or platform directions and functionality are all subject to change and may be changed by SAP SE or its affiliated companies at any time for any reason without notice. The information in this document is not a commitment, promise, or legal obligation to deliver any material, code, or functionality. All forward-looking statements are subject to various risks and uncertainties that could cause actual results to differ materially from expectations. Readers are cautioned not to place undue reliance on these forward-looking statements, and they should not be relied upon in making purchasing decisions.

SAP and other SAP products and services mentioned herein as well as their respective logos are trademarks or registered trademarks of SAP SE (or an SAP affiliate company) in Germany and other countries. All other product and service names mentioned are the trademarks of their respective companies.

See <http://global.sap.com/corporate-en/legal/copyright/index.epx> for additional trademark information and notices.