

# **Best Practices:**

## **How customers and partners use SAP Cloud Platform today**

Carsten Boennen, Dr. Wolfgang Weiss, SAP SE  
Product Management SAP Cloud Platform  
23. – 24.07.2018

# Disclaimer

The information in this presentation is confidential and proprietary to SAP and may not be disclosed without the permission of SAP. Except for your obligation to protect confidential information, this presentation is not subject to your license agreement or any other service or subscription agreement with SAP. SAP has no obligation to pursue any course of business outlined in this presentation or any related document, or to develop or release any functionality mentioned therein.

This presentation, or any related document and SAP's strategy and possible future developments, products and or platforms directions and functionality are all subject to change and may be changed by SAP at any time for any reason without notice. The information in this presentation is not a commitment, promise or legal obligation to deliver any material, code or functionality. This presentation is provided without a warranty of any kind, either express or implied, including but not limited to, the implied warranties of merchantability, fitness for a particular purpose, or non-infringement. This presentation is for informational purposes and may not be incorporated into a contract. SAP assumes no responsibility for errors or omissions in this presentation, except if such damages were caused by SAP's intentional or gross negligence.

All forward-looking statements are subject to various risks and uncertainties that could cause actual results to differ materially from expectations. Readers are cautioned not to place undue reliance on these forward-looking statements, which speak only as of their dates, and they should not be relied upon in making purchasing decisions.

# Agenda

Digital Platform for Intelligent Enterprises

Extend Cloud and On-Prem Apps

Integrate Apps, Data and Processes

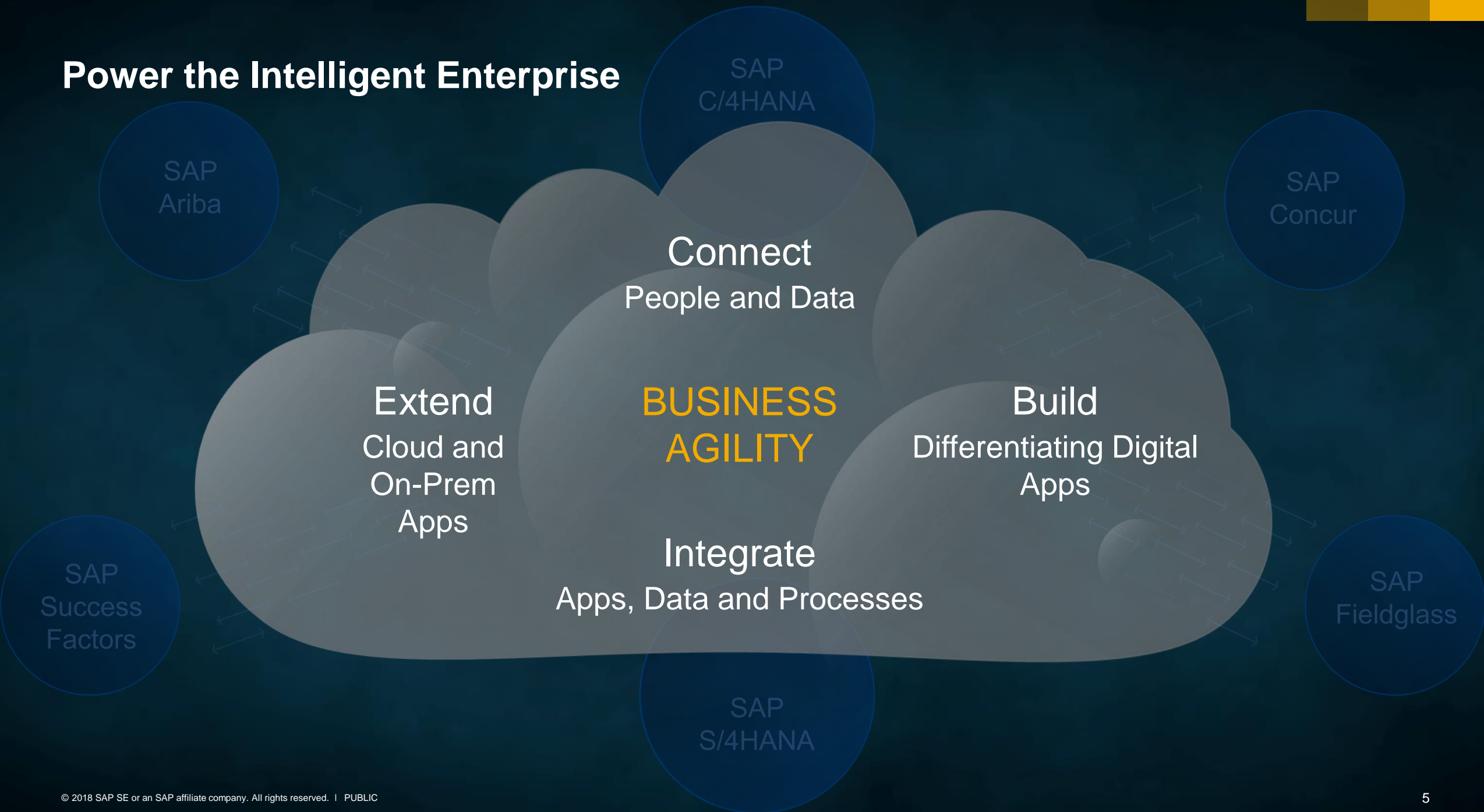
Build Differentiating Digital Apps

Connect People and Data

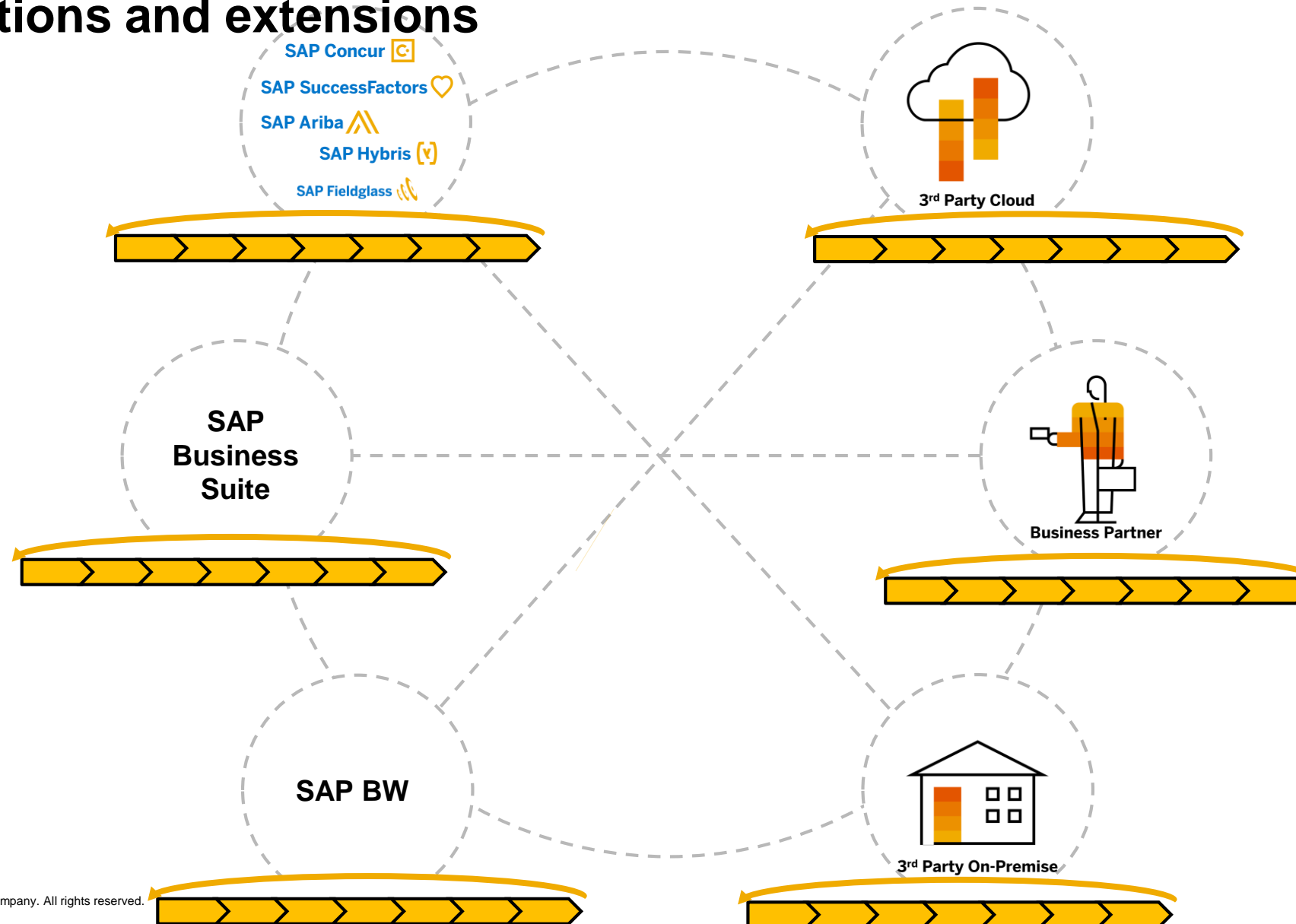
Summary

# **Digital Platform for Intelligent Enterprises**

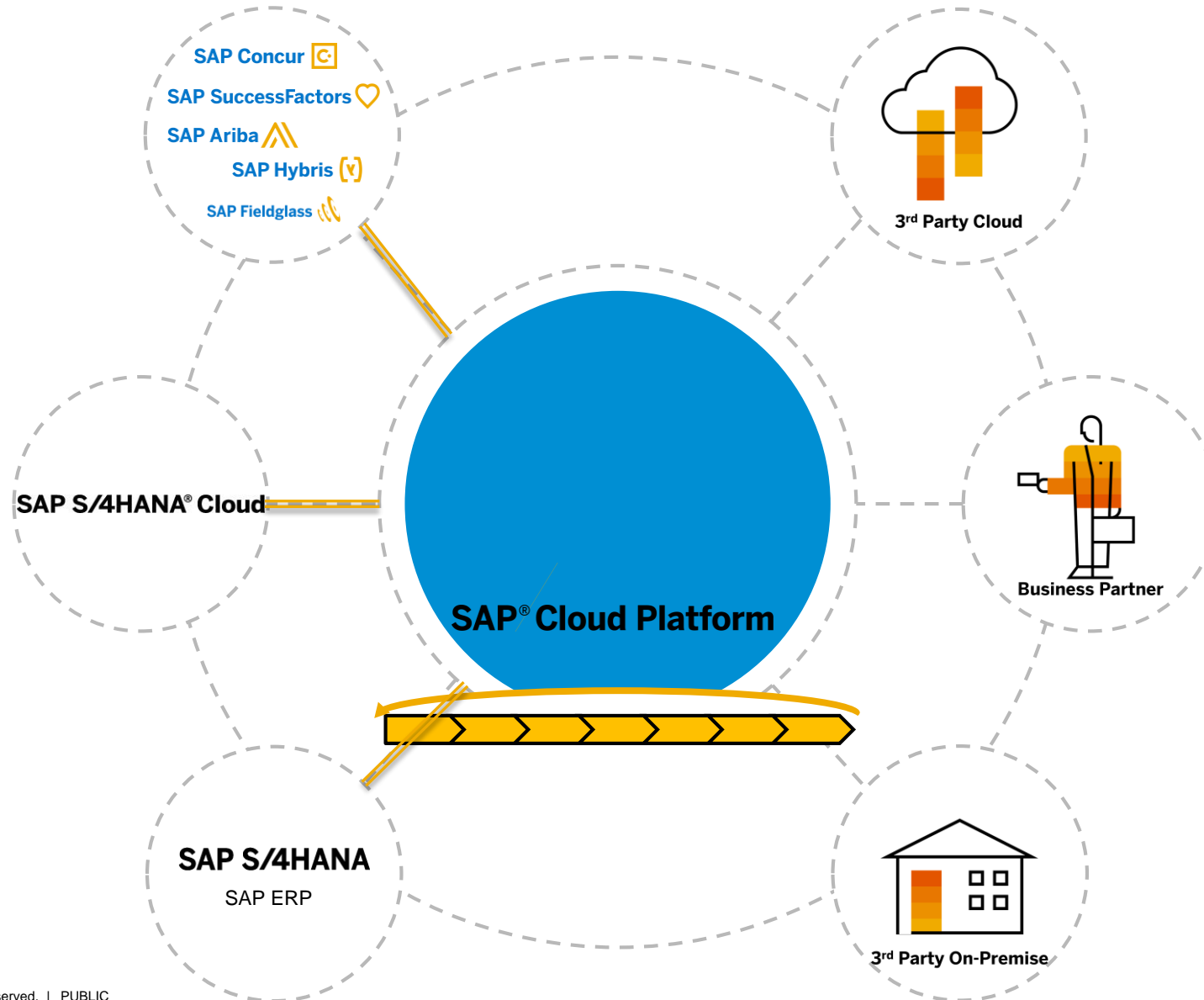
# Power the Intelligent Enterprise



# Gridlock of custom development caused by complexity of traditional modifications and extensions



# De-coupling enables flexible release strategy and shorter innovation cycle

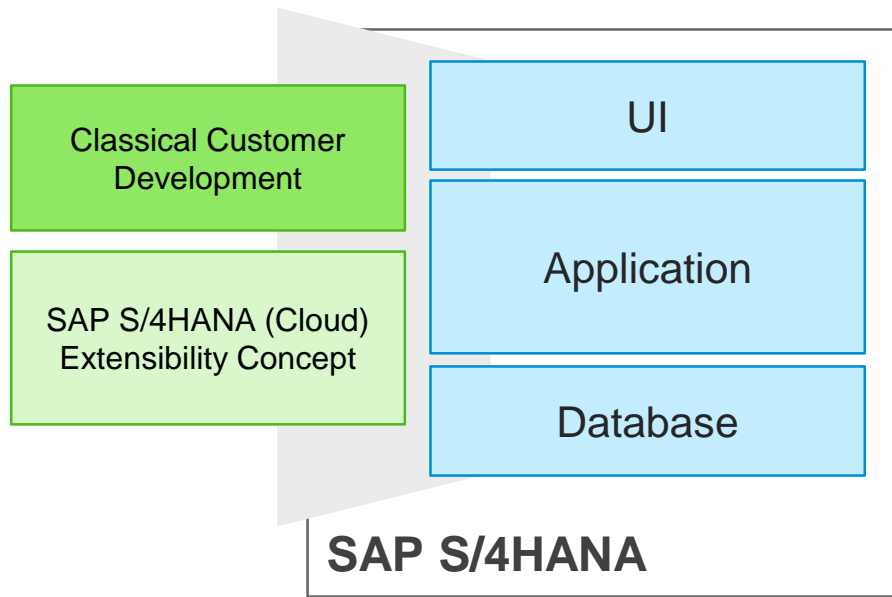


**Extend Cloud and On-Prem Apps**

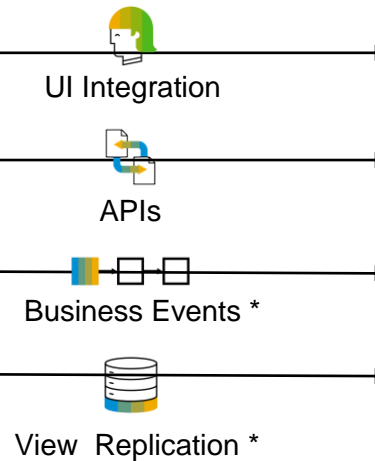
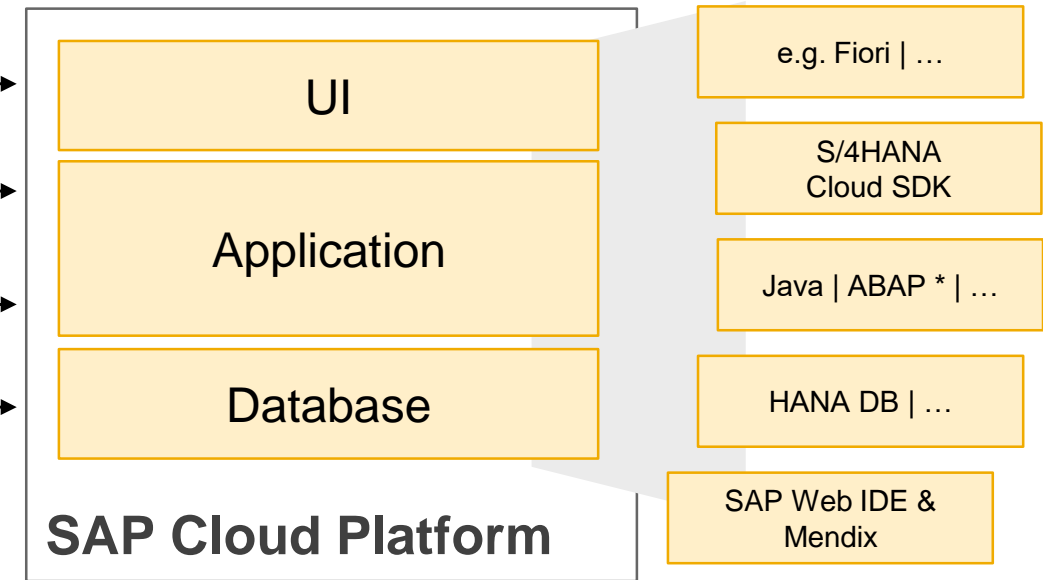
**Focus on extensions of SAP Business Suite and SAP S/4HANA**

# Extensions of SAP S/4HANA and SAP Business Suite

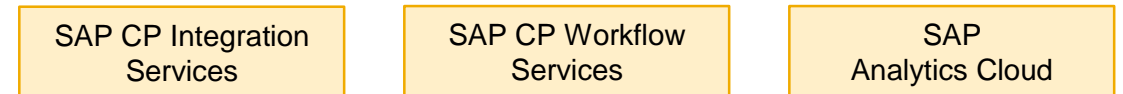
## In-app Extensibility



## Side-by-Side Extensibility



*typical architecture*



SAP Identity Management

# Roche Connected Health – Diabetes Care



About **347 million people** worldwide have **diabetes**.



Enable doctors to follow the progress of their patients in **real time**. If indicators change, the health expert receives an **alert** and **can send messages** or set new goals for the patient. They can also send a **request to schedule an appointment** to discuss further treatments.

# Danone

## Powering a B2B Self-Service e-Commerce Site with SAP Cloud Platform



"With SAP Cloud Platform Portal we can extend our business at Danone by creating attractive, highly functional websites using a reliable and secured backed connectivity."

*Ged Hurst, Head of Development, Danone*

### Explore Related Links

- [Customer Journey: Danone](#)

### Groupe Danone

#### Speed

Allows rapid deployments to different business units around the world

#### Integration

Easy and secured integration with SAP backend systems

#### Rich

Provides variety of tools to design custom branded sites

# RuralCo: Serving the Customer Better by Quadrupling the Speed of Stocktaking



## RuralCo: Serving the Customer Better by Quadrupling the Speed of Stocktaking with SAP Cloud Platform

Find out how agribusiness retailing giant Ruralco developed an SAP Fiori Cloud app that makes stocktaking faster and more accurate so that its clerks can give customers highly reliable inventory information.



# NTUC FairPrice Co-Operative Gaining Agility from Real-Time Retailer-Supplier Collaboration



As Singapore's largest retailer, with half a million people relying on it each day, NTUC FairPrice Co-Operative needed an up-to-date solution to enhance and automate collaboration with its suppliers in order to meet customers' expectations and needs.

**Increased** Productivity and efficiency

**Better** Visibility of process and time to market

**Higher** Level of supplier satisfaction and effective collaboration



[Business Transformation Study: NTUC FairPrice Co-Operative](#)



# Adaptive Logistics



## Company

---

- Still is a leading supplier of forklift trucks, platform trucks and tractors plus the latest intra-logistics systems
- Situation: Still is evolving from a pure product company to a service company

## Process Innovation

---

- IoT connector is utilized to transfer real-time data from fleets to cloud
- Warehouse workers use smart mobile devices to allocate tasks to humans or machines in real-time
- A 3D visualization of the environment is used for truck orientation and positioning
- The truck directly receives warehouse tasks from SAP EWM

## Benefit

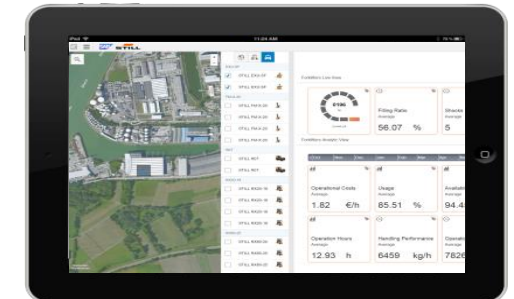
---

- Establish efficient, fast and safe logistics processes
- Reduce time effort for material handling
- Apply technology also for fleet management optimization


## Solution

---

- Still cubeXX concept forklift truck
- SAP Cloud Platform
- SAP Extended Warehouse Management (EWM)
- Mobile app for warehouse worker



# cbs Consignment Stock App for SAP Solutions

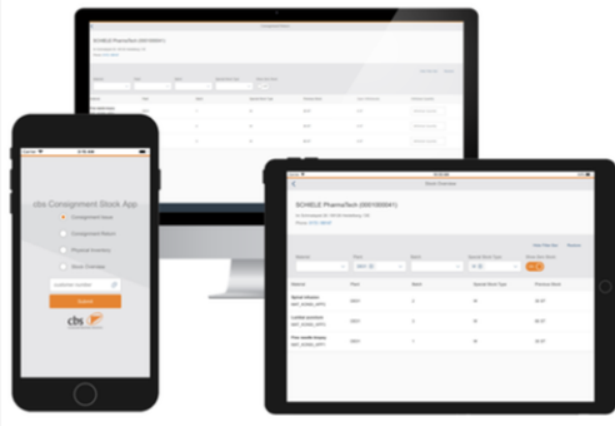


**cbs Consignment Stock App for SAP Solutions**  
Simple and easy consignment stock handling

[Overview](#)[Features](#)[Certifications](#)[Reviews](#)[Questions](#)[Resources](#)[Publisher](#)

## Simple and easy handling of consignment stock from anywhere and any device.

cbs Consignment Stock App for SAP Solutions enables a lean and easy handling of customer or vendor consignment stock from anywhere and any device. You can post consignment issues, consignment returns and inventory bookings and get a stock overview whether you use a S/4HANA on-Premise, S/4HANA Cloud or a SAP ERP system as backend.





[Contact Me](#)

### Editions & Pricing

## Side-by-side Extensibility

If the customer withdraws consignment stock for use or sale, you record this transaction in the system by creating a consignment issue. The app offers you the possibility to carry out a consignment withdrawal within a few steps - select the customer, enter the quantity and post - done.

Carrier

10:30 AM

64%

Consignment Issue

SCHIELE PharmaTech (0001000041)

Im Schmalspiel 26 / 69126 Heidelberg / DE  
 Phone: 0172 / 89147

Hide Filter Bar

Restore

Material:

Plant:

Batch:

Special Stock Type:

Show Zero Stock:

▼

DE01

⊗

▼

▼

▼

ON

Material	Plant	Batch	Special Stock Type	Previous Stock	Open Withdrawals	Withdrawal Quantity
<b>Spinal infusion</b> MAT_KONSI_APP2	DE01	2	W	30 ST	8 ST	<div>Withdra...</div>
<b>Lumbar puncture</b> MAT_KONSI_APP3	DE01	3	W	66 ST	8 ST	<div>Withdra...</div>
<b>Fine needle biopsy</b> MAT_KONSI_APP1	DE01	1	W	35 ST	8 ST	<div>Withdra...</div>


Submit

Cancel

Wolfgang

cbs Consignment Stock A x

Secure | https://www.sapappcenter.com/apps/24394/cbs-consignment-stock-app-for-sap-solutions#!fea...

 **cbs Consignment Stock App for SAP Solutions**  
Simple and easy consignment stock handling

Contact Me

OverviewFeaturesCertificationsReviewsQuestionsResourcesPublisherEditions & Pricing

Consignment Issue

Consignment Return

Inventory Bookings

Stock Overview

Side-by-side Extensibility

## Consignment Return

Consignment returns allow your customer to take back goods previously withdrawn from consignment stock. If the customer wants to reverse a previous issue, record this transaction by creating a consignment return. You can use this app to store consignment returns in the system within a few steps.

Carrier 10:32 AM 64%

Consignment Return

SCHIELE PharmaTech (0001000041)  
Im Schmalsspiel 26 / 69126 Heidelberg / DE  
Phone: 0172 / 89147

Show Filter Bar Restore

Material	Plant	Batch	Special Stock Type	Previous Stock	Open Withdrawals	Withdrawl Quantity
Spinal infusion MAT_KONSI_APP2	DE01	2	W	30 ST	8 ST	<div>Withdra...</div>
Lumbar puncture MAT_KONSI_APP3	DE01	3	W	66 ST	8 ST	<div>Withdra...</div>
Fine needle biopsy MAT_KONSI_APP1	DE01	1	W	35 ST	8 ST	<div>Withdra...</div>

SubmitCancel


© 2018 SAP SE or an SAP affi

17

Wolfgang

cbs Consignment Stock A x

Secure | https://www.sapappcenter.com/apps/24394/cbs-consignment-stock-app-for-sap-solutions#!fea...

 **cbs Consignment Stock App for SAP Solutions**  
Simple and easy consignment stock handling

Contact Me

OverviewFeaturesCertificationsReviewsQuestionsResourcesPublisherEditions & Pricing

Consignment Issue

Consignment Return

Inventory Bookings

Stock Overview

Side-by-side Extensibility

## Inventory Bookings

In the entire inventory posting process, you must execute three transactions within SAP: (a) Create physical inventory documents; (b) Enter a physical inventory count; (c) Post inventory differences. Perform the entire inventory process within a few clicks.

Carrier 10:32 AM 64%

Physical Inventory

SCHIELE PharmaTech (0001000041)  
Im Schmalspiel 26 / 69126 Heidelberg / DE  
Phone: 0172 / 89147

Show Filter Bar Restore


Material	Plant	Batch	Special Stock Type	Previous Stock	New Stock
Spinal infusion MAT_KONSI_APP2	DE01	2	W	30 ST	<input type="text" value="New Stock"/>
Lumbar puncture MAT_KONSI_APP3	DE01	3	W	66 ST	<input type="text" value="New Stock"/>
Fine needle biopsy MAT_KONSI_APP1	DE01	1	W	35 ST	<input type="text" value="New Stock"/>

SubmitCancel

Wolfgang

cbs Consignment Stock A x

Secure | https://www.sapappcenter.com/apps/24394/cbs-consignment-stock-app-for-sap-solutions#!fea...

 **cbs Consignment Stock App for SAP Solutions**  
Simple and easy consignment stock handling

Contact Me

OverviewFeaturesCertificationsReviewsQuestionsResourcesPublisherEditions & Pricing

Consignment Issue

Consignment Return

Inventory Bookings

Stock Overview

Side-by-side Extensibility

## Stock Overview

The app provides a simple overview of your current consignment stocks.

Carrier10:33 AM64%

Stock Overview

SCHIELE PharmaTech (0001000041)  
Im Schmalspiel 26 / 69126 Heidelberg / DE  
Phone: 0172 / 89147

Hide Filter BarRestore

Material:Plant:Batch:Special Stock Type:Show Zero Stock:

DE01

W

ON

Material	Plant	Batch	Special Stock Type	Previous Stock
Spinal infusion MAT_KONSI_APP2	DE01	2	W	30 ST
Lumbar puncture MAT_KONSI_APP3	DE01	3	W	66 ST
Fine needle biopsy MAT_KONSI_APP1	DE01	1	W	35 ST

© 2018 SAP SE or an SAP affi

19

# Improve Customer Insights, Fraud Detection and Regulatory Reporting

Consolidate your detailed customer data in the cloud addressing diverse business issues



**Situation:** The Bank wants to leverage 20 years of data, they have about a customer on various systems to get better insights for customer care and sales, for fraud detection and last not least for more robust regulatory reporting.

**Challenges:** A very diverse landscape difficult to extend; No easy access to required big data skills (Cluster HW, networking, big data operations); Little cloud experience, including regulatory requirements

## **Solution:** Create a 'full history' storage in the cloud

using a SAP Cloud Platform Big Data Services, 40 T Hadoop-spark fully managed as a service enterprise edition

- SAP Vora hosted in Big Data Services Edge nodes/workbench
- Hadoop Tenant ready for use 2 days after signing the contract
- Regulatory issues addressed and resolved with customer and national regulator
- Partner enabled to address data consolidation and cleansing as well as analytics

## **Benefits**

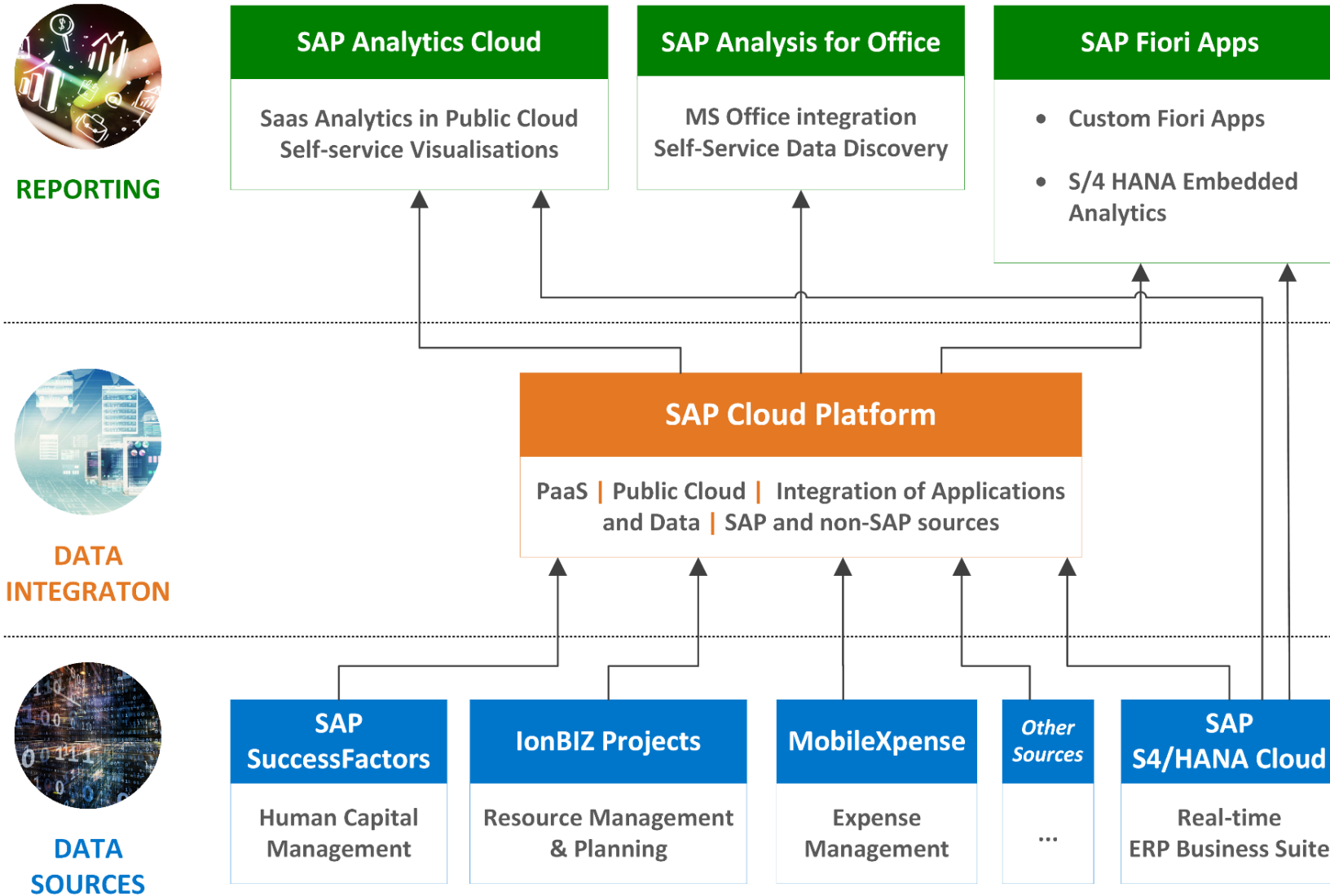
**Time to operations:** Big Data Tenant available 2 days after signing the contract

**Robustness:** Stable environment to consolidate arbitrary data sources in a single place

**Future ready:** Set the path for improved customer relationship, improved fraud detection and robust but flexible reporting

## **Customer Example:**





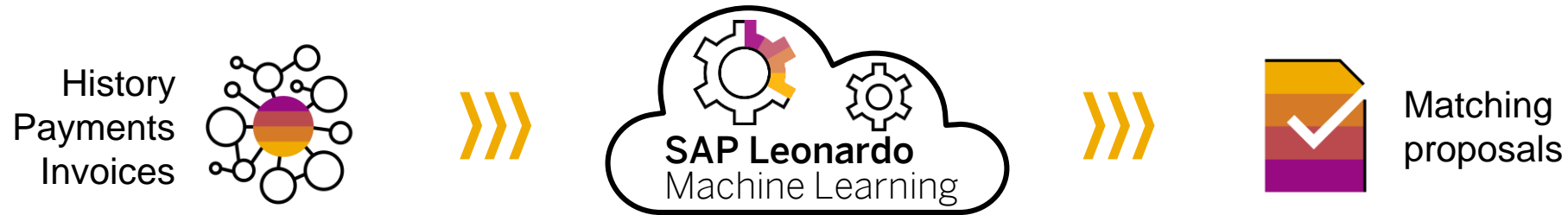
# Example SAP Cash Application

Automatically match payments to open customer invoices

**SAP Cash Application** automatically matches incoming payments with open receivables. It boosts efficiency of the traditionally very labor-intensive clearing process, being executed with nearly no user interaction. The application takes advantage of machine learning to enable an effortless setup and to increase automatic matching rates.

## Business Benefits

- Automatically learns from accountants' actions and applies it to future payments
- Enables substantial reduction of labor cost per invoice and faster clearing
- Automation shifts effort towards better service quality



SAP Cash Application intelligently learns matching criteria from your history and automatically clears payments.



Improves days sales outstanding



Integrated with SAP S/4HANA for reduced TCO and time to value

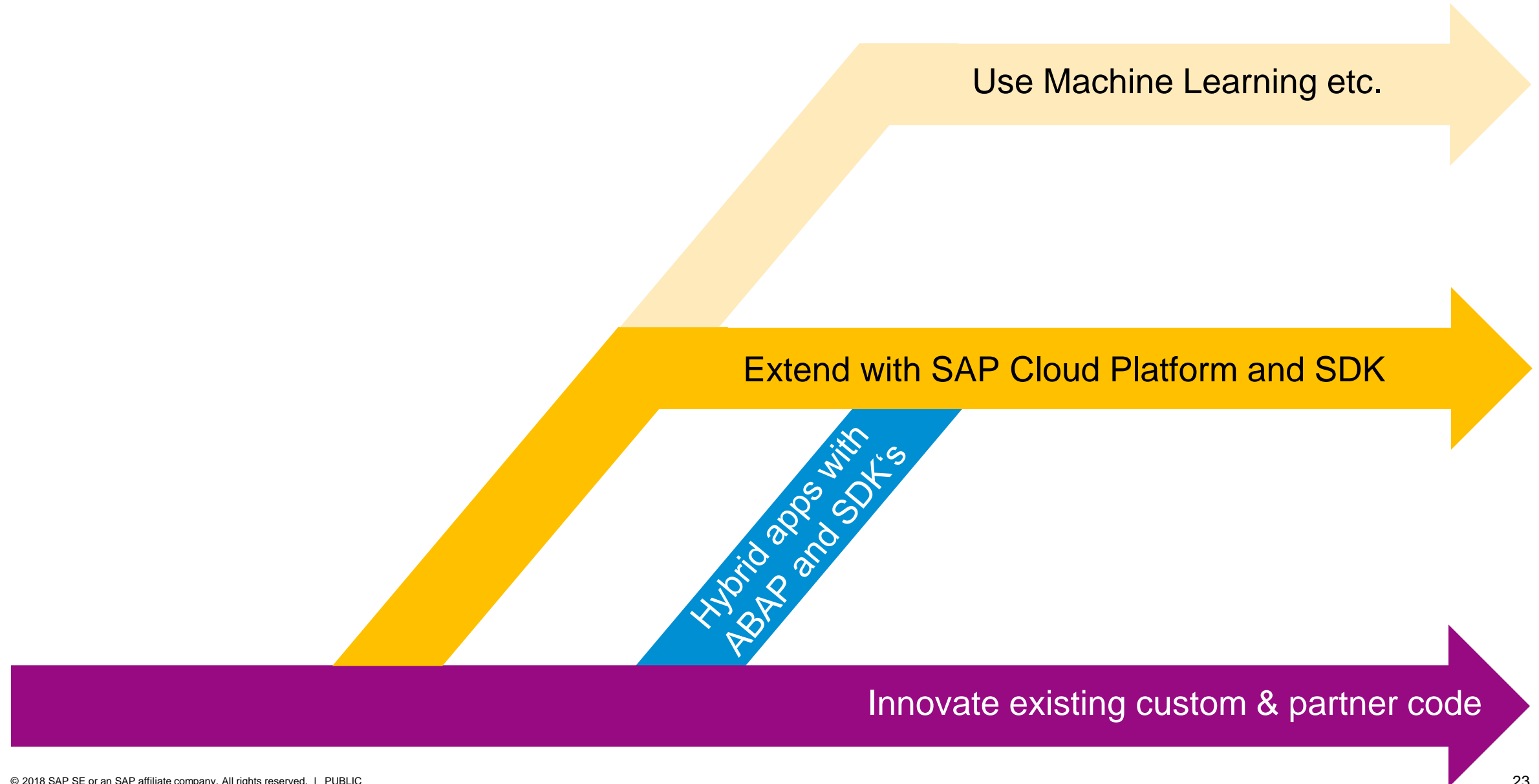


Allows shared services to scale as the business grows



Empowers finance to focus on strategic tasks and service quality

# How customers use transition to SAP S/4HANA and SAP Cloud Platform



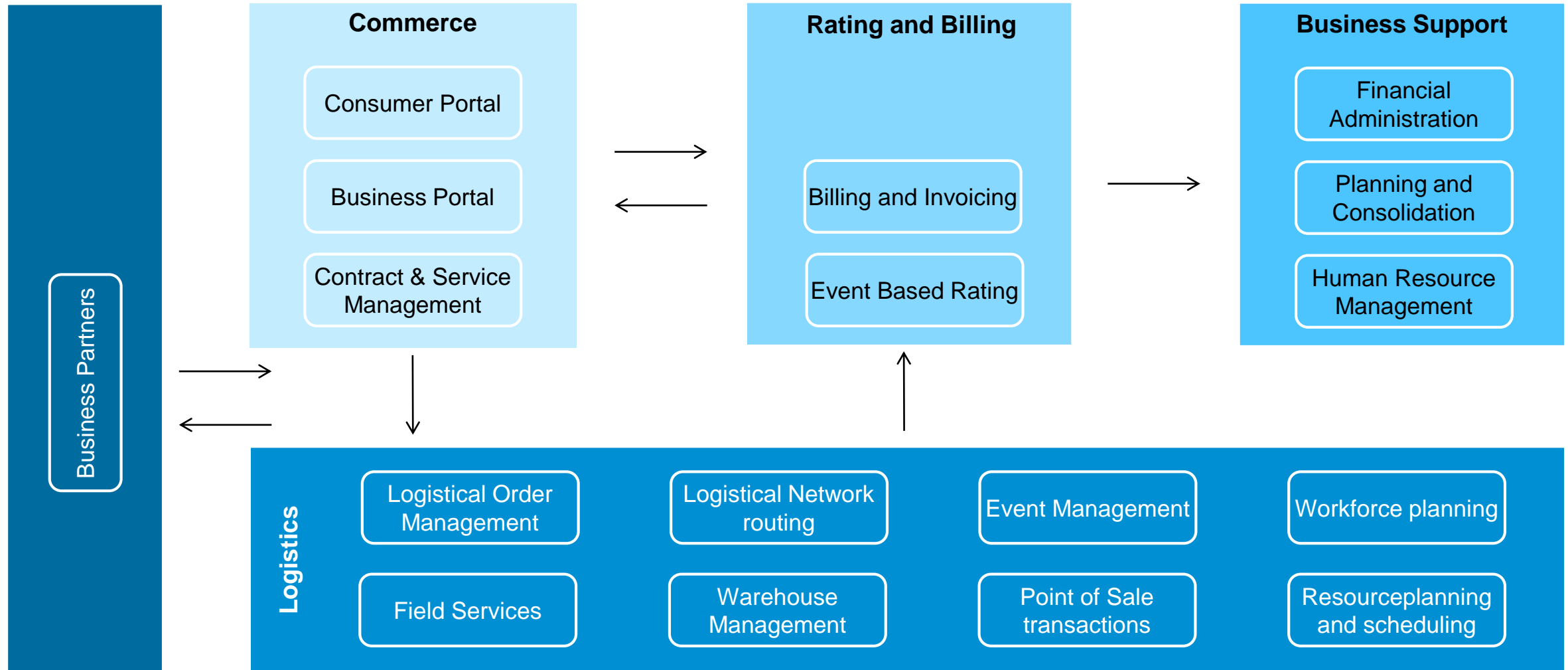
**Integrate Apps, Data and Processes**



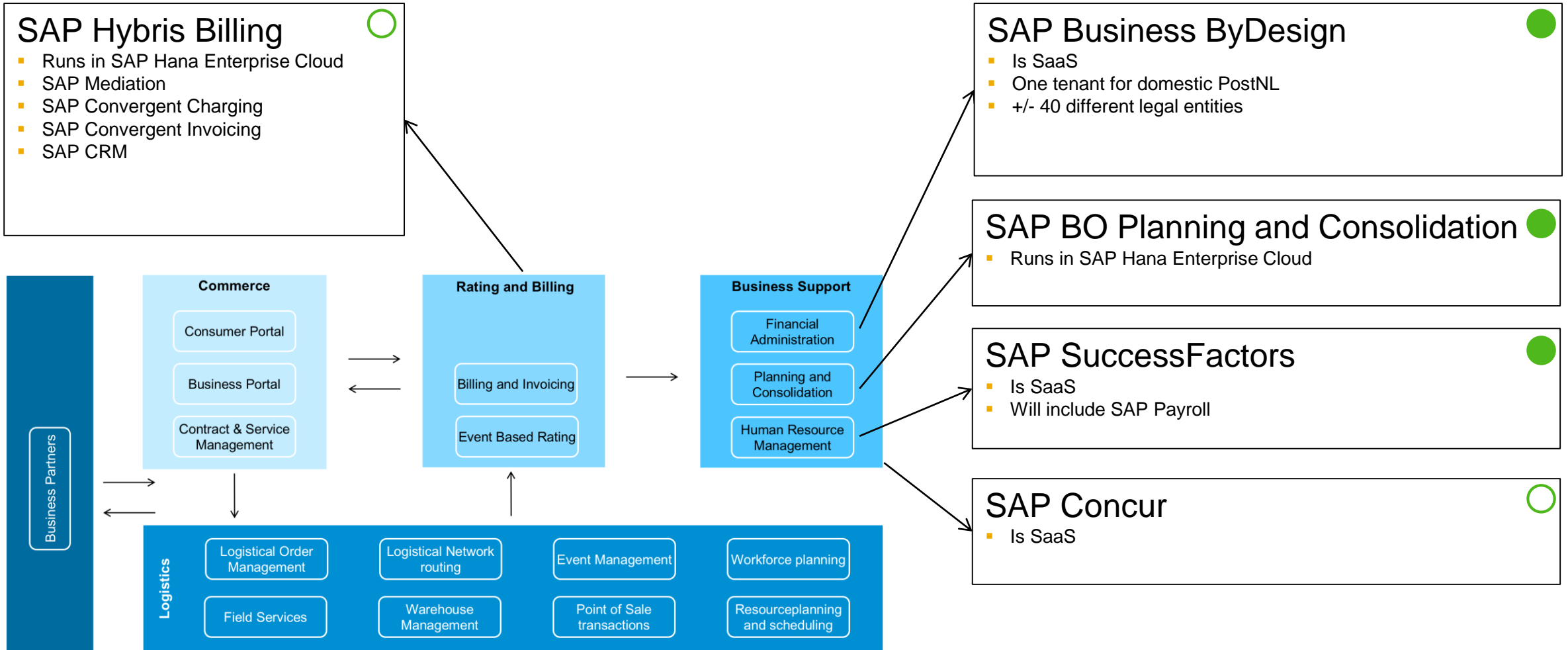
  
**postnl**



# A high level process view of the PostNL landscape



# SAP Business Solutions support Rating, Billing, Finance and HR







# Optimize your IT Landscape with SAP Cloud Platform



## Integrate SAP and non-SAP Solutions with prepackaged integrations



### SAP ↔ SAP examples

- SAP SuccessFactors**  Replicate employee master data from SAP SuccessFactors Employee Central ERP
- SAP Ariba**  Ariba Network to SAP Business Suite: Purchase Order & Invoice Automation for SAP ERP MM, and SRM
- SAP Hybris**  C4C Integration with SAP MRS add-on for ERP
- CONCUR**  Integrate and automate operations of Concur Expense with your ERP or SAP S/4HANA Cloud

### SAP ↔ non-SAP examples

-  Analyze social media posts in the sentiment engagement app in SAP S/4HANA Marketing Cloud
-  Display pricing conditions, discounts and offers

### La Trobe University

#### Creating a Future-Ready Environment with SAP Solutions



#### La Trobe University

**10%**

Reduction in workload for employees expected after implementation

**Reduced**

Time required to create reports or aggregate data

**Improved**

Functionality of SAP solutions

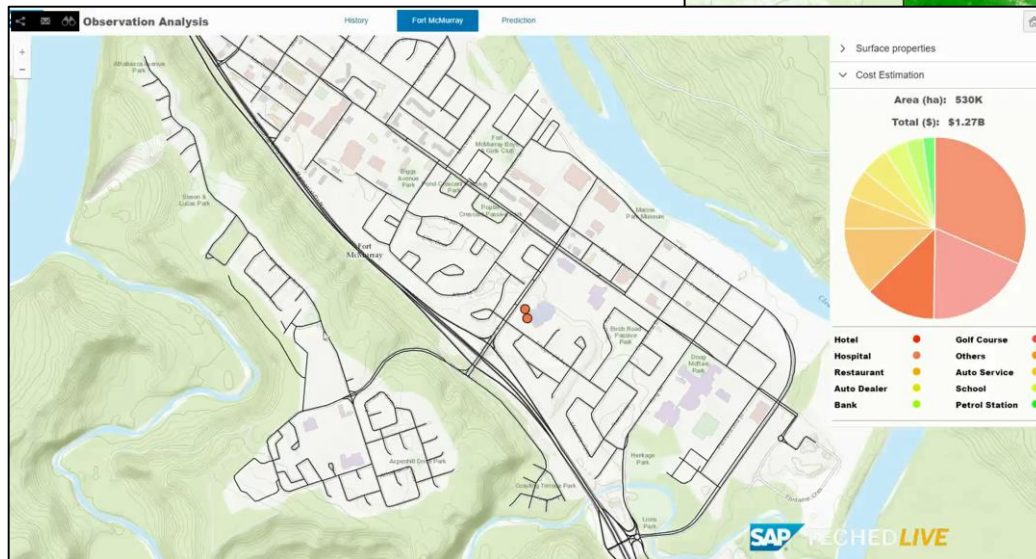
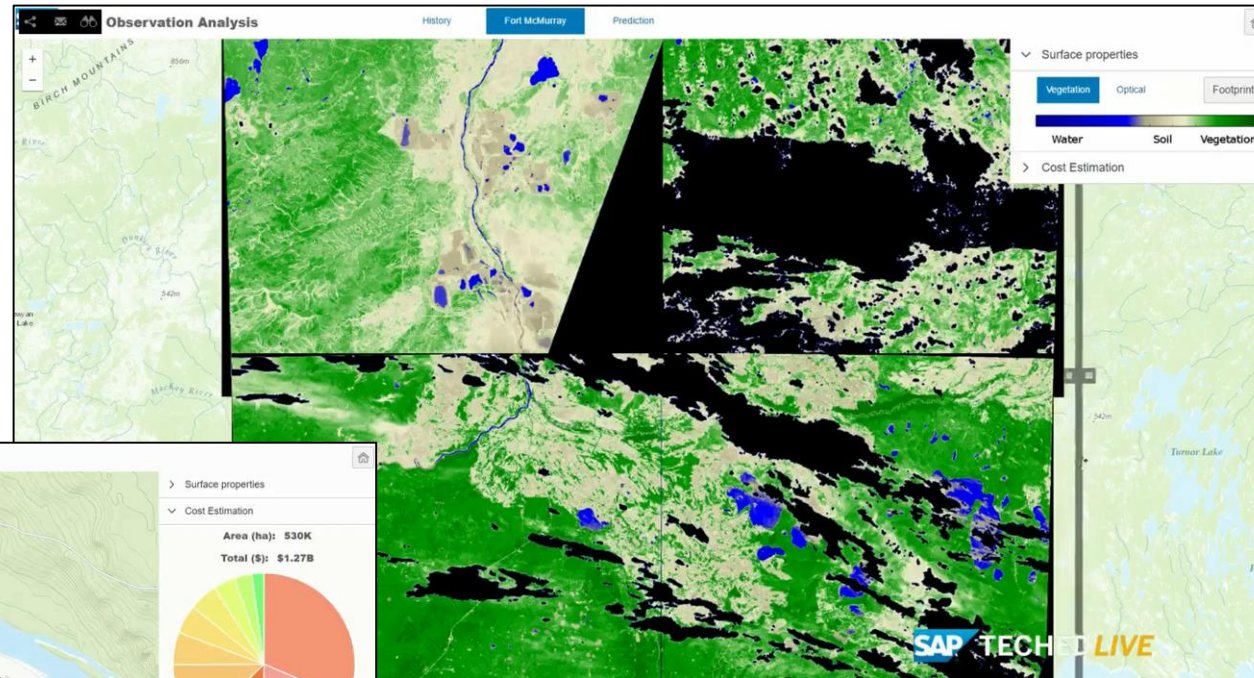
La Trobe University turned to SAP solutions to set it apart. The Global Service & Support organization played a role in a number of different areas, from architecture to design, testing, and implementation. The University deployed a range of SAP solutions and was part of the SAP Early Adopter Care program for SAP Cloud Platform Integration.

"In working with SAP S/4HANA Finance, SAP SuccessFactors Employee Central, and SAP HANA Cloud Integration, it's all about contributing to our future-ready strategy. We are simplifying the way that technology is used, reducing paper-based processes, and creating time for our end users."

*Peter Nikolettatos, Executive Director and Chief Information Officer, La Trobe University*

**Build Differentiating Digital Apps**

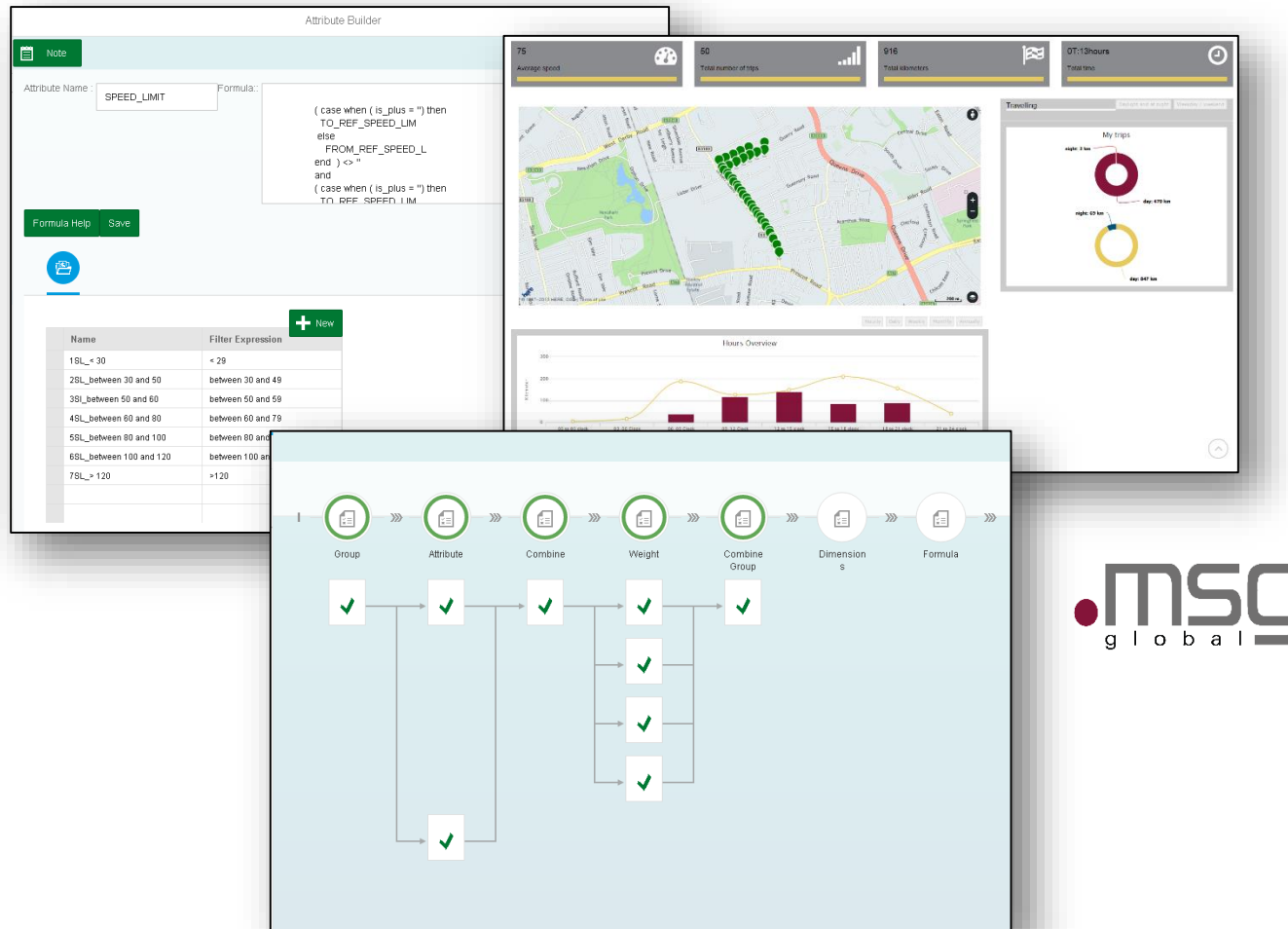
# Munich Re Satellite data takes digital businesses to new heights



- In close partnership with the European Space Agency (ESA), SAP is combining SAP Cloud Platform with ESA's accurate and timely Earth observation information, in particular Copernicus data.
- Munich Re showcases its use of the “Earth Observation Analysis Service” powered by SAP Cloud Platform for gaining insights and predicting potential future impact from historic and current data.

# msg IoT Analyzer based on SAP Cloud Platform

## Uplift your inhouse telematics scoring capabilities



## Key Benefits

Allows insurers to **tailor scoring models** to their policyholders & making the calculation of scores **completely transparent**

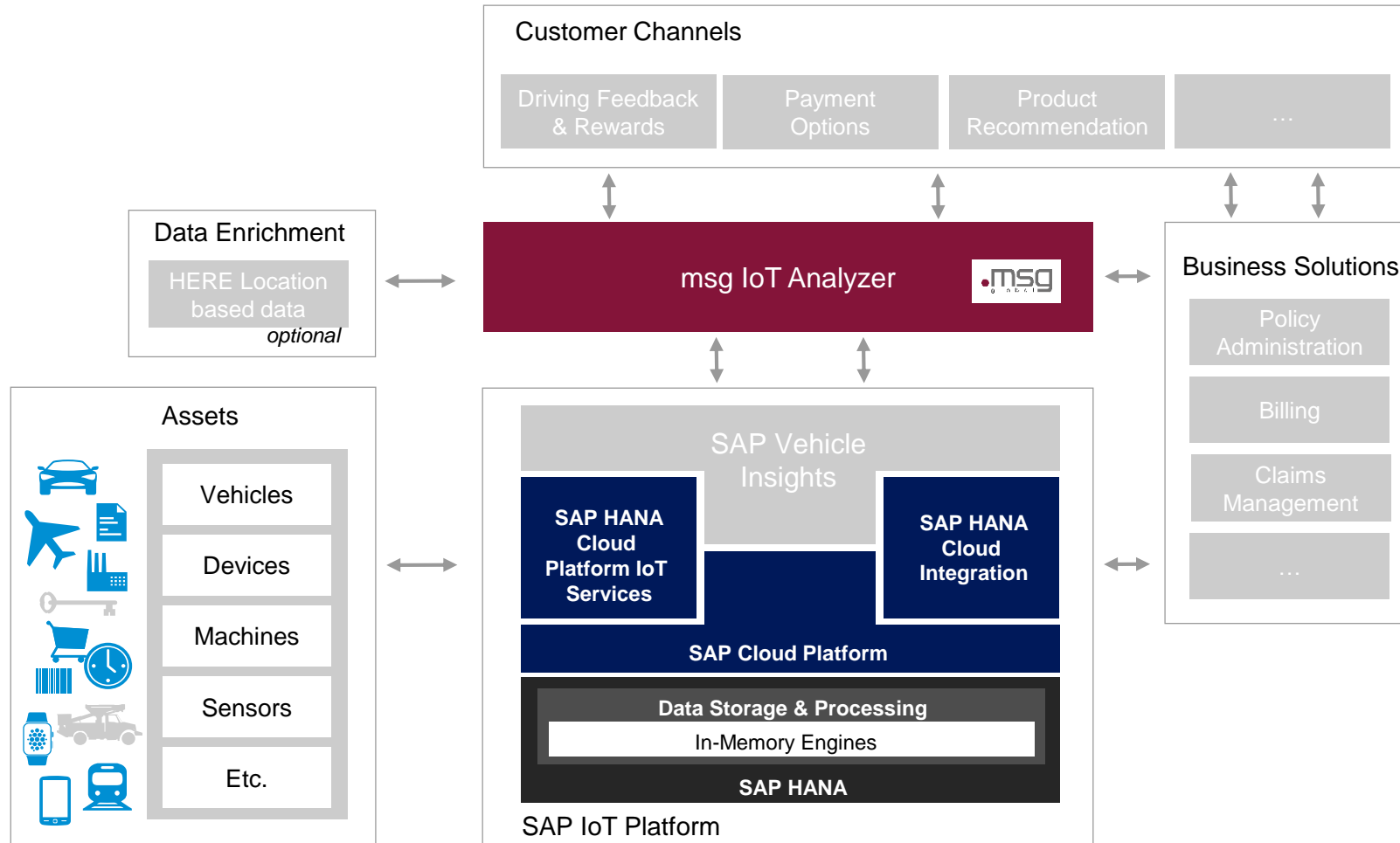
Create **company specific** scoring model based on **all data**

Add **additional** calculations, statistics, report **on your own** without further negotiation with your service provider

**In-house** risk model definition, score calculation and deep analytics

Support **your Actuaries** with comprehensive workplace

# Insurance Connected Car: Usage-Based Insurance Solution in Concert - an Architectural View



## Key Points

**Based on** SAP's in-memory platform for advanced data processing: **SAP HANA**

Full access to all sensor & calculated data via **oData service layer**

**Flexible, Broad & Extensible data model** (thing model)

**Easy to connect** to SAP and non-SAP Solutions

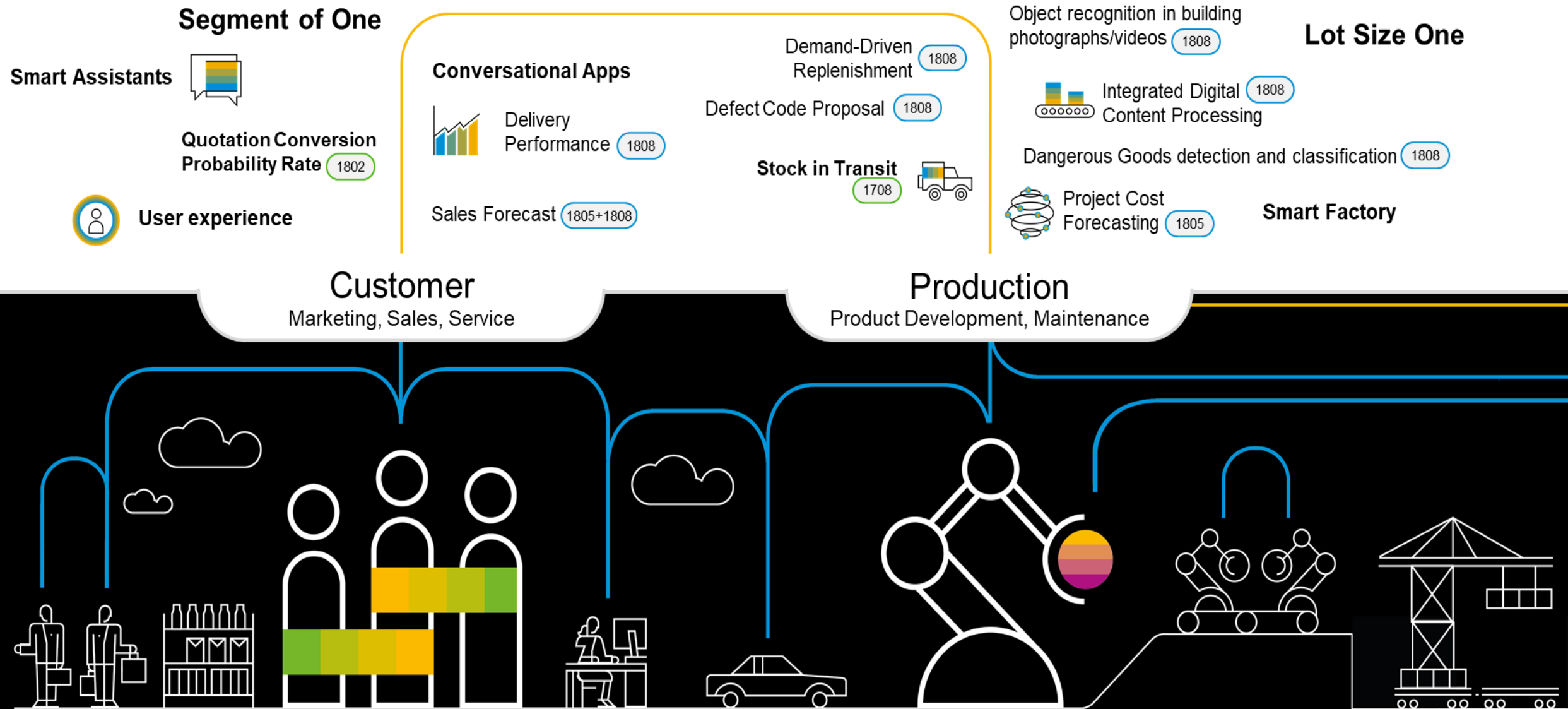
**Easy to enhance** for other assets beside vehicles

Foundation to realize a variety of scenarios and **support new uses cases and business models**

[IoT Analyzer at the SAP APP Center](#)



# SAP S/4HANA Cloud **hyper-automated** via SAP Leonardo machine learning intelligence





## Data-Driven Logistics

1805

Optimized Purchase Requisition Processing:  
Propose Creation of RFQs

Propose material group 1805

## Digital Assistants

Contract Consumption 1705

Propose Creation of New Catalog Item 1805

Payment Block / 1805  
Cash Discount at Risk

1805 Smart Alerts for Profit & Loss Analysis

Detect Abnormal Liquidity Items 1808

1802 Payment Advice Extractor

Cash Application,  
Line Item Matching 1705  
Lockbox 1805



SAP Tax Compliance Smart Automation GRC 1.2 SP06

SAP RealSpend Cost Center Analysis 1808

GRC 1.2 SP08 Business Integrity Screening

Goods Receipt / Invoice Receipt Monitor 1805



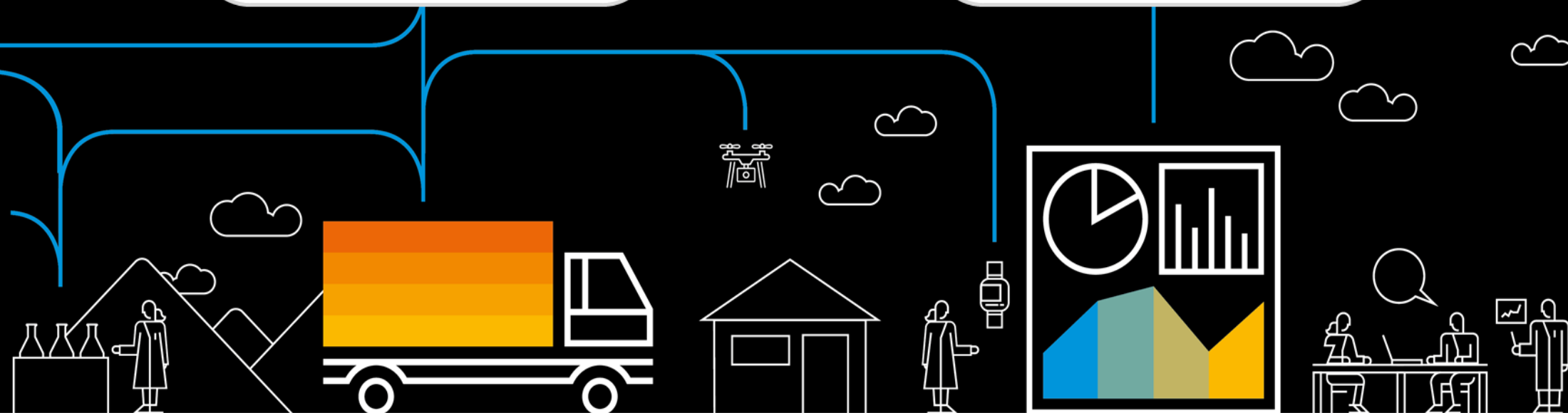
Intelligent Enterprise

## Supply Chain

Procurement, Infrastructure

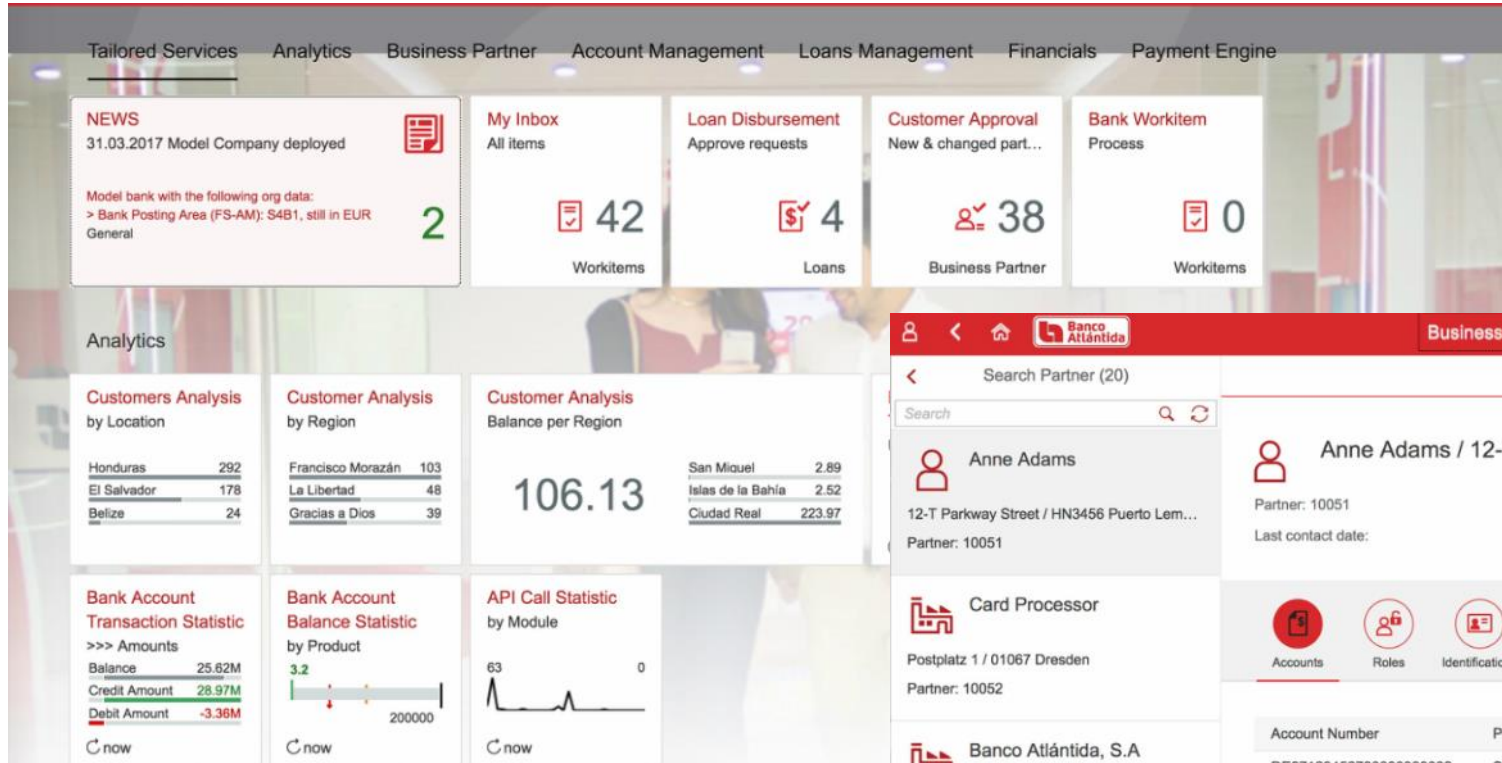
## Finance

Business Mgmt., Security, Compliance



**Connect People and Data**

# Banking UIs – Tailored UIs Managed in the cloud



[How to Build UX using WebIDE & API Hub \(Video\)](#)

**Business Partner Overview**

Search Partner (20)

Search

**Anne Adams**  
12-T Parkway Street / HN3456 Puerto Lem...  
Partner: 10051  
Status: Active  
Rating: 3 (silver)

**Card Processor**  
Postplatz 1 / 01067 Dresden  
Partner: 10052

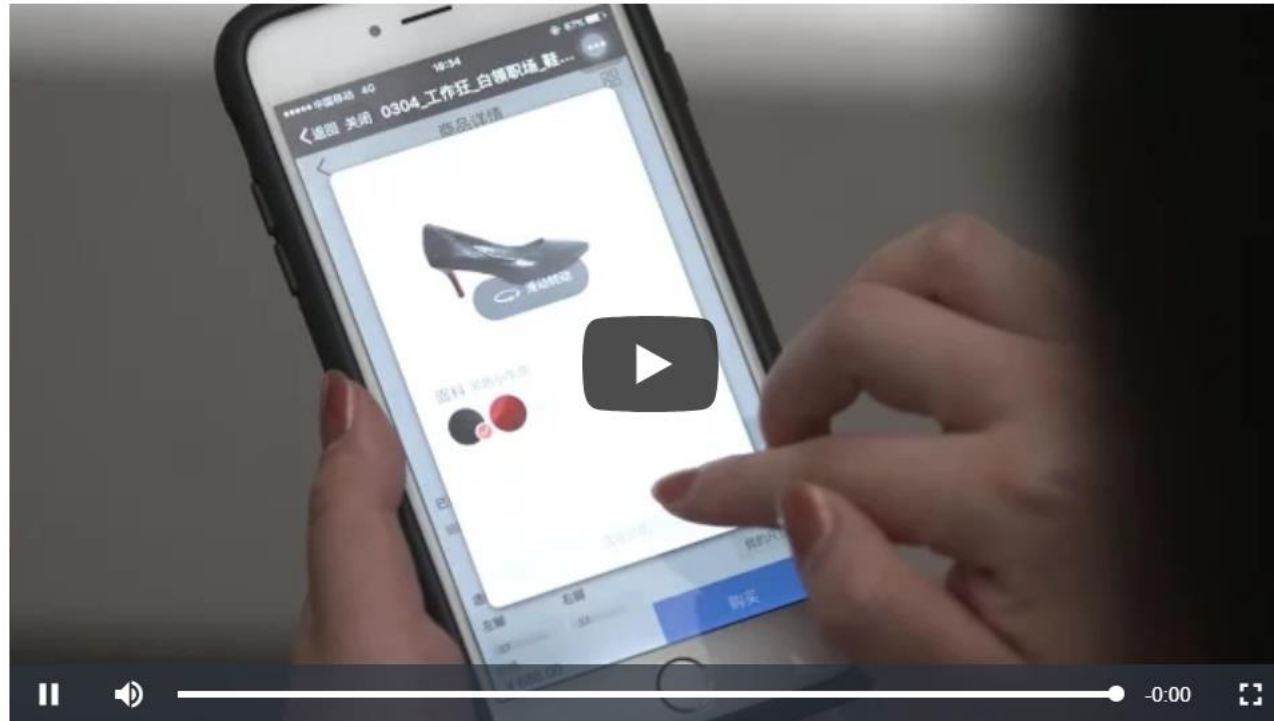
**Banco Atlántida, S.A**  
25 Plz. Bancatlán, Blvd. Miraflores / FM316...  
Partner: 10053

**Max Mustermann**  
1 Postplatz / HN3456 Los Angeles  
Partner: 10061

**Mr. Heinzkarl Thomann**

Account Number	Product	Balance	Available Amount
DE87123456780000000002	S4B Clearing Card Account	11,920.08 EUR	12,920.08 EUR>
DE60123456780000000003	S4B Fixed Time Deposit with maximal Functionality	0.00 EUR	0.00 EUR>
DE06123456780000000005	S4B Giro with maximal Functionality	19,690.87 EUR	20,890.87 EUR>
DE76123456780000000006	S4B Internal Account with maximal Functionality	8,000.00 EUR	8,000.00 EUR>
DE49123456780000000007	S4B Saving Account with maximal Functionality	0.00 EUR	0.00 EUR>
DE92123456780000000009	S4B Saving Account with maximal Functionality	4,796.19 EUR	4,796.19 EUR>
DE65123456780000000010	S4B Clearing Card Account	11,920.08 EUR	12,920.08 EUR>
DE70123456780000001375	S4B Fixed Time Deposit with maximal Functionality	5,800.00 EUR	5,800.00 EUR>
DE05123456780000001381	S4B Saving Scheme with maximal Functionality	0.00 EUR	0.00 EUR>

# Shoe Shopping going digital with SAP Cloud Platform



## Shoe Shopping is Going Digital with Aimickey Shoe Company

Everyone can now design their own pair of shoes and have it produced within a week. Sounds like science fiction – not in Chengdu, China. A unique co-innovation project of SAP and Aimickey Shoe Company uses SAP Connected Products, based on the SAP Cloud Platform and SAP Leonardo Machine Learning, to take shoe design and production to the next level.



## Truck Drivers

Avoiding wasting time in planet  
to fill the truck and get out of  
the truck



## Customers

Receiving goods more timely  
and being happy

# TM Driver App



- within 25 miles check-in
- Trailer ID
- Freight numbers

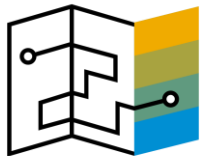
## Shipping Clerks

Being able to quickly find the  
order and provide accurate  
information



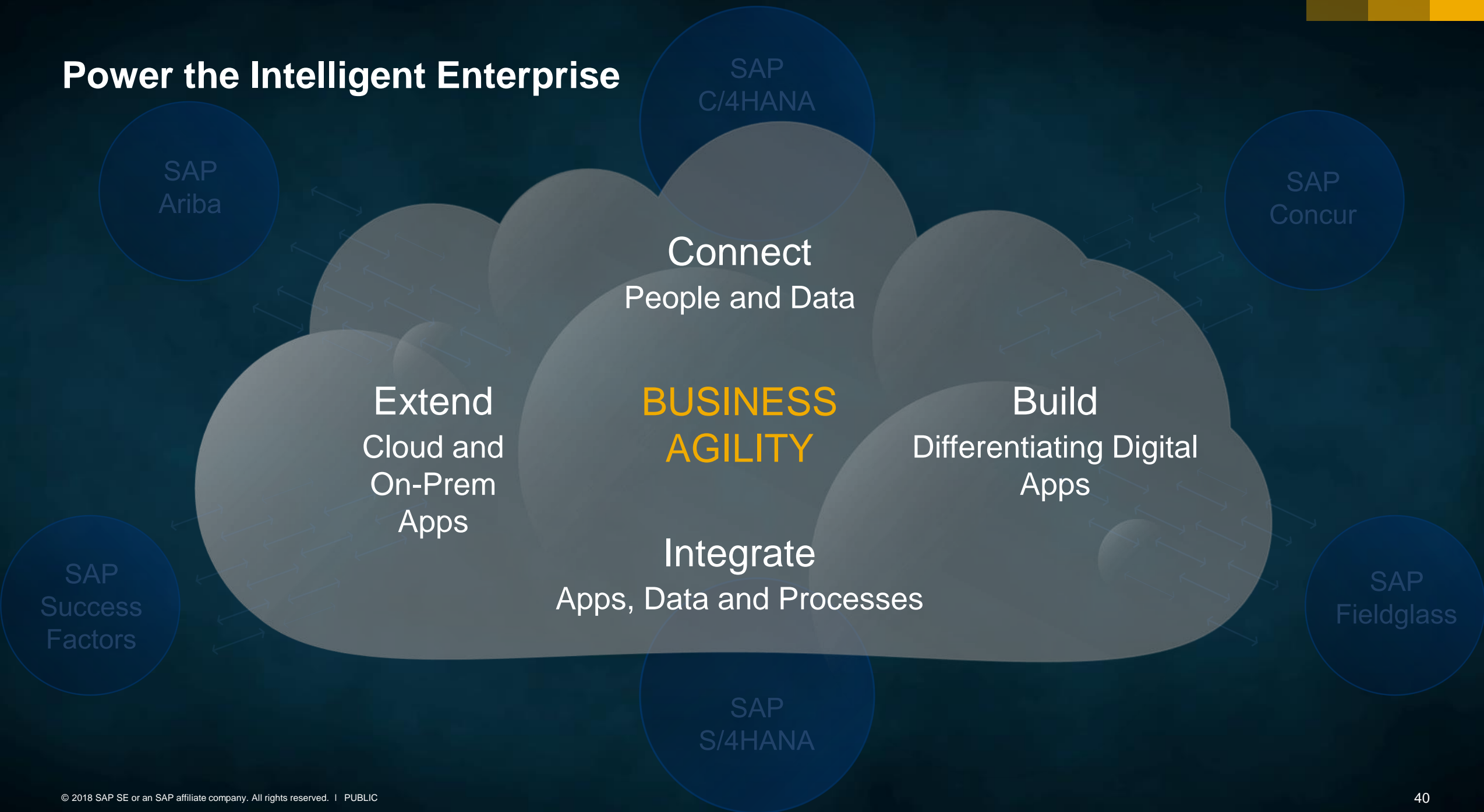
## Safety Concerns

No need to leave the trucks  
Integration with apple maps and allow  
them to get point to point



# Summary

# Power the Intelligent Enterprise



# Thank you.

Contact information:

**Dr. Wolfgang Weiss**

Product Management SAP Cloud Platform

[wolfgang.weiss@sap.com](mailto:wolfgang.weiss@sap.com)

Follow us



[www.sap.com/contactsap](http://www.sap.com/contactsap)

© 2018 SAP SE or an SAP affiliate company. All rights reserved.

No part of this publication may be reproduced or transmitted in any form or for any purpose without the express permission of SAP SE or an SAP affiliate company.

The information contained herein may be changed without prior notice. Some software products marketed by SAP SE and its distributors contain proprietary software components of other software vendors. National product specifications may vary.

These materials are provided by SAP SE or an SAP affiliate company for informational purposes only, without representation or warranty of any kind, and SAP or its affiliated companies shall not be liable for errors or omissions with respect to the materials. The only warranties for SAP or SAP affiliate company products and services are those that are set forth in the express warranty statements accompanying such products and services, if any. Nothing herein should be construed as constituting an additional warranty.

In particular, SAP SE or its affiliated companies have no obligation to pursue any course of business outlined in this document or any related presentation, or to develop or release any functionality mentioned therein. This document, or any related presentation, and SAP SE's or its affiliated companies' strategy and possible future developments, products, and/or platforms, directions, and functionality are all subject to change and may be changed by SAP SE or its affiliated companies at any time for any reason without notice. The information in this document is not a commitment, promise, or legal obligation to deliver any material, code, or functionality. All forward-looking statements are subject to various risks and uncertainties that could cause actual results to differ materially from expectations. Readers are cautioned not to place undue reliance on these forward-looking statements, and they should not be relied upon in making purchasing decisions.

SAP and other SAP products and services mentioned herein as well as their respective logos are trademarks or registered trademarks of SAP SE (or an SAP affiliate company) in Germany and other countries. All other product and service names mentioned are the trademarks of their respective companies.

See [www.sap.com/corporate-en/legal/copyright/index.epx](http://www.sap.com/corporate-en/legal/copyright/index.epx) for additional trademark information and notices.