



# **SAP BTP Webinar**

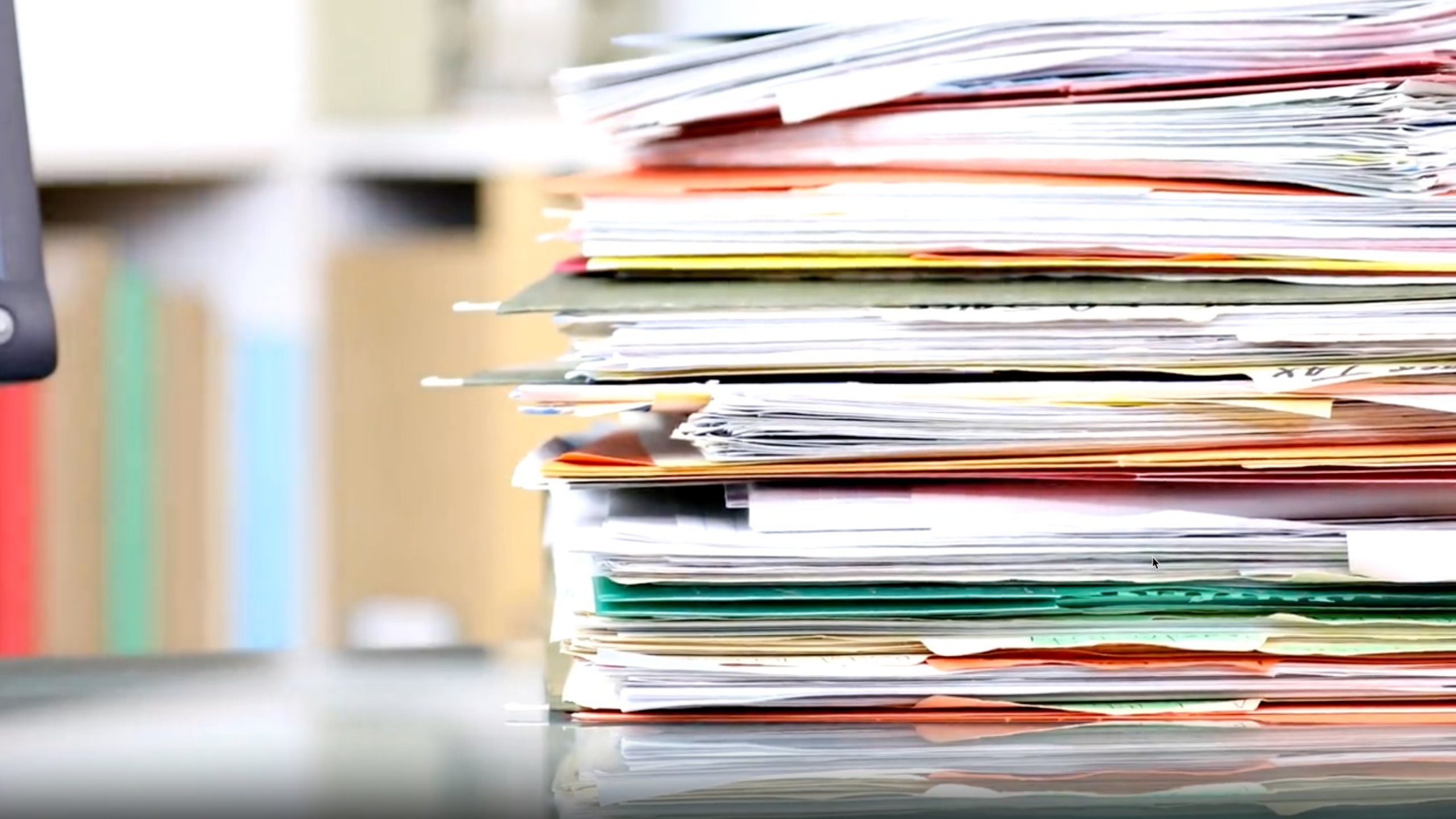
## **Boost Operational Efficiency with SAP AI Business Services – A focus on Document Information Extraction**

# Disclaimer

The information in this presentation is confidential and proprietary to SAP and may not be disclosed without the permission of SAP. Except for your obligation to protect confidential information, this presentation is not subject to your license agreement or any other service or subscription agreement with SAP. SAP has no obligation to pursue any course of business outlined in this presentation or any related document, or to develop or release any functionality mentioned therein.

This presentation, or any related document and SAP's strategy and possible future developments, products and or platforms directions and functionality are all subject to change and may be changed by SAP at any time for any reason without notice. The information in this presentation is not a commitment, promise or legal obligation to deliver any material, code or functionality. This presentation is provided without a warranty of any kind, either express or implied, including but not limited to, the implied warranties of merchantability, fitness for a particular purpose, or non-infringement. This presentation is for informational purposes and may not be incorporated into a contract. SAP assumes no responsibility for errors or omissions in this presentation, except if such damages were caused by SAP's intentional or gross negligence.

All forward-looking statements are subject to various risks and uncertainties that could cause actual results to differ materially from expectations. Readers are cautioned not to place undue reliance on these forward-looking statements, which speak only as of their dates, and they should not be relied upon in making purchasing decisions.









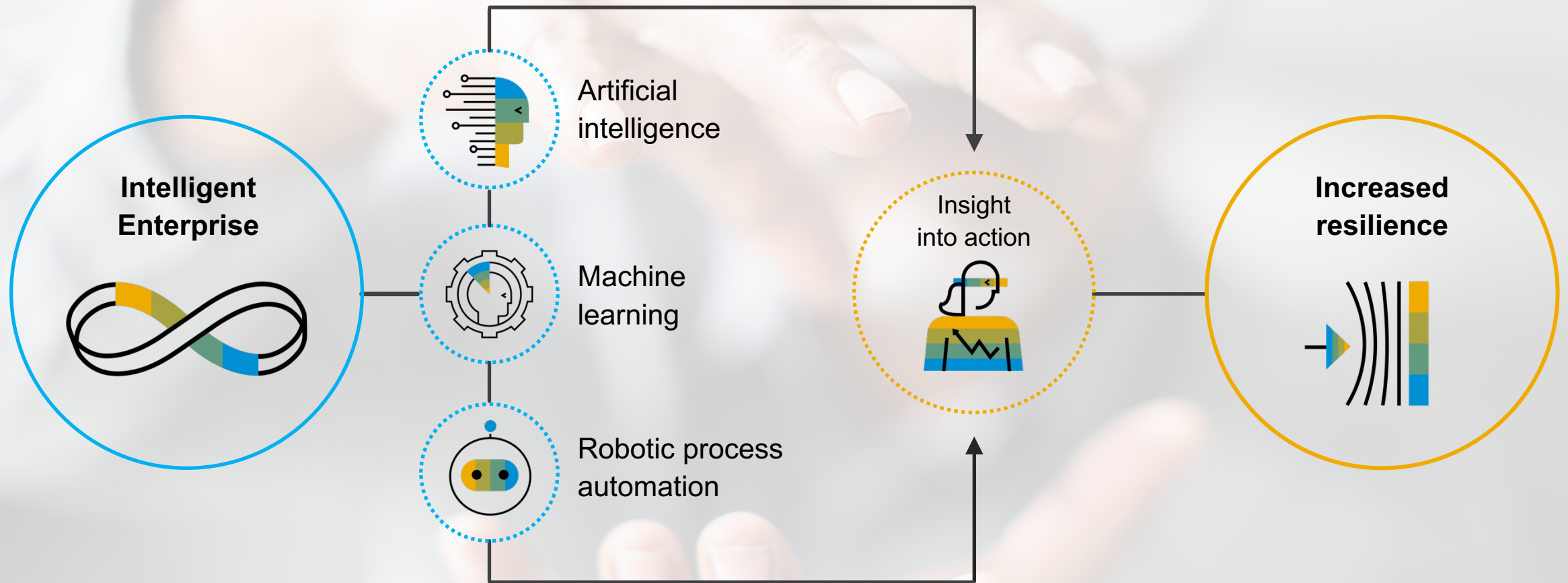


**62%** of accounts payable costs come from **labor**.

Source: APQC, 2015 "[AP Process Cost Per Invoice Processed](#)"



# Innovative Technologies Support Business Resilience



# SAP Business AI approach

Relevant. Reliable. Responsible.

Finance | Supply Chain | HR | Procurement | Marketing and Commerce | Sales and Services | IT



**Joule**

A copilot that truly understands your business

## Embedded AI capabilities

Cloud ERP

Human capital  
management

Spend management  
and business network

Customer relationship  
management

Business Technology  
Platform

## AI Foundation

on Business Technology Platform

## AI ecosystem partnerships and investments



ALEPH ALPHA

ANTHROPIC



cohere

databricks

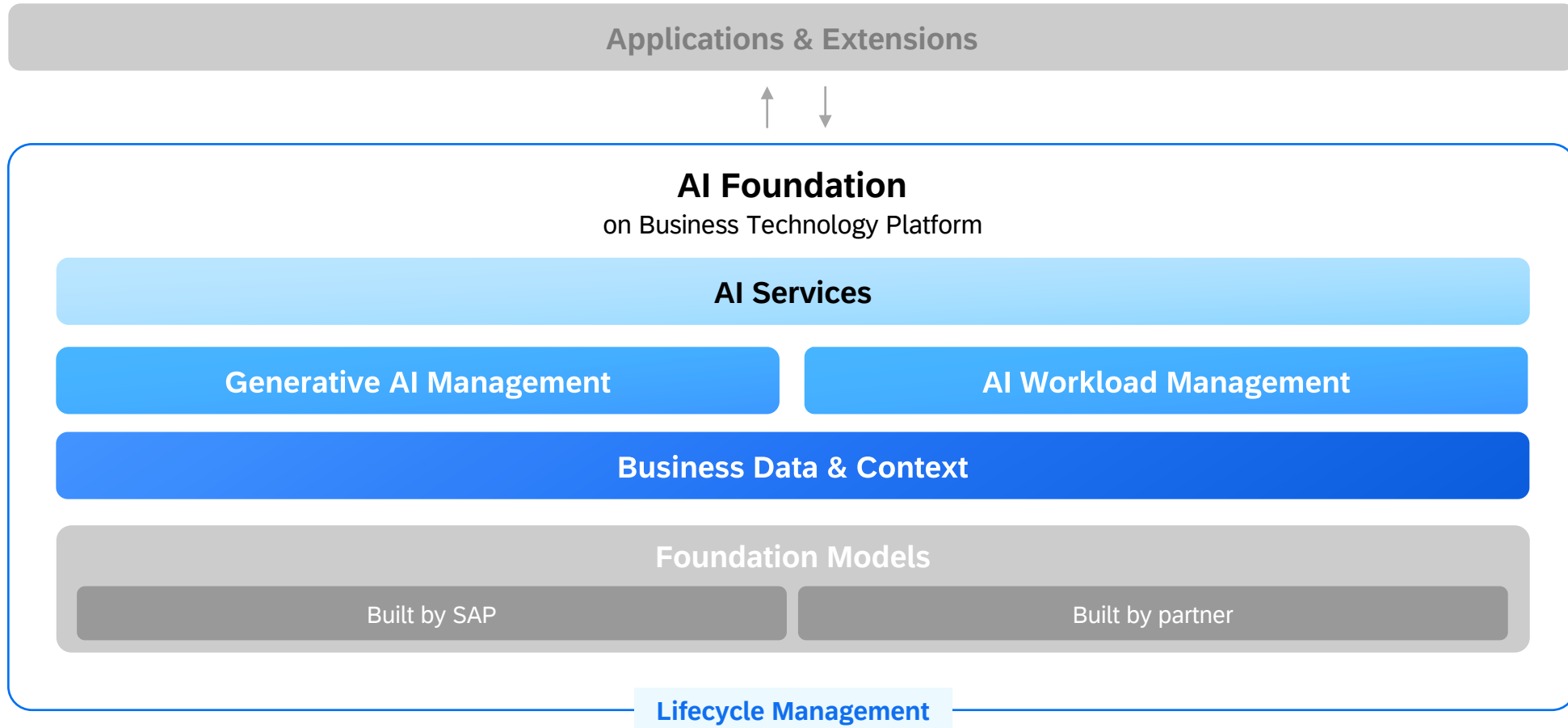
DataRobot

Google Cloud

IBM

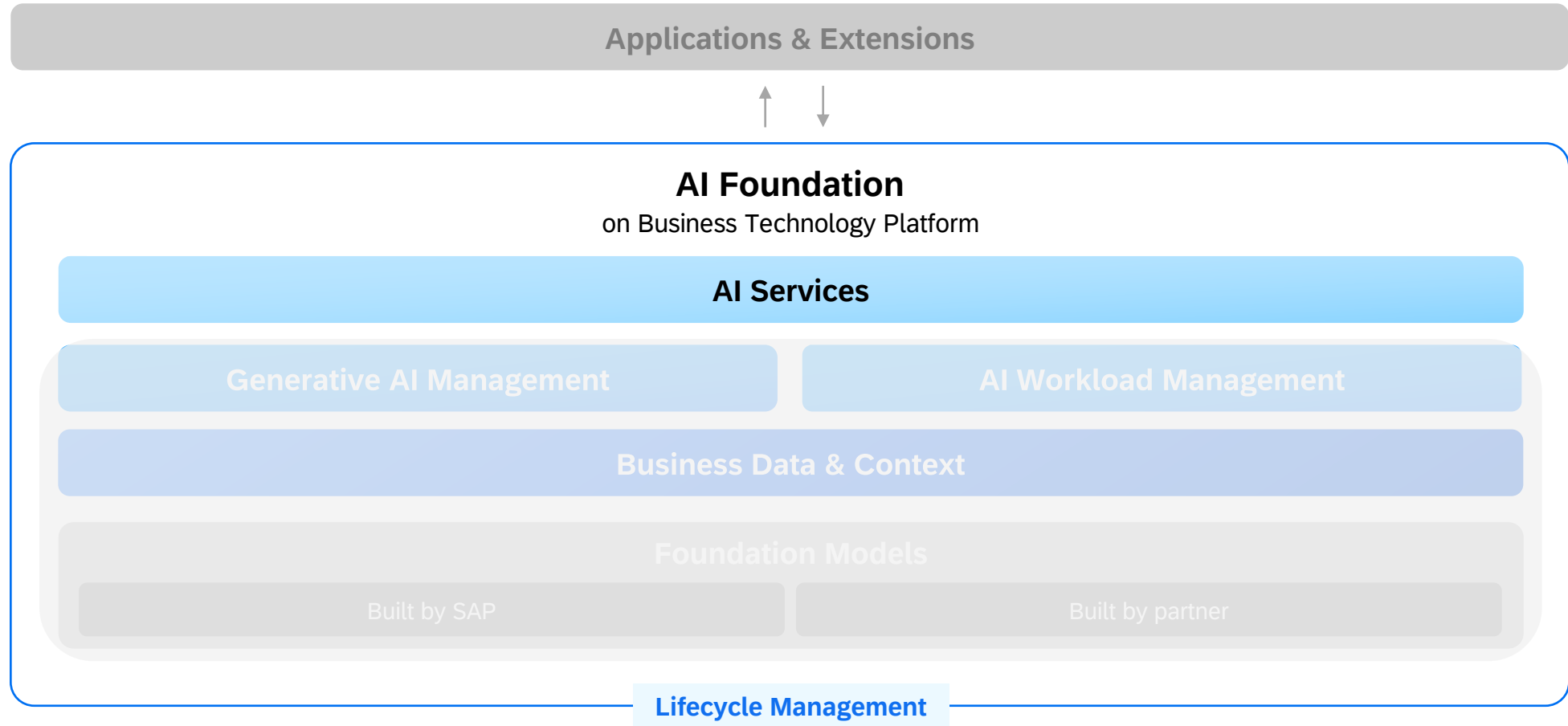
Microsoft

# A complete set of services for AI developers on SAP BTP

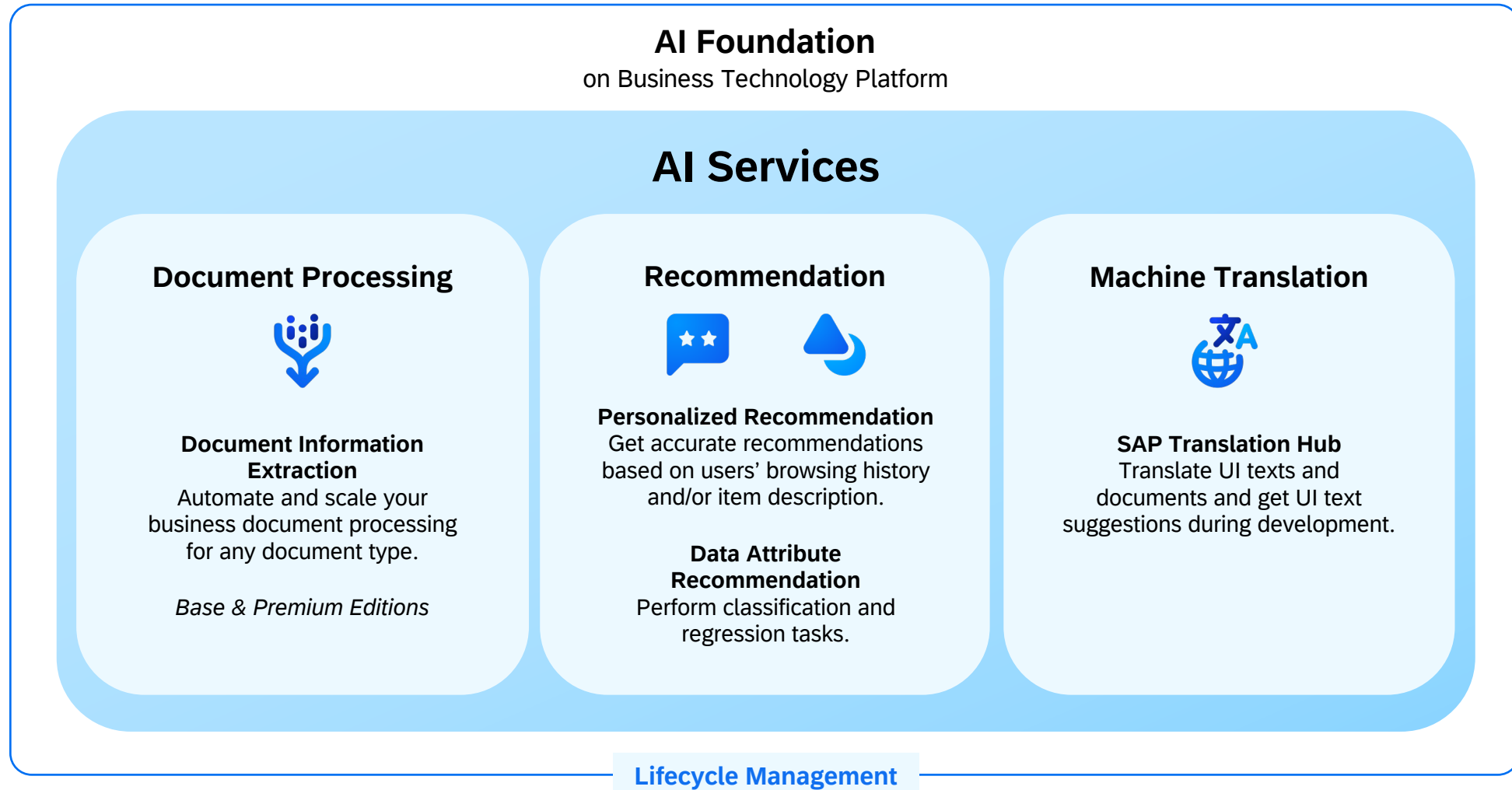




# Ready-to-Use AI Services



# AI Services, models pre-trained on business-relevant data





# The Cost of Unstructured Data

Processing of unstructured data causes high costs, missed insights, and operational bottlenecks impacting growth and efficiency.



**17.60€**

AVERAGE COST  
PER INVOICE

- BILLEMENTIS

**80-90%**

OF ENTERPRISE DATA  
IS UNSTRUCTURED

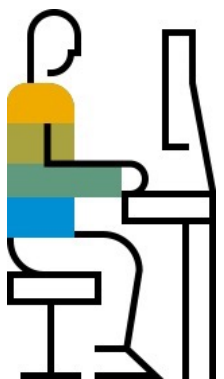
- GARTNER

**4 trillion**

PAPER DOCUMENTS  
ANNUALLY IN THE US

- EMERGEN RESEARCH

# Problem: Large Amounts of Incoming business documents



John,  
AP-Clerk

**Time2Go  
Company**

**Your Company**  
M. Max Apfel-Birne  
Birkenstr. 24  
54321 Birnenstadt

**Contact:**  
Time2Go Company  
Am Apfelbau 13  
12345 Apfelstadt  
**Tel.** +1134/43215  
**Date:** 01.11.2013  
**Invoice n°:** 123456  
**Customer n°:** 0987

**Invoice**

Amount	Unit	Object	Price
1400	Pc.	Apples	\$1,684.-
120	Kg	Nuts	\$2.000
<b>Total Amount</b>			<b>\$ 3,684.-</b>
19% taxes incl.			

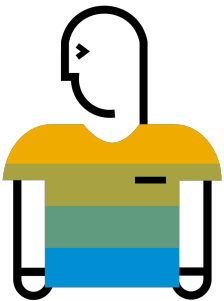
To pay until 11.12.2013

Time2Go Company  
Am Apfelbau 13  
12345 Apfelstadt

DE12 123412341234  
Apfelbank  
XYZ1234ZXY

Company	Time2Go Company
Supplier ID	009753
Invoice N°	123456
Amount	3684.00
Currency	USD
Date	2013-11-01
Position 1	Amount: 1400 Unit: PC Amount: 1684.00 Description: Apples
Position 2	Amount: 120 Unit: KG Amount: 2000.00 Description: Nuts

Enrichment  
happens  
manually

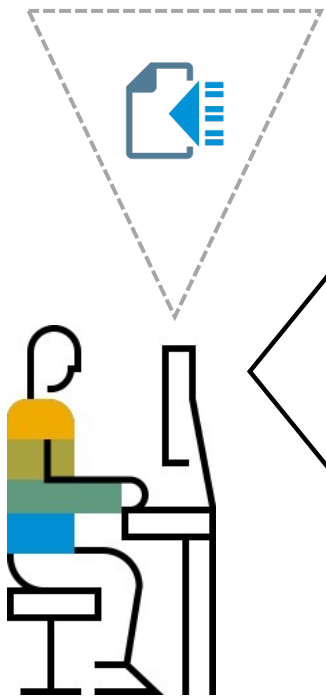


John,  
spends much time  
on searching and  
matching the right  
information





# Solution: Document Information Extraction



John,  
AP-Clerk

**Time2Go  
Company**

**Your Company**  
M. Max Apfel-Birne  
Birnenstr. 24  
54321 Birnenstadt

**Contact:**  
Time2Go Company  
Am Apfelbau 13  
12345 Apfelstadt  
**Tel.** +1134/43215  
**Date:** 01.11.2013  
**Invoice n°:** 123456  
**Customer n°:** 0987

Invoice

Amount	Unit	Object	Price
1400	Pc.	Apples	\$1,684.-
120	Kg	Nuts	\$2.000
<b>Total Amount</b>			<b>\$ 3,684.-</b>

19% taxes incl.

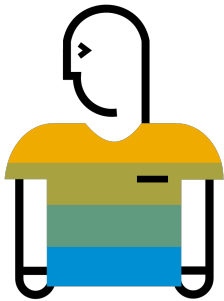
To pay until 11.12.2013

Time2Go Company  
Am Apfelbau 13  
12345 Apfelstadt

DE12 123412341234  
Apfelbank  
XYZ1234ZXY

Company	Time2Go Company
Supplier ID	009753
Invoice N°	123456
Amount	3684.00
Currency	USD
Date	2013-11-01
Position 1	Amount: 1400 Unit: PC Amount: 1684.00 Description: Apples
Position 2	Amount: 120 Unit: KG Amount: 2000.00 Description: Nuts

Enrichment  
happens  
automatically

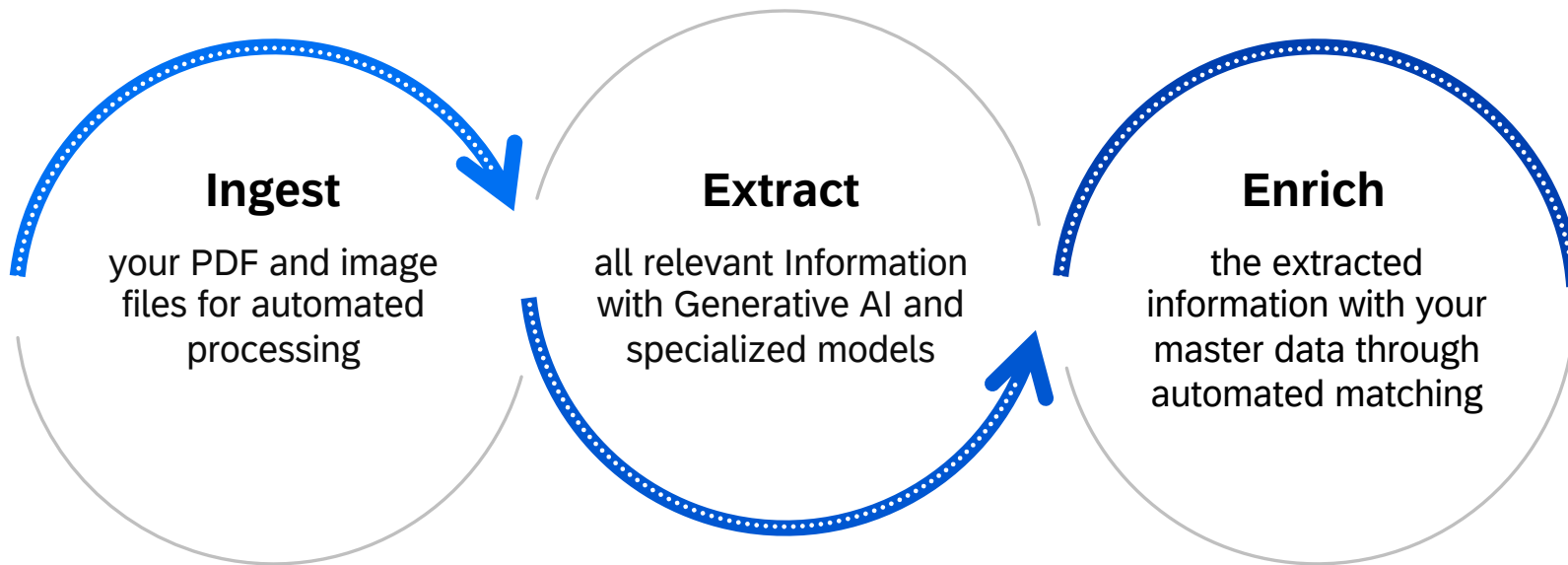


John,  
Can now do more  
value  
creating tasks



# Document Information Extraction

## Intelligent document processing with SAP available on SAP Business Technology Platform



“

At Aspen Pumps, the Document Information Extraction service from SAP helps us to achieve ~90% of extraction accuracy for supplier invoices out of the box, laying a great foundation for much faster execution of Accounts Payable processes. It helps to save up to 350 hours monthly in invoice processing, so approximately £5000 per month.

- Jon Curtis, Group Business Systems Consultant, Aspen Pumps Group

 HAMBURG

 HomeMade

 REHAU

AVAYA

 Walgreens Boots Alliance

 SAP  
Innovation  
Awards 2023

 SAP  
Innovation  
Awards 2022



# Document Information Extraction



## BASE

Automate core business document processing use cases in selected languages.

Use cases (supported languages)

- Invoice (15)
- Payment Advice (2)
- Purchase Order (3)
- Business Card (14)
- Templates (41)

## PREMIUM

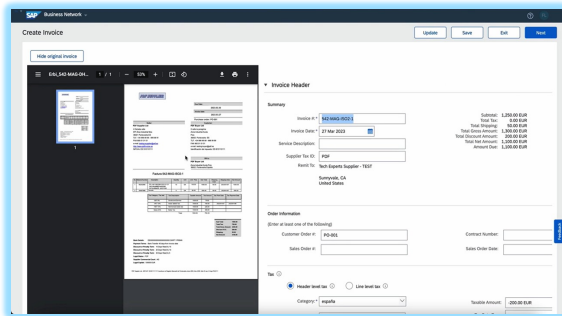
Automate all business document use cases in most languages end-to-end.

Out of box support for **40+ languages with easy extensions** for any kind of document.

- Auto extraction
- Language coverage
- Extensions of SAP Standard Schemas
- Outlook: Immediate Improvement

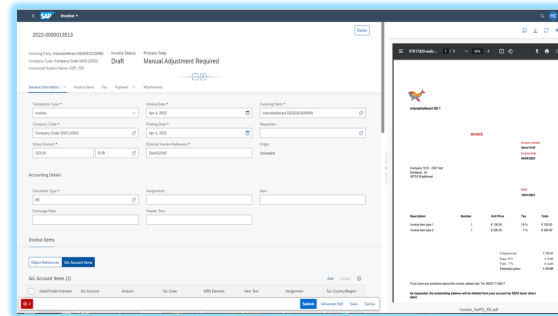
# Business process-specific AI for Document Processing in SAP

## SAP Business Network Intelligent Invoice Conversion



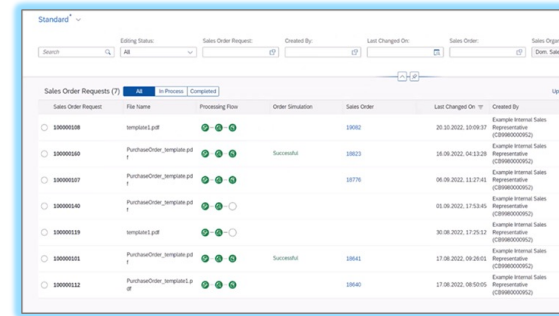
- Improve operational efficiency through simple invoice upload and automation for invoice conversion
- Increase invoice accuracy by reducing manual and error-prone entry
- Accelerate invoice payments by reducing the number rejected invoices by your customers
- See in action: [Intelligent Invoice Conversion](#)

## SAP Ariba Central Invoice Management



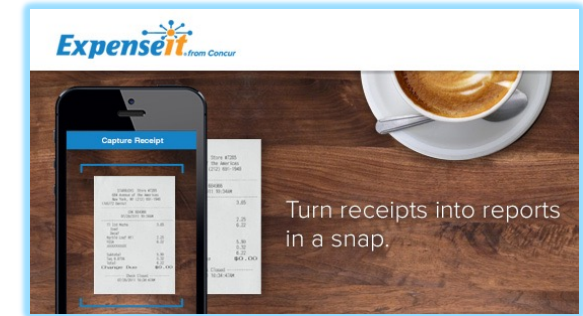
- Provides inbound handling via Business Network and central processing of invoices.
- Deployed on BTP available for SAP S/4HANA Cloud, public edition
- See in action: [Central Invoice Management](#)

## SAP S/4HANA Sales Order Automation



- Enables faster completion to prevent delays in the sales order delivery
- Reduces redundant tasks to free time for users
- Reduces the risk of human errors in the process
- See in action: [Sales Order Automation with AI](#)

## SAP Concur ExpenseIt



- Images of receipts are captured in the ExpenseIt app
- Information extraction starts on the device with ML models analyzing the image
- Improved employee productivity and overall audit efficiency
- See in action: [ExpenseIt](#)

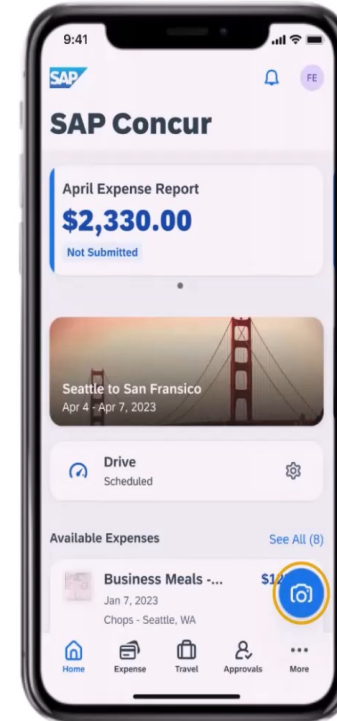
## Document Information Extraction

Responsible AI

**Maximize** efficiency,  
reduce risks and  
maintain compliance  
in employee spending

**52%**

fewer errors  
in reporting expenses

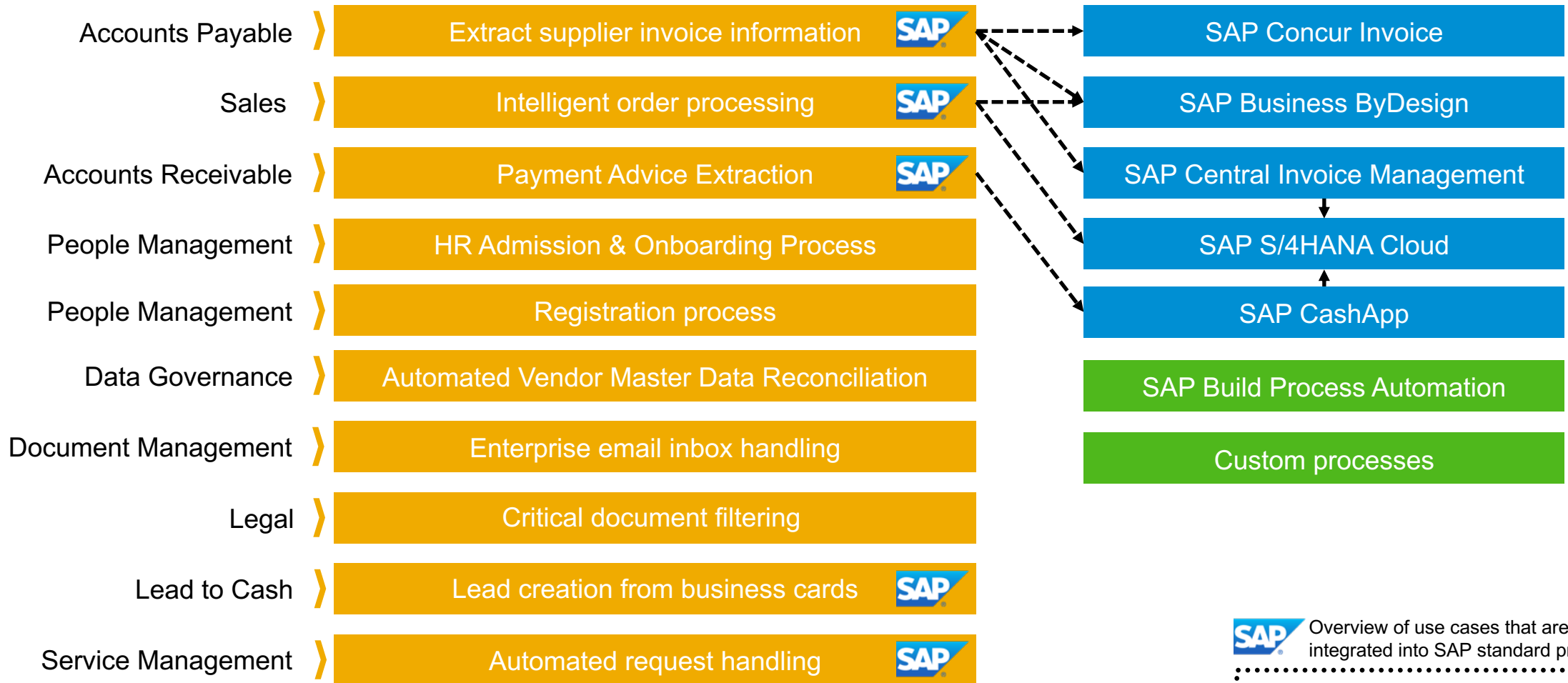


Document Information Extraction in  
Concur Expense – SAP Concur



# Document Information Extraction

## Business use cases

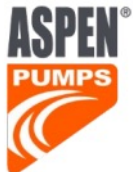
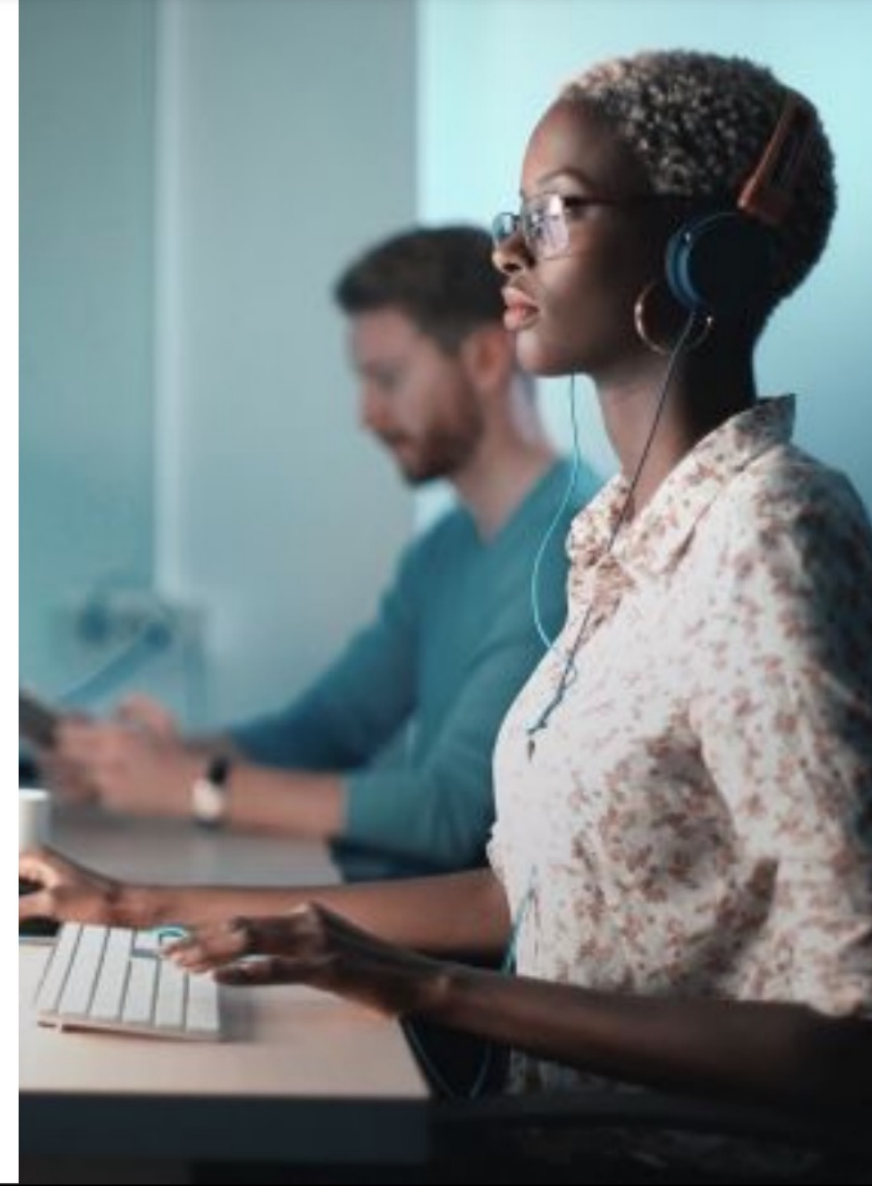


**SAP** Overview of use cases that are natively integrated into SAP standard products:

**STANDARD INTEGRATIONS**

“At **Aspen Pumps**, the Document Information Extraction service from SAP helps us to achieve **~90% of extraction accuracy** for supplier invoices out of the box, laying a great foundation for much faster execution of Accounts Payable processes. It helps to **save up to 350 hours monthly** in invoice processing, so approximately **£5000 per month.**”

Jon Curtis, Group Business Systems Consultant, Aspen Pumps Group



Aspen Pumps  
Apex Way, Hailsham,  
United Kingdom  
[www.aspenpumps.com](http://www.aspenpumps.com)

Industry  
Industrial Machinery  
and Components

Featured Solutions and Services  
Document Information Extraction service  
(DOX), one of SAP AI Business services



# Success story - Automate AP Processes

## Canadian integrated energy company (2022)



### Challenges

Several inefficiencies identified in customer's existing invoice management process, including inflexibility, high IT demands, and a poor invoice identification rate of less than 7%.



### Solution and business results

Implementation of **SAP Build Process Automation, powered by Document Information Extraction (one of the SAP AI Business Services on SAP BTP)**

- 80% invoice recognition and posting rate
- 20,000+ invoices processed monthly
- 20 FTE workload
- 7,000\$ savings per day
- 120 hours savings per day
- 1,800,000\$ projected savings p.a.

KPIs	Company's lower bound	Company's upper bound	Industry avg. <a href="#">(reference, p.16)</a>
Assumed cost per invoice (Y)	10	15	17.6
Reported saving through SAP Build + DOX (X)	7	7	7
Remaining cost per invoice	3	8	10.6
Anticipated cost reduction (X/Y)	70%	46%	40%





# Document Information Extraction

## Key takeaways

**Out-of-the-box automation** with pretrained models for different document types

---

**Integrated offering** available as part of various SAP applications

---

Focus on **improving the efficiency** of your employees

---

State of the art technology is used to deliver **best of breed accuracy**



# Document Information Extraction

Start today



## Ready to Use

- Available under [Free Tier](#) option on SAP BTP
- Commercially available via **Cloud Platform Enterprise Agreement**, on **SAP Store** or as **Pay-as-you-go** model
- Available as **Test Demo & Development** for Partners
- Available on following Data Centers: EU10, EU11, JP10, US10, AP10

[SAP HELP  
PORTAL](#)

[SAP DISCOVERY CENTER](#)



## Natively Available

The service is integrated into variety of SAP standard products that you use already today:

- [SAP Concur Invoice Capture](#)
- [SAP Central Invoice Management for SAP S/4HANA Cloud](#)
- [SAP CashApplication](#)
- [SAP Business ByDesign](#)
- [SAP S/4HANA Cloud](#)
- [SAP Build Process Automation](#)
- ...and many more (see consumption options).

[SAP  
COMMUNITY](#)

[CONSUMPTION OPTIONS](#)

# Document Information Extraction, Premium Edition

## Enablement & Wrap up



- ~80 percent of data is unstructured. Great deal of business data is locked in business documents
- SAP is at the forefront of adopting Generative AI in reliable, relevant and responsible way
- SAP provides state-of-the-art GenAI capabilities to process unstructured documents of any kind.

### Assets:

Available on SAP BTP Trial - get started with [tutorials!](#)

State tuned with [SAP Community](#) for the GA!



# Thank you.

Contact information:

[ai@sap.com](mailto:ai@sap.com)



Follow us



[www.sap.com/contactsap](http://www.sap.com/contactsap)

© 2021 SAP SE or an SAP affiliate company. All rights reserved.

No part of this publication may be reproduced or transmitted in any form or for any purpose without the express permission of SAP SE or an SAP affiliate company.

The information contained herein may be changed without prior notice. Some software products marketed by SAP SE and its distributors contain proprietary software components of other software vendors. National product specifications may vary.

These materials are provided by SAP SE or an SAP affiliate company for informational purposes only, without representation or warranty of any kind, and SAP or its affiliated companies shall not be liable for errors or omissions with respect to the materials. The only warranties for SAP or SAP affiliate company products and services are those that are set forth in the express warranty statements accompanying such products and services, if any. Nothing herein should be construed as constituting an additional warranty.

In particular, SAP SE or its affiliated companies have no obligation to pursue any course of business outlined in this document or any related presentation, or to develop or release any functionality mentioned therein. This document, or any related presentation, and SAP SE's or its affiliated companies' strategy and possible future developments, products, and/or platforms, directions, and functionality are all subject to change and may be changed by SAP SE or its affiliated companies at any time for any reason without notice. The information in this document is not a commitment, promise, or legal obligation to deliver any material, code, or functionality. All forward-looking statements are subject to various risks and uncertainties that could cause actual results to differ materially from expectations. Readers are cautioned not to place undue reliance on these forward-looking statements, and they should not be relied upon in making purchasing decisions.

SAP and other SAP products and services mentioned herein as well as their respective logos are trademarks or registered trademarks of SAP SE (or an SAP affiliate company) in Germany and other countries. All other product and service names mentioned are the trademarks of their respective companies.

See [www.sap.com/copyright](http://www.sap.com/copyright) for additional trademark information and notices.