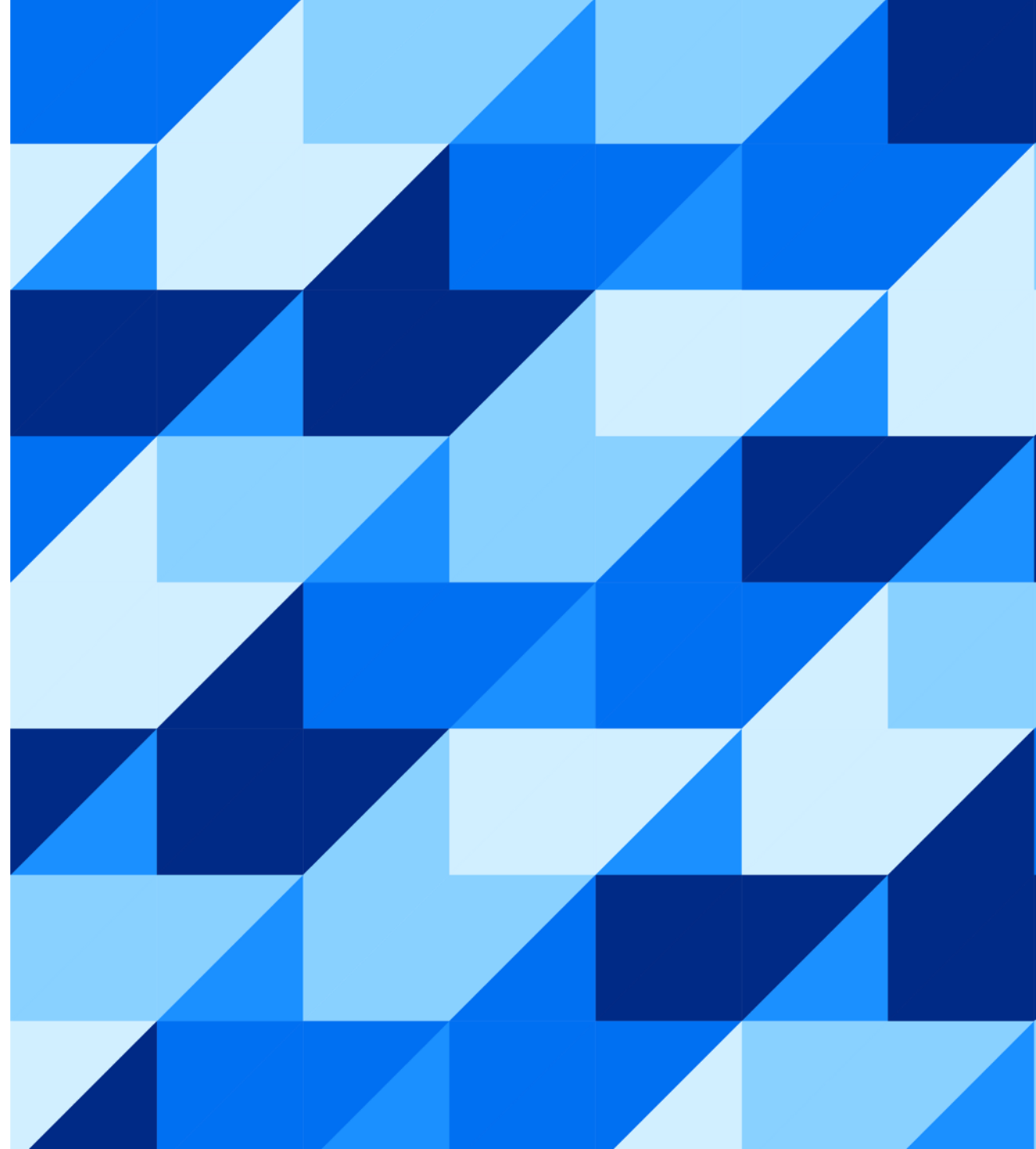




# SAP Datasphere Unleash the power of business data

Florian Neukirch, SAP  
February 20, 2024

Public



# Data needs context for authoritative decision-making

Innovation has happened in silos

Data, especially metadata, has been removed from its context

There's been a fundamental error—focusing solely on technology rather than the data

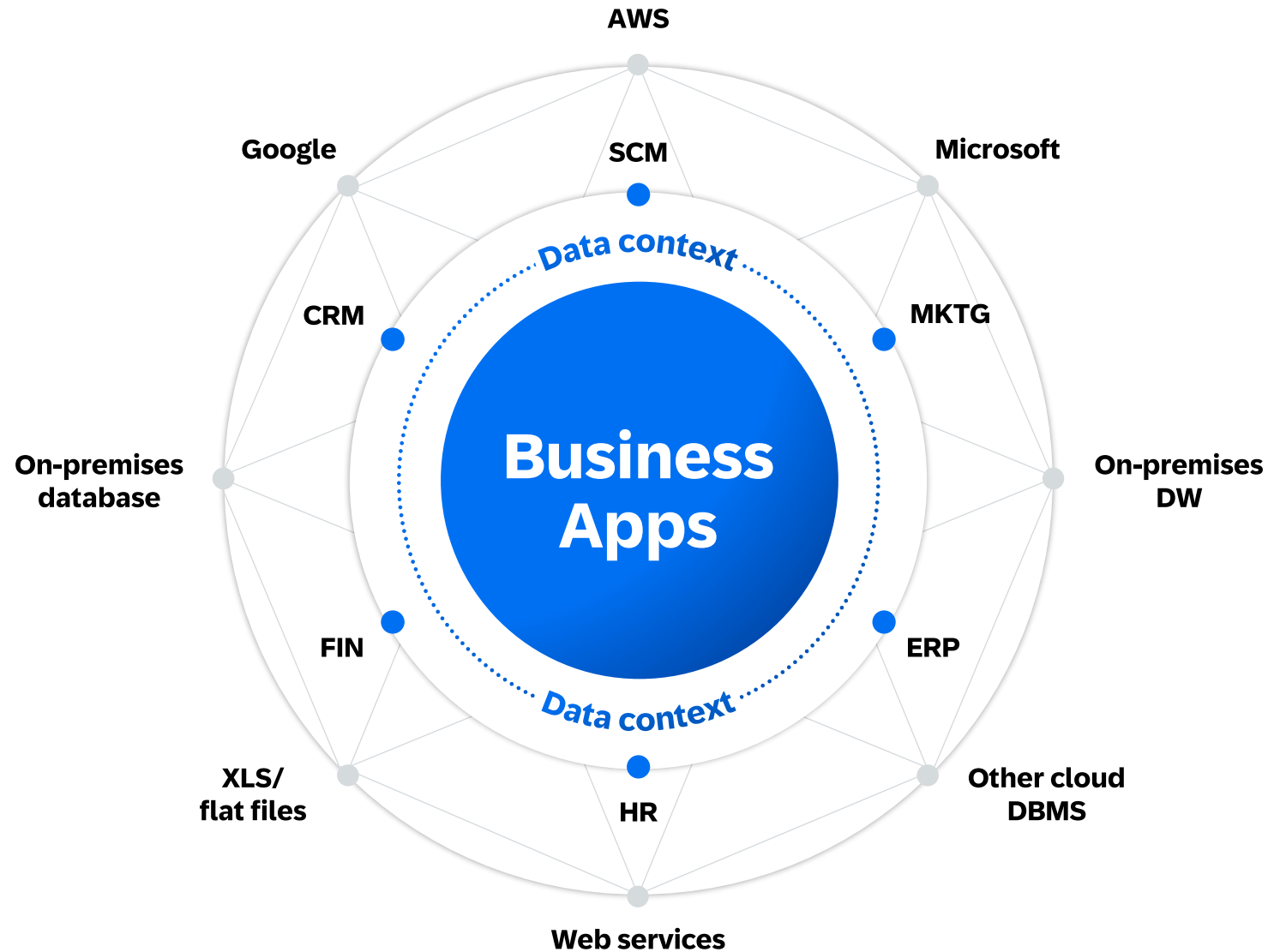


# (Multi-) cloud brings new opportunities and challenges

New data sets spawn new projects

On-premises sources remain

Complexity has increased, shifting governance and integration work back to customers



# Universal yet opposing data needs for business and technology stakeholders



# SAP Datasphere is the foundation for a business data fabric architecture

## Data consumers

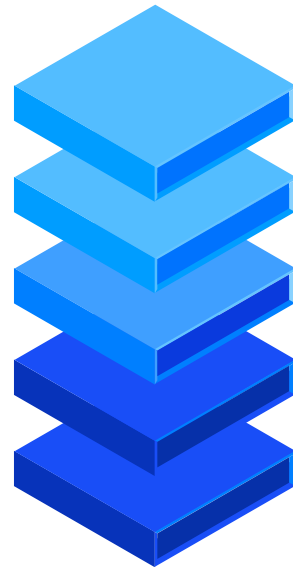
Planning and analytics

Intelligent data apps

Data science

## SAP Datasphere running SAP BTP

Security  
Access control  
Availability



### Discovery, consumption, sharing & self-service

space, data product, marketplace

### Governance

cataloging, metadata management, lineage, privacy, quality

### Business semantics

semantic onboarding, entity import, business content

### Modelling

relational & rich analytic models, lifecycle management, authorizations

### Data integration & preparation

real-time replication & federation, transformation, scheduling, monitoring

## SAP and non-SAP data

Applications

On-premises  
Data Warehouses

Cloud Data Warehouses  
and Lakehouses

Relational  
Databases

Unstructured/  
Semi-structured Data

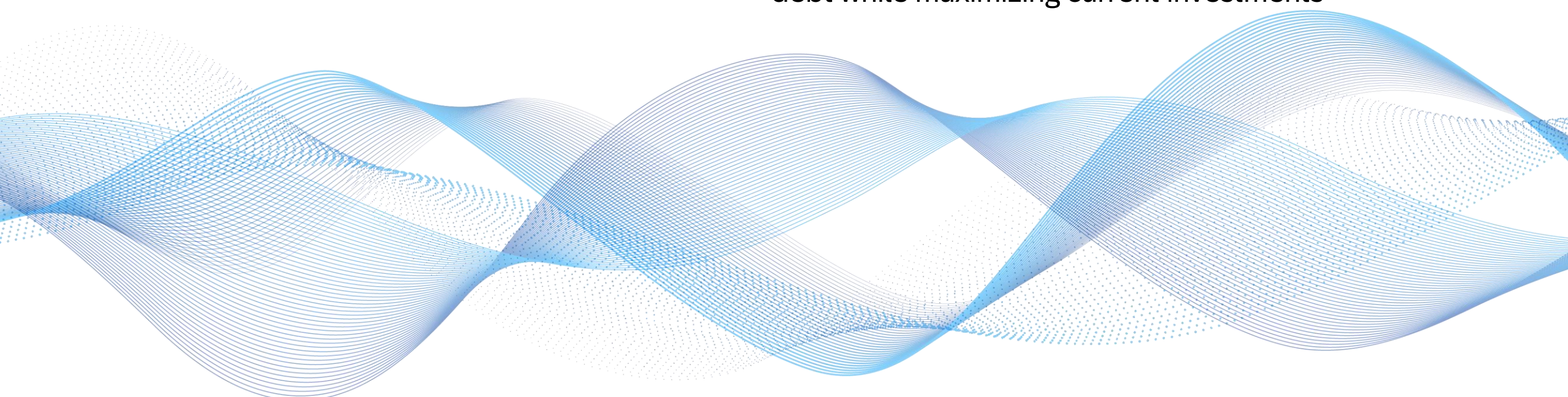
# Why a business data fabric

**Self-service access** to trusted data breeds agility and accelerated, accurate decisions

**Comprehensive data governance** assures every stakeholder that private data stays private

**Real-time data**, infused throughout your data architecture helps business users, partners, and employees make in-the-moment improvements

A **simplified data landscape** reduces costs and technical debt while maximizing current investments



# Integrated Data & Analytics portfolio to realize our vision

## Planning and analytics



### Extended planning and analytics

Take enterprise planning to the next level with an optimized, vertically integrated consumption layer for planning and analytics workloads.

**SAP Analytics Cloud**

## Data management and data warehousing



### Business data fabric

Deliver an integrated, semantically rich data layer over underlying data landscapes to provide smooth and scalable access to data without duplication.

**SAP Datasphere**

## Operational databases



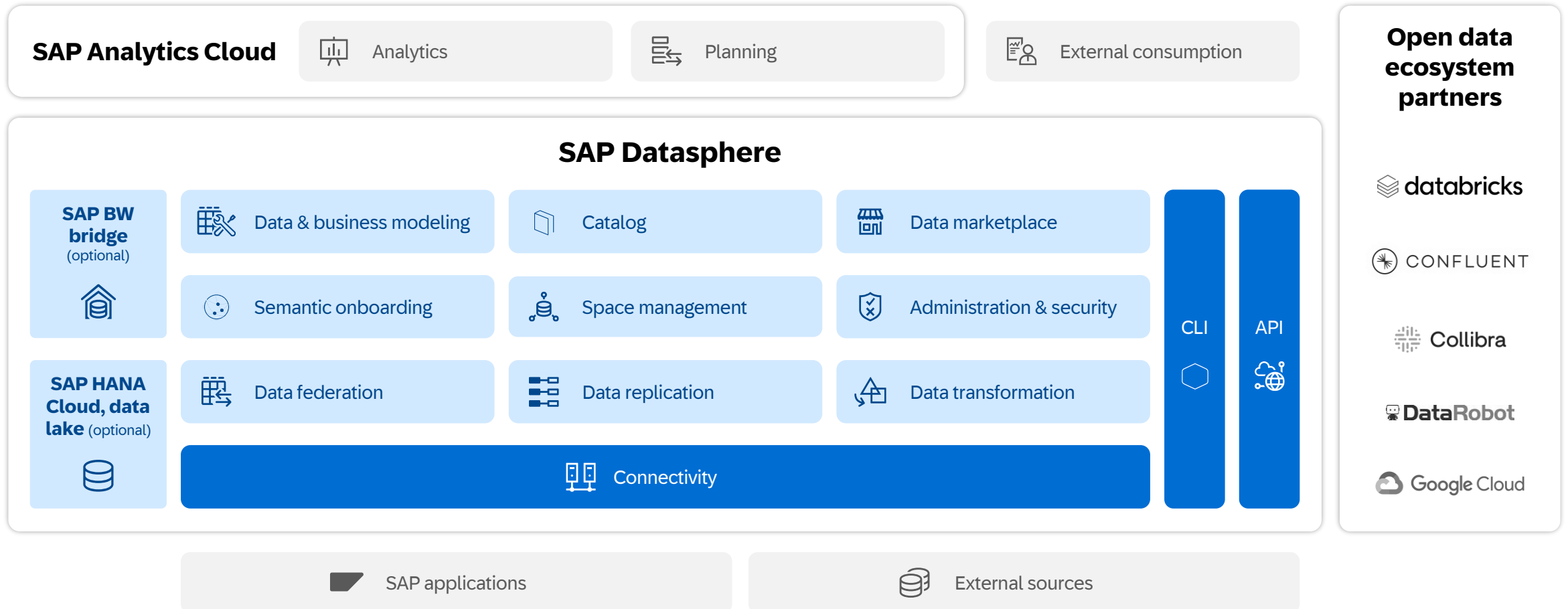
### Intelligent data applications

Build apps leveraging analytical capabilities (machine learning, graph, spatial), combining historical and real-time data.

**SAP HANA Cloud**



# SAP Datasphere overview





# Different ways to connect data to SAP Datasphere

Built-in connectors



Data marketplace



Open connectors



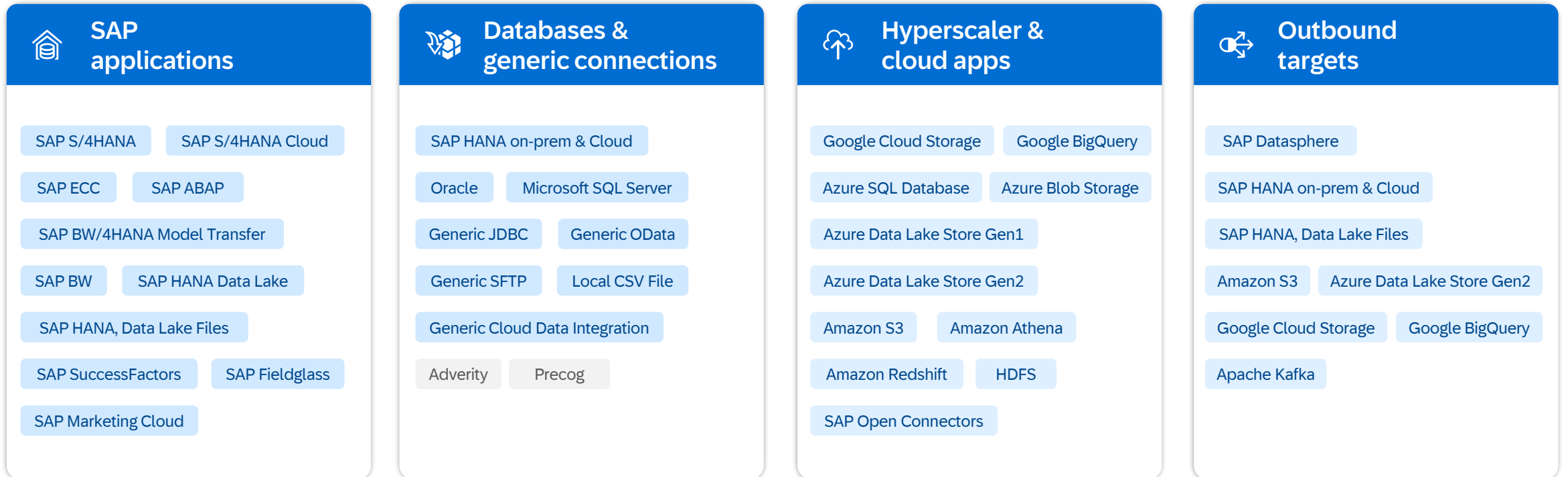
SAP BW bridge



External tooling



# Connection overview

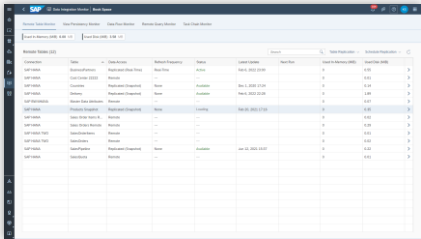


SAP Help: [Connection overview](#)

# Federation and replication options

## Remote tables

### Virtual Access

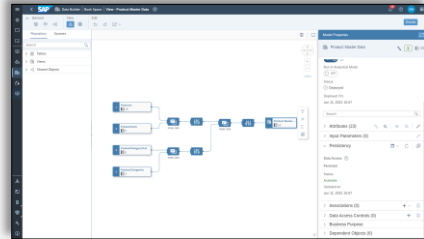


#### Remote table federation

- Leave data in the source system and access remotely in real-time when needed
- No upfront data movement
- Federation is supported across various sources and hyperscalers



### Replication



#### Remote table replication

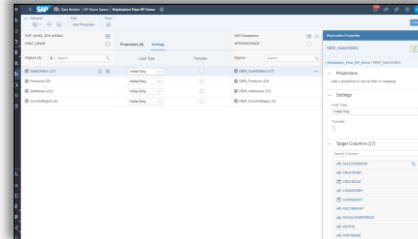
- Real-time replication or snapshots using single entities
- Schedule via task chains

#### View persistence

- Materialize view output results in a stable persistence
- Schedule via task chains

## Cloud native data integration

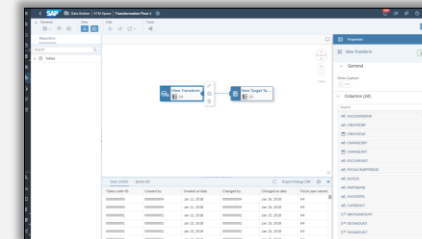
### Replication flow



#### Mass data replication

- Data replication with multiple entities from a variety of sources
- Flexible targets to Datasphere and outbound target systems
- Support initial and delta replications from various sources

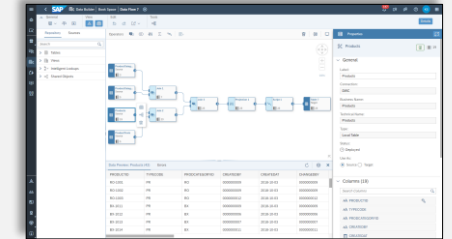
### Transformation flow



#### Cloud-based data transformations

- Load data from one or more source tables and apply transformations (e.g. SQL, field-based)
- Store output results in a local target table
- Supports to process delta changes

### Data flow



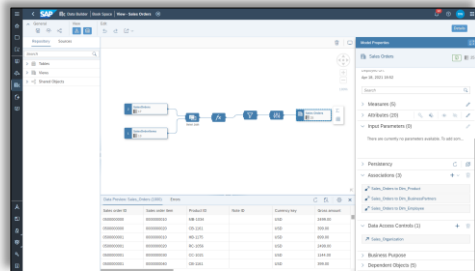
#### Batch loads & transformations

- Combine structured and semi-structured data while defining ETL processes
- Advanced transformation capabilities leveraging Python 3
- Schedule via task chains

# Data modeling using integrated editors

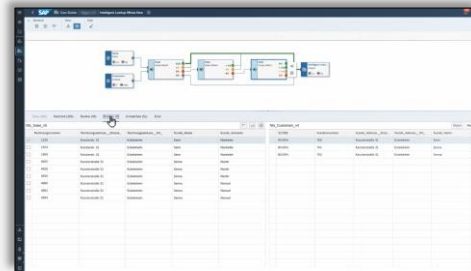
## Built-in editors covering no code to pro code

### Graphical & scripted view



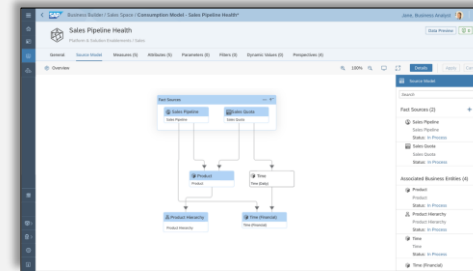
- Collection of no code/low code editors to support graphical modeling
- Model E/R-models, tables, views, SQL & SQL-script views
- Focuses on most-used modeling operators

### Intelligent lookup



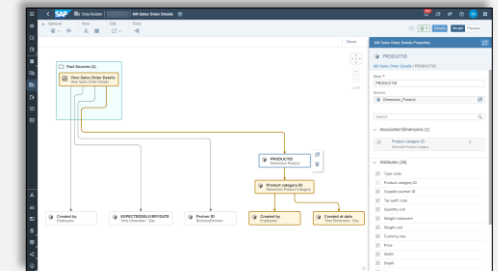
- Interactive data harmonization environment
- Iteratively join entities by defining rules to match records
- Mappings created once and can be automated through rules
- Use output view in other models

### Business model



- Allow for a greater degree of self-service
- Non-disruptive environment for business scenarios – independent from the data integration layer

### Analytic model



- Rich multi-dimensional & analytical modelling reusing pre-defined measures, hierarchies, filters, parameters & associations
- Built-in analytical preview incl. filtering, pivoting, hierarchies, etc.
- Seamlessly integrates with SAP Analytics Cloud and Office 365 to analyze data

# Reuse SAP business semantics with a single entry point

## Semantic onboarding

Bringing together all features & processes that allow SAP customers to make semantics available at ease & scale

### Import entities

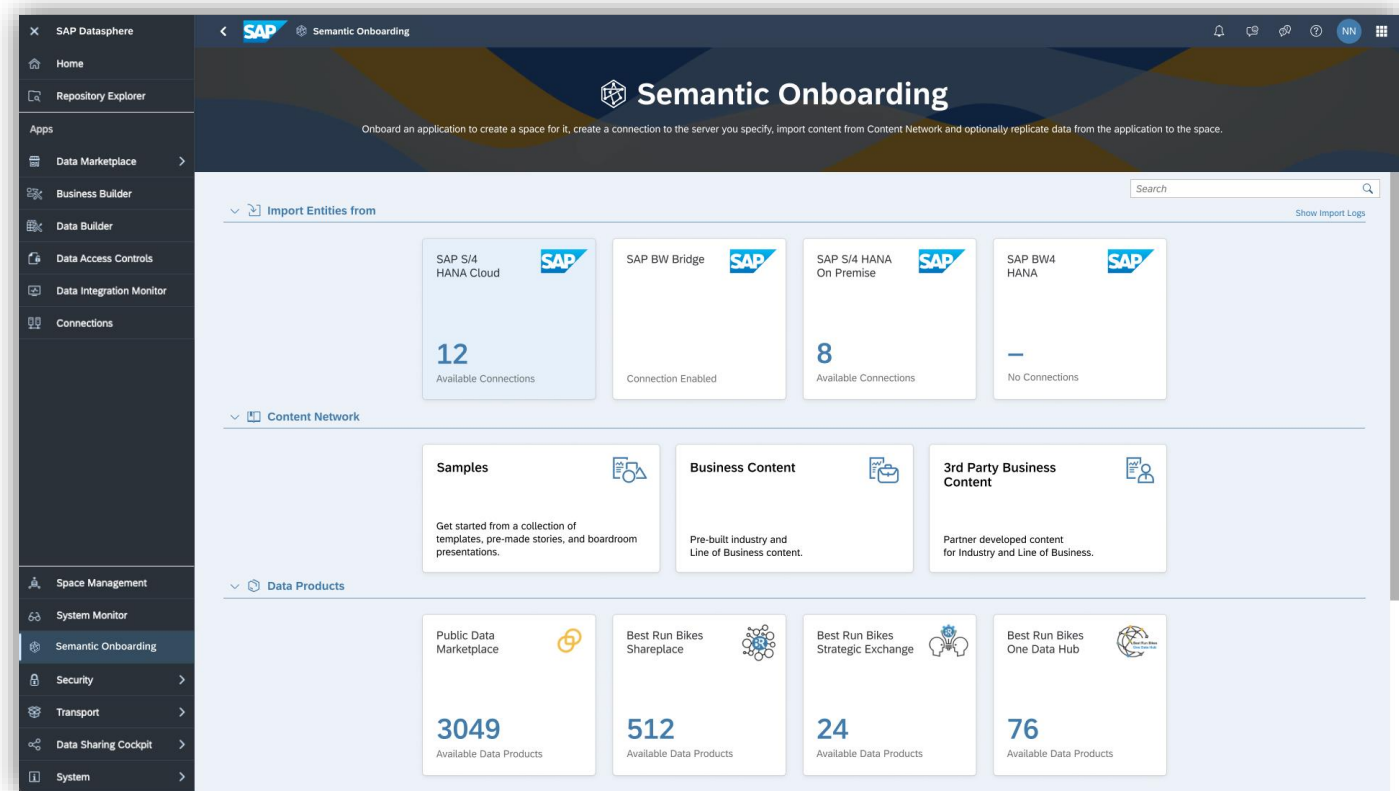
Harmonize existing metadata import options from SAP S/4HANA Cloud, SAP S/4HANA, SAP BW, SAP BW/4HANA

### Content network

Bring in prebuilt SAP and 3rd party business content as accelerator

### Data products

Access customer and partner managed data products to democratize SAP data within SAP Datasphere & beyond via API



The screenshot displays the SAP Semantic Onboarding interface within the SAP Datasphere. The interface is divided into three main sections: Import Entities from, Content Network, and Data Products. The left sidebar contains navigation options such as Home, Repository Explorer, Apps, Data Marketplace, Business Builder, Data Builder, Data Access Controls, Data Integration Monitor, Connections, Space Management, System Monitor, Semantic Onboarding, Security, Transport, Data Sharing Cockpit, and System.

**Import Entities from:**

Source	Available Connections
SAP S/4 HANA Cloud	12
SAP BW Bridge	Connection Enabled
SAP S/4 HANA On Premise	8
SAP BW4 HANA	No Connections

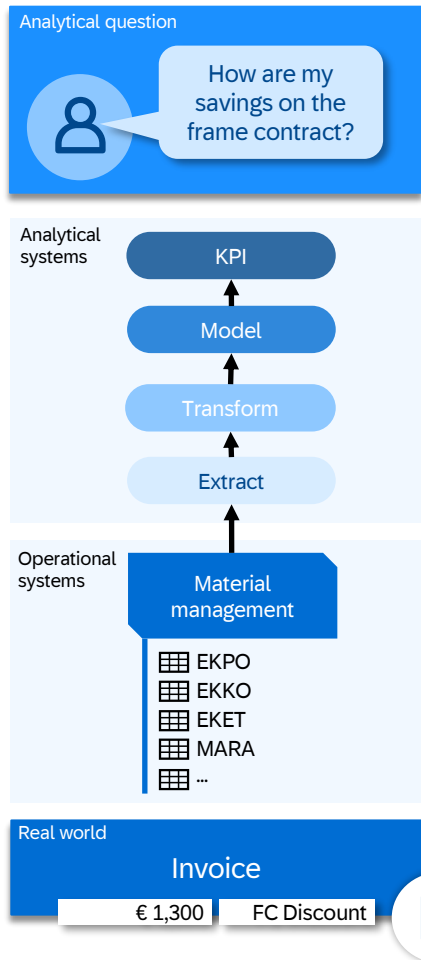
**Content Network:**

Category	Description
Samples	Get started from a collection of templates, pre-made stories, and boardroom presentations.
Business Content	Pre-built industry and Line of Business content.
3rd Party Business Content	Partner developed content for Industry and Line of Business.

**Data Products:**

Product	Available Data Products
Public Data Marketplace	3049
Best Run Bikes Shareplace	512
Best Run Bikes Strategic Exchange	24
Best Run Bikes One Data Hub	76

# SAP business content

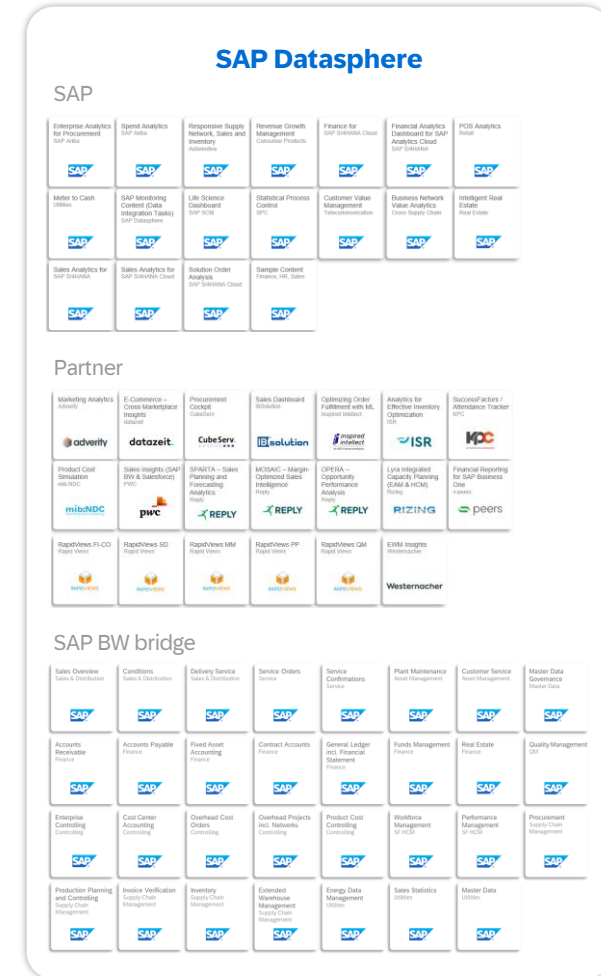


## Business content collection

Leverage SAP's business expertise and knowledge from our ecosystem of partners with prebuilt data models, semantic views of SAP application data, and transformation logic.

Continuously growing number of content packages

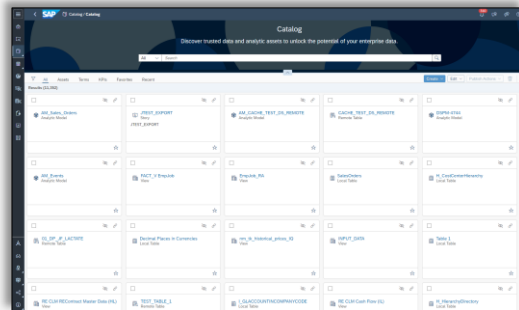
- 250+ content packages built by SAP & partners for SAP Analytics Cloud and SAP Datasphere
- 31 content packages with SAP BW bridge (11,000+ reusable objects)
- SAP S/4HANA content generation via semantic onboarding (1,000+ Fiori apps ready for import)



# Governance in SAP Datasphere

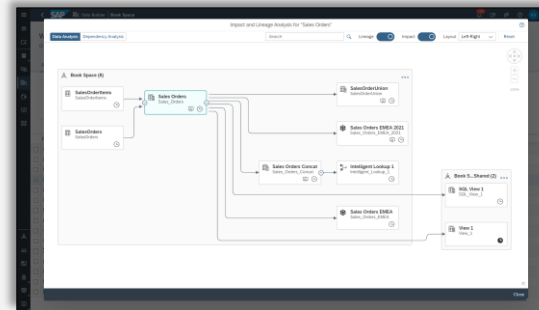
## Governance across all areas

### Catalog



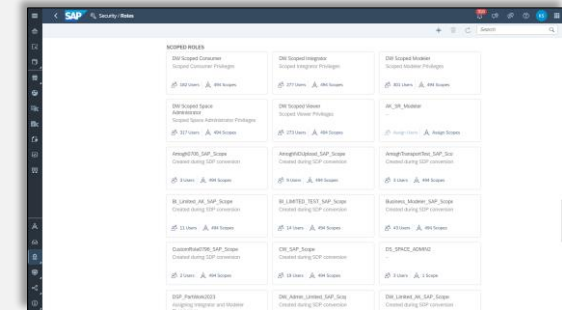
- The central place to discover, classify, profile, understand, and prepare all the data in your enterprise beyond SAP Datasphere only
- Map out a connected view of your data sources, build & apply data governance processes, and offer trusted, self-service data discovery to your users

### Metadata & lineage



- Use the repository explorer to browse, create and import objects in SAP Datasphere
- Search and filter the list of existing objects or open them centrally

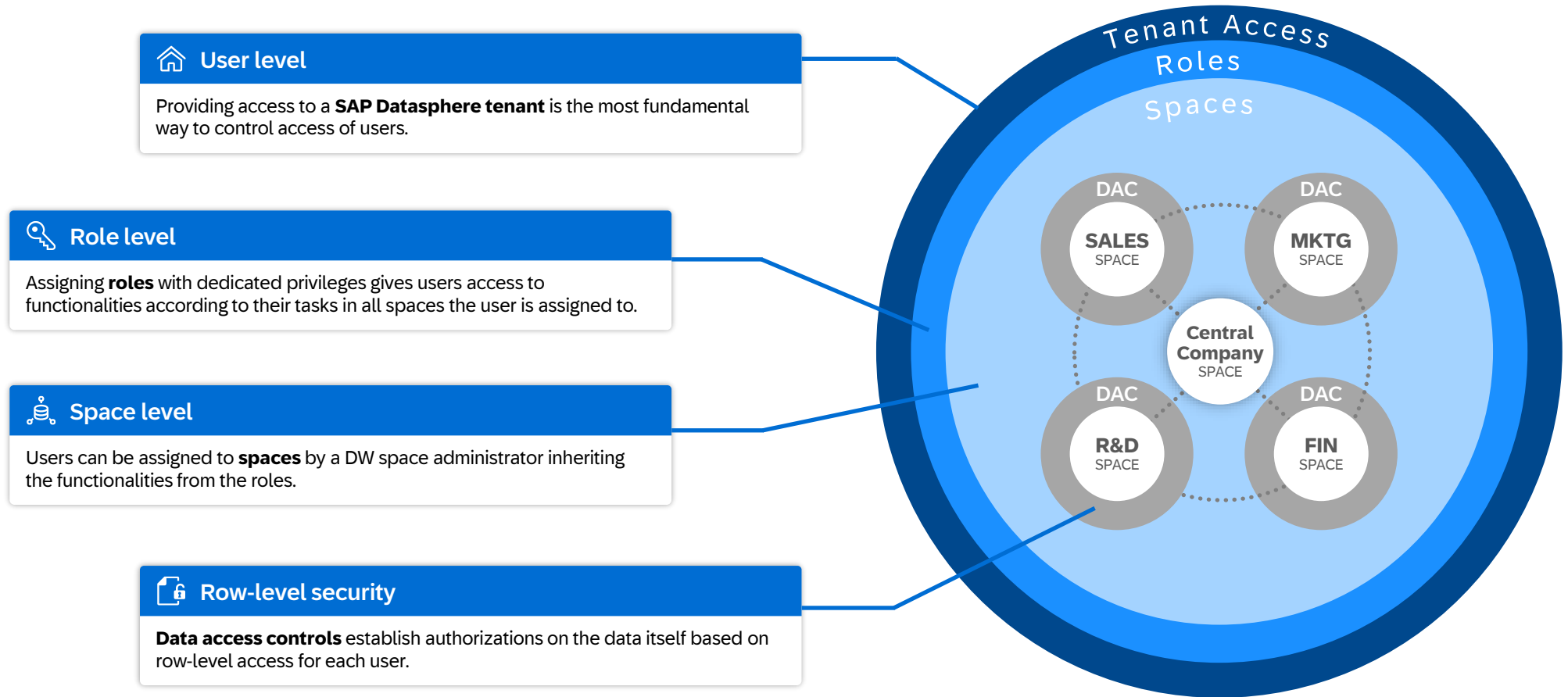
### Data privacy



- SAP Datasphere is designed to fulfill the highest security standards which guarantee the safety of your data
- Security options range from cloud network communication and identity provider settings to user and access management as well as spaces, roles and data access controls

# Different levels of authorizations in SAP Datasphere

*Before introducing scoped roles*



## Challenge

The roles of users are the same for all spaces they are assigned to, and cannot be different from space to space.

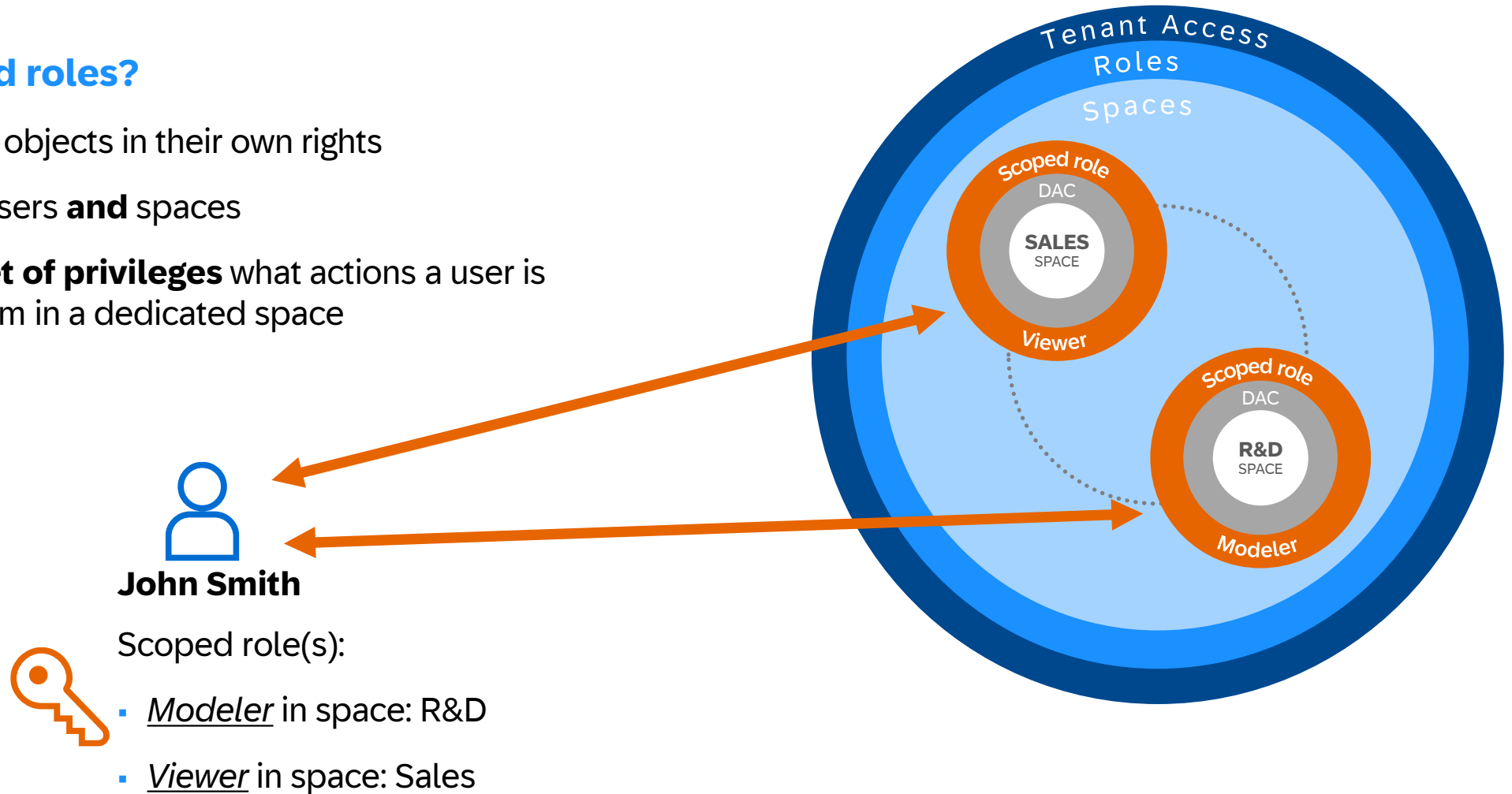


# Different levels of authorizations in SAP Datasphere

Introducing scoped roles

## What are scoped roles?

- Scoped roles are objects in their own rights
- Are assigned to users **and** spaces
- Define by their **set of privileges** what actions a user is allowed to perform in a dedicated space



# It all starts with a space in SAP Datasphere

## What is a space?

A space is a secure area created by an administrator, in which members can acquire, prepare, and model data.

**MY\_WONDERFUL\_SPACE**

My Wonderful Space

✓ Healthy

Deployed on Feb 23, 2023 02:23

Storage:  
2.5 GB of 5 GB

Memory:  
1.5 GB of 2 GB

SAP Datasphere

👤 72 🔒 9 📁 143 Edit



**Resources** | Storage & RAM

**Users** | Only members get access

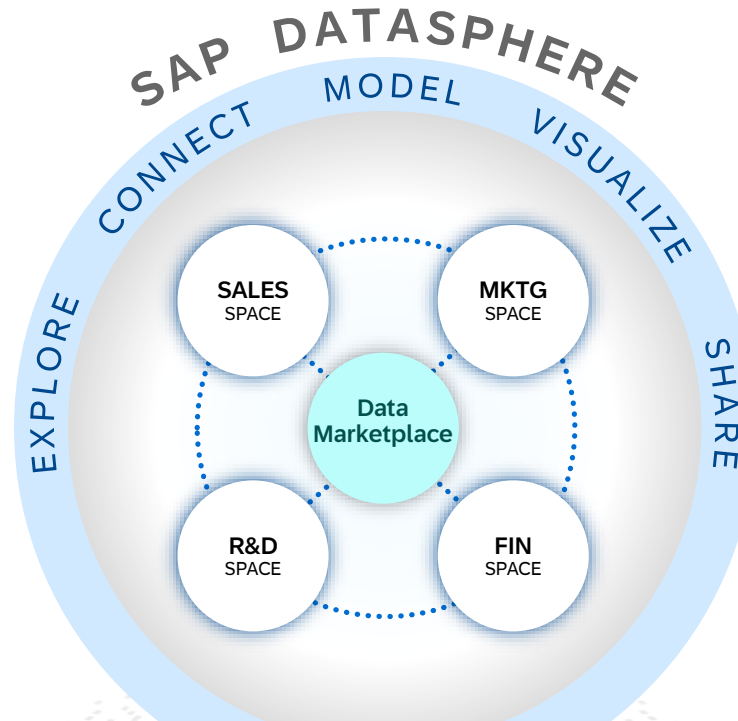
**Connections** | SAP & non-SAP systems

**Models** | Tables, views, data flows, ...

**Sharing** | Tables & views

# Reusable data products can be accessed in clicks for better, faster & more scalable data collaboration across spaces

- Independent virtual work environments**  
for departments, LOB's, data domains, project teams, and individual
- Data sharing fosters collaboration**  
between IT, business units, and projects to connect global & local data
- Get in control of data sprawl**  
by reusing shared data & avoid maintaining disconnected data sets



**Public & private data exchange**  
with other enterprises to access external data, collaborate or monetize data

**Open partner ecosystem**

**Data marketplace**  
3500+ data products

**Customers with SAP Datasphere**

IT GOVERNANCE • SECURITY • TRUST

SAP BW bridge

Native connectors

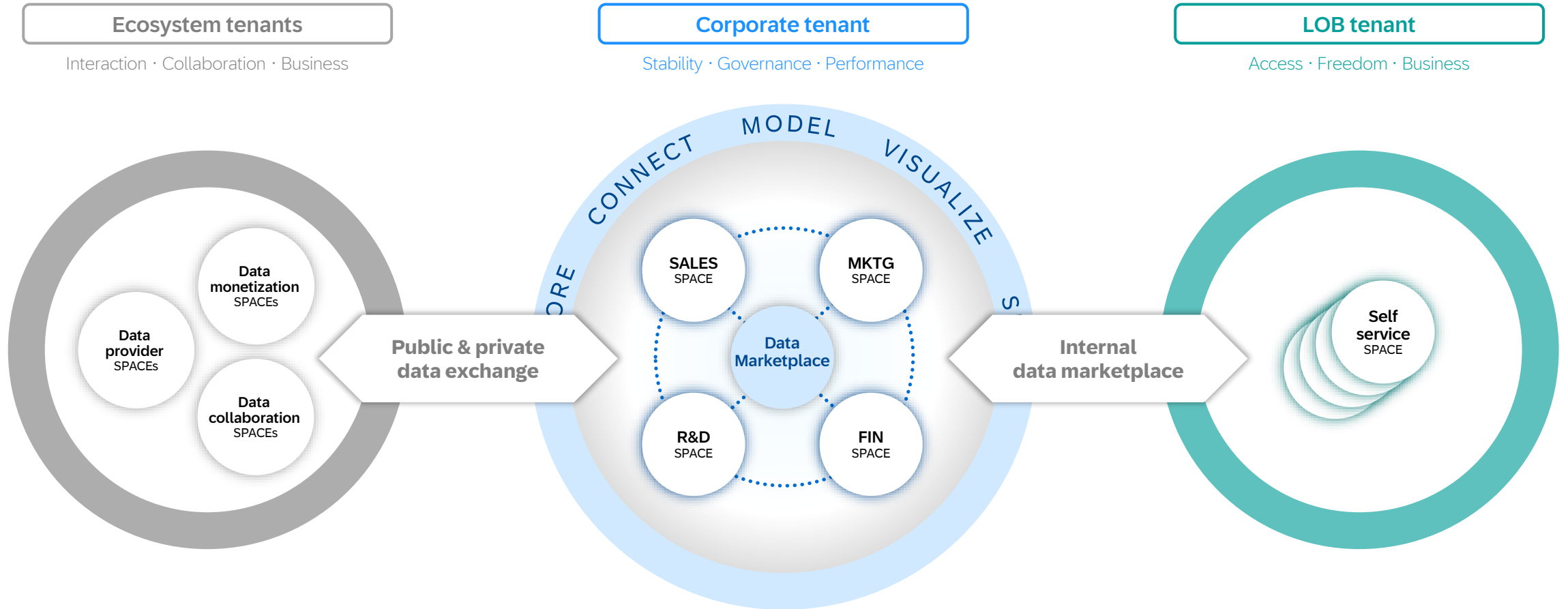
Open interfaces

SAP data

3rd party application data

# SAP Datasphere data marketplace

Facilitates self-service data exchange within and between enterprises to be a driving force for data democratization



# Key components of the Data Marketplace



## Data Provider

- Create Data Products on top of existing data assets
- Democratize data within organizations



## Context

- Define visibility of Data Products
- Clearly define group of Data Consumers per Data Product
- Invite users, tenants or 3<sup>rd</sup> party stakeholders
- Define who is able to ship and consume data with predefined context types



## Data Product

- Contains Views on top of data
- Provides metadata information
- Different delivery methods available



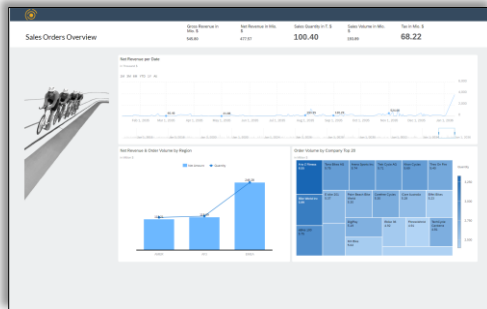
## License

- Manage accessibility of Data Products
- Leverage licenses in commercial set ups and/or for sensitive data

# Consumption in SAP Analytics Cloud and add-in for MS Office

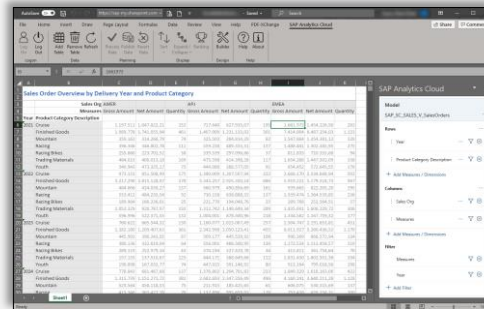
## Tight integration with SAP Analytics Cloud for analytics and planning

### SAP Analytics Cloud, analytics



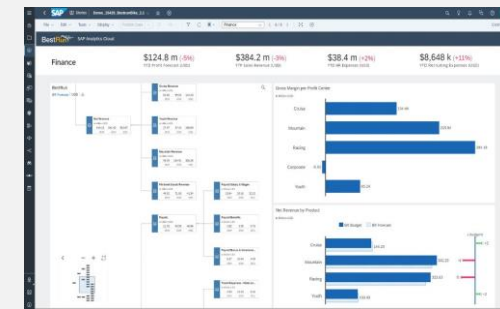
- Direct consumption of SAP Datasphere data models in SAP Analytics Cloud using a live connection
- Multiple SAP Datasphere tenants can be connected to any number of SAP Analytics Cloud systems

### Microsoft Office



- SAP Analytics Cloud, add-in for Microsoft Office 365 with live connection for online or desktop version
- SAP Datasphere with SAP Analysis for Microsoft Office 2.8 SP14+

### SAP Analytics Cloud, planning



- Bi-directional integration of SAP Datasphere and SAP Analytics Cloud for planning
- Use OData API to pull data from SAP Datasphere into planning
- Use data export service API to pull data into SAP Datasphere



# SAP DataspHERE

# Why SAP Datasphere



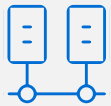
## Foundation for business data fabric

Comprehensive data service that enables every data professional to deliver seamless and scalable access to mission-critical business data.



## Connect to SAP data with business context

Out-of-the box understanding of SAP data with semantic business context from SAP applications using semantic onboarding and prebuilt business content data models.



## Connect and collect data from all sources

Data virtualization, replication, orchestration and distribution from and to SAP and external solutions across cloud and on-premises landscapes.



## Agile self-service data modelling

User empowerment with self-service analytical data modeling, governance and IT control. Enable users to connect their own data, share it securely, and run analytics without affecting other users.



## Space management & data sharing

Independent virtual work environments to foster collaboration and enable data sharing between IT, business units, and projects to connect global and local data.



## Reuse & extend SAP BW investments

Leverage SAP BW data structures, transformations, customizations, and skills to quickly extend your SAP BW investments to the public cloud using the SAP BW bridge or hybrid scenarios.



## Open interfaces and partner ecosystem

Hyperscaler choice with data centers in a variety of regions, open interfaces for data integration and consumption, and integration with industry-leading ecosystem of data and AI partners.



## Governance and metadata management

Ensure governance, metadata management and data lineage throughout the data lifecycle and across systems: discover, manage, and govern all data using the catalog.



## Integrated data marketplace

The data marketplace leverages trusted data partners and allows to securely share data across the organization with public, private and company-internal data products across tenants.

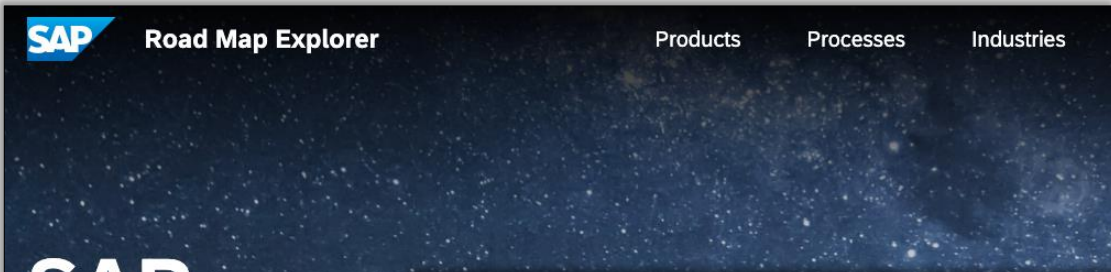


## Foundation for planning

Streamlining planning and analysis with reduced modelling efforts, while operating on a single source of truth for analytics and planning across the organization.



# SAP Road Map Explorer



## SAP Road Map

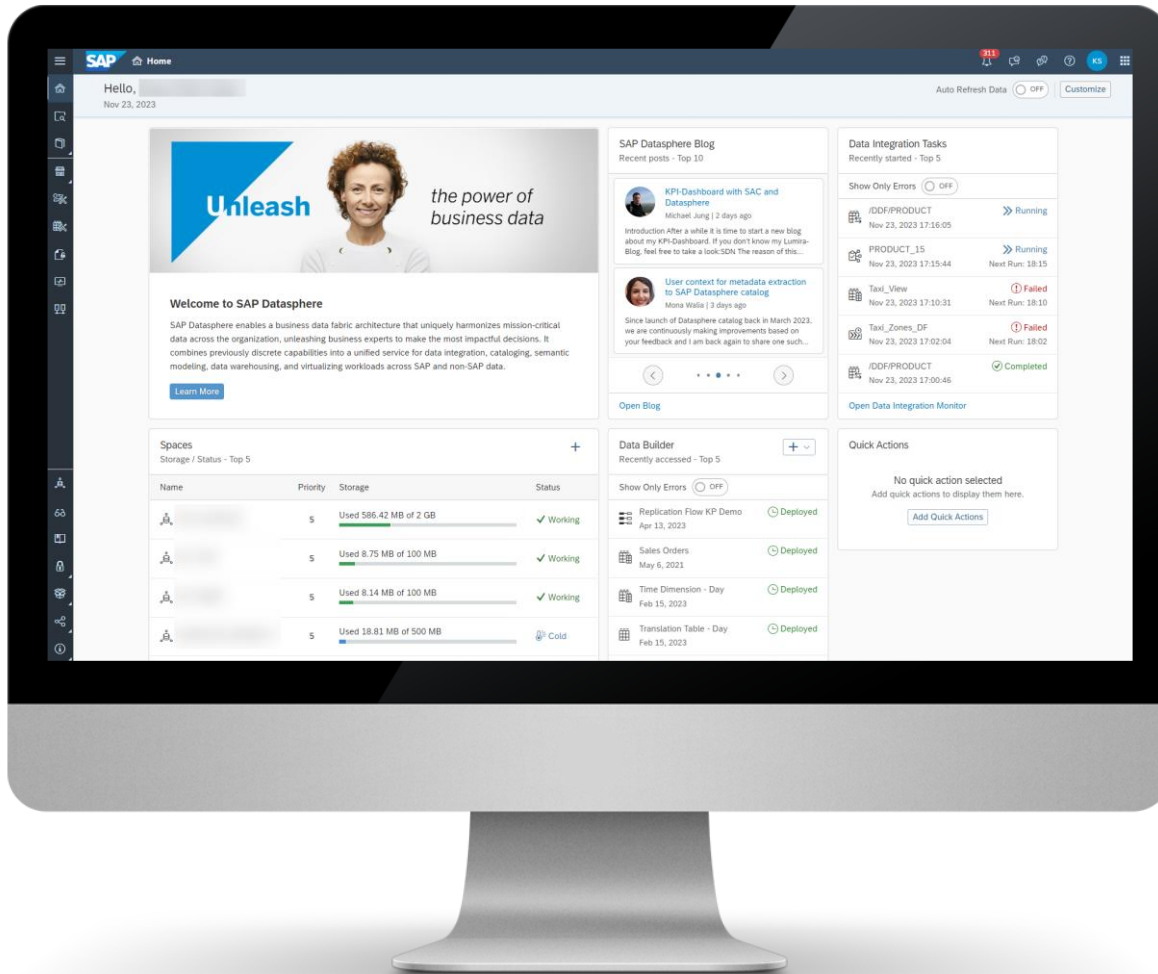
SAP Road Maps support the journey to Enterprise. Explore our road maps, webinars, and more.

Search SAP Road Maps by keywords, filters, and more.

Check the latest information on the [SAP ROAD MAP EXPLORER](#)

The screenshot displays the SAP Road Map Explorer interface. At the top, there are navigation tabs for 'Products', 'Processes', and 'Industries'. Below the navigation, there is a search bar and filters for 'Products' and 'Industries'. The main content area is a grid of road map items, organized by quarter and year. Each item includes a title, a brief description, and a star icon indicating its importance or status. The items are grouped into categories such as 'Administration and Service Management', 'Business Modeling', 'Business Warehouse Bridge', 'Data Cataloging', 'Data Center Availability', 'Data Integration', 'Data Marketplace', and 'Data Modeling'. The interface also shows a 'My Road Maps' section and a 'Disclaimer' link.

# More information



- Check out the product page on [sap.com](https://sap.com) and get access to a [guided experience trial](#) system
- Get started with [documents & videos](#)
- Use the [tutorials](#) and our [learning journey](#) to learn more
- Stay updated using the [release navigator](#)
- Join the [community](#) and check out the [best practices](#) recommendations
- Add your ideas and requests for new features on the [SAP Datasphere customer influence](#)
- Online Documentation on [SAP help](#)

# Thank you.

Contact information:

Florian Neukirch

Product Specialist  
Data Warehouse  
SAP HANA Database & Analytics

Join me on [LinkedIn](#)

