

ABACO

CONSULTORES

We deliver!

Porto

Lisboa

São Paulo

London

Genève

Our Locations

■ Ábaco Offices:



London, United Kingdom



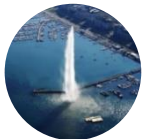
Porto, Portugal



Lisboa, Portugal

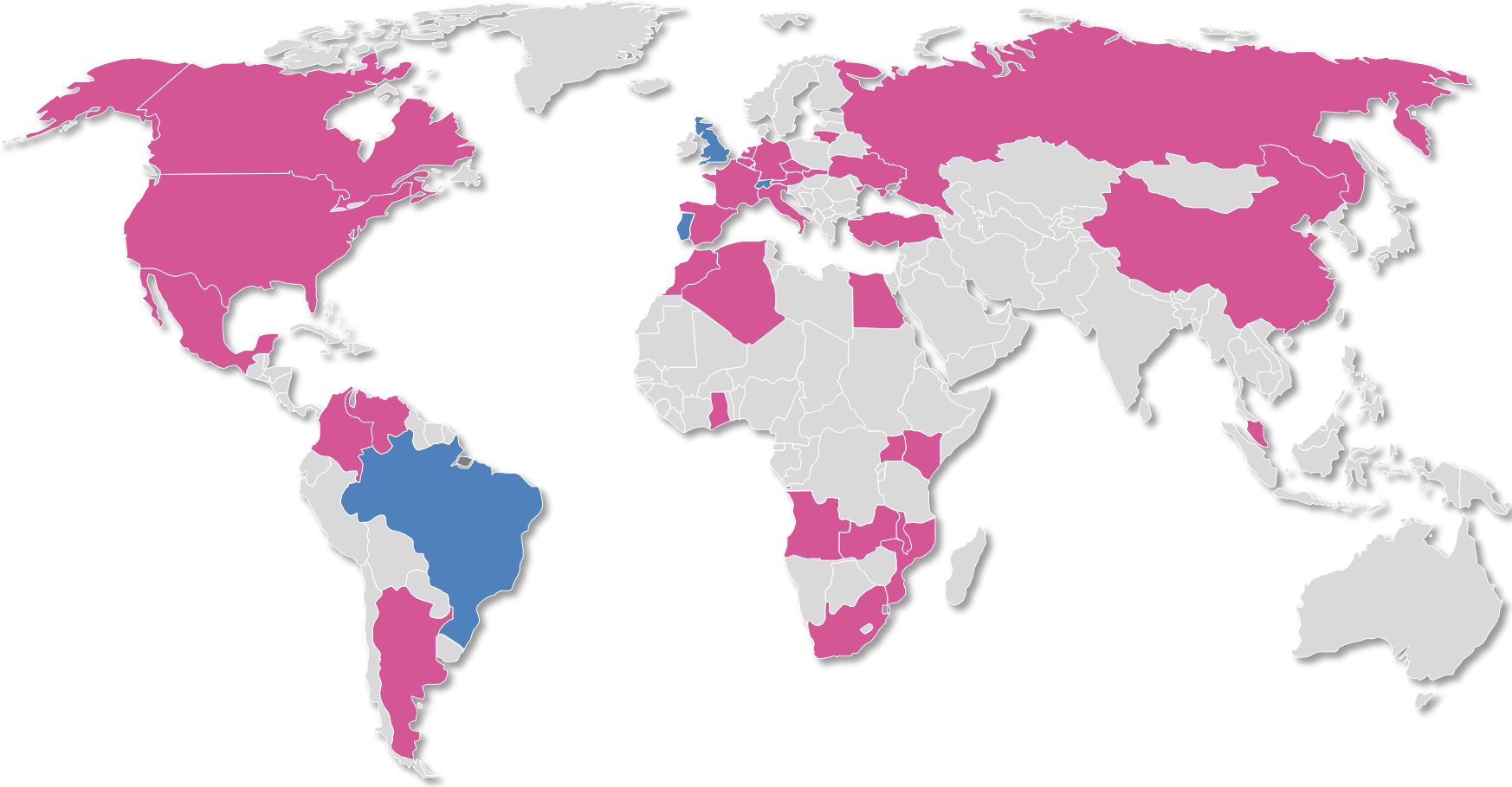


S. Paulo, Brazil

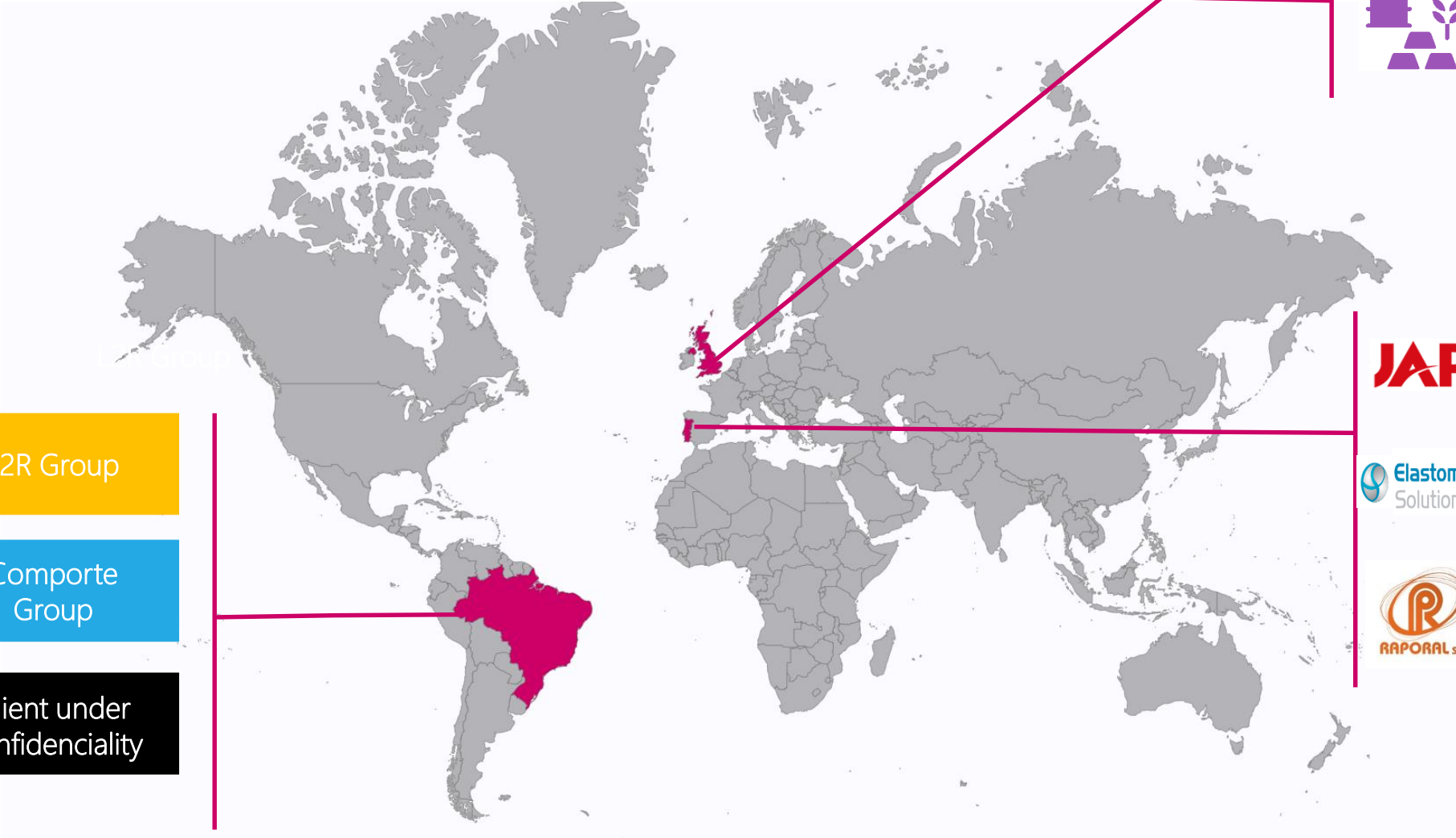


Genève, Switzerland

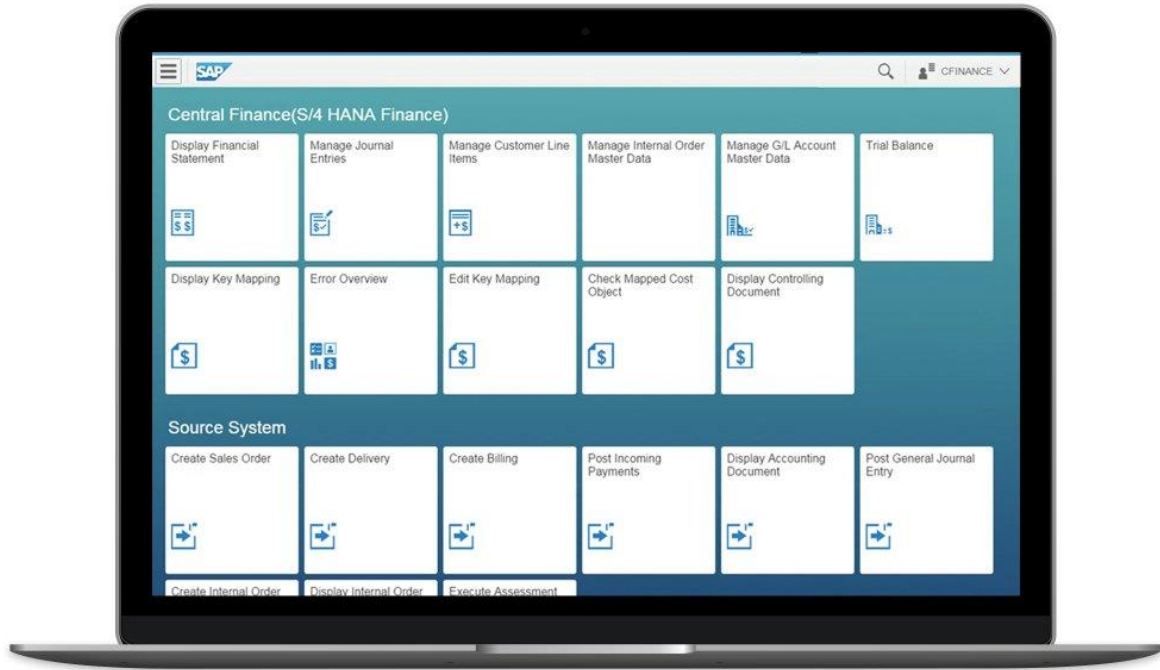
■ International Projects



Our S/4 HANA® References

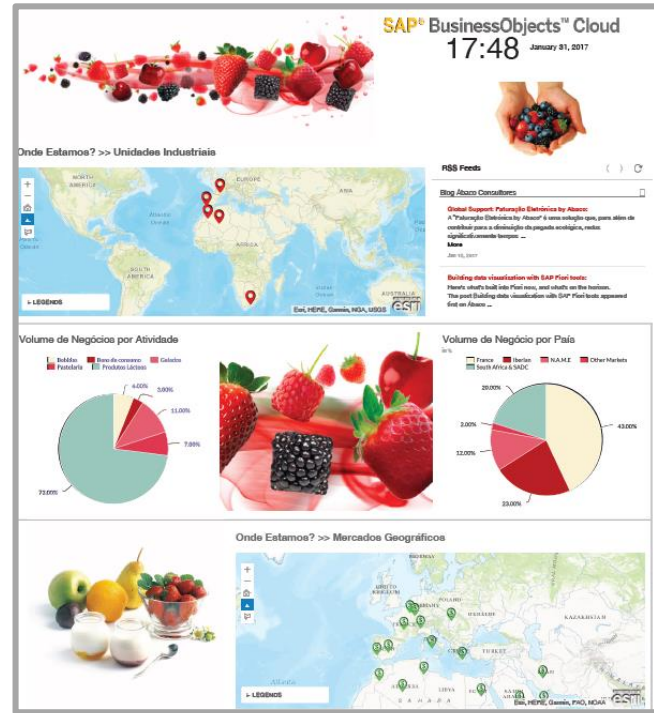


Some history...

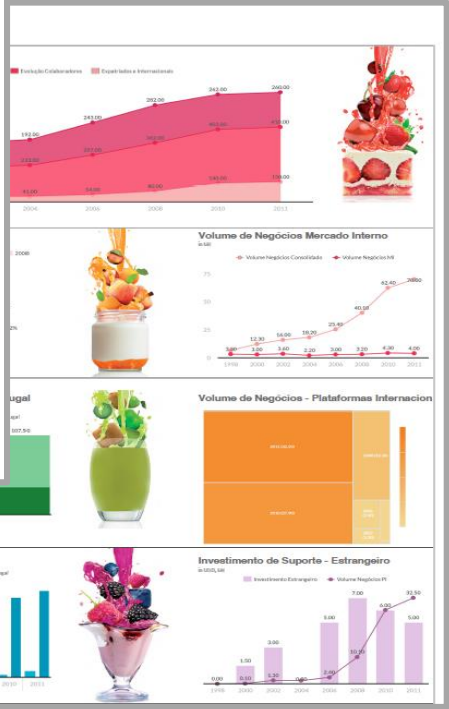


SAP S/4 HANA 1503

2015

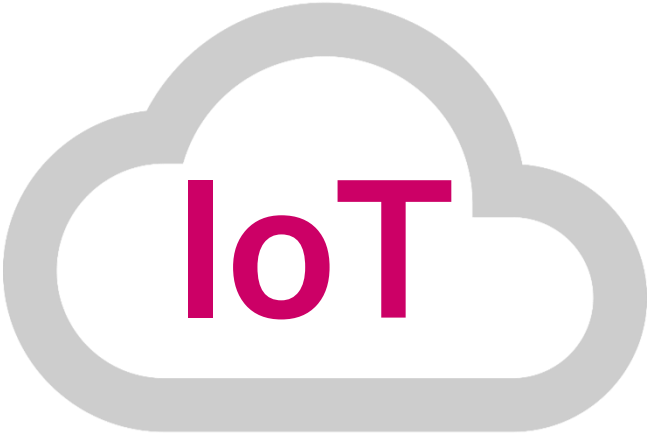


2016



SAP BusinessObjects Cloud

And for today...



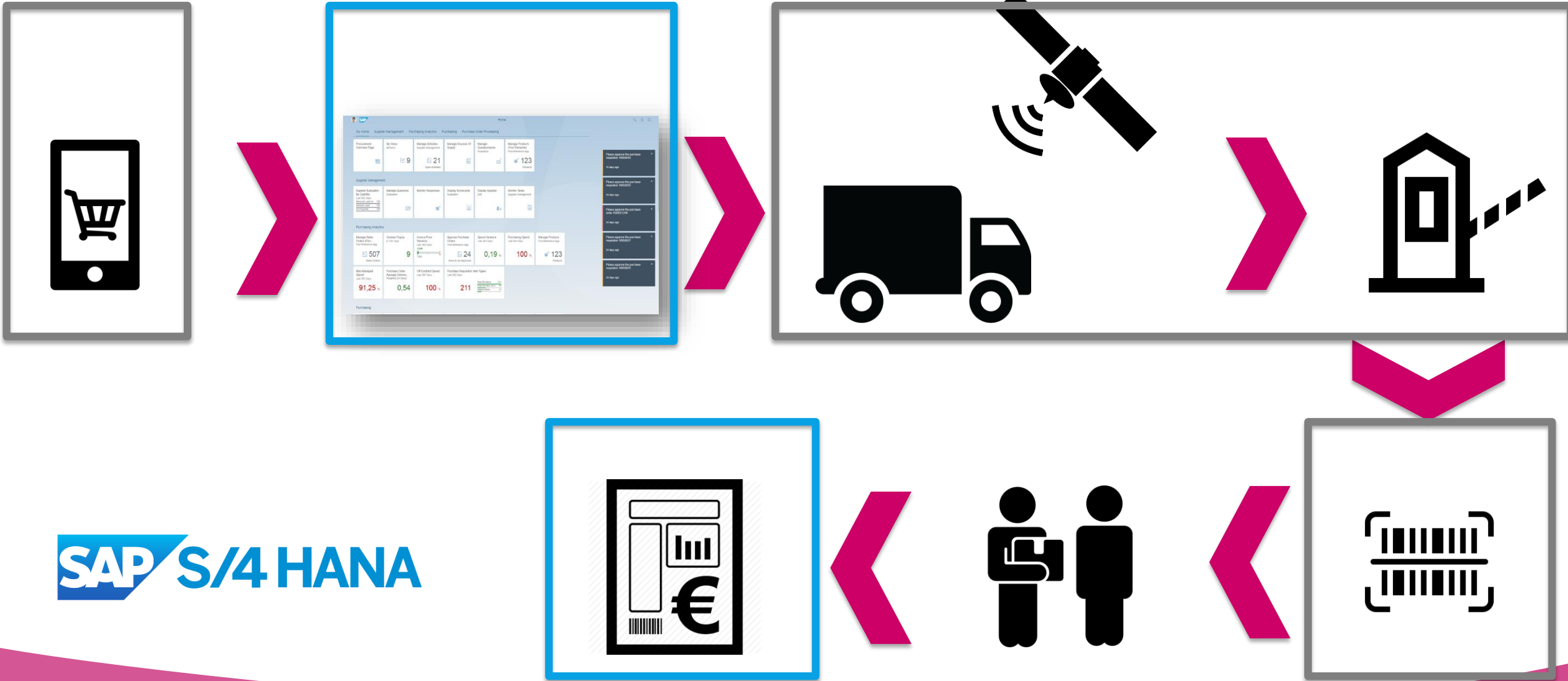
SAP S/4 HANA 1610



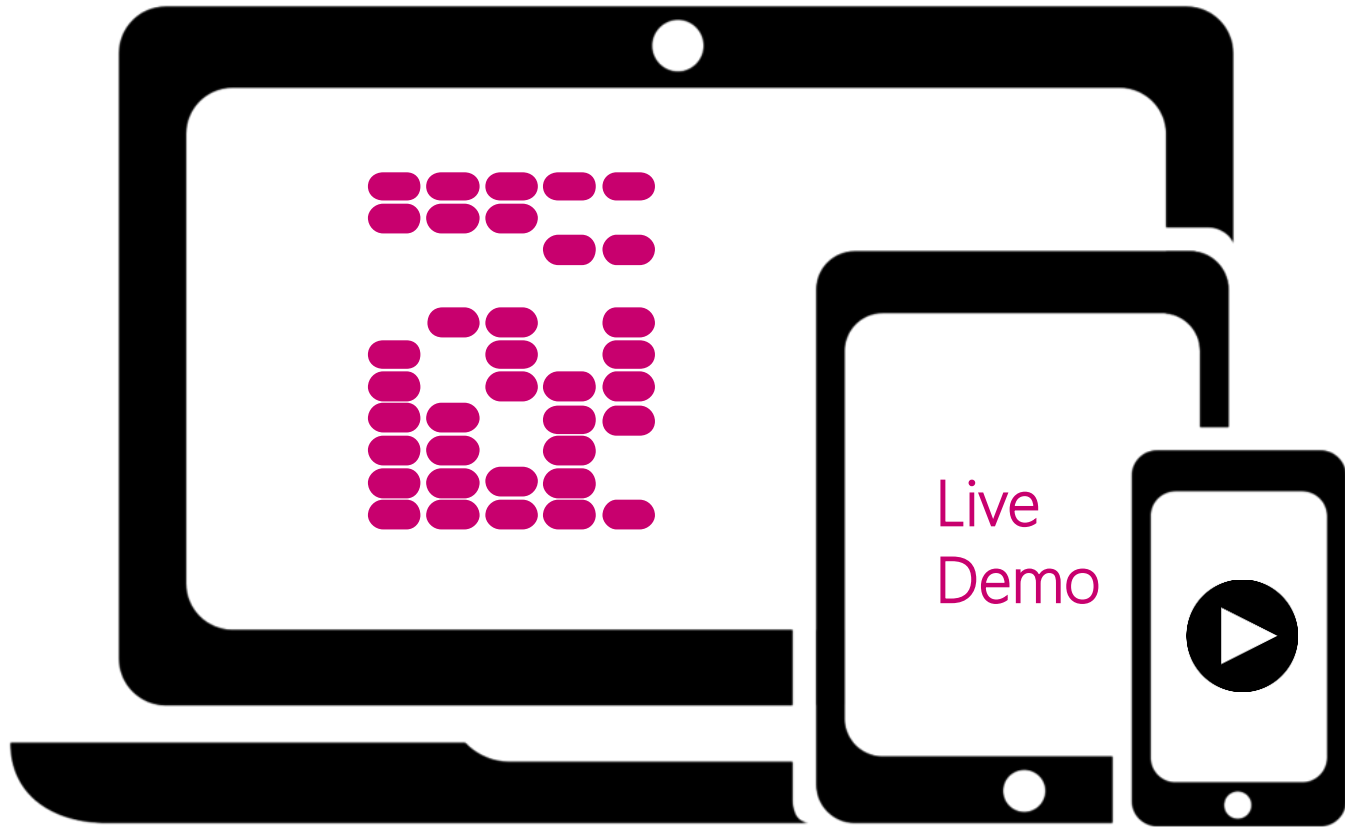
The screenshot displays the SAP S/4 HANA 1610 user interface for a user named Sarah Jones. The interface is divided into several sections:

- Header:** User profile (Sarah Jones), navigation tabs (My Home, Supplier Management, Purchasing Analytics, Purchasing, Purchase Order Processing), and utility icons (App Finder, Settings, Edit Home Page).
- Dashboard:** A grid of cards providing key metrics:
 - Procurement Overview Page
 - My Inbox: 9 items
 - Manage Activities: 21 Open Activities
 - Manage Sources Of Supply
 - Manage Questionnaires Evaluation
 - Manage Products (For Elements): 123 Products
- Supplier Management:** Cards for Supplier Evaluation, Manage Questions Evaluation, Monitor Responses, Display Scorecards Evaluation, Display Supplier List, and Monitor Tasks Supplier Management.
- Purchasing Analytics:** Cards for Manage Sales Orders (507), Contract Equity (9), Invoice Price Variance (100%), Approve Purchase Orders (24 items to be approved), Spend Variance (0,19%), Purchasing Spend (100%), and Manage Products (123 Products).
- Bottom Row:** Cards for Non-Managed Spend (91,25%), Purchase Order Average Delivery (0,54), OR-Contract Spend (100%), and Purchase Requisition Item Types (211).
- Task List:** A vertical list of approval tasks on the right side, such as "Please approve the purchase requisition 10058949" and "Please approve the purchase requisition 10058928".

Proof of Concept – IoT + S/4 HANA



SAP S/4 HANA



ABACCO

Video replay of the demoed process can be obtained upon request: labs@abaco-consultores.com

PORTUGAL

Phone: +351 226 007 678

PORTO

Aviz Trade Center - Rua Eng. Ferreira Dias, nº 924, E11
4100-1246, Porto

LISBOA

Pólo Tecnológico de Lisboa, Edifício EE3, Sala 107, Estrada do Paço do Lumiar, 1600-
546, Lisboa

BRAZIL

Phone: +55 (11) 3044 2472

São Paulo

Rua Funchal, no. 411 Conj. 123 Edifício Funchal, Vila Olímpia
04551-060 – São Paulo – SP

UNITED KINGDOM

London

16 Great Queen Street, Covent Garden,
WC2B- 5AH London

SWITZERLAND

Genève

Rue Voltaire 16
1201 Genève



ABACO
CONSULTORES

