



# Design to Operate: Connect Digitally to Perfect Reality

iENT100

PUBLIC

# Speakers

## Las Vegas

September 24–27, 2019

---

Sandy Markin

## Barcelona

October 8-10, 2019

---

Harald Müller

## Bangalore

November 13-15, 2019

---

Harald Müller



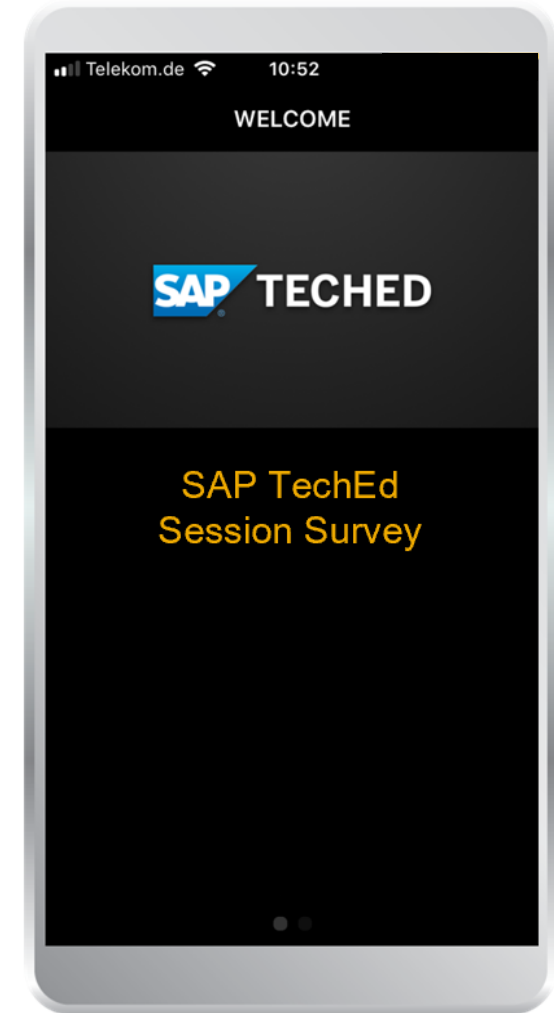
## Take the **session survey**.

We want to hear from you!

Complete the session evaluation for this session **iENT100** on the SAP TechEd mobile app.



Download the app from  
iPhone App Store or Google Play.



# Disclaimer

The information in this presentation is confidential and proprietary to SAP and may not be disclosed without the permission of SAP. Except for your obligation to protect confidential information, this presentation is not subject to your license agreement or any other service or subscription agreement with SAP. SAP has no obligation to pursue any course of business outlined in this presentation or any related document, or to develop or release any functionality mentioned therein.

This presentation, or any related document and SAP's strategy and possible future developments, products and or platforms directions and functionality are all subject to change and may be changed by SAP at any time for any reason without notice. The information in this presentation is not a commitment, promise or legal obligation to deliver any material, code or functionality. This presentation is provided without a warranty of any kind, either express or implied, including but not limited to, the implied warranties of merchantability, fitness for a particular purpose, or non-infringement. This presentation is for informational purposes and may not be incorporated into a contract. SAP assumes no responsibility for errors or omissions in this presentation, except if such damages were caused by SAP's intentional or gross negligence.

All forward-looking statements are subject to various risks and uncertainties that could cause actual results to differ materially from expectations. Readers are cautioned not to place undue reliance on these forward-looking statements, which speak only as of their dates, and they should not be relied upon in making purchasing decisions.



# Agenda

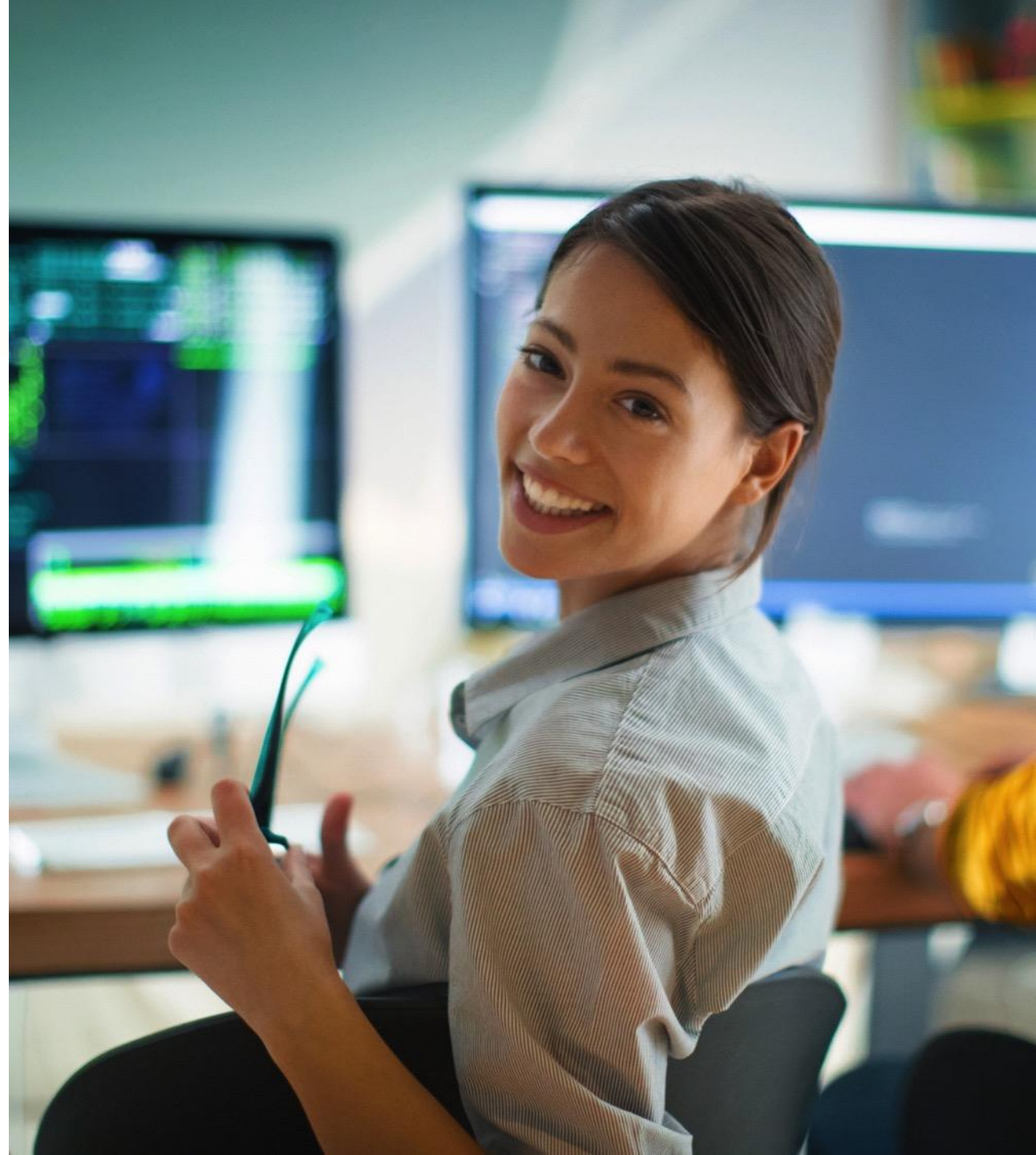
## Intelligent Enterprise Framework

### Design to Operate

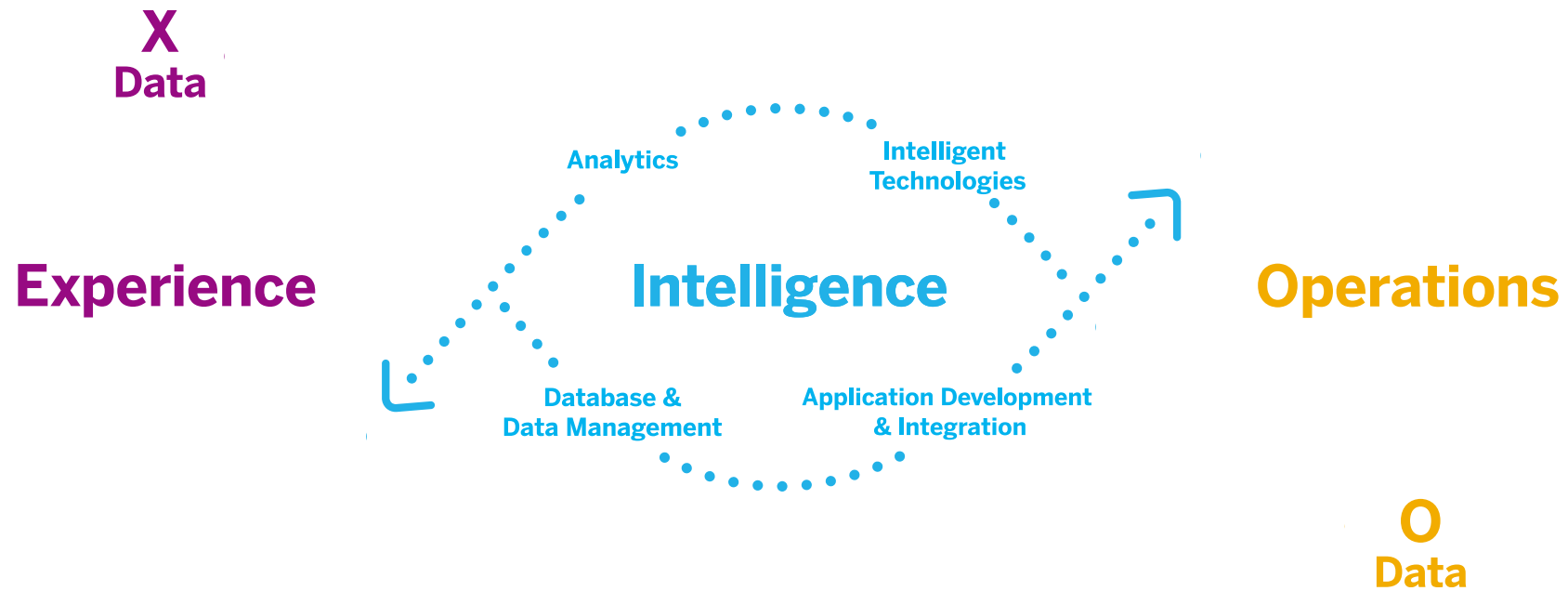
- Overview
- Technology Highlights

### Key Take Aways

### Q&A

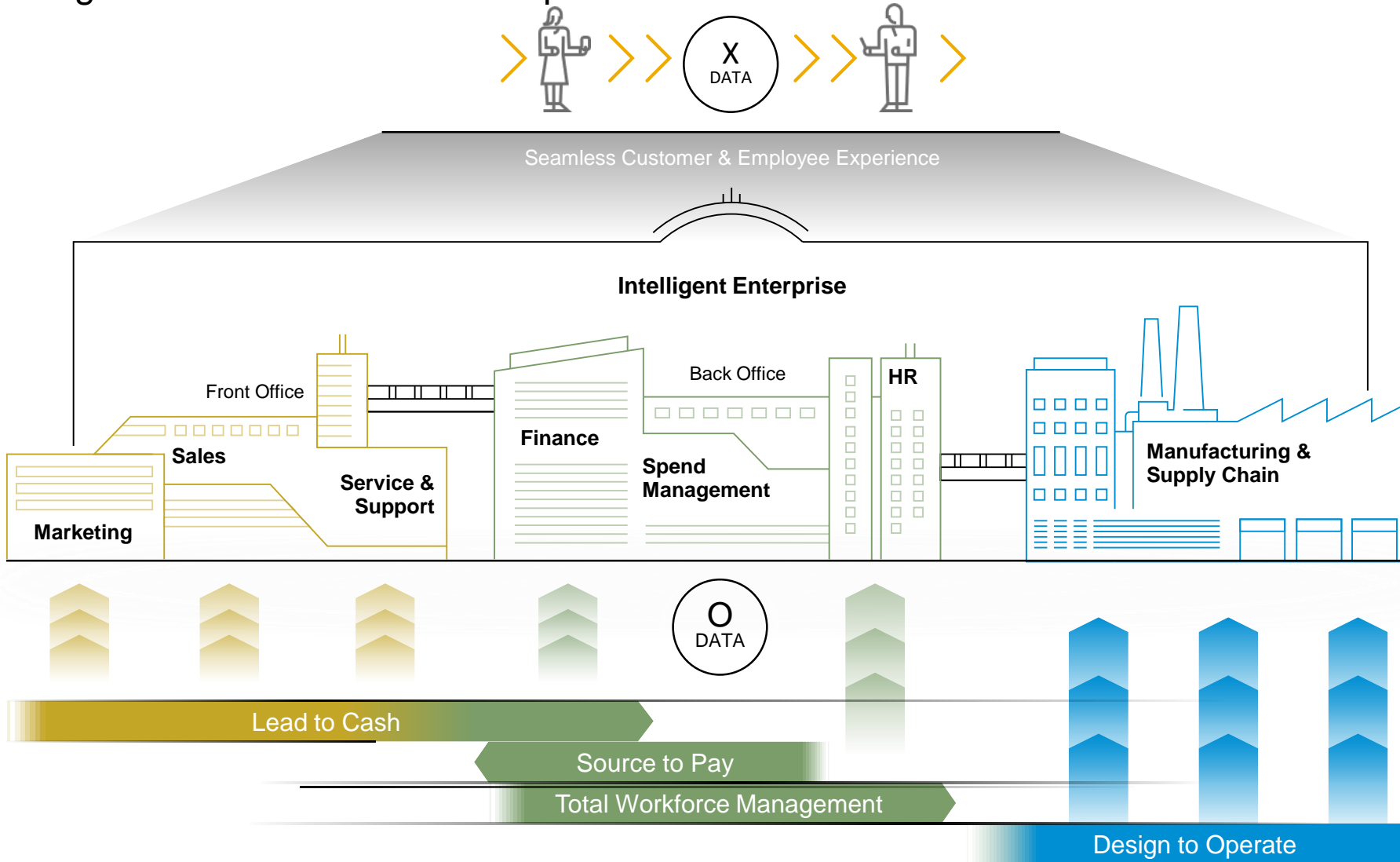


# Intelligent Enterprise



# The Intelligent Enterprise

Integrated end-to-end business processes for the entire value chain



- Complete E2E processes across the entire value chain
- Focused execution along four key E2E processes
- Seamless experience based on standardized technologies

# Agenda

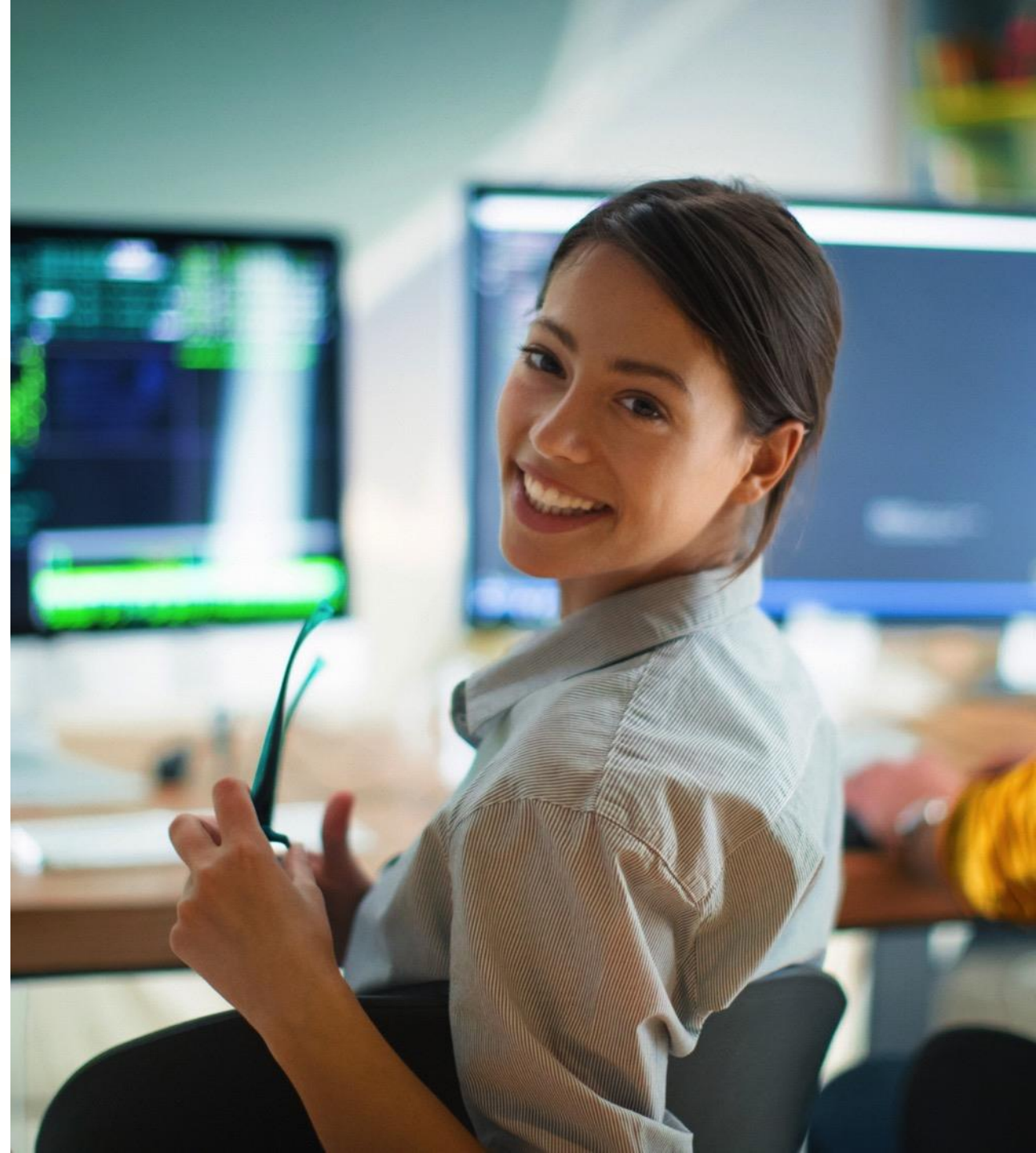
## Intelligent Enterprise Framework

### Design to Operate

- Overview
- Technology Highlights

### Key Take Aways

### Q&A





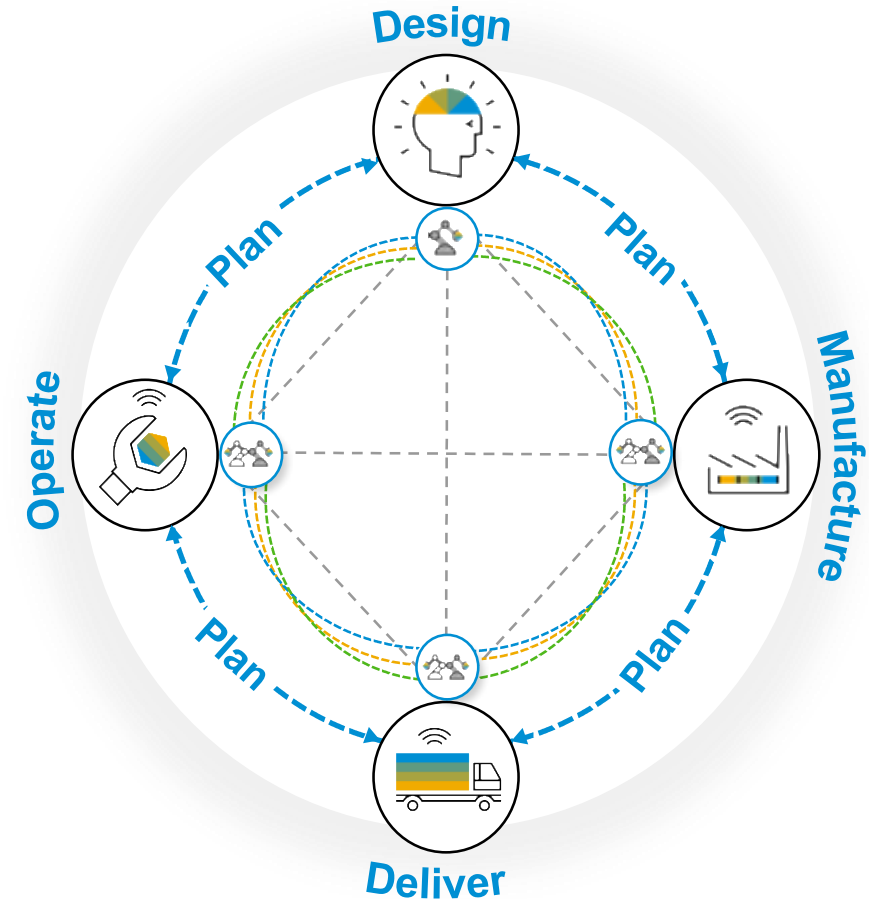
# Design to Operate

SAP's Digital Supply Chain **in the Intelligent Enterprise**

## Design to Operate

SAP's supply chain solutions connect your entire supply chain, so you can deliver at your best, today, while you adapt and continuously improve to reshape how you deliver tomorrow.

You get total visibility as products are designed, delivered and deployed by connecting your business processes with real-time data from assets, equipment, customers and suppliers.



# Design to Operate: End to end business process flow

## Design

Receive customer feedback – define **requirements** and **system concept** for new/changed product.



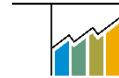
Create **product design**, **early cost estimates** and master data for new/changed product.



**Hand over** to manufacturing and service to manage BOM and routing.

## Plan

Plan **demand** for new / changed components.



Plan **supply** for new/changed components.

Create master **production schedule**.

## Procure

Procure **components** to build subassemblies



**Manage and track** inbound delivery.

**Receive** procured components into warehouse.



## Manufacture (subassemblies)

**Schedule** subassembly production.



**Produce** subassemblies and track progress.



**Receive** subassemblies into warehouse.



## Sell

## Manufacture (finished product)

## Deliver

Receive customer **sales order**. (**assemble to order**)

**Schedule** finished product production.



**Produce** finished product and track progress.

**Register** serialized finished product.



**Receive** finished product into warehouse.



Plan transport, pick, pack, and load product for **delivery**.



Perform and track **outbound transportation** and receive proof of delivery.

## Operate

Receive asset master data and **onboard** asset.

**Monitor** assets with IoT data, perform analysis, **predict** asset failure.

**Plan** asset maintenance.



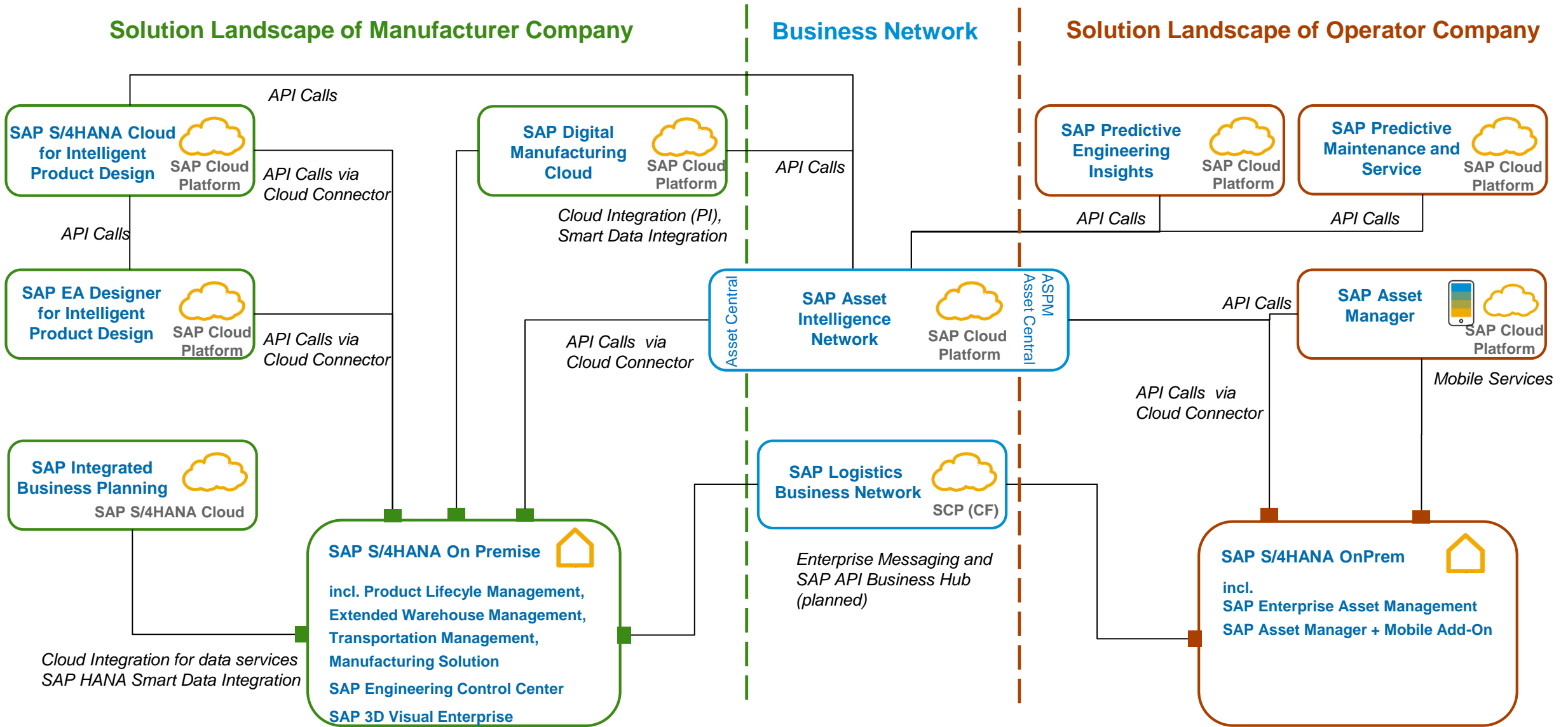
Perform inspection, **maintenance**, and repair.

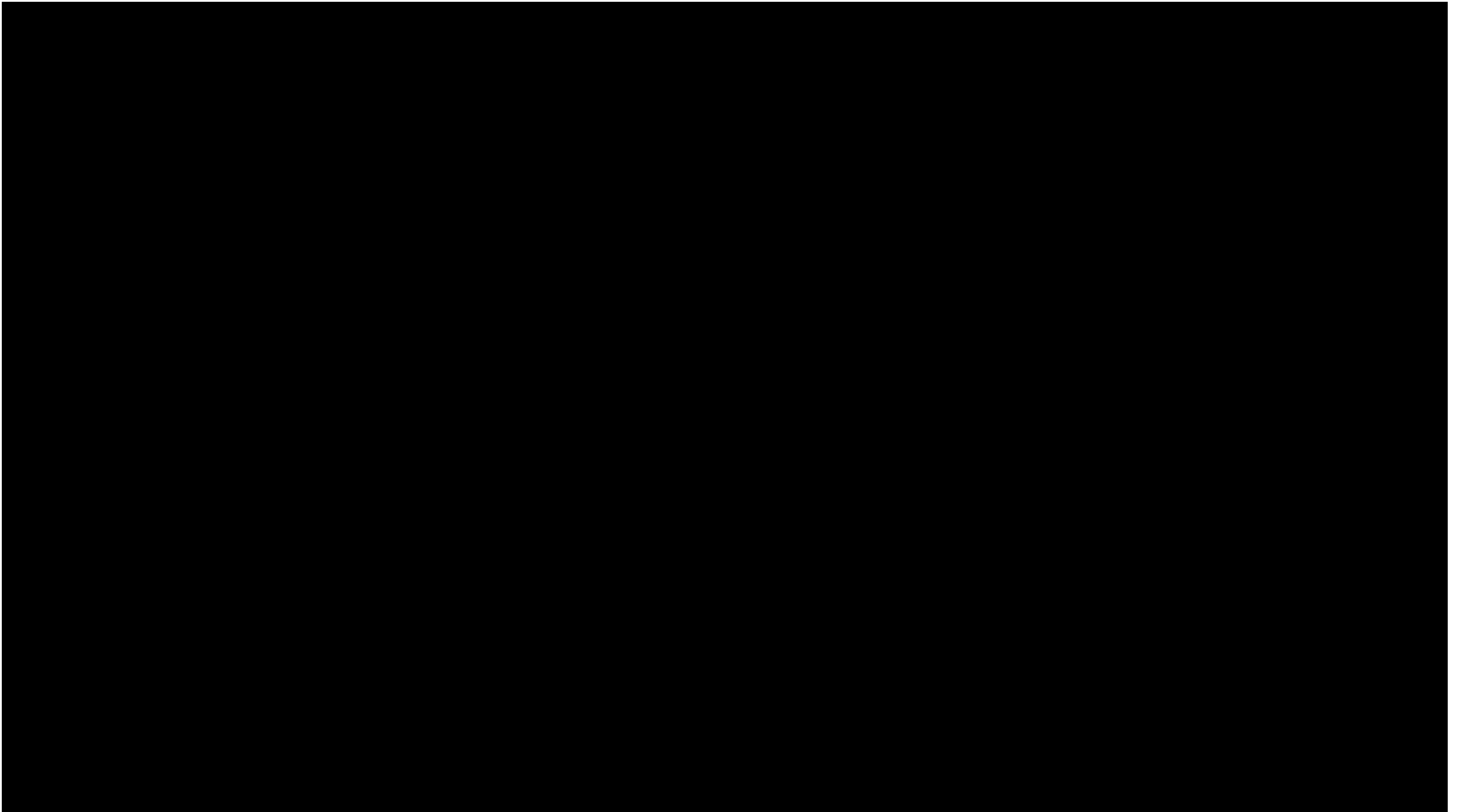


Request **product improvement**

Decommission on asset.

# Design to Operate: Landscape topology & integration





# Agenda

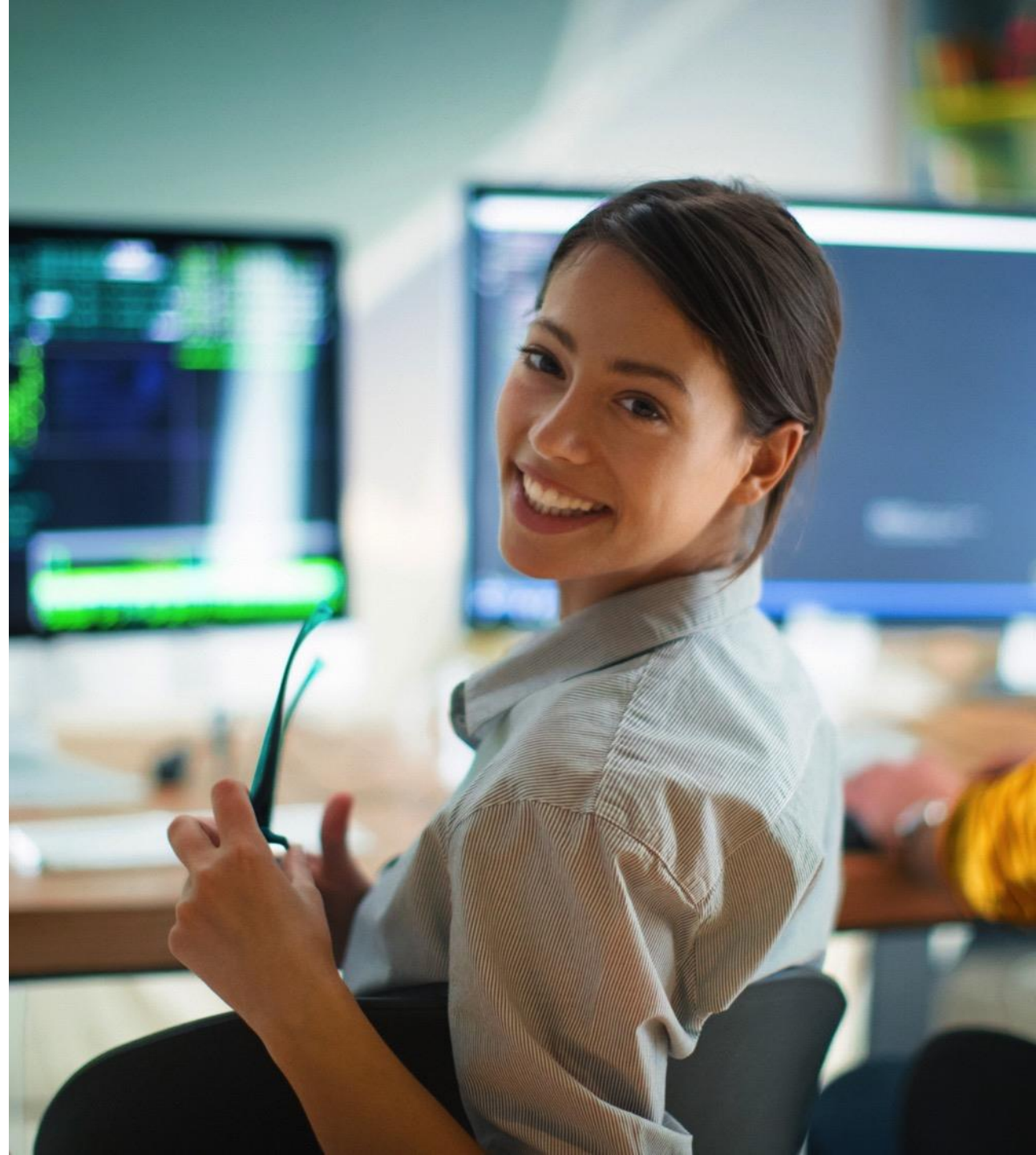
Intelligent Enterprise Framework

Design to Operate

- Overview
- Technology Highlights

Key Take Aways

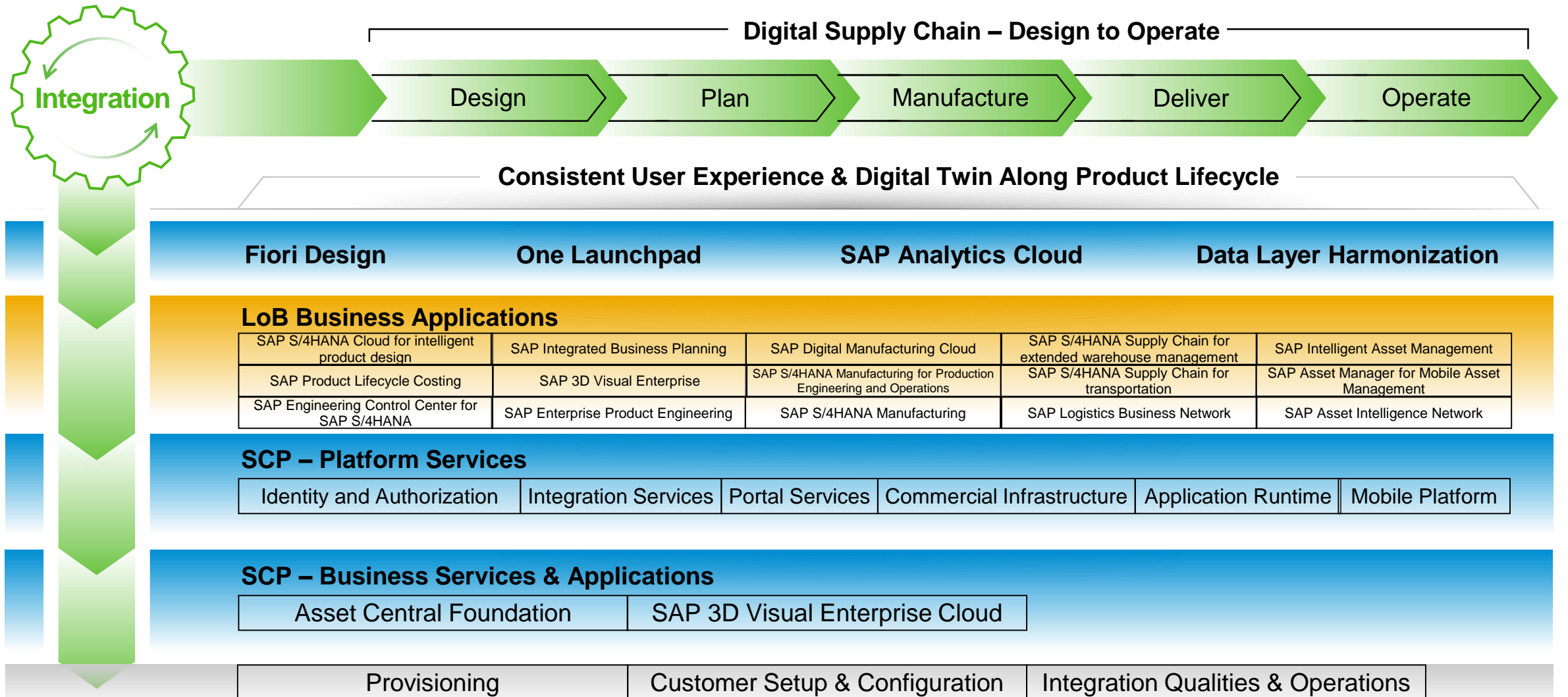
Q&A





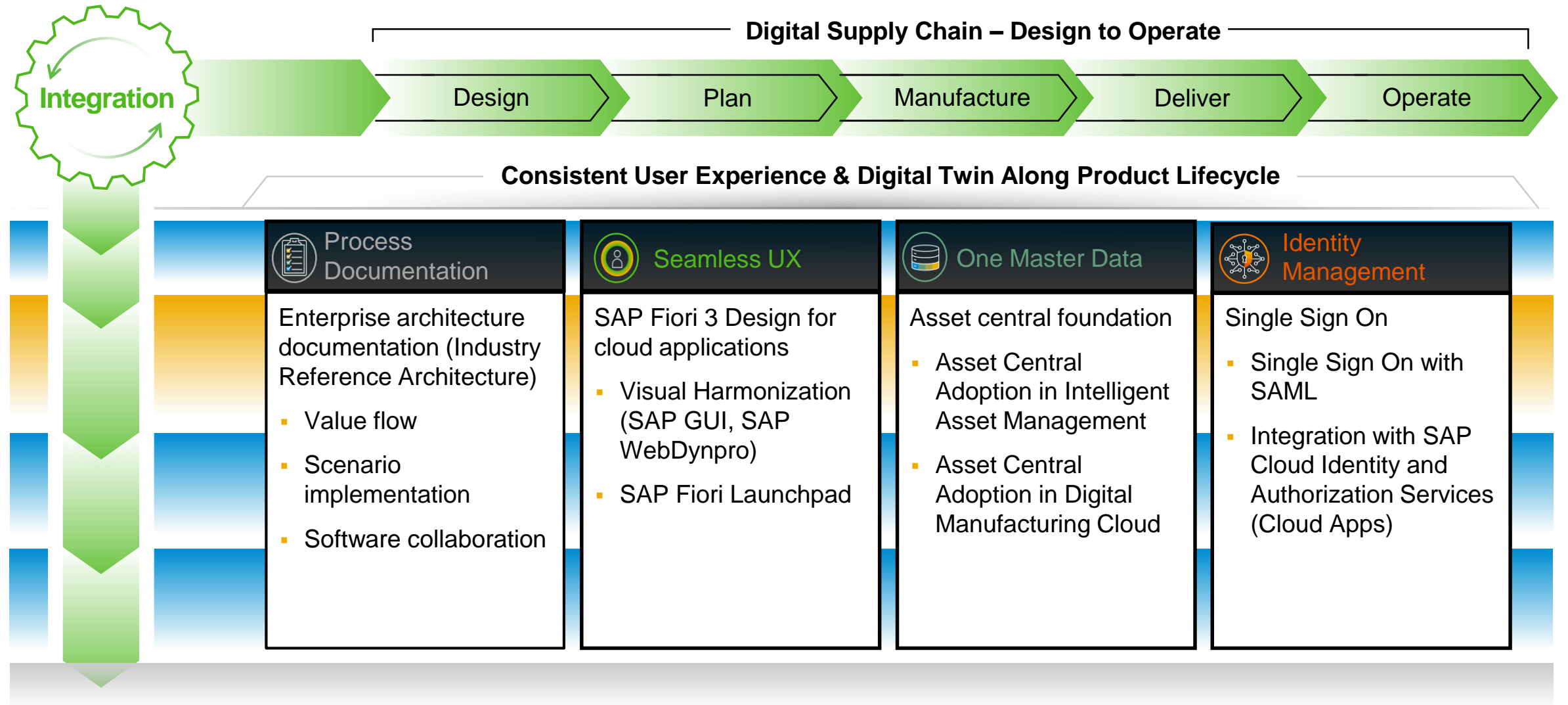
# From integration to integrated business processes

Illustrative high-level view for Design to Operate



# From integration to integrated business processes

Illustrative high-level view for Design to Operate



# Design to Operate: Technology highlights

## Process documentation: EA Models (in preparation)

### Challenge



No clear understanding of which solutions are required to become an Intelligent Enterprise.

Limited visibility on target state of enterprise architecture and roadmaps.

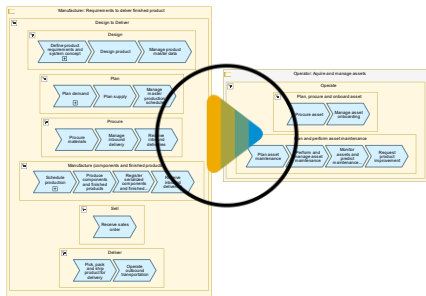
### Solution



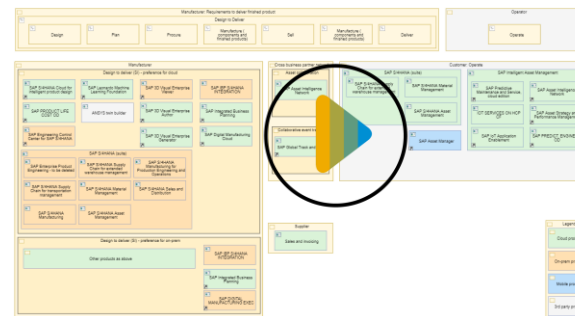
Reference architectures enable you to:

- Explore how E2E scenarios decompose into applications, modules, business services, technologies and integrations.
- Map out the roadmap to adopt the solution and transition from current solution landscape to target.
- Implement E2E scenarios which are connected with runtime artifacts

### Value Flow



### Scenario Implementation

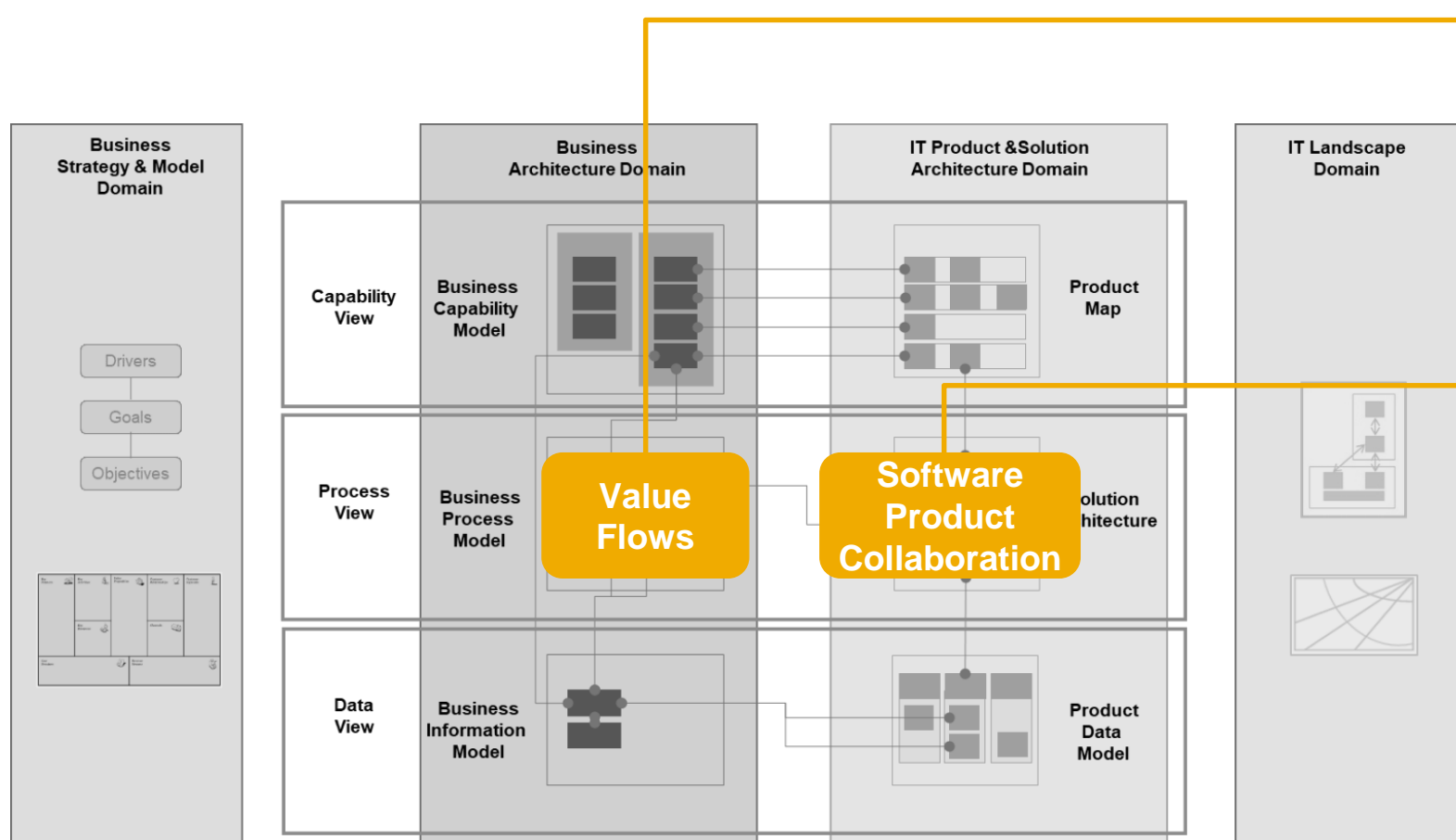


### Software Collaboration



# Reference Architecture

Example: SAP delivered models at SAP API Business Hub



- Simple visualization how value is regularly created in an enterprise
- Agreement on scope definition and common language (from a pure business perspective)
- Describe how the software products collaborate with each other to support a value flow
- To define and evaluate the integration, to locate gaps and requirements
- Link to run-time relevant artifacts like APIs, Integration Flows ...

# Design to Operate: Technology highlights

Seamless user experience (UX)

**UX harmonization**  
along End-to-end processes



## **SAP UX methodology**

Harmonized roles, UX design process

## **SAP Fiori Launchpad**

Local Launchpad Platform in ABAP and SAP Cloud Platform

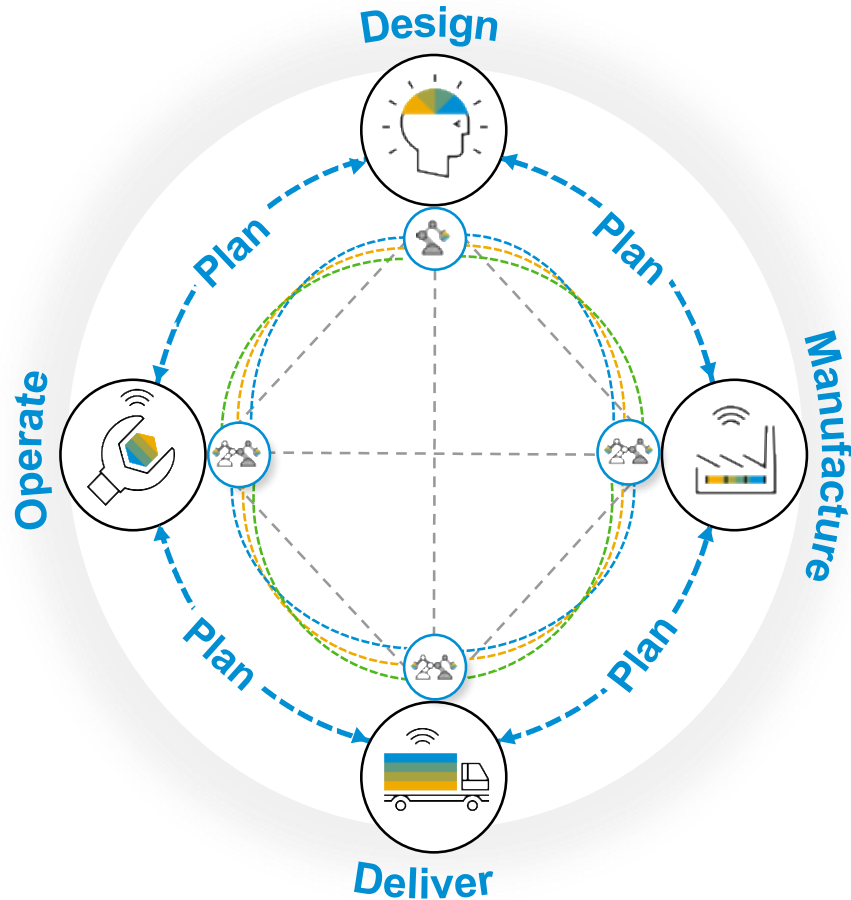
## **SAP Fiori design (Cloud first) & visual harmonization**

Visual harmonization: SAP GUI + SAP Web Dynpro



# Design to Operate: Technology highlights

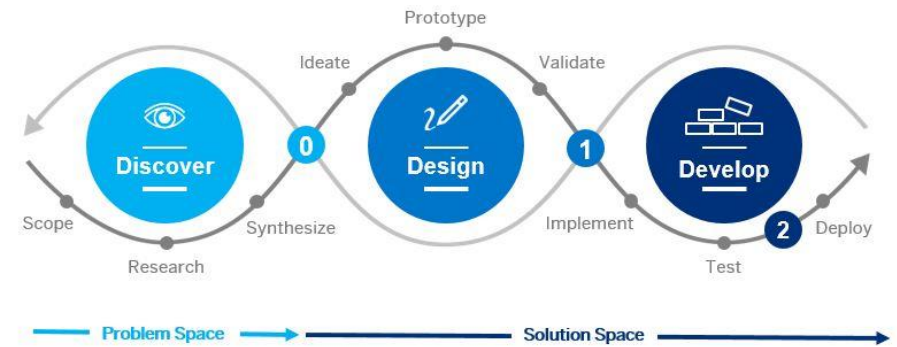
## Seamless UX: UX Methodology



## Harmonized Roles with Personas

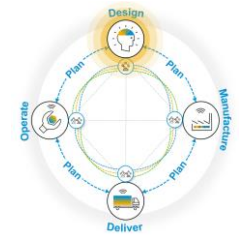


## Design Process



# Design to Operate: Seamless User Experience

## Design: SAP Intelligent Product Design



### Design

Receive customer feedback – define **requirements** and **system concept** for new/changed product.

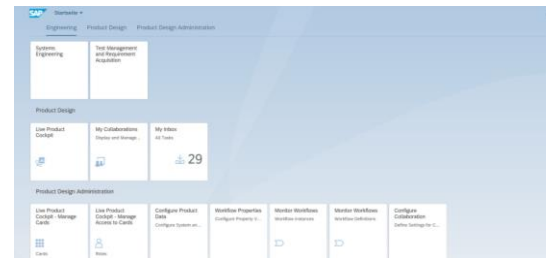


Create **product design**, **early cost estimates** and master data for new/changed product.

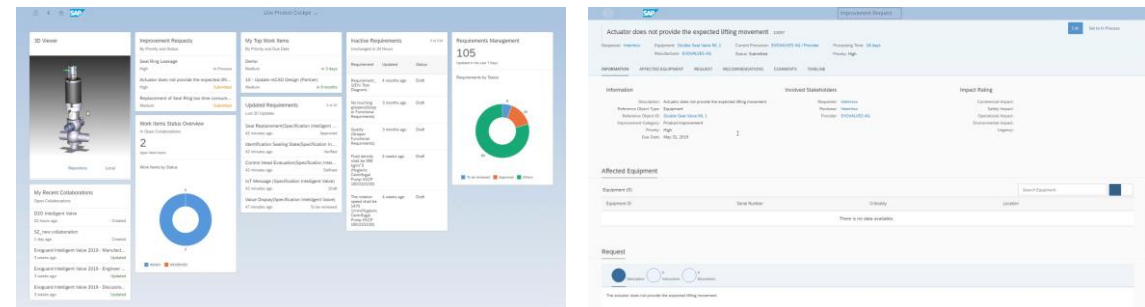


Hand over to manufacturing and service to manage BOM and routing.

### Seamless UX: Fiori Launch Pad



### Seamless UX: Fiori Design



### Seamless UX: Cross Product Navigation



SAP Intelligent Product Design → SAP S/4HANA R&D Engineering

## Persona: Product Manager

BUSINESS ROLE ID:  
**R0111**

BUSINESS ROLE NAME:  
**PRODUCT MANAGER**

DEVELOPMENT AREA:  
**DESIGN**



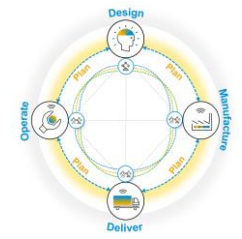
### COMPETENCIES

- Casual User ——— Power User
- Proactive ——— Reactive
- Team Worker ——— Lone Fighter
- Global Focus ——— Local Focus
- Innovative ——— Conservative

*“I would like to create the next game changing product or product upgrade which shall disrupt the market and increase our revenue and market share . However I still have to keep budget constraints in mind and be in line with our existing product offerings so that I don’t cannibalize market share.”*

# Design to Operate: Seamless User Experience

## Plan: SAP Integrated Business Planning



### Plan

Plan **demand** for new and changed products.



Plan **supply** for new and changed products.



Analyze plans and collaborate with suppliers.

## Persona: Supply Chain Planner

BUSINESS ROLE ID:  
**R0054G**

BUSINESS ROLE NAME:  
**DEMAND PLANNER**

DEVELOPMENT AREA:  
**DSC / SUPPLY CHAIN PLANNING - IBP**

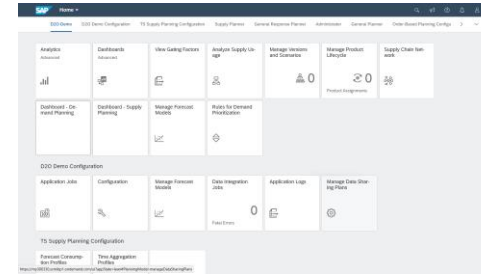


### COMPETENCIES

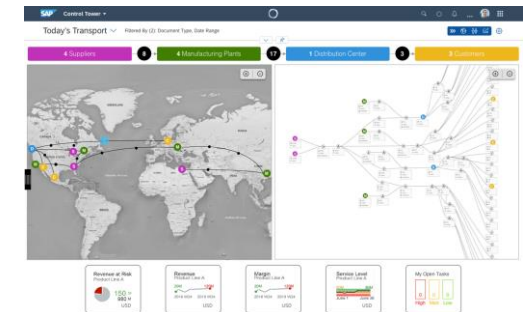
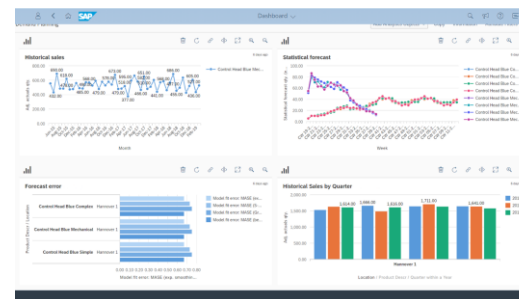


*"I need real-time information about new products to ensure a more accurate forecast and excellent customer service."*

### Seamless UX: Fiori Launch Pad



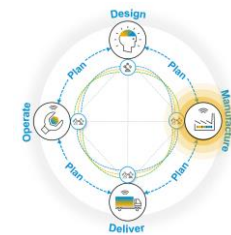
### Seamless UX: Fiori Design



### Intelligence built into the Business Process



- State-of-art business processes**  
Leverage SAP solutions to enable new end-to-end business processes, new business models and new revenue streams
- Synchronized planning processes**  
Break down planning silos through connected and integrated planning processes
- Leverage end-to-end visibility**  
End-to-end visibility on strategic, tactical and operational level and across siloed or external data
- Faster planning cycles**  
React faster to changes in the business through complete integration



# Design to Operate: Seamless User Experience

## Manufacture: SAP Digital Manufacturing Cloud

### Manufacture

Schedule production.



Produce subassemblies and track progress.



Receive subassemblies into warehouse



## Persona: Production Supervisor

BUSINESS ROLE ID:  
**R0115**  
  
BUSINESS ROLE NAME:  
**PRODUCTION SUPERVISOR**  
  
DEVELOPMENT AREA:  
**DIGITAL MANUFACTURING**

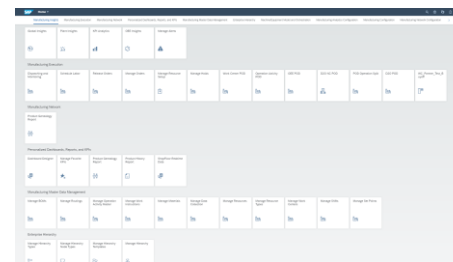


### COMPETENCIES

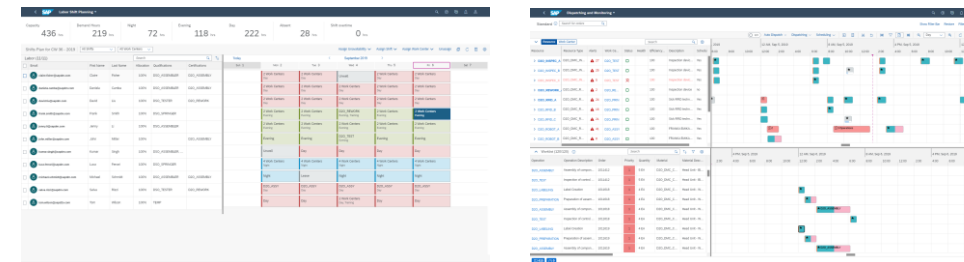
- |              |   |              |
|--------------|---|--------------|
| Power User   | ○ | Casual User  |
| Proactive    | ○ | Reactive     |
| Team Worker  | ○ | Lone Fighter |
| Global Focus | ○ | Local Focus  |
| Innovative   | ○ | Conservative |

*"I would like to spend less time interacting with the system because I would like to focus on actual production"*

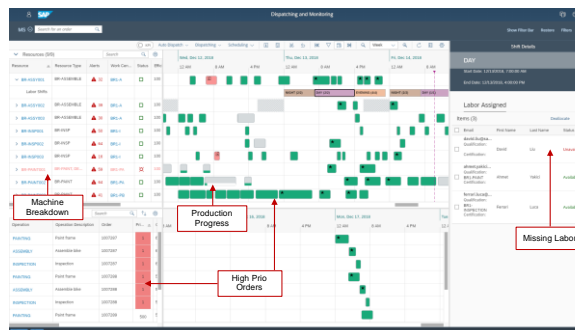
### Seamless UX: Fiori Launch Pad



### Seamless UX: Fiori Design



### Intelligence and Analytics



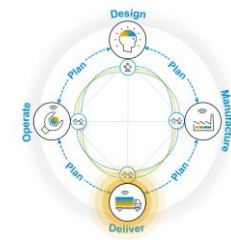
### Visibility

- Labor Data
- Production Data
- Machine Status
- Maintenance Schedule

### Intelligence

- Scheduling using Heuristics





# Design to Operate: Seamless User Experience

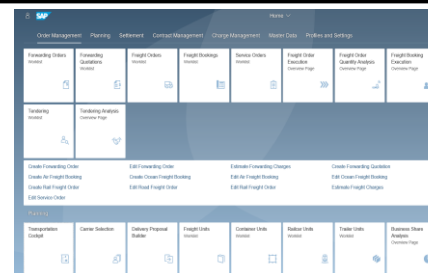
## Deliver: SAP S/4HANA Supply Chain for transportation management

Deliver

Plan transport, pick, pack, and load product for delivery.

Perform and track **outbound transportation** and receive proof of delivery.

### Seamless UX: Fiori Launch Pad



### Seamless UX: Visual Harmonization (enabled by technology)

## Persona: Transportation Planner

BUSINESS ROLE ID:  
R0165Q

BUSINESS ROLE NAME:  
TRANSPORTATION  
PLANNER

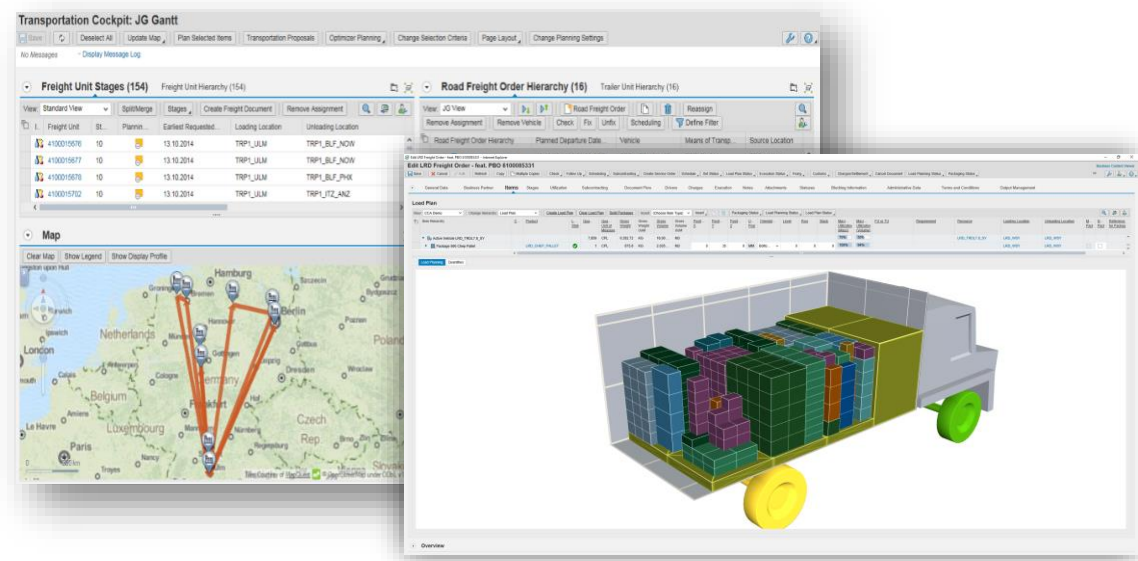
DEVELOPMENT AREA:  
DSC / SUPPLY CHAIN  
EXECUTION -  
TM



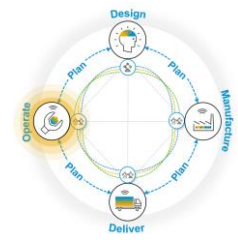
### COMPETENCIES

- Power User  Casual User
- Proactive  Reactive
- Team Worker  Lone Fighter
- Global Focus  Local Focus
- Innovative  Conservative

“Good Plan. Less Stress!”







# Design to Operate: Seamless User Experience

## Operate: SAP Asset Manager

Operate

Seamless UX: Fiori on iOS

Receive asset master data and **onboard** asset.

**Monitor** assets with IoT data, perform analysis, **predict** asset failure.

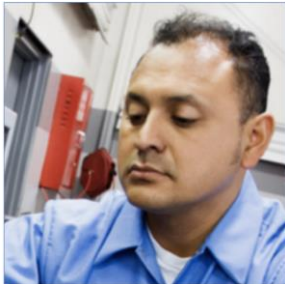
...

## Persona: Maintenance Worker

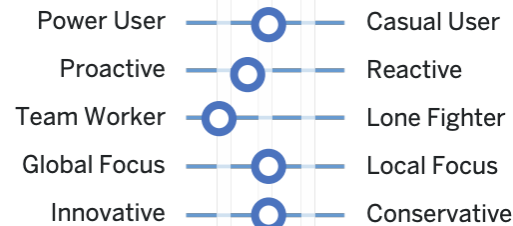
BUSINESS ROLE ID:  
R0090

BUSINESS ROLE NAME:  
MAINTENANCE  
TECHNICIAN

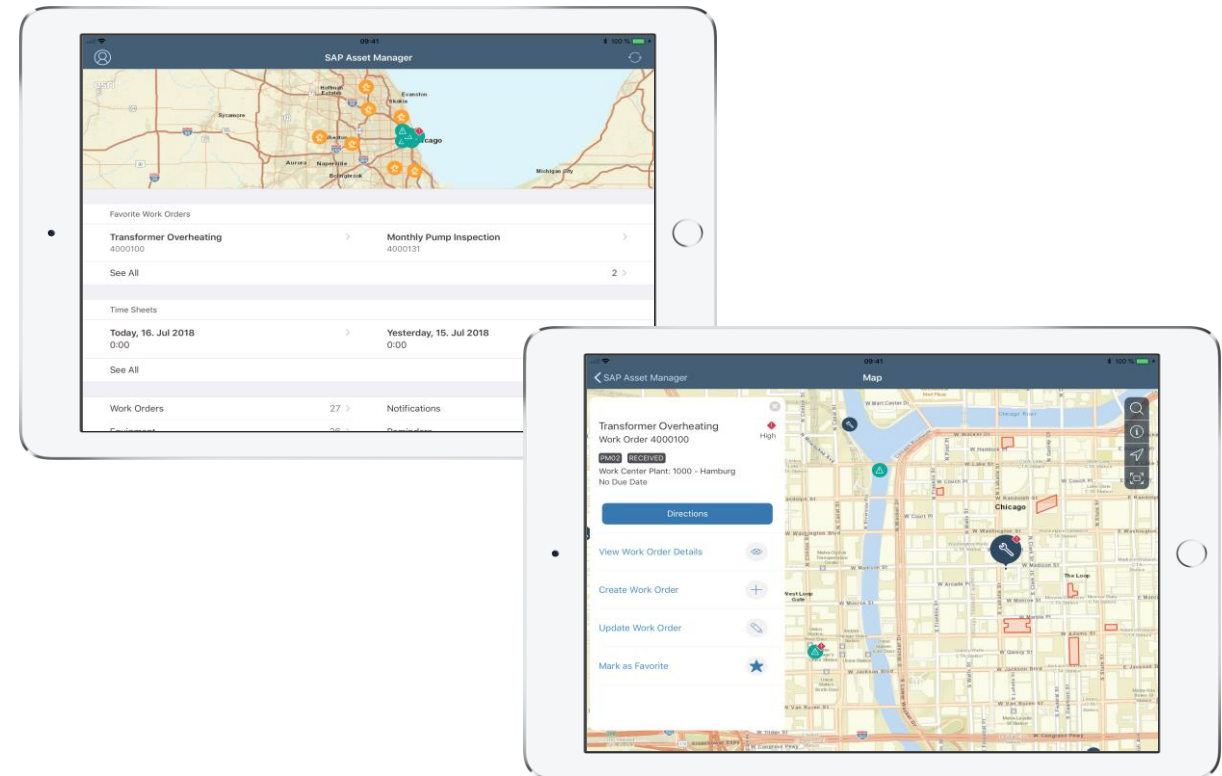
DEVELOPMENT AREA:  
DIGITAL CONNECTED  
ASSETS / PEI



### COMPETENCIES



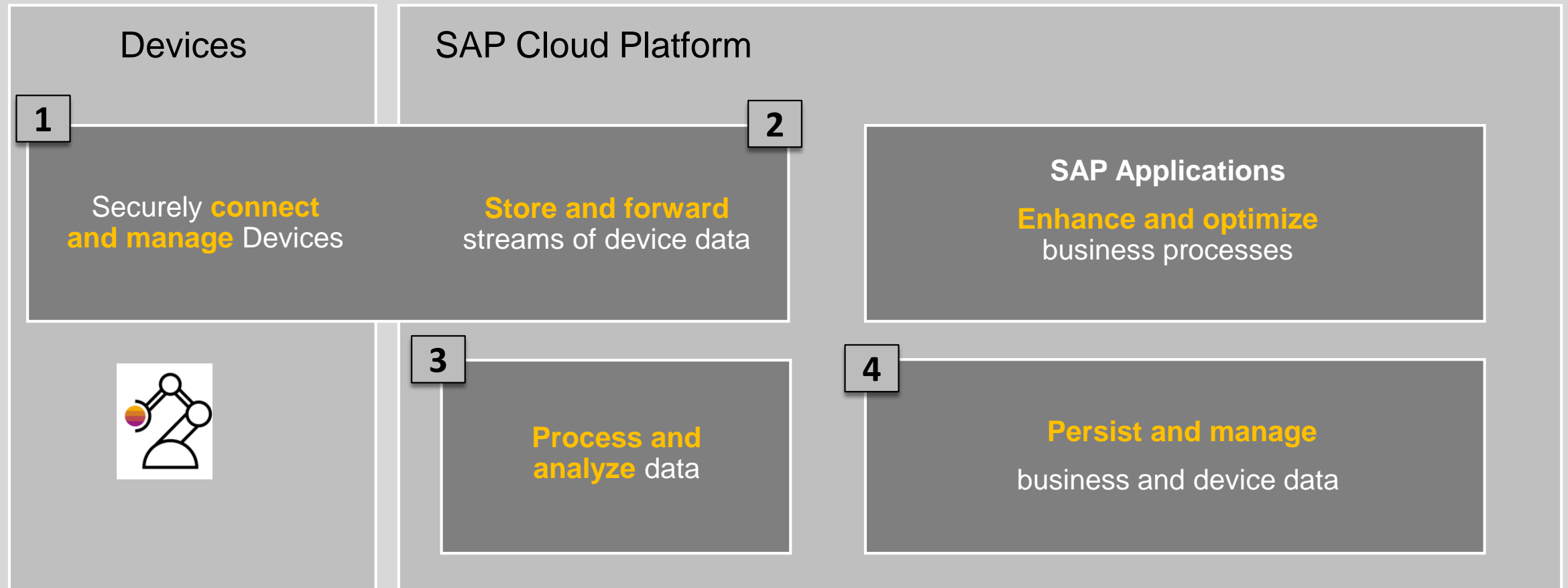
*“If I have to work with software, then give me only the information I need, don’t bother me with all the details.”*



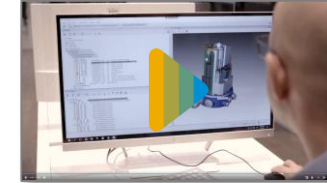
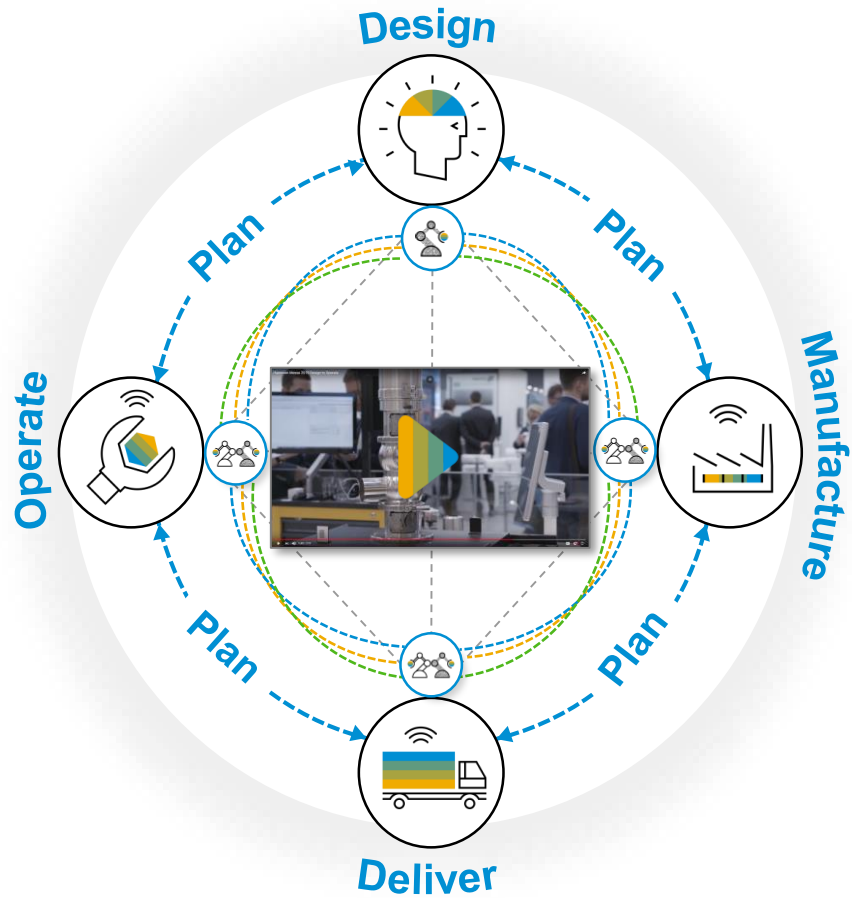
# Design to Operate: Technology highlights

## Common Architecture and foundation

Common reference architecture to simplify connectivity, analysis and storage of big data in order to improve your business processes.



# 2019 Design to Operate: Showcase videos!



[https://youtu.be/vZhpO1G7\\_hw](https://youtu.be/vZhpO1G7_hw)



<https://youtu.be/nrRmYmHPE8g>



<https://youtu.be/gnpQ-k24XYM>



[https://youtu.be/-xuqFgs\\_pGA](https://youtu.be/-xuqFgs_pGA)



<https://youtu.be/HSc4YJyA1BA>

# Agenda

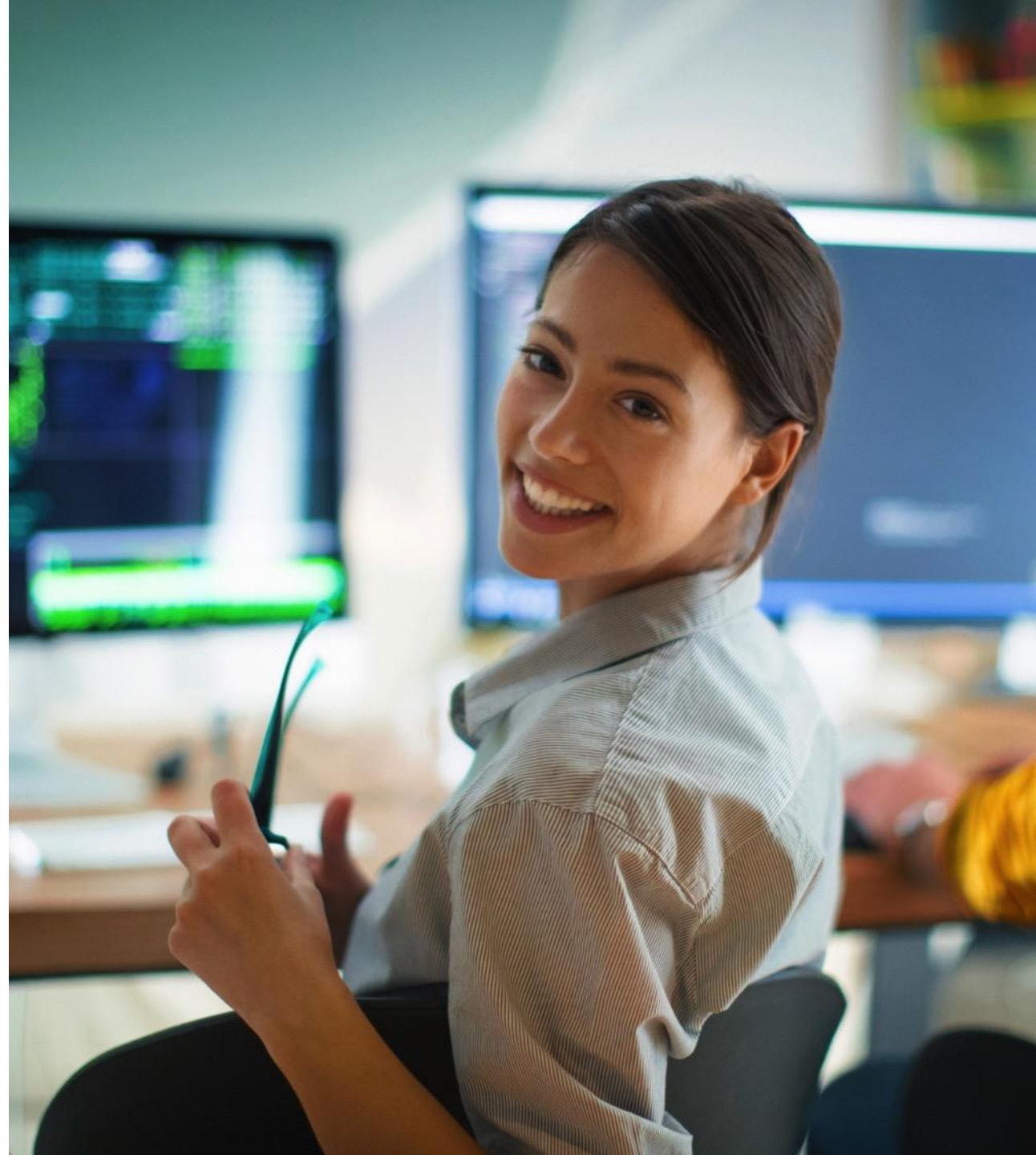
Intelligent Enterprise Framework

Design to Operate

- Overview
- Technology Highlights

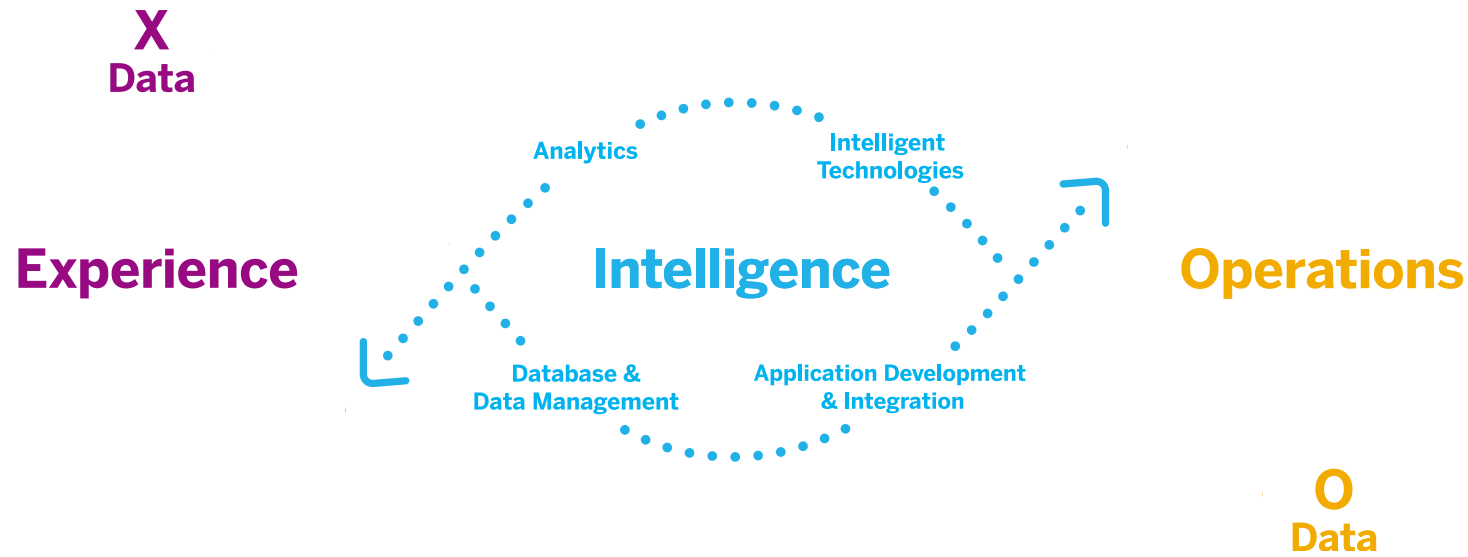
Key Take Aways

Q&A



# Design to Operate in the Intelligent Enterprise

## Key Differentiators

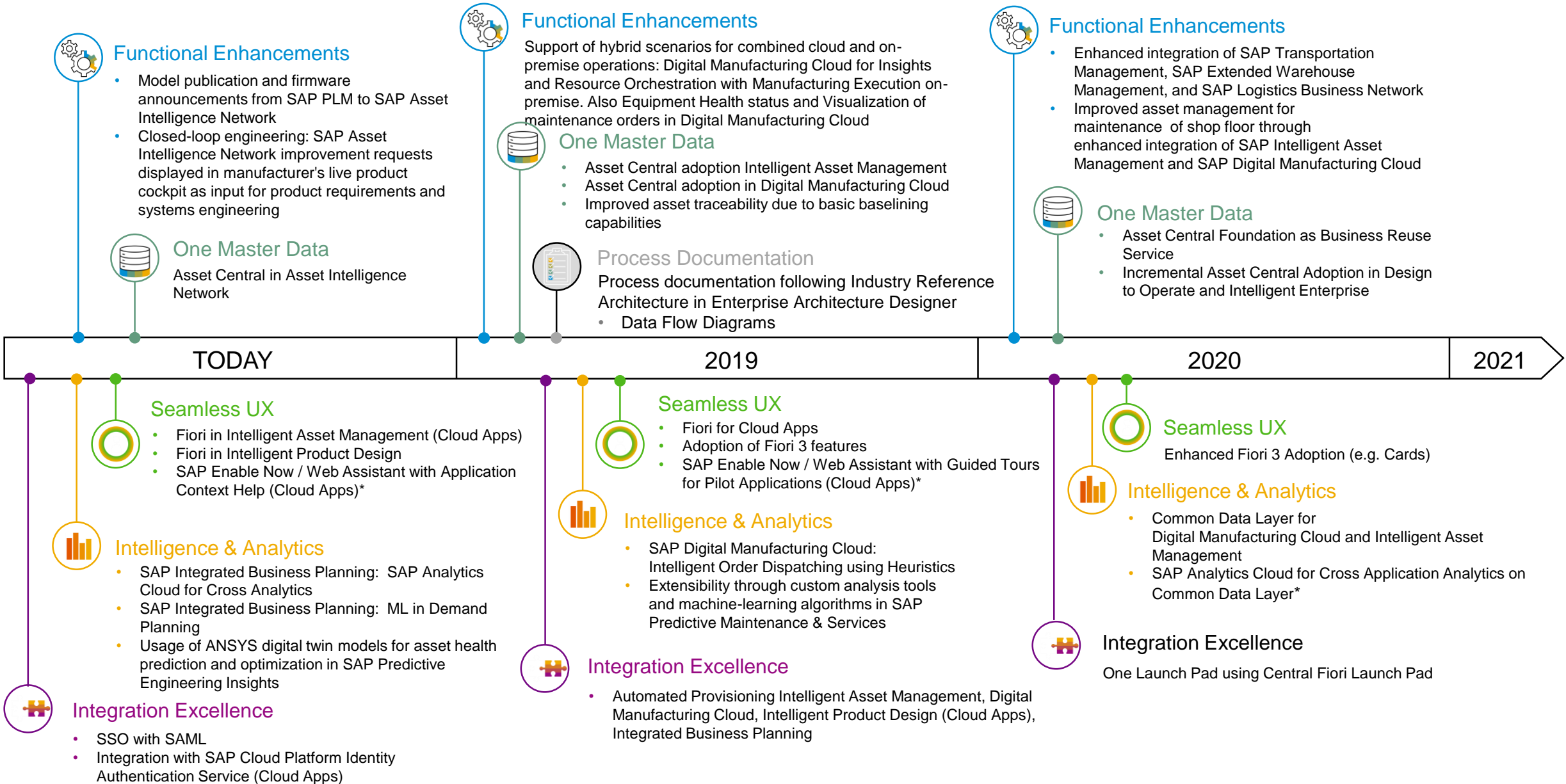


### Design to Operate 4 key differentiators:

- 1 Intelligence built into business processes
- 2 Seamless Integration
- 3 Digital Twin along value chain
- 4 Asset Central for all of IES



# Build the Intelligent Enterprise – Design to Operate Roadmap Excerpt



# Agenda

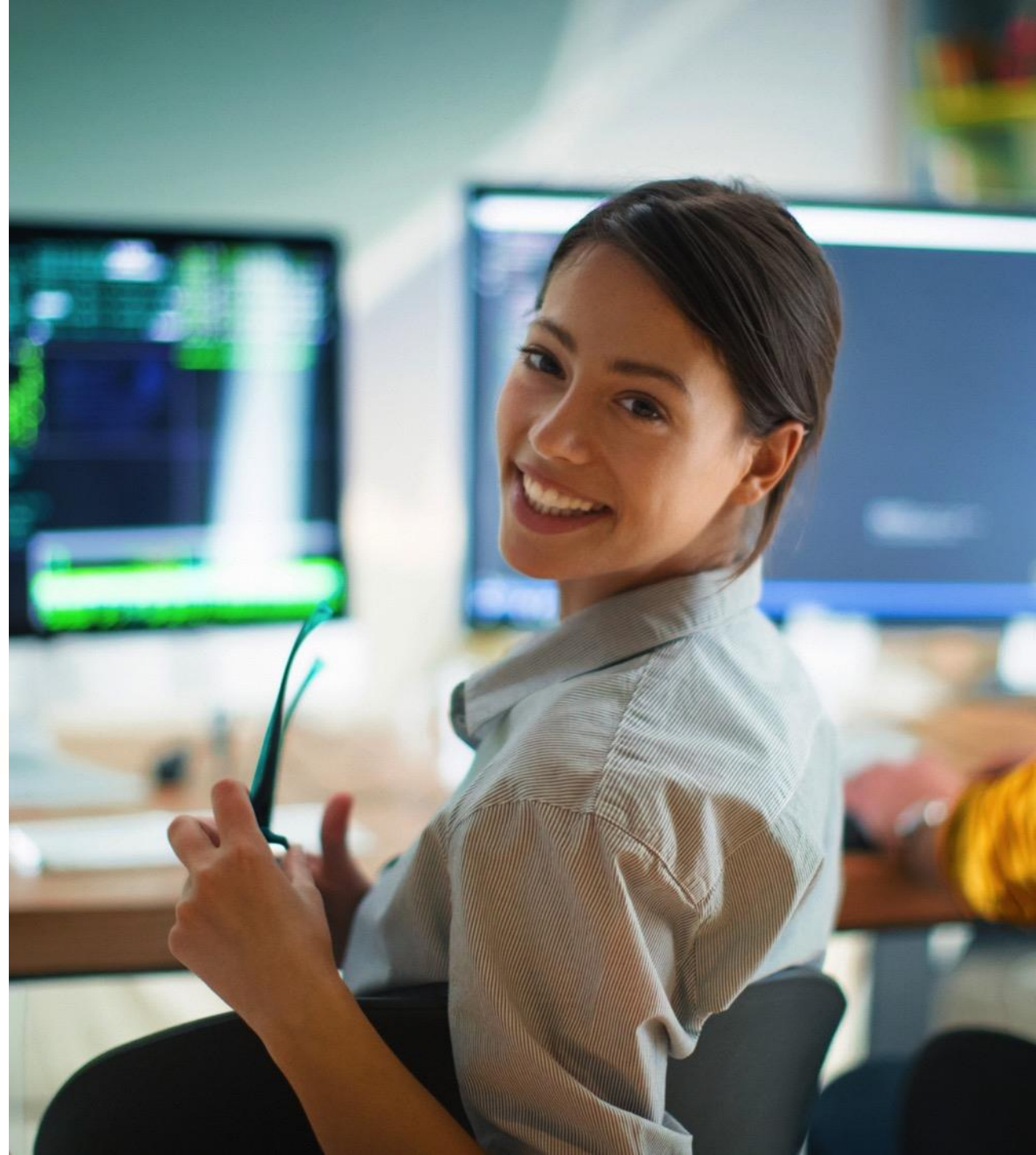
Intelligent Enterprise Framework

Design to Operate

- Overview
- Technology Highlights
- Roadmap

Key Take Aways

Q&A



# Continue your SAP TechEd 2019 Learning Experience

Join the digital SAP TechEd Learning Room 2019 in [SAP Learning Hub](#)

---

- Access SAP TechEd **Learning Journeys**
- Discover **related** learning content
- Watch **webinars** of SAP TechEd lectures
- Learn about SAP's latest innovations with **openSAP**
- Collaborate with **SAP experts**
- **Self-test** your knowledge
- Earn a SAP TechEd **knowledge badge**

**SAP** Learning Hub

open**SAP**



# Engage with the **SAP TechEd Community**

Access replays and continue your SAP TechEd discussion after the event within the **SAP Community**

---



## Access replays

- Keynotes
- Live interviews
- Select lecture sessions

<http://sapteched.com/online>



## Continue the conversation

- Read and reply to blog posts
- Ask questions
- Join discussions

[sap.com/community](http://sap.com/community)



## Check out the latest blogs

- See all SAP TechEd blog posts
- Learn from peers and experts

[SAP TechEd blog posts](#)

# More information



## Related SAP TechEd Learning Journeys

- iENT1 – Deliver the Intelligent Enterprise along key end-to-end processes
  - iENT2 – Innovate and transform your business processes with cloud solutions from SAP
- 

## Related SAP TechEd sessions

- DAT301 – Manage Your Industrial Data to Build an Intelligent Digital Supply Chain
  - CAA302 – Create an End-to-End Architecture for the Intelligent Digital Supply Chain
- 

## Public SAP Web sites

- SAP Community: [www.sap.com/community](http://www.sap.com/community)
- SAP products: [www.sap.com/products](http://www.sap.com/products)
- SAP Digital Supply Chain: <https://www.sap.com/products/digital-supply-chain.html>





Thanks for attending **this session.**



## Feedback

Please complete your session evaluation for **iENT100**.

## Contact for further topic inquiries

Sandy Markin  
SAP Digital Supply Chain Solution Management  
[sandy.markin@sap.com](mailto:sandy.markin@sap.com)



Follow us



[www.sap.com/contactsap](http://www.sap.com/contactsap)

© 2019 SAP SE or an SAP affiliate company. All rights reserved.

No part of this publication may be reproduced or transmitted in any form or for any purpose without the express permission of SAP SE or an SAP affiliate company.

The information contained herein may be changed without prior notice. Some software products marketed by SAP SE and its distributors contain proprietary software components of other software vendors. National product specifications may vary.

These materials are provided by SAP SE or an SAP affiliate company for informational purposes only, without representation or warranty of any kind, and SAP or its affiliated companies shall not be liable for errors or omissions with respect to the materials. The only warranties for SAP or SAP affiliate company products and services are those that are set forth in the express warranty statements accompanying such products and services, if any. Nothing herein should be construed as constituting an additional warranty.

In particular, SAP SE or its affiliated companies have no obligation to pursue any course of business outlined in this document or any related presentation, or to develop or release any functionality mentioned therein. This document, or any related presentation, and SAP SE's or its affiliated companies' strategy and possible future developments, products, and/or platforms, directions, and functionality are all subject to change and may be changed by SAP SE or its affiliated companies at any time for any reason without notice. The information in this document is not a commitment, promise, or legal obligation to deliver any material, code, or functionality. All forward-looking statements are subject to various risks and uncertainties that could cause actual results to differ materially from expectations. Readers are cautioned not to place undue reliance on these forward-looking statements, and they should not be relied upon in making purchasing decisions.

SAP and other SAP products and services mentioned herein as well as their respective logos are trademarks or registered trademarks of SAP SE (or an SAP affiliate company) in Germany and other countries. All other product and service names mentioned are the trademarks of their respective companies.

See [www.sap.com/copyright](http://www.sap.com/copyright) for additional trademark information and notices.

