



Experience the Next-Generation Processes of the Intelligent Suite from SAP

iENT200

PUBLIC



Speakers

Las Vegas

September 24–27, 2019

Michael Ameling

Barcelona

October 8-10, 2019

Michael Ameling

Bangalore

November 13-15, 2019

Michael Ameling



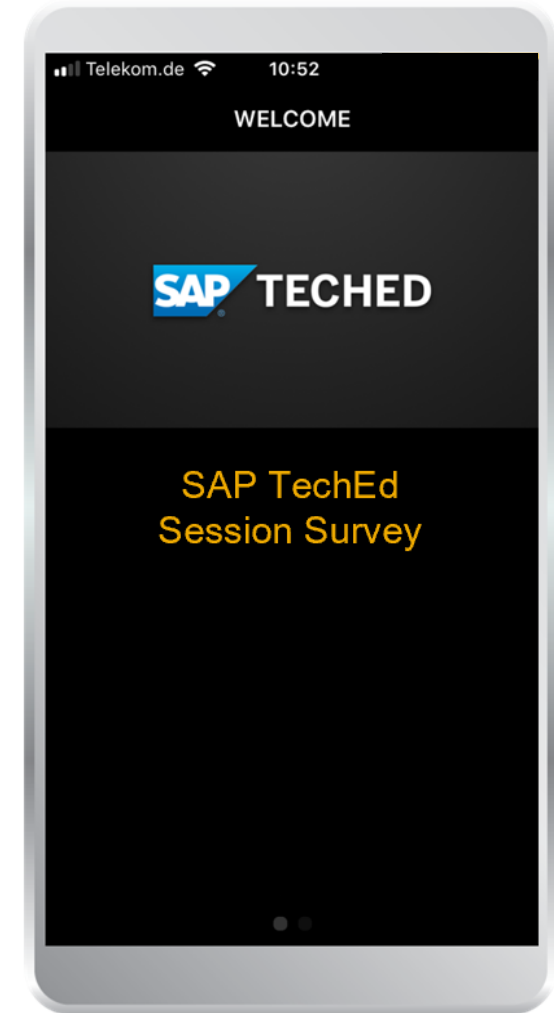
Take the **session survey**.

We want to hear from you!

Complete the session evaluation for this session **iENT200** on the SAP TechEd mobile app.



Download the app from
iPhone App Store or Google Play.



Disclaimer

The information in this presentation is confidential and proprietary to SAP and may not be disclosed without the permission of SAP. Except for your obligation to protect confidential information, this presentation is not subject to your license agreement or any other service or subscription agreement with SAP. SAP has no obligation to pursue any course of business outlined in this presentation or any related document, or to develop or release any functionality mentioned therein.

This presentation, or any related document and SAP's strategy and possible future developments, products and or platforms directions and functionality are all subject to change and may be changed by SAP at any time for any reason without notice. The information in this presentation is not a commitment, promise or legal obligation to deliver any material, code or functionality. This presentation is provided without a warranty of any kind, either express or implied, including but not limited to, the implied warranties of merchantability, fitness for a particular purpose, or non-infringement. This presentation is for informational purposes and may not be incorporated into a contract. SAP assumes no responsibility for errors or omissions in this presentation, except if such damages were caused by SAP's intentional or gross negligence.

All forward-looking statements are subject to various risks and uncertainties that could cause actual results to differ materially from expectations. Readers are cautioned not to place undue reliance on these forward-looking statements, which speak only as of their dates, and they should not be relied upon in making purchasing decisions.

Agenda

Delivering the Intelligent Enterprise

End-to-end business processes

Technology guidelines

Summary

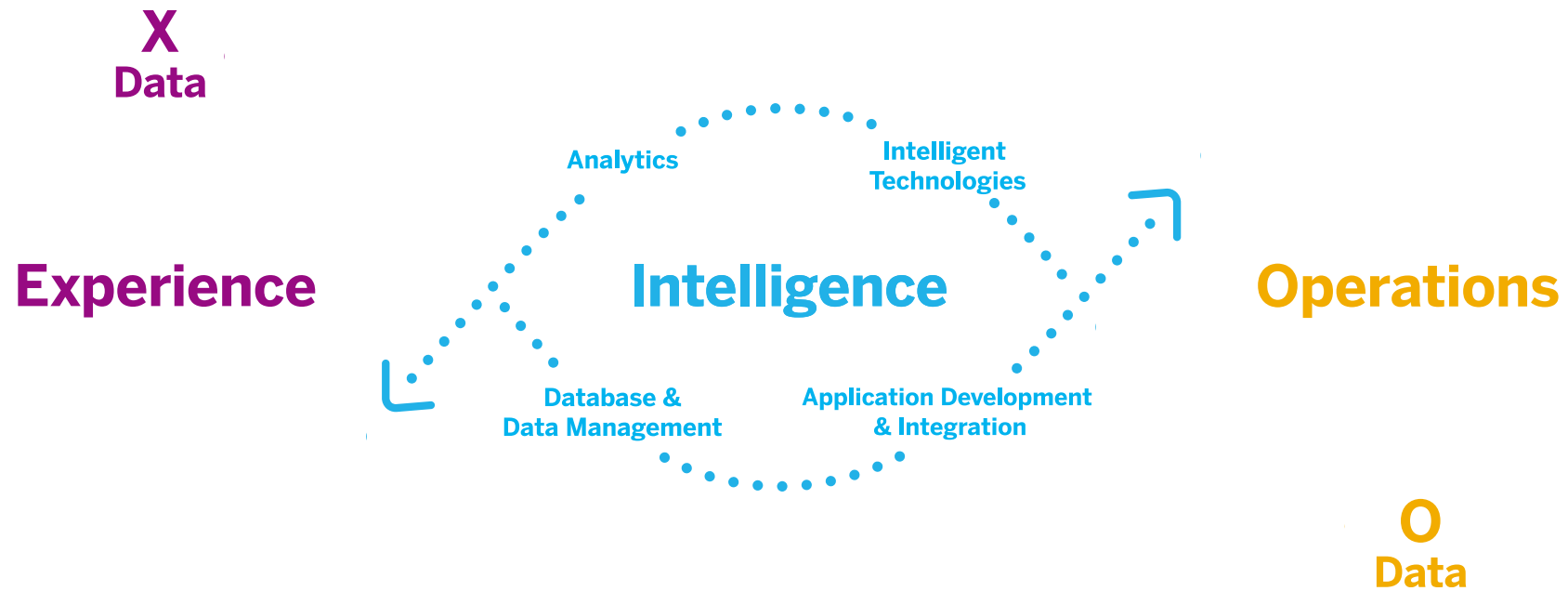
Q&A



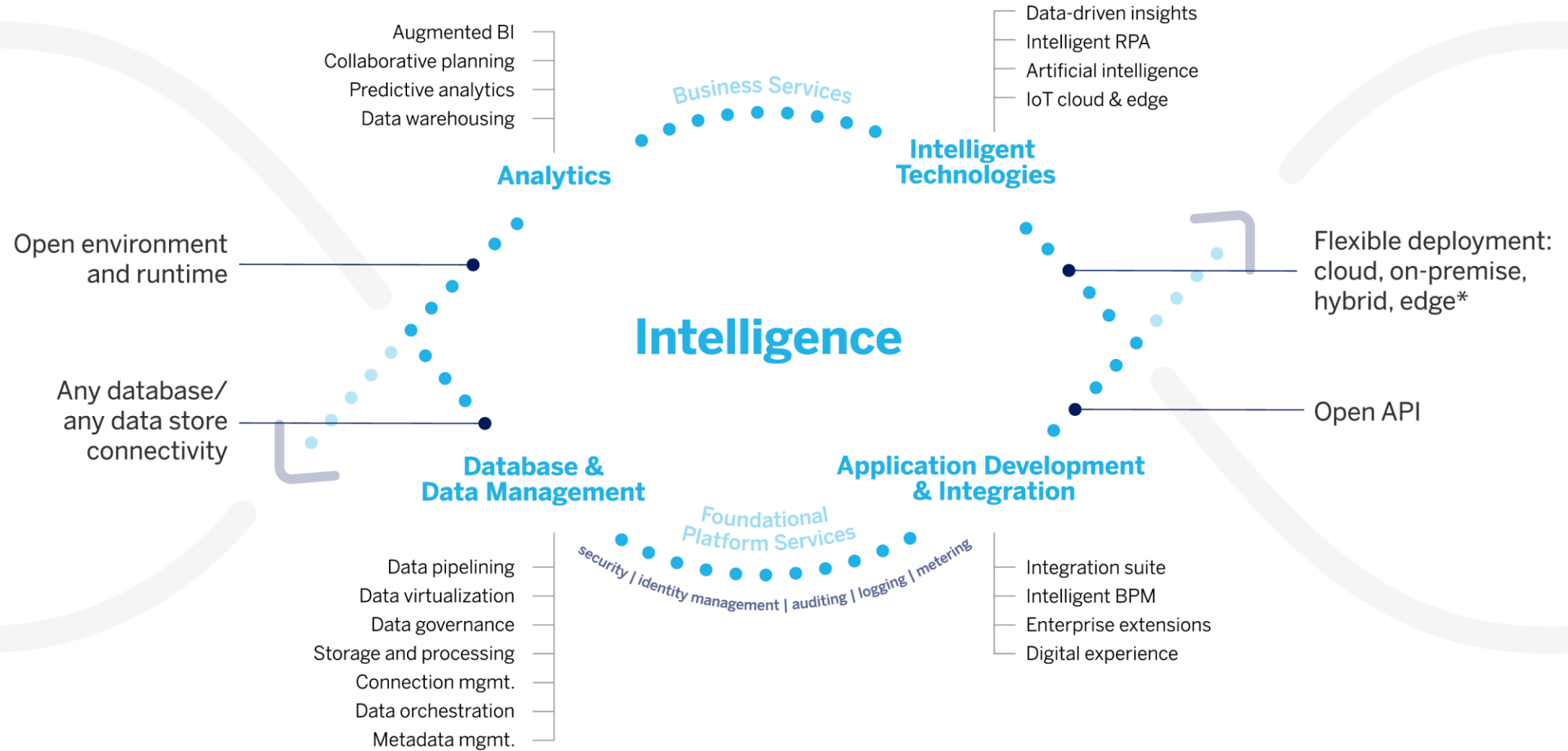
Delivering the Intelligent Enterprise



Intelligent Enterprise



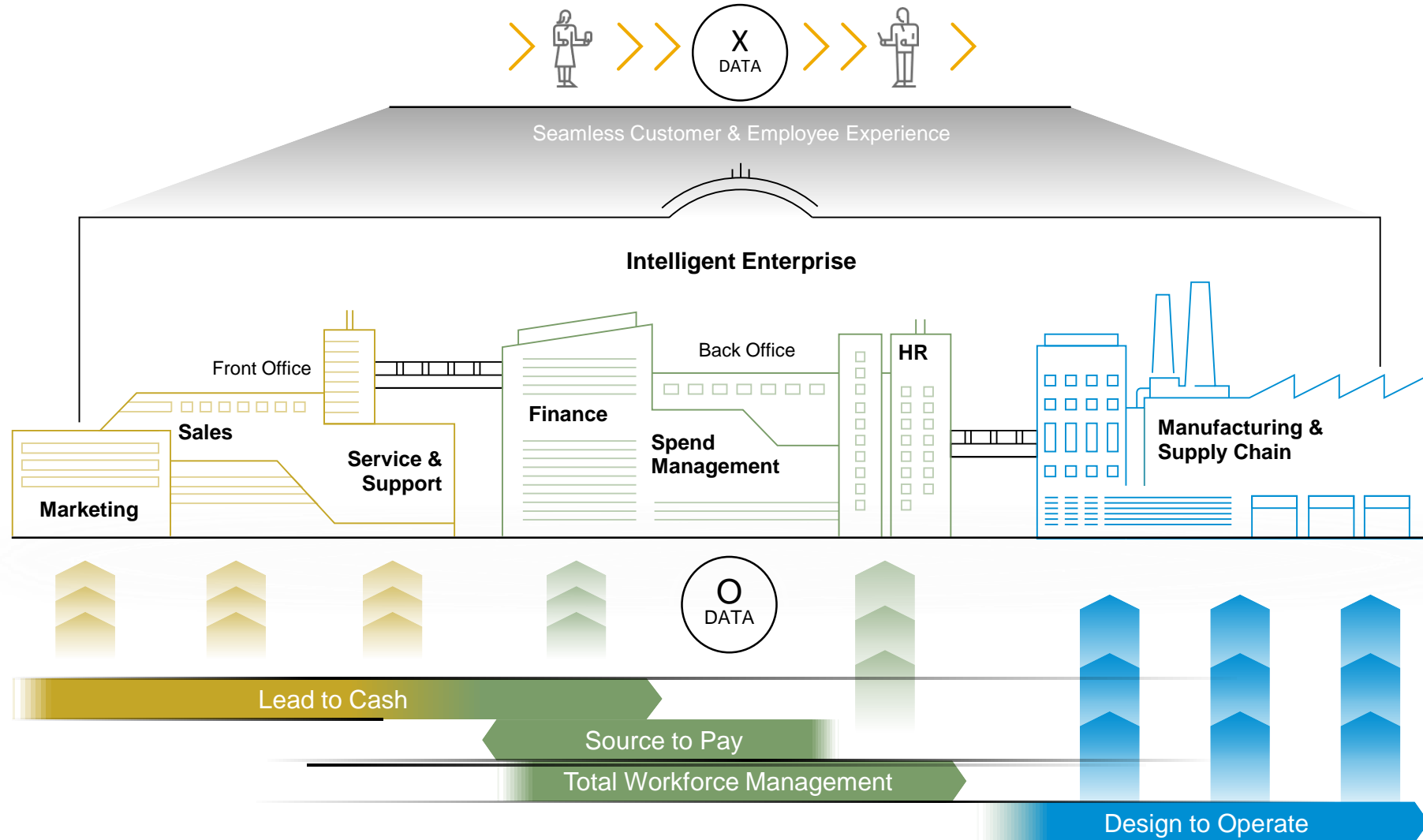
Business Technology Platform



*Services availability may change per deployment model and IaaS vendors

The Intelligent Enterprise

Integrated end-to-end business processes for the entire value chain



End-to-end business processes for the Intelligent Enterprise



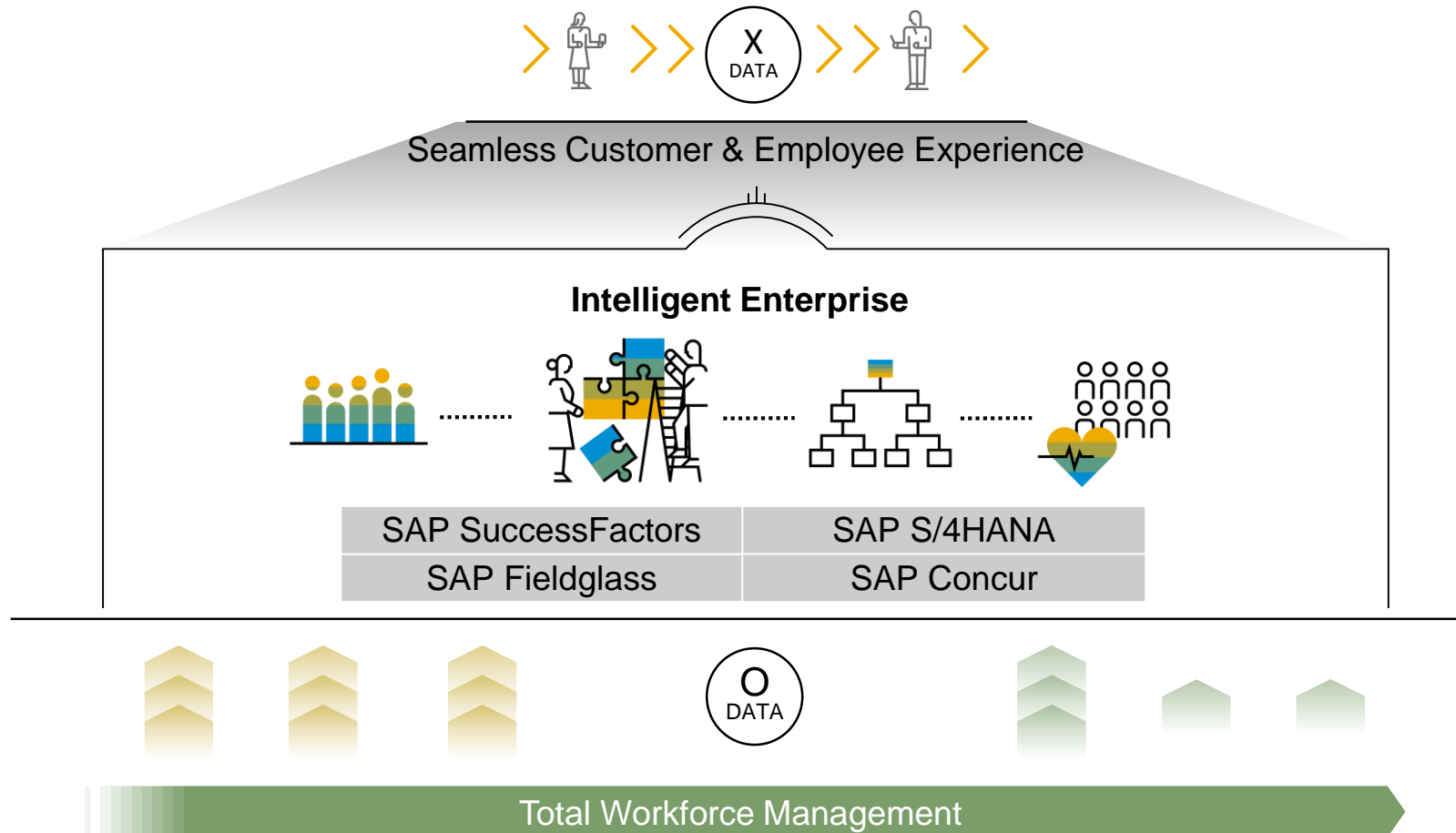
End-to-End Business Processes

Total Workforce Management



The Intelligent Enterprise

Integrated end-to-end **Total Workforce Management** process



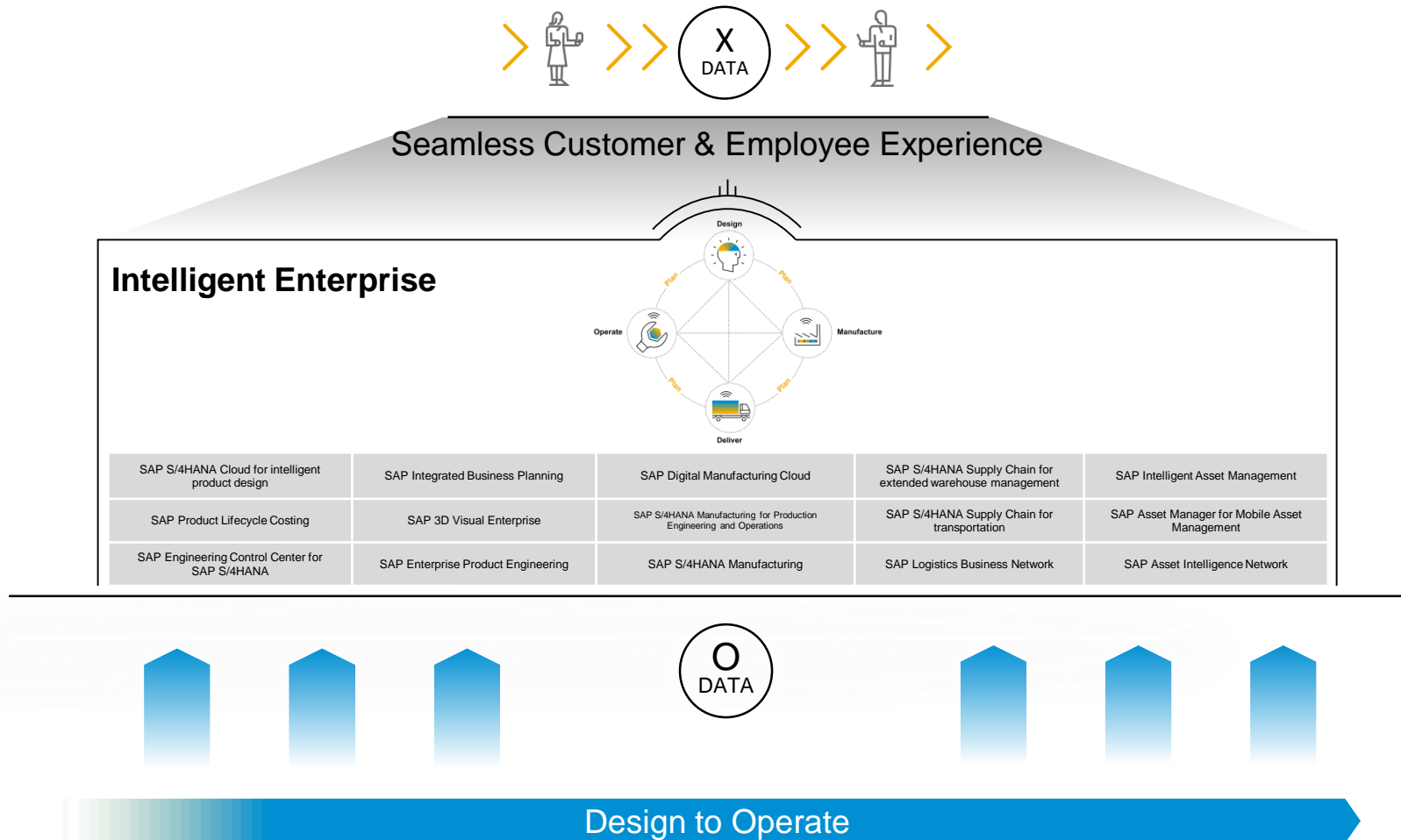
End-to-End Business Processes

Design to Operate



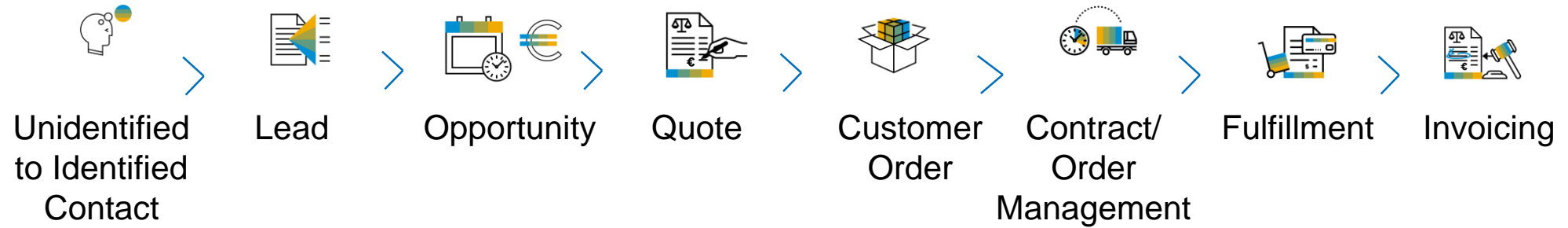
The Intelligent Enterprise

Integrated end-to-end **Design to Operate** process



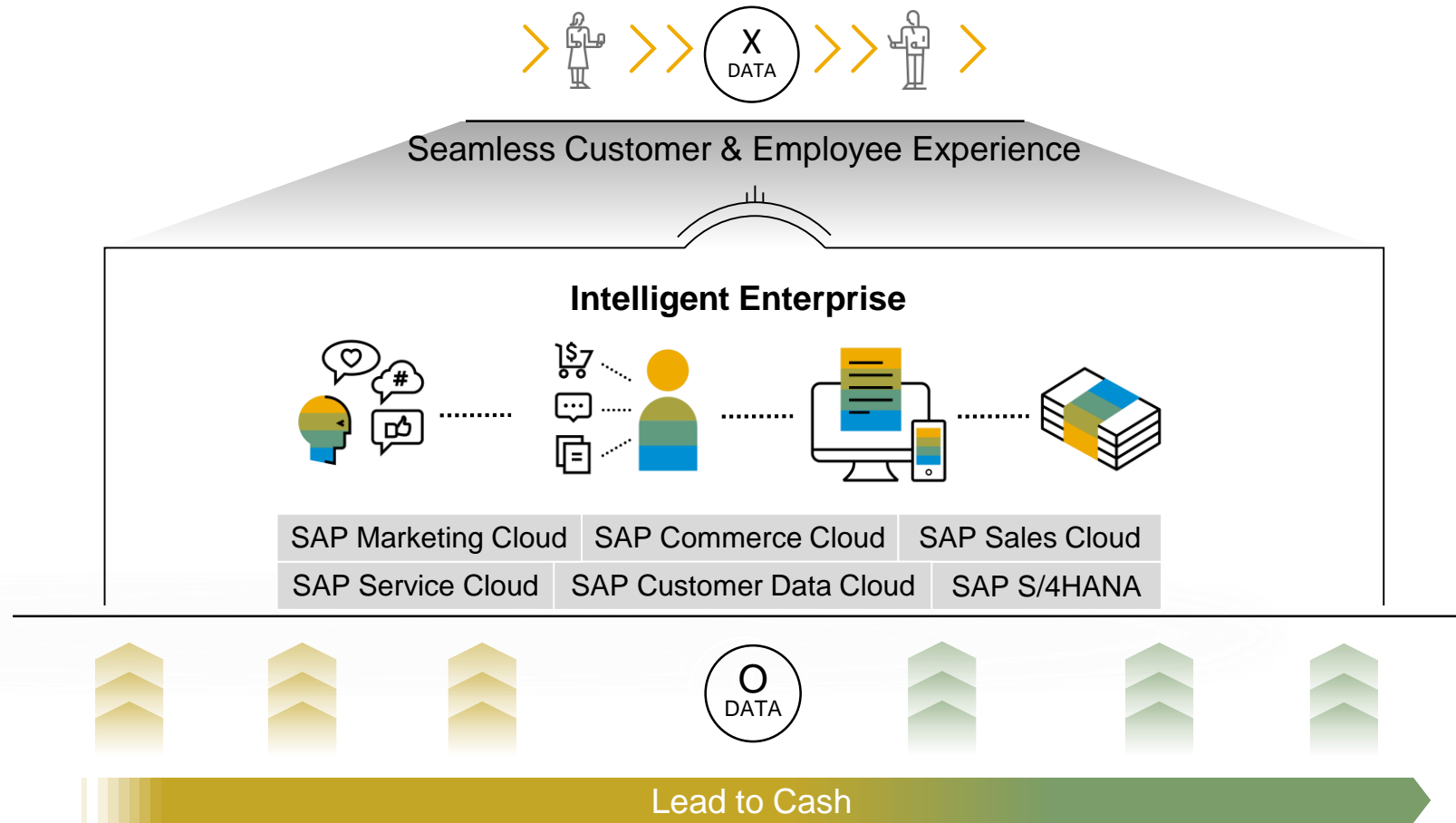
End-to-End Business Processes

Lead to Cash



The Intelligent Enterprise

Integrated end-to-end **Lead to Cash** Process



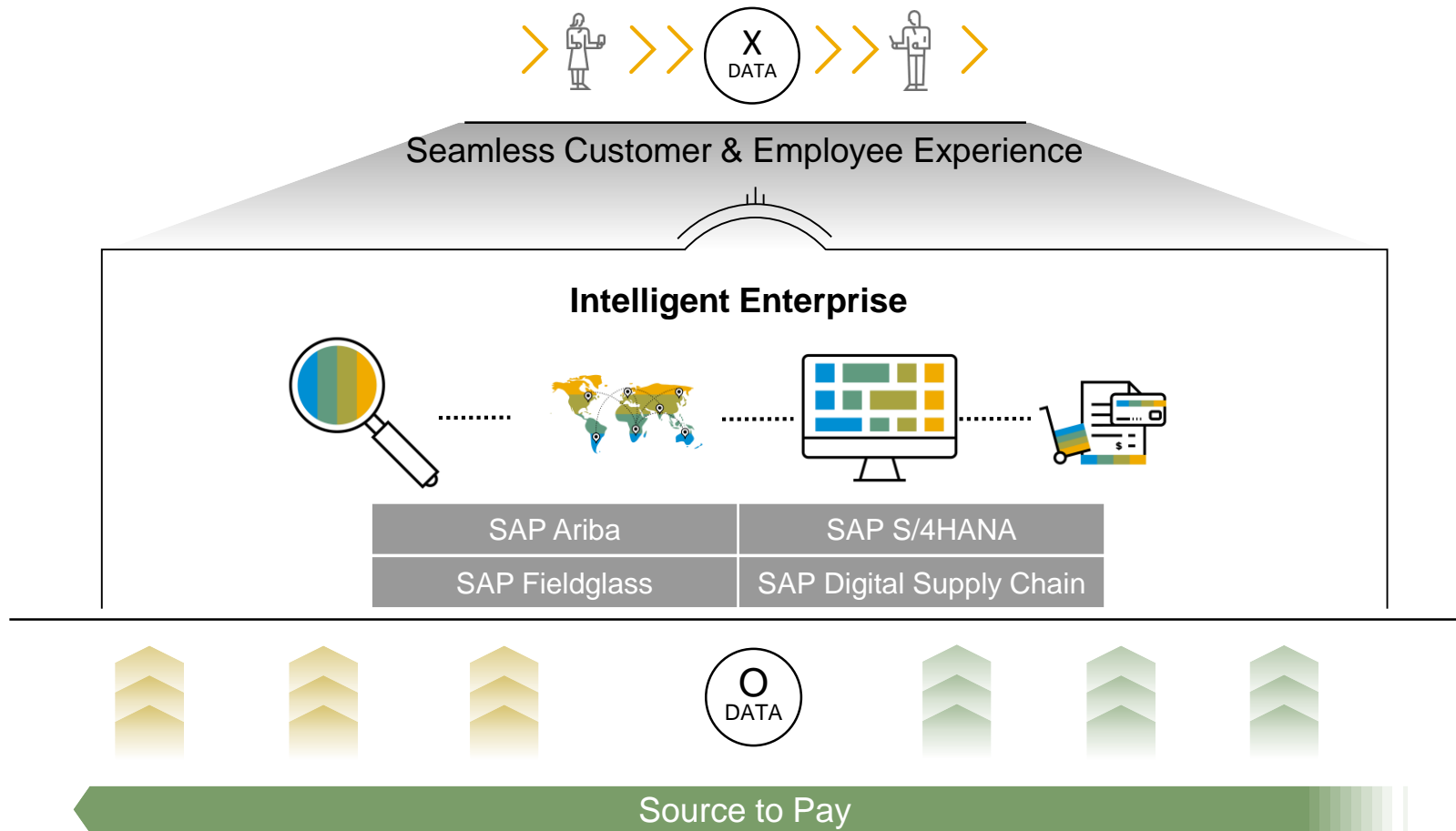
End-to-End Business Processes

Source to Pay



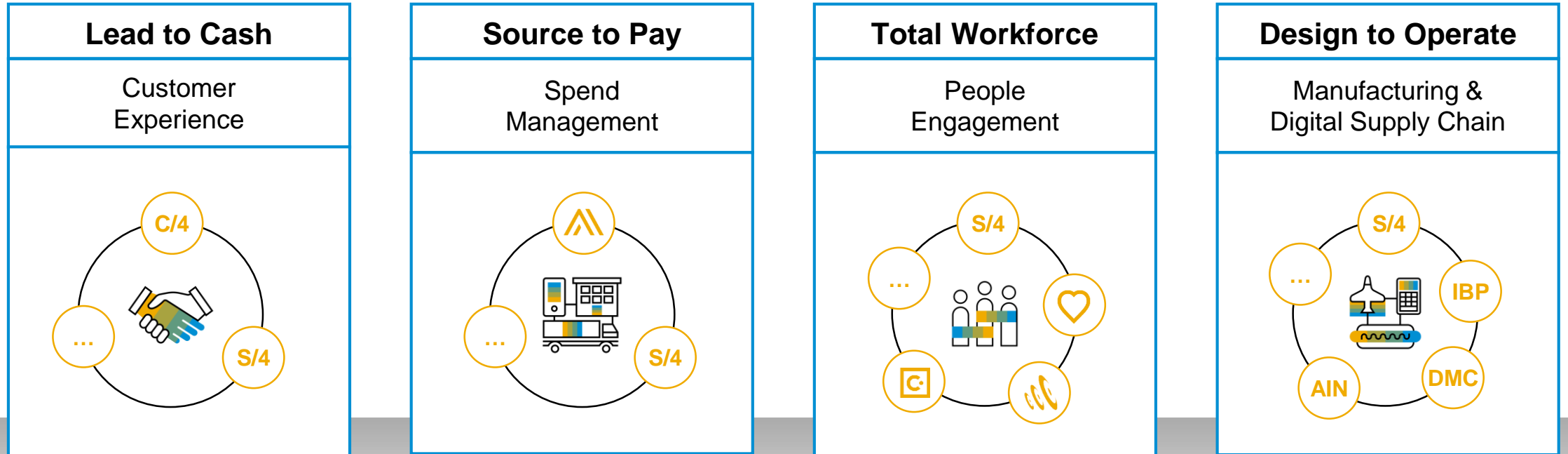
End-to-End Business Processes

Integrated end-to-end **Source to Pay** process



SAP integration DNA for the Intelligent Suite

Consistent adoption of technology guidelines along key scenarios



Reference Architecture



Core Integration



Application Lifecycle Management



Security & Identity Management



Experience



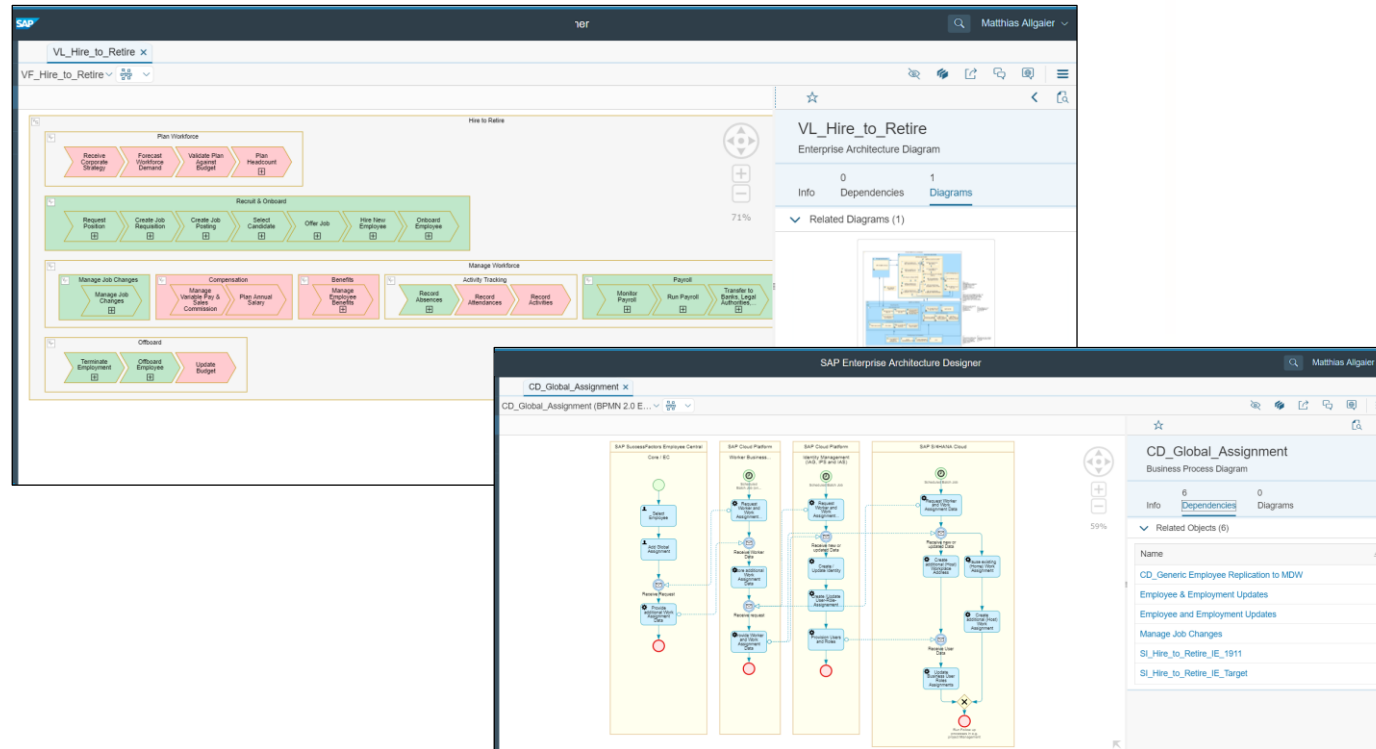
Analytics



Technology Guidelines

Reference Architecture

End-to-end business process models published at SAP API Business Hub



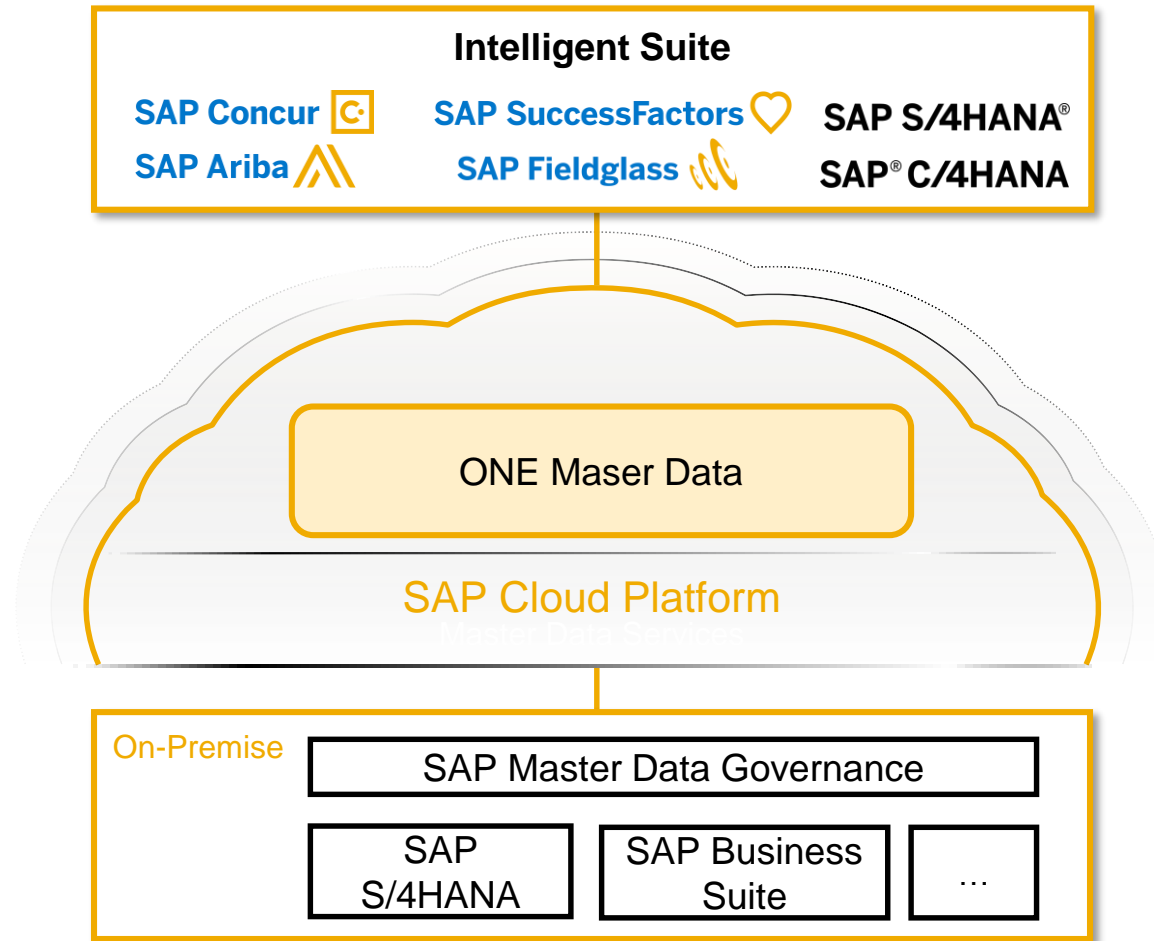
Example: Total Workforce Management (Hire to Retire)

Demo

SAP Business API Hub and reference architecture

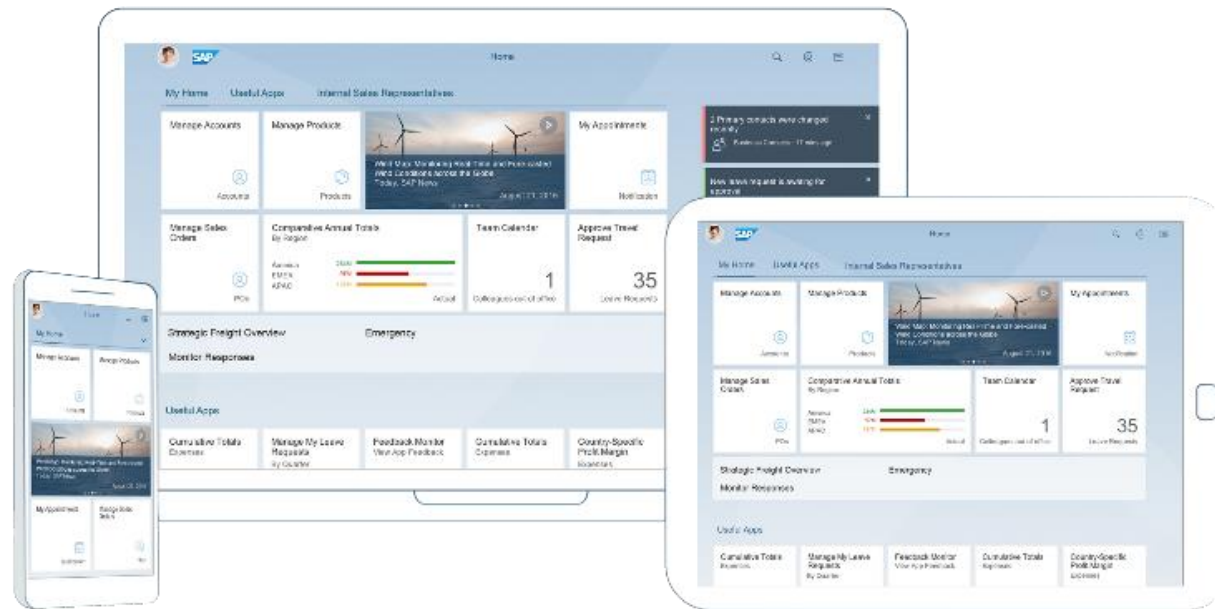
Central master data services

From master data replication towards data sharing



Experience

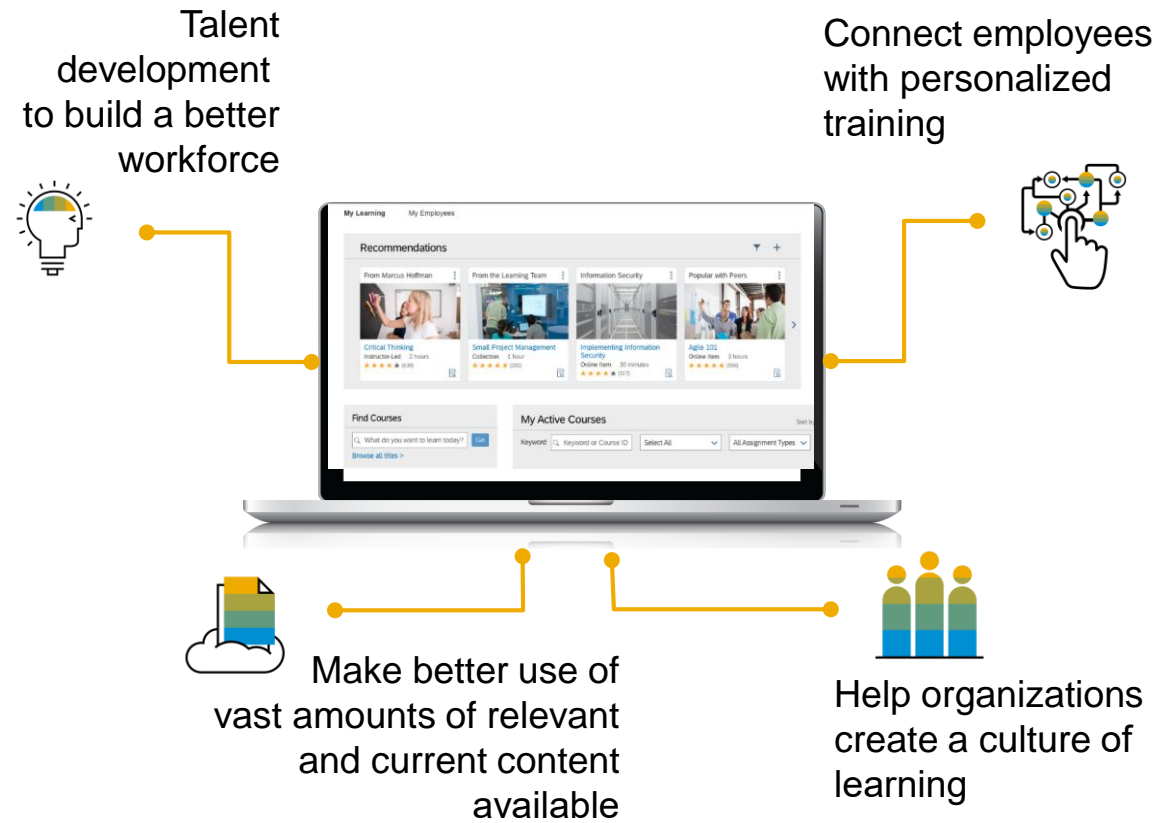
Consistent and delightful



Demo

Hire to Retire User Experience

Intelligence



Summary



Delivering the Intelligent Enterprise

Strategy and Vision

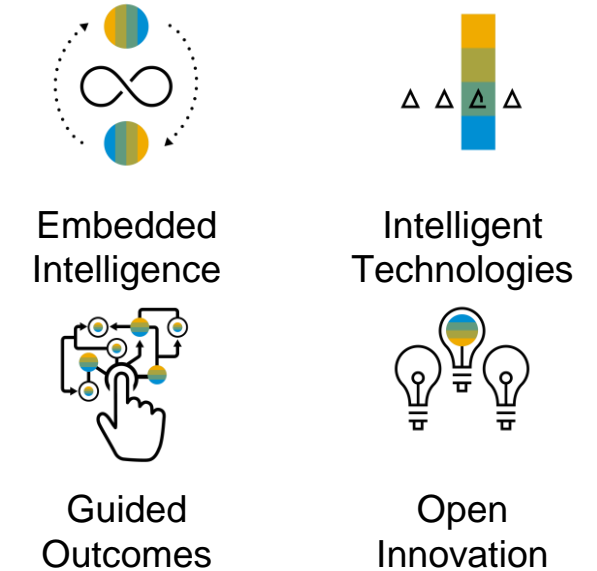
End-to-End Processes



Technology Guidelines



Go To Market Approach



Vision

Strategy

Deliver Value Now

Next-generation business processes of SAP's Intelligent Suite

Key take aways

- SAP executes along four end-to-end business processes (Total Workforce Management, Lead to Cash, Source to Pay, Design to Operate) to form an Intelligent Enterprise Suite.
- Technology guidelines are consistently applied to the SAP applications belonging to the Intelligent Enterprise Suite in order to deliver truly integrated business processes.
- Technology guidelines ensure tight integration and consistent experience.

Discover the Integration DNA of the Intelligent Suite from SAP

Q & A

Continue your SAP TechEd 2019 Learning Experience

Join the digital SAP TechEd Learning Room 2019 in [SAP Learning Hub](#)

- Access SAP TechEd **Learning Journeys**
- Discover **related** learning content
- Watch **webinars** of SAP TechEd lectures
- Learn about SAP's latest innovations with **openSAP**
- Collaborate with **SAP experts**
- **Self-test** your knowledge
- Earn a SAP TechEd **knowledge badge**

SAP Learning Hub

open**SAP**



Engage with the **SAP TechEd Community**

Access replays and continue your SAP TechEd discussion after the event within the **SAP Community**



Access replays

- Keynotes
- Live interviews
- Select lecture sessions

<http://sapteched.com/online>



Continue the conversation

- Read and reply to blog posts
- Ask questions
- Join discussions

sap.com/community



Check out the latest blogs

- See all SAP TechEd blog posts
- Learn from peers and experts

[SAP TechEd blog posts](#)

More information



Related SAP TechEd Learning Journeys

- INT1 – Connect with an Intelligent Suite in an hybrid landscape
 - INT2 – Master integration technologies uniting your intelligent suite
 - ENT1 – Deliver the Intelligent Enterprise along key end-to-end processes
-

Related SAP TechEd sessions

- <Strategy Talk Integration> – Unlocking the Power of One SAP
 - INT101 - Integrate It All with SAP Cloud Platform Integration Suite
 - INT300 - Simplify Master Data Integration with Services from SAP Cloud Platform
 - INT301 - Experience the Next-Generation Processes of the Intelligent Suite from SAP
 - AIN103 - Integrating SAP Analytics Cloud in SAP Applications
-

Public SAP Web sites

- SAP Community: <https://www.sap.com/community/topics/cloud-integration.html>
- SAP products: <https://www.sap.com/products/intelligent-enterprise.html>
- SAP road map „The Journey to the Intelligent Enterprise - End-to-End Process Road Maps“: <https://www.sap.com/documents/2019/08/7cdc3110-607d-0010-87a3-c30de2ffd8ff.html>



Thanks for attending **this session.**



Feedback

Please complete your session evaluation for **iENT200**.

Contact for further topic inquiries

Dr. Michael Ameling
Intelligent Enterprise Program & IES Technology
michael.ameling@sap.com

Follow us



www.sap.com/contactsap

© 2019 SAP SE or an SAP affiliate company. All rights reserved.

No part of this publication may be reproduced or transmitted in any form or for any purpose without the express permission of SAP SE or an SAP affiliate company.

The information contained herein may be changed without prior notice. Some software products marketed by SAP SE and its distributors contain proprietary software components of other software vendors. National product specifications may vary.

These materials are provided by SAP SE or an SAP affiliate company for informational purposes only, without representation or warranty of any kind, and SAP or its affiliated companies shall not be liable for errors or omissions with respect to the materials. The only warranties for SAP or SAP affiliate company products and services are those that are set forth in the express warranty statements accompanying such products and services, if any. Nothing herein should be construed as constituting an additional warranty.

In particular, SAP SE or its affiliated companies have no obligation to pursue any course of business outlined in this document or any related presentation, or to develop or release any functionality mentioned therein. This document, or any related presentation, and SAP SE's or its affiliated companies' strategy and possible future developments, products, and/or platforms, directions, and functionality are all subject to change and may be changed by SAP SE or its affiliated companies at any time for any reason without notice. The information in this document is not a commitment, promise, or legal obligation to deliver any material, code, or functionality. All forward-looking statements are subject to various risks and uncertainties that could cause actual results to differ materially from expectations. Readers are cautioned not to place undue reliance on these forward-looking statements, and they should not be relied upon in making purchasing decisions.

SAP and other SAP products and services mentioned herein as well as their respective logos are trademarks or registered trademarks of SAP SE (or an SAP affiliate company) in Germany and other countries. All other product and service names mentioned are the trademarks of their respective companies.

See www.sap.com/copyright for additional trademark information and notices.

