



Discover the Integration DNA of the Intelligent Suite from SAP

INT103

PUBLIC

Speakers

Las Vegas

September 24–27, 2019

Matthias Allgaier

Barcelona

October 8-10, 2019

Katrin von Ahsen

Bangalore

November 13-15, 2019

Katrin von Ahsen



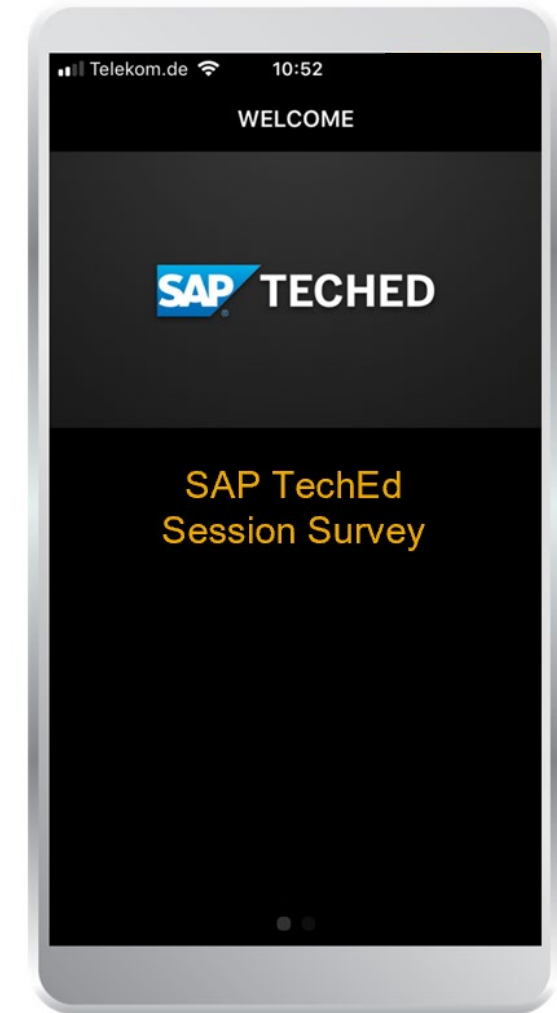
Take the **session survey**.

We want to hear from you!

Complete the session evaluation for this session
INT103 on the SAP TechEd mobile app.



Download the app from
iPhone App Store or Google Play.



Disclaimer

The information in this presentation is confidential and proprietary to SAP and may not be disclosed without the permission of SAP. Except for your obligation to protect confidential information, this presentation is not subject to your license agreement or any other service or subscription agreement with SAP. SAP has no obligation to pursue any course of business outlined in this presentation or any related document, or to develop or release any functionality mentioned therein.

This presentation, or any related document and SAP's strategy and possible future developments, products and or platforms directions and functionality are all subject to change and may be changed by SAP at any time for any reason without notice. The information in this presentation is not a commitment, promise or legal obligation to deliver any material, code or functionality. This presentation is provided without a warranty of any kind, either express or implied, including but not limited to, the implied warranties of merchantability, fitness for a particular purpose, or non-infringement. This presentation is for informational purposes and may not be incorporated into a contract. SAP assumes no responsibility for errors or omissions in this presentation, except if such damages were caused by SAP's intentional or gross negligence.

All forward-looking statements are subject to various risks and uncertainties that could cause actual results to differ materially from expectations. Readers are cautioned not to place undue reliance on these forward-looking statements, which speak only as of their dates, and they should not be relied upon in making purchasing decisions.

Agenda

Integration strategy for the Intelligent Suite

Technology guidelines for the Intelligent Suite

Guidance for Enterprise Architects

Roadmap and Summary

Q&A

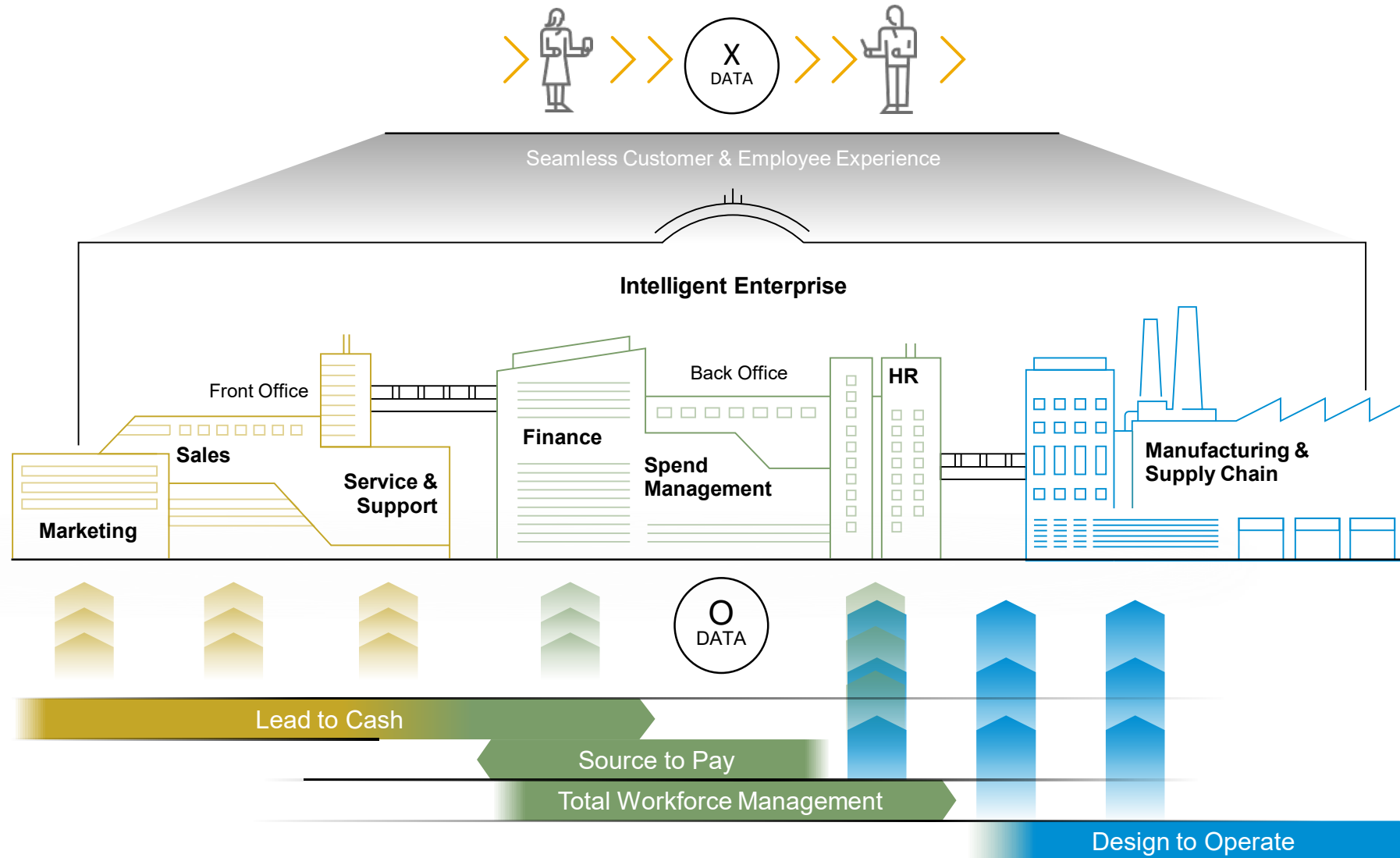


Integration Strategy for the Intelligent Suite



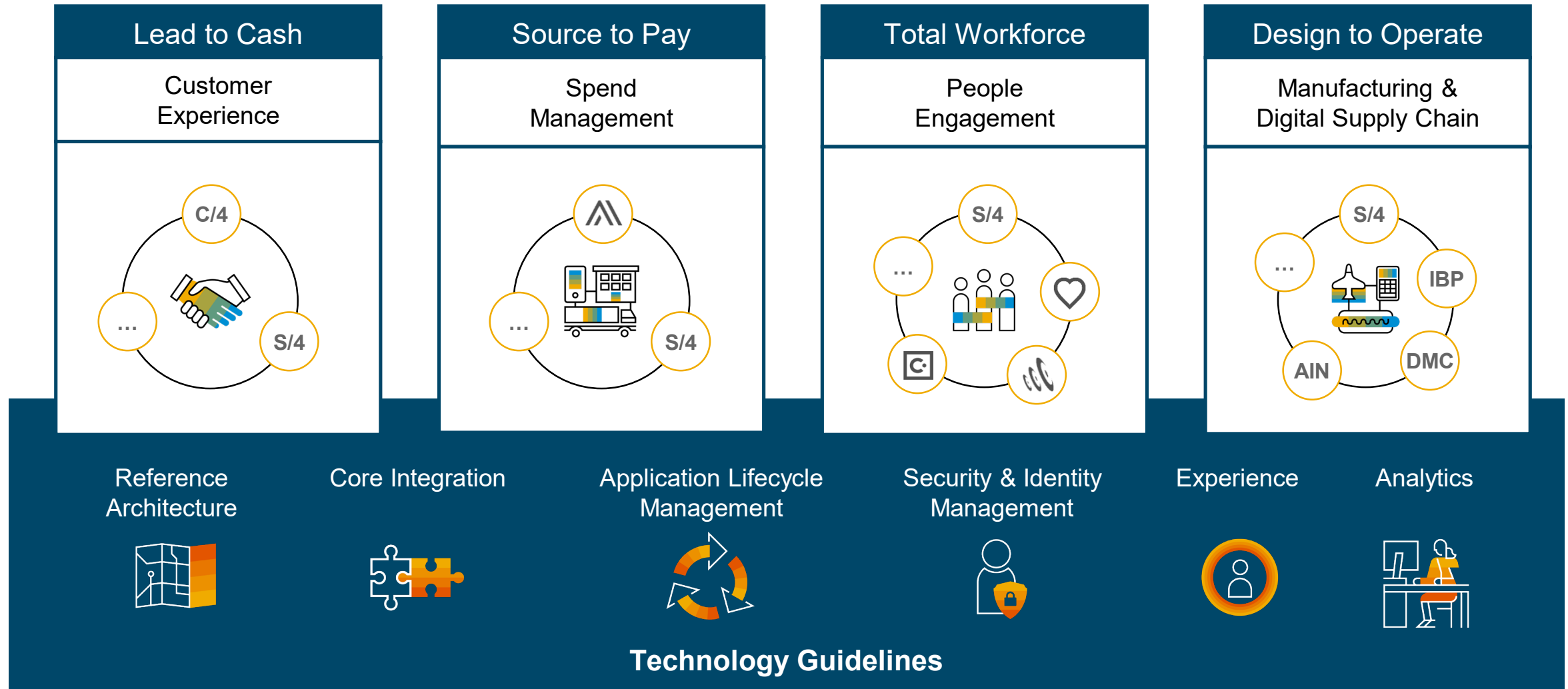
The Intelligent Enterprise

Integrated end-to-end business processes for the entire value chain



SAP integration DNA for the Intelligent Suite

Consistent adoption of technology guidelines* along key scenarios to form an Intelligent Suite



Technology Guideline

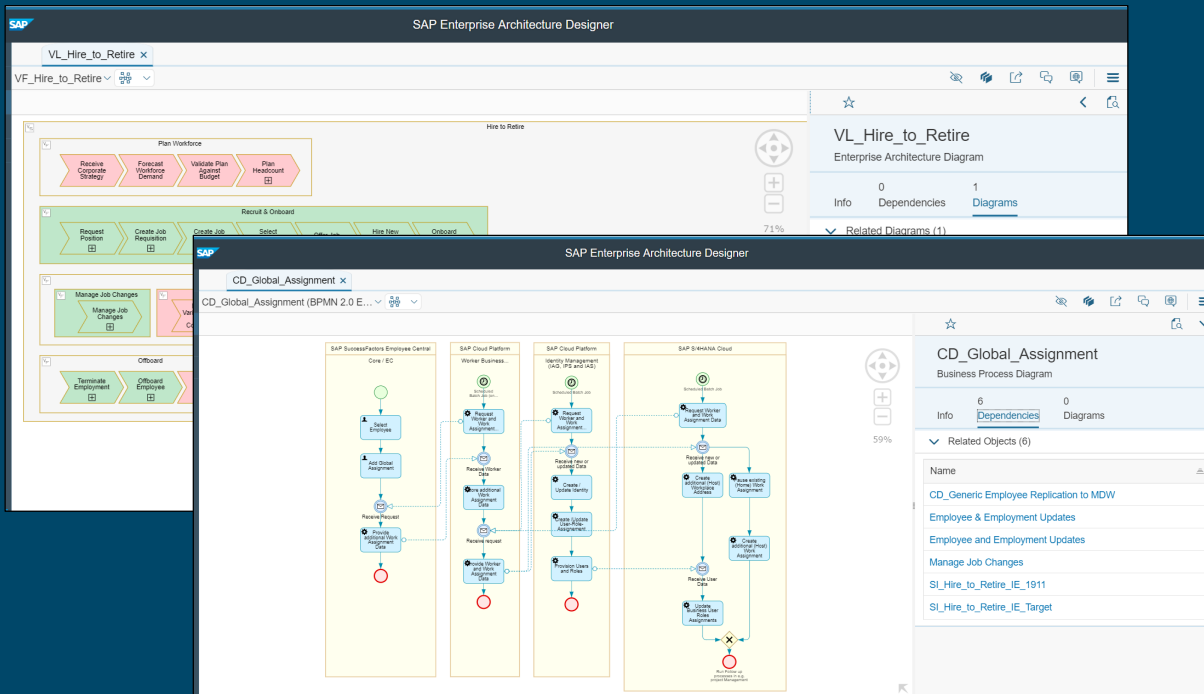
Reference Architecture



Reference architecture

End-to-end process models – **descriptive & linked to runtime artifacts**

Reference
Architecture



Example: Total Workforce Management (Hire to Retire)

Objective

- Provide a consistent overview on E2E processes supported by the Intelligent Suite

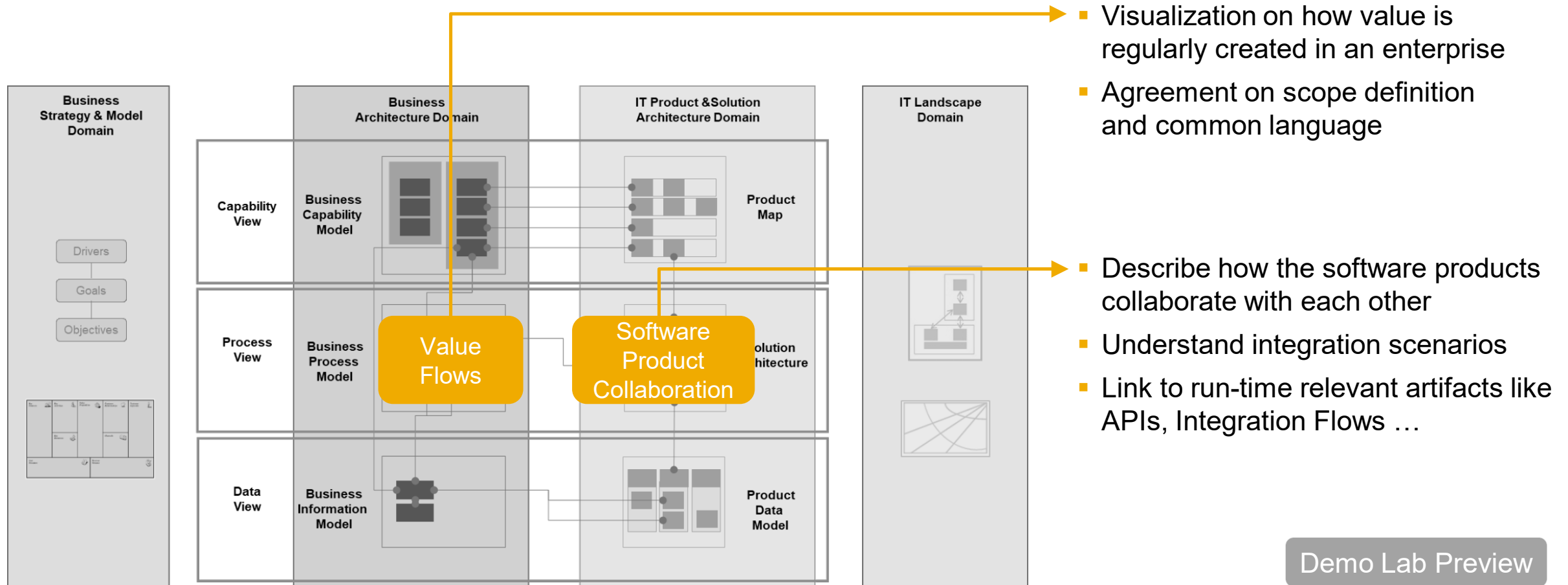
Use Cases for Enterprise Architects

- Explore how E2E scenarios decompose into applications, modules, business services, technologies and integrations
- Map out the roadmap to adopt the solution and transition from current solution landscape to target
- Implement E2E scenarios which are connected with runtime artifacts

Reference architecture

Outlook: SAP delivered models in SAP API Business Hub

Reference
Architecture



Demo Lab Preview



iENT200

Technology Guideline

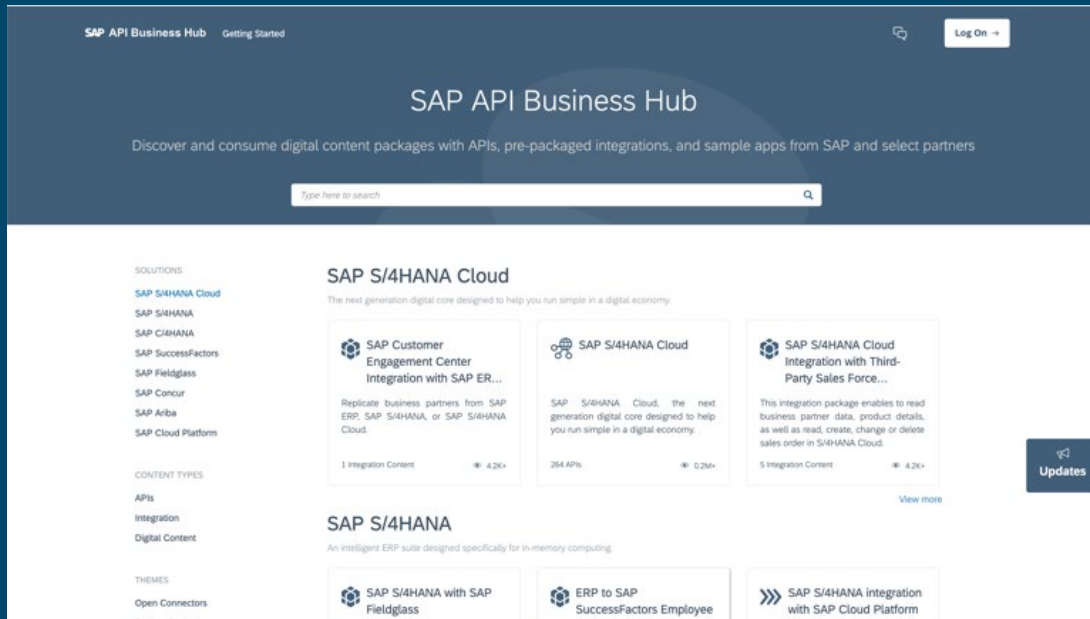
Core Integration



Core Integration

Out-of-the-box integration based on **harmonized APIs** and **domain models**

Core
Integration



<https://api.sap.com>

Objective

- Simplify SAP-2-SAP integrations for the Intelligent Suite by aligned domain models and common integration patterns

Approach

- Semantic alignment of domain models across SAP applications will result in aligned APIs in SAP API Business Hub
- Central master data services on SAP Cloud Platform to simplify the synchronization of master data across SAP applications
- Simplified, pre-packaged integrations based on standardized integration patterns

Central master data services

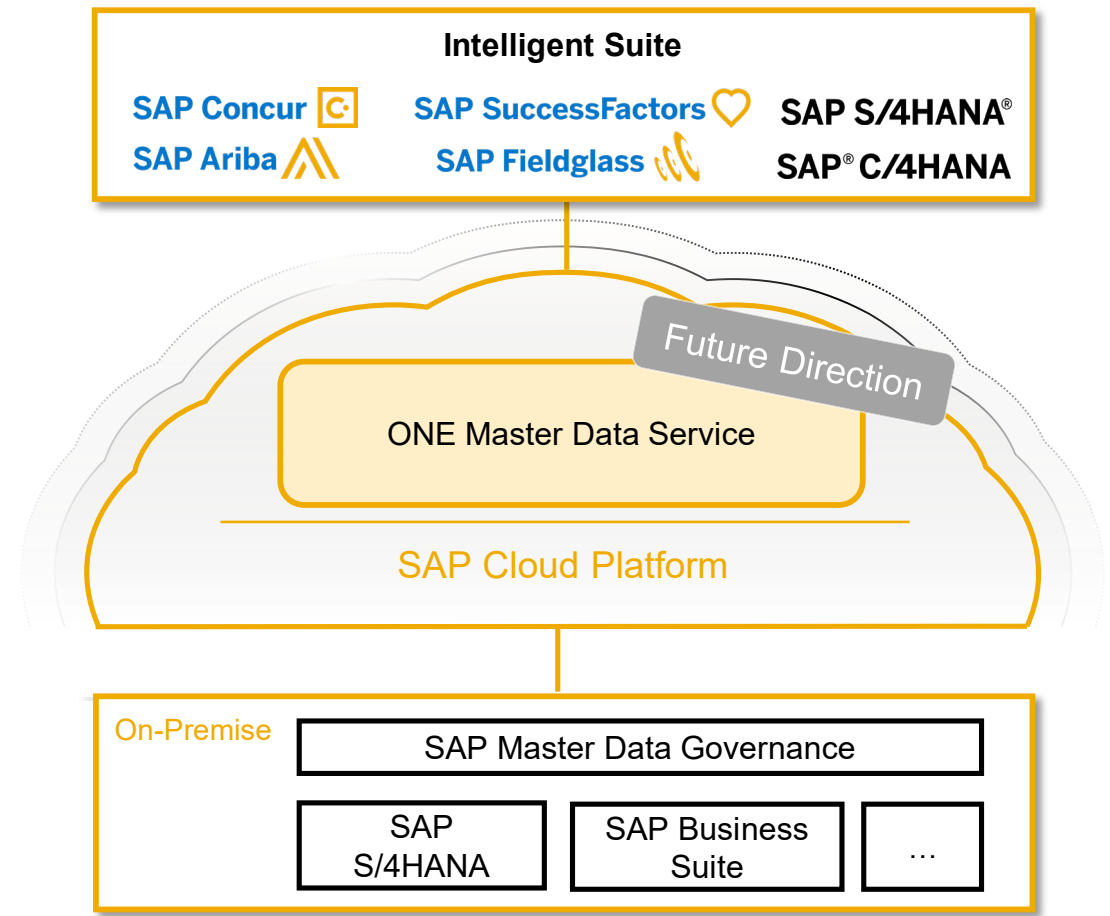
Future direction: **Intelligent sharing** of master data in the cloud

Core
Integration



Source: DSAG

Semantically aligned data models will provide
the foundation for the Intelligent Suite

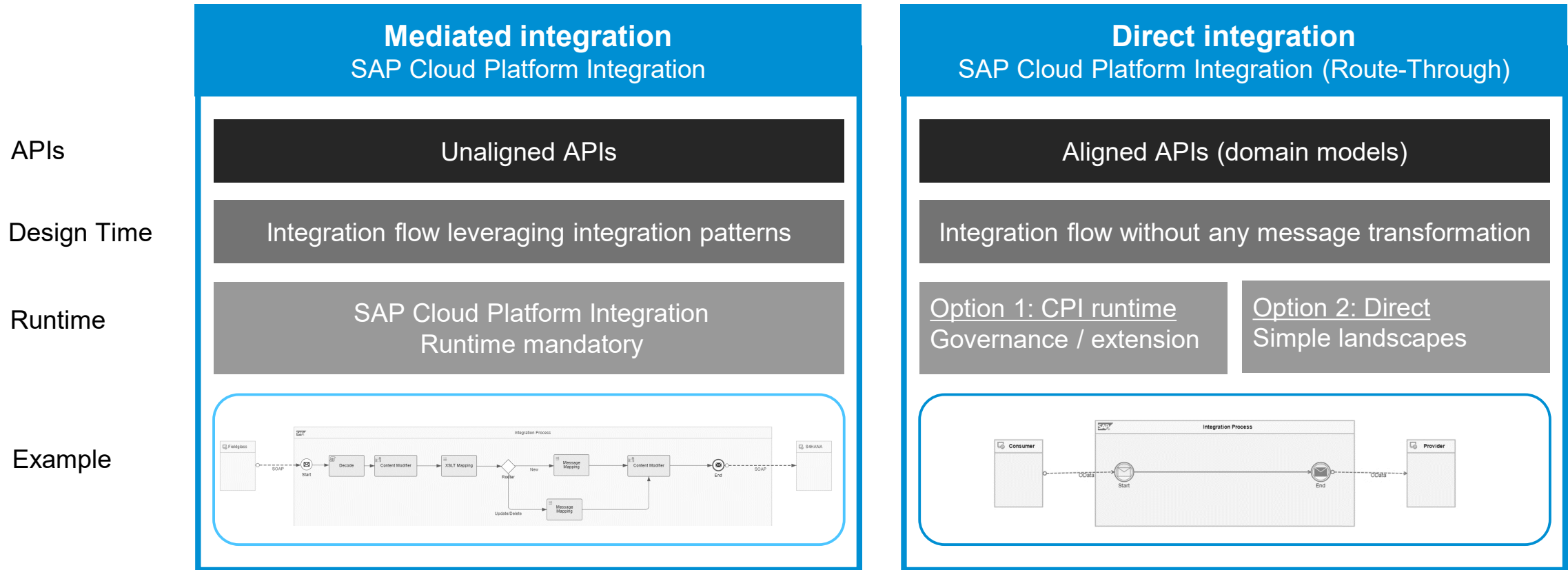


INT300

Process integration for the Intelligent Suite

SAP Cloud Platform Integration for cloud and hybrid integration

Core
Integration

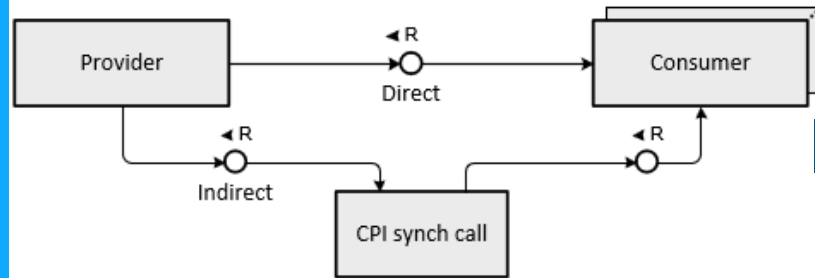


Simplification of integration scenarios

Process integration for the Intelligent Suite

Three Base Patterns

Core
Integration



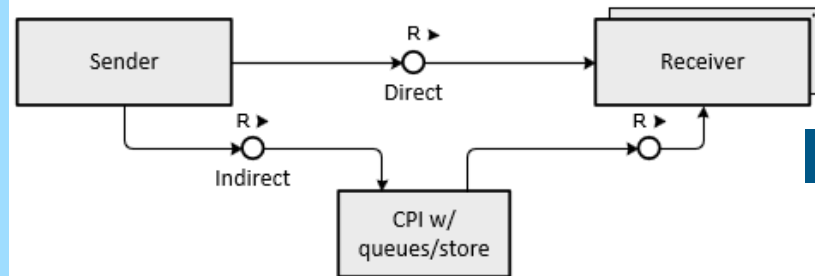
PULL PATTERN

Sync Request/Response

Consumer driven

Strengths: Authorization, Simplicity

Weaknesses: Polling, Provider Performance



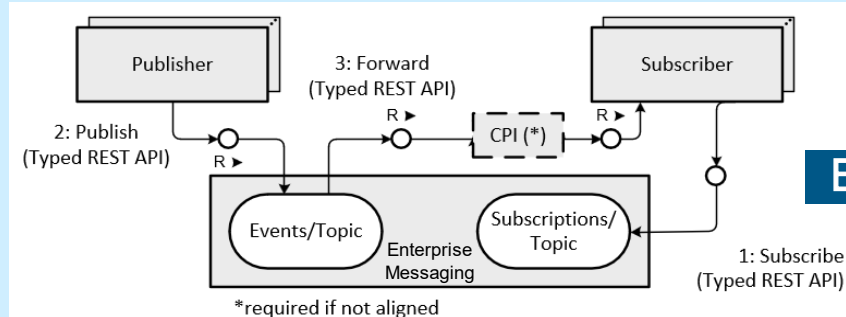
PUSH PATTERN

Async Messaging with QualityOfService

Sender driven

Strengths: Control, Decoupling

Weaknesses: Queues/Retry, Static Routing



EVENT PATTERN

Push Pattern with Publish&Subscribe

Publisher&Subscriber driven

Strengths: Flexibility, Decoupling

Weaknesses: Authorization, Audit Logging

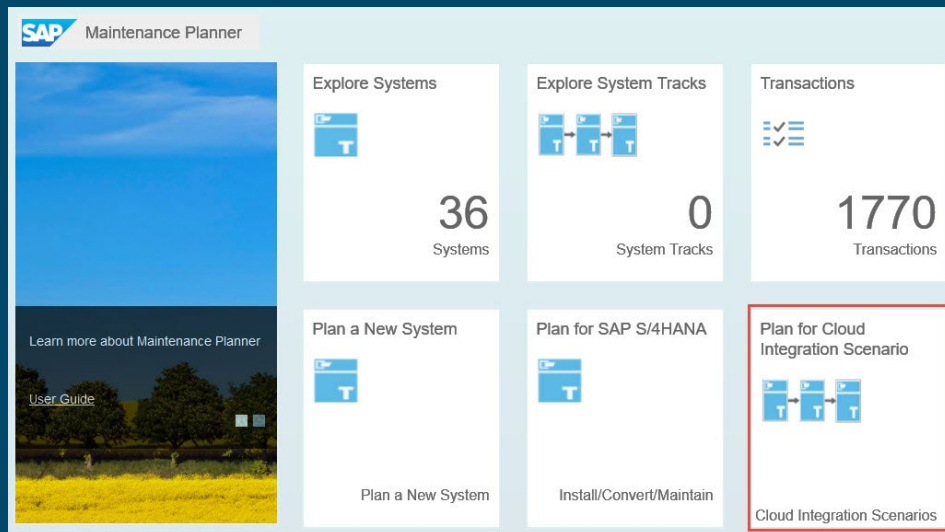
Technology Guideline

Application Lifecycle Management



Application Lifecycle Management

Optimized and harmonized across the Intelligent Suite



Example: Cloud Integration Automation Service

Objective

- Provide a consistent application provisioning and operations approach across the Intelligent Suite

Approach

- Automated provisioning of SAP applications and automated setup of integration scenarios
- Centralized integration monitoring infrastructure
- Harmonized release and maintenance schedules

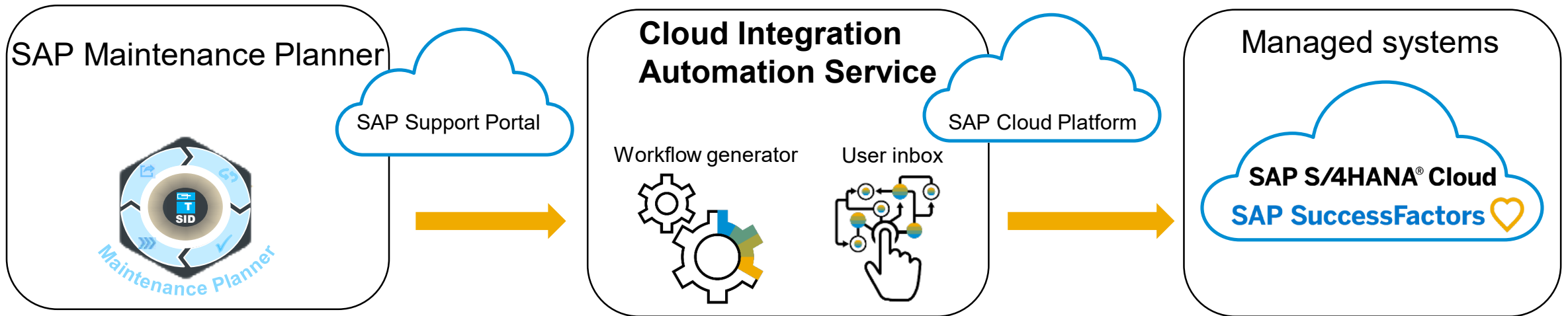
Cloud Integration Automation Service

Guided implementation of integration scenarios across your application landscape

Application
Lifecycle
Management



1. In SAP Maintenance Planner: Choose an **integration scenario** and select the right systems.
2. Use the Cloud Integration Automation Service to generate a **role based workflow** with predefined tasks.
3. In SAP Cloud Platform workflow: **Assign the tasks** to the right experts.
4. **Process the tasks** from the workflow in the managed systems.



INT384

Cloud Integration Automation Service

Example: +30 scenarios available for SAP S/4HANA Cloud Integration

Application
Lifecycle
Management



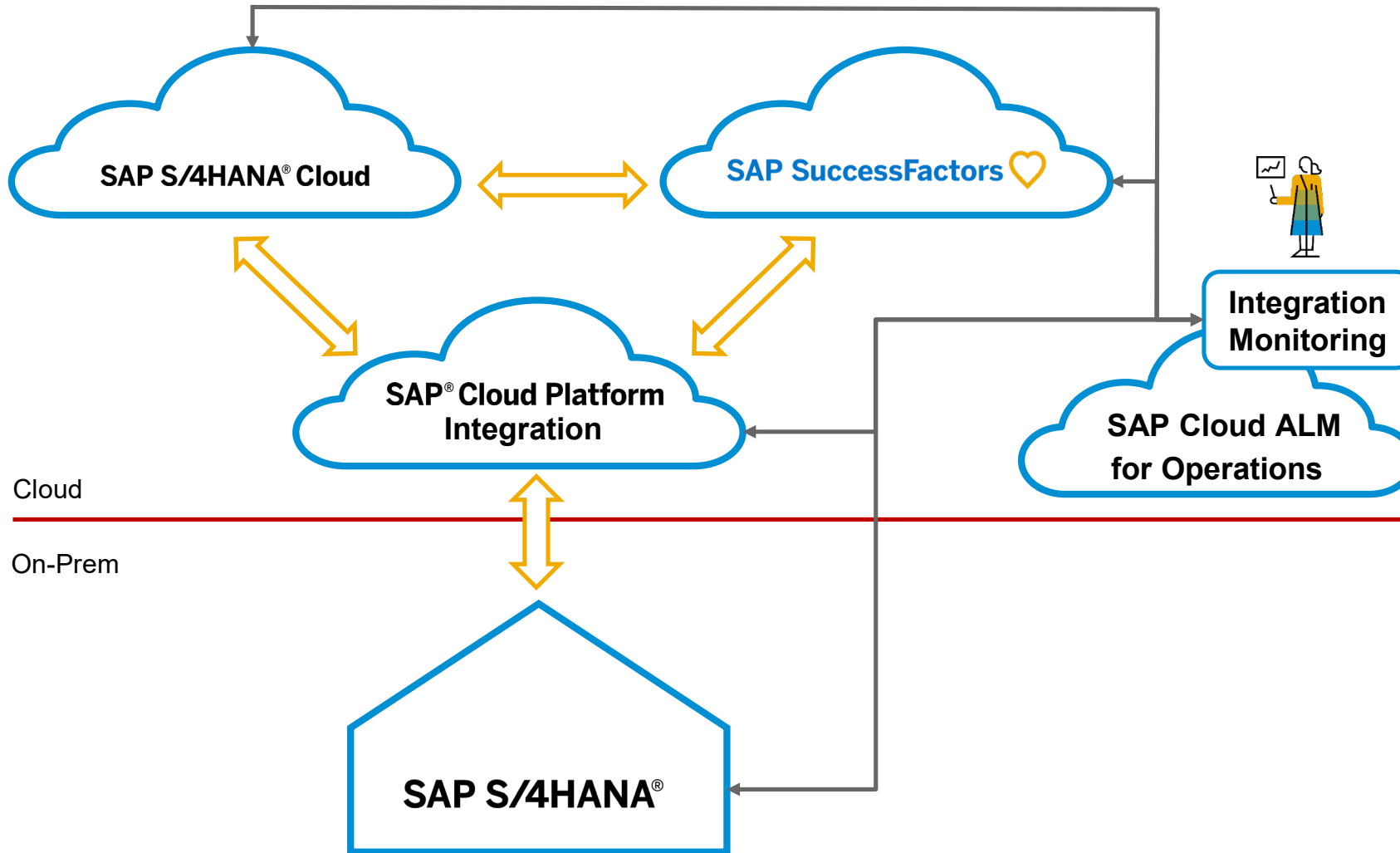
Cloud Integration Automation Service

- Automated Dynamic Discounts with SAP Ariba Discount Management (19O)
- Automated Provisioning via SAP Cloud Identity Access Governance (3AB)
- Automated Purchase to Pay with SAP Ariba Commerce Automation (J82)
- Automation of Purchase-to-Pay with Ariba Network (42K)
- Concur Financial Integration (1M1)
- Continuous Control Monitoring with SAP Process Control (2OH)
- Credit Agency Integration (1RY)
- Guided Buying Capability with SAP Ariba Buying (2NV)
- Guided Buying for Central Procurement with SAP Ariba Buying (3EN)
- Integration of Payment Advice with Buyers and Suppliers (2MB)
- Integration of Procurement with External Suppliers (2EJ)
- Integration of Sales with External Buyers (2EL)
- Integration SAP S/4HANA Cloud and SAP Analytics Cloud (1YB)
- Integration with SAP Distributed Manufacturing with SAP S/4HANA Cloud (1NX)
- Leverage SAP Financial Statement Insights and SAP RealSpend Integration (1KU)
- Procure-to-Pay with SAP Ariba Buying and Invoicing (1ZM)
- Sales Billing with SAP Subscription Billing (2AP)
- SAP Ariba Sourcing Integration (1A0)
- SAP SuccessFactors Employee Central Integration (JB1)
- SAP Watch List Screening (1WE)
- Service Procurement Integration (22K)
- Setting Up C4C S/4HANA Cloud Integration (1VP)
- Setting Up Customs Mgmt with SAP GTS (2U1)
- Setting UP External Billing (1Z6)
- Setting Up Key Risk Indicator Monitor with SAP Risk Management (2U2)
- Setting Up SAP Digital Payments Add-on - Sales (1Z1)
- Set-up Guide for Customer Payments (1S0)
- Set-Up Instructions for SI (1ZQ)
- SuccessFactors Employee Central Payroll Integration (1NL)
- Supplier Quote Automation with SAP Ariba Commerce Automation (1L2)



SAP Cloud ALM for Operations – Integration Monitoring

Consistent integration monitoring for the Intelligent Enterprise



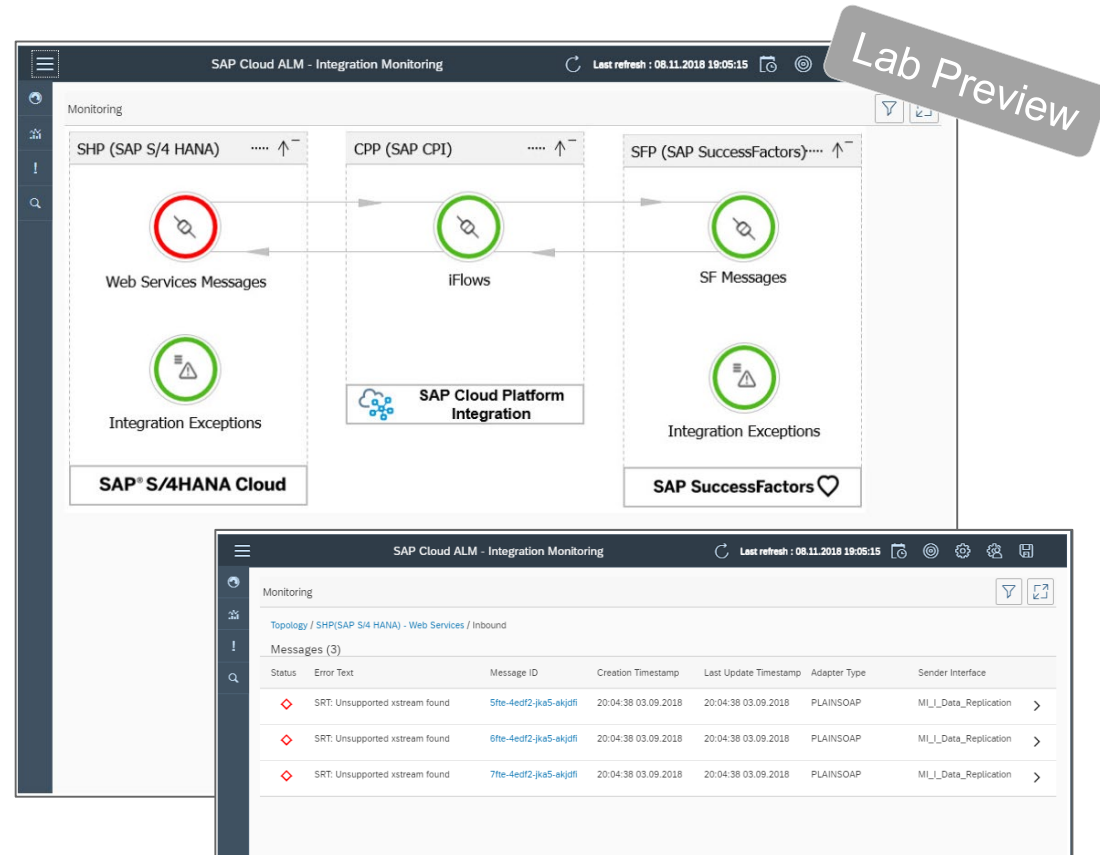
- Ensures reliable data exchange processes at application level in cloud-only and hybrid scenarios
- Provides end-to-end monitoring across SAP cloud services and applications based on SAP Passport mechanism
- Closes gap between business and IT during issue resolution process (technical issue vs. business issue)

SAP Cloud ALM for Operations – Integration Monitoring

Example I: Monitoring and Alerting

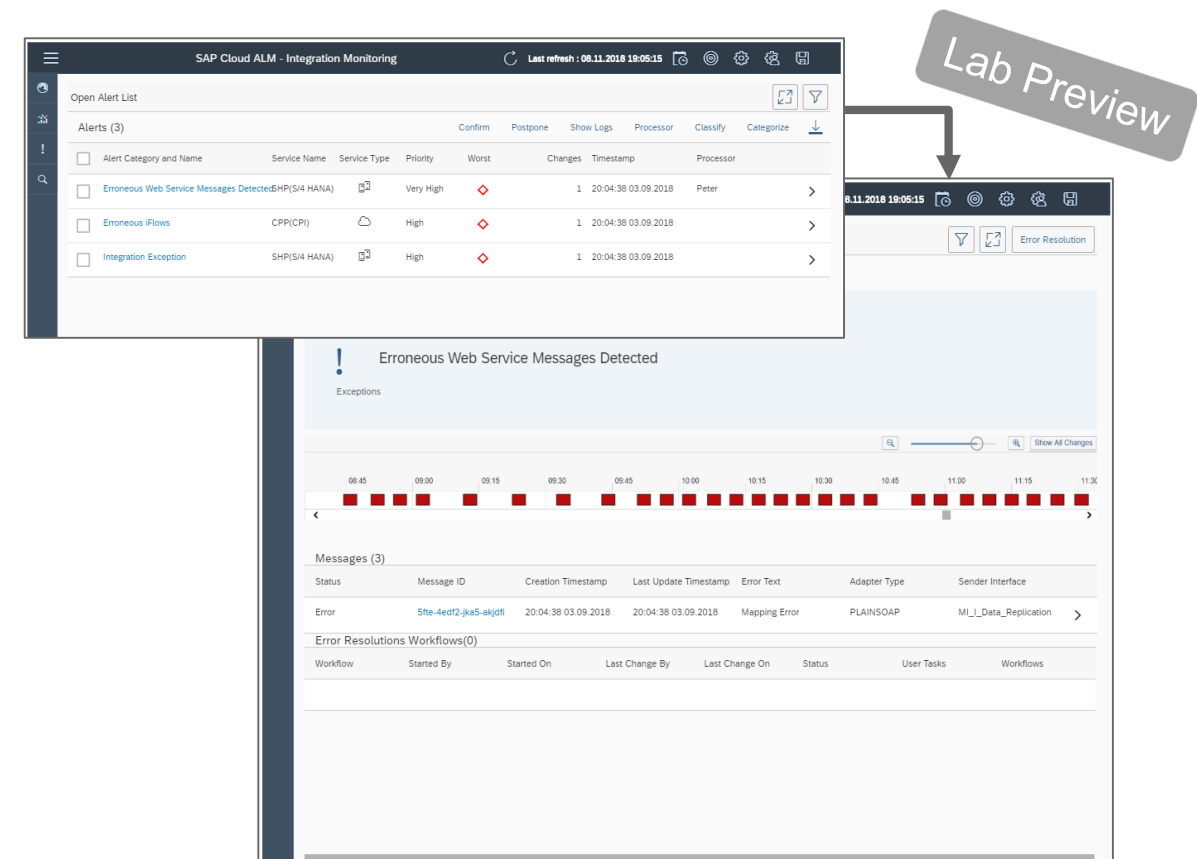
Monitoring

What is the status of my integration scenario?



Alerting

Are there any integration scenario related issues?



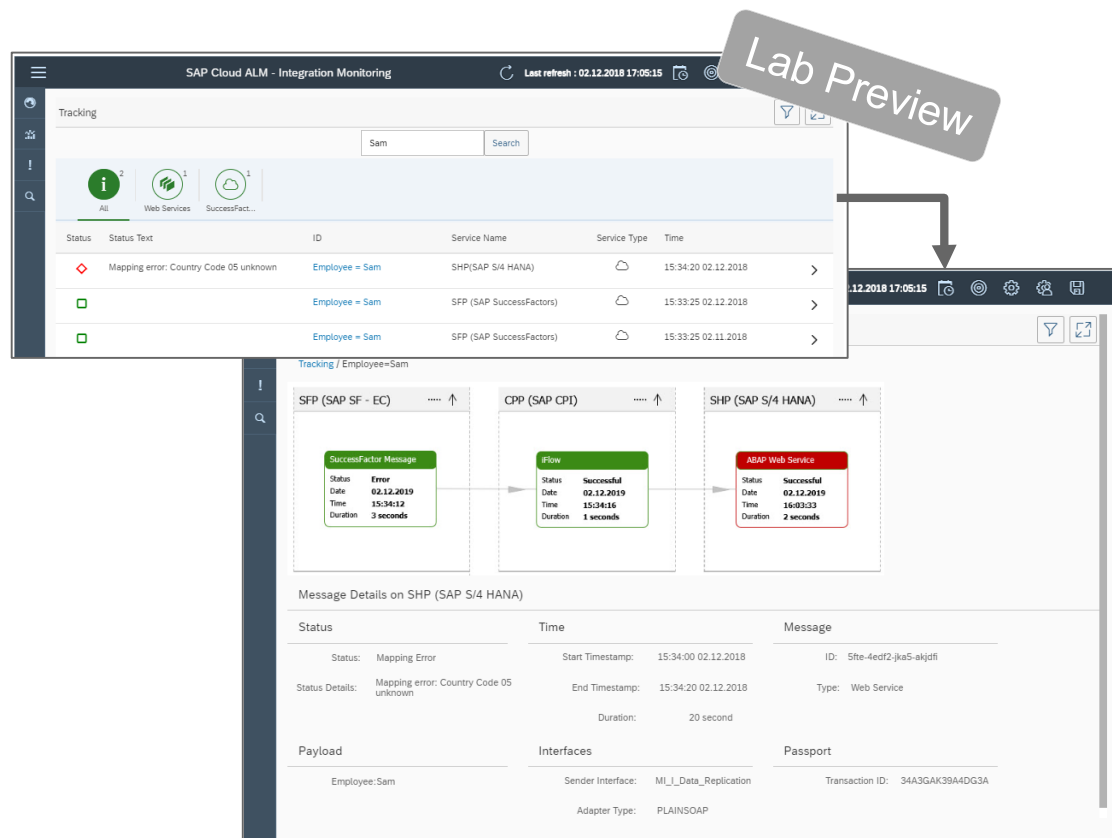
SAP Cloud ALM for Operations – Integration Monitoring

Example II: Tracking and Analytics



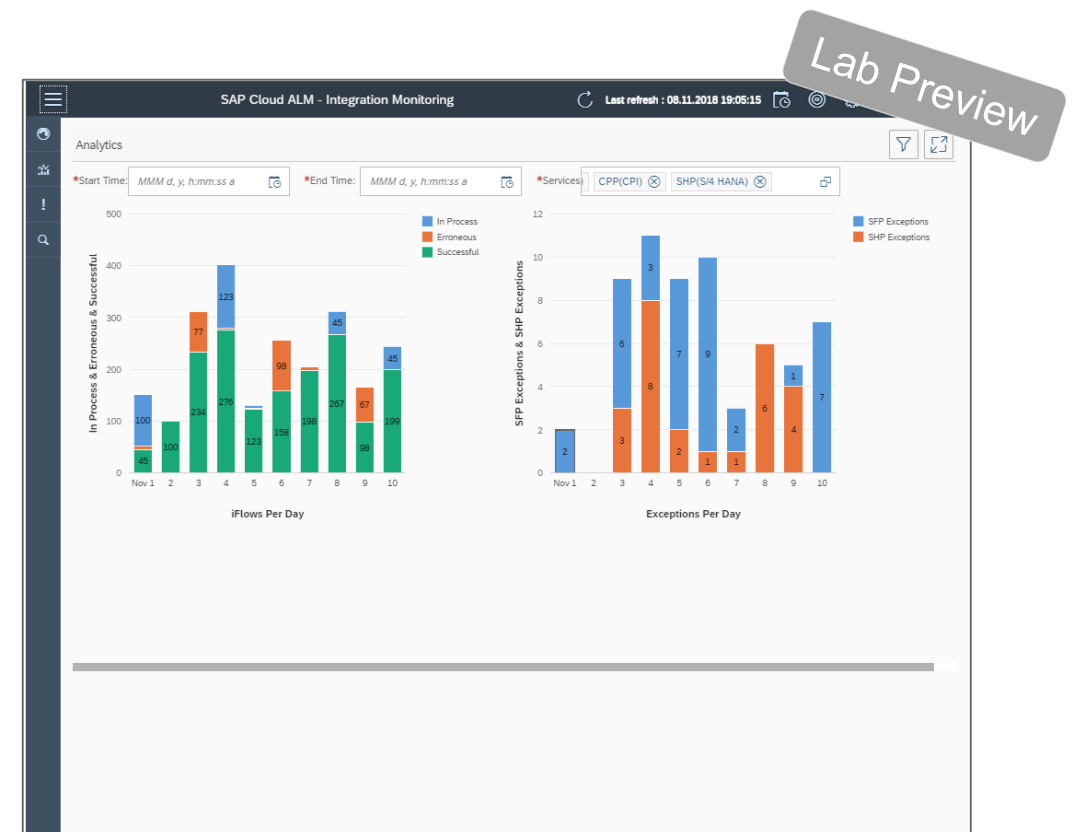
Tracking

Where is my message?



Analytics

How can I improve my integration scenario?



Technology Guideline

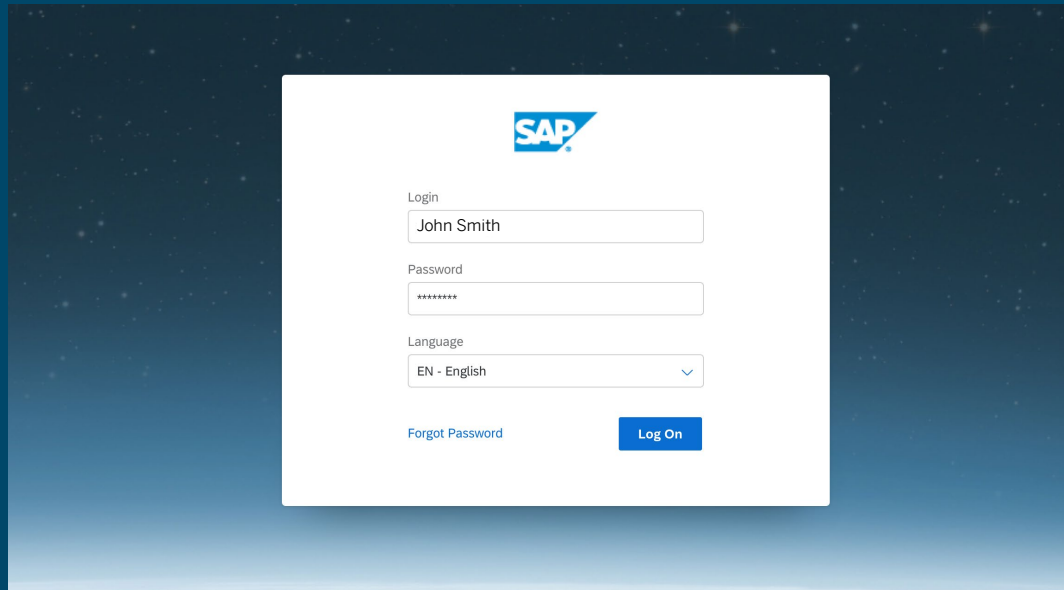
Security & Identity Management



Security and Identity Management

Enable **central identity provisioning and authentication** across the Intelligent Suite

Security & Identity
Management



Single Sign On Experience for the Intelligent Suite

Objective

- Enable a seamless and consistent identity provisioning and authentication procedure for the Intelligent Suite

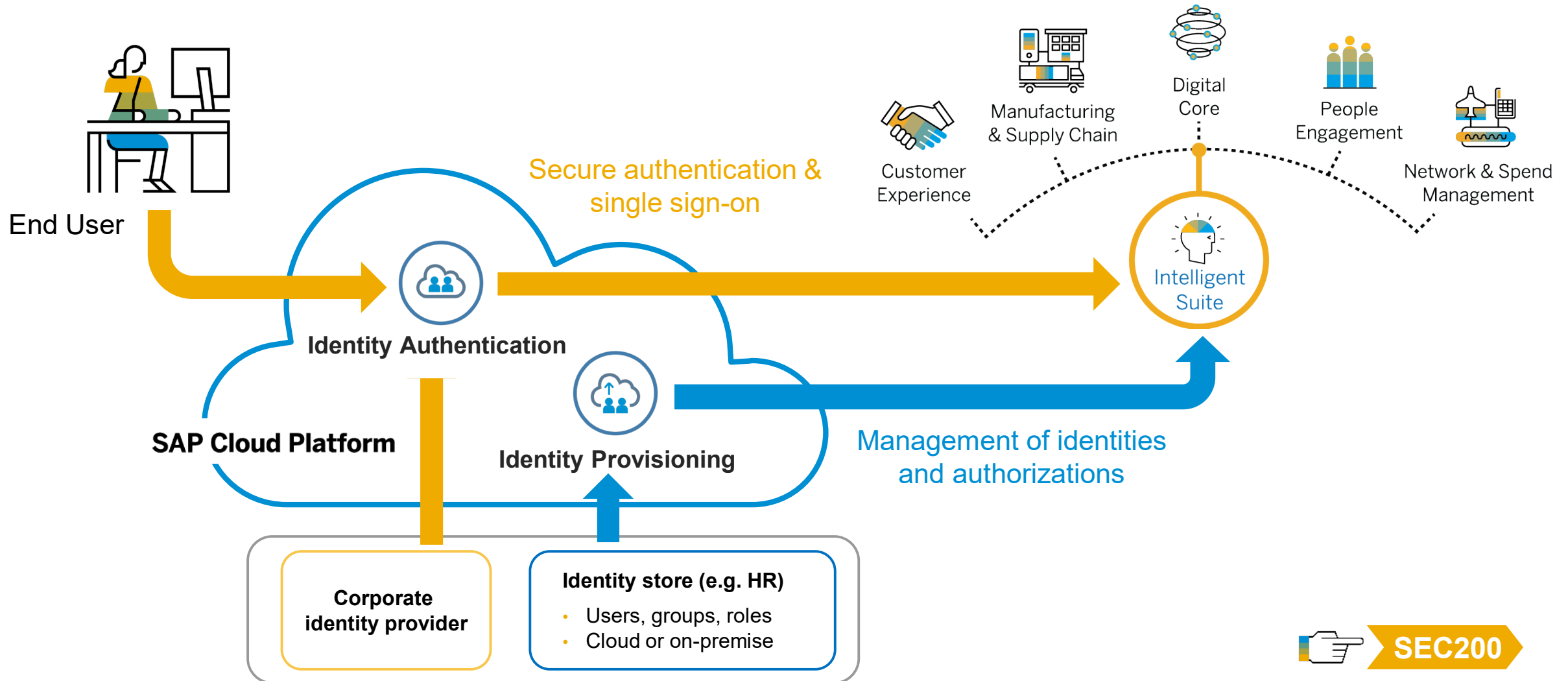
Approach

- Single Sign On for business users to execute all steps end-to-end for a specific business process.
- Define which users have access to which applications in a single place
- Ensure compliance by changing or revoking user access centrally

SAP Cloud Platform Identity Provisioning & Authentication Support

Enabling central **identity provisioning** and **authentication**

Security & Identity
Management



SEC200

Technology Guideline

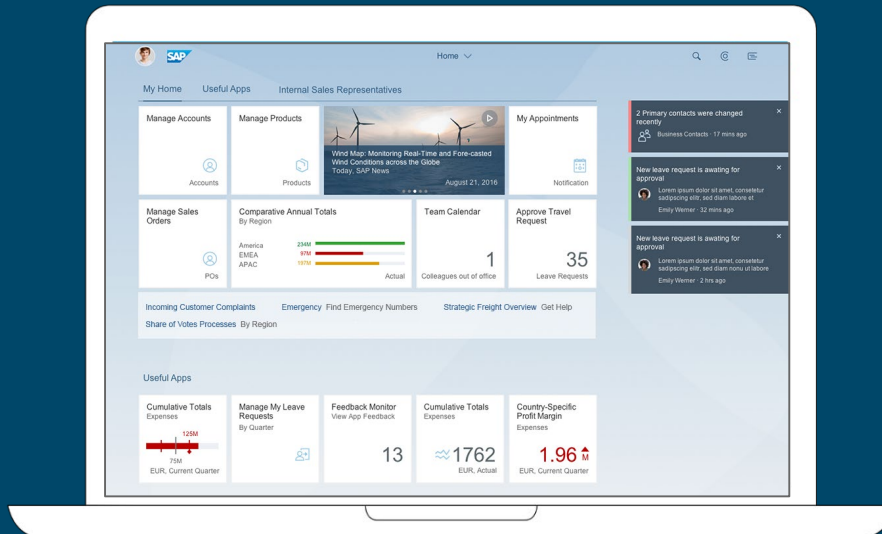
Experience



Experience

Enable a **consistent user experience** across the Intelligent Suite

Experience



Objective

- Provide users with a consistent user experience even when working with multiple applications to fulfill a task

Approach

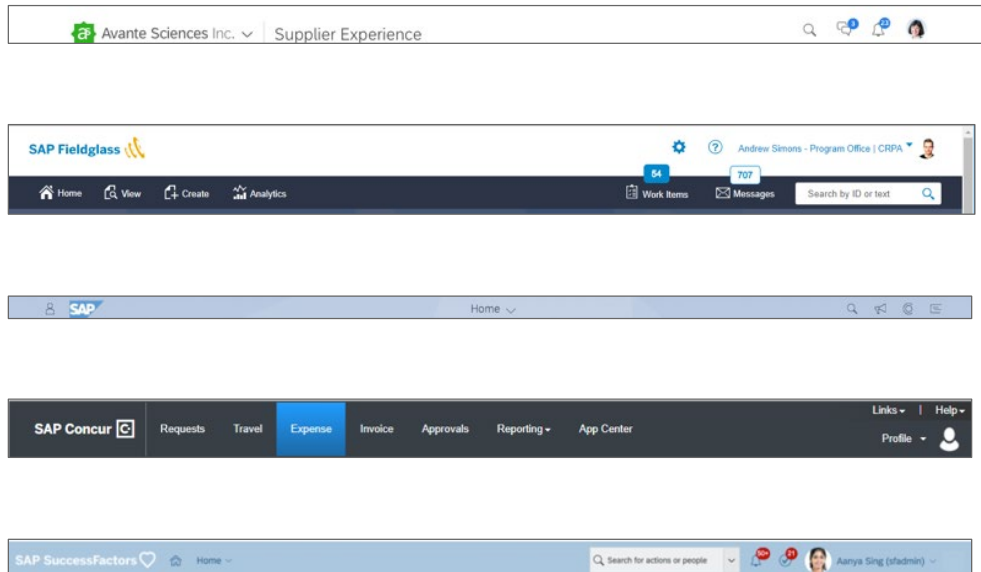
- Consistent look and feel across applications
- Seamless navigation across applications
- Provide contextual guidance in solving tasks
- Consistent adoption of Fiori Design Guidelines

Consistent look & feel across the Intelligent Suite

Example I: Shell bar (SAP Fiori 3)

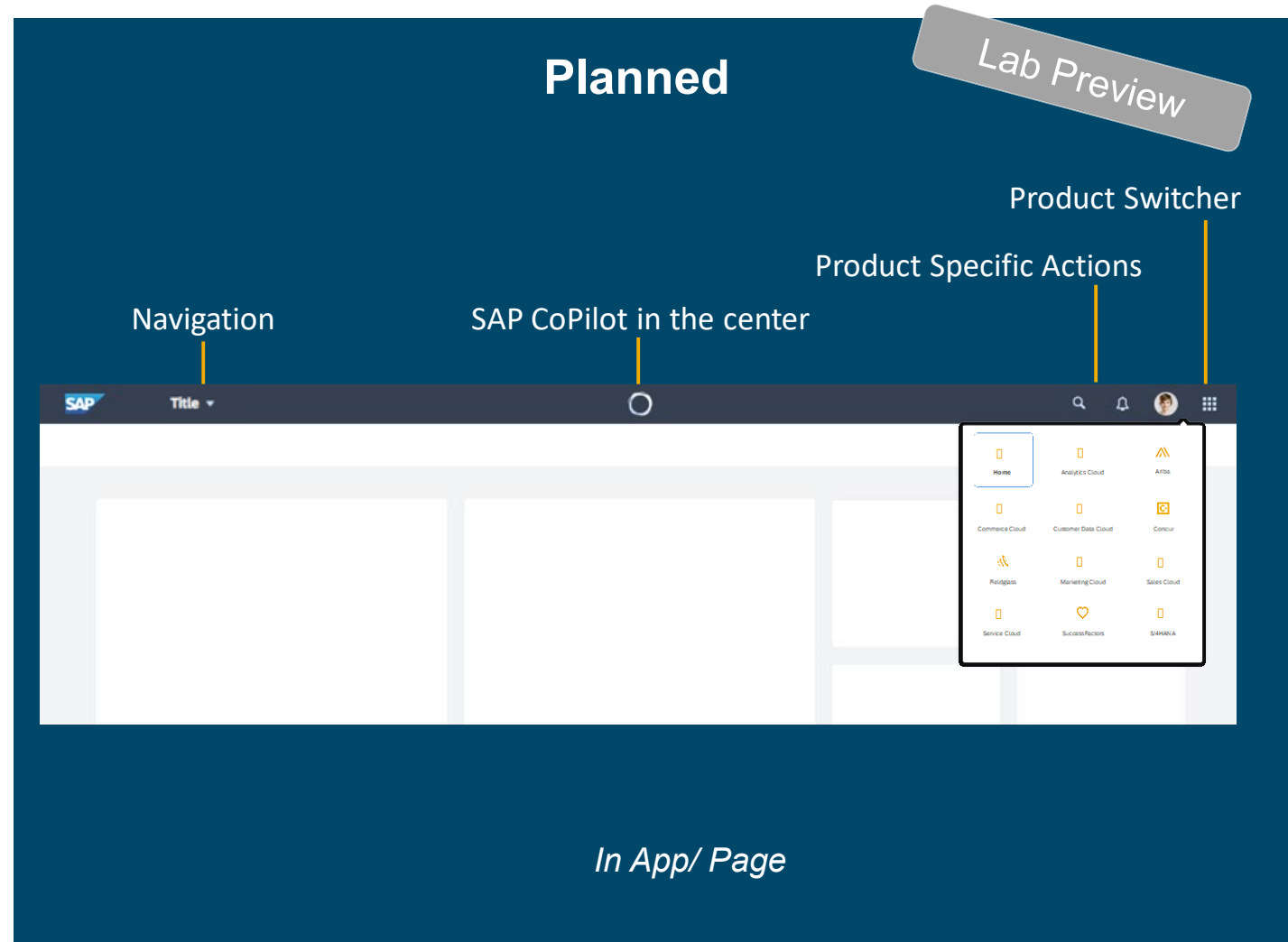


Today



Planned

Lab Preview



Manage all workflow tasks across the Intelligent Suite

Example II: Central inbox

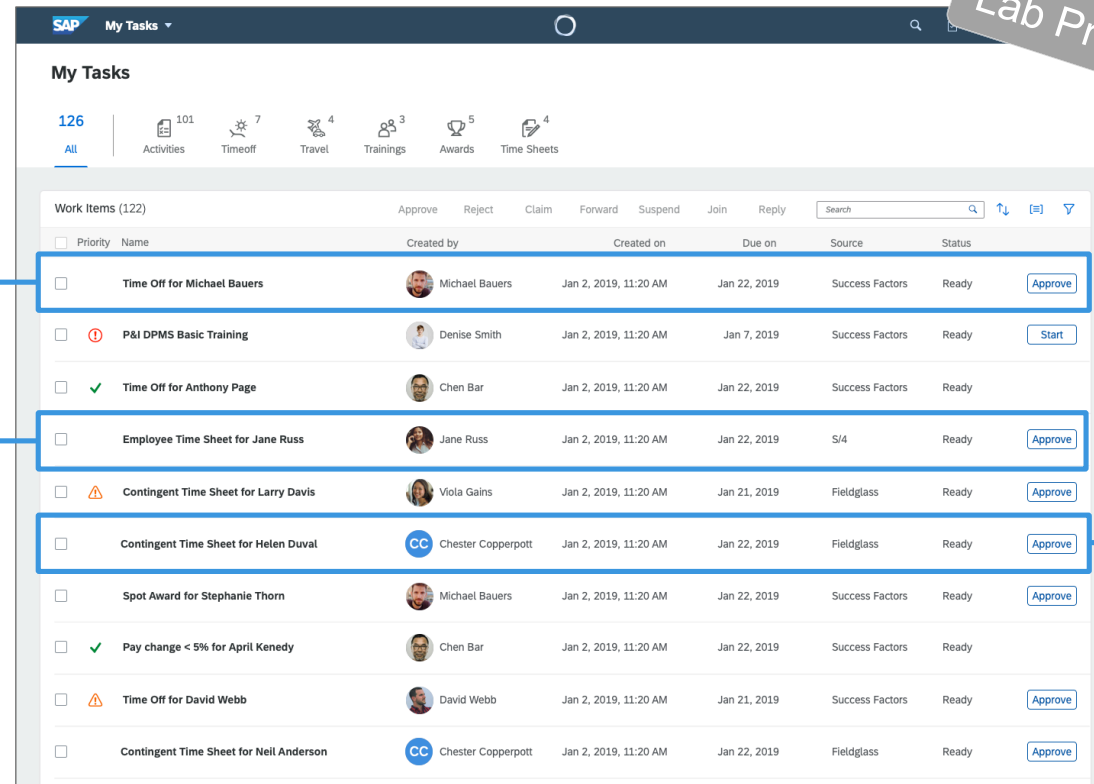
Experience



SAP SuccessFactors 

SAP S/4HANA® Cloud

Lab Preview



| Work Items (122) | | | | | | | Approve | Reject | Claim | Forward | Suspend | Join | Reply | Search | Filter | Sort |
|------------------|---|-----------------------|-----------------------|--------------|-----------------|--------|---------|--------|-------|---------|---------|------|-------|--------|--------|------|
| Priority | Name | Created by | Created on | Due on | Source | Status | | | | | | | | | | |
| | Time Off for Michael Bauers | Michael Bauers | Jan 2, 2019, 11:20 AM | Jan 22, 2019 | Success Factors | Ready | Approve | | | | | | | | | |
| | P&I DPMS Basic Training | Denise Smith | Jan 2, 2019, 11:20 AM | Jan 7, 2019 | Success Factors | Ready | Start | | | | | | | | | |
| | Time Off for Anthony Page | Chen Bar | Jan 2, 2019, 11:20 AM | Jan 22, 2019 | Success Factors | Ready | | | | | | | | | | |
| | Employee Time Sheet for Jane Russ | Jane Russ | Jan 2, 2019, 11:20 AM | Jan 22, 2019 | S/4 | Ready | Approve | | | | | | | | | |
| | Contingent Time Sheet for Larry Davis | Viola Gains | Jan 2, 2019, 11:20 AM | Jan 21, 2019 | Fieldglass | Ready | Approve | | | | | | | | | |
| | Contingent Time Sheet for Helen Duval | CC Chester Copperpott | Jan 2, 2019, 11:20 AM | Jan 22, 2019 | Fieldglass | Ready | Approve | | | | | | | | | |
| | Spot Award for Stephanie Thorn | Michael Bauers | Jan 2, 2019, 11:20 AM | Jan 22, 2019 | Success Factors | Ready | Approve | | | | | | | | | |
| | Pay change < 5% for April Kenedy | Chen Bar | Jan 2, 2019, 11:20 AM | Jan 22, 2019 | Success Factors | Ready | | | | | | | | | | |
| | Time Off for David Webb | David Webb | Jan 2, 2019, 11:20 AM | Jan 21, 2019 | Success Factors | Ready | Approve | | | | | | | | | |
| | Contingent Time Sheet for Neil Anderson | CC Chester Copperpott | Jan 2, 2019, 11:20 AM | Jan 22, 2019 | Fieldglass | Ready | Approve | | | | | | | | | |

SAP Fieldglass 



CAA109

Federation from
tasks across the
Intelligent Suite

Navigation into
target applications

My tasks app for use
with Central Fiori
Launchpad

Public APIs for 3rd
Party Integration

Planned as service
for SAP Cloud
Platform

Technology Guideline

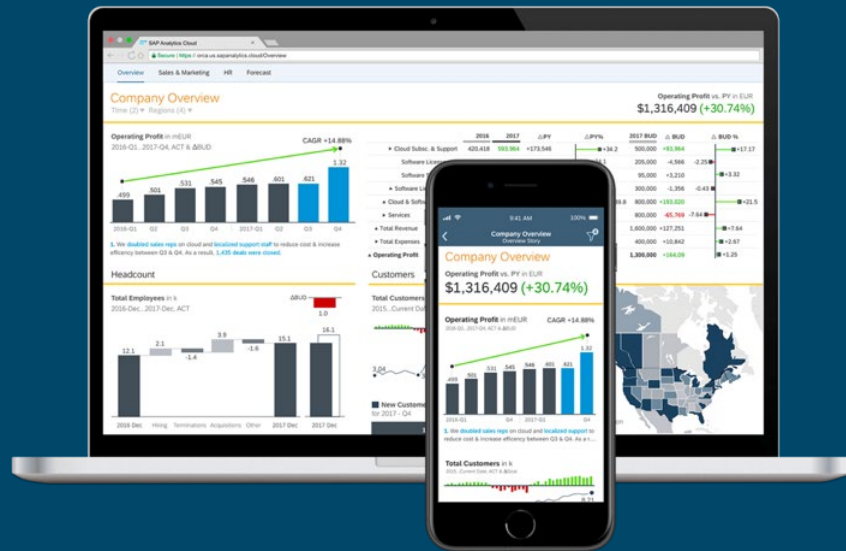
Analytics



Analytics

One technology for dashboards and reporting across the Intelligent Enterprise

Analytics



SAP Analytics Cloud

Objective

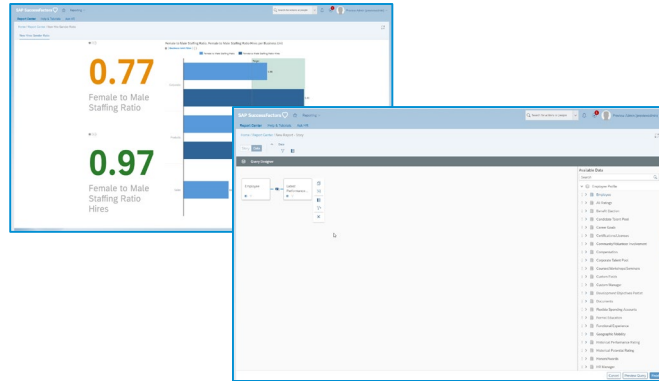
- Provide with SAP Analytics Cloud one consistent approach for all analytical use cases of the Intelligent Suite

Approach

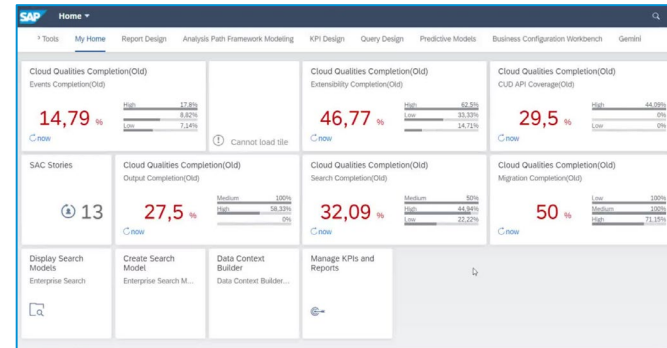
- Embedded Analytics: Users can get analytical insights on the outcomes and progress of business transactions from within the applications.
- Cross Application Analytics: Get insights/data from multiple applications, aggregating across process steps and regional organizations.

Embedded analytics across the Intelligent Suite

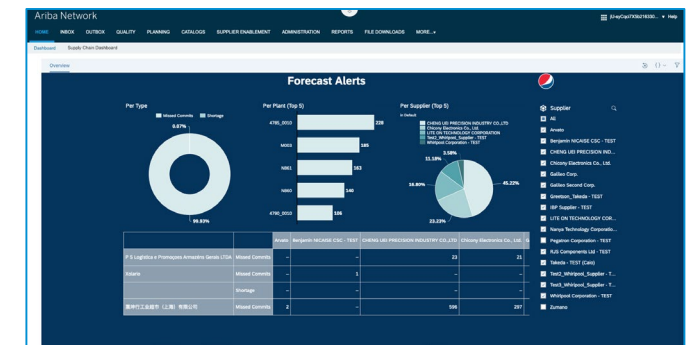
Outlook and Examples



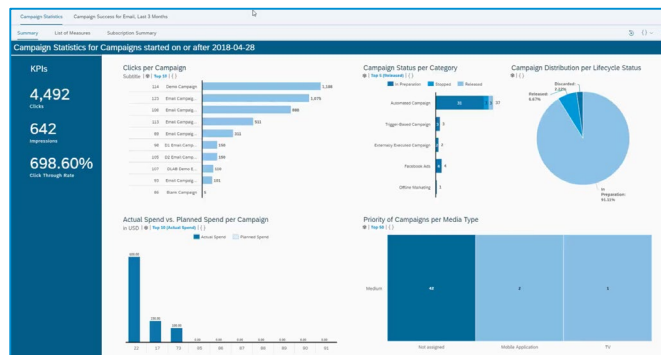
SAP SuccessFactors



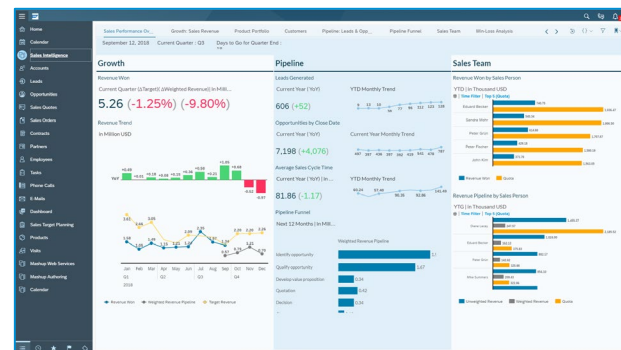
SAP S/4HANA® Cloud



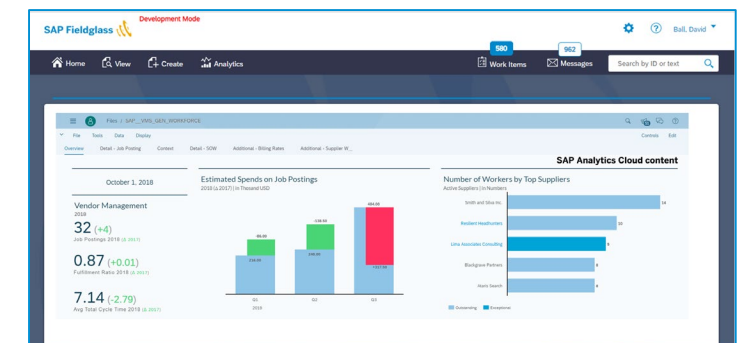
SAP Ariba



SAP C/4HANA
Marketing Cloud



SAP C/4HANA
Sales Cloud



SAP Fieldglass

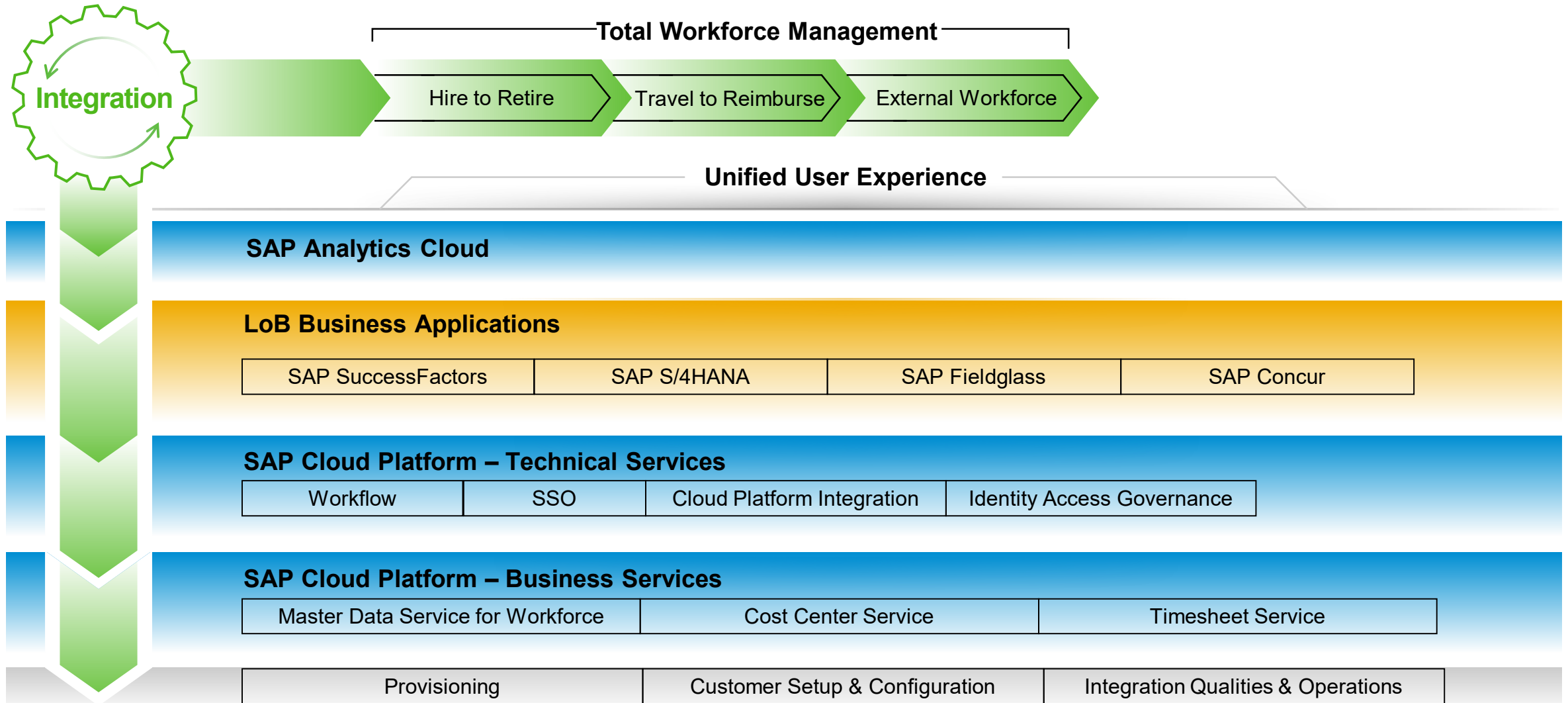
Future Direction



AIN829

Summary: From integration to **integrated business processes**

Example: Direction for Total Workforce Management

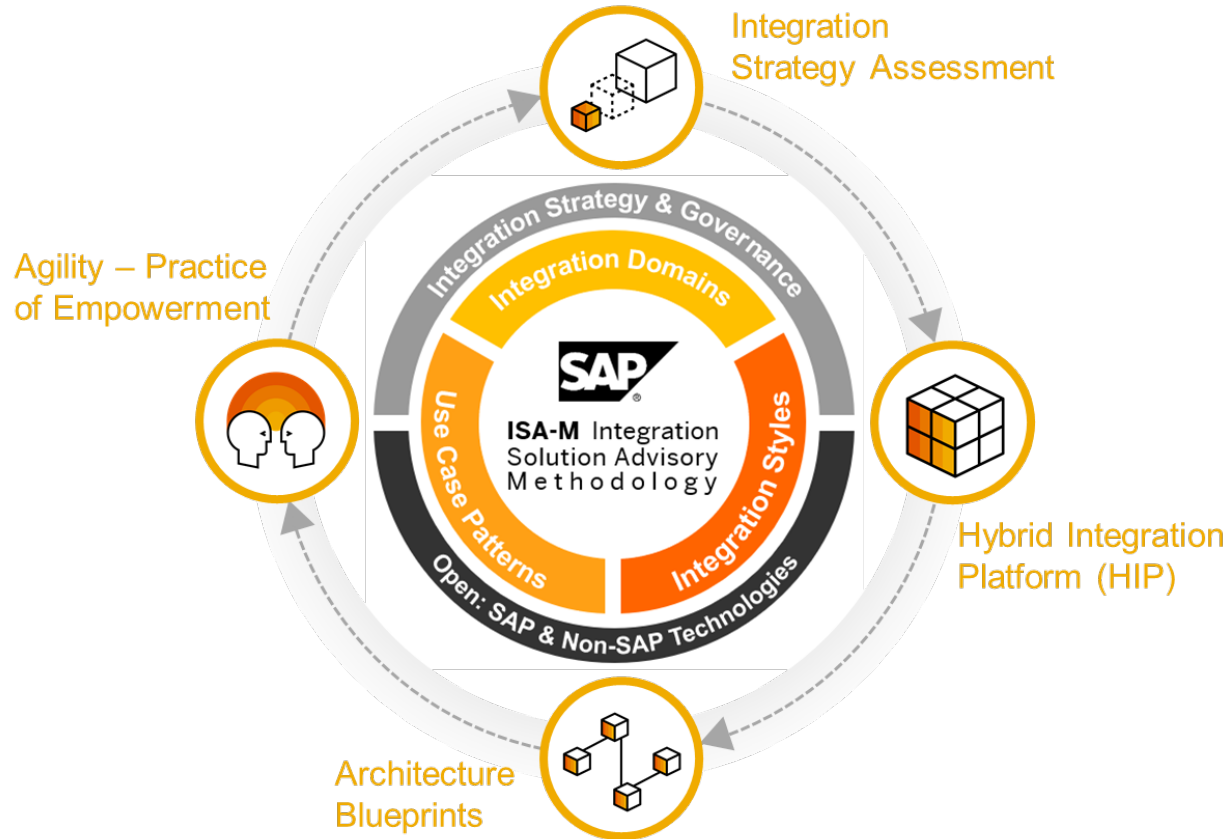


Guidance for Enterprise Architects



Integration Methodology for the Intelligent Enterprise

ISA-M: Integration Solution Advisory Methodology



Overview

- Helps enterprise architects to shape their integration strategy
- Collection of typical integration styles and patterns
- Mapping to integration services (based on customer context)
- Open to SAP and Non-SAP services / technologies
- Target Group: Enterprise Architects / Integration Architects

ISA-M Template

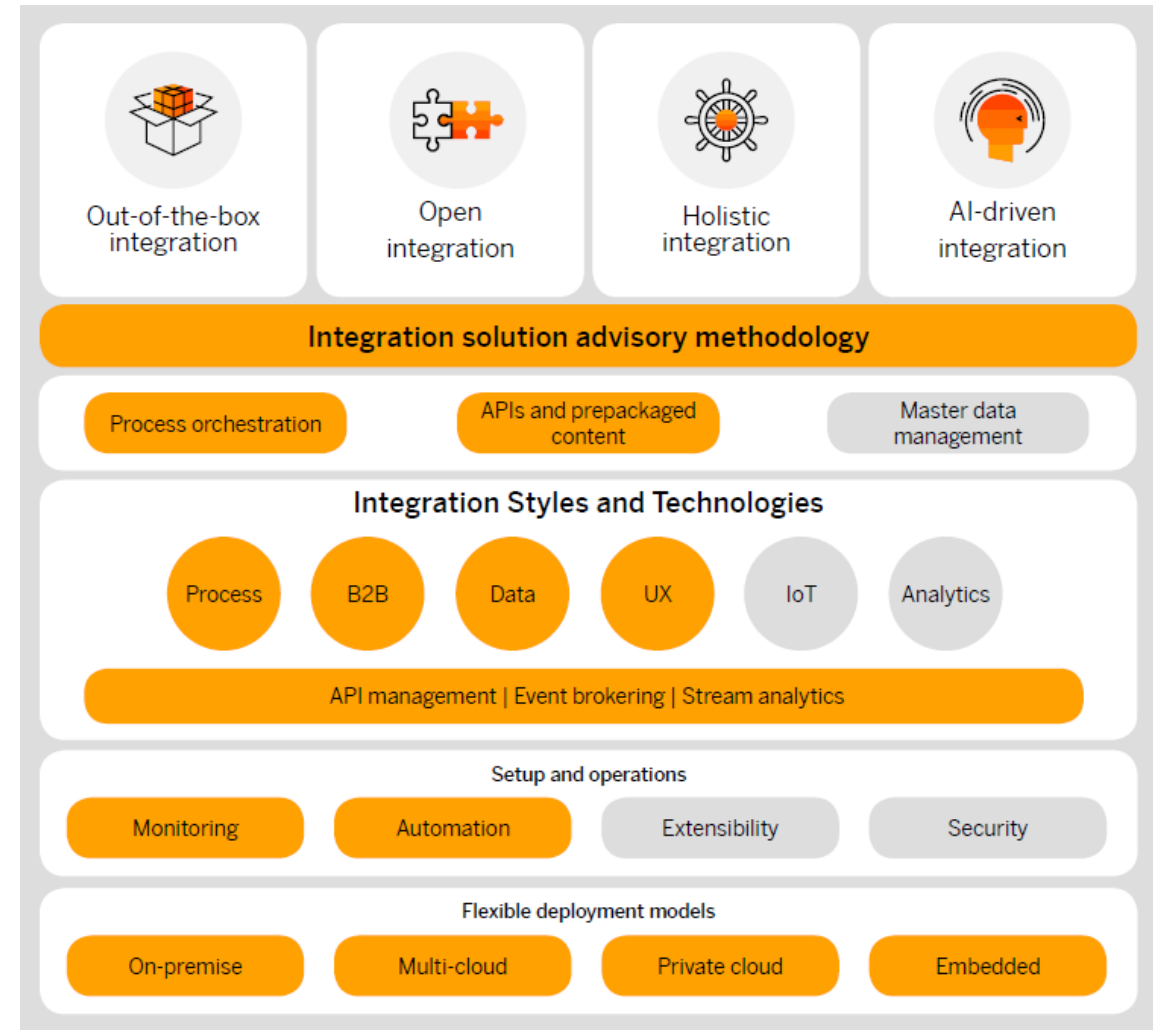
- Free PPT template available
- Successfully adopted in multiple global organizations
- SAP Consulting Services (optional)
- +1.300 registered customers, partners and SAP consultants



INT102

SAP Technology Recommendations

CIO Guide: Process and Data Integration in Hybrid Landscapes

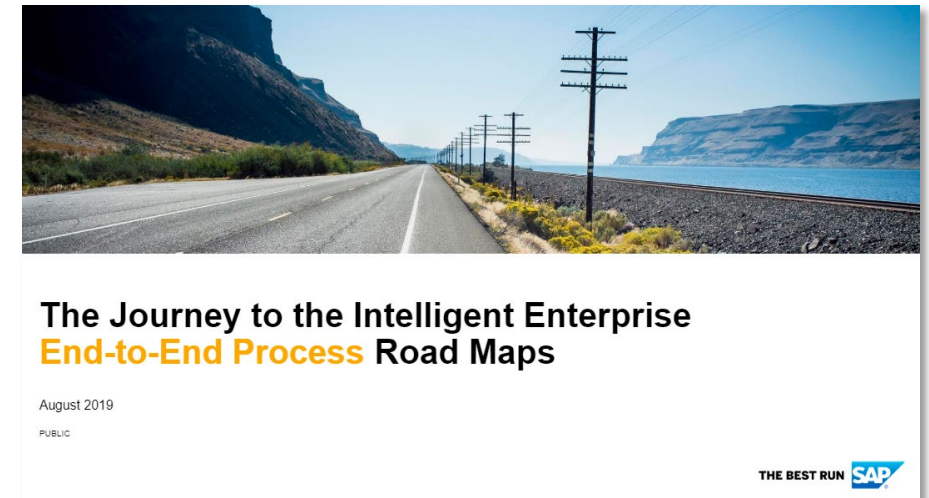
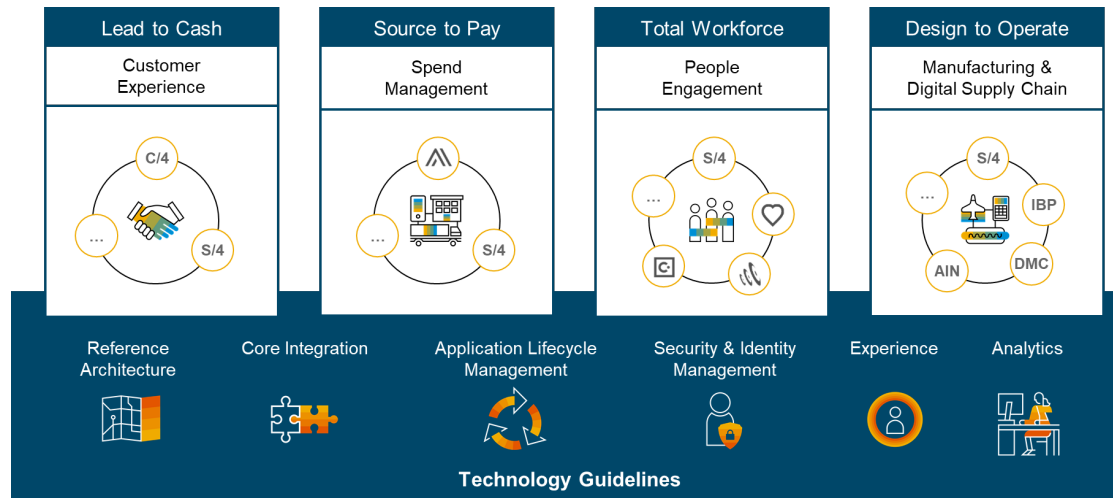


Roadmap and Summary



Roadmap

The journey to the Intelligent Enterprise



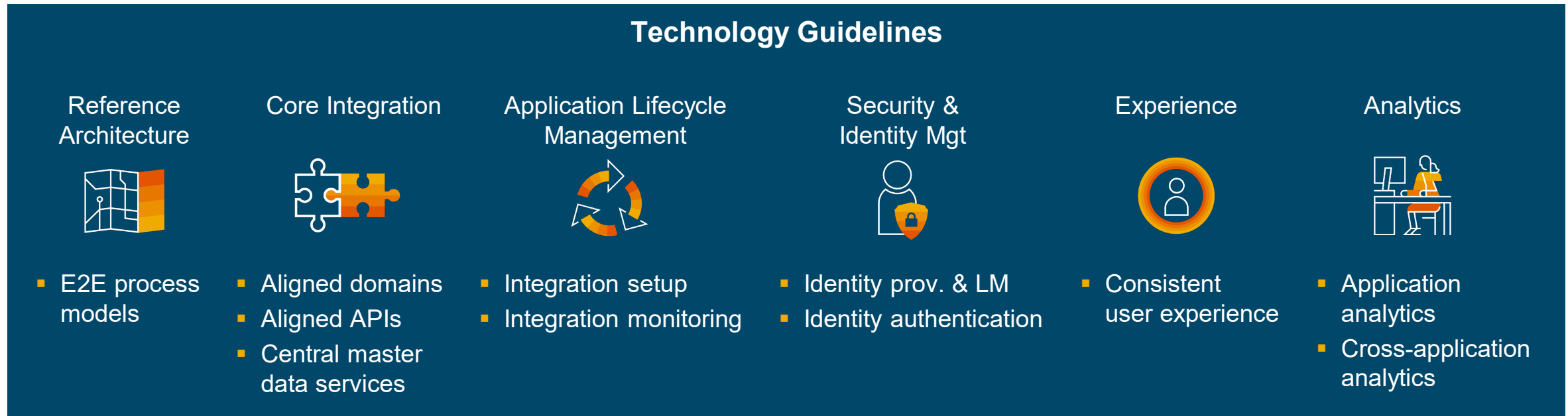
[Download](#)

SAP executes on its Intelligent Enterprise strategy along four end-to-end business processes based on well defined technology standards.

Discover the integration DNA of the Intelligent Suite from SAP

Key takeaways

- Technology guidelines are consistently applied to the SAP applications belonging to the Intelligent Suite in order to deliver truly integrated business processes
- Technology guidelines in focus for 2019 and 2020*:



*Roadmap topics (Subject to change)

Q & A



Continue your SAP TechEd 2019 Learning Experience

Join the digital SAP TechEd Learning Room 2019 in [SAP Learning Hub](#)

- Access SAP TechEd **Learning Journeys**
- Discover **related** learning content
- Watch **webinars** of SAP TechEd lectures
- Learn about SAP's latest innovations with **openSAP**
- Collaborate with **SAP experts**
- **Self-test** your knowledge
- Earn a SAP TechEd **knowledge badge**

SAP Learning Hub

open**SAP**



Engage with the **SAP TechEd Community**

Access replays and continue your SAP TechEd discussion after the event within the **SAP Community**



Access replays

- Keynotes
- Live interviews
- Select lecture sessions

<http://sapteched.com/online>



Continue the conversation

- Read and reply to blog posts
- Ask questions
- Join discussions

sap.com/community



Check out the latest blogs

- See all SAP TechEd blog posts
- Learn from peers and experts

[SAP TechEd blog posts](#)

More information



Related SAP TechEd Learning Journeys

- INT1 – Connect with an Intelligent Suite in an hybrid landscape
 - INT2 – Master integration technologies uniting your intelligent suite
 - ENT1 – Deliver the Intelligent Enterprise along key end-to-end processes
-

Related SAP TechEd sessions

- <Strategy Talk Integration> – Unlocking the Power of One SAP
 - iENT200 - Experience the Next-Generation Processes of the Intelligent Suite from SAP
 - INT101 - Integrate It All with SAP Cloud Platform Integration Suite
 - INT102 - How to Apply the Integration Solution Advisory Methodology
 - INT300 - Simplify Master Data Integration with Services from SAP Cloud Platform
 - INT384 - Take an Automated Approach to Configure Integration Scenarios
 - CAA109 - Providing a Central Inbox for all SAP Workflows
 - CAA213 - SAP Cloud ALM – News and Road Map from an Operations Perspective
 - SEC200 - How to Run Identity and Access Management for the Intelligent Enterprise
 - UX208 - Explore SAP Fiori 3 for End-to-End Processes in the Intelligent Enterprise
 - AIN829 - Integration of SAP Analytics Cloud in Other Applications Road Map
-

Public SAP Web sites

- SAP Community: <https://www.sap.com/community/topics/cloud-integration.html>
- SAP products: <https://www.sap.com/products/intelligent-enterprise.html>
- SAP road map „The Journey to the Intelligent Enterprise - End-to-End Process Road Maps“: <https://www.sap.com/documents/2019/08/7cdc3110-607d-0010-87a3-c30de2ffd8ff.html>



Thanks for attending **this session.**



Feedback

Please complete your session evaluation
for **INT103**.

Contact for further topic inquiries

Katrin von Ahsen
Central Engineering - Integration
katrin.von.ahsen@sap.com

Follow us



www.sap.com/contactsap

© 2019 SAP SE or an SAP affiliate company. All rights reserved.

No part of this publication may be reproduced or transmitted in any form or for any purpose without the express permission of SAP SE or an SAP affiliate company.

The information contained herein may be changed without prior notice. Some software products marketed by SAP SE and its distributors contain proprietary software components of other software vendors. National product specifications may vary.

These materials are provided by SAP SE or an SAP affiliate company for informational purposes only, without representation or warranty of any kind, and SAP or its affiliated companies shall not be liable for errors or omissions with respect to the materials. The only warranties for SAP or SAP affiliate company products and services are those that are set forth in the express warranty statements accompanying such products and services, if any. Nothing herein should be construed as constituting an additional warranty.

In particular, SAP SE or its affiliated companies have no obligation to pursue any course of business outlined in this document or any related presentation, or to develop or release any functionality mentioned therein. This document, or any related presentation, and SAP SE's or its affiliated companies' strategy and possible future developments, products, and/or platforms, directions, and functionality are all subject to change and may be changed by SAP SE or its affiliated companies at any time for any reason without notice. The information in this document is not a commitment, promise, or legal obligation to deliver any material, code, or functionality. All forward-looking statements are subject to various risks and uncertainties that could cause actual results to differ materially from expectations. Readers are cautioned not to place undue reliance on these forward-looking statements, and they should not be relied upon in making purchasing decisions.

SAP and other SAP products and services mentioned herein as well as their respective logos are trademarks or registered trademarks of SAP SE (or an SAP affiliate company) in Germany and other countries. All other product and service names mentioned are the trademarks of their respective companies.

See www.sap.com/copyright for additional trademark information and notices.