

A Vision for  
**Immersive**  
Analytics

Dr. Nicholas Nicoloudis  
SAP Cloud Platform

Professor Kim Marriott  
Monash University

# My Journey



## PERSASIVE 2004

Second International Conference on Pervasive Computing  
April 18-23, Linz / Vienna, Austria

NEW: Pervasive 2005

- Home
- Message from the GC Conference Committee
- Call for Papers
- How to present
- Forum
- Gallery
- Submission Categories
  - Doctoral Colloquium
  - Hot Spots
  - Tutorials

### Hot Spot Papers

Download the slide set of all hot spot and video paper presentations as a [pdf file](#).

#### H01: Microservices: A Lightweight Web Service Infrastructure for Mobile Devices

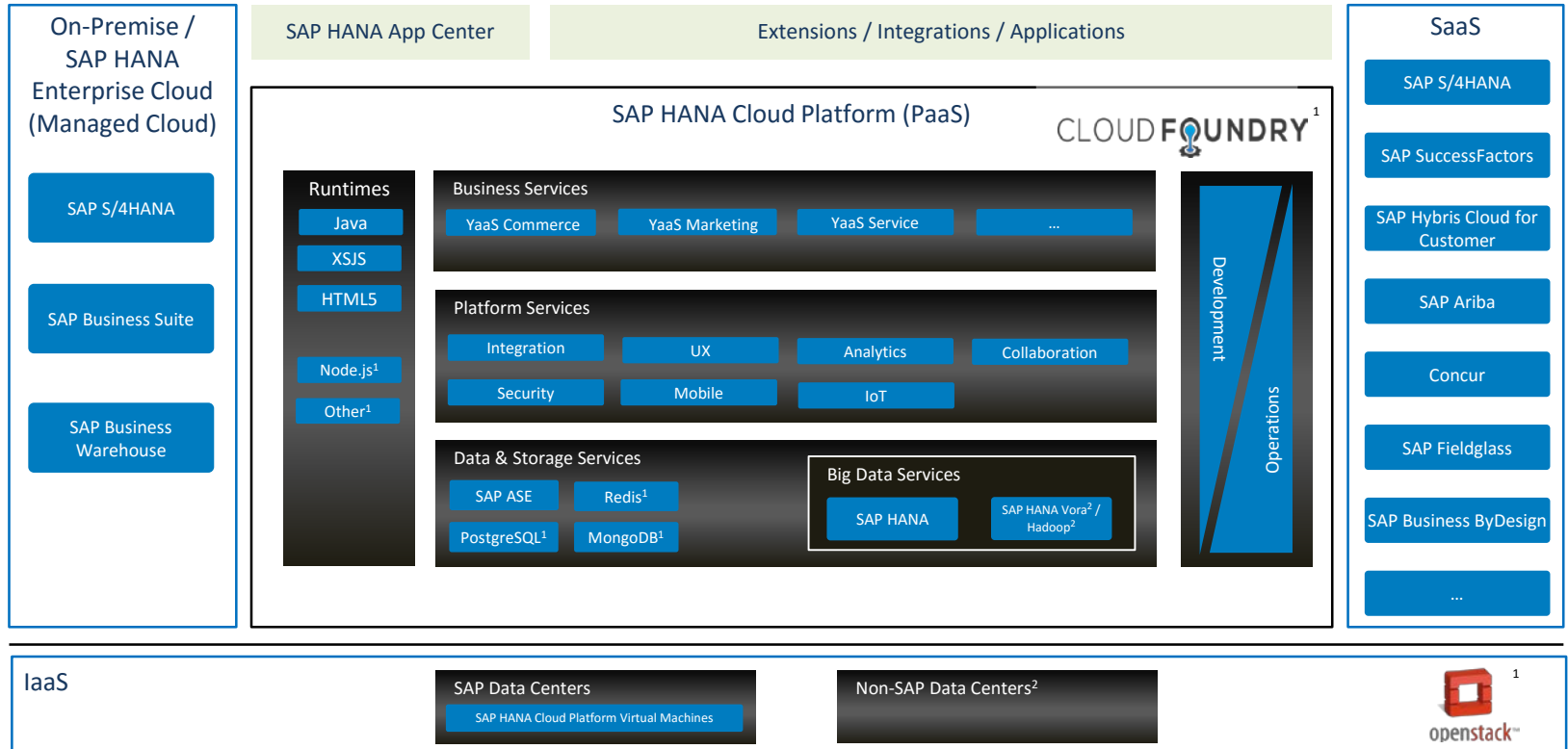
Nicholas Nicoloudis, I Made (Dennis) Pratistha

This paper presents an infrastructure that provides the capability of hosting web services from mobile devices. The architecture consists of two parts: a scaled-down web service specification and a compact web server that is capable of hosting the service. This capability offers the benefits of delivering portable software service and opens new possibilities in the types of applications that can be made available to mobile devices.

### Applications – Emergency/Disaster Management - Live Call Monitoring and GPS Analysis - Demo



# SAP HANA Cloud Platform

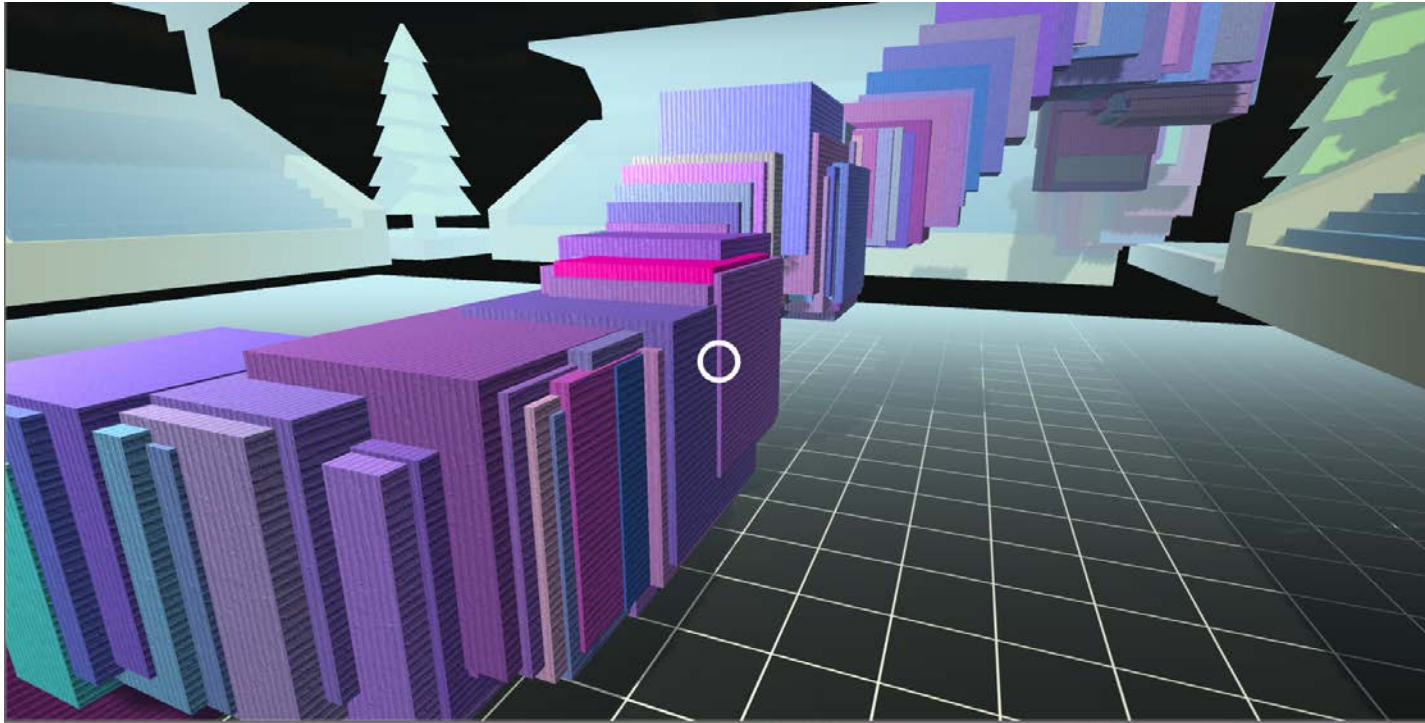


1) Beta 2) Planned innovations / future direction

This is the current state of planning and may be changed by SAP at any time.

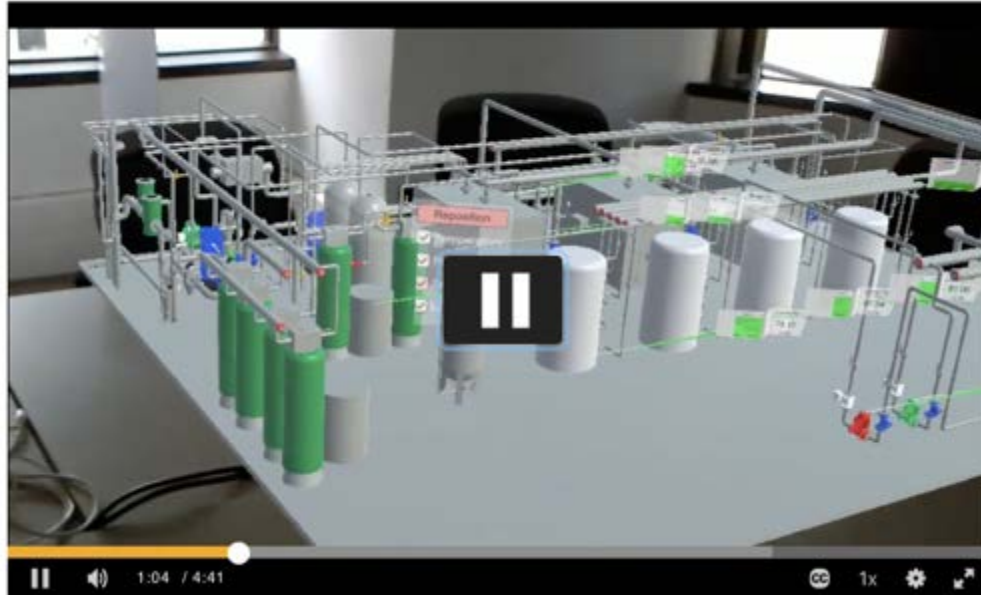
from Things

# Visualising IoT Data in a VR World, Data Immersion



from Things

## AR with Interactive HoloLens and VE



# Changing Presentation Technologies



- [Tiled displays] CAVE2
- [HMD VR] Oculus Rift, HTC Vive, Samsung Gear VR
- [HMD AR] Google Glass, HoloLens, Magic Leap

# Immersive Analytics



Immersive analytics investigates how new interface and display technologies can be best used used to support analytical reasoning and decision making.

The aim is to provide multi-sensory interfaces that allow users to immerse themselves in their data and to work together collaboratively.

New research direction at Monash, and SAP and the broader data visualization community

# Immersive Analytics@Monash

CAVE2 & Woodside Lab



SensiLab

