



Empowering RISE with SAP: How **SAP Cloud ALM** enables Clean Core and Business Transformation

Shruthi Jayaram
Senior Product Specialist
SAP ALM Go-to-Market, SAP Australia



Unleashed

AI+Data+Applications

Agenda

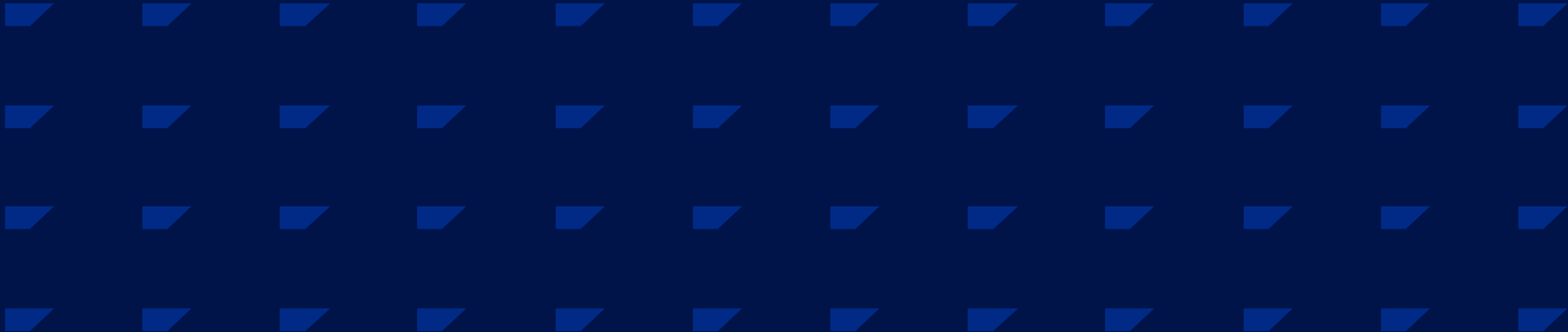
01 Introduction to SAP Cloud ALM

02 SAP Cloud ALM's role for RISE with SAP and Clean Core

03 Demo

04 Q&A

Introduction to SAP Cloud ALM



Transforming towards **agile**, **resilient** and **sustainable** enterprise

A close-up, blue-tinted image of a microchip and its surrounding circuitry, symbolizing technology and agility.

**Every organization
becomes an agile
enterprise**

Business agility

An aerial, high-angle view of a busy port or shipping yard filled with numerous colorful shipping containers, symbolizing global supply chain resilience.

**Every organization
benefits from
connected networks**

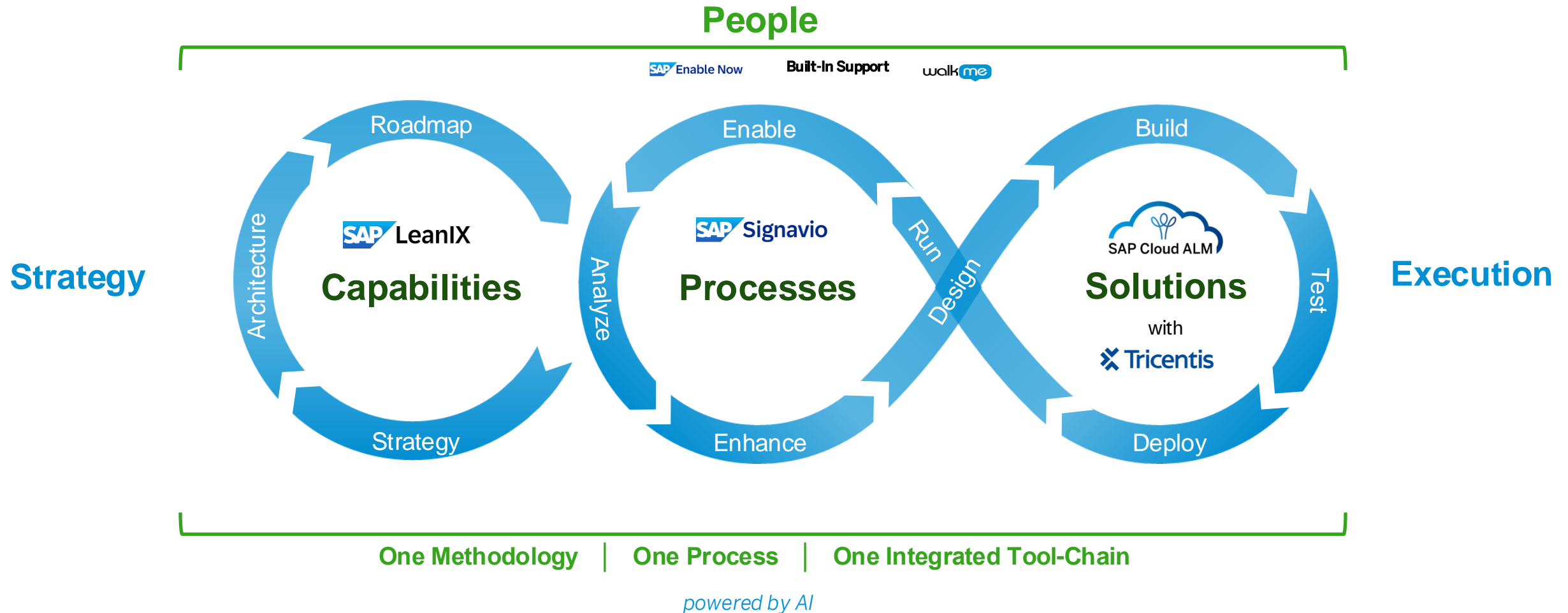
Supply chain resilience

A landscape view of a hillside covered in rows of solar panels, with mountains in the background under a soft sky, symbolizing sustainable energy and operations.

**Every organization
builds sustainable
operations**

Sustainability outcomes

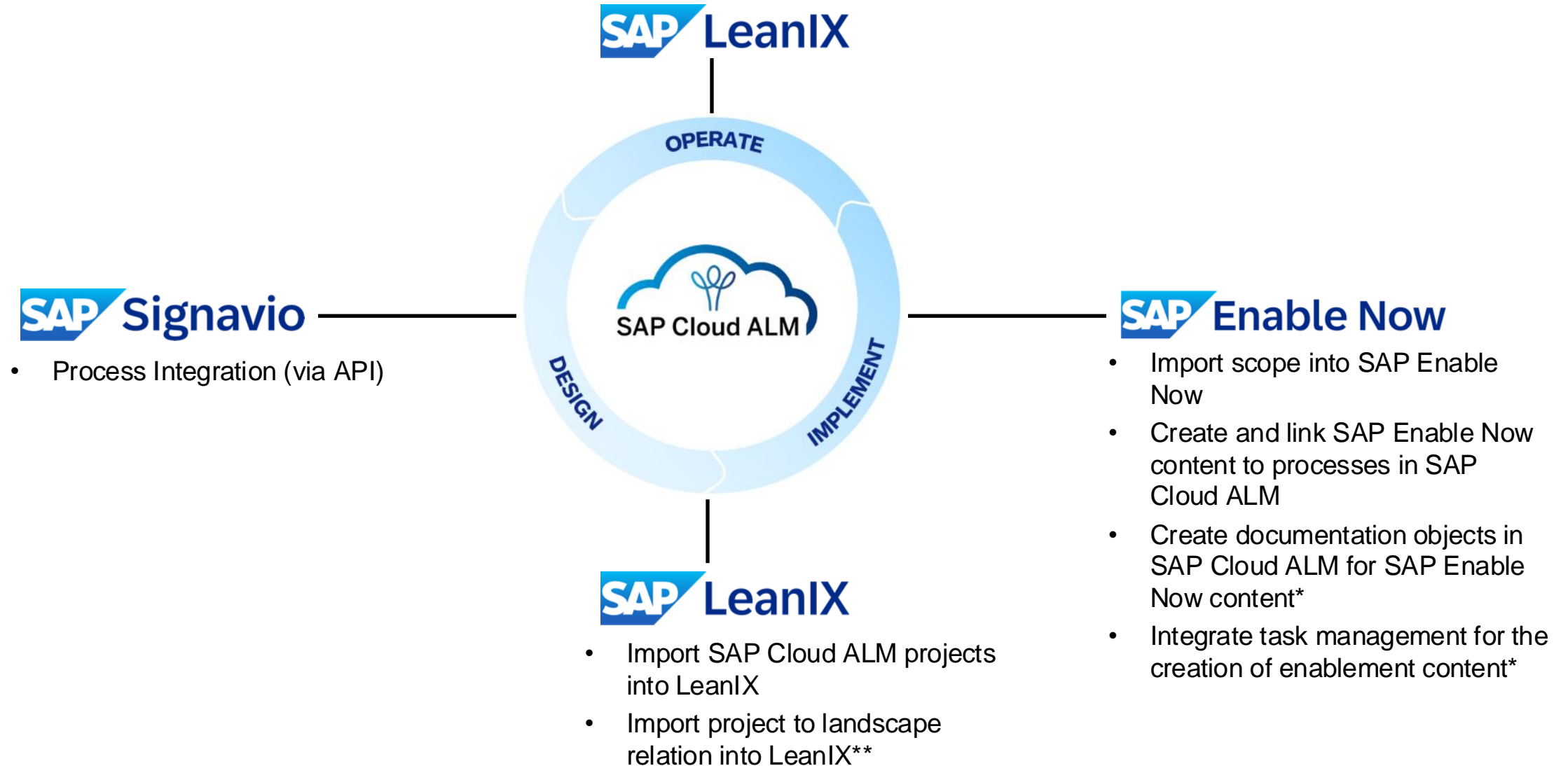
Our best-of-suite solutions for Business Transformation



Best-of-suite integration

- Landscape discovery
- Interface discovery*
- Operations troublemaker**

* available soon
** on vision



SAP Cloud ALM

SAP Cloud ALM provides businesses with a robust and scalable solution for managing their entire solution landscape in the cloud. It enables faster adoption of innovation and more efficient operations through streamlined processes, increased transparency and improved collaboration.

Benefits of SAP Cloud ALM

- ✓ **Reduce TCO of solution landscape**
- ✓ **Supports Cloud & Hybrid**
- ✓ **Instantaneously available**
- ✓ **Included in subscription**

Capabilities of SAP Cloud ALM:

Implementation

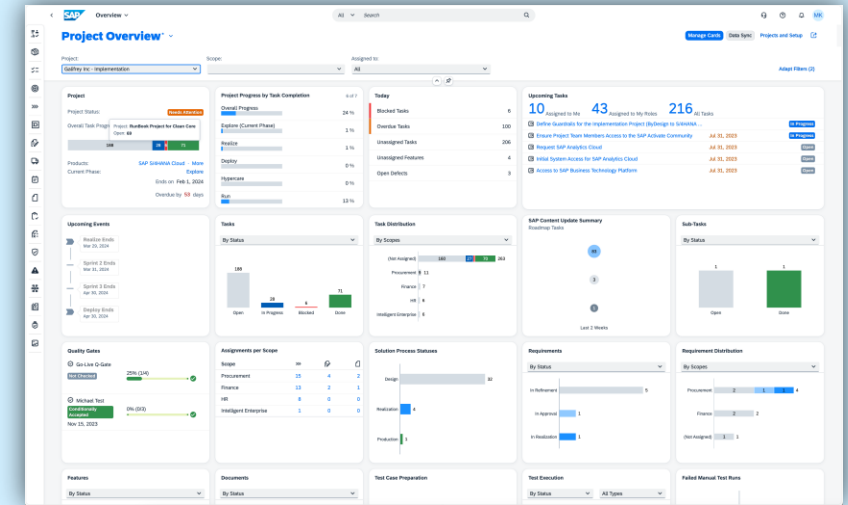
Holistic support for implementation and maintenance of all SAP solutions, covering all aspects from design, build, test and deploy with integrated analytics and traceability

Operations

Proactive problem detection for integrations, exceptions, jobs, performance and accelerated problem resolution with automated corrective actions integrated into customer service management platform

Service

Collaborative workspace for consumption of SAP services, management of service results and follow-up activities



Facts and figures

9200+

Customers around the world

Low TCO

Included in Subscription and Maintenance

Holistic

Supports implementation, Operations & Service

SaaS Native

Solution available across the globe

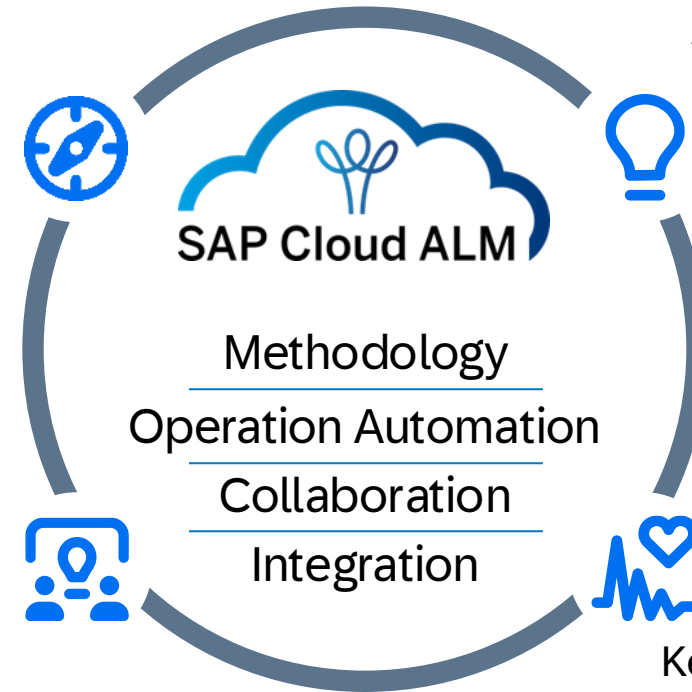


*Learn
more!*

SAP Cloud ALM supports your cloud journey

Transform to
Clean Core

Adopt the Latest
Innovations

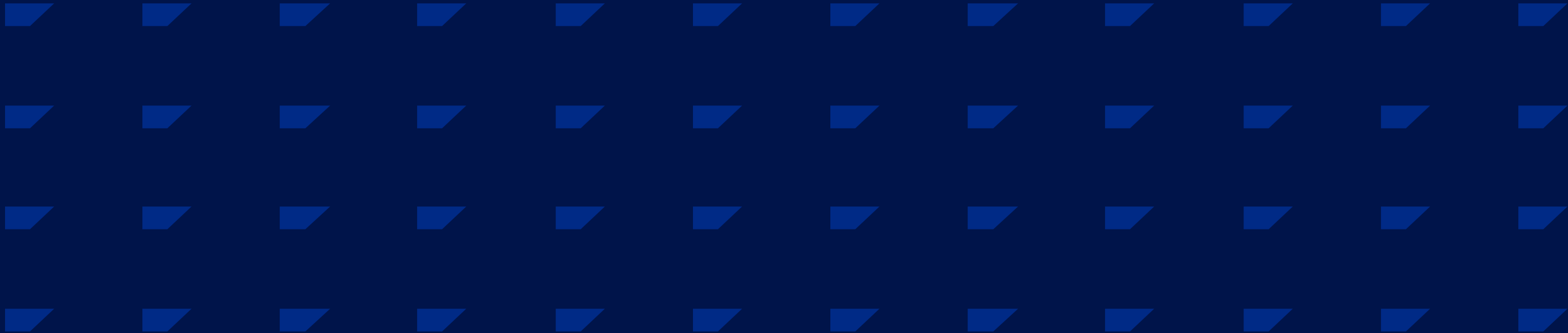


Optimize with
SAP Services

Keep Your Business
Running

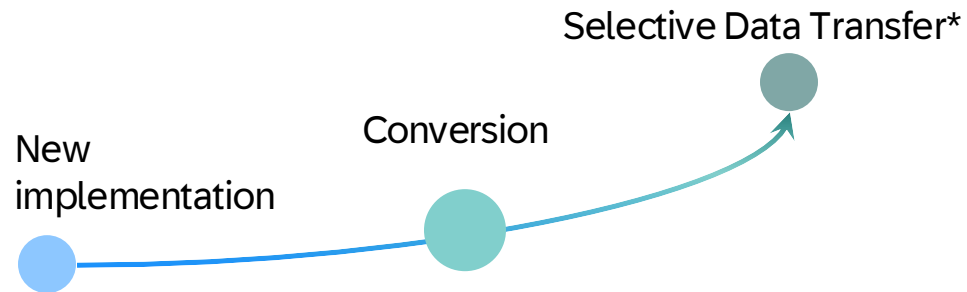


SAP Cloud ALM's Role for RISE with SAP and Clean Core



SAP Cloud ALM's Role for RISE with SAP and Clean Core

SAP Cloud ALM Guides You With RISE with SAP Methodology



SAP Cloud ALM Measures and Optimizes Clean Core*



SAP Cloud ALM orchestrates Clean Core

1 Processes

- Fit-to-standard: Best practices, custom processes requirements
- Business Process Monitoring
- Remediate simplification items

2 Extensibility

- ABAP + BTP development
- Agile Build, Testing
- Monitoring of extensions
- Remediate custom code

3 Data

- Data consistency and data volume monitoring
- Financial data quality

4 Integration

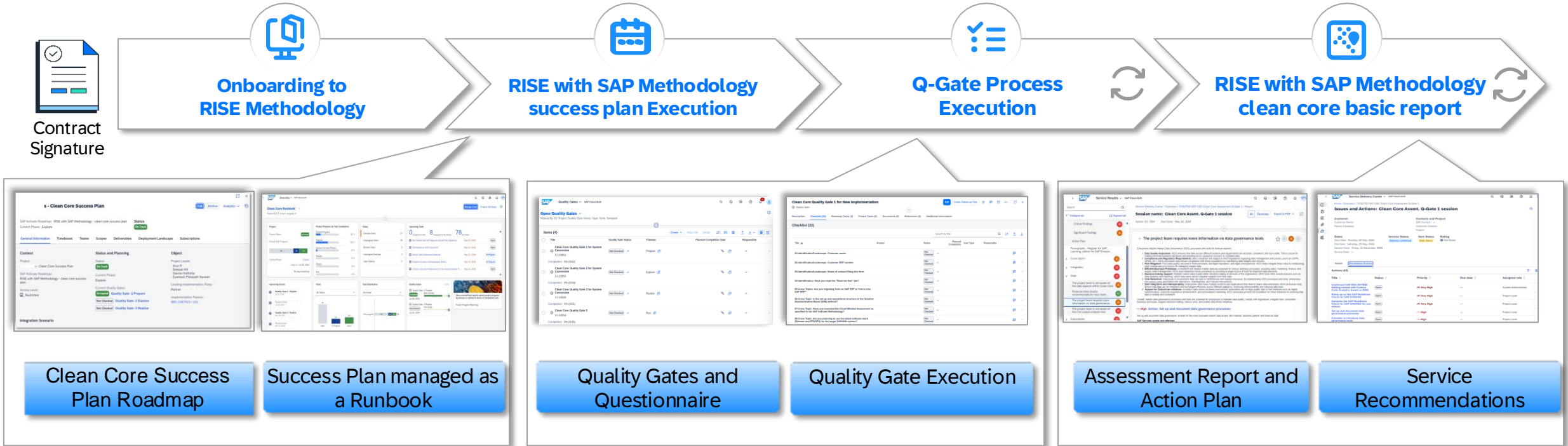
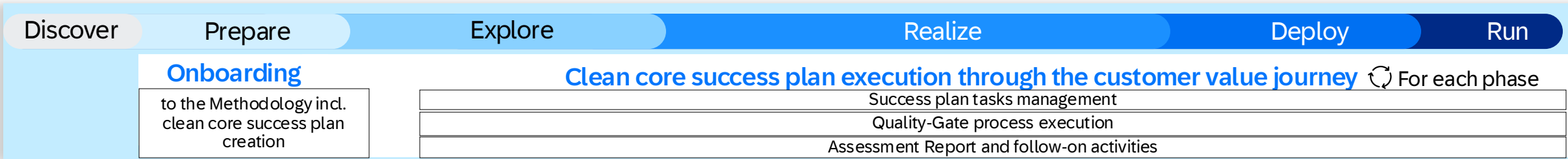
- Interface Documentation
- CPI deployments
- Interface and exception monitoring

5 Operation

- Full stack monitoring
- Business service management
- Regression testing
- Releases and Upgrades

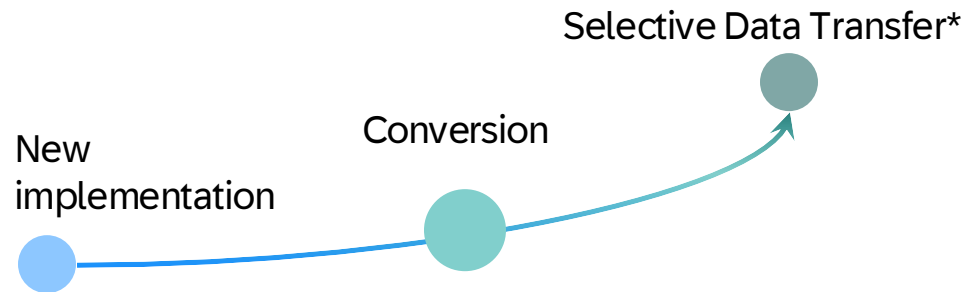
*) This is the current state of planning and may be changed by SAP at any time.

SAP Cloud ALM guides and actively supports the RISE with SAP Methodology



SAP Cloud ALM's Role for RISE with SAP and Clean Core

SAP Cloud ALM Guides You With Rise with SAP Methodology



SAP Cloud ALM Measures and Optimizes Clean Core*



SAP Cloud ALM orchestrates Clean Core

1 Processes

- Fit-to-standard: Best practices, custom processes requirements
- Business Process Monitoring
- Remediate simplification items

2 Extensibility

- ABAP + BTP development
- Agile Build, Testing
- Monitoring of extensions
- Remediate custom code

3 Data

- Data consistency and data volume monitoring
- Financial data quality

4 Integration

- Interface Documentation
- CPI deployments
- Interface and exception monitoring

5 Operation

- Full stack monitoring
- Business service management
- Regression testing
- Releases and Upgrades

SAP Cloud ALM supports Clean Core



SAP Cloud ALM provides the environment to manage your clean core projects along SAP Activate and the 5 dimensions together with analytics and Traceability dashboards to track adherence to clean core criteria

1

Processes

- SAP Best Practice Content
- Fit-to-standard Workshops
- Requirements management
- Custom processes design
- Business Process Monitoring
- Job and Automation Monitoring
- SAP Readiness Check

2

Extensibility

- Manage development (ABAP & BTP)
- Testing
- Agile Build
- Drive business continuity of extensions
- SAP Readiness Check

3

Data

- SAP Readiness Check
- Integration and exception monitoring

4

Integration

- Integration Documentation
- Manage integration artefacts in CPI
- Integration and exception monitoring

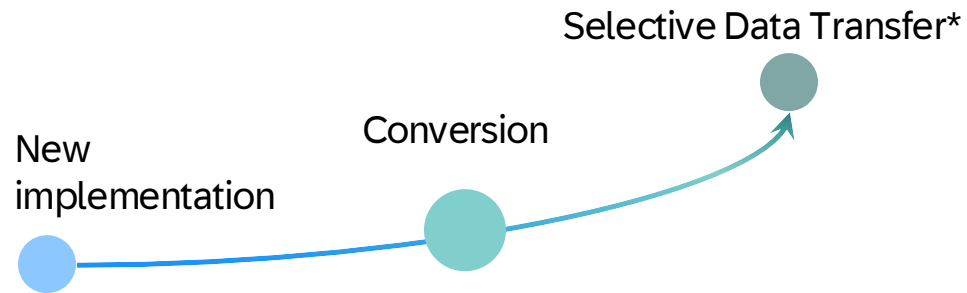
5

Operations

- Holistic and secure application and business process operations
- Integration in IT-SM processes
- Automated regression testing
- Release Management
- SAP Readiness Check

SAP Cloud ALM's Role for RISE with SAP and Clean Core

SAP Cloud ALM Guides You With Rise with SAP Methodology



SAP Cloud ALM Measures and Optimizes Clean Core*



SAP Cloud ALM orchestrates Clean Core

1 Processes

- Fit-to-standard: Best practices, custom processes requirements
- Business Process Monitoring
- Remediate simplification items

2 Extensibility

- ABAP + BTP development
- Agile Build, Testing
- Monitoring of extensions
- Remediate custom code

3 Data

- Data consistency and data volume monitoring
- Financial data quality

4 Integration

- Interface Documentation
- CPI deployments
- Interface and exception monitoring

5 Operation

- Full stack monitoring
- Business service management
- Regression testing
- Releases and Upgrades

Welcome to SAP Cloud ALM

Get to know SAP Cloud ALM



Transition from SAP Solution Manager.
SAP Activate Roadmap for SAP Cloud ALM



SAP Road Map Explorer



Additional Information

SAP Support Portal



SAP Help Portal



Expert Portal for Operations



Expert Portal for Implementation



Expert Portal for Service



SAP Road Map Explorer



Learning Portal



What's New in SAP Cloud ALM SAP Help Portal

Interaction and Insights

SAP Continuous Influence for Implementation



SAP Continuous Influence for Operations



SAP Continuous Influence for Service



Events and Webcasts



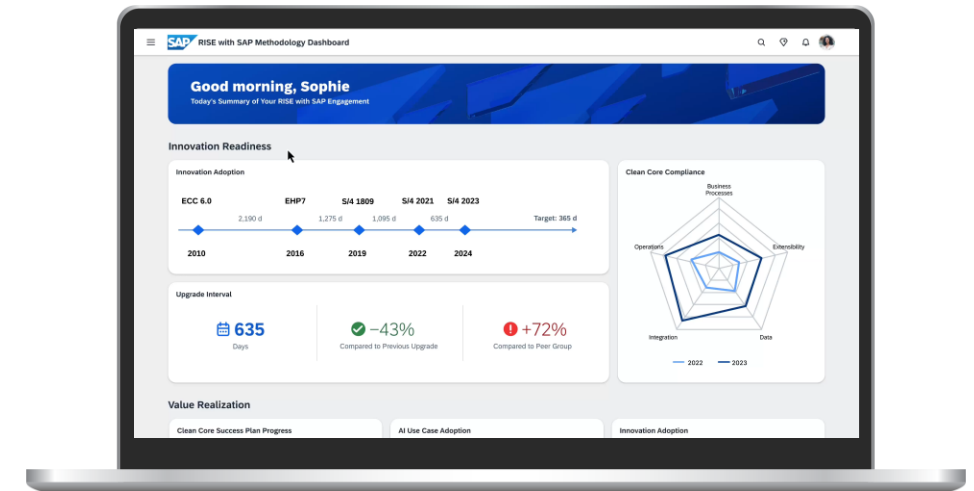
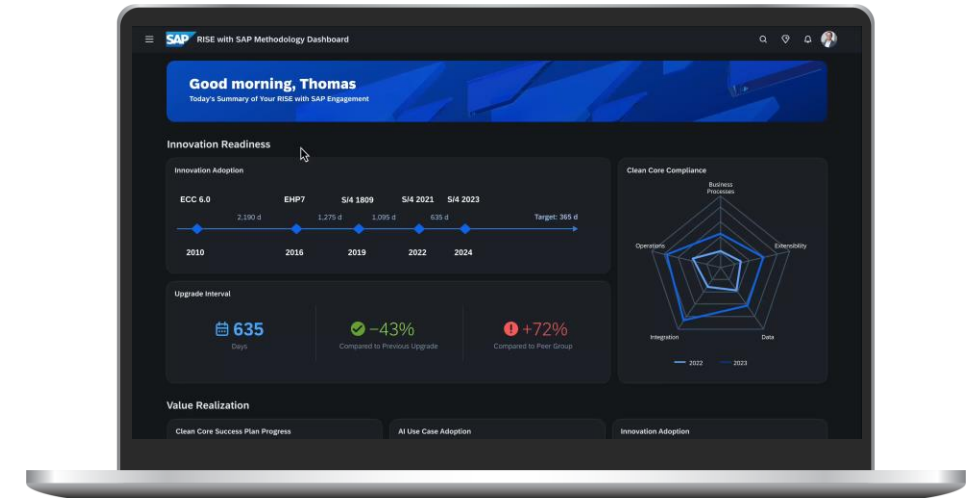
SAP Community



Outlook: RISE with SAP Methodology Dashboard

Key objectives

- showing customers the **value of RISE for SAP** by outlining unused potential in their current system
- having a **clean core strategy is essential** for leveraging latest features and technologies
- SAP supports **holistically** by getting to a clean core:
 - not only focusing on custom code but the **impact** that this custom code has **on business processes**
 - supporting customers in **making decisions** which steps to be done in which sequence (e.g. starting with low-hanging fruits like removal of unused custom code)
 - also focusing on **highly-individualized business processes** which are causing problems
 - bridging the gap from **analysis to execution** by task creation and distribution among the project team

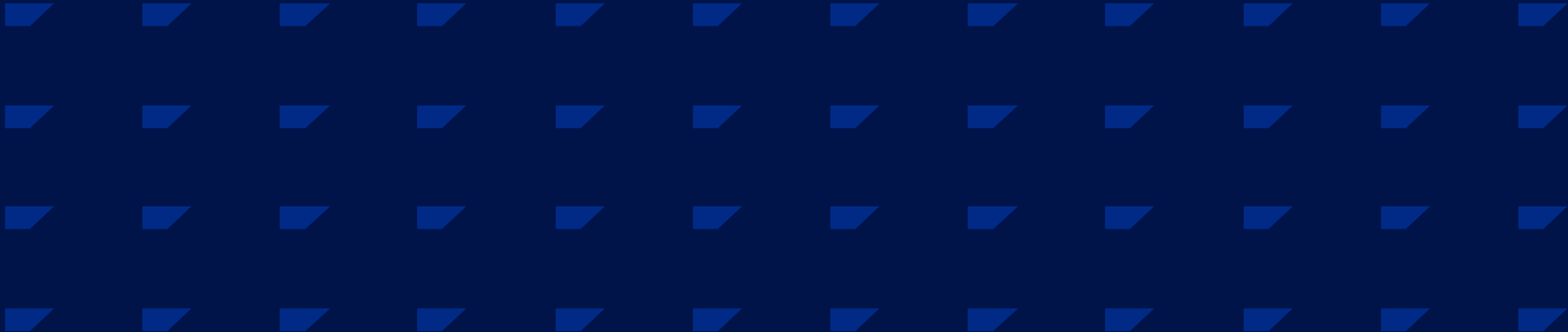


Key Takeaways

- SAP Cloud ALM is a robust solution for [managing the complete application lifecycle](#), supporting business transformation initiatives through structured methodologies.
- [Included in your Entitlement](#): Customers can utilize SAP Cloud ALM at no additional charge as it is part of their existing entitlements.
- It is [integral to RISE with SAP and Clean Core initiatives](#), offering methodological support, dashboards, and quality checkpoints.
- [Comprehensive support](#) for all dimensions of Clean Core ensures a well-rounded approach to maintaining a clean and efficient SAP environment.
- [Future enhancements](#) promise continuous improvement, aligning with evolving business needs and technological advancements.



Questions?



Thank you.

Contact information:

Shruthi Jayaram

Shruthi.Jayaram@sap.com

Shruthi Jayaram

Senior Product Specialist

ALM Go-to-Market

