

A blurred, long-exposure photograph of a large crowd of people moving through a modern glass-walled building, likely a transit hub or a large office lobby. The motion blur gives a sense of activity and scale. The image is used as a background for the top half of the slide.

Start with Design, Innovate at Scale

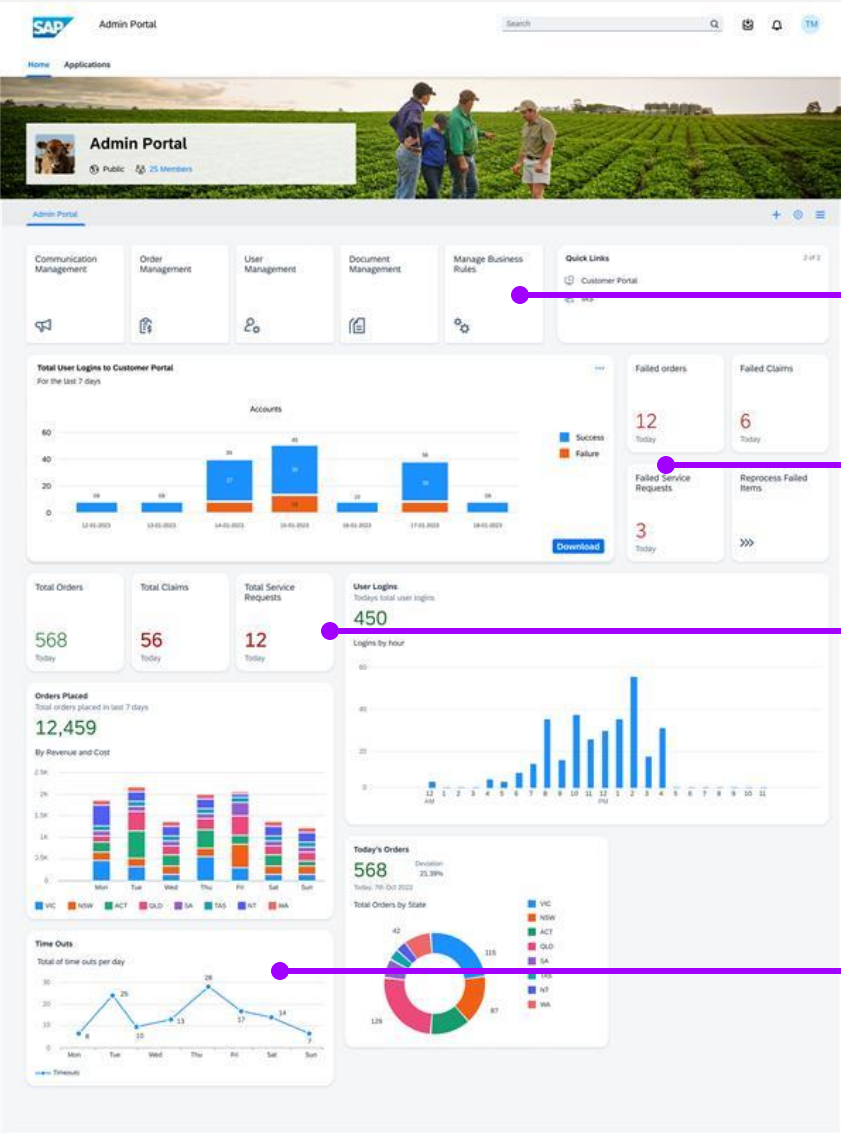
Business Transformation with a Modern Digital Core

SAP Business Unleashed Innovation Day

March 2025



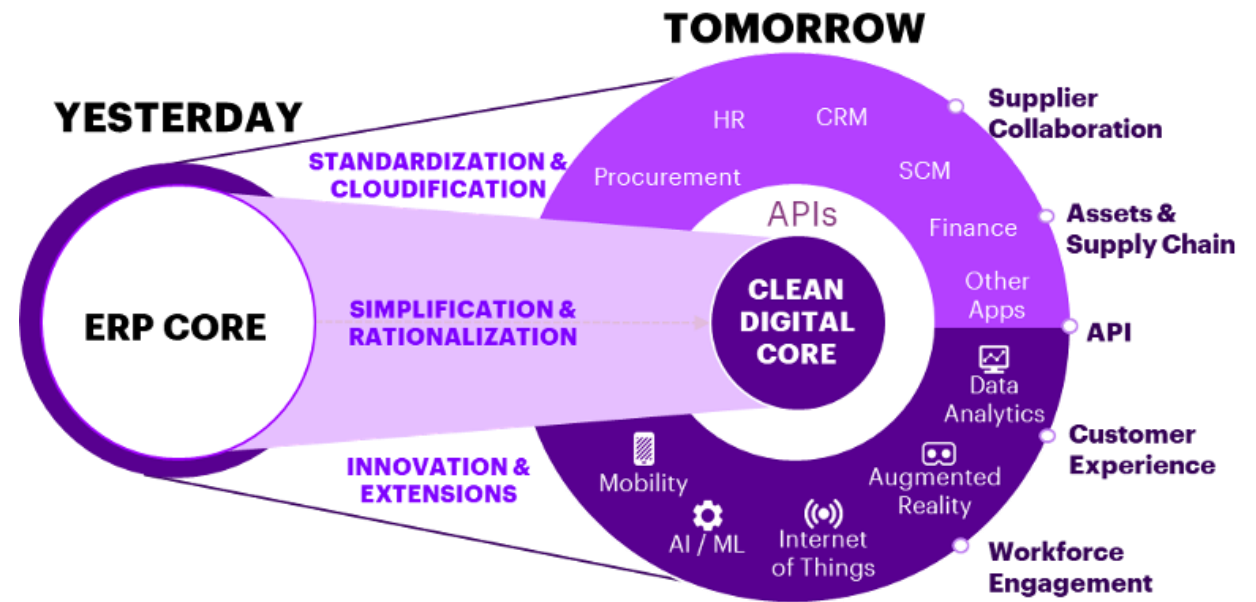
“Design is not just what it looks like and feels like.
Design is how it works.”
– Steve Jobs



Personalised, roles based unified secure entry point

Innovate at Scale, Clean Core Design Principles

- Migrate and reimagine key business functions that have been developed as customisations onto SAP BTP
- Create a "Composable architecture" that seeks to leverage SAP BTP cloud capabilities such as portal, mobile and automation services to support ongoing business improvement
- Start now, derisk and deliver value ahead of the migration to S/4HANA
- Leverage SAP BTP cloud reporting and analytics capabilities for deeper insights and improved self-service.
- Seek AI and automation opportunities that can provide immediate business benefits and support migration to S/4HANA



Enabling personalised user experience for users on any device

Creating fluid experiences that resonate across the end user



Peter, 51

Requisitioner

Identify the need for goods or services

- Working closely with the project owner to gather financial data and create supporting documentation



Sarah, 38

Procurement

Approve orders and purchases

- Review updates on purchase requisition status
- Easy access to procurement documents on the go
- Approve PR on the go



Peter, 26

Technician

Complete job on site

- Complete maintenance request
- Create maintenance notification on the go
- Complete timesheet accurately



John, 40

Scheduler

Schedule work and resources

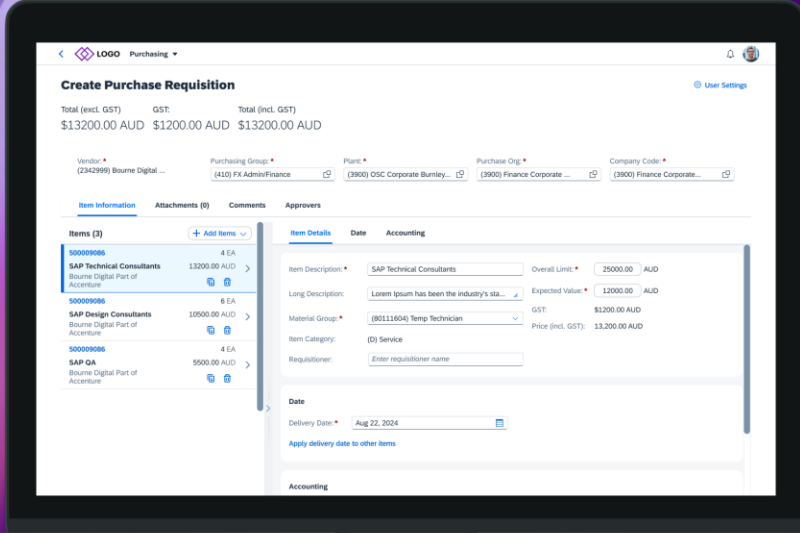
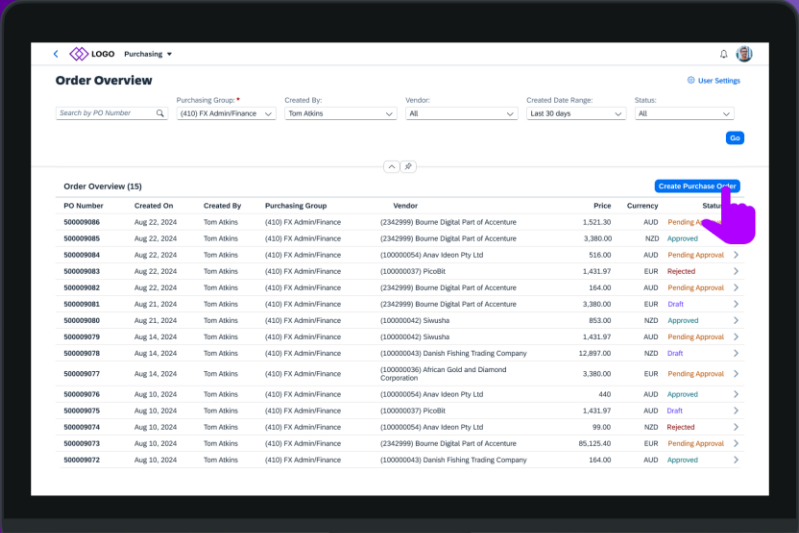
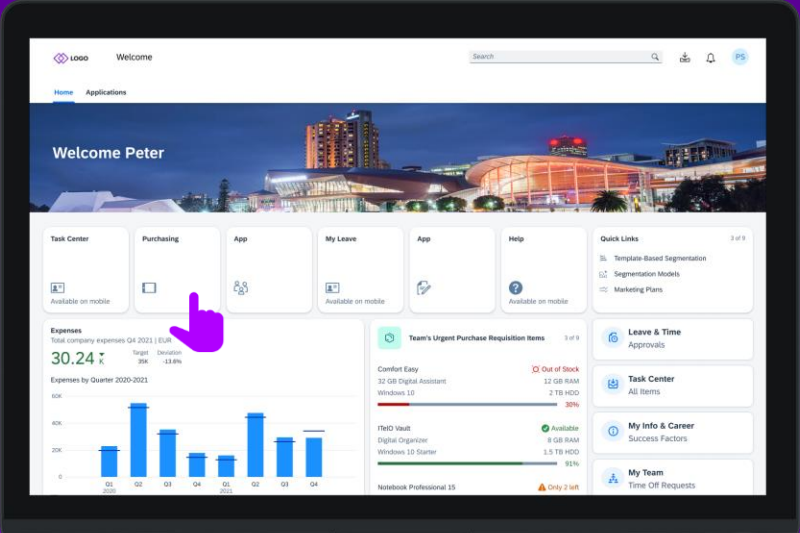
- Maintain and prioritise order request
- Schedule maintenance request
- Review and approve completed work

Scenario 1

Scenario 2

Purchasing - Peter

Meet **Peter** he’s a requisitioner. Implementing SAP Work Zone doesn’t interrupt Peter’s BAU activities. With SAP Work Zone, he has one central place to access all the applications he needs, saving him time searching for information.



Peter has one central place to access all the applications

Peter access his usual SAP applications including a new Fiori Application e.g. Purchasing

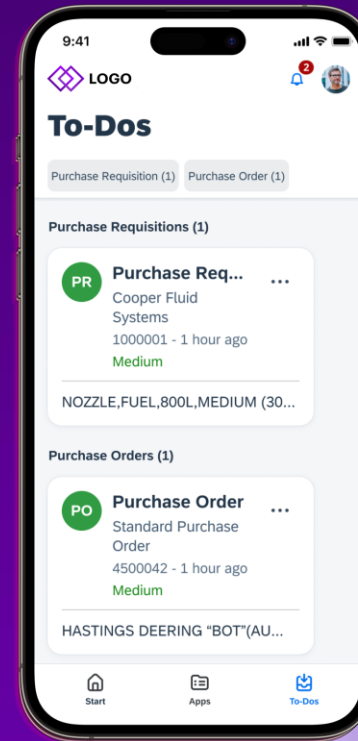
Procurement

- Sarah

Meet **Sarah** from the procurement team. She needs to monitor purchase requisitions and orders as they come in. With SAP Mobile Start she can access and do PR approvals on the go.

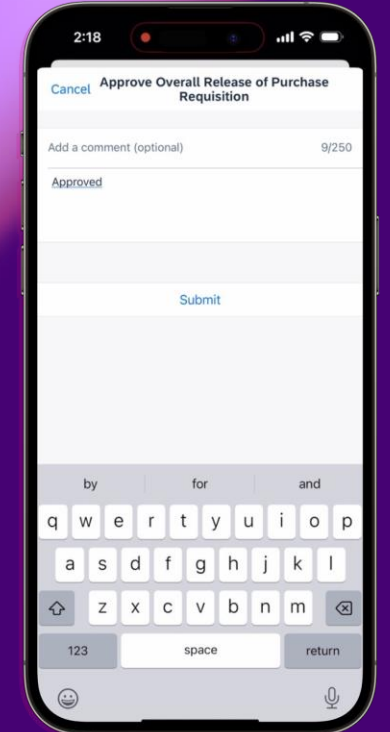
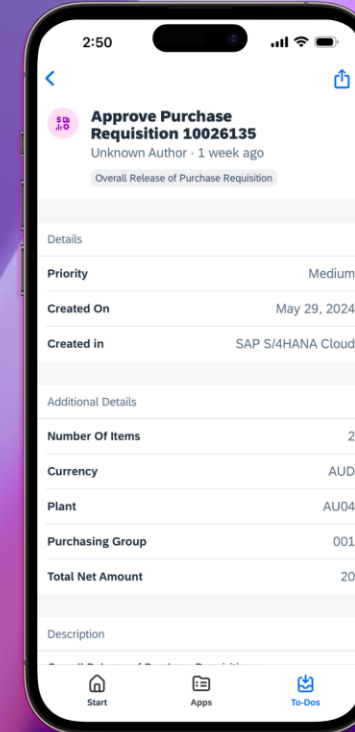
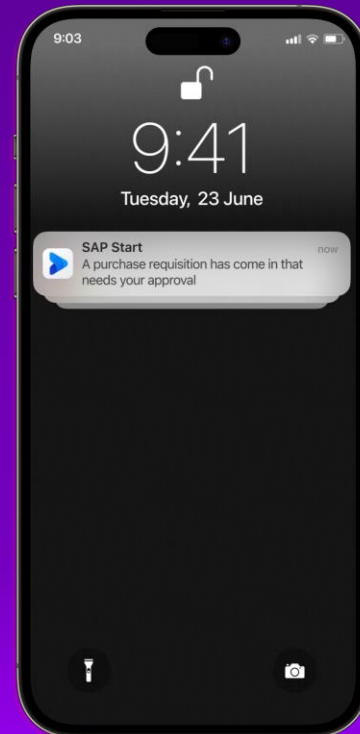
Manage to-dos

1. **On-the-go access to procurement tasks:** Sarah gets mobile access to manage purchase requisitions and orders while she is away from her desk, ensuring that procurement activities continue smoothly without delays.



Stay informed with real-time notification

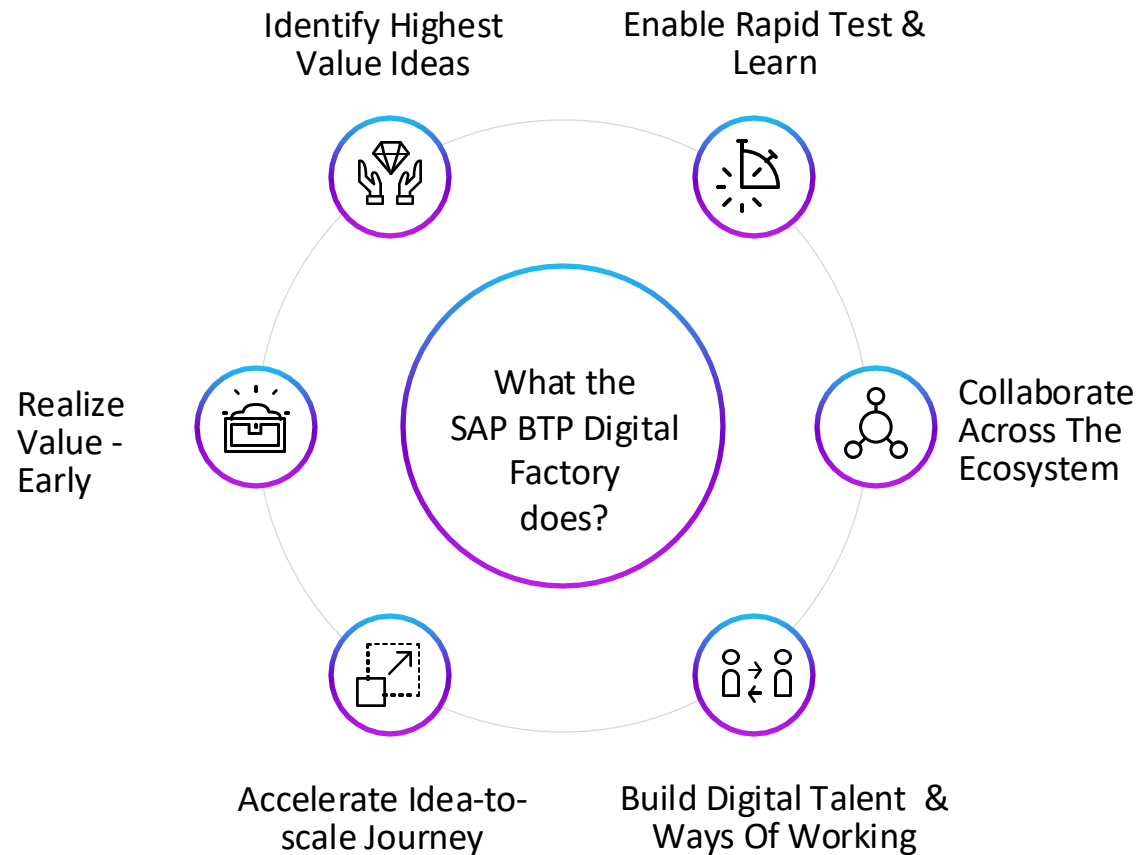
1. **Notifications:** Sarah receives real-time notifications and alerts directly to her mobile device.
2. **Home screen widgets:** Sarah can add widgets to her home screen for quick access to frequently used applications or tasks.



Productivity with mobile approvals

1. **Approval workflows:** Sarah can review and approve tasks like purchase requisitions and orders and leave comments.
2. **Important information:** Sarah can access high level details of information including attachments to inform her decision making.

Accenture's SAP BTP Digital Factory helps clients design and scale industry solutions and digital (and AI) capabilities to drive business value.



Thank You

Selim Ahmed
Managing Director
Bourne Digital | Part of Accenture

