



SAP Business Unleashed Innovation Day

When you connect everything,
you can achieve anything.

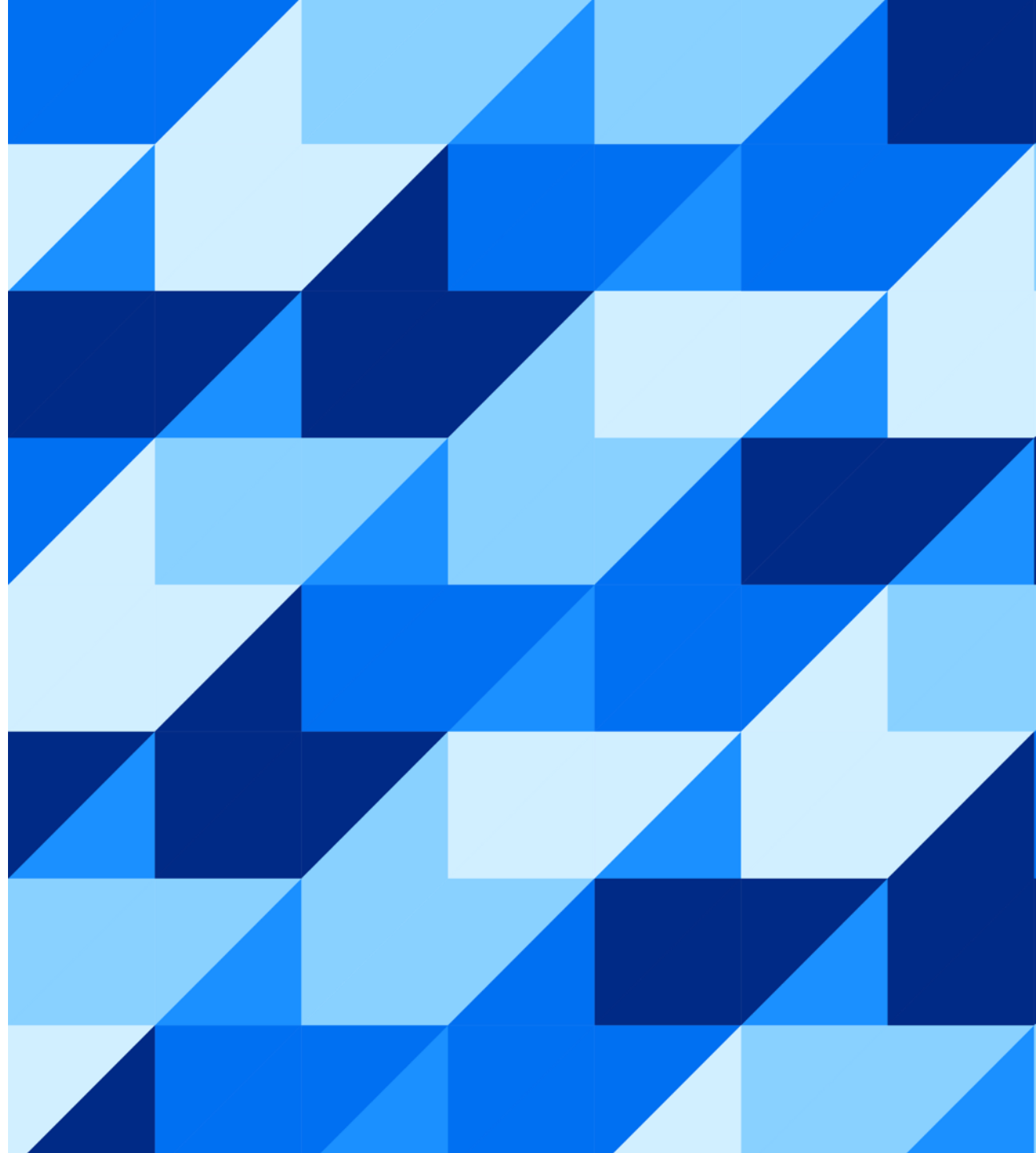




SAP Business Transformation Management

**From Mess to Success:
SAP LeanIX for better architecture
governance**

PUBLIC



Safe harbor disclaimer

The following is intended to outline our general product direction. It is intended for information purposes only and will not be incorporated into any contract. It is not a commitment to deliver any material, code, or functionality, and should not be relied upon in making purchasing decisions. The development, release, and timing of any features or functionality described for SAP products remain at the sole discretion of SAP.

Today's IT complexity is a barrier to transformation

The biggest hurdles to successful business transformations often lie hidden beneath the surface

59%

of organizations **lack clear insights into their IT ecosystems**, leading to misaligned priorities and inefficient resource allocation.

30%

Only 30% of organizations find **IT-business collaboration adequate**, leading to obstacles in decision-making and hindering transformation initiatives.

56%

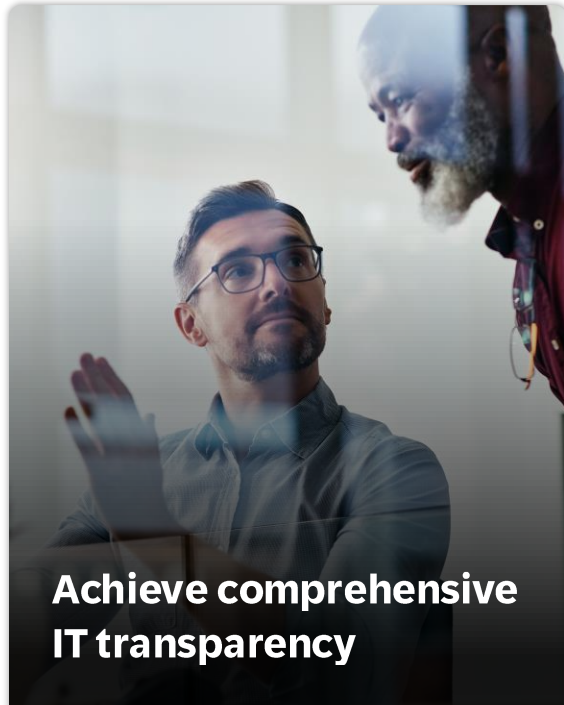
of respondents see **technical debt** as a **key factor in wasted IT budgets**, as legacy systems and outdated technology drain resources and slow innovation.

47%

of decision-makers see **rushed decisions as a major challenge**, leading to poor IT investments and missed long-term efficiency opportunities.



Proactively manage IT complexity as the basis for transformation



Achieve comprehensive IT transparency

Establish full visibility into your IT landscape for informed decisions and business alignment.



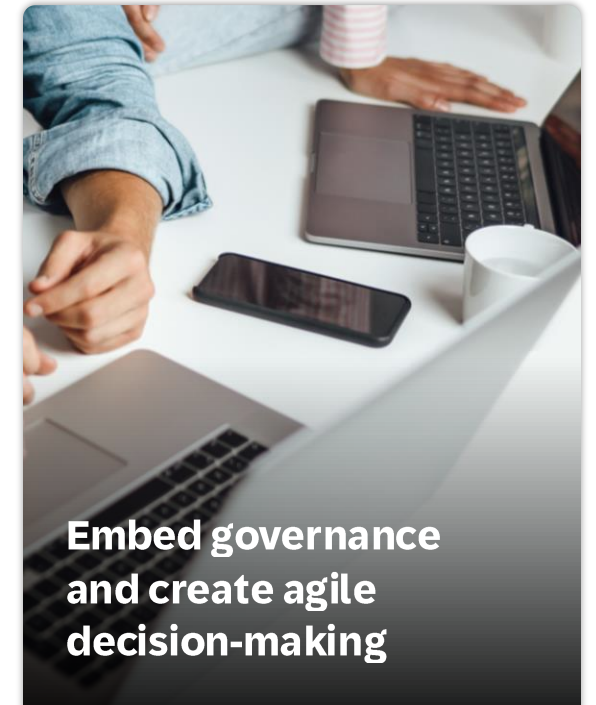
Streamline IT landscapes for efficiency

Consolidate application portfolios and reduce technical debt to free resources for innovation and strategic initiatives.



Foster seamless collaboration between business & IT

Break down silos to align priorities and ensure IT investments directly support critical business capabilities and objectives.



Embed governance and create agile decision-making

Use standardized frameworks and automated data collection to boost agility, manage complexity, and gain a competitive edge.

Navigate your transformation with SAP LeanIX

Missing visibility



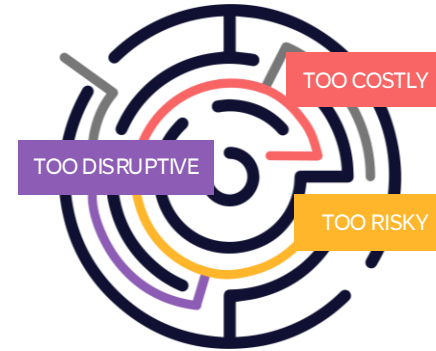
Transformations are complex with many risks and obstacles along the way. Navigation is impossible if you lack visibility.

1. Knowing your As-Is



SAP LeanIX gives you visibility into your As-Is landscape, enabling you to identify where you are starting from before you determine your next steps.

2. Scenario modelling



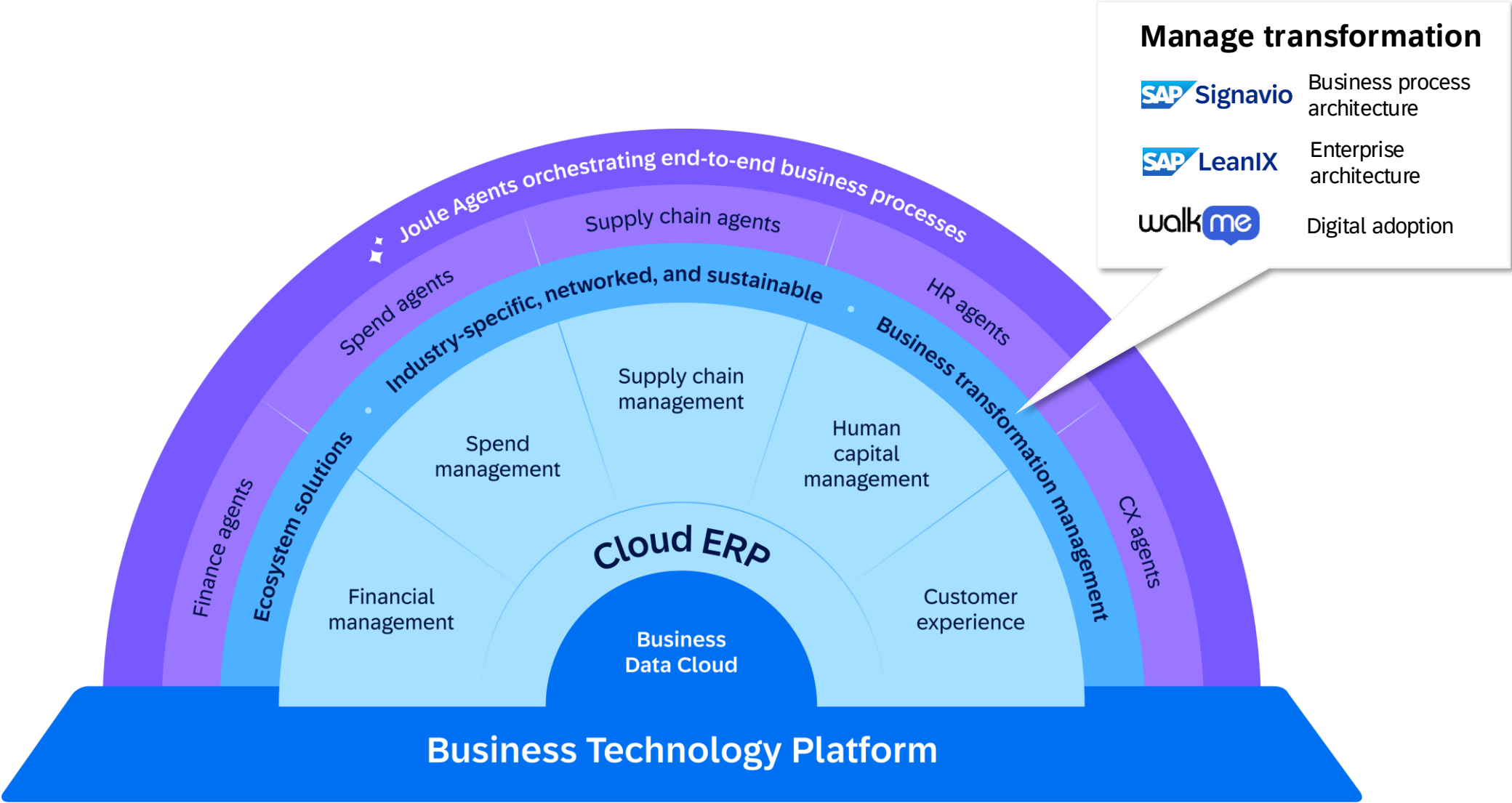
It is essential to explore which route is most beneficial for your business. SAP LeanIX empowers you plan different routes and model the impact of each choice.

3. Transformation planning and execution tracking



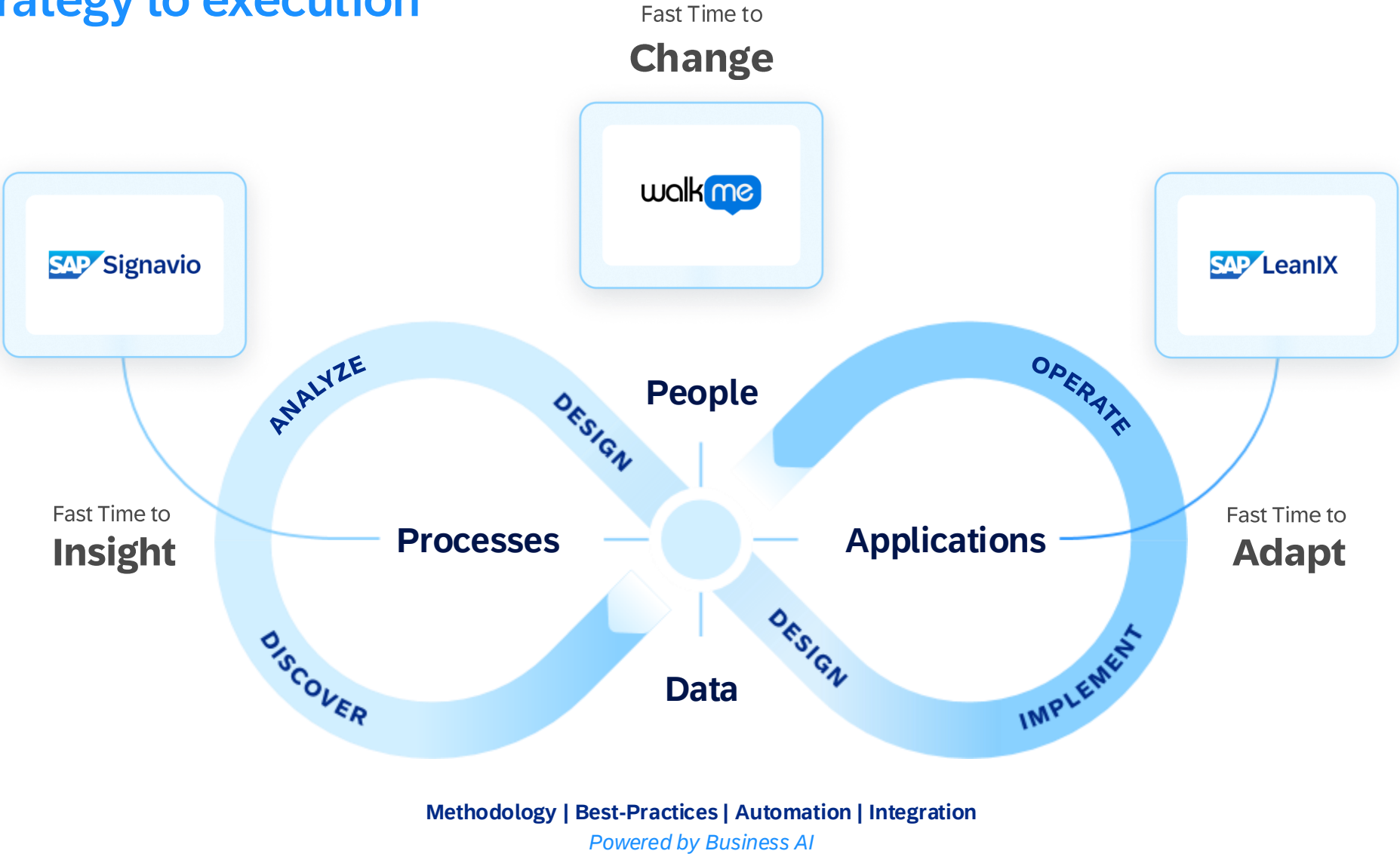
Finally, you need to navigate through the transformation. SAP LeanIX enables you to create a roadmap, track your progress and report on each step.

Business Transformation Management: Overview

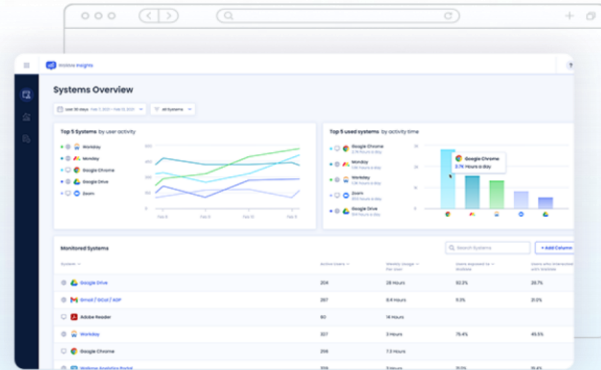


Business transformation

From strategy to execution



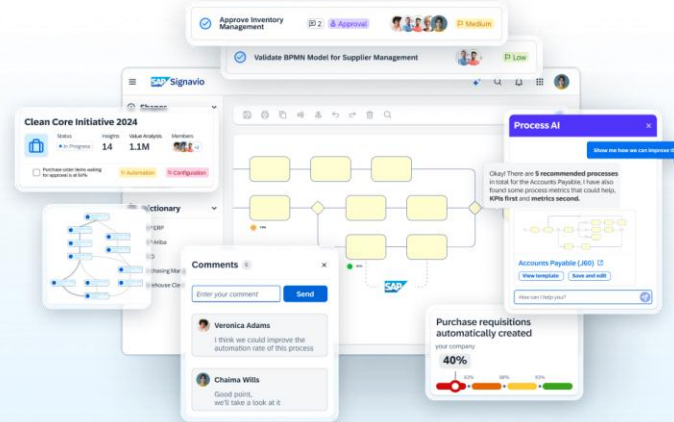
Powering Business Transformation with SAP LeanIX, SAP Signavio and WalkMe



Guide, govern and automate user interactions to drive tech adoption across applications and workflows

WalkMe

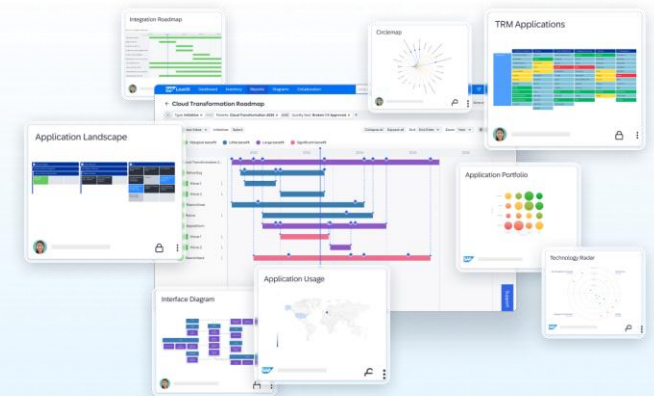
People



Analyze, optimize, and manage your processes fast and at a scale to become an agile and resilient enterprise.

SAP Signavio

Processes



Visualize and assess the as-is landscape and confidently navigate towards your to-be IT architecture.

SAP LeanIX

Applications

Reduce risk, accelerate timelines and continuously realize value

[Bosch Rexroth](#) automatically approve 89% of newly designed processes in SAP Signavio thanks to best practice content

"SAP Signavio and SAP LeanIX enable us to assess change impacts and associated risks, facilitating informed decisions and expeditious progress."
- Process Architect at [KWS Group](#)

[Virgin Australia](#) achieved a 40% improvement in the health score of business-critical applications through continuous IT modernization in SAP LeanIX

ROI

Best practice content leveraged for accelerated target state design

Risk lowered with detailed road map and project tracking

New processes and architecture adopted with governance in place

Improvement potential continuously identified

Transparency achieved and value identified

Rationalize applications to save costs and reduce complexity

TIME

[Marc O'Polo](#) achieved complete IT landscape transparency within month 3 of their 24-month transformation project with SAP LeanIX

[Danish Crown](#) identified an estimated \$2 million savings by automating aspects of their sales billing process with SAP Signavio

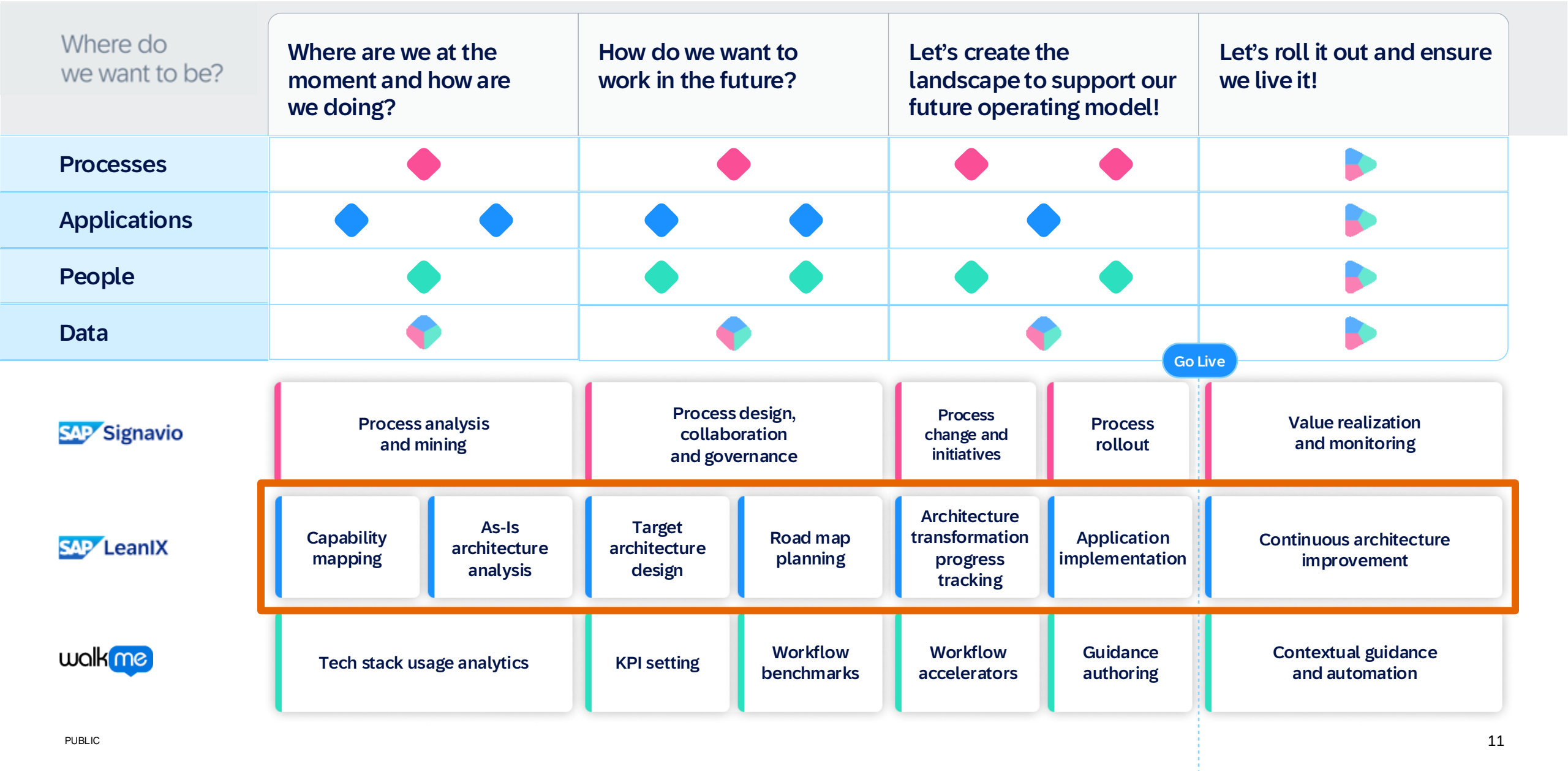
[First Abu Dhabi Bank](#) identified a 25% reduction opportunity across the application landscape by leveraging SAP LeanIX

[NSW Department of Education](#) identified over 150 applications fit for removal by analyzing their landscape with SAP LeanIX

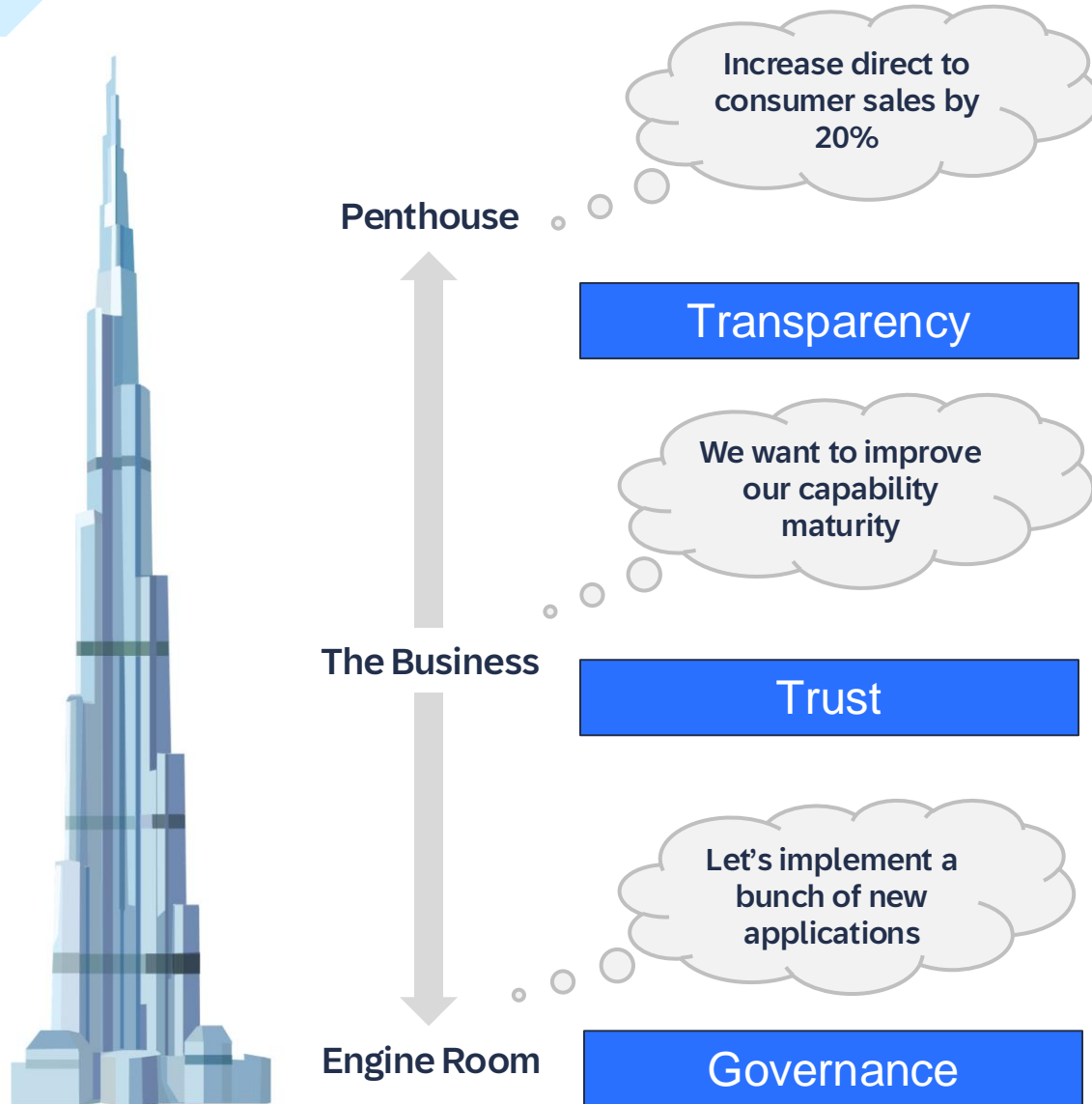
[Fujitsu](#) experienced a 46% increase in manufacturing process compliance by monitoring conformance in SAP Signavio

[TUI](#) reduced training costs by 70% and support tickets by 50% applying WalkMe in-application guidance and automation

Business transformation: From strategy to execution



Enterprise Architecture is NOT just an IT objective



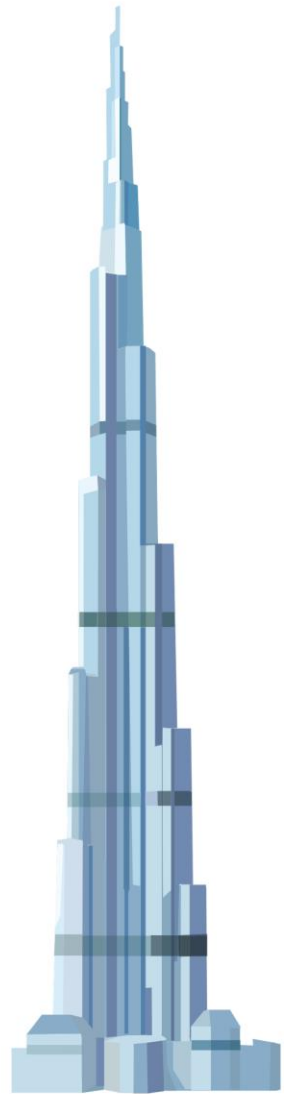
Source: The Software Architect Elevator,
Gregor Hohpe 2020

“The company leadership is under the false impression that the digital transformation is proceeding nicely, whereas the folks in the engine room enjoy the freedom to try out new technologies without much supervision.”



Gregor Hohpe

EA is the language - LeanIX is your solution

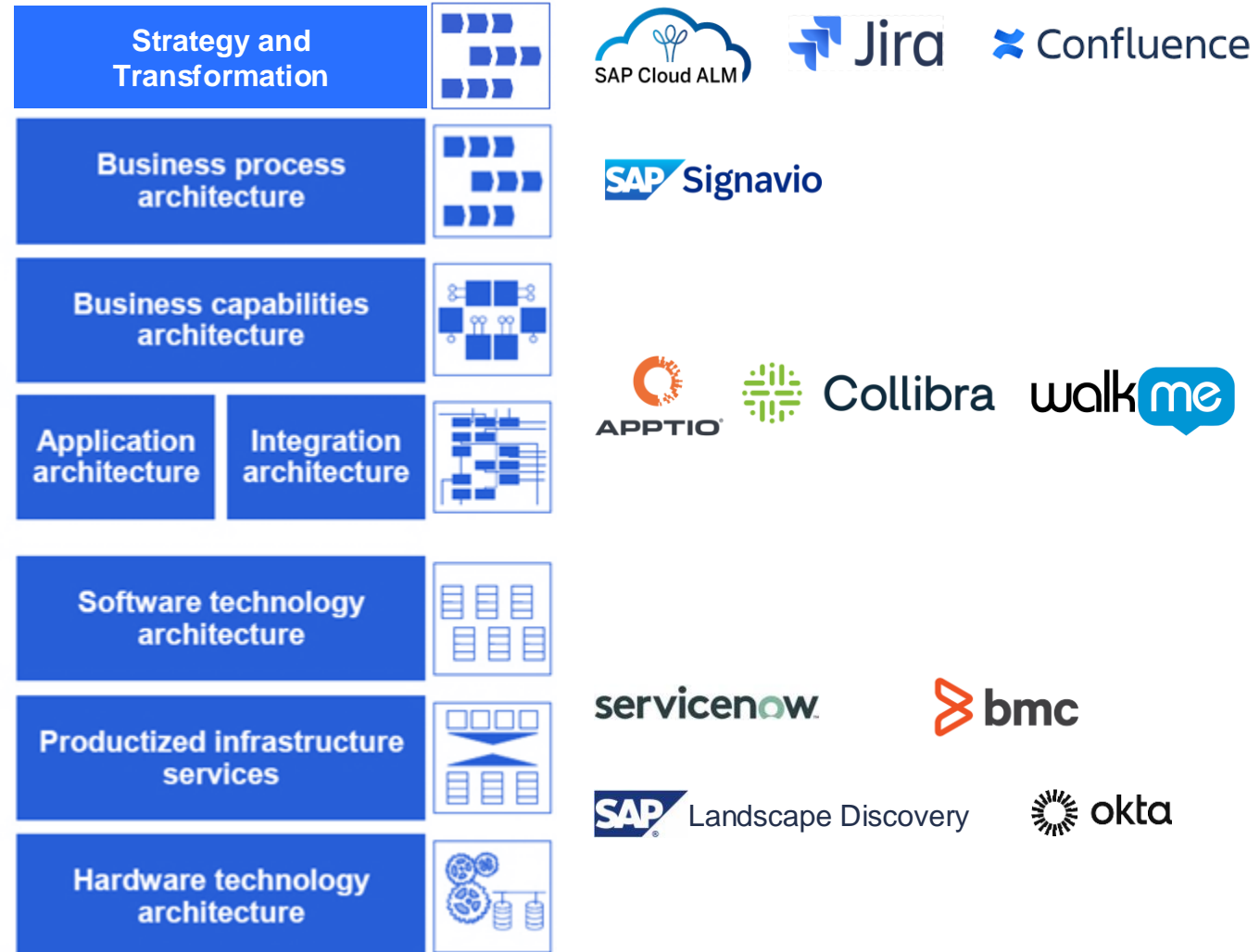


Source: The Software Architect Elevator,
Gregor Hohpe 2020

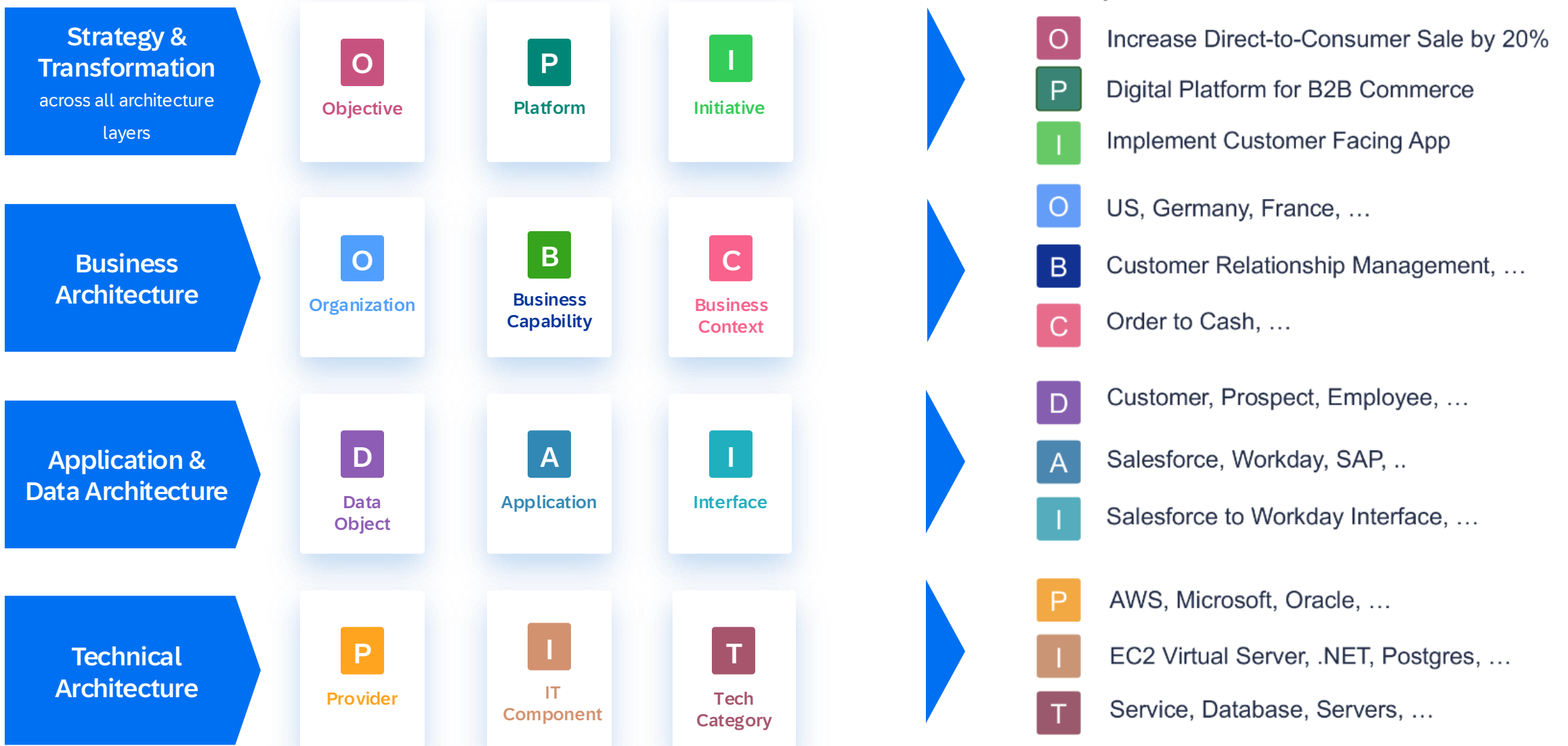
PUBLIC

Penthouse
↑
The Business
↓
Engine Room

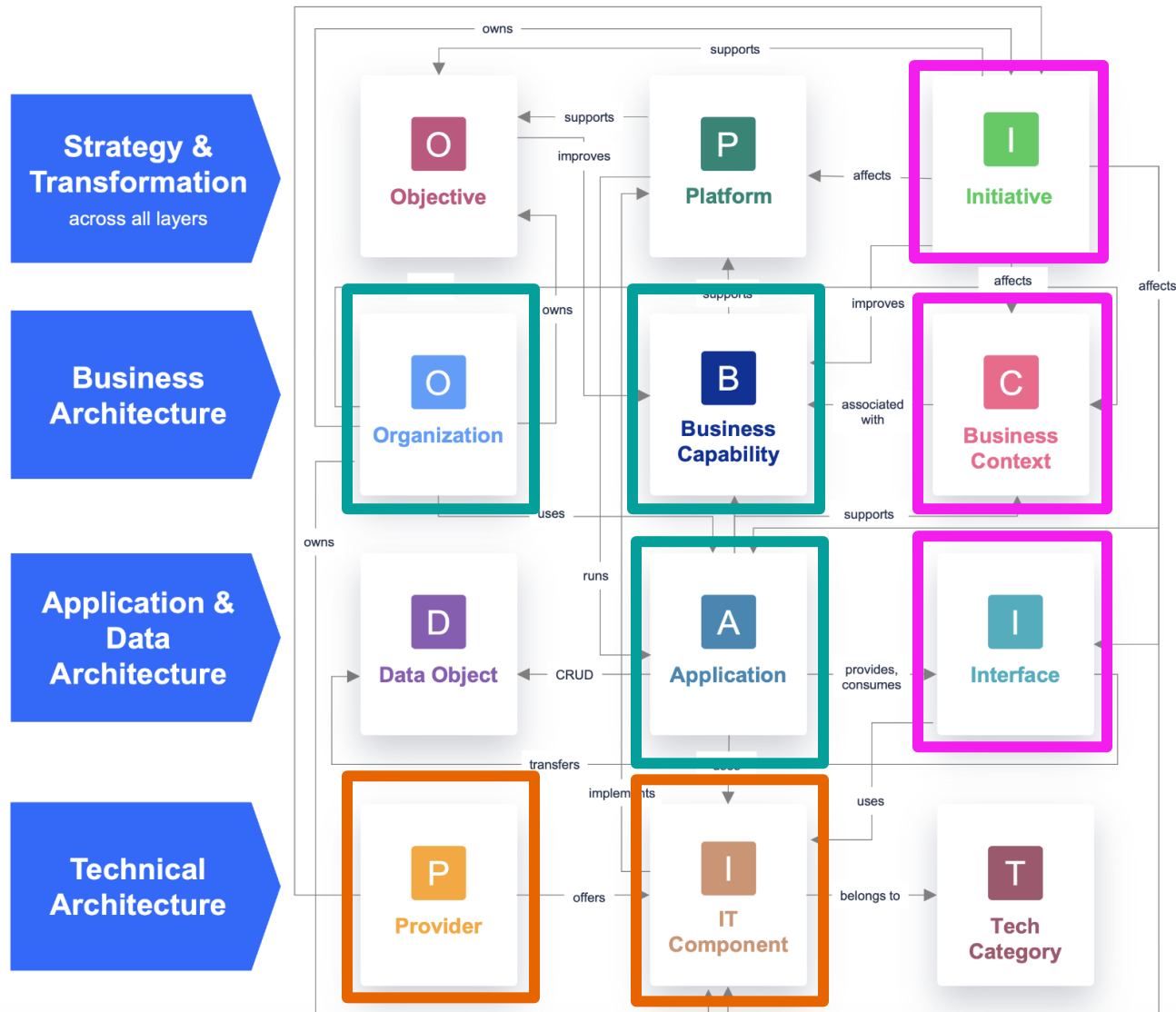
Consolidate your architecture layers



A Simple and holistic EA framework



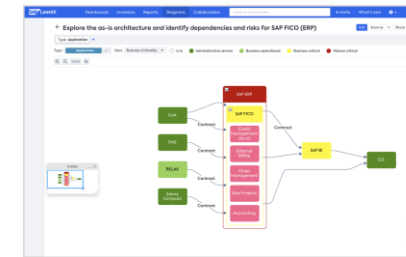
Quicker time to value than other tools



Goals & Roadmaps



Business Capability & Application Heatmaps

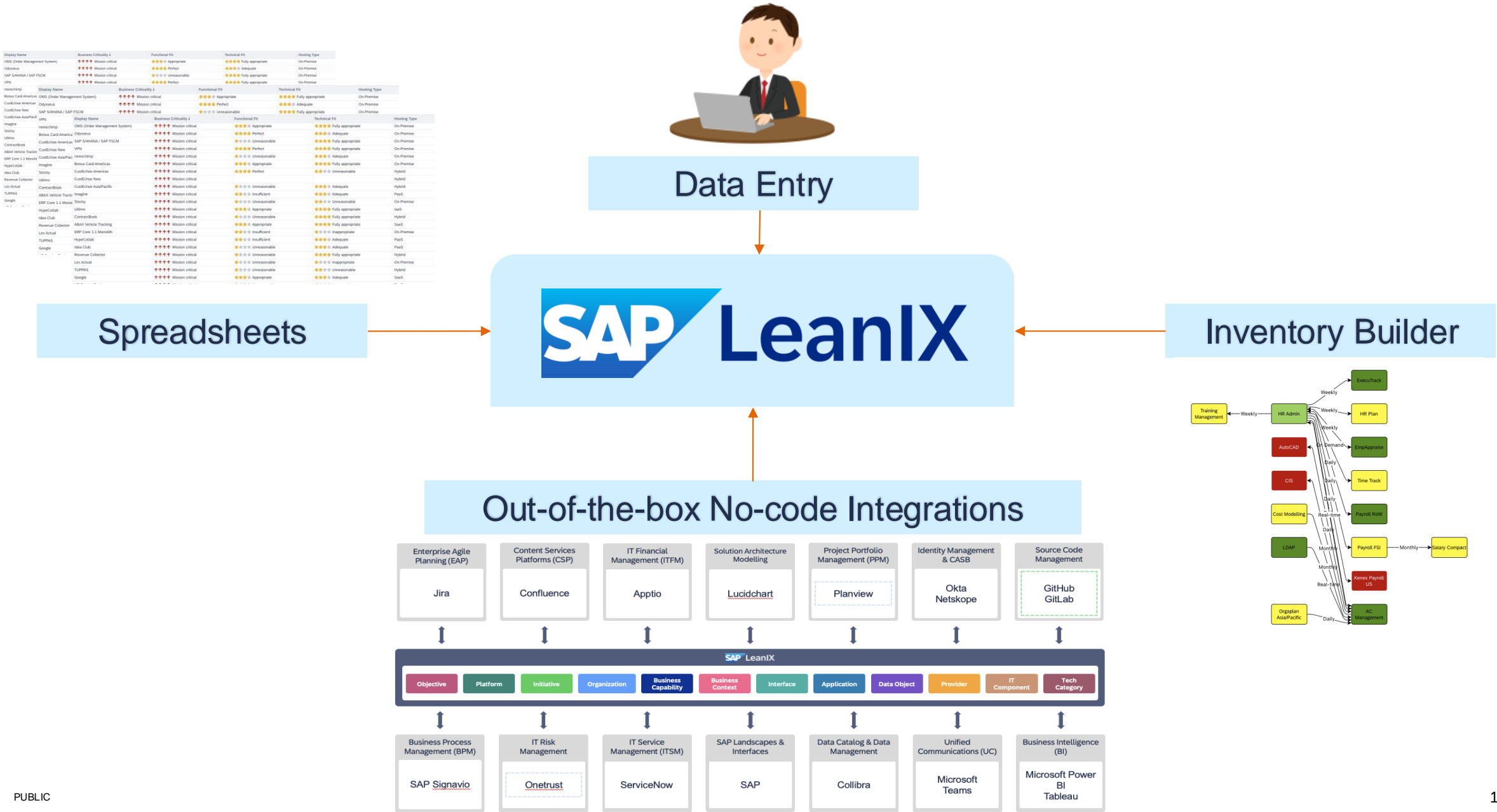


Data Flows

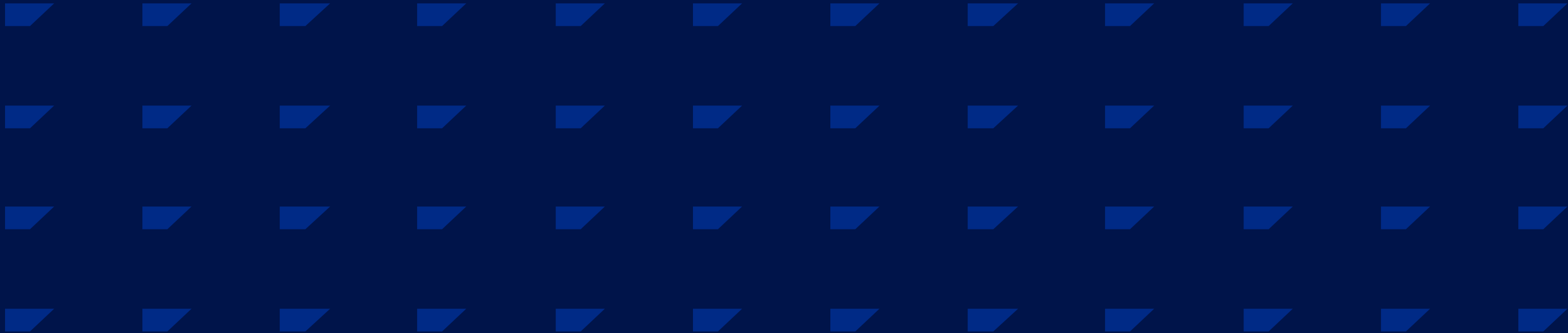


Technology Lifecycle Roadmaps

Start with the basics



AI use cases in SAP LeanIX



New Feature

Inventory Builder



SAP LeanIX **Inventory Builder**

Discoveries Summary

- Relations 28
- Business Context 14
- Business Capabilities 6
- Application 5

Discovered Fact Sheets 30 **Discovered Relations** 30

- Supply Chain
- Financial Planning & Analysis
- Business Process (Improvement)
- Accounting & Financial Close
- Inventory Planning & Management
- Inventory Planning & Management

Prompt

Fact Sheet types to extract

Business Capabilities Business Context Application IT Component Provider

Include Relations Between

Business Capabilities Business Context Application IT Component Provider

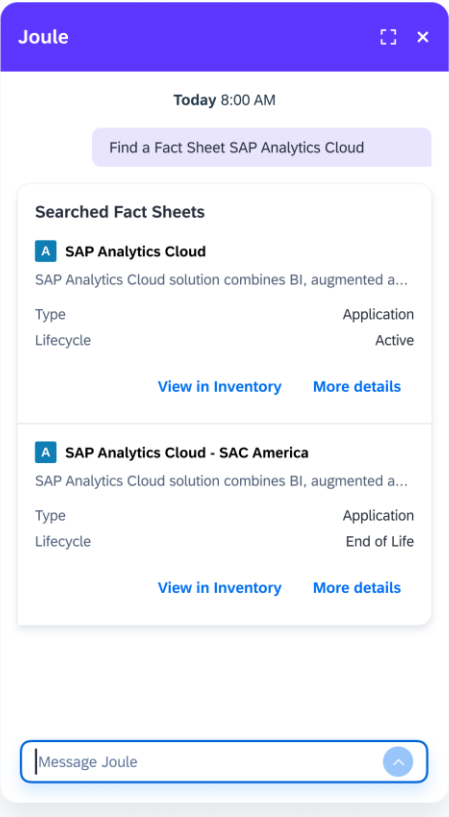
Text Prompt

The dark blue boxes are business capabilities. The light blue boxes are applications. The line of business a between SAP S/4HANA and the Business context.

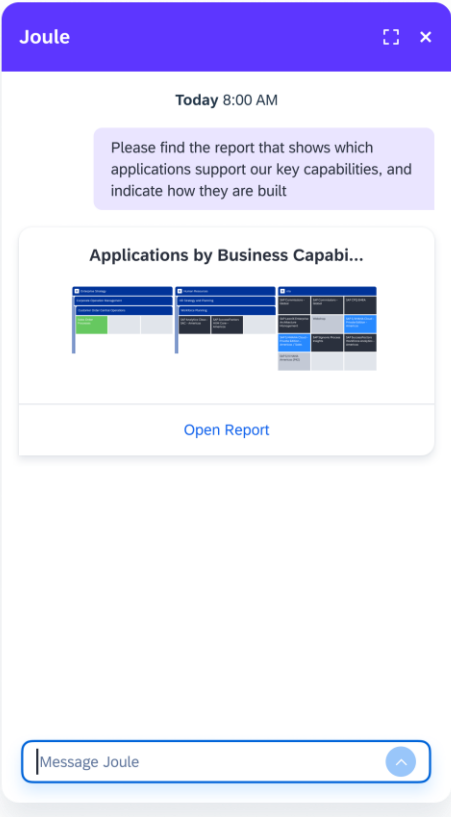
Joule with SAP LeanIX to include three different capabilities

Roadmap

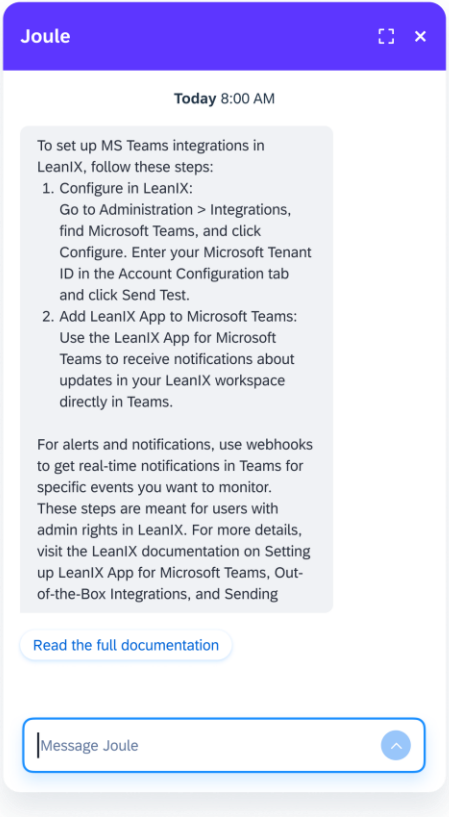
Find architecture elements (e.g., Applications) in LeanIX inventory



Navigate to LeanIX reports and diagrams from everywhere



Access LeanIX user documentation



Connected to existing SAP LeanIX endpoints

Based on SAP Help Portal

Searches

Filter

Filters



Q Search for filter options

▼ TYPE

Objective	4
Platform	6
Initiative	23
Business Capability	52
Business Context	41
Organization	38
Application	132
Interface	72
Data Object	16
IT Component	94
Provider	44
Tech Category	180

▼ HIERARCHY LEVEL

<input type="checkbox"/> Level 1	427
<input type="checkbox"/> Level 2	126
<input type="checkbox"/> Level 3	149

▼ SUBSCRIPTIONS

<input type="checkbox"/> My Subscriptions	1
<input type="checkbox"/> Alexander Beese	1
<input type="checkbox"/> Alexandre Burocchi Mauro	1
<input type="checkbox"/> n/a	701

Add type / role filter

Q More

▼ DATA QUALITY

<input type="checkbox"/> No responsible
<input type="checkbox"/> Quality Seal broken
<input type="checkbox"/> No description
<input type="checkbox"/> No lifecycle

▼ QUALITY SEAL

Inventory

+ Add Filter

🔄 40 of 702 results

Sort by: Alphabetically



Demo

I AC Management to HR Admin

Set your role · 41% complete · 2023-10-11 11:22

P accenture

Set your role · 41% complete · 2023-08-16 18:48 · 🔔

I accenture App Maintenance & Support Service (Accenture)

Maintenance and support service currently provided by our service provider Accenture (UK), as a comprehensive solution tailored to optimise and maintain our financial SAP FI), ensuring reduced downtime and smooth operations. 3 Year Contract.

Set your role · 42% complete · 2023-10-11 11:22 · Active · 🔔

D Account

Set your role · 22% complete · 2023-08-14 11:27

P acctur

Set your role · 21% complete · 2023-08-16 18:48 · 🔔

P Acoce

Acoce is a provider for graphical design tools

Set your role · 32% complete · 2023-08-16 16:40 · 💬 1 · 🔔

I Acoce Application Hosting

Set your role · 38% complete · 2023-08-29 09:21 · 🔔

A Adobe Creative Cloud

Adobe Creative Cloud is a collection of software for graphic design, video editing, web development, photography, and cloud services.

Set your role · 27% complete · 2023-08-29 09:02 · 🔔

A Adobe Creative Cloud / Adobe Acrobat Pro

Adobe Acrobat Pro helps prepare and share polished, professional documents.

Set your role · 34% complete · 2023-08-29 09:21 · 🔔

A Adobe Creative Cloud / Adobe Illustrator

Adobe Illustrator is a vector based graphics editor.

Set your role · 21% complete · 2023-08-29 09:03 · 🔔

ACTIONS

+ New Fact Sheet

📄 Export

📄 Import

ADDITIONAL RESOURCES

[SaaS Discovery Inbox](#)[SAP Landscape Discovery Inbox](#)

Joule



Hello Alexander,

How can I help you?

Talk to me naturally. For example, 'Help me searching for a Report'

Get started with Joule

Find Diagrams

Find Reports

Find Fact sheets

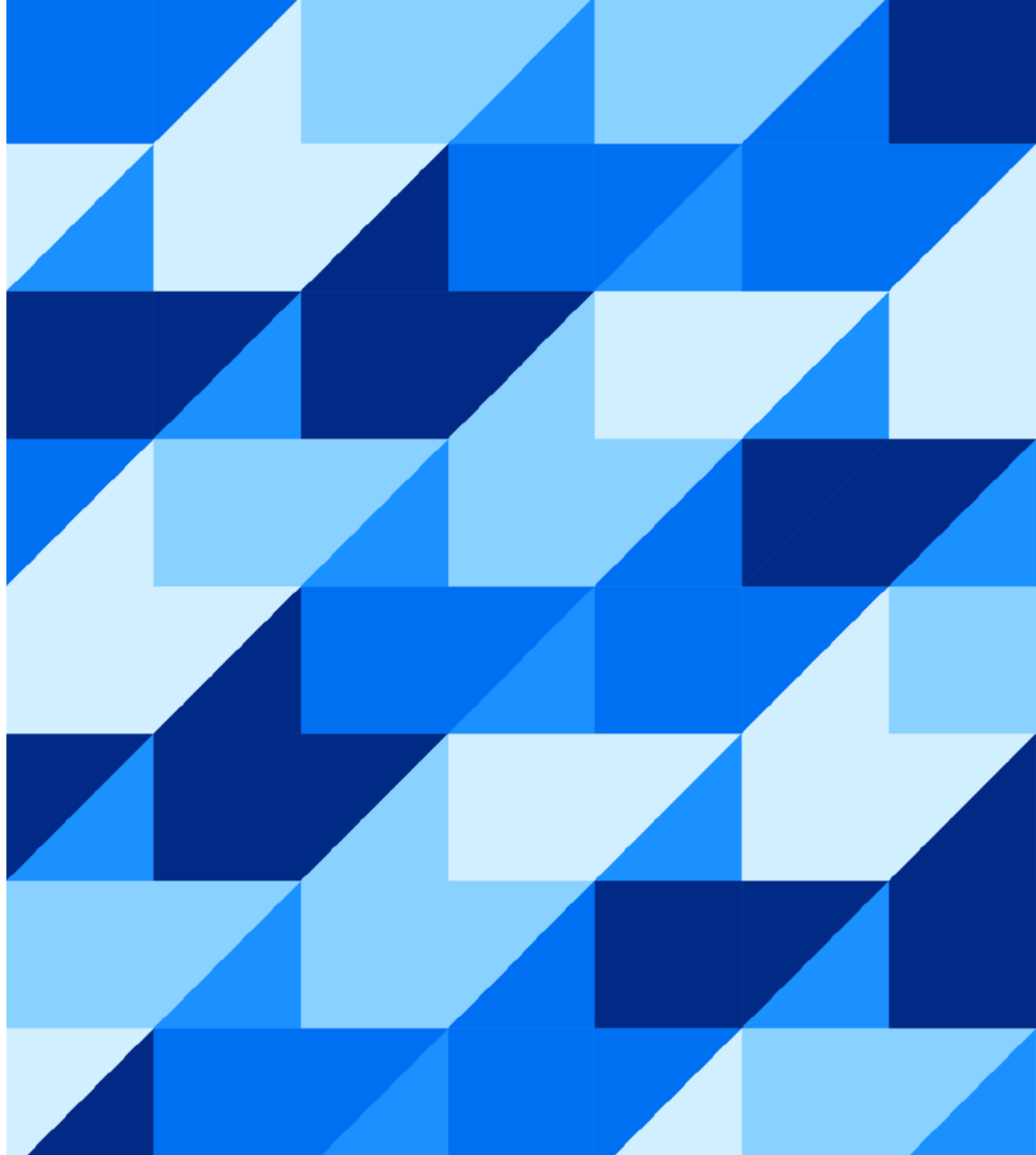
Whats the differ



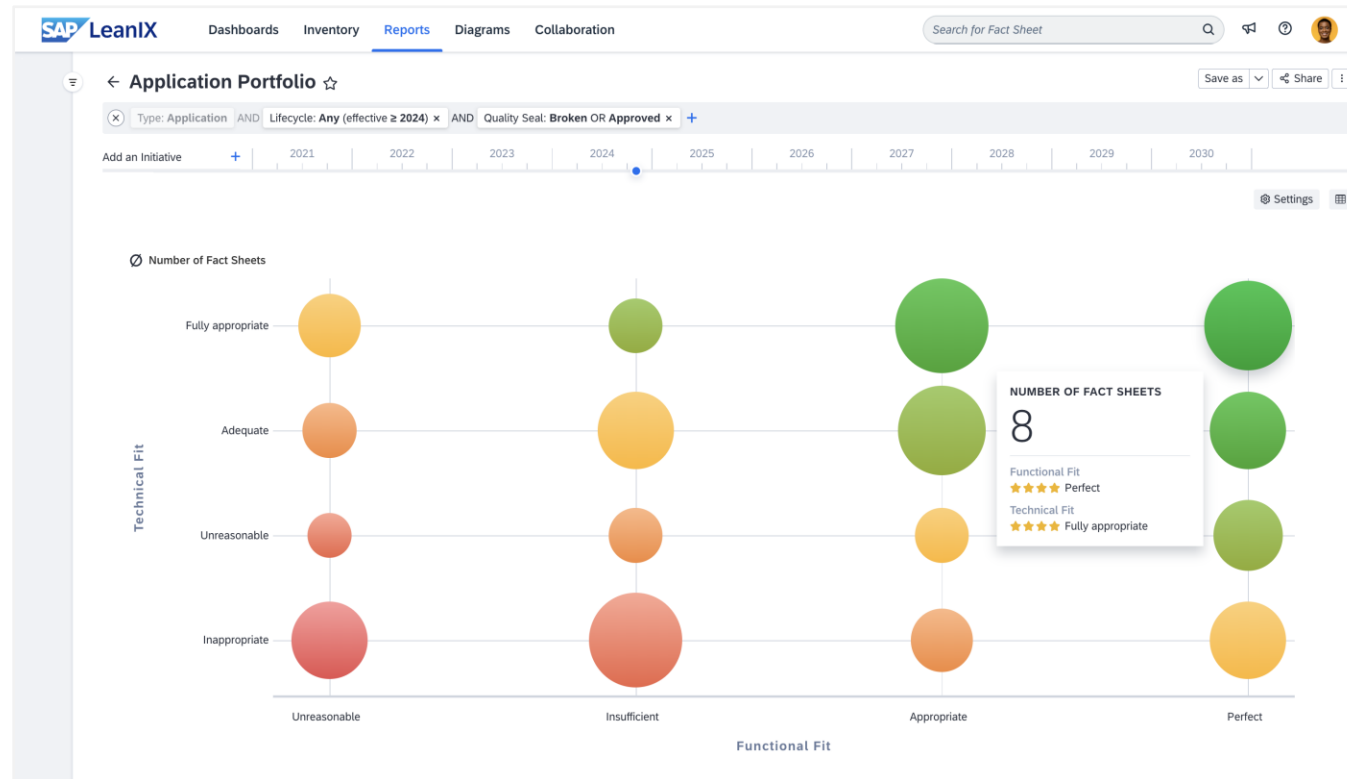
Joule is powered by generative AI and all output should be reviewed before use. Please do not enter any sensitive personal data, and avoid entering any other personal data you do not wish to be processed.

Use case examples

PUBLIC



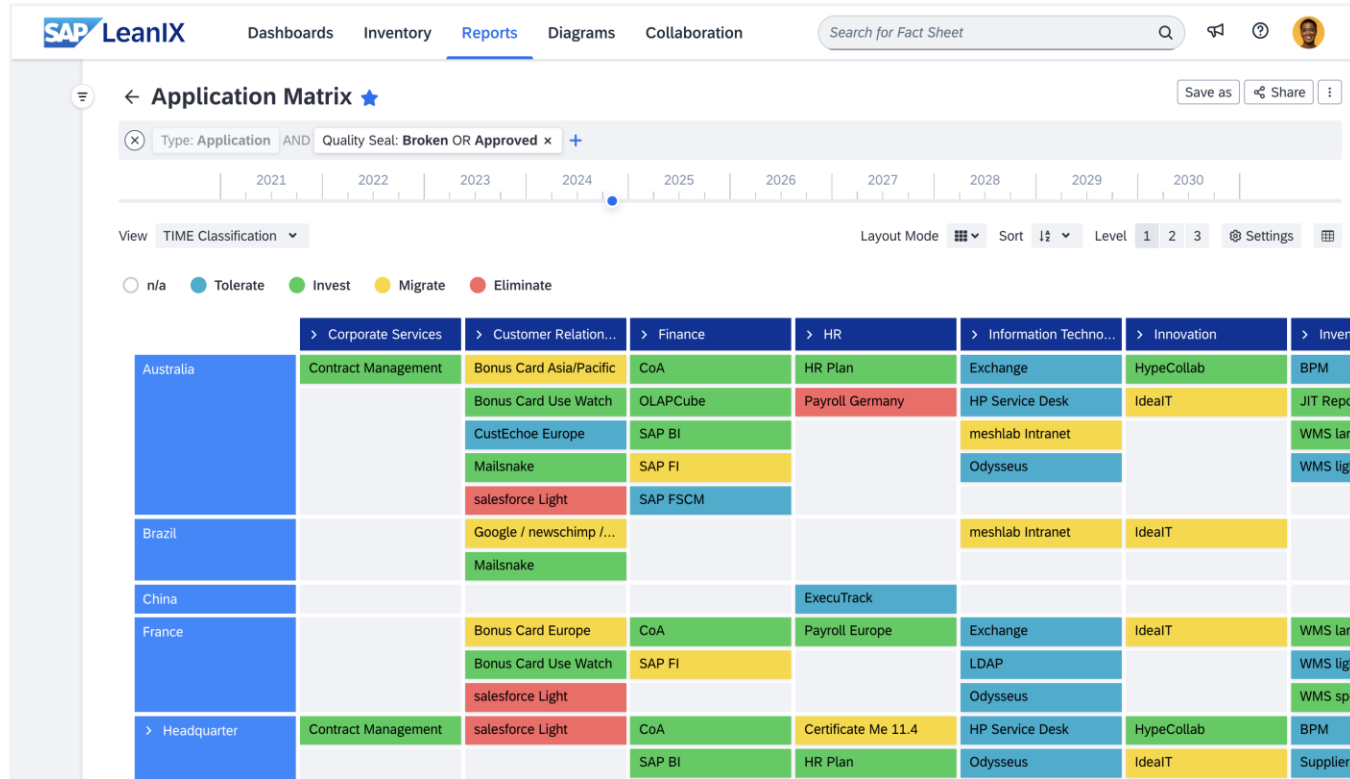
Use case: Application portfolio assessment



- Synchronize your data assets and applications
- Conduct an in-depth evaluation of each application
- Design your target application portfolio
- Prepare for application rationalization and modernization strategies



Use Case: Application rationalization

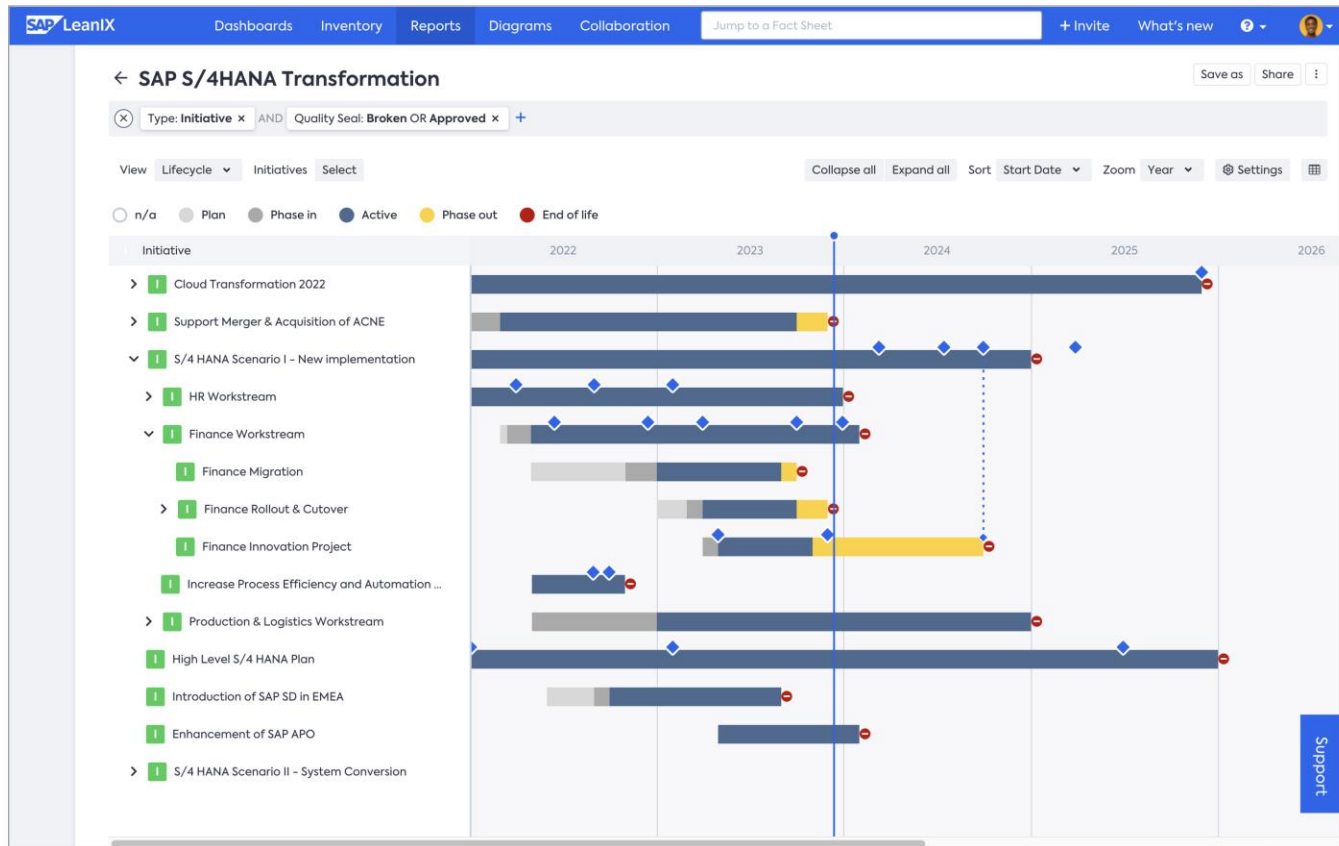


CIO / Enterprise Architect / Application Owner

- **Save \$1.2M in application costs per year** by identifying which applications and dependencies to retire
- **Save \$2.5 million when consolidating ERP solutions** by standardizing applications for each business capability
- **Free up to \$1.3M financial resource for innovation** by rationalizing IT landscapes and repurposing funds



Use Case: ERP transformation

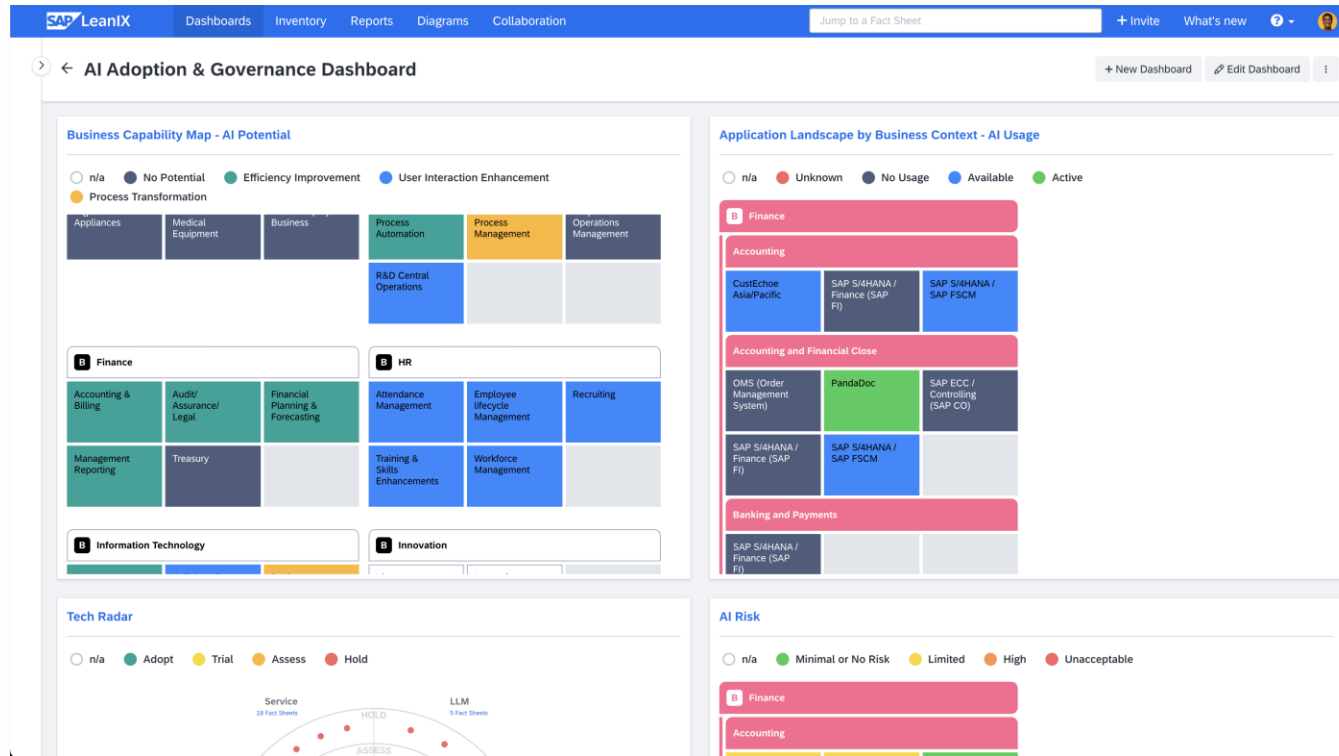


CIO / Enterprise Architect / Transformation Manager

- Analyze the current state, identify dependencies and define the target architecture
- Evaluate possible migration approaches and transformation scenarios
- Build an overall transformation roadmap, including impacts and milestones
- Implement and manage changes to the IT landscape and promote architectural governance



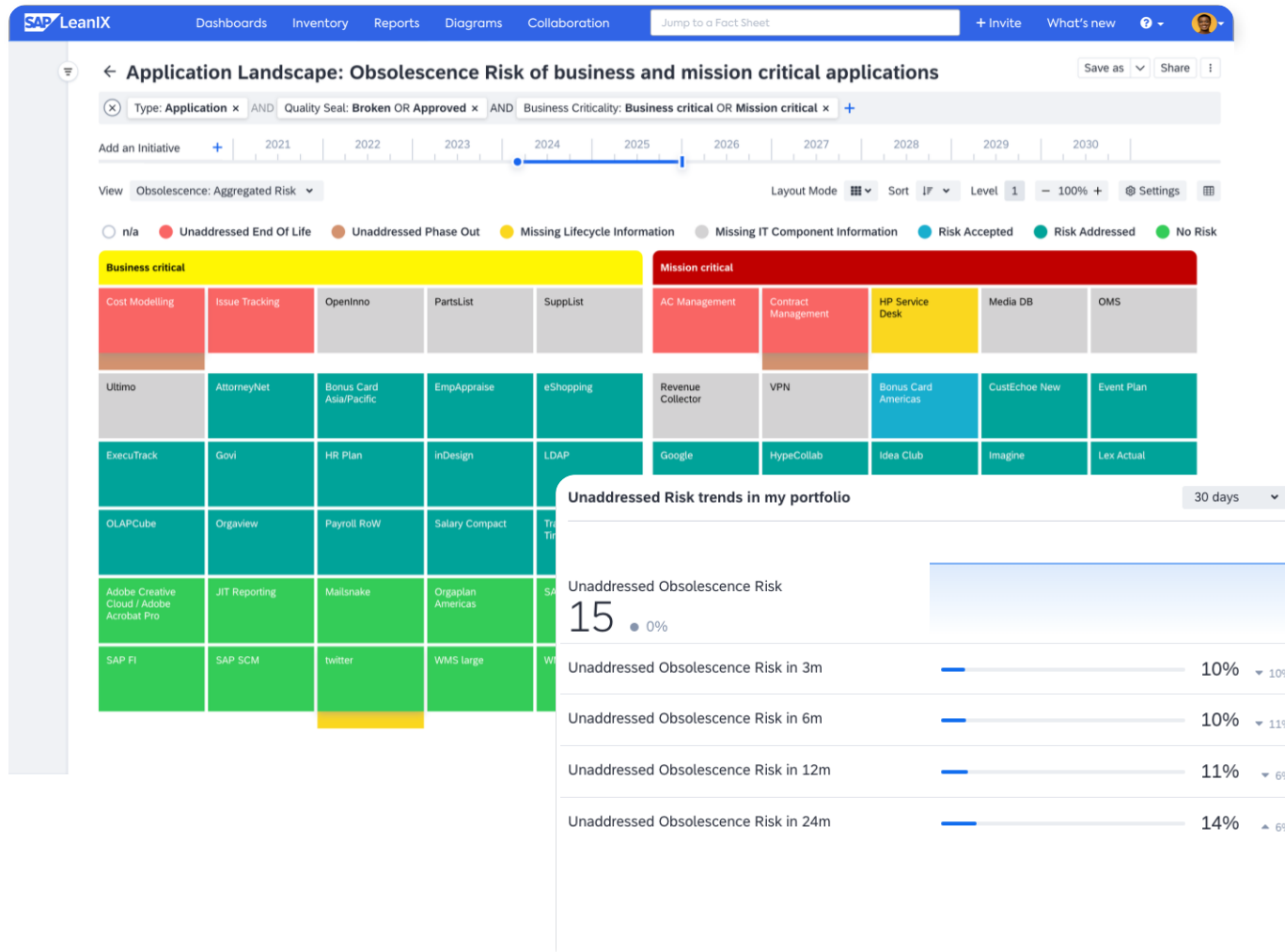
Use case: AI governance and adoption



- Capture AI usage, risk, and potential in applications to gain visibility into where and what kind of AI is in use
- Add large language model (LLM) IT components to tech radar maps to gain visibility into adoption status
- Assign AI use case potential to business capabilities
- Surface vital information to stakeholders for regulatory and compliance requirements
- Establish a definitive system of record for AI usage across the IT landscape



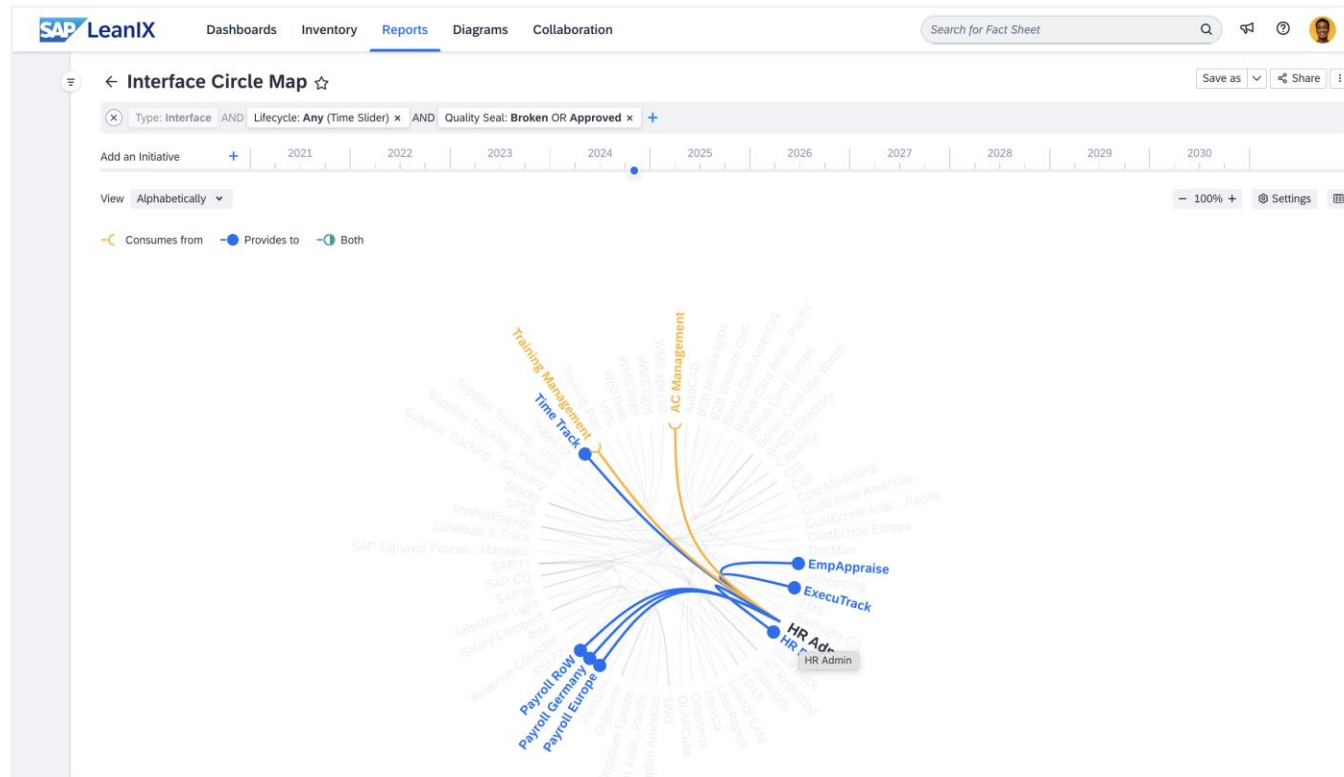
Use Case: Obsolescence risk management



- **Avoid over \$1 million in additional support costs** by uncovering 450+ Windows Servers for extended support
- **Reduce technical debts by 25% in one year** by making end-of-life technology transparent
- **Replace 45% of all end-of-life technology in one year** by identifying dependencies

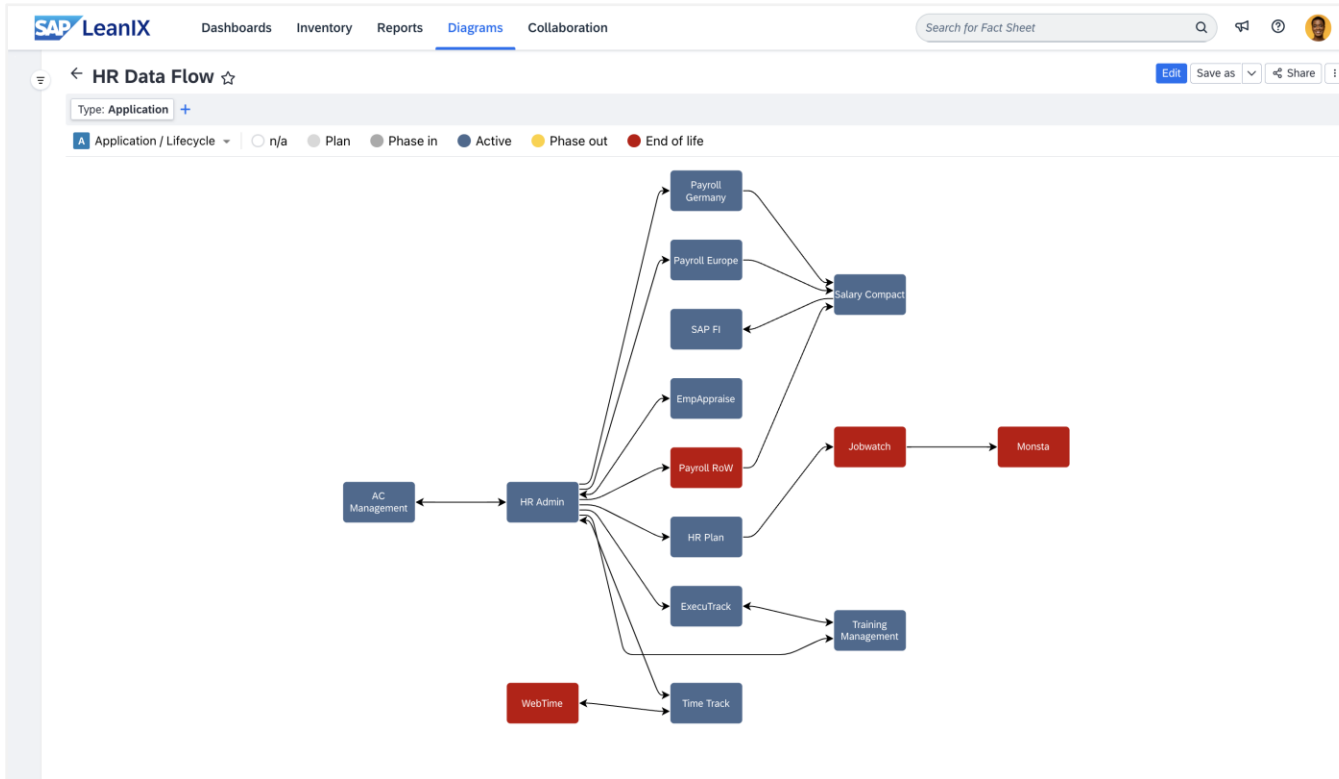


Use case: Integration architecture for APIs



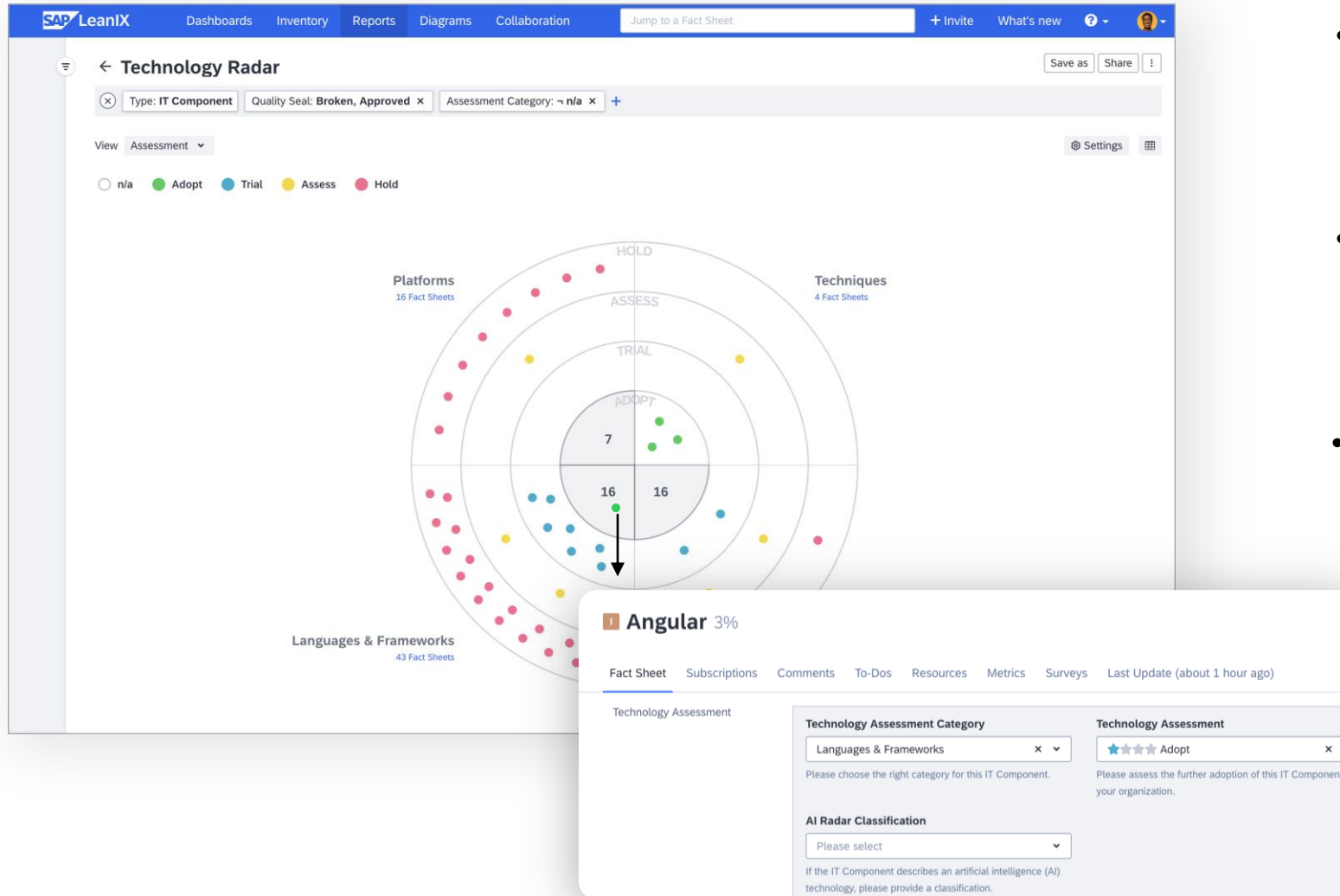
- Identify where APIs help transforming legacy systems
- Leverage external APIs as a service layer
- Inventory of public and private APIs
- Full transparency of dependencies between APIs and applications

Use case: Data usage and privacy compliance



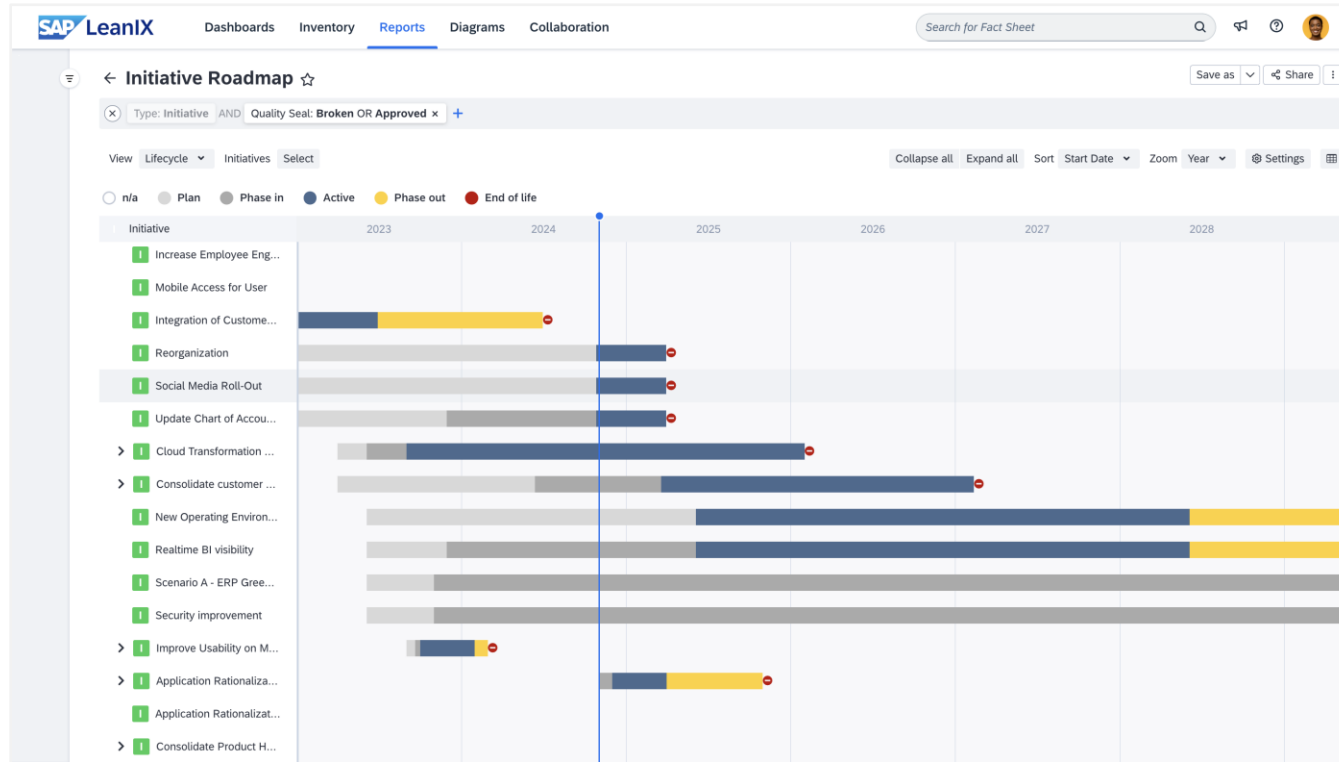
- Create transparency with an inventory of all utilized data objects
- Identify potential for modern data analytics
- Leverage powerful data flows with heatmaps
- Capture GDPR and SOC 2 compliance
- Spot data silos and know which data is available

Use Case: Technology standards management



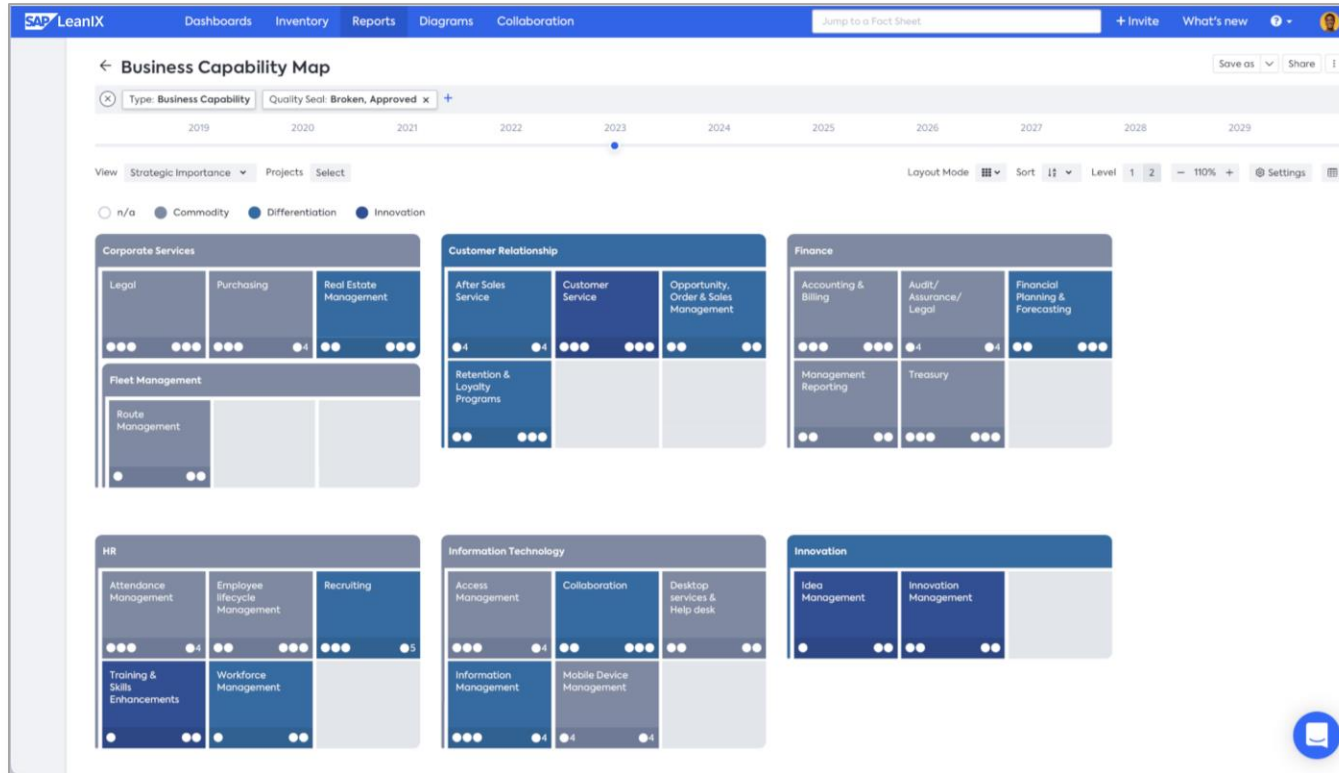
- **Accelerate** inventory building– auto-discover and match tech stacks from granular SBOM data
- **Assess** each technology for adoption, with full visibility into open-source components are used
- **Broadcast** adoption decisions with best-practice Tech Radar for improved standards adoption

Use Case: Roadmap & transformation planning



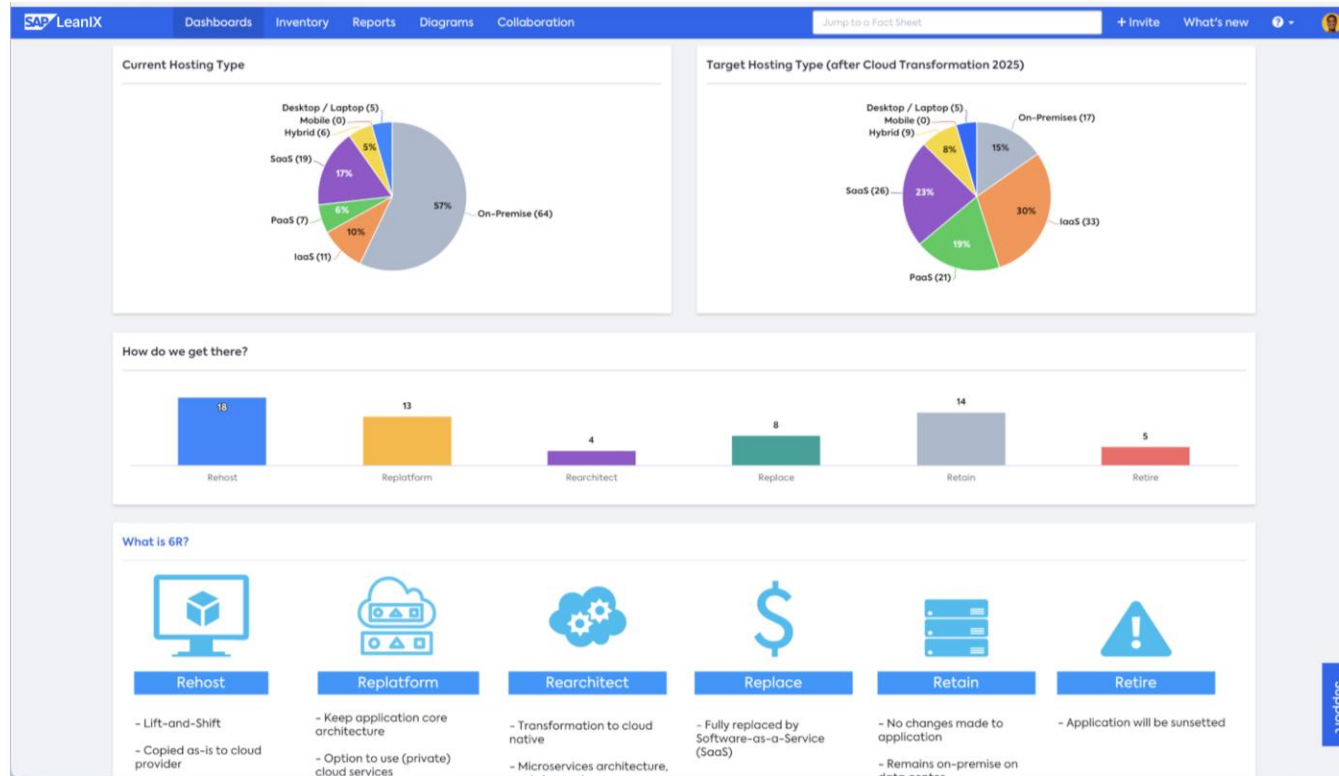
- Complete 20% more IT transformation projects on time by effectively planning of architectural changes
- Accelerate decisions and project starts by 40% through insights into dependencies in the IT portfolio

Use case: IT strategy planning



- Align IT strategy to business objectives, regulatory and sustainability requirements
- Prioritize investments into business capabilities of choice (e.g., Gartner Pace-Layers)
- Define architectural changes and plan different scenarios to be decided on
- Build an IT roadmap reflecting the strategy and make it transparent to stakeholders

Use case: Cloud transformation



- Single source of truth for the governance committee
- Dashboards to improve internal communication
- Accelerate stakeholder buy-in
- Streamline decision making
- Manage conformance to regulatory technical standards

Get full transparency into your SAP landscape



Automatically discover

- **Maintain an up-to-date inventory of your landscape** through automated discovery
- **Easily understand and model** the discoveries aligned with SAP best practices



Eliminate the blind spots

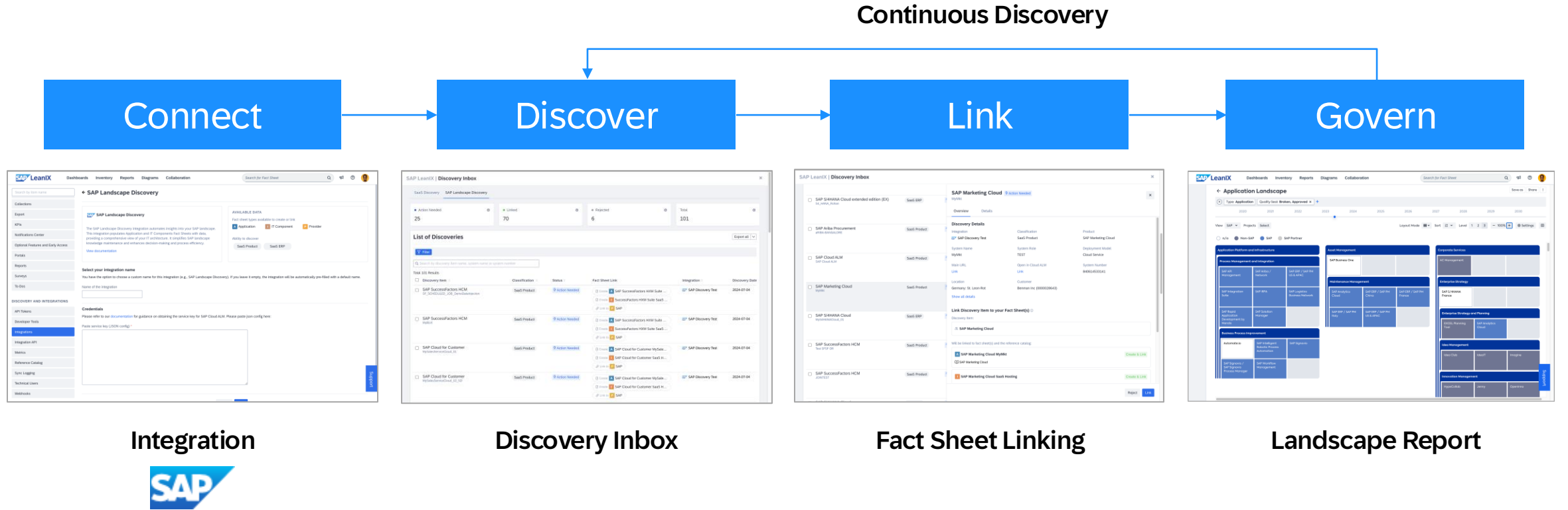
- **Identify & discover** all the SAP on premise, cloud and SaaS applications
- Leverage catalogs to **enrich fact sheets and ensure data completeness**



Transform with confidence

- **Evaluate and compare** your SAP architecture based on business capabilities and criticality to pinpoint your starting point effectively.
- **Plan your transformation** knowing your current SAP landscape

Steps to SAP landscape discovery



Get automated visibility into your SAP landscape

SAP LeanIX | Discovery Inbox

SaaS Discovery | SAP Landscape Discovery

Action needed 10 | Linked 60 | Rejected 95 | Total Discovery items 195

List of discoveries

Filter

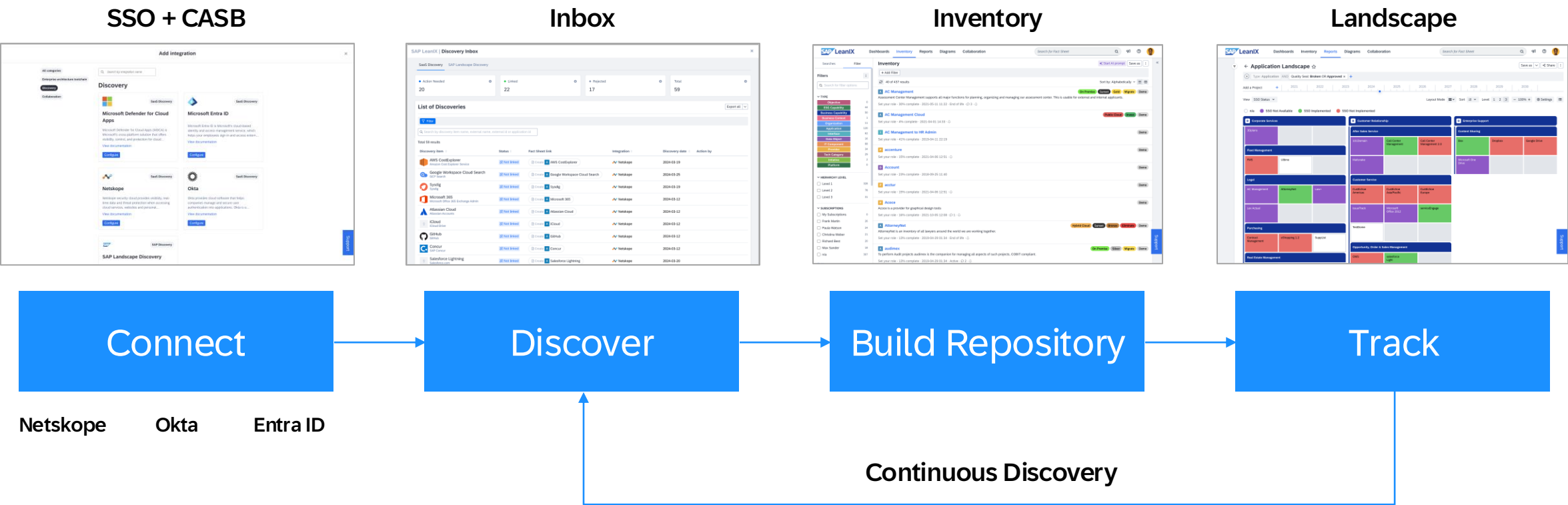
Search by Finding or Fact Sheet name

Total 159 results

Discovery item	Classification	Status	Fact Sheet link	Integration	Discovery date	Action by
<input type="checkbox"/> SAP SuccessFactors HCM Core HCM1	SaaS Product	Action needed	Link to SAP SuccessFactors HCM Core (HCM1) Link to SAP SuccessFactors HCM Core SaaS Hosting Link to SAP	SAP Landscape Discovery	28.08.2024	-
<input type="checkbox"/> SAP ERP HCM Y34ZH	On-Prem ERP	Linked	Link to SAP ERP HCM (Y34ZH) Link to SAP ERP HCM 9 Link to SAP	SAP Landscape Discovery	28.08.2024	Auto-linked
<input type="checkbox"/> SAP S/4HANA Cloud P11	SaaS ERP	Action needed	Link to SAP S/4HANA (P11) +8 Link to SAP S/4HANA Cloud SaaS Hosting Link to SAP	SAP Landscape Discovery	28.08.2024	-
<input type="checkbox"/> SAP Business Suite PSM	On-Prem Product	Action needed	Create SAP Business Suite (PSM)	SAP Landscape Discovery	28.08.2024	-

- Gain a complete overview of all SAP cloud and on-premise systems with an out-of-box integration to SAP through Cloud ALM
- Reduced time and effort to collect and maintain SAP landscape information by creating and linking fact sheets
- Faster time to value by providing automatic and continuous insights for strategic decision making
- Identify opportunities to save costs, promote data accuracy and completeness

Continuous SaaS discovery in 4 steps

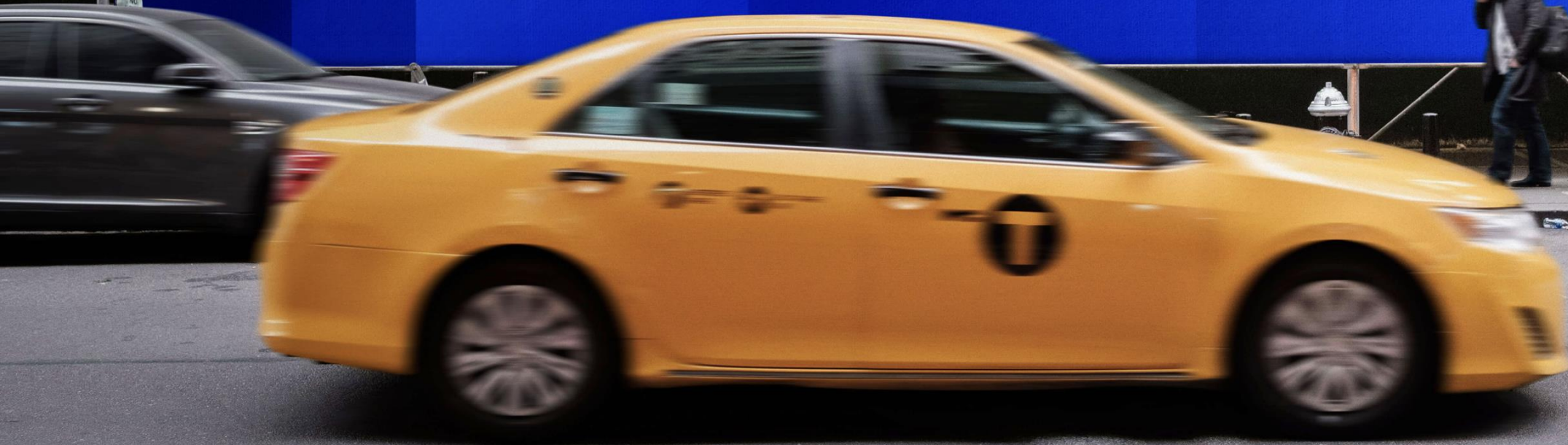


Make transformations *fast*, not *furious*.

One-off migration & modernization projects take too long, cost too much and rarely stick the landing. We're LeanIX and we enable a different kind of change that's more data-driven, collaborative and repeatable.

It's called Continuous Transformation and it changes — everything.

SAP LeanIX



Thank you.

Contact information:



Projit Mookerjee

Senior Solution Advisor,
SAP BTM Solution Advisory
projit.mookerjee@sap.com

