

Trusted Partner for your Digital Journey

SAP Professional Days 2017

Petar Staykov

Head of Analytics ATOS Bulgaria

The logo for Atos, featuring the word "Atos" in a bold, white, sans-serif font. The letter 'o' is stylized with a white outline and a dark blue fill.

SUMMARY

1

About Atos

2

SAP S/4HANA

3

BW on HANA Migration project

4

Results & Lessons Learned



Atos
at a
glance

About Atos



Atos
Worldwide IT Partner

Atos is a leader in digital services delivering Systems Integration services, Consulting, Managed Services & BPO, Cloud operations, Big Data & Cyber-security solutions as well as e-payments and transactional services.

€12 billion annual revenue

Atos operates under the brands Atos, Atos Consulting, Atos Worldgrid, Bull, Canopy, Unify and Worldline. Atos is a Societas europaea (SE).

100,000 business technologists circa

Atos is the Worldwide Information Technology Partner for the Olympic & Paralympic Games.

72 countries around the world

Atos is a TOP globally leading SAP Partner



12,000+ skilled SAP professionals

Local SAP teams in 40+ countries

6,200+ SAP projects in 90+ countries

50+ S/4 projects

Built and manages one of the **world's largest** HANA Private Cloud

3 million+ SAP End-Users supported

A grey world map graphic is positioned behind the text '3 million+ SAP End-Users supported'.

SAP Partner for 32 years & SAP GPRs Partner

Global SAP-certified in Hosting, HANA Operations, cloud and AM services

SAP-certified **bullion** server for SAP HANA up to 16TB

Atos in Bulgaria

- Atos Bulgaria is presented on the Bulgarian market as a result of the merger between Siemens IT Solutions and Services and Atos Origin in 2011.
- In Bulgaria the company is from 1995 and today we have ~1000 employees (~400 SAP consultants) with more than 80 SAP customers and above 150 SAP projects. The company is a certified SAP partner for selling licenses and offers IT consulting, implementation and maintenance of SAP solutions, together with a whole range of innovative IT solutions such as Workplace-as-a-Service, Managed Print Services, Managed Infrastructure, Hosting, Outsourcing, Cloud services, etc.



ATOS Bulgaria Competency Center



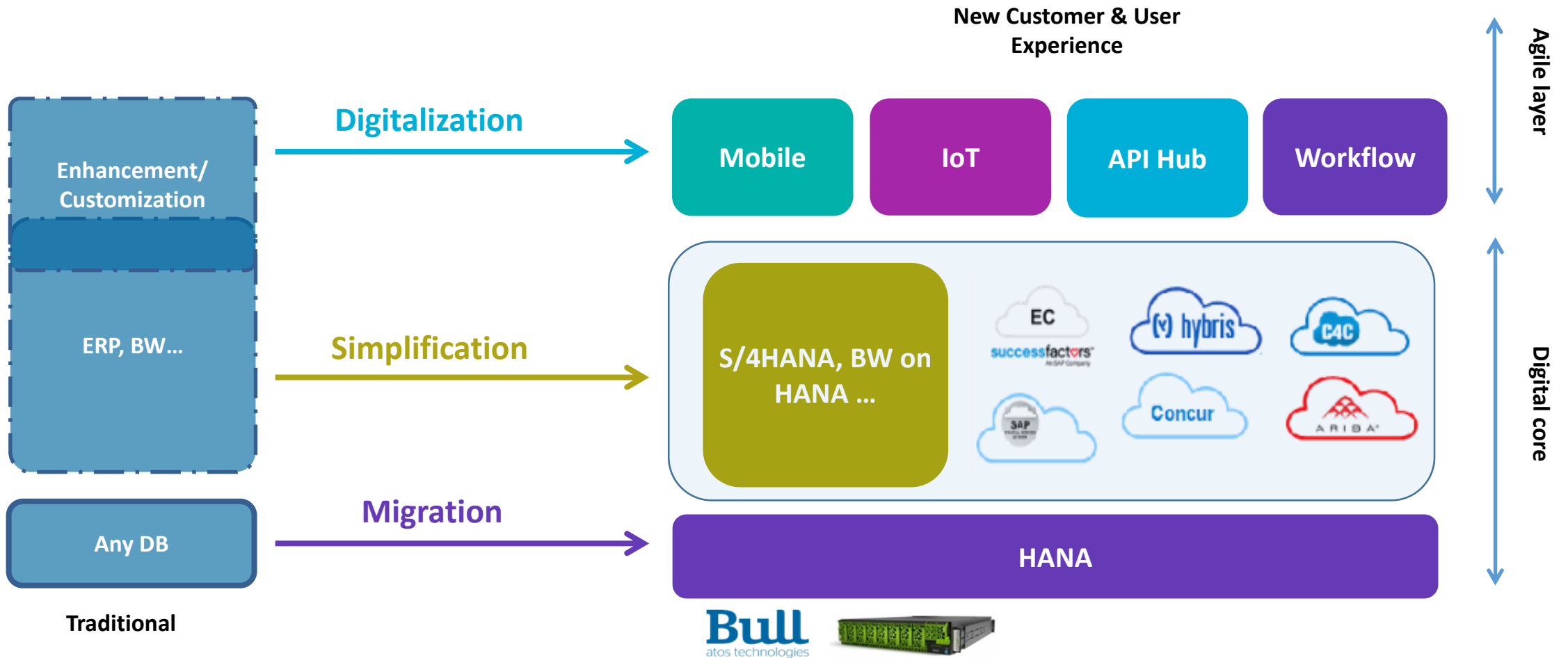
- ▶ ATOS Bulgaria Competency Center, initial focus on beverage and bottling industry
- ▶ Multiplying business globally by leveraging industry expertise
- ▶ Development of credentials, GTM/ pre-sales and delivery of project key positions



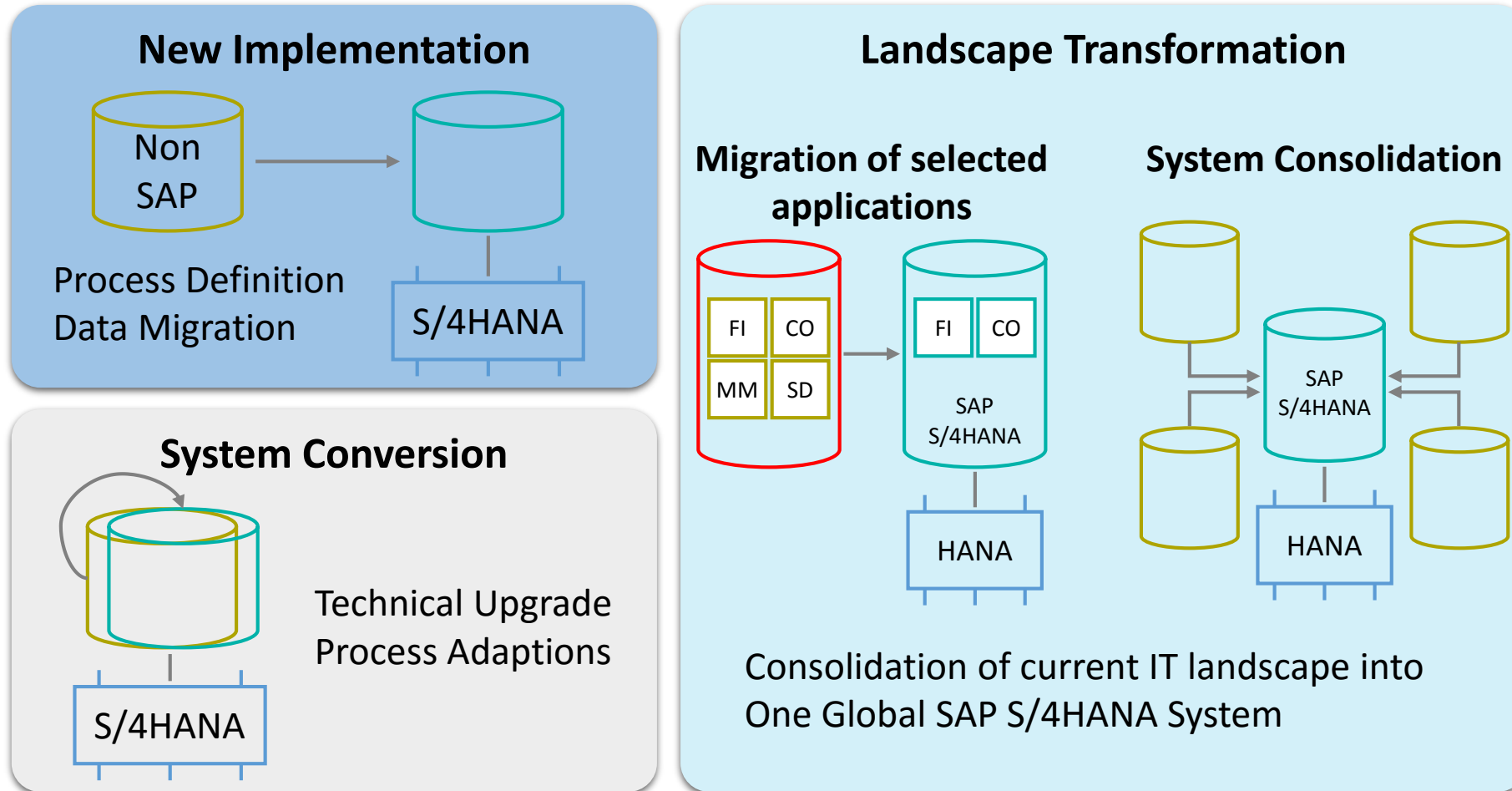
- ▶ 400+ employees with IT and domain expertise
- ▶ Part of Atos B&PS division with 32.000 business technologists
- ▶ Our services include:
 - Application development/deployment
 - Application support 24*7
 - Infrastructure deployment/support 24*7
 - Application and infrastructure performance monitoring 24*7
- ▶ Our expertise covers:
 - SAP, SAP HANA, Oracle, Microsoft, HP, IBM, Bull, Cisco, etc
- ▶ Local practices are supporting on site services to ensure customer intimacy
- ▶ Own SAP certified training center

2 SAP HANA

The transformation Journey



S/4HANA Transition scenarios



Atos S/4HANA unique Positioning



**Comprehensive
S/4 HANA
Capabilities**

- 2.000+ consultants trained on S/4HANA & HANA
- Global S/4HANA Center of Excellence
- E2E service portfolio: strategy, design, build/migration, operate, HANA applications



**Unique S/4HANA
Tools and
Accelerators**

- Atos S/4HANA Value Engineering Framework
- Proprietary S/4HANA Tools and Accelerators
- Industrialized S/4HANA Migration Factory
- SAP HANA Lab and SAP Innovation Hub



**Flexible SAP HANA
Hosting and Cloud
Services / Leading
HANA appliance**

- Atos Hosting and Outsourcing services (Data Centre in Sofia)
- Canopy private cloud solutions
- Optimization of IT cost and capex expenditure through flexible pricing
- Bullion – own SAP HANA certified hardware

One-stop-shop for SAP environment

SAP Digital Enterprise Transformation

SAP HANA & S/4HANA Migration

SAP Application Management

SAP Basis & Hosting Services

SAP Infrastructures, Licenses & Maintenance

An end-to-end
SAP capabilities

SAP & DIGITAL TRANSFORMATION SERVICES



SAP TRADITIONAL AM & HOSTING SERVICES



INFRASTRUCTURES FOR SAP



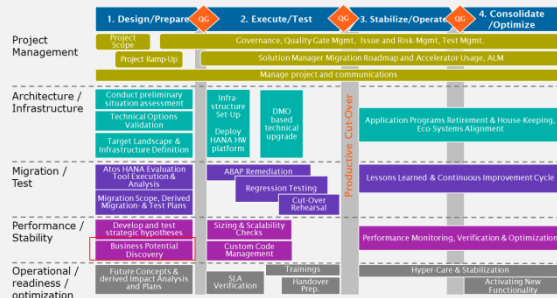
Atos S/4HANA types of services

Focused S/4HANA Quick Start Services



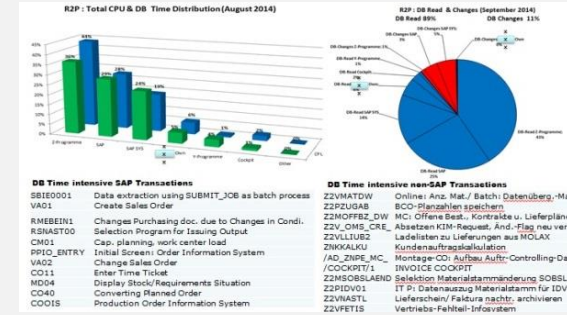
- Driving business value generation
- Accelerating technical realization

Accelerated S/4HANA Delivery



- Industrialized approach
- Migration factory

Advanced S/4HANA Tools & Accelerators



- Atos HANA Evaluation Tool
- Atos HANA Business Process Analyzer

Full E2E S/4HANA Service Catalogue (target)

DESIGN	BUILD	OPERATE
Consultancy <ul style="list-style-type: none"> S/4 HANA Strategy consultancy TCO + deployment advice Discovery workshop / new functions S/4 HANA Demo's Assessments for S/4 HANA Atos S/4 HANA LAB <ul style="list-style-type: none"> Proof of Concepts S/4 HANA application development / Live Studio Reporting Design <ul style="list-style-type: none"> Infrastructure architecture design covering - Network, Security, High Availability, DR, Business Continuity SAP Architecture Data-Aging strategy Deployment projects Planning / costing / testing On-premise design Simple Finance / Central Journal 	Deployment <ul style="list-style-type: none"> Rapid deployment solutions Hardware procurement Licensing Technical implementation HANA certified technical consultants Project management HANA Appliance configuration Testing, incl. Interfaces Data migration SAP upgrades <ul style="list-style-type: none"> SAP Fiori / SAP River Custom Code Tuning SLT deployment Migration Factory <ul style="list-style-type: none"> SAP HANA database migration SAP ERP data migration to S/4H Planning, preparation, testing 	Operations <ul style="list-style-type: none"> Application Functional mgmt. SAP Basis Technical mgmt. SAP Data replication Technical interface mgmt. SAP Infrastructure mgmt. SAP Hardware mgmt. SAP Database management Service Desk Specialist HANA support DC Hosting (rights/hore delivery) ITIL Service management ATOS HOSTED CUSTOMER / ON-PREMISE
	HANA APPS <ul style="list-style-type: none"> Design thinking workshops Atos HANA as a Service (Paas, SaaS, BYOL) Atos IS on HANA, BW on HANA Atos HANA BI OnDemand Atos HANA Accelerators (RDS) Custom in-memory apps 	<small>some services may be operated by customer or Atos when on-premise</small>

- Design, build/ migrate and operate
- From consulting to technical implementation

3 BW on HANA Migration project

Project Objectives



Atos
Worldwide IT Partner



From 4 to 1 productive systems
Reduced data duplication



Faster reporting in all areas



Real Time Profitability Data

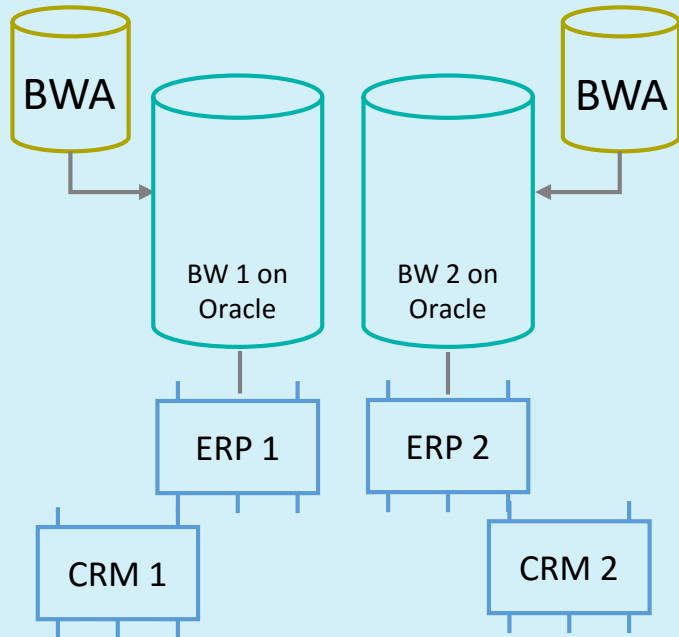
BW in System – pre HANA

- BW System on Oracle 7.3
- ~ 13000 Users
- ~ 4000 Cubes
- ~ 60 Production Plants
- ~ 400 Production Lines
- ~ 400 Distribution Centers
- > 2 700 000 Customers
- > 500 SKU
- > 125 000 Orders a Day
- 8 Time zones
- Extractors from SAP ERP, CRM, APO, HR, SRM...
- 250 Billion records

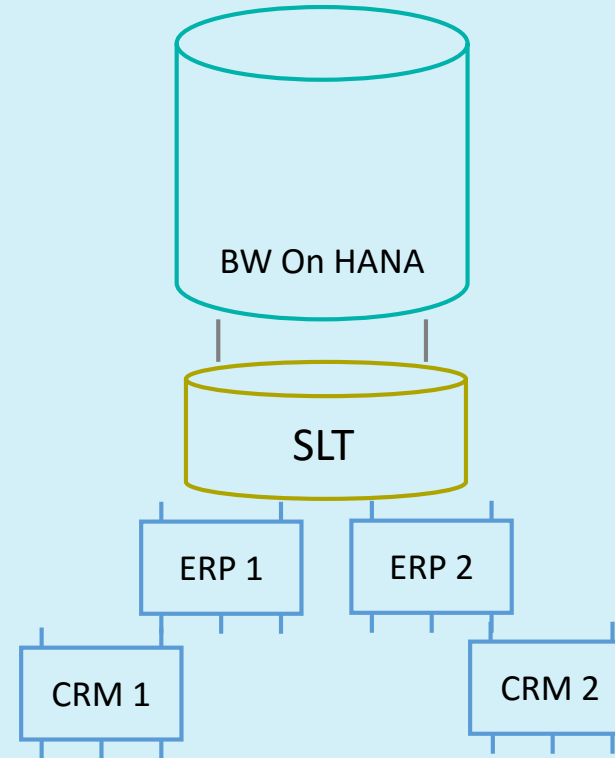
System Landscape



Before



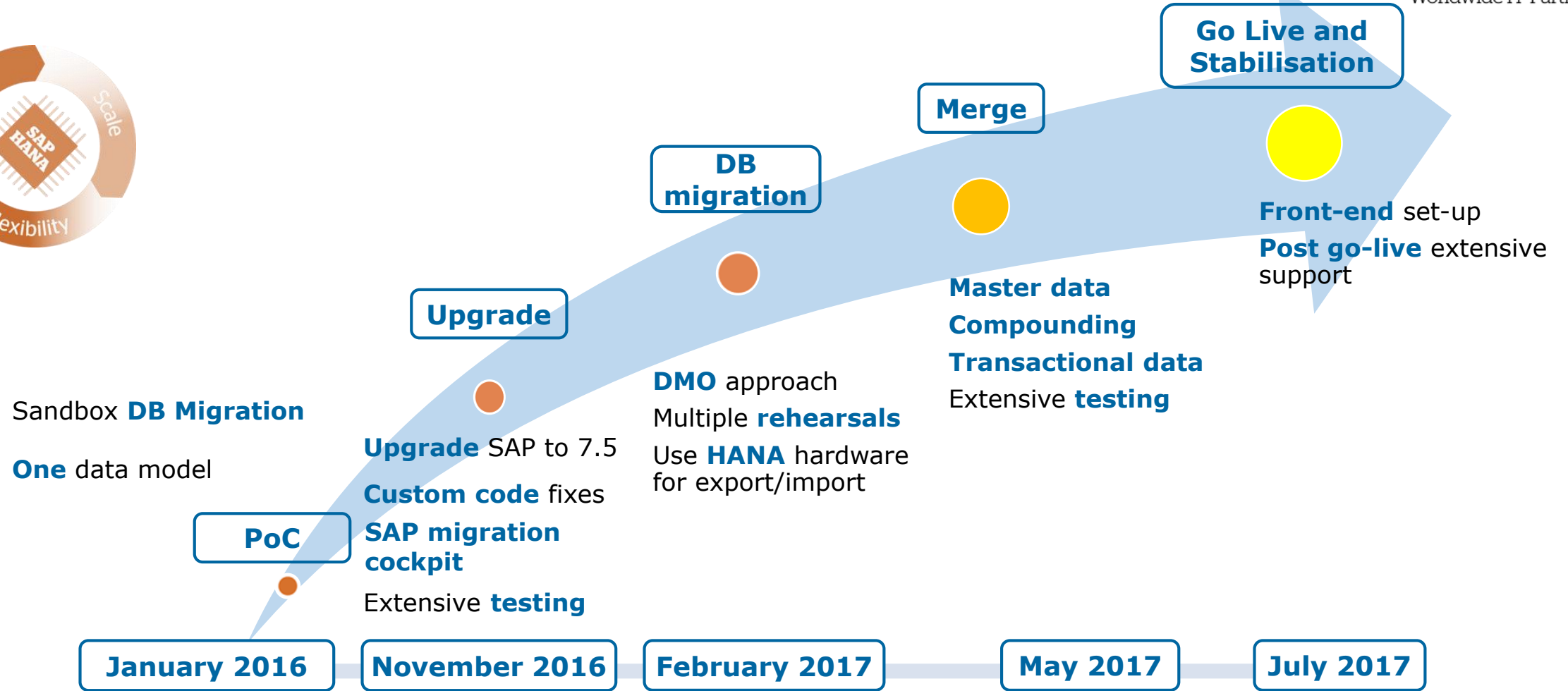
After



Divide and conquer



Atos
Worldwide IT Partner



Proper sizing



Atos
Worldwide IT Partner



- ZBW_HANA_MIGRATION_COCKPIT
 - System Sizing
 - Cubes compression
 - Large basis and administration tables

Archiving & Housekeeping



Custom code

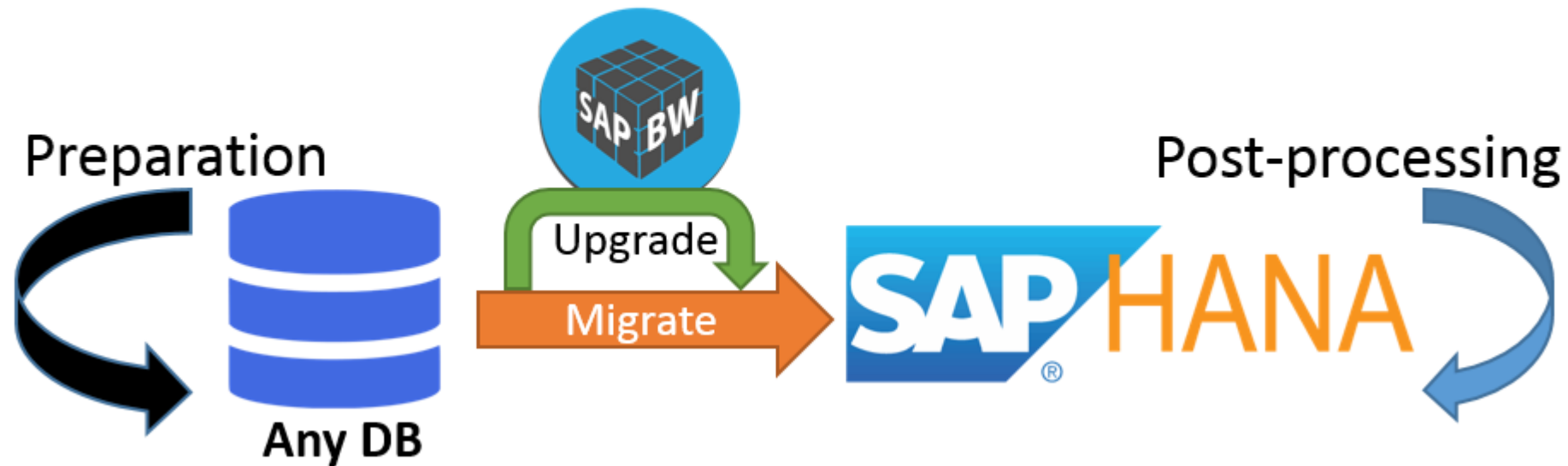


```
5 REPORT Z_SYSTEM_CALL.
6
7 * This statement is only for !!! Internal use in SAP Basis development !!!
8 * Even within SAP Basis, it may only be used in programs within the ABAP+GUI development group.
9 * Process internal : 2 SYSTEM_CALL
10 * Class/Method management : 9 SYSTEM_CALL
11 * Object Manager : 14 SYSTEM_CALL
12 * RTTI calls : 10 SYSTEM_CALL
13 * CHECK calls : 3 SYSTEM_CALL
14 * Total : 38 SYSTEM_CALL
15 *-----*
16 * Process internal
17 SYSTEM-CALL ITAB_DELETE_LIST TABLE itab1 INDEX-LIST itab2.
18 SYSTEM-CALL ITAB_INFO TABLE itab1 OPCODE op.
19
20 * Method management for the new ABAP class library
21 SYSTEM-CALL CREATE CLASS c.
22 SYSTEM-CALL CREATE METHOD m OF CLASS c INCLUDE INTO incl.
23 SYSTEM-CALL QUERY CLASS c.
24 SYSTEM-CALL QUERY METHOD m OF CLASS c INCLUDE INTO incl.
25 SYSTEM-CALL DELETE CLASS c.
```

Migration

DMO (Database migration option)

- Migration steps are simplified
- The source database remains consistent, so a fast fallback is possible
- Use HANA server to optimize downtime
- Rehearse, rehearse, rehearse...



4

Results & Lessons
Learned

Lessons learnt

1. Choose **migration scenario** per system and **prepare accordingly**. Do a proper sizing for HANA. You might consider **data growth**. Involve hardware partner early.
2. Consider **available** migration and optimization tools. Leverage them to ease migration.
3. **Custom code** optimization and tests are the main drivers for project **duration & costs**. Often **prioritization** of efforts is required depending on number of objects to be corrected and/or optimized
4. No big problems found during migration to HANA, however project was **underestimated**.
5. Reporting and Planning Functions: **0! to 100x** faster.
6. Data loading: up to **48x faster, 5x average**.

Lessons learnt

1. **100+ SAP Notes applied** (purely related to HANA migration)
2. **30+ OSS Messages** (purely related to HANA migration)
3. **4 new HANA revisions** applied (3 pre and 1 post go live)
4. Nights without sleep
5. **SAP MAX** – “Migration Planning Workshop” ! Helps understanding complexity/risks
6. **Manage expectations**
 - Expect in avg. little improved reporting performance (in case BWA is in place)
 - Expect some reports can get a **negative performance impact**

Lessons learnt

Long term benefits which can be realized due to the implementation of HANA:

- **Future proof data warehouse solution** – by migrating the entire existing BW solution to HANA you get a data warehouse platform that can leverage future technology and tools, i.e. Predictive Analysis, HANA studio
- **Improving performance of data warehouse** – by utilizing the in-memory calculations
- **Drastically improve reporting performance** – by redesigning data flows and reports gain the true potential that BW on HANA brings

5 Q & A

Atos

Trusted Partner for your Digital Journey