

# High-Efficiency Intralogistics with Connected Forklifts



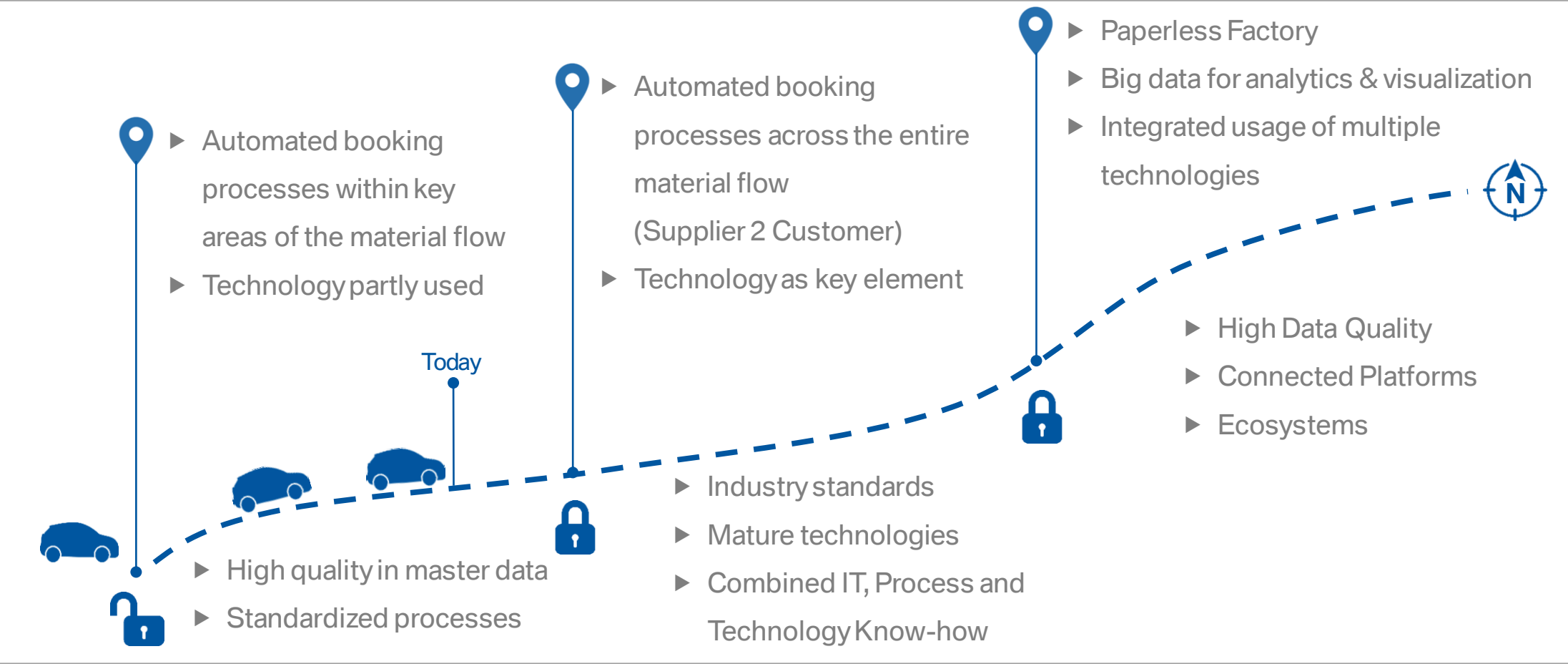
# Connected Forklifts: High-Efficiency Intralogistics

## Customer Pain Points in Intralogistics Processes



# Connected Forklifts: High-Efficiency Intralogistics

## Today's Situation in Logistics focusing on I4.0



# Connected Forklifts: High-Efficiency Intralogistics

## Bosch Connected Logistics: Our Vision for Intralogistics



**We and our partners** provide solutions for **transparent and efficiently controlled value streams** in production plants and warehouses.

- We **trace, control and predict** the **whole internal material flow**
- **Highly utilized mobile assets** ensure **high efficiency**
- **People** are **fully integrated and supported** in their daily work

# Connected Forklifts: High-Efficiency Intralogistics

## Connected Logistics: A Platform for Intralogistics Solutions

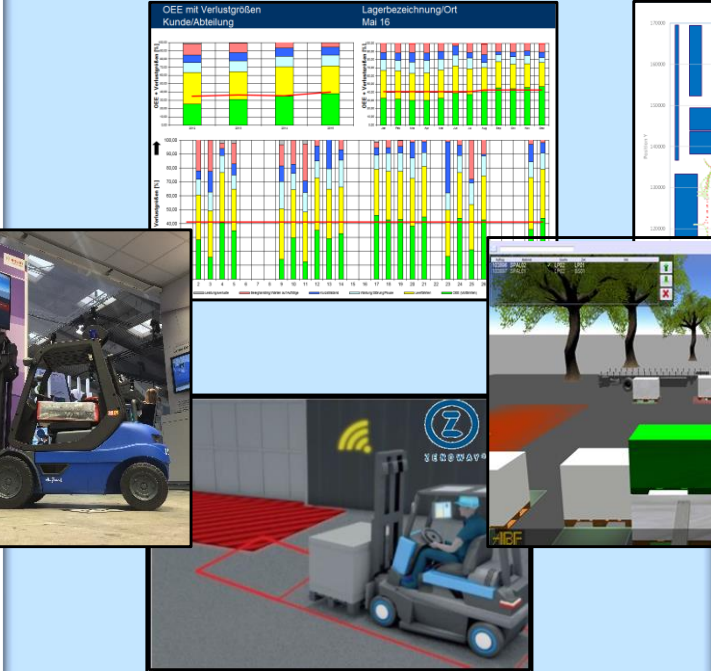
**Transport Management** UI  
Appl.

**Fleet Analytics** UI  
Appl.

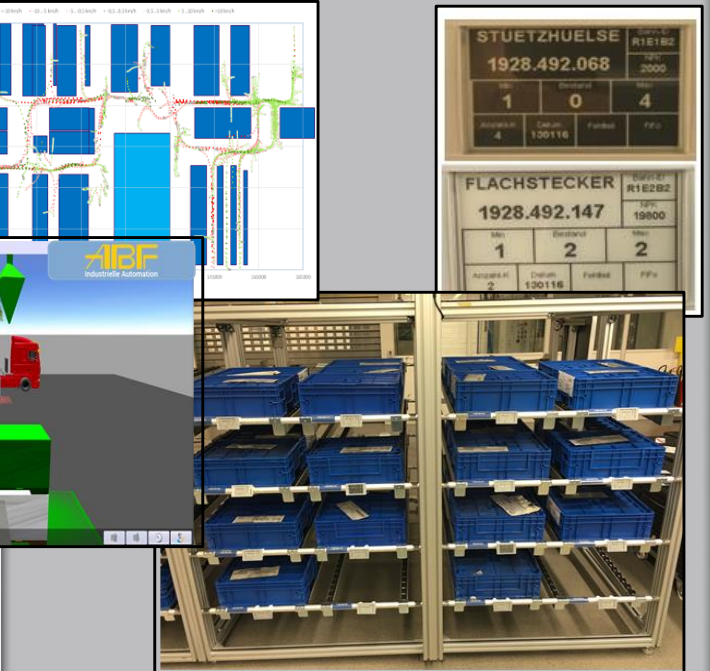
**Stock Management** UI  
Appl.



**Transport optimization of heterogeneous mobile assets**



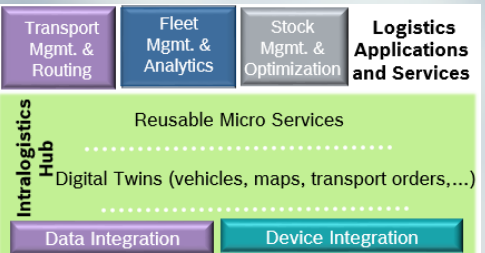
**Fleet analysis and safety features based on sensor data**



**Real-time information about material location**

# Connected Forklifts: High-Efficiency Intralogistics Partnering in IoT Ecosystems

Digitization of Mobile Assets  
Active Safety



... and various  
3rd Party Sensors

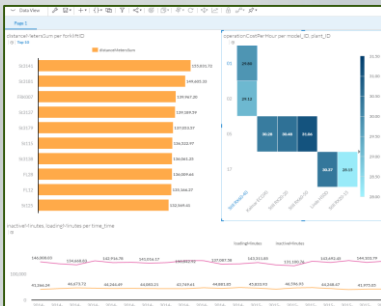
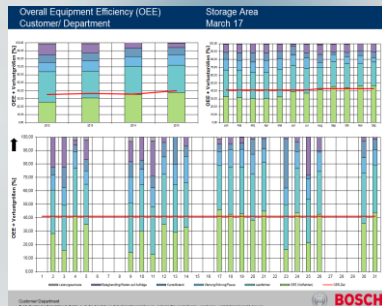


**BOSCH** Intralogistics Hub

Device & Data Integration  
Real Time Monitoring  
Steering & Task Brokerage

**SAP** Vehicle Insights

Analytics & Machine Learning  
Historical Data  
Strategic Planning & Optimization



# Connected Forklifts: High-Efficiency Intralogistics

## IIC Testbed in Bosch Warehouse



- ▶ Optimization in warehouse performance:
  - ▶ scanless logistics
  - ▶ fleet management

- ▶ IIC Testbed „Track and Trace“ - Forklifts
- ▶ Strong partnership between Bosch and SAP

# Bosch Connected Industry

Please visit us: L4-PB2 (4th floor / on the terrace)



Andreas Müller

