



Concur Solution Overview and Integration with SAP S/4HANA

Pia Luebeck, Director T&E Conversions, SAP SE

Armin Friemelt, Integration Expert, Platinum Engineering Concur, SAP SE

September 2017

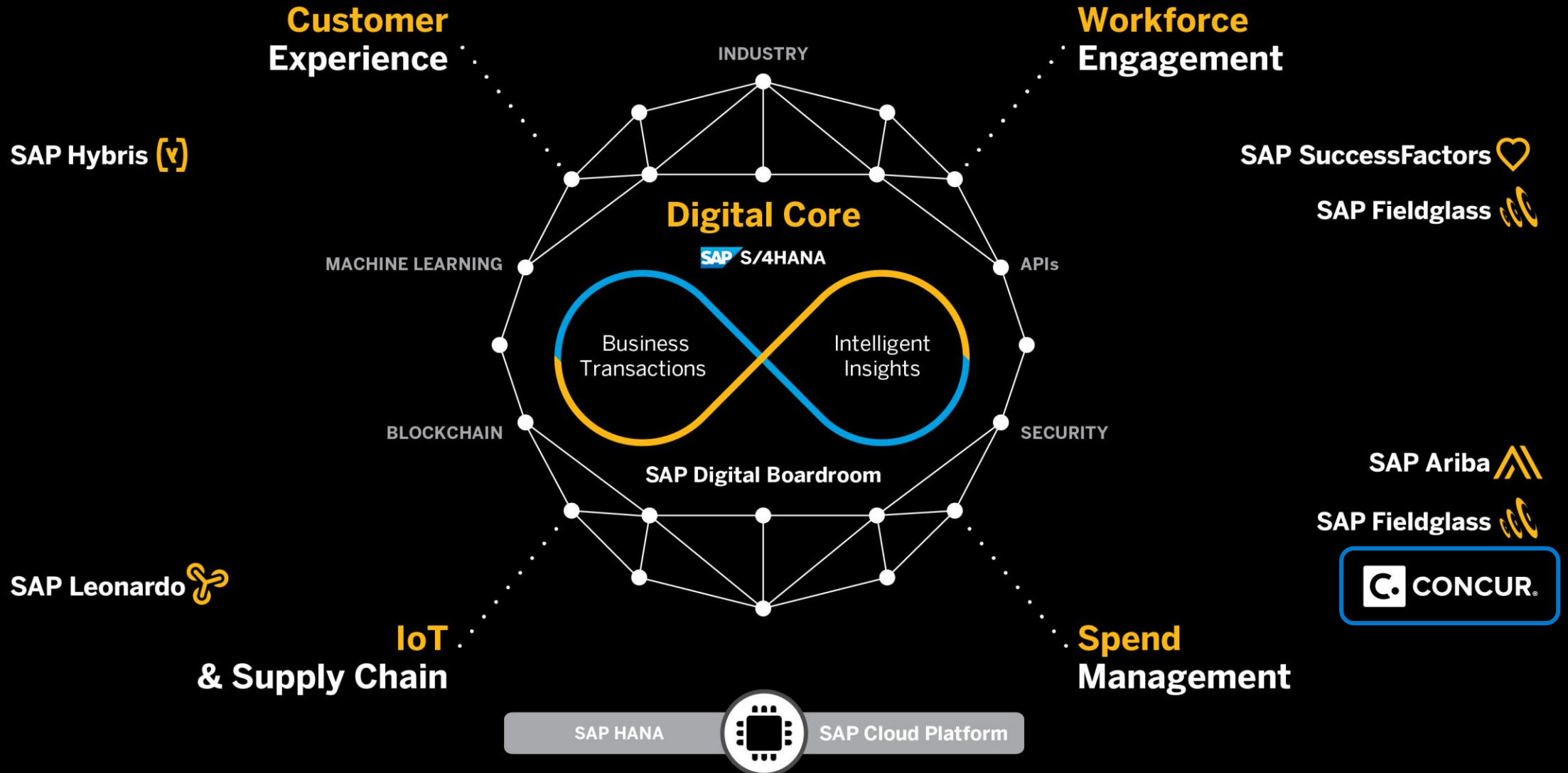
CUSTOMER

Legal disclaimer

The information in this presentation is confidential and proprietary to SAP and may not be disclosed without the permission of SAP. This presentation is not subject to your license agreement or any other service or subscription agreement with SAP. SAP has no obligation to pursue any course of business outlined in this document or any related presentation, or to develop or release any functionality mentioned therein. This document, or any related presentation and SAP's strategy and possible future developments, products and or platforms directions and functionality are all subject to change and may be changed by SAP at any time for any reason without notice. The information in this document is not a commitment, promise, or legal obligation to deliver any material, code, or functionality. This document is provided without a warranty of any kind, either express or implied, including but not limited to, the implied warranties of merchantability, fitness for a particular purpose, or non-infringement. This document is for informational purposes and may not be incorporated into a contract. SAP assumes no responsibility for errors or omissions in this document, except if such damages were caused by SAP's willful misconduct or gross negligence.

All forward-looking statements are subject to various risks and uncertainties that could cause actual results to differ materially from expectations. Readers are cautioned not to place undue reliance on these forward-looking statements, which speak only as of their dates, and they should not be relied upon in making purchasing decisions.

The SAP Digital Business Framework



Better together



+



CONCUR®

Unify finance and your digital core with travel, expense, and invoice data for instant, real-time, and actionable insights.

Expand your digital transformation by shining light on invisible spending with cloud-based solutions.

Accelerate system performance with best in class applications that are seamlessly in sync.

Fewer industries change as quickly as the travel industry



Travel and expense data changes constantly – having it in the cloud and connected in near real-time brings unmatched value and control to your business.



Employees now control company spending with each and every card transaction making your business more vulnerable to compliance issues.



Global tax laws, as well as compliance regulations change quickly – cloud based solutions make being compliant a reality.

Concur customers see and save more with integrated travel, expense, and invoice management solutions

PepsiCo saved \$40 million by combining Travel and Expense together and guiding employees to make smarter decisions.

General Mills was able to save \$1.4 million in costs within three years of implementing Concur solutions.

Within six months of implementing Concur Expense across 19 countries, **Twitter** saw the cost of running an expense report decrease by more than 72 percent, saving them more than seven figures annually.



20+

Years as
industry leader

6,800

employees
worldwide

Offices in North
America,
Europe and
Asia Pacific

70%

Of Fortune
500 use
Concur

150

Countries
with client
representation

\$87

BILLION
in expenses
processed in
2016

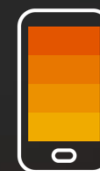
In a **typical day**



730k expense receipts uploaded



191k trips booked



700k mobile logins



\$187M invoices processed

Concur takes you beyond automation to a completely connected spend management solution that grows along with your business



Expertise you won't outgrow



Industry-leading innovation for your business



Open ecosystem expands your view



Expertise you won't outgrow



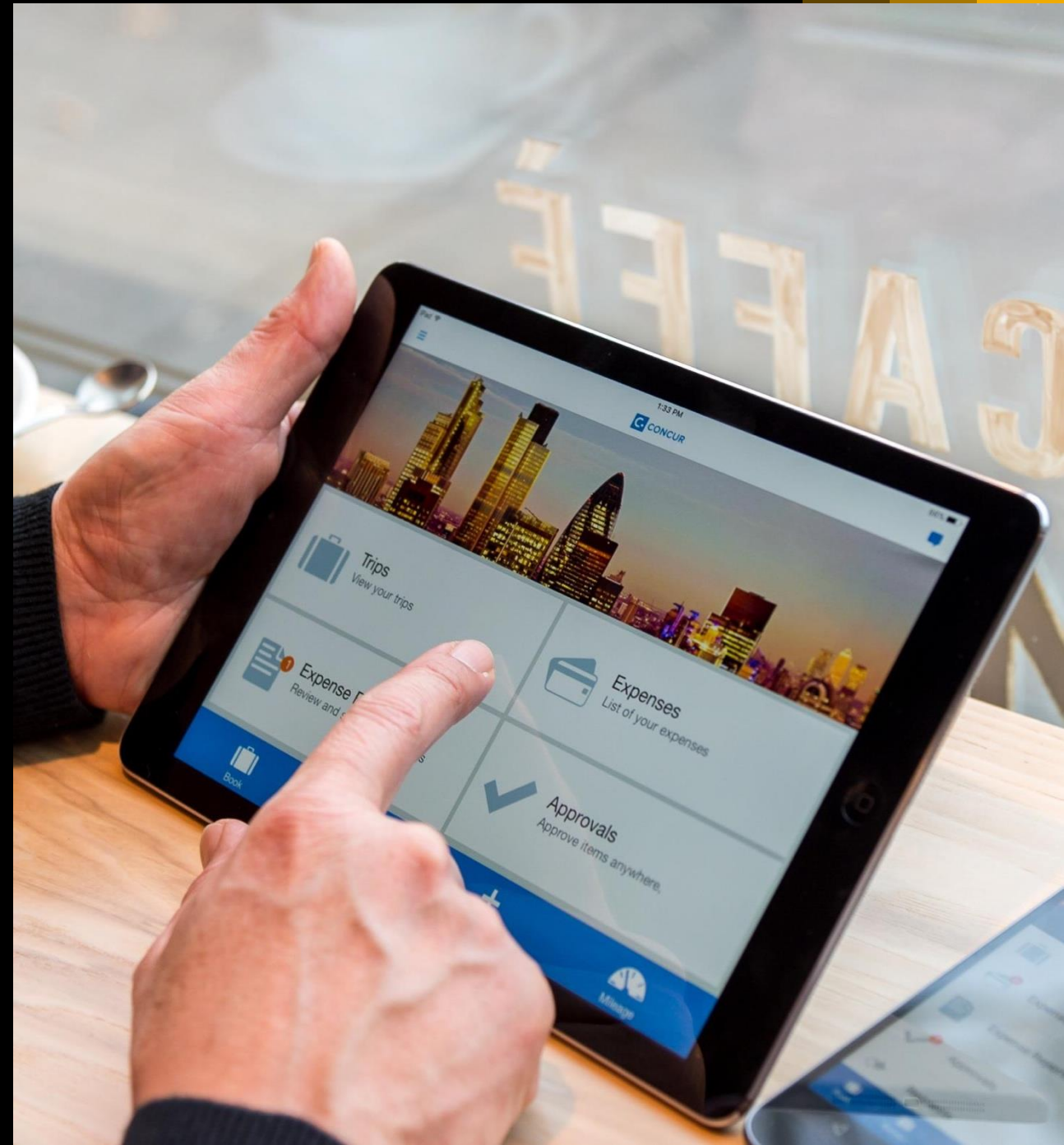
- Concur is where you are, and where you are going
- Cloud solutions ensure you are always a step ahead of change, around the world
- Spend management solutions tailored to what you need, today and in the future



Industry-leading innovation that benefits you



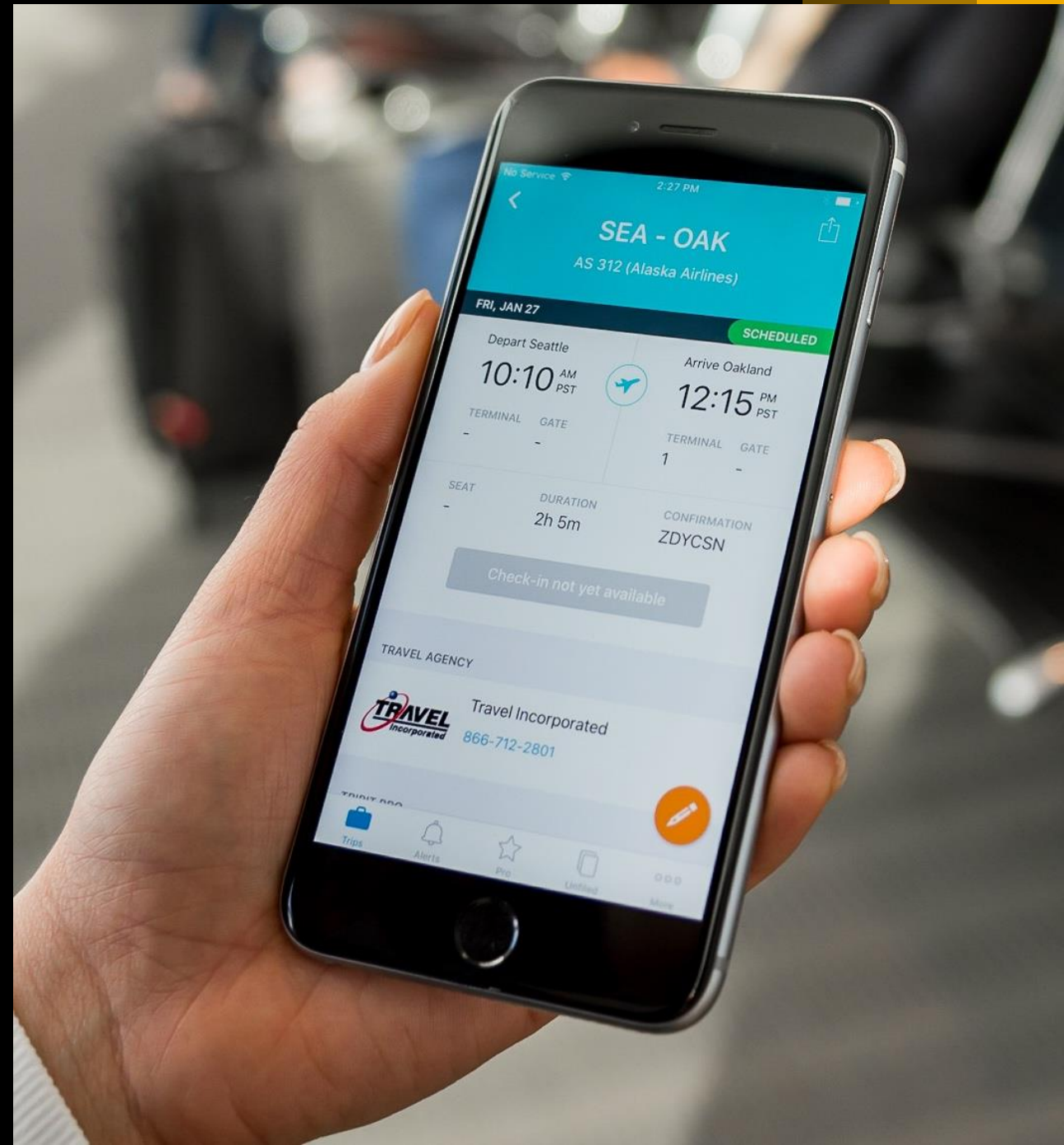
- Success starts—but doesn't stop—with automation
- Connect every piece of data with every system
- TripLink gives you insight in to invisible spend today and gives employees flexibility
- Delighting every user increases productivity, adapts to new styles of work, and makes compliance the path of least resistance



Open ecosystem expands your view



- Easy connections to our partners delivers powerful capabilities with speed and flexibility
- Meet your employees where they work
- Connect to the apps your employees love



System Requirements

The new SAP Integration with Concur Solutions (SAP ICS) supports the following SAP applications:

SAP ERP

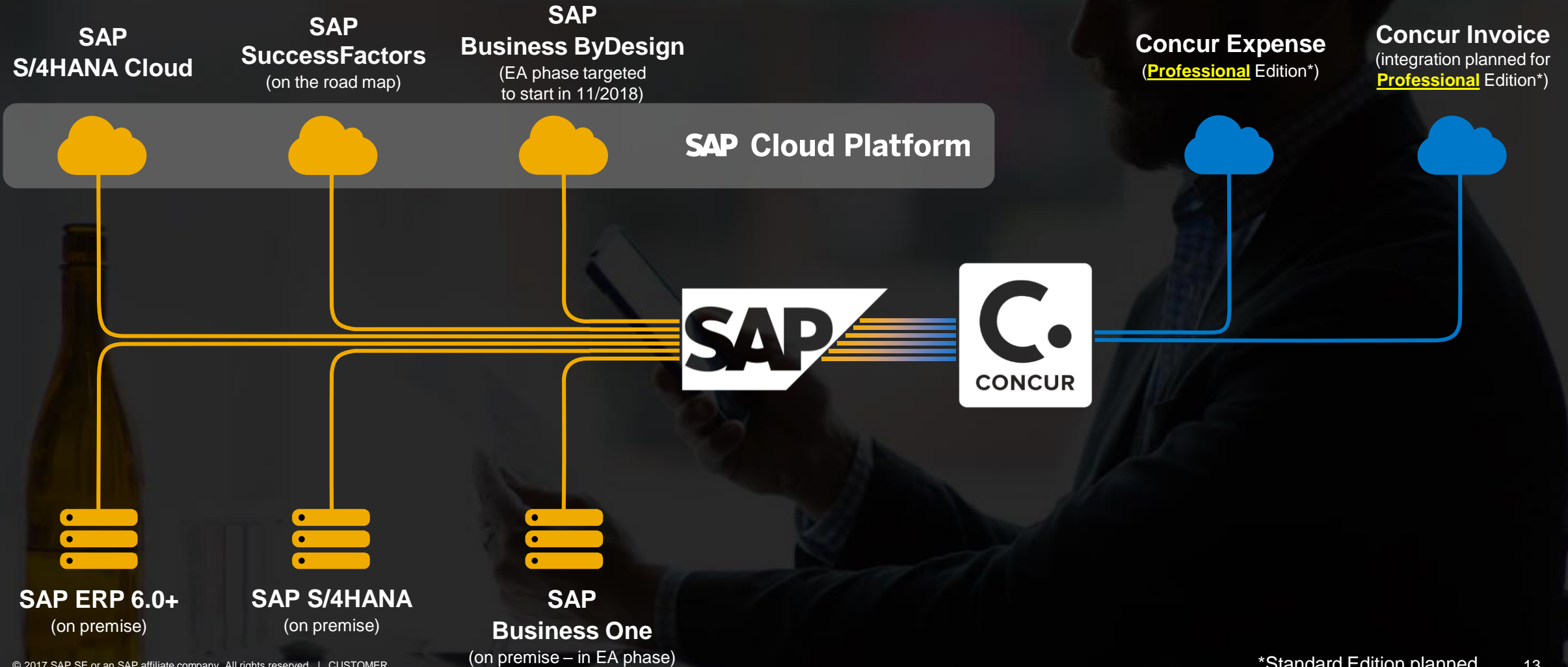
SAP ECC 600 SP18 and beyond
and all available Enhancement
Packs with corresponding
support package

SAP S/4HANA

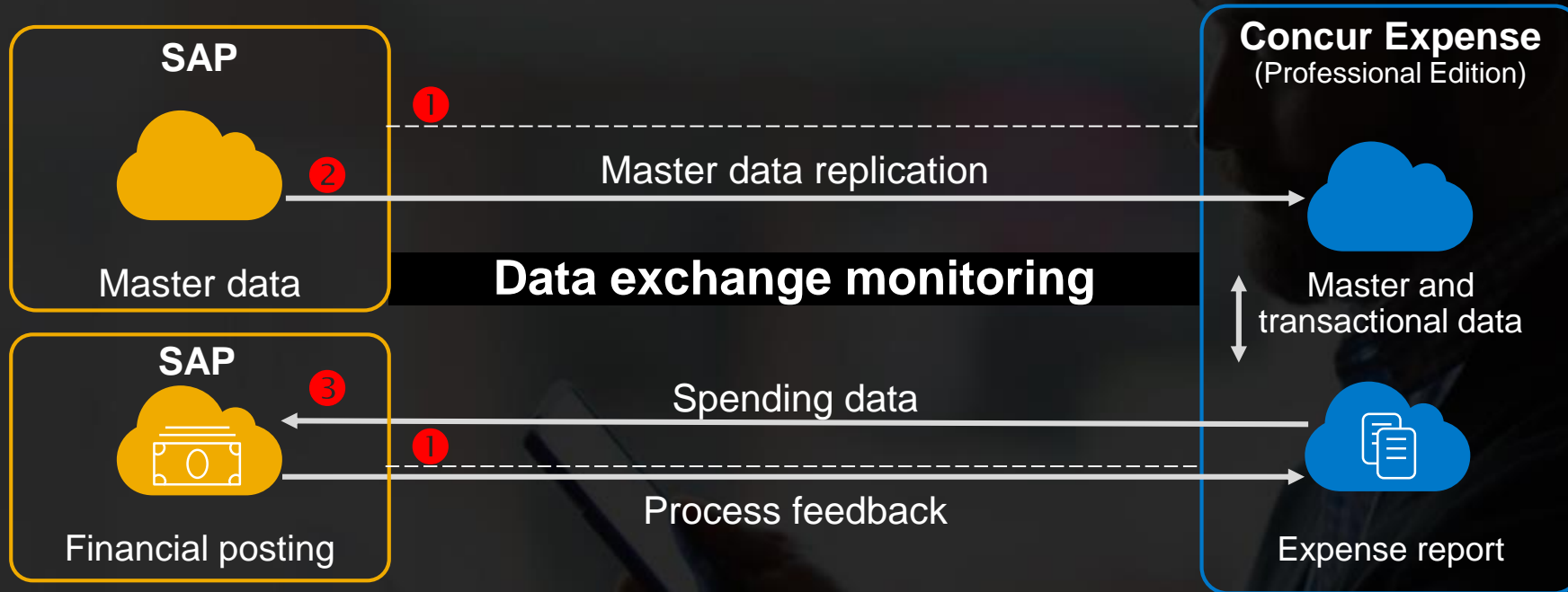
Version 1511 and beyond

SAP S/4HANA Cloud Edition

Leverage SAP systems with Concur solutions native integration to better control your finances



How to Set Up the SAP integration with Concur Expense



Key SAP ICS messaging

Eliminate manual processes—including file uploads and downloads.

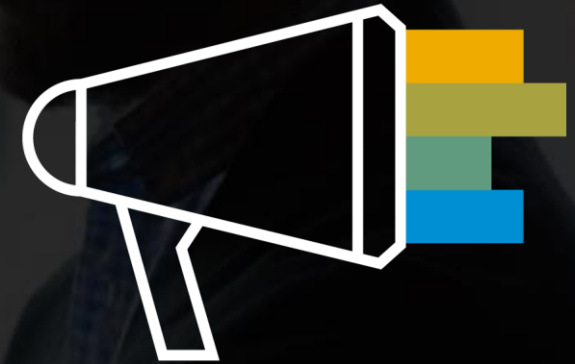
Minimize risk of posting errors by automation—keeping master data in both systems in sync.

Simple integration process monitoring helps you quickly and efficiently identify and correct financial posting issues.

Direct integration with SAP ERP and SAP S/4HANA financial systems creates accurate data integrations for faster payments.

Remove the need for connectors and middleware to reduce system complexity.

Flexible mapping and conversion to support customer-specific integration use cases.



Key features and benefits: Talking points

Features



Direct integration with SAP ERP or SAP S/4HANA financial solutions.



Data synchronization that automates updates from the SAP ERP application or SAP S/4HANA to Concur solutions.



Intuitive, integrated process monitoring for quick and efficient identification and correction of financial posting issues.



Flexible mapping and conversion to support specific integration use cases.

Benefits



End-to-end visibility of financial data in near-real time.



Reduced complexity and safer data synchronization.



Streamlined implementation, reduced maintenance, lower costs, and a simplified system landscape.

A photograph of a large commercial airplane at an airport gate. The aircraft is white with yellow accents on the engines and is positioned on a tarmac. A long, modern jet bridge with a glass and metal structure extends from the terminal building to the aircraft. The sky is clear and blue. A yellow semi-transparent banner is overlaid across the middle of the image, containing the word "Communication" in white text.

Communication

Communication

All communications are triggered by your ERP system!



No need to open inbound communication in ERP



No need to use Middleware – but of course it is supported

Master Data Transfer



Master Data Transfer



Be smart!

Transfer as often as possible!

But transfer as little as necessary!

And transfer in the format you need!

What do we transfer?

Employees

Basic employee
master data

Cost
Centers

Internal
Orders

WBS
Elements

Networks

Network
Activities

Sales
Orders



Financial Posting

Financial Posting

ACCOUNTING



Communication is key!

Let the communication be more like a **bidirectional** conversation not like a one-way file transfer!

How to process expense reports and cash advances?

Schedule

A periodic job in SAP picks up the documents from Concur

Post

In SAP the documents will be processed and the result will be send to Concur

Process errors

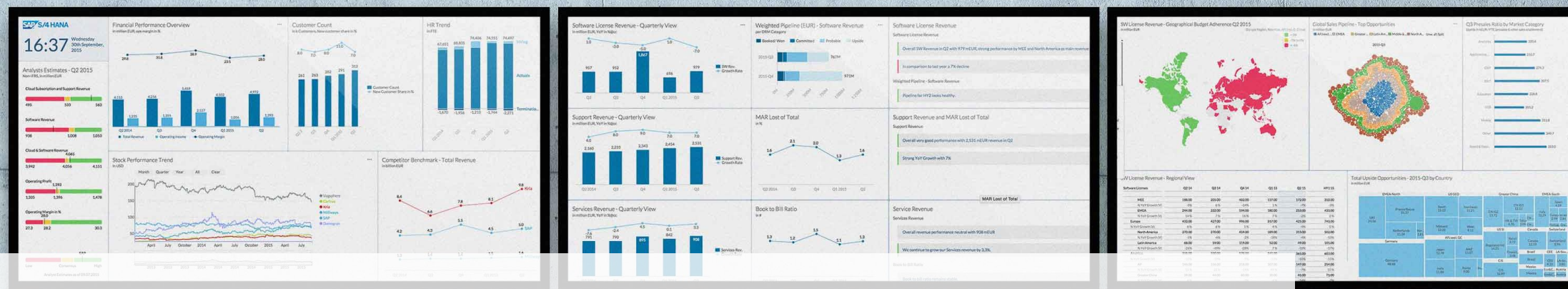
In Concur the errors can be checked and corrected

Repost

After correction the document is ready to be picked up again



Monitoring



Monitoring

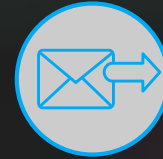


Posting issues

- ▶ Expense report data will be received in ERP but cannot be posted in SAP FI



**Monitoring in
Concur**



Communication issues

- ▶ This monitoring shows if data could be successfully sent to and received from Concur



**Monitoring in
SAP ERP**

A nighttime photograph of the Toronto skyline. The CN Tower is the central focus, illuminated with red lights. To its left is the Rogers Centre, which has a glowing purple dome. The surrounding city is filled with lit-up skyscrapers. The sky is a mix of orange and blue, suggesting dusk or dawn. A semi-transparent white banner is placed across the middle of the image.

Coming Soon...

Integration Road Map – Overview

Recent Innovations

- Simple integration setup wizard
- End-to-end financial integration, including:
 - Master data replication to Concur Expense & Invoice
 - Create financial posting for expense reports, cash advances, payment requests including tax handling and customization and extensibility options
 - Multiple ways to reimburse expenses: credit cards, vendor payment in SAP and Concur Expense Pay
- Process monitoring, feedback to Concur and ability to reopen expense reports when FI posting fails
- Direct and indirect communication
- Supported SAP solutions:
 - SAP ERP (incl. Simplified Finance)
 - SAP S/4HANA (Cloud)

Planned Innovations

- Payment of Expense Reports with HCM Payroll
- Support of Concur Expense Standard Edition
- SAP Funds and Grants Management
 - FI-Postings with FM/GM Objects
 - Transfer of FM/GM cost objects to Concur
- Enhanced Employee Master Data Replication
- Support of other SAP Solutions:
 - SAP Business One
 - SAP Business ByDesign

Future Direction

- Transfer of income tax relevant information to Payroll
- Funds/Grants Management: automatic obligation creation
- Reopening of processed expense reports (Delta Handling)
- Integration of non-SAP-ERP-Systeme
- Support of other SAP Solutions:
 - SAP SuccessFactors Employee Central

Features per system

	ECC	S/4HANA	S/4HANA Cloud	Business One	Business ByDesign	Employee Central
Employee Replication	✓	✓	✗	⌚	⌚	⌚
Cost Object Repl. (may differ per type of SAP system)	✓	✓	✓	⌚	⌚	✗
Financial Posting & Reimbursement	✓	✓	✓	⌚	⌚	✗
Payroll Integration	⌚	⌚	✗	✗	✗	⌚ EC Payroll

Functional scope may differ between these systems

Thank you

Interested in regular updates on the integration scenarios?

- Email „Subscribe“ to sapconcurintegration@sap.com and please include your business signature in the message body.

Do you have questions about how to design the future of your Travel & Expense solution?

- Visit our [landing page](#) dedicated to SAP Travel Management On Premise customer

Contact information:

- Pia Luebeck, Director T&E Conversions, SAP SE
pia.luebeck@sap.com
- Armin Friemelt, Integration Expert, Platinum Engineering Concur, SAP SE
armin.friemelt@sap.com
- Or learn more at [SAP.com](https://www.sap.com)





© 2017 SAP SE or an SAP affiliate company. All rights reserved.

No part of this publication may be reproduced or transmitted in any form or for any purpose without the express permission of SAP SE or an SAP affiliate company.

The information contained herein may be changed without prior notice. Some software products marketed by SAP SE and its distributors contain proprietary software components of other software vendors. National product specifications may vary.

These materials are provided by SAP SE or an SAP affiliate company for informational purposes only, without representation or warranty of any kind, and SAP or its affiliated companies shall not be liable for errors or omissions with respect to the materials. The only warranties for SAP or SAP affiliate company products and services are those that are set forth in the express warranty statements accompanying such products and services, if any. Nothing herein should be construed as constituting an additional warranty.

In particular, SAP SE or its affiliated companies have no obligation to pursue any course of business outlined in this document or any related presentation, or to develop or release any functionality mentioned therein. This document, or any related presentation, and SAP SE's or its affiliated companies' strategy and possible future developments, products, and/or platform directions and functionality are all subject to change and may be changed by SAP SE or its affiliated companies at any time for any reason without notice. The information in this document is not a commitment, promise, or legal obligation to deliver any material, code, or functionality. All forward-looking statements are subject to various risks and uncertainties that could cause actual results to differ materially from expectations. Readers are cautioned not to place undue reliance on these forward-looking statements, and they should not be relied upon in making purchasing decisions.

SAP and other SAP products and services mentioned herein as well as their respective logos are trademarks or registered trademarks of SAP SE (or an SAP affiliate company) in Germany and other countries. All other product and service names mentioned are the trademarks of their respective companies.

See <http://global.sap.com/corporate-en/legal/copyright/index.epx> for additional trademark information and notices.