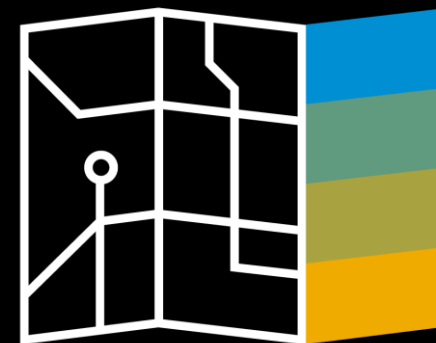




Collaborate and Maximize Your Success with **SAP Enterprise Support Value Maps**

SAP Digital Business Services
@Knowledge for SAP user groups
May, 2018
PUBLIC



Legal disclaimer

The information in this presentation is confidential and proprietary to SAP and may not be disclosed without the permission of SAP. This presentation is not subject to your license agreement or any other service or subscription agreement with SAP. SAP has no obligation to pursue any course of business outlined in this document or any related presentation, or to develop or release any functionality mentioned therein. This document, or any related presentation and SAP's strategy and possible future developments, products and or platforms directions and functionality are all subject to change and may be changed by SAP at any time for any reason without notice. The information in this document is not a commitment, promise or legal obligation to deliver any material, code or functionality. This document is provided without a warranty of any kind, either express or implied, including but not limited to, the implied warranties of merchantability, fitness for a particular purpose, or non-infringement. This document is for informational purposes and may not be incorporated into a contract. SAP assumes no responsibility for errors or omissions in this document, except if such damages were caused by SAP's willful misconduct or gross negligence.

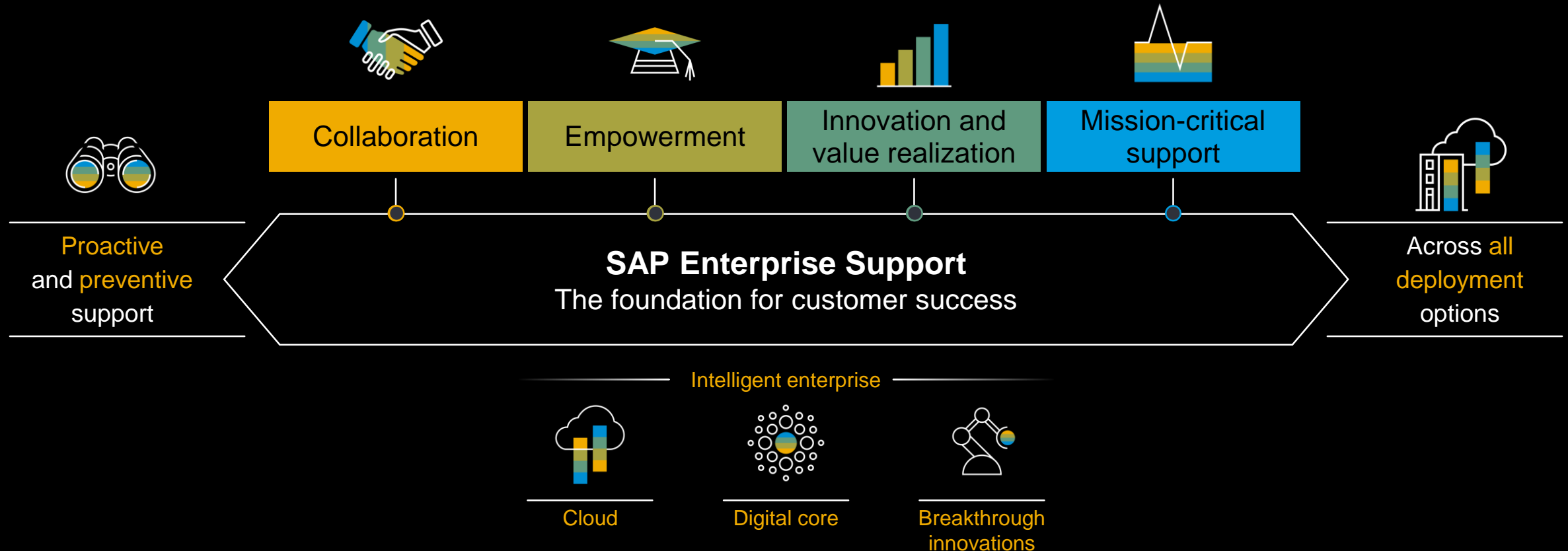
All forward-looking statements are subject to various risks and uncertainties that could cause actual results to differ materially from expectations. Readers are cautioned not to place undue reliance on these forward-looking statements, which speak only as of their dates, and they should not be relied upon in making purchasing decisions.

AGENDA

- SAP Enterprise Support & SAP Enterprise Support Value Maps
 - Fernanda S. Formento – Value Maps Program Lead
- Lifecycle Management Value Map
 - Christoph Bechtloff– Global Topic Owner
- Digital Innovation Value Map
 - Olga TREGUB– Global Topic Owner
- Q&A

SAP Enterprise Support – The foundation for customer success

The choice for the Intelligent Enterprise



Enablement for digital transformation

SAP Enterprise Support Academy – Benefit from expert-guidance and high impact knowledge transfer services that enable you to innovate and be successful with SAP solutions.



Knowledge transfer
on digital transformation, integration,
and system operations



On-demand learning experience
by combining self-paced and expert-
led offerings, available on a 24x7
platform



High-quality vendor knowledge
from SAP Support experts helps to
close the digital skills gap of key
users, IT and line-of-business experts

Available Formats

70+
Best
Practices

280+
Tutorials &
Videos

15
Guided Self-
Services

17+
Continuous
Quality Checks &
Improvement
Services

50+
Expert-Guided
Implementations

740+
Meet-the-Expert
Sessions

190+
Accelerated
Innovation
Enablement



SAP Enterprise Support Value Maps



Your fast lane to support expertise

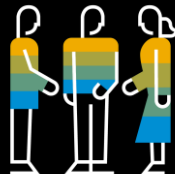
SAP Enterprise Support Value Maps – Quickly identify the relevant SAP Enterprise Support services, tools and offerings for your business needs. In addition, leverage the in-depth knowledge of our **support advisory team** for personal guidance based on 45+years of close customer engagements.



Guided approach
to reach your objective



Social collaboration
to connect directly with
SAP experts and peers



Expert access
to obtain guidance from
SAP support experts



Empowerment
to build the knowledge
and skills you need

Available Value Maps

>> [Sign up](#)

- | | | | | | | | | | |
|------------------------|-------------------|--------------------|--------------------|-----------------------|-------------------------|----------|------------------------------|------------------------|----------------------|
| SAP S/4HANA On Premise | SAP S/4HANA Cloud | Digital Innovation | SAP SuccessFactors | SAP Jam Collaboration | SAP Analytics Solutions | Security | Business Process Improvement | Data Volume Management | Lifecycle Management |
|------------------------|-------------------|--------------------|--------------------|-----------------------|-------------------------|----------|------------------------------|------------------------|----------------------|

Social business collaboration with SAP Jam



Customer

- Direct access to SAP Support experts
- Discuss and exchange ideas with other customers across different geographies
- Fast SAP best practice responses
- Exclusive access for SAP Enterprise Support customers

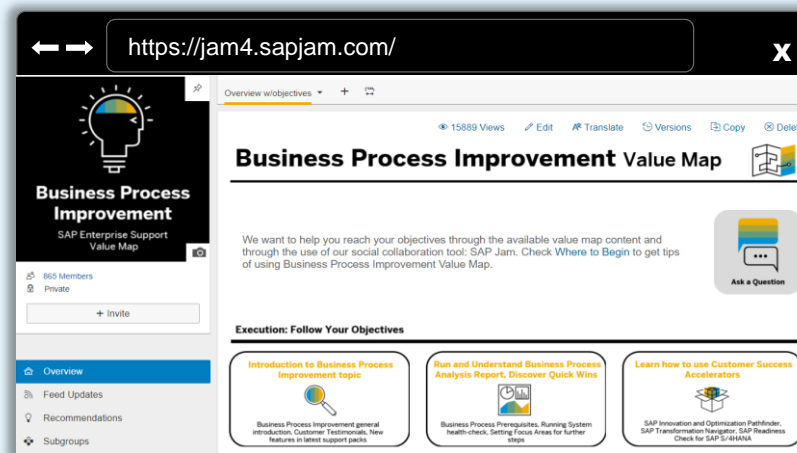
SAP Jam



SAP

- Share expertise and provide guidance
- Get direct customer feedback
- Scalable social support

On-demand expertise through a cloud-based social collaboration platform



[Learn more about SAP Jam >](#)

Benefits of SAP ES Value Maps



Access to peers and SAP experts

Run your software at the speed of your business

Embrace innovation adoption & digital transformation

Realize the Intelligent Enterprise

Maximize the value of your SAP software

Boost employee skill level

Reduce training expenditures

Three simple steps to register

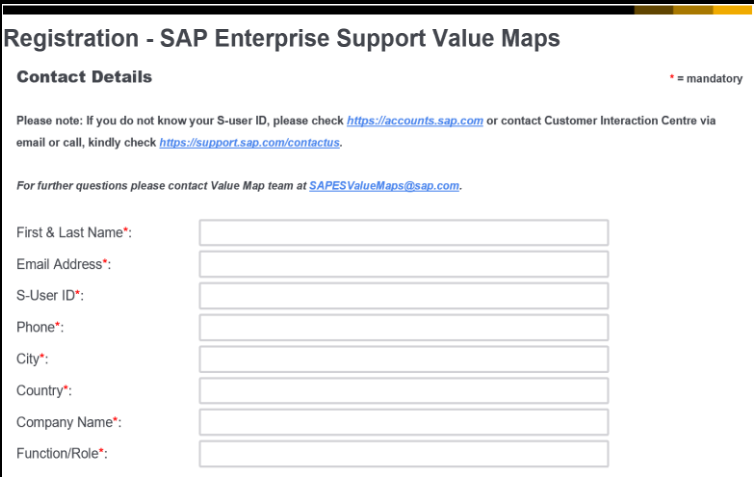
<https://support.sap.com/valuemaps>

Step 1



Click on ‘[Sign Up](#)’

Step 2



Provide your ‘Contact Details’

Step 3



Choose ‘Value Map topic’ and
‘objectives’.
Click on ‘Next’ & ‘Finish’

Lifecycle Management Value Map

Demo Session

Christoph Bechtloff - Global Topic Owner



**Lifecycle
Management**

SAP Enterprise Support
Value Map

Digital Innovation Value Map Demo Session

Olga TREGUB- Global Topic Owner



Digital Innovation

SAP Enterprise Support
Value Map

Q&A





“We are always focused on innovation and business. For this reason we followed the SAP Enterprise Support value map approach. [...].”

Silvia Marziale, Human Resources Process Information Systems Manager, Piaggio & C. SpA*

*) Learn more: [Piaggio Group: Better-Performing Software with SAP Enterprise Support Value Maps](#)

SAP Enterprise Support Value Maps

TURN INFORMATION INTO IMPACT

<http://support.sap.com/valuemaps>

Thank you.

Register to SAP Enterprise Support Value Maps [here](#).

Contact information:

For further details, please contact your SAP Enterprise Support Advisor or send an e-mail to:

sapesvaluemaps@sap.com

Follow all of SAP



www.sap.com/contactsap

© 2018 SAP SE or an SAP affiliate company. All rights reserved.

No part of this publication may be reproduced or transmitted in any form or for any purpose without the express permission of SAP SE or an SAP affiliate company.

The information contained herein may be changed without prior notice. Some software products marketed by SAP SE and its distributors contain proprietary software components of other software vendors. National product specifications may vary.

These materials are provided by SAP SE or an SAP affiliate company for informational purposes only, without representation or warranty of any kind, and SAP or its affiliated companies shall not be liable for errors or omissions with respect to the materials. The only warranties for SAP or SAP affiliate company products and services are those that are set forth in the express warranty statements accompanying such products and services, if any. Nothing herein should be construed as constituting an additional warranty.

In particular, SAP SE or its affiliated companies have no obligation to pursue any course of business outlined in this document or any related presentation, or to develop or release any functionality mentioned therein. This document, or any related presentation, and SAP SE's or its affiliated companies' strategy and possible future developments, products, and/or platforms, directions, and functionality are all subject to change and may be changed by SAP SE or its affiliated companies at any time for any reason without notice. The information in this document is not a commitment, promise, or legal obligation to deliver any material, code, or functionality. All forward-looking statements are subject to various risks and uncertainties that could cause actual results to differ materially from expectations. Readers are cautioned not to place undue reliance on these forward-looking statements, and they should not be relied upon in making purchasing decisions.

SAP and other SAP products and services mentioned herein as well as their respective logos are trademarks or registered trademarks of SAP SE (or an SAP affiliate company) in Germany and other countries. All other product and service names mentioned are the trademarks of their respective companies.

See www.sap.com/corporate-en/legal/copyright/index.epx for additional trademark information and notices.