



# Positioning SAP BW/4HANA and SAP S/4HANA

Karsten Ruf, Jürgen Butsmann, SAP SE  
April 24, 2019

PUBLIC

# Legal disclaimer

The information in this presentation is confidential and proprietary to SAP and may not be disclosed without the permission of SAP. This presentation is not subject to your license agreement or any other service or subscription agreement with SAP. SAP has no obligation to pursue any course of business outlined in this document or any related presentation, or to develop or release any functionality mentioned therein. This document, or any related presentation and SAP's strategy and possible future developments, products and or platforms directions and functionality are all subject to change and may be changed by SAP at any time for any reason without notice. The information in this document is not a commitment, promise or legal obligation to deliver any material, code or functionality. This document is provided without a warranty of any kind, either express or implied, including but not limited to, the implied warranties of merchantability, fitness for a particular purpose, or non-infringement. This document is for informational purposes and may not be incorporated into a contract. SAP assumes no responsibility for errors or omissions in this document, except if such damages were caused by SAP's willful misconduct or gross negligence.

All forward-looking statements are subject to various risks and uncertainties that could cause actual results to differ materially from expectations. Readers are cautioned not to place undue reliance on these forward-looking statements, which speak only as of their dates, and they should not be relied upon in making purchasing decisions.

# Agenda

Overview of Positioning and Architecture of SAP Analytics and SAP S/4HANA

Integration of SAP S/4HANA with SAP BW/4HANA

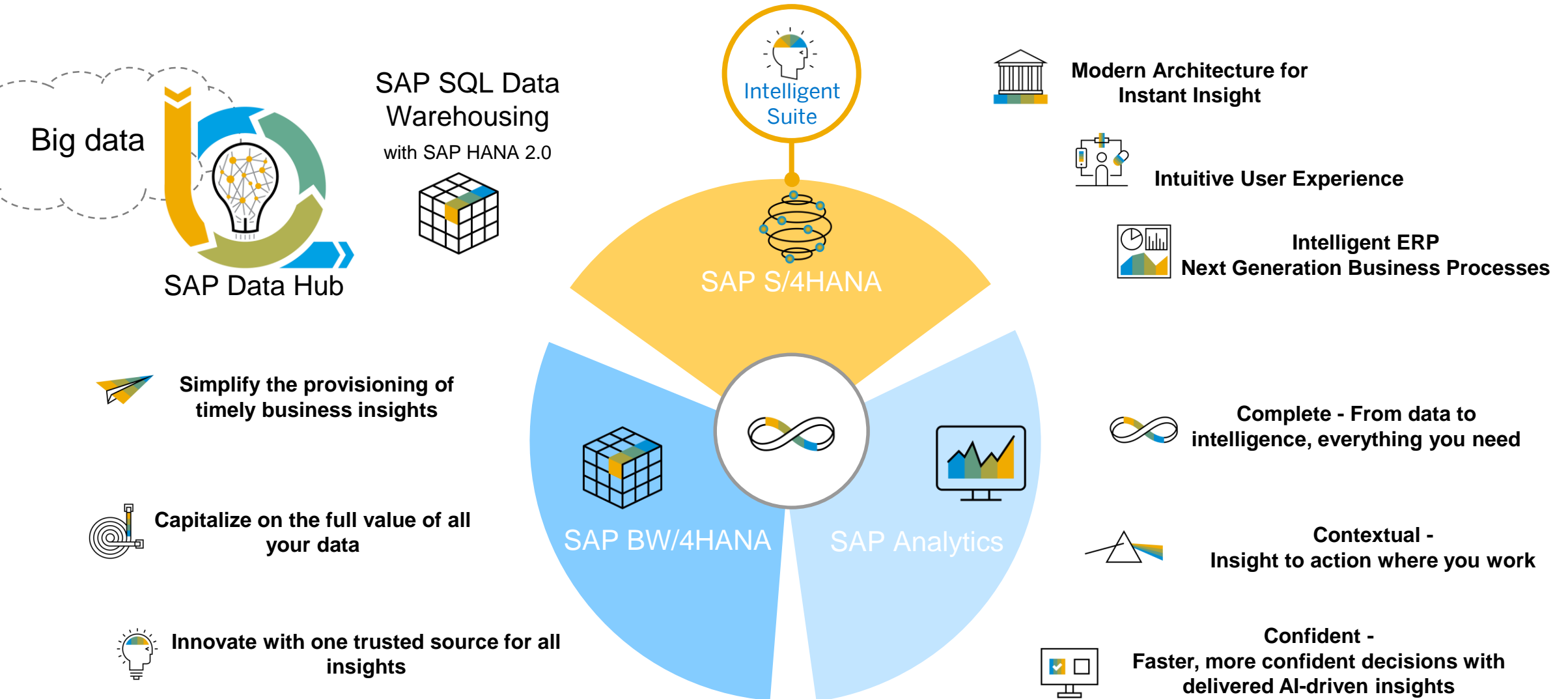
What to consider on your route to Analytics with SAP S/4HANA?

Summary

# **Overview of Positioning and Architecture of SAP Analytics and SAP S/4HANA**

# Analytics in the context of SAP S/4HANA

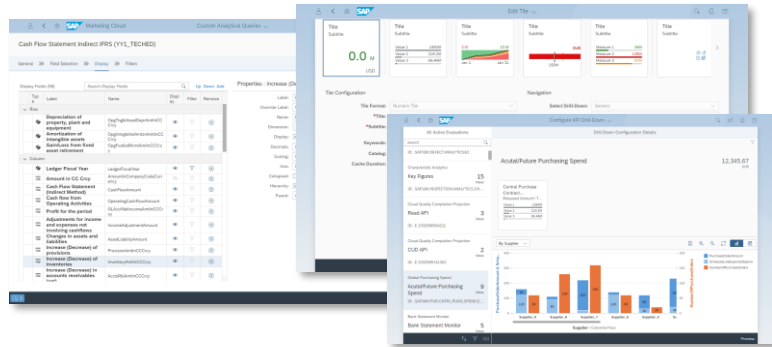
## The complete portfolio



# SAP S/4HANA Digital Core - Examples



## Modern Architecture for Instant Insight

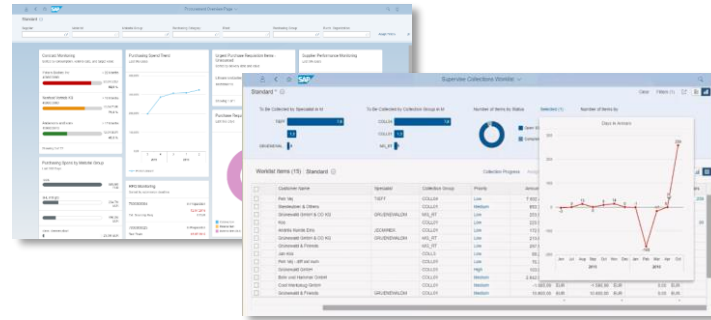


### Easy modeling on simple data models

- Real-time data availability
- Easy drill down
- Best possible performance
- Custom data model extensions (in SAP Fiori)



## Intuitive User Experience

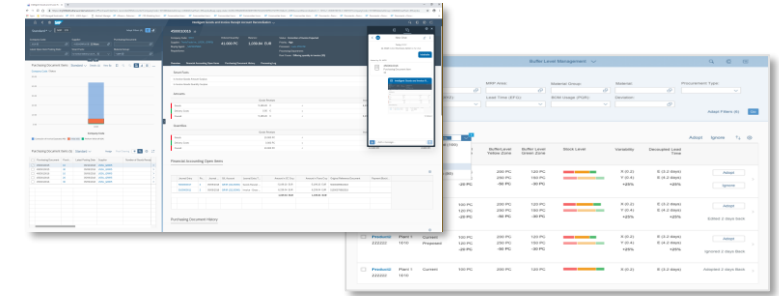


### Enablement of fact-driven process handling

- Combined screens with transactional and analytical information
- Proper prioritization in transactional process steps
- Decision support where it is needed (inside the transactional screen)



## Intelligent ERP Next Generation Business Processes



### Integrate intelligent technologies in processes

- Integration of Predictive and ML data inside analytical data models
- Embedded decision support
- Allow process automation where needed

# SAP Analytics Cloud – Make Intelligent Decisions



## Complete - from data to intelligence

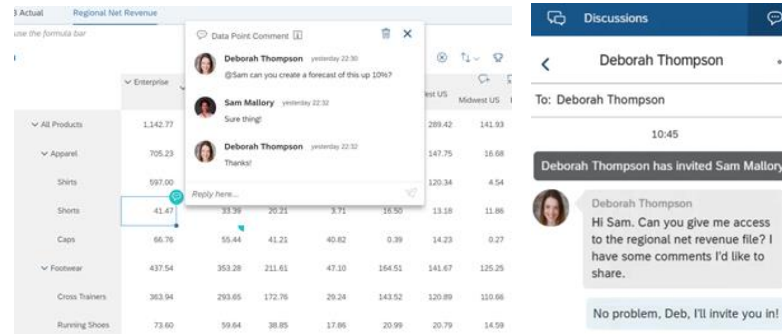


### All in one platform built for SaaS

- Get everything you need from data to decisions
- Analyze, plan, and predict all in one place
- Scale to meet the needs of diverse users and all types of decisions (strategic, operational, and tactical)



## Contextual insight to action

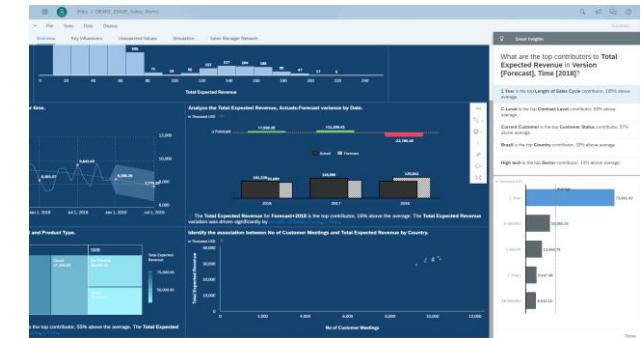


### Planning, analysis, and execution in one UX

- Plan, analyze, and collaborate in one UX/system for instant insight to action
- Increase engagement, accountability, and accuracy with collaboration embedded in context
- Access to on-prem data & apps without having to replicate in the cloud



## Confident decisions with delivered AI-driven insights



### Augmented analytics for business users

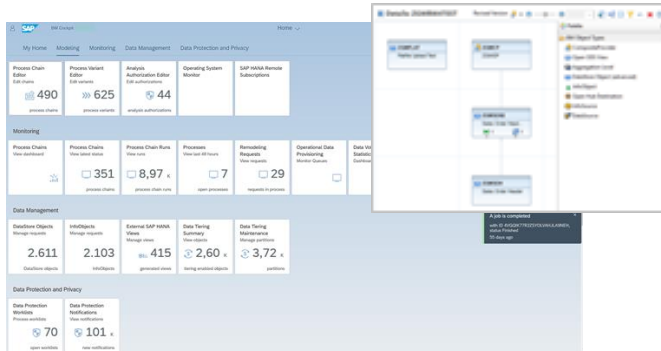
- Augment manual insights with embedded intelligence that explains results
- Ask questions in natural language to get the answers you seek
- Detect causes and take the next best action using automated ML
- Predict potential outcomes with the push of a button



# SAP BW/4HANA - the Guiding Principles



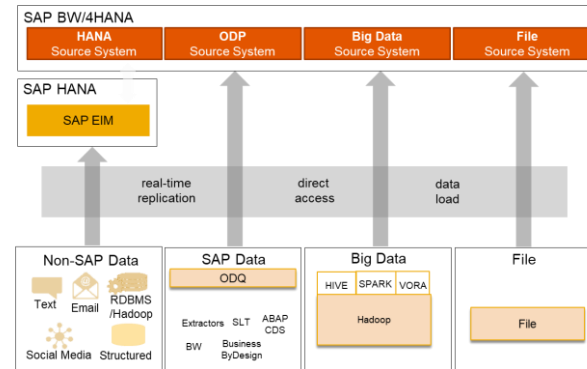
## Simplify the provisioning of timely business insights



Impactful reduction of modeling and source objects; choice of field- or InfoObject-based modeling, no data replication between layers needed  
Data tiering for allocating best storage for hot, warm, cold data by partition  
Data processing pushed to SAP HANA from the application server  
Deploy on HEC, AWS, Azure, and GCP



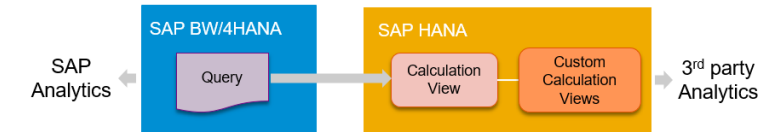
## Capitalize on the full value of all your data



Leverages SAP HANA EIM to provide new data provisioning opportunities, like virtual data access, real-time replication, or optimized data load  
Dedicated big data connector to leverage Big Data landscapes for data onboarding and ingestion for various types of data and files  
Deep integration with SAP Data Hub, including SAP Vora, as orchestration and refinery application to address end to end processes with SAP HANA and SAP BW/4HANA



## Innovate with one trusted source for all insights



CPI

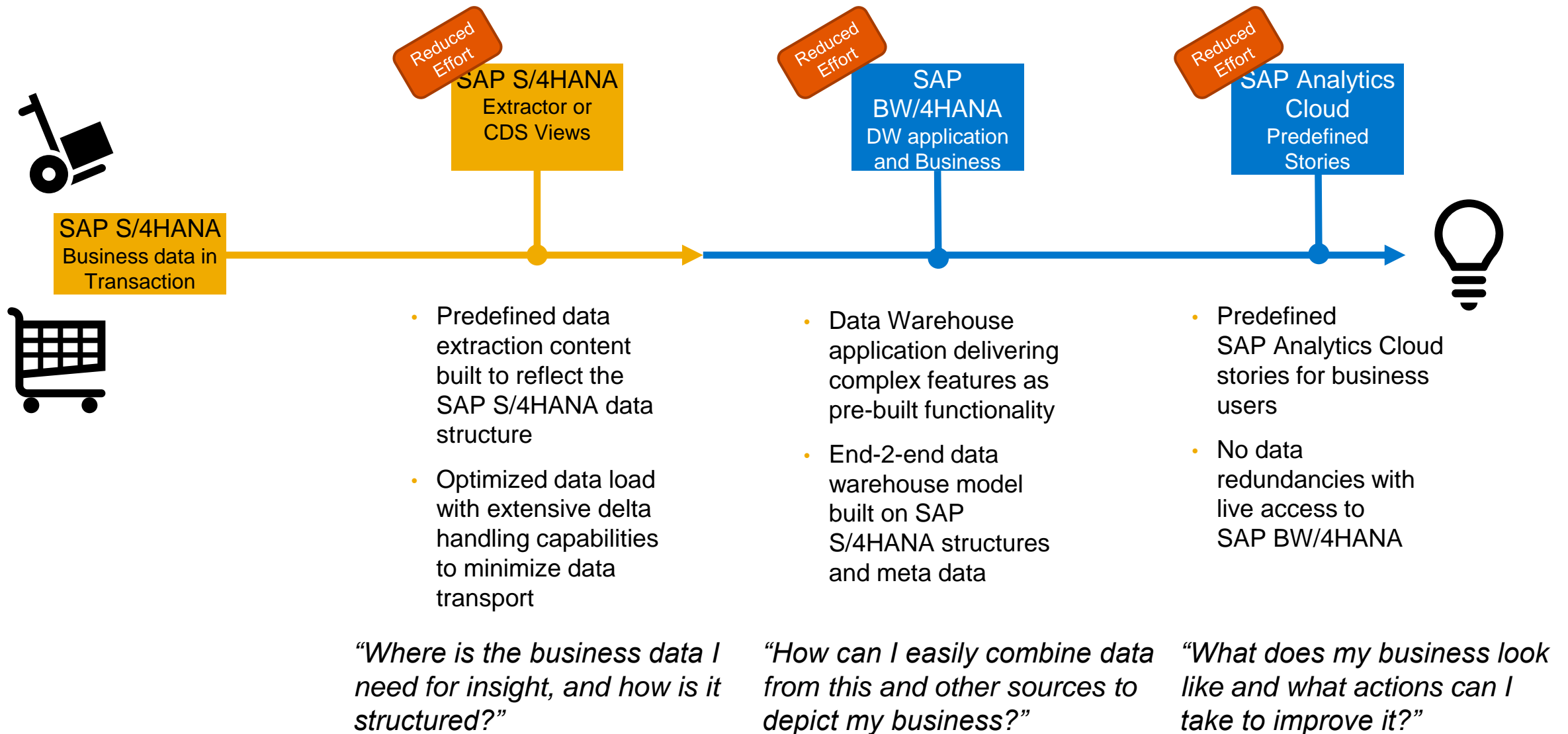


BW/4 Write Interface

Unique native data access for real-time analytics without replication into the cloud; one platform for enterprise planning & consolidation, Predictive Analytics  
Extend managed DW and native SQL approach for the full power of HANA with mixed scenario and analytical apps  
Establish the corporate memory for the Intelligent Enterprise by leveraging the Cloud Platform Integration API framework

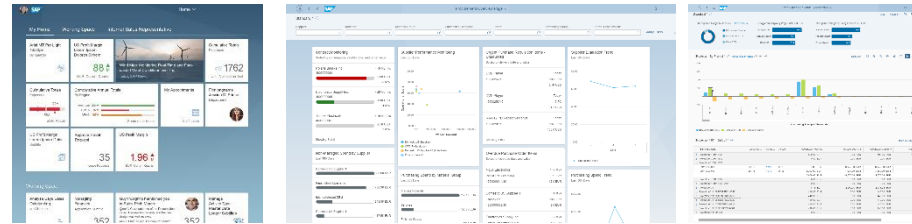


# Lower your TCO: Unique transaction-to-insight process



# Analytics with SAP S/4HANA – high level architecture

## SAP S/4HANA

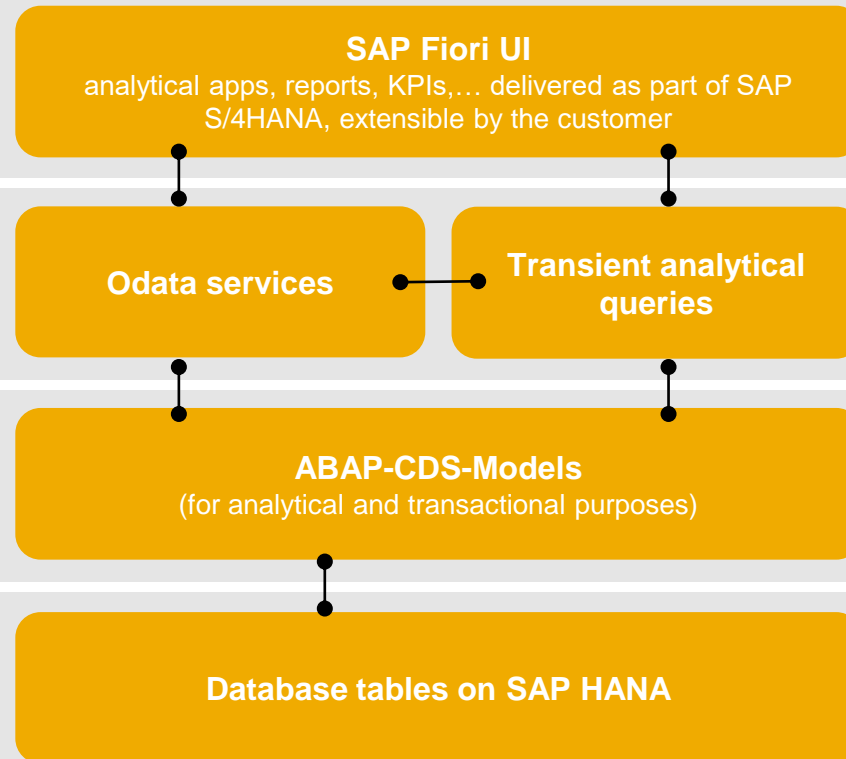


### Visualization

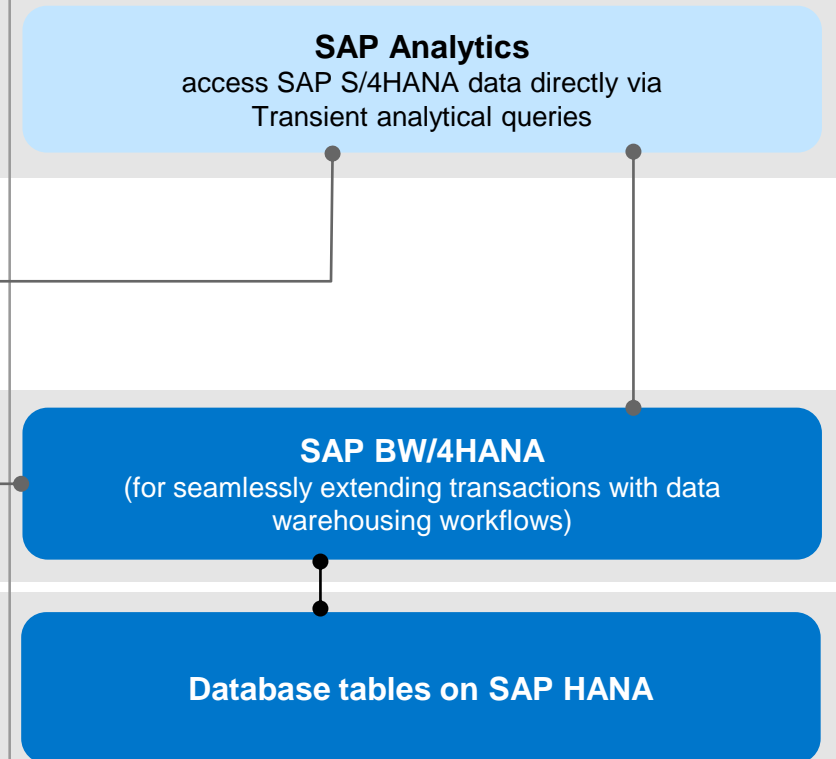
### Access

### Modelling

### Persistence

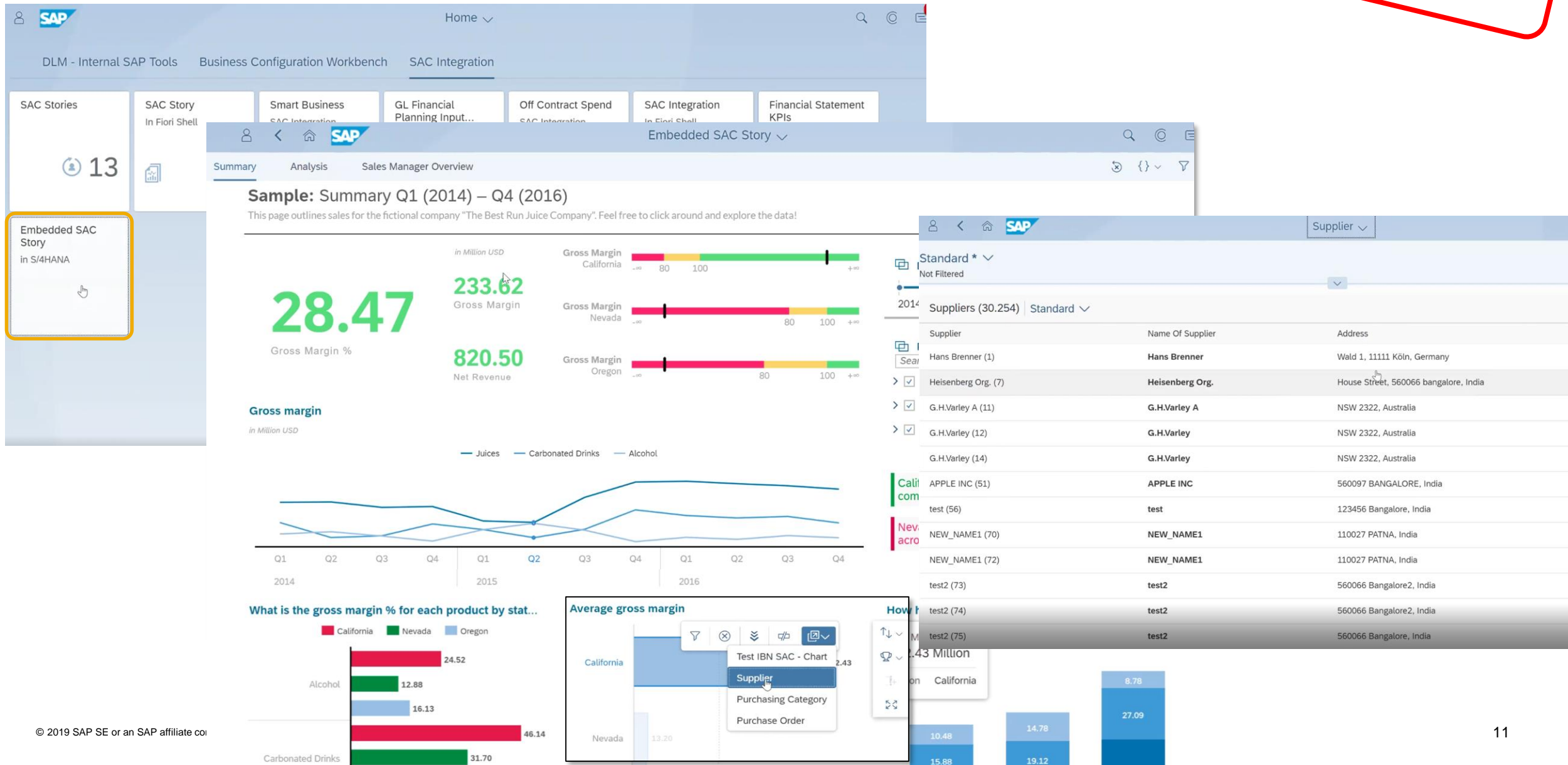


## Intelligent Technologies



# SAP Analytics Cloud is embedded in SAP S/4HANA!\*

\*labs preview



# **Integration of SAP S/4HANA with SAP BW/4HANA**



**"With SAP S/4HANA and SAP S/4HANA embedded analytics,  
do I still need my BW?"**

**"Yes!"**

# SAP BW/4HANA complements SAP S/4HANA

## SAP S/4HANA is not an EDW

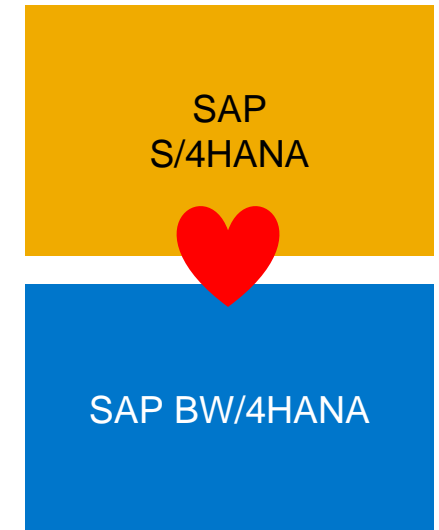
- SAP S/4HANA is the next generation intelligent ERP and part of an Intelligent Enterprise - sized, tuned, and maintained for optimal performance as transactional system
- A modern simplified architecture, the new user experience (SAP Fiori) and integrated intelligent technologies such as Machine Learning allow for new business processes and even automation
- SAP S/4HANA embedded analytics focuses on fact-driven process handling and embedded decision support inside of transactions - embedded BW only for support of transactional workflows

## SAP BW/4HANA is an EDW

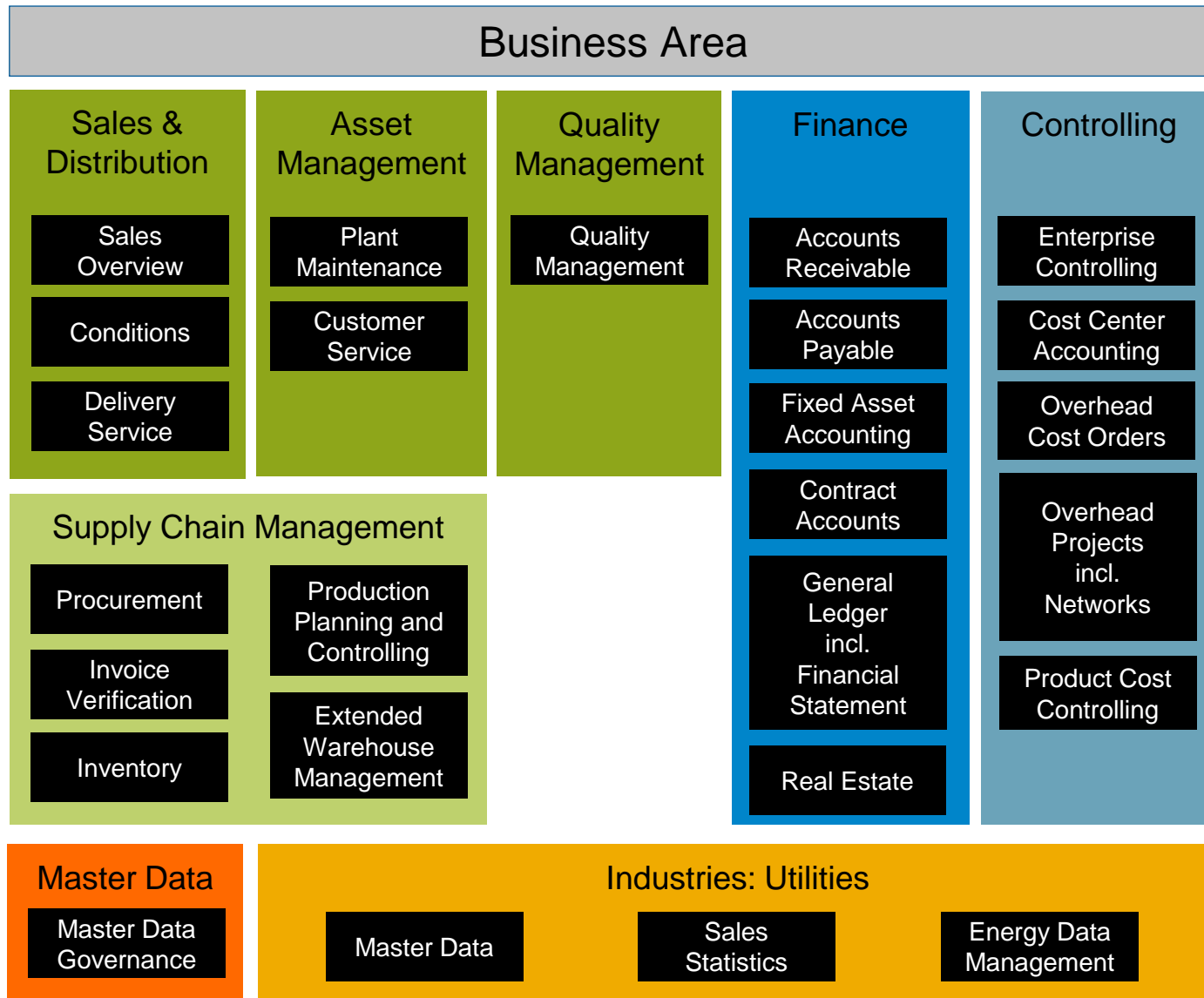
- Allows harmonization of all enterprise data (ERP + non-SAP, governance, corporate memory, big data, ...)
- Delivers complete data warehouse tools (rich integrated toolset for data warehousing)
- Provides deep integration with SAP Analytics and SAP data management (SAP Data Hub, SAP HANA SQL DW, ...)

## Why is SAP BW/4HANA the perfect EDW for SAP S/4HANA?

- Extends seamlessly the business case of SAP S/4HANA including the integration with SAP Data Hub for Big Data and Internet of Things (IoT) use cases
- Availability of specific business content for SAP S/4HANA
- Allows best integration capabilities based on common architecture and terminology (e.g. analytical engine, currencies, user maintenance, ABAP, transports, governance, ...)



# SAP BW/4HANA Business Content: Overview as of SP07



- Supports SAP S/4HANA and SAP ECC systems
- Uses new SAP BW/4HANA features
- Follows the LSA++ architecture
- Delivered content offers more flexibility in data acquisition and reporting
- Provides higher level of detail (line items, ...)
- Quarterly delivery pace



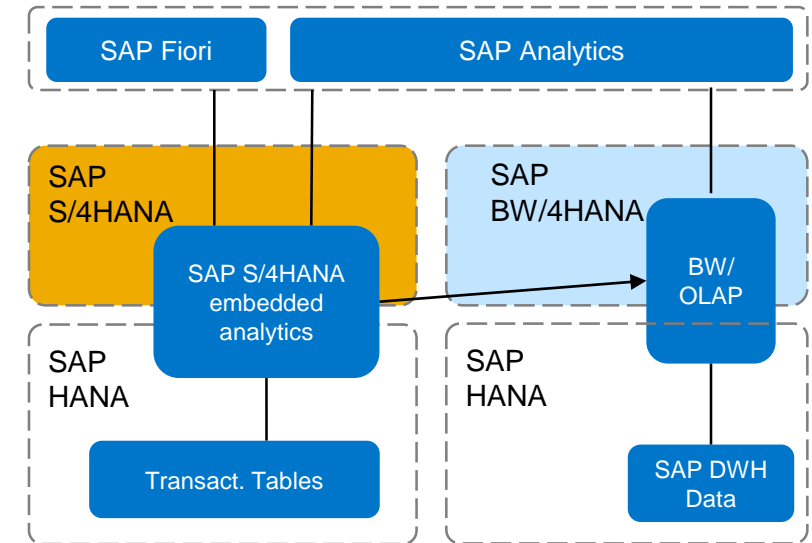
# SAP BW/4HANA and SAP S/4HANA

Leveraging **SAP BW/4HANA** you can **natively integrate** the embedded analytics models and data in SAP S/4HANA with those of an EDW, e.g. to compare real-time actuals with historical snapshots, planning results (from SAP BPC), or external data.

Please refer to the respective [integration blog](#) and [How-to-Guide](#) on [www.sap.com](http://www.sap.com) for further details.

Examples for best-in-class integration are:

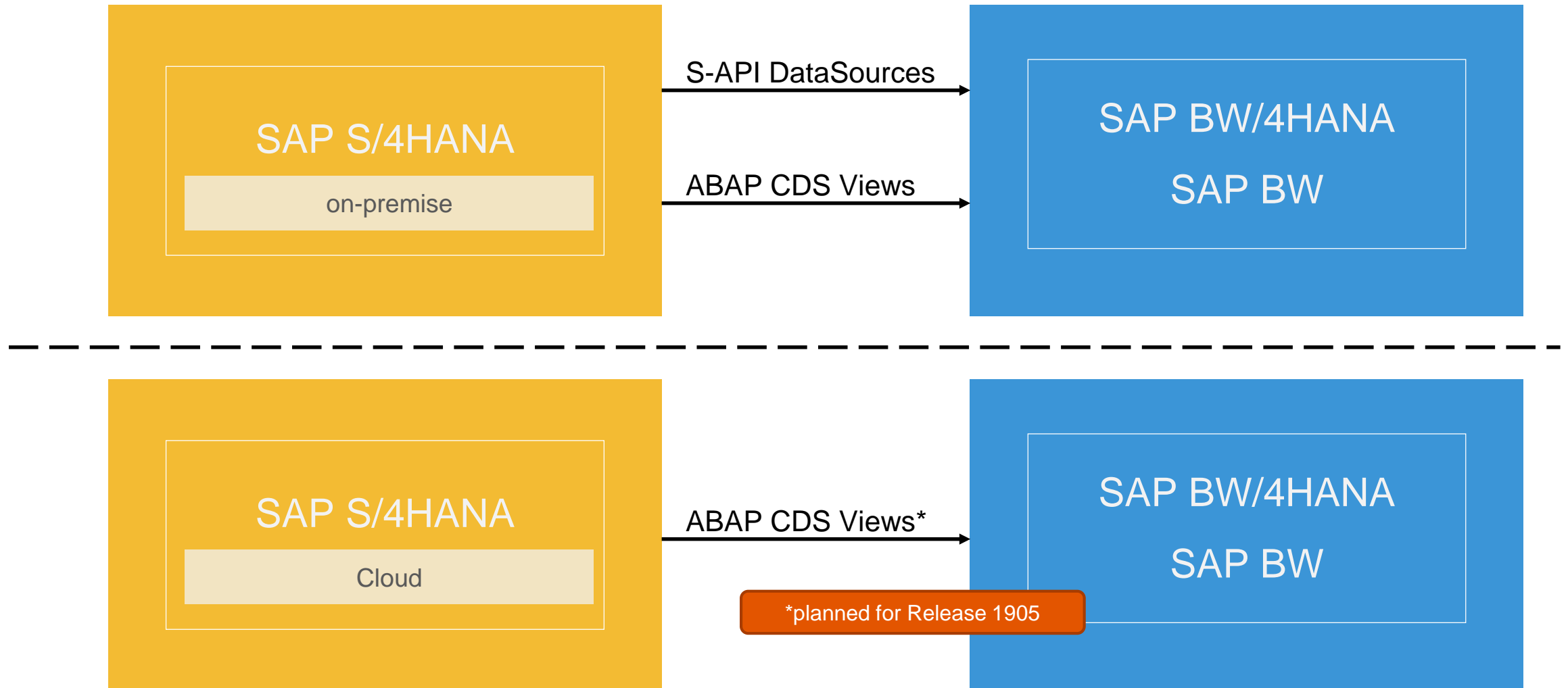
- Out-of-the-box connectivity
  - Visualize SAP S/4HANA data in SAP BW/4HANA without data structure creation in SAP BW/4HANA
  - Standard Extractors (ABAP CDS and ABAP via S-API), as well as open extensibility
- Fast time-to-value enterprise-wide Data Mashups using SAP BW/4HANA-native objects (composite providers etc.)
- Strong data historization capabilities (e.g. easy tracking of slowly changing dimensions)
- Integrated planning use cases based on all necessary existing and harmonized data



## Embedded BW:

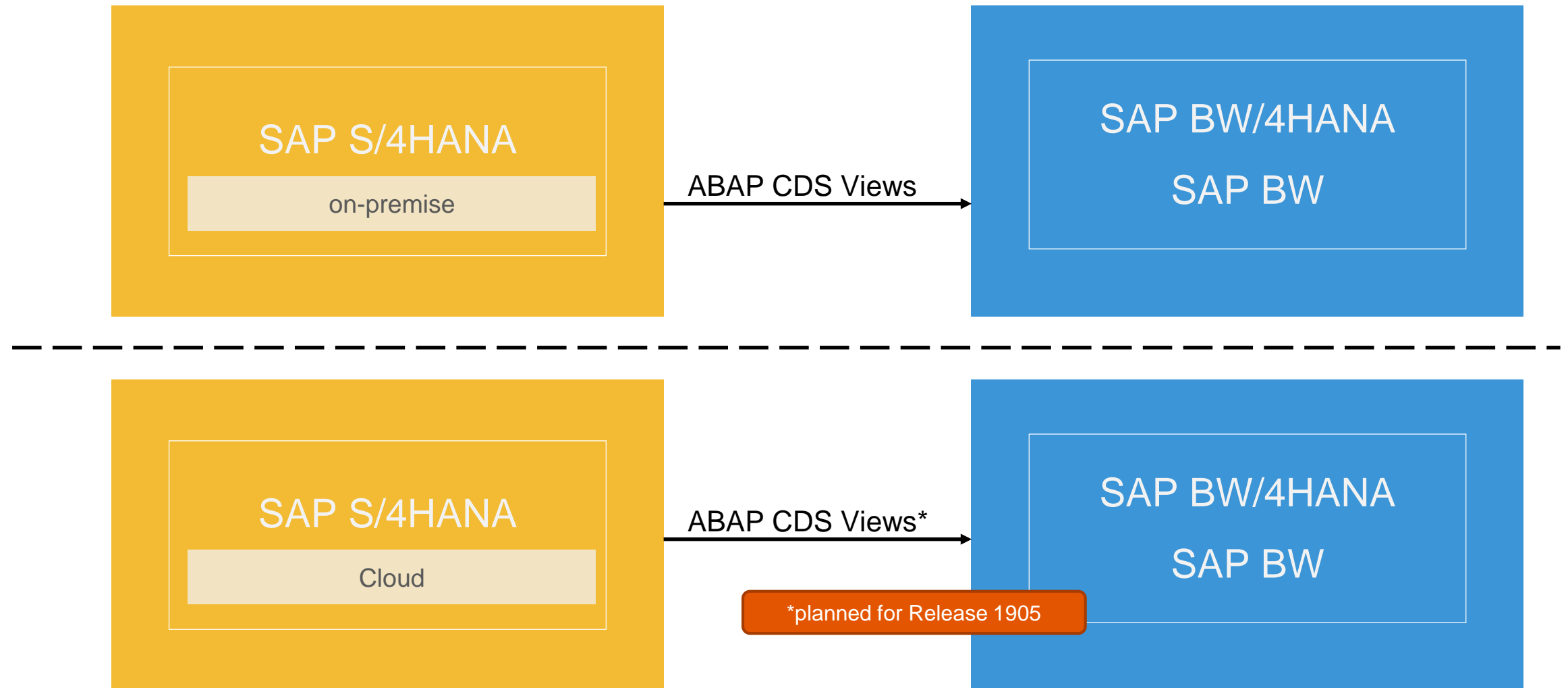
- SAP does **not** recommend using Embedded BW for data warehouse (EDW) use cases!
- For details, see [SAP Community blog](#) and [SAP note 1661202](#), (e.g. Upgrades and patches, Resource allocation and capacity planning, Workload Management, Backup & Recovery, Lifecycle management, High Availability & Disaster Recovery, Security etc.)
- Best practice: The amount of data persisted in the Embedded BW should not exceed 20% of the overall data volume of the system.
- Embedded BW is not an SAP BW/4HANA
- More information [here](#).

# Extraction to SAP Business Warehouse



- For limitations on S-API DataSources (Extractors) in S/4HANA see [SAP Note 2500202](#)
- [How to use ABAP CDS for Data Provisioning in BW](#)
- For release of extractors for ODP see [SAP Note 2232584](#) 'Release SAP Extractors for Operational Data Provisioning' (> 95% are released)

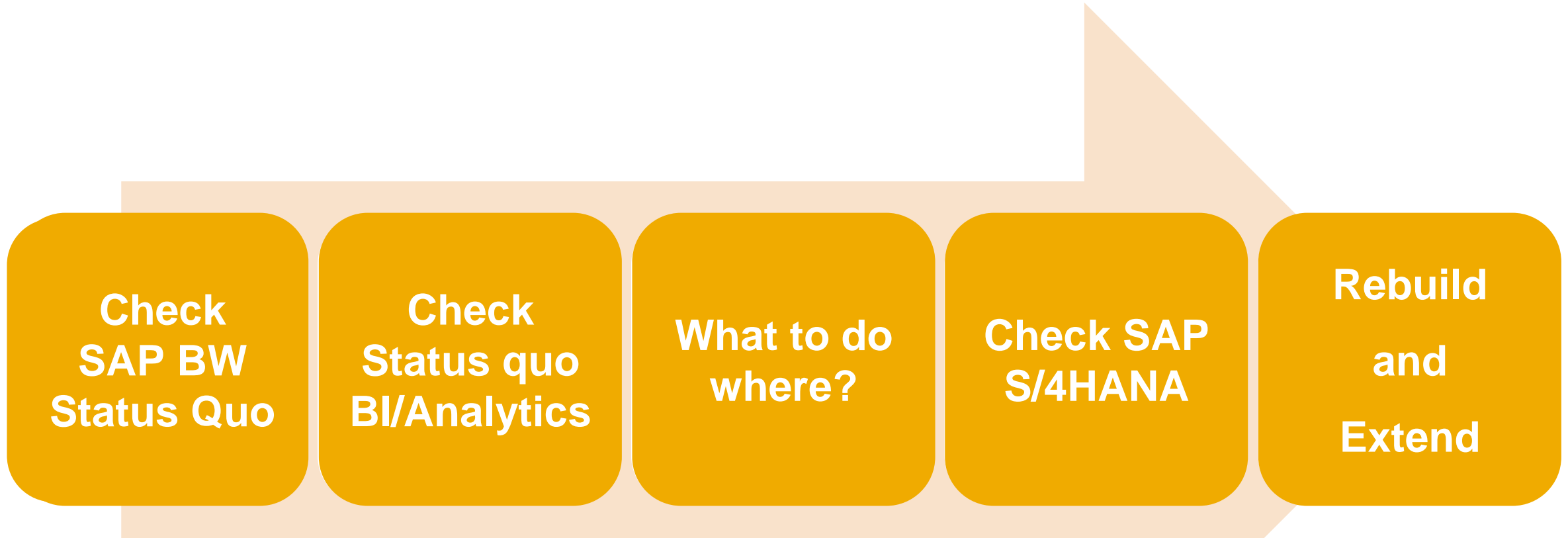
# ABAP CDS-based Data Federation with SAP Business Warehouse



Direct access to SQL views (generated by ABAP CDS) **not** recommended! See [note 2511210](#) for further details.

**What to consider on your route to  
Analytics with SAP S/4HANA?**

# Planning the migration from SAP ECC with SAP BW to SAP S/4HANA with BW/4HANA



\*Prerequisite: SAP BW/4HANA Sandbox existing

# Planning the migration from SAP ECC with SAP BW to SAP S/4HANA with BW/4HANA

Check/test existing and used BW setup and extractors

What is still working (functional fit and/or SAP supported content)\*?

Which frontends have been created using the BEx?

Do housekeeping! What is still necessary?

Establish the status quo of BI/Analytics

Have data sources changed?

Does Big Data play a role?

Do housekeeping! What is still necessary?

Separate analytical requirements (along the business processes) between the operational system, the BI/Analytics layer and the EDW.

Explore how a target architecture would look like ideally using SAP S/4HANA, SAP BW/4HANA, and SAP Analytics BI/PA/Planning.

For pure operational analytical requirements:

Check existing content, applications and capabilities in SAP S/4HANA embedded analytics. See what you can do out-of-the-box.

For all analytical requirements, check Business Content in SAP Analytics and SAP BW/4HANA.

Plan detailed steps to implement all remaining analytical requirements (e.g. by extending SAP S/4HANA, or by exceptional usage of SAP Analytics Cloud and SAP BW/4HANA for operational reporting) - your choices need to be based on project realities (e.g. individual preferences, strategy, efforts, available functionality)

\*Prerequisite: SAP BW/4HANA Sandbox existing

# Now: what to do where?

## SAP BW/4HANA – Core EDW functions

- Data replication (for Snapshots, Performance enhancements)
- Enterprise-wide data harmonization
- Data governance
- Data federation/mashing (EDW)
- LSA modeling
- SAP and non-SAP data
- Planning
- Archiving (for delta comparison)

## SAP Analytics Cloud

- Best visualization
- Focus on cloud-based source systems (e.g. SAP S/4HANA Cloud, MTE)
- Data federation/mashing (without EDW harmonization)
- SAP and non-SAP data
- Planning
- Self Service BI

## SAP S/4HANA embedded analytics

- Operational data
- Real-time data access
- Transactional decision support
- KPI-driven process handling





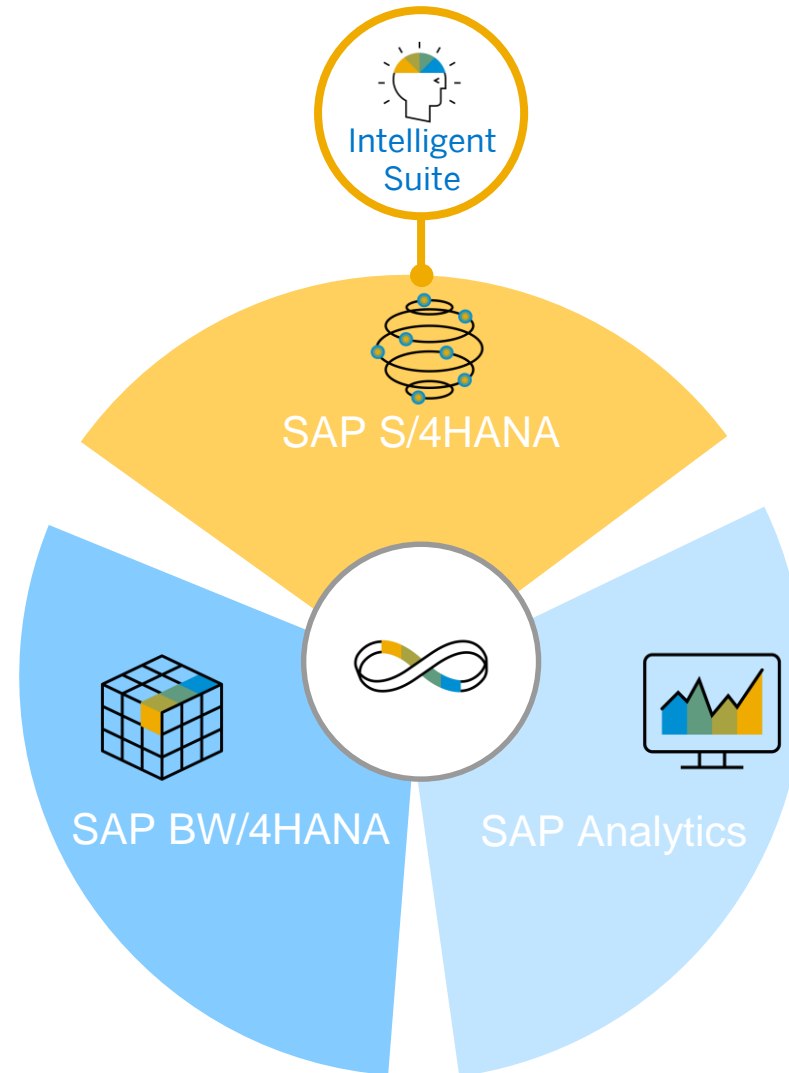
# Summary

# Analytics in the context of SAP S/4HANA

## The complete portfolio

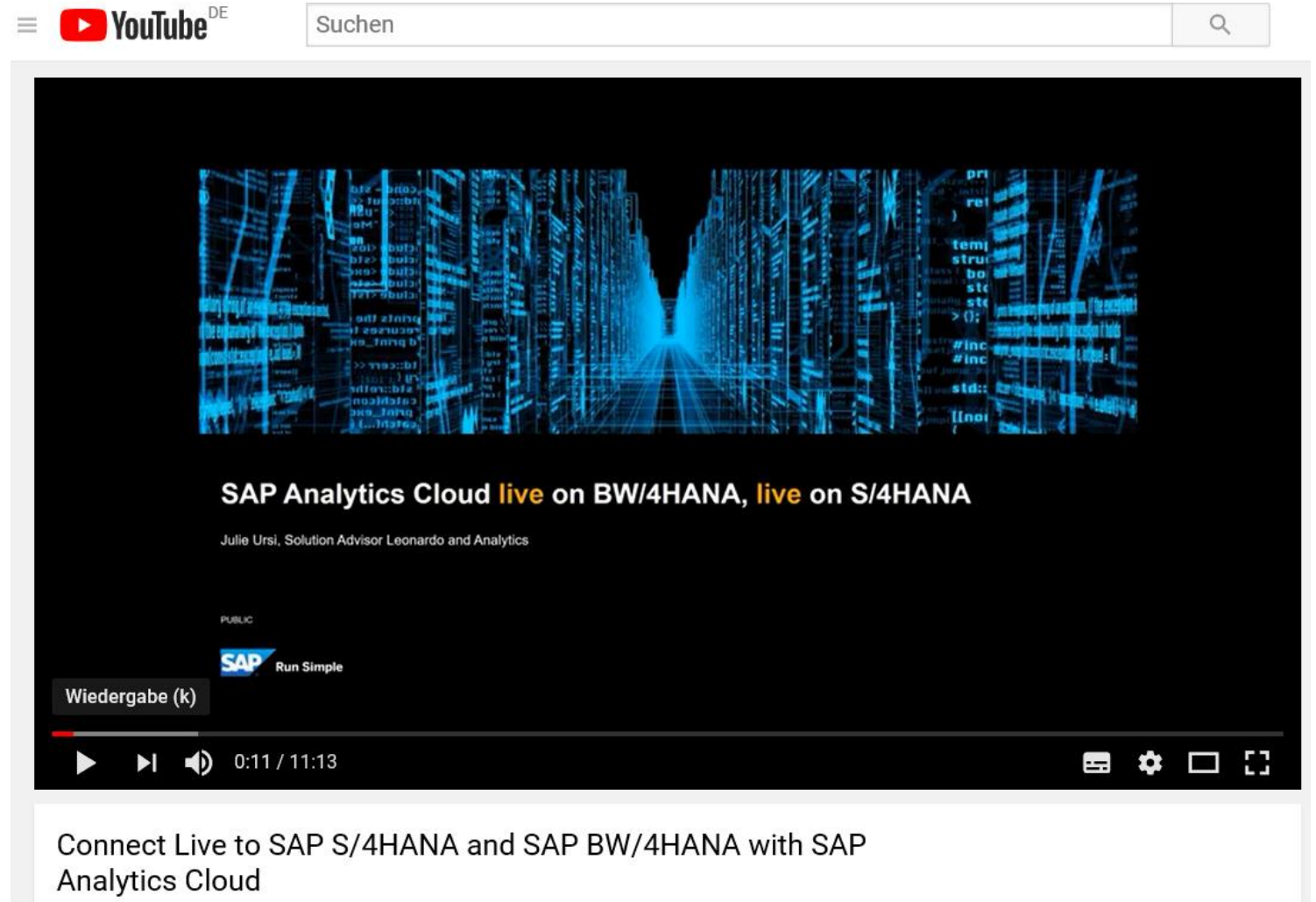


SAP SQL Data  
Warehousing  
with SAP HANA 2.0



# Demo (Full Integration)

<https://www.youtube.com/watch?v=nuc29Zy4U6Y&feature=youtu.be>



The image shows a YouTube video player interface. At the top, there is a search bar with the text "Suchen" and a magnifying glass icon. Below the search bar, the video player displays a blue-tinted abstract background with vertical lines and code snippets. The video title is "SAP Analytics Cloud **live** on BW/4HANA, **live** on S/4HANA". Below the title, the channel name "Julie Ursi, Solution Advisor Leonardo and Analytics" is visible. The video is marked as "PUBLIC". The SAP logo and "Run Simple" tagline are displayed. The video player controls show "Wiedergabe (k)" (Playback (k)), a progress bar, and a timestamp of "0:11 / 11:13". The video description at the bottom reads: "Connect Live to SAP S/4HANA and SAP BW/4HANA with SAP Analytics Cloud".

## Blogs

What is SAP S/4HANA embedded analytics? How does it add value?  
<http://bit.ly/2cPkeqF>

How do I get started with embedded analytics?  
<http://scn.sap.com/community/s4hana/blog/2016/05/27/getting-started-with-s4-hana-embedded-analytics>

How does the SAP S/4HANA embedded analytics architecture look like?  
<http://scn.sap.com/community/s4hana/blog/2016/09/27/journey-of-datafrom-tables-to-tiles--a-sneak-peek-into-the-s4-hana-embedded-analytics-architecture>

SAP S/4HANA Extensibility  
<https://blogs.sap.com/2017/03/01/scn-s4hana-extensibility-scenario-diagrams/>

Embedding Predictive Analytics into SAP S/4HANA Cloud  
<https://blogs.sap.com/2017/05/16/embedding-predictive-analytics-into-sap-s4hana/>

SAP S/4HANA and SAP BW/4HANA positioning  
<https://blogs.sap.com/2017/08/15/sap-s4hana-and-sap-bw4hana-what-to-do-where/>

## openSAP

[Extending SAP S/4HANA Cloud and SAP S/4HANA](#)

## Youtube

[SAP S/4HANA Cloud](#)

[Analysis Path Framework](#)

## Fiori Apps Library

<https://fioriappslibrary.hana.ondemand.com/sap/fix/externalViewer/>

## Documentation

[SAP S/4HANA](#)

[SAP S/4HANA Cloud](#)

## Customize and use SAP S/4HANA embedded analytics!

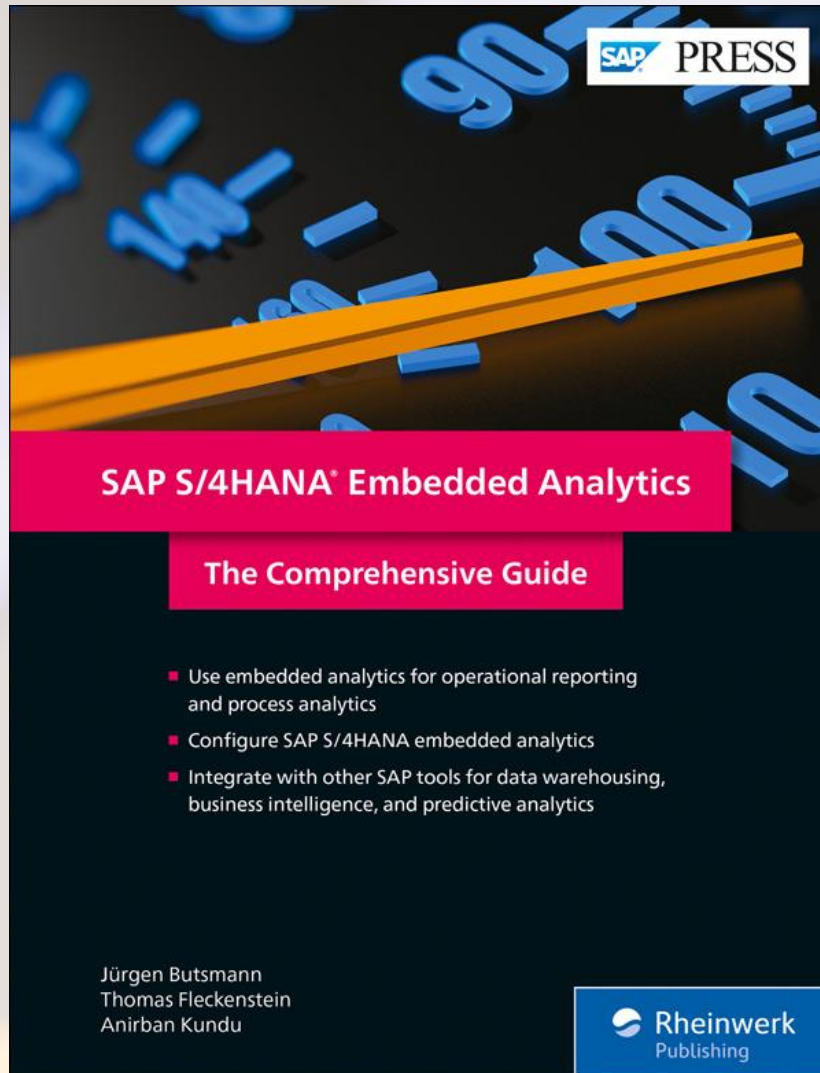
- Configure SAP S/4HANA embedded analytics for your landscape
- Use embedded analytics for operational reporting and process analytics
- Integrate with other SAP tools for data warehousing, business intelligence, and predictive analytics

**Purchase the print or e-book at [sap-press.com/4690](https://sap-press.com/4690)**

### **SAP S/4HANA Embedded Analytics: The Comprehensive Guide**

Written by: Jürgen Butsmann, Thomas Fleckenstein, Anirban Kundu

430 pages | 09/2018 | **E-book:** \$69.99 | **Print:** \$79.95 | **Bundle:** \$89.99



## Customize and use SAP S/4HANA embedded analytics!

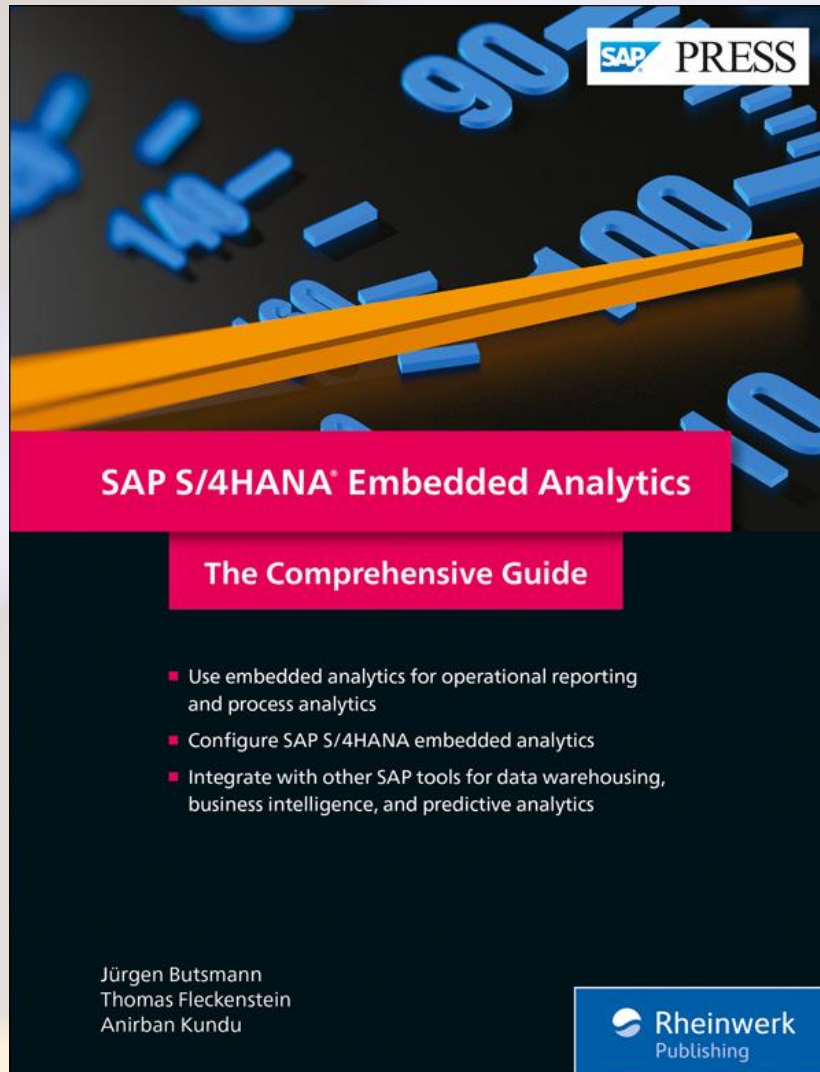
- Configure SAP S/4HANA embedded analytics for your landscape
- Use embedded analytics for operational reporting and process analytics
- Integrate with other SAP tools for data warehousing, business intelligence, and predictive analytics

Save **15%** off the print price and get the e-book for **FREE!**  
Purchase today at the **SAP PRESS** booth.

### SAP S/4HANA Embedded Analytics: The Comprehensive Guide


Written by: Jürgen Butsmann, Thomas Fleckenstein, Anirban Kundu

430 pages | 09/2018 | **E-book:** \$69.99 | **Print:** \$79.95 | **Bundle:** \$89.99





# In Arbeit...



Ihr Konto | Newsletter | Hilfe | Anmelden

Bibliothek

Fotografie | Grafik & Design | Computer & Office | Web & Online-Marketing | Programmierung & Maker | IT-Administ

amazon.de  
prime

Alle | butsmann

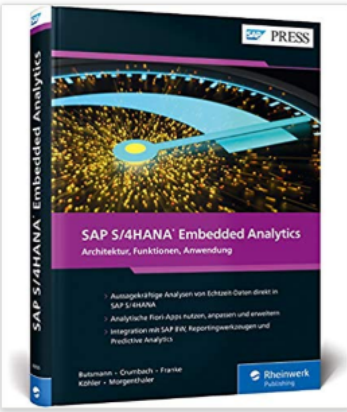
Lieferung an Jürgen  
64579 Gernsheim

Alle Kategorien

Juergens Amazon | Angebote | Gutscheine | Verkaufen | Hilfe

Amazon.de | SALE | Warehouse Deals | Fashion-Sale | Family | Student | Spar-Abo | Pantry | Geschenke | Amazon Apps | Amazon Assistant

Zurück zu den Ergebnissen



### SAP S/4HANA Embedded Analytics: Operatives Reporting in Echtzeit (SAP S/4HANA)

von Jürgen Butsmann (Autor), Manfred Crumbach (Autor), Jörg Franke (Autor), Benjamin Köhler (Autor), Jan Morgenthaler

Alle Formate und Ausgaben anzeigen

**Gebundenes Buch**  
EUR 79,90 ✓prime

Dieser Artikel kann nach Deutschland (Festland) versendet werden. [Siehe Details.](#)

1 neu ab EUR 79,90



**Themen, die zur Sache gehen**  
Entdecken Sie unsere Auswahl an Büchern, die aufrütteln, berühren und zum Nachdenken anregen. [entdecken](#)

### Über dieses Buch

Sie möchten Ihre **Geschäftsdaten einfach und schnell auswerten**? Dann lesen Sie, wie Sie das **operative Reporting mit SAP S/4HANA Embedded Analytics ganz neu angehen** können. Untersuchen Sie **Kennzahlen in SAP Fiori**, nutzen Sie den **analytischen Content**, oder erstellen Sie **individuelle Berichte** auf Basis eigener CDS Views. Mit den so gewonnenen Erkenntnissen sind Sie [Mehr lesen](#)

[Falsche Produktinformationen melden](#)



**Der Beginn einer berührenden und authentischen Familiensaga von Ella Zeiss**  
"Wie Gräser im Wind": Kindle Storyteller-Gewinner 2018 [hier entdecken](#).

### Hinweise und Aktionen

- Sie suchen preisreduzierte Fachbücher von Amazon Warehouse Deals? [Hier klicken](#).



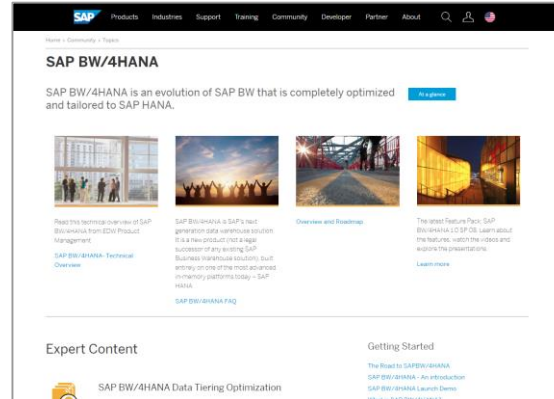


# SAP BW/4HANA



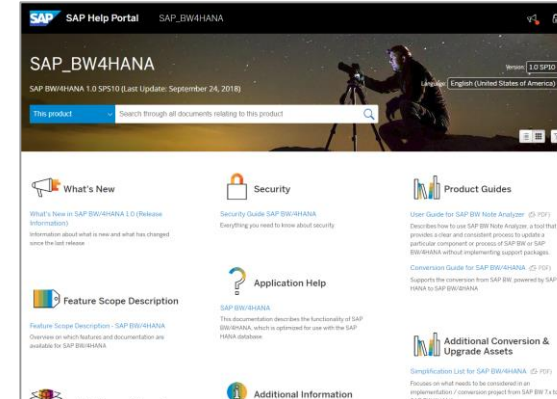
## Home Page

<https://sap.com/bw4hana>



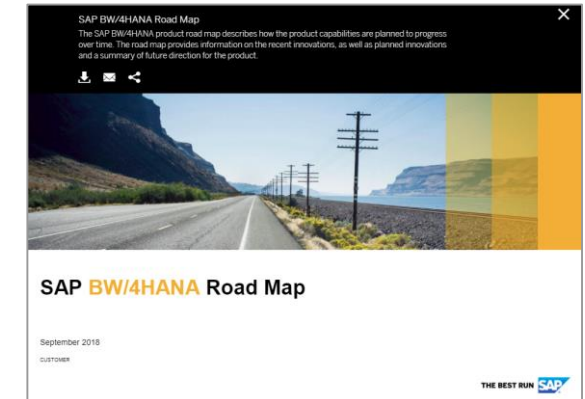
## Community / Product Page

<https://sap.com/bw4hana10>



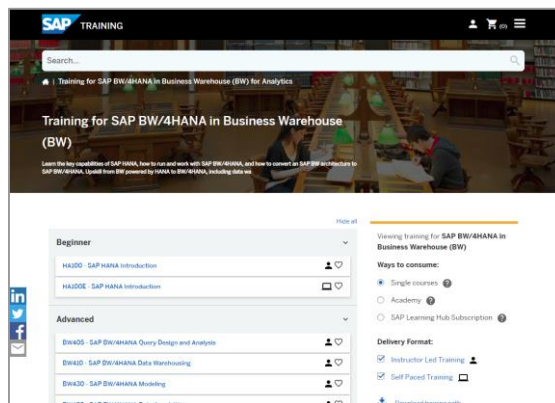
## Documentation

<https://help.sap.com/bw4hana20>



## Product Roadmap

<https://sap.com/roadmaps>



## Training & Certification

<https://training.sap.com/>

### Get Started

[Free Learning @ openSAP](#), [Free Trial](#)

### Get Help

[FAQ](#), [Q&A](#), [Community Wiki](#), [Support](#), [Availability](#)

### Read & Learn More

[SAP Blogs](#), [Community Blogs](#), [Learning Journey](#)

### Transition from SAP BW

[Blog](#), [SAP Activate Roadmap](#), [SAP Readiness Check](#)

### Related Solutions

[SAP HANA](#), [SAP Data Hub](#), [SAP Analytics Cloud](#)



### Watch

[Demos & Tutorials](#),  
[YouTube Channel](#),  
[SAP HANA Academy](#)



### Share & Follow

[#BW4HANA](#),  
[#TheFutureofDW](#)



SAP Analytics Cloud

Product

Solutions

Plans

Learning

Partners

Log In

Try it free



## Experience the Future of Decision Making

From financial planning to sales and marketing, SAP Analytics Cloud helps businesses make end-to-end decisions with confidence.

[Start your free 30-day trial](#)<https://www.sapanalytics.cloud/>

# Thank you.

Contact information:

**Karsten Ruf**

Director Solution Management SAP Analytics

[Karsten.Ruf@sap.com](mailto:Karsten.Ruf@sap.com)

**Jürgen Butsmann**

Director Solution Management SAP S/4HANA

[Juergen.Butsmann@sap.com](mailto:Juergen.Butsmann@sap.com)

# Appendix

# SAP S/4HANA embedded analytics – Overview of current Offering per Type of User

## End-User: Analyze the Data and act according to Insights

Multi-dimensional reports

SAP Smart Business KPIs / APF

Query Browser

Analytical List Pages

Overview Pages

Analytical Fiori Apps

## Key-User: Enable the End-User

CDS Key User Tooling  
(e.g. Query Designer)

KPI and Report Modelling Apps

## IT-User: Provide the single source of truth in one semantic layer

CDS View maintenance:  
ABAP for Eclipse

## SAP Analytics

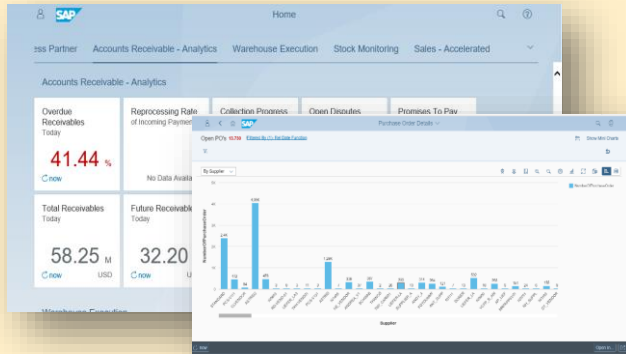
SAP Analytics Cloud

SAP BusinessObjects Enterprise:

Examples: Analysis for Office, Design Studio

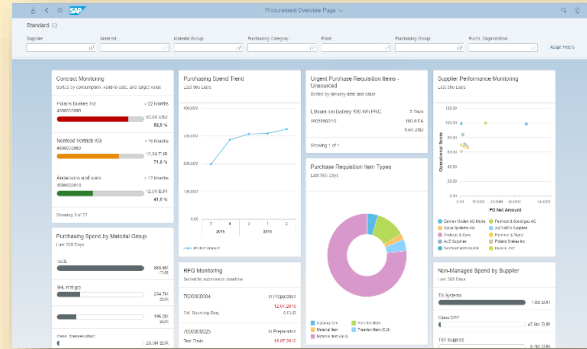
# SAP S/4HANA Embedded Analytics Overview – Business User

## Smart Business KPIs



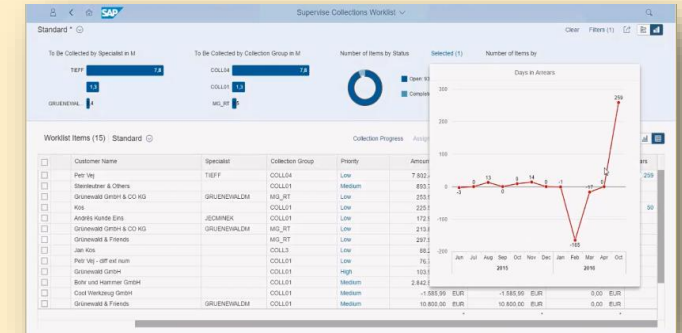
Smart Business KPIs deliver KPI monitoring on the Fiori Launchpad and drill-down capabilities into further analytical or transactional Fiori apps, save personal variants.

## Overview Pages



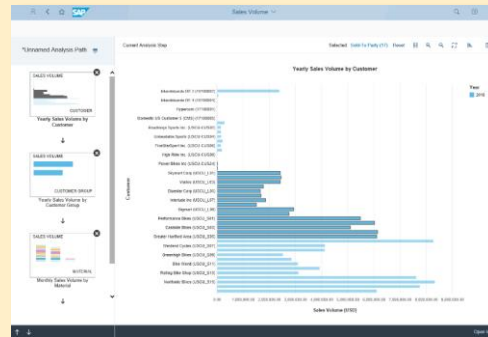
Get a consolidated view on a certain domain, e.g. Purchasing. Information presented in analytical tables and charts, take action in the same place or navigate to more details, save personal variants.

## Analytical List Pages



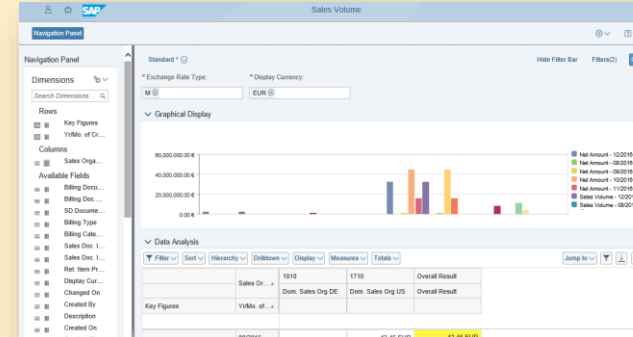
Generic approach to visualize and analyze data. Switch display from table to chart or a combined table-chart-display. Take action directly in the same app or navigate to other apps for more details and actions, save personal variants.

## Analysis Path Framework



Interactive drill-down to explore KPIs and their influencing factors by creating sequences of analytics steps which consist of charts or tables, save personal variants.

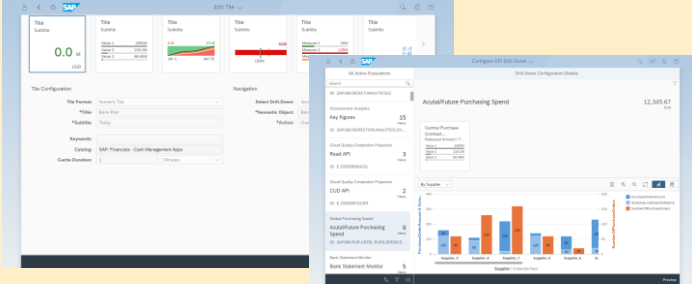
## Multidimensional Reports



Generic approach to analyze data and visualize results for multidimensional analysis. Switch the display from pivot-table to chart and to a combined table chart display, save personal variants.

# SAP S/4HANA Embedded Analytics Overview - Analytics Specialist

# Smart Business KPI & Report Design



Smart Business KPI & Report Modeler enables your company to define, manage, and leverage consistent KPIs and Reports across all your business functions.

## View Browser

[illegible]

Search, browse and tag analytical and non-analytical queries. This application displays all the views that are created and released by SAP as well as the customer-created SAP views.

## Custom Views

Display CDS View

---

<b>Name and Label</b>  Name: /_AccountingClark Label: Accounting Clerk	<b>Statistics</b>  External ID: NA Analytical: Yes, as Dimension
---	---

---

<b>Status</b>  Status: Released Published At: 20230328, 16:15:56 by SCHNEIDERTHOM	<b>Properties</b>  Access Protection: Protected Source Origin: ABAP Development Tools
--	--

---

**Parameters (0)**

Name	Label	Default Type	Default	Semantic:	Semantic Value	Hidden
CDS view doesn't contain parameters.						

---

**Fields (5)**

Alias	Description	Element Type	Data Type (Length and Decimals)
CompanyCode	Company Code	Key	CNAR (4)
AccountingClark	Accounting Clerk	Representative Key	CNAM (2)
AccountingClarkName	Accounting Clerk Name	Fact	CNAM (25)
UserID	User ID	Fact	CNAM (12)
_Company		Association	

If you need access to data in your system in a way the system does not offer so far, you can create your own data access by making use of a Custom Core Data Services view.

## Custom Analytical Queries

**SAP** | Marketing CC | Custom Logical Queries >

### Cash Flow Statement Indirect IFRS (YV1\_2TEDH)

Search Field Selection Display Filter

Display Fields (DS)	Search Display Fields		Up	Down	Alt
Title	Name	Description	Filter	Remove	
▼ Root					
Depreciation of property, plant and equipment	DegDgHgnGndeprecMeCC		✓	✗	
Amortization of intangible assets	OggrngnGndamortMeCC		✓	✗	
Gains/Losses from asset retirement	GndglnGrslssRetrmtCC		✓	✗	
▼ Current					
Ledger Fiscal Year	LdrgrFiscalYear		✓	✗	
Amount in CC-Cry	AmmntnCmncyCurCry		✓	✗	
Cash Flow Statement (Indirect Method)	CashFlowStatement		✓	✗	
Operating Activities	OpertngActvtyMeCC		✓	✗	
Profit for the period	PftforPrdIncmntmntCC		✓	✗	
Adjustments to income and expenses not involving cashflows	IncmntmntAdjstmeCC		✓	✗	
Changes in assets and liabilities	AsstLiabJntmnt		✓	✗	
Increase (Decrease) of provisions	ProvsmntGrnCry		✓	✗	
Increase (Decrease) of inventories	InventryGrnCry		✓	✗	
Increase (Decrease) in accounts receivables net	AccctblvntGrnCry		✓	✗	

**Properties : Increase (Decrease) of Inventories (Measure)**

Label: Increase (Decrease) of Inventories  
 Description: Inventory Asset (Inventory)  
 Dimension:  
 Display: Default = ✓  
 Default: Default = ✓  
 Auto: Run = ✓  
 Collocated: ✓  
 Hierarchy: ✓  
 Parent: Changes in assets and liabilities

Custom Analytical Queries transforms and organizes raw data delivered from business documents into a meaningful multidimensional report.

## Custom Catalog Extensions

[illegible]

With this app you assign your apps, such as new multidimensional reports or KPIs to the required business catalogs and thus to the user roles.

## Transport Management (Administrator)

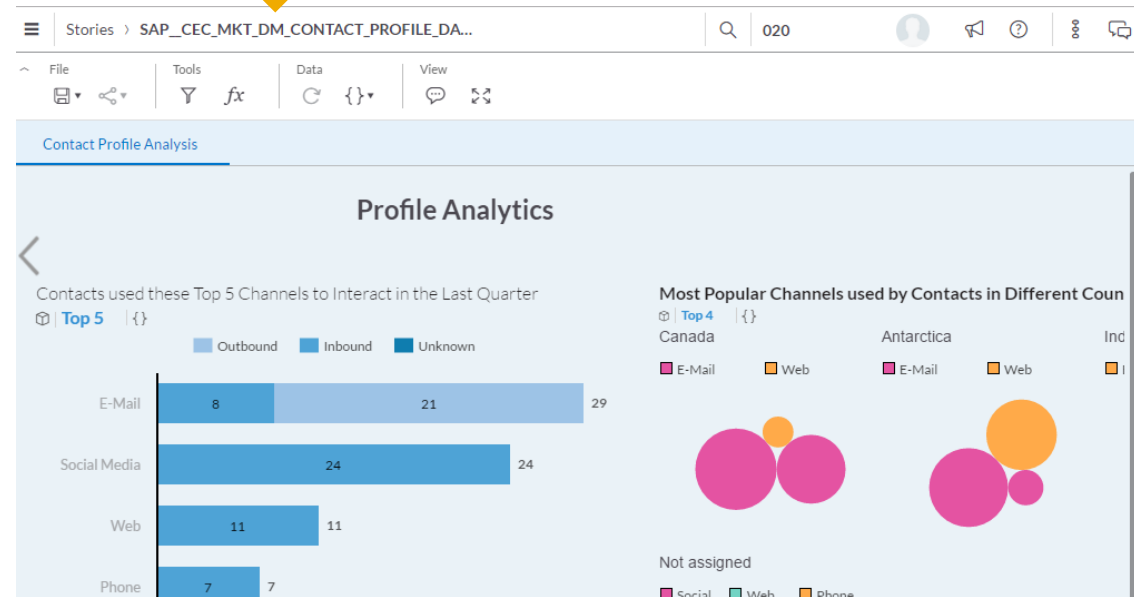
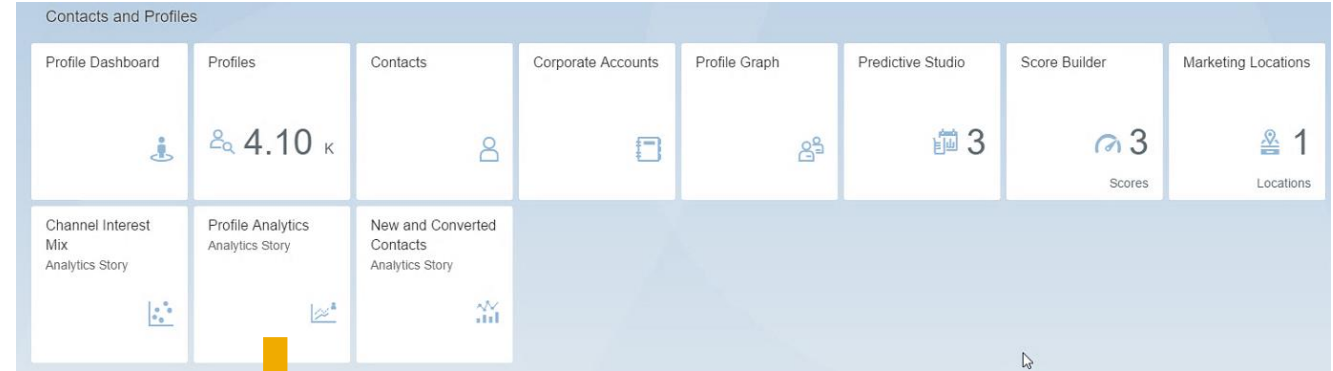
The screenshot shows the SAP Software Collection Explorer. On the left, a tree view lists software components under 'Software Collections (2)'. The selected component is 'SAP S/4HANA 2020'. The right pane displays details for this component, including its version (2020.00.000) and release (2020.00.000). The 'Software Collection' tab is active, showing a table of software components. The table has columns for 'Component', 'Version', 'Release', and 'Status'. The selected component is listed with its version and release information.

Creating software collections, add extension items to your software collections, export your software collection to transport extension items from quality system to productive system.



# Integration with SAP Fiori Launchpad

- Open SAP Analytics Cloud Stories from Fiori Launchpad
- Easily create custom Fiori tiles to launch a Story using OAUTH-enabled Story Catalog Service
- Integrate available pre-defined SAP Analytics Cloud Best Practices content with configured Fiori tiles



# SAP Analytics Cloud + SAP S/4HANA = High-performing Analytics



**BI, Predictive & Planning** based on SAP S/4HANA business logic **in Real-Time** – data changes and modifications reflected **instantly**



**Unique deep integration** with Live Connection to CDS Views, Business Content (models, stories, dashboards), Fiori tile integration, Jump-to-transaction



Leverage existing SAP S/4HANA **Security & Authorizations** Plug & Play without any back-end modifications



**Enrich SAP S/4HANA data** by adding your own calculations (formulas, exception aggregations) and **delegate processing** to SAP S/4HANA



Use the **Analytics Hub** to bring all your information together and accelerate **adoption** of analytics in your business user community



Explore **SAP Digital Boardroom** for a real-time view of your critical business metrics in one place, supporting steering excellence of your **Intelligent Enterprise**