



Successfully Implementing SAP S/4HANA – Part 2

Working with Transition Road Maps

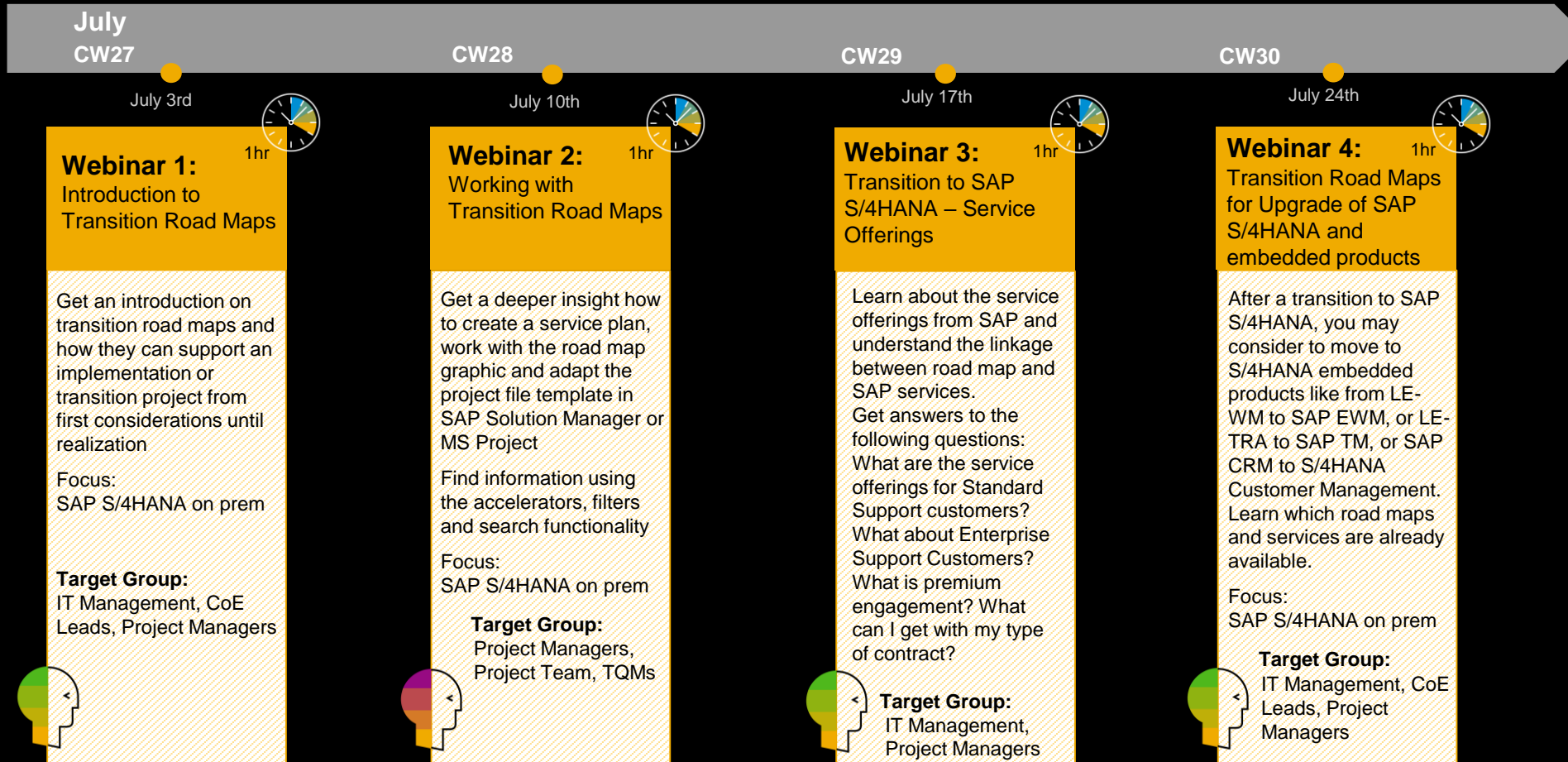
Dr. Christoph Nake, SAP
Dr. Astrid Tschense, SAP
July, 2019
PUBLIC

Legal disclaimer

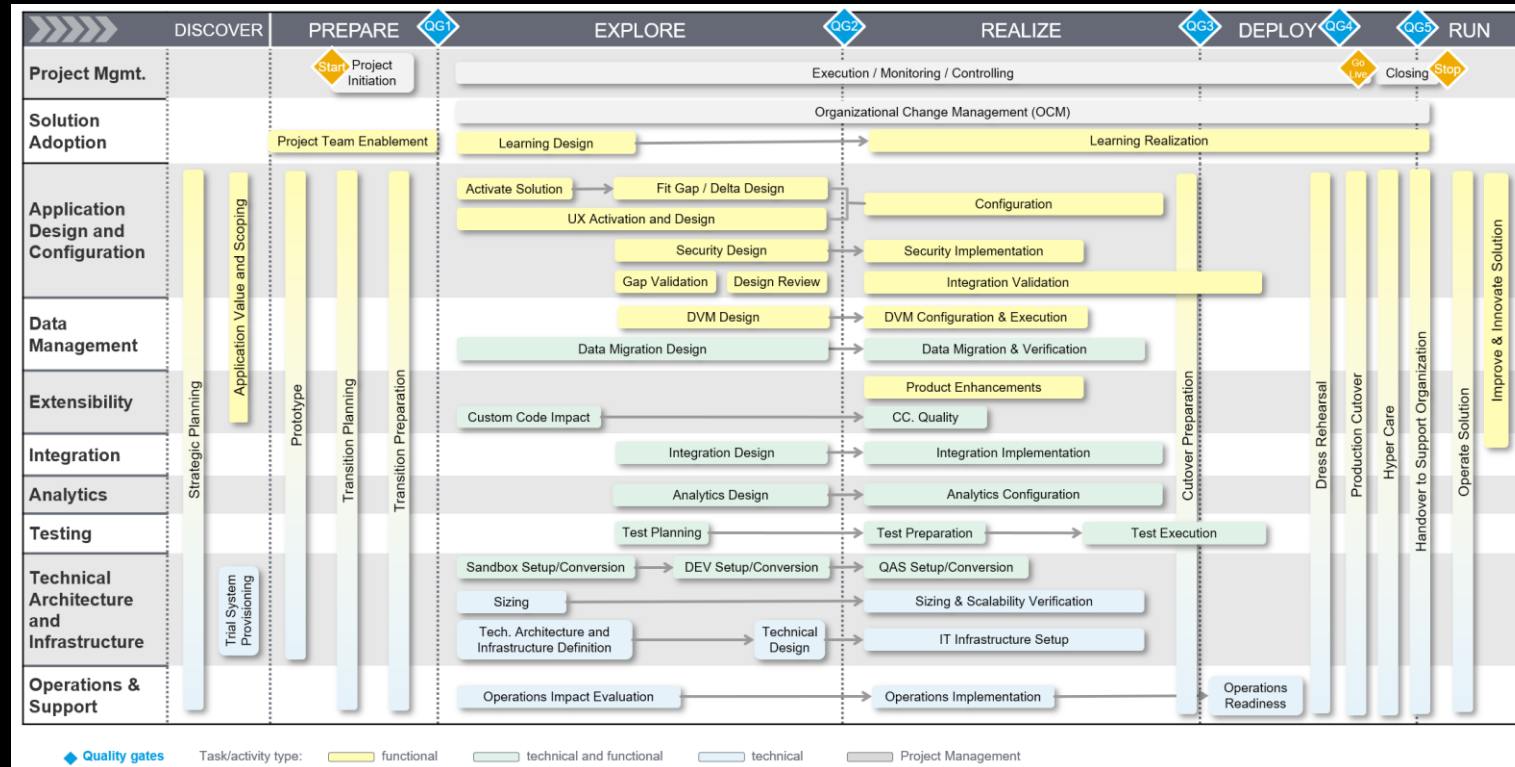
The information in this presentation is confidential and proprietary to SAP and may not be disclosed without the permission of SAP. This presentation is not subject to your license agreement or any other service or subscription agreement with SAP. SAP has no obligation to pursue any course of business outlined in this document or any related presentation, or to develop or release any functionality mentioned therein. This document, or any related presentation and SAP's strategy and possible future developments, products and or platforms directions and functionality are all subject to change and may be changed by SAP at any time for any reason without notice. The information in this document is not a commitment, promise or legal obligation to deliver any material, code or functionality. This document is provided without a warranty of any kind, either express or implied, including but not limited to, the implied warranties of merchantability, fitness for a particular purpose, or non-infringement. This document is for informational purposes and may not be incorporated into a contract. SAP assumes no responsibility for errors or omissions in this document, except if such damages were caused by SAP's willful misconduct or gross negligence.

All forward-looking statements are subject to various risks and uncertainties that could cause actual results to differ materially from expectations. Readers are cautioned not to place undue reliance on these forward-looking statements, which speak only as of their dates, and they should not be relied upon in making purchasing decisions.

Webinar Series



Working with the Road Map Structure Picture (1)

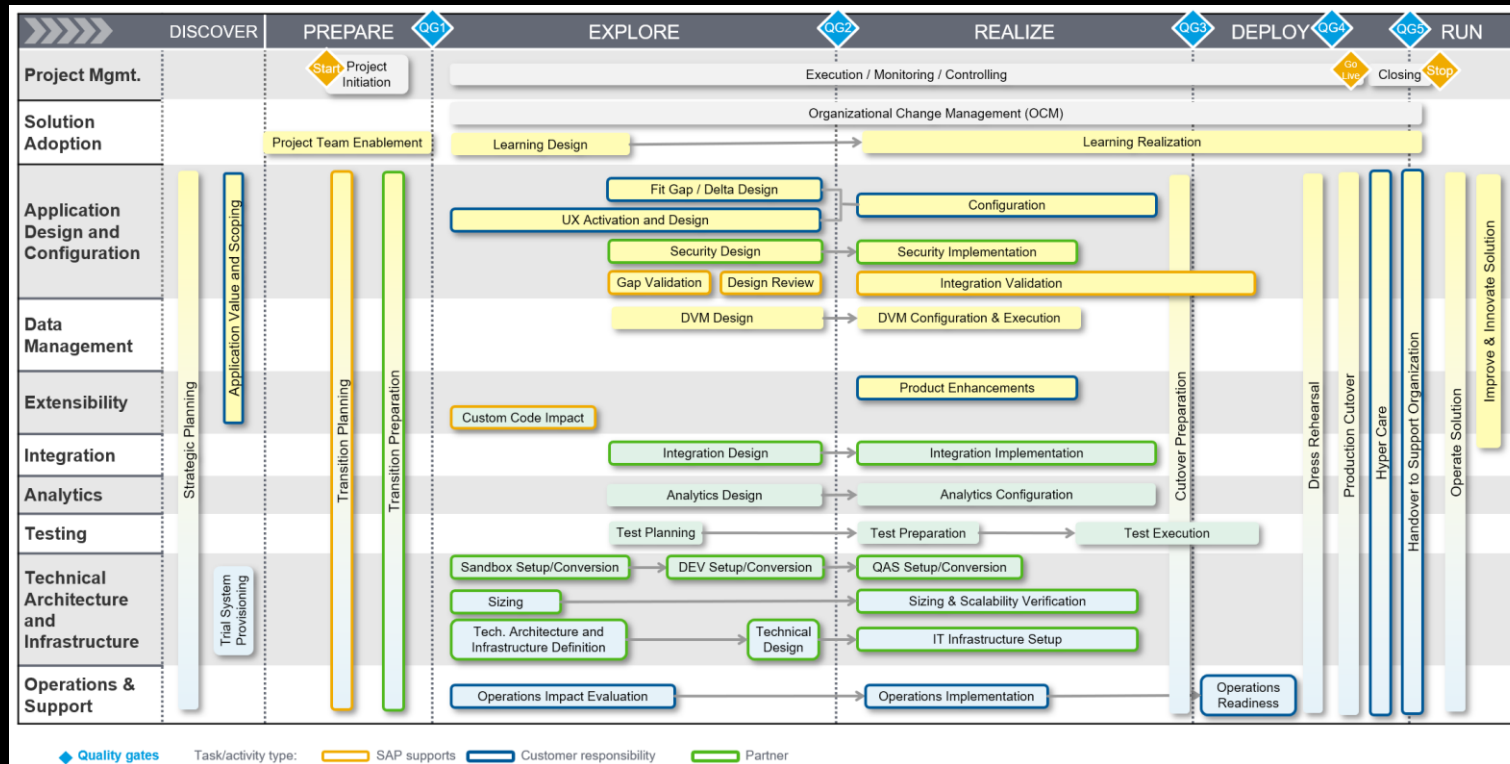


First round on the structure of your transition project

- Adapt the structure slide to your project requirements
Consider:
 - Which activities are required for the planned scenario?
 - Which activities are missing?
 - Adapt activity sequence, if required
 - Each box on the slide represents an activity, each activity may contain several tasks. All activities/tasks are described in the Road Map Viewer. Get a first overview of project flow.
 - The size of the box does not refer to a duration/importance of the activities. Make a first estimate on the efforts – are there activities where only limited effort is expected?

The road map structure picture ppt is available for download in the Road Map Viewer → „Download Project Plan“

Working with the Road Map Structure Picture (2)



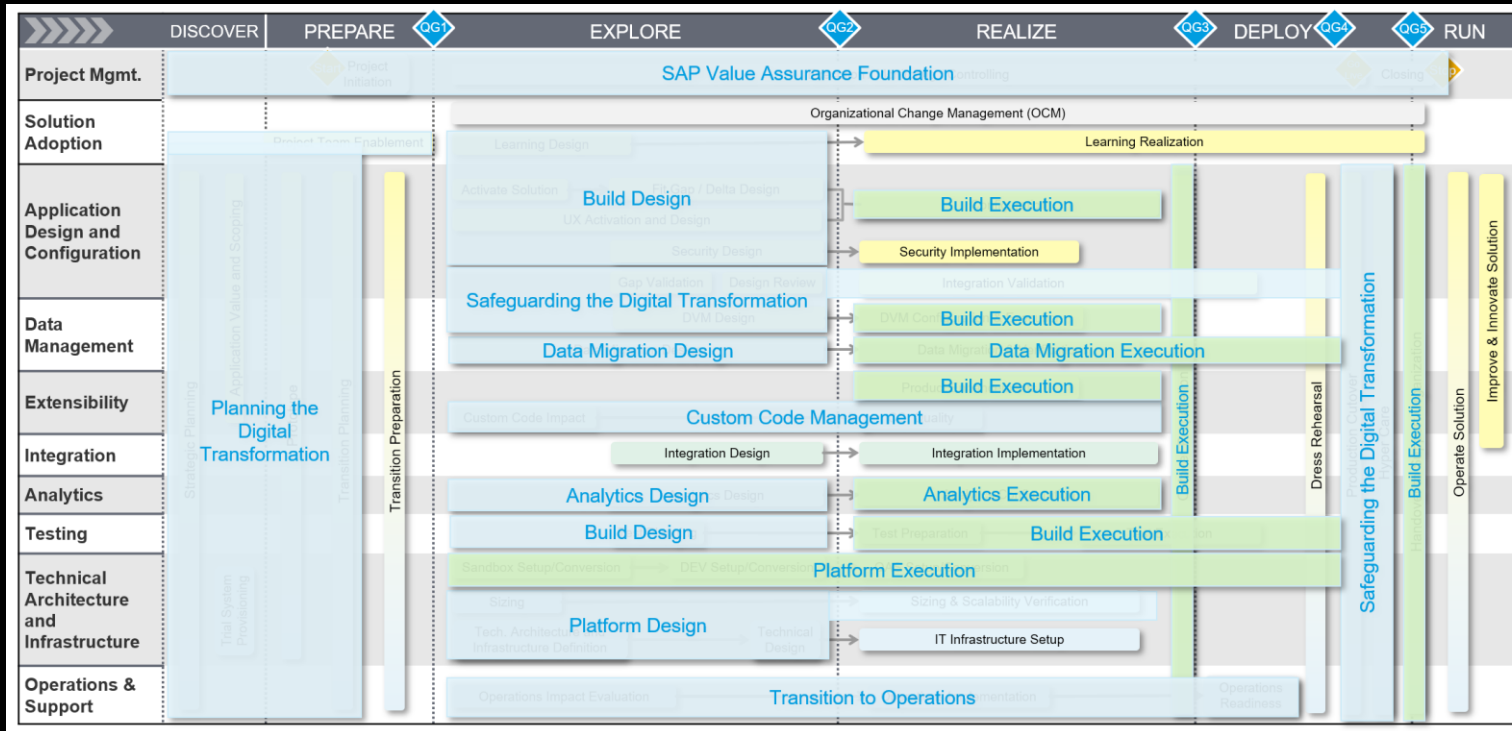
- Discuss and define activity responsibilities with customer/partner/SAP
Consider:

- Which activities can the customer cover?
- What is done by a partner/SAP?
- Which results/outcomes are expected from an activity – what is the handover to the next activity?
- Safeguarding? Q-Gates?

Next level consideration:

- Roles and responsibilities (customer)

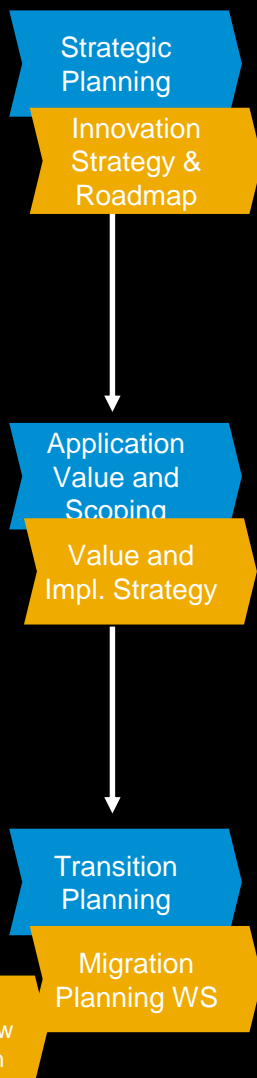
Working with the Road Map Structure Picture (3)



- Learn how SAP services are mapped to road map activities

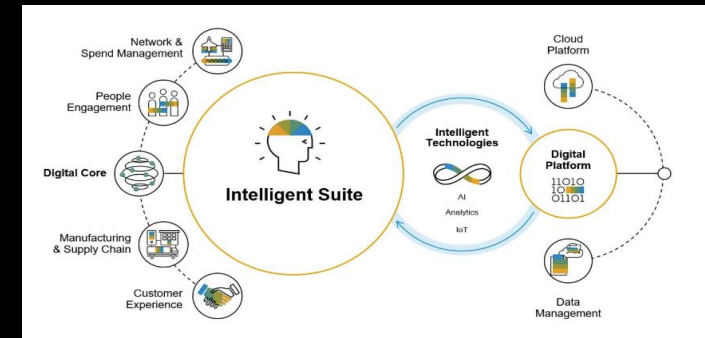
Consider:

- Should SAP support in the planning and design?
- Is the execution done by customer/partner or by an SAP service?
- Should the Safeguarding be done by SAP?
- Transfer the decision on services to a service plan

[illegible]

SAP Innovation and Optimization Pathfinder

SAP Transformation Navigator



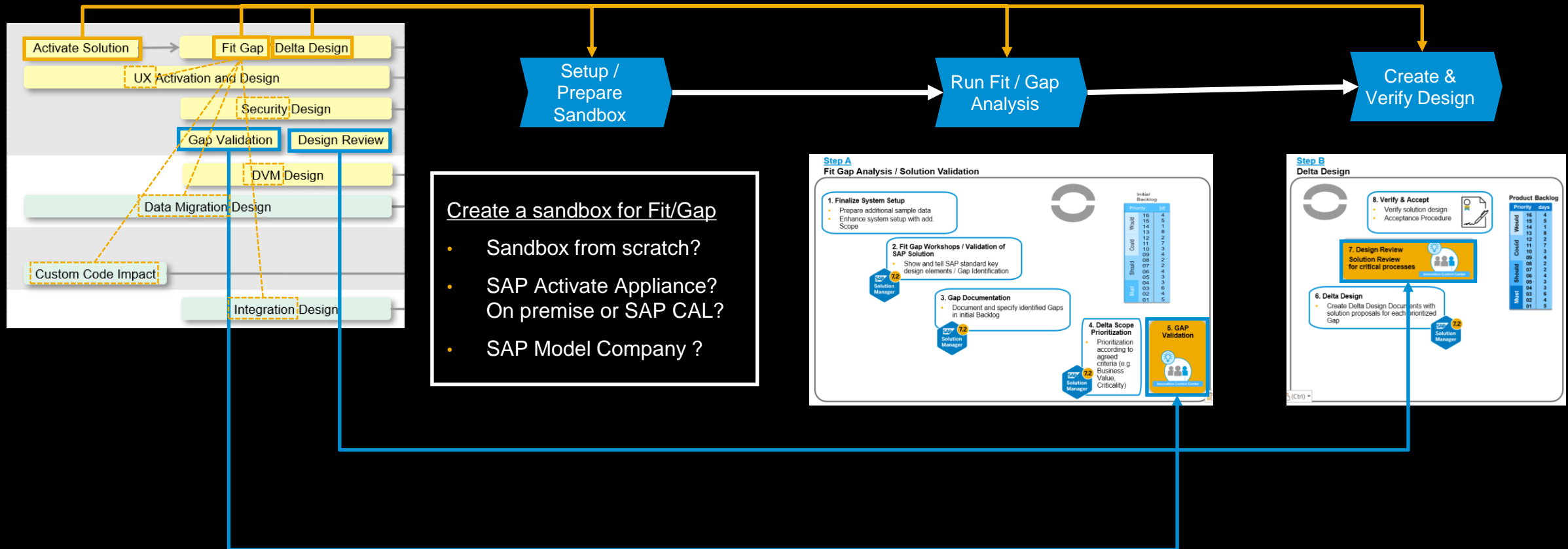
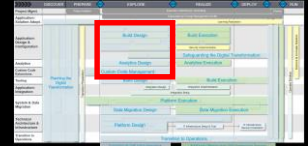
- ❑ Perform a business scenario and solution mapping.
- ❑ Validate the conversion readiness of your existing SAP ERP system and define the **implementation strategy** by considering the target architecture.
- ❑ Create a **strategic road map** based on the target architecture and implementation strategy.

Supportive Tool: SAP Readiness Check

- ❑ Define the technical architecture and data migration architecture
- ❑ Clarify the adaptation of existing custom code and development of new custom code...

The result is a **high-level project plan** which will be detailed out in the next steps.

Functional Design – Example for New Implementation



Example: Info on Fit-Gap Analysis Workshops

How to Approach Fit-Gap Analysis Workshops On-Premise

Speaker's Name, SAP
Month 00, 2018

PUBLIC

Partner logo



THE BEST RUN

What happens during Fit/Gap analysis?

Workshop Type A Solution Validation Workshop

1. Reference Value

- Provide Process, Value and Strategic Context
- Set boundaries and expectations
- Tie to Business Case & Value Drivers

2. Validation of SAP Solution

- Show and tell SAP standard key design elements

3. GAP Identification

- Identify and document gaps to standard;
- Log additional scope items

4. Backlog / Gap Prioritization

Product Backlog	
Priority	days
Must	16 4
Should	15 5
Could	14 1
Would	13 8
Must	12 2
Should	11 7
Could	10 3
Would	09 4
Must	08 2
Should	07 2
Could	06 4
Would	05 3
Must	04 3
Should	03 6
Could	02 4
Would	01 5

Workshop Type B Delta Design Workshop

6. Verify & Accept

- Verify process and solution design
- Drive acceptance for release and sprint planning

5. Delta Design

- Update Business Models and Process Design for delta requirements
- Solution Design and Visualize for the gaps

7. Release & Sprint Planning

Product Backlog	
Priority	days
Must	16 4
Should	15 5
Could	14 1
Would	13 8
Must	12 2
Should	11 7
Could	10 3
Would	09 4
Must	08 2
Should	07 2
Could	06 4
Would	05 3
Must	04 3
Should	03 6
Could	02 4
Would	01 5

BUILD DESIGN

INFORMATION SHEET FOR SERVICE DELIVERY

The build design service is a comprehensive end-to-end offering, covering activities during the implementation of SAP S/4HANA on premise. Main goal is to deliver a customer's SAP S/4HANA target solution based on the functional scope.

The build design service belongs to the SAP Value Assurance accelerated package.

With a standardized, repeatable, and efficient methodology, the service supports implementation projects, no matter if these projects are led by the customer or by the service provider.

Methodology is based on SAP Activate, considering pre-configured content and SAP Best Practices.

It delivers relevant activities for gathering functional requirements, including the execution phase.

AT A GLANCE

Key Features

- This service provides the to-be design for SAP S/4HANA implementation scenarios, like SAP Model Company or SAP Best Practices.
- The service enables a customer to experience the simplification of SAP S/4HANA across Core Finance, Order to Cash, Procure to Pay, Production, and Sales.
- Service performance can be based on an agile implementation approach.
- Key element is an SAP S/4HANA sandbox to be used to define functional requirements of running a system conversion or new install scenario.

Benefits

- Jump-start enabled with predefined SAP Best Practice or SAP Model Company content
- Increased efficiency by focusing on deltas only
- End to end view of build design covers all relevant activities covering business, technical, and organizational aspects like security design, user experience (UX) management, test planning and enablement

When to Use

- You have successfully performed the discovery and prepare phase
- Implementation and would like to kick-off designing your to-be solution
- You can leverage the capabilities of build design in a partner led scenario



Deliverables:

- Established and enabled Key User Network to support project delivery (e.g. testing, training and support activities)

The component is executed in on-site workshops involving the training manager, project manager and business key user. In up to five workshops topics are reconsidered depending on the customer's selected scope.

Duration: 4-6 weeks (dependent on project complexity and scope)

Learning Need Analysis Key and End User

Objectives:

- Identify learning needs for different Key User & End User
- Outline the course content based on the different user groups
- Align with key project stakeholders on learning needs and digital learning opportunities

Activities:

- Identify the processes in scope and analyze the required skills together with the project team
- Perform workshops with subject matter experts (SMEs) to identify target groups and learning requirements for each process
- Develop a learning need analysis considering the change impact analysis
- Identify the right learning methods for each topic and target group in respect to the enablement strategy
- Develop course catalogue and course outlines from the results
- Estimate resources needed for material preparation and delivery

Deliverables:

- Enablement Portfolio
- Enablement measurements per target group
- Description per enablement measurements
- Estimation of realization effort

The component is executed in on-site workshops for every involved business area (e.g. sales, production, finance, controlling etc.) an on-site workshop is executed involving the training manager, project stream lead and business key user.

Duration: 2-6 weeks (dependent on project complexity and scope)

Service Component: Fit Gap Analysis and Delta Design

Fit-Gap Analysis

- The purpose of fit gap analysis is to validate the predefined scenarios, processes and enhancements, to identify potential gaps between the delivered product (sandbox) and customer's requirements. The service component captures requirements for all types of gaps. Identified gaps will be recorded with a proposed solution.
- The service component is executed during several on-site workshops involving the stakeholders from the respective business areas. The pre-configured solution (sandbox) will be used to show and tell the SAP S/4HANA capabilities.
- The result of the fit gap analysis will be an initial gap list (backlog) with an effort indication.
- Within each solution capability, the following requirements (gaps) need to be documented initially:
 - Functional deltas against sandbox or SAP Best-Practice content
 - Technical deltas leading into Workflow, Reports, Interface, Conversion, Enhancements and Forms (WRICEF) objects
 - Deltas leading to changes in the UX
 - Business roles assigned to transactions and requirements for authorizations
- Duration: 4-12 weeks (dependent on project complexity and scope)

Delta Design

The purpose of delta design is to detail and document solutions for those gaps/requirements that were identified during the fit-gap session and subsequently prioritized by the customer. This leads to finalizing the

How to build a Service Plan

EXAMPLE

Phase	Service	Service Component	#D	Comment	Expected Outcome
E2E	Safeguarding the Digital Transformation	TQM Days	28		
Discover	Planning the Digital Transformation	Value and Implementation Strategy	25	Results feed into MPW	implementation strategy, strategic road map
Prepare	Planning the Digital Transformation	Readiness Check	5	Results feed into MPW → Should run 4-5 weeks in front of MPW	Assess Conversion Readiness of ERP, Determine relevant scope items
	Planning the Digital Transformation	Migration Planning Workshop	25	Results feed into TAI → Should run 4-5 weeks in front of TAI	high-level project plan System-level transition road map
Explore	Planning the Digital Transformation	Technical Architecture & Infrastructure	12	basis for ordering hardware and setting up the data center	short-range and mid-range technical architecture and infrastructure of the SAP solution, customer-specific deployment plan
(Discover) Explore	Custom Code Management	CC Tools Enablement	10	Depends on CC situation & experience w/ CC tools	
Explore	Custom Code Management	CC Impact Analysis	10		
...					

- Learn how to build a service plan (Usually done by TQM, Project Manager) Consider:

- road map sections „How SAP can Support“ may help to identify the right services
- Read the **Service Information** in the Accelerator section
- Check the order of services: is outcome of one service prerequisite/accelerator for another?

Transition Planning for On-Premise Solutions Service Components

Service Component: Migration Planning Workshop

In the prepare phase of a system conversion or landscape transformation project, it is critical to establish a solid foundation for the project and build a transition plan that is based on best practices and experience.

This on-site workshop constructs a system-level transition road map and a high-level project plan based on the following:

- Technical and functional readiness of the current environment
- Appropriate transition tool and approach for the transition
- Current and future software change management requirements
- Customer's objectives for the project

This workshop also introduces topics such as transition to operations, custom code management, and technical architecture of SAP HANA, as they relate to the planned transition.

This workshop helps customers that may be considering or planning the transition of an existing SAP solution to SAP S/4HANA, SAP Business Suite powered by SAP HANA, SAP BW/4HANA, or SAP Business Warehouse powered by SAP HANA.

In addition to the workshop, this component includes:

- A holistic overview of the topics required for consideration during the planning of a project, including transition approaches and tools, technical dependencies, mandatory functional considerations, sizing, technical architecture, operational readiness, testing, and quality management
- A remote assessment of the customer's system(s), which is conducted using the readiness check service component in preparation for this on-site workshop, in order to determine additional scope items
- An on-site portion of the service that covers knowledge transfer or key concepts and considerations to help the customer make informed decisions
- The development of a system-level transition road map and a customer-tailored, high-level, milestone project plan

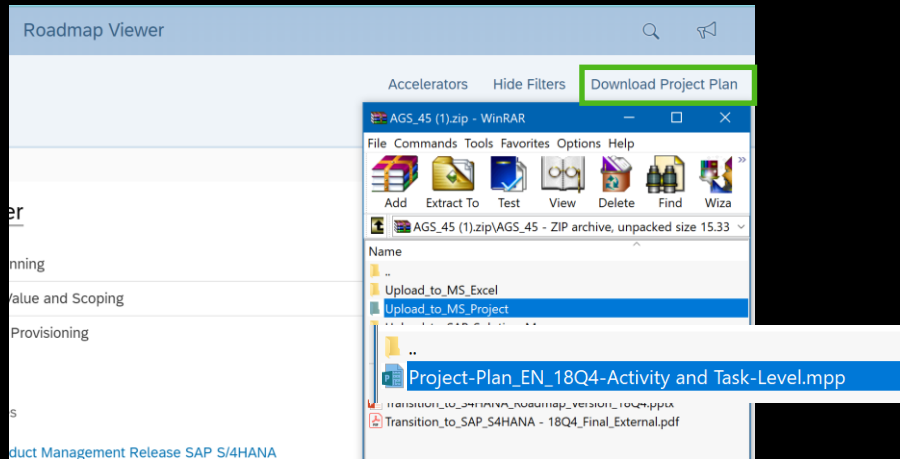
If custom code is a big topic in the respective system and is seen as a high-risk topic, it can make sense to include service components of the custom code management service already in the planning phase.

outcome

preparation

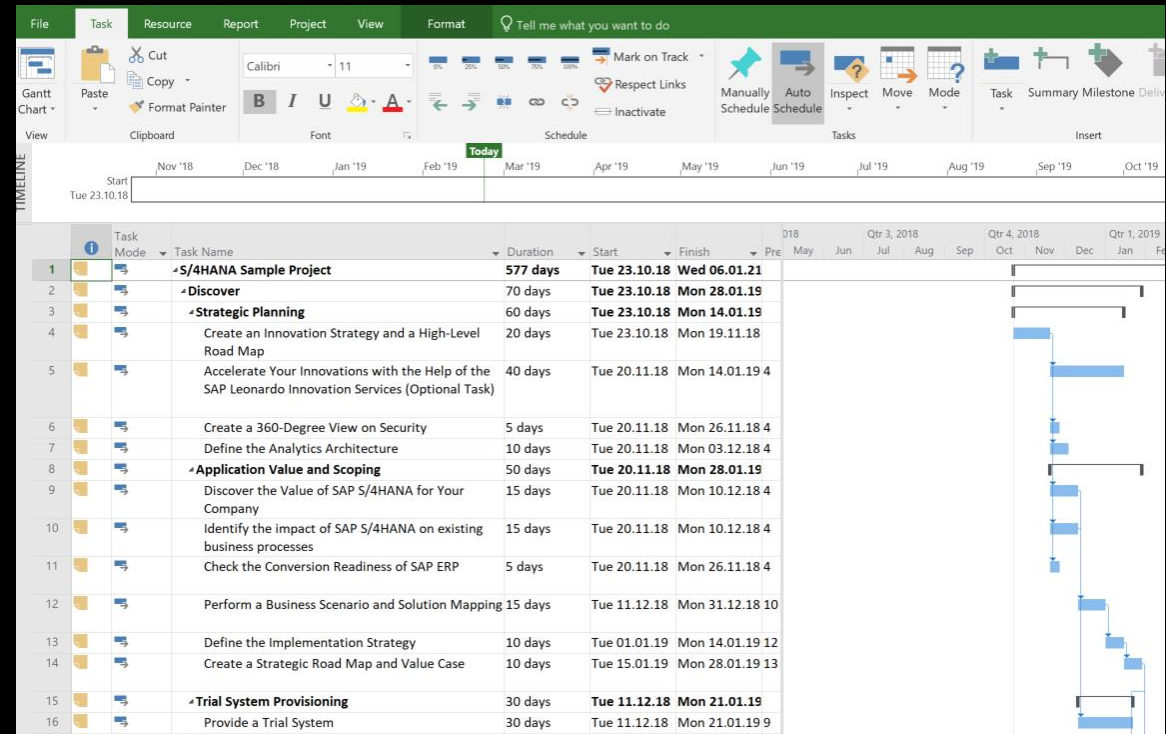
consideration

Work with the Project Plan Templates (1- MS Project)



In the Roadmap Viewer, click „[Download Project Plan](#)“ to download the zip file with the project plan templates and other helpful files.

From the folder „Upload_to_MS_Project“ open the file „Project-Plan_EN_<release>-Activity and Task-Level.mpp“



Work with the Project Plan Templates (1- MS Project)

Download the [Project Plan zip file](#), open the Project Plan for MS Project and add the planned project start date under File>Info>Project Information



Result:

The project end date is calculated automatically and earliest start dates of all tasks and subtasks are set

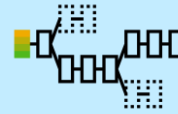
In the Flavors column, open the column header menu and select all checkboxes containing your planned transition scenario



Result:

Only the tasks and subtasks required for your scenario are displayed and all dependencies are re-arranged.

Check which tasks /subtasks are not relevant for your project. Select the line of the respective task/subtask and open the context menu. Choose „Inactivate Task“.



Result:

The selected tasks/subtasks are inactivated and the dependencies are re-arranged.
Note: This inactivation can be reverted, if necessary

Add activities, tasks and planned services.

Adapt the durations of the tasks, where appropriate.

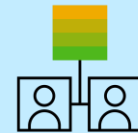


Result:

You align th project plan with the service plan and add reasonable timelines and check the service flow

Assign resources to all subtasks

All tasks/subtasks are explained with the roadmap texts in the notes section (column 1)

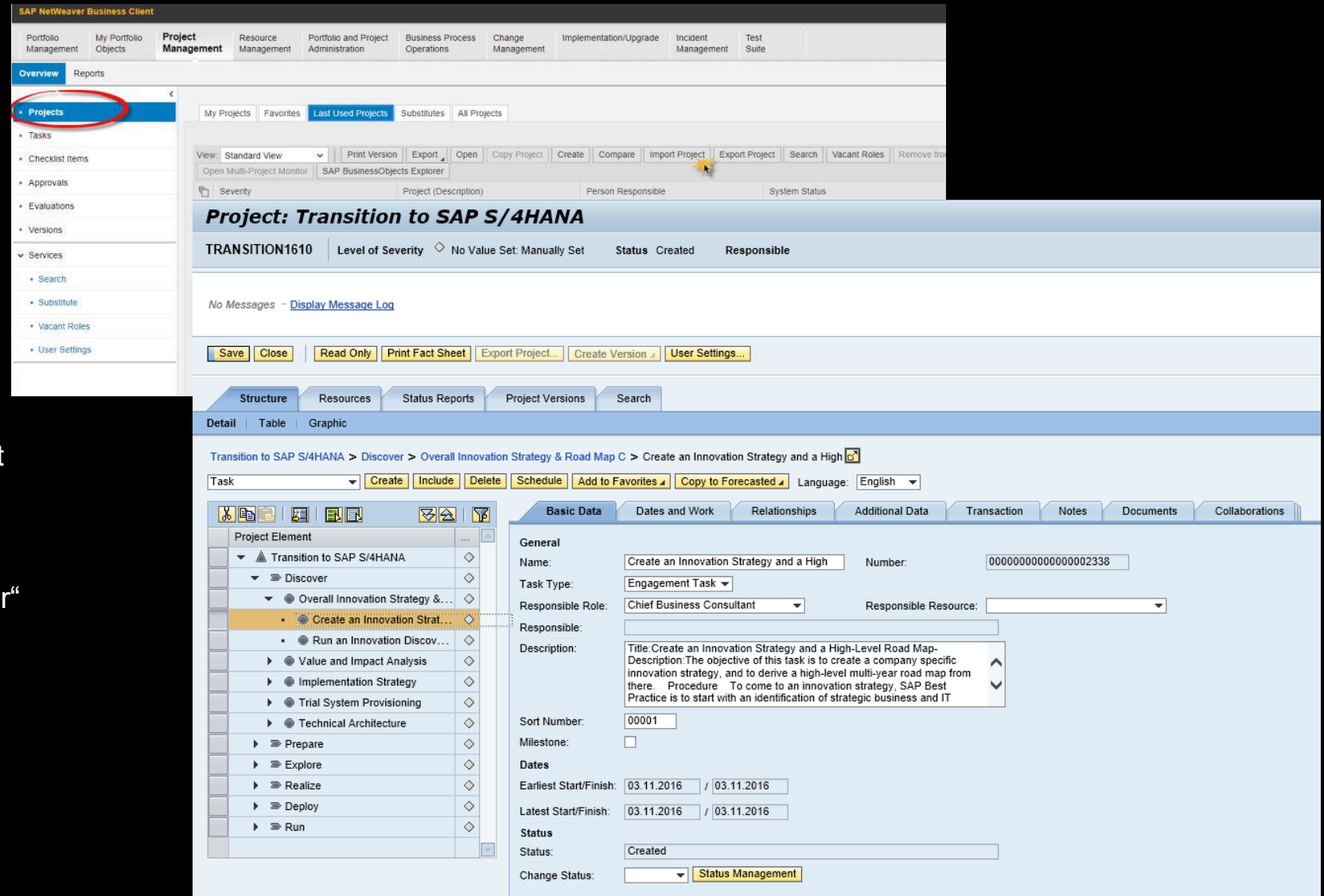
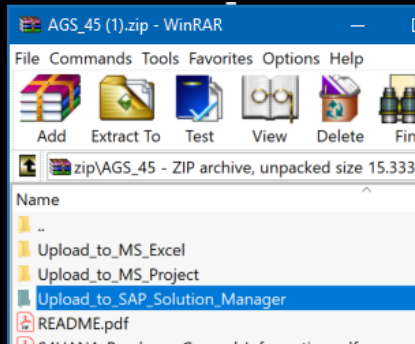


Result:

You can check the availability of the required resources, resource usage and assignment conflicts

		Task Mode	Task Name	Duration	Start	Finish	Predecessors	Workstream	FLAVORS	Services	Resource Names
1			S/4HANA Sample Project	632 days	Mon 04.03.19	Tue 03.08.21					
2			Discover	70 days	Mon 04.03.19	Fri 07.06.19					
3			Strategic Planning	60 days	Mon 04.03.19	Fri 24.05.19		Application: Design & System Conversion, New Implement			
4			Create an Innovation Strategy and a High-Level Road Map	20 days	Mon 04.03.19	Fri 29.03.19		Application: Design & System Conversion, New Configuration	Implementation, Landscape Transformation		

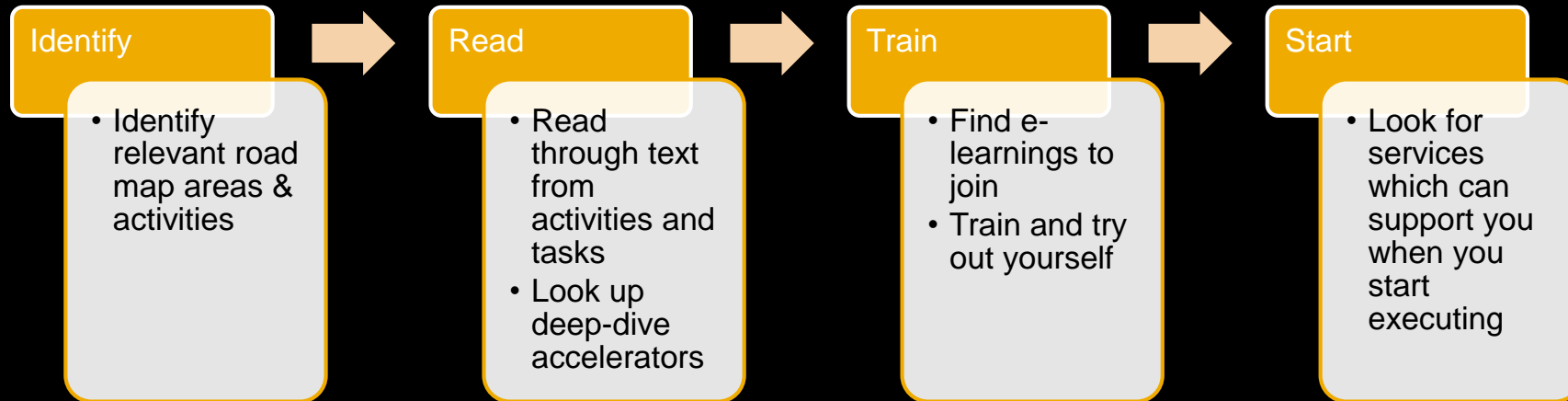
Work with the Project Plan Templates (2- SAP Solution Manager)



To perform the project management in SAP Solution Manager, take the project plan xml file from the download zip folder „Upload_to_SAP_Solution_Manager“ and upload the xml file to SAP Solution Manager IT-PPM.

Check the README.pdf in the download zip for guidance.

Usage Scenarios – How to consume road map content



Usage Scenario: How can I (my company) become familiar with SAP S/4HANA?

Step 1: Identify related road map areas

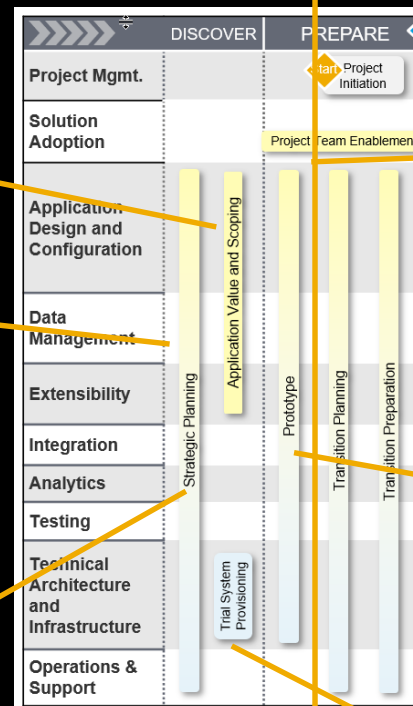
- Discover
- (Prepare)

Step 2: Check out recommended web pages

- Strategic level
- SAP S/4HANA specific
- SAP S/4HANA Movement

Step 3: Consume E-Learning & Tools

- From openSAP
- From SAP Enterprise Support
- SAP Transformation Navigator



Step 4: Book recommended services, e.g.:

- SAP S/4HANA Discovery Workshop
- SAP Adoption Starter
- Innovation Strategy & Roadmap

Step 6: Check company specific

- Prototype / PoC

Step 5: Check out yourself

- SAP Cloud Appliance Library

Usage Scenario: What information is available with regards to preparation steps of a system conversion?

Step 2: Check out recommended web pages on

- Simplification Item Catalog
- Hub Dependency / App Server or HANA Upgrade
- CVI
- Clean up Custom Code and Data
-

Step 1: Identify related road map area

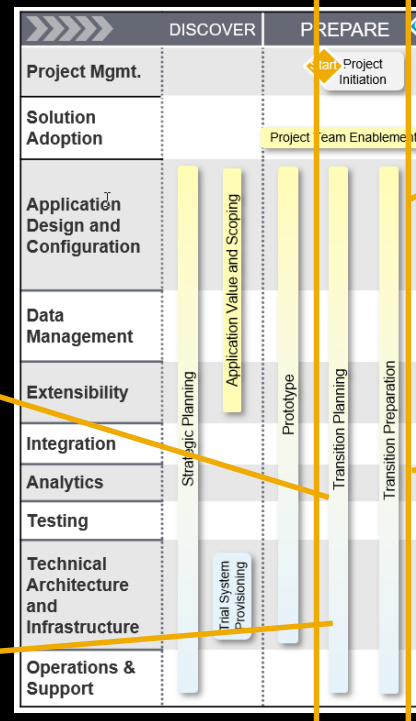
- Transition Planning
- Transition Preparation

Step 4: Book recommended services, e.g.:

- S/4HANA Readiness Check
- E.g. Migration Planning Workshop or equivalent from SAP Enterprise Support
- + recommendations from Planning

Step 3: Consume E-Learning

- From openSAP
- From SAP Enterprise Support



Usage Scenario: How can I make my custom code ready for SAP S/4HANA?

Step 2: Check out recommended web pages on

- Blogs on Custom Code from SAP Product Management
- Custom Code Migration Guide

Step 1: Identify related road map area

- Work Stream “Extensibility” (including Transition Planning)
- Product Enhancements

Step 5: Into the future

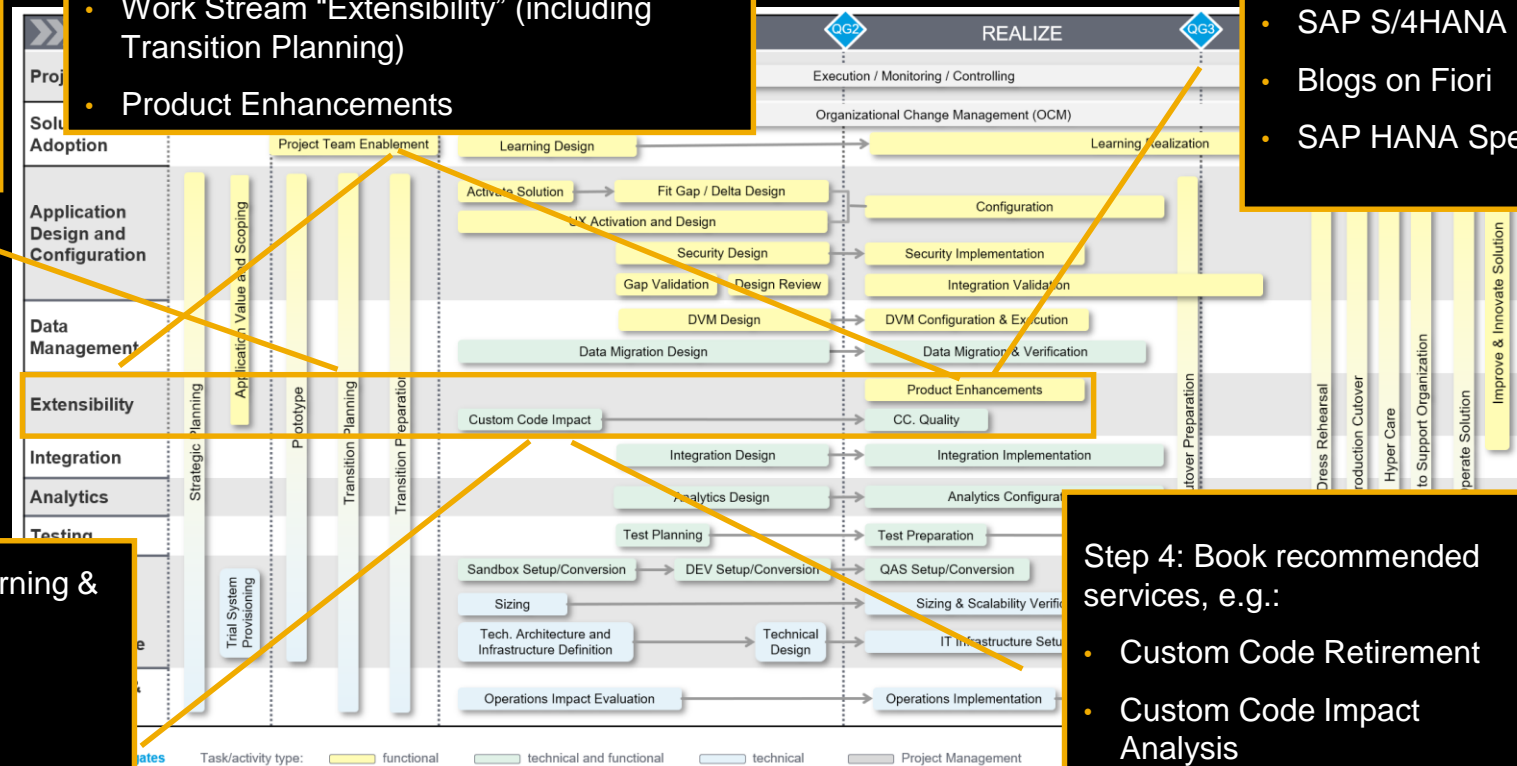
- SAP S/4HANA Extensibility
- Blogs on Fiori
- SAP HANA Specifics

Step 3: Consume E-Learning & Tools

- From SAP Enterprise Support
- UPL
- ATC & Quick Fixes
- SAP Solution Manager

Step 4: Book recommended services, e.g.:

- Custom Code Retirement
- Custom Code Impact Analysis



Example: Information in workstream „Extensibility“

Transition to SAP S/4HANA

Overview

Content

☐ Favorite (0)

Phases

☐ Discover(0)

☐ Prepare(3)

☐ Explore(3)

☐ Realize(7)

☐ Deploy(0)

☐ Run(0)

Clear All

Workstreams

☐ Analytics(11)

☐ Application Design and Configuration(79)

☐ Data Management(44)

☐ Solution Adoption(15)

☐ Project Management(58)

☐ Operations and Support(25)

☒ Extensibility(13)

☐ Testing(8)

☐ Technical Architecture and Infrastructure(29)

☐ Integration(6)

2. Prepare

Transition Planning

Clarify Custom Code Adaption

Transition Preparation

Cleanup Unused Code (Optional Task)

Improve Custom Code Quality Measures (Optional Task)

3. Explore

Custom Code Impact

Empowering on Custom Code Management Tools

Create a Custom Code Work List

4. Realize

Product Enhancements

Development of WICEF objects

Enhancement and development of user interface (e.g. Fiori)

Custom Development

Cutover Preparation

Production System Setup

Create Cutover Plan (System Conversion)

Accelerators

Files

Custom Code Migration Guide for SAP S/4HANA 1809 (Public)

Innovation Control Center (White Paper) (Public)

SAP Value Assurance - Description of Services and Service Components (Public)

Service Information – Custom Code Management (Public)

Service Information – Planning the Digital Transformation (Public)

Web Pages

OpenSAP Training "Software Development on SAP HANA" (Public)

SAP Blog - ABAP custom code adaptation for SAP HANA – The efficient way (Public)

SAP Blog - Remote Code Analysis in ATC – One central check system for multiple systems on various releases (Public)

SAP Blog - Remote Code Analysis in ATC – One central check system for multiple systems on various releases (Public)

SAP Blog - SAP S/4HANA System Conversion – Challenge for your custom code (Public)

SAP Blog - What can you do today to prepare your custom code for SAP S/4HANA (Public)

SAP ES - Guided Custom Code Management for SAP HANA (Public)

SAP ES - SAP HANA (4 of 6) - Make your Custom Code Ready (Public)

SAP ES - SAP S/4HANA: Custom Code Impact Analysis (SAP Customer)

Set up and use of Custom Code Lifecycle Management (Public)

YouTube video – "Custom Code Adaptation for SAP S/4HANA" (Public)

Clarify Custom Code Adaption

Custom code may need to be adapted to work properly with SAP HANA and SAP S/4HANA. This is important:

- In case of a system conversion: Details on the identification of affected code will be given later in the Explore PI Accelerator.
- In case of a new implementation, and the old system is an SAP system where custom code should be transferred, an opportunity to re-evaluate custom coding and SAP modifications, that were required in the past, but that can be avoided.

Requirements and Constraints

This task is relevant in case of a system conversion. It can be relevant for new implementation scenarios, where custom code is used.

Procedure

For system conversion:

- The 4-step sequence to adapt custom code with respect to a system conversion to SAP S/4HANA is shown in the diagram below.

```
graph LR
    1[1. Get transparency on Custom Code] --> 2[2. Remove waste]
    2 --> 3[3. Analyze Impact & Create a plan]
    3 --> 4[4. Adjust Upgrade / EHP specifics]
    4 --> 5[Go back to SAP Standard]
    4 --> 6[Refactoring]
    4 --> 7[BP Re-Design]
    4 --> 8[Adjust HANA specifics]
    4 --> 9[Adjust S/4HANA specifics]
    4 --> 10[Improve Performance]
```

Figure: Preparatory and adjustment steps for custom code in the context of a system conversion

Either executed continuously, or in front of a SAP S/4HANA conversion project:

- Step 1: Get transparency on your custom code situation – The SAP Readiness Check for SAP S/4HANA should be executed, which is sufficient for the high level conversion plan at this point in time

openSAP Training

Blogs

Videos

Enterprise Support Academy

Service Offerings...

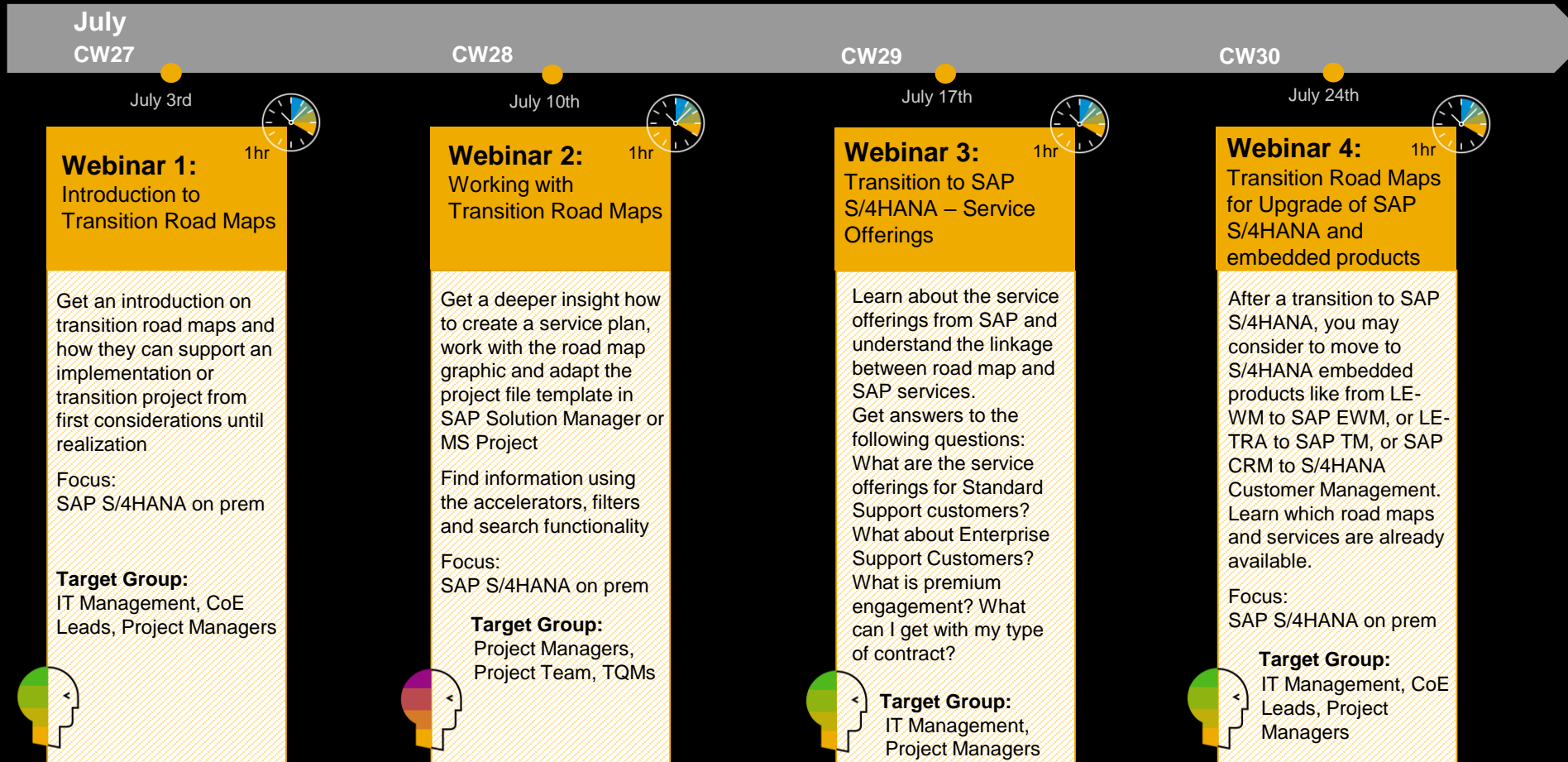
© 2019 SAP SE or an SAP affiliate company. All rights reserved. | PUBLIC

18

Summary

- You have learned how to adapt the roadmap graphic to reflect your planned project
- You can now work with the project plan template
- You now know how to answer your transformation questions

Webinar Series



Thank you.

Contact information:

Dr. Christoph Nake

Chief Support Engineer

christoph.nake@sap.com

Dr. Astrid Tschense

Expert Support Engineer

astrid.tschense@sap.com

Follow us



www.sap.com/contactsap

© 2019 SAP SE or an SAP affiliate company. All rights reserved.

No part of this publication may be reproduced or transmitted in any form or for any purpose without the express permission of SAP SE or an SAP affiliate company.

The information contained herein may be changed without prior notice. Some software products marketed by SAP SE and its distributors contain proprietary software components of other software vendors. National product specifications may vary.

These materials are provided by SAP SE or an SAP affiliate company for informational purposes only, without representation or warranty of any kind, and SAP or its affiliated companies shall not be liable for errors or omissions with respect to the materials. The only warranties for SAP or SAP affiliate company products and services are those that are set forth in the express warranty statements accompanying such products and services, if any. Nothing herein should be construed as constituting an additional warranty.

In particular, SAP SE or its affiliated companies have no obligation to pursue any course of business outlined in this document or any related presentation, or to develop or release any functionality mentioned therein. This document, or any related presentation, and SAP SE's or its affiliated companies' strategy and possible future developments, products, and/or platforms, directions, and functionality are all subject to change and may be changed by SAP SE or its affiliated companies at any time for any reason without notice. The information in this document is not a commitment, promise, or legal obligation to deliver any material, code, or functionality. All forward-looking statements are subject to various risks and uncertainties that could cause actual results to differ materially from expectations. Readers are cautioned not to place undue reliance on these forward-looking statements, and they should not be relied upon in making purchasing decisions.

SAP and other SAP products and services mentioned herein as well as their respective logos are trademarks or registered trademarks of SAP SE (or an SAP affiliate company) in Germany and other countries. All other product and service names mentioned are the trademarks of their respective companies.

See www.sap.com/copyright for additional trademark information and notices.