



The Future of Life Sciences with AI

30 October 2025



Kathryn Thompson

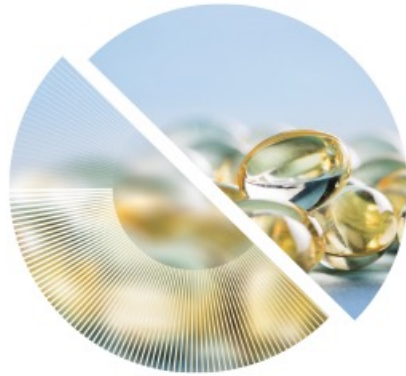
Life Sciences and Healthcare Industry Lead Partner,
Deloitte Consulting, UK

Deloitte's Life Sciences & Healthcare Predictions 2030

Deloitte.



Consumers are the CEO of their own health



The rise of a dynamic consumer health market



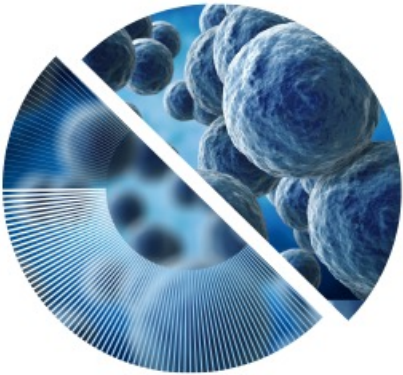
Intelligent healthcare and the democratisation of health data



Climate resilience and sustainable healthcare systems



Convergence of AI technologies and human expertise in pharma R&D



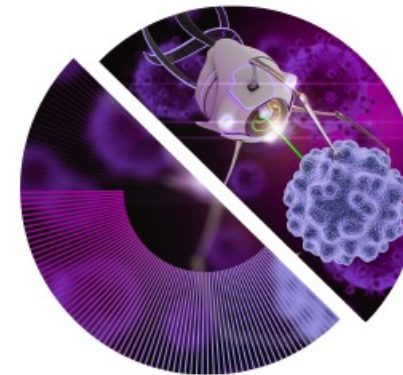
Interdependent innovations in science and technology



The convergence of health, wealth and longevity services



End-to-end transformation of commercial activities



Realising the potential of the Internet of Medical Things



M&A, divestments and restructuring

The convergence of AI technologies and human expertise in pharma R&D

Accelerating value for companies and quicker innovations for patients



By 2030, biopharma R&D utilises **E2E digitalisation, AI, and patient-centric technologies** to enhance productivity. **Strategic partnerships** and innovative funding models, has led to faster delivery of groundbreaking therapies, increasing the return on investment in **biopharma innovation**.

INSIGHT

Digital twins can reduce the need for clinical trial enrolment by between 25% and 50%, reducing clinical development time and costs.

ACCELERATED BY AI



Streamlining clinical trials with AI-powered documentation, optimised trial design and recruitment, and automated data analysis



Real-time clinical trial monitoring and digital twin technology



Using AI for drug modelling, identifying promising candidates and enabling drug repurposing

Climate resilience and sustainable healthcare systems

Collaborating to measure and deliver environmental excellence



By 2030, LSHC sectors are proactively tackling the climate crisis through mature ESG strategies, leveraging **digitally-enabled care models** like telehealth to reduce environmental footprints and prioritising sustainable supply chains with **AI-driven logistics**. They are transitioning to renewable energy and circular economy principles, using science-based targets and net-zero goals to enhance environmental performance and minimise waste. Stakeholders use 'climate smart' thinking with unprecedented levels of **collaboration and innovation** to improve their impact on climate change, strengthening trust and boosting talent attraction and retention.

INSIGHT

Vithas is the first private hospital group in Spain that is carbon neutral in electricity and natural gas consumption. Its measure have reduced energy consumption by 114.8% and annual CO₂ emissions by 27.6%

ACCELERATED BY AI



Proactively identifying energy and waste hotspots, optimising energy consumption, and enhancing supply chain management



Streamlining clinical trials, facilitating remote monitoring, and reducing the need for travel



Optimising resource allocation and personalising treatment plans

End-to-end transformation of pharma's commercial activities

Customer-centric, platform-based, commercial models have enhanced productivity and customer experience



By 2030, pharma's commercial operations are **fully digital**, leveraging AI, cloud, and CRM systems to deliver a customer-centric approach. This enables **personalised marketing and improved customer experiences**. AI-powered CRMs and real-world data (RWD) facilitate early and effective patient engagement, while dedicated customer relationship teams deliver **tailored, omnichannel campaigns**, prioritising the patient experience.

INSIGHT

Teva Pharmaceuticals achieved RT integration between SAP and Salesforce to foster a streamlined sales and ordering process. Custom Metadata Types were created to address the complexity of different business processes in different countries enabling scalability while adapting to changing market demands.

ACCELERATED BY AI



AI-powered analysis of patient data to personalise marketing



Identifying potential drug safety signals, enabling enhanced pharmacovigilance



Adoption of data-driven incentive structures, and a shift towards value-based pricing models

Accelerating the future

Deloitte's Life Sciences & Healthcare predictions for 2030



Convergence of AI technologies and human expertise in pharma R&D



Climate resilience and sustainable healthcare systems



End-to-end transformation of pharma's commercial activities



Deloitte's 2030 Life Sciences & Healthcare Predictions