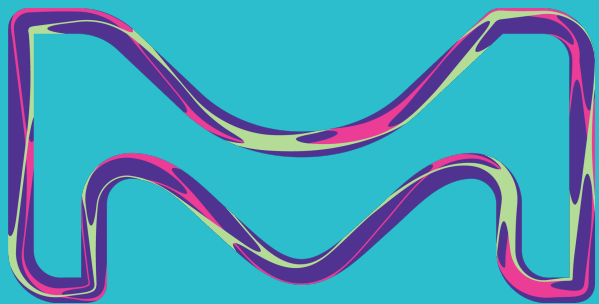




Digital Transformation - Building the Foundation for AI

October 31st, 2025

Andreas Bargon, HealthCare ERP Business
Partner & Architecture Lead



MERCK

Table of Contents

- 01 Merck Key Figures at a Glance
- 02 Merck Strategic Goals & Long-Term ERP Strategy
- 03 Merck & SAP Strategic Partnership
- 04 Building the Foundation for AI – RISE
- 05 Building the Foundation for AI – Clean Core
- 06 Building the Foundation for AI – MaxAttention
- 07 Challenges and Considerations
- 08 Q&A

Merck Key Figures at a Glance

Figures 2024

AT A GLANCE

A strong team


62,557
employees


142
nationalities


39%
women in leadership positions

Life Science
Together, we impact life and health with science.



Share of net sales
42%

Share of EBITDA pre
39%

Healthcare
We help to create, improve and prolong lives.



Share of net sales
40%

Share of EBITDA pre
46%

Electronics
We are advancing digital living.

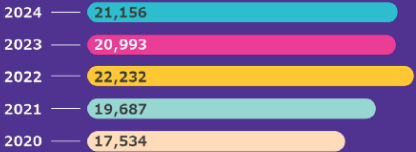


Share of net sales
18%

Share of EBITDA pre
15%

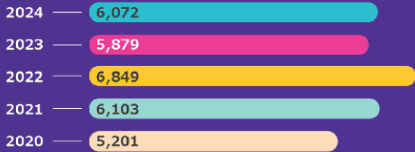
Merck Group

Net sales
€ million



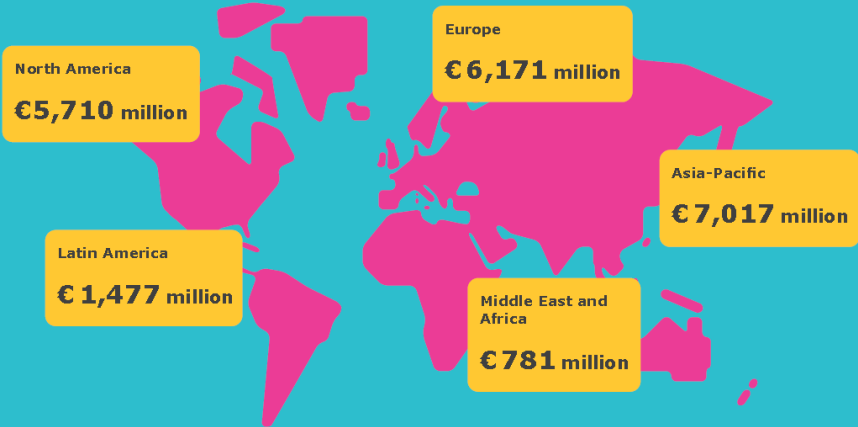
Merck Group

EBITDA pre¹
€ million



¹ Not defined by International Financial Reporting Standards (IFRS).

Net sales per region



Merck Strategic Goals

Mobilize for Growth

Enterprise Strategy

Mobilize for Growth

Enterprise Priorities



**Performance &
Efficient Growth**

**Think &
Act Sustainably**

**Innovation Powered
by Data & Digital**

**High-Impact Culture
and Leadership**

IT Ambition

We want to be recognized as **the partner of choice** for

DIGITAL TECHNOLOGY ENABLEMENT

support company growth at scale in an effective and efficient way.

IT Strategic Pillars

**Effective IT
Operating Model**

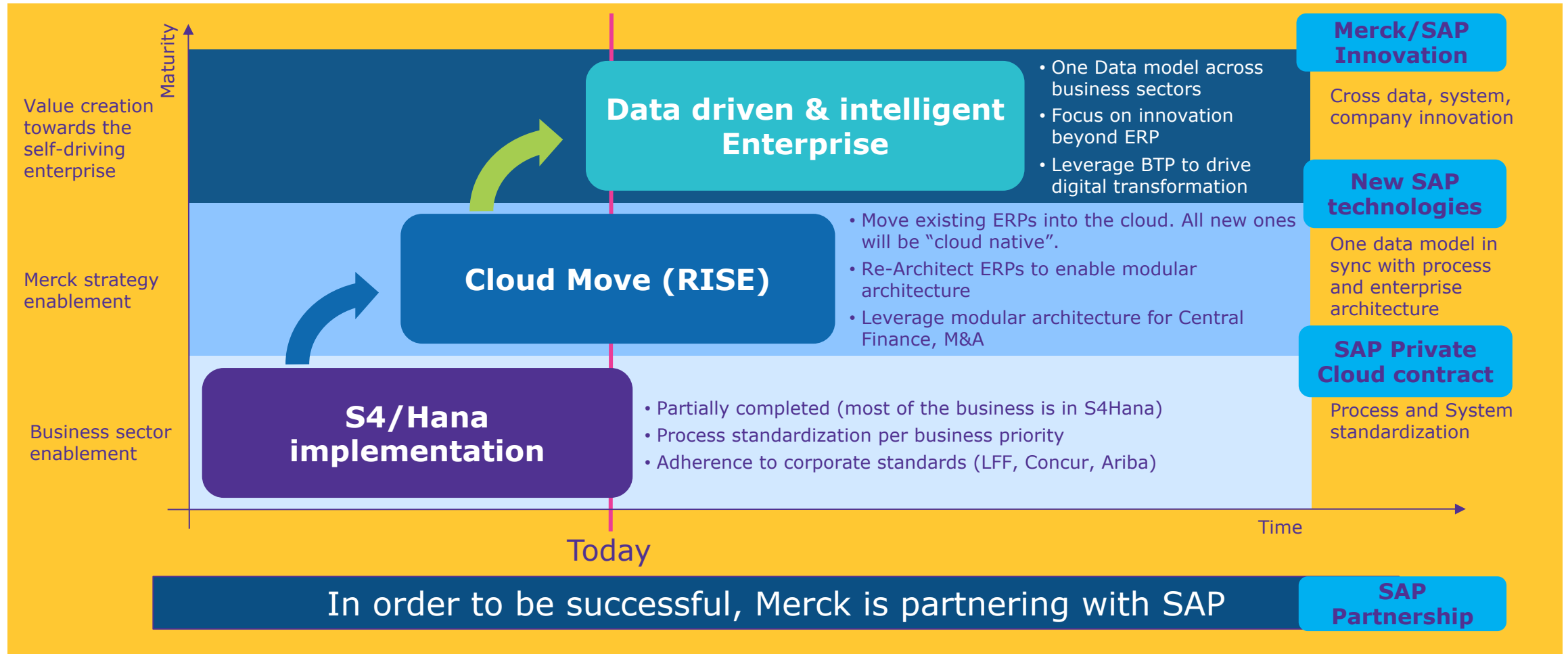
**Improve
Operations**

**Leading
Technology**

**People and
Culture**

Long Term ERP Strategy – Truly Business Enabling

Our long-term ERP strategy is setup to enable business strategy, while evolving towards a clean, modern architecture



STRATEGIC Partnership



MERCK and **SAP**
engaged in a strategic
partnership that will enable to
further accelerate our
Digital Transformation
and support achieving our
business goals

1

Move SAP
Landscape to SAP
Cloud

2

Accelerate use of
SAP technologies
beyond ERP

3

Design & drive
future industry
standard together
via Co-Innovate

4

Implement the
data driven and
intelligent
enterprise

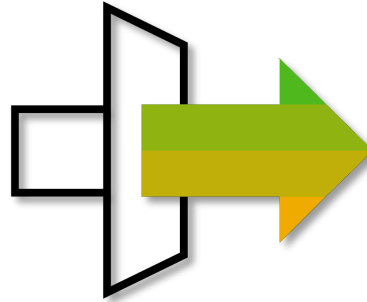


Building the Foundation for AI

Building the Foundation for AI – RISE

Cloud Move Scope

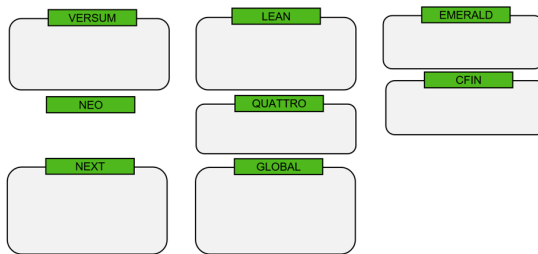
SAP systems onPremise



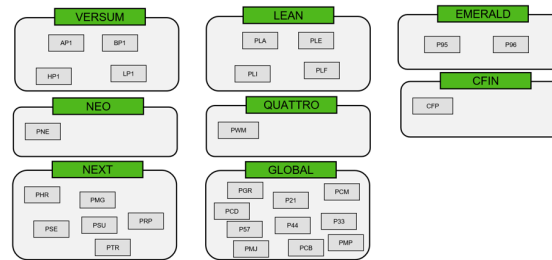
SAP Private Cloud Services



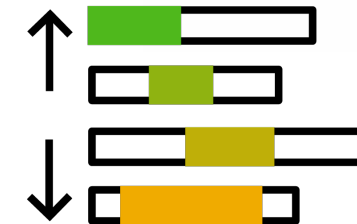
8 Solution Areas



29 Productive Systems



159 Transitions (*)



(*) SANDBOX, DEV, TEST, QA, PROD

Out of Scope

- Cloud Migration of NON-SAP Systems
- Merck Legacy SAP Systems

Building the Foundation for AI

Operating model in the private cloud environment

Past Operating Model



Operating Model in the SAP Private Cloud



Building the Foundation for AI – RISE

RISE Benefits

Functional differentiators

- Certain **SAP innovations** are **exclusively made available to RISE customers**: e.g.
 - Generative AI business use cases, personal assistant Joule etc.
 - Green ledger capabilities (apply financial principles and qualities of double entry bookkeeping to carbon emissions)
 - Co-innovation (new co-innovations will focus on S/4HANA Cloud customers)
- **Clean core dashboard** to enable clean core strategy: helps organizations to use the latest release, minimize or eliminate modifications, and run with cloud-compliant extensions and customizations
- Becoming **innovation-ready** due to always on the latest release

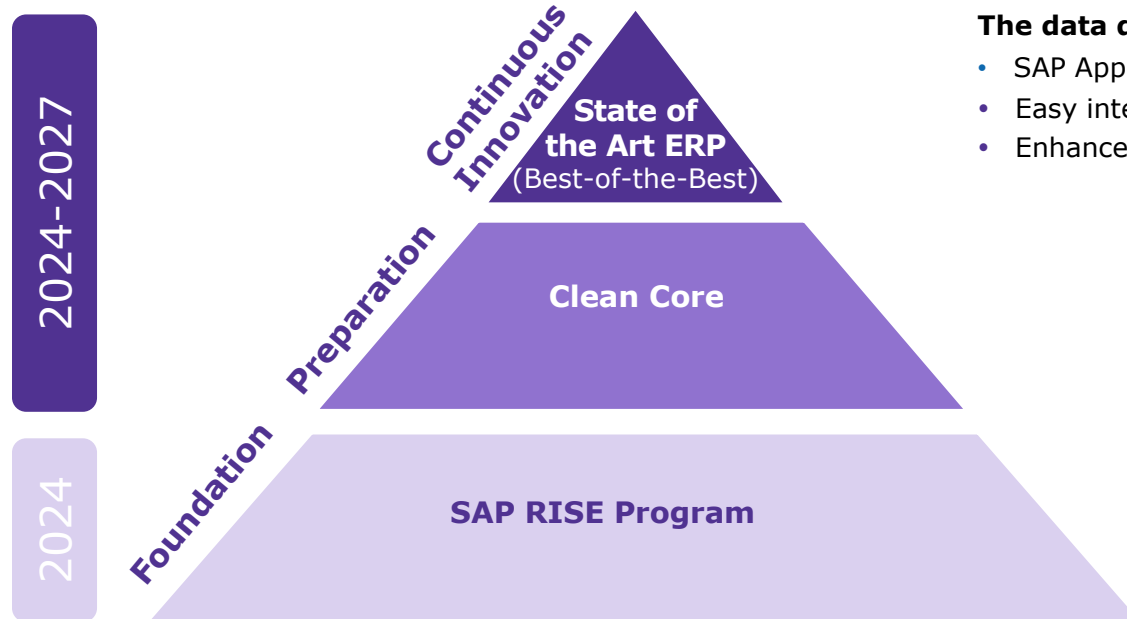
Commercial differentiators

- **Cloud-based consumption model** (CAPEX to OPEX)
- Overall simplification due to **ONE single contract**
- Enterprise-wide **flexible agreement** (commit-to-consume):
 - Risk sharing between SAP templates regarding committed contract volume
 - Flexibility in project speed between SAP template role outs
- **Termination** of on prem Software licences including elimination of maintenance costs
- Eliminate **shelfware** and right-size future landscape (incl user optimization – Full usage equivalent FuE)
- Eliminate **hyperscale overprovisioning**

- **New maturity level achieved for full SAP stack architecture and clear responsibilities**
- **Scalability & agility by avoiding the bottleneck of internal Merck Teams**
- **Industry Security Standards delivered by SAP and AWS**
- **Rigidity for Application LifeCycle Management**

Building the Foundation for AI – Clean Core

FREE ERP - Future Ready Enterprise Enablement



The data driven and intelligent enterprise

- SAP Applications with embedded AI: Sigantvio, Joule, WalkMe, SAP Build ...
- Easy integration of Gen. AI in custom enhancements: e.g. Merck Duplicate Invoice Check
- Enhanced leverage of BTP for Innovations

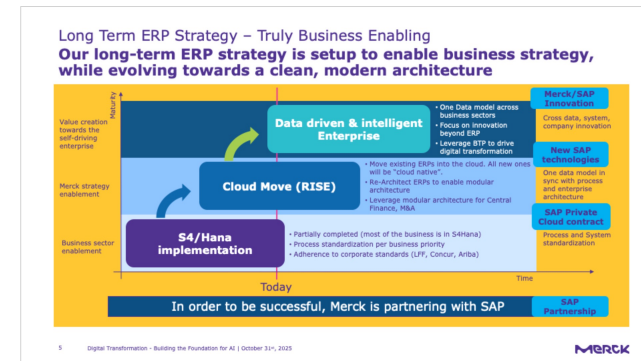
FREE ERP - Future Ready Enterprise Enablement: Project to adapt ERP to new innovations

- ERP Clean Core program to clean-up technical debt and to use modern ways to extend the Core for new requirements
- Signavio for improving Business Processes and Bus. KPIs
- Tools for Monitoring the ERP ecosystem, such as Cloud ALM

Setting the foundation

- Upgrade ERP to a recent version to be more mature in the Application LifeCycle Management.
- Move to Cloud: Only SAP RISE customer will be enabled with latest SAP innovations

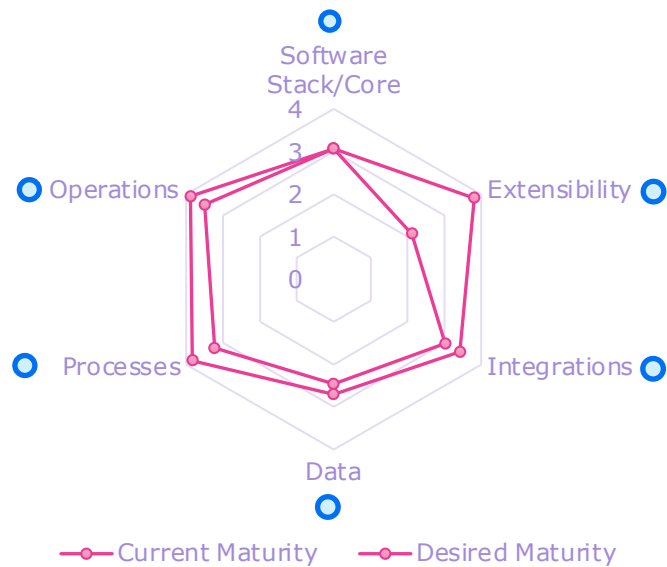
SAP Clean Core is a **mindset and methodology** supported with **governance and guiding principles** that lays foundation for a flexible and future-ready ERP



Building the Foundation for AI – Clean Core

Clean Core? Where to put the focus ?

Maturity on Clean Core Dimensions

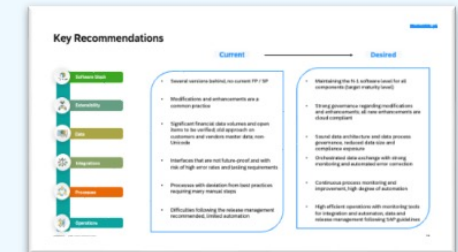


Key Observations

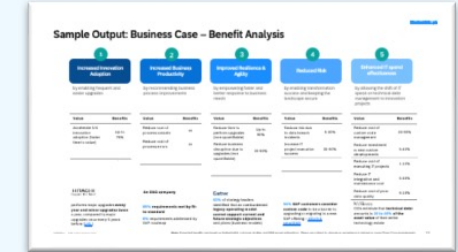
- Software Stack:**
 - Core software has been upgraded in 2024, major upgrades every 3 years
 - Faster upgrade Cycles currently not envisioned / aligned so far
- Operations:**
 - System Monitoring capabilities to be improved
 - Test automation initiatives were not so successful so far
- Extensions:**
 - Technical debt of >35 k Custom objects
 - OCM to implement Clean Core Guidelines and Governance
- Integrations:**
 - Point-to-point integrations via PIPO
 - Roadmap for the BTP Integration Suite?
- Processes:**
 - Current Template Processes vs SAP Standard
 - Usage of Signavio will bring improvements
- Data:**
 - Good maturity and Governance for Materials
 - Other objects such as Suppliers, Customers etc. have room for improvement

Strategic value roadmap including a path to a clean core:

Recommendations



Business Case



Roadmap



Building the Foundation for AI – Clean Core

Extensibility - OCM to implement Clean Core Guidelines and Governance

Past

- ERP Change Request Management (**CR**) as per current procedures
- **GAP** Assessment and implementation are part of Deployment Project.
- **Practicing Clean Core procedures are not in place**

Future

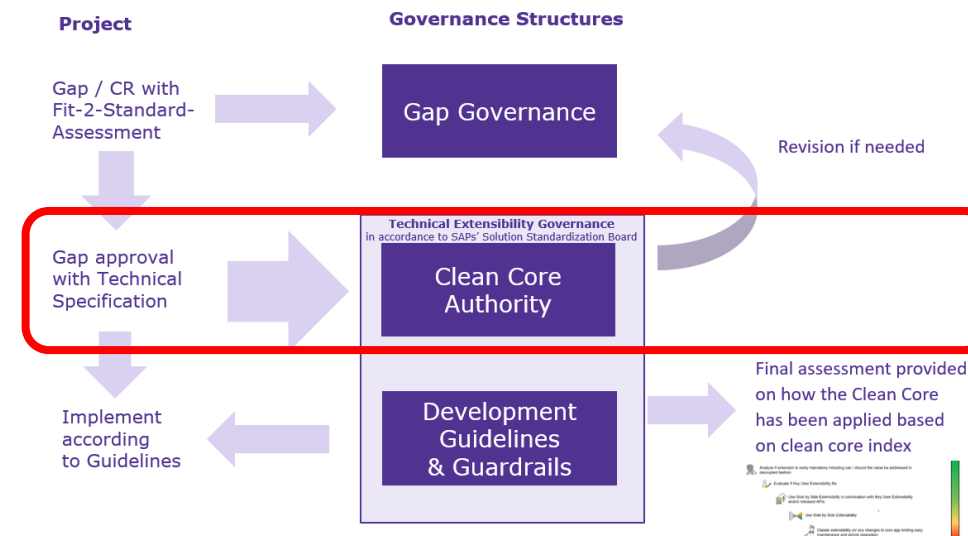
- ✓ **Governance and Clean Core Principles in place and applied**
- ✓ **ERP CRs and GAPs are reviewed against the Clean Core Principles.**

! Clean core is the IT prerequisite to be able to technically **respond to business change** in an agile way.

! The clean core strategy enables the adoption of **new technologies..**

! For all sectors, implementing ERP, Clean Core is relevant to prevent **extensive process complexity.**

Clean core governance within an ERP project & CRs



Building the Foundation for AI – Clean Core

Success Factor Organizational Change Management

- ✓ Clarify Accountabilities
- ✓ Communication strategy to “broadcast” the Architectural principles to all stakeholders
- ✓ Training Concept
 - Common Understanding of the Clean Core Principles within programs: PMO and Business Architect
 - Upskilling of the Developers: to specific clean core extensibility guidelines (incl. external onboarding)
- ✓ Guidance from Clean Core Authority
 - Build One Repository for Clean Core to find all related Guidelines & Guardrail
- ✓ Incentivize Stakeholders
 - Incentivize System Integrators

Dimension	IT Leadership	X-Sector BTP	IT Operations	Sector			
				CoE	Process Arch	Program Mgmt. /Project	Data Office
1 Business Processes				C	A, R	R	
2 Extensibility	I	A, R	I	R	C	R	
3 Data			C	C	C	R	A
4 Integration		A, R		I	I	R	
5 Operations	I	R	A, R	R			
Methodology / Best Practice	A	R	C	R	C	R	

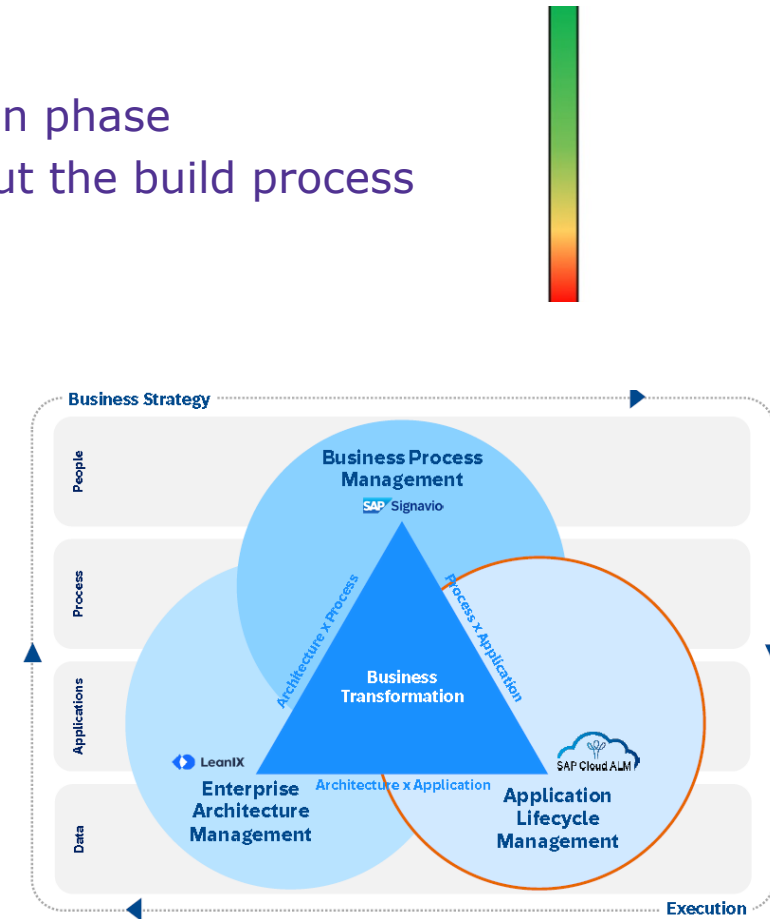
Building the Foundation for AI – Clean Core

Success Factor Monitoring and Tooling concept

- ✓ Define 'SMART'* Clean Core KPIs to check:
 - Transparent and conscious decision are taken at design phase
 - Finally design decisions consistently applied throughout the build process

* S(pecific), M(easurable), A(cepted), R(ealistic), T(imed)

- ✓ Additional Tooling to track Clean Core
 - GEAR (LeanIX) for architectural topics
 - SAP Signavio for Process Monitoring
 - SAP Cloud ALM for Application Life-Cycle Mgmt.
 - Monitoring Extensibility Domain. e.g.
 - ICCM Report
 - Clean Core Dashboard
 - ATC (Abap Test Cockpit)
 - ...



Building the Foundation for AI – Max Attention

SAP MaxAttention ensures the highest level of strategic engagement to drive success



1 SAP Value Assurance

A **short-term engagement** to accelerate and safeguard solution deployments that includes:

- A single purpose engagement with a defined scope and expiration date
- Access to the full expert services portfolio
- A TQM as required

2 SAP ActiveAttention

A **long-term engagement** for customers that includes:

- A programmatic approach supporting your business transformation end-to-end
- Access to the full expert services portfolio and additional service level obligations
- A TQM fully embedded in your customer's organization

3

SAP MaxAttention

A **long-term strategic partnership** for large-scale transformations that includes:

- An enterprise architect to guide the Suite transformation
- The North Star architecture service to deliver an SAP-endorsed architecture roadmap
- Access to the full expert services portfolio and additional service level obligations
- A senior lead-TQM embedded in your customer's organization
- Senior management sponsorship and access to SAP development experts

Business Scenarios: proven solution blueprints tailored to the business needs



Building the Foundation for AI – Max Attention

SAP MaxAttention brings out the best in your company-wide transformation



Unique premium experience

Gain a unique premium experience with maximum visibility and priority within SAP and enhance your business with SAP Business Suite and SAP Business AI

Strategic Partnership

Take advantage of a holistic multi-year strategic partnership providing advisory and guidance to drive your business transformation across SAP applications, SAP Business Data Cloud and SAP Business AI

Personalized expert services

Benefit from customized, focused attention and personalized expert services driven by AI - based innovation and best practices

Dedicated team

Work closely with a dedicated team to maximize your investment in SAP solutions and SAP applications powered by SAP Business Technology Platform

High-quality interactions

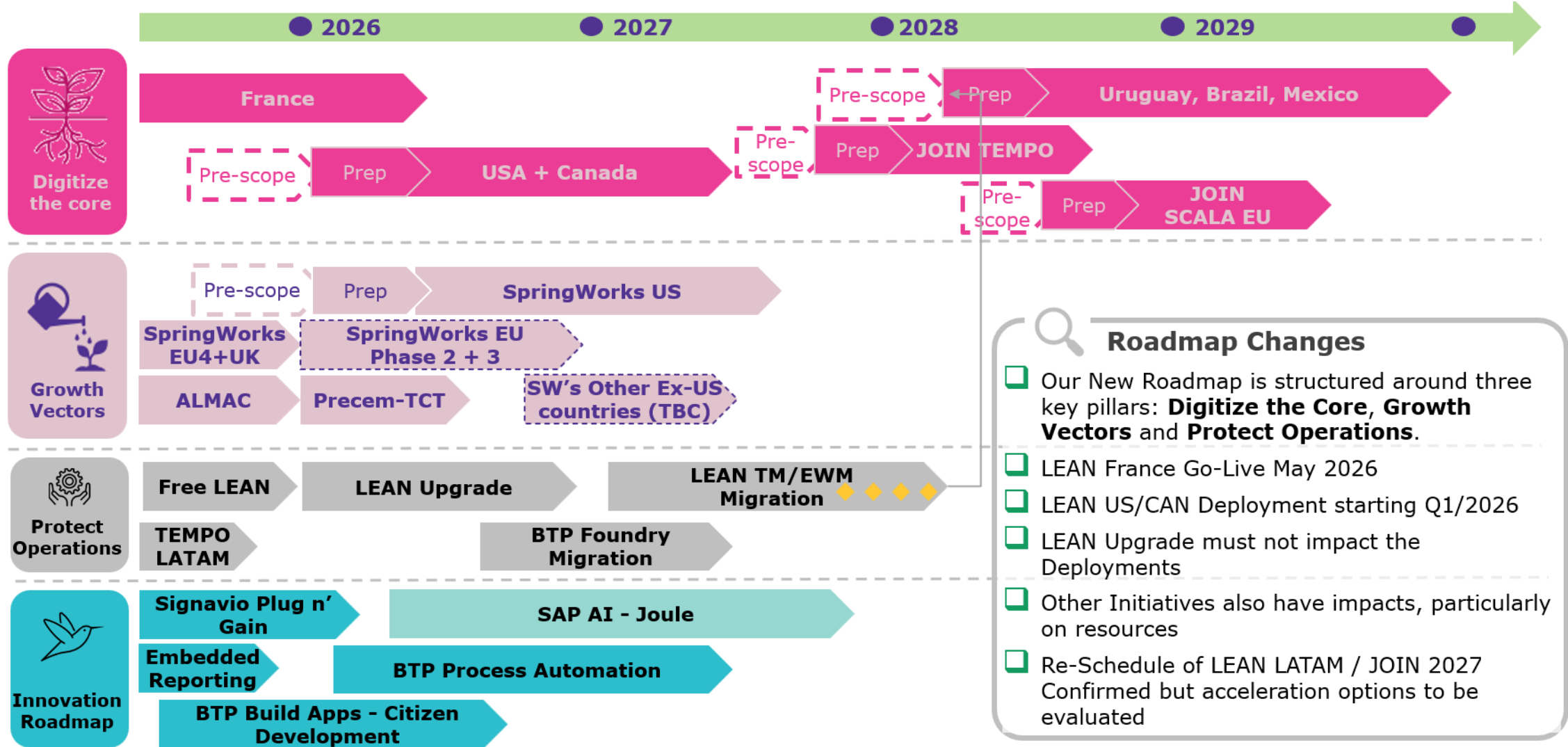
For an enhanced strategy, foster your support for tailored Suite and AI scenarios developed by SAP, clients, or partners



Challenges and Considerations

Challenges and Considerations

Healthcare ERP | Roadmap: Outlook beyond 2027



Challenges and Considerations

Some concrete Examples

- Application LifeCycle Management
 - Technical Upgrades need to be incorporated into the Deployment Roadmap leading to resource conflicts
 - Increasing the upgrade frequency by making an upgrade a “non-event” is challenging (due to technical debt and Satellites compatibility)
 - Business is not directly seeing the value of upgrades and a full-blown value assessment requires much effort
- Architectural Design
 - Moving EWM/TM and SCM/APO from side-car concept into S4H embedded
 - Improving SAP Tool-Chain Integration (LeanIX, Signavio, Cloud ALM)
 - LeanIX manual data entry versus automatic discovery
 - Signavio Process Modeling for existing ERP Template
 - Cloud ALM for Requirements Management & Testing, Test Automation
- FREE LEAN (Merck HealthCare’s Clean Core Initiative)
 - Advisory around Intelligent Custom Code Management and related Clean-up Activities
 - FIORI Activation and Adoption (Customizations blocking usage of Standard FIORIs, Training)
 - Build-Apps & Citizen Development
- Strategical Roadmap
 - BTP Adoption and Maturity
 - AI Adoption
 - ...

Challenges and Considerations

Final Call for Action: Building the Foundation for AI with Clean Core ?



A resilient business needs a technology foundation that enables them to:

- *Embrace Change*
- *Operate at Pace*
- *Protect the Core*

In an intelligent and effective manner



Andreas Bargon

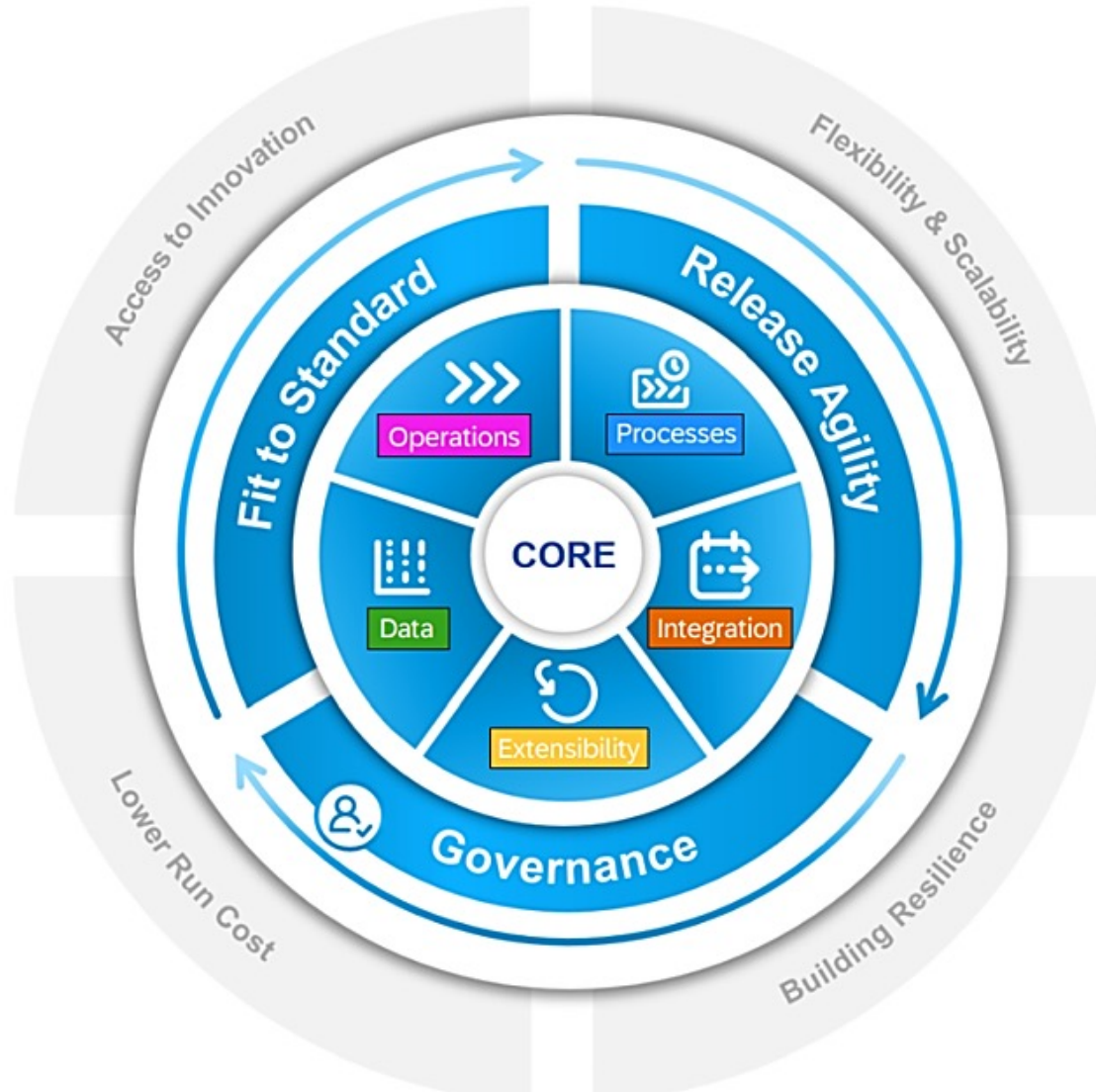
Merck KGaA
HealthCare ERP Business Partner &
Architecture Lead

Mail: andreas.bargon@merckgroup.com

Thank You !

Building the Foundation for AI

What is Clean Core?



SAP Clean Core is a **mindset and methodology** supported with **governance and guiding principles** that lays foundation for a flexible and future-ready ERP

Keep **competitiveness** while **reducing complexity**.

1

Business Processes

Decouple extensions from standard.

2

Extensibility

Control data according to **latest standards**.

3

Data

Keep the landscape **reliable and flexible**.

4

Integration

Keep the operations **effective and efficient**.

5

Operations