



Embed & Operate ML Scenarios for your Intelligent Enterprise

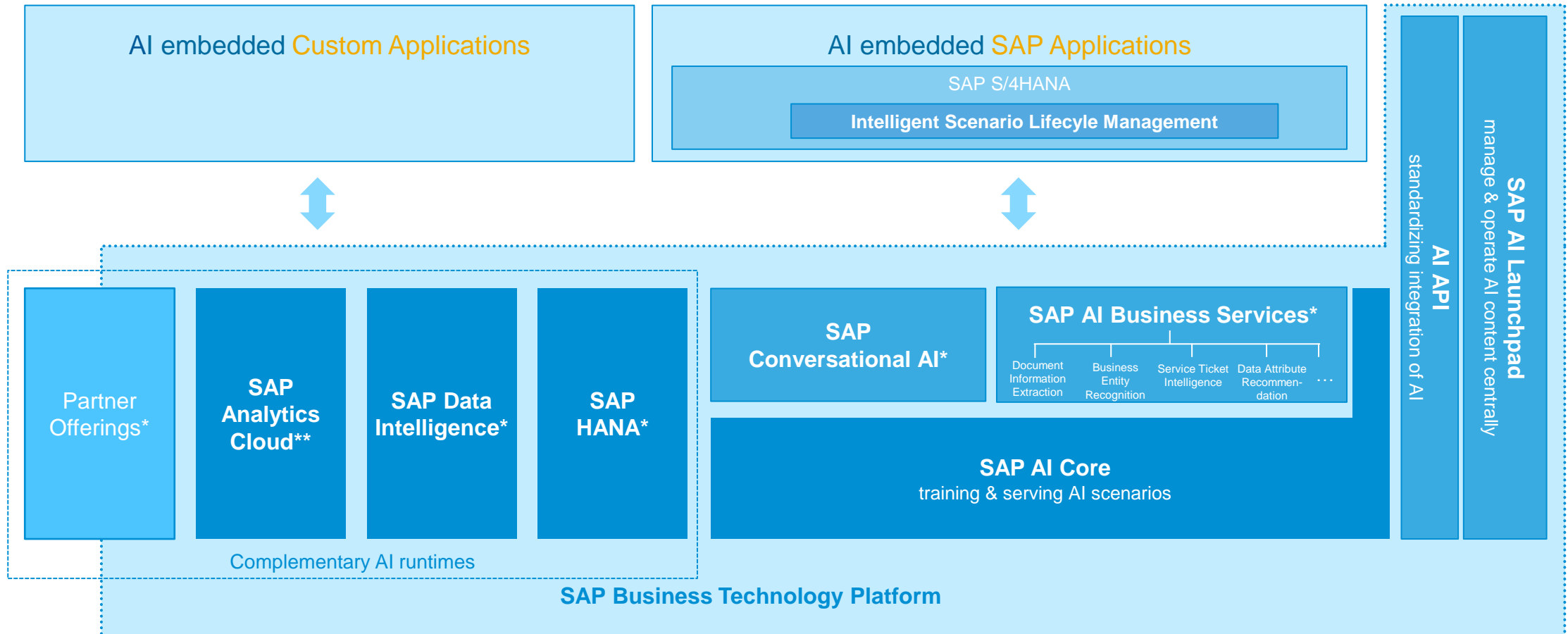
Priti Dhingra, SAP
Ramya Devarajan, SAP
Month 00, 2023

CUSTOMER

Agenda

- SAP AI Technology Portfolio
- Motivation: Standardized integration and operation of machine learning scenarios with SAP S/4HANA
- Intelligent scenario lifecycle management (ISLM)
 - ML operations with & without ISLM
 - Standardized integration of AI in SAP S/4HANA with ISLM
- Demo
- Further information about ISLM

SAP AI Technology Portfolio



* Support for AI API and SAP AI Launchpad is planned for the future
 ** No integration with AI API and SAP AI Launchpad

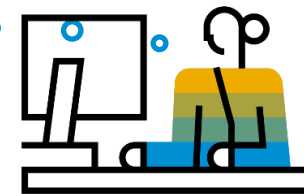
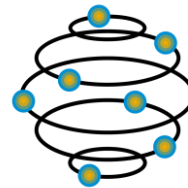
Intelligent business applications: Initial adoption & ML Ops

Does my system meet prerequisites to run SAP delivered intelligent scenarios?

How can I get started with SAP delivered ML scenarios?

How can I trigger, control, and monitor the model training?

How can I have a better control over productive usage?



Shipping Condition	Planned Delivery Date	Delivery Status	Purchase Order	Purchase Order Item	Purchase Order Quantity	Material	Releasing Plant
100	07/02/2017	Open	410000001	10	10,000 PC	Training Coat (2000010)	Plant 1 DE FGO (P702)
100	07/02/2017	Completed	410000002	10	10,000 PC	Training Coat (2000010)	Plant 1 DE FGO (P702)
100	07/02/2017	Open	410000003	10	10,000 PC	Training Coat (2000010)	Plant 1 DE FGO (P702)
100	07/02/2017	Open	410000004	10	10,000 PC	Training Coat (2000010)	Plant 1 DE FGO (P702)
100	07/02/2017	Completed	410000005	10	10,000 PC	Training Coat (2000010)	Plant 1 DE FGO (P702)

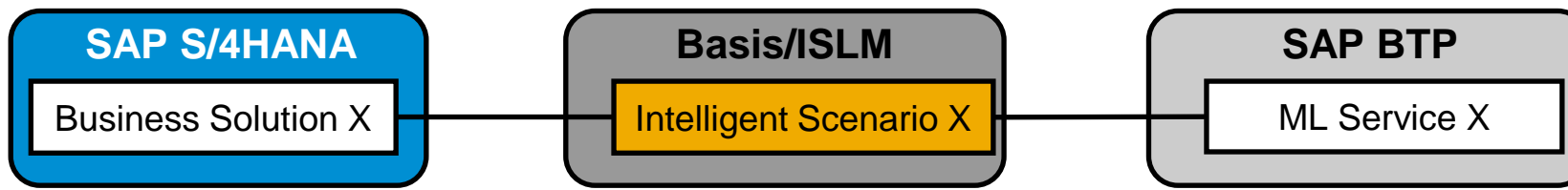
Train, monitor, set active . . .

Business Administrator

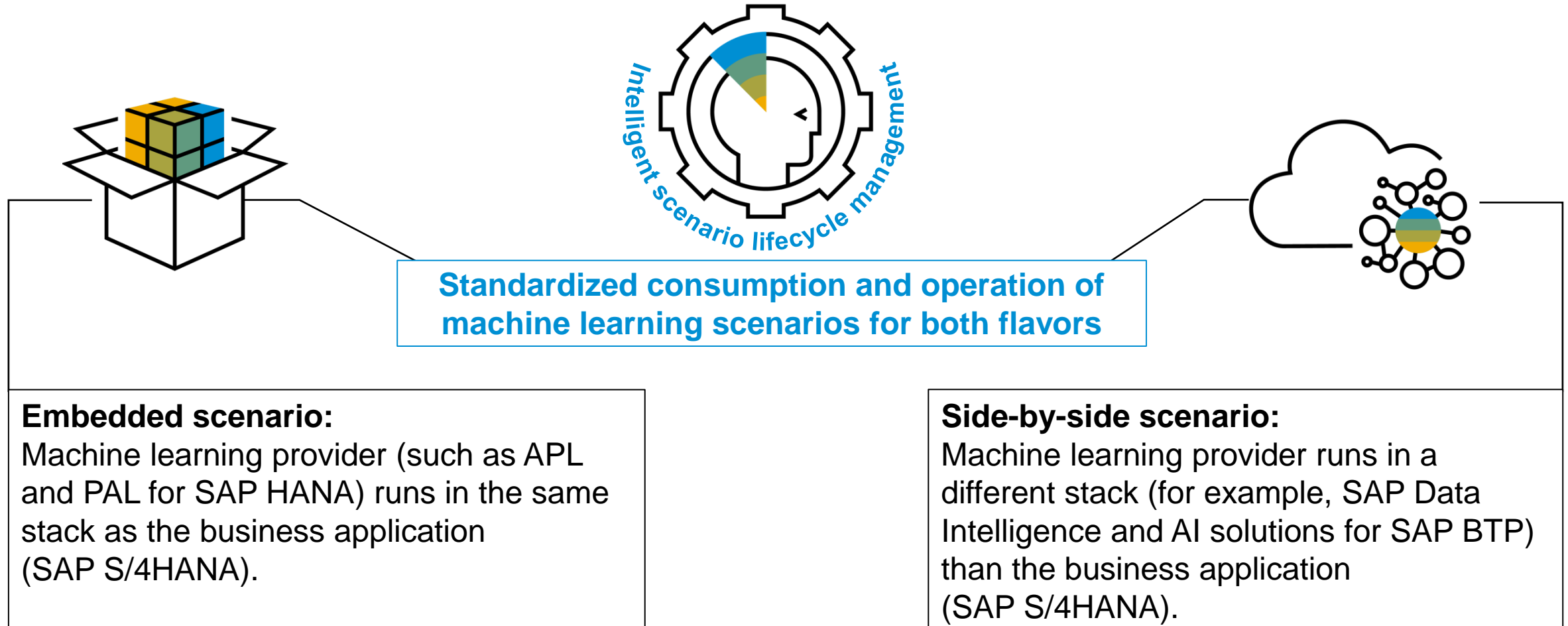
Motivation: Integrate and operate ML in SAP S/4HANA



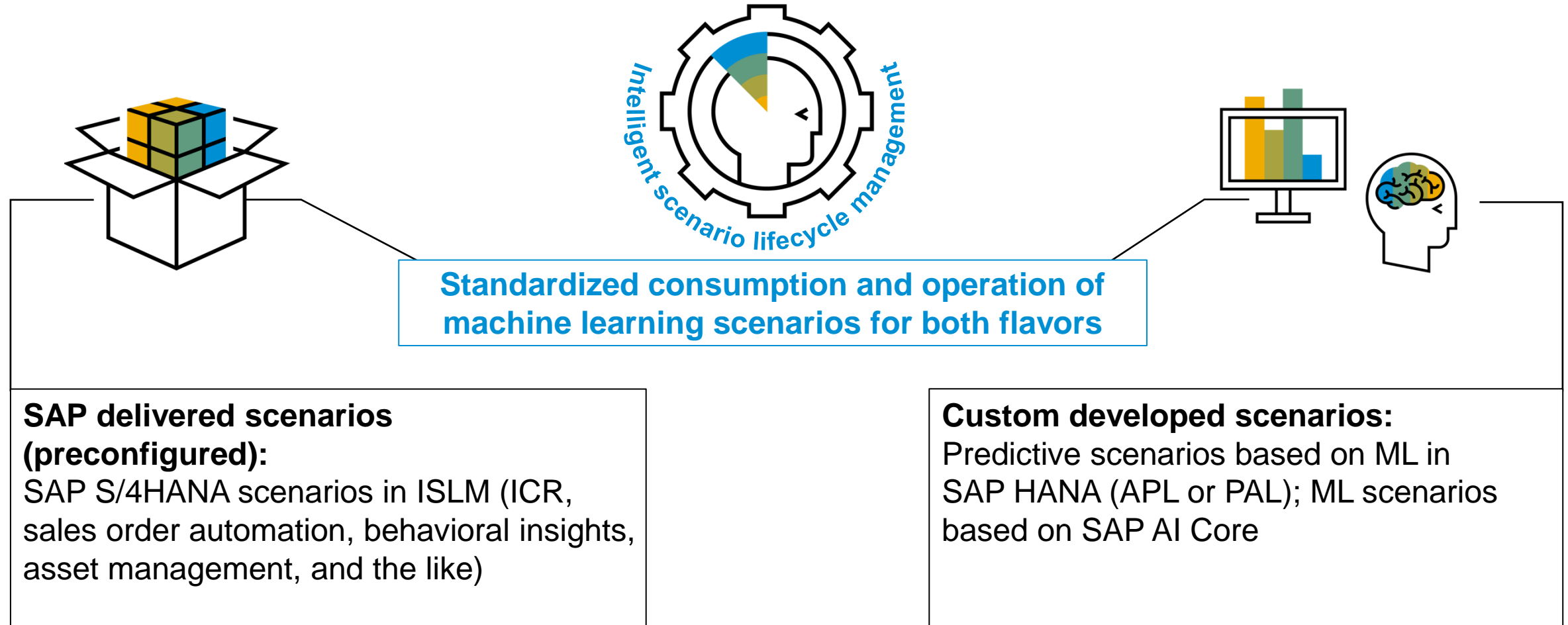
Enable efficient operation and management of machine learning scenarios in SAP S/4HANA



Goal: Build a harmonized solution for both worlds



Scope: Same solution for shipped and custom developed scenarios



Create , Manage and implement Corrections

Without ISLM



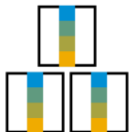
Additional efforts and cost to deliver the ML use case



Added complexity with usage of multiple tools across different stacks



Cumbersome change management during productive usage



Additional complexity to handle inference consumption

With ISLM

Leverage **harmonized and standardized** operational experience with ISLM for scenarios various LOBs



Central cockpit to operate and manage **within SAP S/4HANA stack**



Control about productive usage with an additional step “**activate**”.



Simplified inference consumption by **ABAP APIs** or **CDS views** for side-by-side & embedded flavors respectively

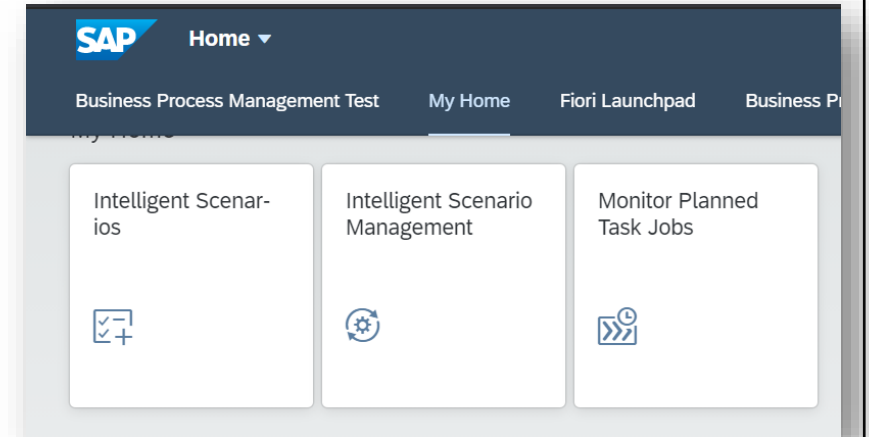


ISLM: Standardized integration of AI in SAP S/4HANA with ISLM



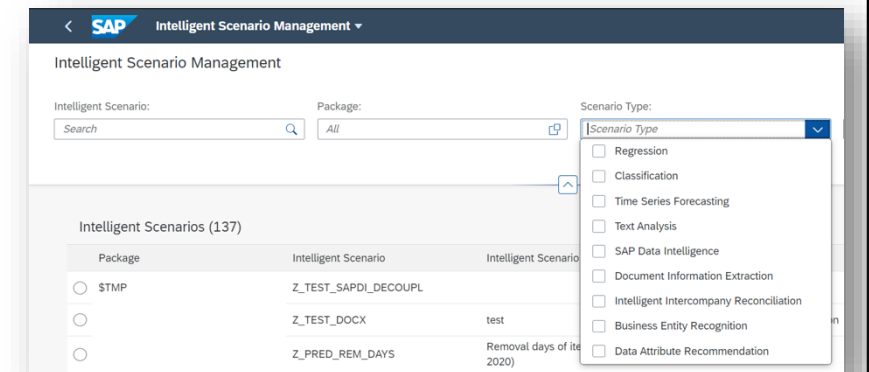
What is ISLM?

- Single-entry point within SAP S/4HANA stack to efficiently integrate and operate ML scenarios.
- Standardized framework delivered in SAP BASIS. ISLM is part of standard SAP S/4HANA license .
- Focus on customer managed use cases (custom developed & SAP delivered).
- ISLM is the Successor of SAP Predictive Analytics integrator



Key benefits:

- Simplified integration of ML capabilities into business applications with minimal coding
- ISLM enables end-to-end lifecycle operations in the context of the business application right from exploration, prerequisite checks, training and activation .
- Supports auditing requirements and simplifies the change management via explicit activation of models.



Machine Learning with SAP S/4HANA

Released Use Cases

Active

Use Case	LOB	Scope Item	Scenario Type
Create Sales Orders from Unstructured data	Sales	4X9	SBS
Intelligent Intercompany Reconciliation	Finance	4LG	SBS
Detect Trends of Purchase Contract Quantity Consumption	Sourcing & Procurement	1QR	Embedded
Supplier Delivery Prediction	Sourcing & Procurement	3FY	Embedded
Predict Time-frame for Stock in Transit	Supply Chain	20N	Embedded
Early detection of slow & non-,moving stock	Supply Chain	20N	Embedded
Sales Performance Prediction	Sales	2YJ	Embedded
Process Outsourced Billing Documents	Utilities		Embedded
Behavioral Insights	Services		Embedded

[SAP Community Blog](#)

Out-of-the box Intelligent Scenarios

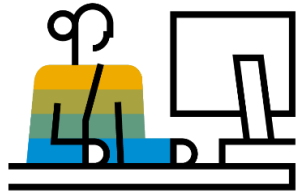
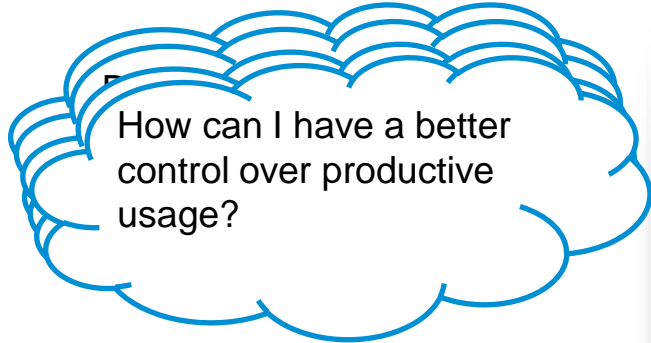
Intelligent Scenarios (7)

Package	Intelligent Scenario	Line of Business	Status	Intelligent Scenario Description	Scenario Type
<input type="radio"/> BEI_ML	BEI_LATE_FILING	Service	Published	Late Filing Prediction	Classification
<input type="radio"/>	BEI_LATE_PAYMENT	Service	Published	Late Payment Prediction	Classification
<input type="radio"/>	BEI_RECEIVERSHIP	Service	Published	Receivership Prediction	Classification
<input type="radio"/> FIN_ICA_MATCH	ICR_SERVICE	Finance	Published	Intelligent Intercompany Reconciliation	Intelligent Intercompany Reconciliation
<input type="radio"/> EAM_ML_ORDER_DAMAG E_CODE	PREDICTDAMAGECODE	Asset Management	Published	Prediction of Damage Code and Code Group for Maintenance Orders (Based on Maintenance Notifications)	Classification
<input type="radio"/>	PREDICTMAINTOBJPART	Asset Management	Published	Object part prediction in the area of EAM associated to a malfunction in a technical object	Classification
<input type="radio"/> RAP_SD_SLS_AUTOEXTR N	SO_AUTO_EXTRACTION	Sales	Published	Intelligent Scenario of Automatic Extraction for Sales Order Creation	Document Information Extraction

PAi migrated scenario

Intelligent Scenarios (17)							Prerequisite Checks	↓↑	☰
Package	Intelligent Scenario	Line of Business	Status	Intelligent Scenario Description	Scenario Type	Created At			
<input type="radio"/>	PPH_DD_VDM_STLM	INDIV_LEADTIME_STO2	Manufacturing	✔ Published	Predicted Individual Lead Time for Stock Transfer	Regression	16.05.2018, 17:18:44	>	
<input type="radio"/>	MM_IM_VDM_STOCK	MATERIAL_OVERDUE_SIT	Supply Chain	✔ Published	Stock in Transit material overdue	Regression	22.06.2017, 21:30:44	>	
<input type="radio"/>	ODATA_INVOICE_PAYMENT_SI_ML	MMIV_INVC_QTY_BLK	Sourcing & Procurement	✔ Published	Predictive Scenario for Blocked Invoices with Quantity Variance	Classification	16.02.2018, 21:45:46	>	
<input type="radio"/>	ODATA_MM_IM_SLONOMOMAT	MMSLO_CONSUMPTION_01		✔ Published	[Deprecated - do not use] Consumption Data for Slow or Non-Moving Materials	Regression	10.05.2019, 19:41:11	>	
<input type="radio"/>		MMSLO_CONSUMPTION_02	Supply Chain	✔ Published	Consumption Data for Slow or Non-Moving Materials	Regression	22.08.2019, 15:01:43	>	
<input type="radio"/>		MMSLO_STOCK_LEVEL_01		✔ Published	[Deprecated - do not use] Stock Level Data for Slow or Non-Moving Materials	Regression	10.05.2019, 19:44:03	>	
<input type="radio"/>		MMSLO_STOCK_LEVEL_02	Supply Chain	✔ Published	Stock Level Data for Slow or Non-Moving Materials	Regression	22.08.2019, 15:19:17	>	
<input type="radio"/>	ODATA_SD_PREDICTED_DELIVERY	PRDTDELIVCRTNDELAY	Sales	✔ Published	S/4HANA Sales: Predicted Delivery Creation Delay	Regression	14.05.2018, 14:30:02	>	
<input type="radio"/>		PRDTDELIVPROCGDELAY	Sales	✔ Published	S/4HANA Sales: Predicted Delivery Processing Delay	Regression	11.02.2019, 16:31:10	>	

Initial adoption & ML Ops powered by Intelligent Scenario Lifecycle Management



Business Administrator

The screenshots show the SAP Intelligent Scenario Management interface for the 'ICR_SERVICE' scenario (Intelligent Intercompany Reconciliation), Version 1.0.0. The status is 'Published' and it is a 'Consuming App' in the 'Finance' line of business.

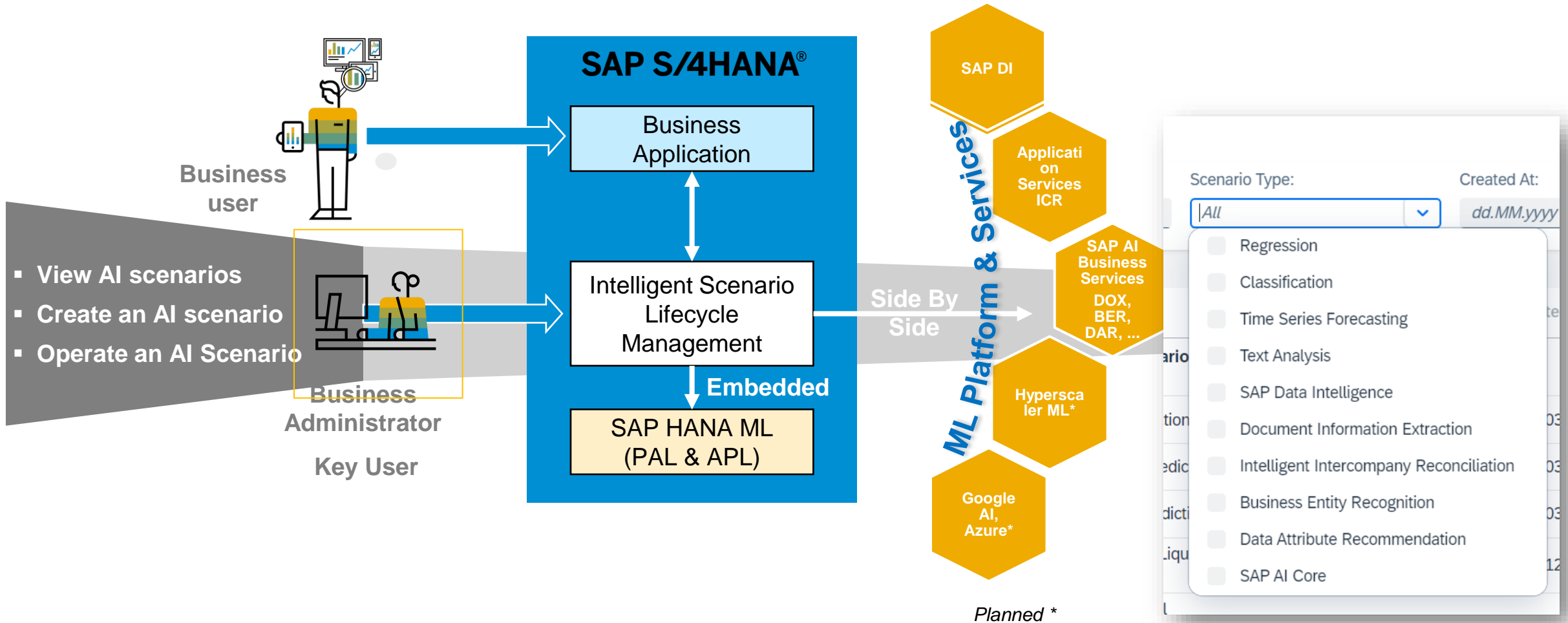
The interface displays the following metrics and actions:

- 33 Trainings
- 7 Deployments
- 45 Inferences

The 'Deployments (7)' table is shown below:

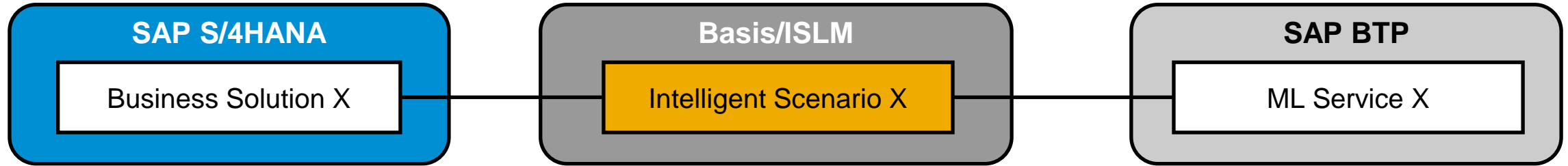
ID	Status	Description	Active	Training ID	Type
7	Deployed	Deploy based on version 1.0.0 training 31	Active for all	31	Local
Created At: 26.07.2022, 11:51:47					
6	Deployed	Deploy based on version 1.0.0 training 28		28	Local
Created At: 27.06.2022, 05:46:37					

ISLM: Standardized integration of AI in SAP S/4HANA



Standardized integration of AI in SAP S/4HANA

Intelligent scenario – the binding entity



- ISLM introduces a new entity called **intelligent scenario** per use case.
- Intelligent scenarios are **based on one intelligent scenario type** where the behavior is defined.
- For SAP S/4HANA shipped scenarios, **intelligent scenarios are ABAP objects** in your package shipped together with your solution.
- An intelligent scenario **binds** the business application to its consuming ML service such as in SAP BTP.
- ISLM provides customers control over productive usage with an additional step “activate”. This step enables to specify the appropriate trained model to be used in the consuming application.

ISLM: Delivering and consuming ML scenarios with ISLM



➤ Identify the ML technology & algorithm

➤ Create Intelligent scenario in ISLM as a binding entity

➤ Publish/deliver intelligent scenario

➤ Explore SAP delivered intelligent scenarios

➤ Identify relevant scenarios e.g. LOB specific, check additional information related to consuming business application

➤ Check Readiness requirements for an intelligent scenario on a given SAP S/4HANA system

➤ For SAP BTP service based scenarios, create service instance and service key in SAP BTP

➤ Maintain connection for the intelligent scenario to connect it to SAP BTP service instance using ISLM

➤ Train ML model with customer data

➤ Analyze quality of trained ML model.

➤ Deploy & Activate to specify which trained model to use in business application

➤ SAP S/4HANA model consumption in business scenario

Material Group Proposal [Purchase Requisition]

Procure to Pay

Use Case



Smooth flow of B2B procurement is highly dependent on proper requisition of free-text items. Employees filling out special order requests do often not know correct material groups which can affect corresponding processes which cases additional time and effort for correction.

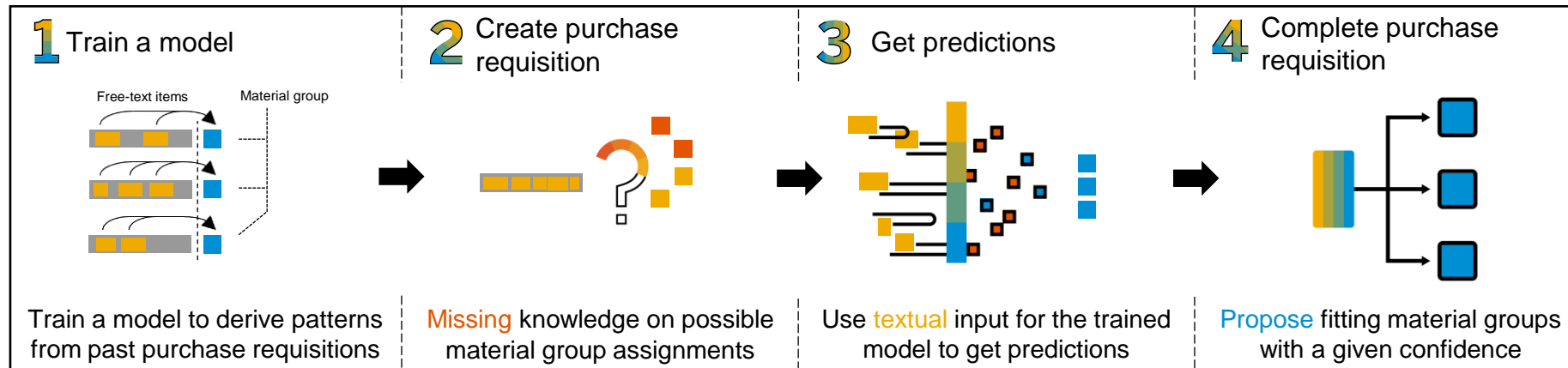
Problem Statement



In many cases free text items are assigned to wrong material groups. The purchasers then need to manually change the material group and assign the correct accounting information so that the follow-on invoice can be posted.

Solution

Simplify the free-text purchase requisitioning process by proposing fitting material groups based on historical free-text purchases.



Value Proposition

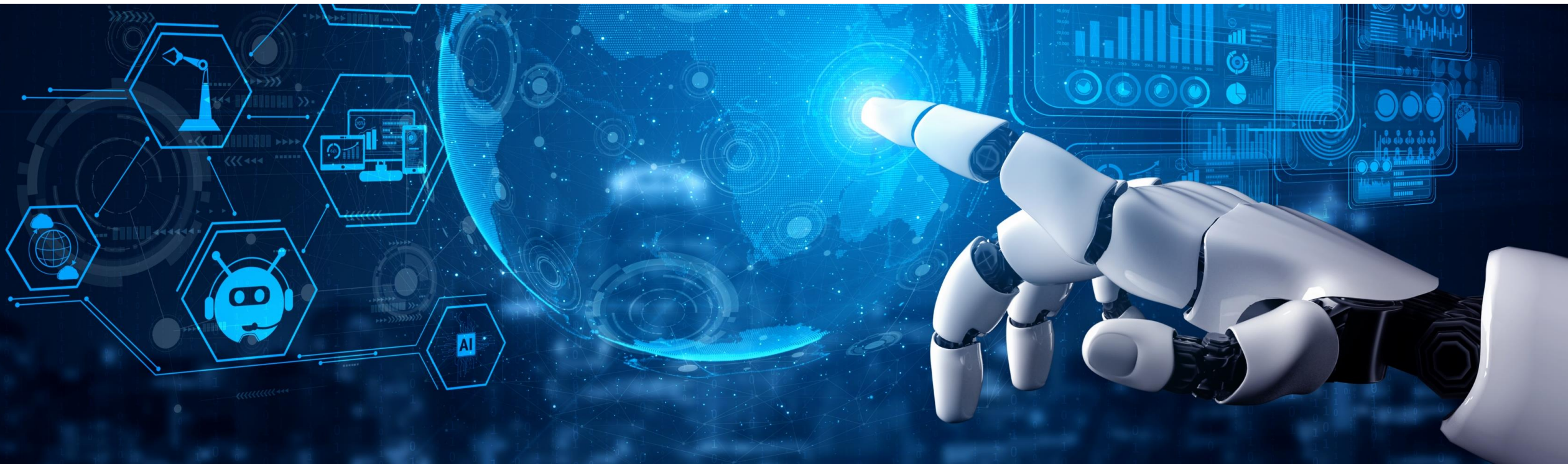


Automate and ease the ordering process for employees

Reduce the redundancy of manual work for purchasers

Accurate material group allocation results in correct assignments of following processes, preventing additional effort on follow-on processes

Summary: Further Information



Intelligent scenario lifecycle management

Further information

SAP Help links (latest releases)

- [SAP S/4HANA 2021 FPS01](#)
- [SAP S/4HANA Cloud 2202](#)

Web session replays

- [SAP Community Webinar](#)
- [SAP TechEd 2022 Session Replay](#)
- [SAP TechEd 2022 Session Replay](#)

SAP Community blogs and podcast series

- [ISLM – SAP Community Topic Page](#)
- [ISLM Frequently Asked Questions](#)
- [Resources and journey to machine learning with SAP S/4HANA: Blog series](#)
- [Podcast: Enhancements to the Intelligent Scenario Lifecycle Management aka ISLM](#)

SAP Road Map Explorer

[SAP Road Map Explorer](#): Search for “Machine Learning Scenario Management

Explore ISLM with SAP S/4HANA Fully-Activated Appliance

- [SAP Cloud Appliance Library](#):
- [SAP S/4HANA Fully-Activated Appliance](#).
- [Demo Script](#) for SAP S/4HANA 2022 Fully-Activated Appliance: *Predictive Analytics and Machine Learning*

Thank You.

Contact information:

Priti Dhingra

Director Product Management – SAP Labs India

priti.dhingra@sap.com

Abhishek Mishra

Product Owner – SAP Labs India

ab.mishra@sap.com