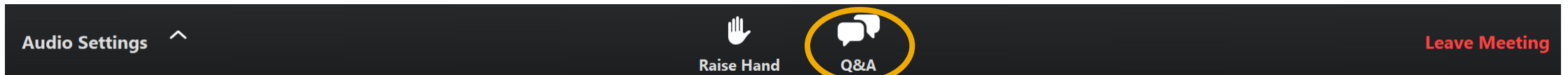


# Enable the Intelligent Enterprise with SAP Services

the webinar will start at 12:00 GMT+2

# Welcome!

You can start writing your questions using the command at the bottom of the screen





# Intelligenza e Velocità per immaginare ed implementare la Supply Chain del futuro, oggi

PUBLIC

**Massimo Mattioli**, Solution Architects Manager, Digital Supply Chain, SAP Services

**Andrea Pigozzi**, Principal Solution Architect, SAP Services

**Paolo Catagnoli**, IoT and Digital Supply Chain, Business Development

November , 2020



THE BEST RUN



# Today's Speakers



**Chiara De Maria**

**Business  
Development Consultants  
SAP Services**



**Massimo Mattioli**

**Solution Architects Manager  
Digital Supply Chain  
SAP Services**



**Andrea Pigozzi**

**Principal Business Process  
Architect  
SAP Services**



**Paolo Castagnoli**

**IoT and Digital Supply Chain  
Business Development  
SAP Services**

# Let's Build the Intelligent Enterprise Together



## Novembre: il mese del Manufacturing e della Supply Chain



Come rendere intelligente la Supply Chain: il **Demand Driven MRP**  
5 novembre



Le **funzionalità** che fanno la differenza in **S/4** in ambito Digital **Supply Chain** e come adottarle generando **valore**  
12 novembre



Come migliorare l'efficienza dei tuoi **Assets** attraverso la **manutenzione predittiva** e il **controllo della qualità**. Tecnologie e approcci progettuali a supporto  
19 novembre



**Intelligenza** e **Velocità** per immaginare ed implementare la **Supply Chain del futuro, oggi**  
26 novembre



## Dicembre: Il mese dell'Application Development & Integration



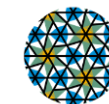
Utilizzare in modo consapevole la **SAP Cloud Platform** per disegnare l'Intelligent Enterprise **Architecture**  
1 dicembre



Rendere il codice ABAP al passo con i tempi grazie **all'ABAP Environment** di **SAP Cloud Platform**  
3 dicembre



**Estendere** le funzionalità e costruire **applicazioni innovative** con **SAP Cloud Platform**  
10 dicembre



Soddisfare le esigenze di **integrazione** dell'Intelligent Enterprise con **SAP Cloud Platform**  
17 dicembre


SUPPLY CHAIN, MANUFACTURING &  
MAINTENANCE  
**INNOVATION DAY**  
May 6th

INTELLIGENT ENTERPRISE **INNOVATION**  
**DAY**  
April 16th

VIRTUAL DATA  
**INNOVATION TOUR**  
July 9th

CUSTOMER EXPERIENCE  
**INNOVATION DAY**  
September 10th

INTELLIGENT SPEND MANAGEMENT  
**INNOVATION WORKSHOP**  
November 11th



# SAP S/4 MOVE INNOVATION WORKSHOP

## November 18th

# Let's Build the Intelligent Enterprise Together

## SAP S/4HANA



**S/4** innovation cannot wait – the **system conversion**  
March 17<sup>th</sup>



**S/4** innovation cannot wait – the **Cloud option**  
March 31<sup>st</sup>



The **capabilities** that make the difference in **S/4**  
April 14<sup>th</sup>

## Customer Experience



The right **Customer Experience platform** for your business  
April 28<sup>th</sup>



**Integrate** the **SAP C/4HANA Suite** in the enterprise **architecture**  
May 12<sup>th</sup>



Innovate and accelerate time to value with a **subscription based SAP Commerce Cloud** implementation  
May 26<sup>th</sup>

## Manufacturing & Supply Chain



**Intelligence** and **Speed** to imagine and deploy the **Supply Chain** of the future, **today**  
June 9<sup>th</sup>



How to exploit **IoT data** to benefit different **roles** in the organization, in a **fast** and **effective** way  
June 23<sup>rd</sup>



An ocean of **corporate data**: diving in to discover hidden worlds. **Data management** and **priorities** in the Intelligent Enterprise  
July 7<sup>th</sup>



**SAP Analytics Cloud.** The innovation of the Analytics App  
July 21<sup>st</sup>

# COVID-19 Our Customers Need Our Help

## Survival Mode



- Customers in **Survival Mode** are severely affected by the economic consequences of the coronavirus.
- **Examples:**
  - **Airline and Travel** industry, is seeing 70-80% of its near-term demands collapse.\*
  - **Oil & Gas** market are hard hit with Oil futures dropping 43%

## Growth Mode



- Customers in **Growth Mode**, challenged beyond their normal capacity struggling to fulfill (critical) demand.
- **Examples:**
  - **Pharmaceutical & health** industries
  - **Supermarkets and Consumer Products**
  - **Safety & health.**
  - **Internet & New Media**

## Retooling Mode



- Customers in **Retooling Mode** are supporting the fight against COVID-19 by adjusting their production to manufacture essential and much-needed assets.
- **Examples:**
  - **Automotive Manufacturers** creating ventilators,
  - **Spirits Manufacturers** creating sanitizers
  - **Sportswear Manufacturers** creating PPE.

---

**Slowed** or in some cases stalled growth - experts fear **delayed recovery** potentially with **long-term consequences**

**Growing heavily** and disproportionately due to consumers' **changing buying behaviors**

**Realigning business models** temporarily and long term to respond to the market and **Pandemic demands**

\*McKinsey Study

## The **client is expecting fast outcomes** to address their business priorities

*“During the current crisis, businesses have **worked faster and better** than they dreamed possible just a few months ago. Maintaining that sense of possibility will be an enduring source of competitive advantage... What’s important is to **identify the primary sources of revenue** and, on that basis, **make the “now or never” moves** that need to happen before the recovery fully starts”\**





# Structure of the Approach

## 1 Overview by Industries

Overview – Selection of Core Industry Related Services (1/4)  
(Cross LOBs Services, like for HR are in the details per Industry)

Industry	Covid Impact	Packages	Duration
Healthcare	★	Ariba Discovery Ariba FTY Service Quick-start service for SAP Digital Boardroom Quick-start service for SAP Analytics Cloud Quick-start for SAP Logistics Business Network	1-3 day 10 week 4 week 4 week 10 week
CP	★	Ariba Discovery Ariba FTY Service Commerce Cloud quick set-up Quick-start service for SAP Service Cloud Quick-start service for SAP Digital Manufacturing Cloud for insights Quick-start for SAP Logistics Business Network	1-3 d 10 w 6 w 7 w 4 w 10 w
Teico	★	Quick-start Service for Conversational AI Quick-start Service for Service Target Intelligence Quick-start service for SAP Digital Boardroom Quick-start service for SAP Analytics Cloud Quick-start service for SAP Service Cloud	8 w 6 w 4 w 6 w 7 w
Lifescience	★	Ariba Discovery Ariba FTY Service Best Practices Implementation for SAP Integrated Business Planning Quick-start service for SAP Digital Manufacturing Cloud for insights Quick-start for SAP Logistics Business Network	8 w 6 w 4 w 6 w 7 w
Retail	★	Ariba Discovery Ariba FTY Service Commerce Cloud quick set-up Quick-start service for SAP Service Cloud What-if Analysis Forecasting&Replenishment Deployment of inventory diagnostic for Retail SAP Assortment Planning, omnichannel content add-on SAP Merchandise Planning, omnichannel content add-on	8 w 6 w 4 w 6 w 7 w

★ Strong Positive Impact   
 ★ Positive Impact   
 ● No significant impact   
 ★ Negative impact   
 ★ Strong Negative Impact

## 2 Detailed Industry View: from Impact to Customer Conversation, to Solution, to Fast Implementation Services



## 3 Cross Industry View

**SAP Quick-Start Service for SAP Analytics Cloud**

The SAP Quick-Start Service is aimed to achieve technical and functional readiness for SAP Analytics Cloud based on a defined, high value use case. It provides fast time to value, with a standardized, proven approach to create a baseline for large scale product deployments.

**Business needs**

- Need for an integrated BI, Planning and Predictive capability to understand and predict business drivers, adjust and monitor business plans and provide transparency across the organization to help improve business outcome.
- Quick time to value after purchase of SAP Analytics Cloud.
- Maximize (early) product utilization
- Foundation for large scale deployments

**Delivery approach and scope**

The service is structured along the following key phases:

- Explore & Prepare:** On-site scoping workshop to define the use case and delivery (scope/budget), design solution & prepare delivery.
- Realize:** Remote activities including data modeling, configuration, UX optimization and testing to realize functional and technical readiness for the identified use case in two time-based sprints.
- Deploy:** Demonstrate functional readiness.

**Value and benefits**

- Make a confident start to your delivery program supported by our SAP Analytics Cloud experts based on SAP Best Practices.
- Fast user adoption of the new solution based on a business led approach.
- Focus on realizing a first high value use case.



# Let's Build the Intelligent Enterprise Together

## SAP S/4HANA



**S/4** innovation cannot wait – the **system conversion**  
March 17<sup>th</sup>



**S/4** innovation cannot wait – the **Cloud option**  
March 31<sup>st</sup>



The **capabilities** that make the difference in **S/4**  
April 14<sup>th</sup>

## Customer Experience



The right **Customer Experience platform** for your business  
April 28<sup>th</sup>



**Integrate** the **SAP C/4HANA Suite** in the enterprise **architecture**  
May 12<sup>th</sup>



Innovate and accelerate time to value with a **subscription based SAP Commerce Cloud** implementation  
May 26<sup>th</sup>

## Manufacturing & Supply Chain



**Intelligence** and **Speed** to imagine and deploy the **Supply Chain** of the future, **today**  
June 9<sup>th</sup>



How to exploit **IoT data** to benefit different **roles** in the organization, in a **fast** and **effective** way  
June 23<sup>rd</sup>



An ocean of **corporate data**: diving in to discover hidden worlds. **Data management** and **priorities** in the Intelligent Enterprise  
July 7<sup>th</sup>



**SAP Analytics Cloud.** The innovation of the Analytics App  
July 21<sup>st</sup>

# The **Intelligent Enterprise** framework

**Experience**

**Operations**

# Agenda

**Intelligence and Speed to imagine and deploy the Supply Chain of the future, today**

## **1) SAP Vision for Industry 4.0 and Digital Supply Chain**

- Market Dynamics
- The SAP Strategy for Industry 4.0: Industry 4.Now
- Vision of a modern supply chain

## **2) SAP DSC Solutions and the Intelligent Enterprise**

- SAP Solutions for the Intelligent Digital Supply Chain
- SAP DSC Vision: Network of Networks

## **3) Close the GAP and ACT: SAP Services for the Intelligent Digital Supply Chain**

- COVID-19 Essential Business Services
- YOUR path to the Intelligent DSC: SAP DSC innovation Workshop

# Agenda

**Intelligence and Speed to imagine and deploy the Supply Chain of the future, today**

## **1) SAP Vision for Industry 4.0 and Digital Supply Chain**

- Market Dynamics
- The SAP Strategy for Industry 4.0: Industry 4.Now
- Vision of a modern supply chain

## **2) SAP DSC Solutions and the Intelligent Enterprise**

- SAP Solutions for the Intelligent Digital Supply Chain
- SAP DSC Vision: Network of Networks

## **3) Close the GAP and ACT: SAP Services for the Intelligent Digital Supply Chain**

- COVID-19 Essential Business Services
- YOUR path to the Intelligent DSC: SAP DSC innovation Workshop



What's on people's mind at the beginning of this **new decade**?

*Global Risks 2020: An **Unsettled** World* - [The Global Risks Report](#)  
World Economic Forum

*Supply chain **disruptions** continue to grow at an alarming rate* - [Article on Forbes](#)  
Preparing For The Unknown  
In Your Supply Chain

To be able to manage what is **in your control**, you need to connect your supply chain ecosystem for **collaboration** and **transparency**



# Industry 4.0 Potential and Status

# USD 3.7 trillion

Value creation potential of manufacturers and suppliers implementing Industry 4.0 in 2025



68%

consider Industry 4.0  
as **top priority**



41%

are still **piloting**  
Industry 4.0



29%

are **deploying**  
Industry 4.0 **at scale**



# Market Dynamics

How successful organizations leverage new technologies and focus, to stay ahead of the curve



## Technology Enablers



Cloud Orchestration



Autonomous systems



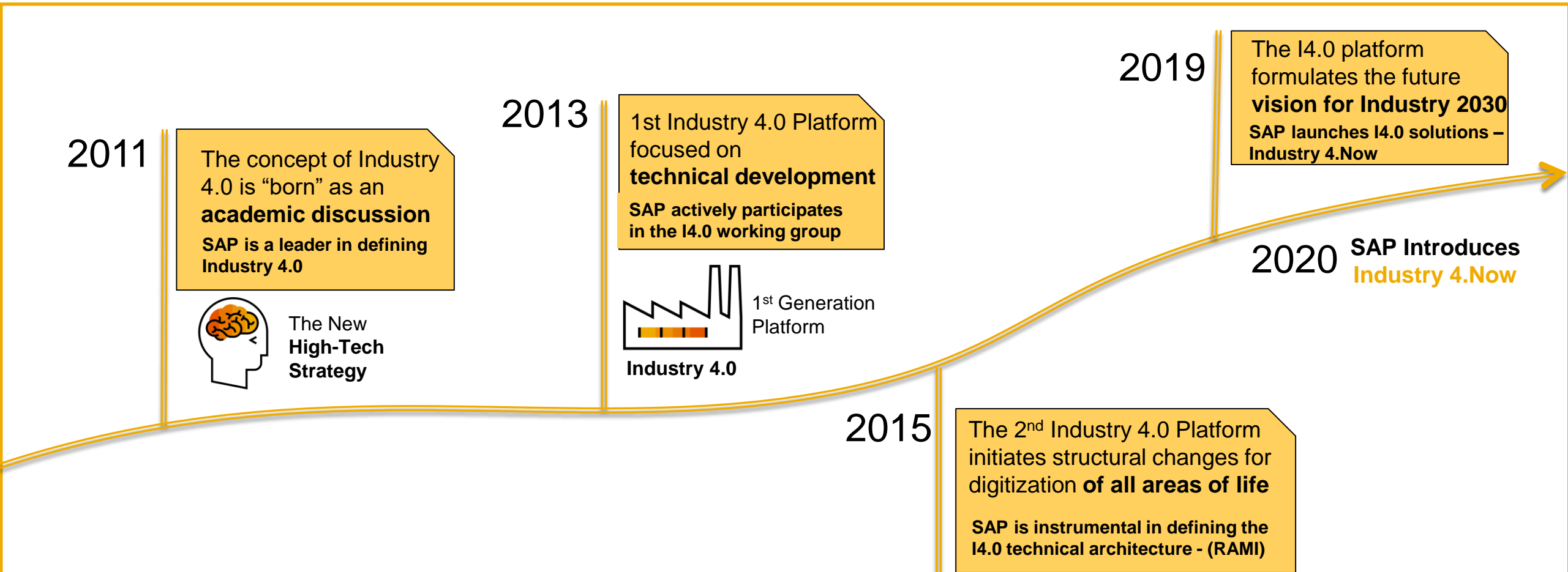
Edge computing



Industrial Data Management

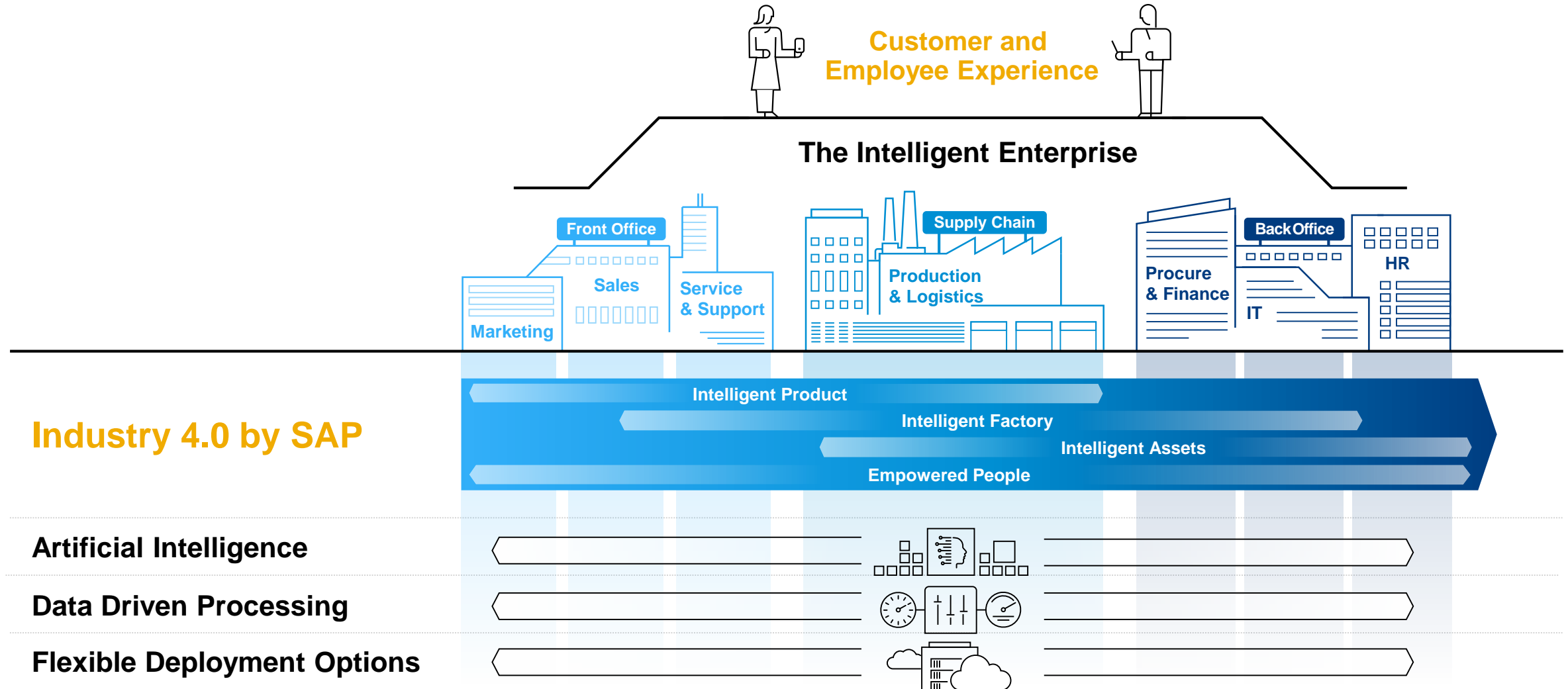
# Industry 4.0 - An Evolution to the Future of Productivity Platform

Industry 4.0 has developed from an academic debate to a crucial strategic differentiator



# Industry 4.0 - by SAP

Leveraging Intelligent Enterprise Technologies and Applications

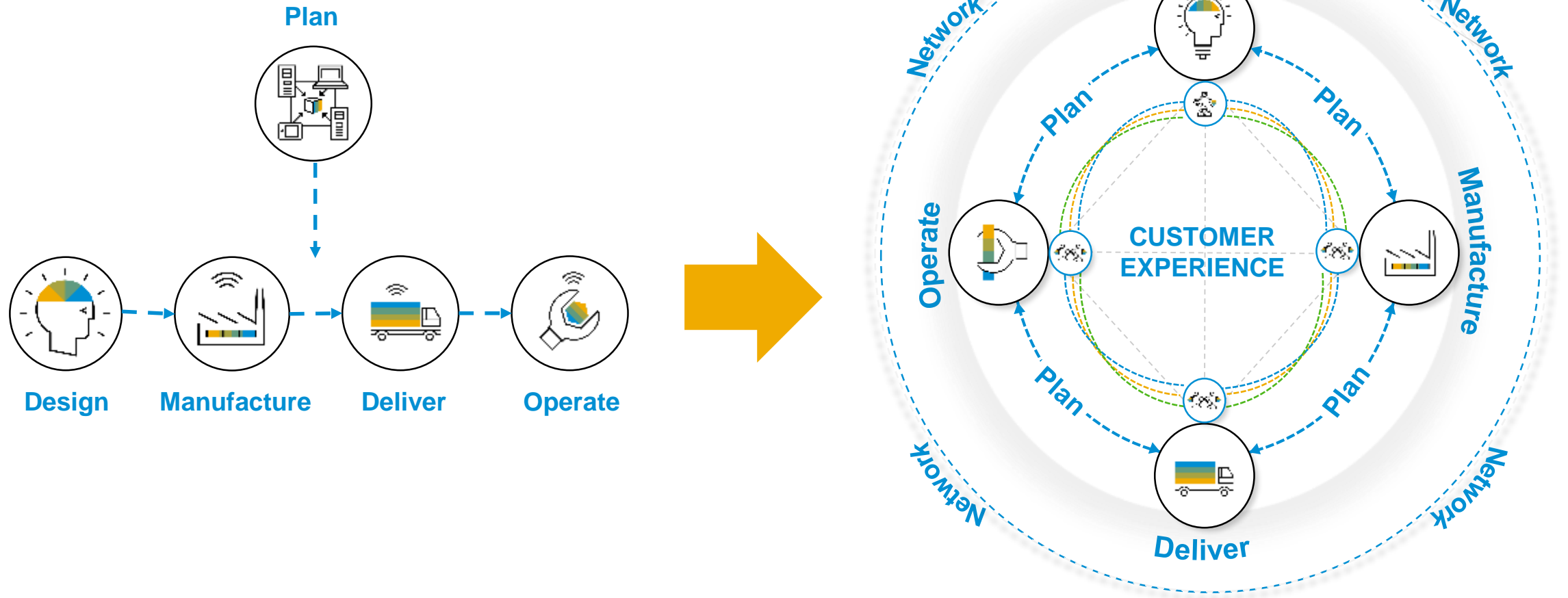


# What Does This Mean **for You?**

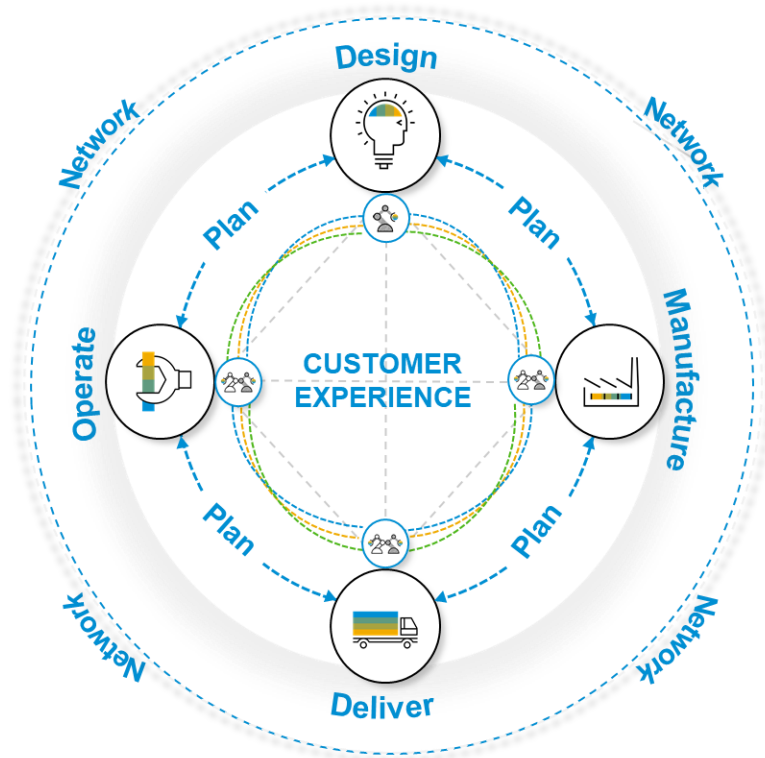


# Top Floor Wants the Connected Supply Chain but

... continues to organize in departmental silos



# Business Practices to be a best run business for the long term



## Design

- Reduce time to market
- Continuously and sustainably innovate
- Deliver on customer demand

SAP Intelligent Product Design  
SAP Product Compliance  
SAP Recipe Development



## Plan

- Holistic view of demand
- Improve forecast accuracy

SAP Integrated Business Planning



## Manufacture

- Optimize processes and minimize waste
- Improve collaboration with contractors
- Increase agility and responsiveness

SAP Digital Manufacturing Suite  
SAP Environment, Health, and Safety



## Deliver

- Improve speed, efficiency and sustainability
- Deliver perfect orders consistently and profitably
- Increase warehouse utilization and transportation

SAP Transportation Management  
SAP Extended Warehouse Management



## Operate

- Manage lifecycle of physical assets efficiently
- Predict and simulate asset behavior
- Avoid unplanned downtime

SAP Asset Performance Management  
S/4HANA Operations & Maintenance  
SAP Environment, Health, and Safety



## Network

- Enable better collaboration between shippers and carriers for improved process efficiency
- Improve collaboration between manufactures and operators for Asset Management

SAP Ariba Business Network  
SAP Design & Manufacturing Network  
SAP Logistics Business Network  
SAP Asset Intelligent Network

# Agenda

**Intelligence and Speed to imagine and deploy the Supply Chain of the future, today**

## **1) SAP Vision for Industry 4.0 and Digital Supply Chain**

- Market Dynamics
- The SAP Strategy for Industry 4.0: Industry 4.Now
- Vision of a modern supply chain

## **2) SAP DSC Solutions and the Intelligent Enterprise**

- SAP Solutions for the Intelligent Digital Supply Chain
- SAP DSC Vision: Network of Networks

## **3) Close the GAP and ACT: SAP Services for the Intelligent Digital Supply Chain**

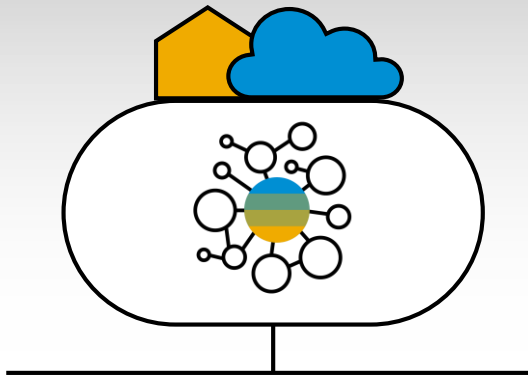
- COVID-19 Essential Business Services
- YOUR path to the Intelligent DSC: SAP DSC innovation Workshop



# SAP Digital Supply Chain Solutions for Design

Digitally orchestrate product development from Idea to product, resulting in reduced time to market, higher return on investment, higher margins, and reliable product launches

## Product Lifecycle Management



### SAP S/4HANA

- E2E PLM for Discrete & Process Industries
- Engineering Control Center for Mechatronic Products
- Advanced Variant Configuration
- Product Compliance, Lifecycle Costing and Sustainability
- Enterprise Project and Portfolio Management
- Visual Enterprise



### SAP Enterprise Product Development

- Intelligent Product Design
- Predictive Engineering Insights
- Product Lifecycle Costing
- Visual Enterprise
- Advanced Variant Configuration and Pricing

Differentiate by using **design data beyond engineering** to simulate and visualize the business impact of product development on costs, supply chain, procurement, manufacturing, and service to enable fast decision making while reducing time to market, improving profits and design with quality



# Product Development and Configuration – Product Visualization



Repurpose 2D and 3D design data to improve how people communicate, collaborate, and make decisions throughout the product lifecycle



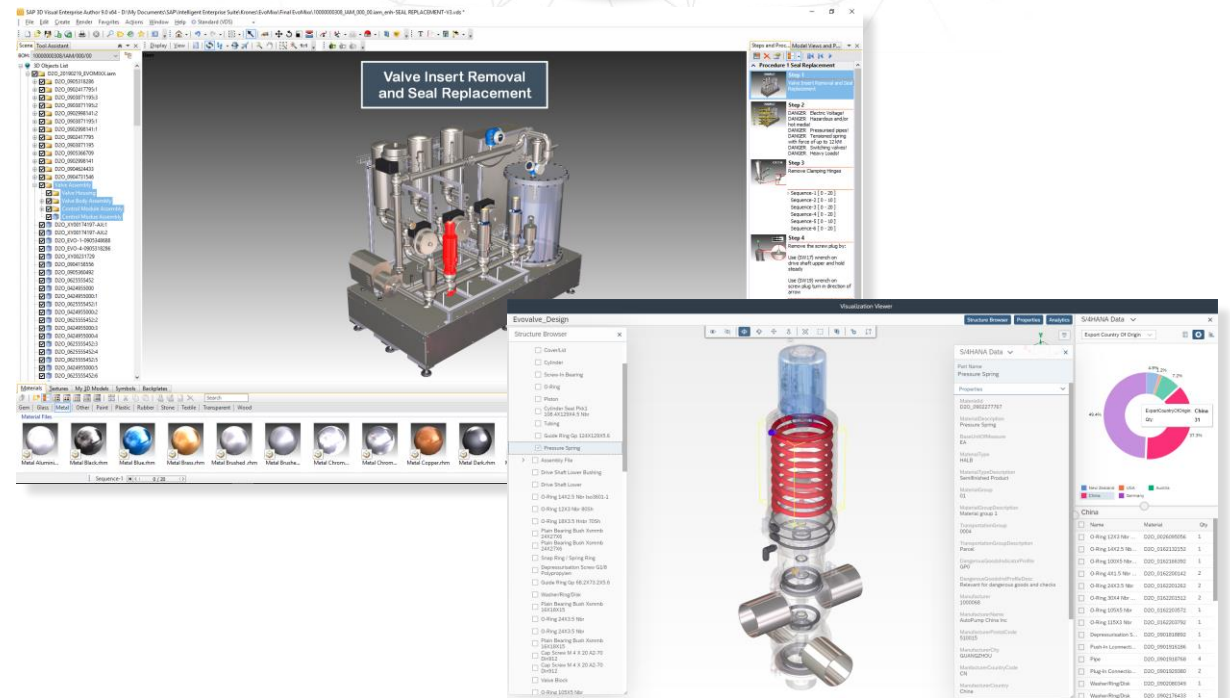
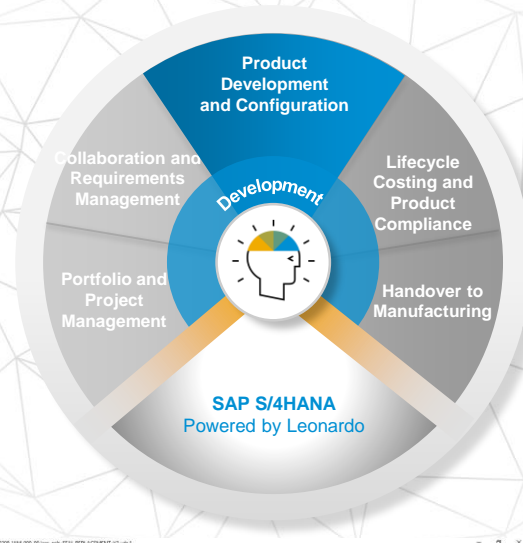
Automate paper-based workflows that help increase employee productivity and engagement



Provide non engineering users with access to graphical content that supports work instruction creation and management



Streamline crucial workflows for documenting assembly instructions, defining service procedures, and generating animated, step-by-step processes



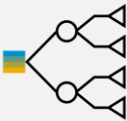
# Lifecycle Costing and Product Compliance – Product Cost Control



Manage costs for new product innovations and customer-specific engineered products



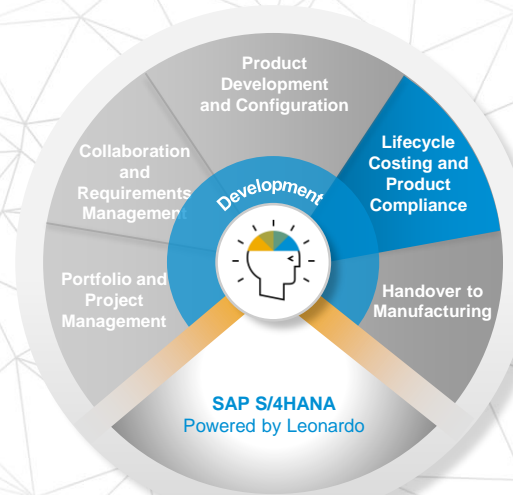
Minimize costs by securing future product margins early, when the design is evolving and master data is incomplete



Simulate the impact of cost reduction measures by identifying cost drivers in later stages of the product lifecycle



Gain visibility on cost structures across diverse teams

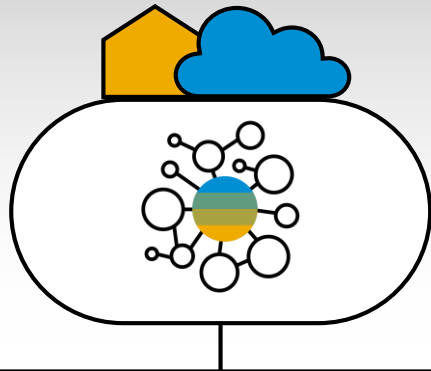


Item	Desc	UoM	Total Cost	Re-qty	Price (Fixed)	Trans-fer	Price (Var-iable)	Trans-fer	Price	To	Key Figures
2	2Ringguard double-end valve - intelligent Venturis	EA	4,496.56	1	4,496.56	SAP	144.50	SAP	4,352.06	SAP	Total Cost
39	PRINTING_D02_PRINT ID Plate Printing	EA	28.20	1	28.20	SAP	15.27	SAP	12.93	SAP	Total Cost
39	QUALITYCHECK_D02_PRINT Quality Check...	EA	28.20	1	28.20	SAP	15.27	SAP	12.93	SAP	Total Cost
39	PRINTING_D02_PRINT Pricing of Components	EA	42.29	1	42.29	SAP	22.32	SAP	19.97	SAP	Total Cost
39	ASSEMBLY_D02_ASMB Main Assembly...	EA	54.04	1	54.04	SAP	27.02	SAP	27.02	SAP	Total Cost
39	SUPPLY_D02_PRINT ID Plate Supply to ADV	EA	28.20	1	28.20	SAP	15.27	SAP	12.93	SAP	Total Cost
39	TEST_D02_ASMB Functional Test	EA	54.04	1	54.04	SAP	27.02	SAP	27.02	SAP	Total Cost
39	PULSAR_D02_VALVE Actuator Double-En...	EA	42.29	1	42.29	SAP	22.32	SAP	19.97	SAP	Total Cost
EV11	D02_090431218 GUARD	EA	429.00	2	214.50	SAP	0.00	SAP	150.00	SAP	Total Cost
EV11	D02_0900173786 SENSOR CABLE	EA	60.78	1	60.78	SAP	0.00	SAP	42.50	SAP	Total Cost
EV11	D02_090431218 GUARD	EA	712.14	1	712.14	SAP	0.00	SAP	498.00	SAP	Total Cost
EV11	D02_090431218 GUARD	EA	22.80	1	22.80	SAP	0.00	SAP	22.80	SAP	Total Cost
EV11	D02_090431218 GUARD	EA	7.15	1	7.15	SAP	0.00	SAP	5.00	SAP	Total Cost
EV11	D02_090431218 GUARD	EA	21.45	1	21.45	SAP	0.00	SAP	15.00	SAP	Total Cost
EV11	D02_090431218 GUARD	EA	1.00	1	1.00	SAP	0.00	SAP	0.70	SAP	Total Cost
EV11	D02_090431218 GUARD	EA	25.74	1	25.74	SAP	0.00	SAP	18.00	SAP	Total Cost
EV11	D02_090431218 GUARD	EA	34.32	1	34.32	SAP	0.00	SAP	24.00	SAP	Total Cost
EV11	D02_090431218 GUARD	EA	34.32	1	34.32	SAP	0.00	SAP	24.00	SAP	Total Cost
EV11	D02_090431218 GUARD	EA	127.71	1	127.71	SAP	0.00	SAP	112.00	SAP	Total Cost
EV11	D02_090431218 GUARD	EA	139.70	1	139.70	SAP	0.00	SAP	100.00	SAP	Total Cost
EV11	D02_090431218 GUARD	EA	107.25	1	107.25	SAP	0.00	SAP	75.00	SAP	Total Cost

# SAP Digital Supply Chain Solutions for Plan

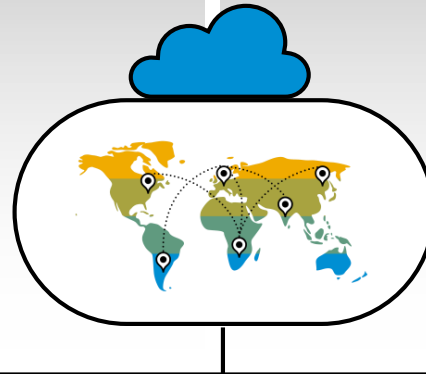
Connect strategic and operational planning with real-time visibility and execution

## Digital Business Planning



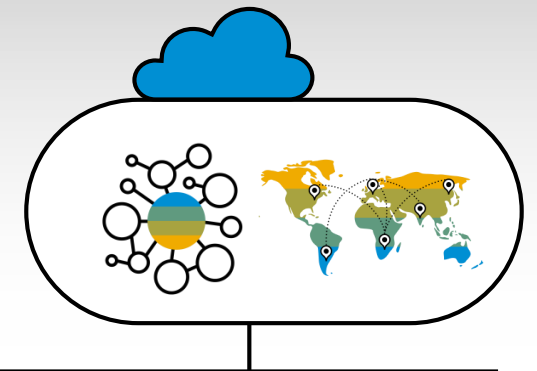
### SAP S/4HANA

Production Planning  
Available to Promise  
(Demand driven) - Material  
Requirements Planning  
Extended Service Part Planning



### SAP Integrated Business Planning (IBP)

Supply Chain Control Tower  
Sales & Operation Planning  
Demand  
Inventory  
Demand Driven Replenishment  
Response and Supply



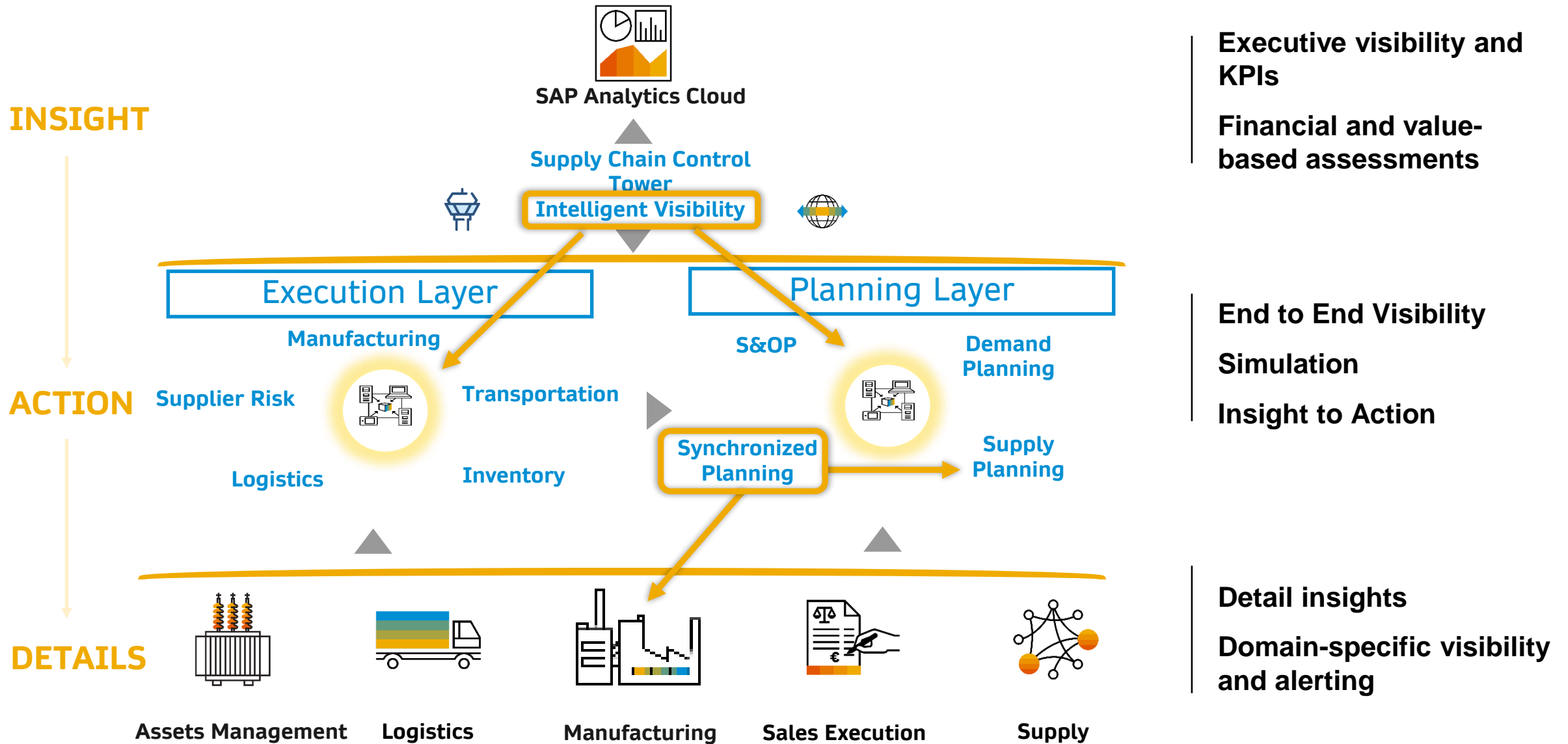
### Integrated into SAP Ariba Business Network

Supply Chain Collaboration (SCC)

- Planning Collaboration
- Multi-tier Order Collaboration
- Quality Collaboration

Enable better 'Customer and Product Experience' by staying continuously aligned across departmental silos with a **unified view** of real-time 'demand and supply' of the Extended Supply Chain.

# Harmonized Supply Chain Planning



# Intelligent Visibility - Order based alerts

By selecting a location that has alerts, a **detail screen** is open. A **summary** of the alerts is displayed in a list

**Total alerts** per locations displayed in red

By selecting an alert from the list you can see **details** (i.e the sales order that are unconfirmed for the selected location)

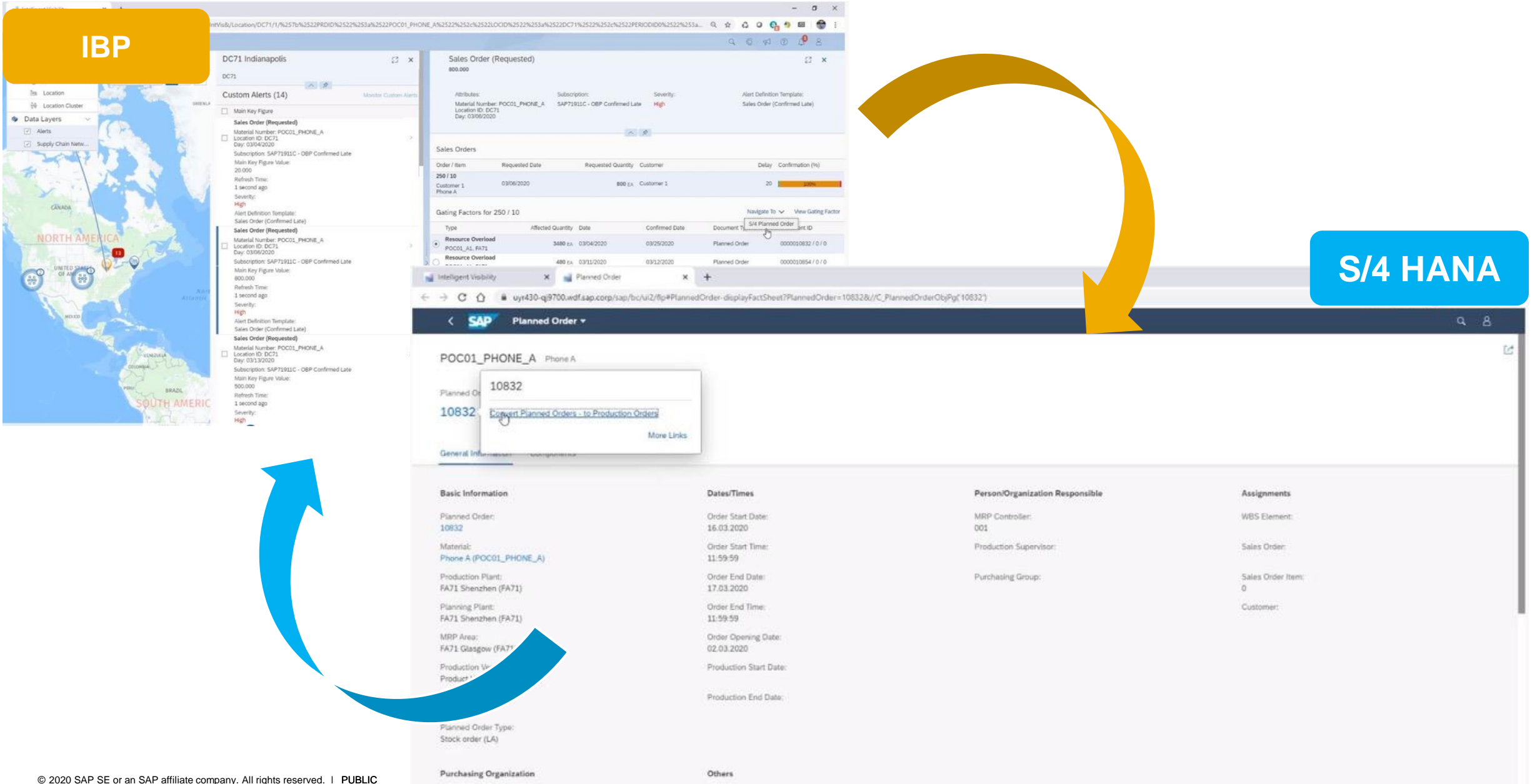
The screenshot displays the SAP Alert Details interface. On the left, a map of North America shows a red circle with the number '59' over the United States, indicating the total number of alerts for that region. The main panel shows a list of 'Custom Alerts (59)' for location 'DC71 Indianapolis'. One alert is selected, showing details for a 'Sales Order (Requested)' with a material number of 'POC01\_PHONE\_A' and a value of '50.000'. The alert severity is 'High'. On the right, a detailed view of the sales order is shown, including a table of 'Gating Factors for 265 / 10'.

Order / Item	Requested Date	Requested Quantity	Customer	Delay	Confirmation (%)
265 / 10 Customer 1 Phone A	03/24/2020	50 EA	Customer 1	3	90%

Type	Affected Quantity	Requested Date	Confirmed Date	Document Type	Document ID
Insufficient Lead Time POC01_CASE_A, FA71	5 EA	03/19/2020	03/24/2020	Purchase Requisition	0010014978 / 10 / 0
Insufficient Lead Time POC01_CPU_A, FA71	5 EA	03/19/2020	03/24/2020	Purchase Requisition	0010014985 / 10 / 0
Insufficient Lead Time POC01_MEMOR Y, FA71	10 EA	03/19/2020	03/24/2020	Stock Transfer Requisition	0010014992 / 10 / 0
Insufficient Lead Time POC01_PACKAG ING_A, FA71	5 EA	03/19/2020	03/24/2020	Purchase Requisition	0010014999 / 10 / 0

# Contextual navigation between IBP and ERP



# Contextual navigation between IBP and ERP

**IBP**

Standard\* | Select Profile | DC71 Indianapolis | DC71

Planning Area\* | Version/Scenario\* | Location ID | Material Number | Alert Subscriptions | Time Periods

Alerts (1)

Order / Item	Requested Date	Requested Quantity	Customer	Delay	Confirmation (%)
391 / 10 Customer 1 Phone A	09/25/2020	300 EA	Customer 1	4	60%

Gating Factors for 391 / 10

Type	Affected Quantity	Requested Date	Confirmed Date
Resource Overload POC01_A1_FA71	90 EA	09/23/2020	09/29/2020
Insufficient Lead Time			

Product Detail  
S/4 Planned Order  
Production Scheduling Board

**S/4 HANA**

Production Scheduling Board

Standard | Mode Find Slot | Direction Forwards | Scheduling | Order

Resource	Resource Description	Thu, Sep 24, 2020	Fri, Sep 25, 2020	Sat, Sep 26, 2020	Sun, Sep 27, 2020
WPOC01_A1_FA71_001	POC01_A1_001			12 AM - 4 PM	12 AM - 8 AM

Operation Information

Overview

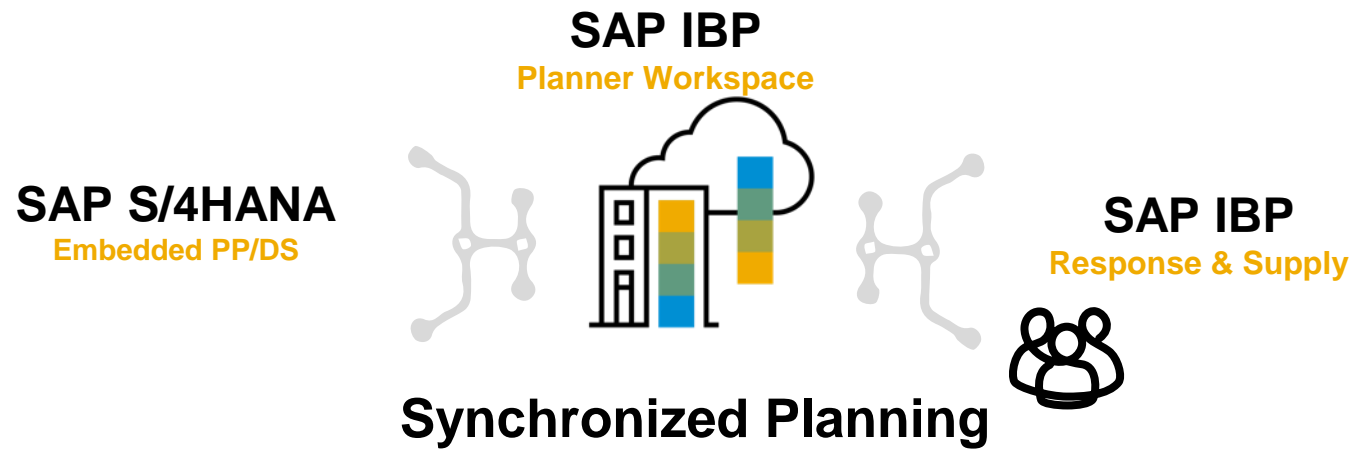
Operation Number: 5364-10  
Operation Start Date: 25.09.2020 03:56 PM  
Operation End Date: 28.09.2020 11:59 AM  
Status: -  
Product: POC01\_PHONE\_A  
Product Description: Phone A  
Quantity: 35.00 EA

Component Issues  
Alternative Resources  
Order  
Setup

# Synchronized Planning – Planner Workspace

Synchronized Planning provides a tight integration between **IBP** and **S/4HANA embedded PP/DS** under one common **Planners Workspace**.

It provides a consistent platform for end-to-end planning in the supply chain from **customer demand** to **deployment**.



Centralized User Interface

One UI across IBP and PP/DS



Resolve exceptions and replan

Enable **exception based planning and resolving** across applications supported by **seamless orchestration of planning** between IBP and S/4 HANA embedded PP/DS



What-if & Simulation Capabilities

On the fly **Simulation capabilities across applications** and ability to either promote or discard the simulations in a central UI



Integration IBP & S/4HANA

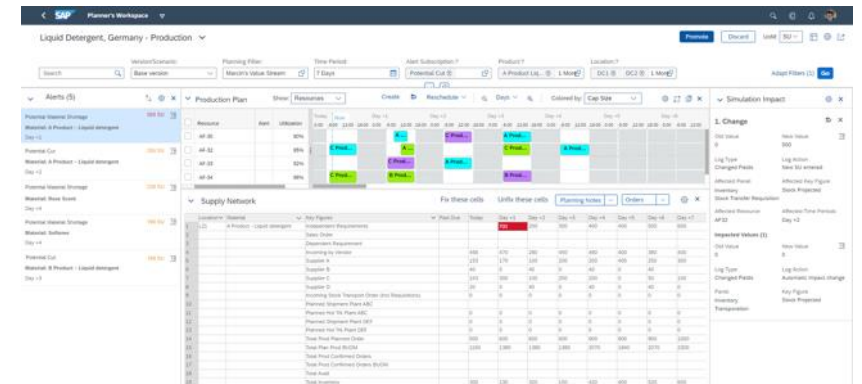
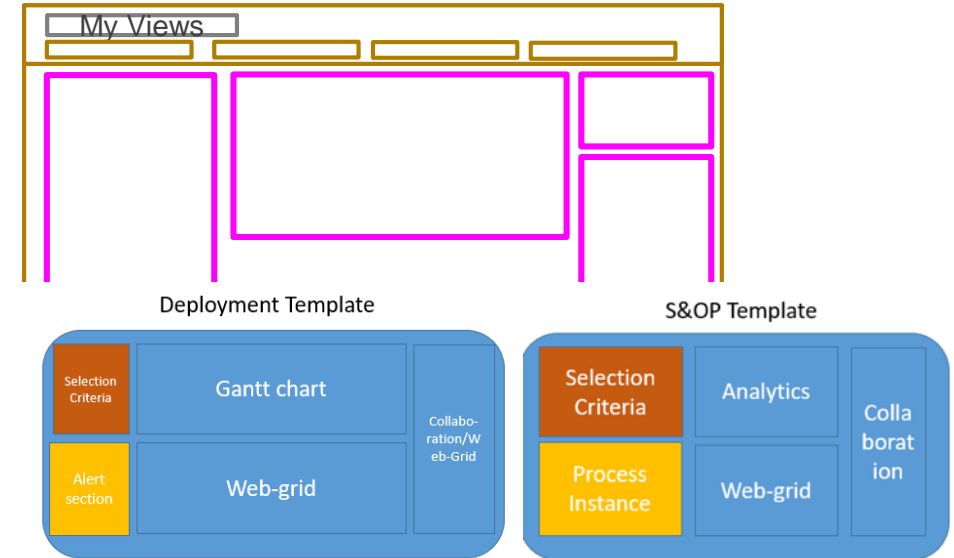
**Direct integration** of IBP and S/4 HANA embedded PP/DS to enable seamless business processes and integration capabilities in **real time**



# Synchronized Planning – Planner Workspace

Provides a unified workspace for planners to complete their job in a single configurable UI.

- **One consistent UI** across different planning steps across IBP and S/4 HANA embedded PP/DS
- Configurable to support **different business scenarios** (Deployment, Production, S&OP, etc.)
- **Different layout and components** for different scenarios (Alerts, Planning Views, Charts, PP/DS Gantt Chart)
- **High level of personalization** to support planner specific working style based
- **Interactivity** between components and features like filters that apply to all components on the screen
- System delivered **workspace templates**.
- **Cross system data visibility and scenario planning**



# Synchronized Planning – Planner Workspace

Planner's Workspace

Liquid Detergent, Germany - Deployment

Configurable and savable Views

Recalculate Promote Discard UoM: SU

Version/Scenario: Base version Planning Filter: Marcin's Value Stream Time Horizon: 7 Days Alert Subscription: Potential Cut Product: A Product Liq... 1 More Location: DC1 DC2 1 More

Adapt Filters (1) Go

**Alert Monitor**

Alerts (10)

- Potential Cut 50 SU
- Potential Cut 20 SU
- Potential Cut 13 SU
- Potential Cut 12 SU
- Potential Cut 11 SU
- Potential Cut 10 SU
- Potential Cut 10 SU
- Potential Cut 9 SU
- Potential Cut 3 SU
- Potential Cut 3 SU

**DC 10 Alerts**

Material	Location	Key Figure	Total	Today	Day +1	Day +2	Day +3	Day +4	Day +5	Day +6	Day +7
A Product - Liquid Detergent	DC2	Forecast Open									
		Sales Order (Requested)									
		Sales Order (Confirmed)									
		Safety Stock (Planned)									
		Maximum Stock									
		Distribution Receipt	200	0	0	200	0	0	0	0	0
		Stock Projected	0	0	0	-50	-50	-50	-50	-50	-50
	DC3	Forecast Open									
		Sales Order (Requested)									
		Sales Order (Confirmed)									
		Safety Stock (Planned)									
		Maximum Stock									
		Distribution Receipt	0	0	0	0	0	0	0	0	0
		Stock Projected	0	50	50	50	50	50			
	L21	Forecast Open									
		Sales Order (Requested)									
		Sales Order (Confirmed)									
		Safety Stock (Planned)									

**Transportation Lanes 10 Alerts**

Material	Source Loc	Target Loc	MoT	Key Figure	Today	Day +1	Day +2	Day +3				
A Product - Liquid Detergent	DC2	L21	Train	Distribution Demand (Lane)	0	0	0	150				
				Minimum Distribution Demand								
				Maximum Distribution Demand								
				Distribution Receipt (Lane; Confirmed)	0	0	0	0				
				Distribution Receipt (Lane; Deployment)	0	0	0	0				
				Distribution Receipt (Lane; Planned)	0	0	0	0				
				Minimum Distribution Receipts								
				Maximum Distribution Receipts								
						L22	Train	Distribution Demand (Lane)	0	0	0	100
								Minimum Distribution Demand				
				Distribution Receipt (Lane; Confirmed)	0	0	0	0				
				Distribution Receipt (Lane; Deployment)	0	0	0	0				
				Distribution Receipt (Lane; Planned)	0	0	0	0				
				Minimum Distribution Receipts								
				Maximum Distribution Receipts								
	DC3	L22	Train	Distribution Demand (Lane)	0	0	0	0				
Minimum Distribution Demand												

**Collaboration**

Hi Lea, Please could you help me with an urgent order? I need 500 SU by 11 am. Can you help me out? let me know asap, otherwise I'll have to ask my other counterpart.

Hi Marcin, So sorry, I'm unable to help. I just checked and we are not able to loan you.

Hello Felipe, I have a problem with an order. I need 500 SU pieces by 11 am. Can you help me out?

Hi Sales, Please could you talk to the customer? We will be able to deliver the complete order, there are some issues, we are short of about 500 SU.

**Transactional Exceptions**

**Planning and Simulation across IBP and Scheduling, Business network**

**Execute option in S/4HANA**

**Collaborate**

# Synchronized Planning – Planner Workspace

SAP Planner's Workspace

Liquid Detergent, Germany - Production

Version/Scenario: Base version | Planning Filter: Marcin's Value Stream | Time Period: 7 Days | Alert Subscription: Potential Cut | Product: A Product Liq... | Location: DC1, DC2

Alerts (5): Potential Material Shortage (500 SU), Potential Cut (250 SU), Potential Material Shortage (230 SU), Potential Material Shortage (190 SU), Potential Cut (190 SU)

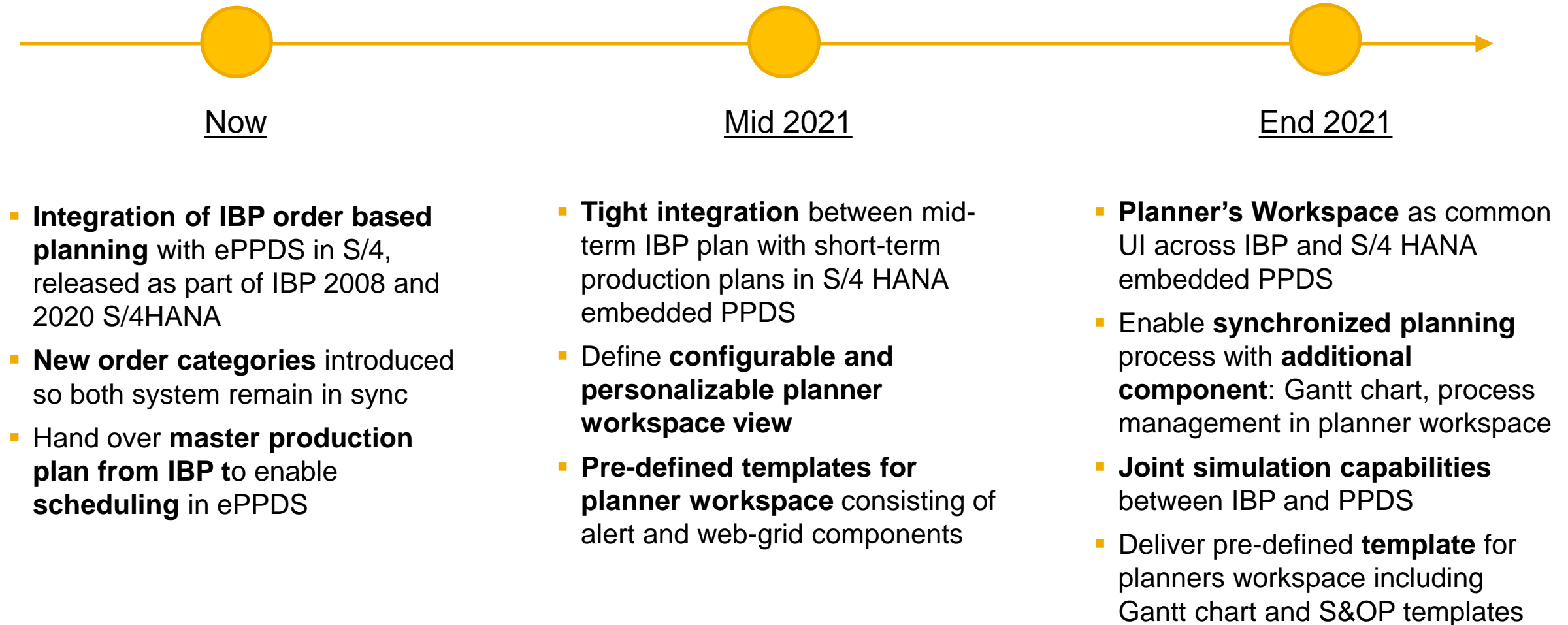
Production Plan: Show: Resources | Colored by: Cap Size

**S/4 HANA ePP/DS Gantt Chart**

Simulation Impact: 1. Change (New Value: 500)

Location	Material	Key Figures	Past Due	Today	Day +1	Day +2	Day +3	Day +4	Day +5	Day +6	Day +7
1	L21	A Product - Liquid detergent	Independent Requirements		700	200	300	400	400	500	600
2			Sales Order								
3			Dependent Requirement								
4			Incoming by Vendor	456	470	280	450	480	400	380	400
5			Supplier A	153	170	100	200	200	400	250	300
6			Supplier B	40	0	40	0	40	0	40	
7			Supplier C	243	300	100	250	200	0	50	100
8			Supplier D	20	0	40	0	40	0	40	0
9			Incoming Stock Transport Order (incl Requisitions)	0	0	0	0	0	0	0	0
10			Planned Shipment Plant ABC								
11			Planned Hot Trk Plant ABC	0	0	0	0	0	0	0	0
12			Planned Shipment Plant DEF	0	0	0	0	0	0	0	0
13			Planned Hot Trk Plant DEF	0	0	0	0	0	0	0	0
14			Total Prod Planned Order	500	600	600	600	900	800	900	1000
15			Total Plan Prod BUOM	1150	1380	1380	1380	2070	1840	2070	2300
16			Total Prod Confirmed Orders								
17			Total Prod Confirmed Orders BUOM								
18			Total Avail								
19			Total Inventory	300	130	320	150	420	400	520	600

# Synchronized Planning – Current and Future



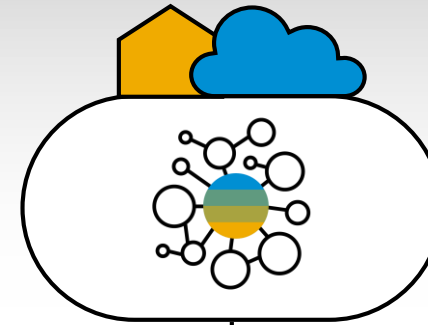
# SAP Digital Supply Chain Solutions for **Manufacture**

Digitally orchestrate manufacturing operations, resulting in better customer service levels, higher margins, lower Cost-of-Goods Sold, and higher return on assets

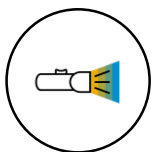
## Digital Manufacturing



**SAP S/4HANA Manufacturing**  
Production Engineering & Operations (PEO)  
Planning & Scheduling (PP/DS)  
Quality Management



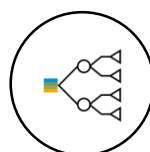
**SAP Digital Manufacturing Suite**  
**Digital Manufacturing Cloud**



Intelligent Visibility  
Across the Business



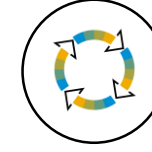
Machine to Machine  
Automation



Complete E2E Supply  
Chain Integration



Predictive Service &  
Maintenance



Flawless Supplier  
Collaboration

# Integrate and connect Engineering and Operations to meet Production requirements

## SAP S/4HANA for Manufacturing Production Engineering and Operations



Converts product design into production process design that is the basis for production order management and shop floor execution



Optimize engineering to manufacturing BOM's and manage routings and operations with 3D visuals, work instructions, and data collection parameters to gain process efficiency



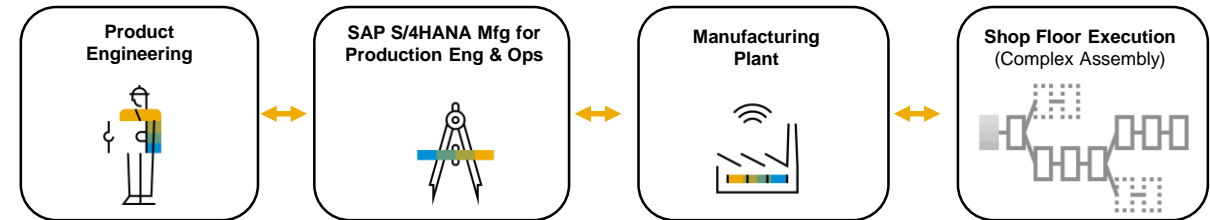
Manage and analyze the impact of change to minimize production disruption from revised routings, work instructions and production orders



Production Order Management & Control: including shop floor production activities, production monitoring for detecting exceptions, providing decision support and immediate actions



Extends Manufacturing Execution giving tools to manages work assignments, work queues, perform operations and activities and defect handling



Planning Scope Alternative 0001 for Material 1000-001-001-FLG-170001

Manage Work Center Queue

JWR\_WC01

Serial Number 3

Perform Operation Activity

Tire Mounting (P60)

Type: Produce Material: 0001-001-012-FLG-170001 Serial Number Status: In Process  
 Operation: 0010 (Landing Gear-Assembly) Material description: Forward Landing Gear  
 Order: 1010699 Work Center: DM0\_LGA (Work center)

Components	Total Quantity	Consumed Quantity	Status
0001-001-012-TR-3224 Tire	1 EA		Backflushed

Data Collection

Characteristics (1)

Inspection Object	Inspection Results	Status / Valuation	More Details
Tire Pressure Check (0010) Required Characteristic	Mean Value (PSI): 0.0	Must Be Processed <input checked="" type="checkbox"/> <input type="checkbox"/>	

PRT

PRTs	PRT Type	Quantity
PG_200_PSI	Material	1 EA
PG_400_PSI	Material	1 EA

Instructions

3D Viewer Work Instructions

Inspecting Mounted Tires:

- Use the correct tire and tube for the wheel assembly.
- Inspect the tube, looking for cuts or cracks.
- Inspect the inside of the tire, and remove stickers.
- Clean the bead base with a cloth dampened with denatured alcohol. Allow bead seat area to dry.
- Clean inside of tire, then lubricate lightly with talc.
- Inflate tube to slightly round, and insert in tire.
- Align valve on tube with red balance dot on tire.
- When mounting tire and tube on wheel, be sure that wheel bolts are torqued per the instructions before inflating.
- Inflate tire in a safety cage to rated pressure using dry nitrogen or shop air; comply with FAR 25.733.
- Deflate assembly to equalize stretch.
- Reinflate to rated pressure.

# SAP Digital Manufacturing Cloud

Automate processes and resources to improve manufacturing efficiency, quality and productivity



Paperless production with intuitive user interfaces for production operators, automatic data collections and set machine parameters, thereby lowering cost, increasing productivity and quality.



Design, distribute and dynamically control manufacturing shop floor activities enabling a smart factory.



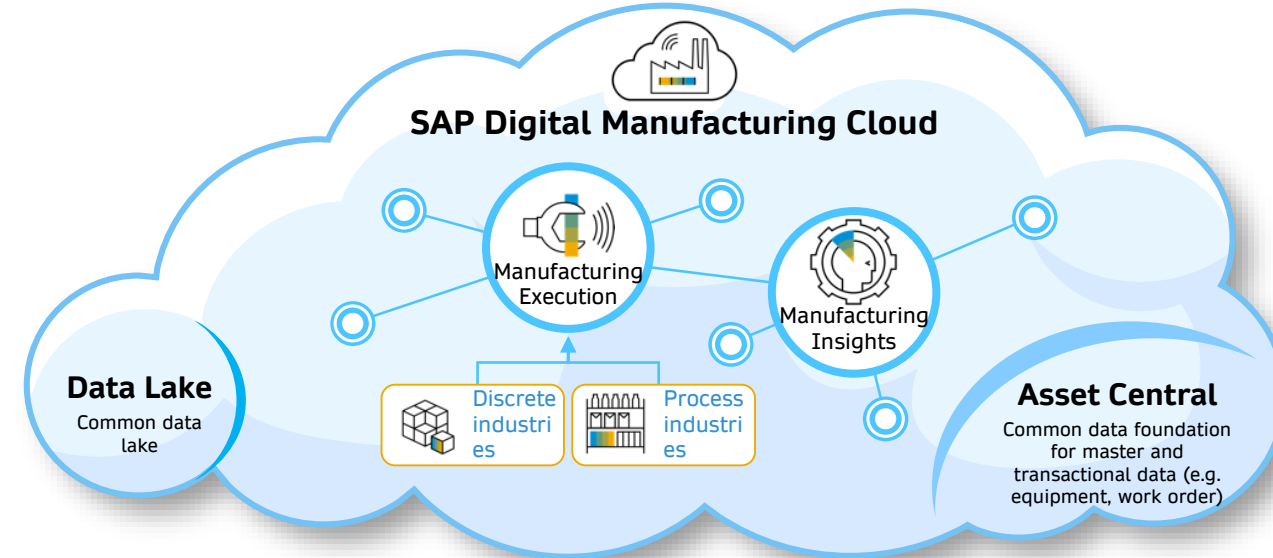
Shift and Labor planning to ensure business operations with right qualifications. Production Order scheduling and dispatching considering labor, resource and maintenance constraints to plan operations and adopt to short term changes.



Cross plant real-time analytics for manufacturing performance e.g. Perfect Order Fulfillment, Overall Equipment Effectiveness, loss analysis along with machine data to identify improvement opportunities.

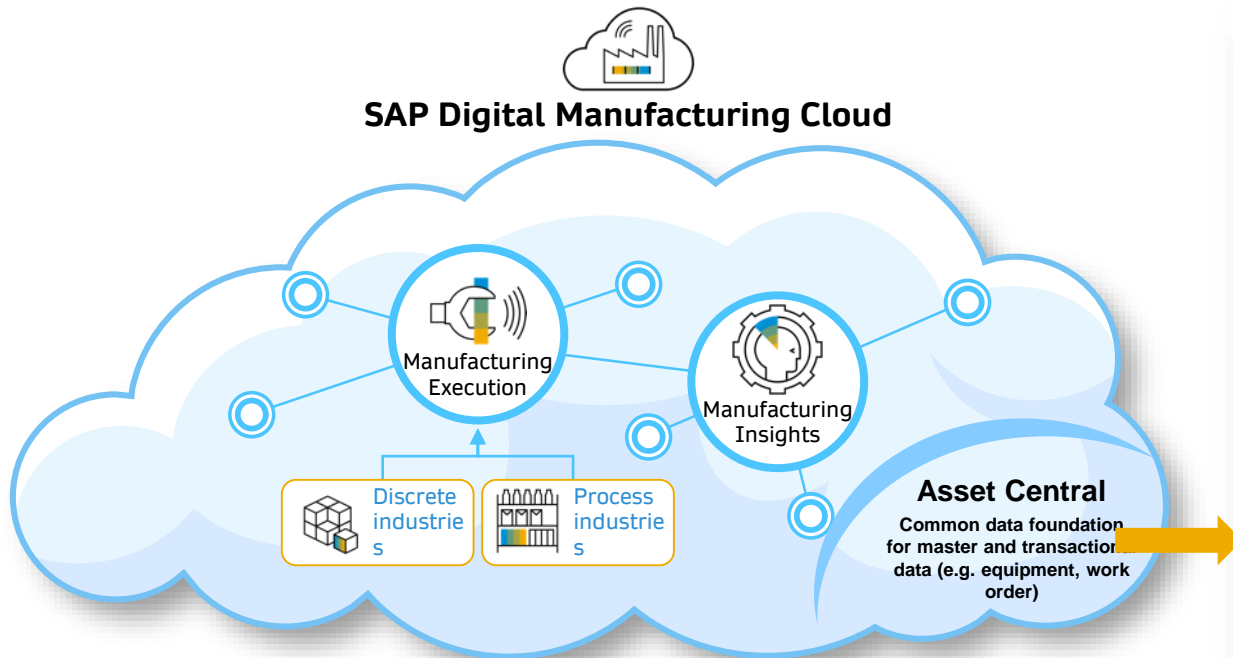


Ability to collect and share product genealogy data between members of the network to trace accountability and provide transparency.



# SAP Digital Manufacturing Cloud

## Machine Model & Shop Floor Integration (with Asset Central)



### Define Equipment/Machine

PaintingRobot  
Painting\_Robot

INFORMATION | STRUCTURE & PARTS | DOCUMENTATION | MONITORING | MAINTENANCE & SERVICE | ANALYTICS DASHBOARD | TIMELINE

Equipment Information

Serial Number: L34R20	Manufacturer Part Number: PR-1059	Location: <a href="#">ATLocation</a>
Equipment Tag Number:	Model ID:	Installation Date:
Batch Number:	Subclass:	Tag Number:
Technical Identification Number: E4566790101	Build Date: Jan 1, 2019	Designed Operating State:
Operator Equipment ID:		Criticality / Safety Risk:
Procurement Number:		
Long Description: Car Assembly Paint Robot		

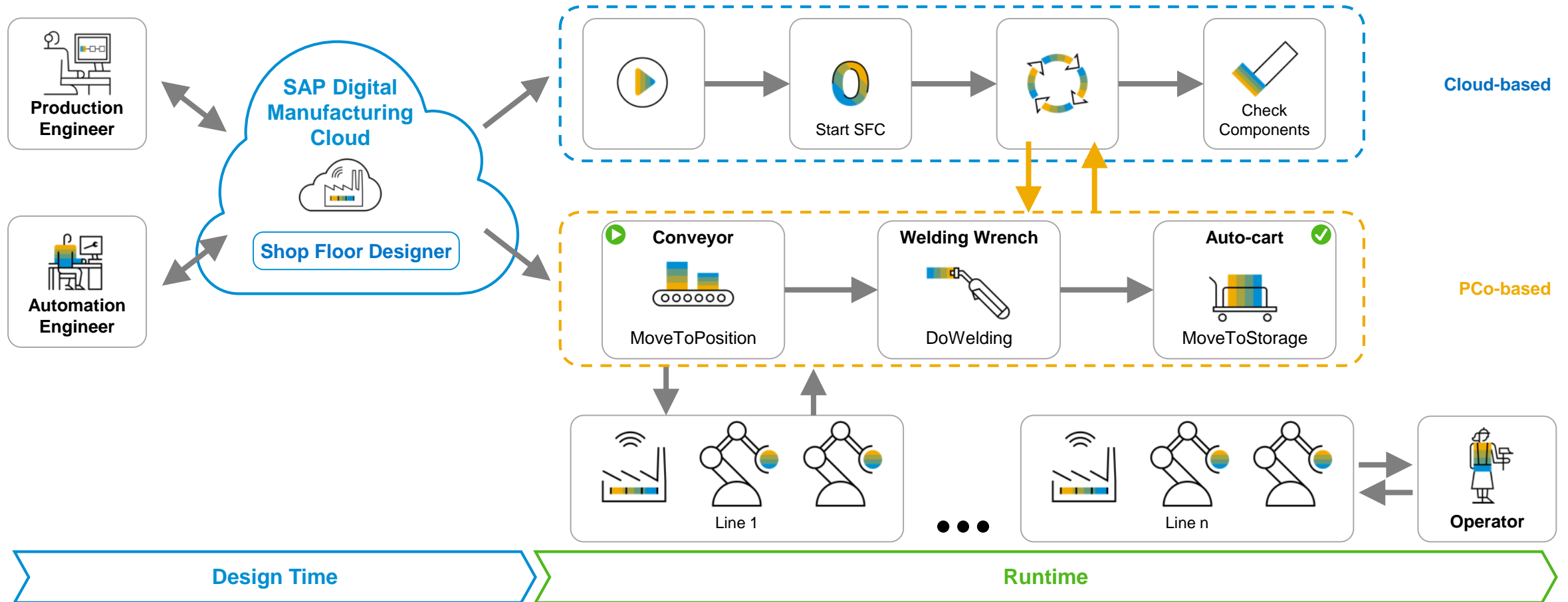
- Model the digital twins of machines in the plant based on industry standard class, sub class, model and equipment template as per the OEM specification
- Capture the capabilities of the machines as well as communication interfaces
- Simplified onboarding of Machine object with connection to the shop floor
- Simplified machine integration by abstracting the technical aspects of machine configuration with remote configuration of Plant Connectivity (PCo)



# SAP Digital Manufacturing Cloud

## Machine and Process Orchestration – Shop Floor Designer

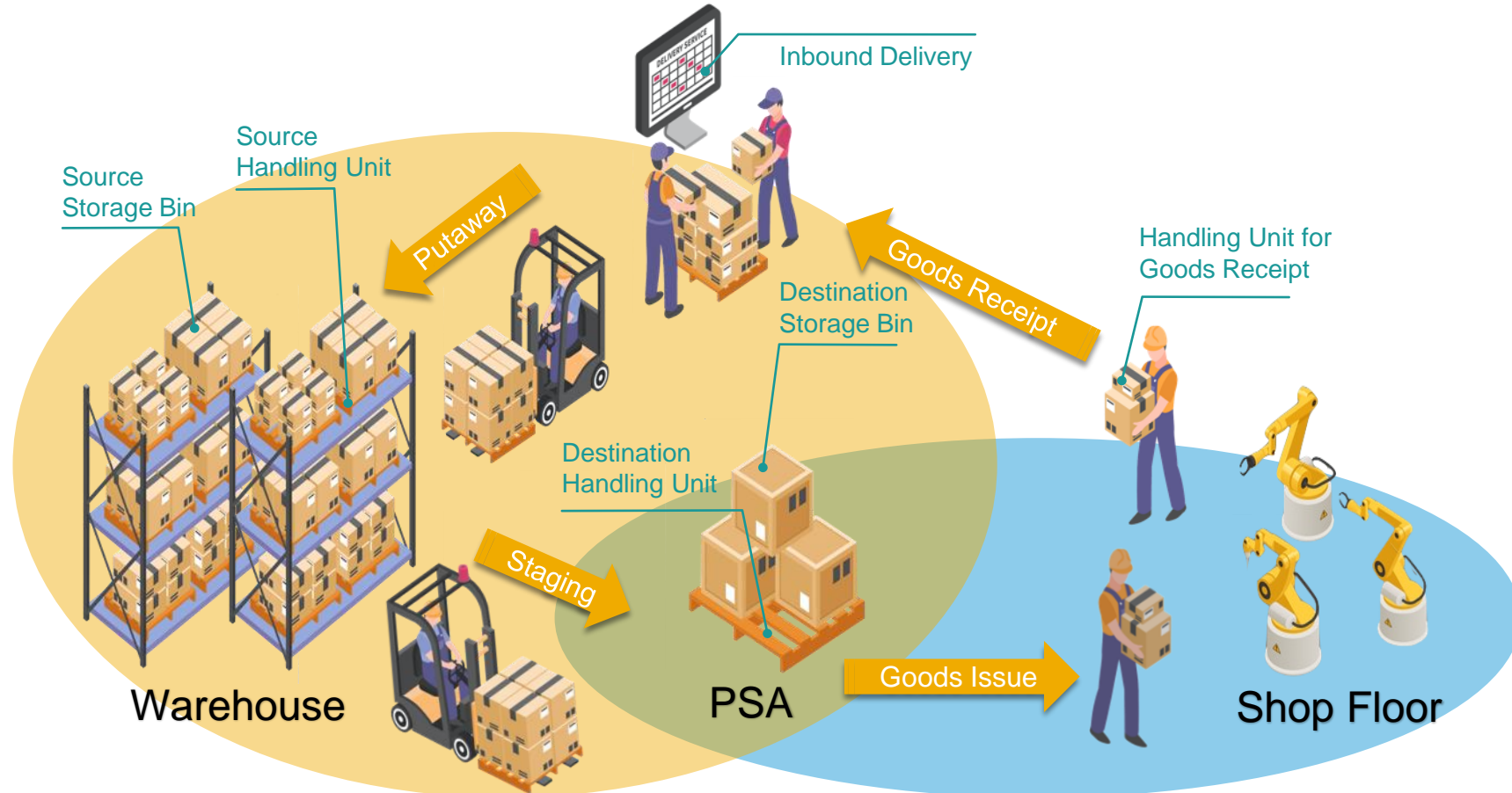
Design the optimal manufacturing process flow integrating MES system with machine orchestration and easily deploy it throughout the different SAP runtimes (on the cloud and different SAP Plant Connectivity instances)



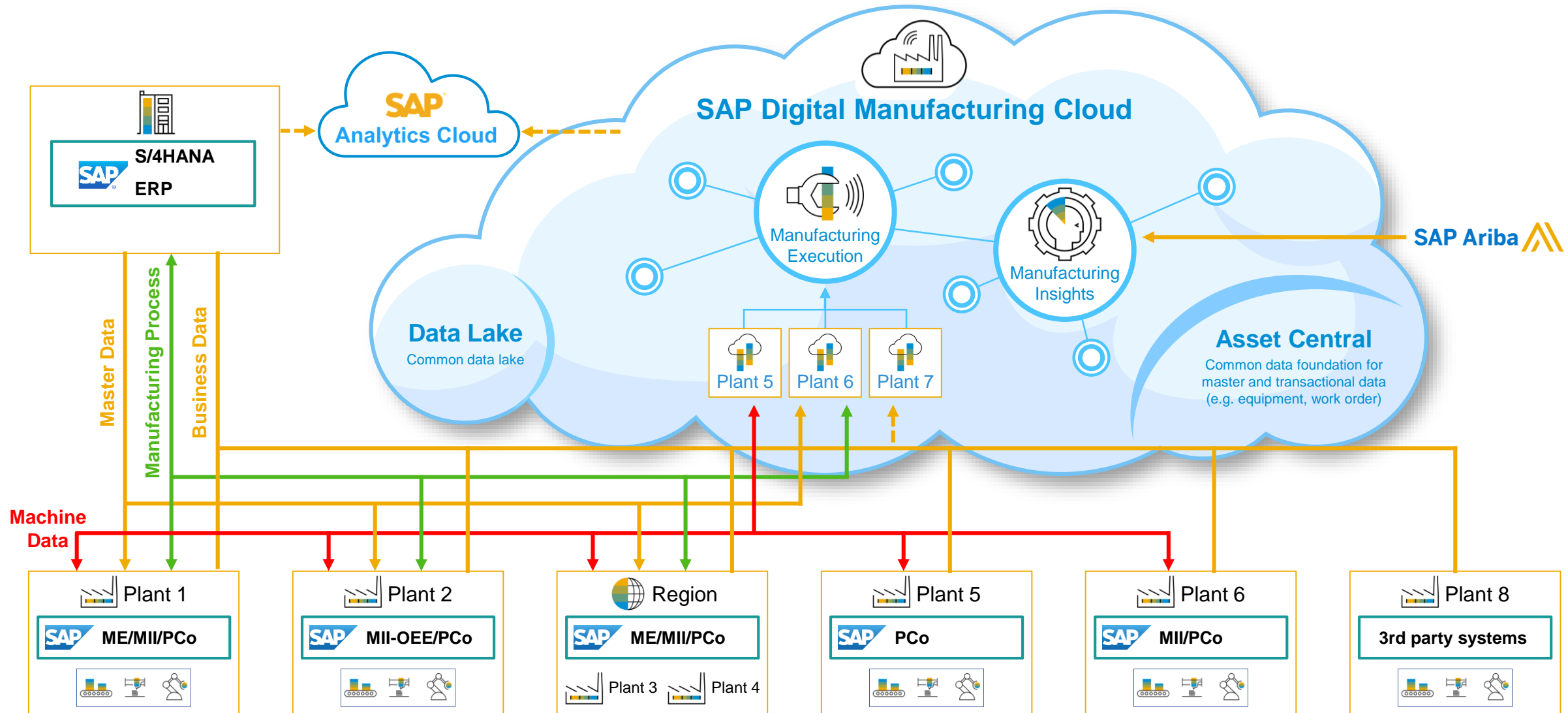
# SAP Digital Manufacturing Cloud for Execution

## Extended Warehouse Management (EWM) Integration

- The ERP integration has been enhanced to enable scenarios related to integration with EWM and shop floor inventory in DMCE:
  - **Single Order Staging Request** provides for sending a request for the components to be staged for a specific order. You can stage packed or unpacked materials pallet-wise (handling unit after handling unit) from a warehouse managed with SAP Extended Warehouse Management (EWM) to a production supply area (PSA).
  - **Single Order Staging Confirmation** will allow the transfer of shop floor inventory data from SAP EWM to SAP DMCE when the warehouse task of component staging is confirmed by the warehouse operator in SAP EWM.
  - **Component Consumption to EWM** supports the reporting of Component Consumption w/o yield/scrap confirmation directly to SAP EWM.
  - **Goods Receipt Upon Packing Unit Completion** will transfer a goods receipt message from DMCE to SAP EWM.



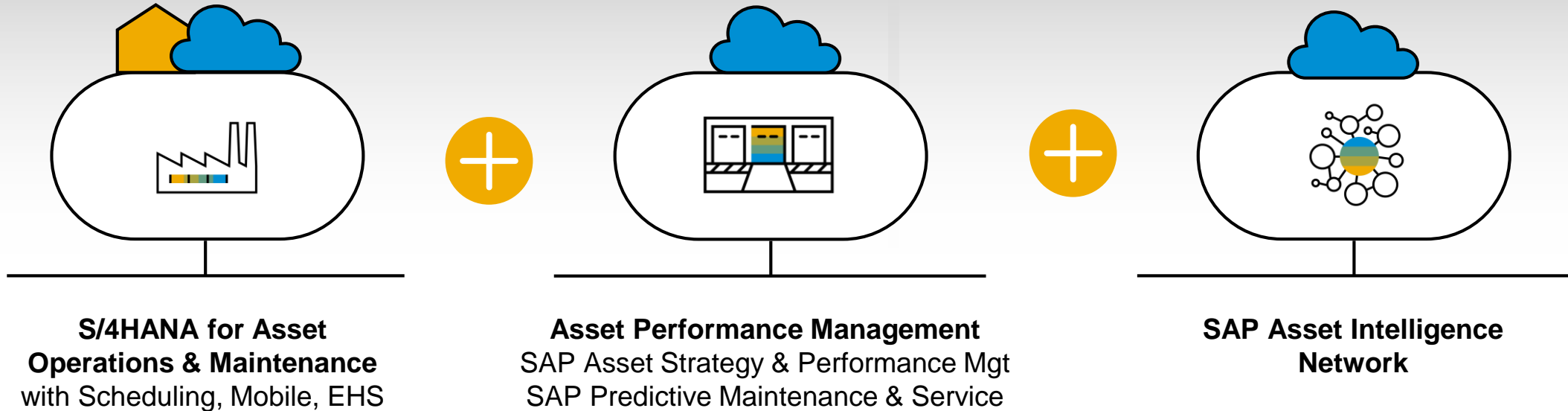
# Example for Hybrid Digital Manufacturing Landscape



# SAP Digital Supply Chain Solutions for Operate

Connects people and processes across the enterprise and networks, and connects them with assets through Industry 4.0

## Intelligent Asset Management



### Manage NEW Business Models

From...

**Selling equipment**

**Untrusted** asset information

**Limited** analytical capabilities

**Reactive** maintenance

To...

**Pay per use** / equipment as a Service

**Collaborative** Single source of truth

**Real time analytics** with simulation

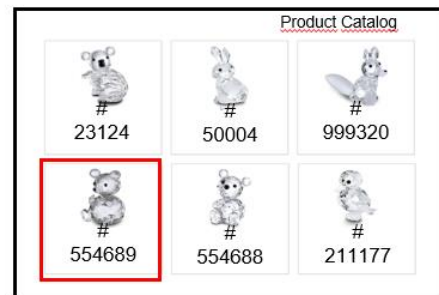
**Prescriptive** maintenance

# Applied Machine Learning:

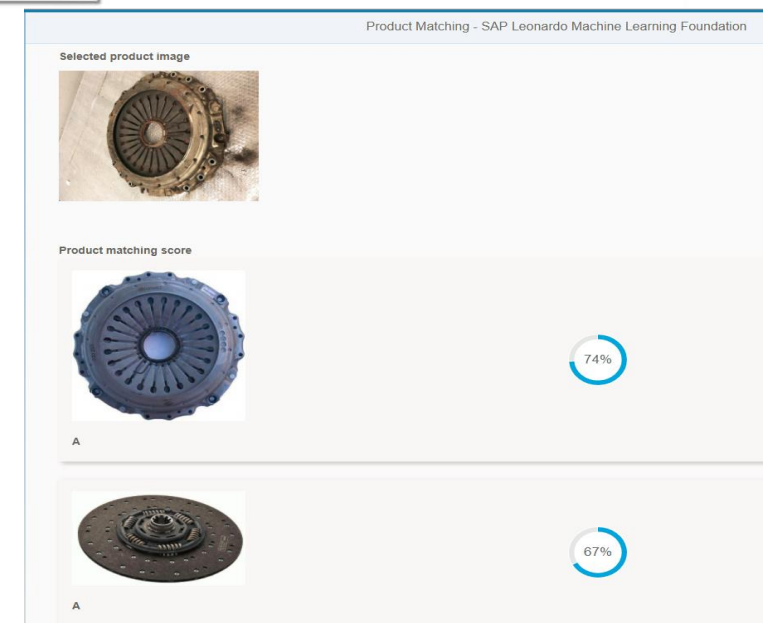
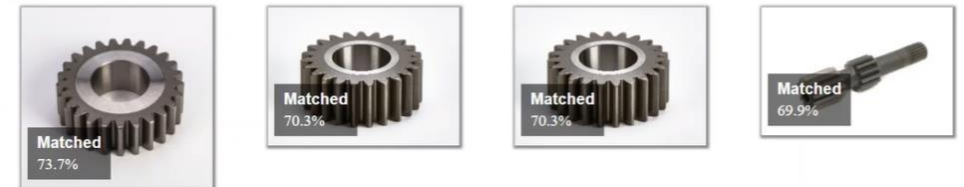
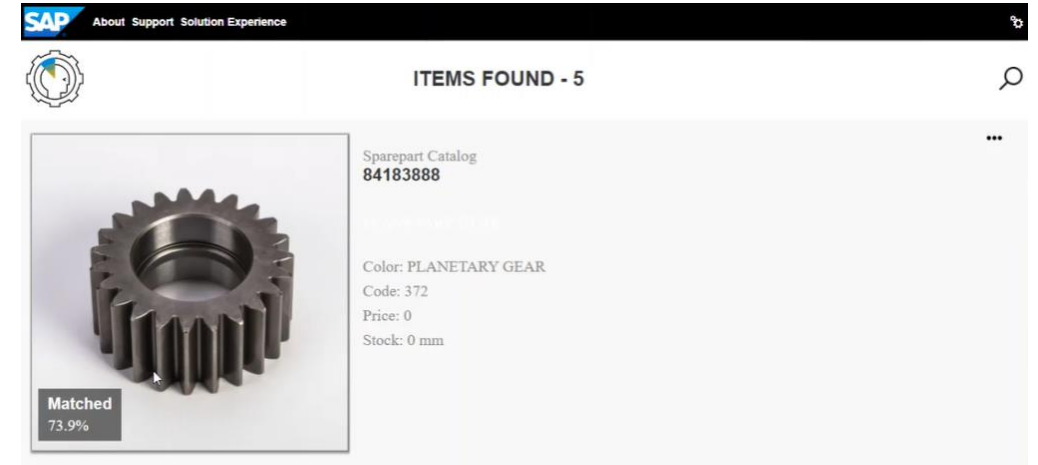
## Spare Parts detection

Identification of products/materials on images is relevant in

- Customer service/repair centers,
- Online shops,
- Maintenance (identification of spare parts).



Recommendation



# Spare Parts Detection:

example based on Railway Company

## Objective:

The mechanic/field worker has an application on his mobile device

- 1. Take a picture of the broken spare part
- 2. The app identifies product on the picture
- 3. Suggest a list of identical materials (plus additional information like short description and catalog pictures)

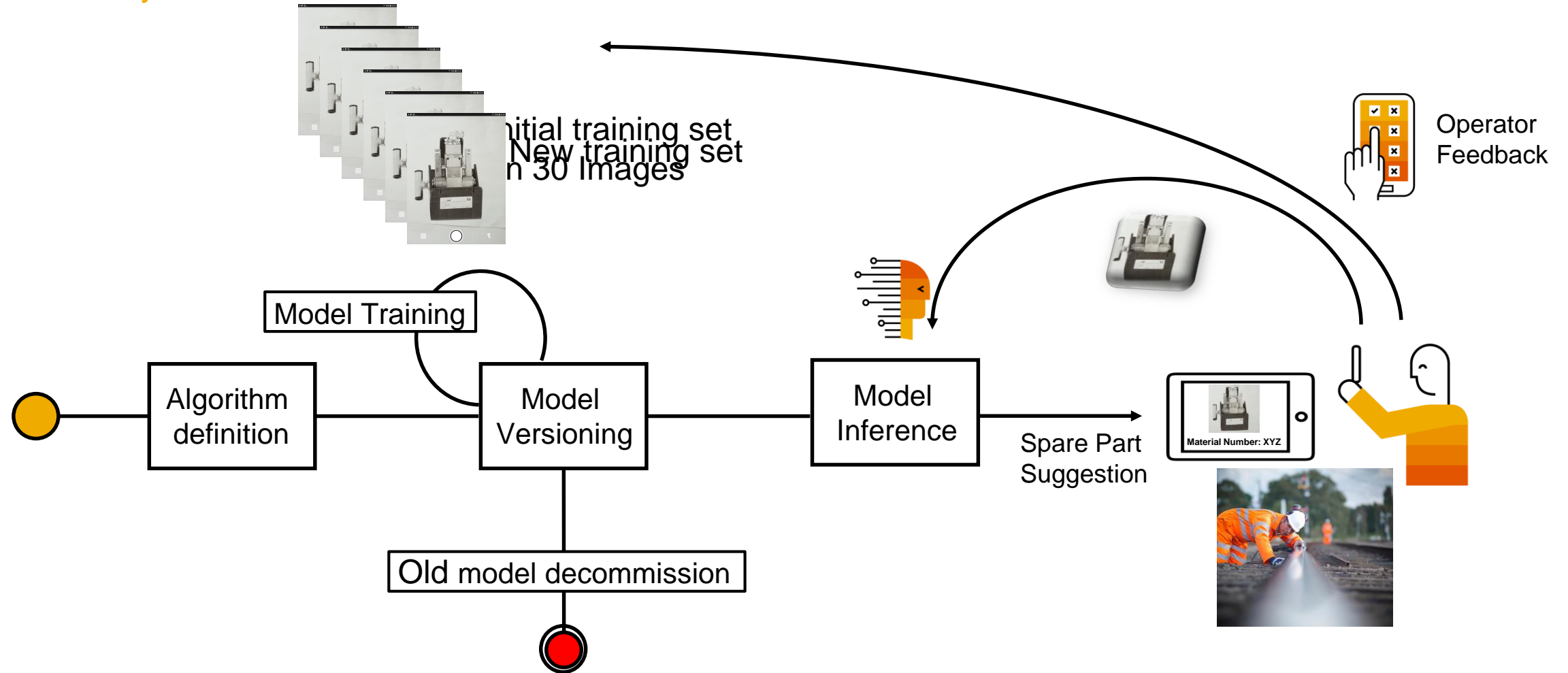


## Outcome:

Less orders with wrong materials,  
Faster identification of spare parts,  
Shorter maintenance times.

# Spare Parts Detection:

## Model LifeCycle

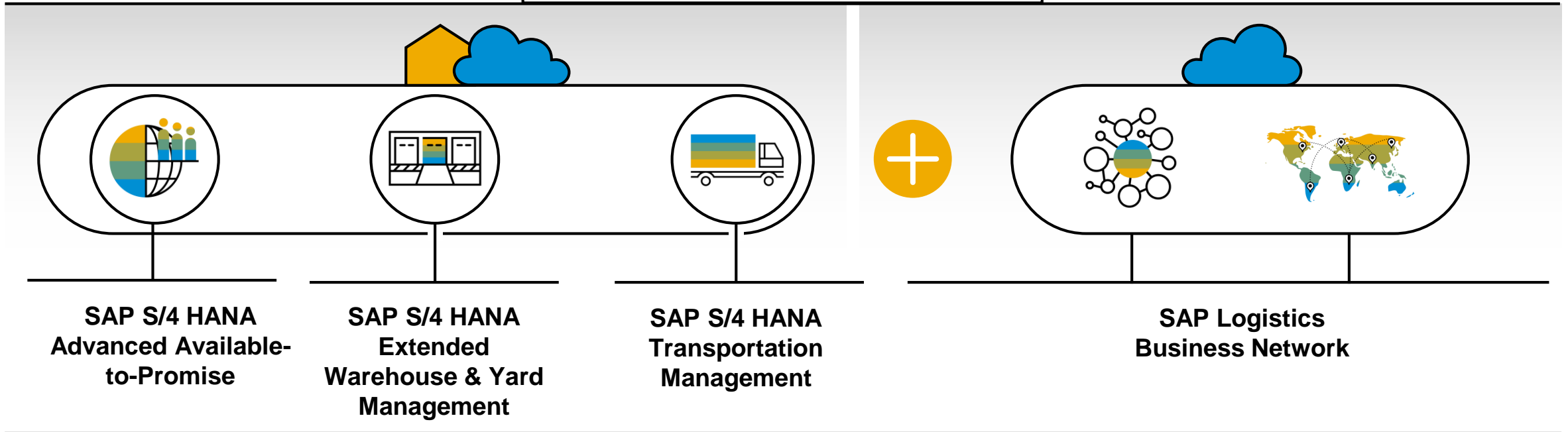


- 30 Images were enough for the initial Model Training
- With 100 Images the model is able to recognize the spare part with appropriate reliability

# SAP Digital Supply Chain Solutions for Deliver

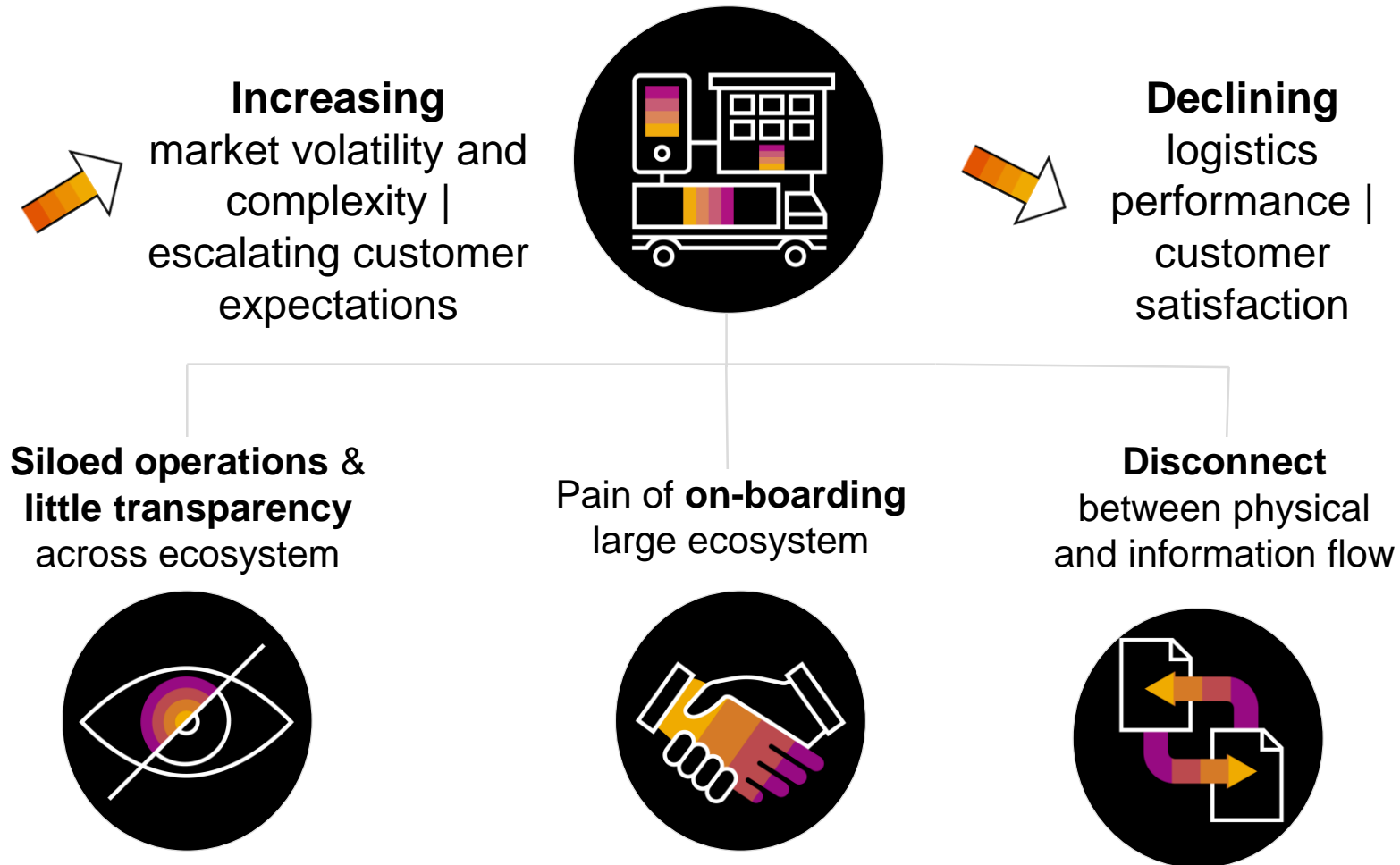
Enables just-in-time consumption creating the product experience by making delivery part of the promise

Digital Logistics Real-time Data





# Challenges and trends in logistics



By 2020, **half of the large manufacturers** will have begun shifting their supply chain applications from enterprise centric to **network centric**, driving **productivity** gains of 2 percentage points

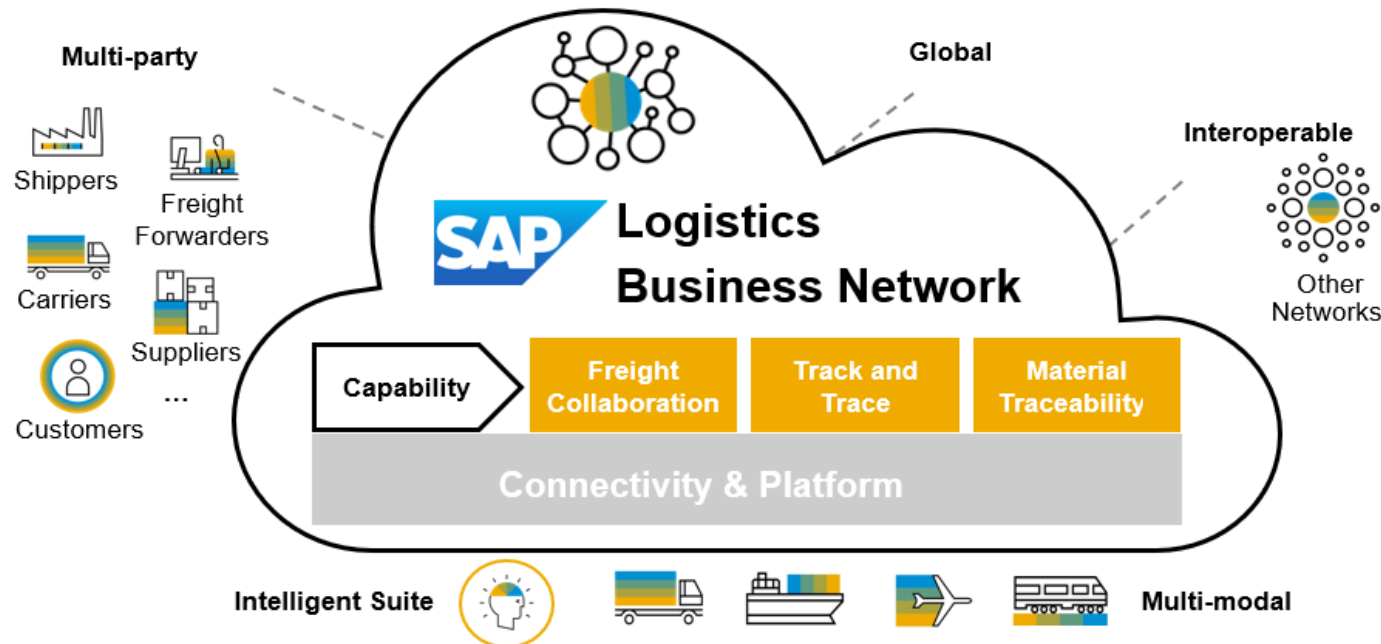
IDC FutureScape:  
Worldwide Supply Chain 2019 Predictions  
Oct 2018 - - Doc # US44376118

# SAP Logistics Business Network

## Mission and value proposition

SAP Logistics Business Network is an open, secure **multi-capability** and soon **multi-modal** network connecting business partners for inter-company logistics collaboration.

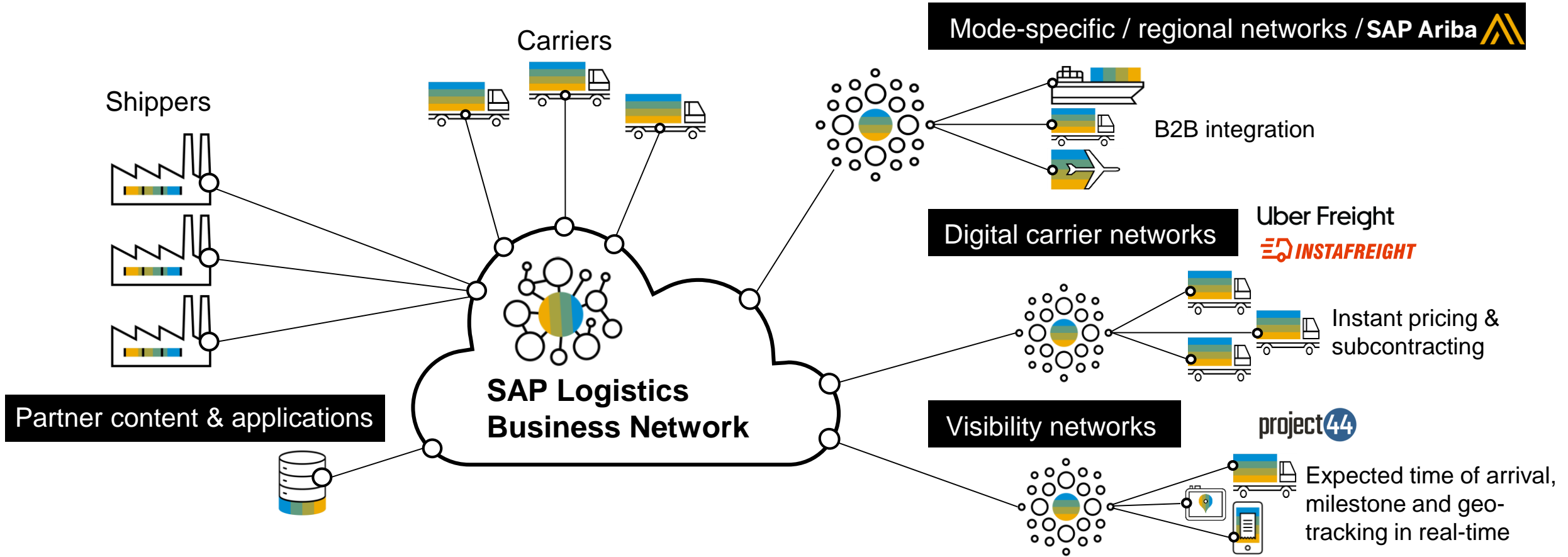
In tight integration with the relevant business processes, it allows companies jointly managing logistics transactions and gaining insights across the complete value chain.



- **Onboard** once and collaborate with many, globally and anytime
- **Connect** businesses (B2B) and things (B2T) to harness technologies of the intelligent enterprise
- **Break** up silos of operation to manage freight more efficiently
- **Benefit** from situational awareness and eased decision making through Track & Trace data, combined with IoT insights.
- **Create** a trust chain by leveraging blockchain-based material traceability for up- and downstream product genealogy

# SAP Logistics Business Network openness\*

Extend the reach and accelerate innovation with established partner services

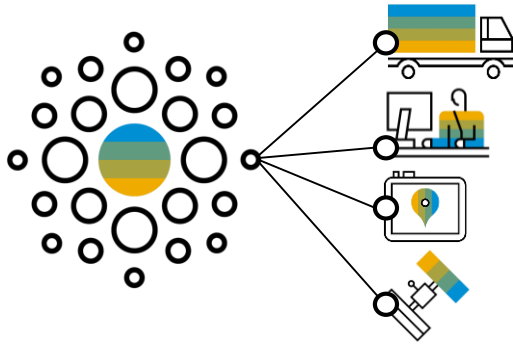


\* as per roadmap

**Multi-network and partner collaboration for end-to-end logistics execution**

# Why project44?

## World-leading, global transportation visibility content provider



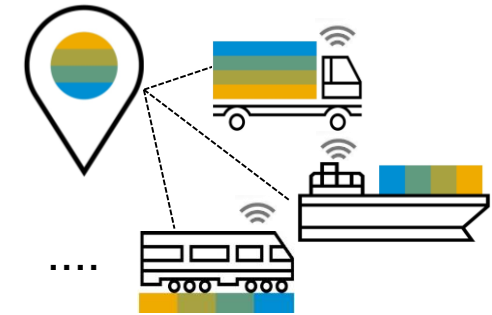
### Extensive Network

- Thousands of carriers
- 600+ global telematics / ELD device integrations
- 92% of telematics providers connected
- DriveView mobile app for freight documents digitization



### Global Coverage

- 48+ countries
- Multi-lingual carrier support

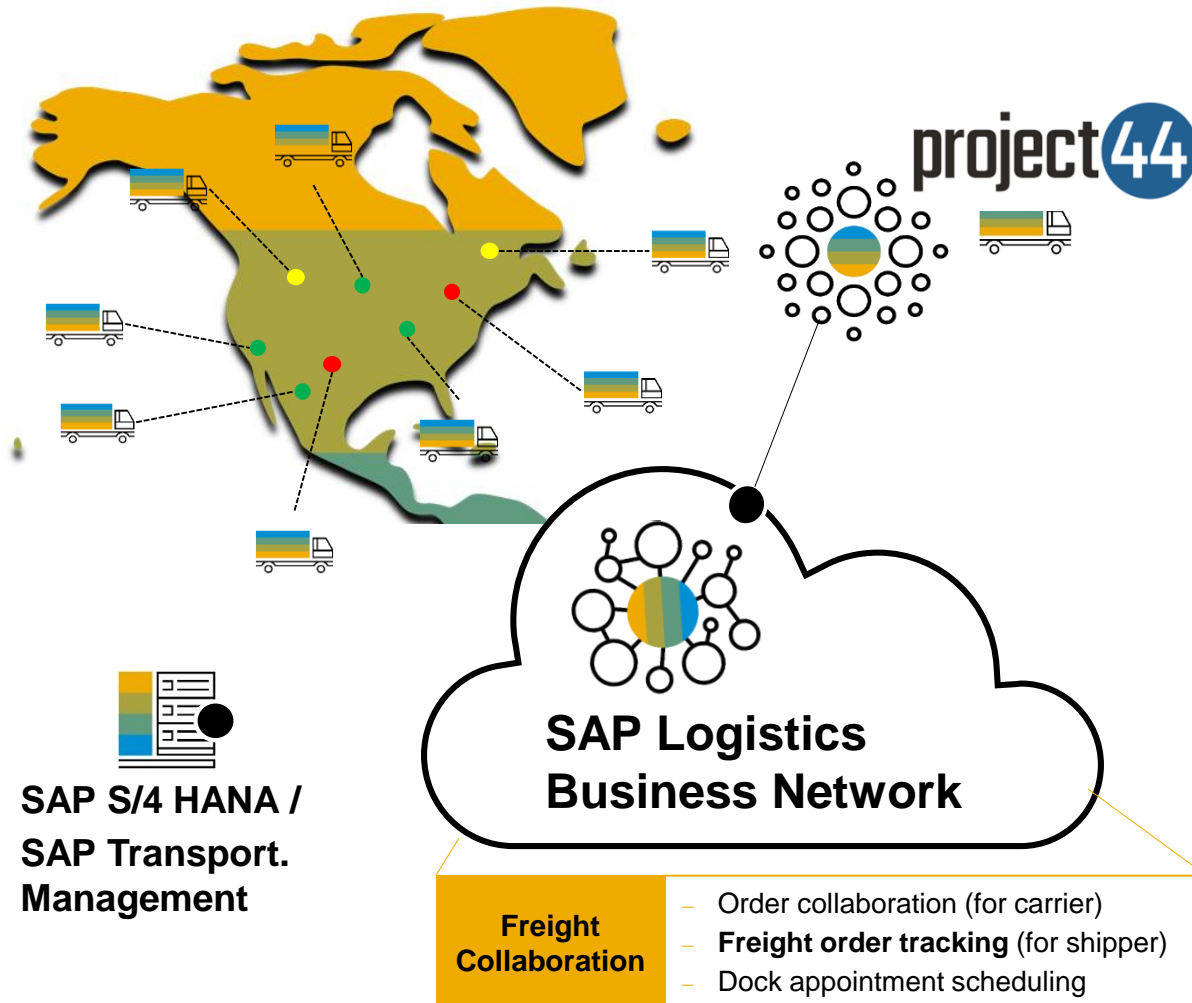


### Multi-mode Visibility

- Real-time shipment tracking
  - Truck (NA & Europe); Ocean (Global); Rail (North America) Air (planned)
- High quality, normalized, cleansed & enriched data
- Access to 8.5M+ vehicles worldwide

# Freight collaboration scenario:

Traceability and Visibility: Extended Network, SAP LBN and Project44



## How

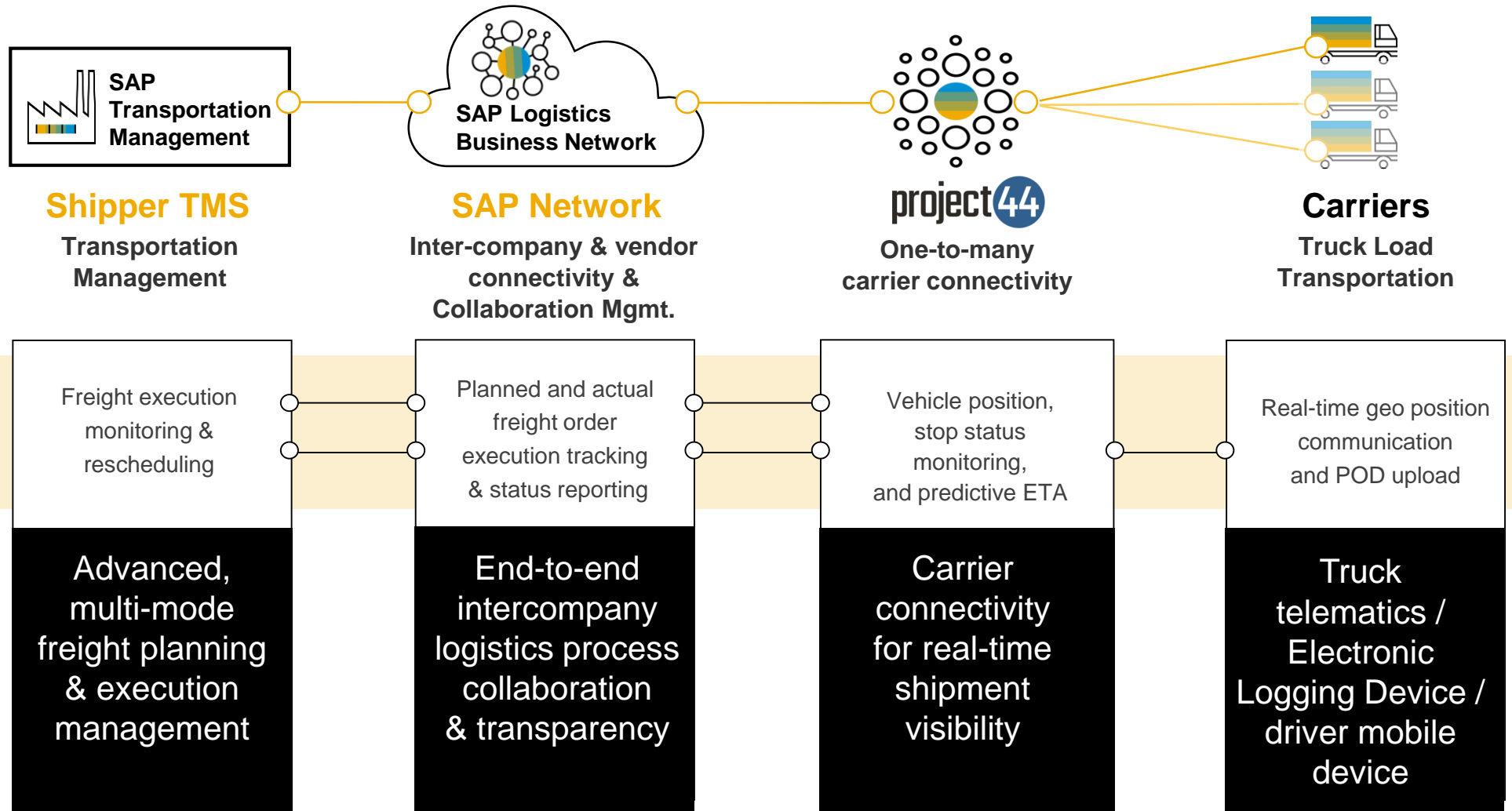
- B2B connectivity for real-time shipment visibility
- Complement milestone tracking by exact geo position, allowing for automatic business event detection
- Leverage **real-time, predictive ETA considering actual traffic and other conditions**

## Benefits

- Keep control of transportation processes even though these have been outsourced
- Offer a holistic and consistent experience
- Allow for real-time transportation planning
- Support evolution **from a reactive to a predictive supply chain**
- Increase customer service level whilst decreasing costs

# SAP and Project44 Integration Scenario Overview

Real-time visibility for full truck load truck transportation



# Freight collaboration scenario:

## Project44 data integrated to SAP S/4HANA for Transportation Management

### Embedded project44 real-time data:

Actual shipment location, transportation route, event status, estimated time of arrival (ETA)

#### General Information

6100035147 Arrived at Intermediate Location | Delayed

Source Location: Chicago Best Vineyards  
Destination Location: WireTec Industries

Next Stop: WireTec Industries  
ETA: 2:21:42 PM EST (3:38:38)

ETA for next stop

#### Execution Flow

General Information | Execution Flow | Map View

Departure (Overdue)  
Planned At: Aug 19, 2019, 8:21:57 PM CET

Arrival (Overdue)  
Location: Description\_LocationId  
Planned At: Jul 25, 2019, 3:00:00 PM CET  
Actual At: Jul 25, 2019, 3:00:00 PM CET

Event status & Actual timestamp

#### Map View

Legend: Location, Source, Intermediate Stop, Destination, Current, Event, Route (Actual, Planned), Status (Exceptional, Normal)

Current Location: WireTec Industries  
Planned Arrival At: May 8, 2019, 5:00 PM EST

Current location & actual route



# General Information

Full freight order details with shipment status and next stop estimated time of arrival (ETA)

6100035447 Arrived at Intermediate Location Delayed

<b>Source Location</b> Location: <a href="#">Chicago's Best Vineyards</a> Address: Chicago's Best Vineyards, 225 S Canal St, Chicago Illinois 60606, United States Planned Departure At: Sep 7, 2019, 4:30 PM CST	<b>Destination Location</b> Location: <a href="#">WireTec Industries</a> Address: WireTec Industries, 6205 Blue Lagoon Drive, Miami Florida 33126, United States Planned Arrival At: Sep 8, 2019, 5:52 PM CST
--	--

**Next Stop**  
**WireTec Industries**  
ETA: Sep 12, 2019, 4:00:01 PM EST  
+ 3d 10h

**Events by Status**

	Planned	6
	Exceptional	4
	Reported On Time	0

[General Information](#) [Execution Flow](#) [Map View](#)

<b>Carrier:</b>	<b>Number of Unloading Stops:</b> 1	<b>Vehicle:</b>
<b>Means of Transport:</b>	<b>Number of Loading Stops:</b> 1	<b>Registration Country or Region / Number:</b> AD / ERWERWQ
<b>Shipping Type:</b>	<b>Number of Visits:</b> 3	<b>Cargo Weight:</b> 80.00 KGM
<b>Traffic Direction:</b>	<b>Planned Total Distance:</b> 1,915.18 KMT	<b>Cargo Volume:</b> 2.00 MTQ
<b>Incoterm:</b>	<b>Planned Gross Duration:</b> 1 day 0 hours 22 minutes	<b>Cargo Quantity:</b> 1.00 C62
<b>Dangerous Goods:</b> Yes	<b>Planned Net Duration:</b> 23 hours 56 minutes	

Predicted estimated time of delivery

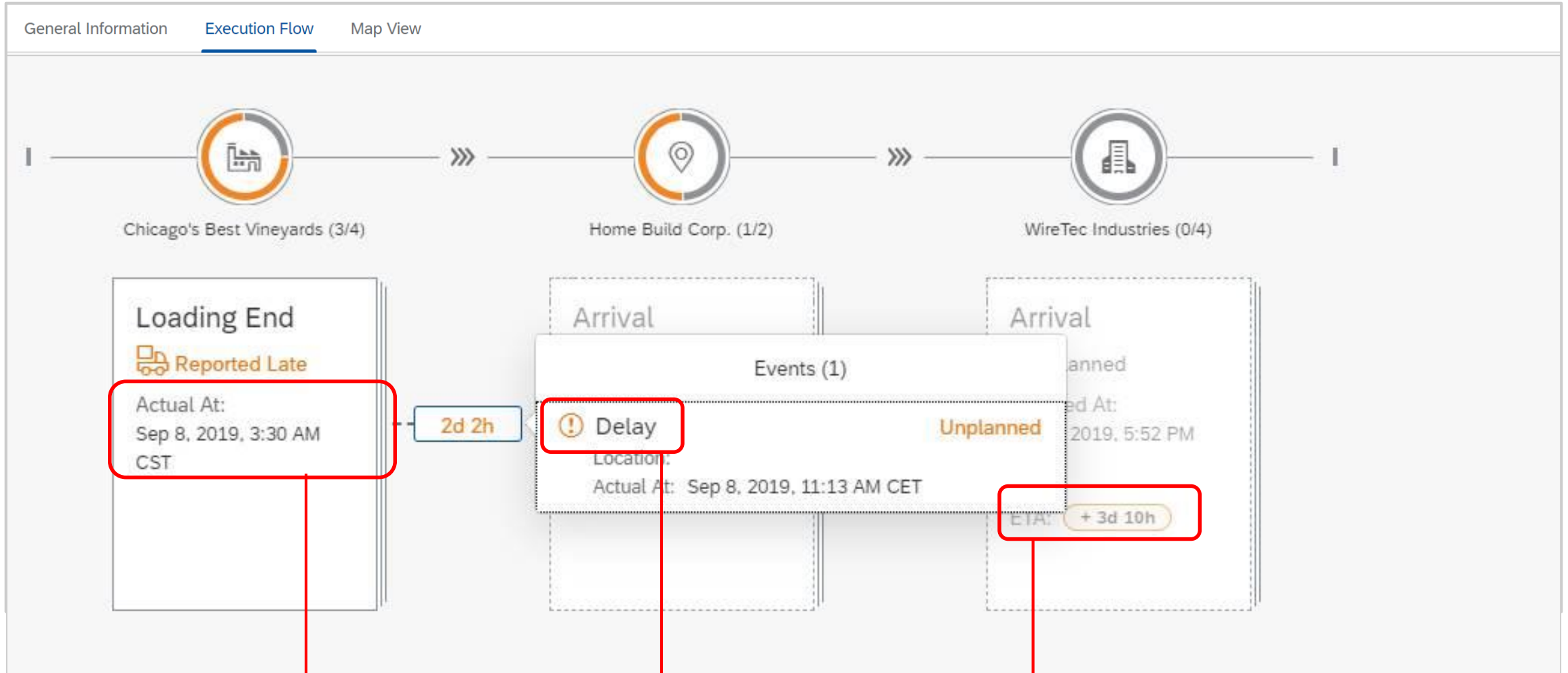
© 2020 SAP SE or an SAP affiliate company. All rights reserved. | PUBLIC

56



# Execution Flow

## Execution progress monitoring with planned & actual stop events



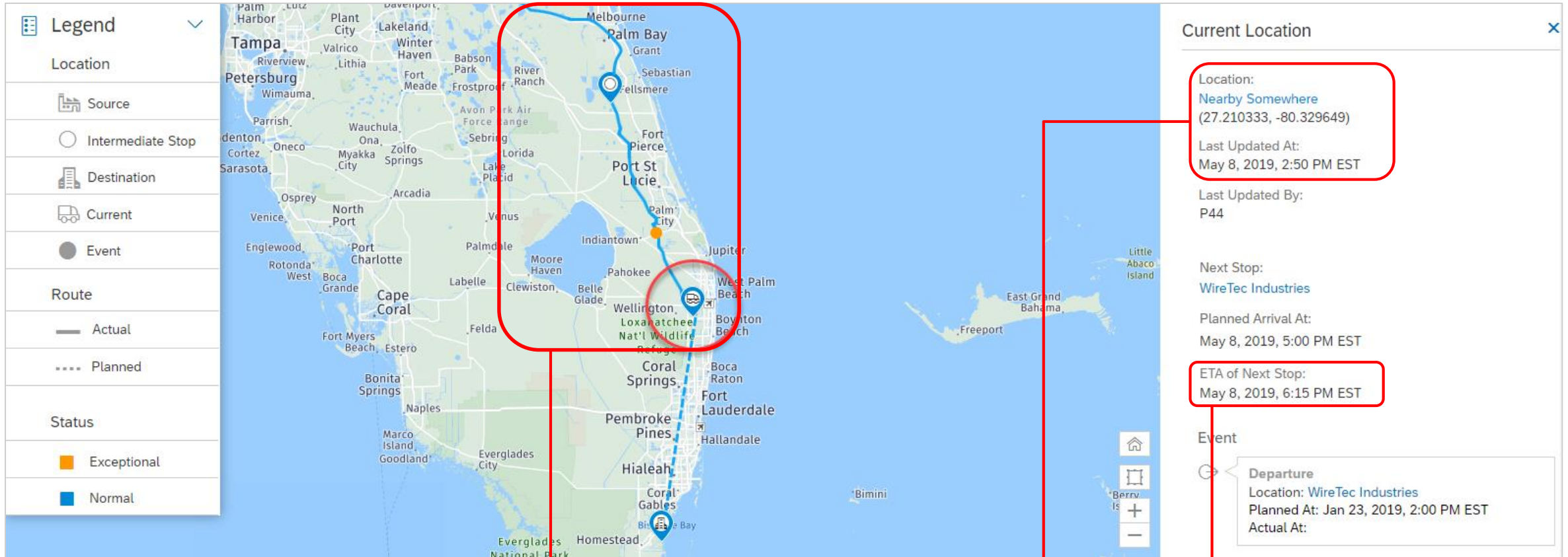
Actual event date / time stamp

Actual event status

Next stop ETA

# Map View

## Map-based shipment monitoring with event status & shipping route tracking



Next stop predicted ETA  
(Estimated Time of Arrival)



Actual transportation route & location  
(from 15 minute location updates)

Current shipment location (every 15 mins)  
(Geo-coordinates & timestamp)

# Need to move from linear, siloed systems to network-centric system

*Linear, siloed systems*



*Network-centric system*



## Partner Mgmt. & Connectivity

- Enterprise responsibility
- One-to-One / One-to-Many
- Multiple custom integrations



- Network managed
- Many-to-Many
- Standardized integration

## Visibility & Insights

- Limited visibility
- High information latency
- Siloed insights



- End-to-end visibility
- Real-time information
- Comprehensive insights

## Collaboration & Response

- Limited collaboration
- Delayed response
- Unsynchronized responses



- End-to-end collaboration
- Real-time response
- Coordinated response

**4% to 6%** increase in revenue\*  
due to increase in the level of demand fulfilled

**7% to 20%** decrease in cost\*  
due to reduced manufacturing, warehousing, distribution, and IT costs

**15% to 30%** decrease in working capital\*  
due to better response to demand and supply fluctuations

\*BCG report on Turning Visibility into Value in Digital Supply Chains, 2018

# SAP Digital Supply Chain **Network** Solutions

## **Design Network**

Collaborate with your design partners and suppliers

## **Ariba Network**

Collaborate with your n-tier suppliers of raw materials

## **Manufacturing Network**

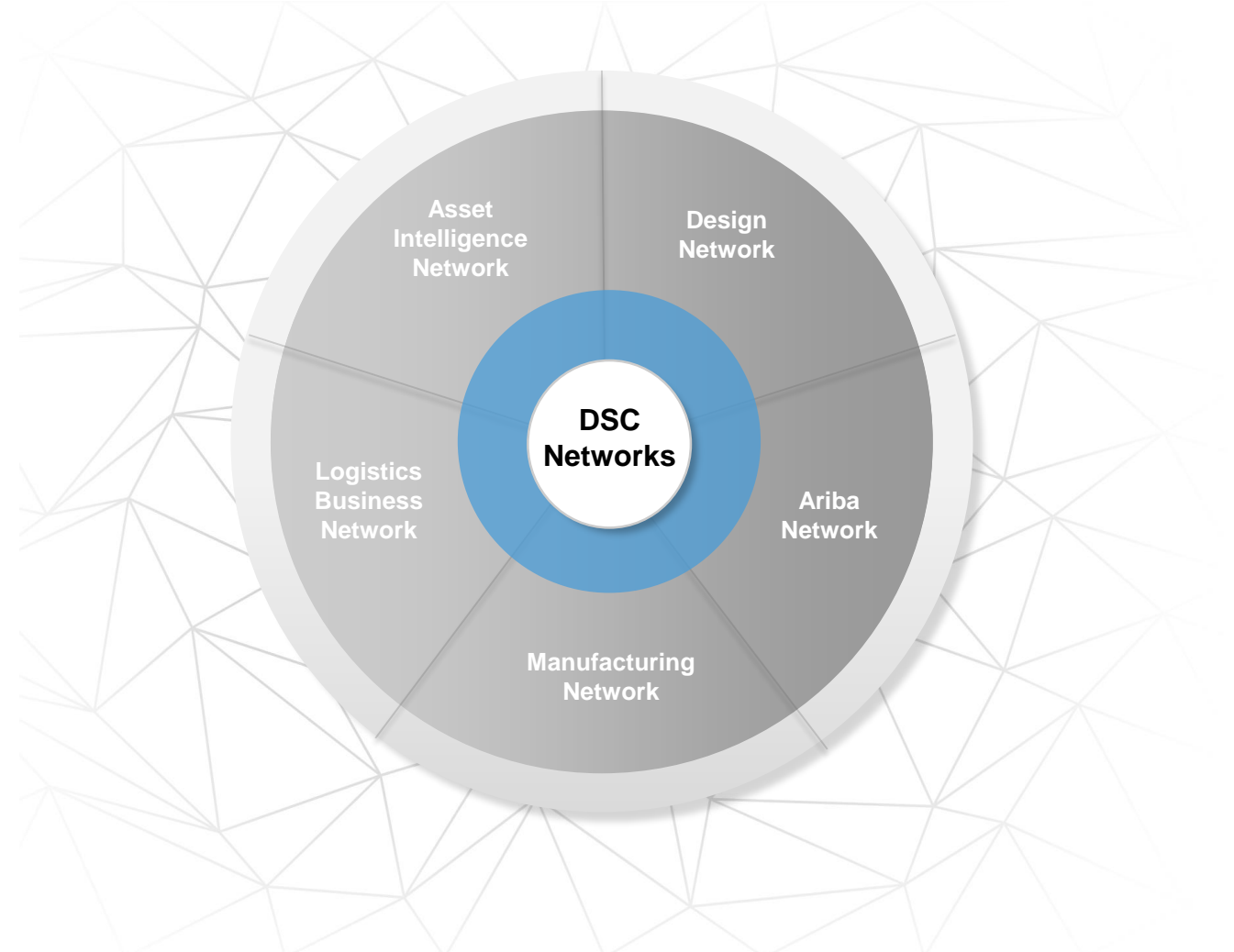
Collaborate with your additive manufacturing partners, manufacturing contractors, and suppliers

## **Logistics Business Network**

Collaborate with your carriers, logistics service providers

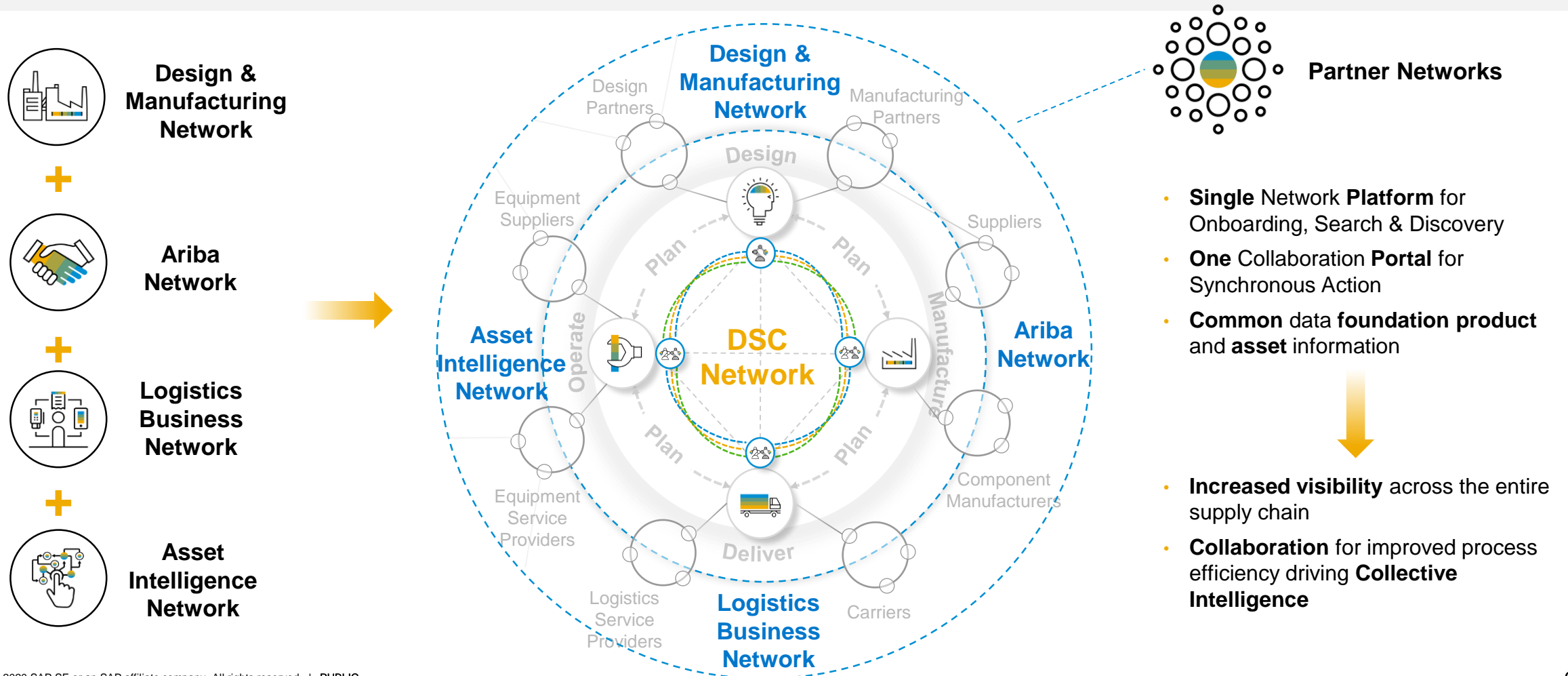
## **Asset Intelligence Network**

Collaborate with your equipment / spare parts suppliers and equipment service providers



# Vision: Evolve into “one” Digital Supply Chain Network

- Networks improve visibility, efficiency and collaboration in all stages/phases of planning in the continuous improvement loop from design, manufacture, deliver to operate.
- SAP is reducing 'friction' by orchestrating specific networks across the supply chain to improve stakeholder visibility and collaboration for improved process efficiency with collective intelligence



# Agenda

**Intelligence and Speed to imagine and deploy the Supply Chain of the future, today**

## **1) SAP Vision for Industry 4.0 and Digital Supply Chain**

- Market Dynamics
- The SAP Strategy for Industry 4.0: Industry 4.Now
- Vision of a modern supply chain

## **2) SAP DSC Solutions and the Intelligent Enterprise**

- SAP Solutions for the Intelligent Digital Supply Chain
- SAP DSC Vision: Network of Networks

## **3) Close the GAP and ACT: SAP Services for the Intelligent Digital Supply Chain**

- COVID-19 Essential Business Services
- YOUR path to the Intelligent DSC: SAP DSC innovation Workshop

# Agenda

**Intelligence and Speed to imagine and deploy the Supply Chain of the future, today**

## 1) SAP Vision for Industry 4.0 and Digital Supply Chain

- Market Dynamics
- The SAP Strategy for Industry 4.0: Industry 4.Now
- Vision of a modern supply chain

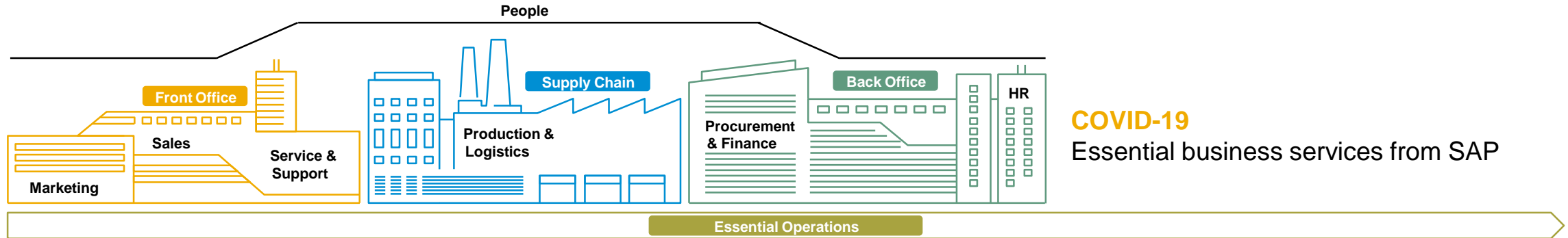
## 2) SAP DSC Solutions and the Intelligent Enterprise

- SAP Solutions for the Intelligent Digital Supply Chain
- SAP DSC Vision: Network of Networks

## 3) Close the GAP and ACT: SAP Services for the Intelligent Digital Supply Chain

- COVID-19 Essential Business Services
- YOUR path to the Intelligent DSC: SAP DSC innovation Workshop

# Fast Services covering the Intelligent Enterprise spectrum



**COVID-19**  
Essential business services from SAP

## SUPPLY CHAIN

50109250 Inventory Optimization

50109770 ACS Service Sales and Service (Automotive)

50109768 ACS Service JIT/JIS (Automotive)

50151180 Accelerated implementation service for SAP Ariba Sourcing and SAP Ariba Procurement

50110859 Enhancement Services for SAP PLM – Product Lifecycle Management

50109202 Enhancement Services for SAP PPM - Project Portfolio Management

New - Quick-start Service Package for Ariba (Sourcing, Contracts, Supplier Risk)

50112974 Implementation of Health and Saf. for SAP EHS

50129762 Best Practices Implementation for SAP IBP - Integrated Business Planning

50145941 Quick-start SAP Digital Manuf. Cloud insig.

50122875 What-if Analysis Forecast&Replenishment

50118344 Deployment of inventory diag. for Retail

50112882 Implem. of SAP Multiresource Scheduling

50144808 Quick-start for SAP Logistics Business Network

50150228 Implementation for Integrated Operations Mgmt



# Agenda

**Intelligence and Speed** to imagine and deploy the **Supply Chain of the future, today**

## 1) SAP Vision for Industry 4.0 and Digital Supply Chain

- Market Dynamics
- The SAP Strategy for Industry 4.0: Industry 4.Now
- Vision of a modern supply chain

## 2) SAP DSC Solutions and the Intelligent Enterprise

- SAP Solutions for the Intelligent Digital Supply Chain
- SAP DSC Vision: Network of Networks

## 3) Close the GAP and ACT: SAP Services for the Intelligent Digital Supply Chain

- COVID-19 Essential Business Services
- **YOUR path to the Intelligent DSC: SAP DSC innovation Workshop**

# How we can support you: Digital Supply Chain “Discovery workshop” service

## What is it about?



Built around a 2-day workshop, with an extended use of collaborative techniques, the service allows to exploit opportunities to innovate, extend, and optimize the **Supply Chain Processes**, adopting the **latest SAP capabilities and technologies**

Using a practical “**use case**” approach, a SAP team of experts in Supply Chain Business Transformation and authorities in SAP Architectures collaborates with the customer team of selected Supply Chain Experts and stakeholders to both achieve “**quick wins**” for the business and develop the **innovation roadmap** to a “Intelligent Supply Chain”

## What is in for me?



- “**Health status**” of the company Supply Chain Processes, compared with Industry Best Practices, state of the art project experiences and SAP Best Practices
- Assessment of customer **key Supply Chain pain points**, addressed with an optimization, extension or transformation path
- **Increased awareness** on the way latest technologies (including Machine Learning, Situation Handling and conversational UI) can bring in **intelligence and automation** to Supply Chain processes, making it relevant to the identified hot topic
- Tailored evaluation of the way the use of **Supply Chain Networks** can benefit current operations
- Insights to **reimagine business processes**, transforming Supply Chain around **real-time operational data** for real-time decisions, and **experience data** for improved customer centricity

# Digital Supply Chain “Discovery workshop” service

## Process Scope

### Design

Receive customer feedback – define **requirements** and **system concept** for new/changed product.



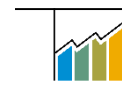
Create **product design**, **early cost estimates** and master data for new/changed product.



**Hand over** to manufacturing and service to manage BOM and routing.

### Plan

Plan **demand** for new / changed components.



Plan **supply** for new/changed components.

Create master **production schedule**.

### Procure

Procure **components** to build subassemblies



**Manage and track** inbound delivery.

**Receive** procured components into warehouse.



### Manufacture (subassemblies)

**Schedule** subassembly production.



**Produce** subassemblies and track progress.



**Receive** subassemblies into warehouse.



### Sell

Receive customer **sales order**. (**assemble to order**)

**Schedule** finished product production.



**Produce** finished product and track progress.

**Register** serialized finished product.



**Receive** finished product into warehouse.



### Manufacture (finished product)

### Deliver

Plan transport, pick, pack, and load product for **delivery**.



Perform and track **outbound transportation** and receive proof of delivery.

### Operate

Receive asset master data and **onboard** asset.

**Monitor** assets with IoT data, perform analysis, **predict** asset failure.

**Plan** asset maintenance.



Perform inspection, **maintenance**, and repair.

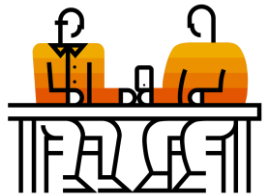


Request **product improvement**

Decommission on asset.

# Digital Supply Chain “Discovery workshop” service

## Approach, Output and Actions



### INITIAL PREPARATION

#### ACTIONS

- Share methodology & Deliverables
- SAP Spotlight analysis (if applicable)
- SAP Readiness Check / BSR (if applicable)

#### OUTPUT

- Business Areas
- Meeting participants
- Detailed Planning
- View of current DSC processes usage

3 weeks prior to workshop



### DISCOVER CURRENT & FUTURE NEEDS

#### ACTIONS

- Introduce Business map for the brainstorm
- Collaborative session to gather key points additional needs

#### OUTPUT

- Opportunities with assigned business relevance
- Process oriented reclassification of findings (Journey)

2-days workshop



### ANALYZE & DEFINE

#### ACTIONS

- Discussion of outcome of Discover (Journey)
- SAP capabilities proposal: best practice, customer use cases
- Discussion of architecture impact

#### OUTPUT

- SAP capability Journey
- Possible Vertical Exploration scenarios identification
- Validated Heat-Map



### FINAL ALIGNMENT

#### ACTIONS

- Assessment presentation

#### OUTPUT

- Agreed roadmap
- Single Journey next steps

2-3 weeks after workshop



Optimize



Extend



Transform

# Digital Supply Chain “Discovery workshop” service

## Reference Deliverable Content

### 1. Introduction & customer situation

**SAP S/4HANA**  
Real-time, multi-dimensional reporting: Streamline closing and reporting process

Full Balance Sheet information in an S/4HANA Branch? Subdaily level in any point in time across sectors & complete reporting on a level lower than the individual company level and cost centers. Ask: Access for other financial S/4HANA reports in the international use case.

**Requirements**

- Customer wants to have a complete Total Balance and Month-end GL Reporting for all S/4HANA developer countries
- Customer wants to have a complete Total Balance and Month-end GL Reporting for all S/4HANA developer countries
- Customer wants to have a complete Total Balance and Month-end GL Reporting for all S/4HANA developer countries

**Customer's Business Challenge**

- Customer wants to have a complete Total Balance and Month-end GL Reporting for all S/4HANA developer countries
- Customer wants to have a complete Total Balance and Month-end GL Reporting for all S/4HANA developer countries
- Customer wants to have a complete Total Balance and Month-end GL Reporting for all S/4HANA developer countries

**Process Improvements**

- Customer wants to have a complete Total Balance and Month-end GL Reporting for all S/4HANA developer countries
- Customer wants to have a complete Total Balance and Month-end GL Reporting for all S/4HANA developer countries
- Customer wants to have a complete Total Balance and Month-end GL Reporting for all S/4HANA developer countries

**Strategic Benefits**

- Customer wants to have a complete Total Balance and Month-end GL Reporting for all S/4HANA developer countries
- Customer wants to have a complete Total Balance and Month-end GL Reporting for all S/4HANA developer countries
- Customer wants to have a complete Total Balance and Month-end GL Reporting for all S/4HANA developer countries

### 2. Preliminary Data Usage Analysis (optional, for SAP customers – SAP Spotlight)

details of your usage data

**Example Report**

Data details – [Customer Name]

Data time coverage  
Data covers six months

Data usage coverage  
Analysis focuses on user effort in ERP UIs

Benchmark:  
Retail Industry  
Around 1000 companies  
Includes Support Industry

### 3. Preliminary Process Usage Analysis (optional, for SAP customers - SAP Spotlight)

Sample Customer

Process Usage Analysis

Process Usage Analysis

Process Usage Analysis

### 4. Structured, innovation driven mapping of identified business needs



### 5. Supply Chain readiness self assessment for S/4 processes (optional)

What do you think of this innovation: "Purchase Order Processing"?

5/5

Area	Readiness	Timeline	Owner	Initial Customer Reaction	Customer Feedback
Purchase Order Processing	High	Q1 23	Customer	Positive	Excellent

### 6. Reference industry trends and vision (additional to Spotlight)

Industry Trends and Industry Vision 2025

Strategic Priorities

- Customer Engagement
- Workforce
- Asset Management
- Network of Networks
- Sustainability

300 Year of Customer

Data Ingest Drivers

Digital Smart Assets

### 7. Process summary with opportunities by Supply Chain Areas

**Example Report Summary**

CUSTOMER LOGO

Area	Count	Opportunity	Recommendation
Procurement	28	13	6
Production	9	9	6
Logistics	6	6	6

Summary

Key findings and recommendations.

### 8. Solution Heatmap

Overview & Prioritization existing Innovation Topics

Prioritization Matrix

Business Value vs. Ease of Implementation

### 9. Roadmap (S/4 and S/4 enabler)

Next horizon – Roadmap for customer

Phase 1: Foundation & Quick Wins

Phase 2: Optimize & Scale

Phase 3: Grow & Innovate

Phase 4: Future opportunities

### 9. Next steps

S/4HANA Roadmap

Key milestones and action items.

Intelligent Enterprise starts with

# SAP Digital Supply Chain

# SAP S/4HANA learning&enablement

## Start with a solid understanding via free Open SAP courses



### Courses for New Customers and Partners:

MOOC	SAP S/4 HANA in a Nutshell
MOOC	Building Tomorrow's ERP with SAP S/4HANA
MOOC	How to Deliver a Great User Experience with SAP S/4HANA
MOOC	Migrating Your Business Data to SAP S/4HANA – New Implementation Scenario
MOOC	System Conversion to SAP S/4HANA and Data Migration to SAP S/4 HANA
MOOC	Find Your Path to SAP S/4HANA
MOOC	The Internet of Things with SAP and Touch lot with SAP Leonardo
MOOC	Business Process Automation in SAP S/4HANA with SAP Intelligent RPA



Access to free training OPEN SAP: <https://open.sap.com/>

# SAP S/4HANA Supply Chain Execution: Learning Journey and Available Courses



## Courses for New Customers and Partners:

<b>S4601</b>	Business Processes in SAP S/4HANA Supply Chain Execution
<b>S4610</b>	Delivery Processing in SAP S/4HANA Sales
<b>S4611</b>	Basic Shipping in SAP S/4HANA
<b>EWM100</b>	Processes in SAP Extended Warehouse Management (EWM)
<b>EWM110</b>	Basic Customizing in SAP Extended Warehouse Management (EWM)
<b>EWM120</b>	Customizing Additional Topics in SAP Extended Warehouse Management
<b>EWM125</b>	Labor Management in SAP Extended Warehouse Management
<b>EWM130</b>	Production Integration with SAP Extended Warehouse Management
<b>EWM140</b>	Quality Management in SAP Extended Warehouse Management
<b>EWM900</b>	SAP Extended Warehouse Management – Developer Workshop



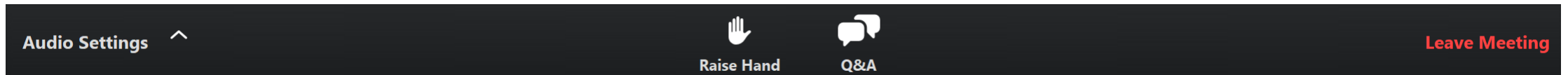
## Access to Learning Journey for SAP S/4HANA Supply Chain Execution:

[https://help.sap.com/doc/221f8f84afef43d29ad37ef2af0c4adf/HP\\_2.0/en-US/7d4969ff429a4e73b9bb79be7390d257.html](https://help.sap.com/doc/221f8f84afef43d29ad37ef2af0c4adf/HP_2.0/en-US/7d4969ff429a4e73b9bb79be7390d257.html)

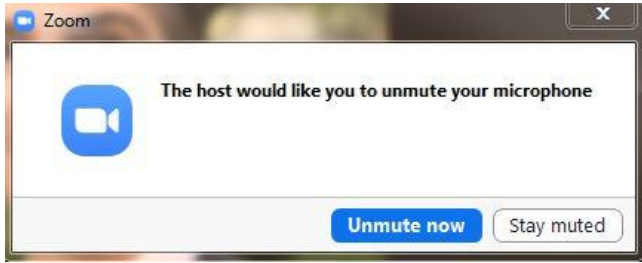


# Questions & Answers

Raise your hand and talk live with us



Raise your hand to be unmuted and ask your question



# Contact information



**Andrea Pagliari**

**Head of Business Development  
SAP Services EMEA South**

E: [andrea.pagliari@sap.com](mailto:andrea.pagliari@sap.com)  
M: +39-348-2420293



**Massimo Mattioli**

**Solution Architects Manager  
Digital Supply Chain  
SAP Services**

E: [massimo.mattioli@sap.com](mailto:massimo.mattioli@sap.com)  
M: +39-344-2410555



**Andrea Pigozzi**

**Principal Business Process  
Architect  
SAP Services**

E: [andrea.pigozzi@sap.com](mailto:andrea.pigozzi@sap.com)  
M: +39-393-9690548



**Giovanni Olivieri**

**Principal Solution Architect  
SAP Services**

E: [giovanni.olivieri@sap.com](mailto:giovanni.olivieri@sap.com)  
M: +39-335-6813778



**Paolo Castagnoli**

**IoT and Digital Supply Chain  
Business Development  
SAP Services**

E: [paolo.castagnoli@sap.com](mailto:paolo.castagnoli@sap.com)  
M: +39-348-2341235

# Thank you.

<https://webinars.sap.com/mea/sap-dbs-emea-south-for-intelligent-enterprise/en/home>