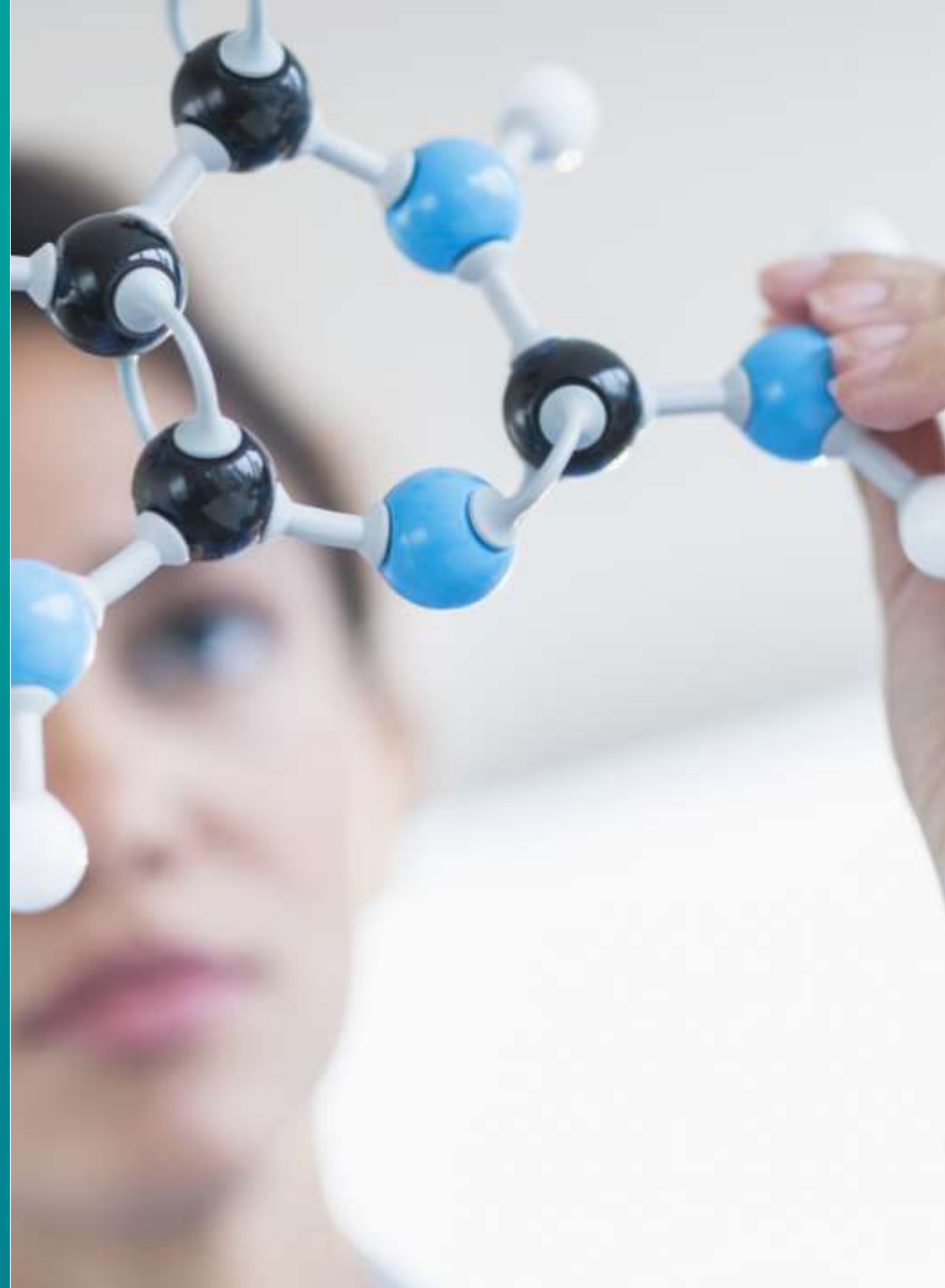




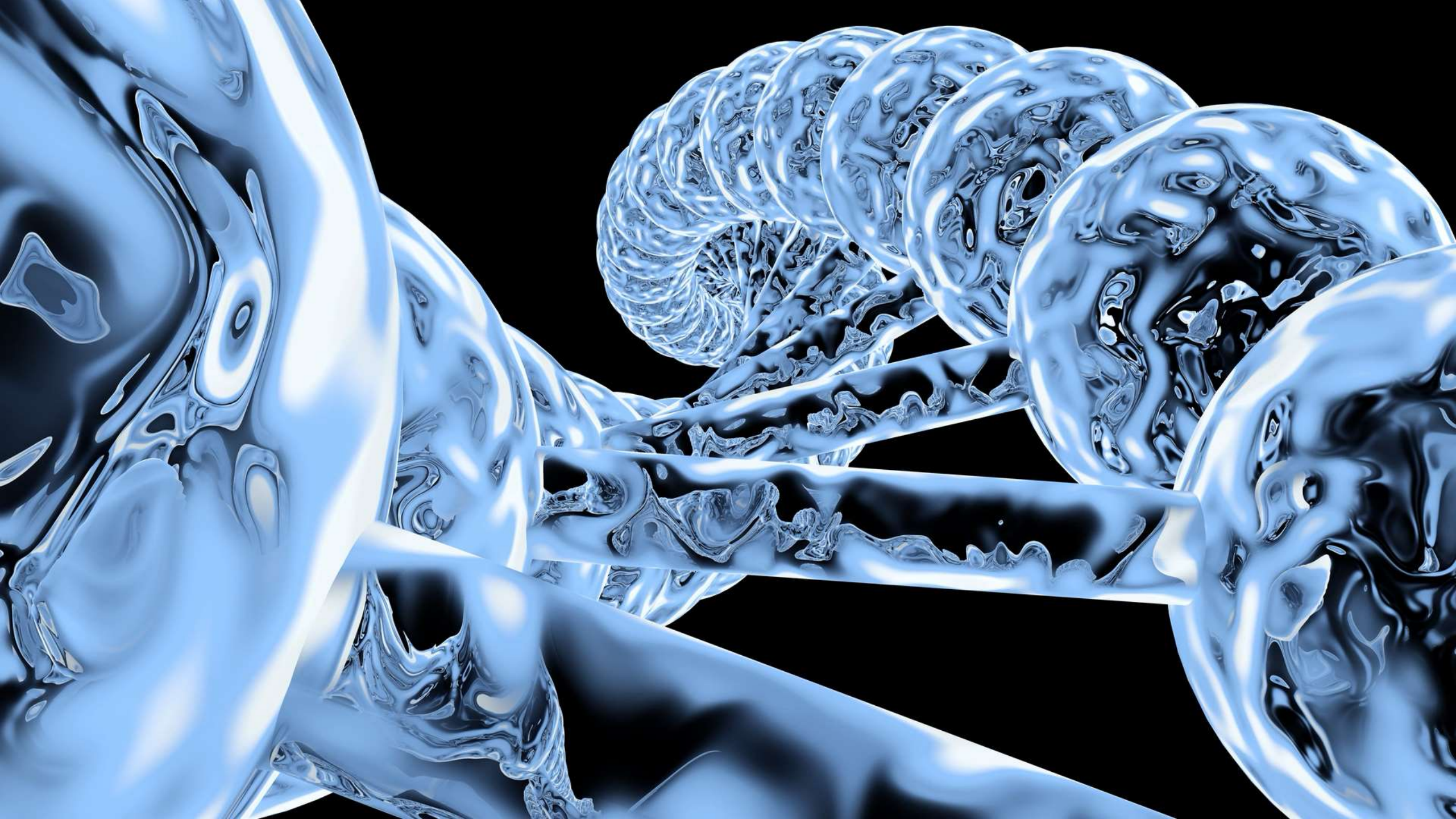
# SAP Innovations for the regulated Environment:

## SAP E2E Digital Validation platform approach

Amedeo Prodi  
SAP Architecture Advisor

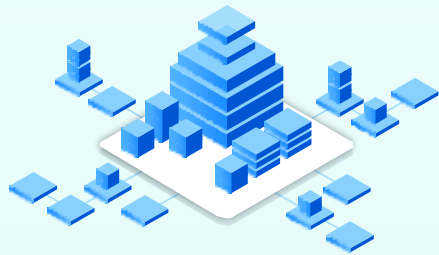








# RISE with SAP Methodology guides Life Sciences Companies in transition from a modified monolithic architecture to a modular suite



**Monolithic**  
*ECC/On premises*

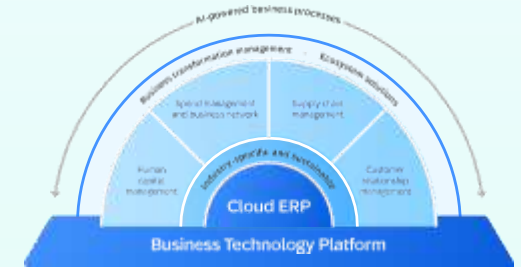
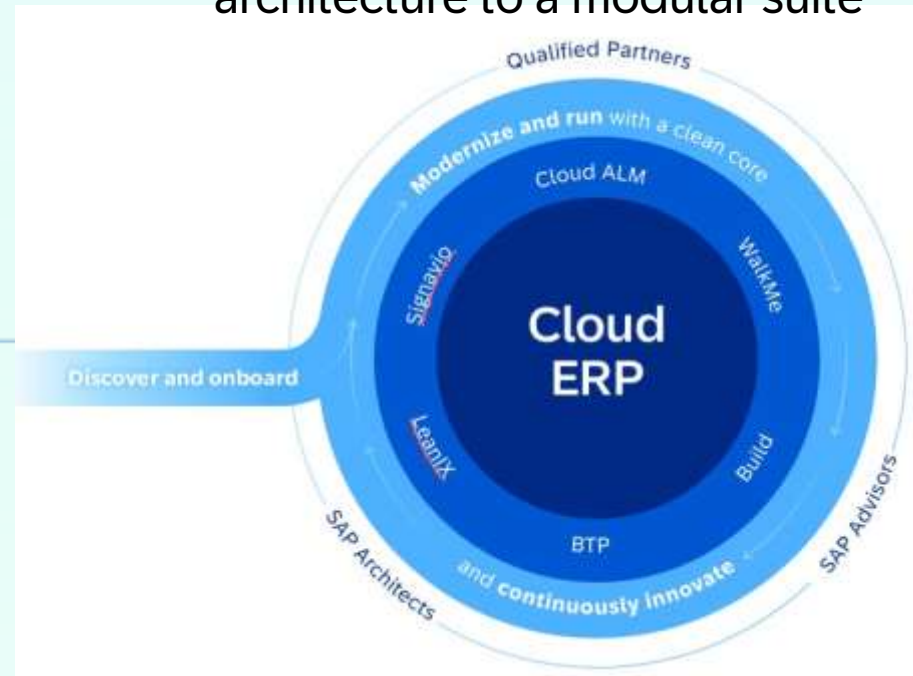
**Broken Processes**

**High # of custom modifications and add ons**

**Isolated and siloed analytics**

**Data redundancies**

The RISE with SAP Methodology is designed to ensure the transition from a monolithic architecture to a modular suite



**Modular Cloud ERP Suite**

**70% of Core Business Processes are automated**

**80% less software customization**

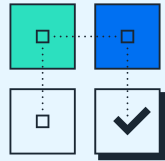
**E2E Analytics & pre built Business content**

**Single source of data truth**

# RISE with SAP Methodology

Transform your business and enable continuous innovation

## RISE with SAP Methodology | Key components



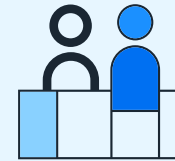
### A standardized framework

to facilitate the transformation journey and enable continuous innovation.



### Utilizing the integrated toolchain

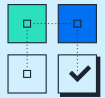
to enhance the customer experience and accelerate transformation.



### Guided by experts

from SAP and its qualified partners for onboarding and ongoing engagement.

# We designed RISE Methodology with the purpose to standardize the end-to-end process while maximizing usage of SAP and partner expertise



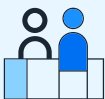
## A standardized framework

to facilitate the transformation journey and enable continuous innovation.



## Utilizing the integrated toolchain

to enhance the customer experience and accelerate transformation.



## Guided by experts

from SAP and its qualified partners for onboarding and ongoing engagement.

Discover

Prepare

Explore

Realize

Deploy

Adopt

## Your transformation journey tailored specifically for RISE with SAP S/4HANA Cloud Private Edition

It includes task descriptors and accelerators, an overall **clean core success plan**, and **quality gates to compliance** at every stage of the journey. In addition, the new **AI-powered** RISE with SAP Methodology **assistant** will soon be available to enhance your experience.

### SAP Signavio

**Collaborative business process management:** platform for analysis, design, modelling, and optimize business processes.

### SAP LeanIX

**Enterprise Architecture Management:** tools and capabilities to visualize, manage, and optimize IT landscapes and technology portfolios.

### SAP Test Automation by Tricentis

**Test Automation Platform:** Streamline and accelerate the testing process through automation.

### WalkMe

**Simplify User Transition:** User Assistant by WalkMe + SAP Enable Now e-learning content

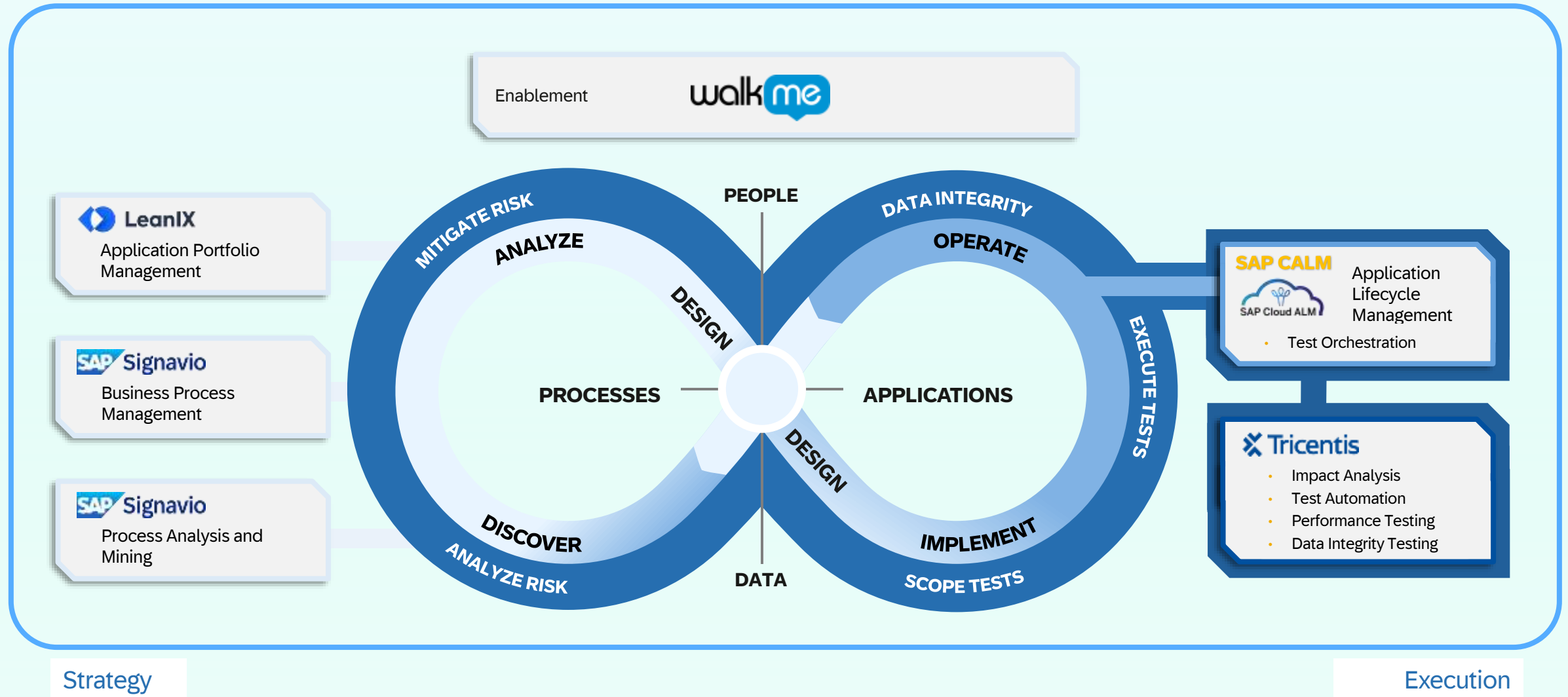
**SAP CALM** Implement & Operate Solutions

## Onboarding by a dedicated launch advisor and SAP expert guidance

- **Setting up project management** tools and establishing the project road map, introducing the principles of the clean core methodology, outlining the clean core success plan, and supporting the execution of quality gates
- **SAP expert feedback and recommendations** on how to achieve the clean core principles.
- **SAP community network** to get answers, discuss best practices, and continuously learn more about SAP solutions

# The Quality Shield for SAP Transformation Management

Safeguarding transformation across EAM, BPM, and ALM





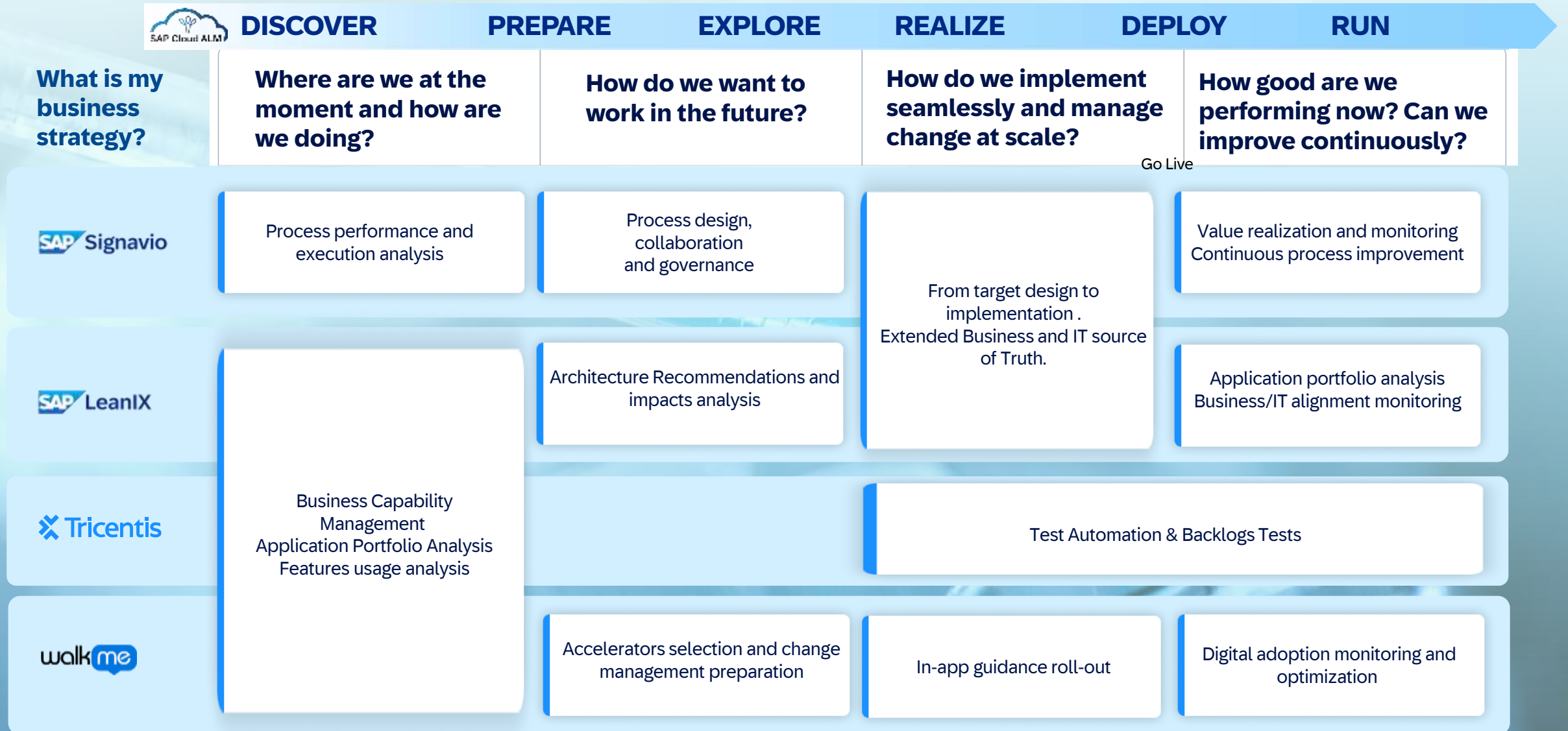


# Bring your business strategy to execution

Toolchain role



# Bring your business strategy to execution with Business Transformation





# SAP Cloud Application Lifecycle Management

SAP Cloud ALM helps you to **implement** and **operate** intelligent **cloud** and **hybrid** business **solutions**. You benefit from an **out-of-the-box**, native cloud solution, designed as the **central entry point** to manage your SAP landscape with **content-driven** guided implementation (Best Practices) and highly **automated** operations. This helps to: Achieve **faster time-to-market**, **Avoid** business **disruptions**, Increase **efficiency** of **IT operations**, Provide **transparency** of the entire **IT landscape**.

## Benefits of SAP Cloud Application Lifecycle Management (\*)

<https://roadmaps.sap.com>

**15%** Reduction TCO due to **harmonization** of **implementation** & **validation**, reducing interfaces and errors ,

**Review Time To Zero** - Reduced **effort** in testing and **risk** management activities of **GxP** relevant Processes

**20%+** Reduction in implementation effort and in change impact analysis, using different expert tools and out-of-the-box process for validation.

**80%** Reduction time for updates from release note to release of the update

## Capabilities of SAP Cloud Application Lifecycle Management:

### Designed for cloud and hybrid customers

- Cloud** solutions from SAP
  - **On-premise** ABAP solutions (SAP S/4HANA, SAP Business Suite, SAP BW)
  - **PI/PO** integration monitoring
  - **Non-SAP** solutions

### Bild, Run, Optimize your Intelligent enterprise

Provides **Methodology (Activate)**, **Operation Automation**, **Collaboration**, **Integration** delivering:

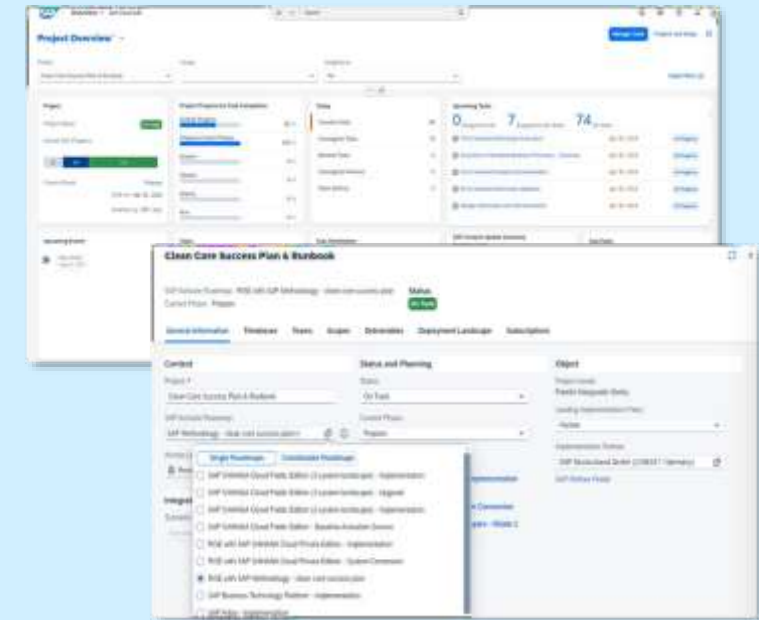
- **Business Transformation**: Analyze, Transform, Provide, Validate
- **Harmonized projects implementation** (Design[Best Practices], Build, Test, Deploy).
- **Service Collaboration**: Prepare(Service plan), Deliver(Mon. Status), Share(Reports), Follow-up(Results)
- **Business Continuity**: Detect(Anomalies), Analyze (root cause), Correct(actions), Automate

### Adopt Clean Core



Provides the **environment** to manage your clean core projects along SAP **Activate** and the **5 dimensions** together with **Analytics** and **Traceability** dashboards to track adherence to clean core criteria

- **Processes**
- **Extensibility**
- **Data** (Readiness Check for quality)
- **Integration**
- **Operation**



## Facts and figures

**7900+**  
customers and partners in implementation and operations

## SaaS Native

Solution available across the globe

## Included

in your cloud subscription containing:  
Enterprise Support, cloud edition and in SAP Enterprise Support.

# SAP Testing Automation Platform

Tricentis is a **leading provider** of continuous testing solutions that play a crucial role in S/4HANA transformations. SAP Test Automation by Tricentis **enables** digital **transformation** and **intelligent operations** by **reducing** business **risk** associated with application changes. Seamlessly extend and expand your **automated testing** that exists in SAP Cloud Application Lifecycle Manager with more capacity and users

## Benefits of SAP Testing Automation Platform (By Forrester)

<b>300%</b> Improvement in application release rate	<b>84%</b> Reduction in testing scope, and <b>78%</b> reduction in production errors	<b>99.4%</b> Reduction in performance test maintenance costs	<b>334%</b> ROI and six months payback
---	--	--	--

## Capabilities of SAP Testing Automation Platform:

### Change Impact Analysis

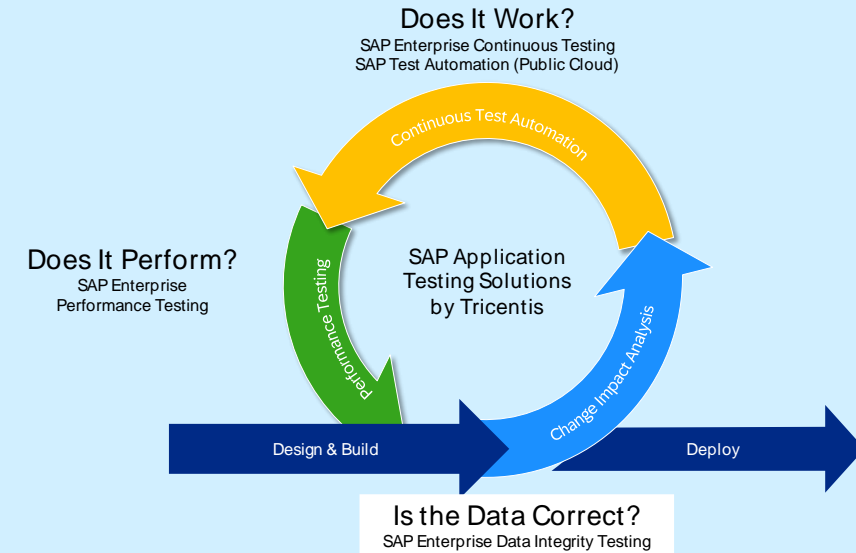
AI based, Identifies high-risk areas, prioritizes tests to ensure coverage, **automatically creates execution lists** based on impacted areas and **improve quality** of standard and custom software releases

### Enterprise Continuous Testing

Comprehensive end-to end testing with support for SAP and hundreds of other technologies and enterprise apps - **On-demand test systems and test data** to end testing roadblocks – **(AI Based) Risk-based testing** that aligns testing with business priorities to ensure critical business processes are always covered

### Performance Testing

Provides **real-time visibility** into enterprise application **performance** with on-demand, cloud-based distributed load testing. The solution **scales** to test at speed, **supports open-source tools**, and simplifies test creation and deployment. It **collects** and **aggregates results from** multiple load testing scripts and presents them in an **intuitive reporting** interface.



## Facts and figures



3.000+

Customers around the world

108K+

Certified Tricentis Test Automation Engineers

Leader

Named leader in industry analyst vendor ratings and **Official Testing Solution for SAP**

SaaS Native

Solution available across the globe

# SAP Signavio Process Transformation

SAP Signavio, our cloud-based suite for **business process analysis**, optimization and management, you can **optimize** your **processes**, increase **efficiency** and **drive** transformation and **innovation**.

The market-leading solutions gives your organization the ability to **visualize**, **optimize** and transform every aspect of your business **processes** to drive sustainable growth and resilience - fast and at scale to archive a more agile and resilient enterprise.

## Benefits of SAP Signavio

- ✓ **Achieve transparency**
- ✓ **Improve performance**
- ✓ **Streamline Collaboration**
- ✓ **Accelerate time to value**

## Capabilities of SAP Signavio:



### Process and journey modeling

Standardized process and journey management, simulation and modeling



### Process governance and automated execution

Maintain organizational and regulatory compliance of all documented processes



### Process analysis and mining

Complete process analysis and mining for enterprise transformations and operational excellence programs



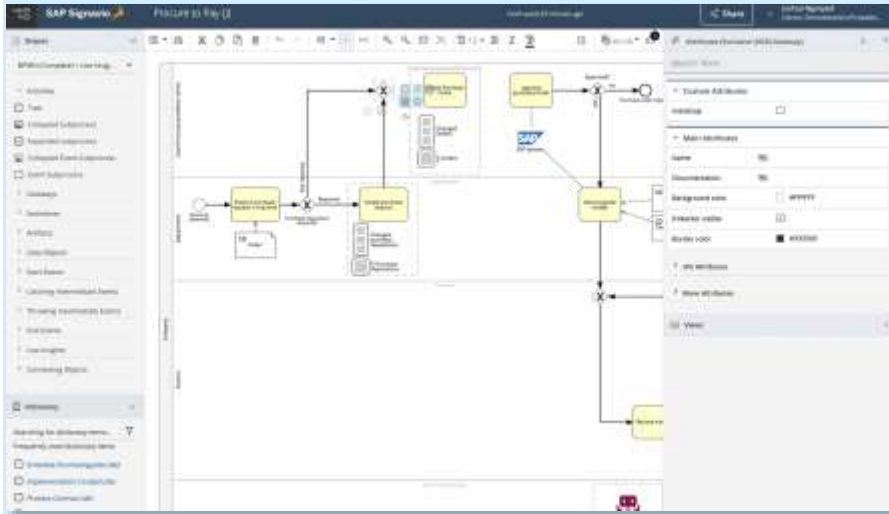
### Process transformation management and collaboration

Collaborative planning, management and execution of transformations



### Value acceleration and artificial intelligence

Speed up time to value and increase the quality of output with pre-built sets of content and generative AI



## Facts and figures

2500+

Customers around the world

Leader

Status in multiple analyst grids

Front-runner

of SAP Business AI

1000+

of Best Practices



# LeanIX Enterprise Architecture

LeanIX is a market leader for enterprise architecture, driving the **modernization of IT landscapes and continuous business transformation.**

Its software-as-a-service solutions empower organizations to **create transparency**, enabling them to **visualize, assess and manage** the transition towards their target IT architecture.

## Benefits of LeanIX (IDC Study)

<b>\$1.1M</b> - Companies using LeanIX solutions realize on average of \$1.1M per year in benefits	<b>\$2,670</b> - avg. annual benefit per managed app	<b>386%</b> - ROI in 3-years	<b>5</b> - months payback period
--	--	------------------------------	----------------------------------

## Capabilities of LeanIX:

### Application Portfolio Management

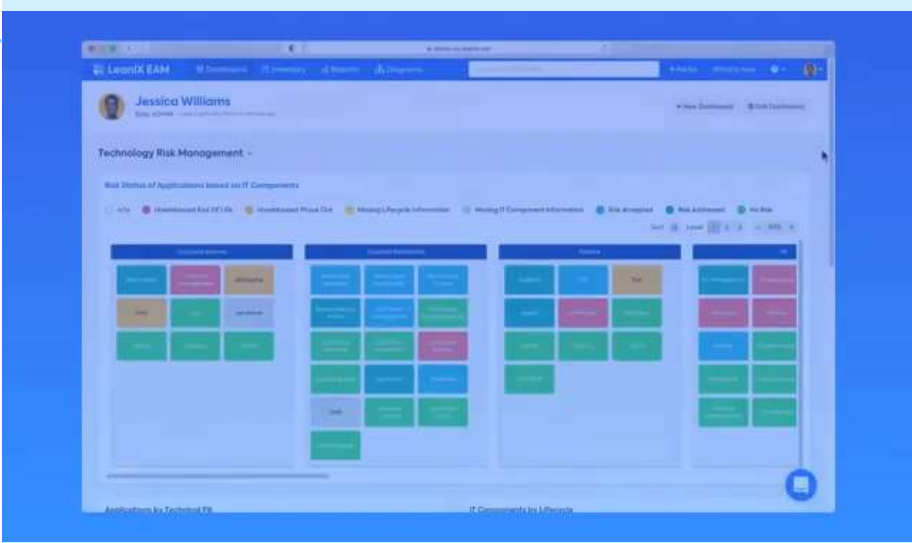
Gain transparency over the as-is application landscape and all dependencies and understand how your business capabilities are supported.

### Technology Risk and Compliance

Proactively address potential vulnerabilities and threats, compliance issues and obsolescent technology.

### Architecture and Road Map Planning

Design and plan the to-be application landscape and build a technology roadmap to get there faster, with less risk and greater confidence.



## Facts and figures

**1200+**  
Customers around the world

**NPS 70+**  
Customer satisfaction score

**Leader**  
Status in multiple analyst grids

**SaaS Native**  
Solution available across the globe

# WalkMe

**WalkMe** is the world's leading Digital Adoption Platform (DAP). Enterprises use WalkMe to pinpoint and resolve the digital friction that's hiding in their workflows, achieve the ROI they expect from their tech investments and be better equipped to manage constant change.

## Benefits of WalkMe

**60%** Faster adoption of new app and features (fast time to adopt)

**45%** Faster Application change adjustments (fast time to adapt)

**41%** Fewer Business Process errors (issue prevention)

**494%** Boost your Adoption ROI

## Capabilities of WalkMe:

### Data and analytics

Visibility into the real usage and friction points in all the software running across the organization, workflow by workflow, task by task so businesses can see what workflows they need to optimize and track success

### Digital adoption content creation

Tools and templates to eliminate friction in key workflows by building automations and personalized in-app guidance delivered in the flow of work

### User experience

People-first experiences that provide in-app guidance, a conversational interface to kick off tasks and answer questions, and helpful notifications; all designed to help people navigate workflows effortlessly, even in the face of constant change.

The trademarks and product names represented herein are the property of their respective owners.

## Facts and figures

**1600+**

Customers around the world

**7 billion+**

Interactions with WalkMe

**27%**

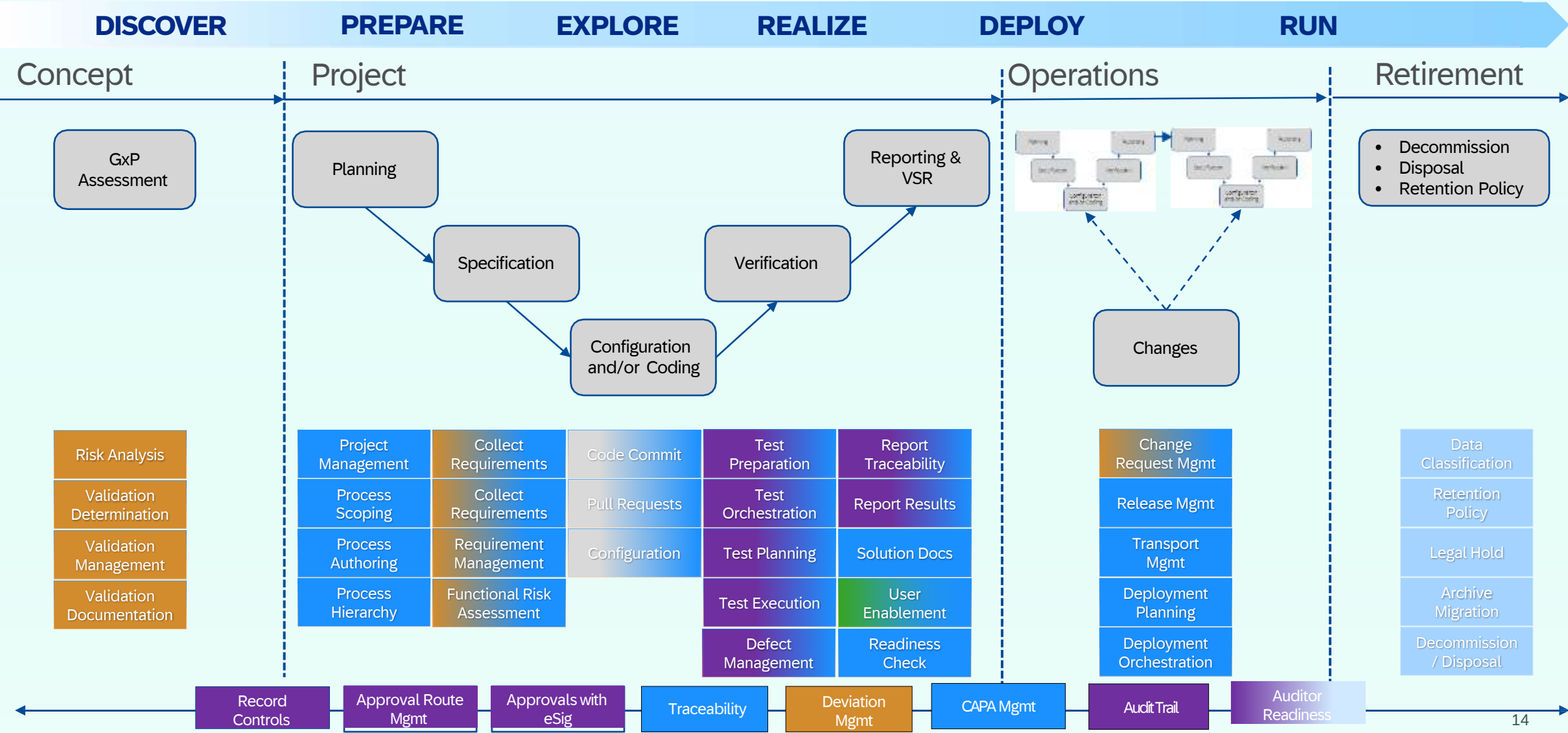
Of the Fortune 500 as customers

**Leader**

Recognized by Gartner, IDC and Forrester

# GAMP 5 Project Phases mapped to Platform capabilities incl. SAP Partner Solutions

DHC SVA	Roadmap
WalkMe	Tricentis Vision
SAP CALM	Tricentis







# Customer Experiences

Life Science experiences  
with SAP CALM





“SAP Cloud ALM serves as the central entry point for managing our SAP solution landscape, supporting smooth integration, content-driven guided implementation, and highly automated operations, which are essential for our cloud journey. As part of the RISE with SAP offering, SAP Cloud ALM helps us integrate SAP solutions with our third-party systems. This enables us to **leverage the best capabilities of SAP solutions to remain future-ready.**”

Vasant Pednekar, SHS IT, ALM Lead, Siemens Healthineers AG







**“With the SAP Cloud ALM solution, Dr. Reddy’s efficiently monitors its diverse hybrid landscape, including various cloud services. The straight- forward, user-friendly setup of SAP Cloud ALM makes it operational from day one, facilitating seamless centralization. This enables **more efficient monitoring, troubleshooting, and optimization**, ensuring the SAP software environment at Dr. Reddy’s operates smoothly and effectively.”**

Sojan Varghese, SAP Platform Head, Dr. Reddy’s Laboratories Limited





# Thank you.