



SAP S/4HANA Movement

Your journey into the Intelligent Enterprise

Riccardo Sampietro, SAP Presales Senior Advisor
March 21, 2019

PUBLIC

SAP S/4HANA Movement: What is it?

SAP S/4HANA Movement is a standardized program and approach that enables customers to

motivate, define, design, size and execute

the transformation journey to the **Intelligent Enterprise.**

SAP S/4HANA Movement: What is the program framework?

SAP S/4HANA Movement provides a comprehensive framework that contains all the required steps to engage transformation's stakeholders



Executive Alignment

What business objectives do we enable?



Value Discovery

Where and how will we realize our ROI?



Execution Readiness

What is our plan for deployment?



Value Delivery

Which best practices ensure success?

What does it mean to enable Intelligent Enterprise?

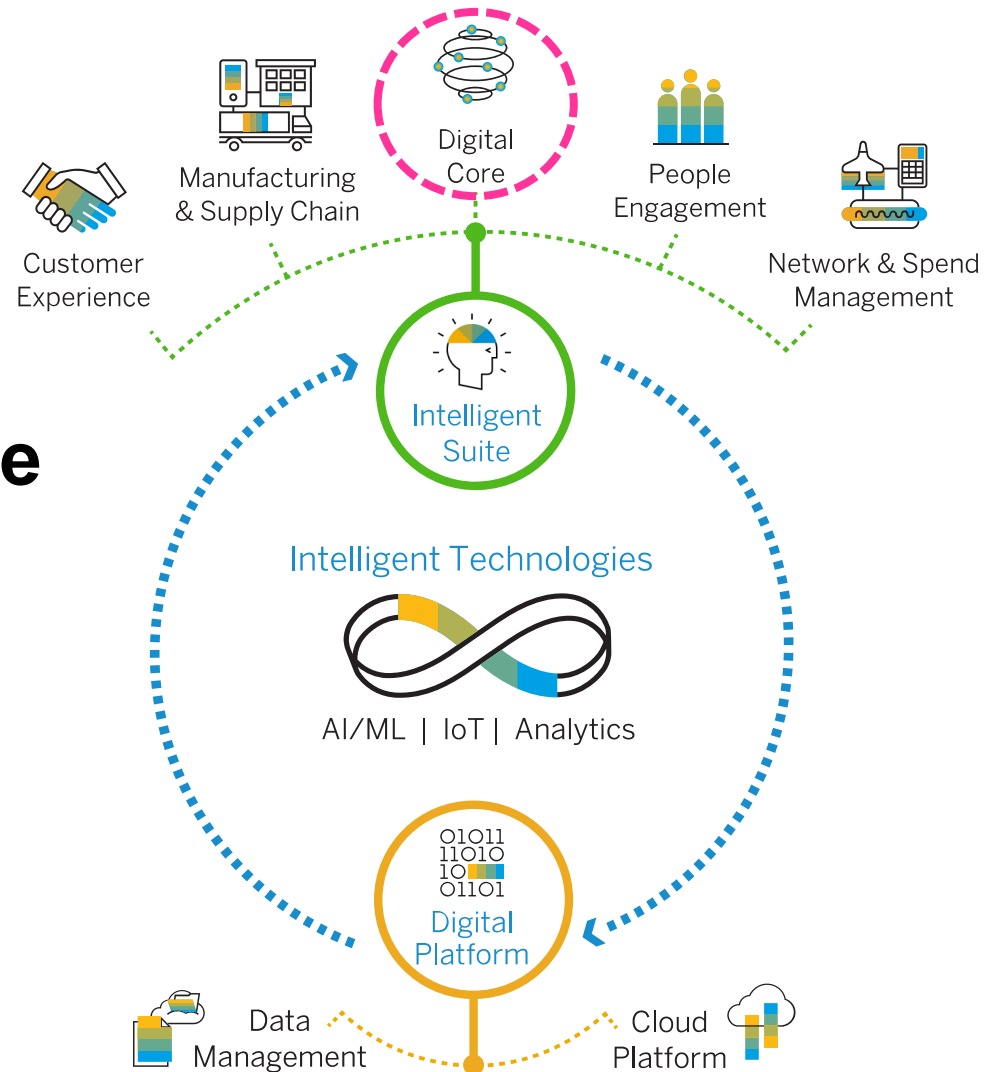
Intelligence is the ability to adapt to change

Intelligence can be expressed in various ways:

- ✓ **Understanding:**
Insight into what is changing and how
- ✓ **Responsiveness:**
Flexibility and speed to adapt
- ✓ **Connectedness:**
Awareness of and the ability to impact

Social
Virtualization **New products**
Market trends Supply chain disruption
Customer expectations
Geopolitical climate **Resource scarcity**
Technology Partners Competitors
Substitutes Geographies

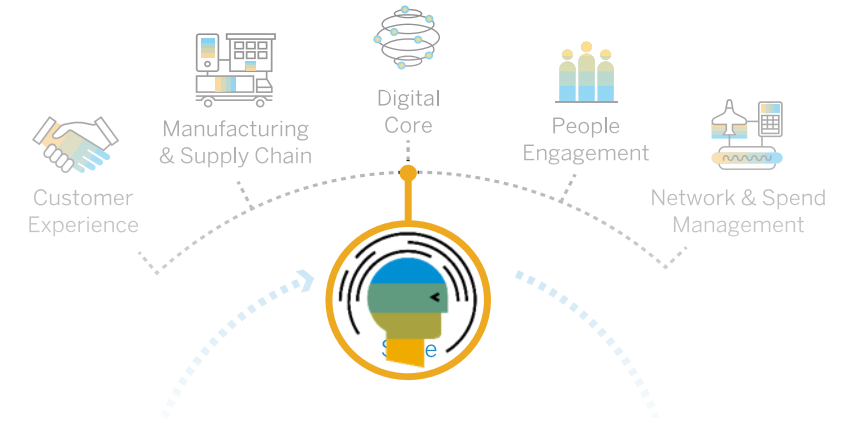
Intelligent Enterprise Framework



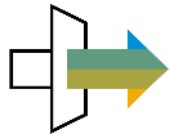
- 1 Intelligent Suite
- 2 Intelligent Technologies
- 3 Digital Platform

The **Intelligent Enterprise** features
3 KEY COMPONENTS

To become an Intelligent Enterprise, Digital Core is a foundational requirement



SAP S/4HANA enables new capabilities



Real-time processing



Combined transactions and analytics



Simplified data model

1

Intelligent automation

2

Insight and prediction

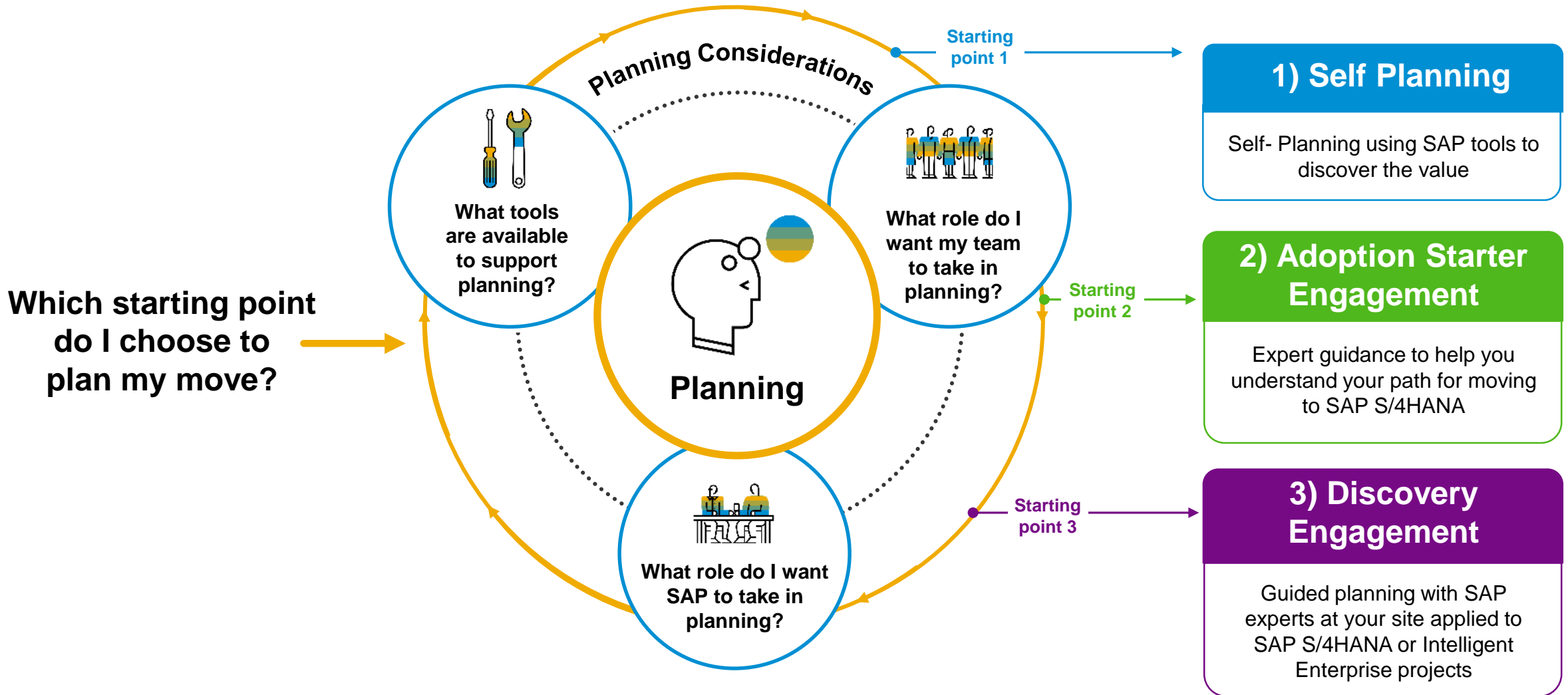
3

Industry NEXT practices

Start with **SAP S/4HANA** to create end-to-end intelligent processes across all lines of business and industries, take the next leap in automation of key functions, and move first with machine learning investments by SAP

SAP S/4HANA Movement: make the case

Customers can choose one of three starting points that best suits them



SAP S/4HANA Movement: Discovery Engagement Methodology



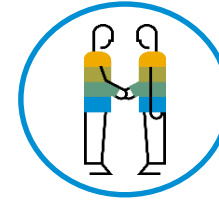
Executive Alignment

What business objectives do we enable?



Value Discovery

Where and how will we realize our ROI?



Execution Readiness

What is our plan for deployment?



Value Delivery

Which best practices ensure success?



What is new? SAP Tools and Resources Available

Accelerate SAP S/4HANA Adoption by SAP ERP Customers

Executive Alignment



Define your strategy

Plan the engagement and get executive buy-in

- SAP Business Value Advisor ([link](#))
- SAP S/4HANA Industry & LoB Value Whitepapers ([link](#))
- SAP S/4HANA Customer Success Flipbook ([link](#))
- SAP S/4HANA Digital Concierge ([link](#))
Custom Resources Tailored to You:
- Industry Door Openers ([link](#))

Value Discovery

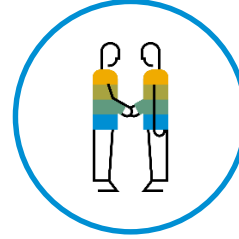


Make the case

Where and how will we realize our ROI?

- SAP Transformation Navigator ([link](#))
- SAP Business Scenario Recommendation ([link](#))
- Next Generation Benchmarking and Value Manager ([internal link](#)) –
- [SAP Solution explorer](#) provides solution scope details per LoB
- SAP S/4HANA Adoption Starter ([SAP Service Offering](#))
- SAP TCO Explorer (coming soon)

Execution Readiness



Consider the options

What is our plan for deployment?

- SAP S/4HANA Product Roadmaps ([link](#))
- SAP Best Practices Explorer ([link](#))
- SAP Fiori Apps Library ([link](#))
- SAP Readiness Check for SAP S/4HANA ([link](#))

Value Delivery

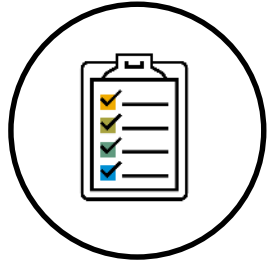


Build your future

Which best practices ensure success?

- Custom Code Adaptation [ABAP Test Cockpit](#)
- Improved Data Migration SAP [S/4HANA Migration Cockpit](#)
- Reduced integration efforts [Integration Content Advisor](#)
- Downtime Optimized Conversion [Software Update Manager](#)
- Leverage Standard [SAP Model Company for the Intelligent Enterprise](#)
- SAP Activate Deployment Method

Emphasize reductions in TCI through relevant tools



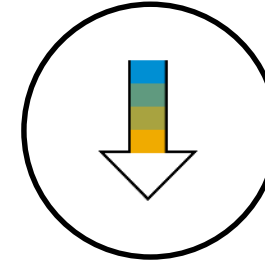
1. Planning & Execution

Reducing some of the largest projects costs, while helping understand the effort drivers and plan mitigations



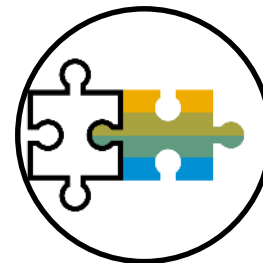
2. Custom Code Adaptation

Simplifying the process of remediation and obsolete code removal, while applying analytics to efficiently structure your project



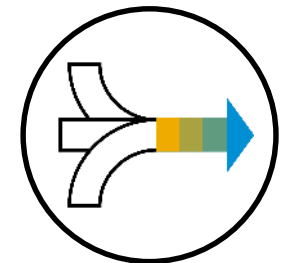
3. Downtime Optimized Conversion

for shorter system cut-over



5. Reduced integration efforts

Additional content targeted between late 2018 to early 2019



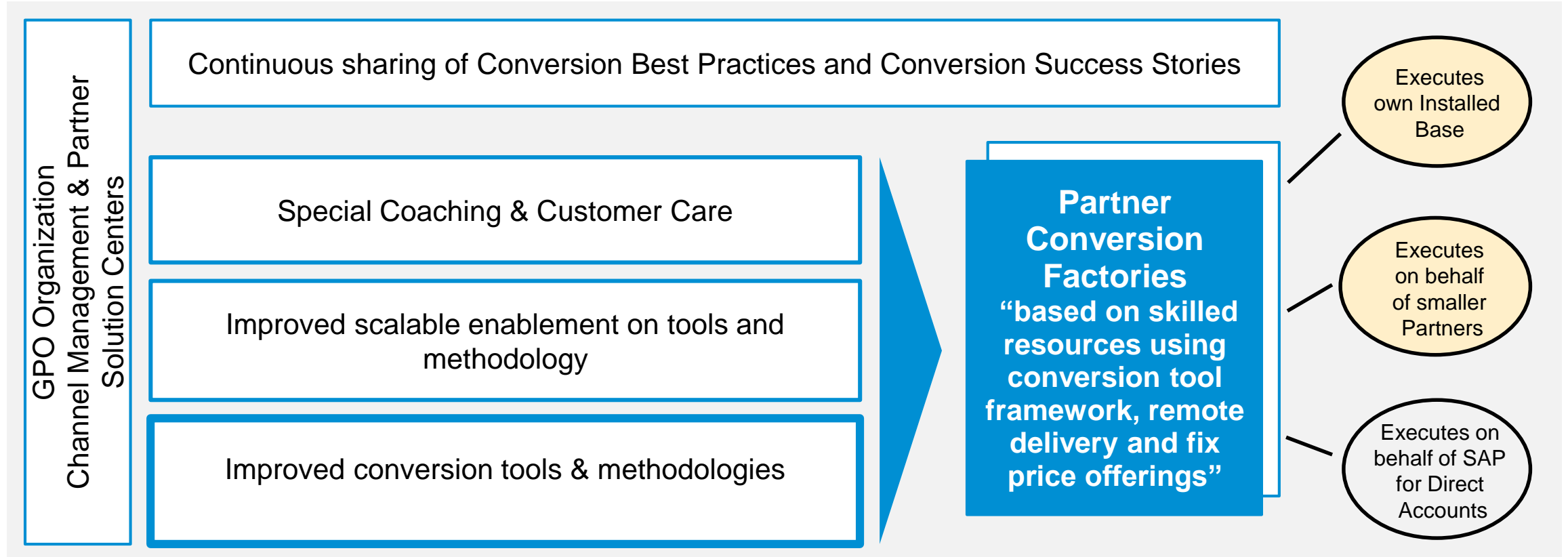
4. Improved Data Migration

more ready-to-use business objects and object modeling capabilities

While SAP continues to improve these tools, customers should note that most of these tools are available **now.**

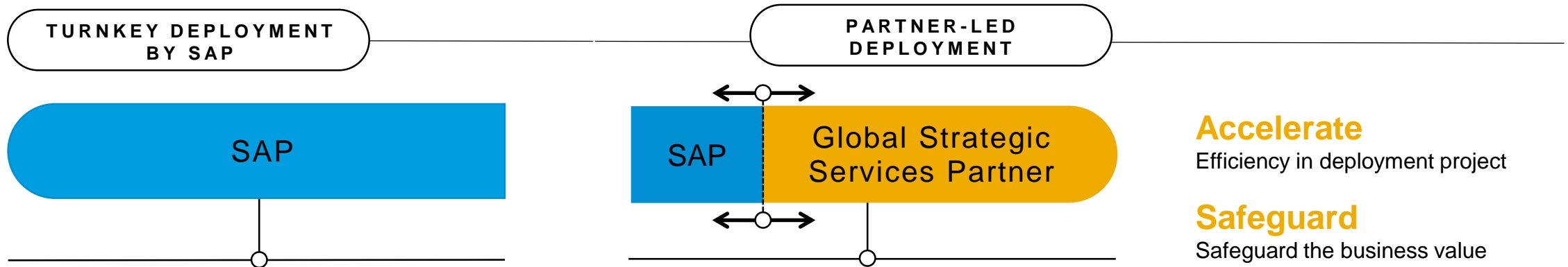
Lower project risk & cost with the GB Partner Conversion Factories

Accelerate efficient & low risk project conversions



Engagement Options – Your Choice

SAP services and accelerators drive customer success from SAP-led to Partner-led engagements (recommended)



SAP Advanced Deployment with SAP Model Company

- Maximum acceleration: 50% reduction of delivery time and 30% reduction of custom developments with SAP Model Company*
- Turn-key delivery by SAP
- Factory services with defined outcomes
- Next-practices and SAP Leonardo embedded

*) for more details visit the [customer survey](#) by an independent consulting firm

Integrated Delivery Framework with SAP Value Assurance and SAP Model Company

- Agreed responsibilities and delivery methodologies between SAP & Partner
- SAP to safeguard business value with safeguarding from Value Assurance
- SAP Model Company* Services to ensure fit-to-standard deployment
- Leverage deep domain expertise, deployment accelerators and methods of Global Strategic Service Partners

Accelerate

Efficiency in deployment project

Safeguard

Safeguard the business value

Reduce TCI with intelligent tools

Contained risks, proven mitigation

MOVE with confidence – extended customer care program

SAP S/4HANA Customer Care Program

The SAP S/4HANA Customer Care Program will help to make your SAP S/4HANA go-live project a success by offering:

- A named **Project Coach** serving as a remote contact to share best practices and collect feedback.
- A **Development Angel Team** facilitating the access to the SAP S/4HANA Development organization.
- **Management Sponsors** from the SAP development team.

The offer is free of charge. **Increased Capacity in 2019**

To nominate please send an e-mail to S4H_Customer_Care@sap.com.

Priority will be given to existing SAP ERP customers who transition to SAP S/4HANA 1809 and are willing to act as a reference.

SAP S/4HANA RIG Architectural Guidance

Engage an expert for a remote session with customers in their SAP S/4HANA project planning phase. **New in 2019**

The expert from the Regional Implementation Group (RIG) shares best practices and learnings from system conversion and new implementation projects.

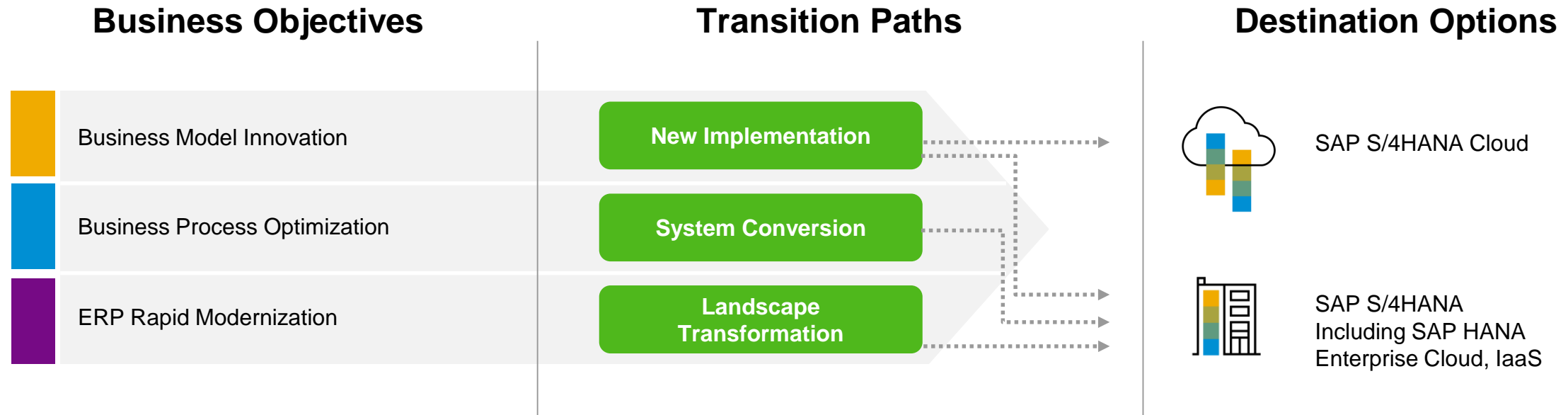
This offer complements regular pre-sales or consulting.

The offer is free of charge, and available for existing SAP ERP customers (direct and indirect channel).

SAP account teams and the SAP partner organization can nominate their customers by sending an e-mail to [Rupert Lange](mailto:Rupert.Lange@sap.com) (EMEA), [Lars Rueter](mailto:Lars.Rueter@sap.com) (APJ), [Arne Schmidthals](mailto:Arne.Schmidthals@sap.com) (Americas).

Consider your options

Match your business objectives to possible transition paths and destinations



One SAP S/4HANA: the right solution for each customer cloud journey

Cloud ERP*

ERP in the Cloud

ERP OP



SAP S/4HANA Cloud

Highly standardized, multi-tenant cloud services covering selected LoB- and industry scenarios and a comprehensive ERP scope

Rapid innovation at the lowest TCO

SAP S/4HANA Cloud, single tenant edition

Standardization, TCO and scalability of the cloud combined with the full functional scope, extensibility and reach of the SAP S/4HANA solution

Cloud standardization at attractive TCO



SAP S/4HANA

(Private cloud managed by SAP)

Individually sized infrastructure and application management services moving your system to the next generation

Your SAP guided elevation to the public cloud



SAP S/4HANA

(On-premise managed by cloud providers or customers)

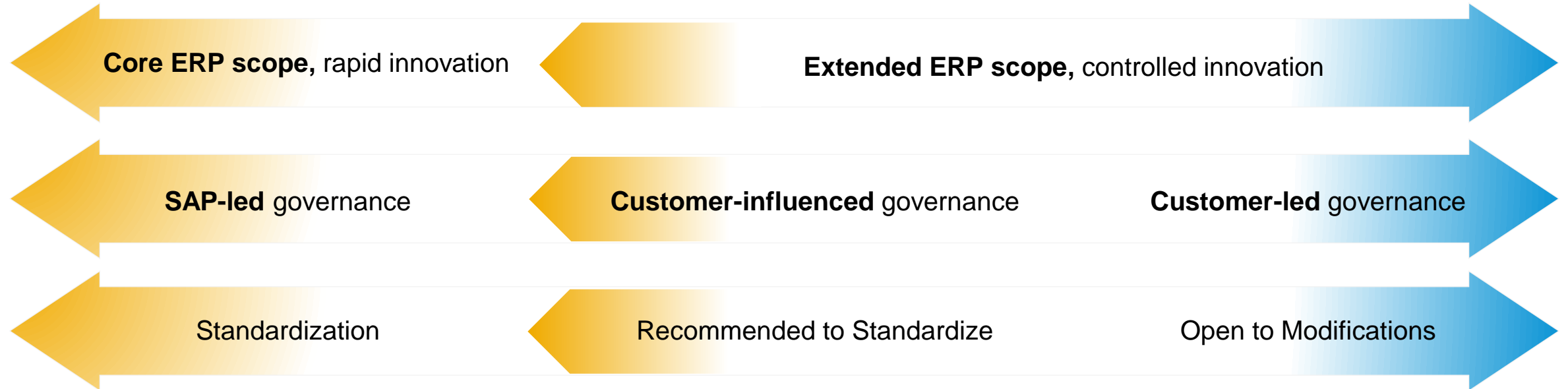
Standardized next generation ERP solution that can be run and extended according to customer preferences

Next generation ERP system for on premise use

*according to Gartner Cloud (SaaS) Definition

SAP S/4HANA Choice

Consider three dimensions: **Scope, Governance, Standardization**



SAP S/4HANA Cloud

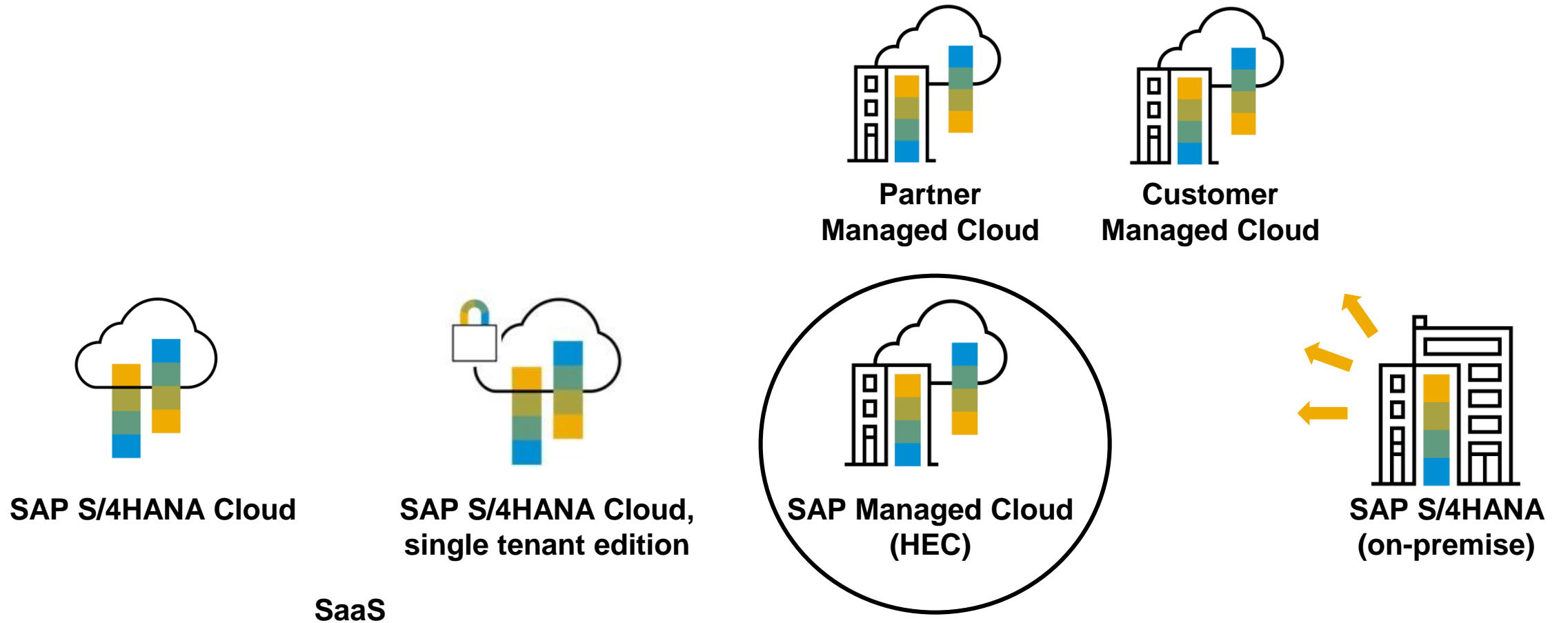


**SAP S/4HANA Cloud,
single tenant edition**



**SAP S/4HANA
HANA Enterprise Cloud (HEC)**
(Private cloud managed by SAP)

Digital Core



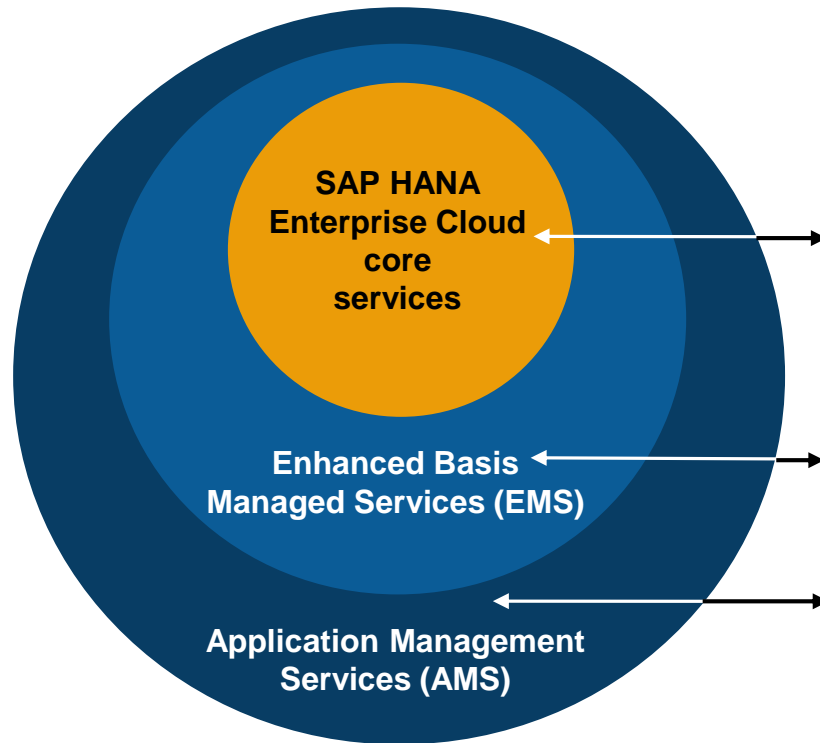
Cloud ERP ←

ERP In the Cloud

→ ERP On Prem

SAP HANA Enterprise Cloud - Managed Services

SAP's HEC Service is expanding to provide one-stop for customers to request a larger scope of managed services, at customer option and via on-demand service requests.



SAP HANA Enterprise Cloud (core) services

- Services included under monthly SAP HEC subscription, including:
 - ✓ Guaranteed Application level SLA
 - ✓ Unique reference architecture
 - ✓ SAP HANA database management
 - ✓ Infrastructure and operating system management and monitoring
 - ✓ Customer engagement services
 - ✓ Software available by subscription

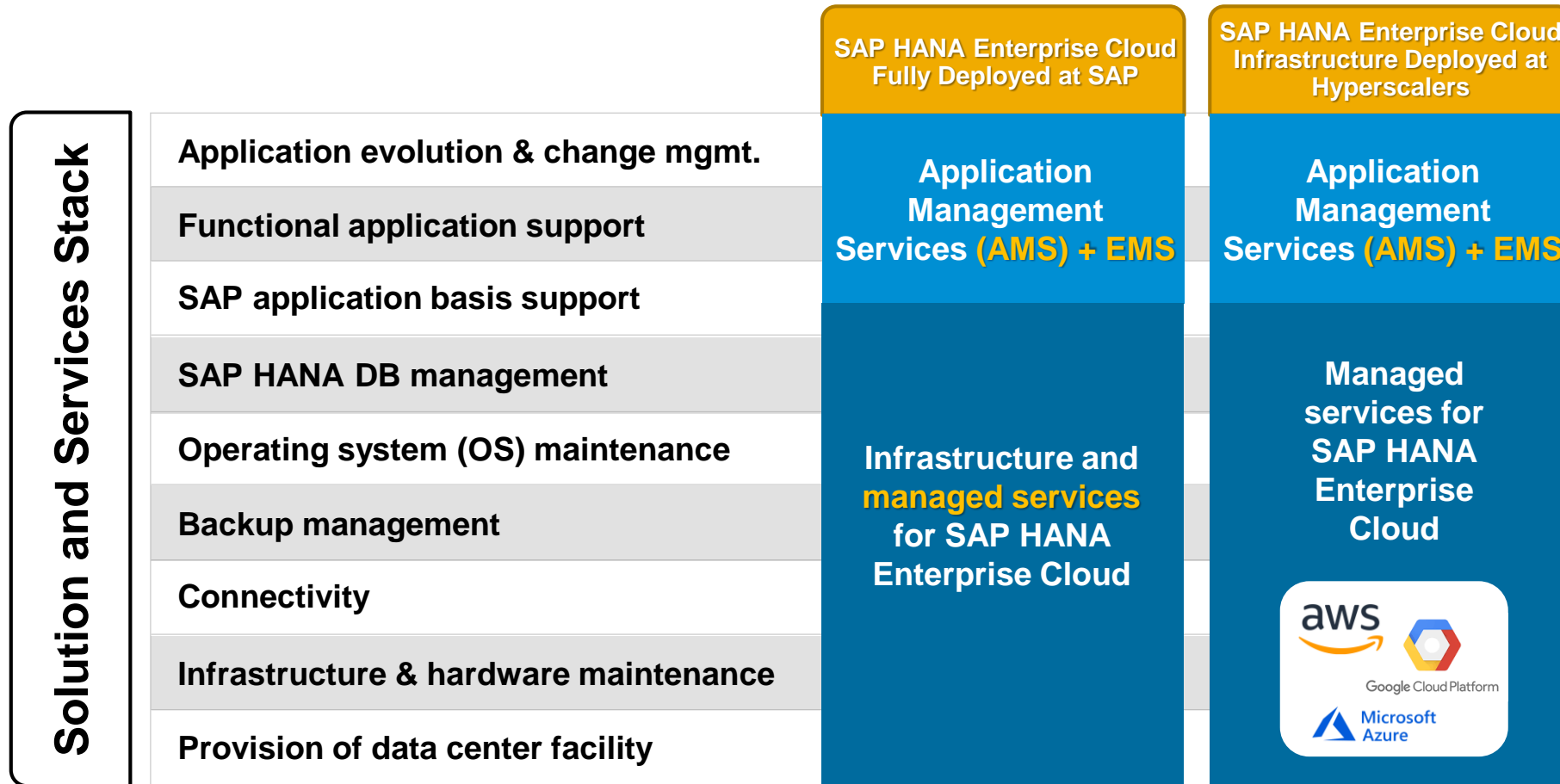
Enhanced Basis Managed Services “EMS”

- “Bucket” of pre-paid EMS hours, applied based on customer choice
- Services requested and delivered without need for any Change Request
- Service Hour Block choice is standard for all SAP HEC accounts- mandatory to streamline routine service delivery

Application Management Services “AMS”

- Services which can be added to core SAP HEC Services “production” contracts
- Support and monitoring for the [functional application layer](#) of the software solution
- AMS offers delivery based on SLA and a monthly subscription fee.

SAP HANA Enterprise Cloud & Hyperscalers



SAP delivers HANA Enterprise Cloud Managed Services and Support to the same high standard of service on hyperscale clouds, than we deliver on our own datacenters.

SAP HANA Enterprise Cloud for every need

Digital Business at Your Pace – SAP Makes it Simple

Cloud Start

- Your SAP HANA project in weeks (non-production)
- Run multiple projects; flexibility to shift to prod
- Low-risk entry point; penalty-free cancellation
- 1-12 month contracts; can utilize existing licenses

Production

- Integrated SAP support (App & IT stack)
- Subscription-based or utilize existing licenses
- Functional / Technical Managed Services
- 36-60 month contracts; scale up/down



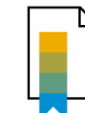
Assessment



Build Your Road Map



Scope & Pricing



Contract



Deployment

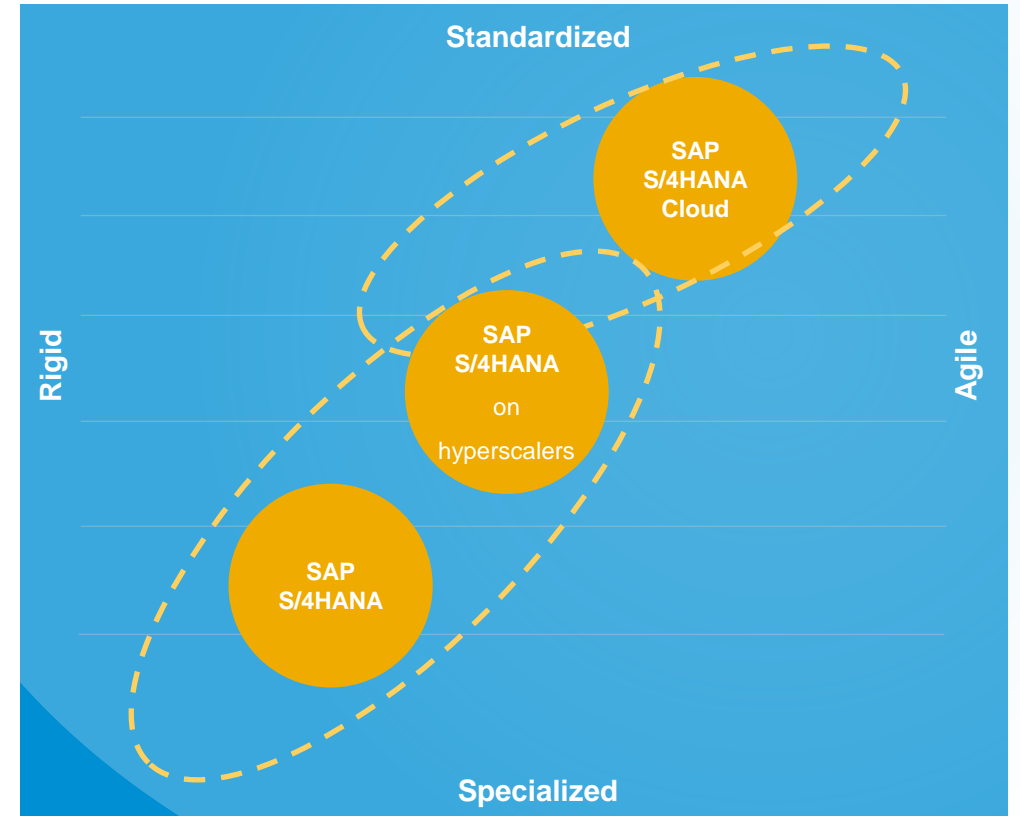


Start Innovating

Higher standardization drives greater agility

Only with SAP S/4HANA does SAP offer a consistent, intelligent ERP solution across all environments, working in harmony so you can better leverage hybrid scenarios (ex. 2-tier, Group Reporting in the Cloud, etc.)

- **SAP S/4HANA Cloud:** The fastest path to the Intelligent Enterprise, continuous innovation
- **SAP S/4HANA:** Offers the customer complete control, agility offered for IT through hyperscalers (Azure, AWS, GCP) & SAP HANA Enterprise Cloud



Thank you.

Contact information:

Riccardo Sampietro

SAP Presales Senior Advisor

riccardo.sampietro@sap.com

Follow us



www.sap.com/contactsap

© 2019 SAP SE or an SAP affiliate company. All rights reserved.

No part of this publication may be reproduced or transmitted in any form or for any purpose without the express permission of SAP SE or an SAP affiliate company.

The information contained herein may be changed without prior notice. Some software products marketed by SAP SE and its distributors contain proprietary software components of other software vendors. National product specifications may vary.

These materials are provided by SAP SE or an SAP affiliate company for informational purposes only, without representation or warranty of any kind, and SAP or its affiliated companies shall not be liable for errors or omissions with respect to the materials. The only warranties for SAP or SAP affiliate company products and services are those that are set forth in the express warranty statements accompanying such products and services, if any. Nothing herein should be construed as constituting an additional warranty.

In particular, SAP SE or its affiliated companies have no obligation to pursue any course of business outlined in this document or any related presentation, or to develop or release any functionality mentioned therein. This document, or any related presentation, and SAP SE's or its affiliated companies' strategy and possible future developments, products, and/or platforms, directions, and functionality are all subject to change and may be changed by SAP SE or its affiliated companies at any time for any reason without notice. The information in this document is not a commitment, promise, or legal obligation to deliver any material, code, or functionality. All forward-looking statements are subject to various risks and uncertainties that could cause actual results to differ materially from expectations. Readers are cautioned not to place undue reliance on these forward-looking statements, and they should not be relied upon in making purchasing decisions.

SAP and other SAP products and services mentioned herein as well as their respective logos are trademarks or registered trademarks of SAP SE (or an SAP affiliate company) in Germany and other countries. All other product and service names mentioned are the trademarks of their respective companies.

See www.sap.com/copyright for additional trademark information and notices.