

Slice The
Elephant



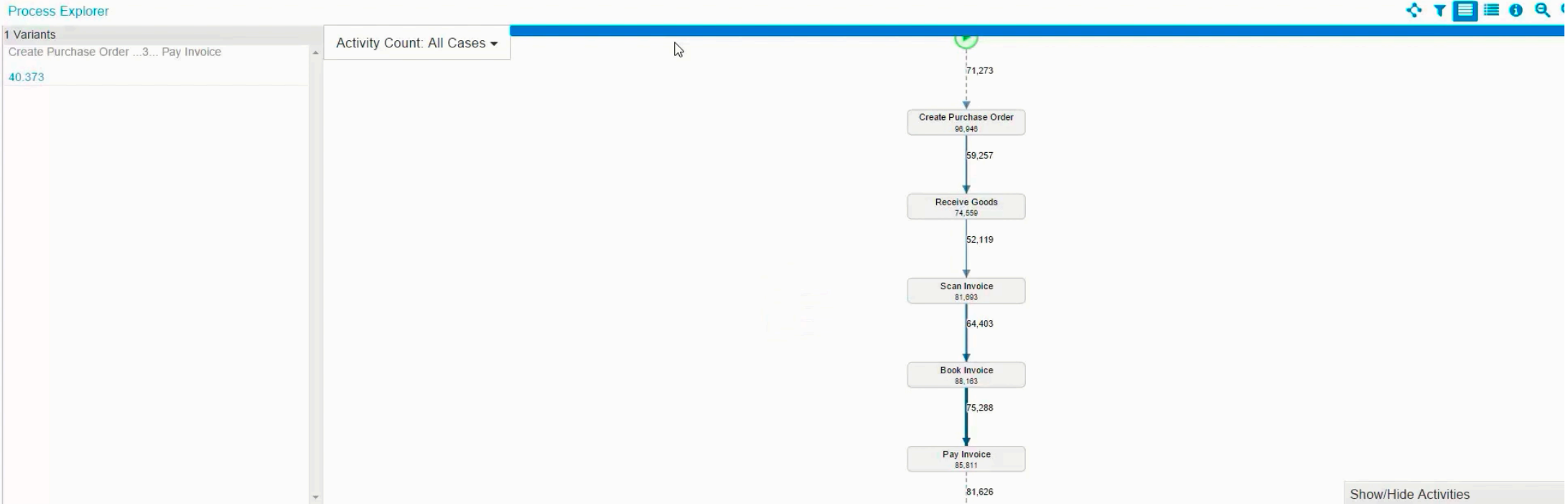
Elephant Head = Processes

- Do you know your processes?
- Is your team using short-cuts to speed-up your business?
- Are you reviewing your processes yearly?



SAP Process Mining by Celonis - P2P Process

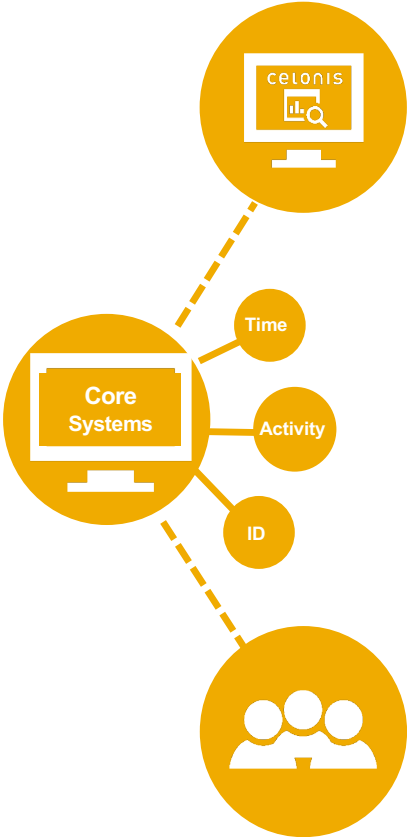
Purchase Orders: 35,214 # Purchase Order Items: 96,946 Purchase Order Value: 143,403,83



96.946 Cases (41,6%)



What is SAP Process Mining?



Full Transparency

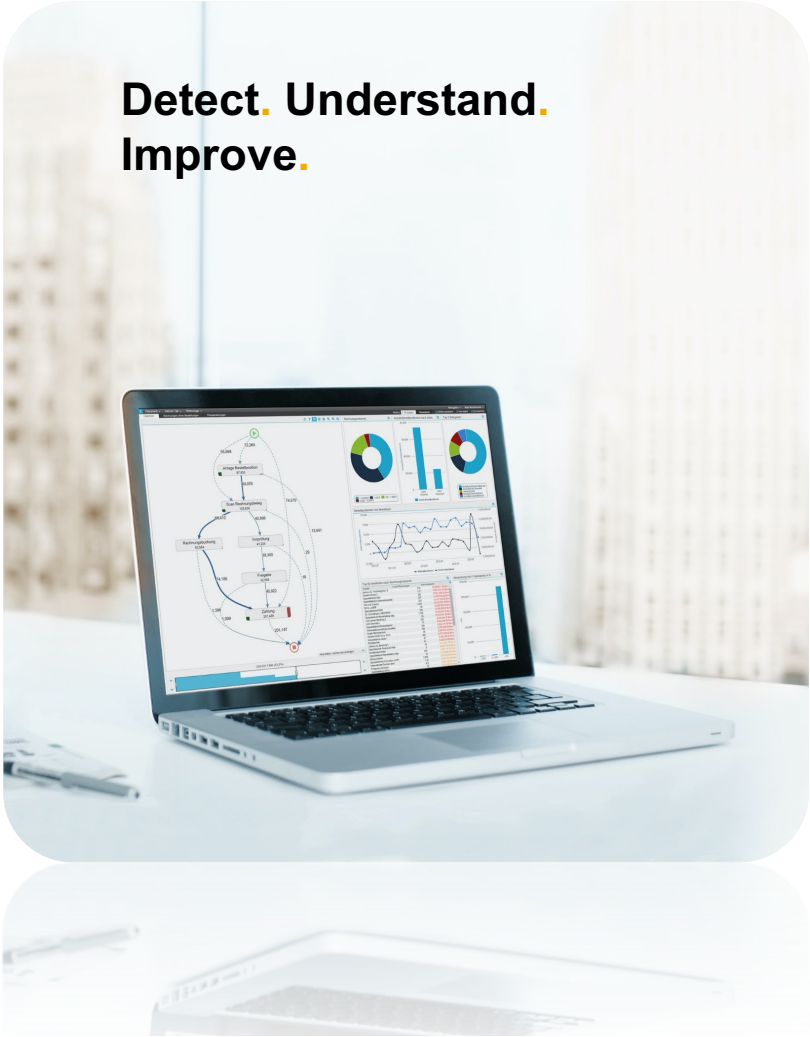
Actual process flows are visualized in real time

Digital footprints

SAP Process Mining finds & reconstructs digital workflow traces

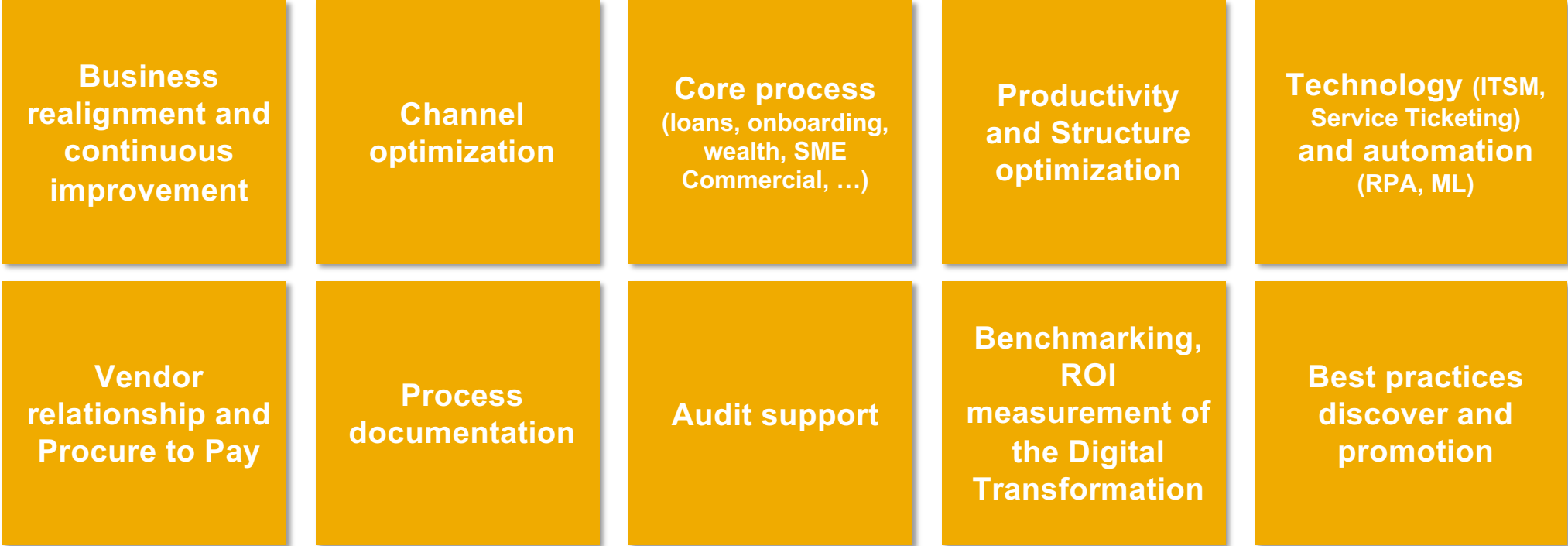
Digital-based work

Every workflow is supported by a digital systems



Where Process Mining can help:

Strategies for Improving Efficiency



Customer Example

<https://youtu.be/XBI2PGSYIOI>



Schlumberger: Customer Snapshot

Using SAP Process Mining from the Top Down to Guide Process Transformation

- Prioritizing previously hidden process variances, impacting lead times and creating rework
- Discovered that nearly 20% of all purchase requisitions were deviating from contracted prices, presenting an opportunity to better qualify and adapt auto purchase order policy and thresholds
- Setting new key performance indicators for touchless Invoice Automation dashboard, examining touch percentage and progress over time
- In October 2018, made the decision to roll out Celonis to the full enterprise to support strategic transformation initiatives

"we saw a unique opportunity to drive process standardization and optimization, and to significantly ease the inherent challenges associated with the ERP consolidation we are embarking on...we're now moving forward to deploy Celonis to accelerate business transformation enterprise wide."

- **Eric Abecassis, CIO, Schlumberger**



SAP Process Mining

- ✓ Identify **really** what happens in your processes
- ✓ Determine **variations** and **root causes**
- ✓ Optimize **continuously** your process and **business Results**
- ✓ **Save Time** on mapping your process to SAP S/4HANA

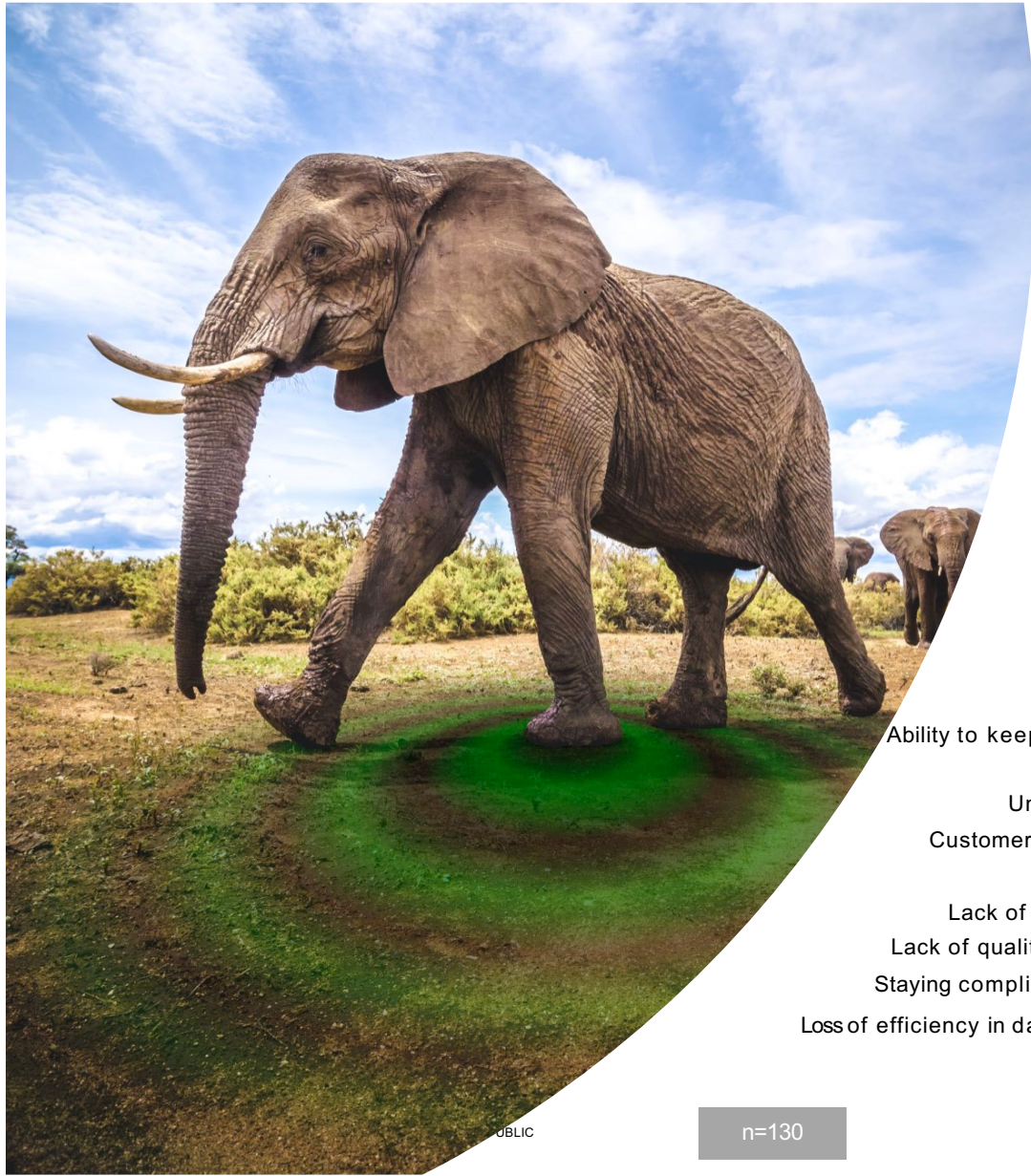


Foot = Data

The basement of your body, your organization, your business

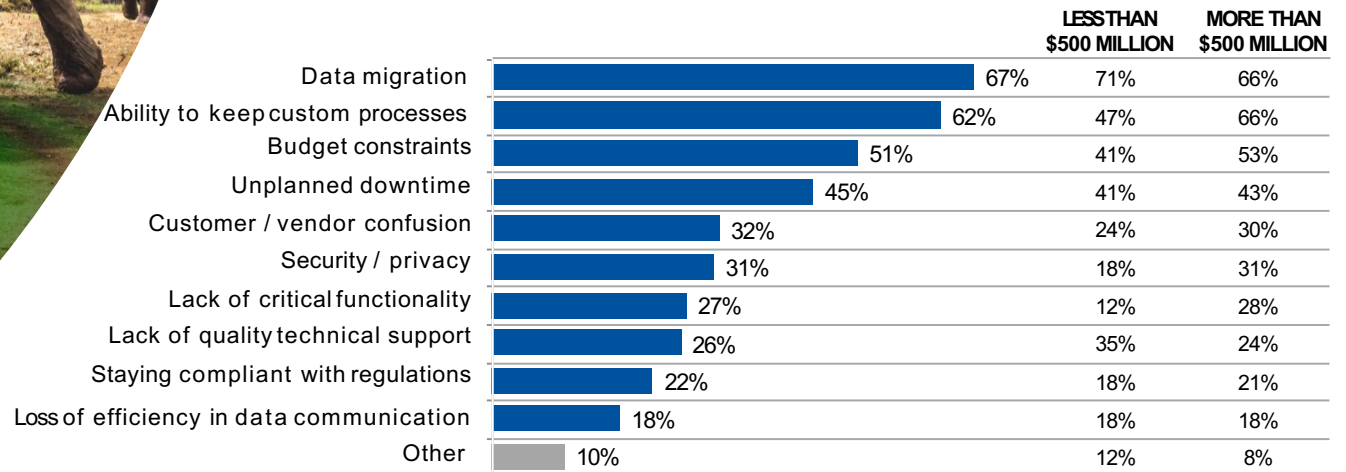
Data migration and the ability to retain custom processes are the top concerns related to an SAP S/4HANA transition.





SAP S/4HANA Migration Concerns

Q: Which of the following are (or were) key concerns of yours regarding your company's move to SAP S/4HANA?



PUBLIC

n=130

Traditional Data Migration Approach

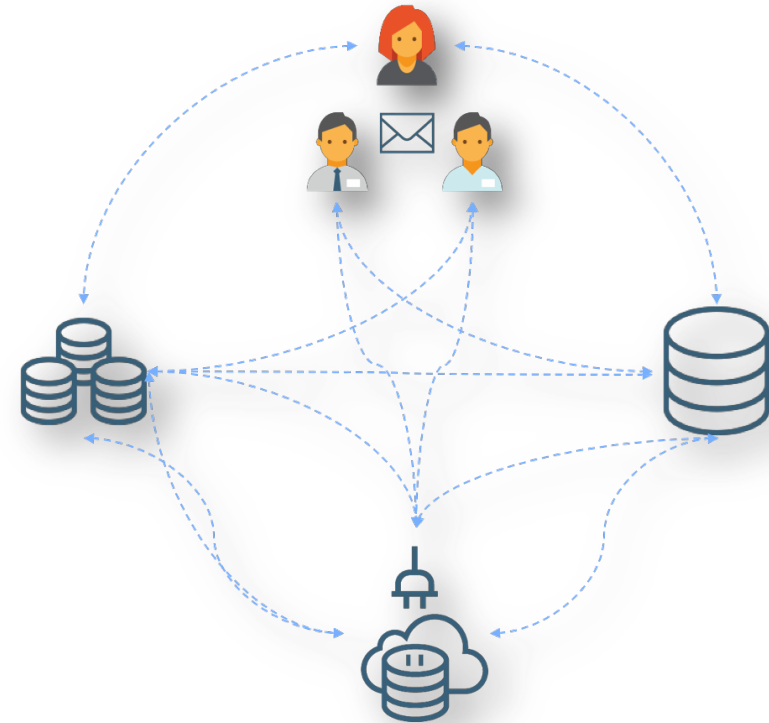
Means:

- Ad-hoc planning
- Limited project oversight
- High complexity
- Siloed decision-making
- Time-consuming, custom coded integrations
- Poor communication

Results

- Underestimated cost, scope, and risks
- Missed Schedules
- Low Data Quality

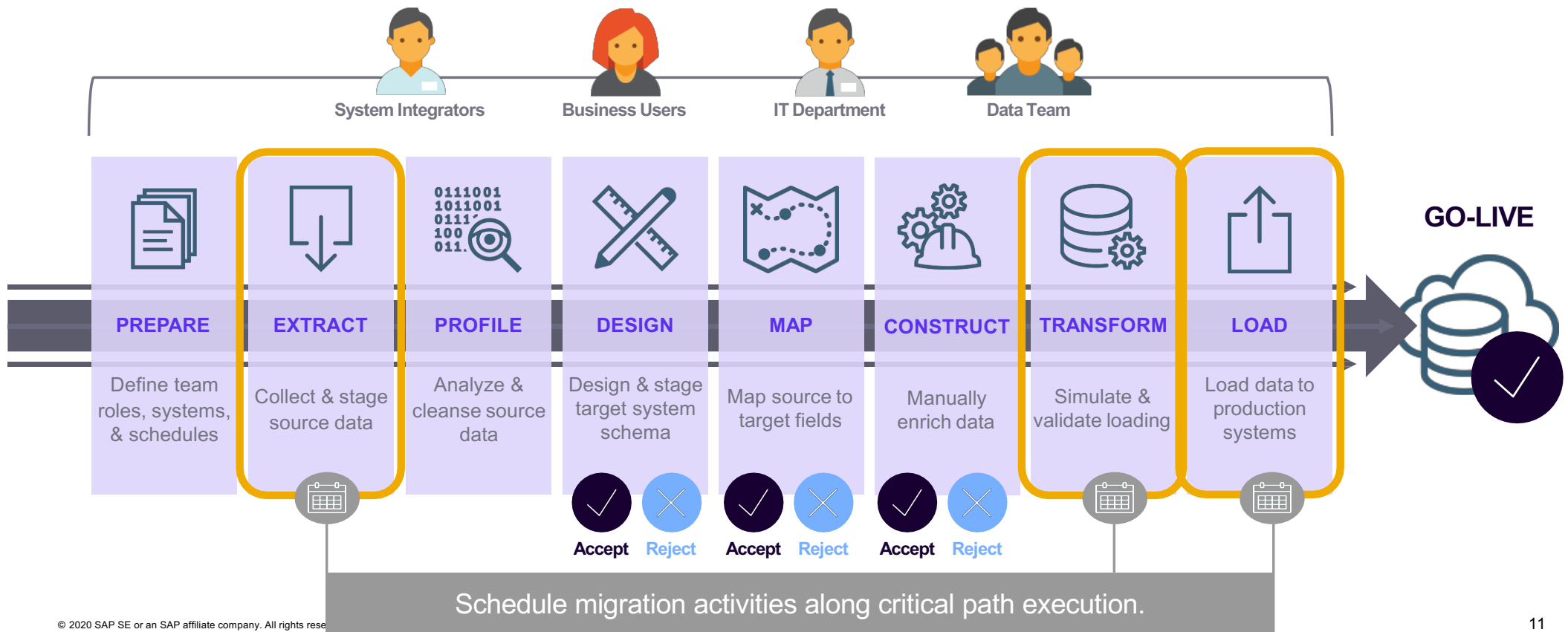
NET: High risk of project failure



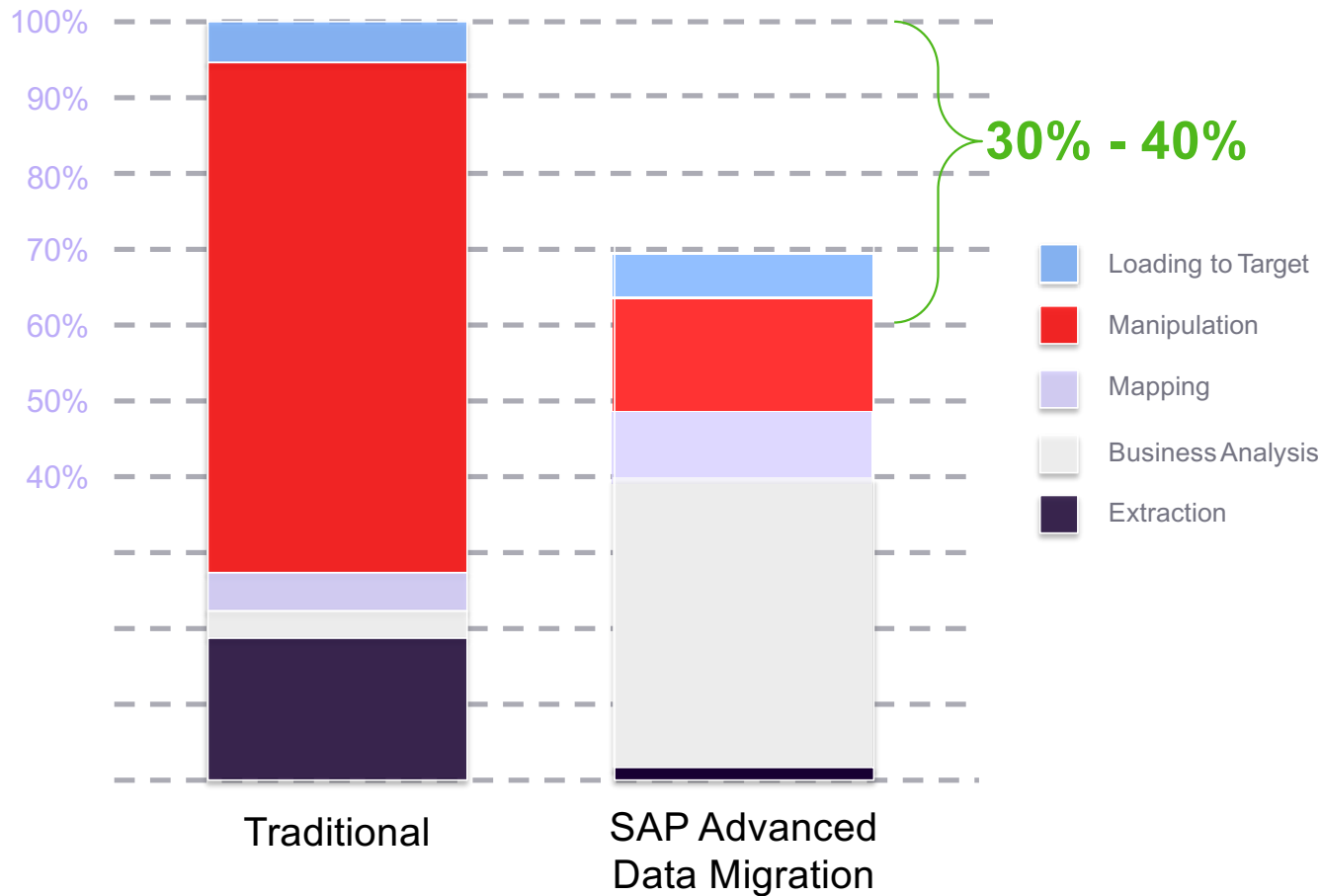
SAP Advanced Data Migration Change the Paradigme



Orchestrate Migration Activities *across* Your Team



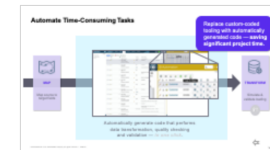
Differences in Approach



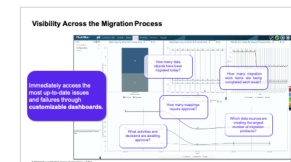
Cleanse & Transform Data



Automate Time-Consuming Tasks



End-To-End Visibility Across the Migration Process



Cleanse & Transform Data

Table Field (Results)

FIELD DEFINED ORDER	FIELD NAME	FIELD DATATYPE	FIELD DEFINED LENGTH	MAX FIELD LENGTH	BLANK PERCENTAGE	UNIQUE PERCENTAGE	MIN VALUE	MAX VALUE	WARNING
1	CustomerID	nvarchar	5	5	0	100	ALFKI	WOLZA	
2	CompanyName	nvarchar	40	36	0	100	Alfreds Futterkiste	Wolski Zajazd	
3	ContactName	nvarchar	30	23	0	100	Alejandra Camino	Zbyszek Piestrzeniewicz	
4	ContactTitle	nvarchar	30	30	0	13.186813	Accounting Manager	Sales Representative	
5	Address	nvarchar	60	46	0	100	1 rue Alsace-Lorraine	Walsenweg 21	
6	City	nvarchar	15	15	0	75.824176	Aachen	Warszawa	
7	Region	nvarchar			0		AK	WY	
8	PostalCode	nvarchar			0		01-012	W03 6FW	
9	Country	nvarchar			0		Argentina	Venezuela	
10	Phone	nvarchar			0		(02) 201 24 67	981-443655	
11	Fax	nvarchar			0		(02) 201 24 68	981-443655	

BLANK PERCENTAGE	UNIQUE PERCENTAGE
0	100
0	100
0	13.186813
0	100
0	75.824176
65.934066	20.879121
1.098901	95.604396
0	23.076923
0	100
24.175824	76.923077

Define how data is to be transformed onto target systems through custom rules.

Target Design

OBJECT ID	PRIORITY	NAME	DESCRIPTION	DESIGN STATUS	USAGE	SYSTEM TYPE ID	TARGET SYSTEM TABLE NAME
Customer	731	IKNA1	General Data in Customer Master	In Design	Natural	SAP	KNA1

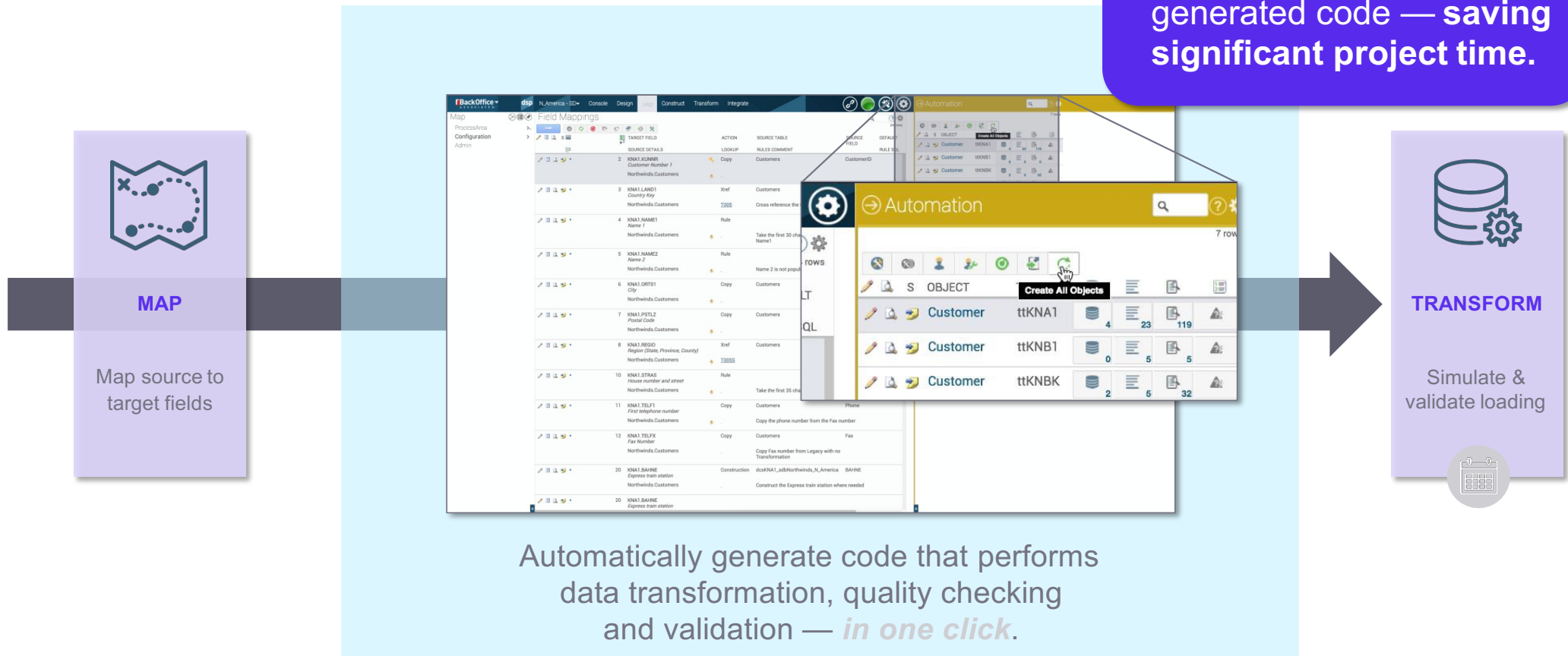
target Fields

FIELD ORDER	FIELD GROUP ID	NAME	DISPLAY NAME	USAGE	LOOKUP TABLE	CRITICALITY	REQUIRED	KEY FIELD	VERIFY POST LOAD
20		BAHNE		Natural		Medium			
		Express train station				Conditional			
21		BAHNS		Natural		High			
		Train station		[Choose one]		Optional			
25		BRSCH		Natural	T016	[None]	Business Required		
		Industry key				Technical Required			
36		KTOKD		Natural	T077D	Conditional			
		Customer Account Group				Optional			
		Customer Account Group			T077D	Business Required			
42		NAME3		Natural		Medium			
		Name 3				Conditional			
43		NAME4		Natural		High			
		Name 4				Business Required			

Improve the quality of source data before loading to the target system with embedded profiling tools.

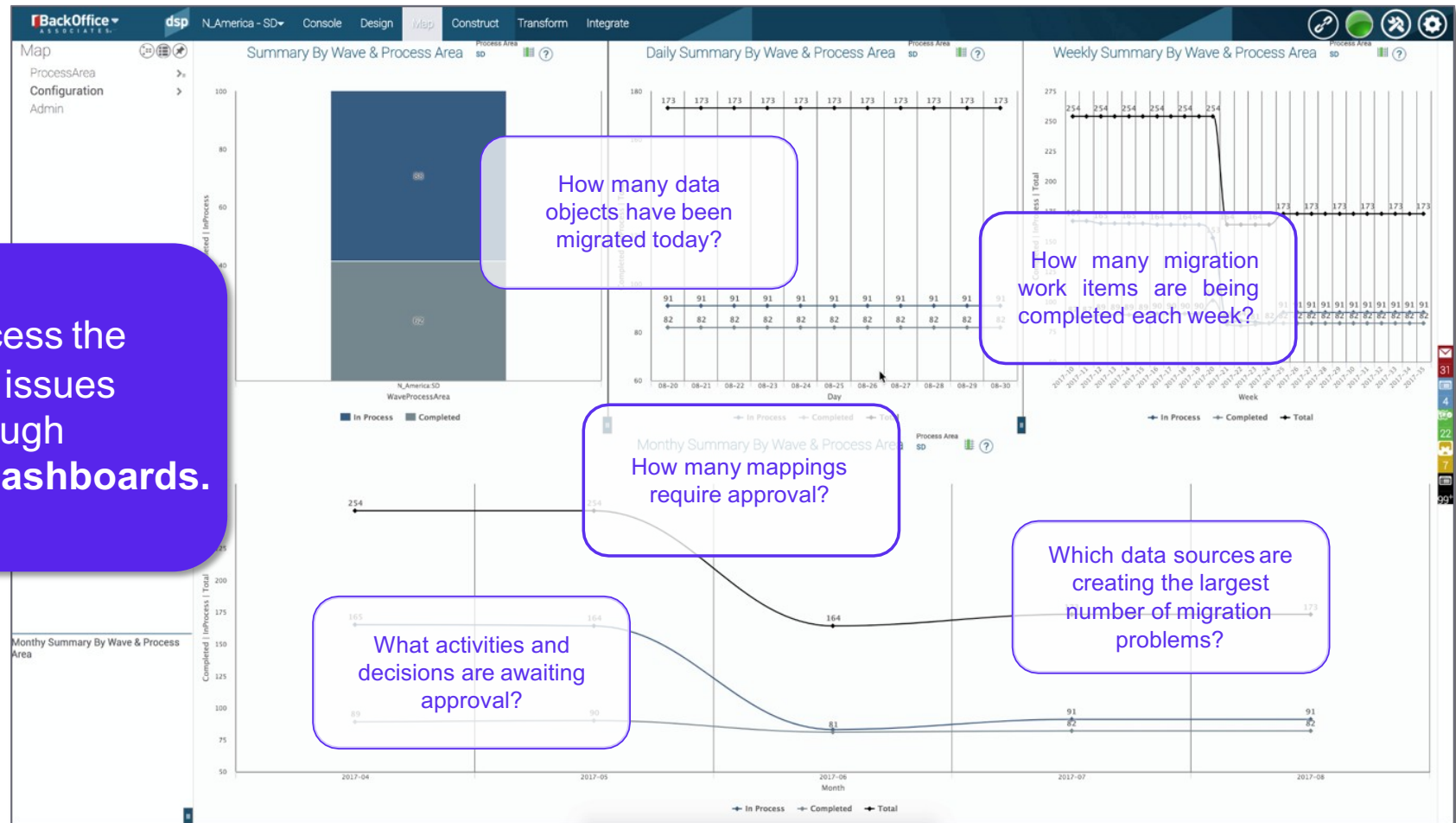
Automate Time-Consuming Tasks

Replace custom-coded tooling with automatically generated code — **saving significant project time.**



Visibility Across the Migration Process

Immediately access the most up-to-date issues and failures through customizable dashboards.



SAP Advanced Data Migration

Change the Paradigme

- ✓ Transparent and Efficient Migration Management
- ✓ Reduce Complexity & Cost
- ✓ Fast, Automated Migrations and Validations
- ✓ Complete, Accurate and Consistent Data
- ✓ Reduce Risks
- ✓ Reusable and Repeatable Migration Projects

SANOFI



KERRY

PHILIPS
Healthcare

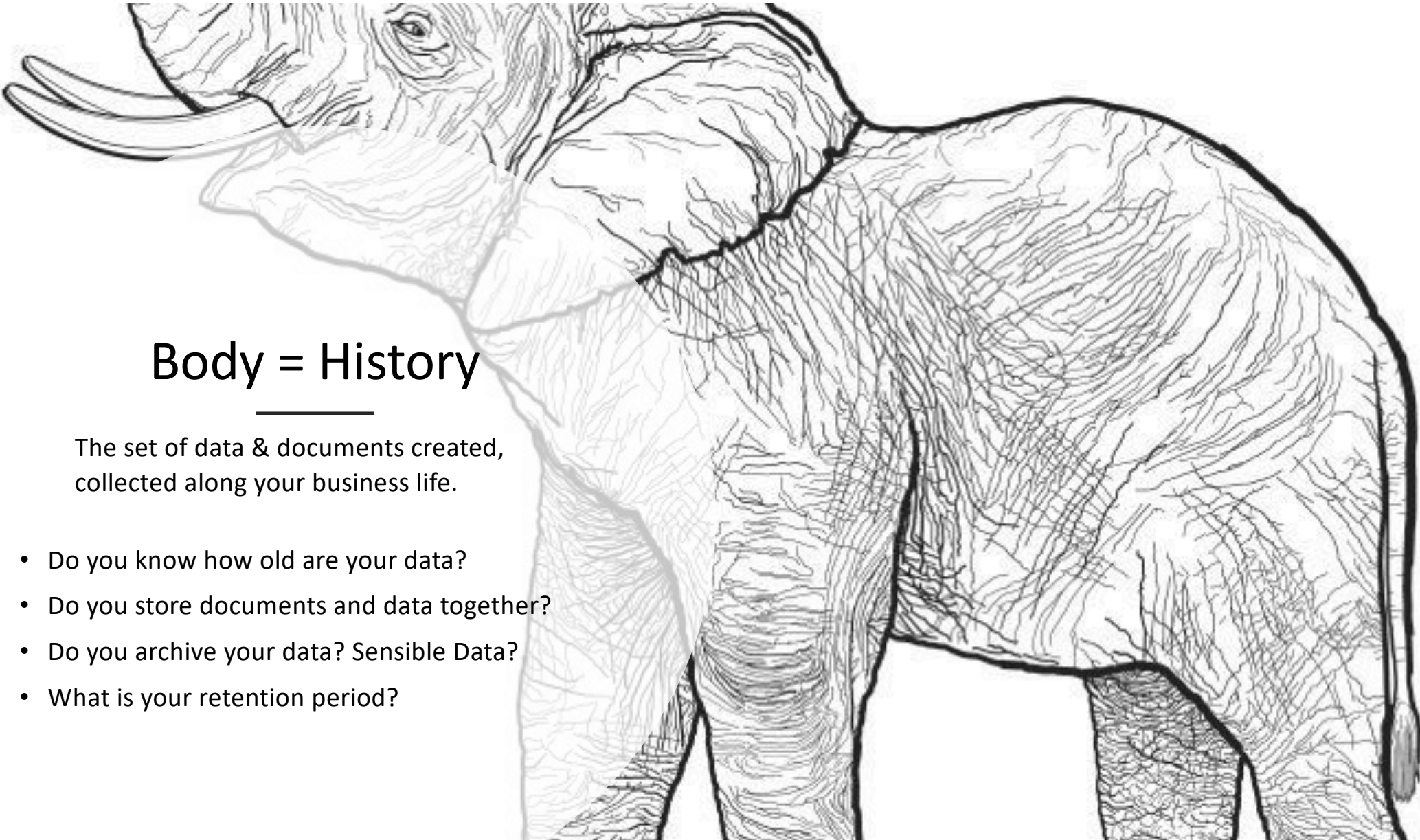
brakes

Sacyr

HELM

MERCADONA



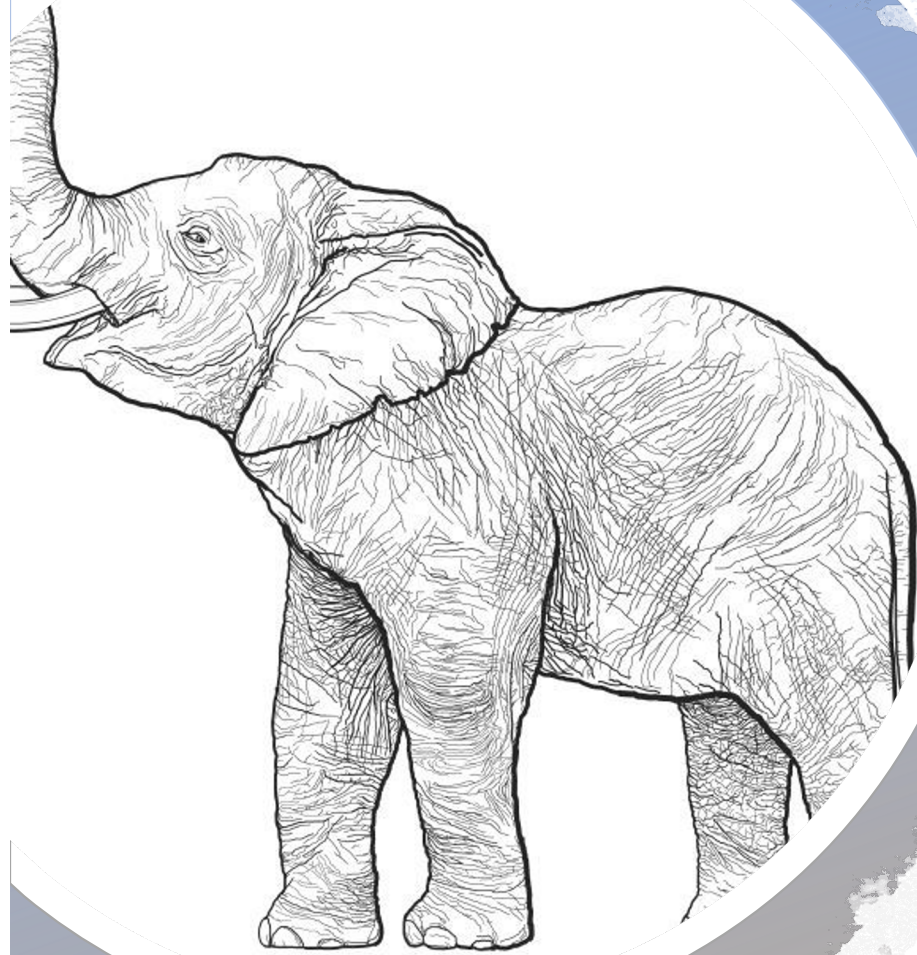


Body = History

The set of data & documents created,
collected along your business life.

- Do you know how old are your data?
- Do you store documents and data together?
- Do you archive your data? Sensible Data?
- What is your retention period?

Archiving & Document Access a way to drive the change



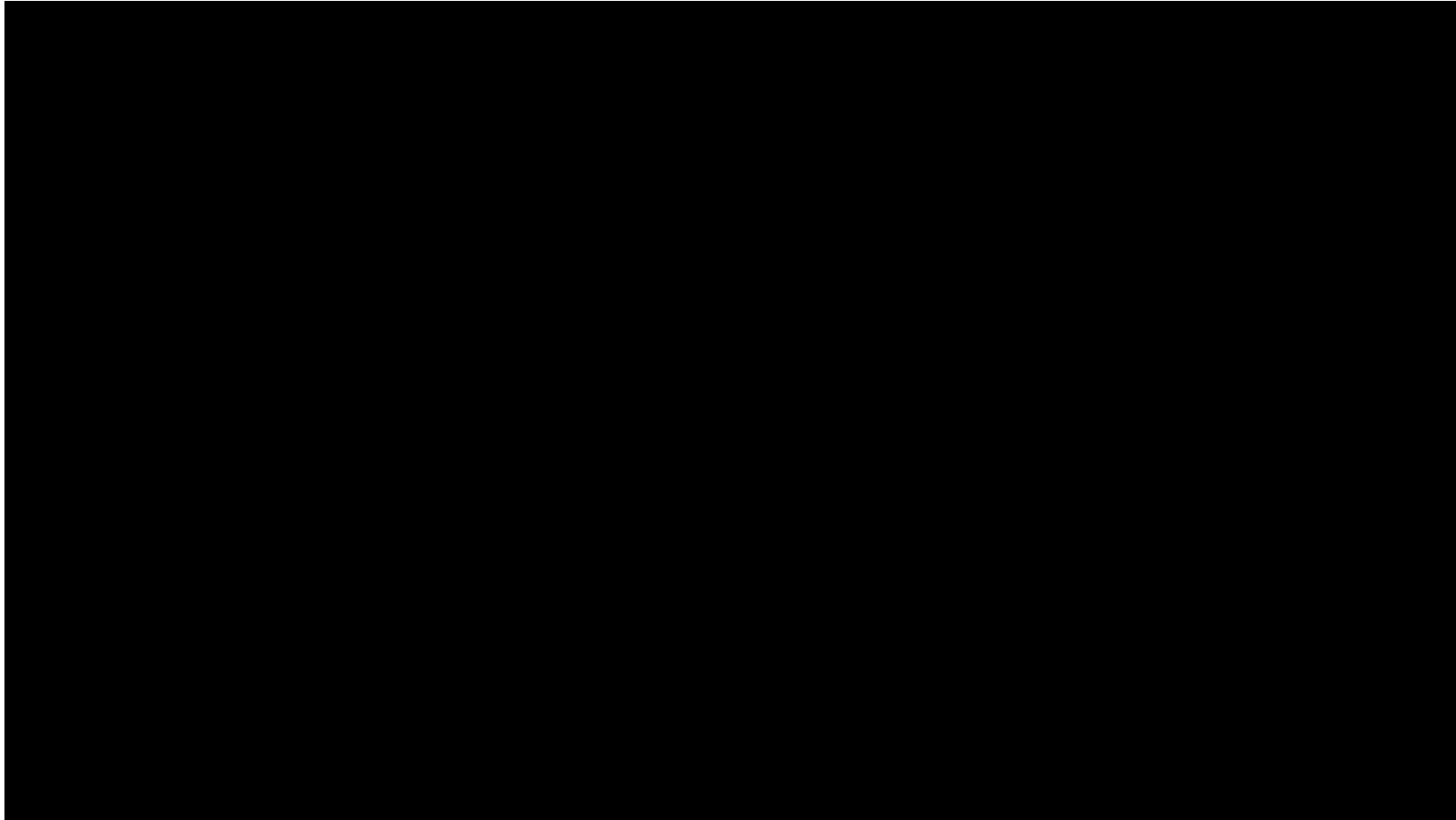
SAP Data Archiving

- ✓ Data Archiving is a must for a SAP S/4HANA Migration Project
- ✓ Make transparent the Data & Document archived between ERP and SAP S/4HANA
- ✓ Gives to IT the control of data system growth.
- ✓ It's compliant with SAP Information Lifecycle Management

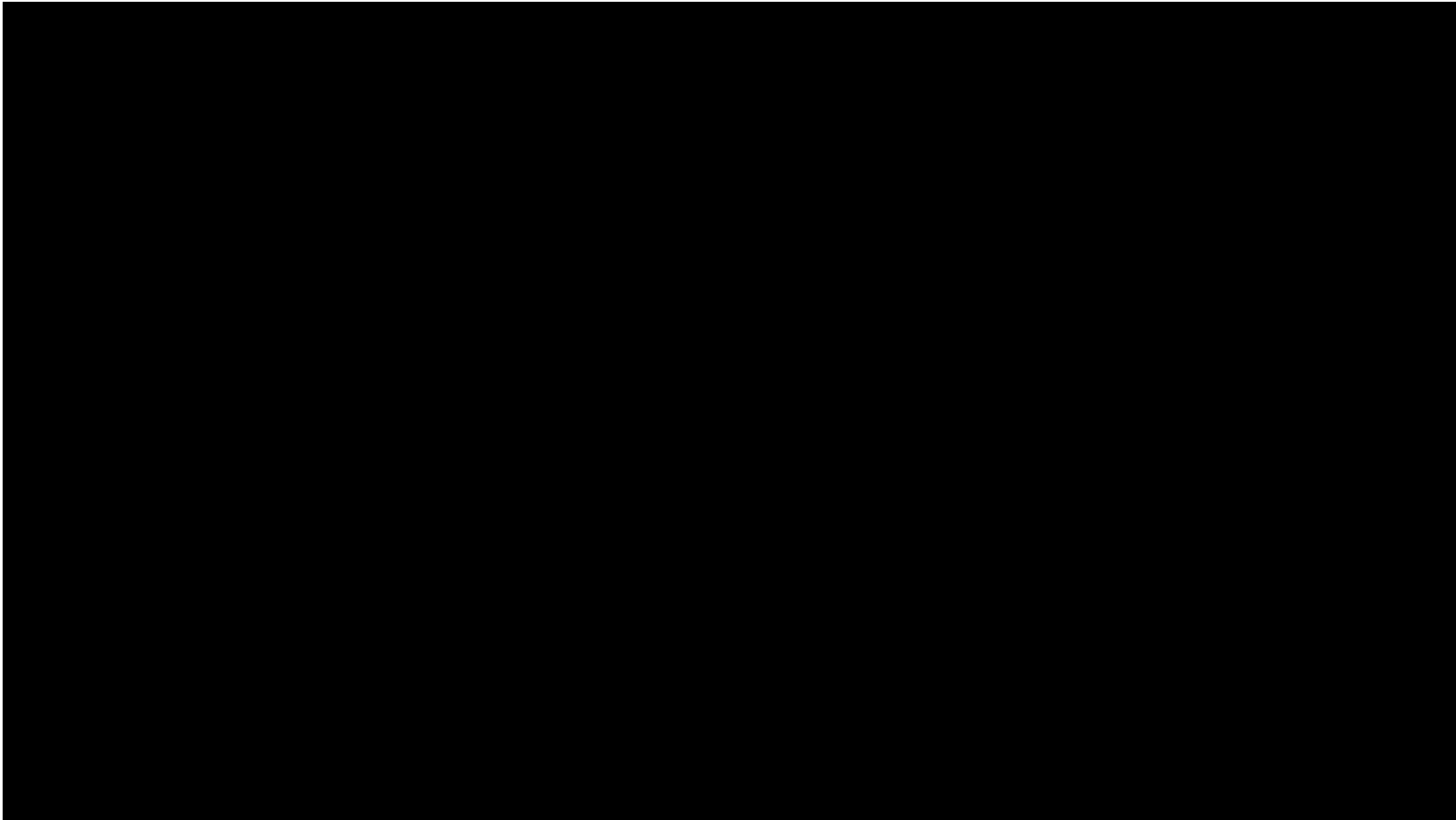
SAP Document Access

- ✓ Make transparent, to the business, the access to archived Data along daily activity
- ✓ Interoperate with SAP NetWeaver ILM.
- ✓ Native integration with MS Office and Office 365

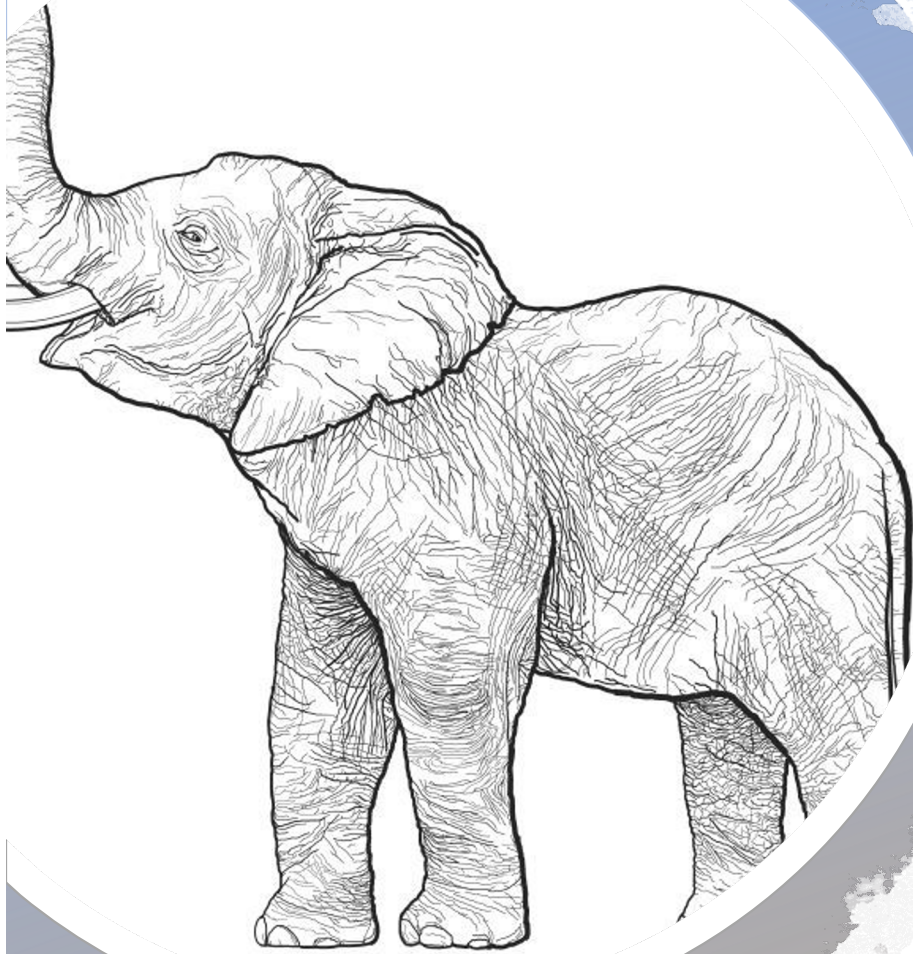
Keep Your historical Data Archived always reachable by your business



Change your Experience with Data Archived & Documents in SAP & NON



Archiving & Document Access an opportunity with SAP S/4HANA migration



- ✓ Data Archiving Reduce DB size making the archive visible into new S/4HANA system
- ✓ Archiving is complaint with GDPR and ILM tools
- ✓ Document Access bring a new user experience between Document, Data & SCP
- ✓ Digitalization is a reachable target
- ✓ Additional document functionalities & synergies with Microsoft are enabled by SAP Document Access.

100%

Elimination of employee paper files

Paper Elimination



25%

Less unplanned deductions for savings of 500 KUSD

Document Access



37%

Reduction of database size by 37 % to 2,7TB

Data Archiving

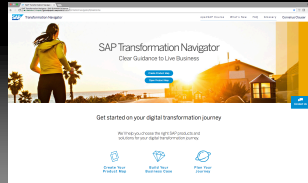




Proboscis = Tools

Make Safer your Migration Path
via Tools Delivered By SAP

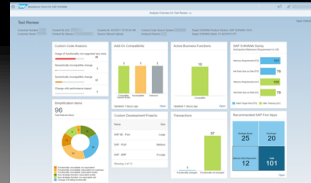
Supporting Tools and Services on the way to an S/4-centric landscape



All SAP products



SAP Transformation Navigator



ERP | S/4HANA



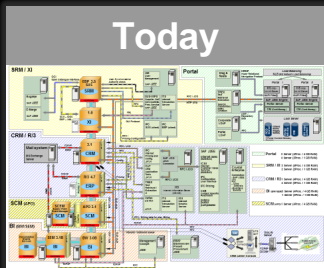
Readiness Check



ERP



Pathfinder



What product map does SAP recommend to me?

How can I identify benefits and track them in the future?

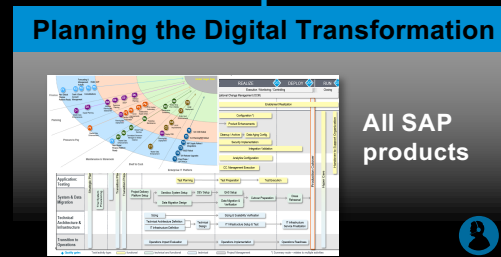
How can I best prepare my transformation?

How do I create my detailed execution plan?

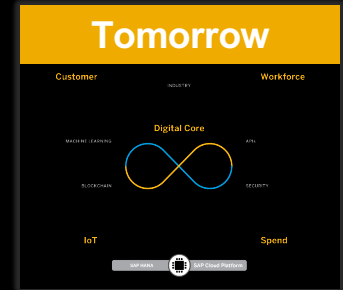
What improvements are possible in the meantime?



ERP | S/4HANA



All SAP products



Service

Self-Service Tool

SAP Readiness Check for SAP S/4HANA



Custom Code & Custom Dev

- ✓ Custom Code must be analyzed with respect to SAP S/4HANA compliance, based on the SAP simplification database
- ✓ SAP Readiness Check provides BOM of affected objects as well as SAP Custom Development Projects (CDP's)
- ✓ An in-depth custom code management activities to follow during project execution

AddOn's & Business Functions

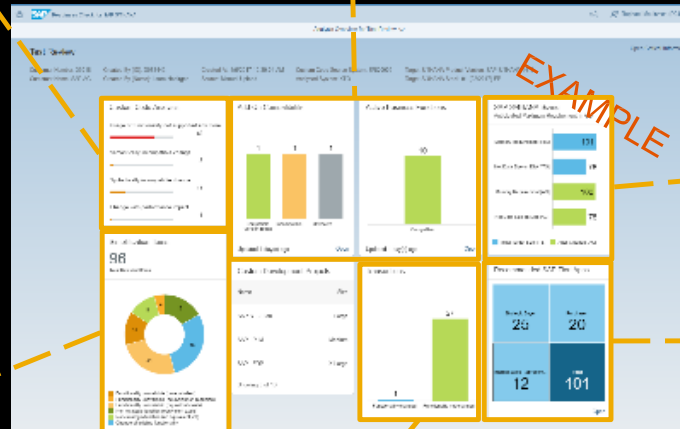
- ✓ SAP AddOn's and Business Functions as well as 3rd party AddOn's have to be checked for their compatibility with SAP S/4HANA
- ✓ SAP software is listed and rated
- ✓ 3rd party software is listed only

S/4HANA Sizing

- ✓ To prepare for SAP S/4HANA, a system sizing is the baseline for further discussions regarding the future target size
- ✓ SAP Readiness Check summarizes the technical sizing result so that customers can further engage internally, with SAP or with partners to discuss the future target system size

Simplification items

- ✓ Simplification Items represent application or architecture changes in comparison to ERP
- ✓ About 470 Simplification Items exist for SAP S/4HANA 1610
- ✓ They are grouped by business priority (e.g. Core Finance) and industry, respectively



Transactions

- ✓ SAP GUI transactions replaced or deprecated in SAP S/4HANA, such as Classic MM-PUR GUI transactions

Recommended Fiori Apps

- ✓ Fiori apps recommended based on the transaction usage history in the evaluated system



Proboscis = Tools

water and food are the elements with which
you can grow healthy and strong towards
SAP S/4HANA

Slice The Elephant



THANK YOU



“Imagination is more important than knowledge.”

— Albert Einstein

SAP

SAP

Amedeo Prodi
SAP Enterprise Architect

SAP Italia S.p.A.
ENERGY PARK - Edificio 03 Via Monza 7/ a -
20871 Vimercate (MB)

T +39-039-6879.620

M +39-335-7355618

F +39-039-6091005

E amedeo.prodi@sap.com

<http://www.sap.com/italy>