



# SAP ALM Roadshow 2024 - Dubai Edition

Achieving ALM Excellence for SAP  
S/4HANA Cloud and Hybrid  
Customers

April 30, 2024

Confidential



# Disclaimer

The information in this presentation is confidential and proprietary to SAP and may not be disclosed without the permission of SAP. Except for your obligation to protect confidential information, this presentation is not subject to your license agreement or any other service or subscription agreement with SAP. SAP has no obligation to pursue any course of business outlined in this presentation or any related document, or to develop or release any functionality mentioned therein.

This presentation, or any related document and SAP's strategy and possible future developments, products and or platforms directions and functionality are all subject to change and may be changed by SAP at any time for any reason without notice. The information in this presentation is not a commitment, promise or legal obligation to deliver any material, code or functionality. This presentation is provided without a warranty of any kind, either express or implied, including but not limited to, the implied warranties of merchantability, fitness for a particular purpose, or non-infringement. This presentation is for informational purposes and may not be incorporated into a contract. SAP assumes no responsibility for errors or omissions in this presentation, except if such damages were caused by SAP's intentional or gross negligence.

All forward-looking statements are subject to various risks and uncertainties that could cause actual results to differ materially from expectations. Readers are cautioned not to place undue reliance on these forward-looking statements, which speak only as of their dates, and they should not be relied upon in making purchasing decisions.



# SAP ALM Roadshow 2024 - Dubai Edition

## Achieving ALM Excellence for SAP S/4HANA Cloud and Hybrid Customers



**Dana Ibrahim**

Enterprise Customer Success  
Manager

# WELCOME

# TODAY'S Team



**Hakki Bosnali**

VP, Head of Customer  
Engagement & Services



**Mohammed Suhaib**

SAP Cloud ALM Solution  
Expert at SAP Labs India



**Manal Siddiqui**

Delivery Executive & GTM  
SAP Customer Services &  
Delivery (CS&D)



**Mine Ecevit**

Solution Head - Innovation  
Management



# Agenda

<b>09:00 a.m.</b>	<b>Welcome</b> Hosted by Dana Ibrahim, Enterprise Customer Success Manager
<b>09:45 a.m.</b>	<b>Empowering Customers on their SAP S/4HANA Transformation Journeys</b> Hakki Bosnali VP, Head of Customer Engagement & Services
<b>10:00 a.m.</b>	<b>Leveraging SAP ALM for the Intelligent Sustainable Enterprise</b> Mohammed Suhaib, SAP Cloud ALM Solution Expert at SAP Labs India Manal Siddiqui, Delivery Executive & GTM for SAP Customer Services & Delivery (CS&D)
<b>10:45 a.m.</b>	<b>Automation Testing with Tricentis</b> Mohammed Suhaib, SAP Cloud ALM Solution Expert at SAP Labs India
<b>10:55 a.m.</b>	Coffee and Networking break
<b>11:05 a.m.</b>	<b>Optimizing Operations combining AI and SAP Cloud ALM</b> <b>Transitioning from Solution Manager to SAP Cloud ALM</b> <b>Leveraging SAP Focused Run for Advanced monitoring capabilities</b> Mohammed Suhaib, SAP Cloud ALM Solution Expert at SAP Labs India
<b>11:55 a.m.</b>	<b>Helping you achieve more with Cloud Application Services</b> Mine Ecevit, Solution Head - Innovation Management
<b>12:25 p.m.</b>	Questions and Answers
<b>12:40 p.m.</b>	Closing Remarks
<b>12:45 p.m.</b>	Networking Lunch





# Leveraging SAP ALM for the Intelligent Sustainable Enterprise



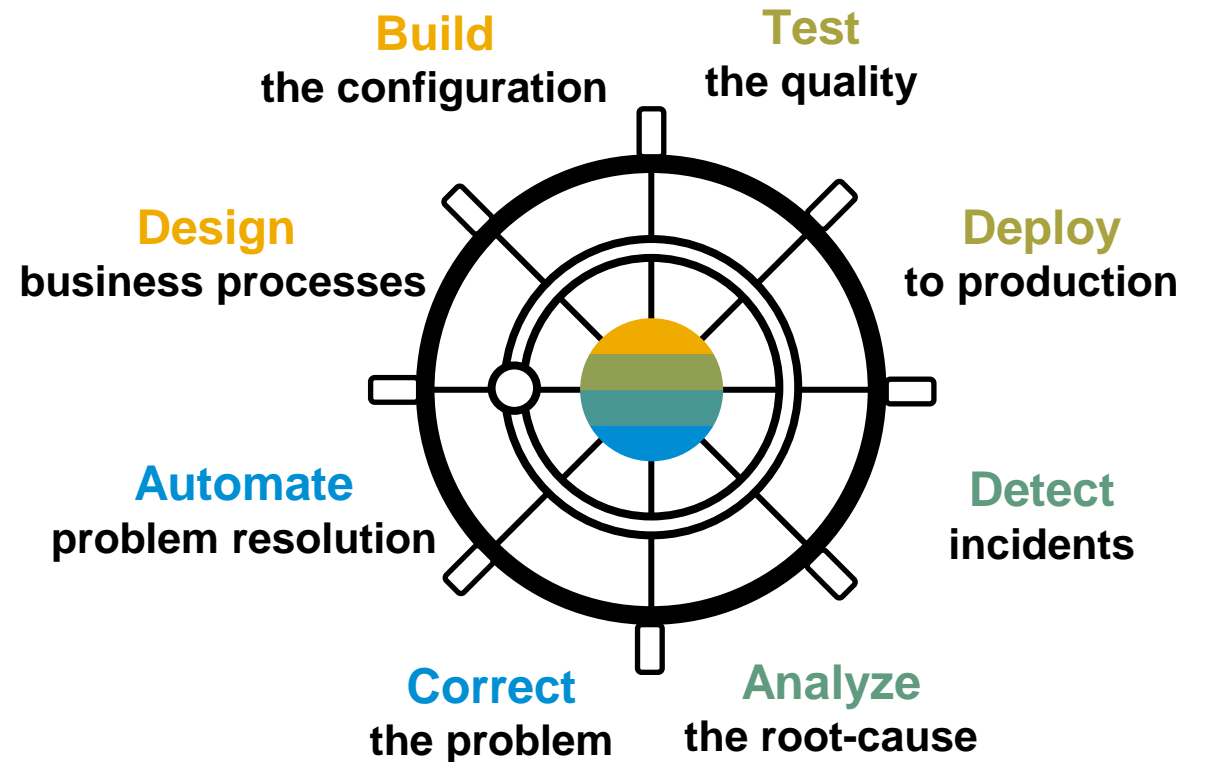
**Manal Siddiqui**

Delivery Executive & GTM  
for SAP Customer Services  
& Delivery (CS&D)

# What is Application Lifecycle Management (ALM)?

Application Lifecycle Management assists the **implementation** and **operations** of **SAP S/4HANA Cloud**

- **Accelerate** time-to-value
- **Safeguard** business continuity
- **Reduce** cost of ownership

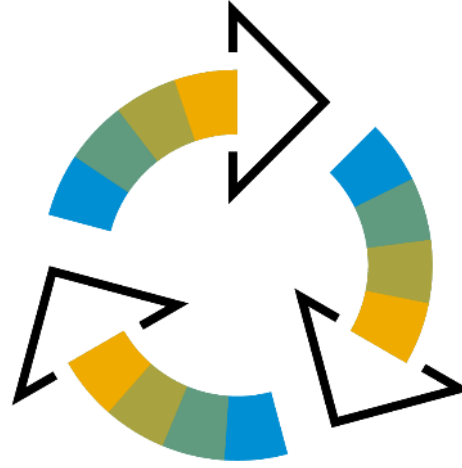


# Why ALM for **RISE with SAP**?



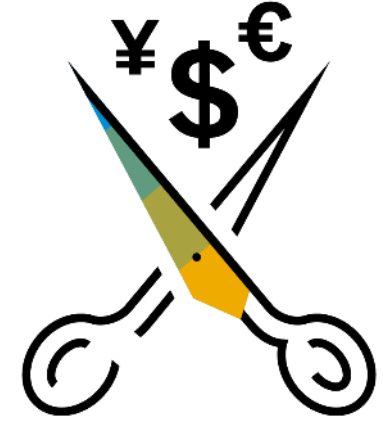
## **Accelerate Time-to-Market**

- Leverage SAP Activate content
- Speed up implementation
- Improve quality by testing
- Ease traceability and governance



## **Safeguard Business Continuity**

- Identify problems
- Accelerate problem resolution
- Automate corrective actions
- Proactive problem detection



## **Reduce Cost of Ownership**

- Lower cost of implementation
- Lower cost of operation
- No maintenance cost
- Avoid 3<sup>rd</sup>-party licenses



# SAP's Application Lifecycle Management product portfolio

## SAP Solution Manager for hybrid solutions



## SAP Focused Run for hybrid solutions

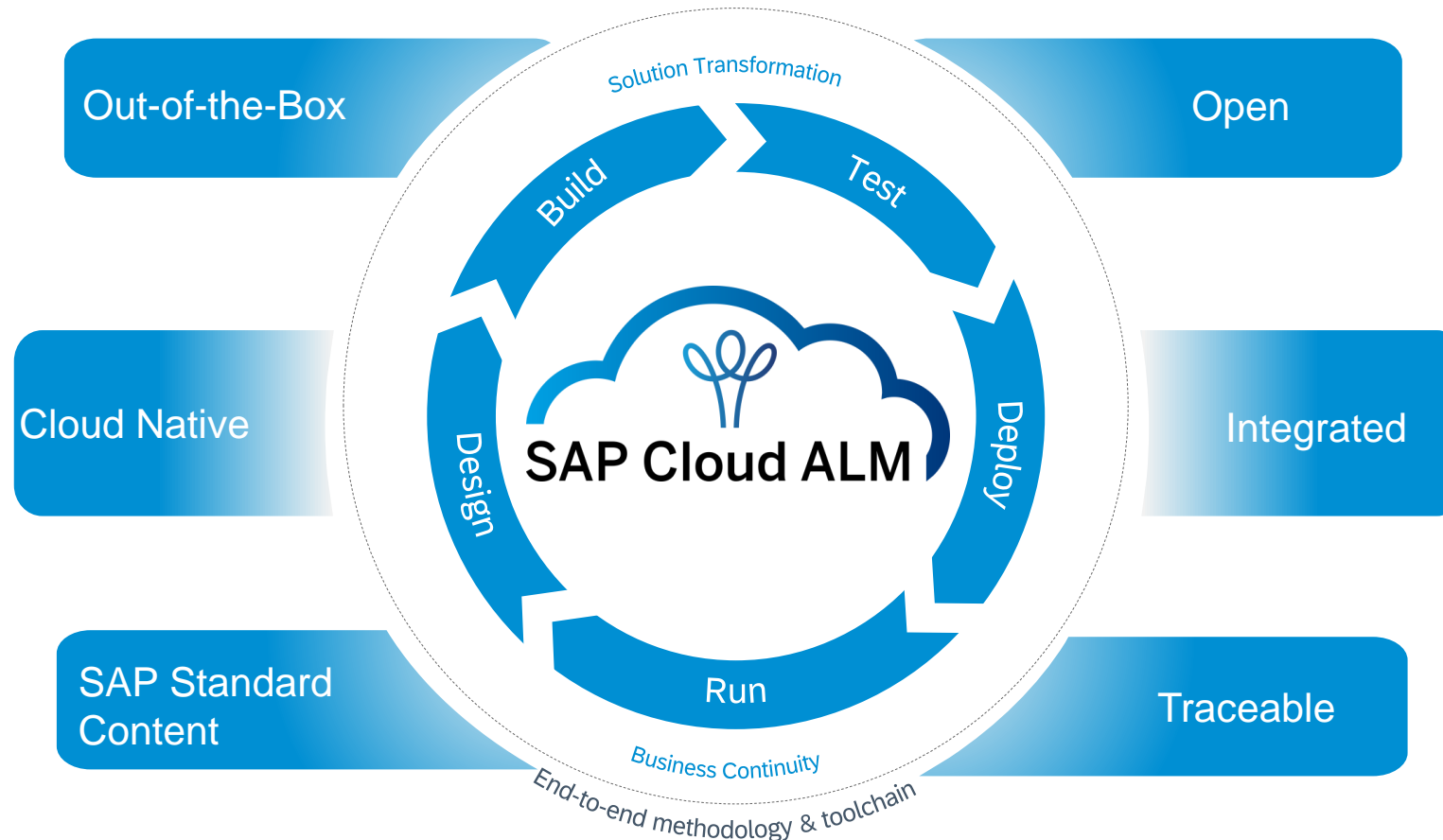


## SAP Cloud ALM for hybrid cloud solutions



**SAP Cloud ALM is the target ALM for RISE with SAP!**

# We manage Your Solution



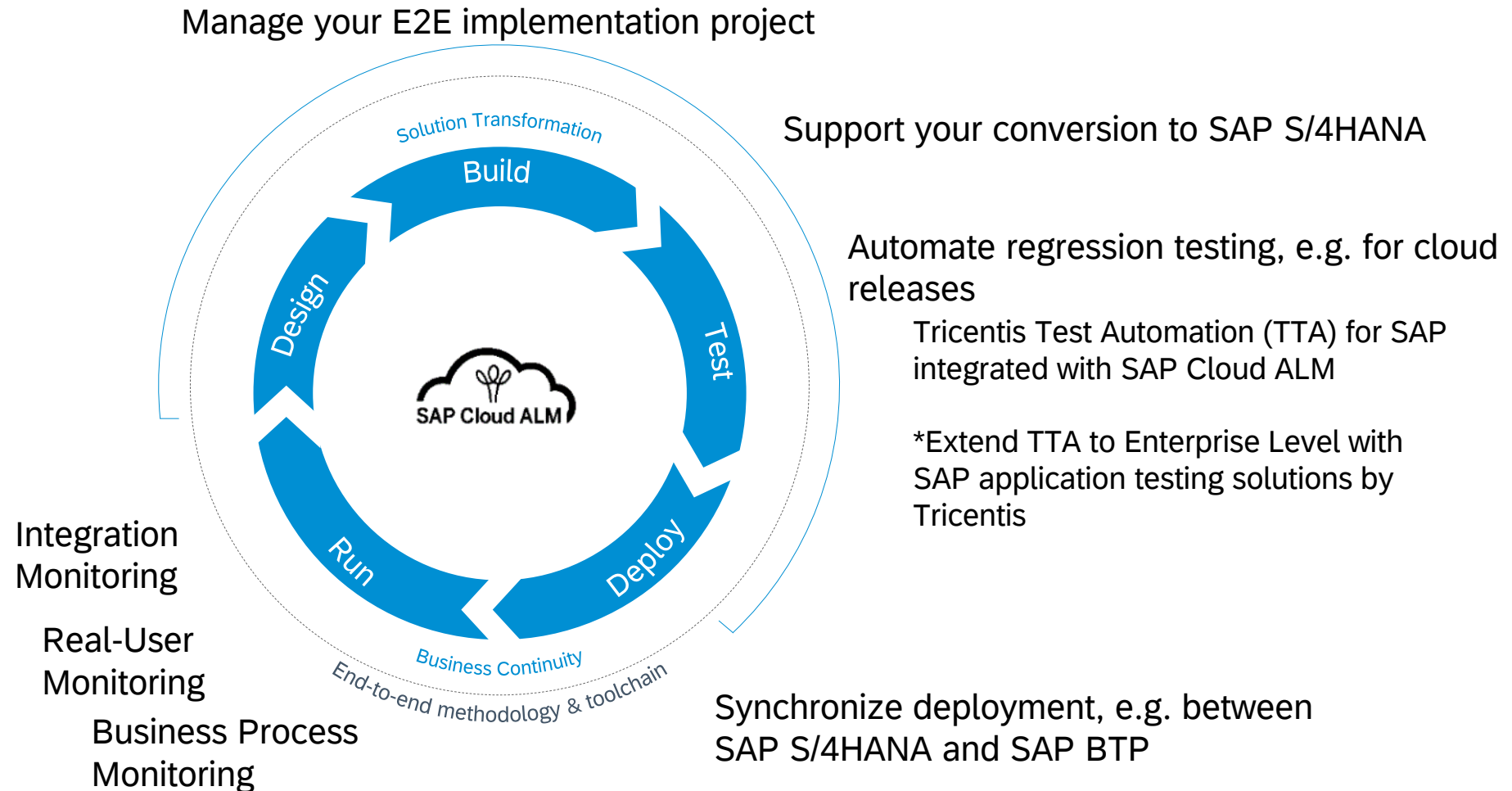
**SAP Cloud ALM provides the harmonized implementation experience for the intelligent enterprise, covering all relevant SAP solutions for all customers**

*powered by AI*  
Service & Support Collaboration  
Data Lake for Service & Support

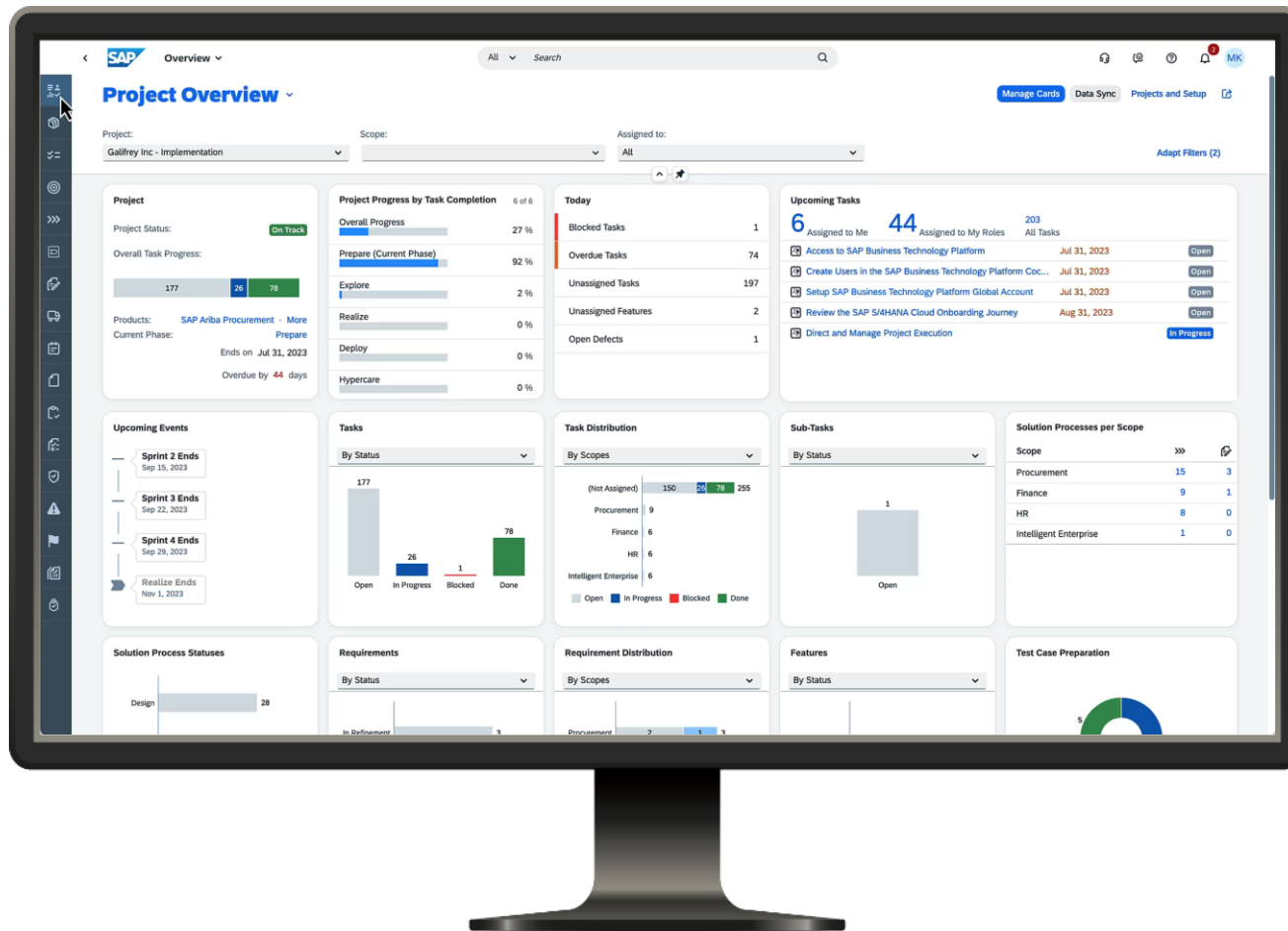
# Typical Entry Points to SAP Cloud ALM – Adoption Use Cases



*Learn  
more!*



# SAP Cloud ALM – Success and Momentum



5.700 customers

8 new customers per day

March 2023

30 months acceleration

First 1.000 customers in 19 months

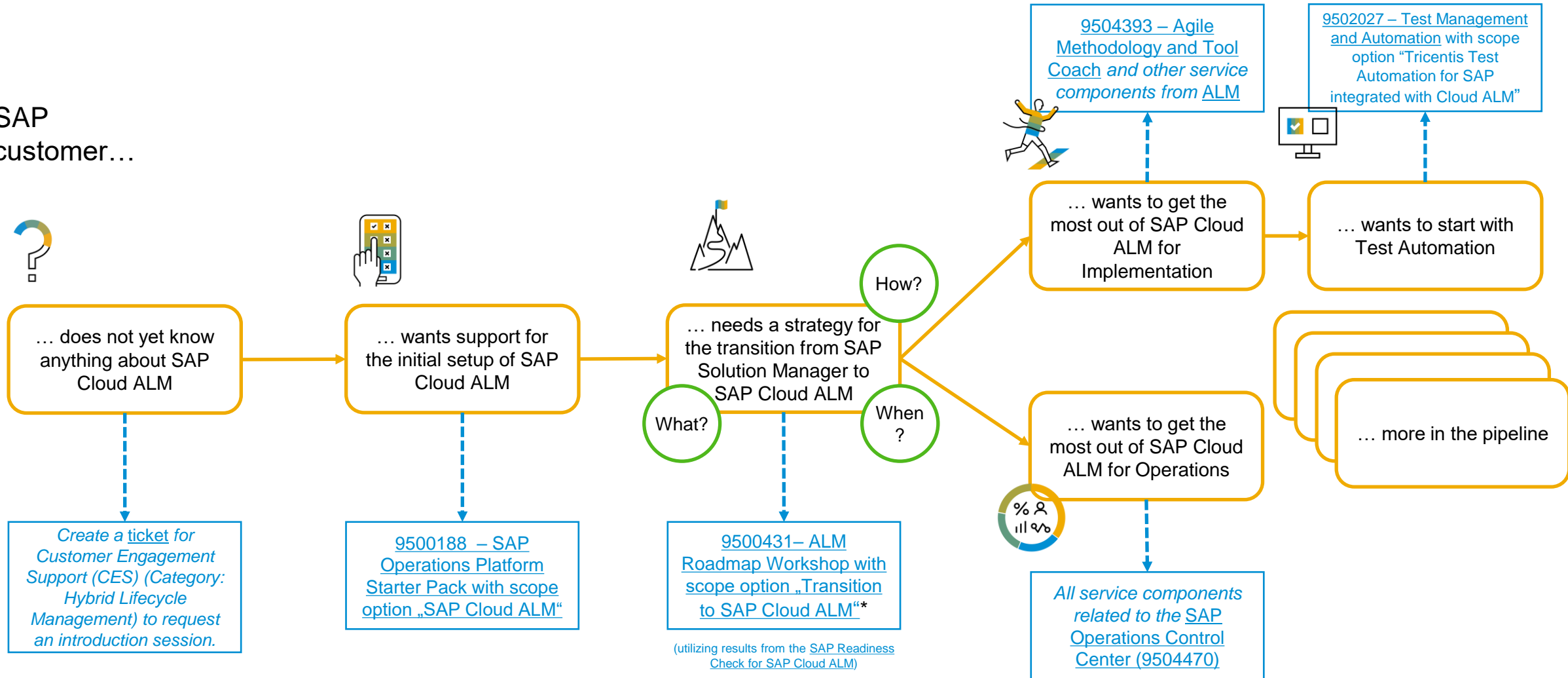
Second 1.000 customers in 7 months

Third 1.000 customers in 4 months

# PE Services | SAP ALM for the Intelligent Enterprise

## Customer Journey

SAP  
customer...





# PE Services | SAP ALM for the Intelligent Enterprise

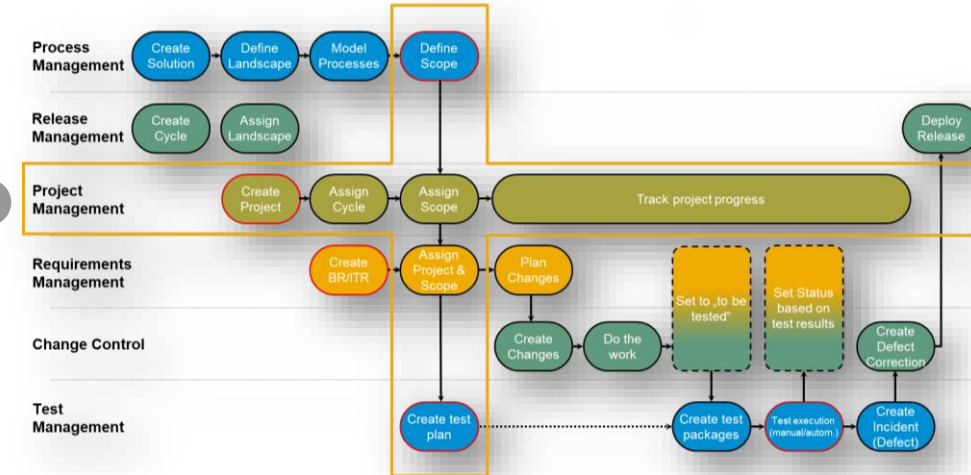
## ALM Roadmap

### Value and Benefits

- Clear concept on how to use SAP Cloud ALM situations and how to facilitate ALM processes
- Optimized value of using SAP's operations platform for ALM with awareness of requirements, possibilities, best practices, synergy effects, and integration aspects

### Outcome

- Assessment of customer's ALM processes and mapping to SAP ALM best practices
- Identification of integration and substitution opportunities of third-party and legacy systems
- Identification of technical feasibility, issues, and areas of concern
- Road map proposal



# PE Services | Business Process Insights and Improvement

## Signavio Process Management & Mining Advisory

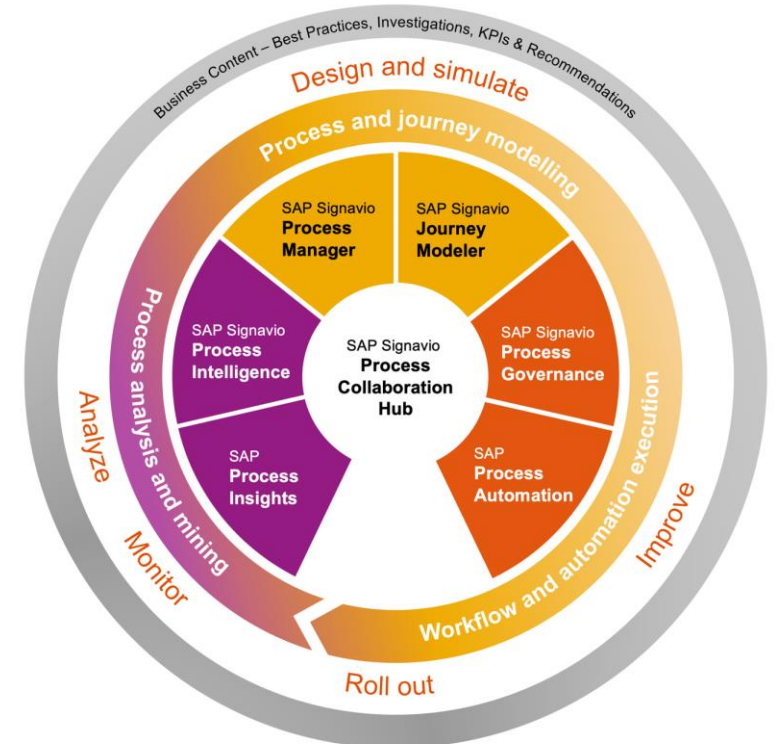
### Value and Benefits

- Integrated 360 degree view on business process(es) and build a solid foundation for the organization's process journey
- Mine, model, analyze, and optimize your processes
- Data-driven approach for process transformation to support business goals

### Outcome

- Technical **support** to prepare for the **configuration** activities:
  - SAP Process Manager by Signavio for **process modelling** and **simulation** selected business process
  - SAP Process Intelligence by Signavio for **mining pilot** process
  - SAP Workflow Accelerator by Signavio to improve the business process by **automating** manual or repetitive tasks
- **Empowerment** on key capabilities of Signavio components

### SAP Signavio Process Transformation Suite



# SAP's Application Lifecycle Management (ALM) strategy

## SAP Cloud ALM

- enables customers to **adopt innovation** at scale.
- helps to keep the business running by protecting **business continuity**.
- serves as anchor point and accelerator for customer **transformations**.
- is included in **maintenance** and **subscription**.

## SAP Focused Run

- empowers SAP-centric service providers to streamline operations across customers.
- enables large customers with extensive on-premise landscapes to run at their best.
- requires an own license.

**SAP Cloud ALM** integrates seamlessly with **SAP Focused Run**.

SAP Solution Manager 7.2 **mainstream maintenance** ends Dec. 31, 2027.





# **Manage** Implementations with SAP Cloud ALM



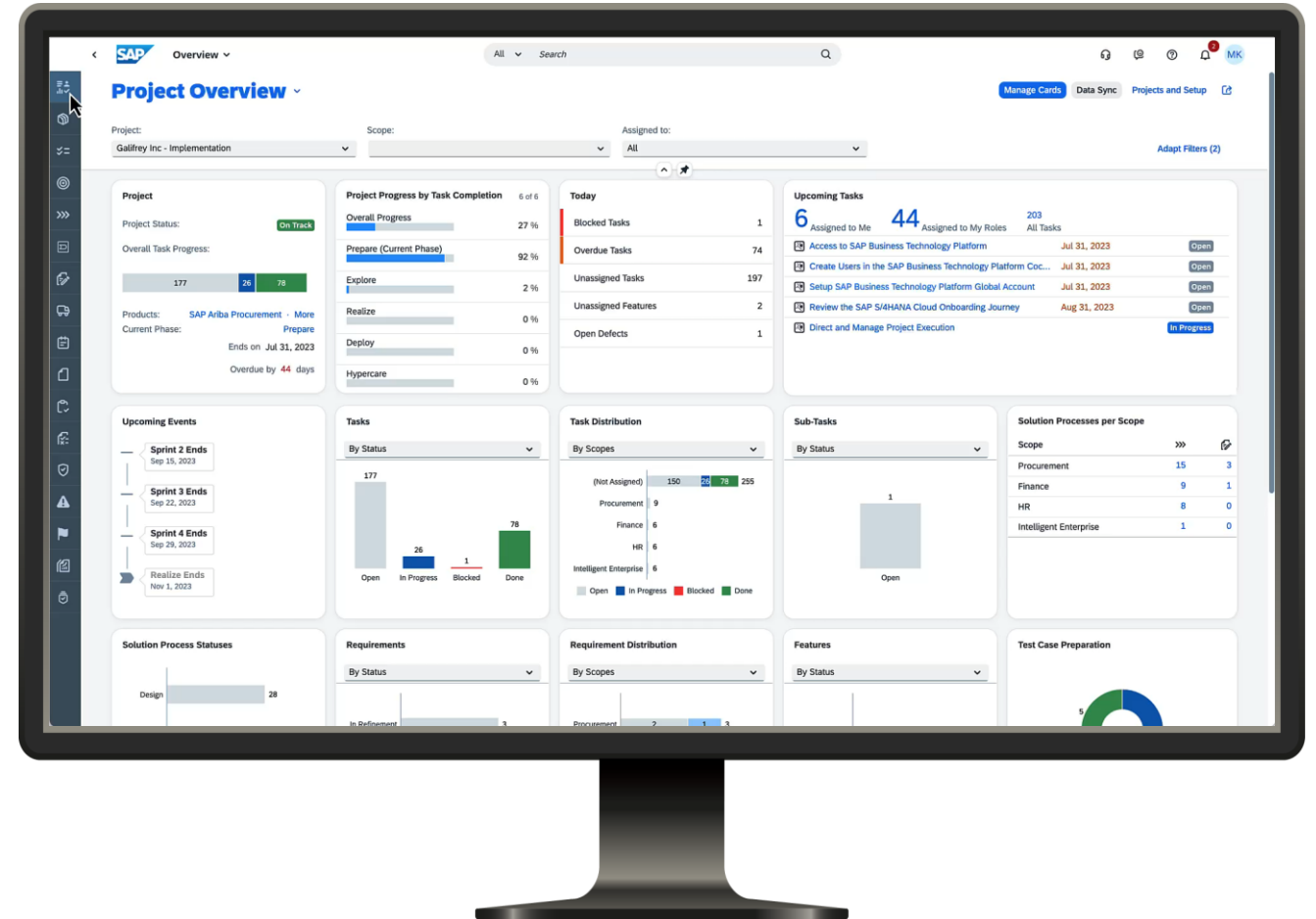
**Mohammed Suhaib**

SAP Cloud ALM Solution  
Expert at SAP Labs India

# SAP Cloud ALM for implementation

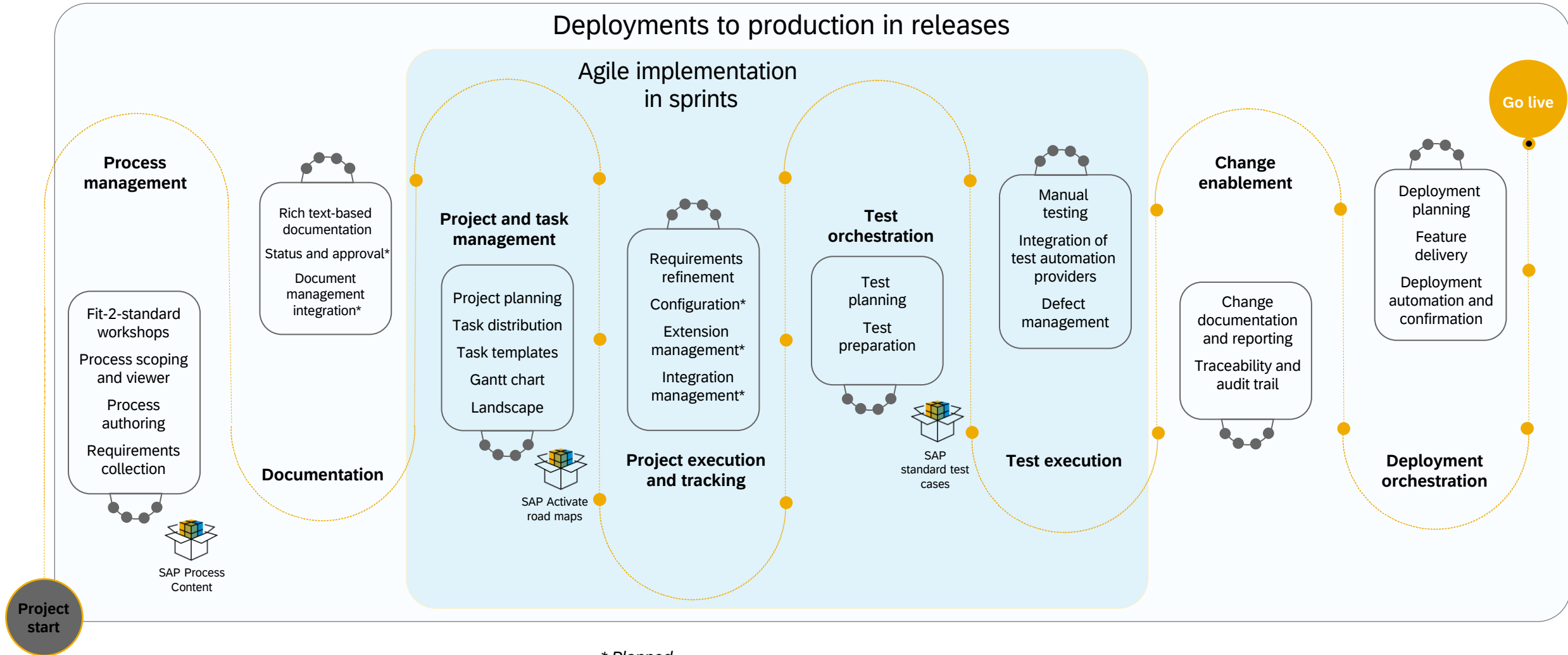
SAP Cloud ALM for implementation provides the harmonized implementation for the intelligent enterprise, covering all relevant SAP solutions for cloud centric customers

- **Harmonized implementation** across SAP cloud solutions
- **Built-in transparency** about implementation progress
- **Faster time-to-value** through task-driven implementation based on SAP Activate
- **Comprehensive** workspace for fit-to-standard workshops with SAP Standard and custom content
- **Ensuring quality** in projects with integrated manual and automatic testing
- **Full audit trail and traceability** with integrated deployment orchestration
- **Instantaneously** available





# Implementation capabilities in detail



\* Planned

**Demo**





## Customer Case: Jira & SAP Cloud ALM Best-of-Breed-Approach



Federal Ministry  
of Research

# Problem Statement of High-Tech Customer

1

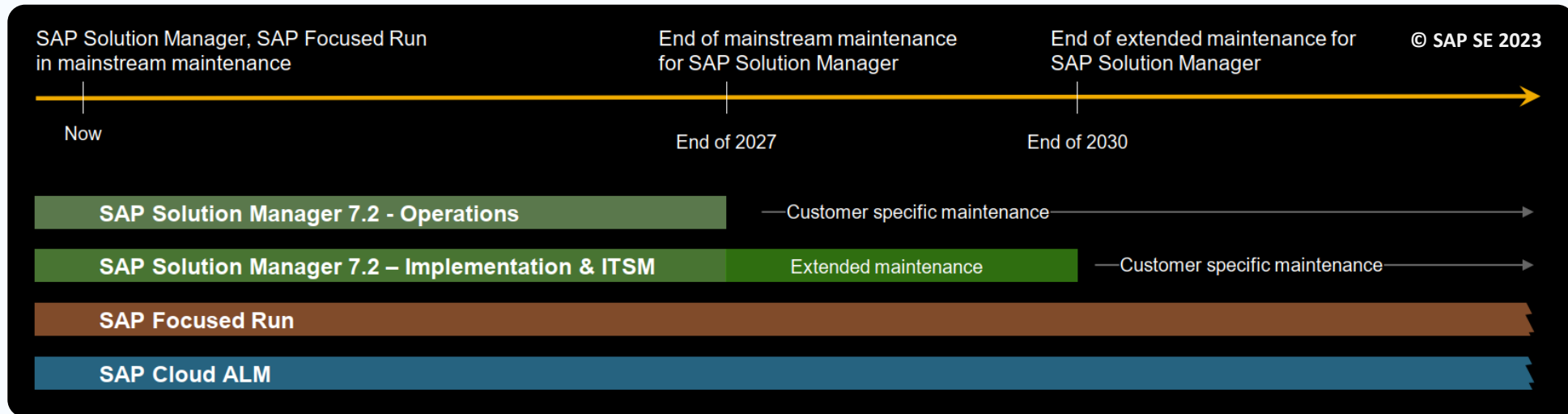
S/4HANA Implementation with  
3-year program cycle

2

SAP Cloud ALM new de-facto  
standard but best-practices by  
Porsche Consulting  
(=Jira Template)

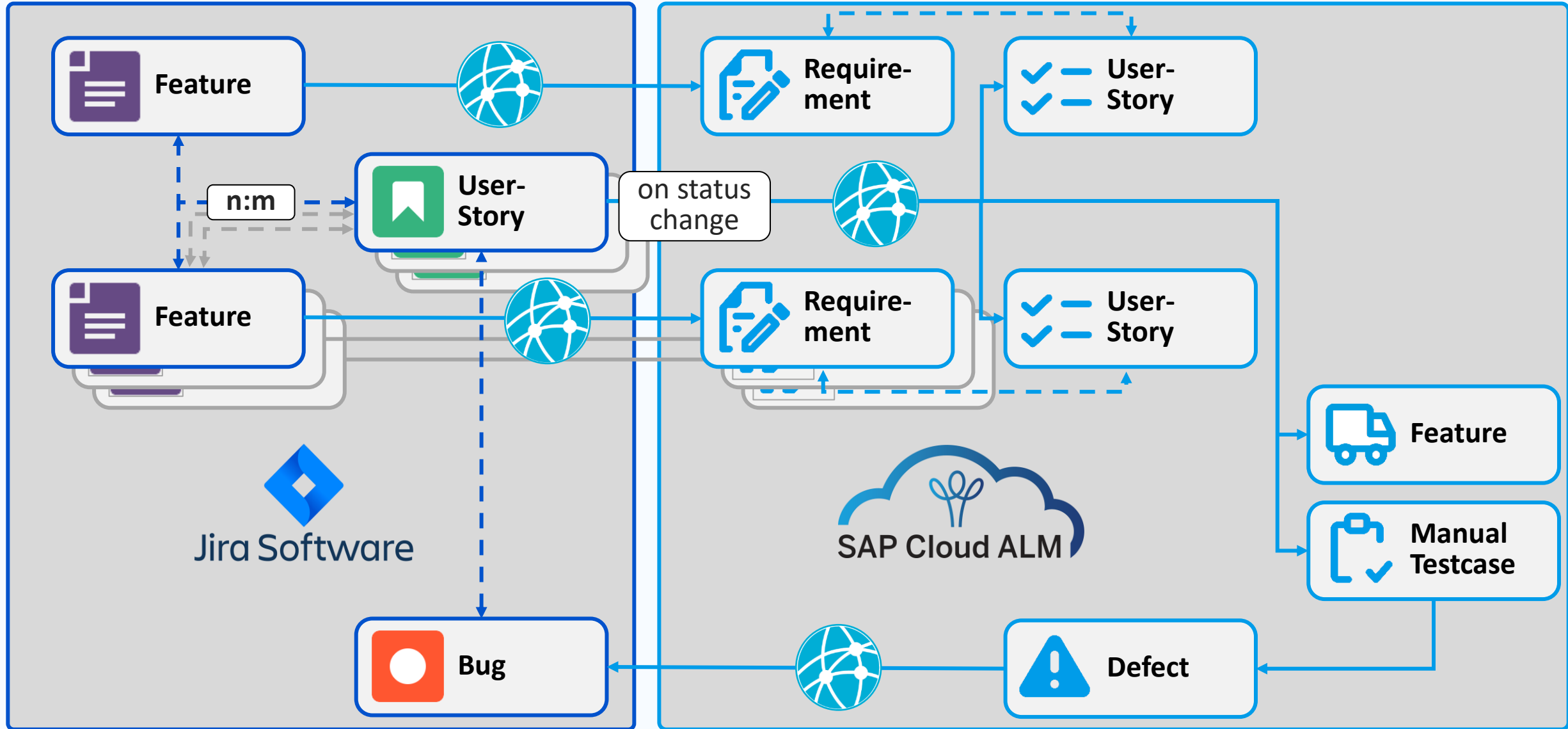
3

SAP Solution Manager  
Product Availability



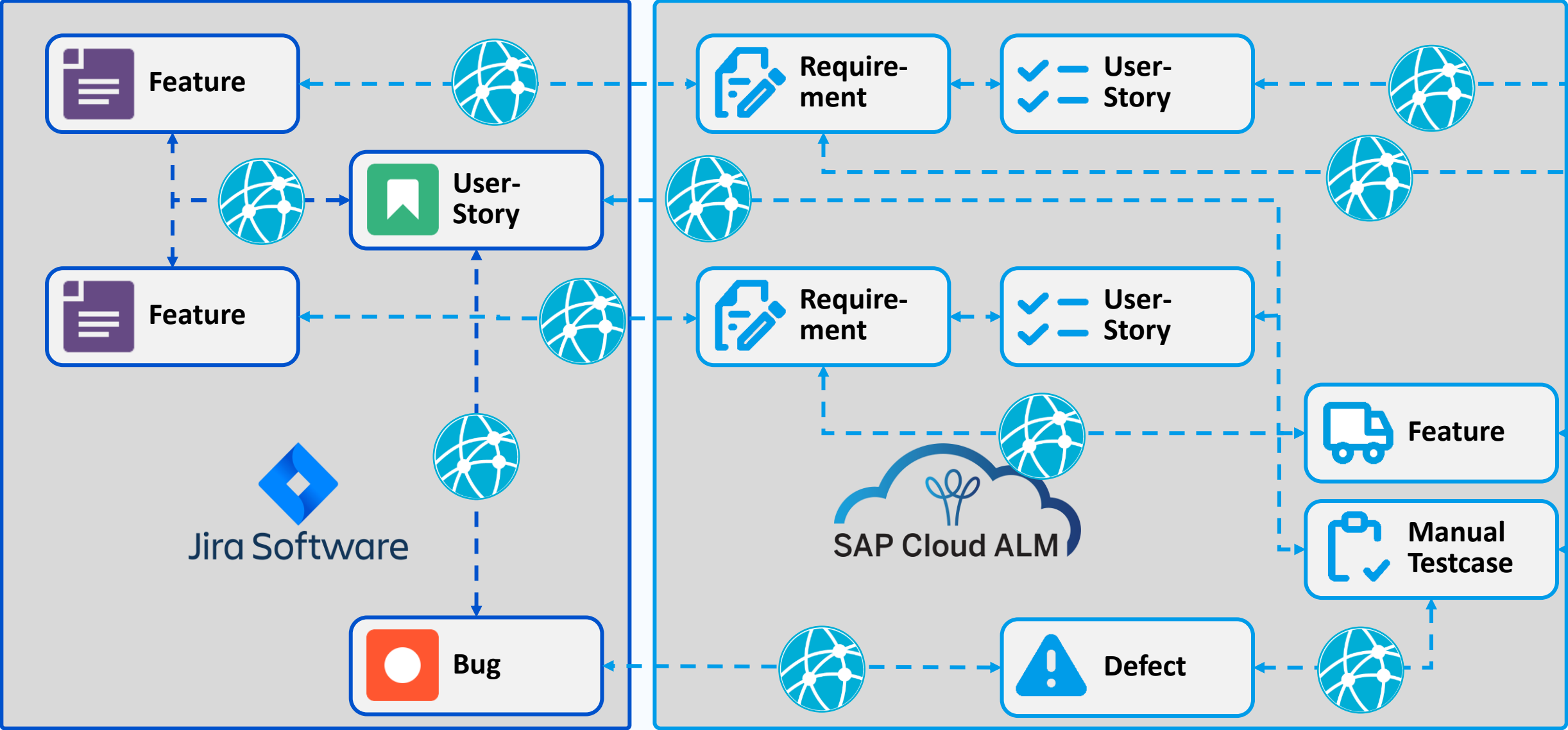
## What SAP ALM Tool Set?

# Flow on conceptual Basis





# Logical Links and Demo Setup



# Enjoy.

**CONIGMA™**  
**CONNECT**

**SAP** Requirements ▾

**Open Requirements** ▾

Search

Project: RosHANA ▾

Priority: ▾

Approval: ▾

Team: ▾

Responsible: ▾

Requirement Status: Blocked x 4 More ▾

Workstream: ▾

Solution Process: ▾

Adapt Filters (5)

### Demo 17th April 2024 (JIRA: RHANADEV-137)

Requirement

Responsible: — ▾

Timebox: Prepare

Planned Completion: Dec 29, 2023

Approval ▾ Requirement Status In Refinement ▾ Priority Medium ▾

Process Hierarchy

Items (2) Create ▾ Mass Edit Delete ⬆ ⬇ ⚙ ⋮

Title	Status	Relation
O2C-02-01 - Quotation Management Ramp-up (JIRA: RHANADEV-132) 3-1986	In Realization	

Approval: ▾

Requirement Status: In Realization ▾

Priority: ▭ ▾

Solution Process:

### User Stories (0)

Title	Status	Relation
No user stories assigned		

### Project Tasks (0)

Title	Status	Relation
No project tasks assigned		

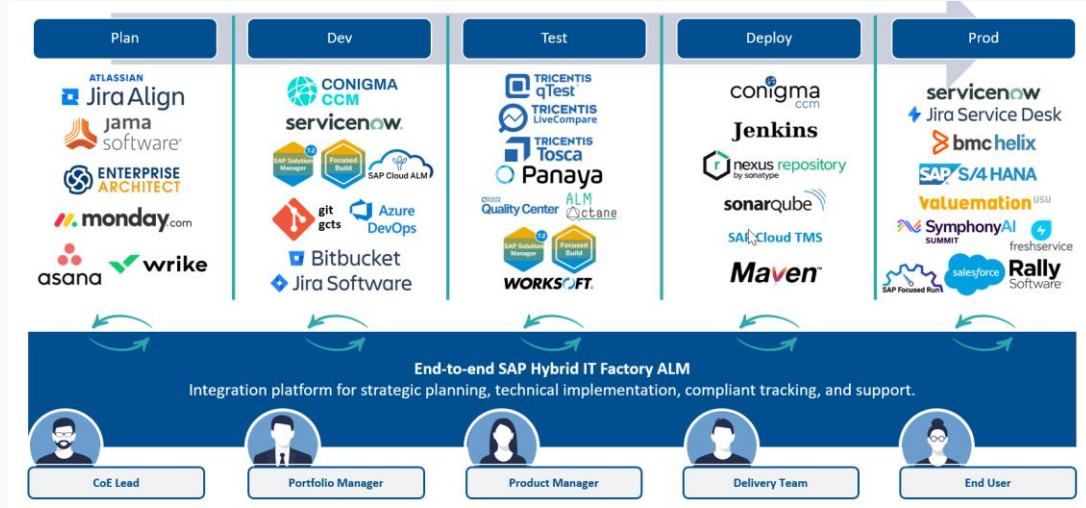
### Features (0)

Title	Status

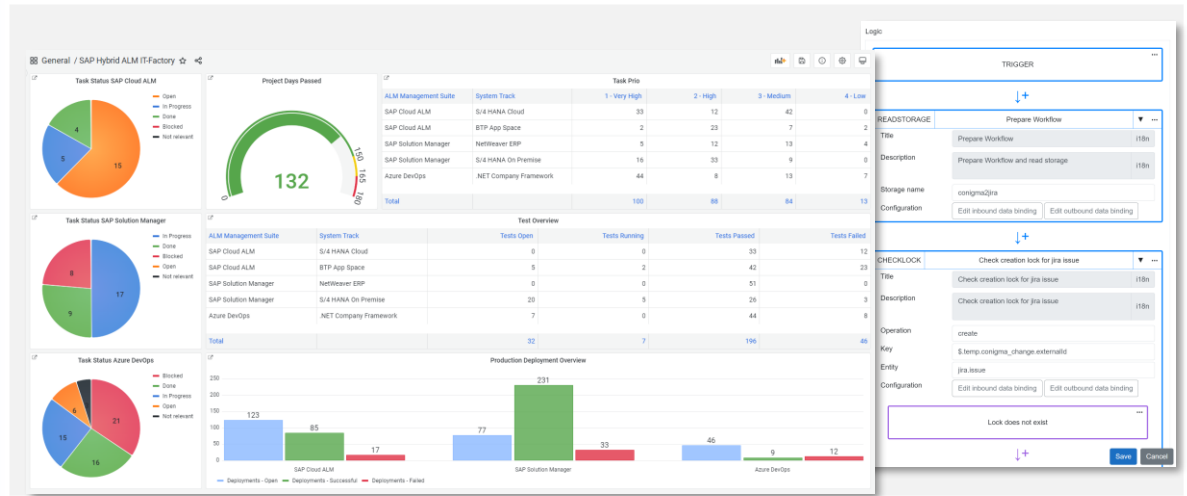
## THE Next Generation iPaaS

# Productized Integrations with Conigma™ Connect

## SAP Hybrid ALM IT Factory Integrations at your Fingertips

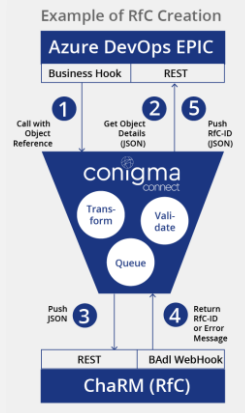


## No Code Customizing – Comprehensive Overview



## Customer Benefits for Implementation and Operation

- Industrialize Your SAP Software Implementation and Operation Processes
- Enjoy Integration Process Automation and Integration Intelligence
- Create Your SAP Hybrid ALM Tool Chain without Limitation
- Dive into a Comprehensive Overview with Real-time Audit Compliance



# CONIGMA™ CONNECT

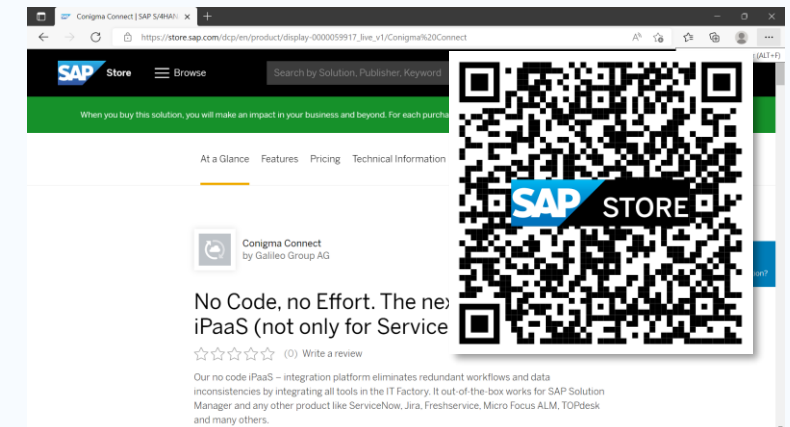
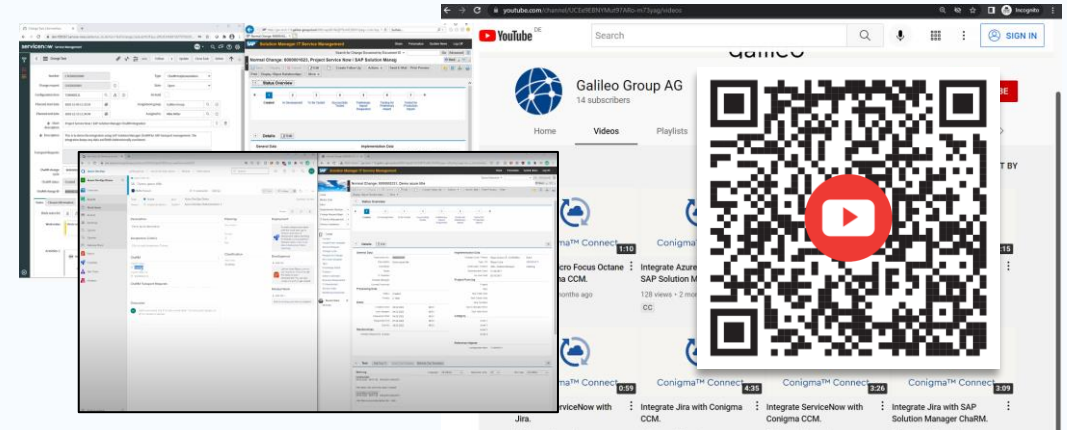
# Meet the Experts Today

Or follow us



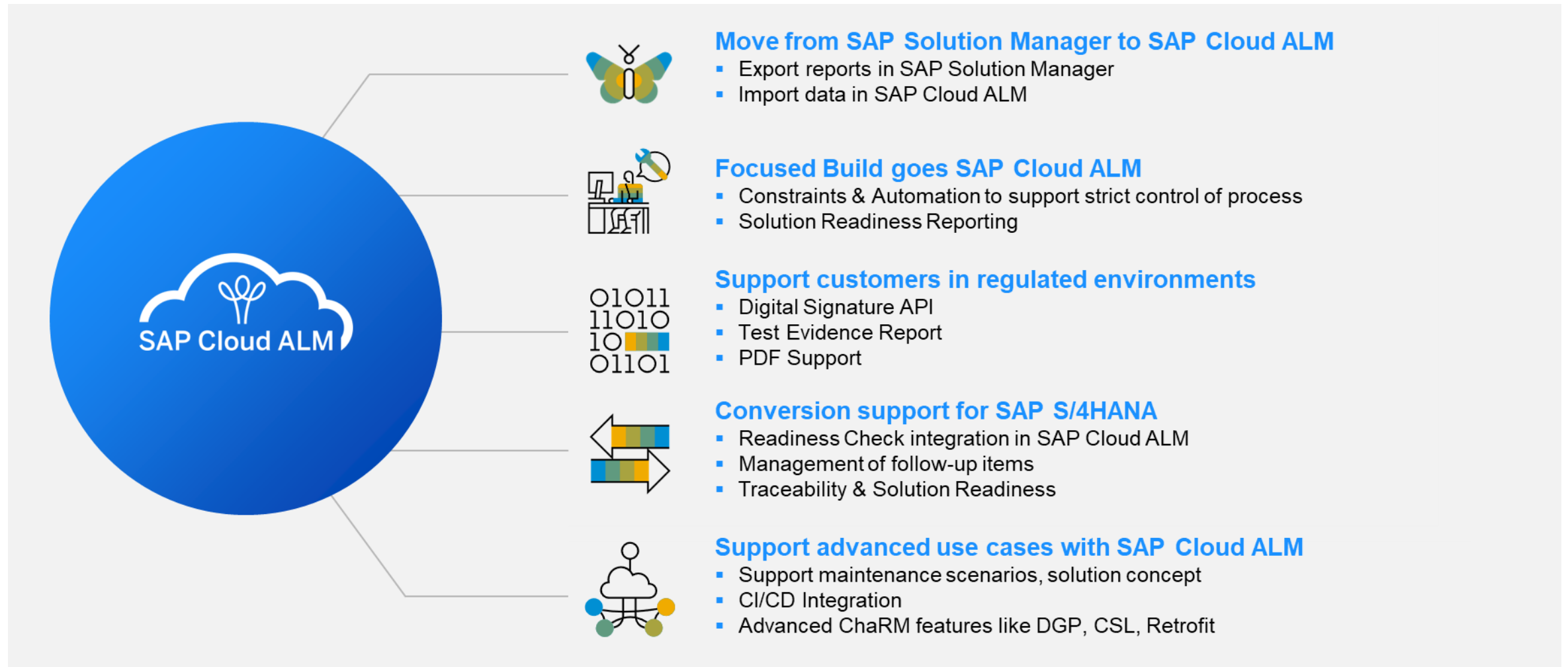
No code. No effort.

Take our word for it.



# What's coming up?

## SAP Cloud ALM for implementation roadmap







# Automation testing with Tricentis



**Mohammed Suhaib**

SAP Cloud ALM Solution  
Expert at SAP Labs India

# Application Lifecycle Management and Test Automation Worlds



## **Application Lifecycle Management** **Well recognized best of suite solution**

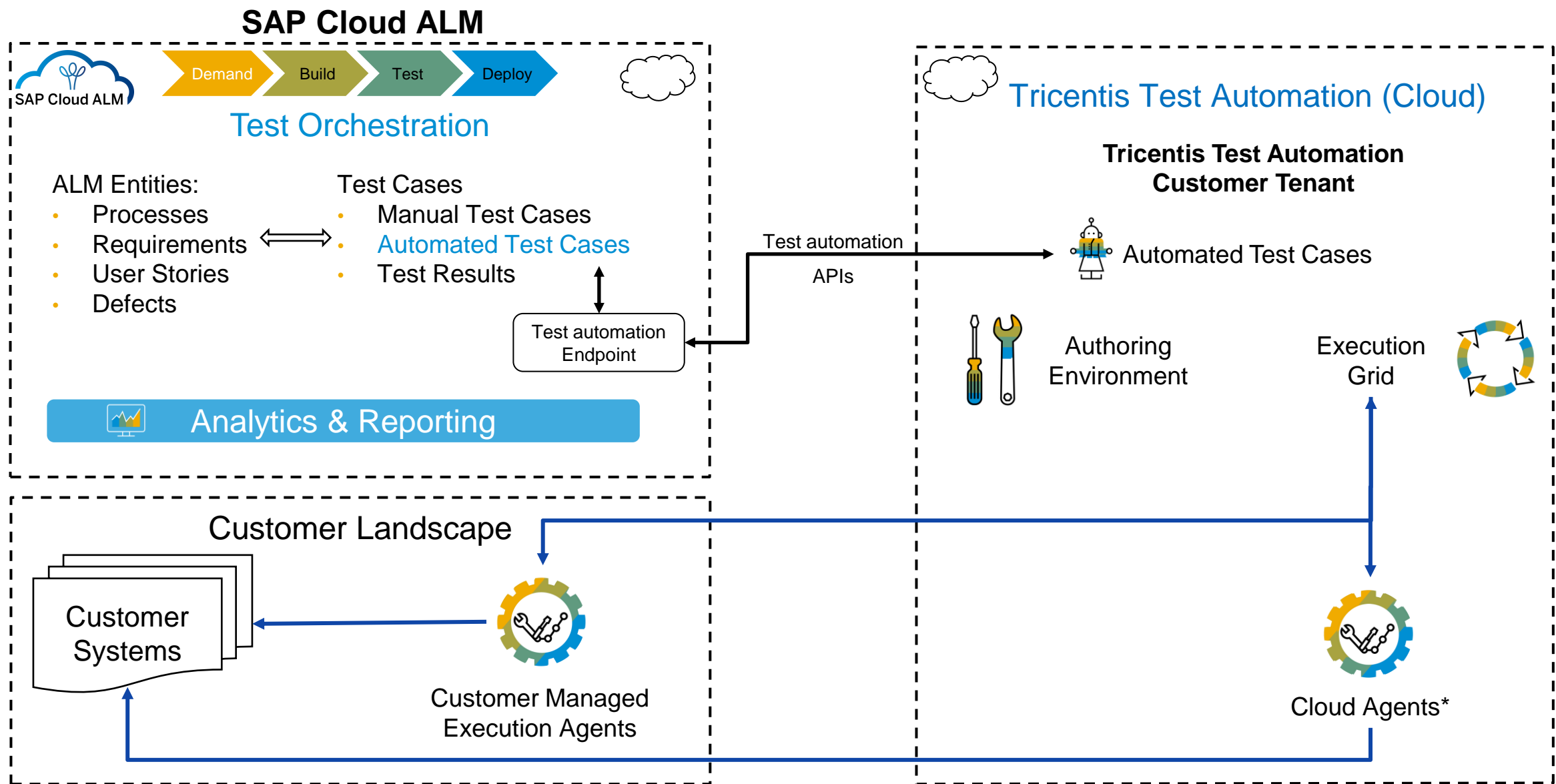
- Project Management
- Process Management
- Test Management
- Document Management
- Change and Deployment Management



## **Test Automation** **Recognized by analysts**

- Model based testing
- Scalable Distributed Execution
- Dynamic Test Data management
- Strong integration capabilities

# Test Automation with SAP Cloud ALM and Tricentis

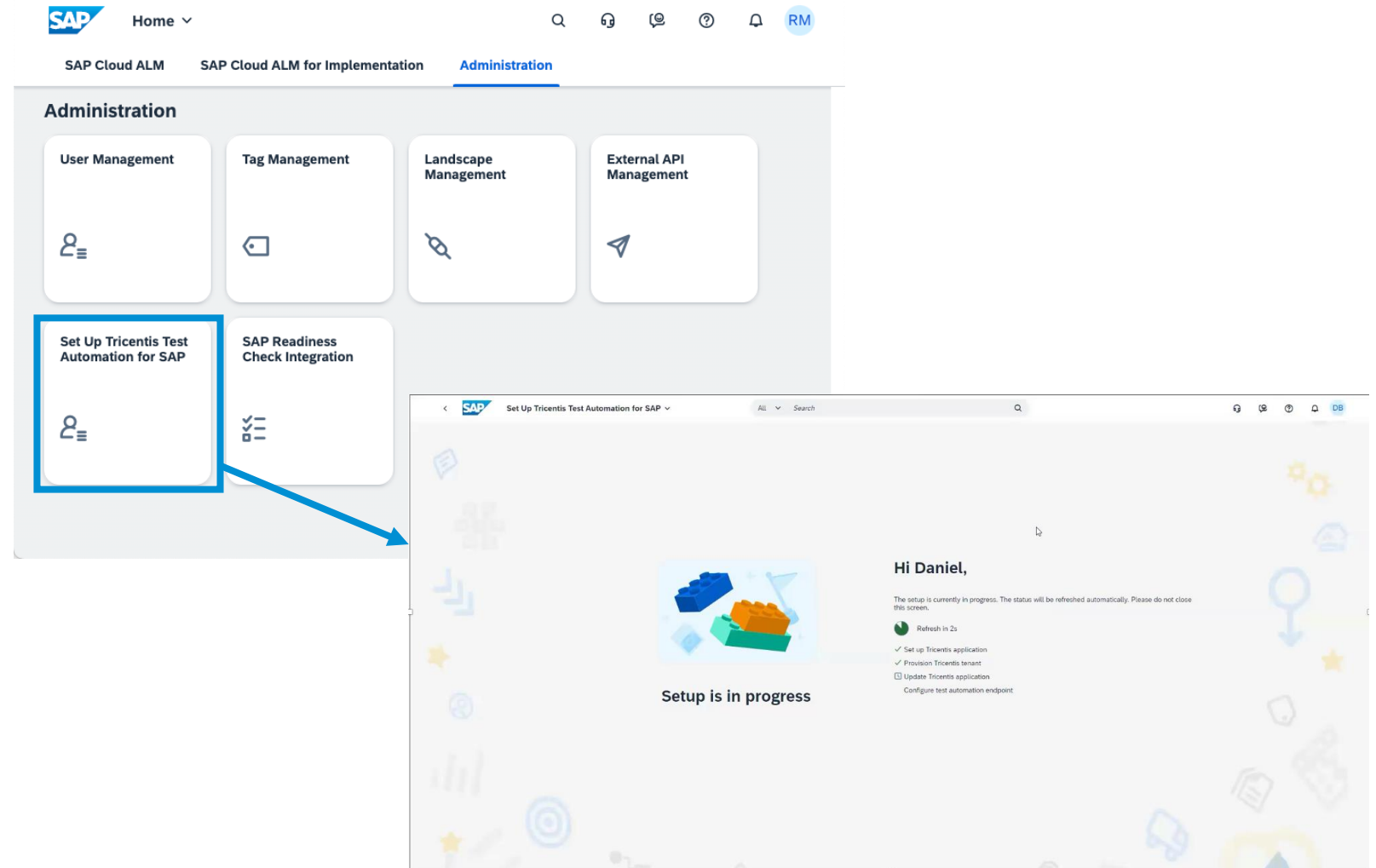


# Onboarding via the Integration

## Automated Provisioning

- Tenant creation
- User creation
- Single sign on set up based on the data from SAP Cloud ALM

In <3 minutes!



# Functionality Overview Summary

Capability	Tricentis Test Automation integrated with SAP Cloud ALM (OEM)	SAP Test Automation by Tricentis (Solution Extension)
Test automation for SAP (browser-based apps)	✓	✓
Test automation for SAP APIs	✓ *	✓ *
Test automation for SAP GUI	✓ *	✓ *
Test automation for non-SAP Web	✗	✓
Non-SAP APIs and Desktop	✗ *	✓ *
Test automation for mobile	✗ *	✓ *
Simulations	✗ *	✓ *
Named Users	5	10 (initially, more can be purchased)
Test runs	Tests: 500 per calendar month	Unlimited
Storage	2,5 GBs	Unlimited
Customer managed agents	5	10 (initially, more can be purchased)



- **Optimizing** Operations combining AI and SAP Cloud ALM
- **Transitioning** from Solution Manager to SAP Cloud ALM
- Leveraging SAP Focused **Run** for Advanced monitoring capabilities



**Mohammed Suhaib**

SAP Cloud ALM Solution  
Expert at SAP Labs India



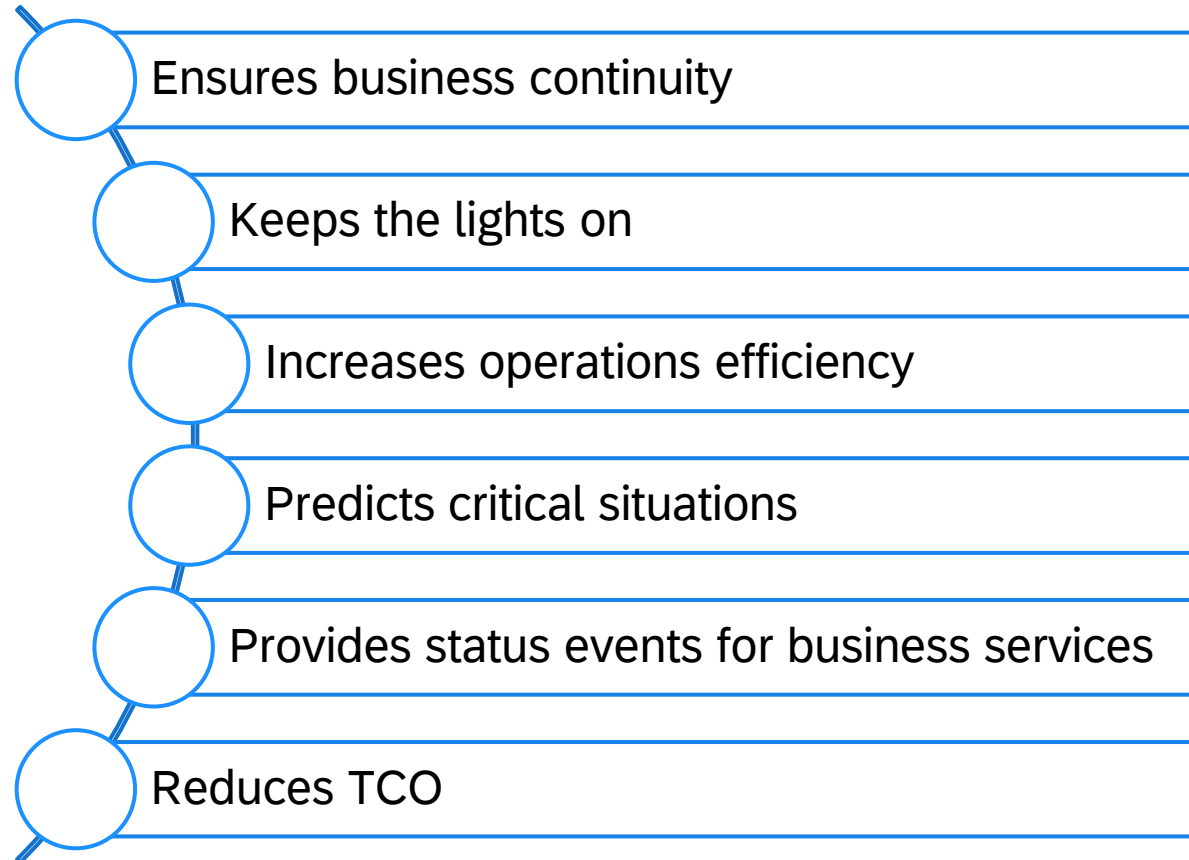
# ALM Solutions by SAP

## Different Operations Platforms for Different Target Groups

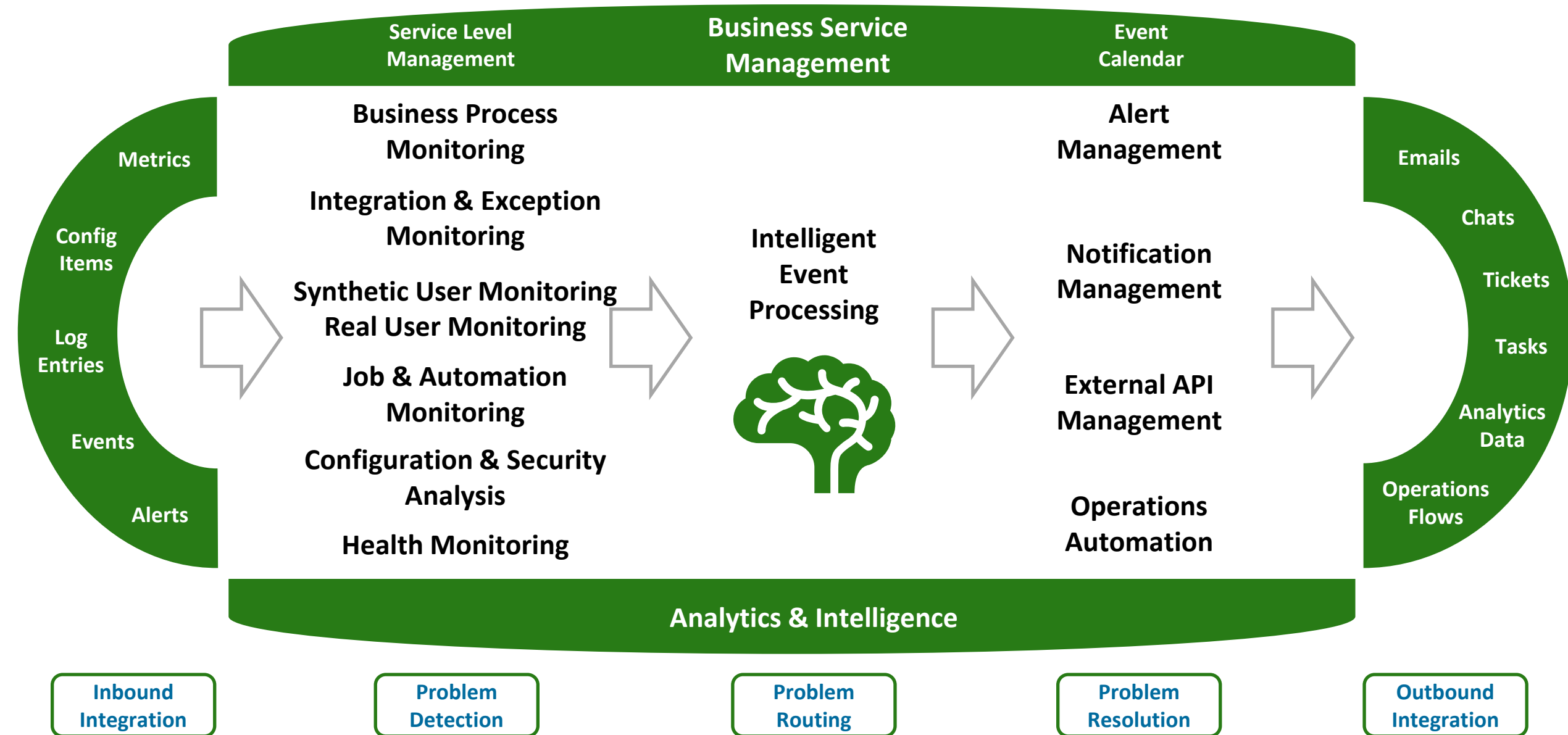


For Operations

**Around 25 million  
event actions  
processed per  
month**



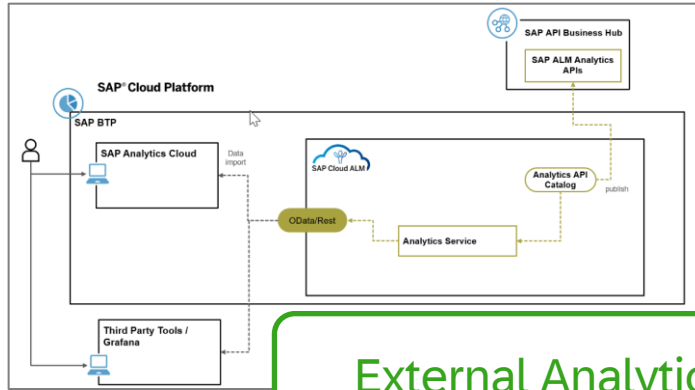
# SAP Cloud ALM for Operations – Functional Overview



**Demo**

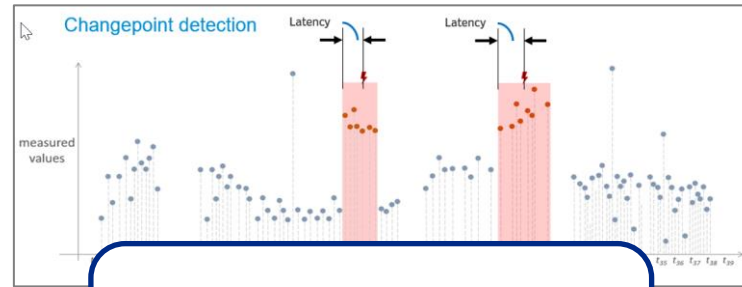
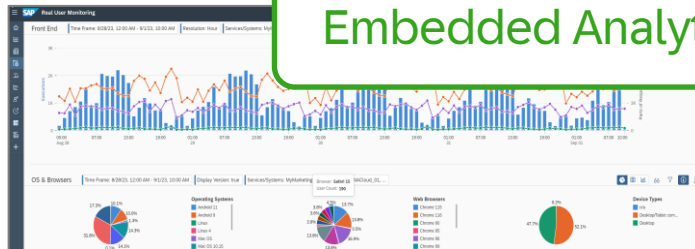


# Analytics & Intelligence



External Analytics

Embedded Analytics

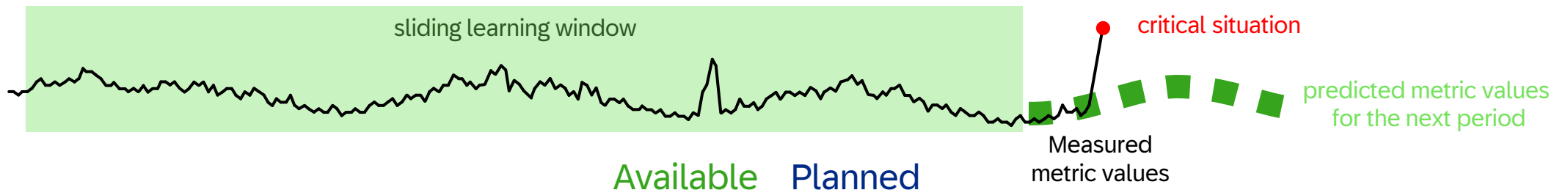
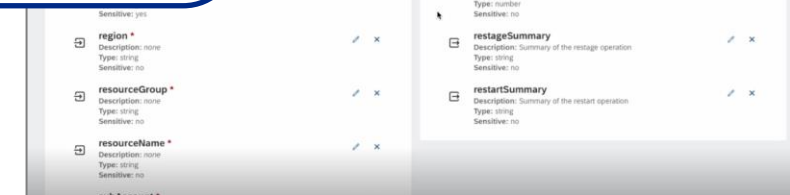
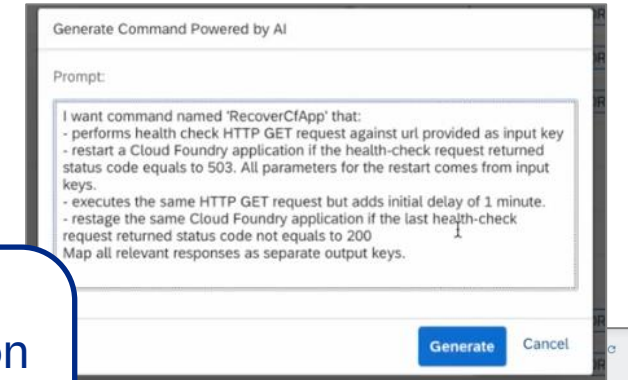


Changepoint Detection  
in Real User Monitoring



Dynamic Thresholding  
in Synthetic User  
Monitoring

SAP  
Automation  
Pilot scripts  
generated  
by GenAI



# SAP Cloud ALM for Operations – Content Roadmap

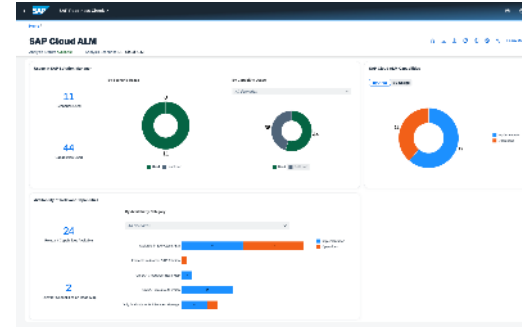
	Currently Available			Planned
Business Process Monitoring	SAP S/4HANA Cloud (Public/Private) SAP S/4HANA & SAP Business Suite	SAP SuccessFactors SAP Cloud for Customer	SAP Entitlement Management	SAP Ariba plus enhancements for S/4HANA, SAP Business Suite and SAP SuccessFactors HXM Suite
Integration & Exception Monitoring	SAP S/4HANA Cloud (Public/Private) SAP S/4HANA & SAP Business Suite SAP Marketing Cloud, SAP Cloud for Customer and SAP Order Management SAP Business By Design SAP Integrated Business Planning SAP Digital Vehicle Hub SAP SuccessFactors SAP Consumers Industry Cloud SAP Ariba, Concur and Fieldglass	SAP Intelligent Asset Management SAP Field Service Management SAP Life Sciences Cloud SAP Omnichannel Promotion Pricing SAP Business Network for Logistics SAP Subscription Billing SAP Cloud for Projects SAP Predictive Replenishment SAP Cell Gene Therapy Orchestration SAP Int. Product Recommendations	SAP Entitlement Management SAP Process Integration (Java) SAP Integration Suite (CI) SAP MDI and SAP Event Broker SAP Mobile Services SAP Data Intelligence SAP Analytics Cloud SAP BTP NEO/ABAP PaaS SAP BTP CF PaaS (Java)	SAP Digital Manufacturing Cloud SAP Variant Configuration and Pricing SAP Order and Delivery Scheduling SAP Intelligent Returns Management SAP Task Center SAP BTP CF/Kyma PaaS (node.js) SAP Integration Suite - Edge Integration Cell, Event Mesh, Advanced Event Mesh
User & Performance Monitoring	SAP S/4HANA Cloud (Public/Private) SAP S/4HANA & SAP Business Suite SAP Cloud for Customer SAP Marketing Cloud	SAP Integrated Business Planning SAP SuccessFactors EC Payroll SAP Data Quality Management	SAP BTP ABAP PaaS SAP BTP NEO PaaS SAP BTP CF/Kyma PaaS (Java, node.js)	SAP Analytics Cloud SAP Workzone Service
Job & Automation Monitoring	SAP S/4HANA Cloud (Public/Private) SAP S/4HANA & SAP Business Suite SAP Marketing Cloud SAP Integrated Business Planning	SAP SuccessFactors EC Payroll SAP Business Warehouse SAP Business Workflow (ABAP) SAP BTP ABAP PaaS	SAP Intelligent RPA SAP Build PA (Jobs) SAP BTP CF/Kyma PaaS (Java, node.js)	SAP Build PA (Processes) SAP Data Privacy Management SAP DataSphere SAP Analytics Cloud
Configuration & Security Analysis	SAP S/4HANA SAP S/4HANA Private Cloud Edition SAP Business Suite	SAP BTP, Credential Store SAP BTP, Identity Authentication		SAP HANA Cloud SAP BTP, Mobile Service SAP BTP, Destination Service
Health Monitoring	SAP S/4HANA Cloud (Public/Private) SAP S/4HANA & SAP Business Suite SAP Marketing Cloud SAP Integrated Business Planning	SAP SuccessFactors EC Payroll SAP Intelligent RPA SAP Integration Suite (CI, APIM) SAP Cloud Connector	SAP BTP ABAP PaaS SAP BTP Neo PaaS SAP BTP CF/Kyma PaaS (Java, node.js) SAP HANA Cloud & BTP Neo DB	SAP Edge Integration Cell SAP Event Broker SAP DataSphere SAP Analytics Cloud



## “



Transition to SAP Cloud ALM for implementation when the available functionality fulfills your needs, or if you plan to implement SAP's cloud solutions within your landscape.



Check for  
ALM  
Implementation Services

Methodology to  
ALM\*

Tools for selected data trans-  
documentation and test cases

Mid 2024

**Use your transition to rethink and simplify your ALM processes.**

This is the current state of planning and may be changed by SAP at any time.  
SAP Solution Manager 7.2 needs to be at least at SPS15 for successful transition.





I need more capabilities in SAP Cloud ALM. “

## SAP Continuous Influence for SAP Cloud ALM

Customers/partners  
submit requests

Community  
ranks via voting

SAP  
reviews and develops



Implementation

Available today!



Operations

# **Transitioning** from Solution Manager to **SAP Cloud ALM**

# From SAP Solution Manager to SAP Cloud ALM

**All SAP Solution Manager customers should plan to move to SAP Cloud ALM.**



Adopt SAP Cloud ALM for service and operations **NOW**

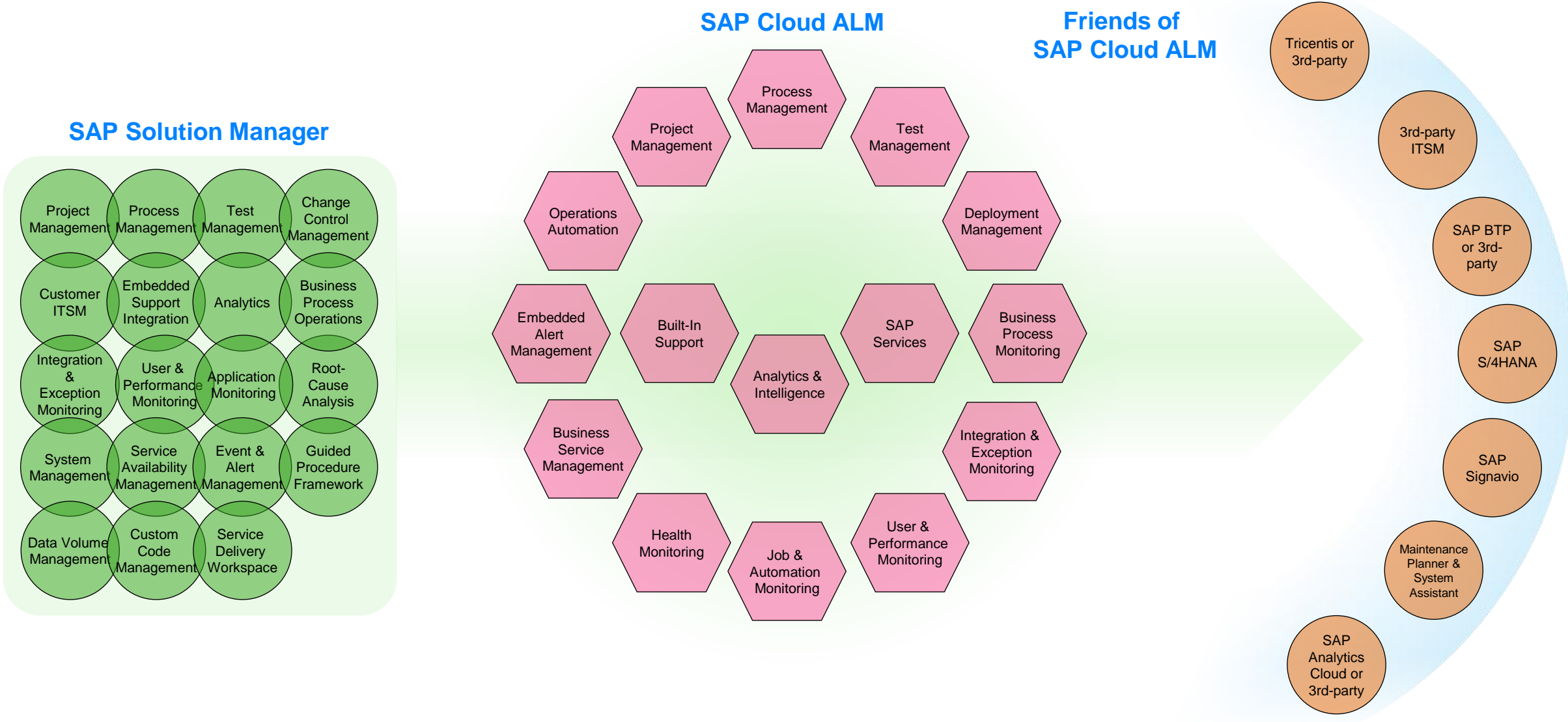
- Less customer effort for updates
- Ease of use and consumption
- Simplified monitoring without agents
- Additional monitoring use cases
- SAP service delivery integrated

Use SAP Cloud ALM for fast-paced cloud implementations **NOW**

Adopt SAP Cloud ALM for implementation **at your own pace**

- Complete your move to SAP S/4HANA
- More functionality for Testing, Deployment Management and Solution Documentation is planned for 2023/24
- Advanced functionality for Deployment Management and Solution Documentation planned for later

# Functionality



# Transition Center in SAP Support Portal

## Your one-stop spot for all the information around the transition to SAP Cloud ALM!

- General information
- Functional comparison and transition guidance
- Transition recommendations and strategy
- Additional resources, videos and documents

Transition Center

The screenshot shows the SAP Support Portal interface for the 'Transition to SAP Cloud ALM' topic. The top navigation bar includes 'SAP Support' and links to 'My Support', 'Products', 'Tools', 'Maintenance', 'Offerings & Programs', and 'ALM'. The breadcrumb trail reads 'SAP Support Portal Home / Application Lifecycle Management / SAP Cloud ALM'. The main heading is 'Transition to SAP Cloud ALM'. Below this, there is a text block stating that SAP Solution Manager is in mainstream maintenance until the end of 2027 and that SAP Cloud ALM is the Go-to ALM platform. A video thumbnail for 'SAP ALM Summit EMEA 2022 Day 1' is featured, with a play button icon. To the right of the video, there is a list of bullet points highlighting the benefits of SAP Cloud ALM. At the bottom, a summary statement reads: 'In a nutshell: SAP Cloud ALM is the Go-to ALM platform for all SAP customers.'

**SAP Support** My Support Products Tools Maintenance Offerings & Programs ALM

SAP Support Portal Home / Application Lifecycle Management / **SAP Cloud ALM**

**Transition to SAP Cloud ALM**

Strategy Overview Examples Transition Support Resources

### Transition to SAP Cloud ALM

SAP Solution Manager is in mainstream maintenance until the end of 2027. SAP Cloud ALM is the Go-to ALM platform for all SAP customers. SAP recommends to complete the transition to SAP Cloud ALM before this date.


SAP supports our customers with this transition! This page serves as a one-stop-shop for information about and resources for the transition from SAP Solution Manager to SAP Cloud ALM.

You can already move to SAP Cloud ALM for operations and service. Move to SAP Cloud ALM for implementation at your own pace, once the required functionality is ready for you.

There is enough time to prepare and execute this transition. Start now!



### Overview



- ✓ SAP Cloud ALM delivers ALM for the Intelligent, Sustainable Enterprise, while offering foundational support for today's customer landscapes.
- ✓ SAP Cloud ALM comes with lower cost of operation and maintenance, is easy to adopt and use, while providing innovative functionality.
- ✓ SAP Solution Manager is in mainstream maintenance until the end of 2027. SAP recommends to complete the transition to SAP Cloud ALM before this date.
- ✓ You can add SAP Focused Run to address advanced operations needs and to manage a significant on-premise footprint.

**In a nutshell: SAP Cloud ALM is the Go-to ALM platform for all SAP customers.**

# SAP Focused Run

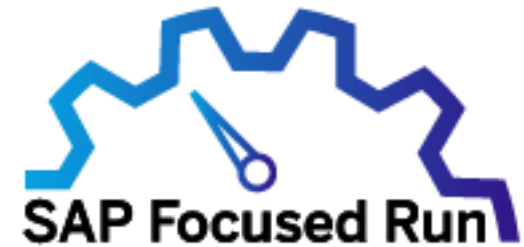




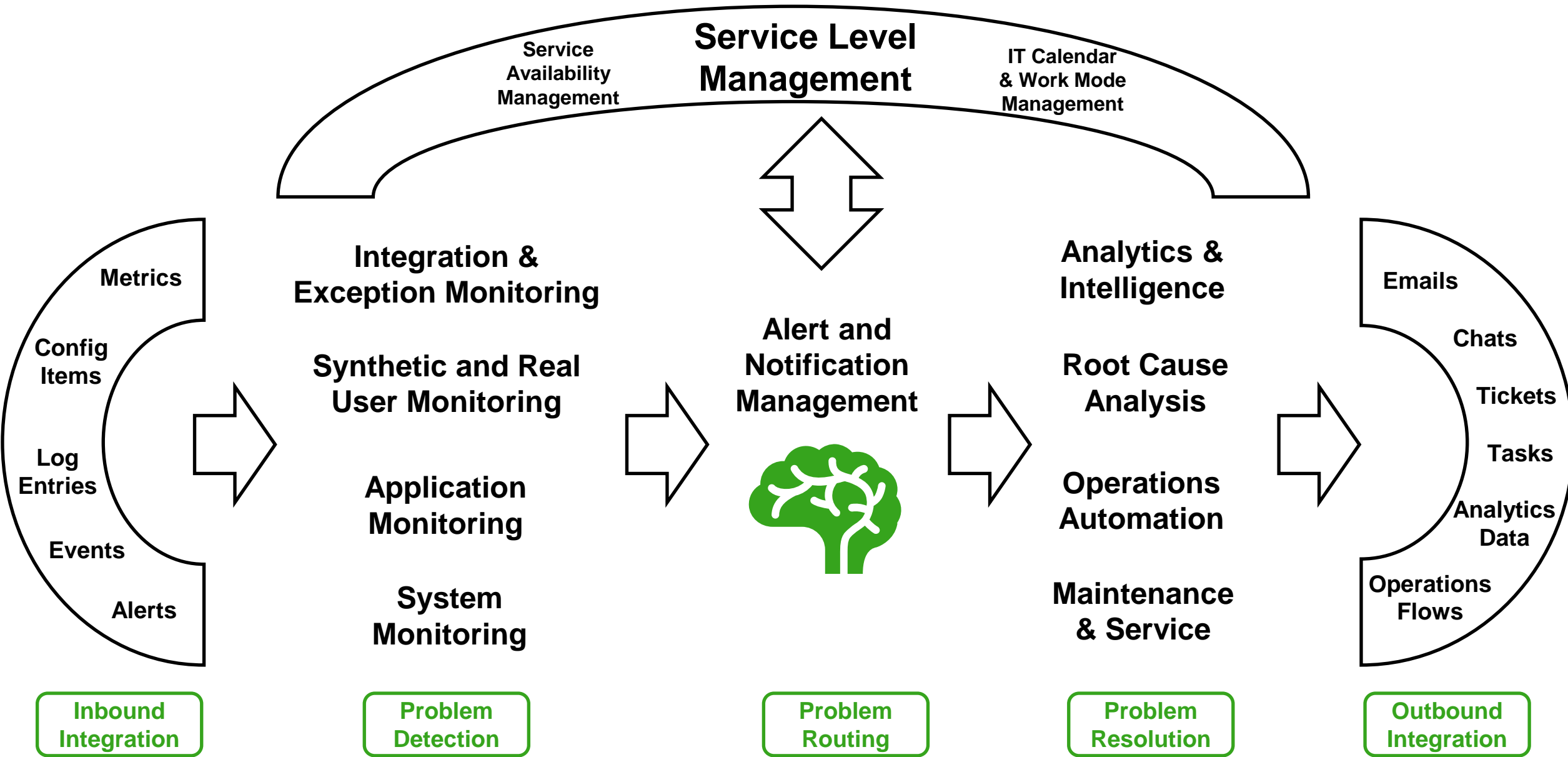
# SAP Focused Run – Positioning

Ensure health of hybrid solution landscape by monitoring and alerting - Increase operations efficiency by automating operations tasks - Enable root-cause analysis on deep technical level

- Is a **powerful solution for customers & partners** to operate their solution **centralized and highly automated with minimal TCO**
- **Addresses advanced customer needs** in terms of scalability, data volumes, performance, security, automation, openness, analytics & intelligence
- Uses the **power of SAP HANA as a platform**, including replication, partitioning, predictive analytics, and compression
- **Offers anomaly prediction, threshold recommendation as well as automated alert clustering** based on monitoring & alerting data retrieved from the connected cloud services and systems
- Addresses the specific needs of **internal or external IT service providers** covering **system management** as well as **application management** for cloud services and systems
- Is an official **SAP price list product**, which requires dedicated license & maintenance contract



# SAP Focused Run – Functional Overview



# SAP Focused Run in comparison

## When to use SAP Cloud ALM or SAP Solution Manager?

- Customers who have to operate BUILD and RUN in **one shared infrastructure** (integration first)
- Customers who have to operate a **medium size landscape** with reasonable effort
- Customers who are **satisfied with the functional scope** as today provided by SAP Solution Manager or SAP Cloud ALM
- Customers who are **not interested to consume the latest innovations** coming from development

## When to use SAP Focused Run?

- Customers & Partners who have to **operate large size landscapes** with advanced needs in terms of scalability, performance, security, and automation
- Customers & Partners who are interested in **advanced functionality** as high data volume monitoring and AI use cases
- Customers who like to establish **different release cycles** for BUILD and RUN functionality (segregation of duties)
- Customers & Partners who are interested in **co-innovation based on SAP HANA**

# SAP ALM Summit APJ 2024 – 23rd July – 25th July

In-person experience on SAP Application Lifecycle Management (ALM) Solutions @ SAP Labs India, Bengaluru



**SAP ALM SUMMIT APJ 2024**  
**Ignite your ALM Journey**

SAP Cloud ALM   SAP Focused Run   SAP Solution Manager 7.2

23-25 July  
SAP Labs India, Bengaluru

**Early Bird Tickets now Live!**  
80% discount. Limited period offer.

**Register Now!**



<https://events.sap.com/sap-alm-summit-apj-and-emea-south-2024/en/home>



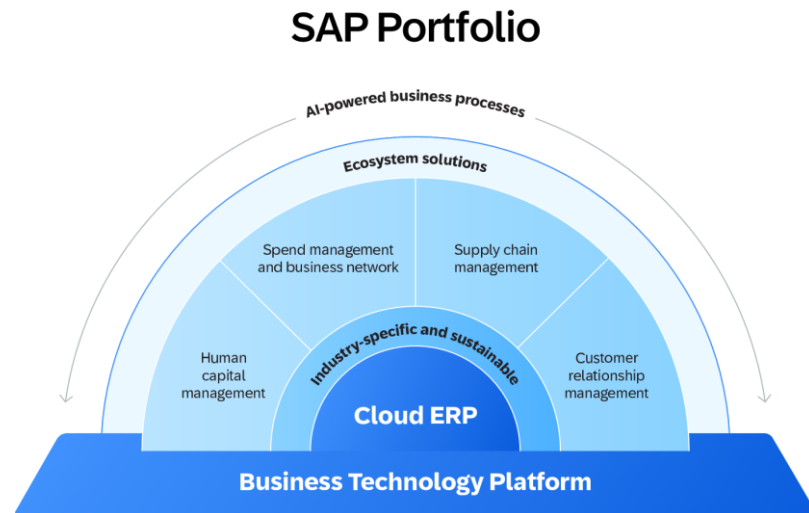
# Helping you achieve more with Cloud Application Services



**Mine Ecevit**

Solution Head - Innovation  
Management

# Innovation and transformation for the Intelligent Enterprise



Embedded  
standard cloud  
services from  
SAP

SAP Cloud  
Application  
Services,  
**fixed scope  
packages**

SAP Cloud  
Application  
Services,  
**custom-  
tailored  
offerings**

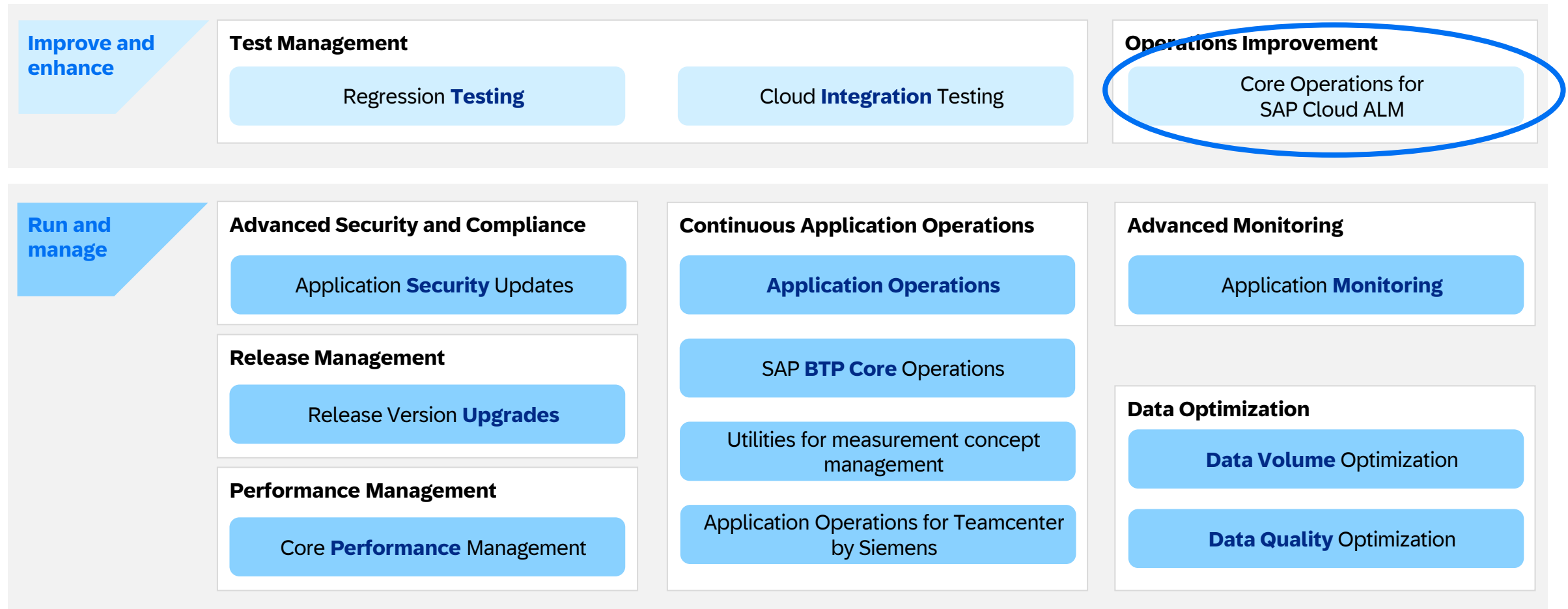


### **SAP Cloud Application Services**

deliver a full spectrum of value-adding support and solution improvement services across multiple layers

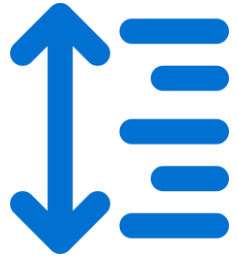


## Overview of complementary packages for SAP S/4HANA Cloud, private edition



Complementary SAP Cloud Applications Services packages are extending the support from SAP for SAP S/4HANA Cloud, private edition customers. Package delivery is fully integrated with the baseline scope and will be governed by the SAP client delivery manager (CDM).

## Value Proposition



Fully managed SAP Cloud ALM tenant by SAP Experts **increasing efficiency and usage** of the tool.



Outcome-based service, **taking the load off customer's shoulders.**



**Reduced costs** with accelerated usage, set up by qualified team, swift issue resolutions and guidance on the best practice usages



Focused Attention: **Direct access to development** & product support teams on critical issues and monitoring inputs.



**Service Request fulfillment by experts** with understanding of customer environment



Ensure SAP Cloud ALM is **optimally embedded in customers Cloud landscape** and maximizing the benefits from all its latest capabilities.

## What does SAP do ?



Performing **application-level health monitoring** of SAP Cloud ALM service components.

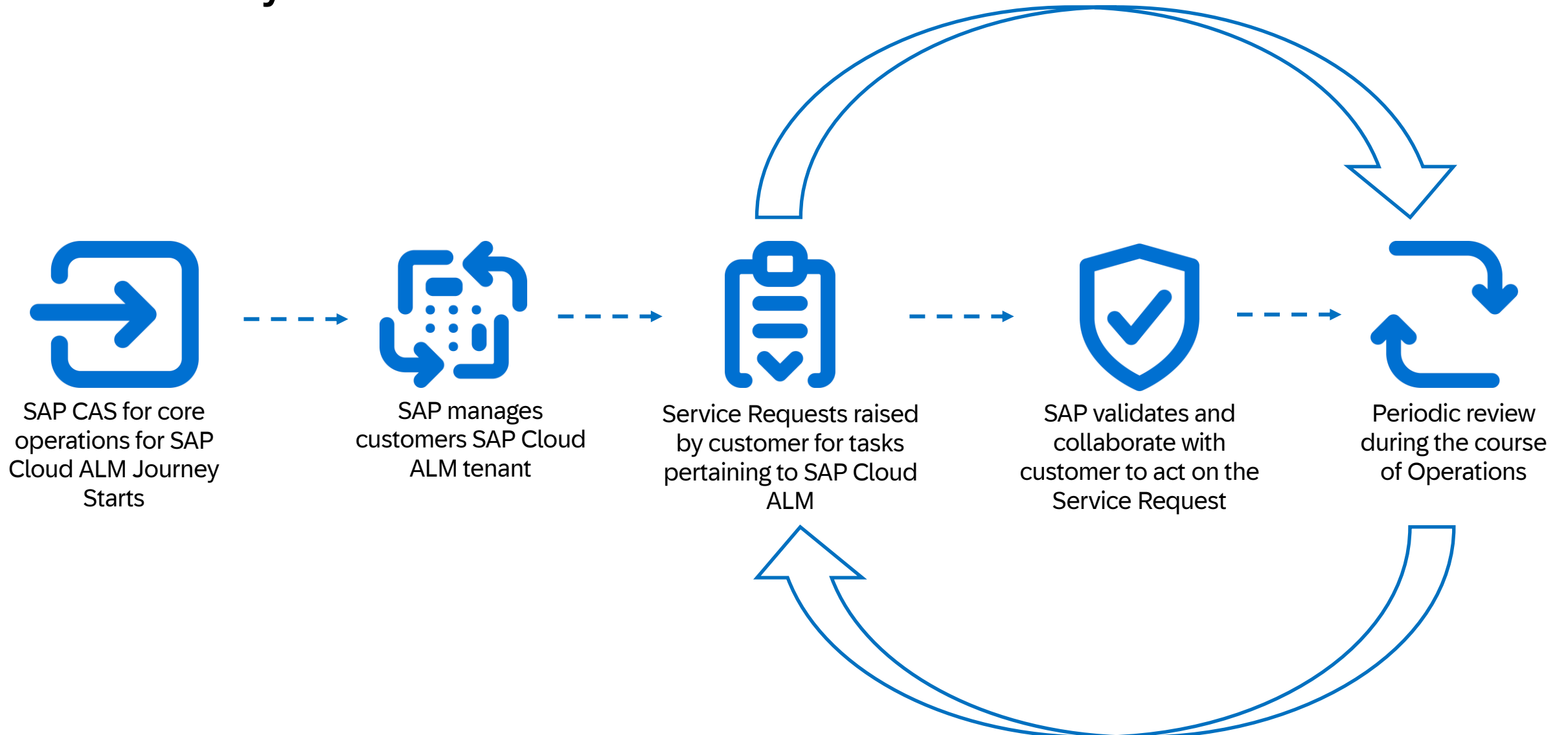
Service request fulfillment for core operations focusing on **Landscape Management &** connectivity with managed systems , **Identity Management & Identity Authentication** Services, **Integration into Cloud Transport Management, User Management**

Analysis and remediation of issues identified using standard operating procedures for components of **Landscape Management, Business Service Management** and **HANA Memory** component of SAP Cloud ALM

Analysis and recommendations for **continuous improvement activities** around SAP Cloud ALM

## SAP CAS for core operations for SAP Cloud ALM

### Service Lifecycle



## Value proposition in a nutshell

# Value-Adding SAP Cloud Application Services

### Seamless, SaaS-like consumption

The request and fulfilment process of the value-adding SAP Cloud Applications Services is the same as for the baseline cloud services from SAP, automated as much as possible.

### Predictable outcome at predictable price

SAP Cloud Application Services packages have a clearly described scope, defined RACI and are provided at a fixed price per year.

### End-to-End governance

SAP is your trusted partner for managing infrastructure, systems, solutions or even their functionalities based on your requirements holistically.

### Flexible scope

You can hand over additional technical and functional managed services completely to SAP and focus on business processes and outcomes, changes can be made easily via scope adjustments.

### Reach and scale

SAP Cloud Application Services provide a globally available service portfolio – adjustable to certain geographies, languages or solution areas, or even for your complete SAP landscape globally.





# Thank you.

Contact information:

**Hakki Bosnali**

[ismail.hakki.bosnali@sap.com](mailto:ismail.hakki.bosnali@sap.com)

**Dana Ibrahim**

[dana.ibrahim01@sap.com](mailto:dana.ibrahim01@sap.com)

**Mohammed Suhaib**

[mohammed.suhaib@sap.com](mailto:mohammed.suhaib@sap.com)

**Manal Siddiqui**

[manal.siddiqui@sap.com](mailto:manal.siddiqui@sap.com)

**Mine Ecevit**

[mine.ecevit@sap.com](mailto:mine.ecevit@sap.com)

