

A woman in a hard hat and work clothes, overlaid on a background of stacked shipping containers. The woman is a stylized illustration with long, wavy hair, wearing a white hard hat and a white collared shirt with dark suspenders. She is smiling slightly. The background shows a large outdoor storage yard filled with stacks of shipping containers in various colors (red, blue, orange, yellow) under a bright sky with some clouds. A large, stylized blue arrow graphic points from the left towards the right, framing the woman and the text.

SAP Innovation Day for Supply Chain

Draw Your Future



SAP Logistics & Sustainability

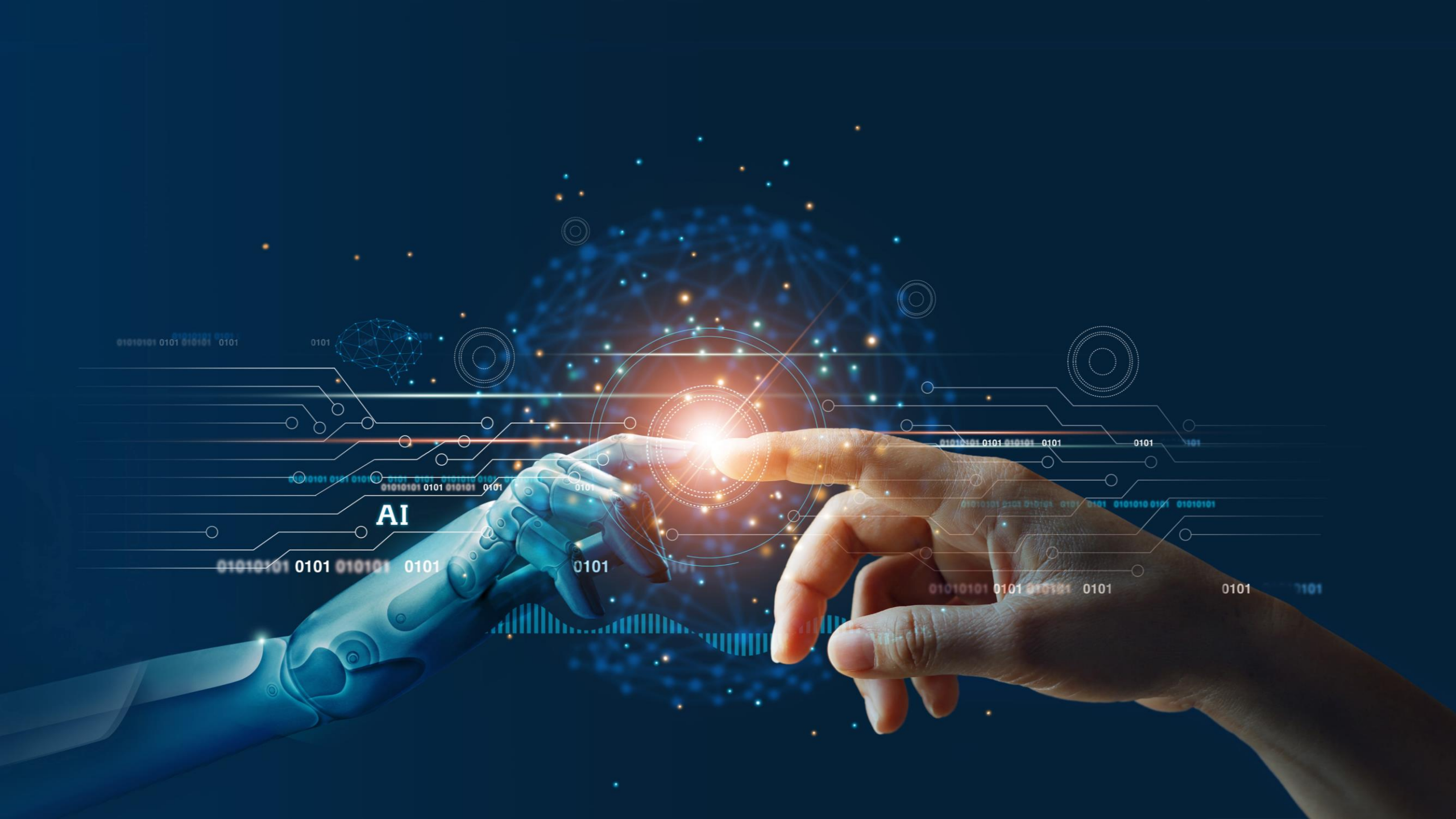
“A glimpse of the future”

Draw Your Future









AI



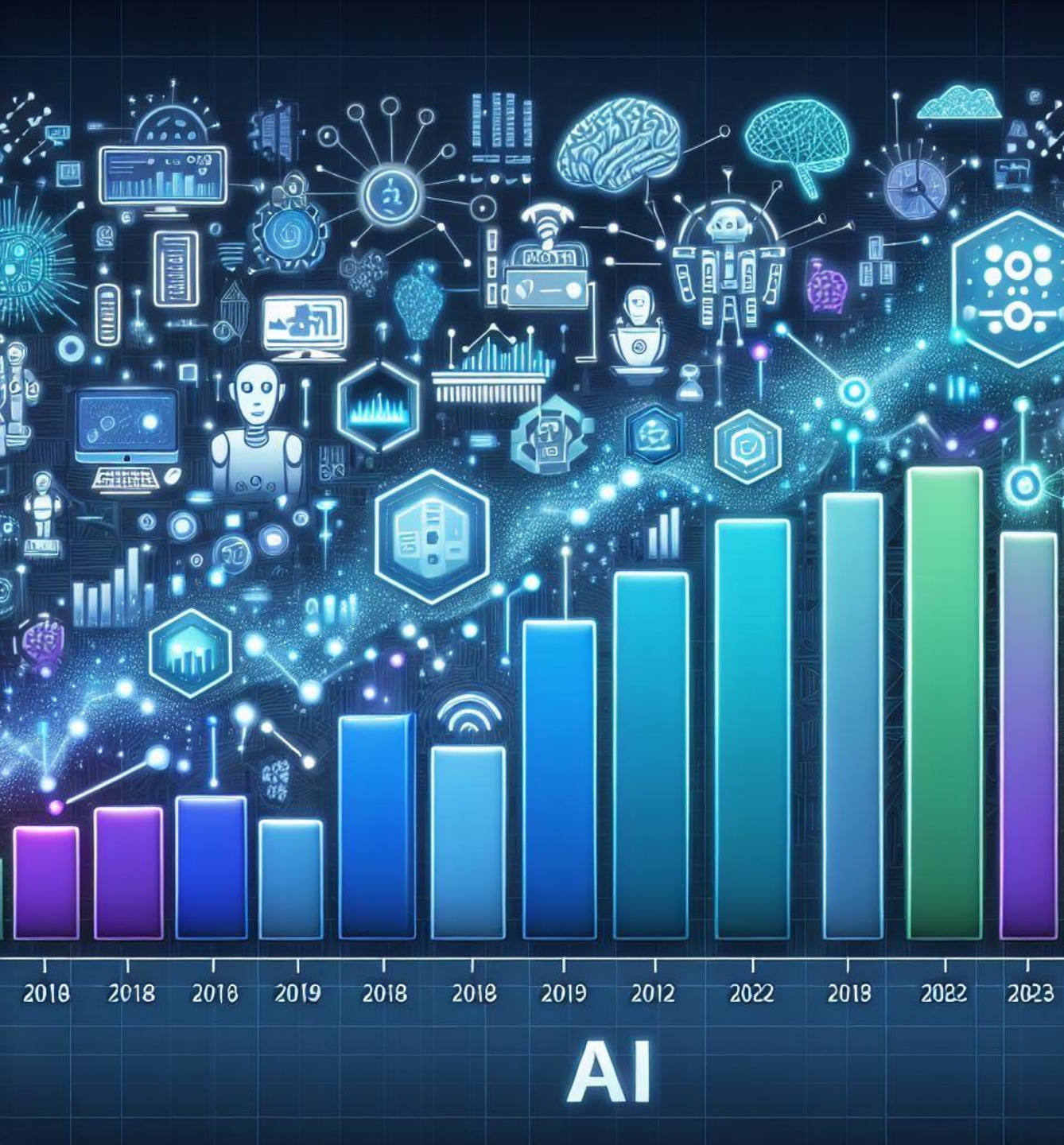


Today

Draw your future

- AI in Supply Chain
- Demo's of the future
- What's available today?

AI in Supply Chain



AI

SAP Business AI

Why is it so relevant and unique?



 ChatGPT 4o mini ▾



Create a workout plan
for resistance training

Create a morning routine
to boost my productivity

Test my knowledge
on ancient civilizations

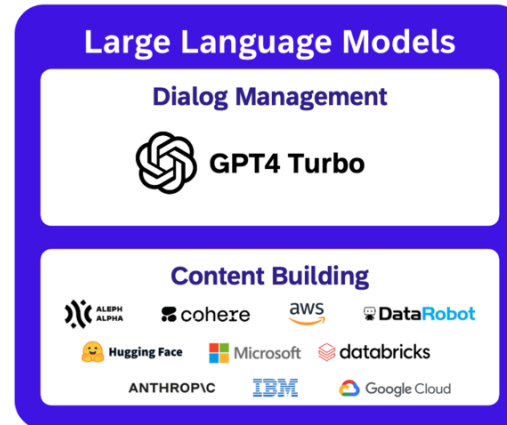
Help me pick
an outfit that will look good on camera

Message ChatGPT



SAP Business AI

Why is it so relevant and unique?



[Via GenAI Hub](#)

SAP Business AI

Why is it so relevant and unique?



Large Language Models

Dialog Management



Content Building



Via GenAI Hub

SAP Business AI

Why is it so relevant and unique?

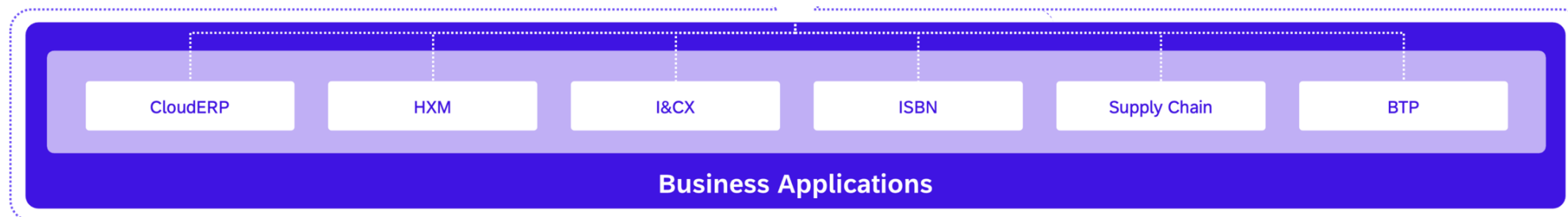


Large Language Models

Dialog Management

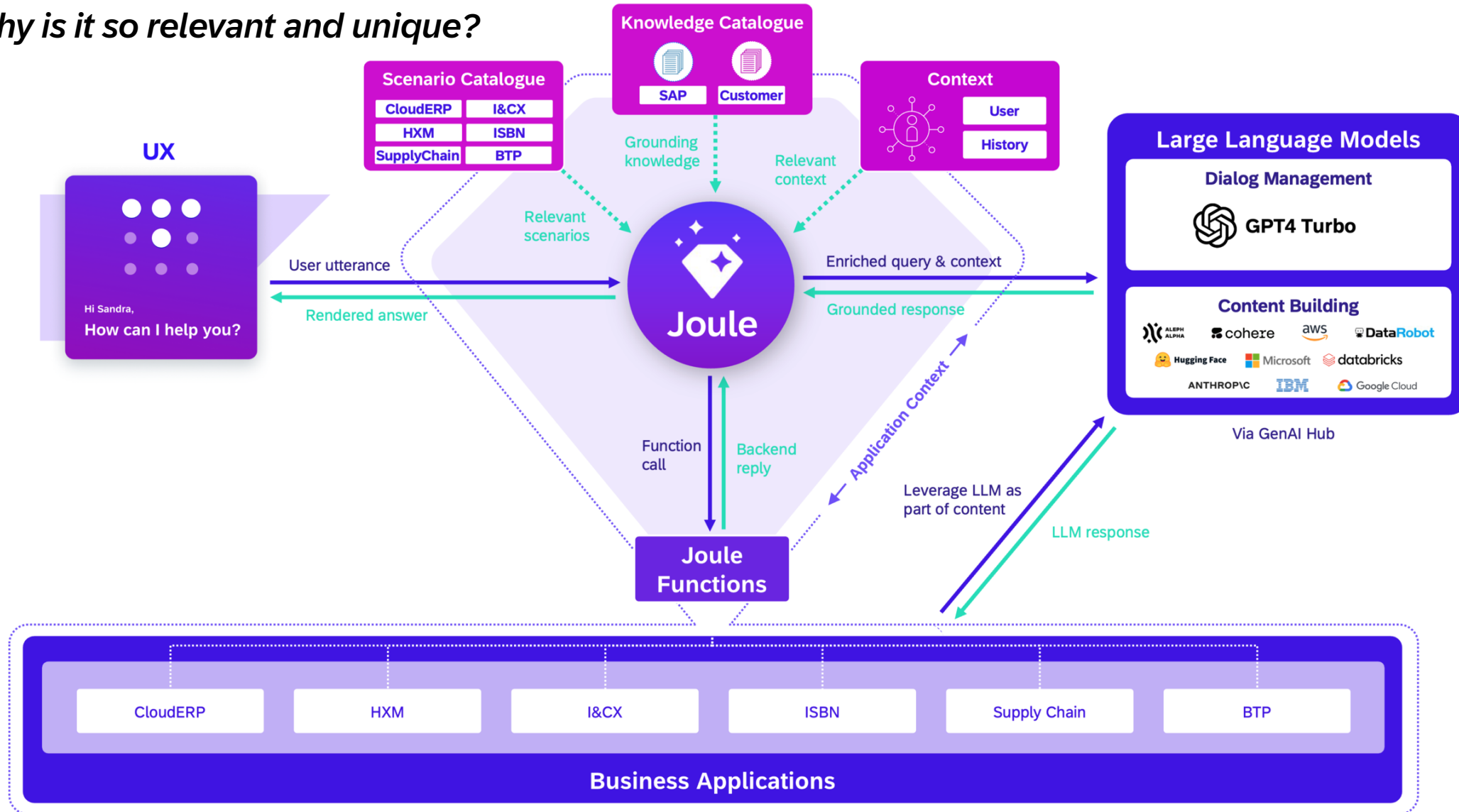


Content Building



SAP Business AI

Why is it so relevant and unique?



The future



resilience:

“an ability to recover from or adjust easily to misfortune or change.”

—Merriam-Webster Dictionary



Fri, October 25 | 68°F ☁

Good morning!

New Supplier Risk Event

Flooding of industrial area in Xiaolangdi. Production of Supplier SensePro Technologies Inc. is affected.

SAP Integrated Busi... · now [Learn More](#)

To-Dos

Sales Order Confirmations
8 hours ago

Electronic Components
Order: #2301445

Sensor MZ45s822
300000

[Check](#)

Finalize Consensus Demand Plan
Mya Cooper

Generate Statistical Forecast

[Confirm](#)

Optimize Inventory Levels
10 hours ago

Check current Safety Stocks

[Confirm](#)

Leave Request
Ruben Summer
2 days ago

June 17th - June 21st, 2024
Time Type: Vacation

[Approve](#) [Reject](#)

Insights

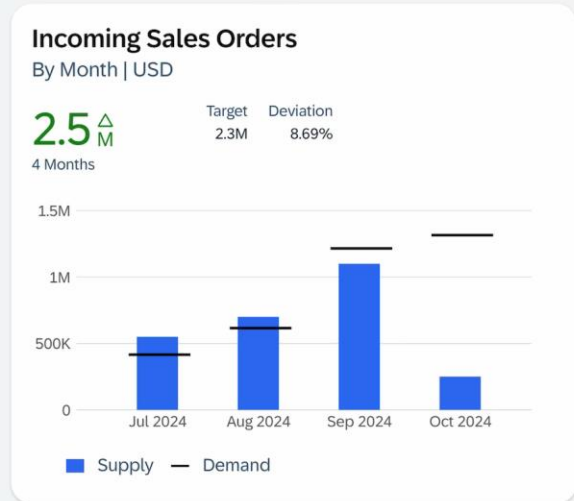
Supplier Risk Events
Today, Oct 25, 2024


- SensePro Technologies Inc. (Eastern China)
Flooding of Industrial Area **USD 50,000**
- ACME Ltd. (UK)
Labor Strike in Manufacturing Industry **USD 25,000**
- BrightWave Optical SE (Germany)
Labor Strike in Public Transport **USD 5,000**

Marketing Campaigns
Q4 2024

Circular Circuit Board Launch (US)
Platform: Google Ads
Cost: \$75,000
Impressions: 5,000
Clicks: 2,500
Active: 2 of 8 weeks

Circular Circuit Board Launch (EU)
Platform: LinkedIn
Cost: \$23,800
Impressions: 3,498
Clicks: 1,300
Active: 2 of 8 weeks



 **Arrival Notification** ✕

Truck TR_07 arrived at Loading Dock 3 - clearance initiated.

SAP Transportation ... · now [Show More](#)

Performance

Shipments **5,738** ▲ +13.2%

On-going Deliveries **320** ▲ +33.8%

Completed Deliveries **6,311** ▲ +14.1%

Warehouse Filter

- All
- DC01 - Ohio City
- DC02 - Atlanta
- DC03 - Baltimore
- DC04 - Buffalo

Inbound Delivery

Today

4 of 68

| Order | Delivery | Priority | Carrier | Dock | Status |
|--------|-------------|--|--------------|--------|------------|
| 134123 | Nov 3, 2024 | ↑ High | Cargo 55 | Dock 3 | in transit |
| 134124 | Nov 3, 2024 | → Medium | LHD Intl. | Dock 4 | in transit |
| 134125 | Nov 3, 2024 | ↓ Low | SPU | Dock 6 | in transit |
| 134126 | Nov 3, 2024 | ↓ Low | Transit Inc. | Dock 9 | in transit |

Warehouse Inbound KPIs

Today

On Time Shipments **92.22%**

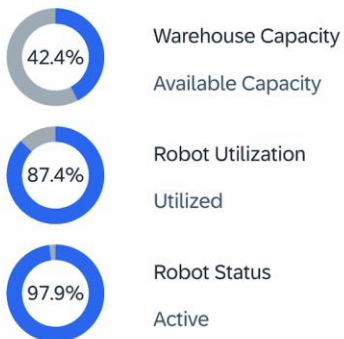
On Time in Full **90.32%**

Putaway Accuracy **98.31%**

Average Dock-to-Stock Cycle Time (minutes)

81

Warehouse Status



Outbound Delivery

Today

4 of 23

| Order | Delivery | Ship To | Carrier | Dock | Status |
|--------|-------------|----------|--------------|---------|----------|
| 300254 | Nov 6, 2024 | Orlando | LHD Int. | Dock 1 | planning |
| 300253 | Nov 5, 2024 | Newark | Transit Inc. | Dock 4 | loading |
| 300252 | Nov 5, 2024 | New Bern | Cargo 55 | Dock 10 | loading |
| 300251 | Nov 5, 2024 | New Bern | SPU | Dock 7 | loading |

Warehouse Outbound KPIs

Today

On Time Shipments **98.22%**

On Time in Full **93.86%**

Pickaway Accuracy **97.31%**

Internal Order Cycle Time (minutes)

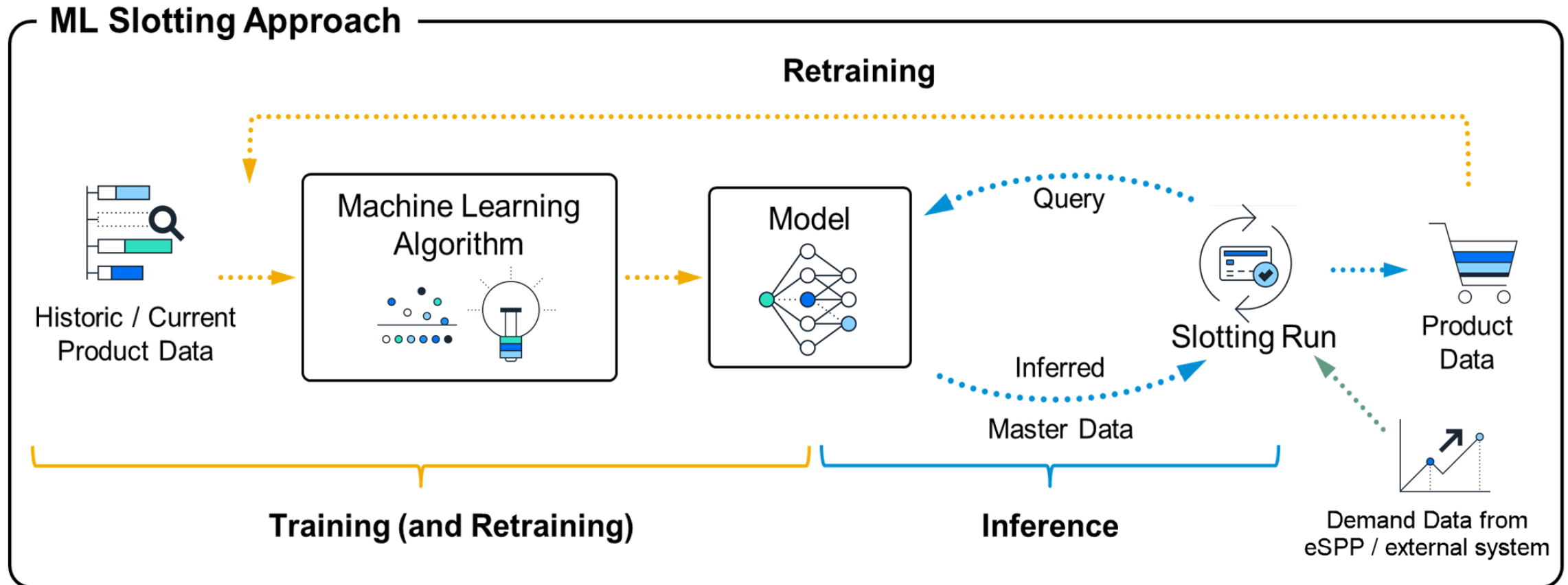
65

Total Order Cycle Time (minutes)

76




Slotting by Machine Learning




To get started: role **SAP_BR_ANALYTICS_SPECIALIST** is required

Model training happens in app *Intelligent Scenario Management*

Other Planned AI Powered Capabilities

| AI for Warehouse Task execution forecast | Context | Value | Planned release |
|---|---|---|-----------------|
|  | <ul style="list-style-type: none"> Evaluate actual execution times of confirmed WTs based on historical data For new WTs, the system will forecast execution time | <ul style="list-style-type: none"> For time critical warehouses, it could be very useful to plan the workload of the day | Q3, 2025 |

| Intelligent Picking (Waveless Picking) | Context | Value | Planned release |
|---|--|---|-----------------|
|  | <ul style="list-style-type: none"> System will re-assess existing priority assignments Re-assign WTs based on timings and cut offs | <ul style="list-style-type: none"> Optimize open WO/WT to the available resources Reduced lead times Reduced travel distance | Q3, 2025 |

Goods Receipt Analysis

Leveraging GenAI

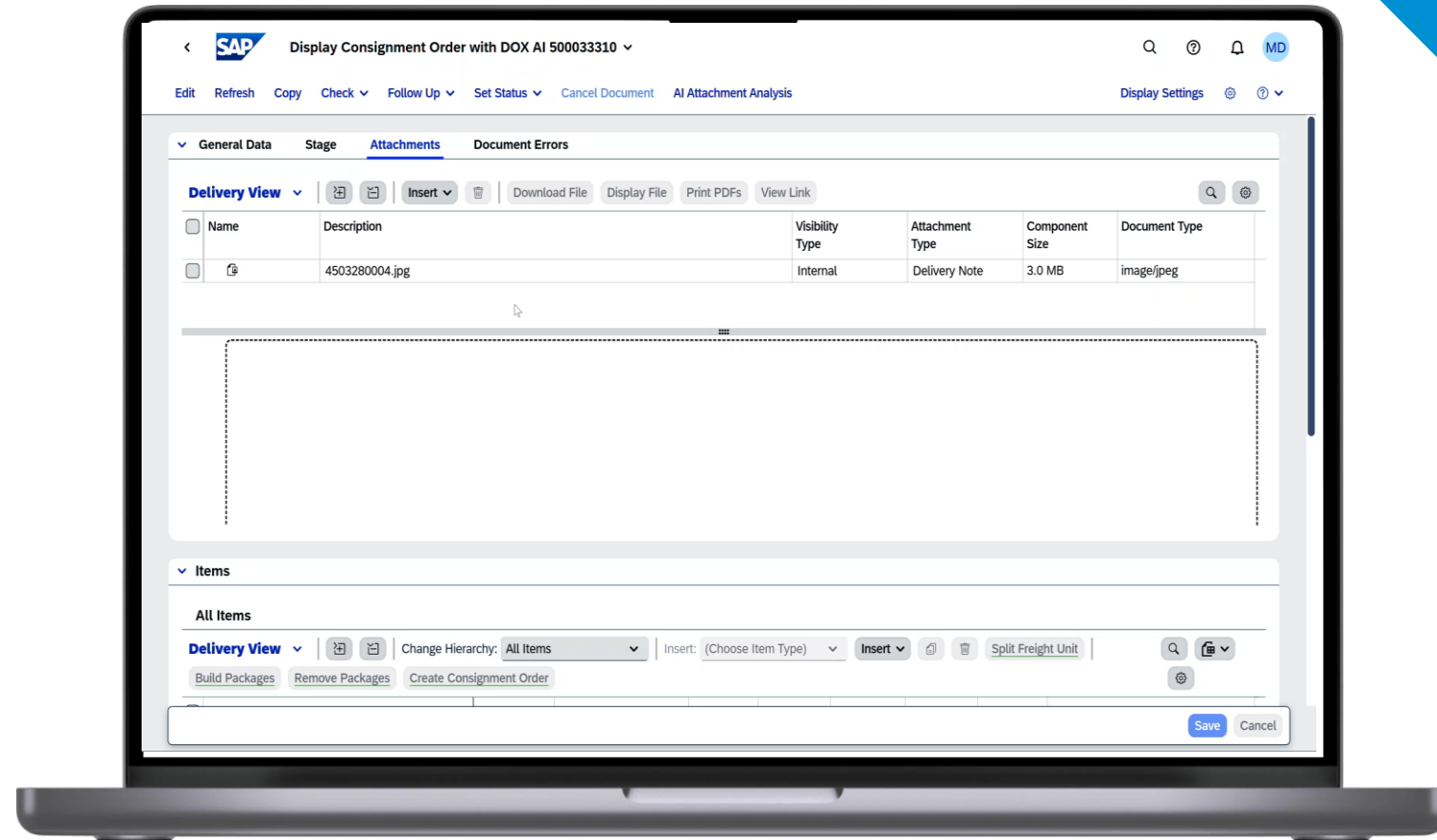
Pilot release – SAP S/4HANA
2023 FPS01

Solution

- Automatic creation of inbound cargo documents based on Large Language Model / **DOX & GPT-3**

Key Benefits

- Automatic checking of delivery notes
- **Reduce manual checks** at the gate to expedite freight unloading process
- Flag exceptions in freight orders allowing clerks in the back office to handle them
- **Reduce the hours spent** on manual checks and waiting times for trucks
- Improve **operational efficiency**



Conversational Planning

Leveraging GenAI

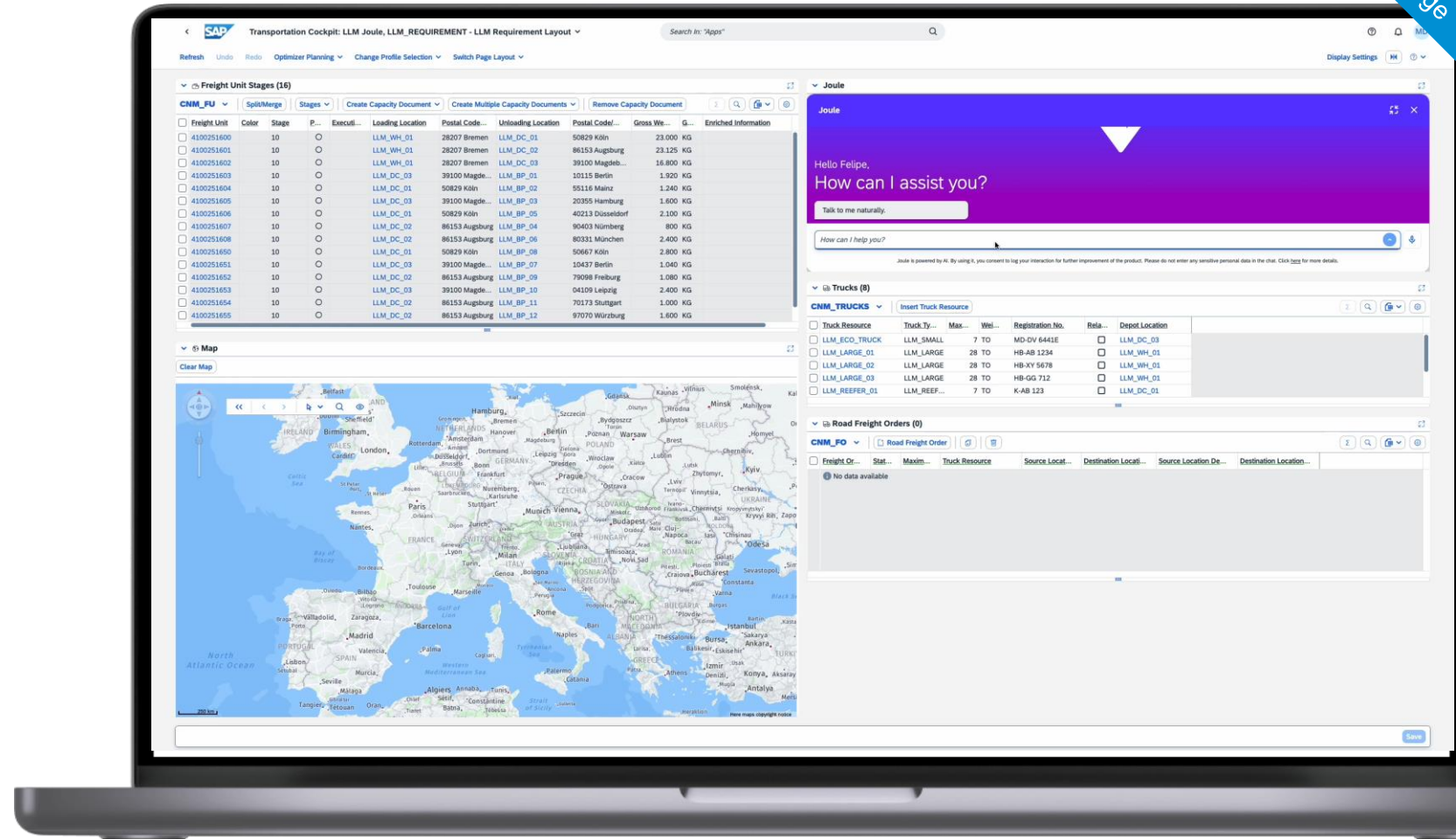
Lab view – Subject to Change

Scope

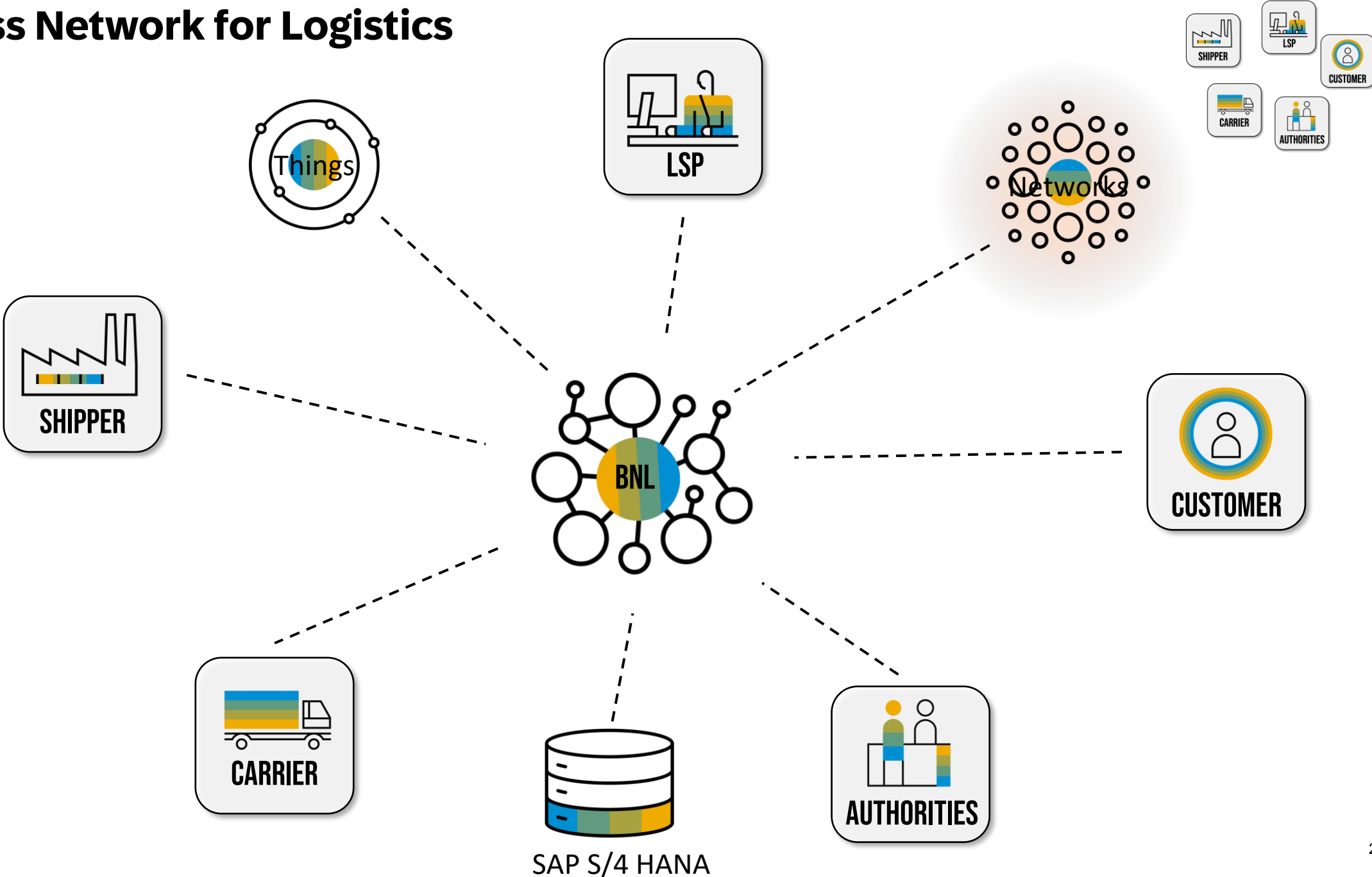
- Enhances the Transportation Cockpit UI with a natural language conversational interface, enabling users to perform UI actions, execute multiple commands, and retrieve planning context information seamlessly.

Key Benefits

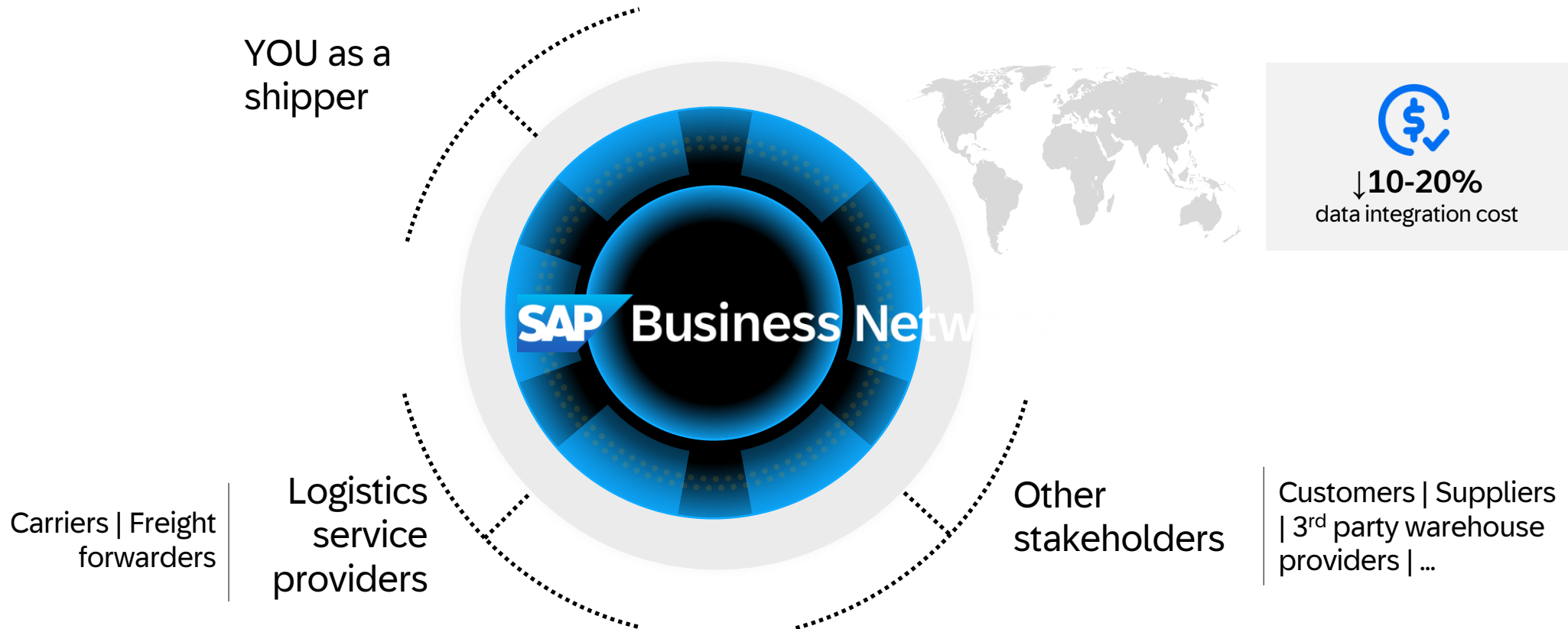
- Intuitive, human-like interaction improves accessibility.
- Adapts to individual user needs and workflows.
- Easier use for a diverse range of users.
- Combines verbal and visual processing for enhanced understanding and planning.



Business Network for Logistics



What does SAP Business Network offer for core Logistics?



FREIGHT COLLABORATION



Streamline logistics collaboration

GLOBAL TRACK AND TRACE



Provide insight-to-action for goods in-transit

Roadmaps for Digital Supply Chain



Transportation Management

Extended Warehouse Management

Business network for logistics



What's already possible

Release highlights of more than 100+ released AI scenarios

ERP and finance

SAP S/4HANA Cloud Private Edition

- ✓ Joule: Availability (EAC)
- ✓ TM: Intelligent Goods Receipt (activation via SAP Note)

SAP S/4HANA Cloud Public Edition

- ✓ Joule availability (EAC)
- ✓ Sales Order Auto Completion Base Scenario
- ✓ Sales Order Auto Completion- Turnkey auto-activate scenario
- ✓ AI-assisted US tax jurisdiction configuration (beta)
- ✓ Smart Summarization for Fiori Elements-based objects page (Beta)
- ✓ Expl-AI-n Configuration with Generative AI (beta)
- ✓ Advance Financial Closing Automated error explanation and guided resolution (beta)
- ✓ Financial Business Insights (beta)
- ✓ Manage Localized Form Template (beta)
- ✓ AI Merge for Payment Format (beta)

SAP Enterprise Service Management

- ✓ Next Generation Shared Services Automation

Supply chain

SAP Asset Performance Management

- ✓ Joule availability
- ✓ Visual Inspection (beta)
- ✓ Anomaly detection based on indicator values

SAP Digital Manufacturing

- ✓ Joule availability
- ✓ Visual Inspection
- ✓ QIR: Find similar problem-solving processes

SAP Integrated Business Planning

- ✓ Joule availability (EAC)
- ✓ Automatic Outlier Detection
- ✓ Dynamic Master Data Management

SAP Product Lifecycle Management

- ✓ Joule availability
- ✓ Joule Embedded for product innovation management

Industries

Discrete Industries:

- ✓ SAP Intelligent Product Recommendation for configurable products

IT and platform

SAP Analytics Cloud

- ✓ Just ask natural language query

SAP AI Core & Launchpad

- ✓ Generative AI Hub

Document Information Extraction

- ✓ Premium Edition

SAP BTP Cockpit

- ✓ Joule availability (Beta)

SAP HANA Cloud

- ✓ Vector Engine

SAP Build Code

- ✓ Code Generation (Joule)
- ✓ Joule Support of SAP S/4HANA Cloud Service Integration for Data Model and App Logic
- ✓ Joule Support of Mobile App Development
- ✓ Joule copilot to explore and explain a project's code
- ✓ Joule support of SAP S/4HANA Cloud Service Integration for data model and app logic creation
- ✓ Joule for Mobile app development (MDK)
- ✓ Joule for HANA project generation
- ✓ Joule supporting code search (Calorie)

SAP Integration Suite

- ✓ AI-enabled anomaly detection for API calls
- ✓ Generation of Integration Flows

SAP Automation Pilot

- ✓ Content Generation Assistant

SAP BTP Cockpit

- ✓ Joule integration (Beta)

SAP HANA Cloud

- ✓ Conversational SQL Console
- ✓ Support for vector indexing
- ✓ New vector clustering and segmented automated machine learning modeling

SAP Globalization

- ✓ Regulatory Change Manager

Sales and marketing

SAP CX AI Toolkit

- ✓ Custom data sources for intelligent Q&A
- ✓ AI tool builder enhancements
- ✓ Intelligent Q&A support for service tickets and cases
- ✓ Embedded experience in SAP Sales Cloud and SAP Service Cloud
- ✓ AI product attributes in the joule extension for Google Chrome
- ✓ On-demand attribute detection
- ✓ Support for visual searches in additional industries
- ✓ Support for object detection in additional industries
- ✓ Additional language support for AI outputs

SAP Sales Cloud, Version 2

- ✓ Email Draft Recommender
- ✓ Account Synopsis for Sales
- ✓ Machine learning: predictive opportunity close date
- ✓ Lead Booster
- ✓ Survey Trend Summary

SAP Service Cloud, Version 2

- ✓ Case Summary

SAP Field Service Management

- ✓ Intelligent Filtering
- ✓ Equipment Insights
- ✓ Assignment Duration Prediction
- ✓ Generation of Activity Summary

SAP Emarsys

- ✓ AI Subject Line Generator (Pilot)
- ✓ Preview Text Generation (Pilot)
- ✓ Segment Description Generation (Pilot)
- ✓ AI Product Finder w/o LLM-based search (Pilot)

Human resources

SAP SuccessFactors

- ✓ Joule availability
- ✓ Assisted Q&A in Joule (HR Policy)
- ✓ Job Description Generation
- ✓ Assisted Interview Questions with MS Teams
- ✓ Learning in Viva with Co-Pilot
- ✓ AI person insights for compensation discussions
- ✓ Generative AI for performance goals
- ✓ Generative AI for development goals
- ✓ Assisted Writing

Procurement

SAP Ariba

- ✓ Category Management market segmentation
- ✓ Category Management cost structure
- ✓ Category Management market dynamics
- ✓ RFP Builder within Category Management (beta)

SAP Concur

- ✓ Faster Itemization of Hotel Receipts
- ✓ Request Assistant: Cost estimates

SAP Fieldglass

- ✓ Job Description Generation
- ✓ Job Description Translation
- ✓ Statement of Work Description Generation

SAP Business Network

- ✓ Enhanced Responses to Discovery Postings
- ✓ Enhance Product Information on the Network Catalog

Growth areas

SAP Sustainability Footprint Management

- ✓ Emission Factor Mapping

SAP Sustainability Control Tower

- ✓ ESG Report generation with AI

SAP Signavio

- ✓ Performance Indicator Recommender
- ✓ Process Recommender

LeanIX Enterprise Architecture

- ✓ Inventory AI prompt
- ✓ AI-assisted text
- ✓ AI-generated context
- ✓ AI-supported translations

Upcoming SAP Business AI Scenarios Highlights

Q4 2024

ERP and finance

SAP S/4HANA Cloud Public Edition

- Insights on Business Objects
- Joule for Situation Handling
- Tax Explainer

SAP S/4HANA Cloud for Projects

- Intelligent Matching of Employees to Projects
- Smart Data Matching (beta)

SAP S/4HANA Cloud Private Edition

- ASM – Intelligent Maintenance Order Recommendation
- ASM – Simplified Business Partner maintenance v1
- ASM – Assisted Changes & Summarization of Change Requests (MDG)
- Finance & Risk – SAP Enterprise Service Management – Shared Services Automation for Finance Content
- Finance & Risk – AFC Feature: Guided Error Resolution
- Finance & Risk – Dispute Management via Communication Intelligence
- Finance & Risk – SAP Behavioral Insights for BRIM – Enhancing Intelligent Collection
- Logistics – TM: Intelligent Goods Receipt Analysis in Transportation Management v1
- Logistics – TM: Transportation Cockpit Planning
- Sales – Track Sales Orders: Faster insight into Sales Order fulfillment process v1 – Joule
- EPPM – Intelligent Project Assistant – Selected

SAP Signavio

- Process Analyzer: Text to insights

Supply chain

SAP Digital Manufacturing

- Manufacturing Issue Analysis and Solution Assistant

SAP Product Lifecycle Management

- Digitalization of Legacy Drawings
- Document summarization (beta)
- LLM based specification search (beta)

Human resources

SAP SuccessFactors

- Text Analyzer/Safety Scan
- Assisted Opportunity Marketplace Assignment Generation (User driven)
- Assisted 360 Reviews & Insights
- Assisted Writing with Recognition Messages
- Assisted Writing for People Profile, Onboarding, Dynamic Teams, Objectives, Key Results, and Talent Intelligence Hub
- Assisted Writing with Content Translation
- Assisted Progress Insights
- AI-assisted Person Insights – Compensation Discussion in new People Profile

Procurement

SAP Ariba

- Ariba – Scope 3 Emissions data capture
- Supplier ESG Scorecard Creation

SAP Concur

- Travel Personalization for flight recommendations

SAP Fieldglass

- Joule assisted report and search
- Joule assisted help information retrieval

SAP Business Network

- Assisted Q&A in Joule
- Invoice error summarization

Sales and marketing

SAP CX AI Toolkit

- Shopping Assistant: Ask the Product, Semantic Search and Intent based Search for consumers in Commerce Cloud
- AI tool builder support for list of records
- Automated AI agents
- Intelligent Q&A subject matter expert
- AI image generation with overlays
- Joule availability

SAP Sales Cloud, Version 2

- Business AI duplicate detection for accounts

SAP Service Cloud, Version 2

- Next Best Actions-Suggest Collaborators
- AI-assisted entity extraction

SAP Field Service Management

- Analysis of similar activities
- Equipment Insights: translations

SAP Enterprise Service Management

- AI-assisted backend entity extraction

Industries

- Discrete Industries – Intelligent Inbound Cargo Registration
- Life Sciences – Generative AI Assisted Batch Release
- Public Sector – Navigational Assistance to Public Sector Management Applications through the Joule Co-Pilot
- Retail – SAP Predictive Demand Planning
- Utilities – Expl. of EDIFACT-coded error message in MaCo

IT and platform

SAP BTP Cockpit

- Joule integration (GA)

SAP Build Code

- Joule copilot for queries regarding SAP application dev.

SAP Build Work Zone

- Joule integration

SAP HANA Cloud

- Intelligent Assistant in HANA Cloud Central
- Native Vector Embeddings

SAP Build Process Automation

- Generative AI for Process Automations

Q1 2025

ERP and finance

SAP S/4HANA Cloud Public Edition

- Financial Business Insights
- Smart Data Matching
- Advanced Financial Closing-Automated error explanation and guided resolution
- Intelligent Extensibility Accelerator for Business add-ins (BADI)
- Smart Summarization for Fiori Elements-based objects
- Easy Filter for Fiori Elements-based list reports
- Manage Localized Form Templates
- AI Merge for Payment Format
- GenAI for Situation Handling

Supply chain

SAP Asset Performance Management

- AI-powered Joule digital assistant for navigational and transactional use cases
- Visual Inspection (GA)

SAP Digital Manufacturing

- Integration of visual inspection with quality management of SAP S/4HANA for inspection planning
- Analyze efficiency and effectiveness of visual inspections

SAP Integrated Business Planning:

- Explanation of supply optimization planning results
- Generative AI Assistant for Excel Add-in
- What if scenario planning

Sales and marketing

SAP CX AI Toolkit

- MSFT reference in AI tool builder
- Combine sources in AI tool builder
- Record reference identification (orders, etc.)
- Smart action cards for cases (proactive insights)
- Role-specific email and meeting insights (customer insights)
- Custom AI tool for Commerce
- Commerce smart action cards (proactive insights)
- Multi agentic flow builder

SAP Sales Cloud, Version 2

- Sales order & pricing simulation insights
- Joule for Sales Cloud V2

SAP Field Service Management

- Generation of a service report including smart forms
- Providing Joule functions for the dispatcher
- Voice recognition and voice-to-text functionality

Consumer industries

- Automated promotion generation based on demand/traffic
- Advanced product and order search, summarize recent eCommerce and in-store transactions, and aggregating data to generate insights

Emarsys

- Block content generation for email (Pilot)
- Custom report builder (Pilot)

Procurement

SAP Ariba

- Bundling
- Contract Assistant

SAP Concur

- Policy search
- Cost estimates
- Travel Personalization – flight

Business Network

- BNP and BNSC – NextGen:
- Error Reporting
- PO Invoice
- PO Change List Navigation
- PO Change Item Navigation
- Service Order Navigation
- PO Navigation
- Query Status Navigation

Industries

- Discrete Industries – Joule Enablement for Intelligent Product Recommendation
- Life Sciences – Intelligent Error Resolution in the Life Sciences Supply Network
- Commodity Management – Generative AI Enabled Deal Capture
- Retail – Automated promotion generation based on demand / traffic
- Retail – Advanced product and order search, summarize recent eCommerce and in-store, transactions, and aggregating data to generate insights

IT and platform

SAP Analytics Cloud

- Just ask natural language query – Leverage SAP HANA cloud vector engine to enhance processing time

SAP ABAP

- ABAP AI SDK with ISLM
- Joule's ABAP Developer Capabilities

SAP Build Apps

- Formula Editor

SAP Datasphere

- AI-Assisted Search
- AI-Assisted Metadata Population for catalog

SAP HANA Cloud

- Knowledge Graph Engine
- Generative AI Toolkit
- NSE for Vector Data
- Langchain Graph RAG

SAP Integration Suite

- GenAI based Script-optimization

SAP Document and Reporting Compliance

- Electronic Documents Error Handling with Joule

What have we seen today?



Document Information Extraction

Delivery_Note_3211624.pdf

IceCreamManufact

Ice Cream Manufacturers Corp
88 S Park Square NE, GA 30060 Marietta, United States

Delivery To
Repair Services Inc.
Augusta Ave SE
30215-1402 Atlanta
USA

Contact
E-Mail: delivery@i.c.manufacturers.c
Phone: +1-770-742-222888

Date: 17.05.2023
Purchase Order: 3211624
ASN No: 80_80272556

Delivery Note 14522/42-3211624

| Pos. | Product ID | Product Description | Qty. | UoM | Reference No |
|------|------------|---------------------|------|-----|--------------|
| 1 | TM50 | Compact Thermometer | 1 | EA | 3211624 |

Carrier
Global Delivery
500 Joseph Hannah Blvd
GA 30263 Newnan

Delivery Conditions
FCA
Free Carrier

Data sent

Confirmation

- Document Upload
- Business Process Configuration
- Intelligent Extraction Program
- Intelligent Object Creation

Continue

Delivery Note

SolarTech Manufacturers

SolarTech Corp
17 Moore Blvd Kansas City, MO 64101

Delivery To
1234 Peachtree Street NW
Atlanta
GA 30309

Contact
E-Mail: solar.tech@manufacturers.us
Phone: +1 955-555-4567
Date: 21.05.2024
Purchase Order: 134124
ASN No: 80_80272556

Delivery Note 14522/42-3211624

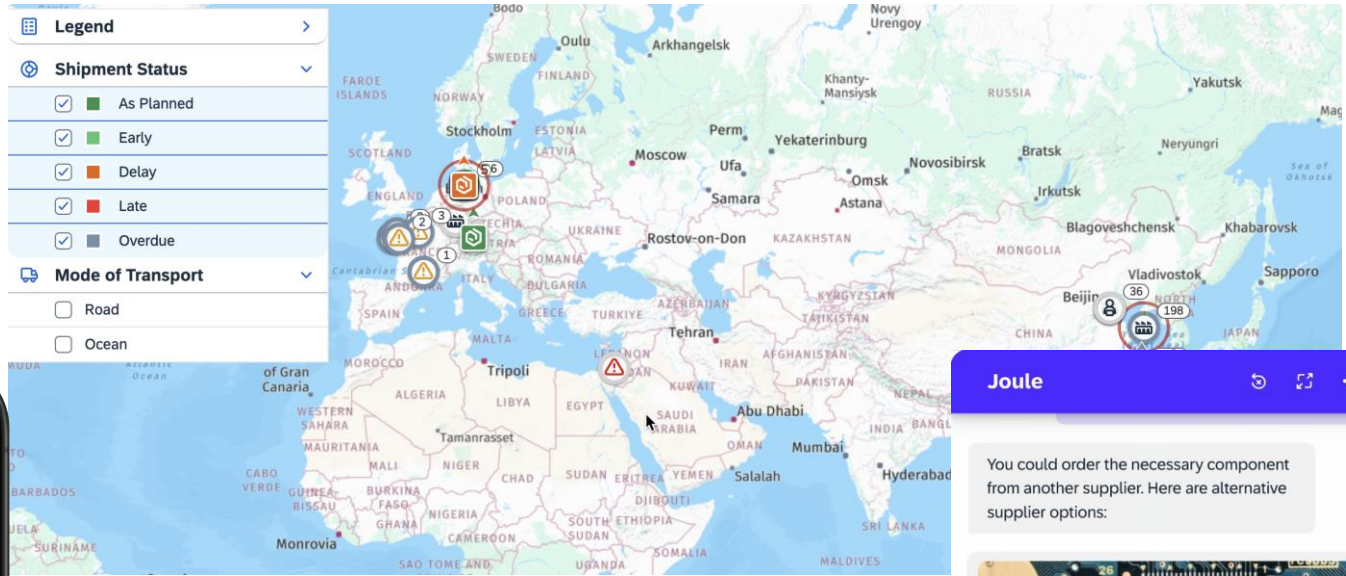
| Pos. | Product ID | Product Description | Qty. | UoM | Reference No |
|------|------------|---------------------|------|-----|--------------|
| 1 | 8050 | Solar Inverter Pro | 10 | EA | 3211624 |

Carrier
LIFE 585
24 Empire Street
80101 Kansas City
United States

Delivery Conditions
FCA
Free Carrier

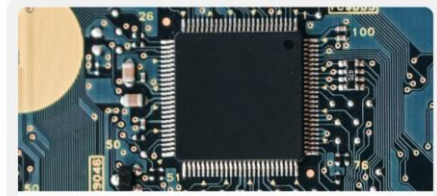
Signature: _____ Date: _____

View Scan



Joule

You could order the necessary component from another supplier. Here are alternative supplier options:



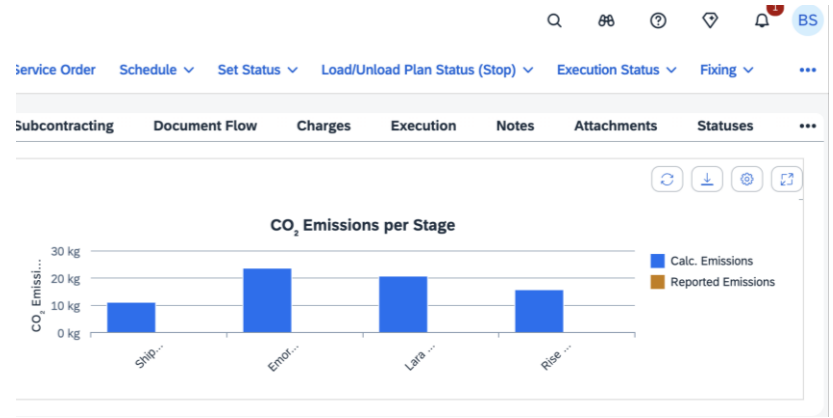
NanoCircuit SE Dresden

Material: Multilayer PCB

Delivery: 6 weeks by ship

EcoVadis Rating: **Bronze**

\$75,000
Total Procurement Cost



Please create scenarios for the above-mentioned alternative suppliers and tell me, which of these scenarios is the best in terms of risk versus





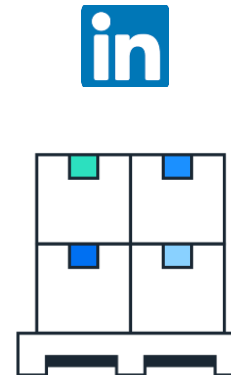


Join EWM Communities

Extend the Experience, engage with your Peers

VNSG SCM Focus Group

LinkedIn: Dutch EWM Community (Customer Only)





Bart Smetsers



Ralph Bazelmans

Thank you.

Contact information:

