

Unlocking Joule

A case-study on early adoption of Joule with S/4HANA PCE

WEL Networks and the beginning of their AI journey

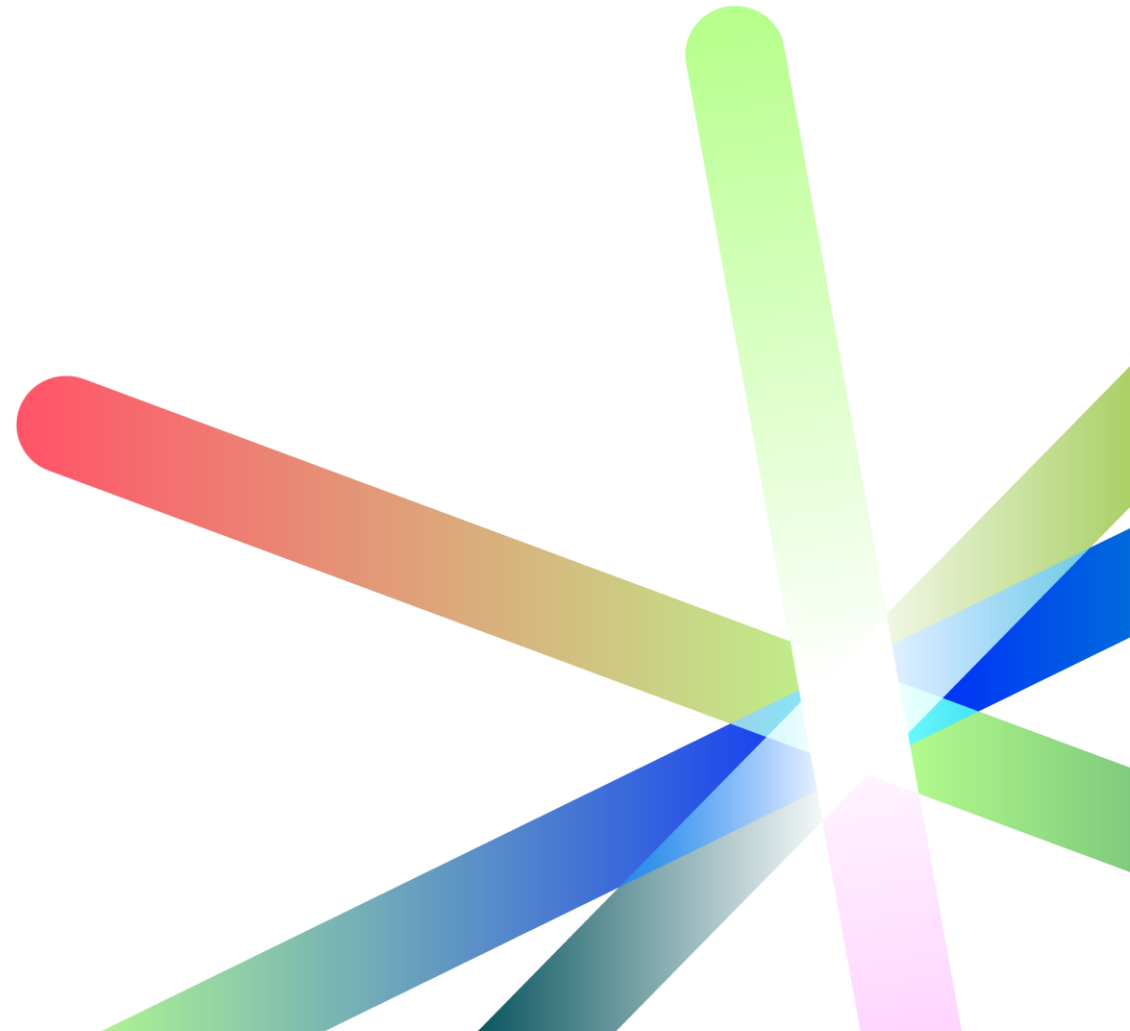
May 2025



Agenda

Today, we have pleasure in giving you a glance at a journey in implementing SAP Joule with S/4HANA PCE via the SAP Early Adopter programme.

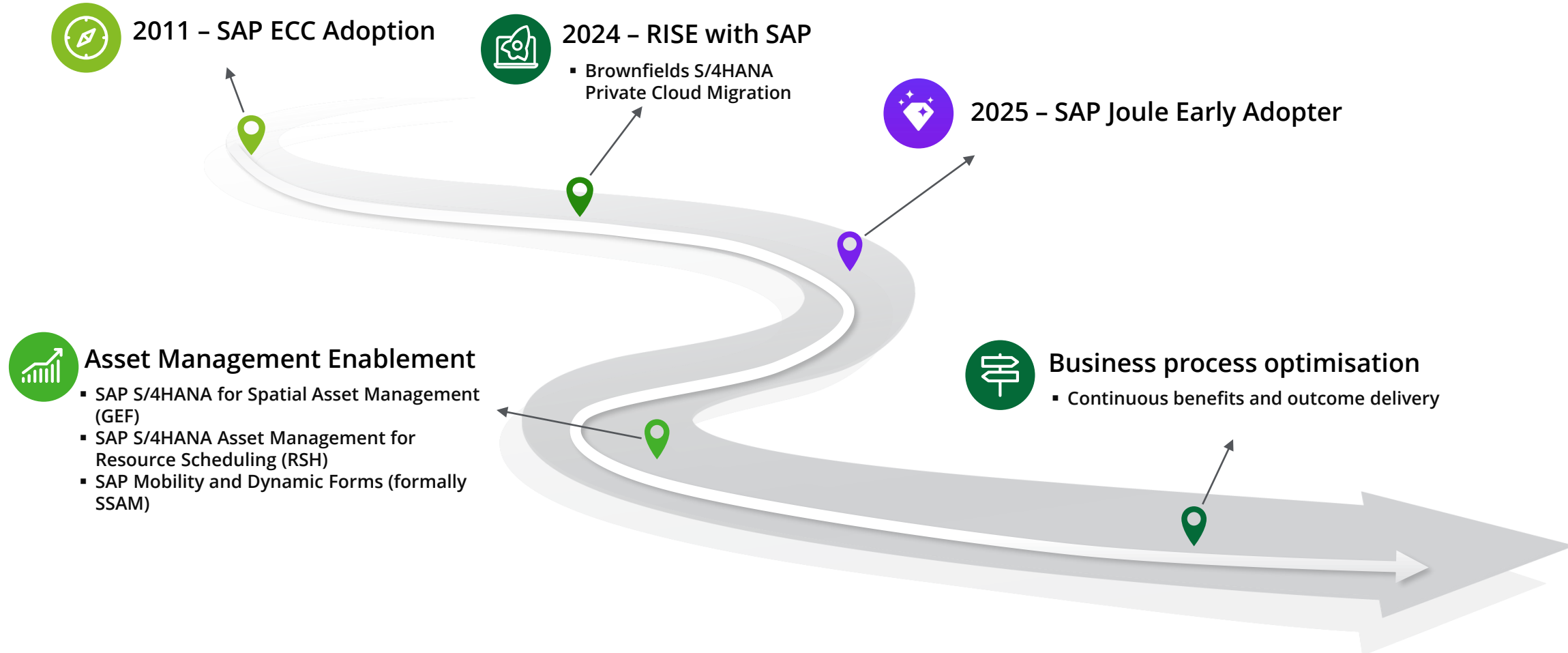
- 01 **WEL Networks Limited**
Overview
- 02 **Implementing Joule**
The Journey
- 03 **Technical Architecture**
Rise + Joule
- 04 **Post-Implementation Enablement**
Capabilities and Considerations



WEL Networks Limited

Overview

WEL Networks stands as the sixth largest electricity distribution company in New Zealand and build, own and operate over \$723 million worth of electricity network infrastructure. With well over 99,000 households and businesses connecting to their electricity services, they play an essential role in the economic and social development within the Waikato community.



Implementing Joule – The Journey

Early Adopter Care Programme

WEL Networks joined the Early Adopter Care Programme for SAP Joule in February 2025 to rapidly harness its potential. Joule was implemented very quickly by WEL through collaboration with Deloitte and SAP and is now actively being assessed in the WEL S/4HANA Cloud Private Edition test system.

Key benefits

- Dedicated SAP Back-Office support infrastructure to implement Joule
- Direct feedback and interaction while truly influencing the development of the solution for the future
- First-hand experience on the approach and enablement of the Joule instance plus assistance with connectivity to your SAP S/4HANA Cloud Private Edition System
- A follow-up SAP interview with a customer SME, where SAP actively monitors how the SME engages with Joule



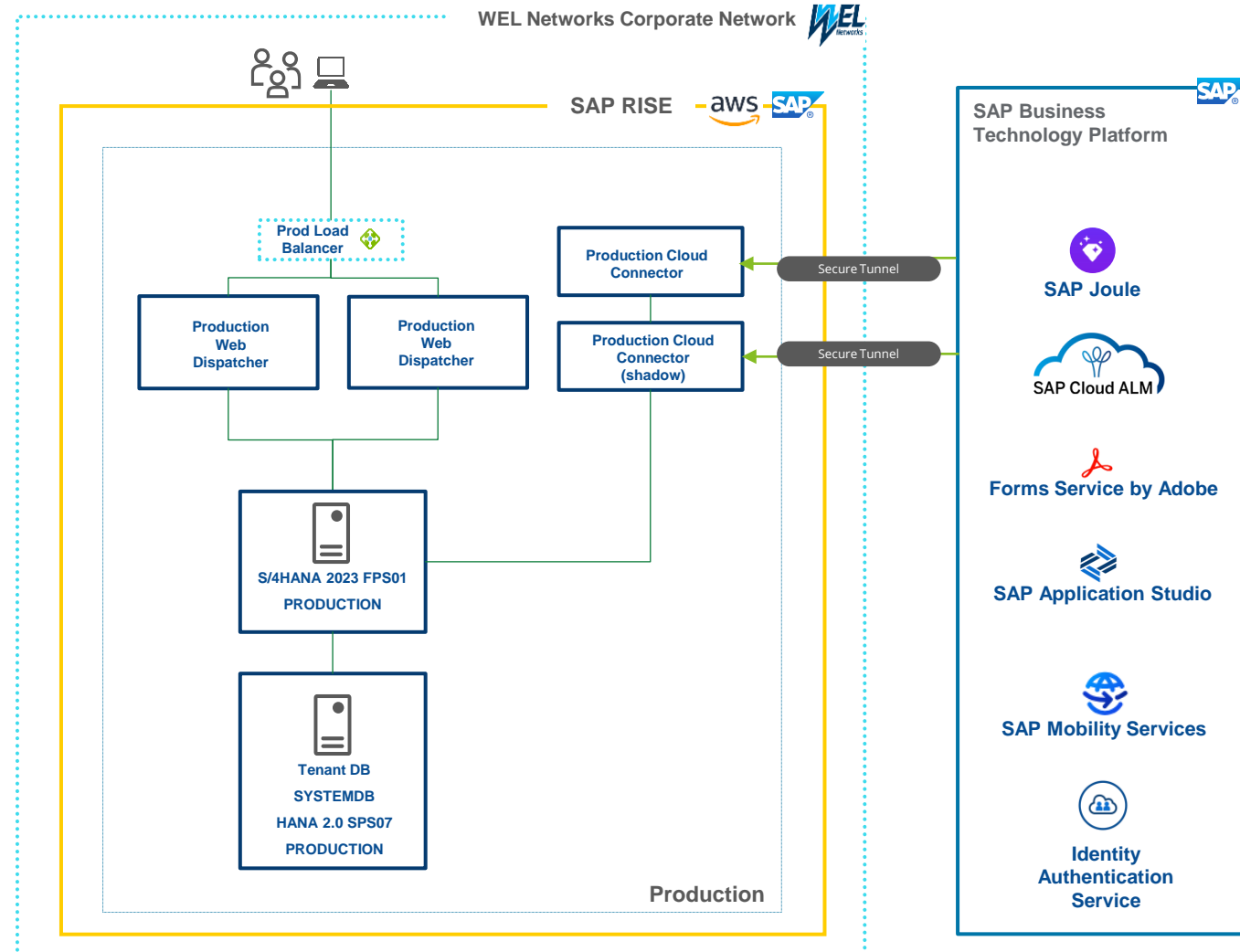
Technical Architecture

RISE with SAP + Joule

The diagram shows WEL's RISE with SAP S/4HANA Solution deployed on AWS with the SAP Business Technology Platform enabling advanced services. As part of the Joule implementation, there are some technical aspects that need to be considered.

Technical Considerations

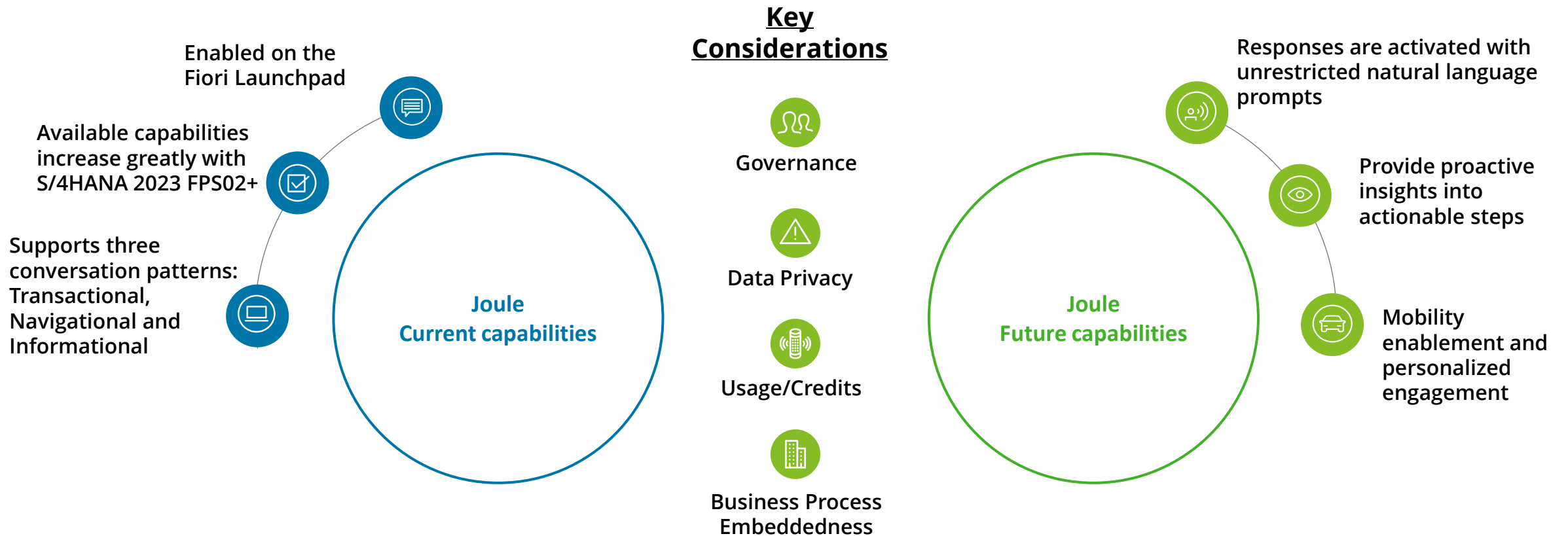
- Prerequisites include:
 - Minimum S/4HANA 2023 FPS01 in RISE,
 - SAP Build Work Zone, standard edition: enables navigation to different applications from Joule and supports role-based access scenarios,
 - Joule will be enabled in the same subaccount as SAP Build Work Zone,
 - SAP IAS and IPS: Joule must be integrated with the same SAP CIS tenant as the S/4HANA instance.
- Options to use the Joule Booster in SAP BTP to simplify the onboarding or perform the steps manually.
- Principal propagation must be activated in the S/4HANA landscape.
- A Joule instance can be connected to just one S/4HANA instance.



Joule Implementation Enablement

Capabilities and Considerations

The team is currently testing and assessing Joule's capabilities and continuing to work with SAP through the EAC programme. It is crucial to address key considerations before proceeding with a production deployment.



An abstract graphic on the left side of the slide, featuring several overlapping, rounded rectangular bars in various colors including pink, teal, blue, green, and yellow, creating a dynamic, starburst-like effect.

Thank you

This publication contains general information only, and none of the member firms of Deloitte Touche Tohmatsu Limited, its member firms, or their related entities (collective, the “Deloitte Network”) is, by means of this publication, rendering professional advice or services. Before making any decision or taking any action that may affect your business, you should consult a qualified professional adviser. No entity in the Deloitte Network shall be responsible for any loss whatsoever sustained by any person who relies on this publication.

As used in this document, “Deloitte” means Deloitte Consulting LLP, a subsidiary of Deloitte LLP. Please see www.deloitte.com/us/about for a detailed description of the legal structure of Deloitte USA LLP, Deloitte LLP and their respective subsidiaries. Certain services may not be available to attest clients under the rules and regulations of public accounting.

Copyright © 2025 For information contact Deloitte Global.
All rights reserved. Member of Deloitte Touche Tohmatsu Limited

Joule Screenshots

