



SAP Business Unleashed Innovation Day

When you connect everything,
you can achieve anything.



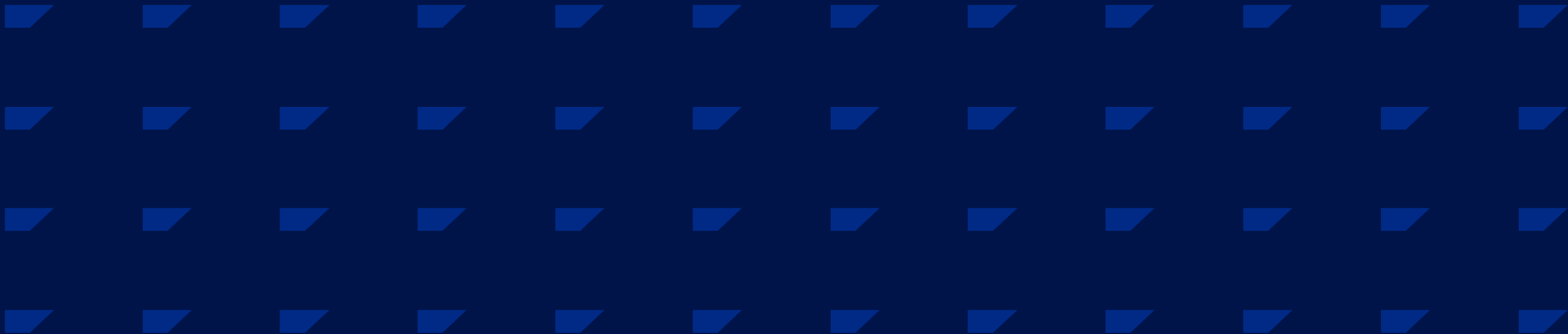
Business Data Fabric - Five Steps to a Business Data Fabric Architecture

Pierre van Rooyen - BTP Domain Advisor

Agenda

- The Value of a Business Data Fabric
- How to Build Your Future on a Business Data Fabric (*the five steps*)
- From data mesh to a Business Data Fabric
- How SAP Business Data Cloud strengthens a Business Data Fabric

The Value of a Business Data Fabric



The driving forces for data management today



Applications, AI, and planning require context from quality, trusted data



Business context and logic, especially metadata, is often removed or incomplete for business data



Gen AI can be next revolution in productivity, but it requires context and quality data

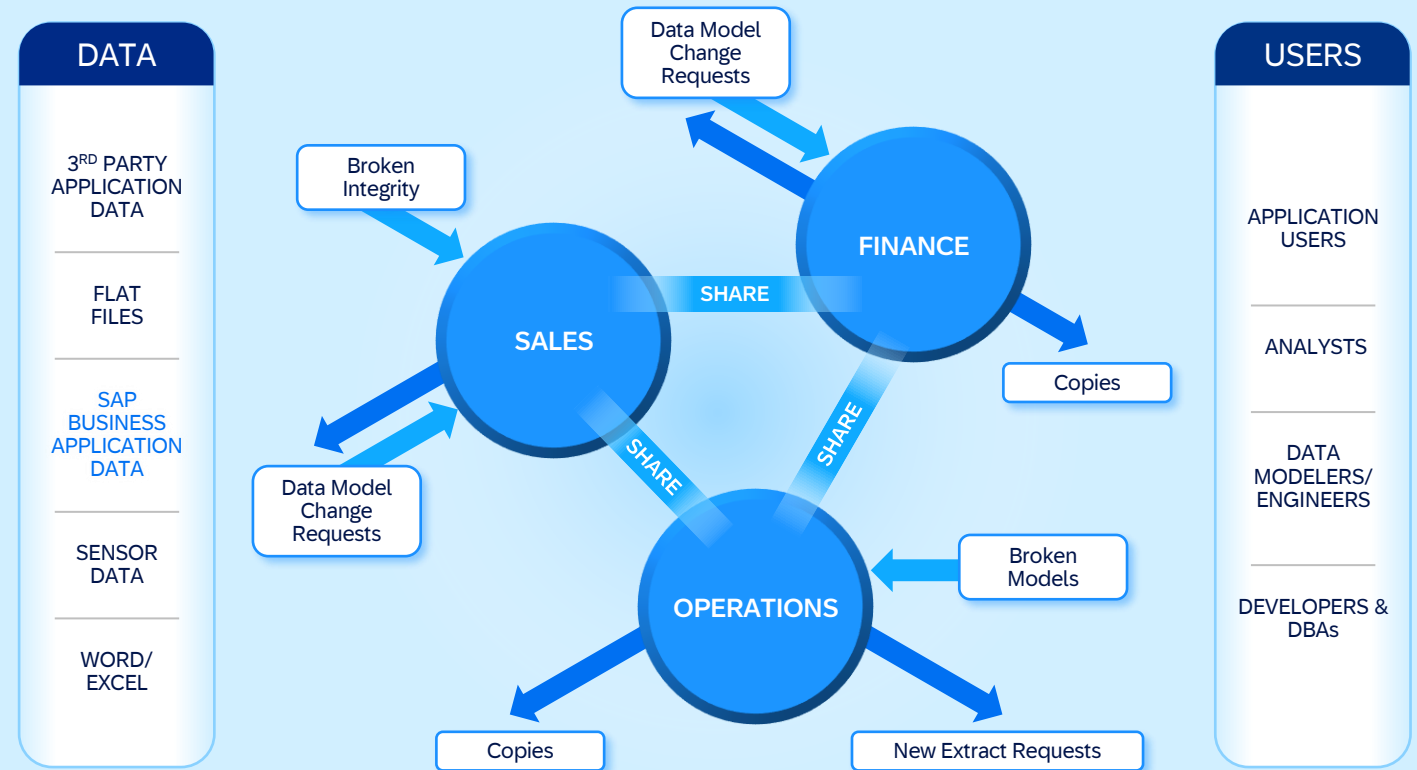


The majority of business users lack data context necessary for data to be useful

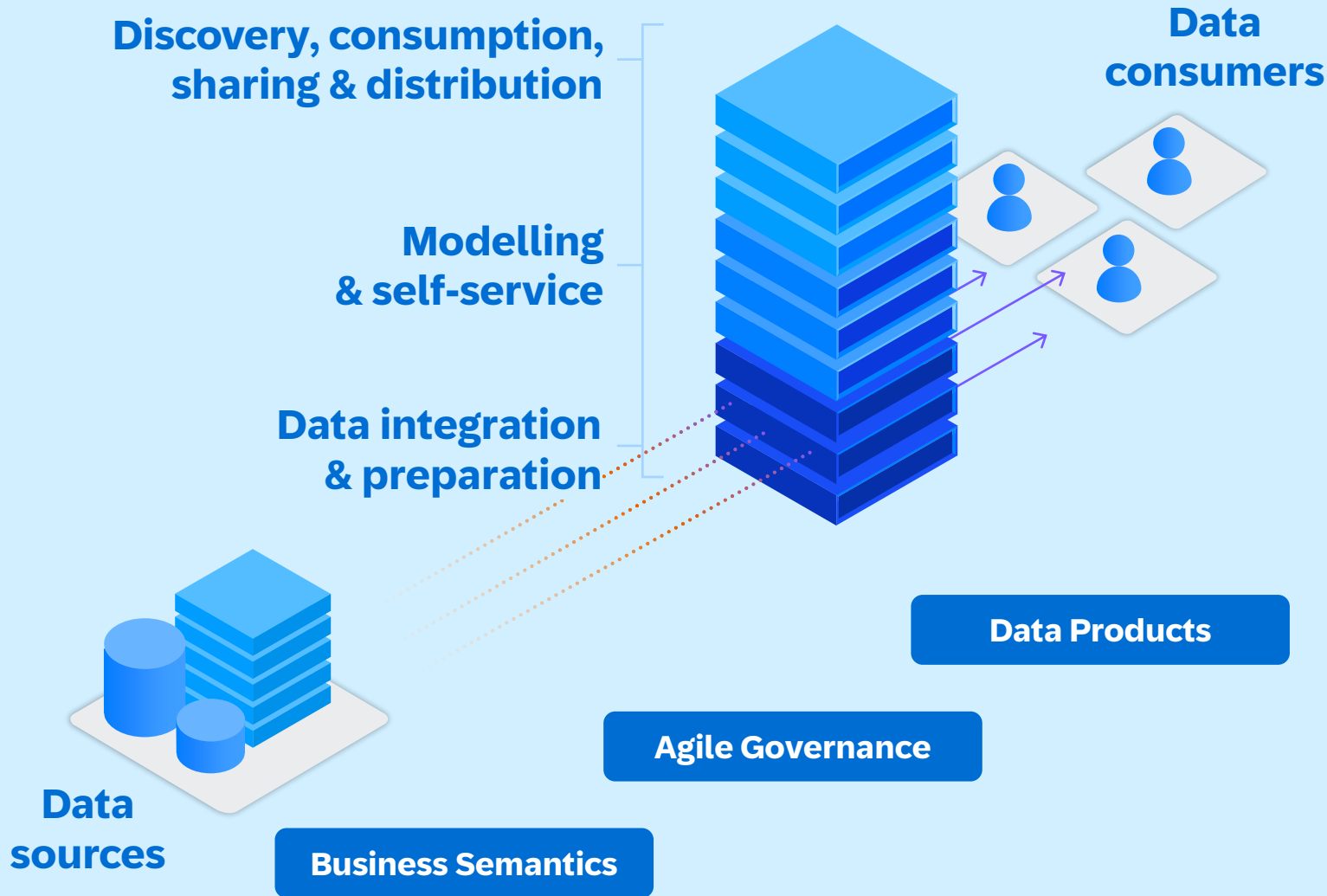
Extracting data from your landscape removes its context and meaning



- Requires extensive time and effort to recreate business logic
- Inhibits the ability to deliver business data for business users
- Widens the divide between transactional and analytical data

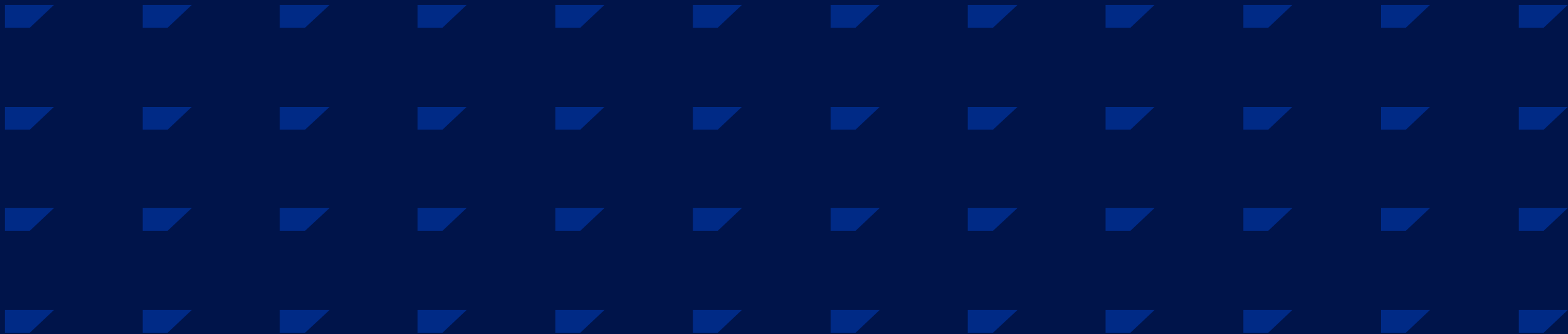


Deliver business data in business terms with a business data fabric



- Deliver business data in business terms to ensure business users can easily understand and use corporate data
- Preserve the context and semantics of data including business descriptions, metadata, and relationships
- Accelerate self-service culture inside and beyond business functions

How to Build Your Future on a Business Data Fabric



5 Step Framework towards a Business Data Fabric



1. Data ingestion:

- The first step is to ensure that all your data, whether it's **structured or unstructured**, can be **easily ingested** into the system.
- A business data fabric, with its **open data ecosystem**, allows for more seamless data ingestion, regardless of the source or the format of the data.

2. Data integration:

- Data from various sources must be integrated and transformed into a **unified format** easily consumed by data users.
- The interoperability of a business data fabric enables data from different sources to be combined and **connected rather than simply moved around**.

3. Data governance:

- With the increasing complexity and volume of data, governance becomes paramount. This includes ensuring **data quality, privacy, and compliance** with various regulations.
- A business data fabric helps ensure effective governance by **maintaining metadata, lineage**, and control measures.

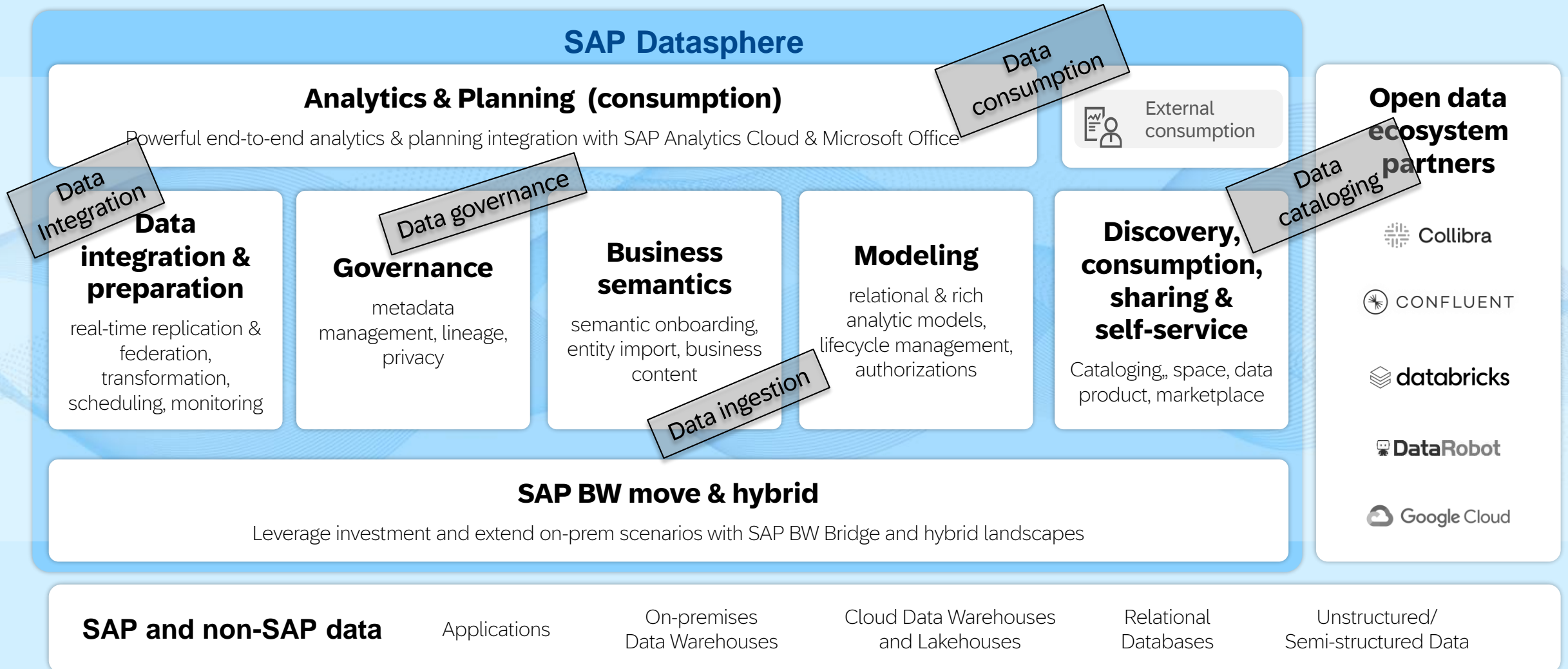
4. Data cataloging:

- This involves creating an **inventory of data assets and their metadata**.
- The catalog serves as a single source of truth for users to find, **understand, and trust** the data they need. It's a critical component of the business data fabric that allows data consumers to understand the business semantics.

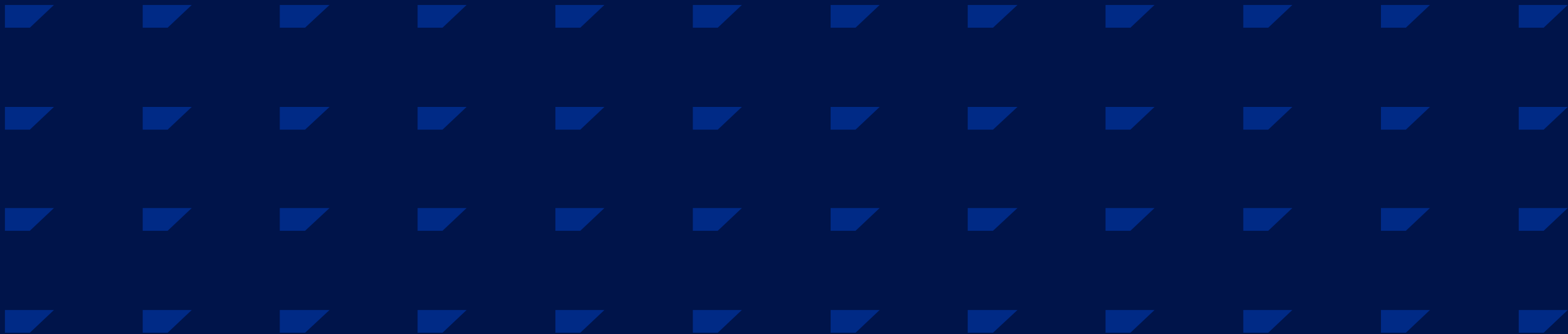
5. Data consumption:

- Finally, it's about delivering the right data in the right format, at the right time, and to the right people.
- The business data fabric supports **data federation**, which enables unified and consistent access to data across diverse sources, reducing data redundancy.
- Data is presented in **business-friendly terms, with contexts**, making it simpler for data consumers to interpret and use the data for their specific use cases.

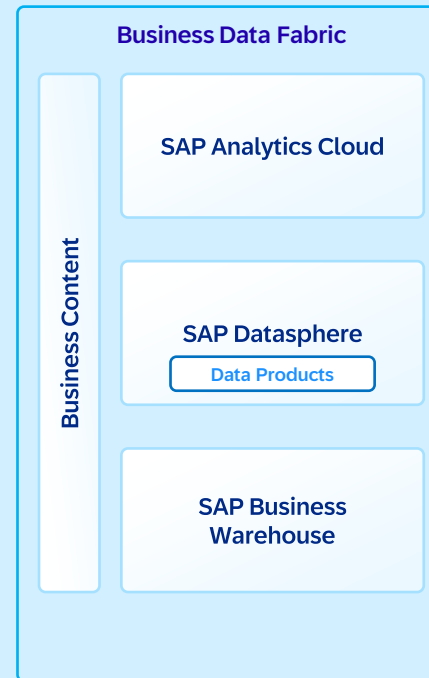
SAP Datasphere is the foundation for a business data fabric architecture



How SAP Business Data Cloud strengthens a Business Data Fabric



Creating additional value to the Business Data Fabric by extending the services

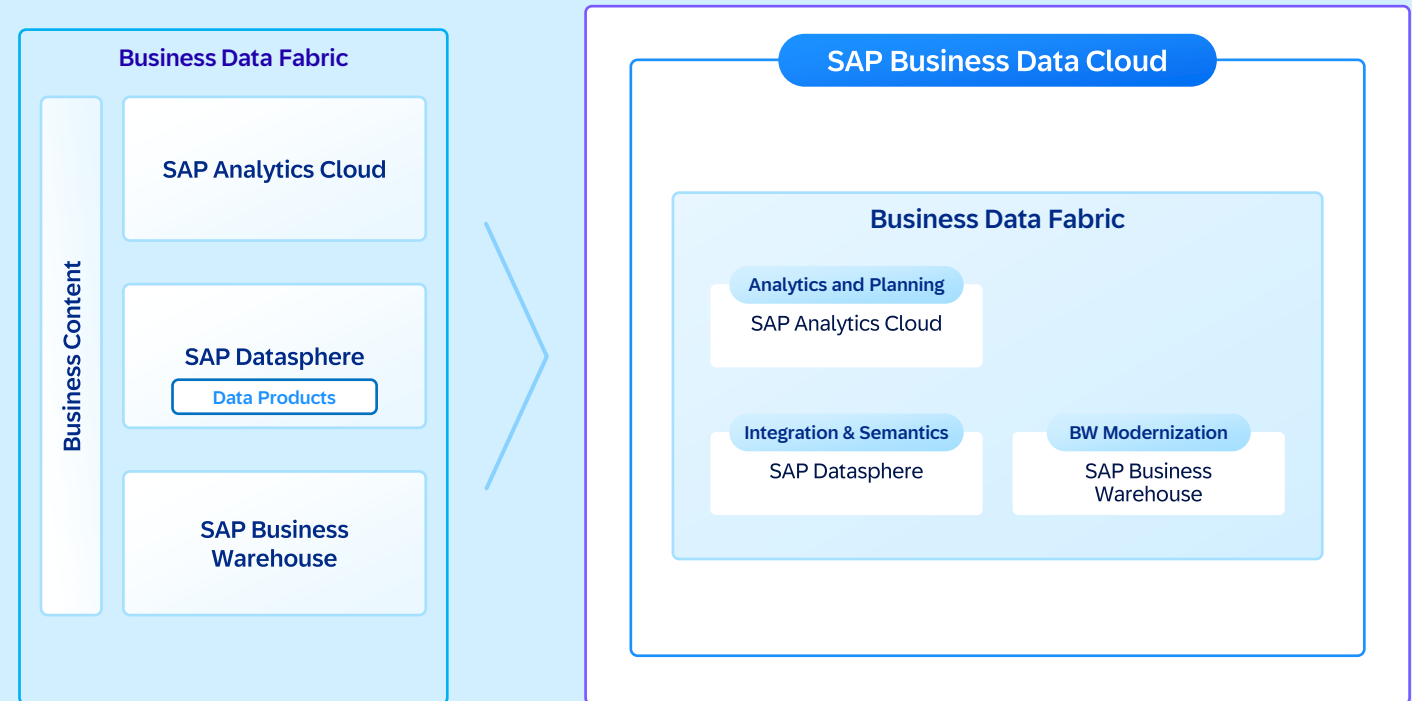


Creating additional value to the Business Data Fabric by extending the services



Enhance the use cases to create additional business value

- **Pivotal evolution of the Business Data Fabric**
leveraging existing solutions and investments with SAP Analytics Cloud (for planning), SAP Datasphere and SAP BW or SAP BW/4HANA and its capabilities
- **SAP BW modernization**
take your SAP BW or BW/4HANA investment along and enable custom data products on your BW data

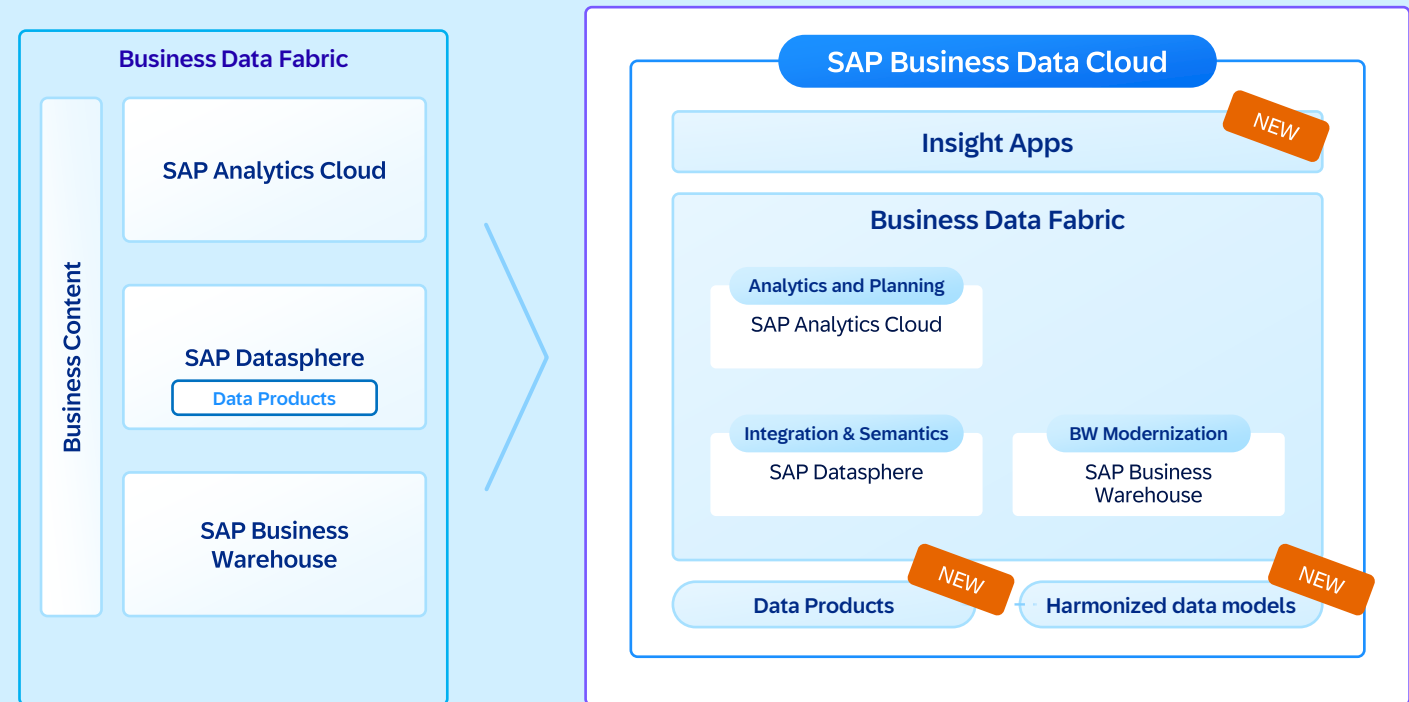


Creating additional value to the Business Data Fabric by extending the services



Enhance the use cases to create additional business value

- **Pivotal evolution of the Business Data Fabric**
leveraging existing solutions and investments with SAP Analytics Cloud (for planning), SAP Datasphere and SAP BW or SAP BW/4HANA and its capabilities
- **SAP BW modernization**
take your SAP BW or BW/4HANA investment along and enable custom data products on your BW data
- **SAP data products and insight apps**
deliver the next-level business content eliminating the need for manual data integration and modeling while accelerating the process from data to insights

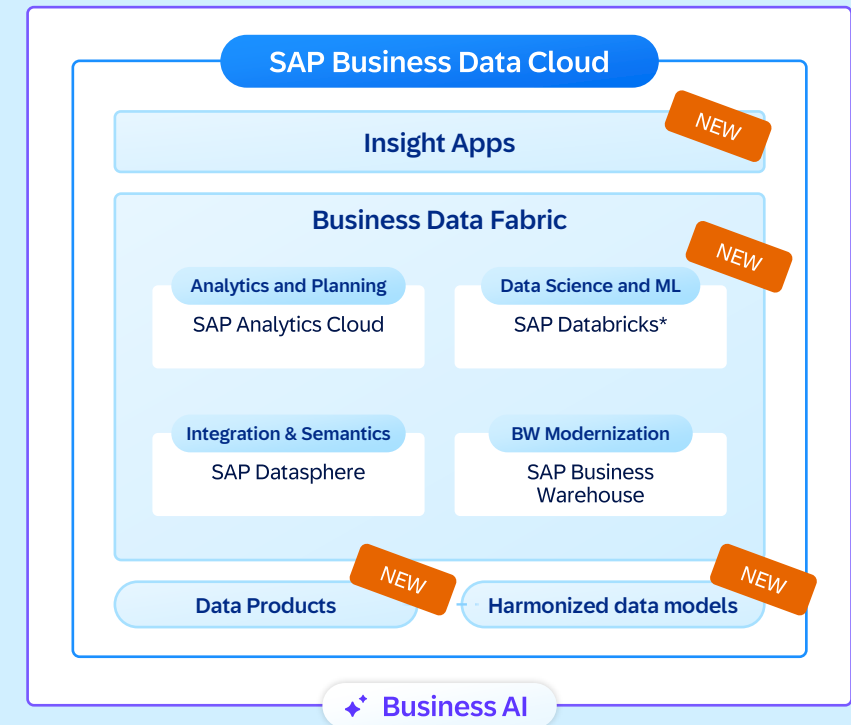
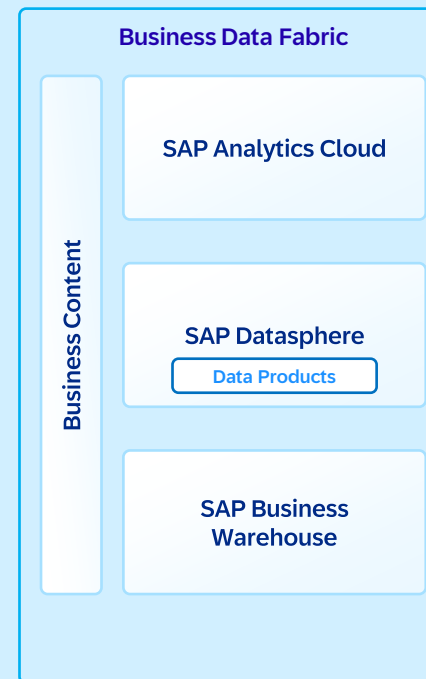


Creating additional value to the Business Data Fabric by extending the services



Enhance the use cases to create additional business value

- **Pivotal evolution of the Business Data Fabric**
leveraging existing solutions and investments with SAP Analytics Cloud (for planning), SAP Datasphere and SAP BW or SAP BW/4HANA and its capabilities
- **SAP BW modernization**
take your SAP BW or BW/4HANA investment along and enable custom data products on your BW data
- **SAP data products and insight apps**
deliver the next-level business content eliminating the need for manual data integration and modeling while accelerating the process from data to insights
- **Data science and ML use cases**
on an integrated platform leveraging SAP Databricks* and object store technology with zero copy delta share
- **Infuse AI with Joule**
unifying data platforms and business applications to establish the foundation for SAP Business AI



*SAP Databricks will be part of GA version

Business data fabric provides comprehensive approach to transforming data management and implementing emerging capabilities



A business data fabric provides the implementation path to experience the key advantages organizations are looking for from a data mesh, **while preserving critical business context and metadata semantics**

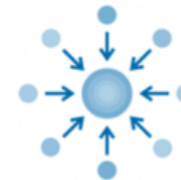
Core Principles of a Data Mesh



Domain ownership



Data as a product



Self-service access



Federated governance

Business data fabric provides comprehensive approach to transforming data management and implementing emerging capabilities



A business data fabric provides the implementation path to experience the key advantages organizations are looking for from a data mesh, **while preserving critical business context and metadata semantics**

Evolving Data Management with a Business Data Fabric



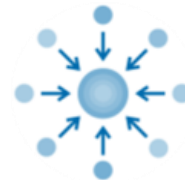
Domain ownership



Data as a product



Business semantics



Self-service access



Federated governance



Intelligent data discovery

Business data fabric provides comprehensive approach to transforming data management and implementing emerging capabilities

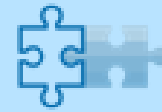


A business data fabric provides the implementation path to experience the key advantages organizations are looking for from a data mesh, **while preserving critical business context and metadata semantics**

Evolving Data Management with a Business Data Fabric



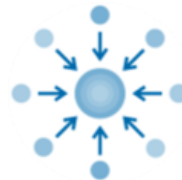
Domain ownership



Data as a product



Business semantics



Self-service access

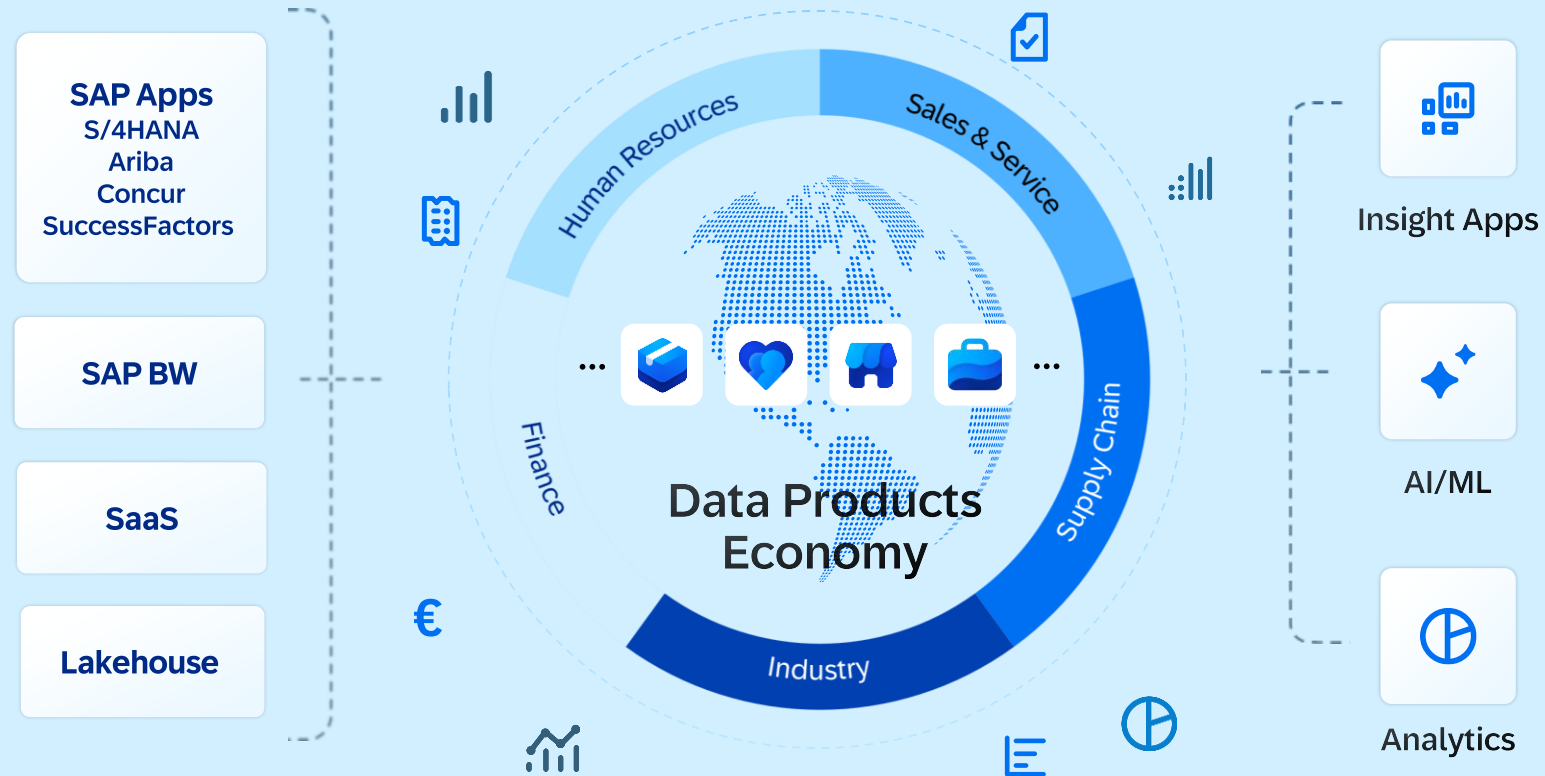


Federated governance



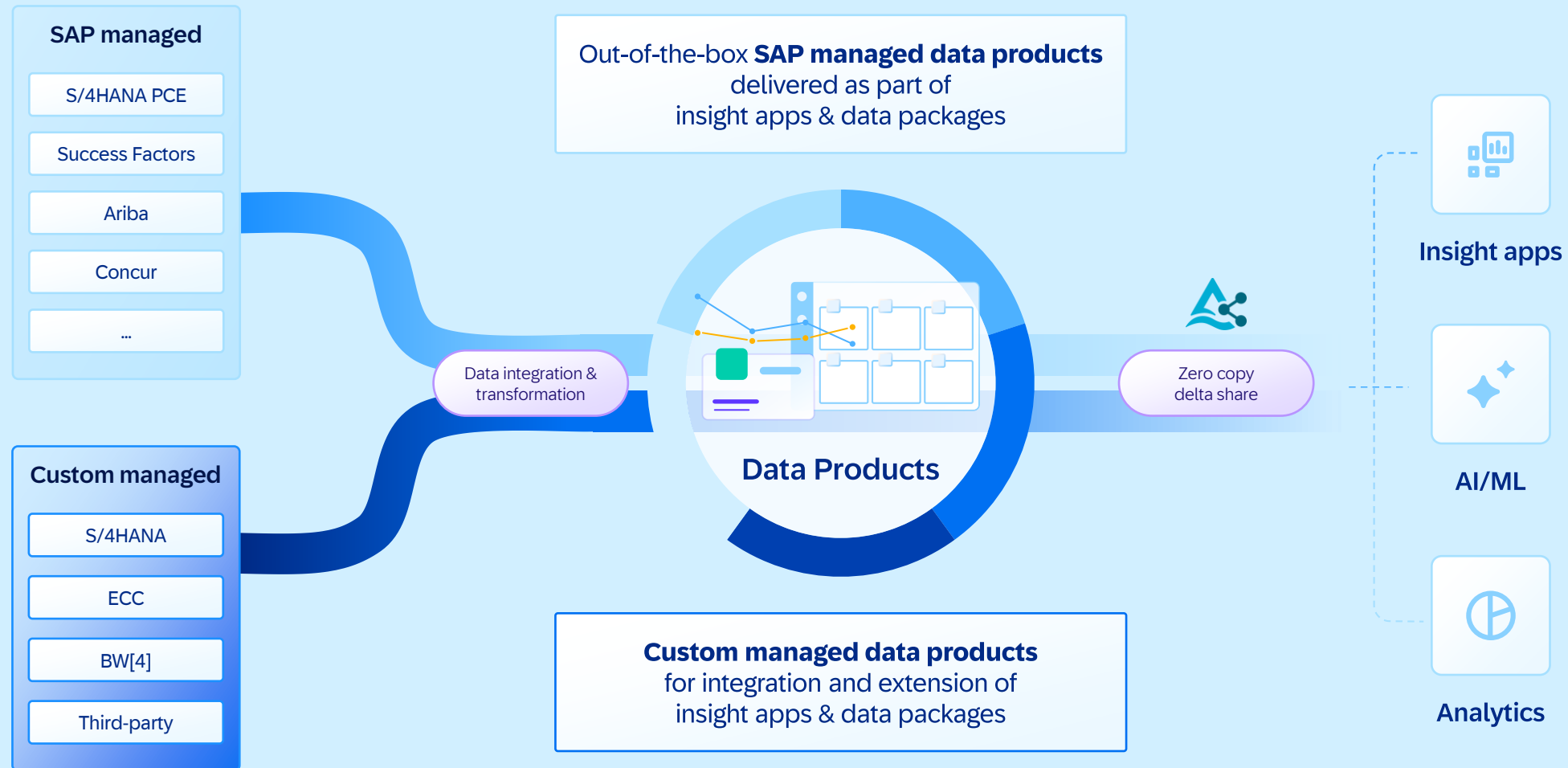
Intelligent data discovery

From a Data Fabric to a New Data Product Economy



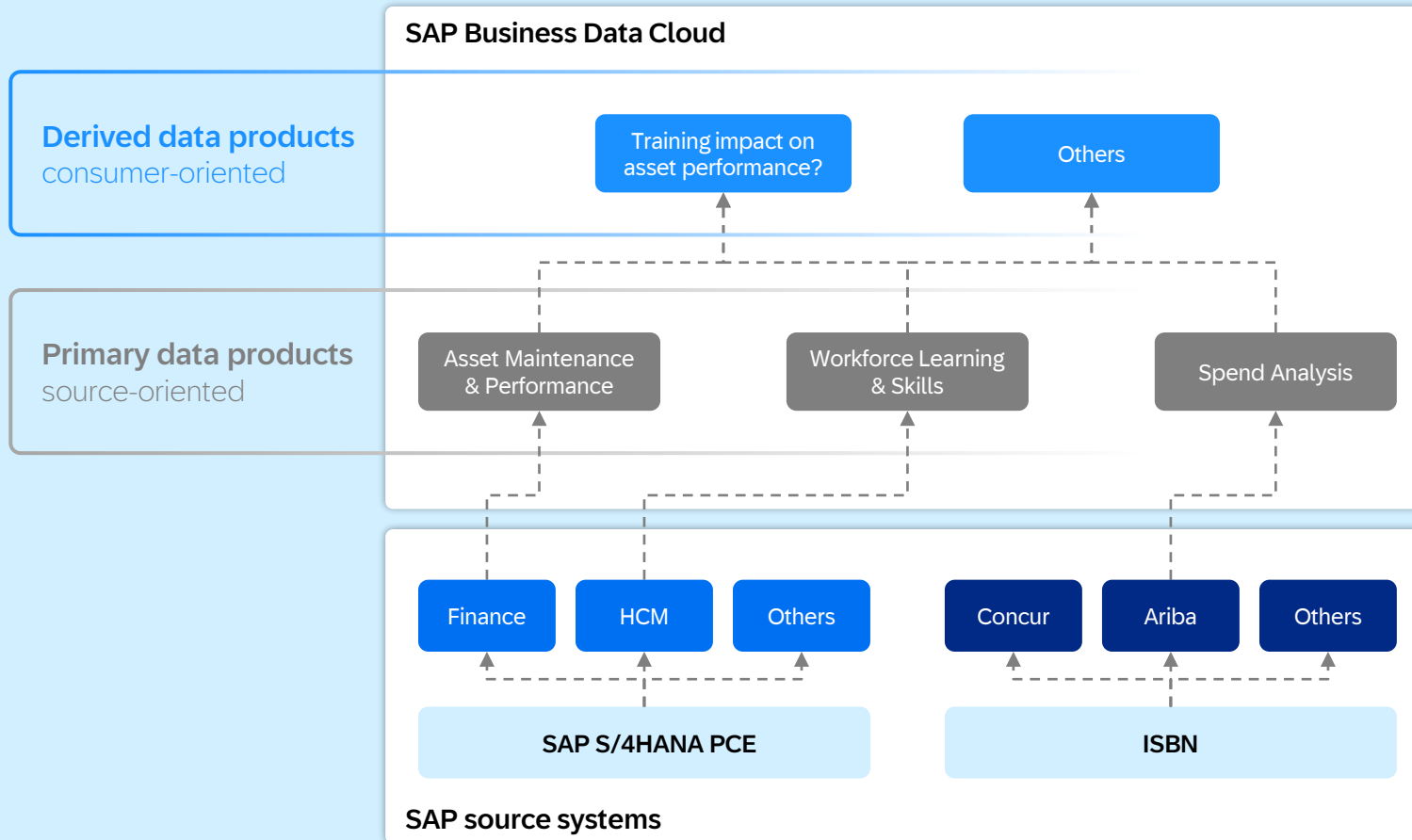
Customers and partners can generate unique data products, AI models, and insights apps and fully participate in SAP's data product economy

Establish a Data Product Economy to serve multiple use cases



Organize SAP data through data products

A service to minimize time to insight

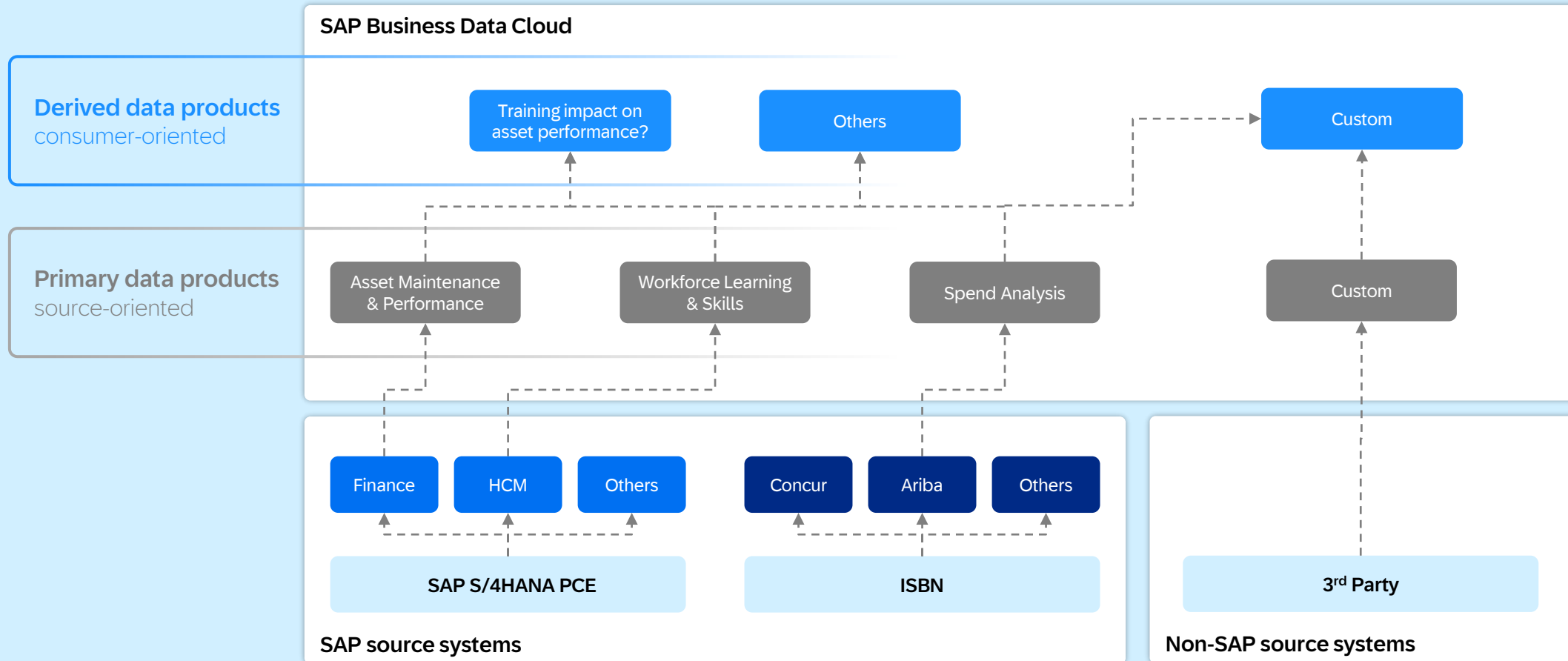


Primary and derived data products

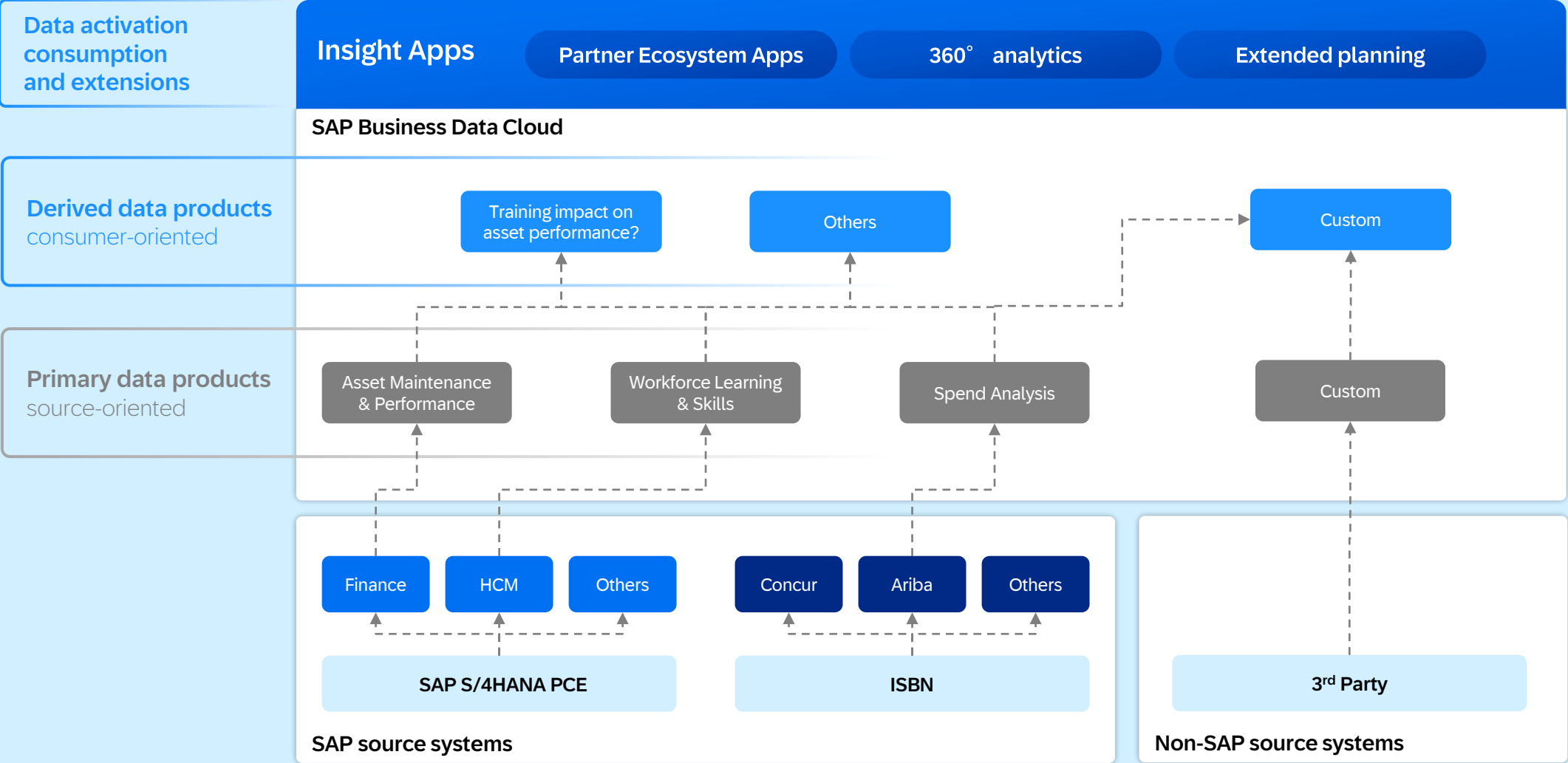
A **derived data product** is curated by SAP and derived from other data set(s). They deliver value-add and are based on other data products or APIs.

A **primary data product** is directly provided from applications and is not based on other data products representing the original data from a source application.

Extending the Business Data Fabric with non-SAP data



Extending the Business Data Fabric with non-SAP data



Business data fabric provides comprehensive approach to transforming data management and implementing emerging capabilities



A business data fabric provides the implementation path to experience the key advantages organizations are looking for from a data mesh, **while preserving critical business context and metadata semantics**

Evolving Data Management with a Business Data Fabric



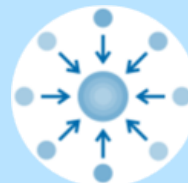
Domain ownership



Data as a product



Business semantics



Self-service access

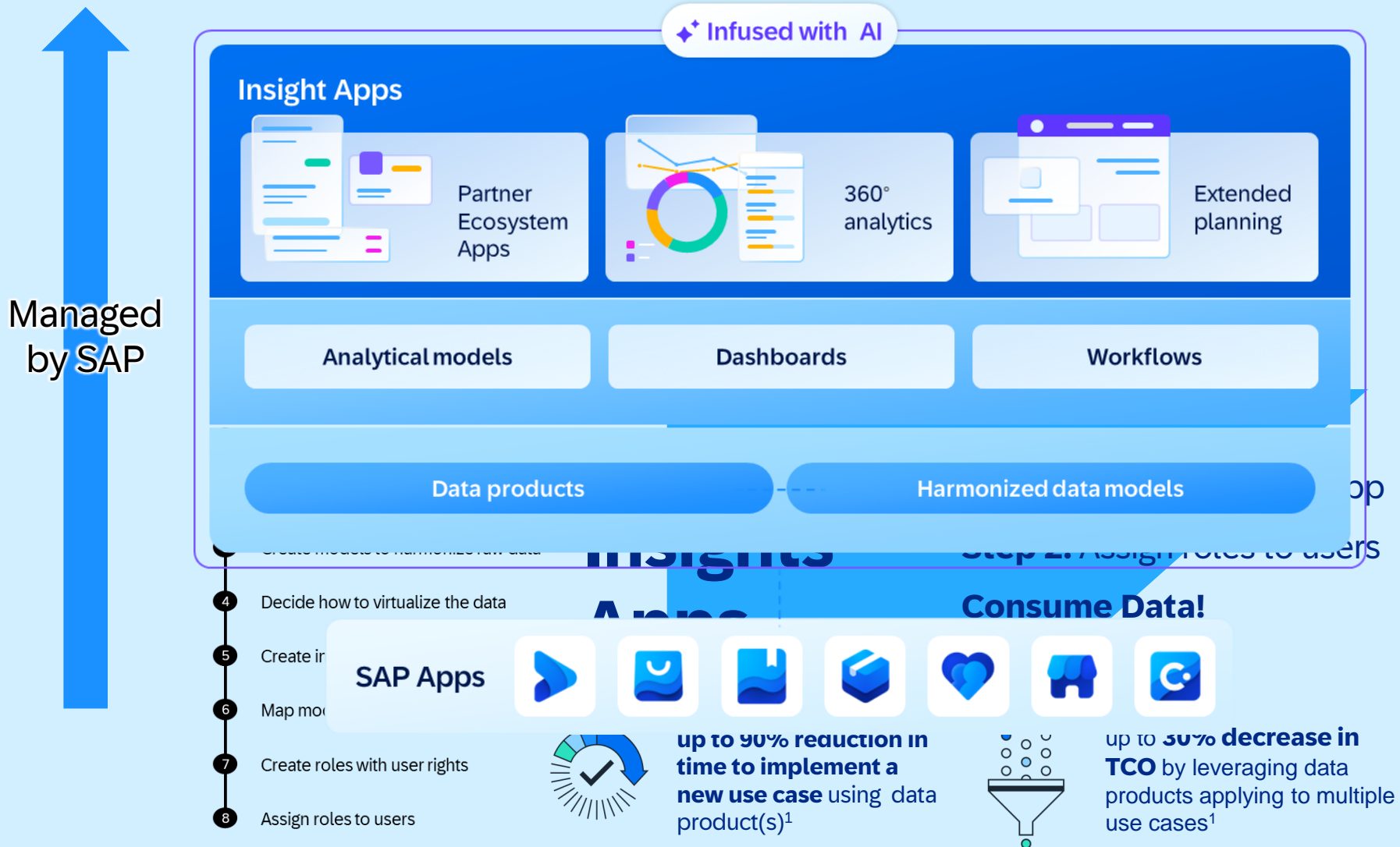


Federated governance



Intelligent data discovery

Insights Apps leverage curated data products for the data-driven enterprise



Source: 1. A better way to put data to work, McKinsey, Harvard Business Review



Flip a Switch for Analytics

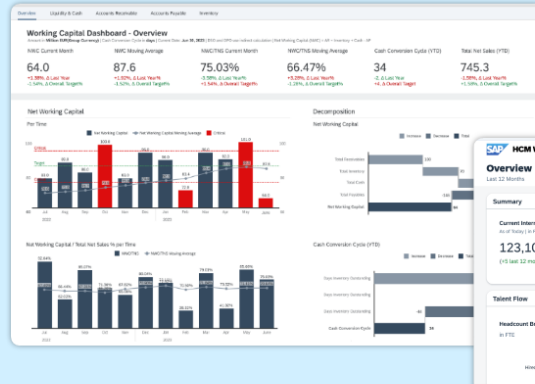
Managed by SAP

- Data Extraction from SAP Applications
- Harmonized Data Model
- BI Dashboards and Planning Apps
- Infused with AI

Insight Apps

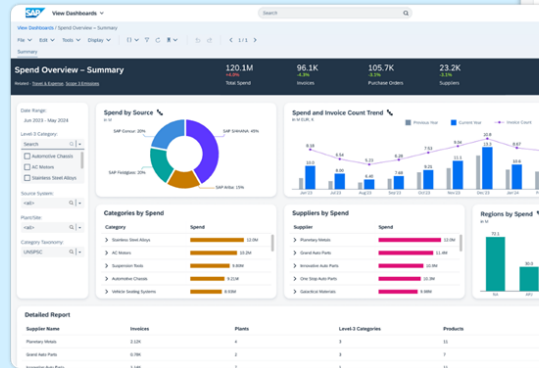
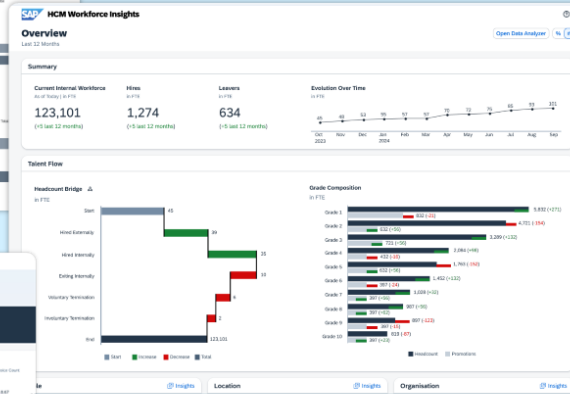
Core Enterprise Analytics

E.g. **Working Capital** - Enabling companies to effectively make use of current assets and maintain sufficient cash flow to meet short-term goals and obligations.



People Analytics

Enabling customers to understand their workforce composition and organizational structure.



Spend Analytics

SAP Spend Control Tower is SAP's new, next-generation analytics solution designed to give companies faster, better visibility into enterprise-wide spend data



CIO

Core Enterprise Analytics

- Working Capital
- Finance Foundation
- Sales Analysis
- Enterprise Asset Mgt
- Service Analysis
- Solution Business



CFO

People Analytics

- Employee Central
- Learning
- Skills
- Recruiting
- Talent
- ++



CHRO

Spend Analytics

- Spend Control Tower
- Procurement analysis
- Supplier risk analysis
- Contract Management
- Consolidated Spend analysis



CRO

Customer Analytics

- Customer Data Platform
- Customer Management
- Sales planning & analysis
- Stock forecasting
- ++



COO

Supply Chain Analytics

- Order Management
- Inventory and Costing
- Procurement
- Manufacturing
- ++

Partner Ecosystem Apps

accenture

Capgemini

DataRobot

EY

Spendscape by McKinsey

pwc



Flip a Switch for Analytics


Insight apps provide:

- LoB users with ready-to-use insights, to improve decision making and take action on critical business signals.
- Built by SAP utilizing decades of industry and domain experience.

Managed by SAP

Insight Apps - Working Capital

Manage by SAP

**Working Capital**

Application

Available

Overview

Documentation

Category:

Finance

Version:

1.0.0

Details

Data Products (30)

Name	Description
BillableControl	The billable co
BillingProcessDocument	A document cr
BusinessArea	Organizational
CashFlow	The Cash Flow
Company	A Company is i
CompanyCode	A company coc
ConsolidationChartOfAccounts	A consolidation
ConsolidationSubitem	A Consolidation
ConsolidationUnit	The smallest e
ControllingArea	A Controlling A
ControllingObject	Identifier of the
CostAnalysisResource	A cost analysis

CostCenter	A cost center is an organization...	12	1.0.0	
CostCenterActivityType	A cost center activity type is a...	43	1.0.0	
Country	A country is a coded representa...	32	1.0.0	
Customer	A business partner to whom ma...	47	1.0.0	
FinancialPlanningEntryItem	Product	A product is a good that contrib...	28	1.0.0
FiscalYear	ProfitCenter	A profit center is an organizatio...	33	1.0.0
FunctionalArea	Project	A project is a business operatio...	63	1.0.0
GeneralLedgerAccount	PurchasingOrganization	An organizational unit in Logisti...	42	1.0.0
HANACurrency	SalesDocument	A document that represents a b...	17	1.0.0
HouseBank	SalesMasterData	Collection of Sales Master Data	19	1.0.0
InternalOrder	SalesTaxType	A Sales Tax Type is a coded rep...	36	1.0.0
JournalEntryCodes	Segment	Division of a company for which...	31	1.0.0
JournalEntryHeader	ServiceDocument	A service document is a docum...	28	1.0.0
JournalEntryItemCodes	ShippingPoint	A shipping point is a coded rep...	30	1.0.0
Ledger	StorageLocation	A storage location is a coded re...	19	1.0.0
OperatingConcern	Supplier	A business partner who provide...	17	1.0.0
OperationalAccountingDocument	SupplierConfirmation	Reference Document Type is a...	27	1.0.0
PaymentMethod				
PaymentTerms	Payment terms is a coded repr...	62	1.0.0	
Plant	A plant is an organizational unit...	27	1.0.0	



analytics

e:

y-to-use

decision

ion on

nals.

and

Business data fabric provides comprehensive approach to transforming data management and implementing emerging capabilities



A business data fabric provides the implementation path to experience the key advantages organizations are looking for from a data mesh, **while preserving critical business context and metadata semantics**

Evolving Data Management with a Business Data Fabric



Domain ownership



Data as a product



Business semantics



Self-service access



Federated governance



Intelligent data discovery

Unlock the full potential of your data with SAP Databricks

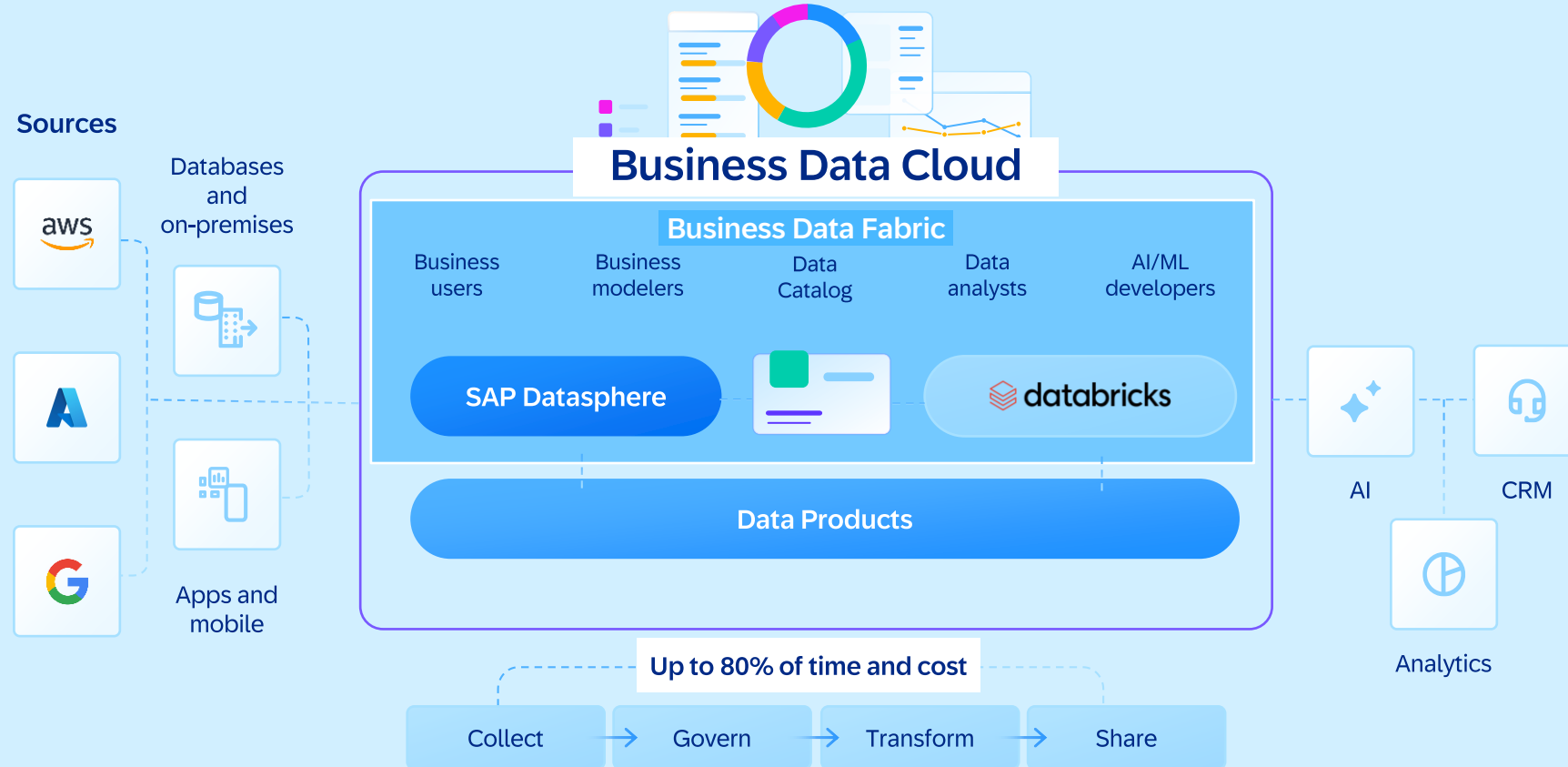


Recognized as a **market leader** in unified data and AI/ML platforms

Fully managed and embedded within SAP Business Data Cloud

Brings industry leading data engineering, data science, advanced analytics and SQL serverless capabilities to SAP's Business Data Fabric

Optimized to work with SAP data products with **zero-copy data exchange**



Business AI

Insight Apps

- Partner Ecosystem Apps
- 360° analytics
- Extended planning

Business Data Fabric

Business semantics

Analytics and planning

BW Modernization

Data engineering and ML/AI

- Notebooks
- SQL Analytics
- Mosaic AI
- Unity Catalog
- Delta Share

databricks

Data products --- **Harmonized data models**

SAP S/4HANA Interface:

```

sapdata_operationalaccounting
File Edit View Run Help Last edit: 08.10.2023 10:00:00
+ New
Workspace
Catalog
Workflows
Compute
Recent
From pyqark-ml-regressio
From pyqark-ml-feature
From pyqark-ml-estimat
From pyqark-ml-imput-1
From databricks-Feature
From databricks-Feature
    
```

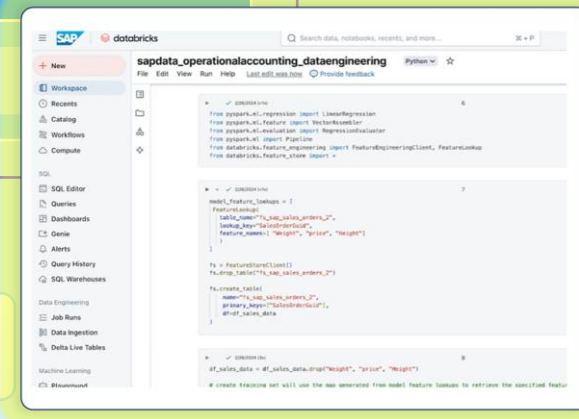
- Access to all data products - trusted, up-to-date SAP data
- One data catalog allows easy access to find all relevant data quickly
- SAP data easily accessible via delta share – no copying of data
- Allows data science roles to work with **familiar tools**
- Easy sharing of AI/ML insights



Hybrid
On-premises

SaaS
Edge

Cloud-native



*Databricks will be part of GA version



**Now let take a look at what
this all adds up to**

**From trusted data to
meaningful AI**



An

Thank you



Pierre van Rooyen

Domain Advisor - Business Technology Platform

pierre.van.rooyen@sap.com

M +61 466 357 020

O +61 3 9862-7534



Pierre van Rooyen

Domain Advisor - SAP Business
Technology Platform



Capabilities gained using SAP Databricks



SAP Databricks

Unify data with zero copies

Leverage delta sharing to connect and blend data without the need for or complex ETL or data copies

Delta Share

Deliver trusted data products

Access curated SAP managed data products
Build derived data products and publish to catalog

Unity Catalog

Develop with pro-code tooling

Develop pro-code data engineering & custom AI/ML.
Write spark pipelines to blend SAP and 3rd party data

Databricks Notebook

Analyze data at scale, on-demand

Analyze data at scale on-demand with SQL, for faster, data-driven decision-making

Databricks SQL

Build custom AI and ML

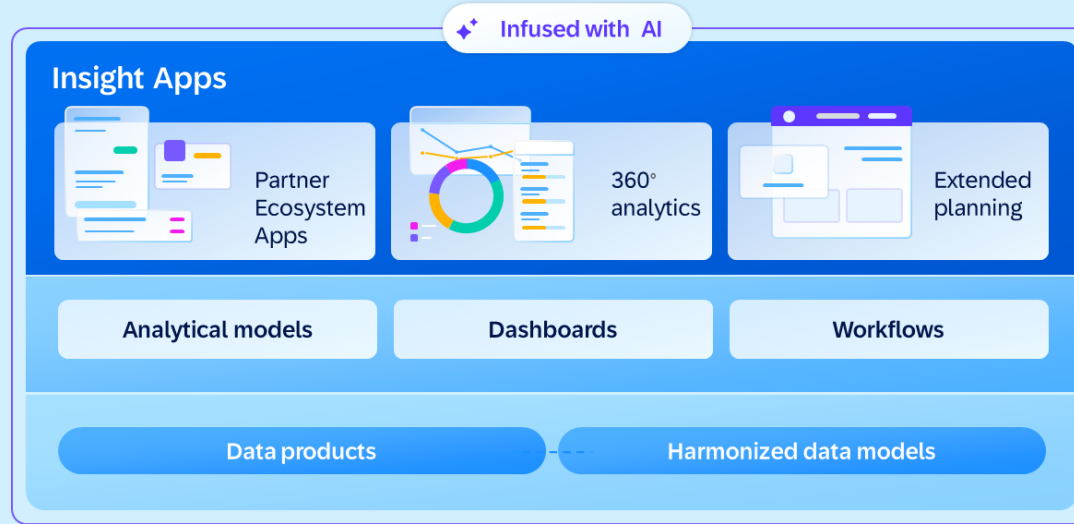
Build governed and secure custom AI/ML solutions, leveraging trusted, reliable, AI-ready data

Data Science & Mosaic AI

Simplify and fully integrate your data landscape

Insights Apps leverage curated data products for the data-driven enterprise

Managed
by SAP



Without Insight Apps

- 1 Define required measures
- 2 Look for existing data
- 3 Create models to harmonize raw data
- 4 Decide how to virtualize the data
- 5 Create interactive dashboard
- 6 Map models to dashboard
- 7 Create roles with user rights
- 8 Assign roles to users

With Insights Apps

Step 1: Install an Insight App

Step 2: Assign roles to users

Consume Data!



up to **90% reduction in time to implement a new use case** using data product(s)¹



up to **30% decrease in TCO** by leveraging data products applying to multiple use cases¹

Source: 1. A better way to put data to work, McKinsey, Harvard Business Review



Flip a Switch for Analytics

Managed by SAP

- Data Extraction from SAP Applications
- Harmonized Data Model
- BI Dashboards and Planning Apps
- Infused with AI

Insights Apps leverage curated data products for the data-driven enterprise

Without Insight Apps

- 1 Define required measures
- 2 Look for existing data
- 3 Create models to harmonize raw data
- 4 Decide how to virtualize the data
- 5 Create interactive dashboard
- 6 Map models to dashboard
- 7 Create roles with user rights
- 8 Assign roles to users

With Insights Apps

Step 1: Install an Insight App

Step 2: Assign roles to users

Consume Data!



up to 90% reduction in time to implement a new use case using data product(s)¹



up to 30% decrease in TCO by leveraging data products applying to multiple use cases¹



Data needs context for authoritative decision-making

Innovation has happened in silos

Data, especially metadata, has been removed from its context

There's been a fundamental error—focusing solely on technology rather than the data

