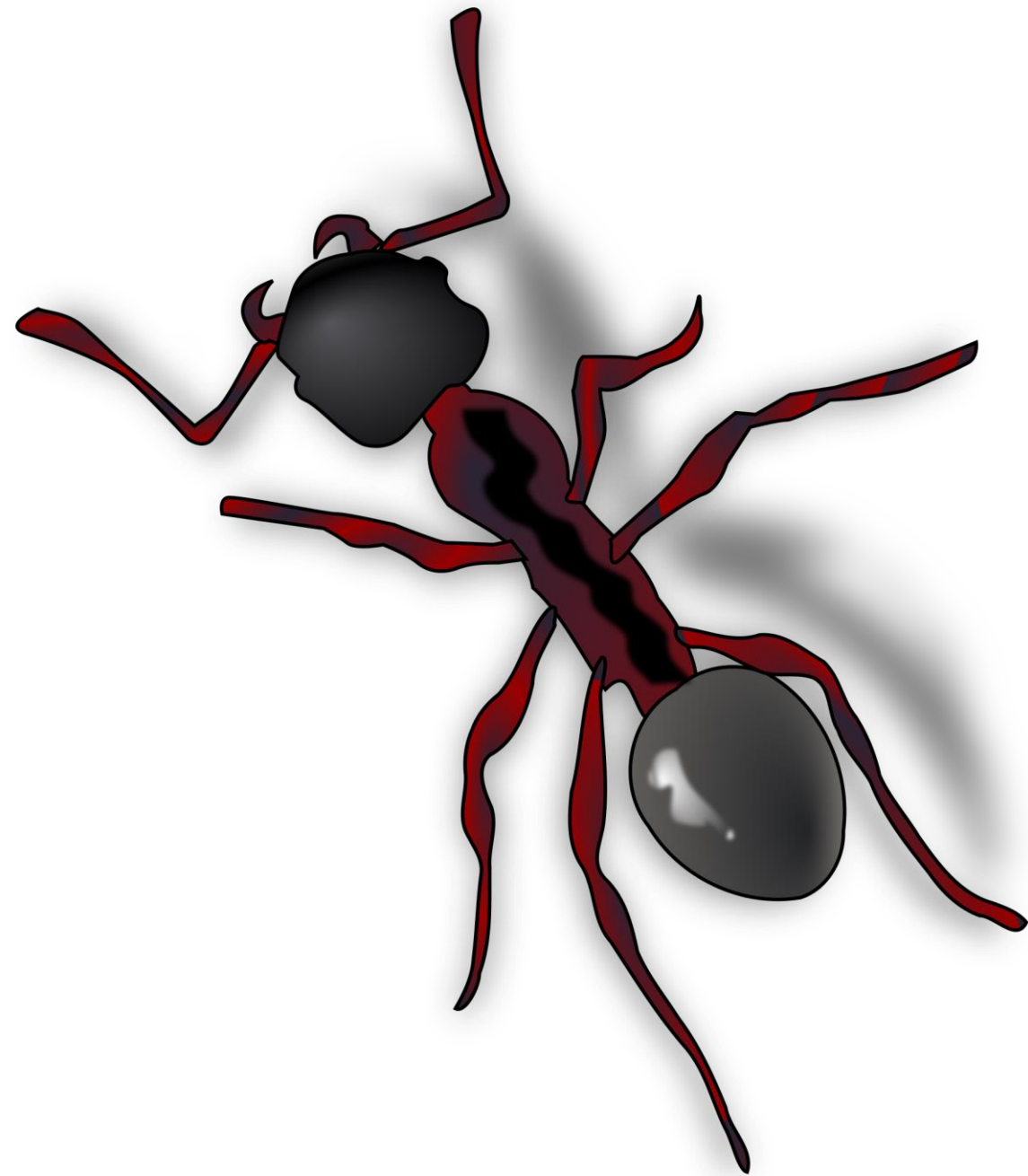


*Concerto per tamburi e farfalle*



DANIEL FURNICĂ





---

RedPoint®

2024

RedPoint®  
technologies



---

**RedPoint<sup>®</sup>**

**Mai puternici**

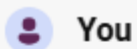
**ÎMPREUNĂ**

**RedPoint<sup>®</sup>**  
technologies









You

ce este un building block sap s/4hana public cloud



Copilot

În SAP S/4HANA Public Cloud, un “building block” (bloc de construcție) se referă la elemente funcționale specifice, denumite și “scope items” (elemente de domeniu) sau “solution processes” (processe de soluție). Acestea sunt componente predefinite care acoperă diverse procese de afaceri și funcționalități necesare pentru implementarea și operarea soluției SAP S/4HANA Cloud Public Edition <sup>1</sup>.

De exemplu, un building block poate include procese pentru gestionarea contractelor de servicii, gestionarea reparațiilor interne, servicii de teren și servicii recurente. Aceste blocuri sunt concepute pentru a sprijini procesele de bază ale afacerii și sunt configurate pentru a respecta cele mai bune practici din industrie <sup>1</sup>.

Dacă ai nevoie de mai multe detalii sau ai alte întrebări, sunt aici să te ajut!

Learn more <sup>1</sup> [learning.sap.com](https://learning.sap.com)



1 of 30 responses

AI-generated content may be incorrect

## Domestic Customer (Edit access)



(0/1) ENTERPRISE PORTFOLIO AND PROJECT MANAGEMENT    (0/5) PRODUCT COMPLIANCE    (0/2) PRODUCT ENGINEERING    **(0/17) PRODUCT LIFECYCLE MANAGEMENT**    (0/4) PROJECT CONTROL

### SCOPE SELECTION

- 2% **Sourcing and Procurement**  
1/60 in scope
- 0% **Asset Management**  
0/3 in scope
- 0% **R&D / Engineering**  
0/29 in scope
- 0% **Manufacturing**  
0/47 in scope
- 0% **Supply Chain**  
0/39 in scope
- 0% **Sales**  
0/46 in scope
- 0% **Service**  
0/0 in scope
- 0% **Professional Services**  
0/15 in scope
- 0% **Human Resources**  
0/5 in scope
- 0% **Finance**  
0/141 in scope
- 0% **Database and Data Mngt.**  
0/31 in scope
- 0% **App. Platf. and Infrastr.**  
0/5 in scope

**Additional Requirements**  
Capture your requirements

<p><b>Handover Engineering Product Structures</b> 3NE</p> <p>This scope item enables you to hand over a bill of materials or a product structure from a given source usage type (for...</p> <p><span>0</span> Questions    <span>0</span> Notes</p> <p> </p>	<p><b>Handover of Product Information to SAP Asset Intelligence Network</b> 2WK</p> <p>This business process enables fast creation of the SAP Asset Intelligence Network model based on available...</p> <p><span>0</span> Questions    <span>0</span> Notes</p> <p> </p>	<p><b>Intelligent Content Processing for Document Classification</b> 2YC</p> <p>Intelligent Content Processing for Document classification is an automation of the Documents to Classification proce...</p> <p><span>0</span> Questions    <span>0</span> Notes</p> <p> </p>	<p><b>Manage Documents</b> 22P</p> <p>This scope item provides an intuitive way to search, create, and edit documents associated to a business object, such as...</p> <p><span>0</span> Questions    <span>0</span> Notes</p> <p></p>
<p><b>Recipe Handover to Production - Bill of Material</b> 1QG</p> <p>This scope item covers the synchronization of development results with production by synchronizing the...</p> <p><span>0</span> Questions    <span>0</span> Notes</p> <p> </p>	<p><b>Requirements Driven Development</b> 2G4</p> <p>Requirements Driven Development enable the user to link requirements to product life-cycle management objects such as...</p> <p><span>0</span> Questions    <span>0</span> Notes</p> <p> </p>	<p><b>Set up Configurable Bill of Material using Variant Configuration</b> 22T</p> <p>Advanced variant configuration enables efficient modeling of your configurable product model with a configurable BOM.</p> <p><span>0</span> Questions    <span>0</span> Notes</p> <p> </p>	<p><b>Software Compatibility Management</b> 2G5</p> <p>Software Compatibility Management facilitates the check of compatibility constraints between the software and th...</p> <p><span>0</span> Questions    <span>0</span> Notes</p> <p></p>
<p><b>Specification Management for Recipes</b> 1QA</p>			

**Select** the business priorities that are applicable for your company. Each business area has its own related scope items which are grouped per area

Some scope items have related icons that refers to additional information about additional licenses needed, integration, machine learning or 2-tier scenarios

## Domestic Customer (Edit access)



(0/4) SUPPLIER MANAGEMENT    (1/5) SOURCING AND CONTRACT MANAGEMENT    (0/5) CENTRAL PROCUREMENT    (0/28) OPERATIONAL PROCUREMENT    (0/15) INVOICE MANAGEMENT    (0/3) PROCUREMENT >

START

Start  
Start your discovery here!

LOCALIZATION & LEGAL ENTITIES

Localization  
Select relevant countries

SCOPE SELECTION

**Sourcing and Procurement**  
1/60 in scope

**Asset Management**  
0/3 in scope

**R&D / Engineering**  
0/29 in scope

**Manufacturing**  
0/47 in scope

**Supply Chain**  
0/39 in scope

**Sales**  
0/46 in scope

**Service**  
0/0 in scope

**Professional Services**  
0/15 in scope

**Human Resources**  
0/5 in scope

**Finance**  
0/141 in scope

**Database and Data Mngt.**  
0/31 in scope



Activity Management in Procurement  
**19C**

This scope item supports you when collaborating with internal stakeholders on strategic topics, for example, supplier...

Questions    Notes



Supplier Delivery Prediction  
**3FY**

With this scope item, you can predict the supplier delivery delay to avoid delaying raw material availability or production...

Questions    Notes



Supplier Classification and Segmentation  
**19E**

This process identifies suppliers that are strategically important and critical to a customers business. It enables the...

Questions    Notes



Supplier Evaluation and Performance Monitoring  
**SL4**

This scope item helps you, as a category manager, to determine a supplier's performance. The scope item does not...

Questions    Notes



### (1/5) SOURCING AND CONTRACT MANAGEMENT



Blockchain-Verified RFQ Processing  
**3DT**

Increase transparency and trust in the RFQ Process

Questions    Notes



SAP S/4HANA for Legal Content  
**1XV**

SAP S/4HANA Cloud for legal content is an application that enables digitization and management of all legal content (for...

Questions    Notes



Purchase Contract  
**BMD**

This scope item describes the use of contracts in procure...  
Contracts are agree...

Questions

Priority: **Medium**

Phase: **First**



Request for Price  
**1XF**

Questions    Notes



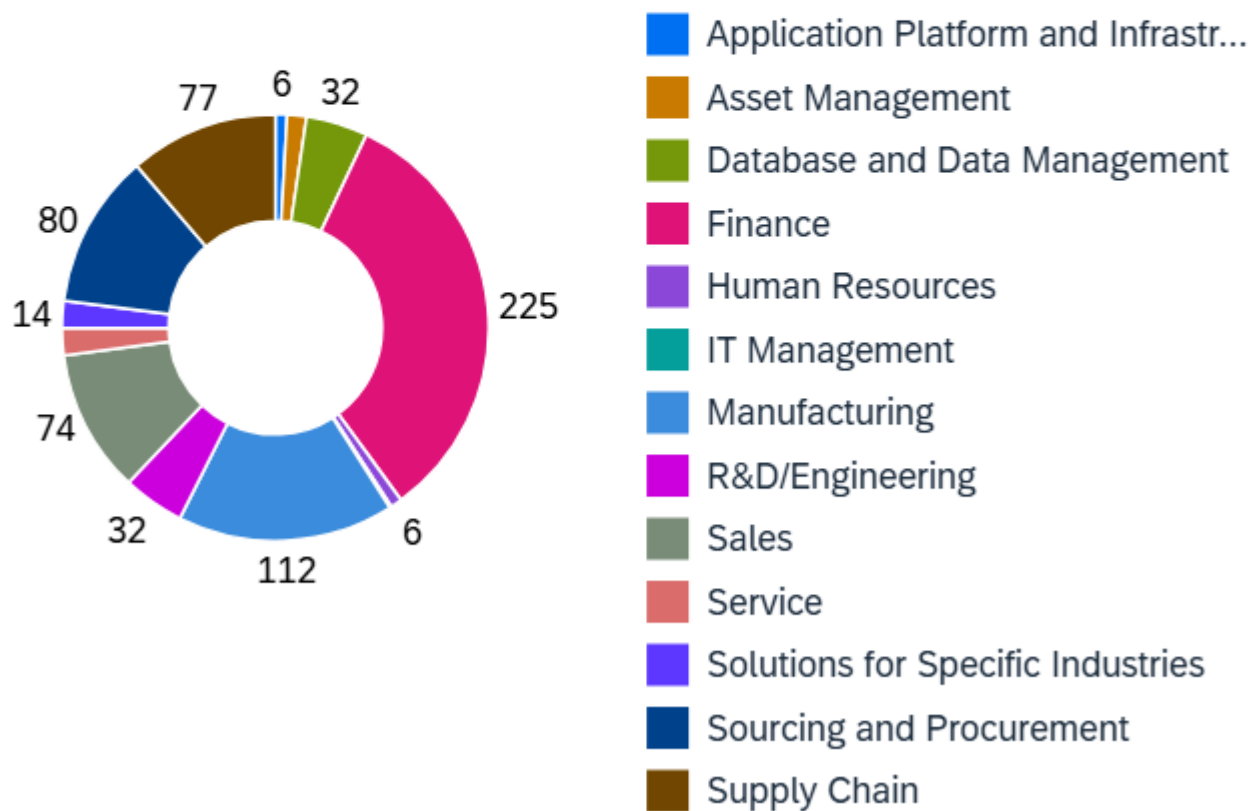
Select the scope items that are applicable for your company.

The percentage on the left of the screen indicates the number of selected scope items in comparison with the total for this particular business area.

# SAP S/4HANA Cloud Public Edition

Romania

## Solution Processes by Line of Business: SAP S/4HANA Cloud Public Edition 2408



# SAP Activate for SAP S/4HANA Cloud Public Edition (3-system landscape)

	Discover	Prepare	Explore	Realize	Deploy	Run
<b>Project Mgmt.</b>		Getting Started & Onboarding Project Initiation & Governance Project Standards & Kick-off	Execution / Monitoring of Project			
<b>Customer Team Enablement</b>	Cloud Trial	Team Self-Enablement & Tool Access	Customer Execution of Standard Processes	Sprint Planning and Execution		
<b>Technical Architecture &amp; Infrastructure</b>		SAP Cloud ALM Initial Access SAP CBC Initial Access Starter System Initial Access		Request/Receive Initial Access to Development System Request/Receive Test System Request/Receive Production System Release & Update Cycles	System Go-Live	Release & Update Cycles Ongoing Operations
<b>Application Design and Configuration</b>	Discovery Assessment Application Value and Scoping	Business Driven Configuration Assessment Solution Scope Fit-to-Standard Analysis Preparation & System Preparation	Fit-to-Standard Analysis Fit-to-Standard Documentation Identity and Access Management	Required Configuration Solution Configuration Identity and Access Configuration in D-System Activate New Scope		Continuous Improvement Release & Update Cycles Activate New Scope
<b>Extensibility</b>			Extension Planning and Design	Solution Extension Development & Deployment		
<b>Integration</b>		Prepare Integration Setup	Integration Planning and Design			Ongoing Operations
<b>Testing</b>			Test Planning	Test Preparation Test Execution		
<b>Data Management</b>		Approach and Plan	Data Load Preparation	Data Migration (Development) Data Migration (Test) Cutover Preparation	Production Cutover	
<b>Operations &amp; Support</b>				Support Operations and Handover Plan	Operations Readiness	Release & Update Cycles Ongoing Operations
<b>Solution Adoption</b>	Cloud Mindset Assessment	Organizational Change Management			Enablement Content Development & Delivery	Value Management
<b>Analytics</b>		Analytics Approach and Plan	Analytics Planning and Design	Analytics Configuration in Development Tenant Analytics Configuration in Test System Analytics Configuration in Production System		

Experiența noastră

Experiența noastră

prin vocea clienților noștri







---

**DIANA BURRA**

*Chief Finance Officer, **NORD ONE***

**CRISTI RUSU**

General Manager, **CUCINA LENTA**

---

---

piano

---

---

piano  
piano

---

Do Mi Sol Do

Do Sol Mi Do

Câte-o notă dac-așezi pe portativ

Construiești arpegii, game c-un motiv

Le repeți cu voce tare, să nu cânți pe nas



Game-arpegii și solfegii, timp de-un ceas

Do Mi Sol Do

Do Sol Mi Do

Dacă exersezi în fiecare zi

Muzica va fi o joacă de copii

Do Mi Sol Mi, Do Mi Sol Mi, fă așa mereu

Cu o gamă și-un arpegiu nu e greu

Do Mi Sol Do

Do Sol Mi Do

7 note musicale



7 note muzicale

pentru a compune simfonii,  
ori piese rock

>**300** building blocks SAP  
S/4HANA Public Cloud

pentru a compune proiecte de  
transformare digitală de succes



Vă propun, atunci

să ne luăm zborul

să ne luăm zborul  
ca și FLUTURII

să ne luăm zborul

ca și **FLUTURII**

și să ne asumăm faptul că

să ne luăm zborul  
ca și **FLUTURII**  
și să ne asumăm faptul că  
probabil vom fi confundați



să ne luăm zborul  
ca și **FLUTURII**  
și să ne asumăm faptul că  
probabil vom fi confundați  
cu niște **MONȘTRI**

