



Digital Supply Chain for Manufacturing SAP Strategy and Roadmap

Veronika Schmid-Lutz, Chief Product Owner, Digital Manufacturing
September 11th , 2019

PUBLIC

Disclaimer

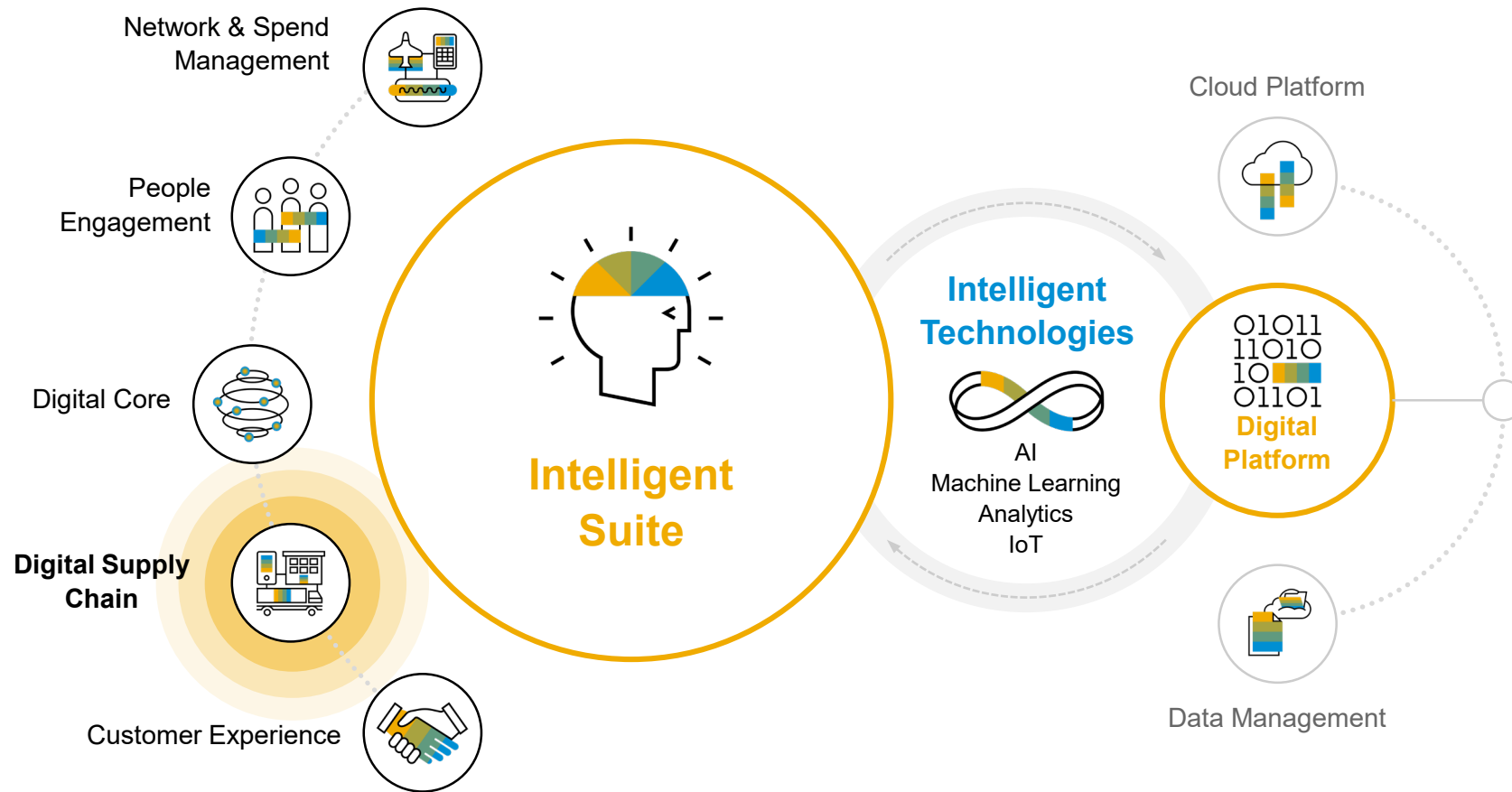
The information in this presentation is confidential and proprietary to SAP and may not be disclosed without the permission of SAP. Except for your obligation to protect confidential information, this presentation is not subject to your license agreement or any other service or subscription agreement with SAP. SAP has no obligation to pursue any course of business outlined in this presentation or any related document, or to develop or release any functionality mentioned therein.

This presentation, or any related document and SAP's strategy and possible future developments, products and or platforms directions and functionality are all subject to change and may be changed by SAP at any time for any reason without notice. The information in this presentation is not a commitment, promise or legal obligation to deliver any material, code or functionality. This presentation is provided without a warranty of any kind, either express or implied, including but not limited to, the implied warranties of merchantability, fitness for a particular purpose, or non-infringement. This presentation is for informational purposes and may not be incorporated into a contract. SAP assumes no responsibility for errors or omissions in this presentation, except if such damages were caused by SAP's intentional or gross negligence.

All forward-looking statements are subject to various risks and uncertainties that could cause actual results to differ materially from expectations. Readers are cautioned not to place undue reliance on these forward-looking statements, which speak only as of their dates, and they should not be relied upon in making purchasing decisions.

The Intelligent Enterprise

The Foundation of a Digital Supply Chain



The Intelligent Enterprise features **3 key components**:

1

Intelligent Suite

2

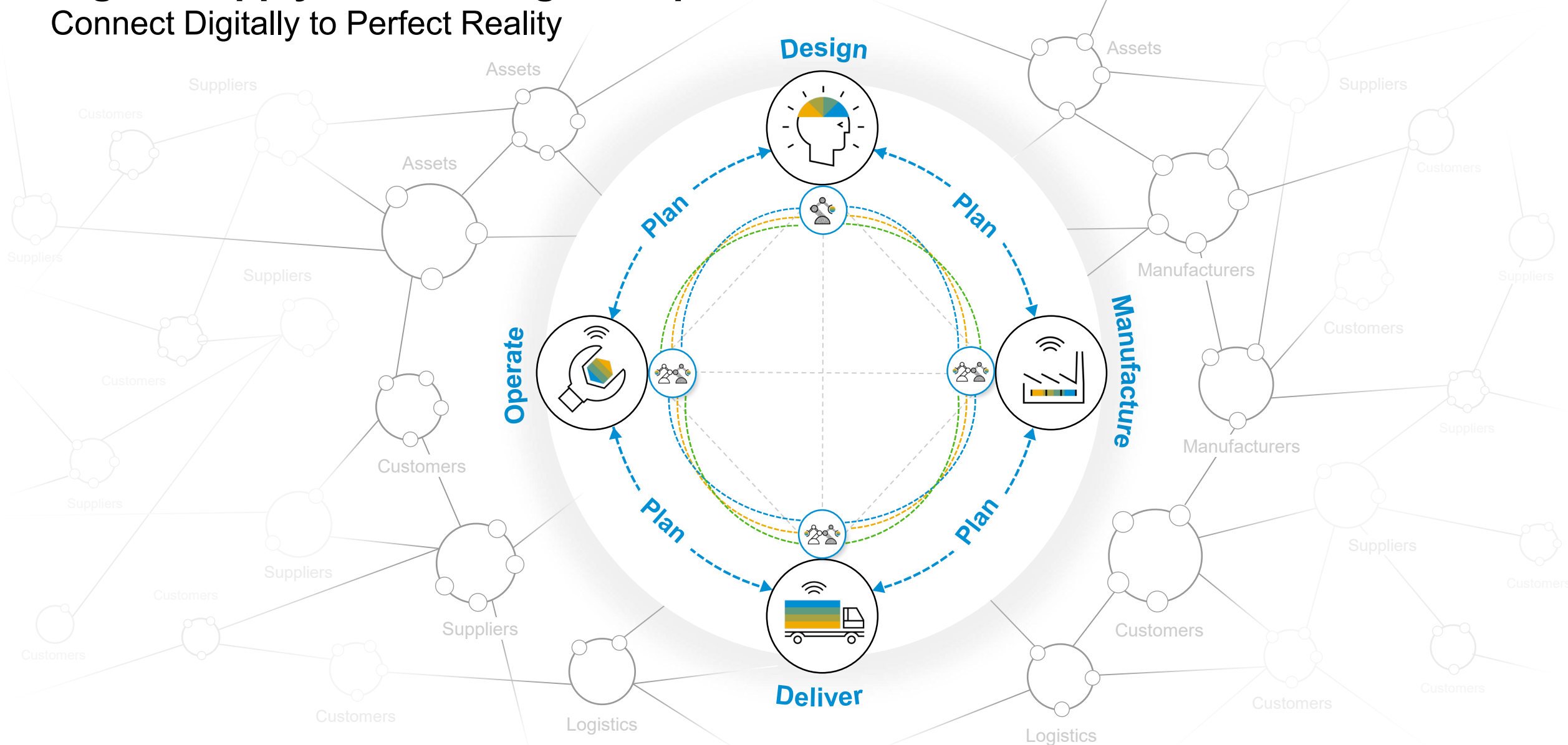
Intelligent Technologies

3

Digital Platform

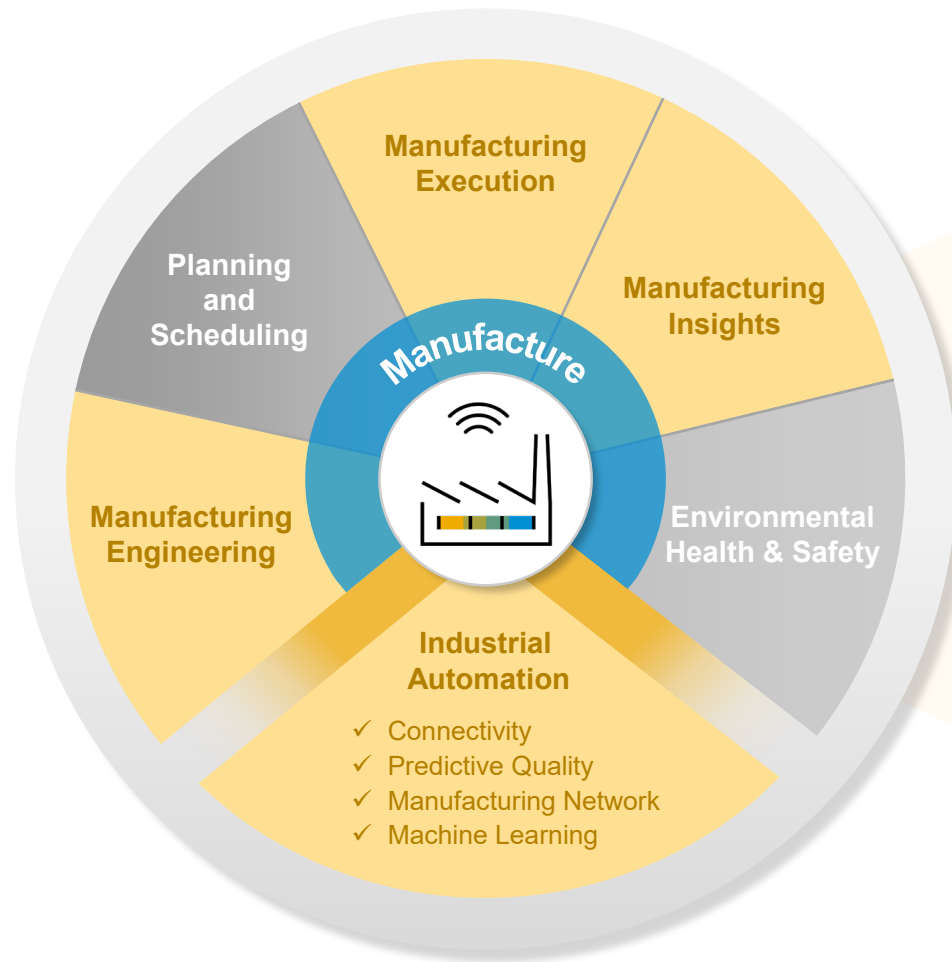
Digital Supply Chain Design to Operate

Connect Digitally to Perfect Reality



SAP Digital Manufacturing Solutions

A complete portfolio of manufacturing solutions to support digitalization and Industry 4.0



SAP Digital Manufacturing Cloud

- Manufacturing Insights
- Predictive Quality
- Manufacturing Execution



SAP Manufacturing Suite

- SAP Manufacturing Integration and Intelligence
- SAP Manufacturing Execution
- SAP Plant Connectivity



SAP S/4HANA Manufacturing

- for Production Engineering and Operations
- for Planning and Scheduling
- Environmental, Health & Safety



SAP Digital Manufacturing Cloud

Automate processes and resources to improve manufacturing efficiency, quality and productivity



Paperless production with intuitive user interfaces for production operators, automatic data collections and set machine parameters, thereby lowering cost, increasing productivity and quality.



Design, distribute and dynamically control manufacturing shop floor activities enabling a smart factory.



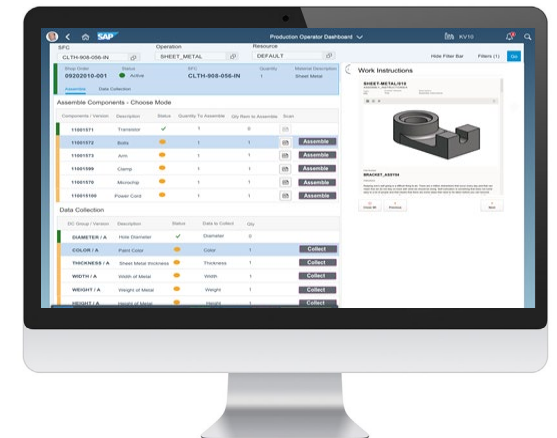
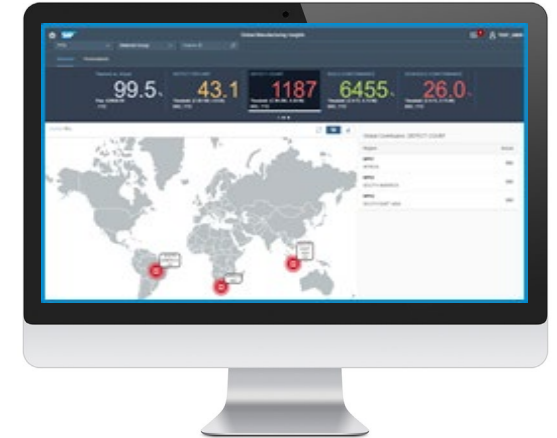
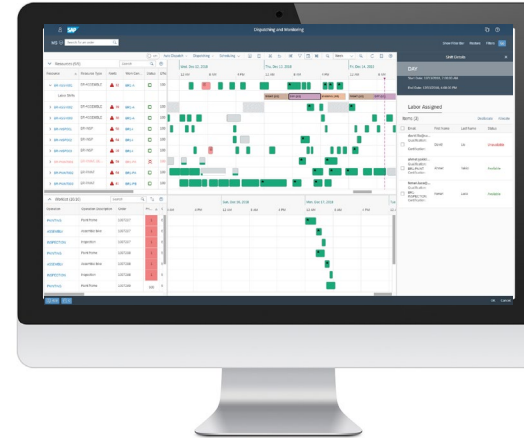
Shift and Labor planning to ensure business operations with right qualifications. Production Order scheduling and dispatching considering labor, resource and maintenance constraints to plan operations and adopt to short term changes.



Cross plant real-time analytics for manufacturing performance e.g. Perfect Order Fulfillment, Overall Equipment Effectiveness, loss analysis along with machine data to identify improvement opportunities.



Ability to collect and share product genealogy data between members of the network to trace accountability and provide transparency.



SAP Manufacturing Suite (On-Premise)

Automate processes and resources to improve manufacturing efficiency, quality and productivity



Seamlessly connect top-floor to shop-floor operations to achieve rapid return on investment with out-of-the-box integration to SAP solutions. Provide your plants real time enterprise information to include latest supply chain changes into your agile operations.



Enables global manufacturers to efficiently produce products according specification, ensuring quality, full traceability, for manual and highly automated processes.



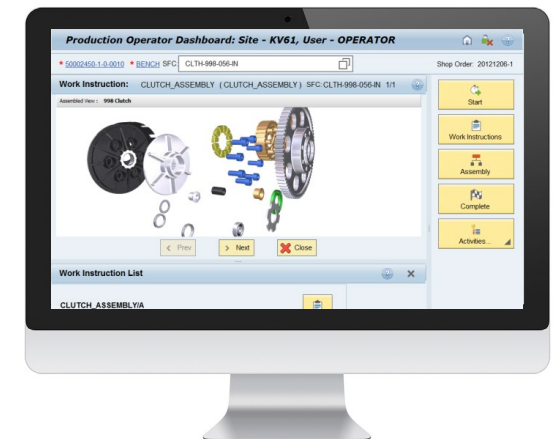
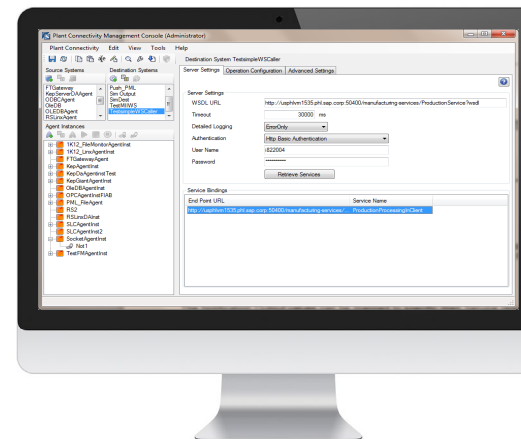
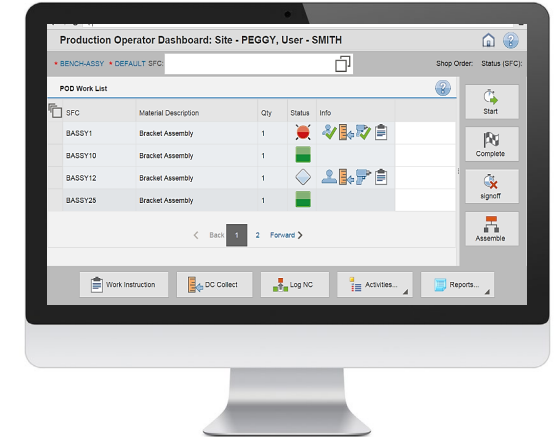
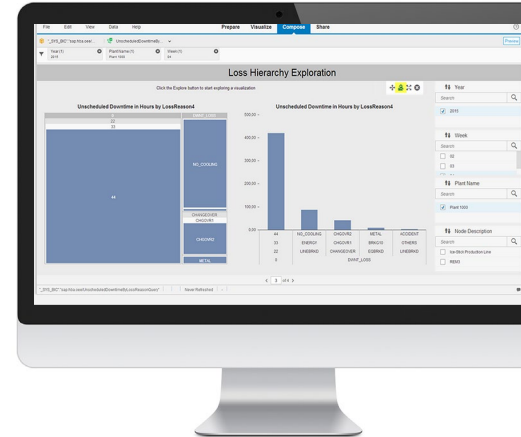
Paperless production with intuitive user interfaces for production operators, automatic data collections and set machine parameters, thereby lowering cost, increasing productivity and quality.



Monitor and document the entire manufacturing process to optimize resources and execution, reacting quickly to unexpected events utilizing the built-in intelligence



Connect your Operational technologies like logic controllers, devices, plant historian systems of your various manufacturing systems.



Production Engineering and Operations (PEO) in S/4 HANA

Intelligent Handover from Engineering to Manufacturing



Convert product design into holistic production process design used for material and production planning, production order management and shop floor execution.



Orchestrate, control and document all changes done to manufacturing objects via Change Record Management



Perform comprehensive change impact analysis to identify objects which are affected by changes, and decide how and when to introduce the change

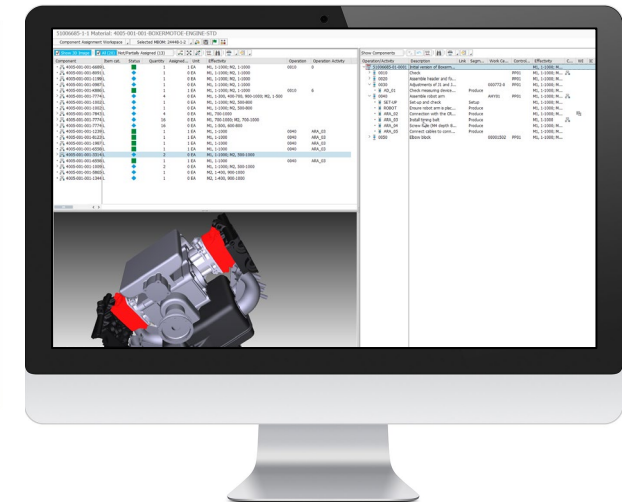
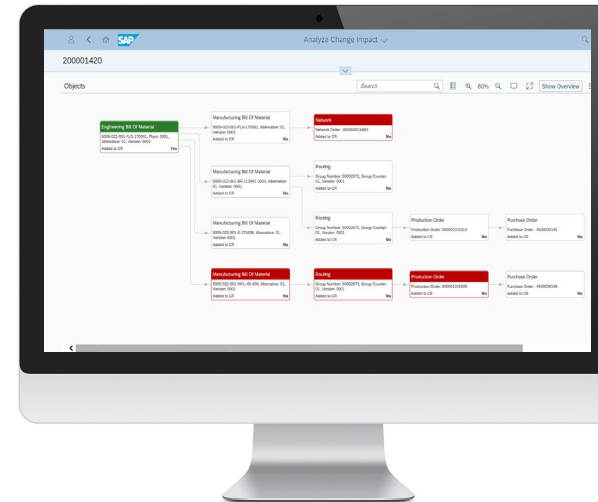
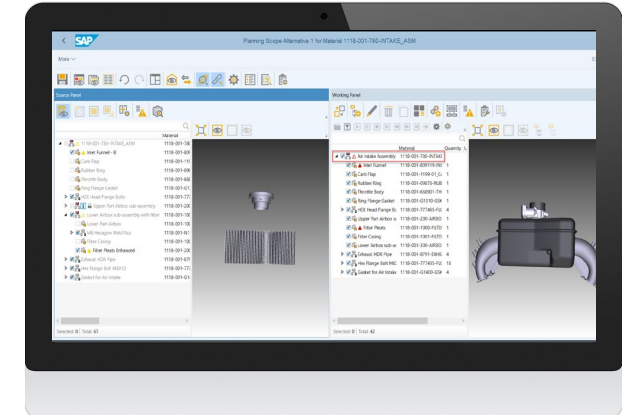
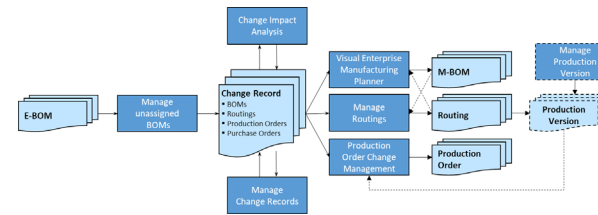


Define production process on different levels of granularity within one combined routing, addressing:

- costing and planning needs on operation level
- shop floor needs on activity level



3D visual support for BOM management, routing definition and interactive work instruction authoring.



SAP Manufacturing Suite

Selected Highlights



SAP Manufacturing Suite Highlights

Integration Excellence

ERP Integration “out of the box”
Easy integration with shop-floor Automation layer
Lot Size 1 and Mass Customization

Process Excellence

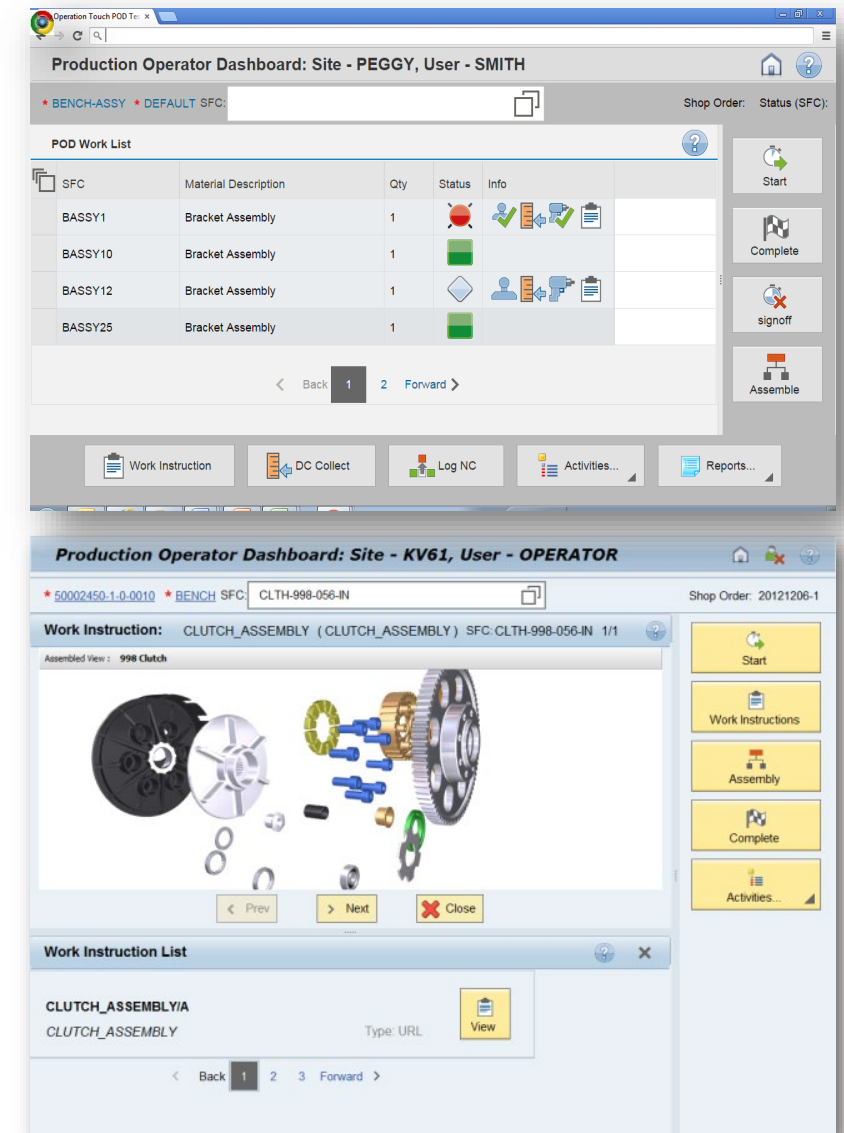
Unit Level Tracking & Tracing
Comprehensive Nonconformance Management
Process Interlocking
High Performance with HANA

Flexibility & Agility Excellence

High Flexibility and Extensibility
Pure SOA based Architecture
Flexible Production Process Modeling without additional programming

Usability Excellence

Pure Browser Based Uis
Role specific access and Personalized Dashboards for operators

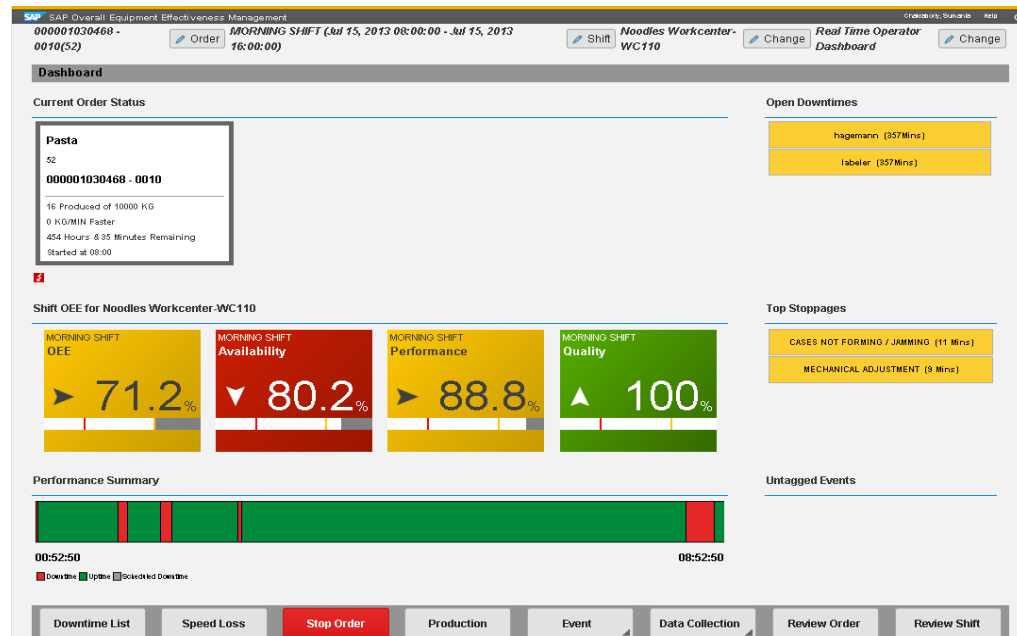


SAP Manufacturing Suite

Overall Equipment Effectiveness

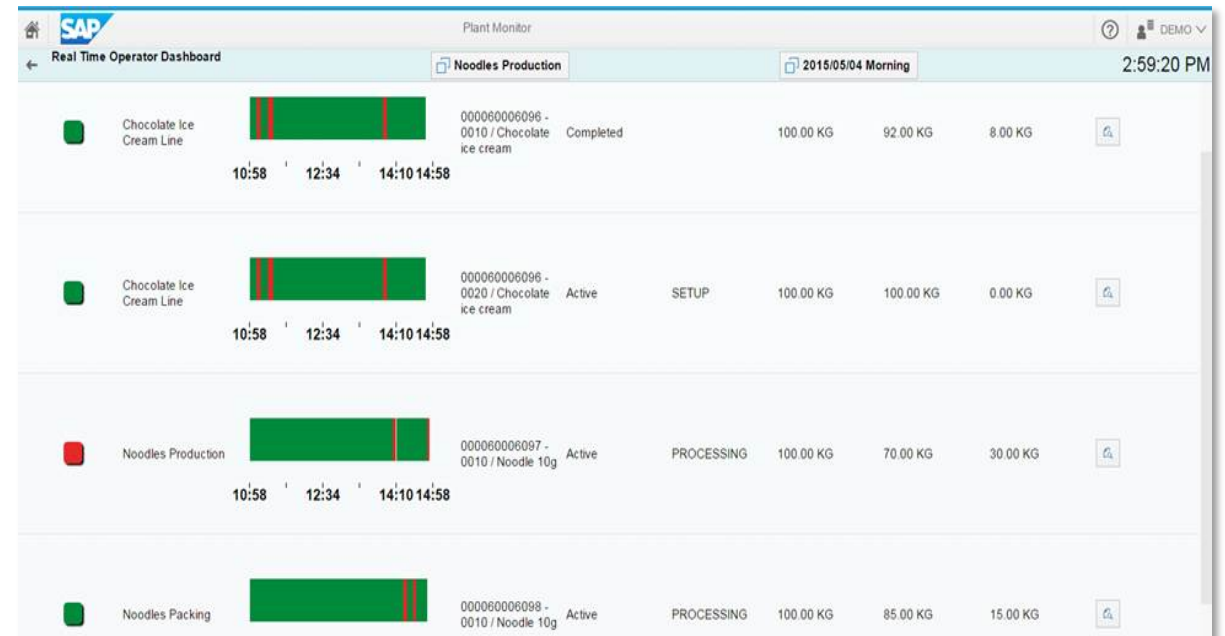
Description

- Collect all OEE relevant information manually (Operator UI) or automatically (via PCo)
- OEE Analytics
- Single, common framework for all plants
- Cross plant performance comparison



Key Benefits

- Provide real time performance information
- Identify best practice
- Continuous Improvements

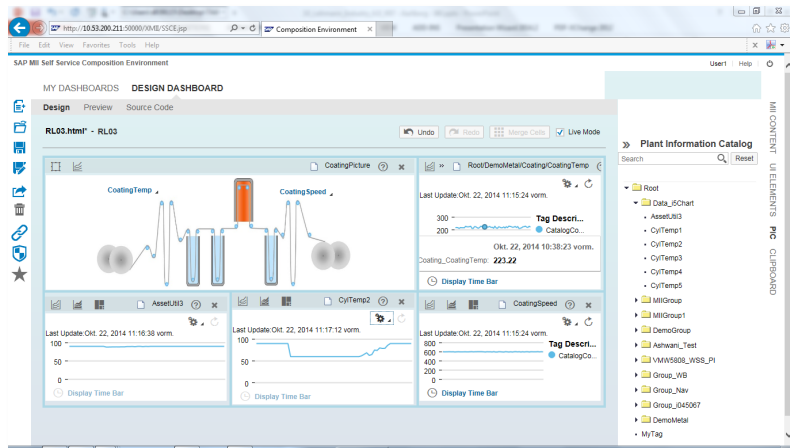


SAP Manufacturing Suite

Self Service Composition Environment

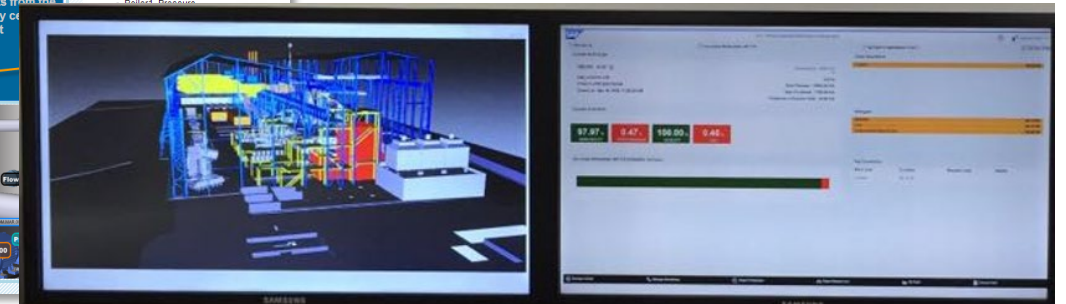
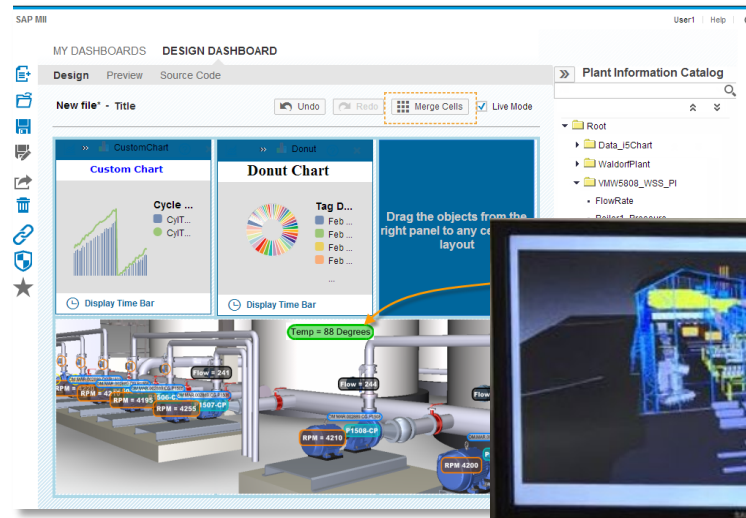
Description

- Browser(HTML5) based design tool for dashboard creation by consuming different MII objects
- WYSIWYG based design
- Integrating tag value changes directly to browser using web socket interface or through catalogue query template
- Source code generation for high sophisticated UIs
- 3D file integration and simplified reporting for manufacturing application



Key Benefits

- Simplified interface for dashboard creation.
- Reduce the time required for dashboard creation
- Dashboard accessibility from mobile devices
- Remove the dependency on JRE required on each of the machine
- Build reporting application without any coding



SAP Digital Manufacturing Cloud

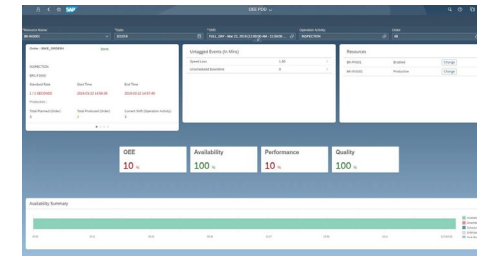
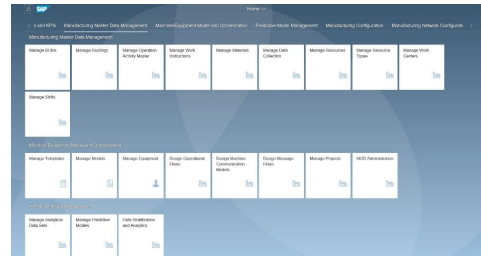
Selected Highlights



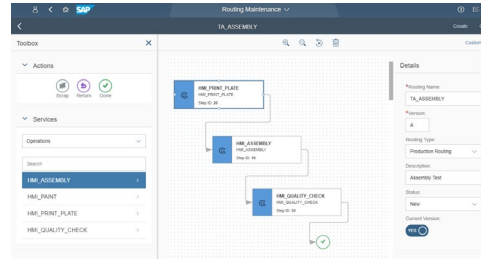
SAP Digital Manufacturing Cloud for execution

Orchestrate and control the shop floor

- Monitor the entire manufacturing process to optimize resources and execution
- Role-specific Fiori and operator dashboards
- Production Operator Dashboard (POD) is fully configurable, supports drag/drop and preview
- Operator OEE dashboards to monitor OEE and manage downtime events.
- Resource Orchestration to manage shop floor work flow and labor assignments
- Automation interfaces to provide for shop floor driven manufacturing events and data collection



This screenshot shows the Production Operator Dashboard (POD). It displays a table of production orders with columns for Order ID, Material Description, OEE, Status, and Info. The table lists several orders, including 'C17H-B001-04' and 'C17H-B002-04', with their respective descriptions and status indicators.



This screenshot shows the SAP Dispatching and Monitoring interface. It displays a Gantt chart for resource utilization over time, with a table on the right showing the details of the resources. The table includes columns for Resource, Order, Quantity, and Last Processing Date. The resources listed include 'HRL_PRINT_PLATE', 'HRL_PRINT_PLATE', 'HRL_PRINT_PLATE', and 'HRL_PRINT_PLATE'.

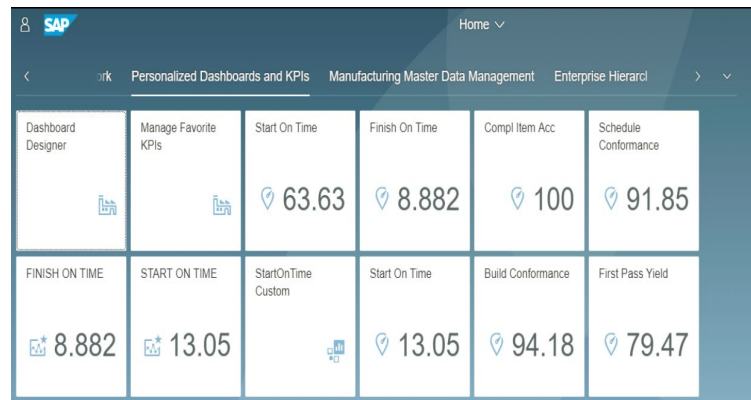
SAP Digital Manufacturing Cloud for Insights

Key Performance Indicators

Manufacturing Insights can provide insight on real-time sensor data, transactional/operational data from the ERP/MES Systems and calculated KPI's which can help manufacturers to know what happened in manufacturing at the very first time

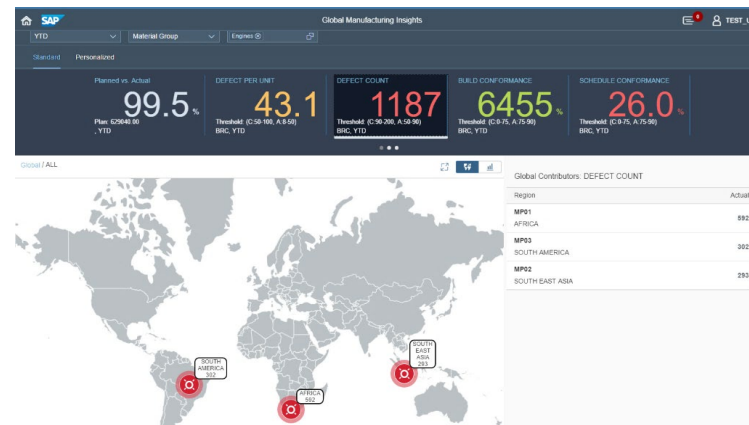
Predefined and customized KPI

- Monitor performance using standardized key performance indicators (ca. 18 KPIs)
 - Order quantity fulfillment
 - Quality
 - On-time delivery & Schedule conformance
 - Overall Equipment Effectiveness (OEE)
- Custom key performance indicators (KPI) definitions using Analytical Modeler



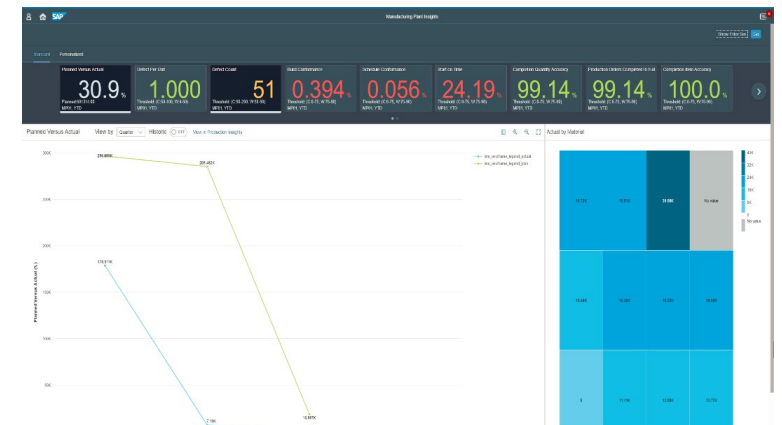
Global Manufacturing Insights

- Generate and measure global performance across regions, countries and plants
- Cross plant comparison of KPIs
- Anywhere access to real-time data on mobile device
- Governance for entire enterprise
- Subscribe to alerts for ease of monitoring



Plant Manufacturing Insights

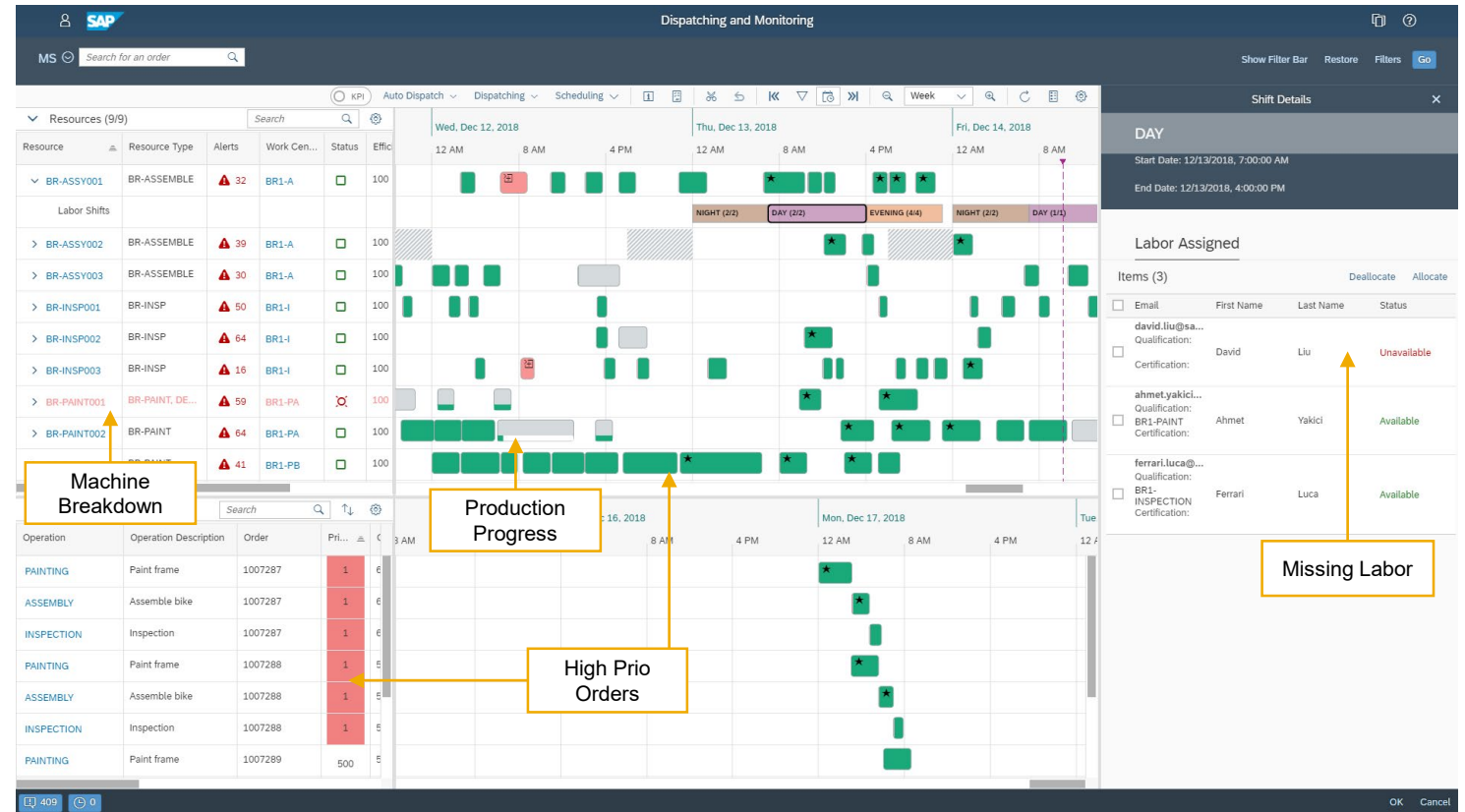
- KPI performance monitoring for a given plant
- Visibility of key areas impacting the performance of the KPI
- Drill down to find root cause of which material, work center, or order is causing the issue



SAP Digital Manufacturing Cloud for Execution

Resource Orchestration & Dispatching

- Orchestrate labor and resources on the shop floor to achieve maximum availability
- React quickly to unexpected events utilizing built-in intelligence
- Dispatch and sequence operations to reflect the “real world” on the shop floor
- Monitor the entire manufacturing process to optimize resources and execution
- Reflect the reality on the shop floor by visualizing high priority orders, machine breakdowns, missing labor and production progress

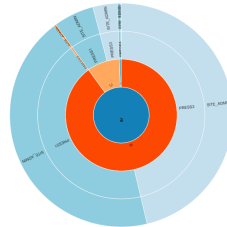
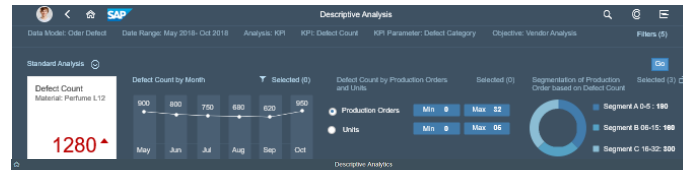
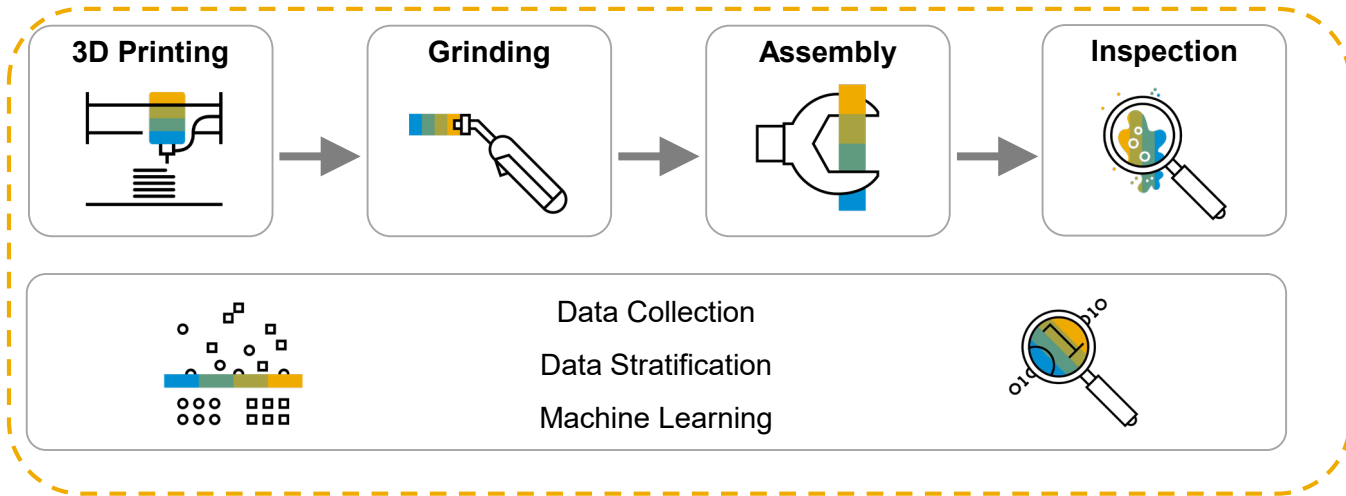


Manufacturing Insights

Predictive Quality

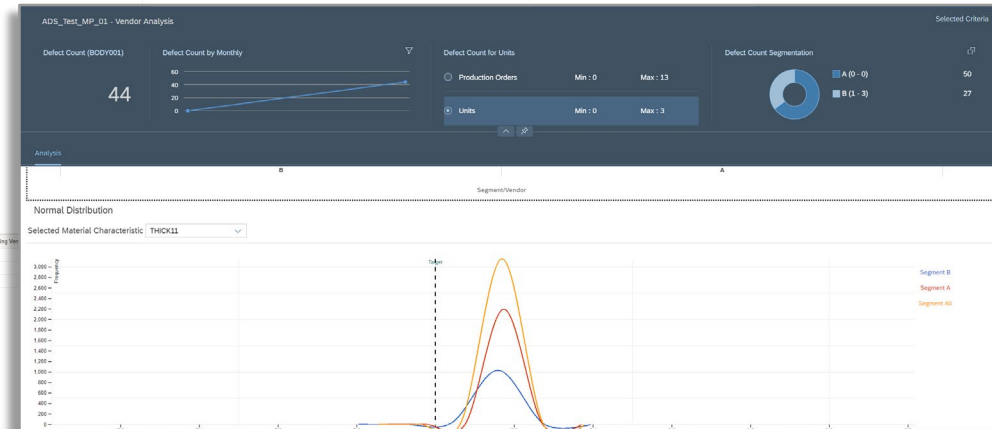
Key Capabilities

- Expose manufacturing big data (IT/OT data) in the pre-defined manufacturing semantics
- Intuitive workbench to Analyze & Correlate multi-tier data related to 3Ms of manufacturing
 - 3Ms = Machine, Material, and Method
- Simplify predictive model building and model life cycle management to keep pace with the operations
- Near real-time evaluation/scoring of predictive models and trigger corrective actions to the right people



Batch Information (1059)

Batch No./Defect No./QC	Production Order	Defect Quantity	Workcenter	Resource	Operation	Plant	Routing Ver
PQ043449	60010554	128	Press1	PRE353	Pressing	Bas Run Automobile	A-1
PQ043443	60010554	128	Press1	PRE353	Pressing	Bas Run Automobile	A-1
PQ043435	60010554	128	Press1	PRE353	Pressing	Bas Run Automobile	A-1

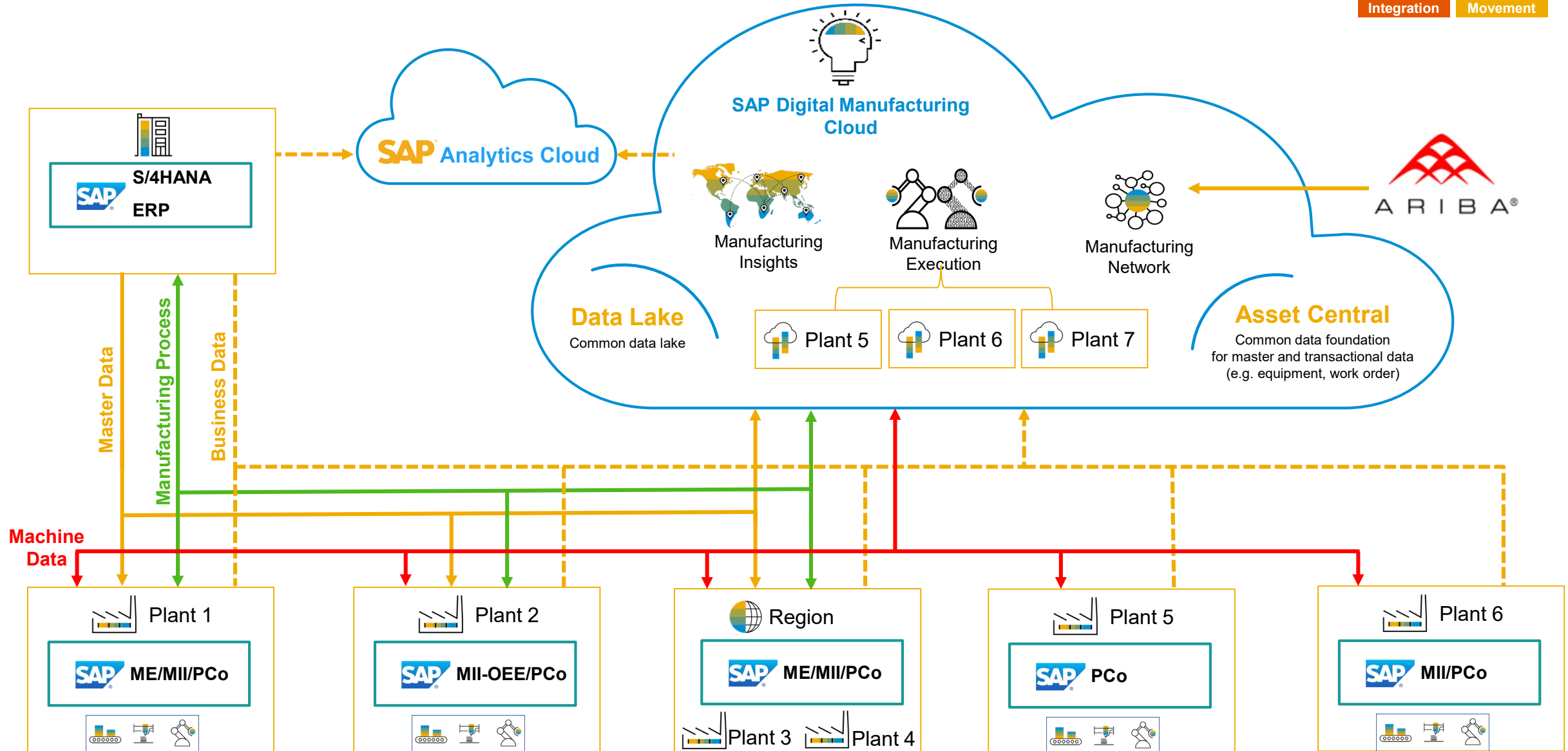


SAP Digital Manufacturing

Hybrid Scenarios and Target Architecture



Example for Hybrid Digital Manufacturing Landscape



SAP Digital Manufacturing Cloud

Future Plans



Digital Manufacturing Cloud for Execution

Supporting multiple production scenarios for process industries

Future Scope /
Subject to change

Basic Scenario - Process Order Execution

- Execute batch-related order based on operations/phases with an intuitive user interface for the operator
- Trigger material movements
- Confirm production progress
- Provide capabilities to print documents and labels

Extended Scenario - Process Order Execution

- Maintain enhanced work instructions to allow strong worker guidance
- Allow batch splits during order dispatching and order processing
- Batch classification
- Customer-specific batch numbering
- Support of Co-/By Products
- Manual and automatic data collections
- Mass data entry options for process order
- Quantity calculations

Future Scenarios

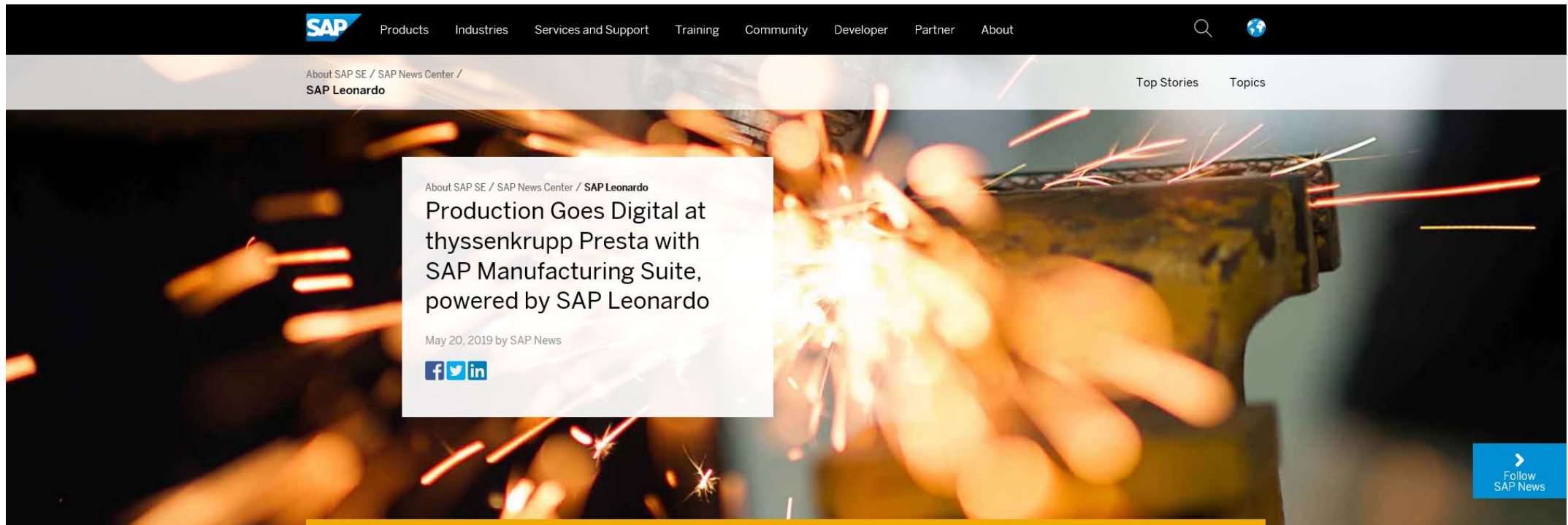
- Weigh & Dispense
- Blending & Mixing
- Continuous Production
- Regulated Production
- (...)

SAP Digital Manufacturing

Customer Examples



ThyssenKrupp Presta digitizes production with SAP Manufacturing Suite



- SAP supports the ThyssenKrupp Presta Steering Group in the further digitization and integration of production processes and systems;
- Greater efficiency and quality in global production;
- With the SAP Manufacturing Suite, ThyssenKrupp Presta Steering is implementing a modern, scalable cloud / on-premise hybrid solution with the goal of sustainably transforming and digitizing global production;
- The solution package implemented by ThyssenKrupp Presta consists of the components SAP Manufacturing Execution Suite (SAP MES), SAP Analytics Cloud and the SAP Cloud Platform
 - The first pilot plants are already in productive operation at the ThyssenKrupp Presta France plant

<https://news.sap.com/2019/05/production-digital-thyssenkrupp-presta-sap-manufacturing-suite-sap-leonardo/>

Hindustan Zinc Ltd. increases transparency with SAP MII OEE

SAP Business Transformation Study | Mining and Mill Products | Hindustan Zinc

- **Customer: Hindustan Zinc Ltd.**
- Main objective of implementing SAP OEE was to capture downtime automatically and raise maintenance notification in SAP ERP system from the OEE Worker UI
- **Automatic calculation of KPIs**
- Single User Interface for operator

Saving time and increasing visibility

Company

Hindustan Zinc Limited

Headquarters

Udaipur, India

Industries

Mining and mill products – primary metals

Products and Services

Zinc, lead, silver, and cadmium

Employees

6,742

Revenue

Rs 14,788 crore
(US\$2.32 billion) (2014–2015)

Web Site

www.hzlindia.com

Partner

Sarla Technologies
www.sarlatech.com

Objectives

- Achieve better visibility, clarity, and transparency into operations for improved strategic decision making
- Improve compliance and reduce errors with processes based on enterprise resource planning
- Automate the collection and reporting of operational data for greater efficiency

Why SAP

- Long-time user of SAP® software
- Proven success of the SAP Manufacturing Integration and Intelligence (SAP MII) application among industry peers
- Immediate technical help through SAP Service and Support offerings like the SAP Ramp-Up program

Resolution

- Worked with SAP Consulting to support the SAP MII implementation
- Integrated shop-floor systems with the SAP ERP application for real-time information flow
- Migrated data captured in spreadsheets to SAP MII
- Automated overall equipment effectiveness (OEE) calculations

Benefits

- Simple, user-friendly interface
- Time savings by automating weigh scales, equipment failure notifications, and OEE dashboard reporting
- Greater visibility with centralized data and integrated processes

“SAP MII automatically captures shop-floor data, therefore reducing the time required to capture and report on this information. It also provides greater visibility into our manufacturing process. And SAP Service and Support offerings helped ensure a smooth deployment and continued support.”

Mr. Pradeep Vijay, Head – SAP, Hindustan Zinc Limited

20%–30%
Faster reactions to process parameters

50%–60%
Automation of notification for process parameter deviations

80%
Of relevant process parameters controlled through SAP MII

39177 (15/07) © 2015 SAP SE or an SAP affiliate company. All rights reserved.

SAP supports your Digital Transformation in Manufacturing

“The digital transformation in manufacturing is going to be enormously impactful for companies like Jabil. We see it as a tremendous opportunity for us to **respond** to customers **more quickly**, to build products in regions that are **closer to where the end customers** are, and to open up entirely **new business models**.”

John Dulchinos, Vice President of Digital Manufacturing for Jabil

Thank you.

Veronika Schmid-Lutz

Chief Product Owner SAP Digital Manufacturing

SAP SE

Dietmar-Hopp-Allee 16
69190 Walldorf Germany

M: +49 (171) 30 85 082
mailto:veronika.schmid-lutz@sap.com

Product road maps for digital manufacturing available on sap.com/roadmaps include:

- [SAP S/4HANA Manufacturing for production engineering and operations](#)
- [SAP Manufacturing Suite](#)
- [SAP Digital Manufacturing Cloud](#)