

PI PO migration recommendations
SAP Event Mesh

Businesses are reaping the rewards of cloud-based integration

Are you ready?

30% to 40%
less effort with iPaaS
integration

“According to our research, **rebuilding integrations in iPaaS technologies takes 30% to 40% less effort** than building the same integrations on an older technology, like an enterprise service bus (ESB).”

50%
will migrate to cloud-
based integration by 2025

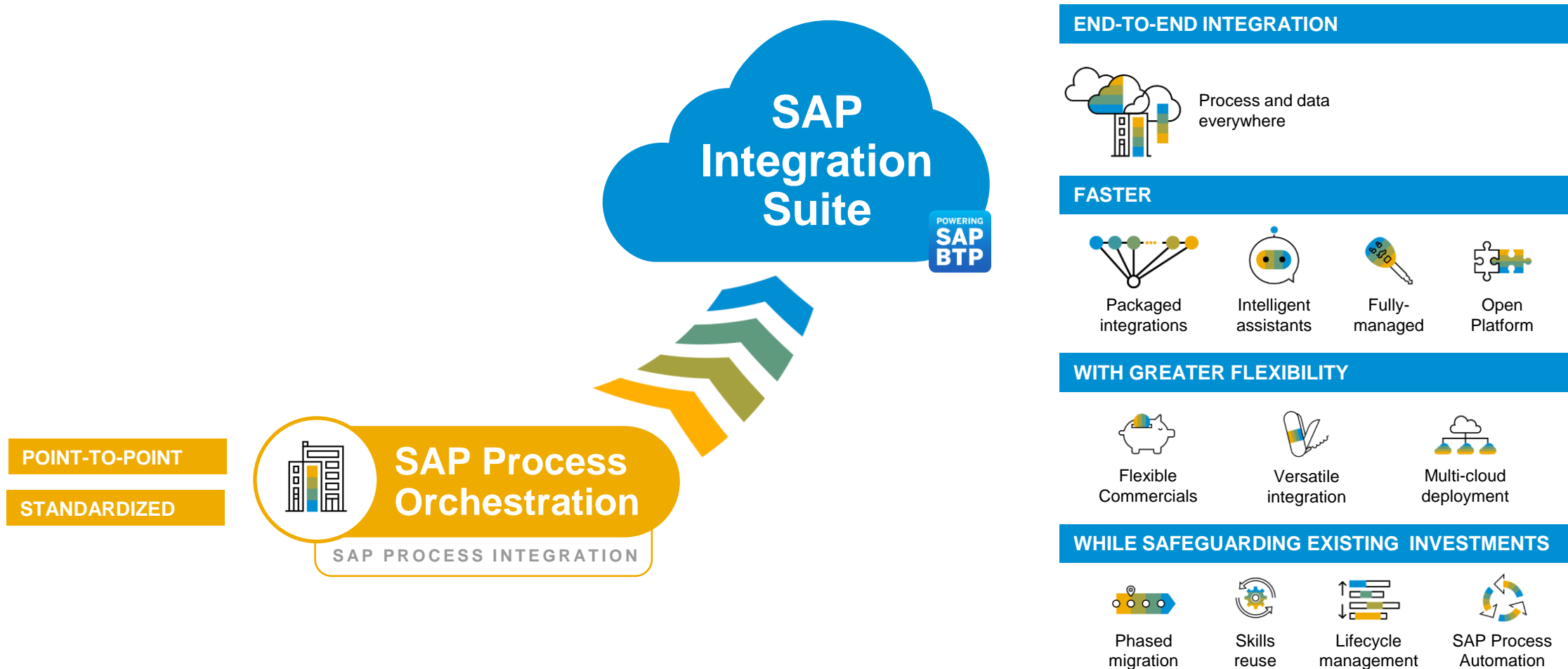
“By 2025, **over 50% of the organizations** that are using older-generation integration platforms like ESBs **will migrate their business-critical integrations to cloud-based integration solutions.**”

Source:

Gartner®, [How to Successfully Migrate to a New Integration Platform](#), Abhishek Singh, October 2021

GARTNER is a registered trademark and service mark of Gartner, Inc. and/or its affiliates in the U.S. and internationally and is used herein with permission. All rights reserved.

Modernize integration to power your transformation journey



Achieve end-to-end-process integrations faster at a lower TCO

SAP Migration Factory

Detailed Engagement Model

Migration Assessment

STEP 1: Define Scope (Capture Information & Analyze)

Information / Access Required

- Migration Questionnaire
- Review as-is architecture & landscape (including interfaces and applications)
- Access to current environment (ideal but optional)

Access to Customer

- 2-to-3 (1 hr.) technical calls with customer

STEP 2: Migration Plan

Review and Approve

- Migration Scope (inventory of integrations; SAP & non-SAP)
- Migration Roadmap (Dev/QA/Production cutover)
- Migration Plan (timeline, effort and cost)

SAP Integration Suite Education

- Migration Benefits & IS Education

Migration Execution

STEP 3: Migration Prep & Execution

Migration Execution

- Ramp-up customer: SAP Integration Suite
- Prepare environment (Dev/QA/Prod)
- Migrate artifacts
- Test & adjust migration
- Go-live
 - Configure production integration/apps
 - Monitor for issues
 - Final enablement/sign-off by customer

SAP Integration Suite – Migration Assessment Tool

Request

Configure

Settings

Request / Data Extractions

Data Extractions

1 Requests | 0 Error | 1 In Progress | 0 Completed

Search

Create

Delete

Request Name	Created On/At	System Name	Status	Log
<input type="radio"/> Test	Jun 7, 2023, 11:46:23 AM	QX1	In Progress	

Request

Configure

Settings

Request / Scenario Evaluation

Scenario Evaluation

1 Requests | 0 Error | 0 In Progress | 1 Completed

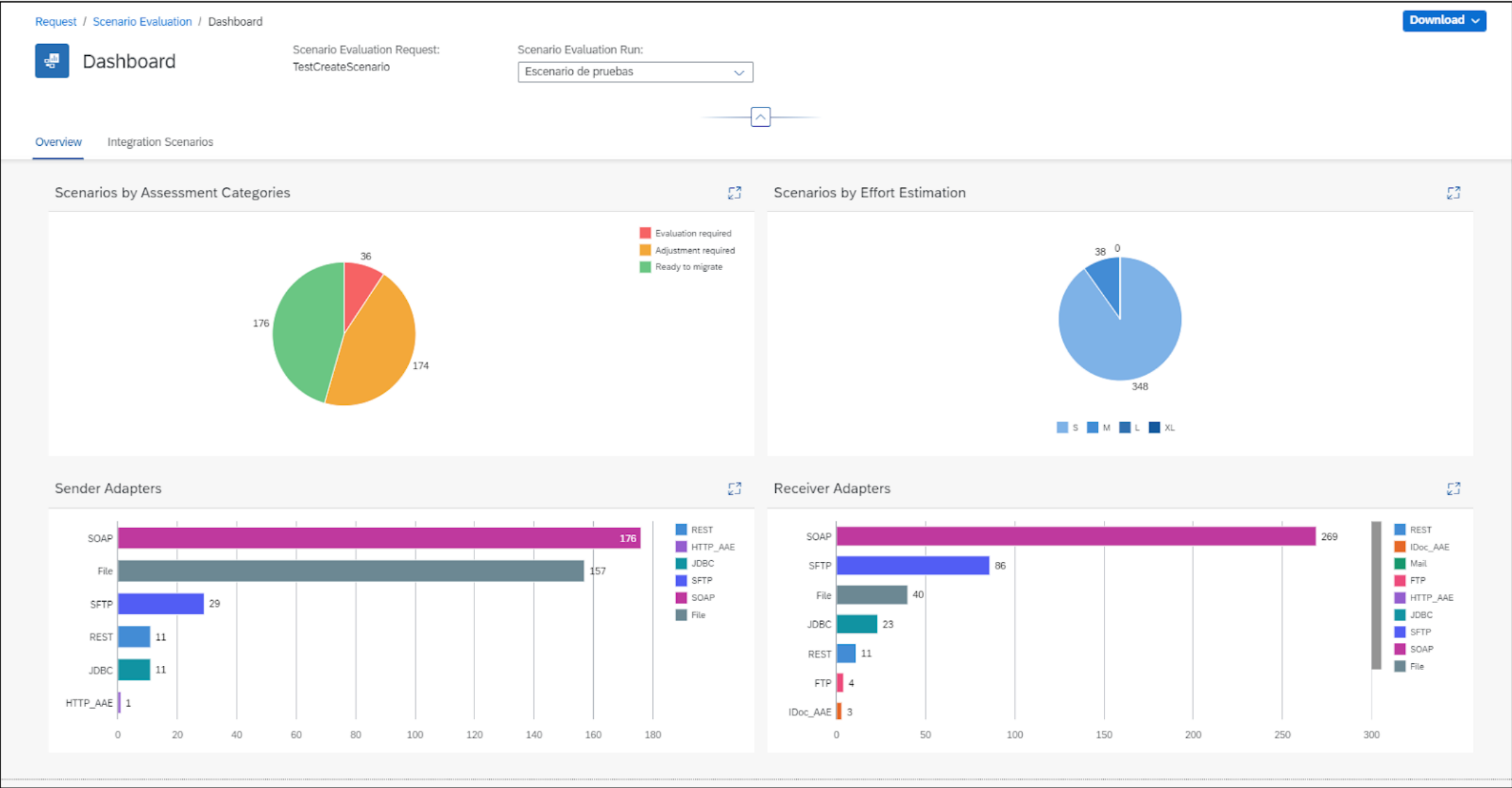
Search

Create

Delete

Request Name	Created On/At	Data Extraction Request	System Name	Status	Actions
<input type="radio"/> TestCreateScenario	07-Jun-2023 02:56:39	Test	QX1	Completed	...

SAP Integration Suite – Migration Assessment Tool



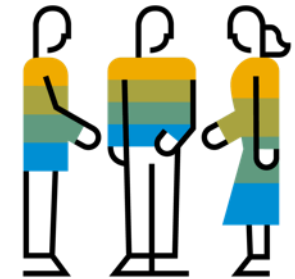
SAP Integration Suite – Migration Challenges



Migration possible?
Effort to migrate?
Pre-built content available?
Hands on via proof of concept?



Future integration landscape?
Which SAP BTP integration services?
Operations and security strategy?



Best practice implementation?
Impact on future organization?
Enablement?

SAP Integration Suite – Understanding the Approach

Brownfield

Copy/Migrate as much as possible content from SAP PI/PO to Cloud Integration without changing the logic. It's a good option in cases with many standard integrations.

Greenfield

Plan & Design new integration landscape, preparing for the future. Build based on new guidelines, learn about new capabilities and migrate with refactor them in waves to IS.

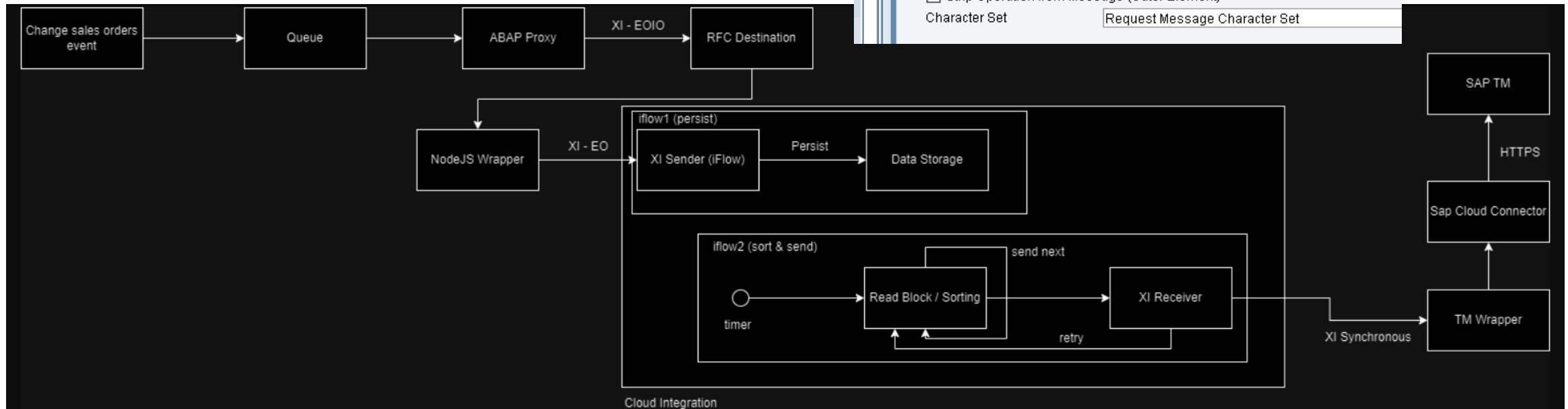
Selective

Copy the mass of interface in an intelligent way and implement changes where it'll bring quick wins or improve the integrations. Add some new Integration Suite features for the relevant cases.

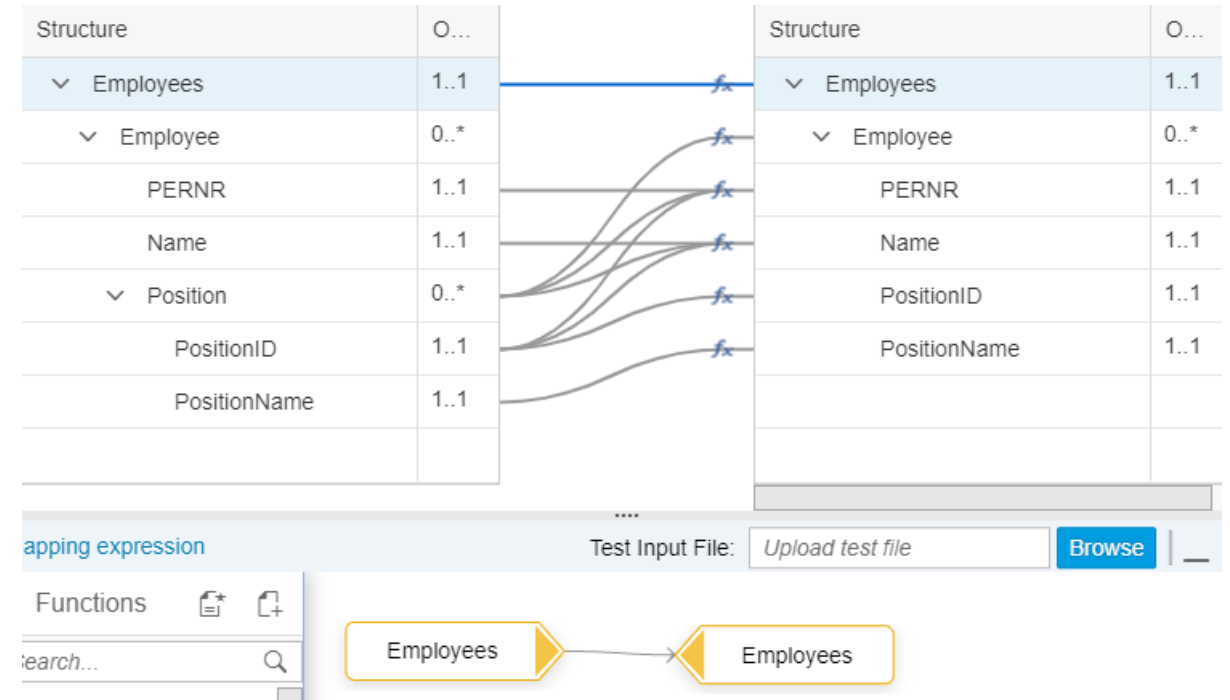
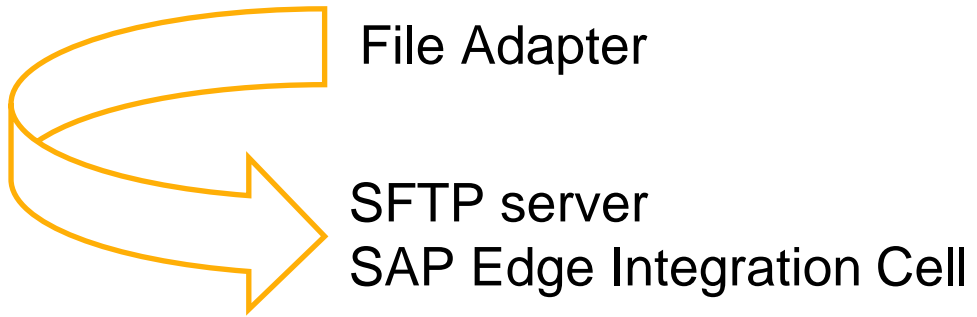
SAP Integration Suite – Migration: Our experience

- XI Adapter QoS
- RFC Transactional

The screenshot shows the configuration interface for a REST adapter in the SAP Integration Suite. The 'Message Protocol' is set to 'REST' and the 'Adapter Engine' is 'Central Adapter Engine'. The 'General' tab is active, showing 'Input Message Format' with 'Data Format' as 'XML' and 'Character Set' as 'HTTP Content-Type Header'. The 'Quality of Service' section shows 'Quality of Service' set to 'Best Effort'. The 'Output Message Format' section shows 'Data Format' as 'By HTTP Operation' and 'Character Set' as 'Request Message Character Set'. There are also checkboxes for 'Support attachments' and 'Strip Operation from Message'.



SAP Integration Suite – Migration: Our experience



SAP Integration Suite – Event Mesh

Cloud service for enabling applications to **communicate asynchronously** through **events**


Overview

- **Event-broker-as-a-service** capability to decouple communication between event sources and event consumers
- **Low-entry barrier** to event-driven architectures, specifically since pricing is based on **pay per use**
- Help to **integrate SAP applications** in an event-driven way based on SAP Integration Suite
- **SAP BTP deployment** only
- **Ability to scale well** with **set limits**

Benefits

- **Integration** with SAP software back ends and ecosystem
- **Native event broker** for SAP S/4HANA and SAP S/4HANA Cloud, free add-on available for event-enabling SAP ERP Central Component
- **Openness and focus** at the same time by supporting standard protocols and patterns (like REST, AMQP, MQTT, pub/sub) while providing extra benefits for the SAP ecosystem (for example, SAP Cloud Application Programming Model)


SAP Integration Suite – Advance Event Mesh


Mission Control
Cluster Manager
Mesh Manager
Event Portal
Designer
Catalog
Discovery
API Products
Event Insights
Insights

Welcome to SAP Integration Suite, advanced event mesh

Event Management New Event Portal 2.0 : Off


Event Portal



Designer

Design your event driven architecture components


Event Portal



Catalog

Browse or search for events, schemas, and applications across your enterprise


Event Portal



Discovery

Discover and visualize events from your event brokers

Event Portal




Event API Products

Bundle your events and make them available as Event API Products

Event Streaming


Mission Control



Cluster Manager

Control the lifecycle of your Event Broker Services

Mission Control




Mesh Manager

Create and manage your event meshes

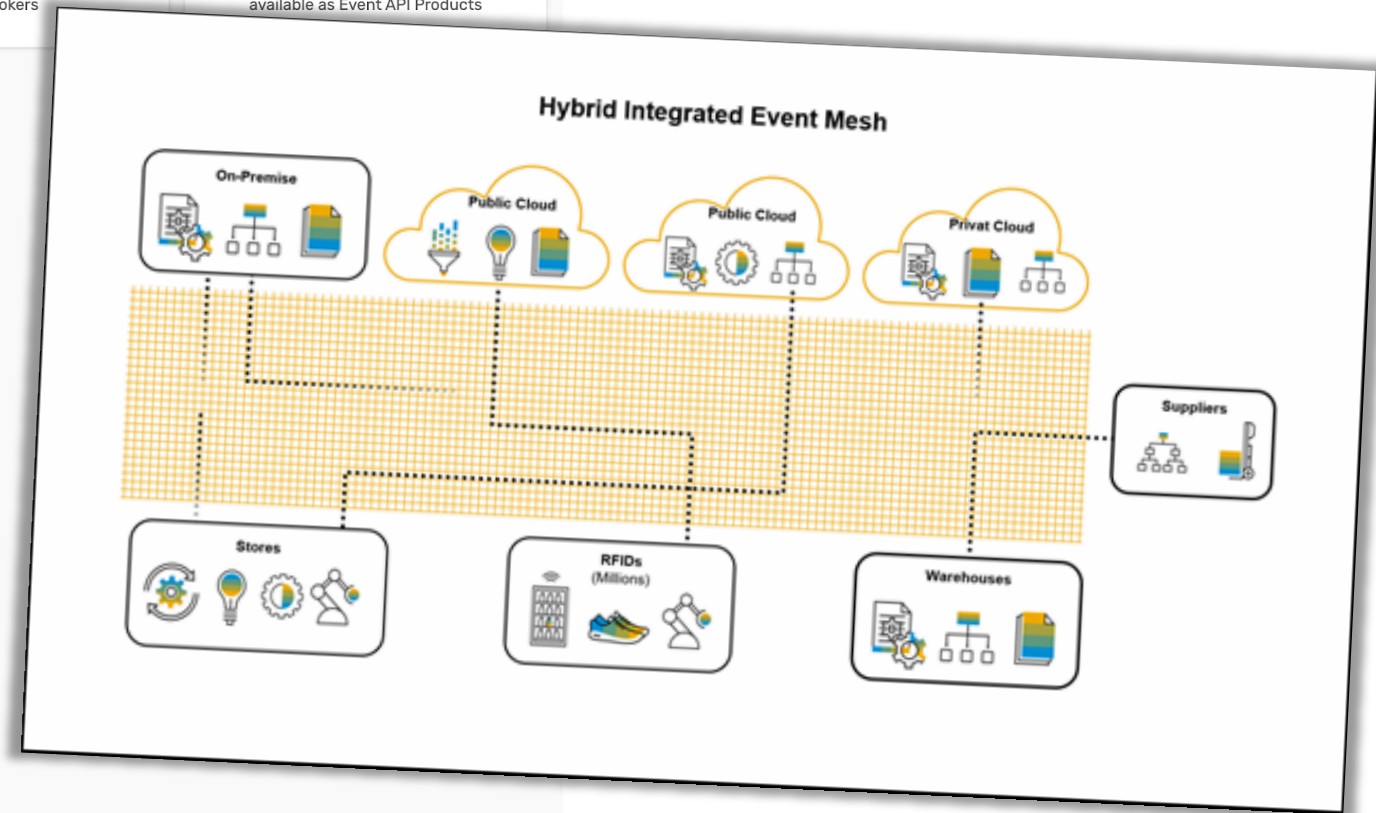
Event Insights

Insights



Insights

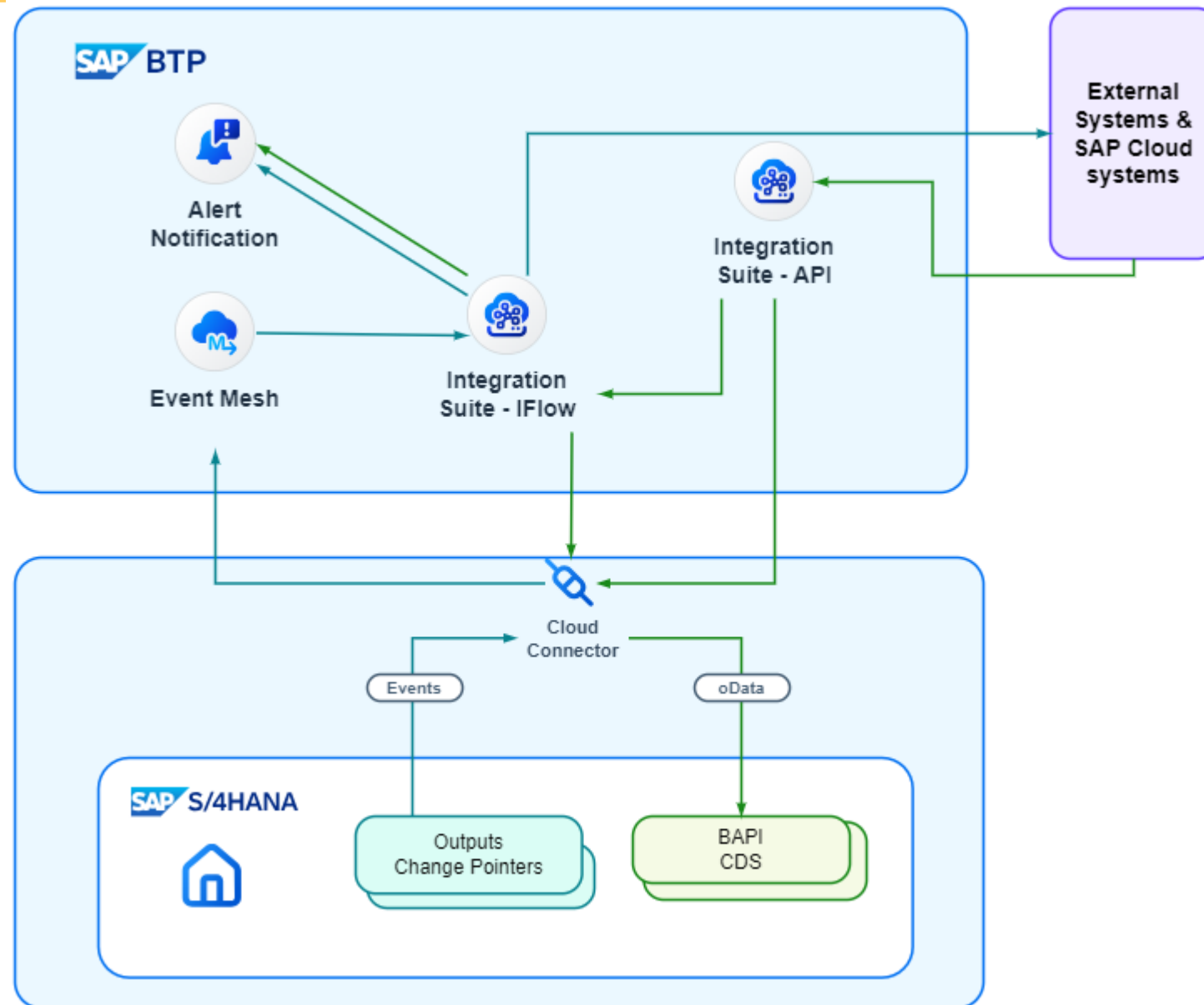
Monitor your Services



SAP Integration Suite – SAP Event Mesh vs Advance Event Mesh

	SAP Event Mesh	Advanced event mesh
Recommended for	SAP's event-driven ecosystem and third-party components around the ecosystem	General purpose including SAP ecosystem
Target scenarios	SAP to everything	SAP to everything and everything to everything
Main use cases	Integration and extension	Integration, event streaming, and event-driven backbone
Numbers	<ul style="list-style-type: none">▪ Message size up to 1 MB▪ 10 GB of storage▪ Guaranteed throughput of 250 KBps	<ul style="list-style-type: none">▪ Message size up to 30 MB▪ 800 GB of storage▪ Up to billions of events per day
Interfaces	REST, JMS, AMQP, MQTT over WebSockets	REST, JMS, AMQP, MQTT, SMF over WebSockets and direct
Deployment	On SAP BTP	Almost anywhere including cloud and on premise
Pricing	Usage-based pricing, starting with zero cost	Various T-shirt sizes, grows with your business
Advanced features	<ul style="list-style-type: none">▪ Facilitated connectivity to selected SAP software back ends▪ Integration into SAP services and solutions	<ul style="list-style-type: none">▪ Opening on payloads▪ Support of transactions▪ Support of replay of events▪ Distributed tracing support (planned upcoming charged add-on capability)

SAP Integration Suite – Our Event Mesh experience



Thank you!



www.blueboot.com



© 2022 SAP SE or an SAP affiliate company. All rights reserved. | Public

