

# SAP Business Technology Platform

Arne Speck, SAP  
May 7, 2024

Public



# What is SAP BTP?

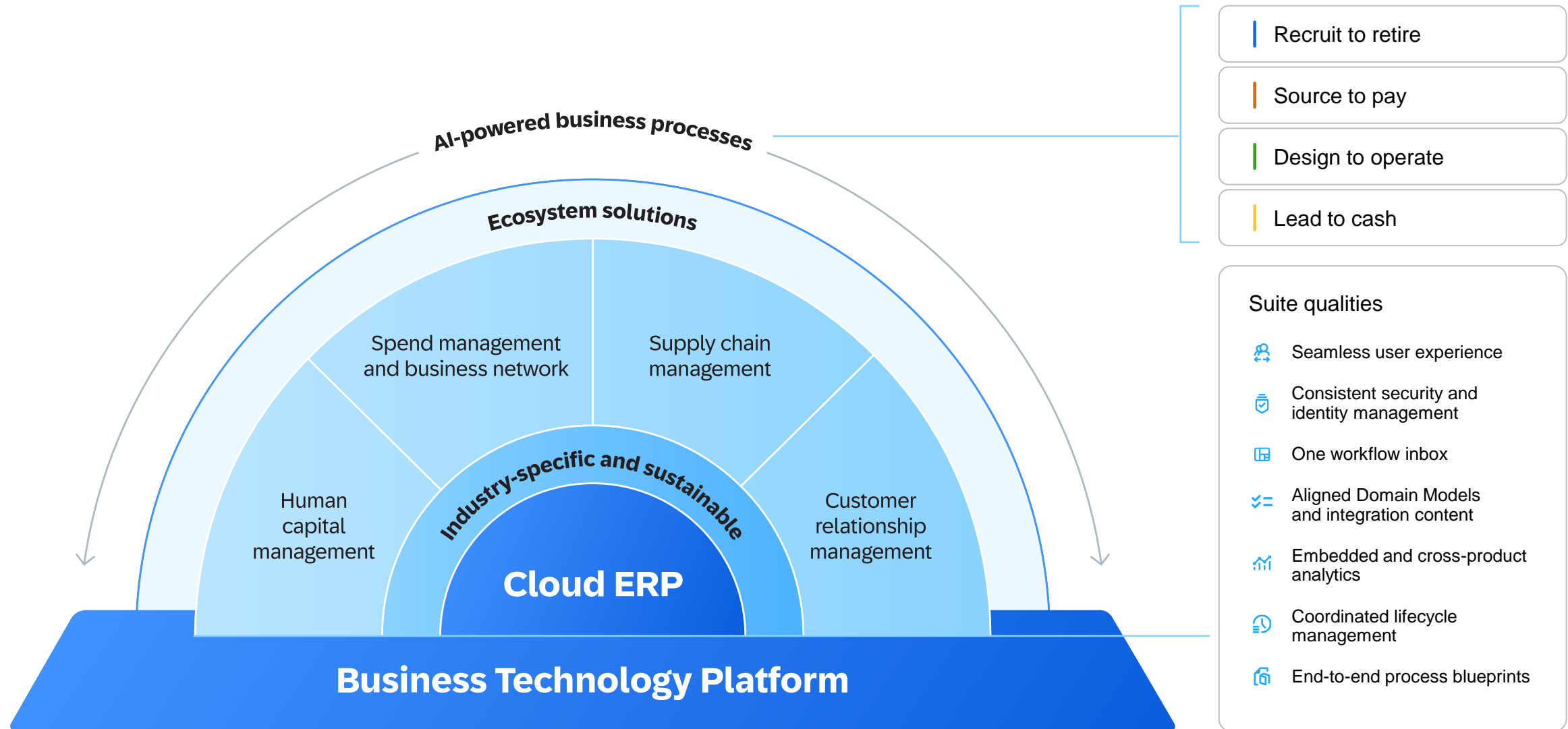
**SAP BTP is the platform that brings together application development, automation, data management, analytics and planning, integration, and AI capabilities into one unified environment optimized for SAP applications**

**It is a comprehensive platform with**

- An intuitive, modern development environment for both, professional IT and citizen and business developers
- Built-in data models, integrations, workflows, app templates, and AI business services
- Self-service data discovery, modeling, planning, and analytics for business users in a governed environment



# SAP BTP is the foundation for an integrated SAP portfolio





**23k+**  
**customers live**  
**on SAP BTP**



# Customer Example: Farys – Smart Water Platform

COMPANY NAME:

Farys

HEADQUARTERS:

Belgium - Gent

INDUSTRY:

Water Utilities

WEBSITE:

[www.farys.be](http://www.farys.be)

NUMBER OF EMPLOYEES:

950



With the Smart Water Platform,  
everything is integrated.

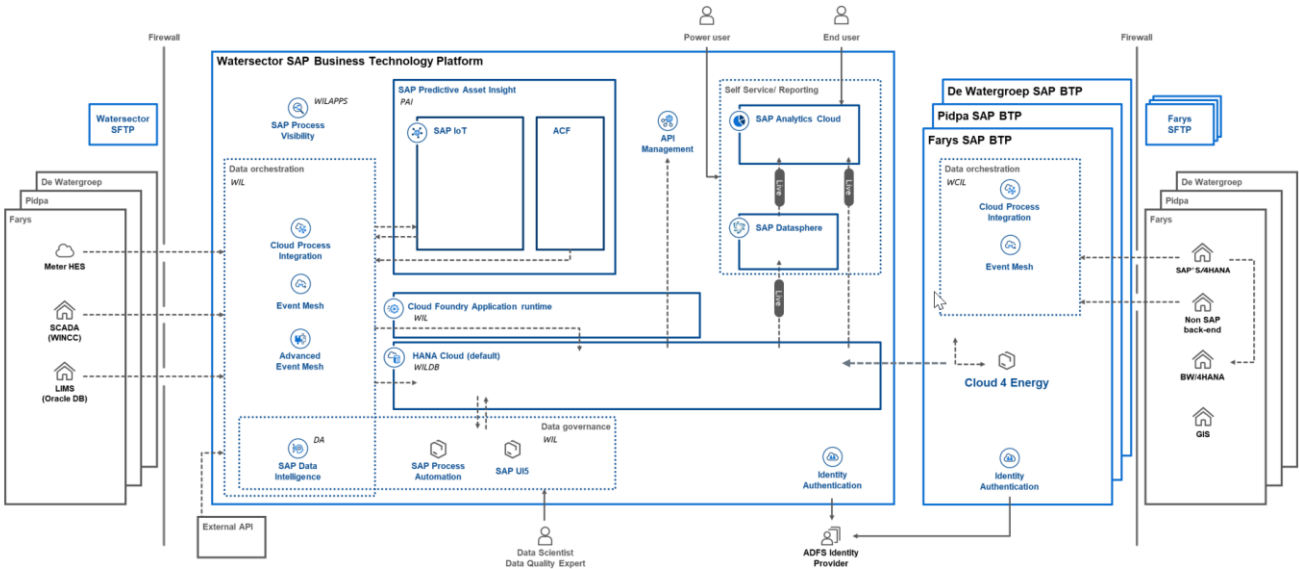
Our data is in one place. It unlocks  
intelligence, simplifies innovation, and  
lowers our total cost of ownership  
compared to our peers.



Inge Opreel  
CIO Farys



## Architecture



## Smart Water Platform

Farys



### CHALLENGE:

Some of the **key challenges the Water Sector is facing** are the high operating cost, lack of market standardization & the absence of a common operating model.

### SOLUTION:

In order to cope with the challenges a new business model was set up: A sector collaboration between three water companies De Watergroep, FARYS and PIDPA to create a **cloud-based, future-proof Smart Meter and Energy Management** system to support a joint mass roll-out of the Smart water meters in with maximum synergy.

### OUTCOME:

Sector collaboration resulted in a sector wide **Smart Water Meter** Program including:

- **Unified and collaborative IT platform** based on SAP Business Technology Platform (BTP)
- **Joint tendering** for market standardization and better terms
- Collaborative project setup and fostering cross-company knowledge sharing
- **Lowering TCO**
- Sector wide Meter Operation Center (Sector MOC)
- **New service designs and improved customer service**
- Unlocking the potential of innovation technologies of a modern **Smart Innovation Platform**

20%

Cost reduction potential thanks to efficiency in administration & efficiency in business operations

2.7 mio

Number of Digital Watermeters to roll out and maintained on SAP BTP

1 day

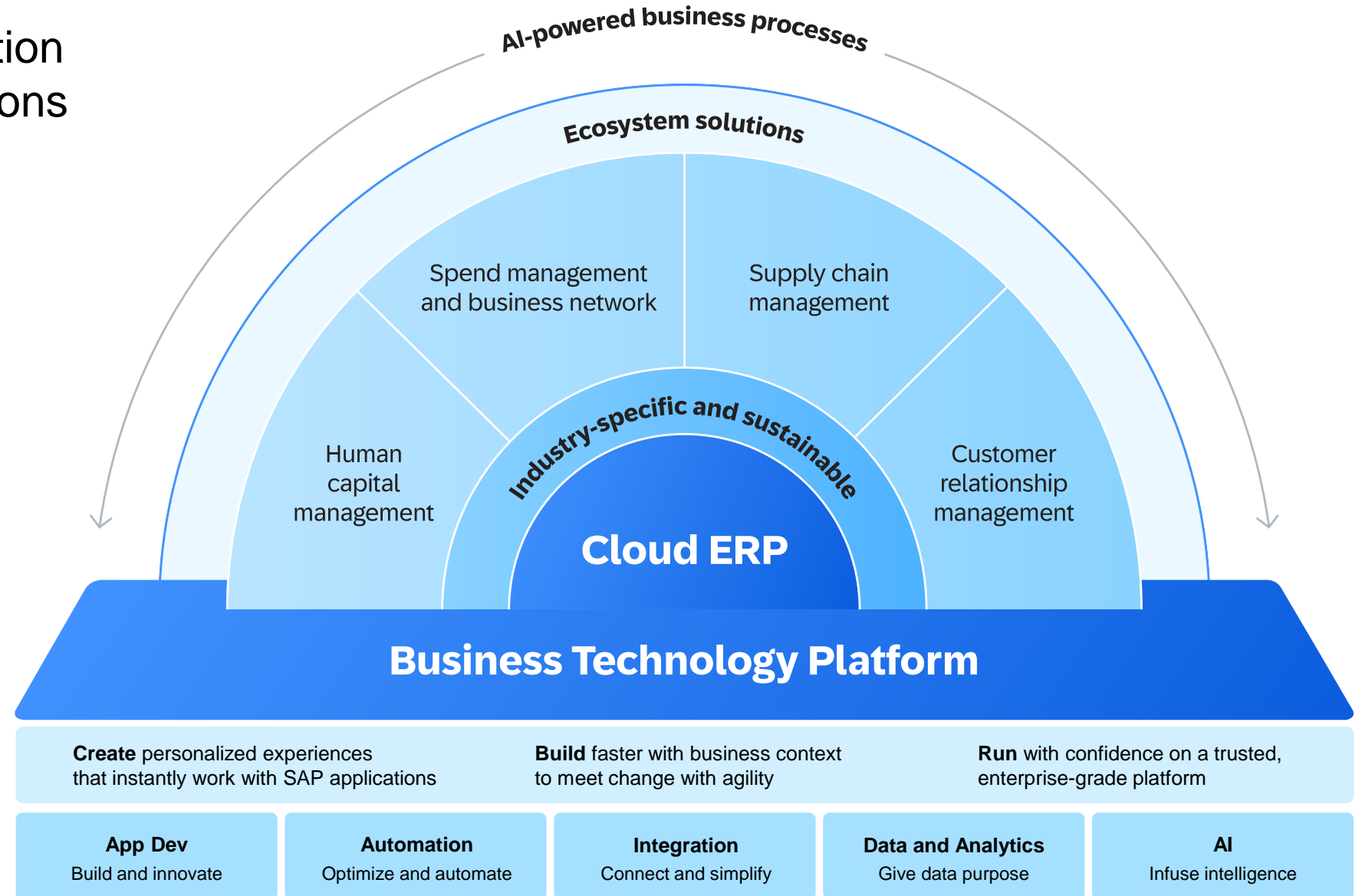
Yearly invoice lead time has been reduced from weeks to just 1 day



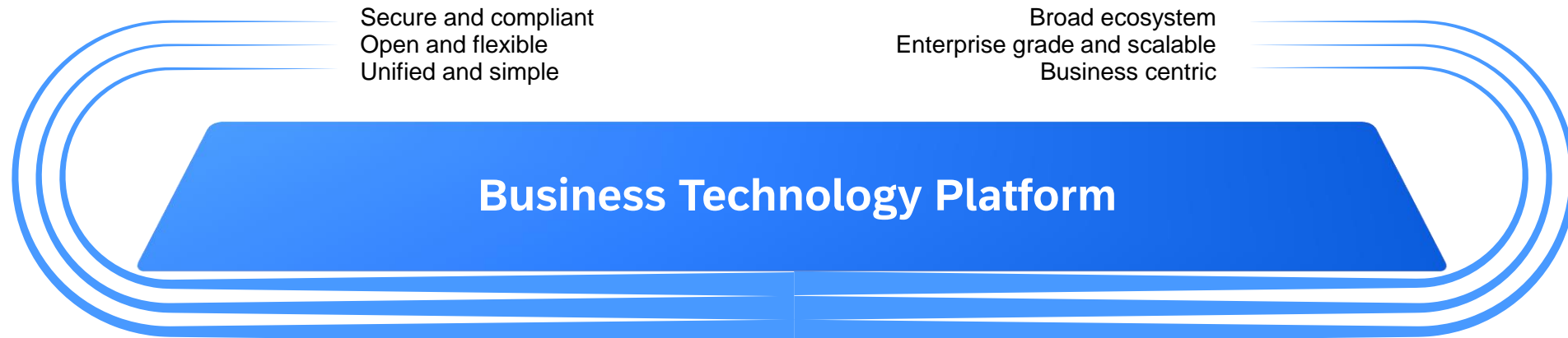
Source: [SAP Innovation Award Initial Pitch Deck](#)

# SAP BTP

Unleash digital innovation  
across business functions



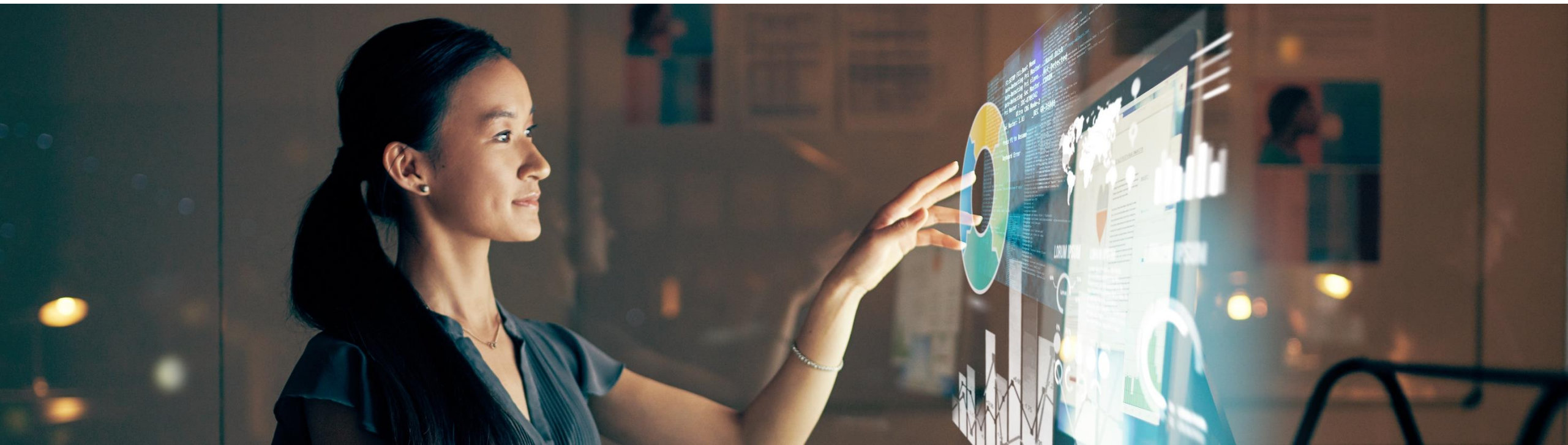
# SAP BTP is **your platform to individualize your business processes**



App Dev	Automation	Integration	Data and Analytics	AI
→ Visual low-code/ no-code experience	→ Workflow management	→ Process integration	→ Analytics and planning	→ Pretrained AI models
→ Pro-code tooling	→ Robotic process automation	→ API-led integration	→ Data management	→ Generative AI and AI workload management
→ Digital experience	→ Process monitoring and analytics	→ Event-driven integration	→ Operational database	→ Business data and context
→ DevOps	→ Automated document processing	→ Hybrid integration	→ Data warehouse and data lake	→ Responsible AI
		→ B2B integration		
		→ Data integration		

# Application Development

## Build and innovate





# Build and innovate

- Achieve a **clean core** by developing **side-by-side extensions** with SAP Build Code on SAP BTP
- Optimize **developer efficiency** with generative AI, productivity tools, governance, and application lifecycle management **for developers of all skill levels**
- **Deliver personalized experiences** through integration and connectivity with SAP and third-party applications



# The Challenge - Application Development Today

**App Definition and Development**

**Database**

**Streaming & Messaging**

**Application Definition & Image Build**

**Continuous Integration & Delivery**

**Orchestration & Management**

**Scheduling & Orchestration**

**Coordination & Service Discovery**

**Remote Procedure Call**

**Service Proxy**

**API Gateway**

**Service Mesh**

**Runtime**

**Cloud Native Storage**

**Container Runtime**

**Cloud Native Network**

**Provisioning**

**Automation & Configuration**

**Container Registry**

**Security & Compliance**

**Key Management**

**Platform**

**Certified Kubernetes - Distribution**

**Certified Kubernetes - Hosted**

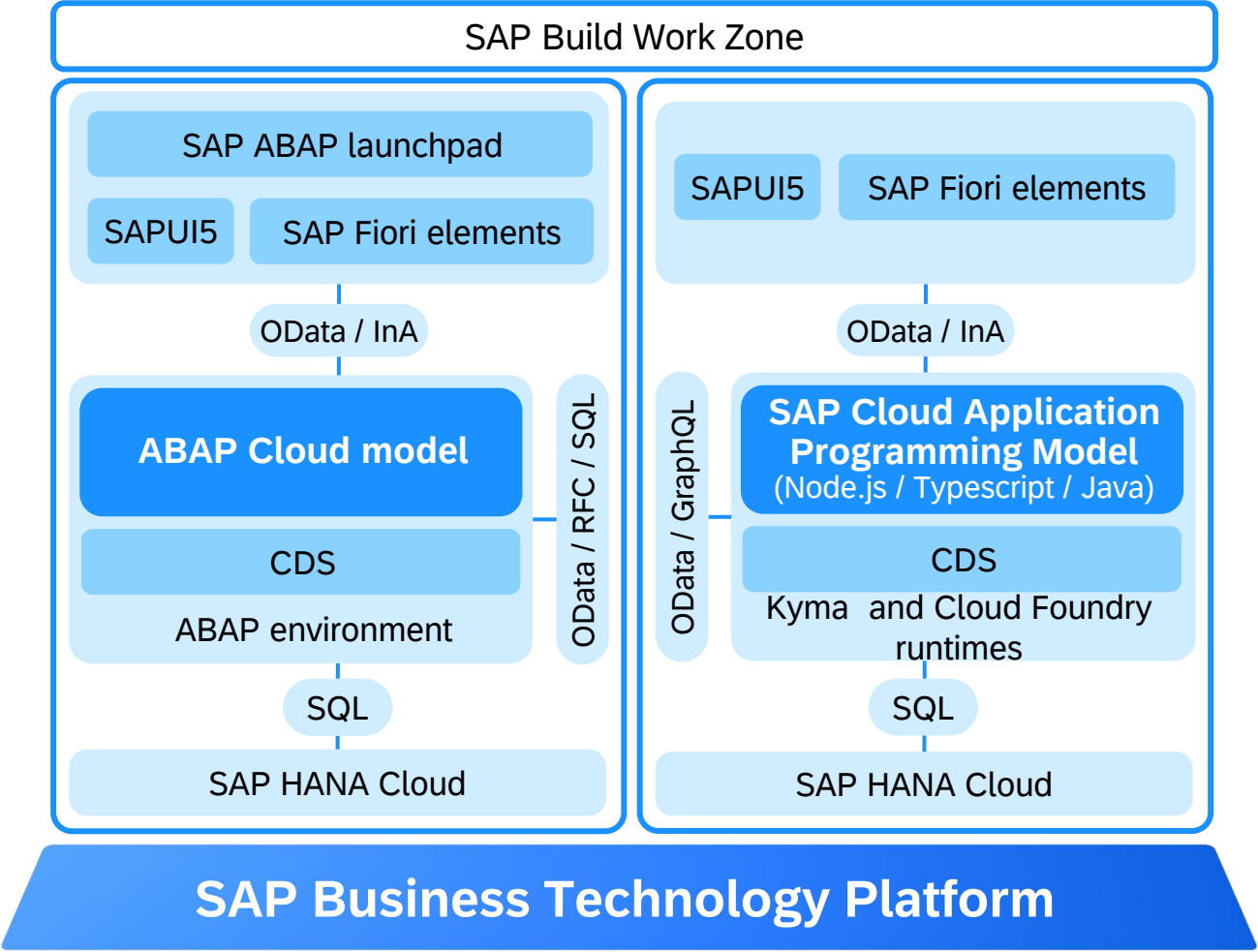
**Certified Kubernetes - Installer**

**PaaS/Container Service**

**Observability and Analysis**

**Monitoring**

# Master the building blocks



# SAP Build Code

Application development powered by generative AI, optimized for Java and JavaScript developers

**Simplified** developer experience  
to drive productivity



App development powered by generative AI

Turnkey development solution including  
SAP-recommended best practices

Choice of programming language (Java, -Script)  
and IDE (built-in or Visual Studio Code)

**Optimized**  
for SAP software development



Built-in integration with  
SAP and third-party systems

Trusted security for authentication,  
authorization, and data protection

Extensibility for SAP S/4HANA and other systems

**Enhanced** fusion development  
between IT and business



Secure collaboration with  
low-code SAP Build solutions

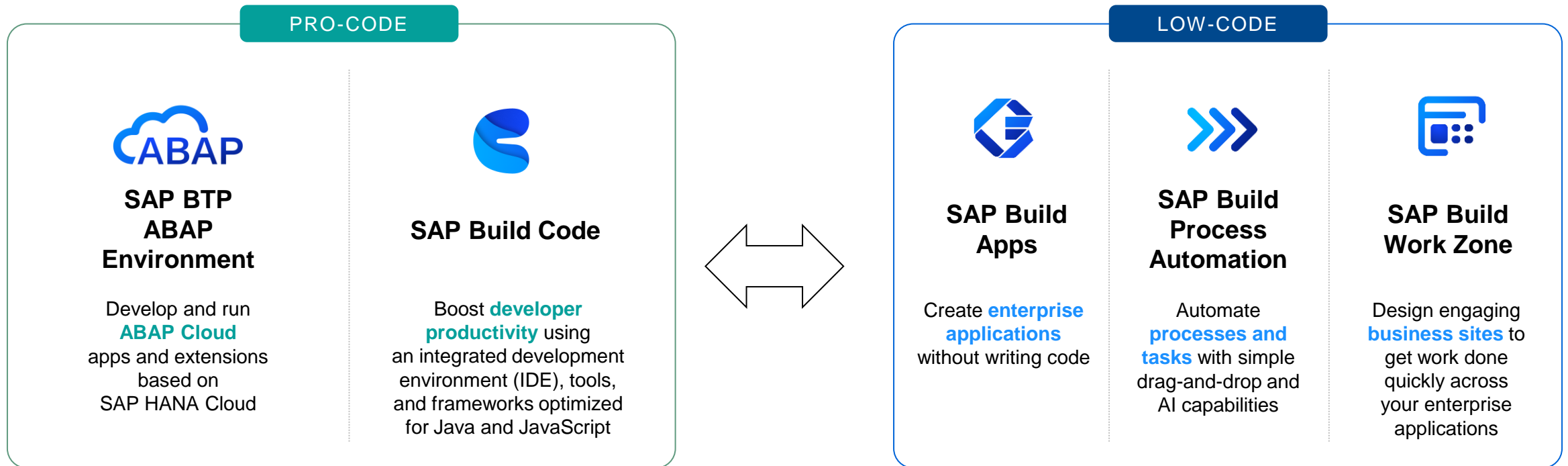
App composability enabling developer flexibility

Interoperability with ABAP



# For business and professional developers

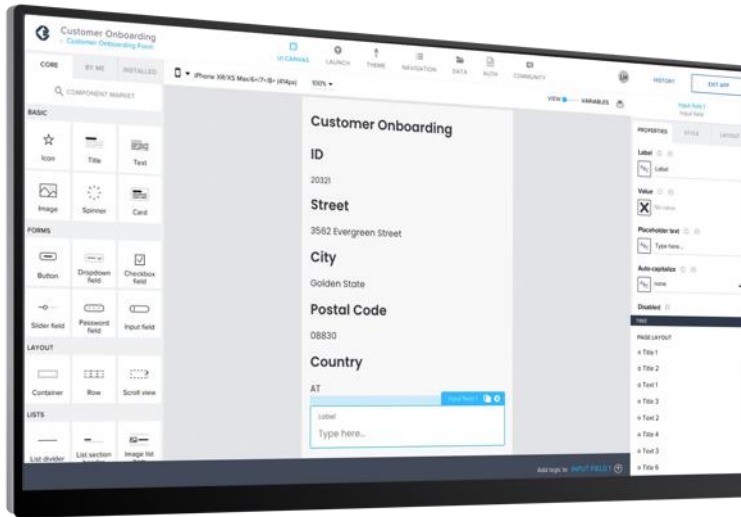
## With low-code and pro-code tools



# SAP Build solutions

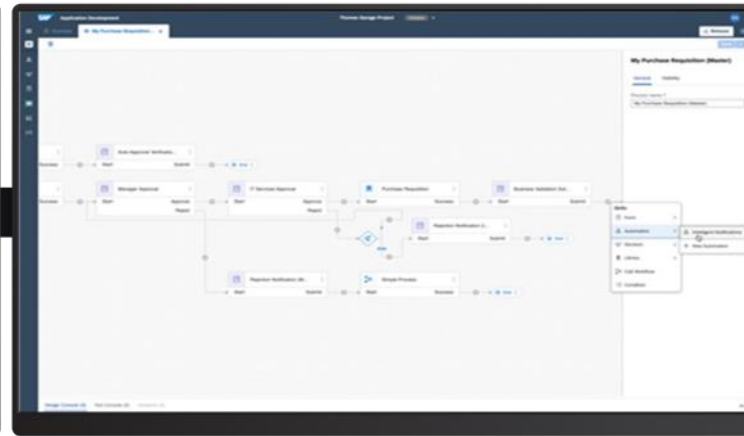
Create enterprise apps, automate processes, and design business sites with drag-and-drop simplicity

Create apps



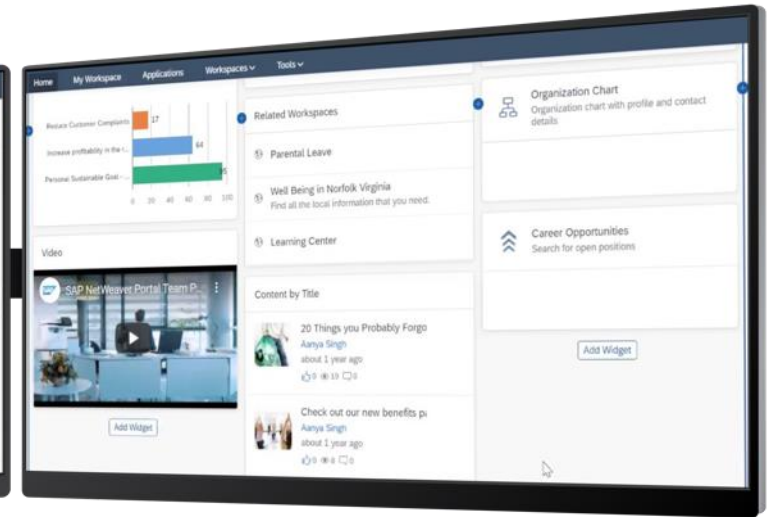
SAP Build Apps

Automate processes



SAP Build Process Automation

Design business sites



SAP Build Work Zone

Build Visually

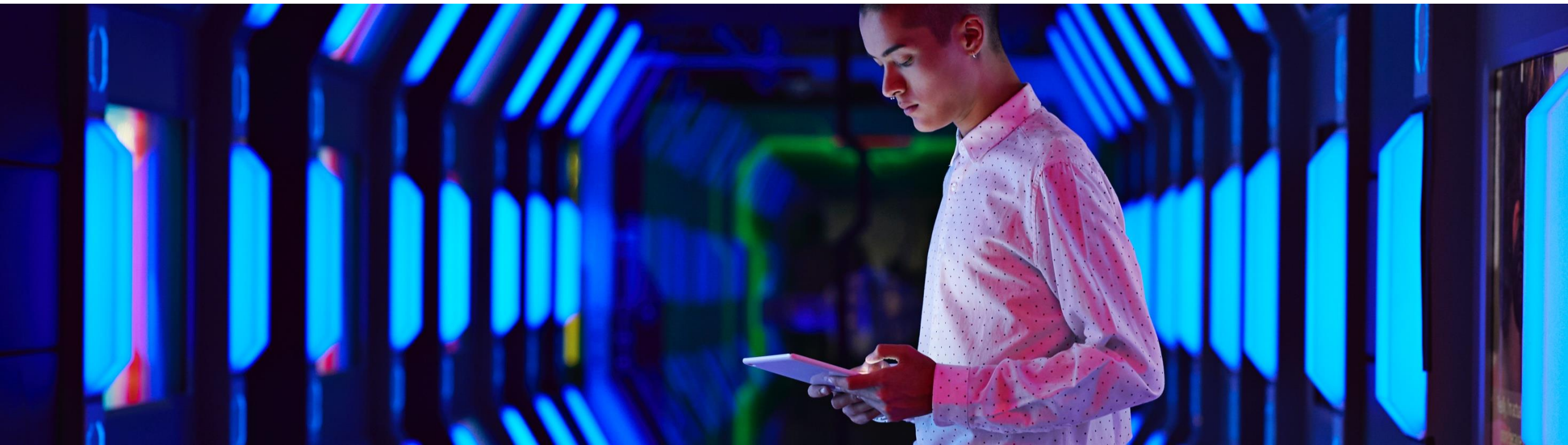
Integrate Smoothly

Collaborate Effectively

SAP Business Technology Platform

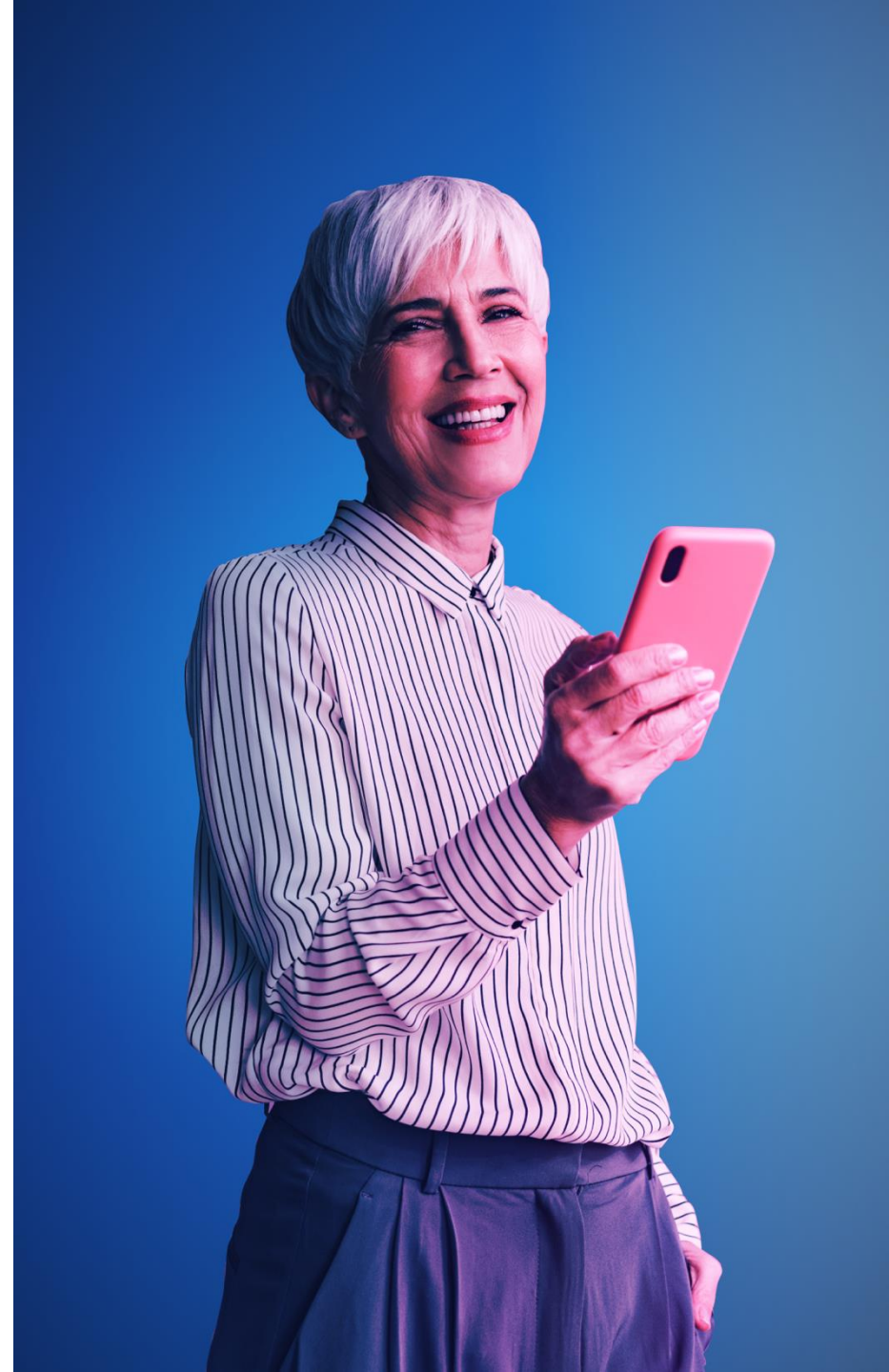
# Automation

## Optimize and automate



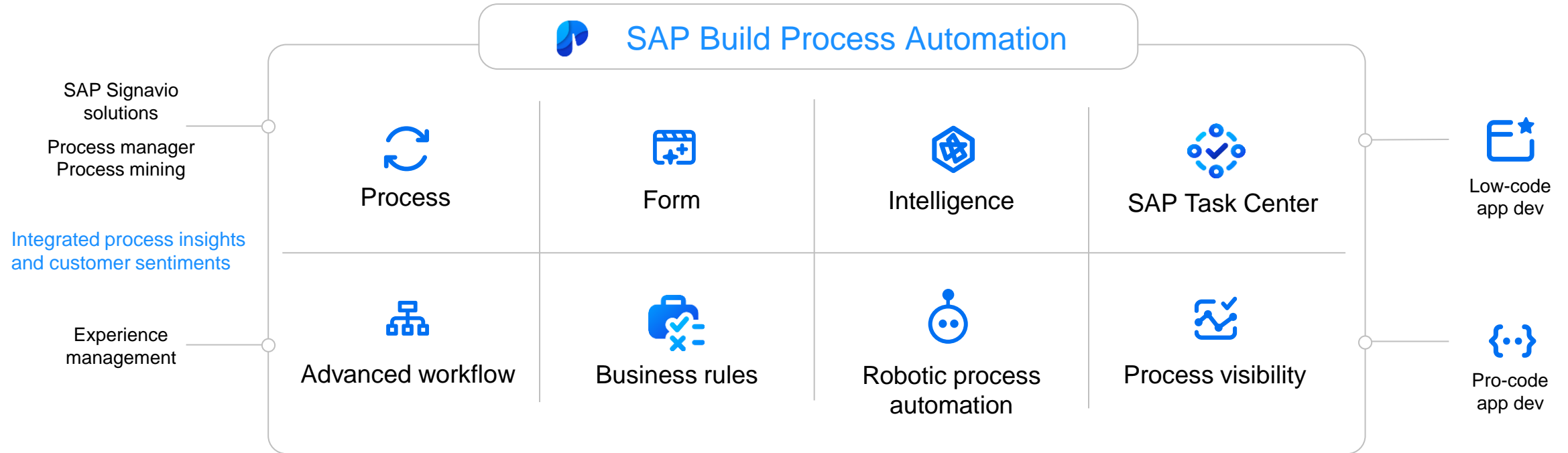
# Optimize and automate

- **Automate visually**  
Simplify automation with drag-and-drop and AI capabilities.
- **Integrate smoothly**  
Develop faster using built-in workflows, bots, and connectors for SAP and third-party systems.
- **Collaborate more securely**  
Enable fusion team development in a more secure and agile fashion.





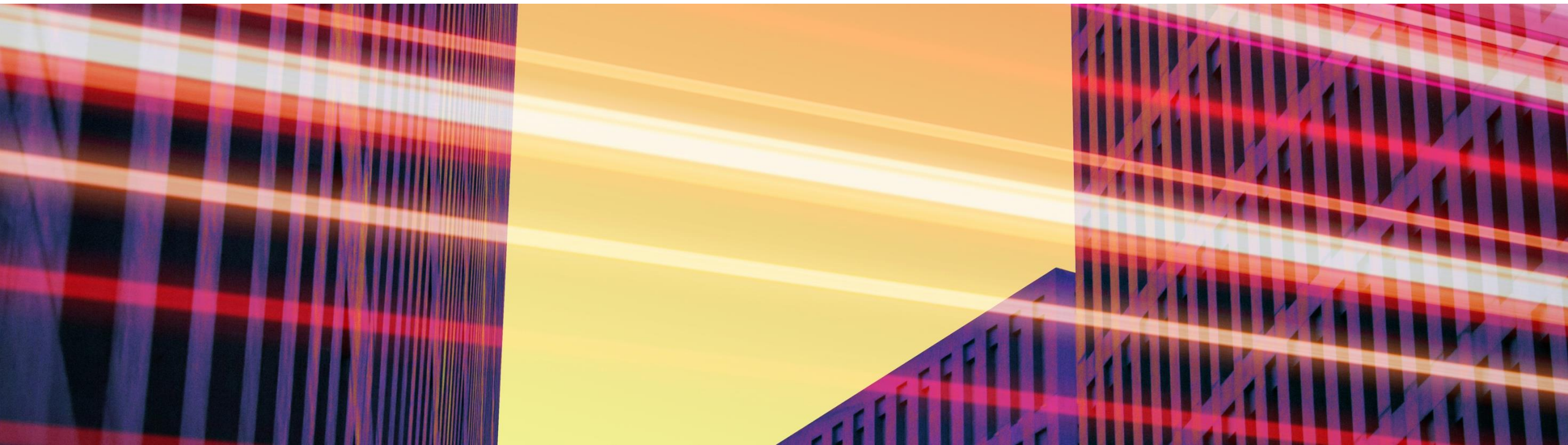
# SAP Build Process Automation



✓ Hundreds of built-in automations | API complexity is hidden

# Integration

Integrate everything to innovate

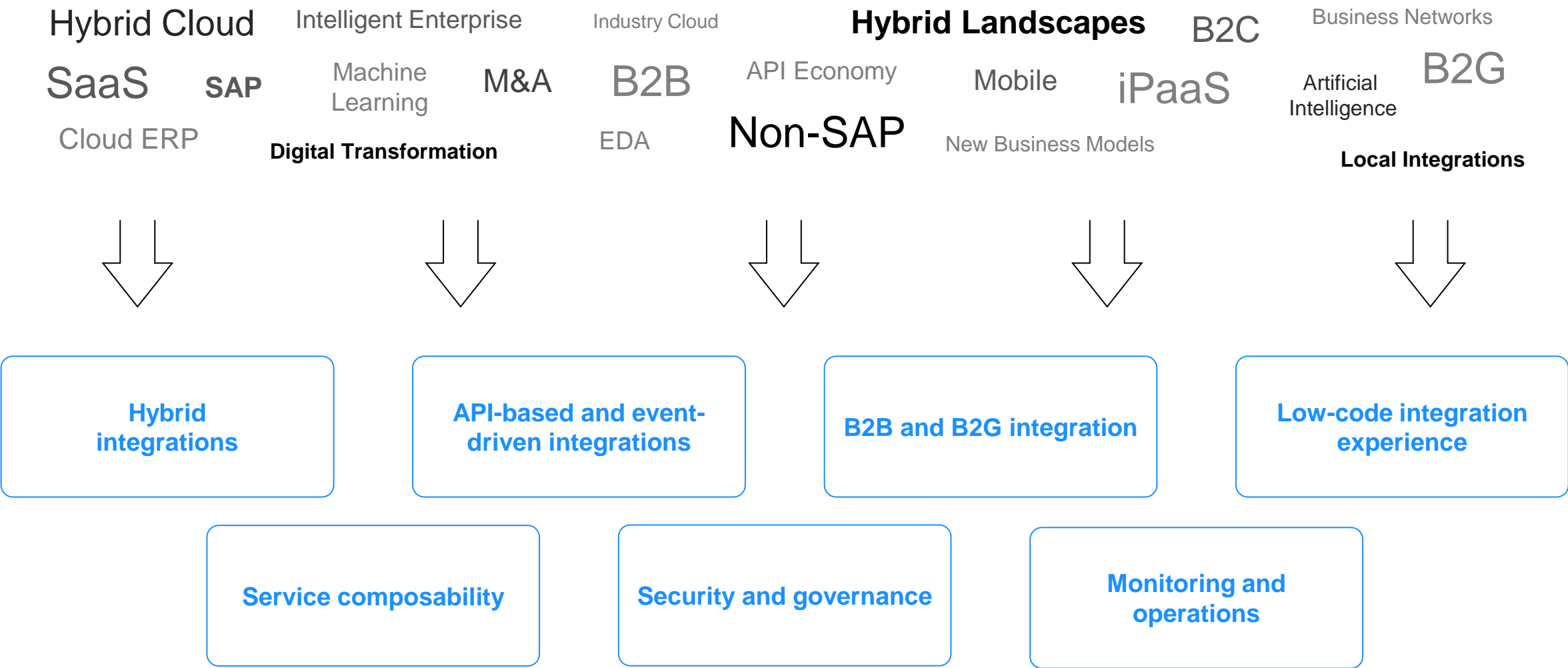


# Integrate everything to innovate now

- **Integrate everything to accelerate innovation** with a single, robust solution for multiple integration modes and enterprise-grade capabilities.
- **Accelerate connectivity for faster time to value** with thousands of proven integrations built and maintained by SAP, while applying a systematic approach to integration that includes built-in support for best practices.
- **Connect everyone with automated processes** in real-time, providing situational awareness, scale, and high performance, regardless of organizational boundaries.



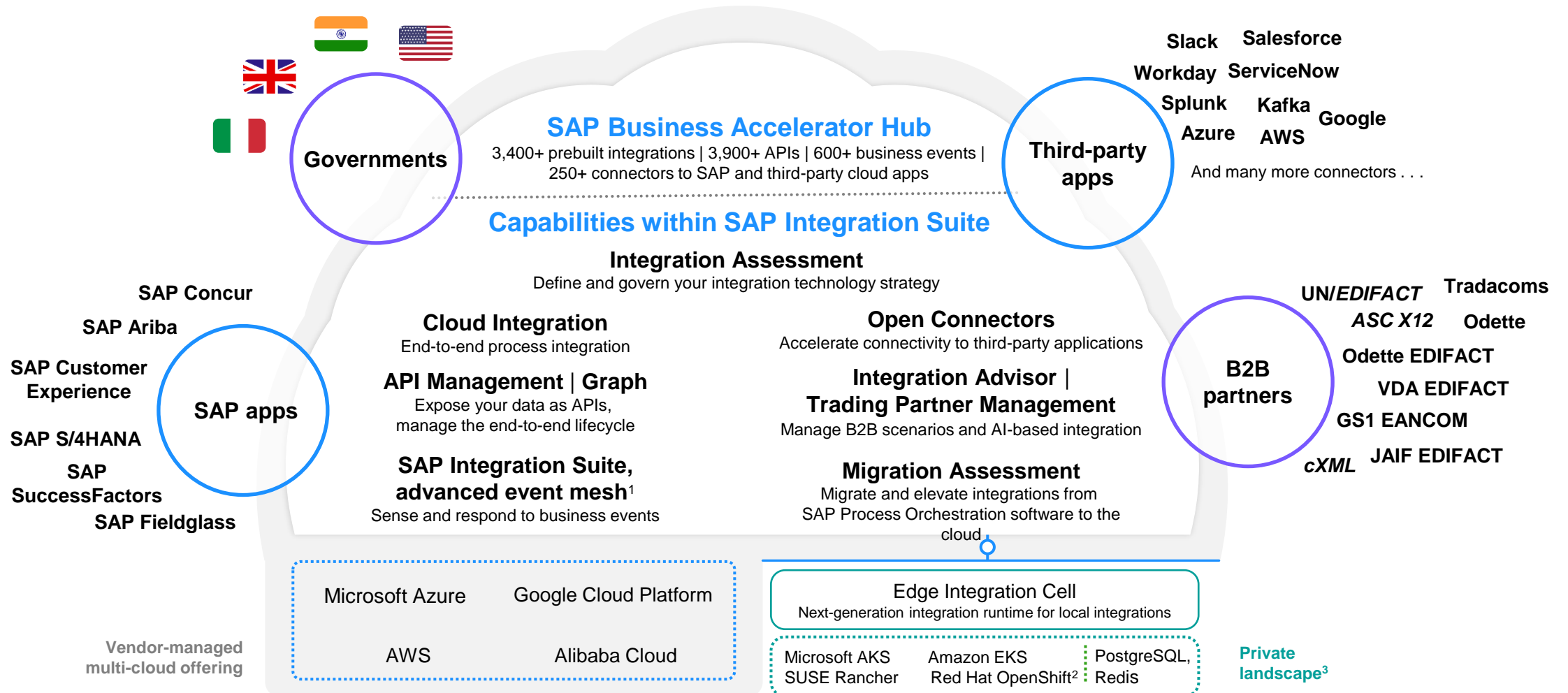
# Quickly evolving hybrid landscapes





# SAP Integration Suite

## SAP's hybrid integration platform for the Intelligent Enterprise



1) Optional separate license    2) Part of the road map, subject to change    3) Private landscape corresponds to on premise or private cloud

# Data and Analytics

## Give data purpose



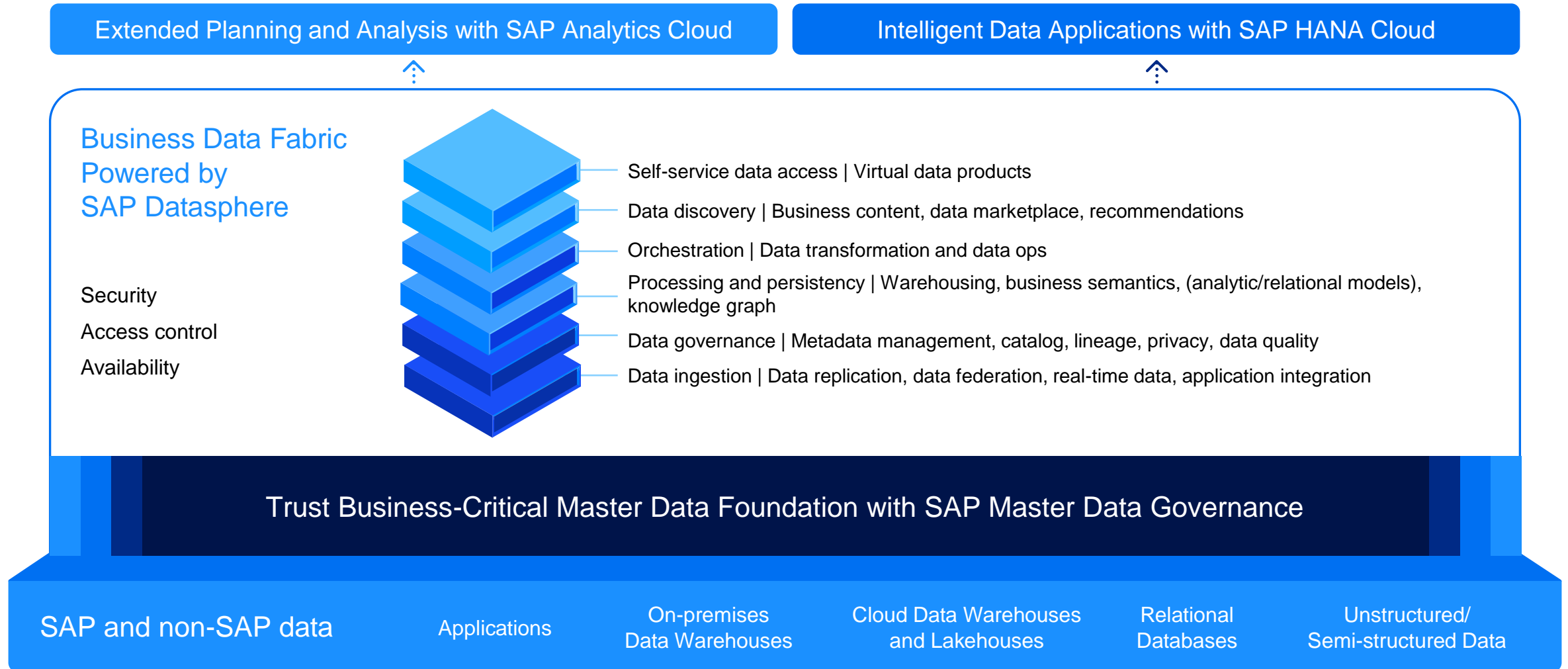


# SAP data and analytics

- **Deliver semantically rich, trusted data** to every data consumer while keeping business context and logic intact.
- **Empower developers to build apps** that utilize generative AI, are context-aware, and connect to vital business data.
- **Connect finance, HR, operational, and strategic planning** with data and analytics on a single stack.



# SAP Datasphere is the foundation for a business data fabric architecture





# SAP data and analytics solutions

## Planning and analytics

### Extended planning and analytics

Take enterprise planning to the next level with an optimized, vertically integrated consumption layer for planning and analytics workloads.



**SAP Analytics Cloud**

## Data management and data warehousing

### Business data fabric

Deliver an integrated, semantically rich data layer over underlying data landscapes to provide smooth and scalable access to data without duplication.



**SAP Datasphere**



**SAP Master Data Governance**

## Operational databases

### Intelligent data applications

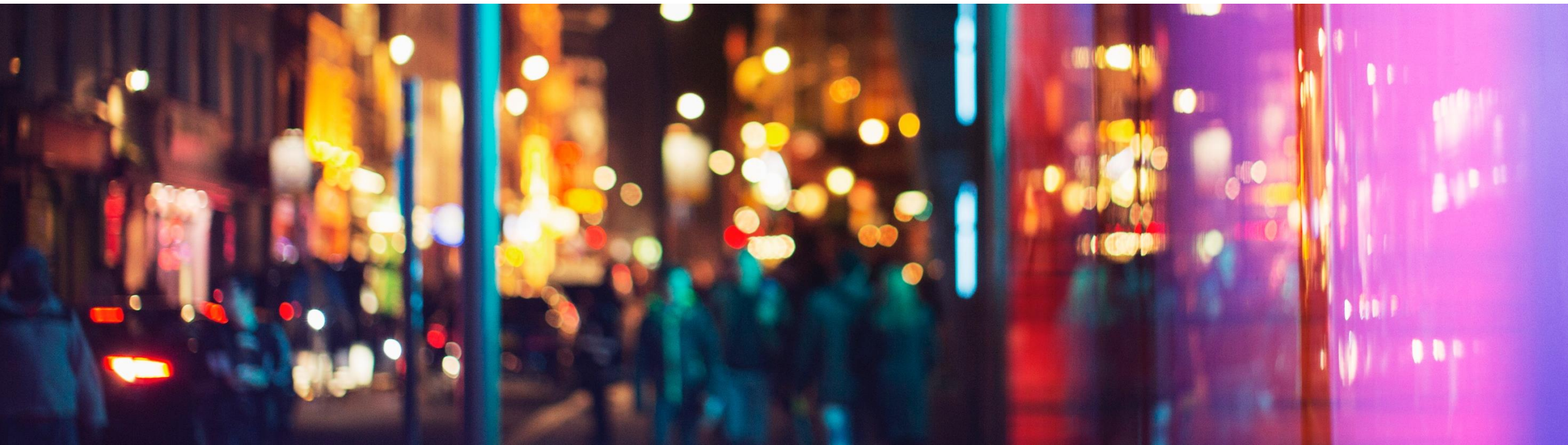
Build apps leveraging analytical capabilities (machine learning, graph, spatial), combining historical and real-time data.



**SAP HANA Cloud**

# Artificial Intelligence (AI)

Infuse AI into your SAP applications and extensions



# Infuse AI into your SAP applications and extensions

With **SAP Business AI**, we build a system of intelligence with **three core principles**:

- **Relevant**

The most relevant AI delivered in the context of your business processes

- **Reliable**

Uniquely reliable AI trained on the industry's broadest business data sets

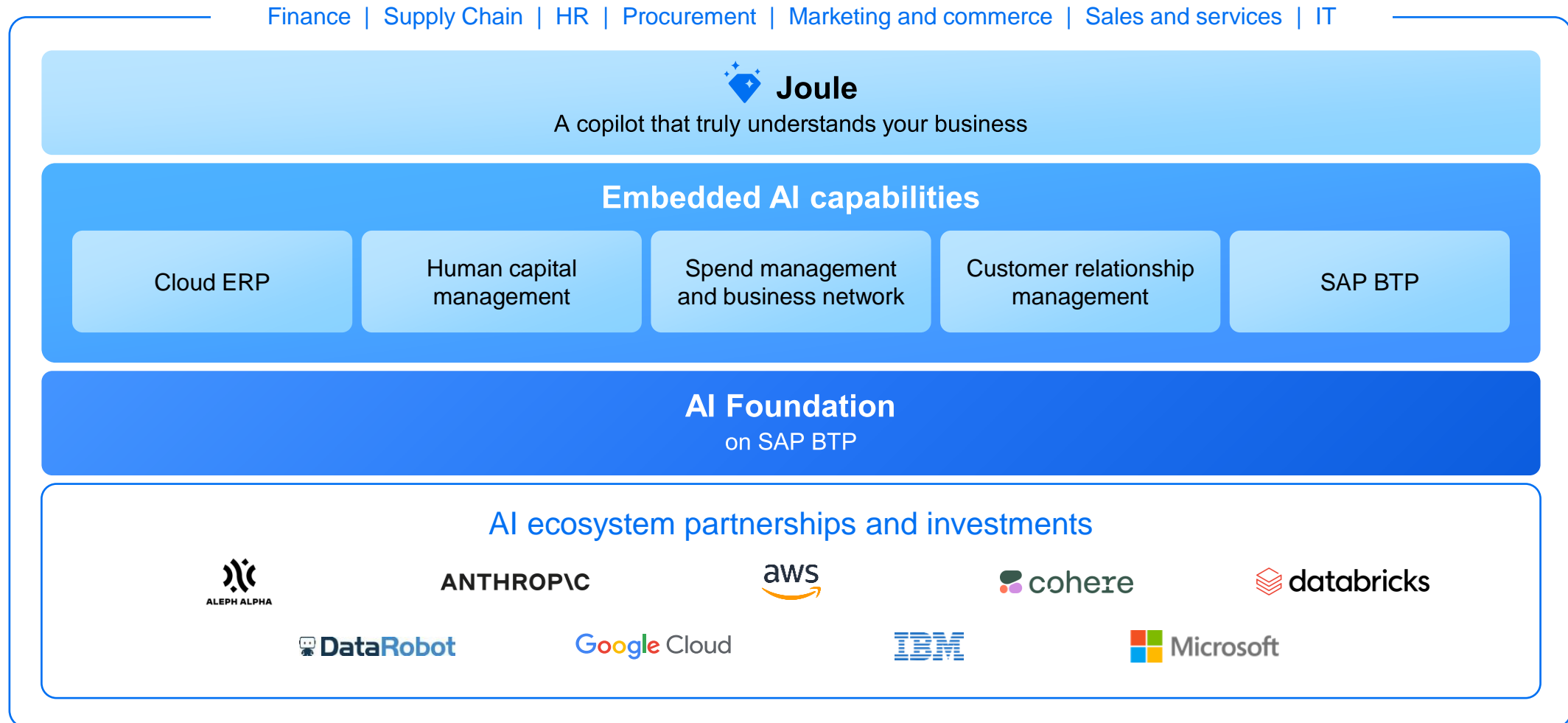
- **Responsible**

AI built on leading ethics and data privacy standards



# SAP Business AI initiative

Relevant. Reliable. Responsible.





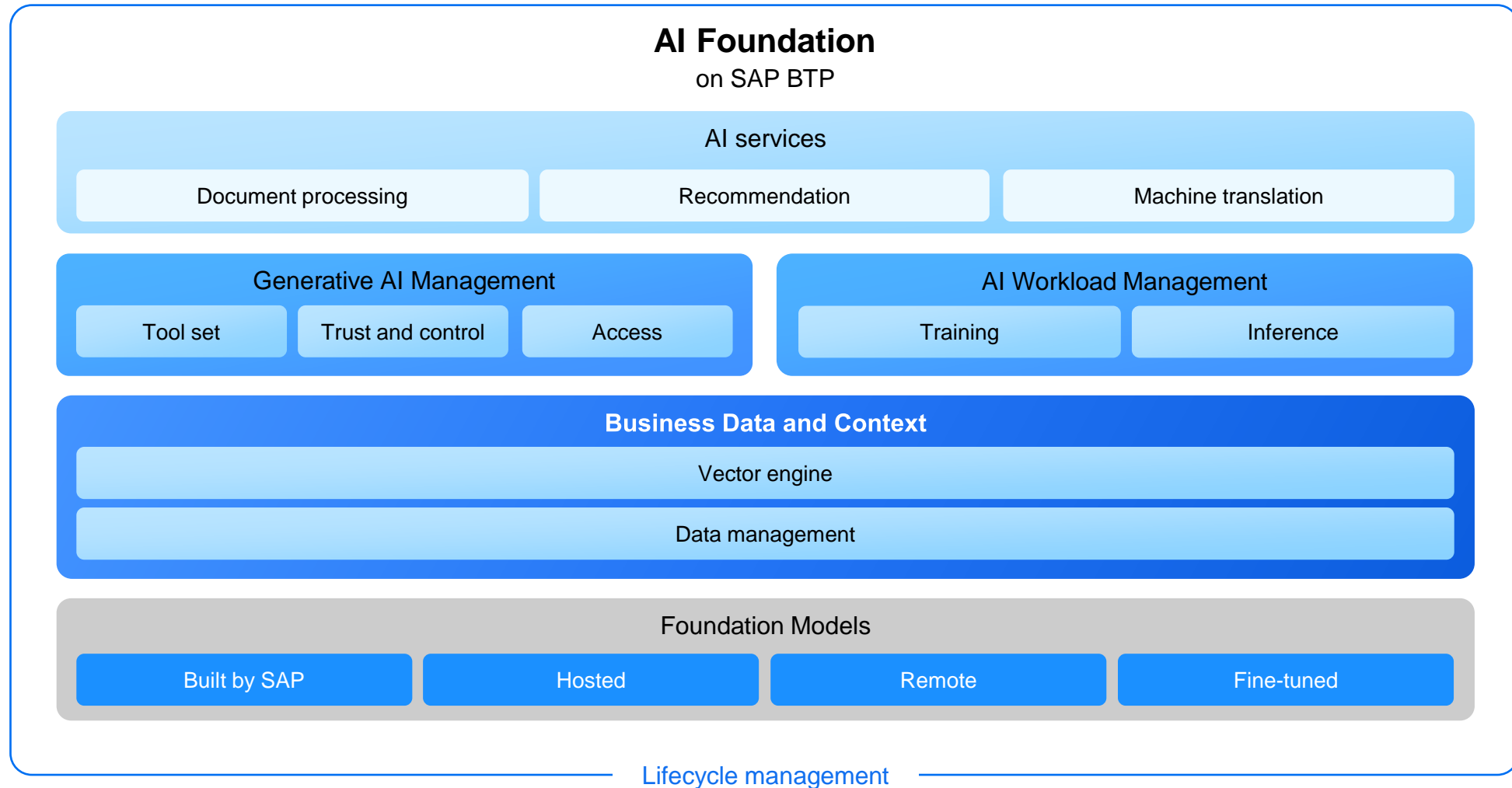
# SAP Business AI infused across the SAP product portfolio\*

AI is already a central, integrated capability of our enterprise applications and business technology, used by tens of thousands of our cloud customers.

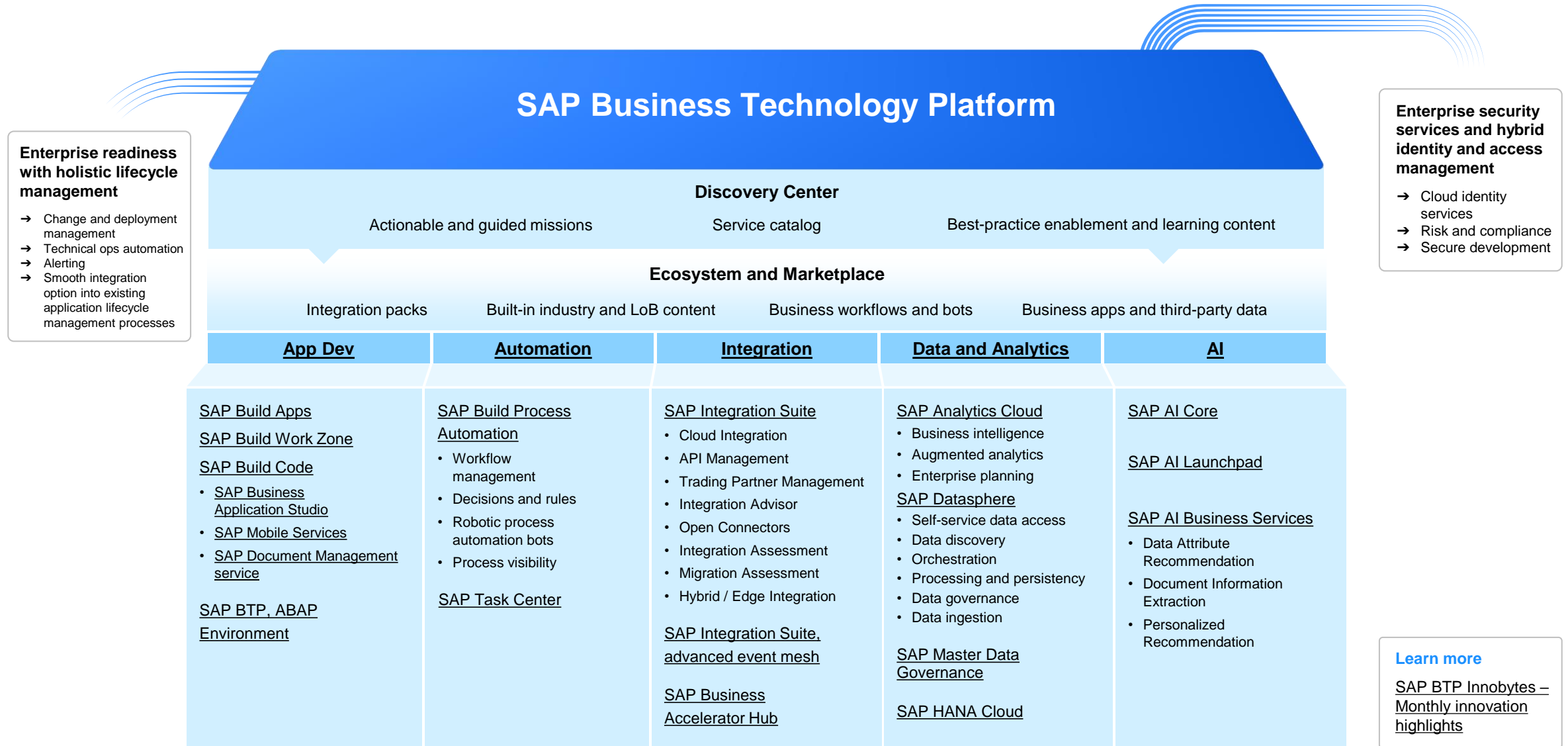
Embedded AI capabilities				
Cloud ERP	Human capital management	Spend management and business network	Customer relationship management	SAP BTP
<b>&gt;US\$1.5 million</b> annual savings	<b>4.2 million</b> learners every month	<b>€440 million</b> annual savings	<b>1.9 billion</b> events scored monthly	<b>10,000</b> interfaces and scenarios
SAP Cash Application software	Learning recommendations service for SAP SuccessFactors solutions	Concur Invoice solution	SAP Customer Data Cloud solutions – intrusion detection	Integration Advisor capability within SAP Integration Suite

\*The listed examples are a subset of our complete portfolio.

# A comprehensive set of services for AI developers on SAP BTP



# Cloud services for SAP BTP



# SAP BTP – Predefined business content

*With **SAP BTP** you will not start from scratch, but with **predefined business content**.*

---



**230+** Task automations (bots)



**>13800** CDS views



**85+** Live Processes for BUILD



Covering **600+** SAP application **events**



**100+** Business Process Templates for BUILD



SAP Cloud **SDK**



**120** decision and business **rules**



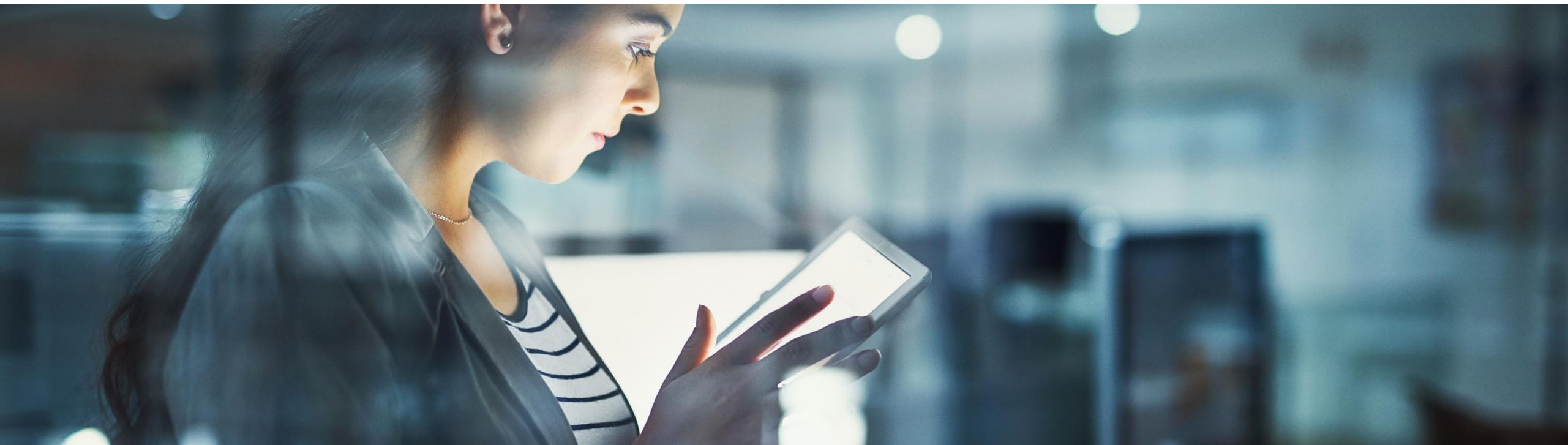
Open connectors (aligned APIs)  
to **250** third-party products









**3400+** integration scenarios



# Getting Started with SAP Business Technology Platform



# Where to start? How SAP helps to deliver successful outcomes

<b><u>SAP BTP Guidance Framework</u></b>	<b><u>SAP Discovery Center</u></b>	<b><u>SAP Learning</u></b>	<b><u>Onboarding resource center for SAP BTP</u></b>	<b><u>Free tier and trial</u></b>	<b><u>Road map</u></b>
<ul style="list-style-type: none"><li>• Discover your compass for architecting, implementing, and operating solutions on SAP BTP</li><li>• Your <u>central access point</u> for:<ul style="list-style-type: none"><li>– Decision guides</li><li>– Reference architectures</li><li>– Methodologies</li><li>– Best practices</li><li>– And more</li></ul></li></ul>	<ul style="list-style-type: none"><li>• Realize the use cases as a mission</li><li>• Be inspired by <u>customer stories</u></li><li>• Explore reference architectures</li><li>• Analyze cost with an <u>estimator</u></li><li>• Gain more insights into <u>road maps</u> and <u>service plans</u></li></ul>	<ul style="list-style-type: none"><li>• Develop your SAP skills for free, anywhere, anytime, and at your own pace at <u>learning.sap.com</u></li><li>• Access more than 100 SAP Learning Journeys for <u>SAP BTP</u> and <u>more</u></li><li>• Start your journey with <u>Discovering SAP Business Technology Platform</u></li></ul>	<ul style="list-style-type: none"><li>• Obtain access to your services</li><li>• Be empowered with proper governance and structure</li><li>• Highlight best practices and things to consider</li><li>• Gain helpful assets and resources for self-service guidance</li></ul>	<ul style="list-style-type: none"><li>• Find the best try-to-buy solution for your situation and role</li><li>• Start developing – check out the <u>mission catalog</u></li><li>• Be productive with a simple upgrade with free-tier service plans</li><li>• Get support from <u>SAP Community</u></li><li>• Access <u>SAP Discovery Center</u></li></ul>	<ul style="list-style-type: none"><li>• Learn how road maps from SAP support the journey to the future SAP product portfolio</li><li>• Check out the latest road map for SAP BTP for upcoming platform innovations</li></ul>
					
Scan this code to learn more	Scan this code to learn more	Scan this code to learn more	Scan this code to learn more	Scan this code to learn more	Scan this code to learn more

Connect.  
Automate.  
Innovate.

**Let's Get Started.**

# Thank you.

Contact information:

**Arne Speck**

SAP BTP Product Management

[Arne.Speck@sap.com](mailto:Arne.Speck@sap.com)

