

# Next-Generation Hybrid Integrations with SAP Integration Suite & Edge Integration Cell

Finny Babu

Lead Product Manager, SAP Integration Suite

May 2024

Public



# Disclaimer

The information in this presentation is confidential and proprietary to SAP and may not be disclosed without the permission of SAP. Except for your obligation to protect confidential information, this presentation is not subject to your license agreement or any other service or subscription agreement with SAP. SAP has no obligation to pursue any course of business outlined in this presentation or any related document, or to develop or release any functionality mentioned therein.

This presentation, or any related document and SAP's strategy and possible future developments, products and or platforms directions and functionality are all subject to change and may be changed by SAP at any time for any reason without notice. The information in this presentation is not a commitment, promise or legal obligation to deliver any material, code or functionality. This presentation is provided without a warranty of any kind, either express or implied, including but not limited to, the implied warranties of merchantability, fitness for a particular purpose, or non-infringement. This presentation is for informational purposes and may not be incorporated into a contract. SAP assumes no responsibility for errors or omissions in this presentation, except if such damages were caused by SAP's intentional or gross negligence.

All forward-looking statements are subject to various risks and uncertainties that could cause actual results to differ materially from expectations. Readers are cautioned not to place undue reliance on these forward-looking statements, which speak only as of their dates, and they should not be relied upon in making purchasing decisions.

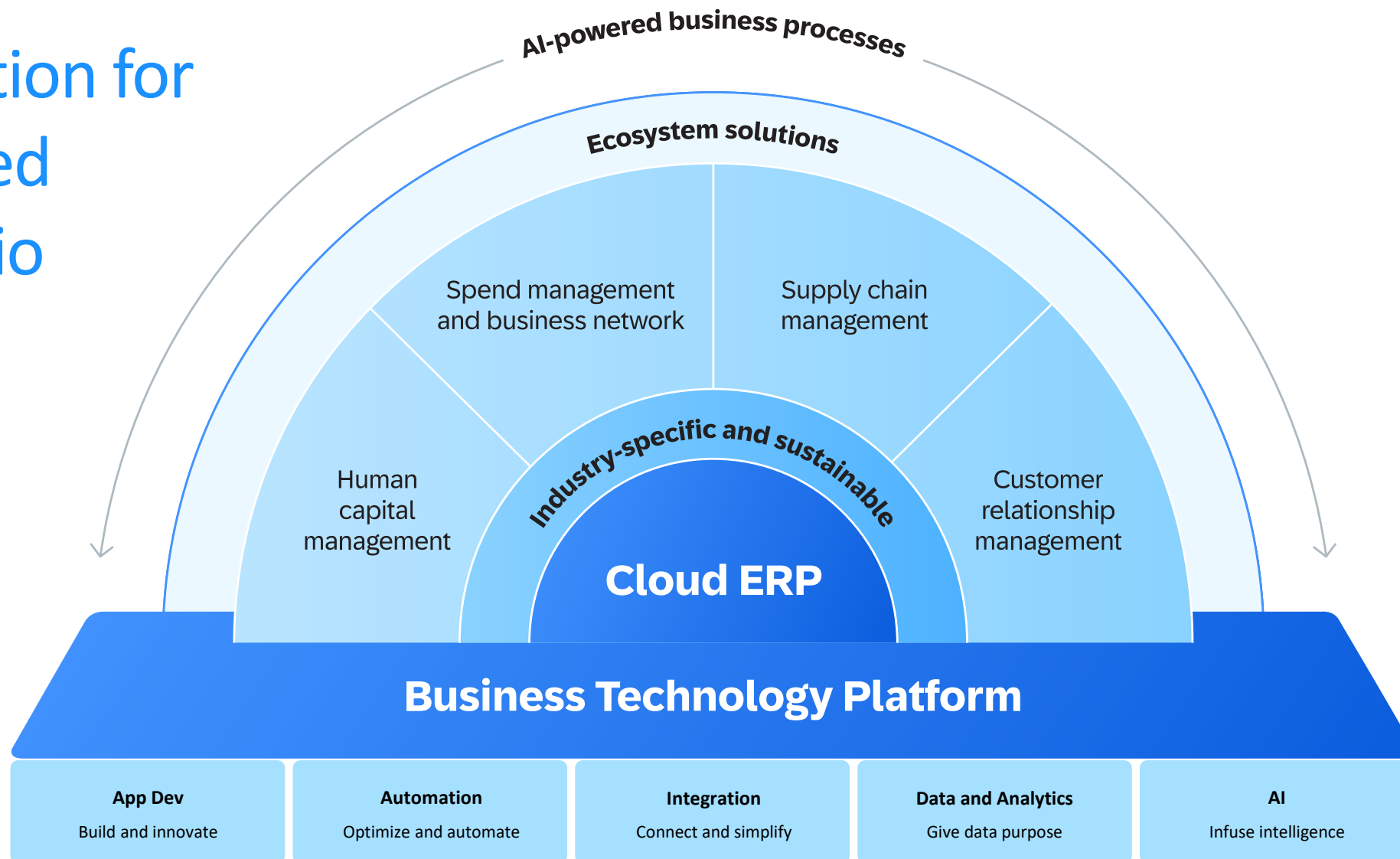
## Roadmap Disclaimer

Any roadmaps shown in this presentation are for informational purposes only. The items, dates and timing within such roadmaps are subject to change or delay and the continued development or release of a project on the roadmaps is at the sole discretion of SAP.

# SAP Integration Suite

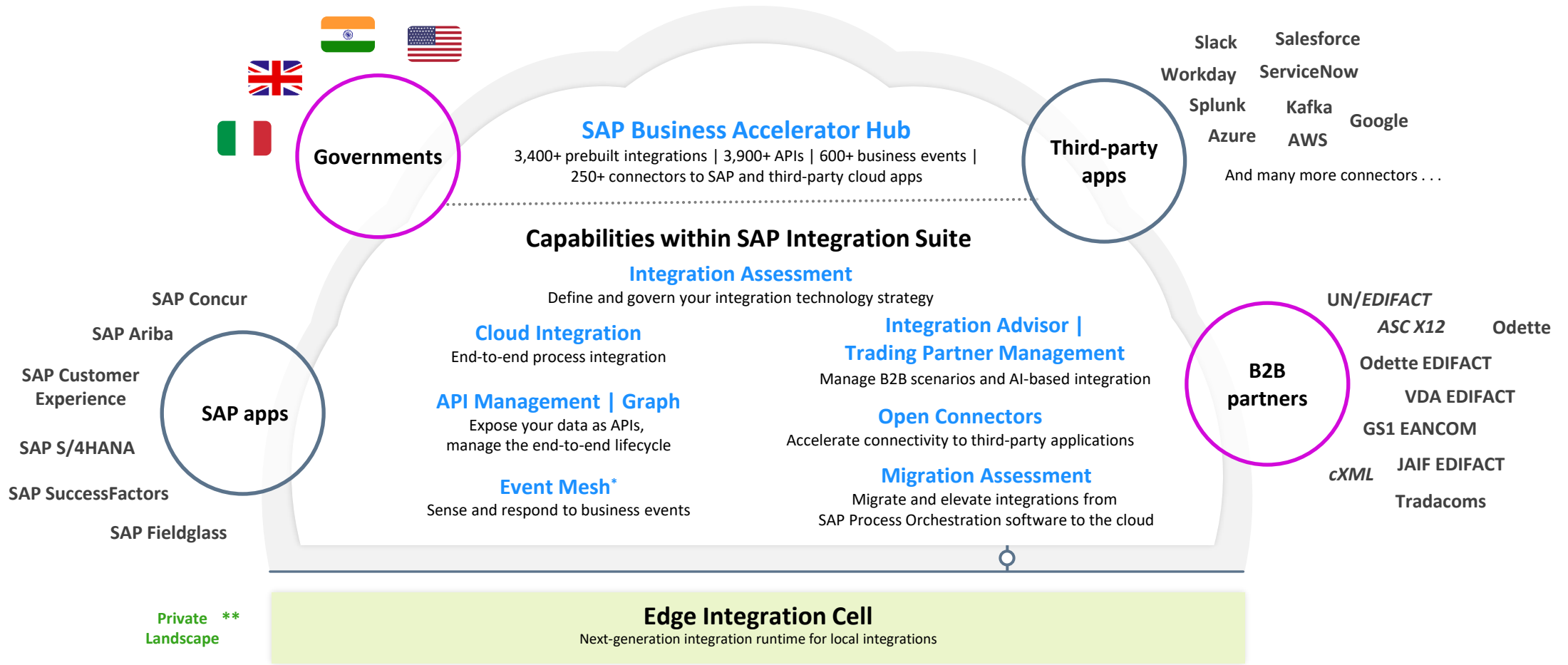
---

# SAP BTP, the foundation for an integrated SAP portfolio



# SAP Integration Suite

SAP's hybrid integration platform for the Intelligent Enterprise



# Choose a recognized Integration Platform as a Service (iPaaS)

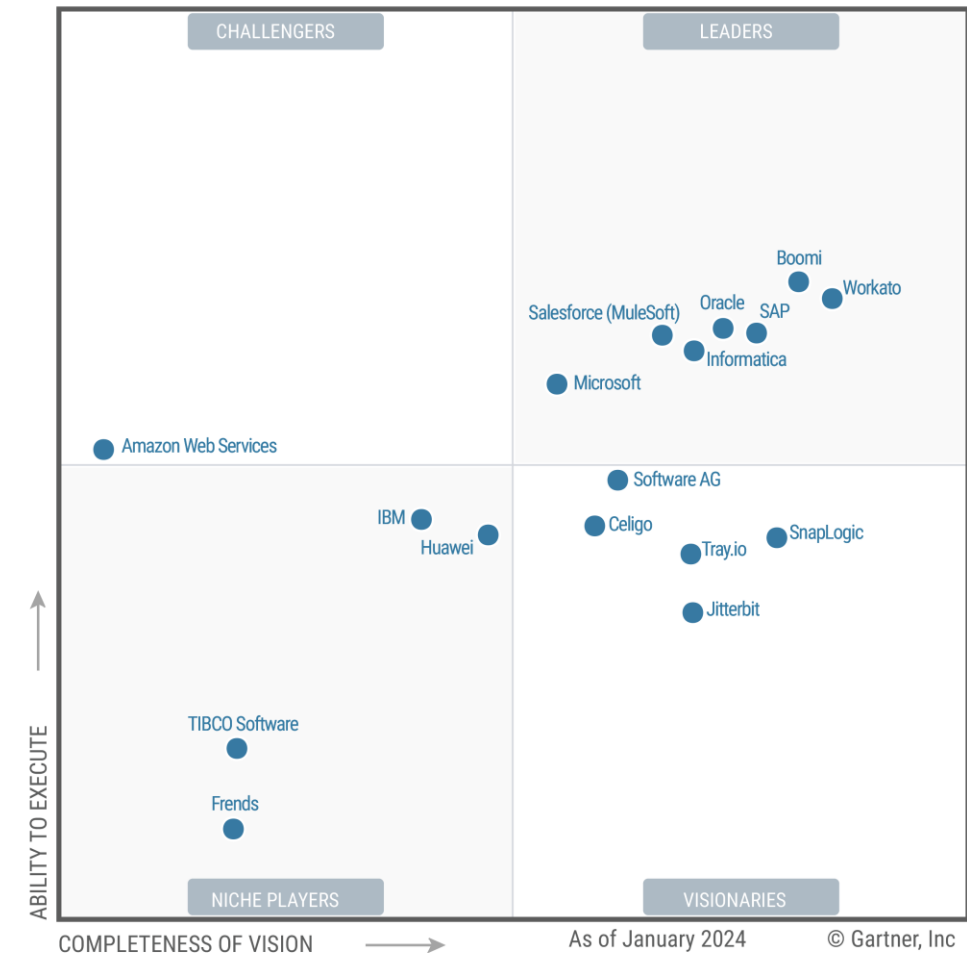
**SAP recognized as a Leader in the 2024 Gartner® Magic Quadrant™ for the 4<sup>th</sup> consecutive time.**

**Customers highly recommend SAP Integration Suite to their peers and score the product highly for customer satisfaction.**

This graphic was published by Gartner, Inc. as part of a larger research document and should be evaluated in the context of the entire document. The Gartner document is available upon request from [SAP here](#).

Gartner®, Magic Quadrant™ for Integration Platform as a Service, Keith Guttridge, Andrew Comes, Shrey Pasricha, Max van den Berk, Andrew Humphreys, 19 February 2024  
GARTNER is a registered trademark and service mark of Gartner and Magic Quadrant is a registered trademark of Gartner, Inc. and/or its affiliates in the U.S. and internationally and are used herein with permission. All rights reserved.  
Gartner® does not endorse any vendor, product or service depicted in its research publications and does not advise technology users to select only those vendors with the highest ratings or other designation. Gartner research publications consist of the opinions of Gartner's research organization and should not be construed as statements of fact. Gartner disclaims all warranties, expressed or implied, with respect to this research, including any warranties of merchantability or fitness for a particular purpose.

Figure 1. Magic Quadrant for Integration Platform as a Service



# Top 10 reasons to choose SAP's Integration Suite as your comprehensive enterprise-wide integration platform

1

**Versatile and enterprise-grade integration platform** covering all integration styles and patterns: A2A/B2B/B2G, APIs, events, digital integration hub, digital ecosystems

---

3

**Rich set of connectivity options** and standard adapters for A2A and B2B/B2G integration, 250+ **connectors** for SAP and non-SAP integrations

---

5

Simplify the process of **business partners collaboration** with the **power of artificial intelligence**

---

7

**Strong focus on enterprise-grade security** such as data isolation, multitenancy, content encryption and signing, single sign-on, and secure on-premise connectivity

---

9

Create **simple connected digital experiences** for your consumers, partners, and employees with full lifecycle management of your APIs

2

**Proven prebuilt integrations**, APIs, events, domain models to jump-start your integration projects

---

4

**Vendor-managed multi-cloud service in major hyperscalers** as well as customer-managed service providing flexibility to run integrations across multiple environments including private landscapes

---

6

Benefit from SAP's **continued innovation and long-term commitment** to simplify and accelerate enterprise integration

---

8

Share and learn from a **community and partner ecosystem**

---

10

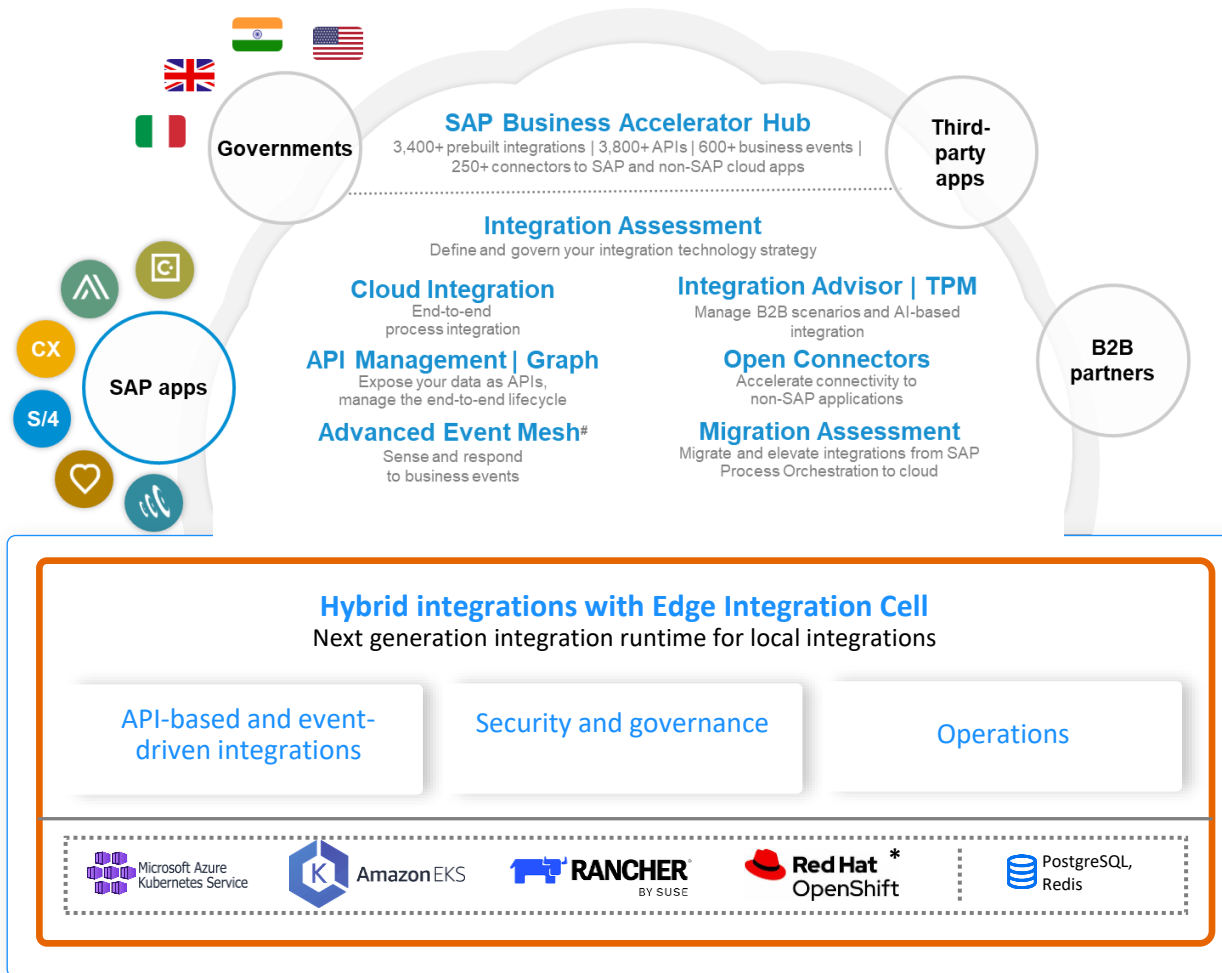
**SAP Integration Solution Advisory Methodology** with strong customer focus to make our customers run better

# Edge Integration Cell

---

# Edge Integration Cell

Next generation *hybrid* integration runtime



- **Flexible deployment** in customer environments on Kubernetes
- **Data compliance and governance** by processing data locally
- **Operations** (installation, software updates, etc.) managed by customer
- **Integration Studio** for design and monitoring **in the Cloud**
- Integration flows modeled in Cloud Integration are compatible
- Enables design and **management of APIs** with policies
- **Route business events** from SAP application to event brokers
- Configure and manage **multiple cells** with an SAP Integration Suite tenant
- Migration path for **SAP Process Orchestration customers**



[Blog](#)

\* Part of the roadmap, subject to change

# Private landscape corresponds to on-premise or private cloud

# Personas and tasks



## System admin

- Provision, maintain, and decommission Kubernetes resources and systems



## Tenant admin

- Activate Edge Integration Cell
- Manage roles
- Create and manage edge nodes
- Deploy Edge Integration Cell solution on K8s
- Monitor system
- Manage upgrades
- Operate Edge Integration Cell

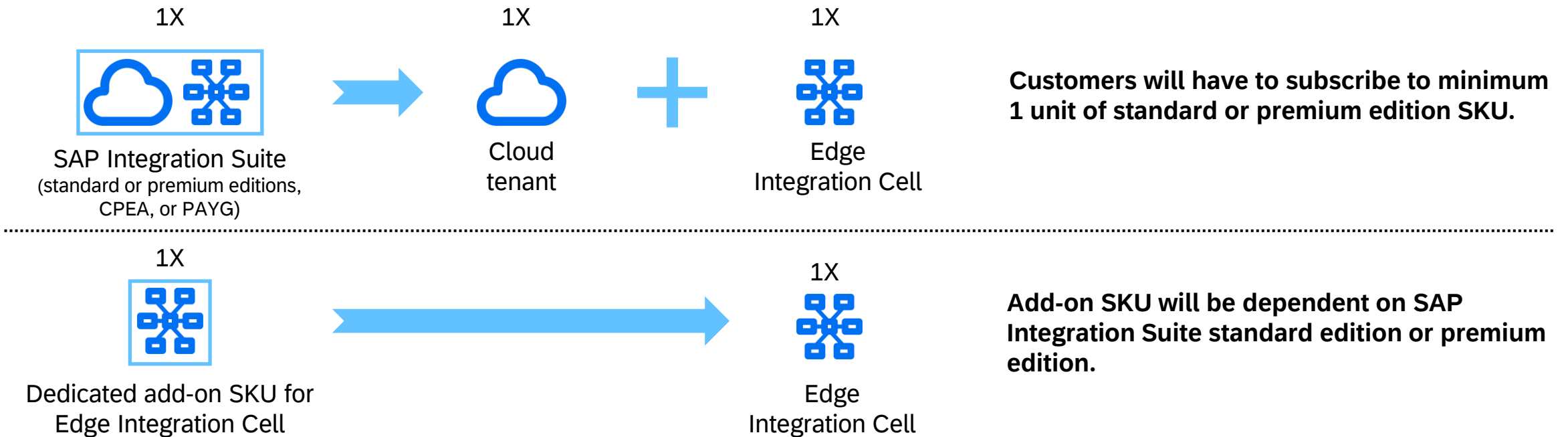


## Integration & API developer

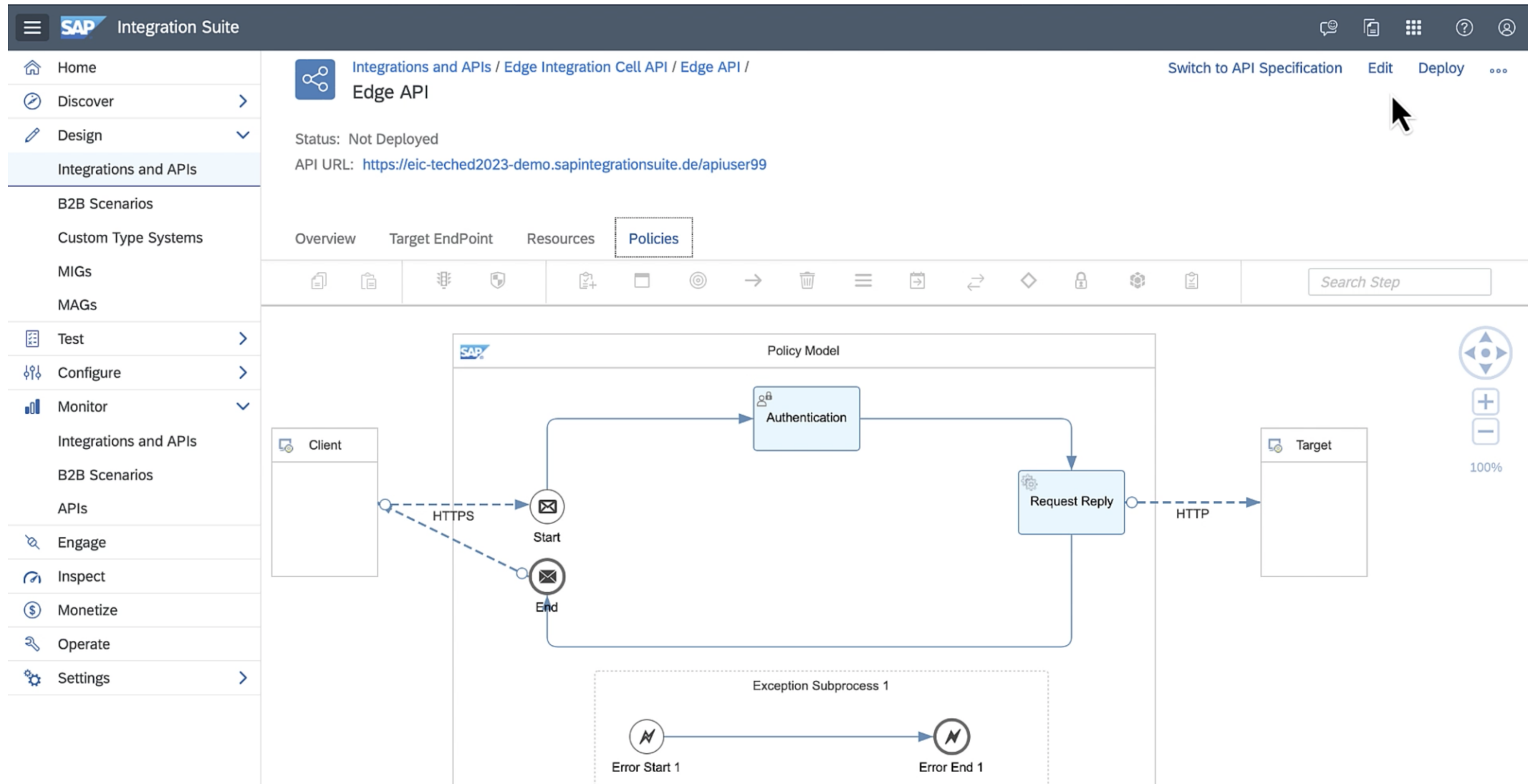
- Design APIs and integrations
- Deploy, monitor, and execute APIs and integration
- Test, debug, and troubleshoot integration scenarios

# Licensing model

- Edge Integration Cell is included as a part of the existing SAP Integration Suite (for standard and premium editions and CPEA and PAYG).
- Additional Edge Integration Cells can be acquired through a separate add-on SKU.
- Only 50% of the messages that are processed by Edge Integration Cell are chargeable (excluding unmodified standard content for SAP-to-SAP software).



# Design Integrations & APIs



# Deploy content across runtimes

Configure "Replicate Order from SAP Order Management Foundation to SAP S4HANA"

Sender Receiver More

**Connection**

Receiver: S4HANA

Adapter Type: SOAP

Address: https://proxyavrdev.hana.ondemand.com/Proxy/jenkslave55.cpi.c.eu-de-1.clo...

Proxy Type: Internet

Authentication: None

? Confirmation

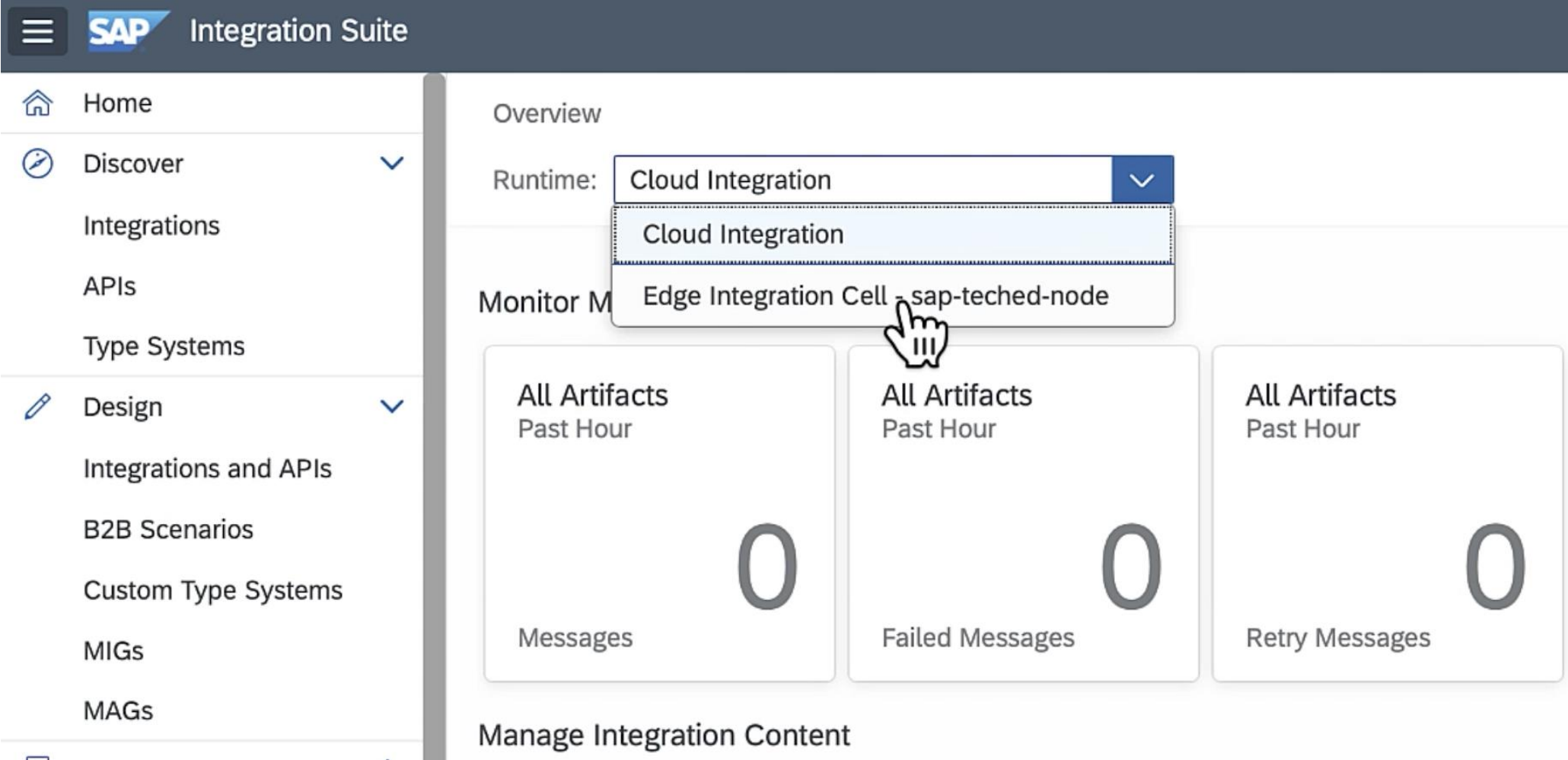
Do you want to deploy on the selected runtime profile?

Runtime Profile: Cloud Integration

Cloud Integration

Edge Integration Cell - sap-teched-node

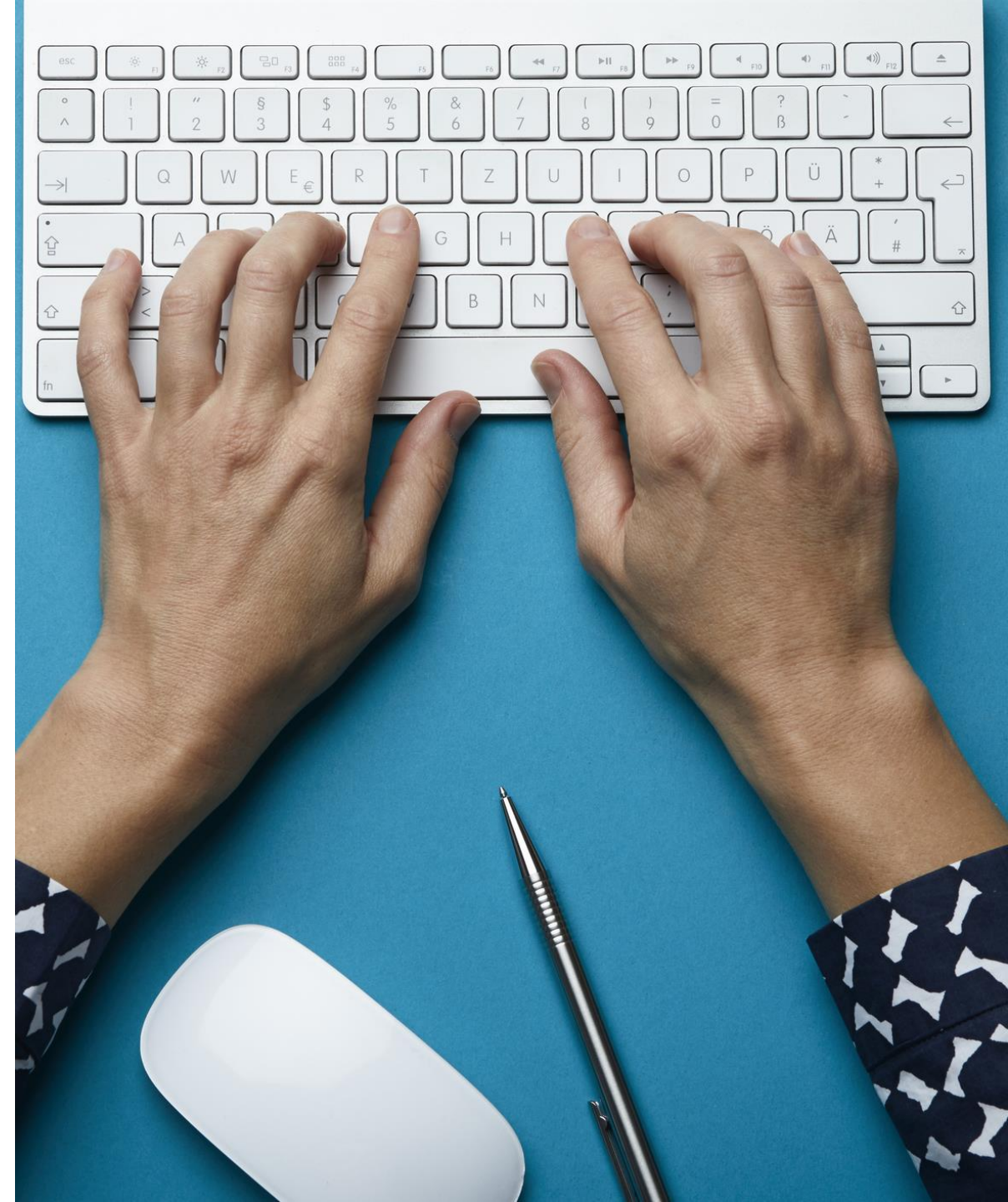
# Monitor Integrations & APIs



# Summary

## **SAP Integration Suite ...**

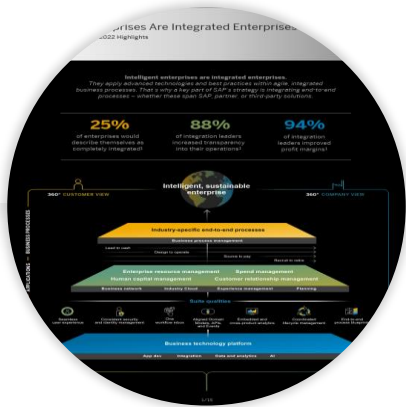
- Is a comprehensive and enterprise-grade integration platform covering all integration use cases, such as A2A, B2B, B2G, API-based, and event-driven integration
- Provides a rich set of prebuilt integration content for a tight integration with SAP and non-SAP applications
- Enables customers to manage APIs and run their integration scenarios within customer-managed private landscapes
- Drives the digital transformation of customers across industries globally





Q&A

# Jump start your integration journey with SAP



## Strategy paper

Intelligent enterprises are integrated enterprises.

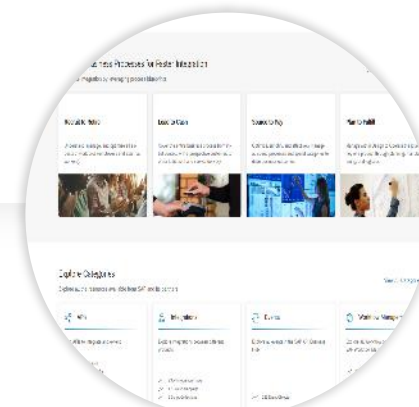
[Explore now >](#)



## CIO Guide

SAP's hybrid integration platform for the Intelligent Enterprise.

[Read now >](#)



## SAP Business Accelerator Hub

provides a single access point to prebuilt integrations, APIs, events, and more.

[Explore now >](#)



## SAP Community

connects thousands of users to share ideas, learn, and innovate.

[Visit the Community >](#)

[Blog](#) | [Documentation](#) | [Try it out with free BTP Trial](#) | [“Get started” mission at SAP Discovery Center](#)

# Thank you.

Contact

**Finny Babu**

Lead Product Manger, SAP Integration Suite

[finny.babu@sap.com](mailto:finny.babu@sap.com)

