

SAP HANA Summit 2021

Fabian Hägele, Bekim Hausdorf

PRESENTERS



Bekim Hausdorf

IT Application Analyst
Analytics & Planning



Fabian Hägele

IT Application Analyst
SAP Development



AGENDA

1



System
Landscape

2



Different HDI
Container &
Development
process

3



CI / CD

4

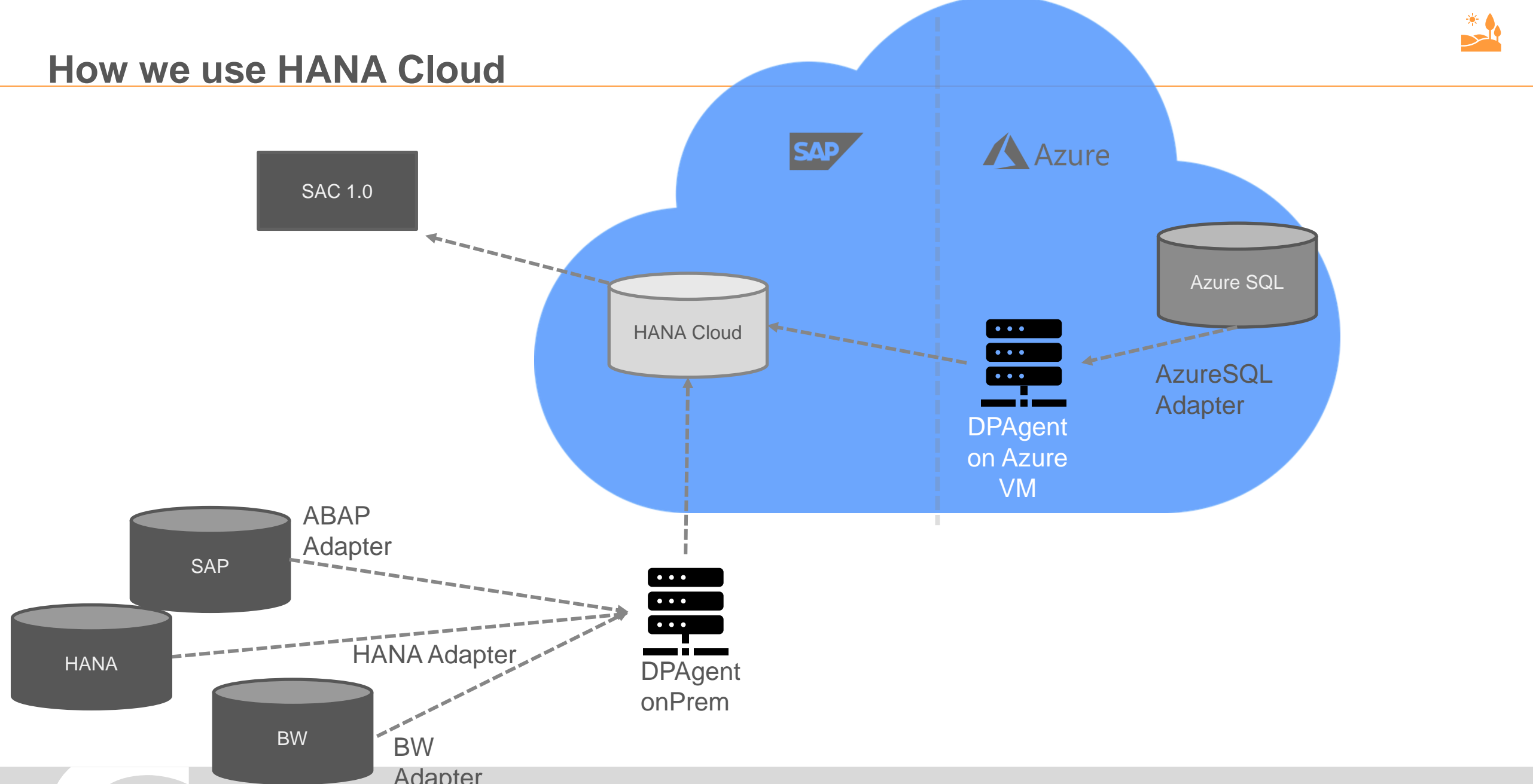


Authorization
concept





How we use HANA Cloud



SAC 1.0

HANA Cloud

SAP Azure

Azure SQL

DPAgent on Azure VM

AzureSQL Adapter

ABAP Adapter
SAP

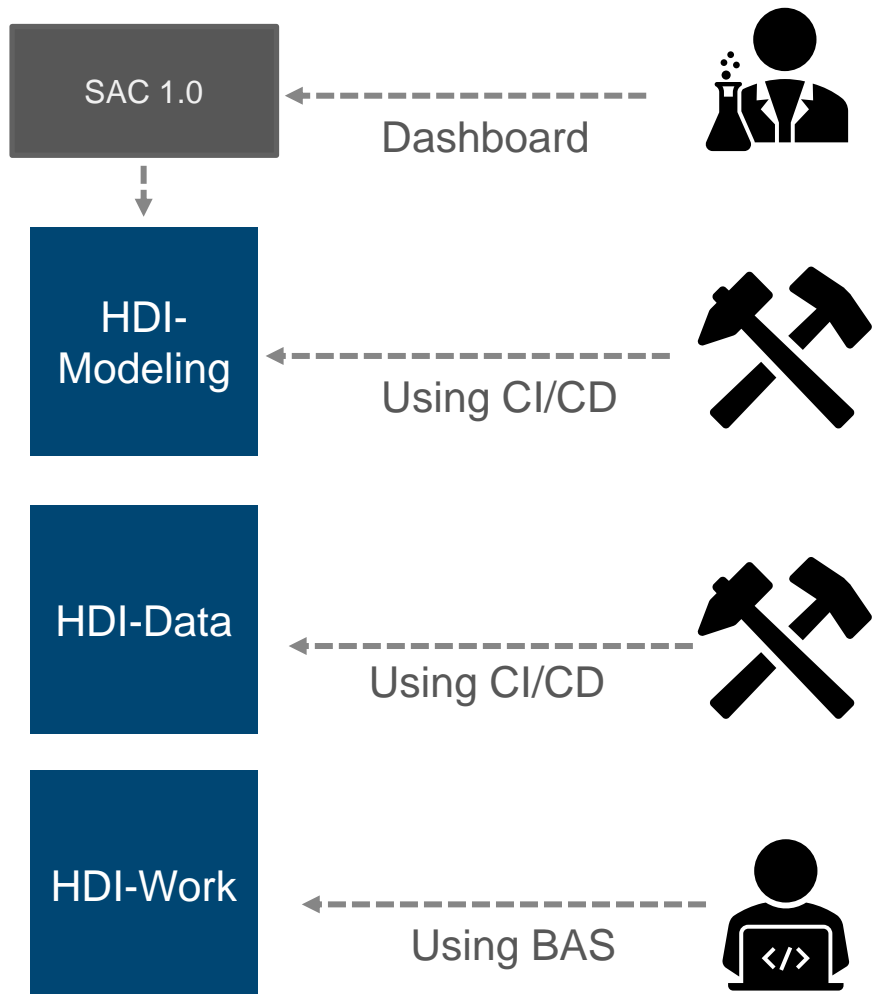
HANA Adapter
HANA

BW Adapter
BW

DPAgent onPrem



HDI Container @ Geberit



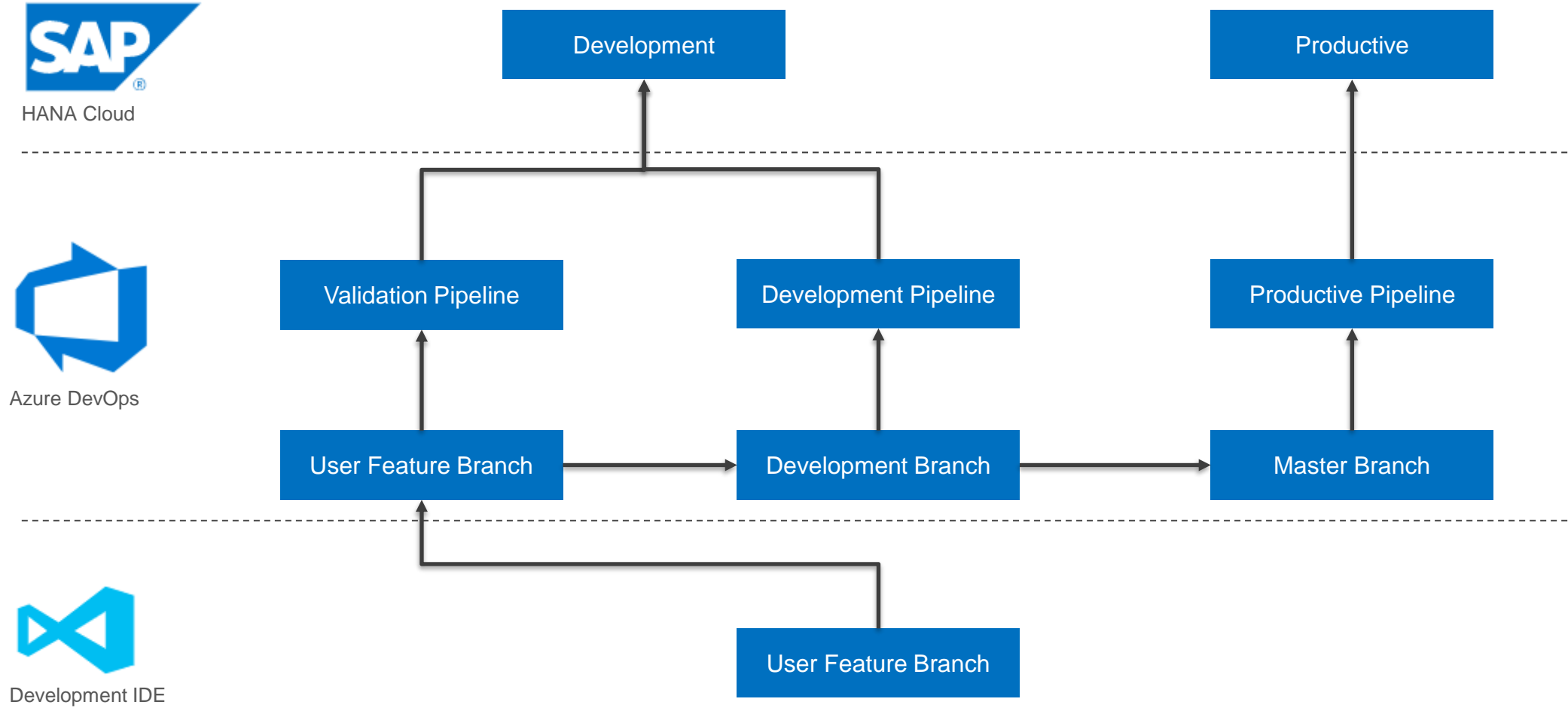
HDI Container contains Calcviews and other consumable objects. Object may have line-based restrictions

HDI Container Contains all objects which contain data like tables and virtual tables. User don't have access to this container

Every Developer has for every container a workspace-container. They can deploy the artifacts using the deploy function in BAS



Development Process



Azure DevOps



HANA Cloud





Jobs in run #0.8.0-alpha.297	
Template	3m 21s
Initialize job	3s
Checkout geb_azure_devops_c...	5s
Checkout yhdi_basis@develop ...	6s
CmdLine	<1s
npm install	10s
NodeTool	<1s
Install GitVersion	6s
Determine Git Version	2s
Build MTA	25s
Install Cloud Foundry CLI 6.43.0	2s
cf install-plugin	5s
cf deploy PROD	<1s
cf deploy DEV (Develop a...	2m 10s
cf deploy EXPERIMENT	<1s
cf download-mta-op-logs PR...	<1s
cf download-mta-op-logs DEV	<1s
cf download-mta-op-logs EX...	<1s
GET LOGS	<1s
After Deploy Script	<1s
Set TAG GIT Commit	<1s
Post-job: Checkout yhdi_basis...	<1s

Build MTA

- Replace
- *.*config files for Prod or Dev
- Replace
- Placeholders in mtaext file
- Script: refresh already existing VTs

Deploy DEV || PROD

- cf deploy

Get Logs

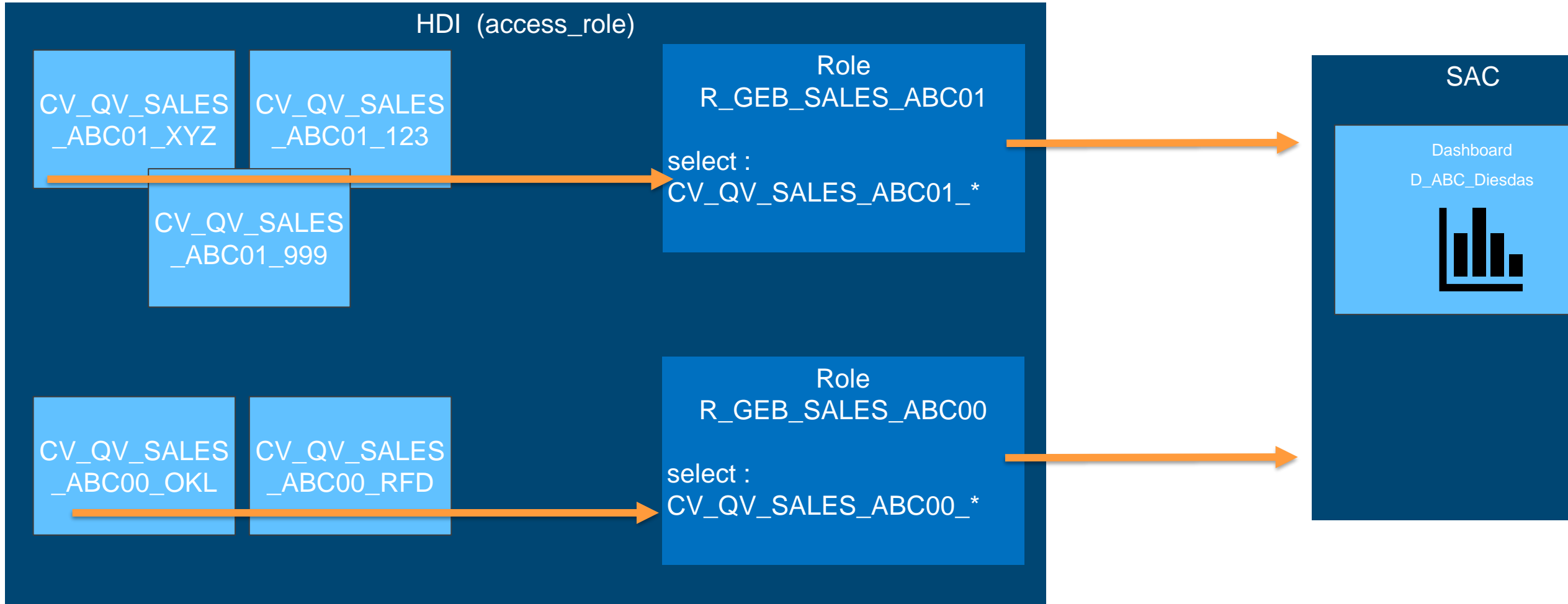
- cf dmlol – in case of failed deployment





Authorization concept

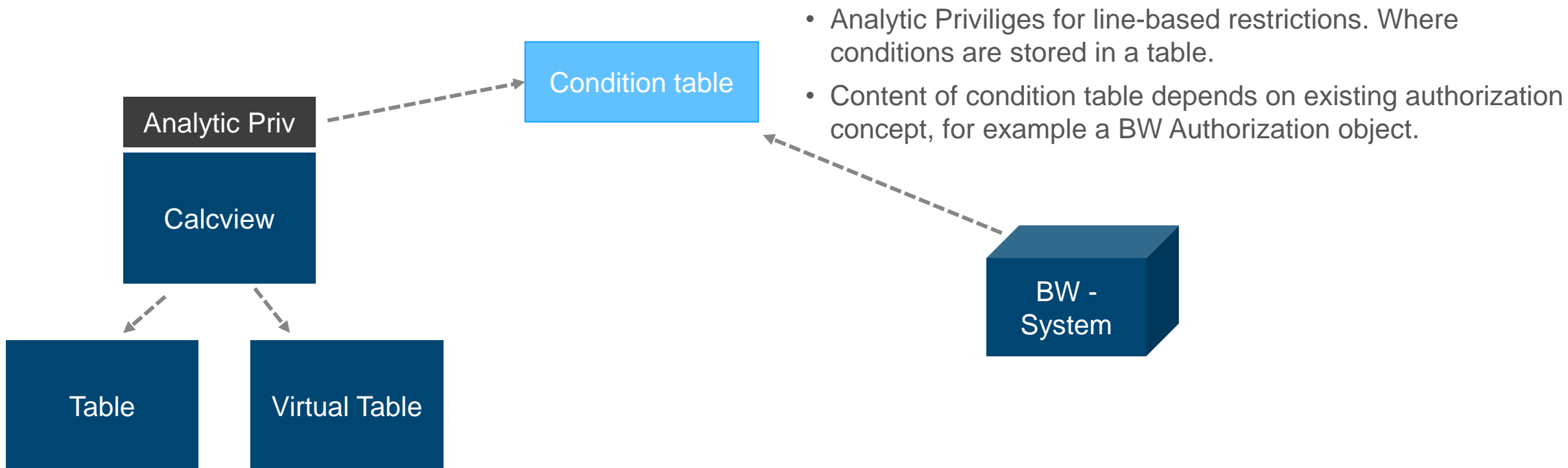
Access to Calcviews





Authorization concept

Restriction to data



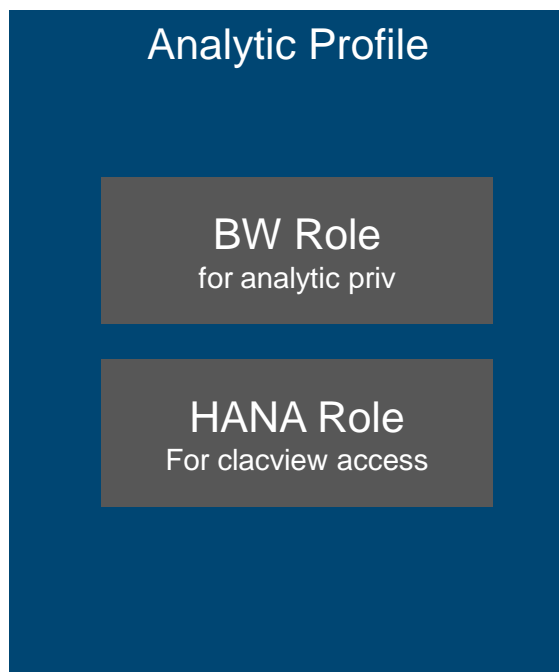
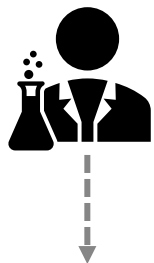
- Analytic Privileges for line-based restrictions. Where conditions are stored in a table.
- Content of condition table depends on existing authorization concept, for example a BW Authorization object.





Authorization concept

Restriction to data



In case the calcview uses analytic privileges which are based on the existing BW authorization concept, the user needs the BW Role AND the HANA Role to access the Calcview.

Solution: Group multiple needed authorization objects from multiple systems together into one object called Analytic Profile



Analytic Profile is requestable trough IDM-System → Self-Service-Idea



Any Questions welcome!



CONTACT INFORMATION



Bekim Hausdorf

IT Application Analyst

Bekim.Hausdorf@geberit.com



Fabian Hägele

IT Application Analyst

Fabian.Haegele@geberit.com

