



SAP Leonardo Live

Not just another business conference

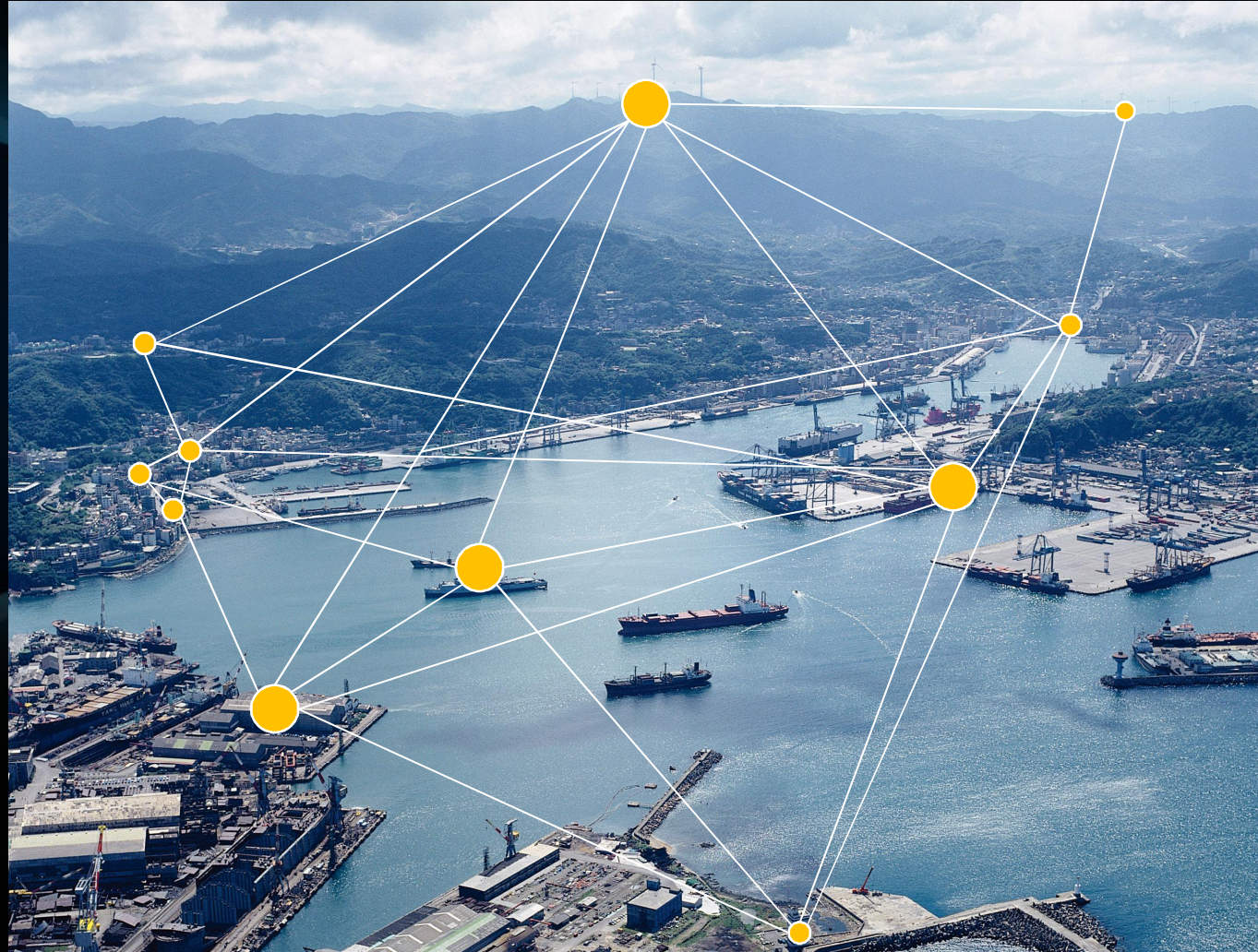
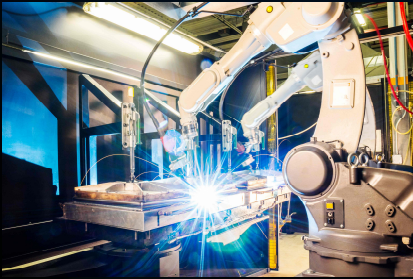
**Realize immediate Business value
with SAP Leonardo IoT and a digitized supply chain**

Dr. Tanja Rueckert
President IoT & Digital Supply Chain, SAP SE

PUBLIC

SAP Leonardo IoT and Digital Supply Chain

An End-to-End Solution to realize Business Value



SAP Dynamic Edge Processing



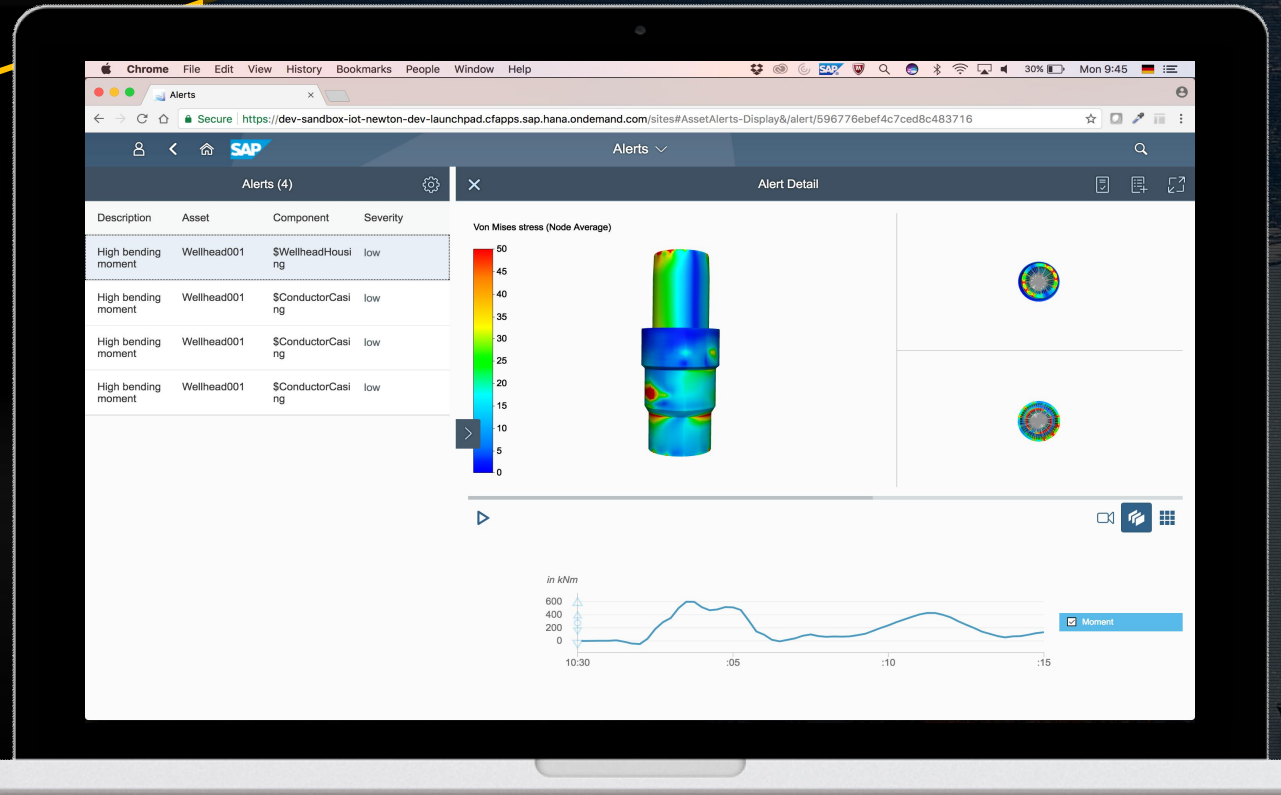
- Low-latency near real-time responses
- Optimization for low bandwidth connections, when in the field
- Bi-directional synchronization



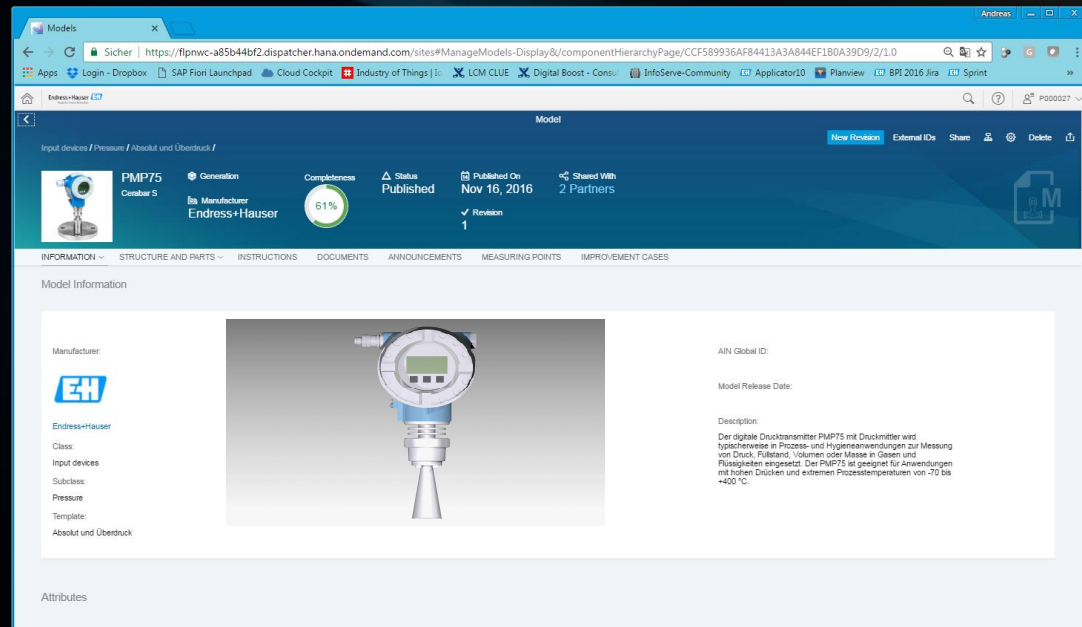
SAP Digital Twin



- Sensor-based real-time structural analysis of industrial assets
- Digital Inspections of industrial assets



SAP Asset Intelligence Network



The screenshot displays the SAP Asset Intelligence Network interface for the PMP75 model. The top navigation bar includes links for 'Models', 'New Releases', 'External IDs', 'Share', and 'Delete'. The main content area shows the model details for PMP75, including its status (Published), completion (61%), and publication date (Nov 16, 2016). A sidebar on the left lists various categories like 'Input devices', 'Pressure', and 'Absolute and Overdruck'. The main content area features a large image of the PMP75 device and a detailed description in German.

Model Information

Manufacturer: Endress+Hauser

Class: Input devices

Subclass: Pressure

Template: Absolute und Überdruck

AIN Global ID:

Model Release Date:

Description: Der digitale Drucktransmitter PMP75 mit Druckmittler wird typischerweise in Prozess- und Hygieneanwendungen zur Messung von Druck, Füllstand, Volumen oder Masse in Gasen und Flüssigkeiten eingesetzt. Der PMP75 ist geeignet für Anwendungen mit hohen Drücken und extremen Prozesstemperaturen von -70 bis +400 °C.



BASF
We create chemistry

EH
Endress+Hauser
People for Process Automation

Smart Asset Insights

SAP Digital Twin

SAP Vehicle Insights

SAP Predictive Maintenance and Services

SAP Asset Intelligence Network



8%-10%

Reduction in maintenance costs



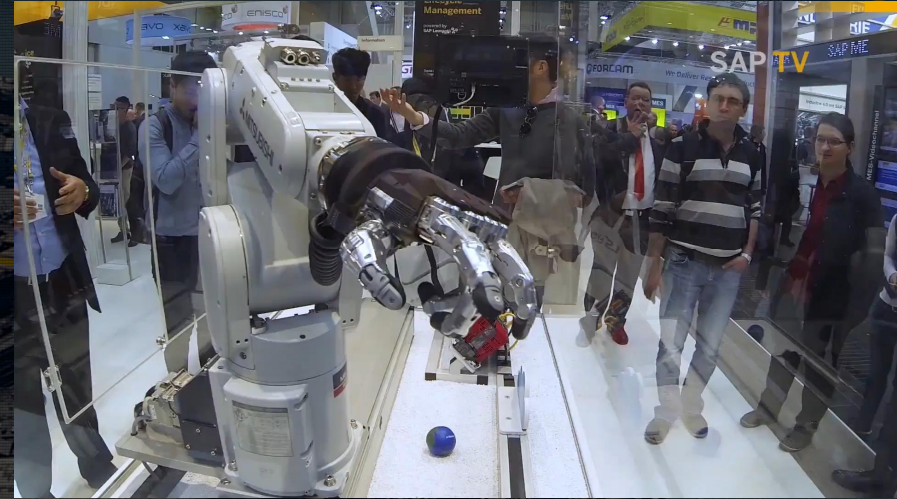
New Business Models

Including Full-Service Agreements or Equipment-as-a-service



Service Excellence

End-to-End Field service planning and execution





Sabrina Bartlett

SAP Digital Manufacturing Lead, Capgemini

Our Partnership in Action

Capgemini



Fast Digital 4 Discrete Industries
Driving Innovative IoT Scenarios with
SAP Leonardo

Connecting the Shop Floor with the Digital Supply Chain

SAP Extended Warehouse Management

SAP Global Track and Trace



93%

Increase of domestic
on-time delivery

10%

Increase of asset
value on reselling





Hans Thalbauer

SVP, IoT & Digital Supply Chain, SAP

Digital Supply Chain

Business models,
Business processes,
Work Environment

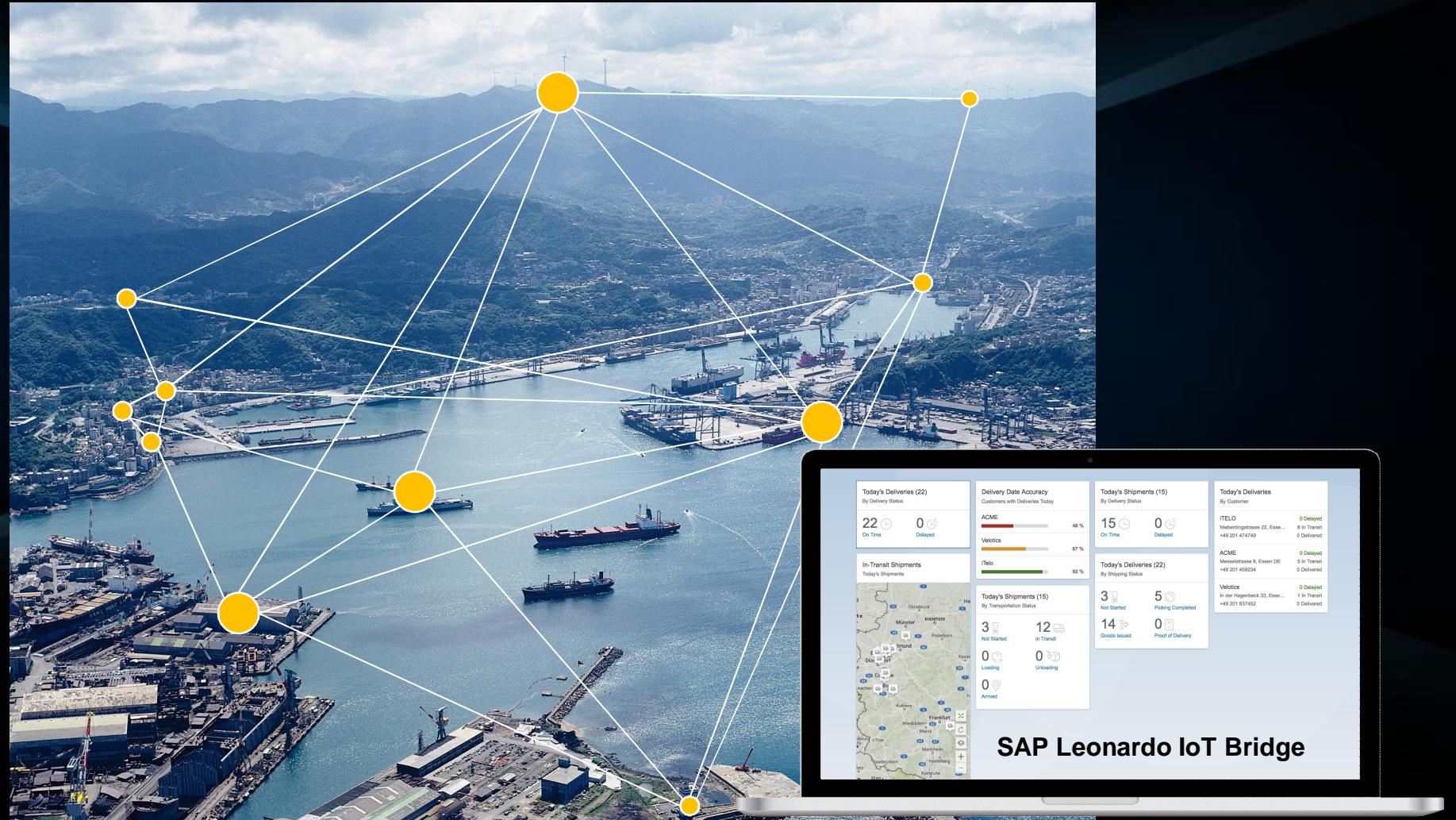


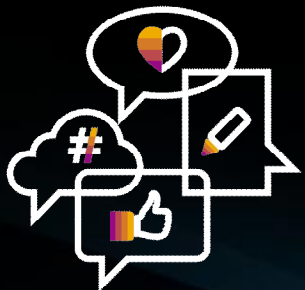
powered by
SAP Leonardo IoT

Customer Centricity,
Act in the Moment
Intelligently

SAP Leonardo IoT and Digital Supply Chain

An End-to-End Solution to realize Business Value





Speed Matters – Here's How to Accelerate



World-Class
customer base



Powerful
Ecosystem



Business Process & Industry
expertise with focus on...



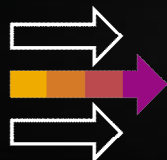
... open/common
standards



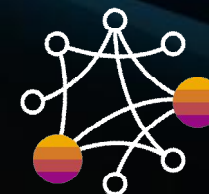
... and **security**.



Agnostic



Ready-to-Deploy integrated
Industry E2E solutions



Networks