

Call to Action: Compatibility Packs in SAP S/4HANA – **Important!**

31. Juli 2024

Dr. Stefan Berndt, Michael Deller, SAP



Disclaimer

The information in this presentation is confidential and proprietary to SAP and may not be disclosed without the permission of SAP. Except for your obligation to protect confidential information, this presentation is not subject to your license agreement or any other service or subscription agreement with SAP. SAP has no obligation to pursue any course of business outlined in this presentation or any related document, or to develop or release any functionality mentioned therein.

This presentation, or any related document and SAP's strategy and possible future developments, products and or platforms directions and functionality are all subject to change and may be changed by SAP at any time for any reason without notice. The information in this presentation is not a commitment, promise or legal obligation to deliver any material, code or functionality. This presentation is provided without a warranty of any kind, either express or implied, including but not limited to, the implied warranties of merchantability, fitness for a particular purpose, or non-infringement. This presentation is for informational purposes and may not be incorporated into a contract. SAP assumes no responsibility for errors or omissions in this presentation, except if such damages were caused by SAP's intentional or gross negligence.

All forward-looking statements are subject to various risks and uncertainties that could cause actual results to differ materially from expectations. Readers are cautioned not to place undue reliance on these forward-looking statements, which speak only as of their dates, and they should not be relied upon in making purchasing decisions.

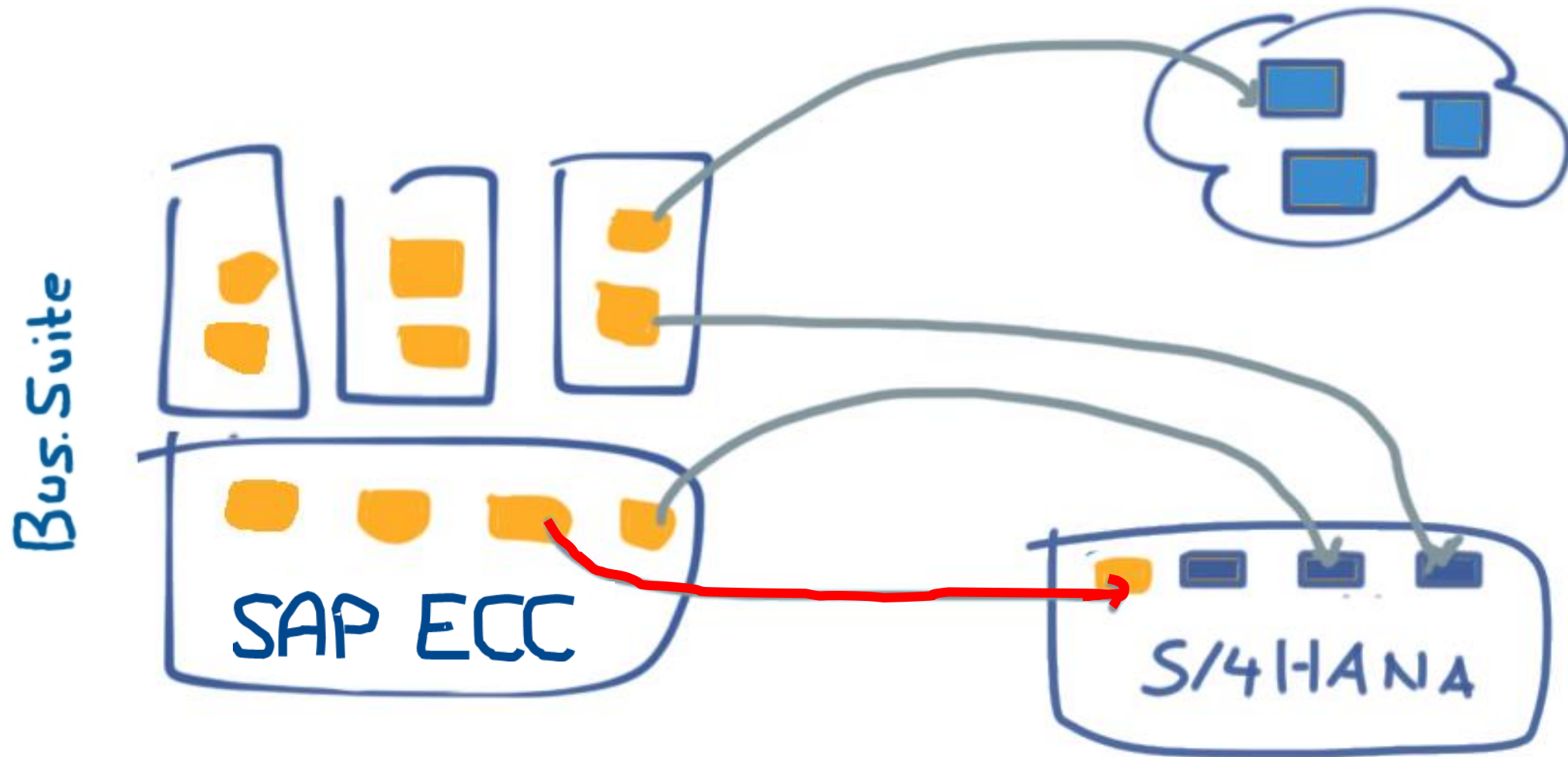


Misten Sie mal Ihren
“SAP S/4HANA Schrank” aus...
raus mit den alten
**Compatibility
Packs**

31. Juli 2024



Transitionspfade von der Business Suite nach SAP S/4HANA



Compatibility Packs - eine Brücke in die S/4HANA-Welt

Einführung

Was sind CPs?

Temporäre **Nutzungsrechte** an klassischen (Business Suite) Funktionalitäten innerhalb von S/4HANA, definiert im Jahr 2016. Seitdem Teil jedes SAP S/4HANA-Vertrags – on-premise und private cloud.

Warum hat SAP diese eingeführt?

Ziele: (a) Leichter Übergang nach SAP S/4HANA für Bestandskunden
(b) Zeitgewinn zur Definition der neuen, simplifizierten Anwendungsarchitektur

Ist das dasselbe wie “end of support”?

Nein! Das Ende eines Nutzungsrechts ist ein harter vertraglicher Stopp. Und: SAP stellt natürlich den Support für Dinge ein, für die kein Nutzungsrecht besteht.

Gibt's das nur in “on-premise”?

Nein! Diese eingeschränkten Nutzungsrechte bestehen in der **S/4HANA Private Cloud (RISE) und on-premise**. Sie existieren nicht in ECC und S/4 Public Cloud.

Wie hat SAP die CPs kommuniziert?

(a) Teil der Software Use Rights, Service Description Guides und der Feature Scope Description seit Q1 2016.
(b) Teil jeder S/4 commercials-Präsentation seit 2016 – gegenüber Usergroups, Kunden, SAP-intern... auf allen Kanälen.
(c) Teil der Feature Scope Description (legally binding scope description) seit 2016
(d) zentraler CP Hinweis 2269324 ist live seit Januar 2016

.....

Compatibility Packs - eine Brücke in die S/4HANA-Welt

Die Kunden-Perspektive

Was passiert am bzw. nach dem 1. Januar 2026?

(a) Kunden, die nach dem Stichtag CPs produktiv nutzen, sind vertragsbrüchig = kommerziell nicht compliant. Sie haben **nicht lizenzierte und nicht gewartete Software** im Einsatz – bei IT Audits unter Umständen ein Riesenproblem.

(b) Mit dem Ende der Nutzungsrechte endet auch der Support.

(c) SAP beginnt mit Release 2025, CP Funktionalitäten technisch unbenutzbar zu machen.

Wie finde ich heraus, ob / wie es mich betrifft?

Der **SAP Readiness Check** analysiert die Nutzung von CPs auf ECC- und S/4HANA-Systemen.

The **Early Watch Alert** (EWA) Report listed ebenfalls die Nutzung von CPs.

Welche funktionalen Alternativen habe ich?

Mit dem Release 2023 hat SAP **Go-to Lösungen** ausgeliefert, die Funktionalitäten von CPs, die 2025 auslaufen, ersetzen. Viele davon sind non-disruptiv. Das “WayForward Excel” in Hinweis 2269324 listet diese Go-to solutions pro CP Item.

Unser [zweites Webinar](#) gibt detaillierte Informationen dazu.

Compatibility Packs - eine Brücke in die S/4HANA-Welt

Die Matrix



Part 4: Details to ERP_Package						
Comp. Pack ID	COMPONENT	SUBCOMPONENT	TYPE	DETAILS	Application Component Hierarchy	Relevant Note / Link
453	Material Identification / Reconciliation ⁽⁴⁾	Material Identification / Reconciliation - Basic Production Execution	U	Functionality of Material Identification/Reconciliation is not strategic within SAP S/4HANA.	PP-PI-MIR	http://launchpad.support.sap.com/#/notes/2270236
454	Process Instruction Sheets ⁽⁴⁾	Process Instruction Sheets - Basic Production Execution	U	Process Instruction Sheets (PI-sheets) and related technologies (electronic work instructions/EWI, Xsteps) are not strategic within SAP S/4HANA.	PP-MES	http://launchpad.support.sap.com/#/notes/2268070
455	Process Messages ⁽⁴⁾	Process Messages - Basic Production Execution	U	The Process Messages functionality has been adapted within SAP S/4HANA: - replacement of monitoring transactions against modern UI (SAP Fiori/SAP UIS) - improvement on used communication technology (currently t-RFC)	PP-PI-PMA-MSG	http://launchpad.support.sap.com/#/notes/2270231
456	Process Operator Cockpits ⁽⁴⁾	Process Operator Cockpits - Basic Production Execution	U	Functionality of process operator cockpits (POC) based on SAPWinGUI is not strategic within SAP S/4HANA.	PP-PI-PMA-OPC	http://launchpad.support.sap.com/#/notes/2270235
457	Production Campaign ⁽⁴⁾	Production Campaign - Basic Production Execution	U	Production Campaign functionality is not strategic within SAP S/4HANA.	PP-PI-PCM	http://launchpad.support.sap.com/#/notes/2270216
458	Sales and Operations Planning	Sales and Operations Planning	U	Sales and Operations Planning is replaced by SAP Integrated Business Planning.	PP-MES	http://launchpad.support.sap.com/#/notes/2268064
459	Project Reporting	PS-Project Reporting	U	Modernization of Project Structure Reports by support of key-user extensibility (SAP S/4HANA 2021). For Hierarchy and Line Item Reports modernization has been delivered with SAP S/4HANA 2022 FPS01. All modernized functionalities are part of perpetual scope.	PS-IS	http://launchpad.support.sap.com/#/notes/2267286
460	Selected Project System Logistics Capabilities	Selected Project System Logistics Capabilities	U	Modernization of project-oriented procurement by support for multiple business partner addresses as part of purchasing integration (SAP S/4HANA 2021). Non-valuated project stock modernized by enhancements in the context of Project Manufacturing Management and Optimization (SAP S/4HANA 2020). Open Catalog interface modernization is delivered with SAP S/4HANA 2022 FPS01.	PS-MAT-PRO	http://launchpad.support.sap.com/#/notes/2267384
461	Date Planning Transactions	PS-Date Planning Transactions	U	Modernization of planning transaction delivered with SAP S/4HANA 2022 FPS02.	PS-DAT	http://launchpad.support.sap.com/#/notes/2267188
462	Selected project financial planning and control functions	PS-Selected project financial planning and control functions, incl. ECP	U	Modernization of Easy Cost Planning and network planning for projects by support of ACDOCP, the main table for financial planning in SAP S/4HANA (SAP S/4HANA 2022). Further financial planning and control functions have been modernized with SAP S/4HANA 2022 FPS01 and SAP S/4HANA 2023. Refer to SAP note 2267333 and 3265838 for functionalities remaining in compatibility scope.	PS-COS	http://launchpad.support.sap.com/#/notes/2267182
463	Production Resources and Tools functions for projects	PS-Production Resources and Tools functions for projects	U	Production Resources and Tools (PRT) for projects are considered as not strategic anymore in SAP S/4HANA	PS	http://launchpad.support.sap.com/#/notes/2270262
464	Progress Tracking & Monitoring Dates	PS-Progress Tracking & Monitoring Dates	U	For Progress Tracking a modernized software version with a perpetual use right is available as of S/4HANA release 2022. Monitoring Network Dates (NWTM) remains in compatibility scope, no alternative planned.	PS-PRG-TRC	http://launchpad.support.sap.com/#/notes/2267190
465	Project Planning Board, Gantt-Chart, Hierarchy and Network Graphic	Project Planning Board, Gantt-Chart, Hierarchy and Network Graphic	U	Modernization of Project Planning Board (Gantt-Chart) (SAP S/4HANA 2021) and Network Graphic (SAP S/4HANA 2020 FPS1) by additional, alternative visualization via a Fiori-based app. Hierarchy Graphic remains in compatibility scope, no alternative planned.	PS	http://launchpad.support.sap.com/#/notes/2270263
466	Project texts (PS texts)	PS-Project texts (PS texts)	U	Renewed project texts are available as an alternative solution (SAP S/4HANA 2021 FPS1).	PS	http://launchpad.support.sap.com/#/notes/2270266
467	Claim Management	PS-Claim Management	U	Modernization of Project Claim Management by Read API and Fiori App Project Claim (SAP S/4HANA 2022). All modernized functionalities are part of perpetual scope.	PS-CLM	http://launchpad.support.sap.com/#/notes/2267169
468	Selected Business Function Capabilities	PS-Selected Business Function Capabilities	U	Several business function capabilities have been modernized with releases up to SAP S/4HANA 2023 and, hence, are available in perpetual scope.	PS	http://launchpad.support.sap.com/#/notes/2267333

Compatibility Packs - eine Brücke in die S/4HANA-Welt

Das WayForward Excel



Item ID	Part	Item Title	Status	Status Comments	Alternative	Alternative - Info	Alternative - FSD Entry	Alternative - (prime) Product Version	Simplification Item	Business Impact Note	CompPack - FSD Entry	Alternative - Roadmap Info	Delta Info
426	4 - ERP-Package	FI-DataSources in Finance	Alternative Exists	Availability of data sources (aka BW extractors) is described in SAP note #2500202. Only data	BW Extractors released for SAP S/4HANA, Group Reporting, Cash Management			SAP S/4HANA 1909	S4TWL - BW Extractors in SAP S/4HANA	2500202	DataSources: Usage in Finance		SAP Note #2270
427	4 - ERP-Package	EC-PCA - Classical profit center accounting	Alternative Exists		"Profit Center Accounting on Universal Journal" in SAP S/4HANA			SAP S/4HANA 1909	S4TWL - PROFIT AND LOSS PLANNING AND PROFIT CENTER PLANNING	2270407	Profit Center Accounting (EC-PCA)		
428	4 - ERP-Package	FI-AA / Group Assets	Clarification					SAP S/4HANA 1909	S4TWL - ASSET ACCOUNTING	2270388	From FI-AA: Group Assets		
429	4 - ERP-Package	FI-AA / Derived depreciation areas in asset	Alternative Exists With Roadmap	alternative exists in SAP S/4HANA Cloud, on roadmap for SAP S/4HANA [on-premise]	"Asset Accounting" in SAP S/4HANA		Asset Accounting	SAP S/4HANA 1909	S4TWL - ASSET ACCOUNTING	2270388	From FI-AA: Derived Depreciation Areas		
430	4 - ERP-Package	Special purpose ledger; cost of sales ledger	Alternative Exists	Usage of SAP standard ledgers will expire as outlined in the relevant compatibility scope	Financial Reporting based on the universal journal (ACDOCA); special ledger use cases	Universal Journal		SAP S/4HANA 1909			Special Ledgers (FI-SL)	#REF!	
431	4 - ERP-Package	Schedule Manager	Alternative Exists With Roadmap		SAP S/4HANA Cloud for Advanced Financial Closing			SAP S/4HANA 1909					
432	4 - ERP-Package	Reconciliation Ledger - General Ledger	Alternative Exists		Analytical Fiori Apps / embedded analytics for Cost Element Reporting based on			SAP S/4HANA 1909	S4TWL - Reporting/Analytics in Controlling	2349297	Reconciliation Ledger		
433	4 - ERP-Package	Reporting/Analytics in Finance and Controlling	Alternative Exists With Roadmap	Report Painter and Report Writer framework will still be available after expiry of compatibility	Financial Reporting based on the universal journal (ACDOCA) using virtual data model	SAP Note #2579584 - Recommendations for		SAP S/4HANA 1909	S4TWL - Reporting/Analytics in Controlling		Report Painter and Report Writer Usage in Finance and Controlling	General ledger and reporting	
434	4 - ERP-Package	Consolidation preparation - Closing Operations	Alternative Exists With Roadmap	Consolidation (EC-CS) and preparations for consolidation will expire. See notes regarding	SAP S/4HANA Finance for Group Reporting	Group Reporting	Group Reporting	SAP S/4HANA 1909			Preparations for Consolidation		SAP Note #2841 S/4HANA Finance
436	4 - ERP-Package	Electronic Invoicing Connector	Alternative Exists With Roadmap	Communication regarding alternative to come via SAP Roadmaps	SAP Document Compliance (not yet 100% coverage for all countries)								
437	4 - ERP-Package	FSCM Biller Direct (Integration: BRIM/FI-CA, FI-AR, FI-AP)	Alternative Exists	For FI-AR the solution SAP S/4HANA Cloud for customer payments should be used	SAP S/4HANA Cloud for customer payments								
439	4 - ERP-Package	Engineering Workbench - Product Development Foundation	Alternative Exists		SAP S/4HANA (on-premise)								
440	4 - ERP-Package	Integration to SAP Portfolio and Project Management - Product Development	Alternative Exists		SAP S/4HANA Banking for payment centralization								
441	4 - ERP-Package	PLM Web UI Engineering Record - Product Development Foundation	Alternative Exists										
442	4 - ERP-Package	LIS in Enterprise Asset Management - Maintenance Planning and Scheduling	Alternative Exists										
443	4 - ERP-Package	Classical MRP BADs and MRP lists	Alternative Exists With Roadmap										
444	4 - ERP-Package	Control Recipes & Process Instructions	Alternative Exists		SAP S/4HANA for product compliance								
445	4 - ERP-Package	Digital Signature - Basic Production Execution	Alternative Exists		SAP S/4HANA Finance for Advanced Payment Management								
446	4 - ERP-Package	Electronic Batch Record (EBR) - Basic Production Execution	Alternative Exists										

SAP S/4HANA Cloud, private edition

Alternative

Status

Alternative Exists

SAP S/4HANA Cloud for payment centralization, private edition (Material code 8008887)

SAP S/4HANA Cloud for product compliance, private edition (Material code 8008754)

SAP S/4HANA Cloud for advanced payment management, private edition (Material code 8008722)

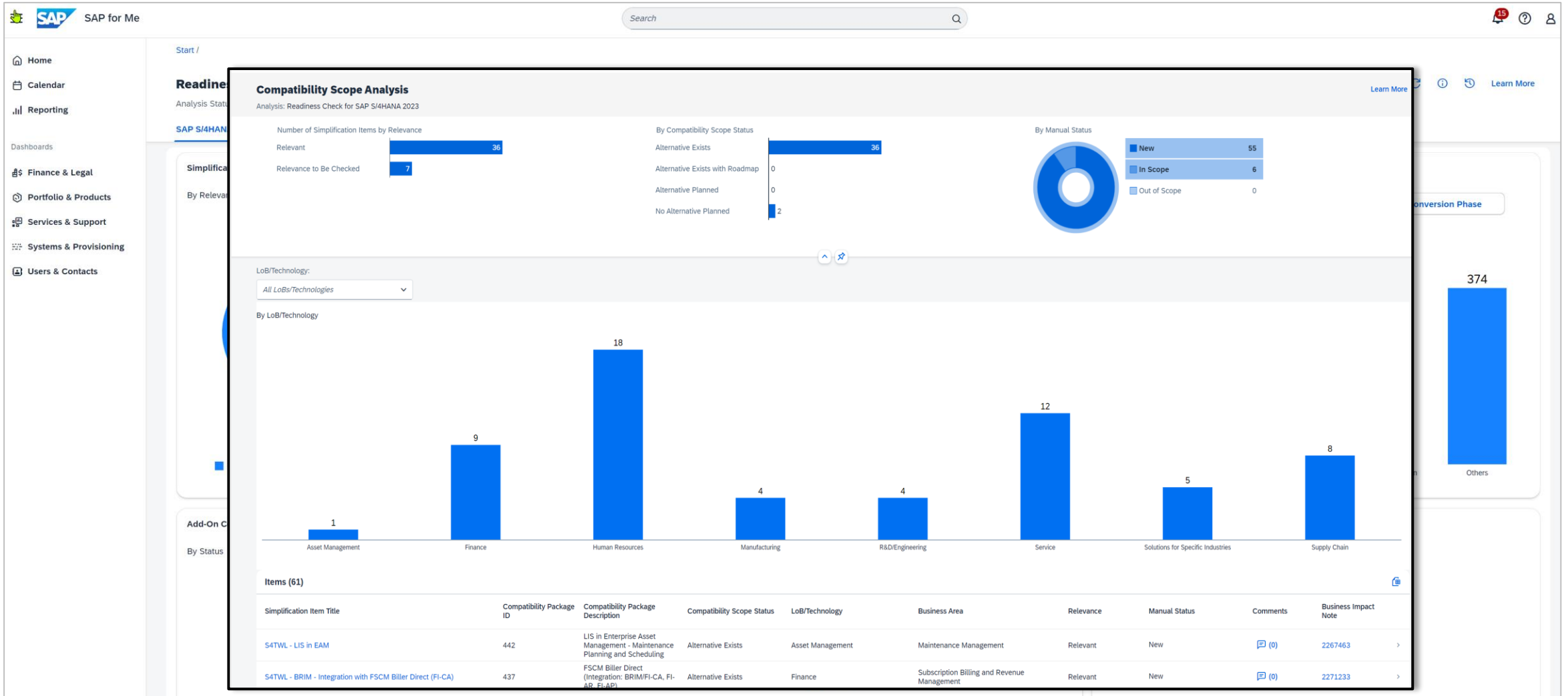
Status Comments

SAP S/4HANA Banking for payment centralization, available as add-on later.

Communication regarding Roadmaps

Compatibility Packs - eine Brücke in die S/4HANA-Welt

Der Readiness Check



Compatibility Packs - eine Brücke in die S/4HANA-Welt

Der Early Watch Alert Report: (1) Auf <https://me.sap.com> mit Ihrem S-User anmelden.

The screenshot displays the SAP for Me interface. The top navigation bar includes the SAP logo, 'SAP for Me', a search bar, and 'Explore SAP' with a notification badge for 184. The left sidebar contains navigation options: Home, Calendar, Reporting, Dashboards, Finance & Legal, Portfolio & Products, SAP Cloud Funds, **Services & Support** (highlighted with arrow 1), Systems & Provisioning, and Users & Contacts. The main content area is titled 'Services & Support' and features a horizontal menu with 'Overview', 'Knowledge Search', 'KBAs & Notes', 'Cases', 'Service Requests', 'Support Entitlements', **Diagnostics, Reporting & Analytics** (highlighted with arrow 2), 'ALM', and 'Private Cloud Workspace'. Below this menu are several service tiles: 'SAP EarlyWatch Alert Workspace' (26 new decisive red alerts), 'SAP EarlyWatch Alert Reports' (1144 very critical systems), 'SAP EarlyWatch Alert Dashboard', 'SAP EarlyWatch Alert Solution Finder' (highlighted with arrow 3), 'SAP Enterprise Support Reporting', 'Service Messages', 'Case Quality Report', and 'Technical Downtime Optimization'. A 'Get Assistance' button is located in the top right corner of the main content area, and a 'Feedback' button is on the far right edge.

Compatibility Packs - eine Brücke in die S/4HANA-Welt

Der Early Watch Alert Report: (2) CP Usage Report aufrufen

SAP for Me Search

"Compatibility Package Usage Expiry" OFF Semantic Search

Customer: **XYYGmbH (0001849091)** System ID: Enter System ID ... Database: Select Database ...

Support Region: Select Support Region ... Alert Rating: Enter Alert Rating ... Age: Enter Age ...

Alert Category: Enter Alert Category Name ... Product: Select Product ... Product Version: Select Product Version ...

Adapt Filters

3 Results | 1 Alerts | 1 Recommendations | 1 Descriptions

Compatibility Package Usage - Expiry 31.12.2025
Usage of functionality unavailable after 31.12.2025
3 Systems: AEE, AEP, AEQ
Recommendation (1)

Compatibility Package Usage - Expiry 31.12.2025
Usage rights will expire for the listed functionalities after the 31.12....
3 Systems: AEE, AEP, AEQ

Software Maintenance → Others
New in 3 systems

New in 3 systems


Compatibility Packs - eine Brücke in die S/4HANA-Welt

Der Early Watch Alert Report: (3) Beispiel-Report online



Compatibility Package Usage - Expiry 31.12.2025

Status: No rating System ID: [ASV](#) Installation: [21252479](#) Customer: [137831](#) Date: < [12.06.2024](#) > >>

The table below lists functionality identified by the usage of transactions, reports and WebDynpro applications. The usage is displayed as number of steps in the last month (LM) and last three months (L3M). More statistics can be found in the [SAP EarlyWatch Alert Dashboard](#).

Rating	Simplification Item ID	Simplification Item Title	Object Type	Object Name	SAP Note	CP ID	LM	L3M
	SI27: Logistics_PS	S4TWL - Project System - Compatibility Scope	Transaction	CJI3	3265838	459	0	13

The table below lists functionality identified through active or inactive characteristic business functions and installed add-on software components. The date last detected is the date of the last report where this object was found in the system.

Rating	Simplification Item ID	Simplification Item Title	Object Type	Object Name	SAP Note	CP ID	Date Last Detected
	SI13: HR_Enterprise_Services_Personnel_Administration	S4TWL - Enterprise Services Personnel Administration	Business Function (active)	HCM_SRV_CI_2	3224335	419	12.06.2024
	SI22: HR_Shared_Service_Framework	S4TWL - HR Shared Service Framework	Business Function (active)	HCM_SSC_EIC_1	3224338	118	12.06.2024

Recommendation: Usage rights will expire for the listed functionalities after the 31.12.2025. Please read the information provided in the listed SAP Notes as well as in central [SAP Note 2269324](#). Plan for a migration to the designated alternative functionalities before this point and inform your affected users. Please also refer to our [SAP blog "Compatibility Scope: What Happens after 2025/2030"](#).

Note: For usage identification we utilize the following technical object types and rules

- Transactions, reports, or WebDynpro applications used at least once in the last 90 days
- Active or inactive characteristic business functions
- Installed add-on software components

All checks are release dependent.

Please note that a listing of transactions, reports or WebDynpros in the table above does not necessarily mean that these objects become unavailable after 2025. In some cases, only particular features of these executables become unavailable, or objects are modernized with higher SAP S/4HANA versions and are still available beyond 2025 after an upgrade to these higher SAP S/4HANA versions.

Please also note that transactions, reports, or WebDynpro applications listed do not need to represent a complete list of all objects in use related to the compatibility scope functionality.

Therefore, please carefully read the listed SAP notes for details and check with your business departments the correctness of the results.

Compatibility Packs - eine Brücke in die S/4HANA-Welt

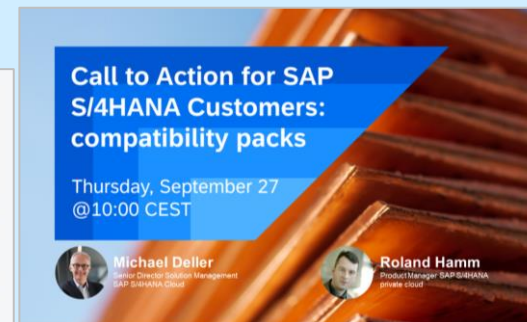
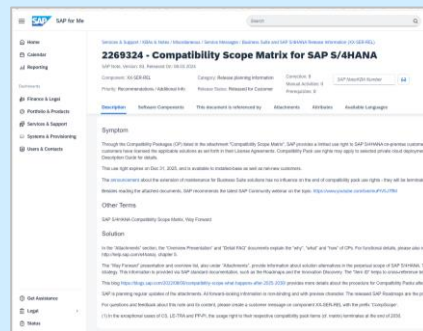
Beispiele

CP / Funktionalität	Situation	Way Forward
Project System	Historisch gewachsene Komplexitäten, technisch (GANTT Chart) und funktional (Integration)	Non-disruptiver Ansatz: technische Optimierung + Aufräumen (HANA Capabilities, low-adoption Szenarios, veraltete Technologien)
Human Capital Management	Strategische Lösung: SuccessFactors. Kunden, die länger als 2025 für den Umstieg benötigen, hat SAP "HCM in S/4HANA" als nicht-strategische Lösung mit Release 2022 ausgeliefert.	Datenmodell unverändert; neue Fioris, Rollen, Reports, neues Hybridszenario für time recording (planned for 2023 FPS2) Neue separate Lizenzierung, kompatibel mit der strategischen Lösung (SF) (Business-Metrik)
Warehouse Management	Basic Warehouse Management (LE-WM) Extended Warehouse Management (EWM) <i>Doppelte Funktionalitäten, Probleme in Integration und Datenmodellen</i>	Basic und Extended Warehouse Management technisch basierend auf EWM "Stockroom Management" für einfache Lager-Szenarien, technisch basierend auf LE-WM

Compatibility Packs - eine Brücke in die S/4HANA-Welt

Wo bekomme ich weitere Informationen?

- ✓ Zum Einstieg: SAP Community “Overview of Compatibility Packs” Webinar auf youtube: <https://www.youtube.com/watch?v=muPrV5J7ffM>
- ✓ Mehr Details: “The Way Forward in Detail – what are the go-to solutions” – bis runter auf den CP ID Level: <https://youtube.com/live/mY95BJZS0J0>
- ✓ Lesen Sie unseren zentralen [Blog](#) (fortlaufend aktualisiert)
- ✓ sowie den zentralen Hinweis [2269324](#) mit FAQ, Überblickspräsentation, der Matrix und dem WayForward Excel
- ✓ Bei weiteren Fragen können SAP Kunden eine customer message auf der Komponente XX-SER-REL mit dem Präfix ‘CompScope’ eröffnen.



Compatibility Packs - eine Brücke in die S/4HANA-Welt

SAP empfiehlt

- ✓ Nehmen Sie das Thema ernst – es birgt echte Risiken für Ihr Unternehmen.
- ✓ Nutzen Sie unsere Tools – Readiness Check und Early Watch Alert – um zu verstehen, ob / wie Ihr Unternehmen betroffen ist.
- ✓ Nutzen Sie die Service und Support Angebote der SAP.
- ✓ Nutzen Sie alle Veröffentlichungen – siehe vorige Folie.
- ✓ Definieren Sie Ihre Erneuerungsstrategie – mit dem Endpunkt 31. Dezember 2025. Die Go-to solutions müssen an diesem Tag produktiv sein.



Follow us



www.sap.com/contactsap

© 2024 SAP SE or an SAP affiliate company. All rights reserved.

No part of this publication may be reproduced or transmitted in any form or for any purpose without the express permission of SAP SE or an SAP affiliate company.

The information contained herein may be changed without prior notice. Some software products marketed by SAP SE and its distributors contain proprietary software components of other software vendors. National product specifications may vary.

These materials are provided by SAP SE or an SAP affiliate company for informational purposes only, without representation or warranty of any kind, and SAP or its affiliated companies shall not be liable for errors or omissions with respect to the materials. The only warranties for SAP or SAP affiliate company products and services are those that are set forth in the express warranty statements accompanying such products and services, if any. Nothing herein should be construed as constituting an additional warranty.

In particular, SAP SE or its affiliated companies have no obligation to pursue any course of business outlined in this document or any related presentation, or to develop or release any functionality mentioned therein. This document, or any related presentation, and SAP SE's or its affiliated companies' strategy and possible future developments, products, and/or platforms, directions, and functionality are all subject to change and may be changed by SAP SE or its affiliated companies at any time for any reason without notice. The information in this document is not a commitment, promise, or legal obligation to deliver any material, code, or functionality. All forward-looking statements are subject to various risks and uncertainties that could cause actual results to differ materially from expectations. Readers are cautioned not to place undue reliance on these forward-looking statements, and they should not be relied upon in making purchasing decisions.

SAP and other SAP products and services mentioned herein as well as their respective logos are trademarks or registered trademarks of SAP SE (or an SAP affiliate company) in Germany and other countries. All other product and service names mentioned are the trademarks of their respective companies.

See www.sap.com/trademark for additional trademark information and notices.

