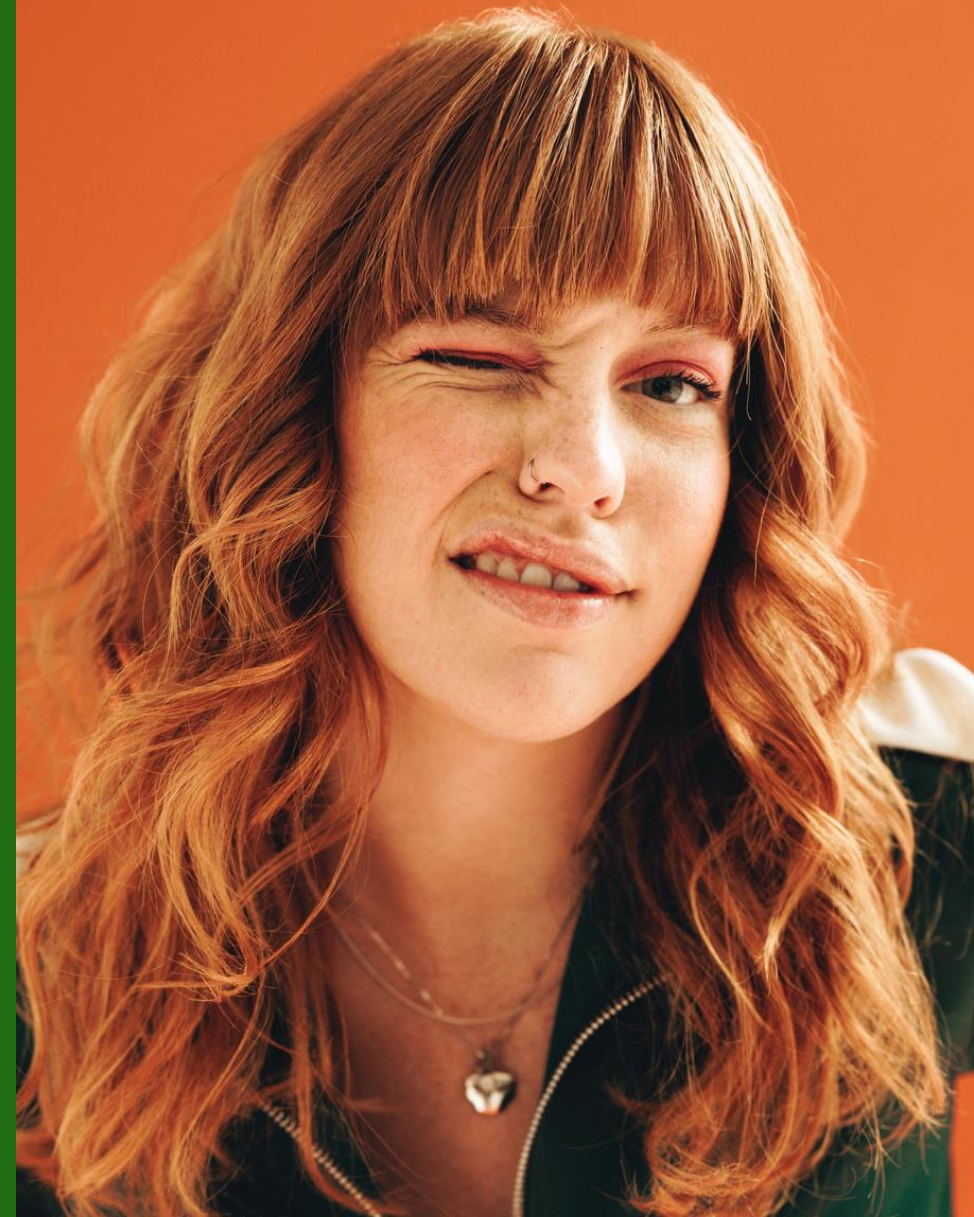


# Day 2 Operations

Optimizing Day 2 Operations  
for Your SAP BTP Apps:  
Overview session for the  
Expert and Beginner

**LIVE SESSION**



# Disclaimer

The information in this presentation is confidential and proprietary to SAP and may not be disclosed without the permission of SAP. Except for your obligation to protect confidential information, this presentation is not subject to your license agreement or any other service or subscription agreement with SAP. SAP has no obligation to pursue any course of business outlined in this presentation or any related document, or to develop or release any functionality mentioned therein.

This presentation, or any related document and SAP's strategy and possible future developments, products and or platforms directions and functionality are all subject to change and may be changed by SAP at any time for any reason without notice. The information in this presentation is not a commitment, promise or legal obligation to deliver any material, code or functionality. This presentation is provided without a warranty of any kind, either express or implied, including but not limited to, the implied warranties of merchantability, fitness for a particular purpose, or non-infringement. This presentation is for informational purposes and may not be incorporated into a contract. SAP assumes no responsibility for errors or omissions in this presentation, except if such damages were caused by SAP's intentional or gross negligence.

All forward-looking statements are subject to various risks and uncertainties that could cause actual results to differ materially from expectations. Readers are cautioned not to place undue reliance on these forward-looking statements, which speak only as of their dates, and they should not be relied upon in making purchasing decisions.

What does **day 2** mean?

**Day 0**

Planning / design /  
evaluation / purchasing

What does **day 2** mean?

**Day 1**

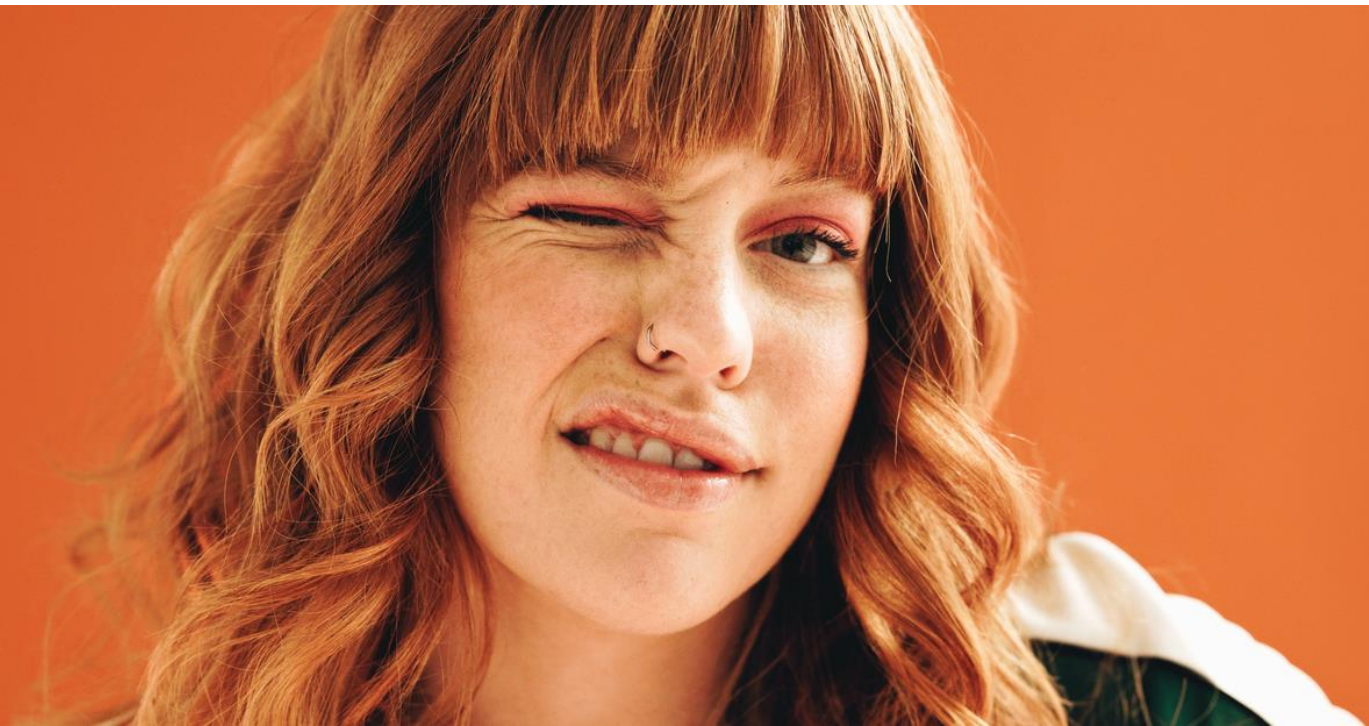
Implementation / deployment /  
configuration / integration / testing

What does **day 2** mean?

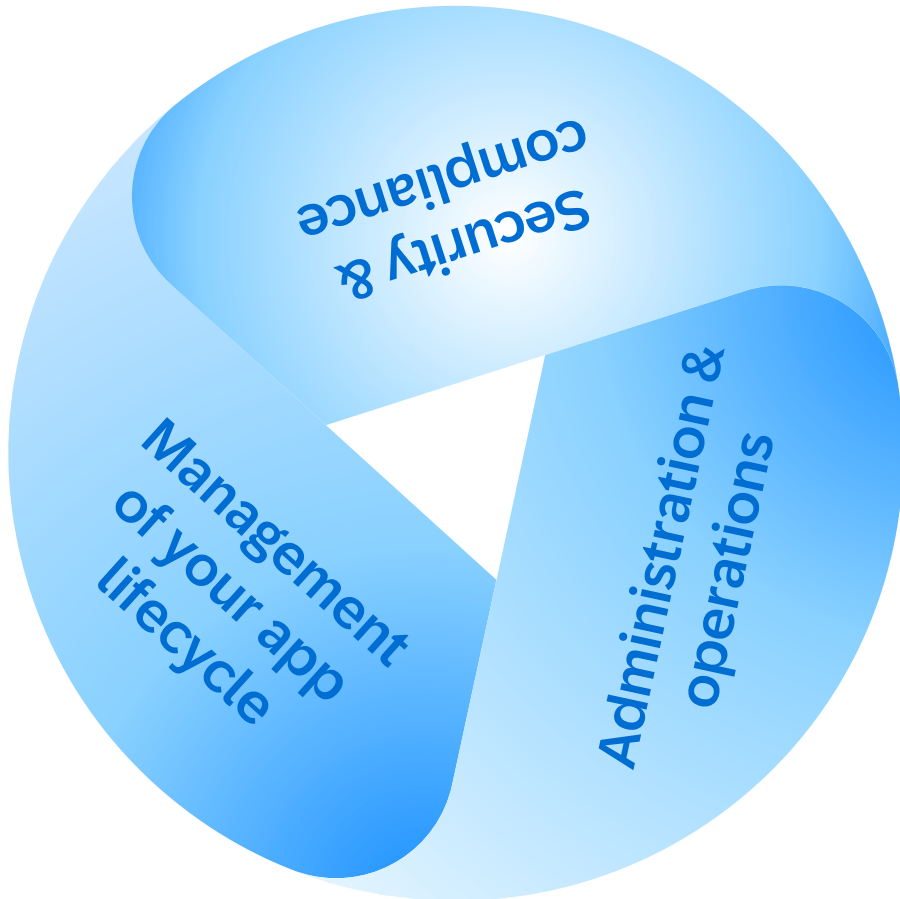
**Day 2**

Observability / troubleshooting /  
security & compliance / optimization

# Overview of webcast series



# Mastering Day 2 Operations in SAP BTP



- *Feb-25:* [SAP Cloud ALM](#) for SAP BTP
- *Mar-11:* [Terraform](#) provider for SAP BTP – Real world setup scenario
- *Mar-20:* Survive brownfield Terraform projects with Terraform Exporter for SAP BTP
- *Mar-27:* Observe your SAP BTP apps at depth via [SAP Cloud Logging](#)
- *Apr-03:* SAP BTP [Ops Automation](#) with SAP Cloud ALM
- *Apr-10:* Exploring SAP Automation Pilot: Kickstart your ops automation
- *Apr-15:* Enhanced remediation actions for your SAP HANA Cloud with SAP Automation Pilot
- *Apr-23:* Inspiring technical ops automations with SAP Automation Pilot
- *Jun-12:* SAP BTP [HA/DR](#): Overview and Roadmap
- *Jun-17:* Best practices to enable [Identify and Access Management](#)
- *Jun-26:* Secure configuration for your SAP BTP services: An overview of [SAP Security Recommendations](#)

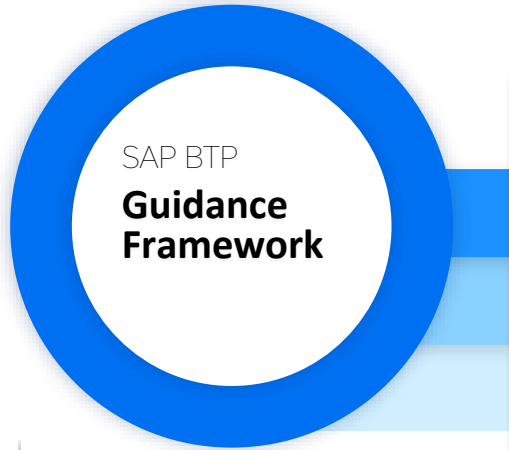


# SAP BTP Guidance Framework



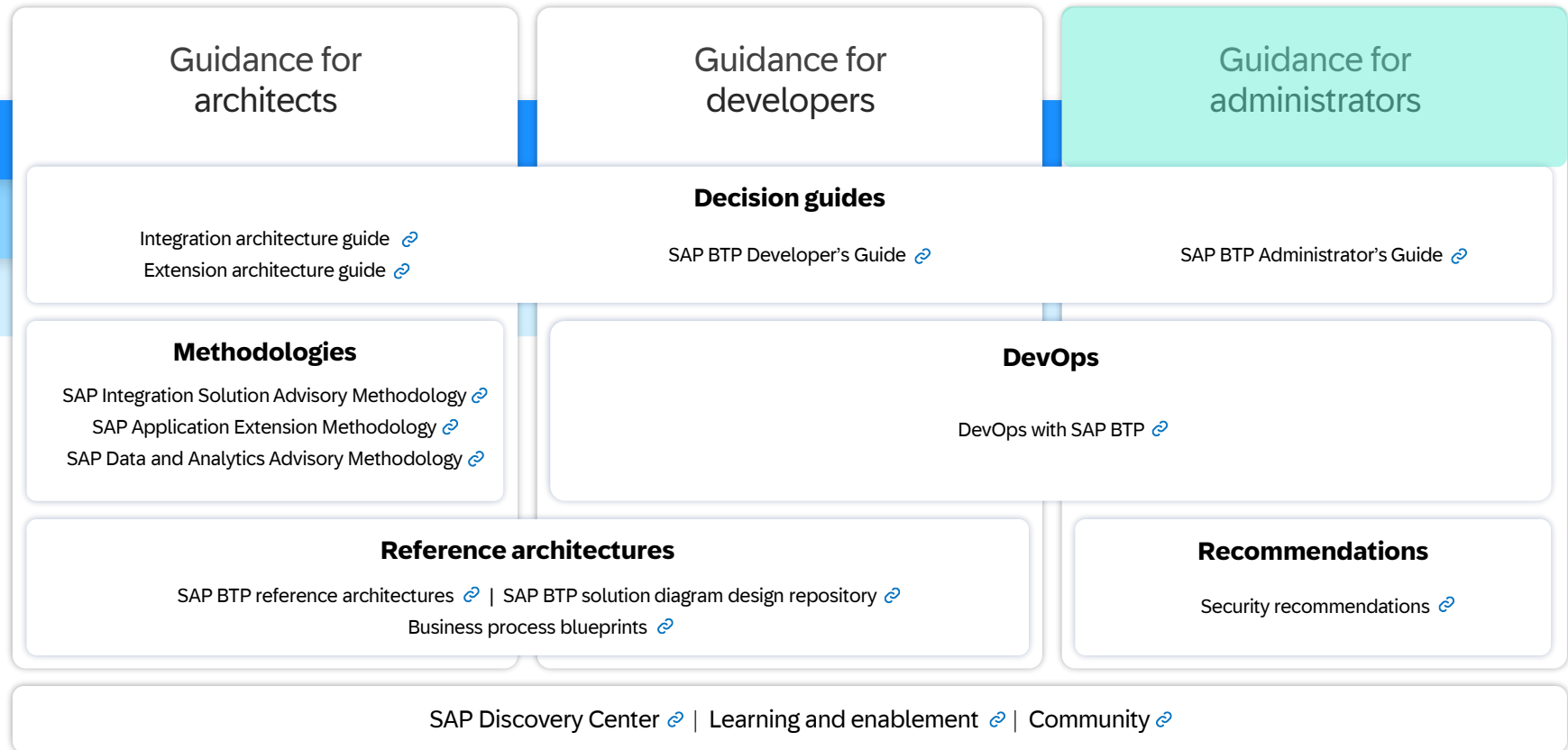


# If you are new to the topic, check out the SAP BTP Guidance Framework

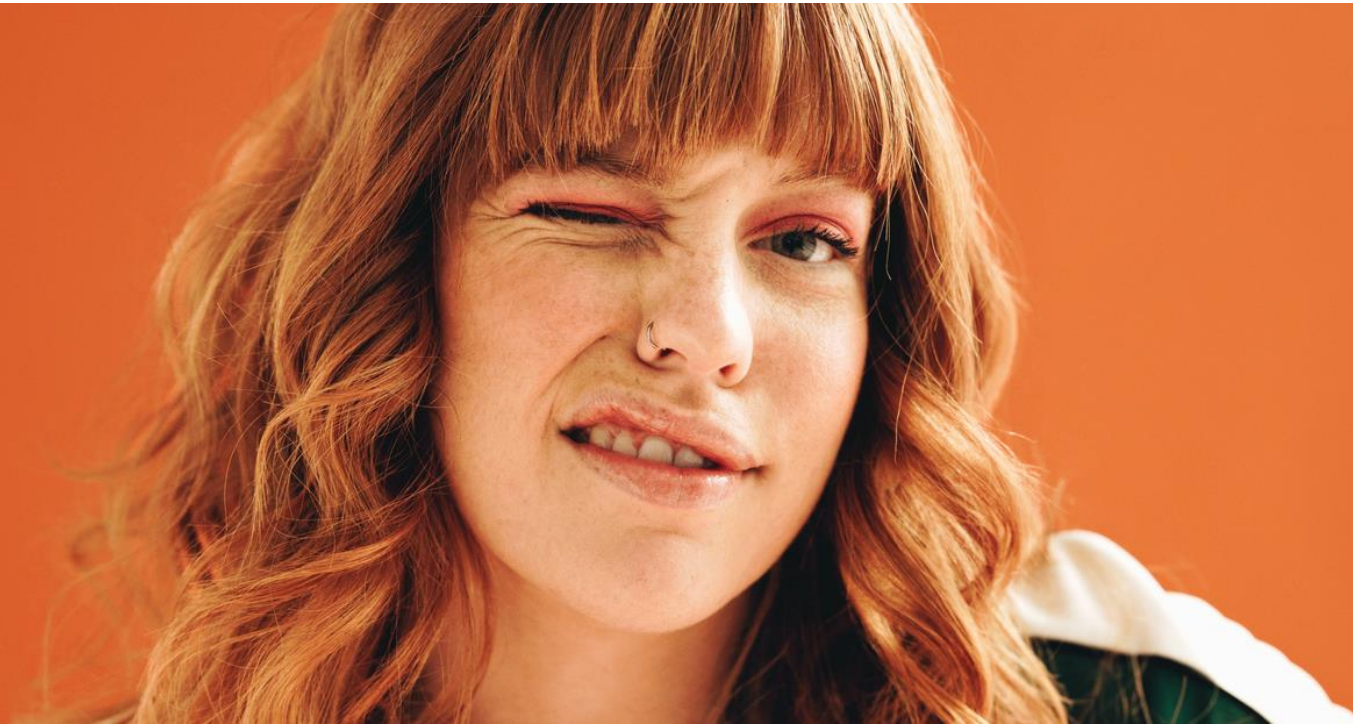


## WHAT IS IT?

SAP BTP Guidance Framework is your compass for architecting, implementing, and operating enterprise-grade solutions on SAP BTP. It provides a central access point for decision guides, reference architectures, methodologies, and many best practices.



# Day 2 ops topics – Administrate & operate the platform

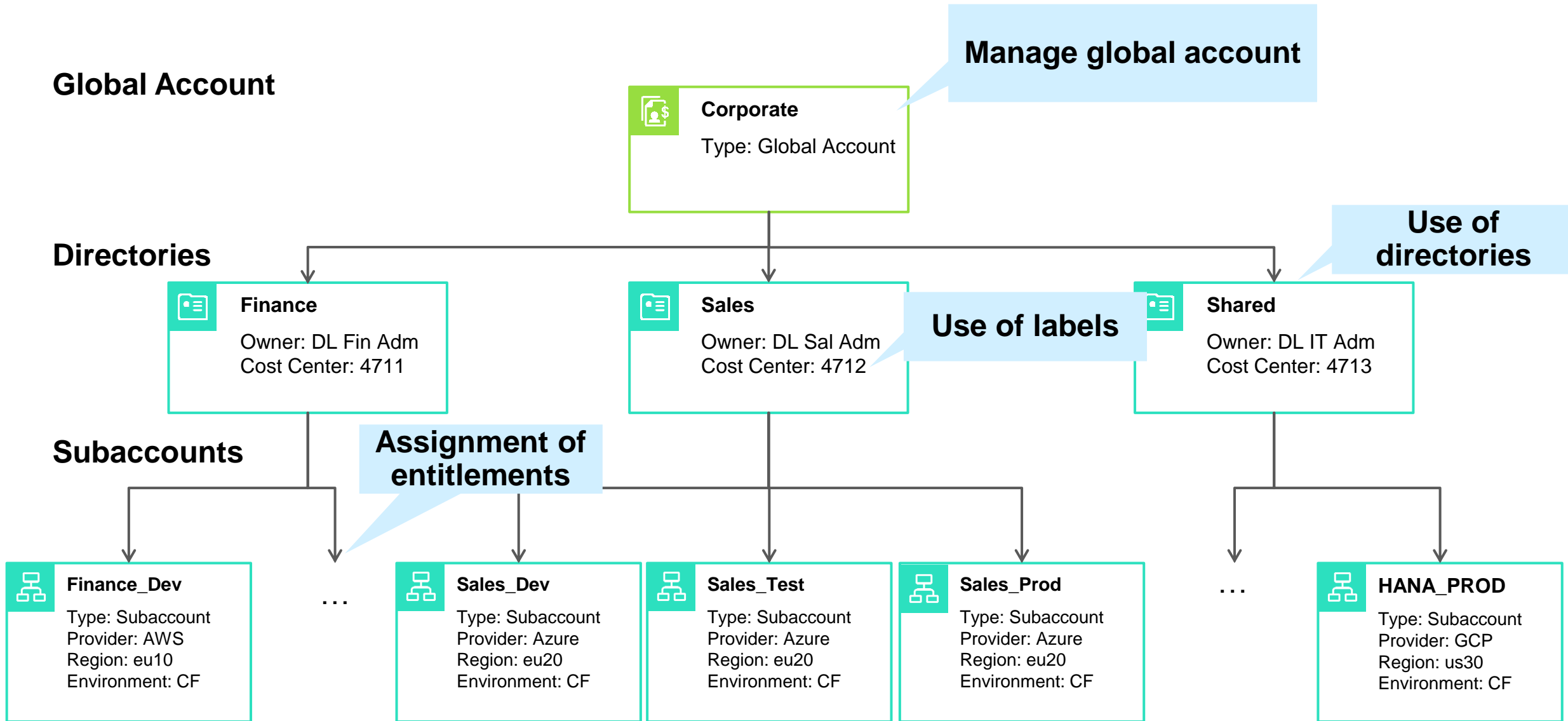


# SAP BTP Administrator's Guide

- Available in [SAP Help Portal](#)
  - Fka *Best Practices for SAP BTP guide*
- Provides **generic SAP BTP information**:
  - Basic platform concepts
  - Shared responsibility model
  - Checklists
- Contains detailed **planning** section (day 0):
  - Governance model
  - Account model
  - Security and compliance model
- Covers further aspects around **lifecycle management**:
  - Deployment and delivery (day 1)
  - Operations (day 2)

The screenshot shows the SAP Help Portal interface for the 'SAP BTP Administrator's Guide'. The page title is 'SAP BTP Administrator's Guide' with a language dropdown set to 'English'. The breadcrumb trail is 'Home > SAP Business Technology Platform (SAP BTP) > SAP BTP Administrator's Guide > SAP BTP Administrator's Guide'. A search bar is present with the text 'This document' and a search icon. The left sidebar contains a table of contents for the guide, with 'SAP BTP Administrator's Guide' selected. The main content area is titled 'SAP BTP Administrator's Guide' and contains an introductory paragraph: 'Learn about the SAP BTP Administrator's Guide and how you can use it to plan and set up your landscape and your lifecycle management for running applications on SAP Business Technology Platform (SAP BTP)'. Below this is a section 'Is This Guide for You?' with three paragraphs: 'If you're an architect or a development project lead, this guide helps you plan the architecture of your application and establish boundary conditions to foster the required level of governance and compliance for your development teams (such as by defining the best-fitting delivery and observability concepts).', 'If you're an administrator, this guide helps you define the correct organizational structure and create an account and security model. Also, it enables you to understand and plan tasks required to run your organization's applications on SAP BTP reliably - and which SAP BTP services to consider for doing so.', and 'If you're an SAP partner, this guide helps you to set up SAP BTP for running production services for your customers.' There are two callout boxes: a 'Tip' box stating 'If you're a developer, you have to define the correct methodologies and tools for your development project. In this case, use the SAP BTP Developer's Guide.' and a 'Note' box stating 'This guide is targeted at customers who want to run and use applications in a production environment. If you're an SAP BTP trial user, you might still find that some information in this guide is useful. Check out the following page for more details about trial accounts: Trial Accounts and Free Tier. Please note that the services available in the trial version differ from the ones in the enterprise version.' The right sidebar contains a section 'On this page' with links 'Is This Guide for You?', 'How to Use This Guide', and 'Contribute to This Guide', and a 'Was this page helpful?' section with 'Yes' and 'No' buttons.

# Administrate & operate the platform: Example for an account structure

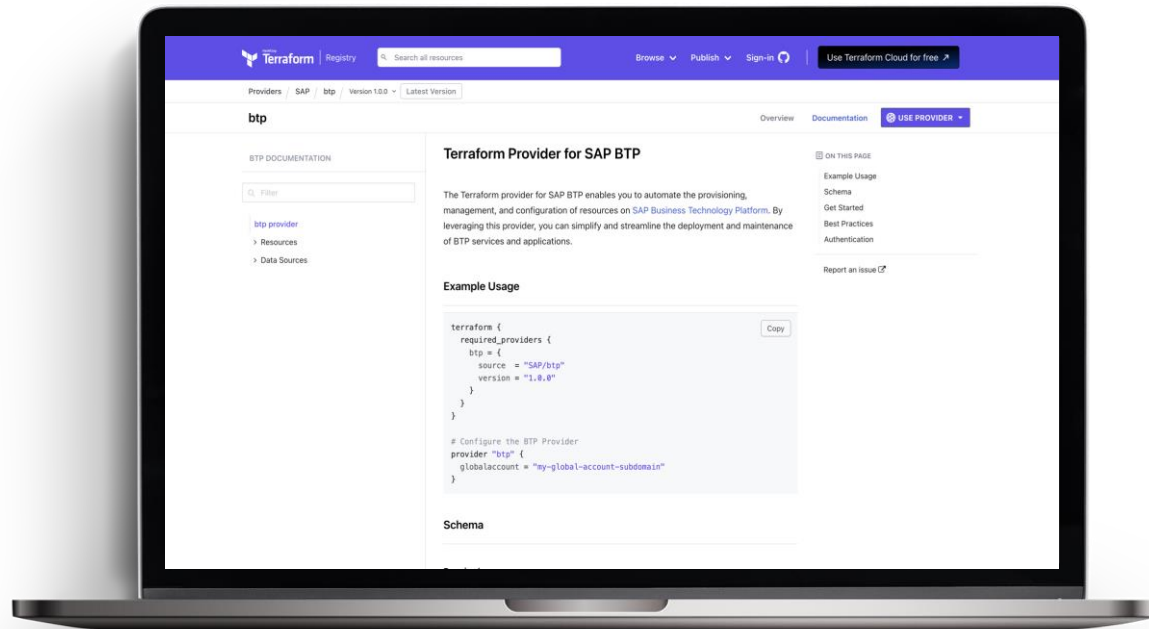


# Administrate & operate the platform: Terraform Provider for SAP BTP



**Mar-11: Terraform provider for SAP BTP – Real world setup scenario**

**Mar-20: Survive brownfield Terraform projects with Terraform Exporter for SAP BTP**



## Big ecosystem

with >3k providers for various technologies and platforms, Terraform is the industry standard for infrastructure-as-code



## Automated setup

and deletion of SAP BTP subaccounts and services instances with the Terraform CLI



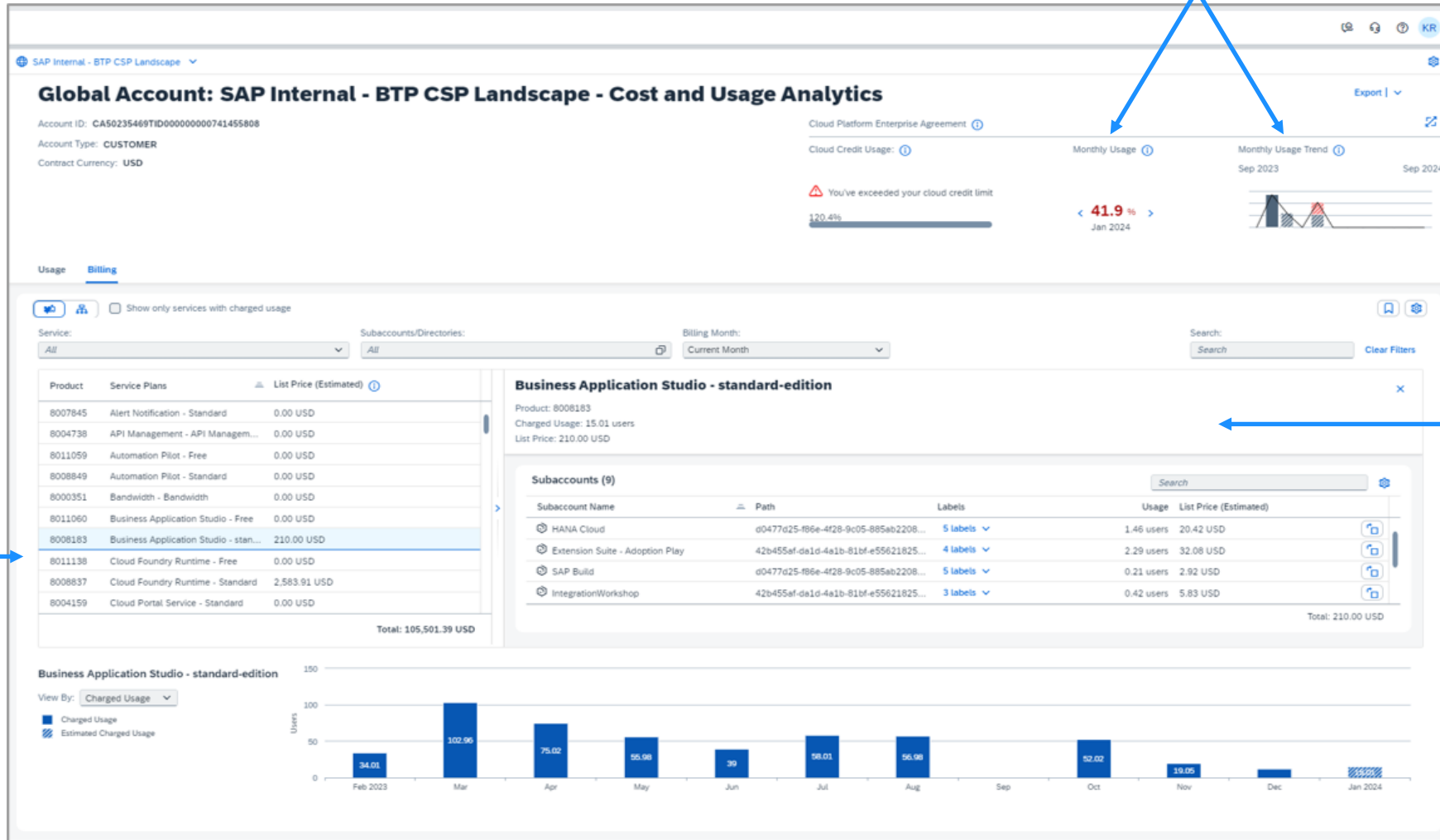
## Enables governance

of large SAP BTP (and non SAP BTP) landscapes

**For SAP BTP:** Manage Global Accounts, Directories and Subaccounts – set entitlements & subscriptions – manage environments (Cloud Foundry, Kyma) – manage service instances & bindings, trust, user & roles

# Administrate & operate the platform: Cost transparency

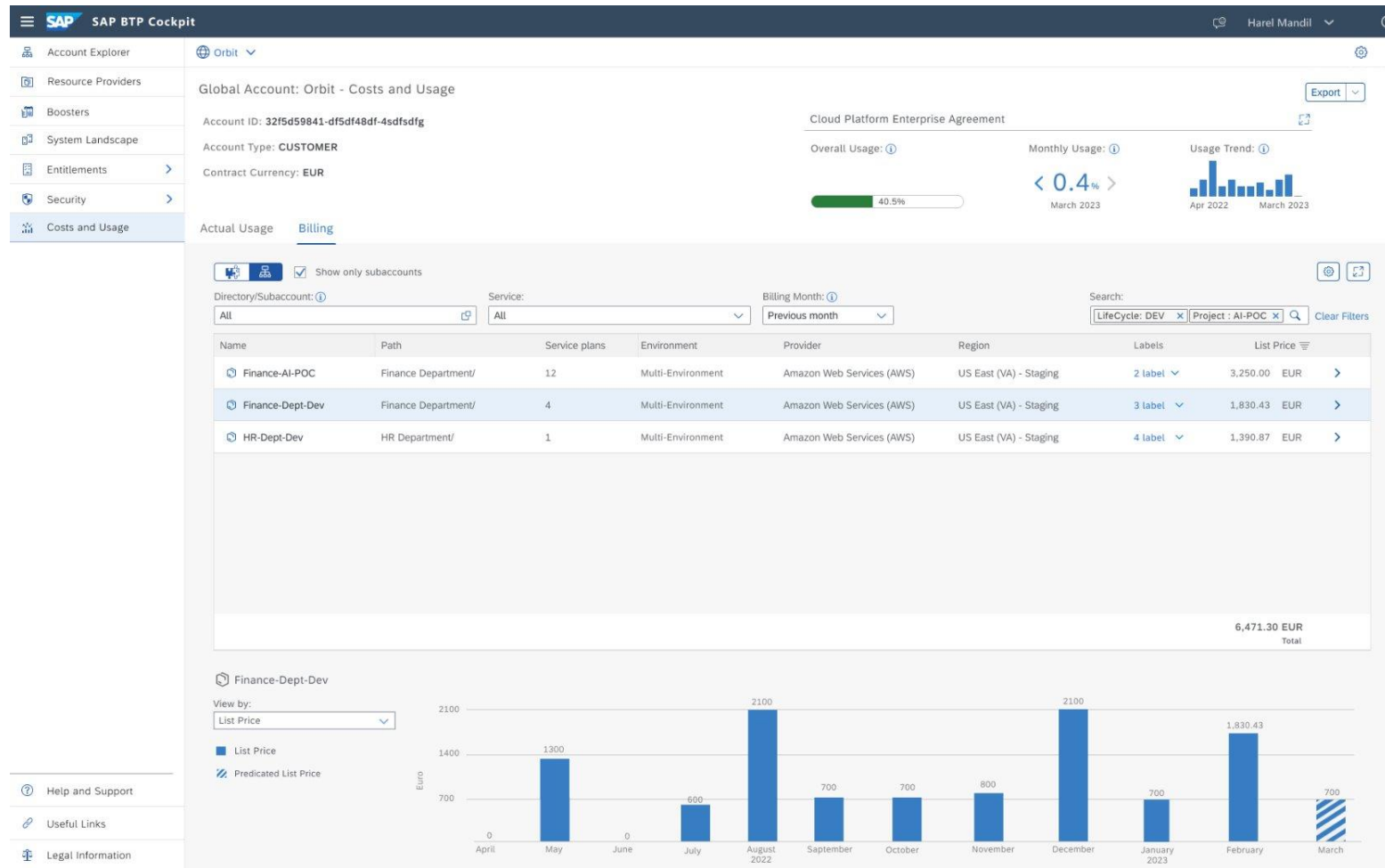
Monthly usage as percentage of cloud credits + trend



Total usage

Usage per service

# Administrate & operate the platform: Internal cross charging



- Split costs by **directory, subaccount or label**
- Cost distribution for **shared services** provisioned from central subaccounts (e.g. SAP Integration Suite, SAP HANA Cloud, SAP Build Work Zone):
  - Apply **fixed rate**, e.g. per user or per app
  - Implement **custom metering** e.g. via API management, usage analytics, resource monitoring

# Administrate & operate the platform: High Availability & Disaster Recovery



## High Availability

High availability refers to a service's ability to remain operational and accessible for users with minimal downtime and interruption.

→ Prevent the loss of service in first place.



## Disaster Recovery

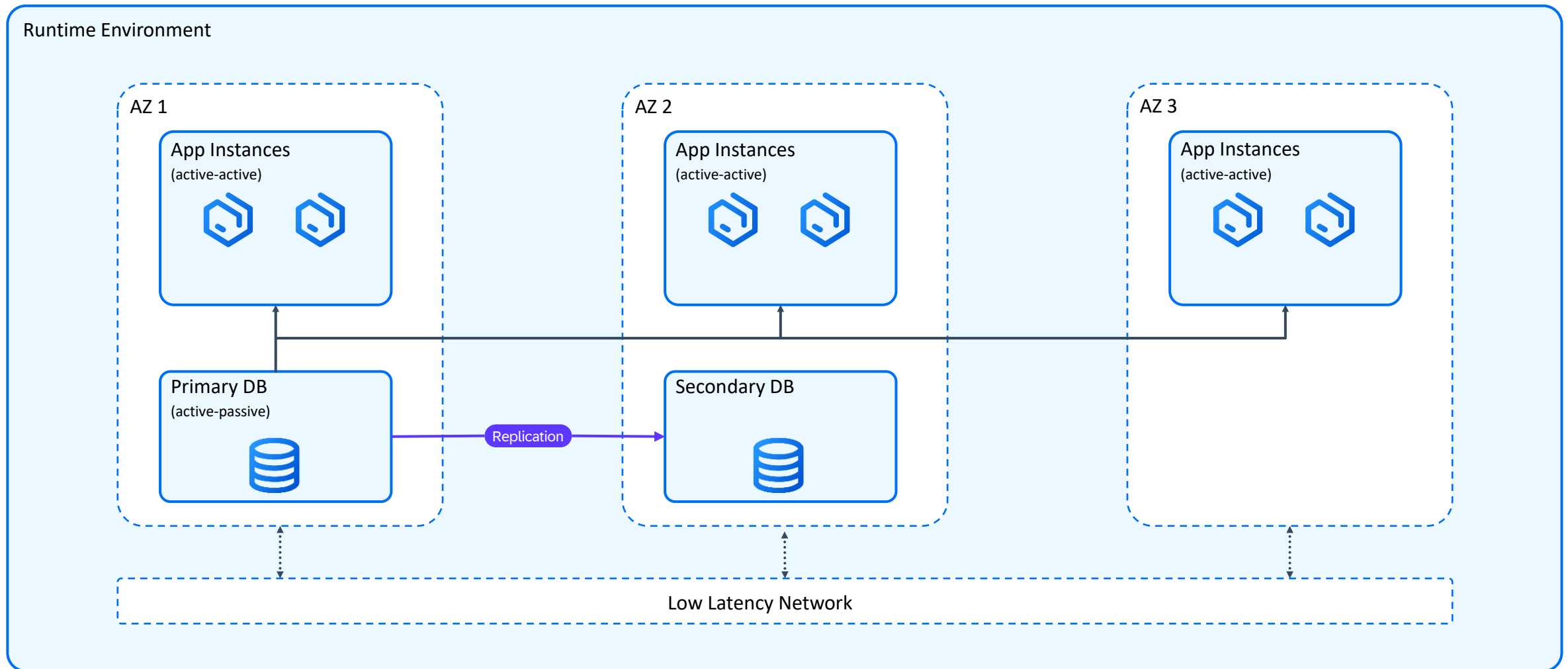
Disaster recovery refers to the processes put in place to restore and recover to an operational state following a disaster.

→ Protect applications/services from unwanted data loss.

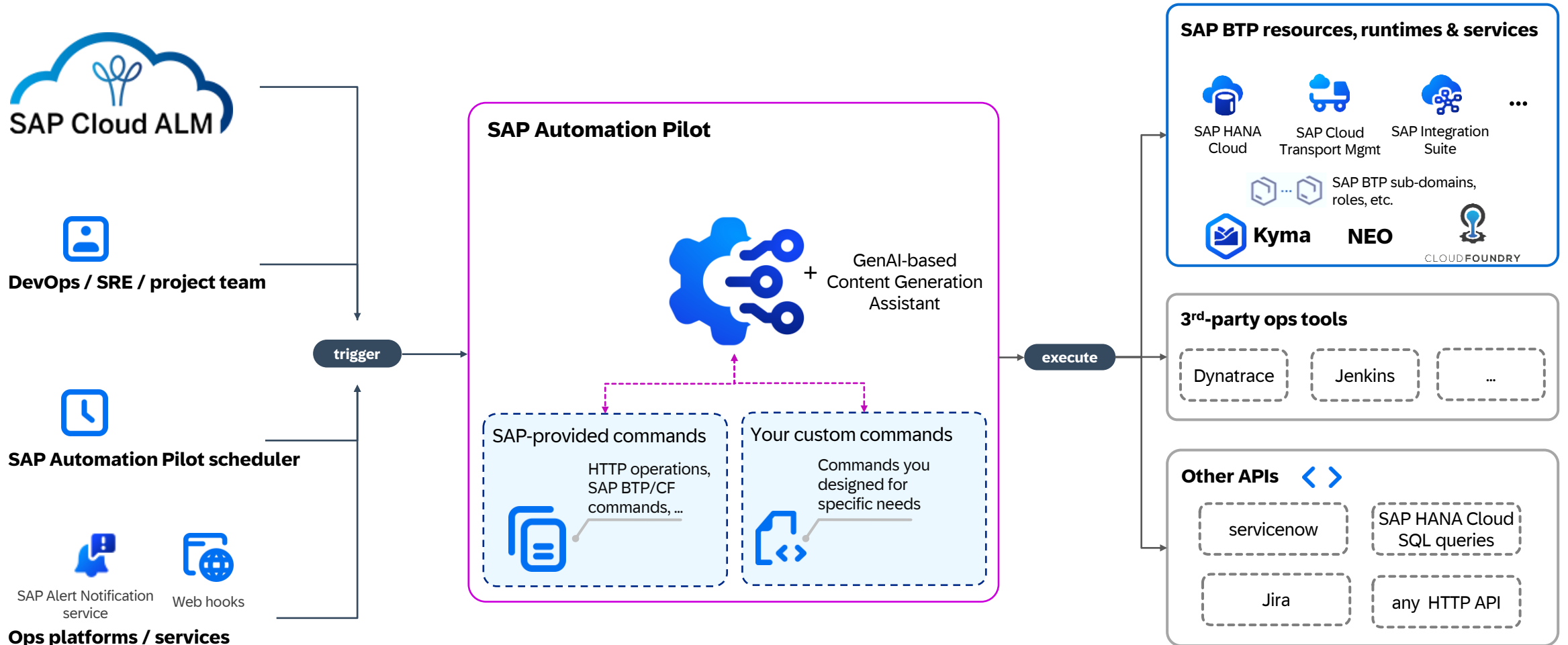
*High Availability is intended to handle problems while a system is running whereas Disaster Recovery is intended to handle problems after a system fails.*



# Administrate & operate the platform: Setup with multiple availability zones

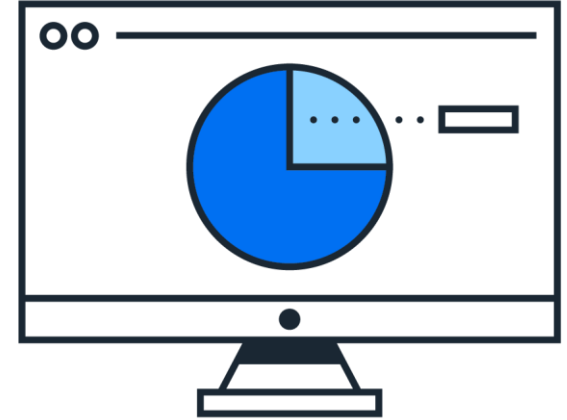


# Administrate & operate: automate recurring technical ops tasks

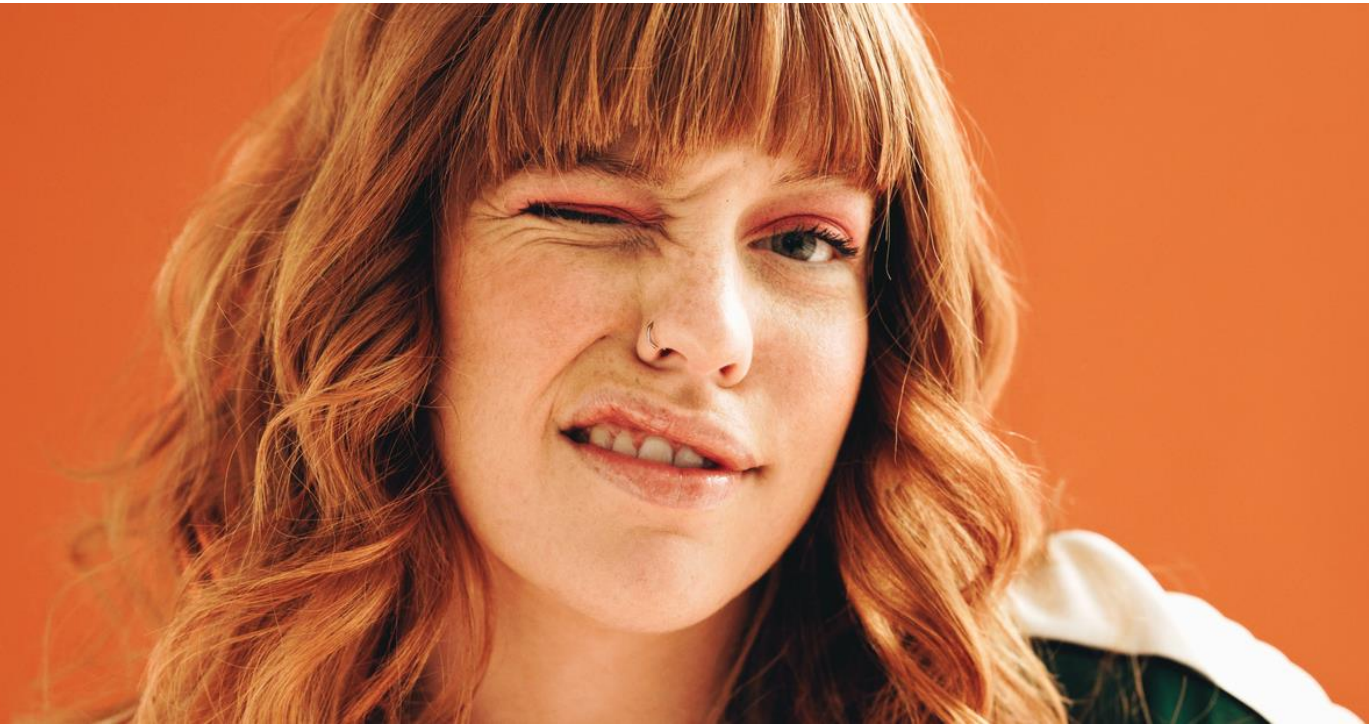


- Apr-10: Exploring SAP Automation Pilot: Kickstart your ops automation**
- Apr-15: Enhanced remediation actions for your SAP HANA Cloud with SAP Automation Pilot**
- Apr-23: Inspiring technical ops automations with SAP Automation Pilot**

# Demo



# Day 2 ops topics – Security



# Secure your SAP BTP apps and environment: SAP security recommendations

**Component**

Filter: [No Selection]

Filter Values

Select All

- ABAP Environment
- Application Logging Service
- Application Router
- Authorization and Trust Management Service
- Automation Pilot
- Business Rules Capability
- Cloud Connector
- Cloud Integration Automation

**Priority**

Filter: [No Selection]

Select All

- Advanced
- Critical
- None
- Recommended

**Secure Operations Map**

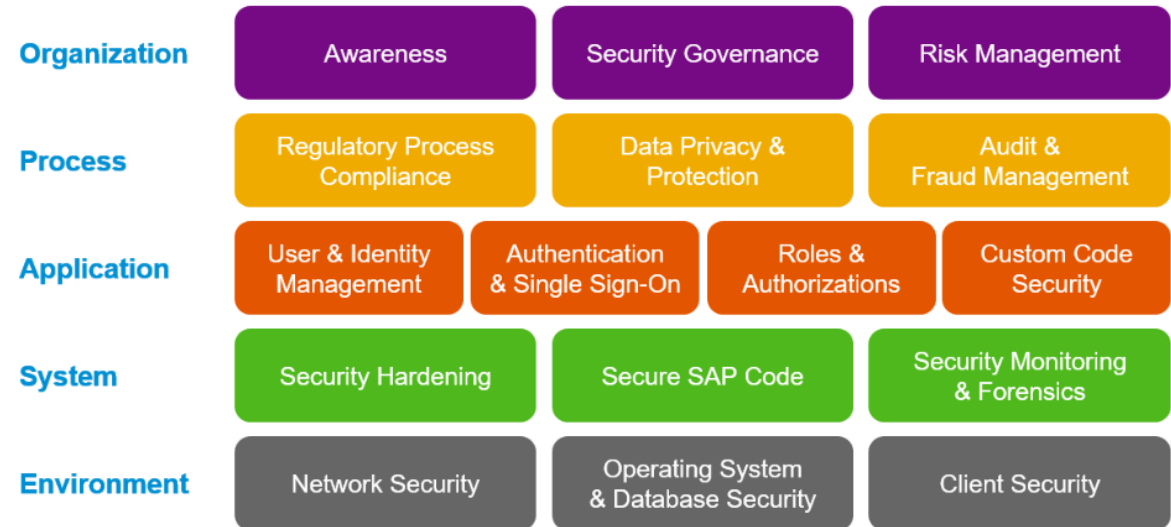
Filter: [No Selection]

Filter Values

Select All

- Audit & Fraud Management
- Authentication & Single Sign-On
- Awareness
- Client Security
- Custom Code Security
- Data Privacy & Protection
- Network Security
- None
- Regulatory Process Compliance

Getting an overview on the Secure Operations Map



[SAP BTP Security Recommendations | SAP Help Portal](#)

[Secure Operations Map | SAP Support Portal](#)



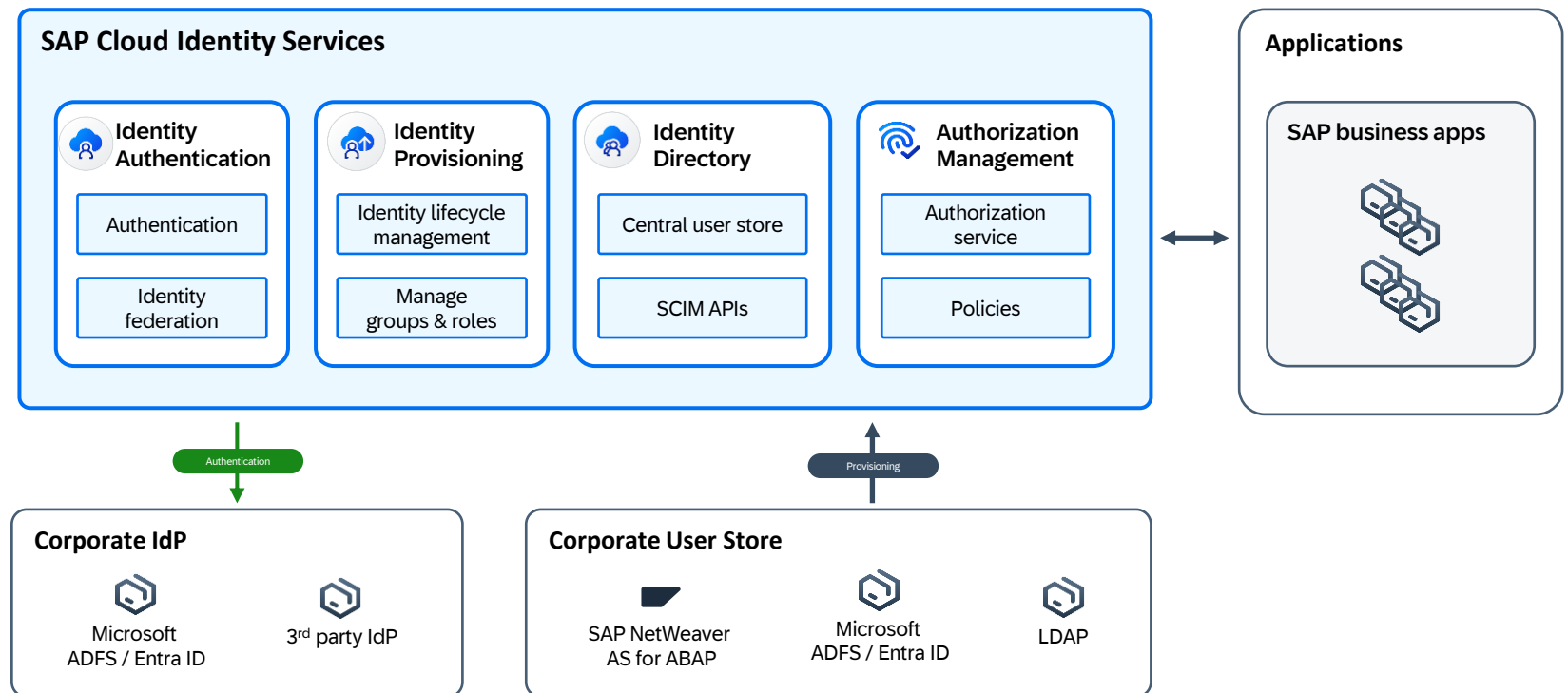
**Jun-26:**

**Secure configuration for your SAP BTP services: An overview of SAP Security Recommendations**

# Administrate & operate the platform: Identity and access management

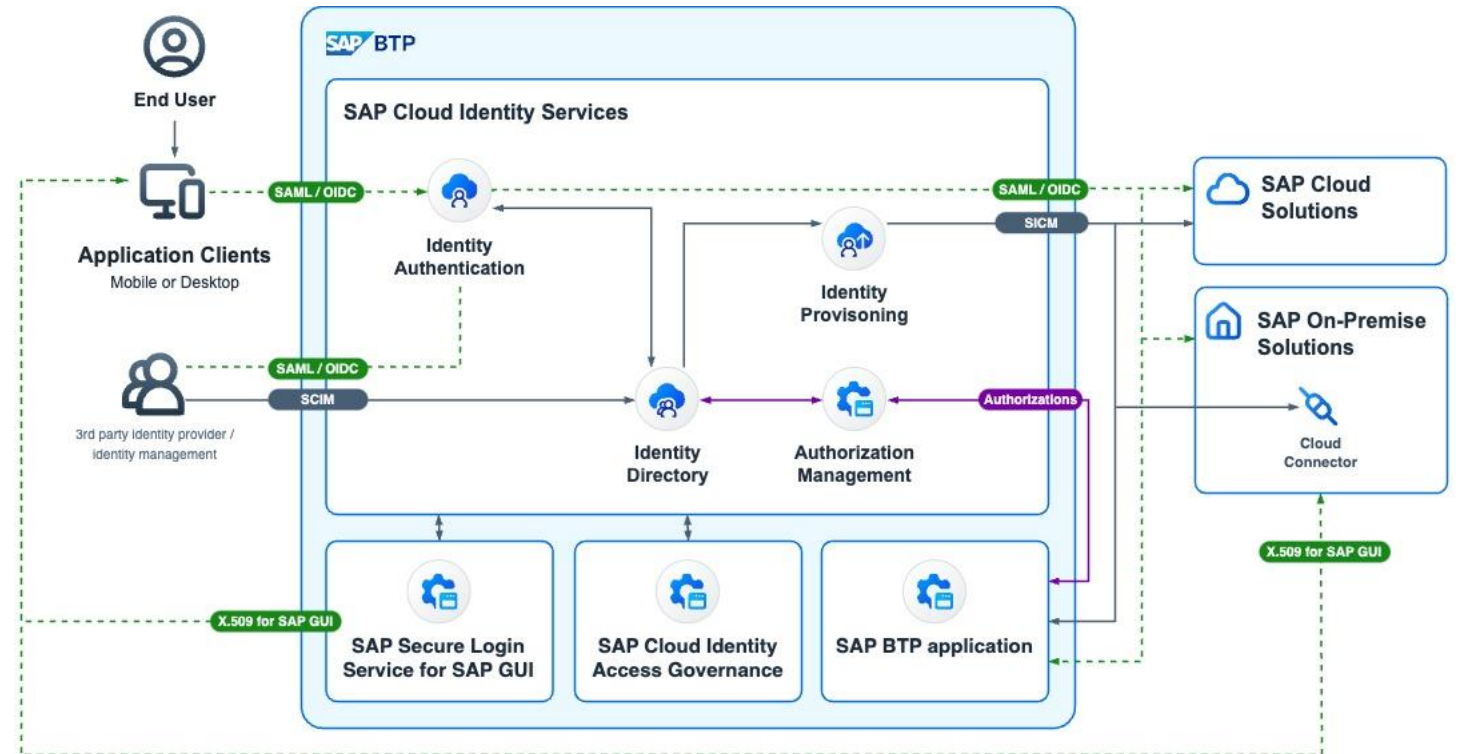
**SAP Cloud Identity Services** are the **default** services for authenticating and provisioning users in cloud solutions from SAP:

- Identity Authentication
- Identity Provisioning
- Authorization Management
- Integrated through the common Identity Directory



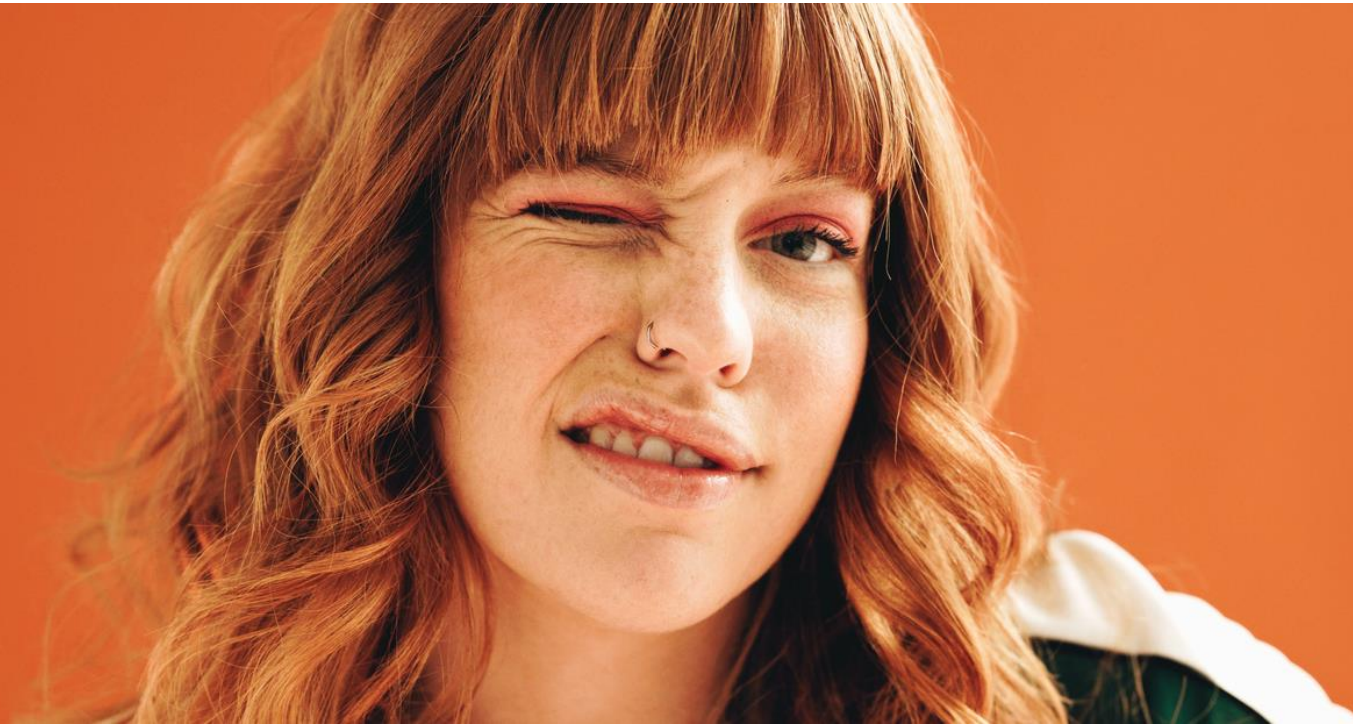
# Administrate & operate the platform: SAP Cloud Identity Services

- Fast adoption of SAP solutions through out-of-the-box integrations (bundles)
- Rapid scenario extensions with optimized SAP connectors
- Reduced efforts for point-to-point connections
- Modular architecture with fast adoption
- SCIM-compatible integration with 3<sup>rd</sup>-party identity management solutions
- Only one provisioning target for the SAP cloud landscape
- Optimized connectivity for SAP BTP applications



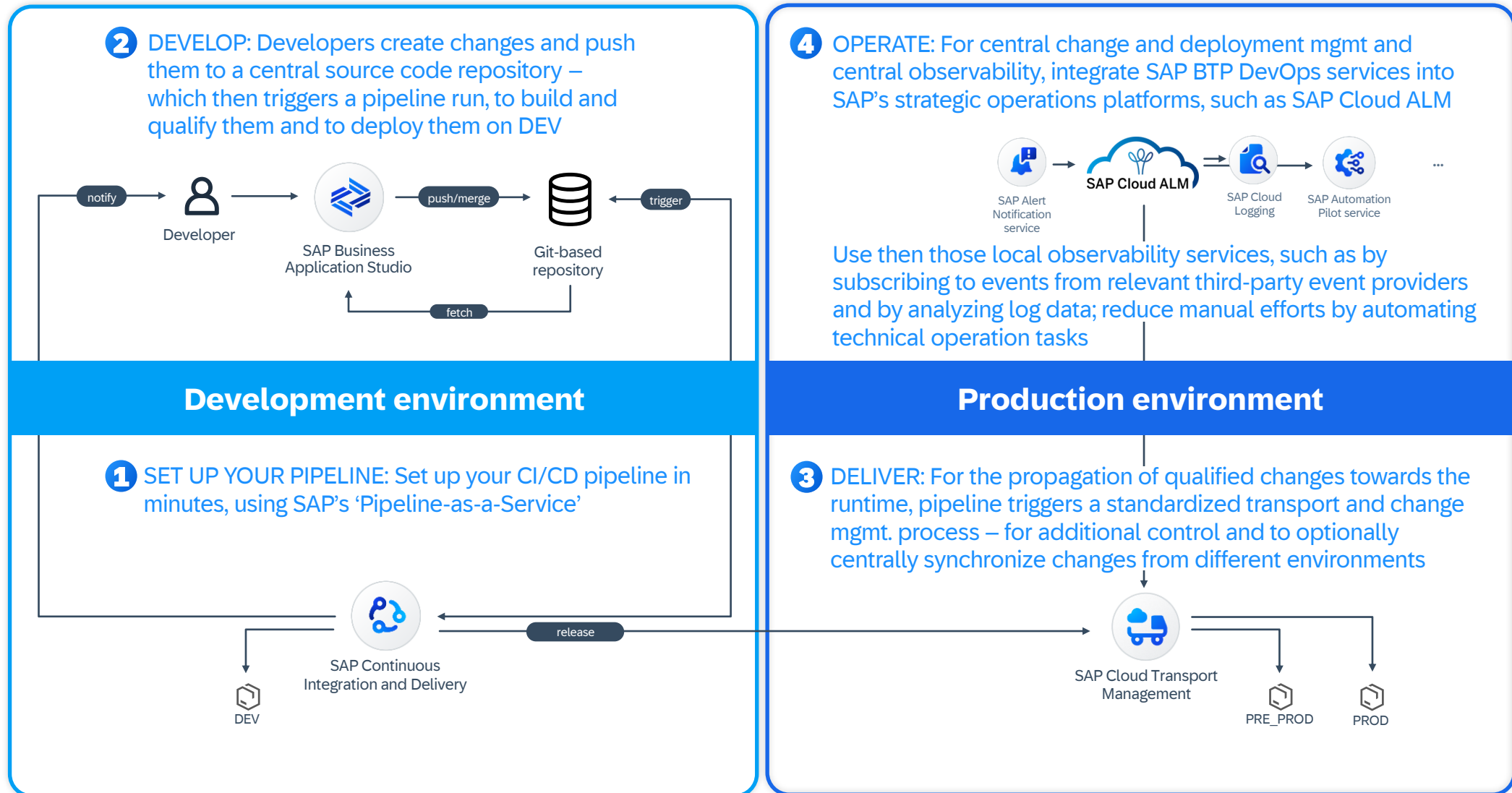
 **Jun-17:**  
**Best practices to enable Identify and Access Management**

# Day 2 ops topics – Manage your apps' lifecycles





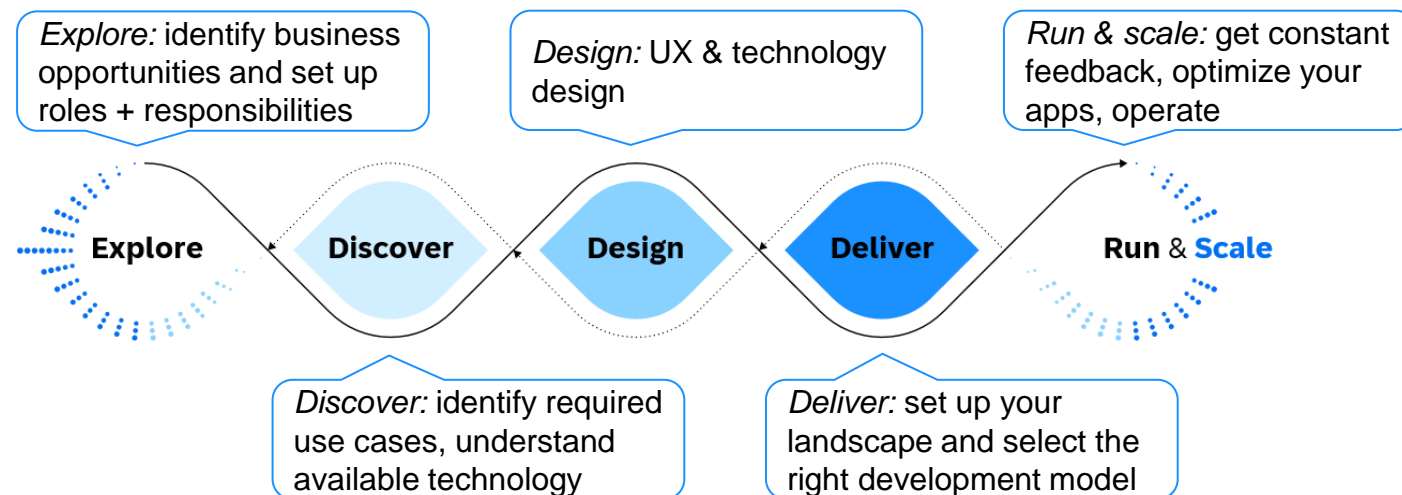
# Manage your app's lifecycle: Enable your dev teams to benefit from DevOps



# Manage your app's lifecycle: Develop and build

## SAP BTP Developer's guide

- Available in [SAP Help Portal](#)
- Complements the *SAP BTP Administrator's guide*
- Covers relevant aspects and best practices for teams developing on SAP BTP, on both programming models
  - ABAP Cloud
  - SAP Cloud Application Programming Model (CAP)



The screenshot shows the SAP BTP Developer's Guide page. The page title is "SAP BTP Developer's Guide". The content includes a navigation menu on the left, a search bar at the top right, and a main content area with sections like "Is This Guide for You?", "Prerequisites", and "Basic Platform Concepts".

**SAP BTP Developer's Guide**

The SAP BTP Developer's Guide is the starting point for developing a business application on SAP BTP. It contains recommendations and best practices that give you an overview of what you should consider when working on development projects on SAP BTP. It also contains links to step-by-step instructions when required.

**Is This Guide for You?**

If you're an **architect** or a **development project lead**, this guide helps you plan the architecture of your application and the services on SAP BTP you can use to achieve your goal.

If you're a **developer**, this guide helps you define the correct methodologies and tools for your development project.

If you're an **SAP partner**, this guide helps you to set up SAP BTP for developing and running production services for your customers.

**Note**

If you're an **administrator**, you have to set up the correct organizational structure to creating an account and security model. In this case, use the [SAP BTP Administrator's Guide](#).

**Note**

This guide is targeted at customers who want to run and use applications in a production environment. If you're an SAP BTP trial user, you might still find that some information in this guide is useful. Check out the following page for more details about trial accounts: [Trial Accounts and Free Tier](#). Please note that the services available in the trial version differ from the ones in the enterprise version.

**Prerequisites**

If you're new to SAP BTP, read:

- [SAP Business Technology Platform?](#)

SAP BTP is a cloud platform that brings together application development, automation, data management, analytics and planning, integration, and AI capabilities into one unified environment optimized for SAP applications. It offers:

- An intuitive, modern development environment for both, professional IT and citizen and business developers.
- Built-in data models, integrations, workflows, app templates, and AI business services
- Self-service data discovery, modeling, planning, and analytics for business users in a governed environment

• [SAP BTP Guidance Framework](#)

This is the central access point for architects, developers, and administrators to build and run enterprise-grade solutions on SAP BTP. It comprises decision guides, reference architectures, methodologies, recommendations, and DevOps principles.

• [Basic Platform Concepts](#)

Contains regions, runtimes, accounts, members, quotas, capabilities and links to in-depth explanations.

• [Getting Started Checklist](#)

Explains your responsibilities and SAP's responsibilities when it comes to application lifecycle management.

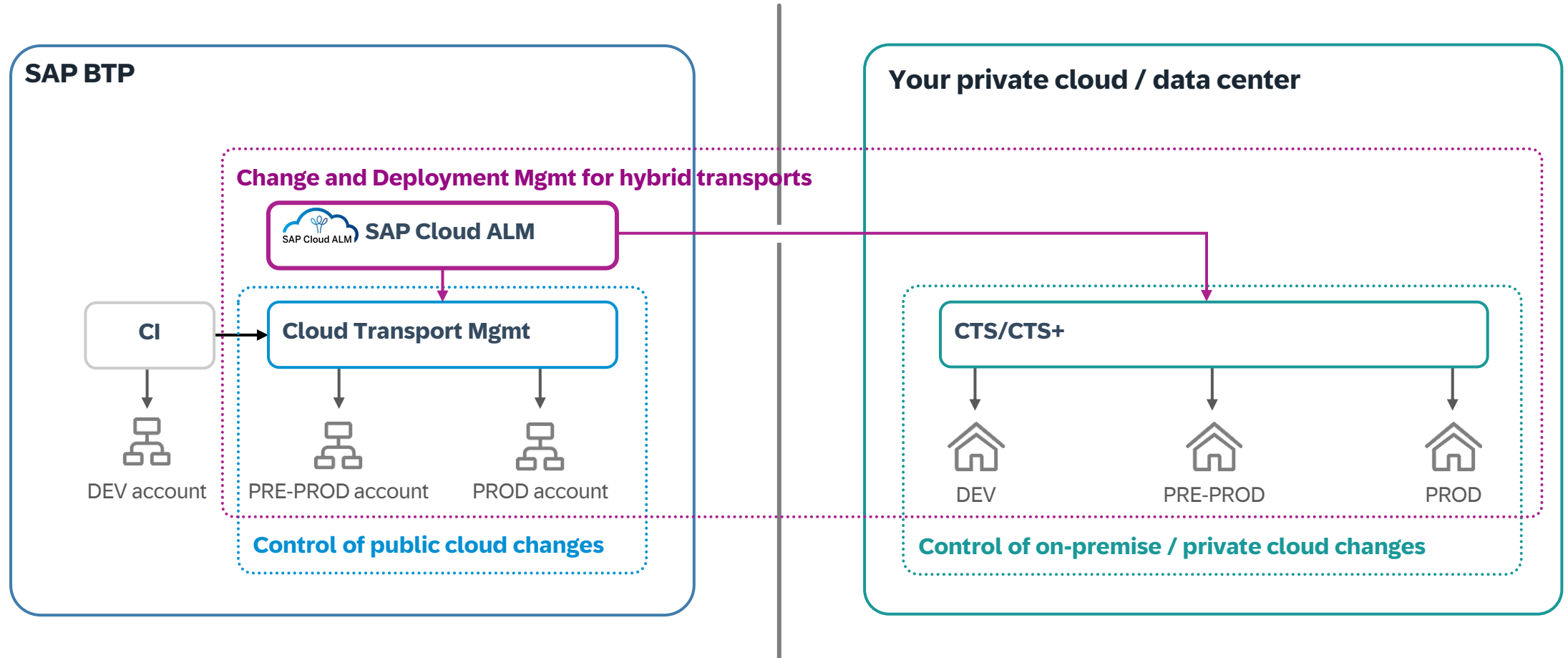
• [SAP BTP Administrator's Guide](#)

This guide helps you plan and set up your landscape and your lifecycle management for running applications on SAP Business Technology Platform (SAP BTP). It's part of the SAP BTP Guidance Framework and contains recommendations for planning development projects – from setting up the correct organizational structure to creating an account and security model, to operating applications.

• [SAP Discovery Center](#)

Helps you turn your data into business value with SAP BTP. In the SAP Discovery Center you can find end-to-end scenarios, called missions, the Service Catalog of SAP BTP, and reference architectures.

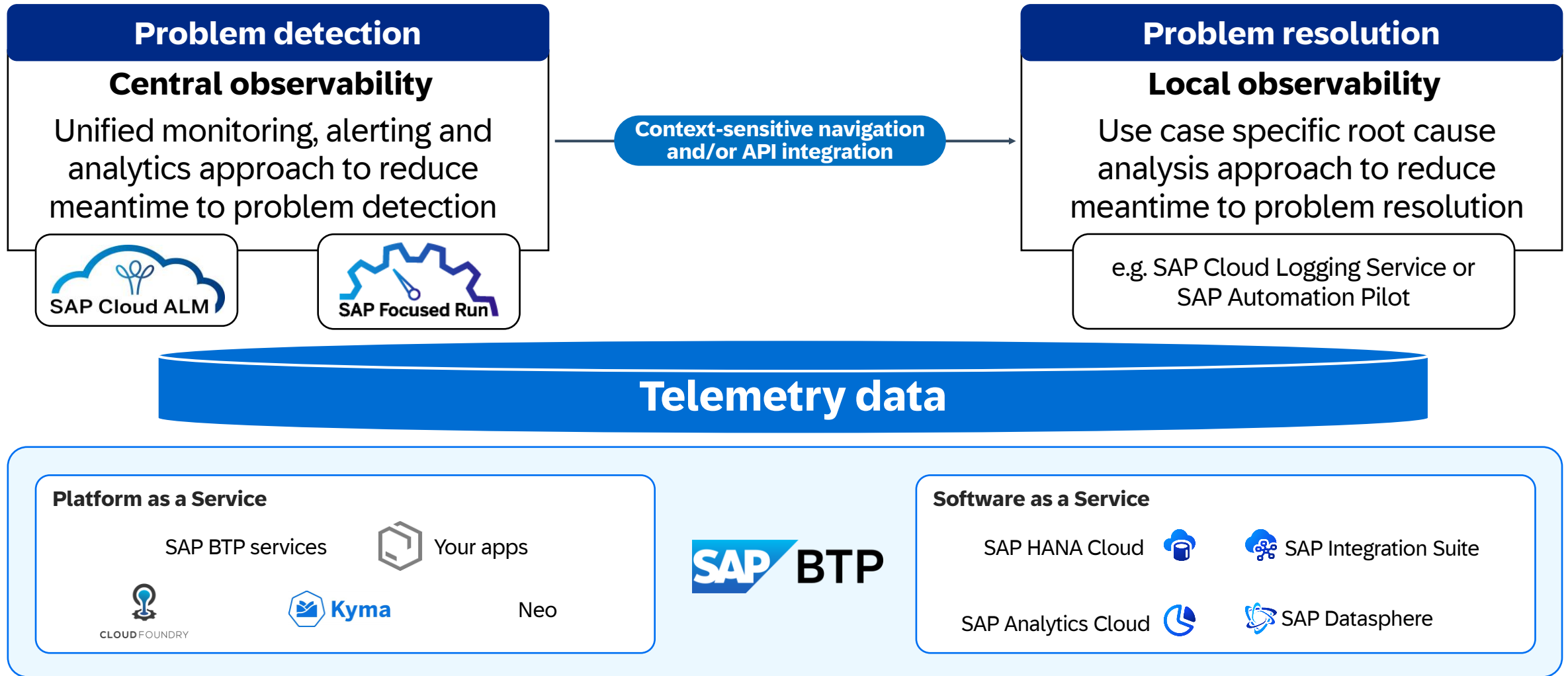
# Manage your app's lifecycle: Deliver



# Demo



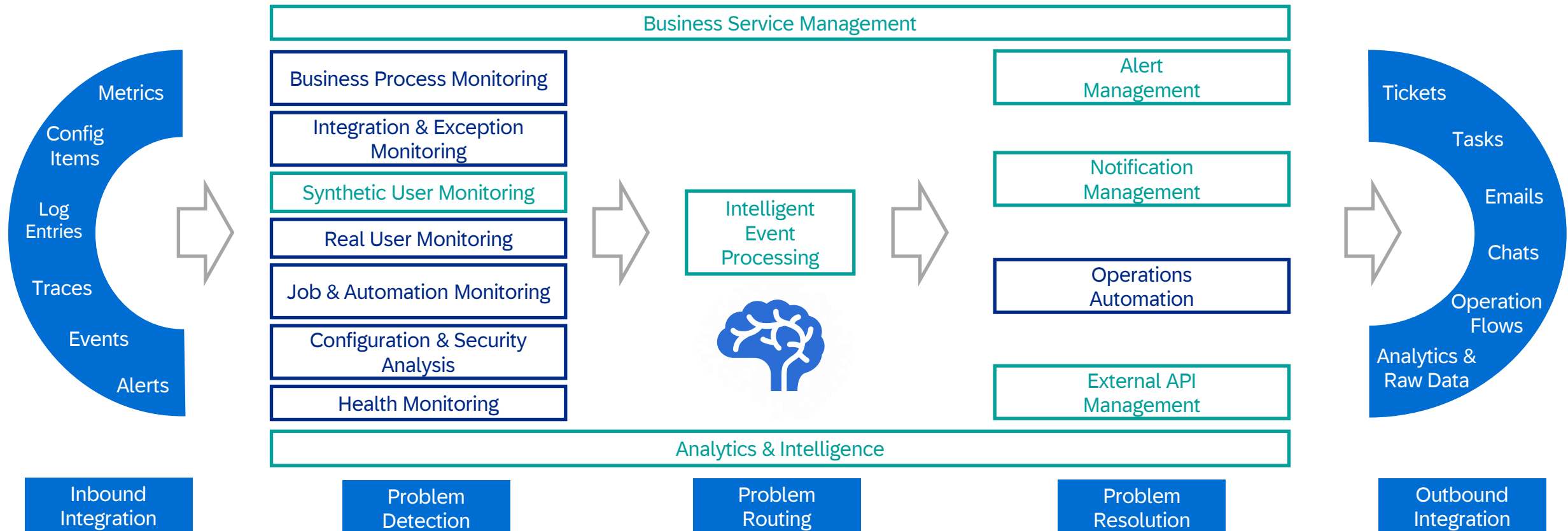
# Manage your app's lifecycle: Problem detection & resolution for SAP BTP



# Manage your app's lifecycle: SAP Cloud ALM for Operations

GROW WITH SAP

RISE WITH SAP



**Feb-25:**  
**SAP Cloud ALM for SAP BTP**

Product **agnostic** but open for non-SAP  
 Product **specific** but open for non-SAP

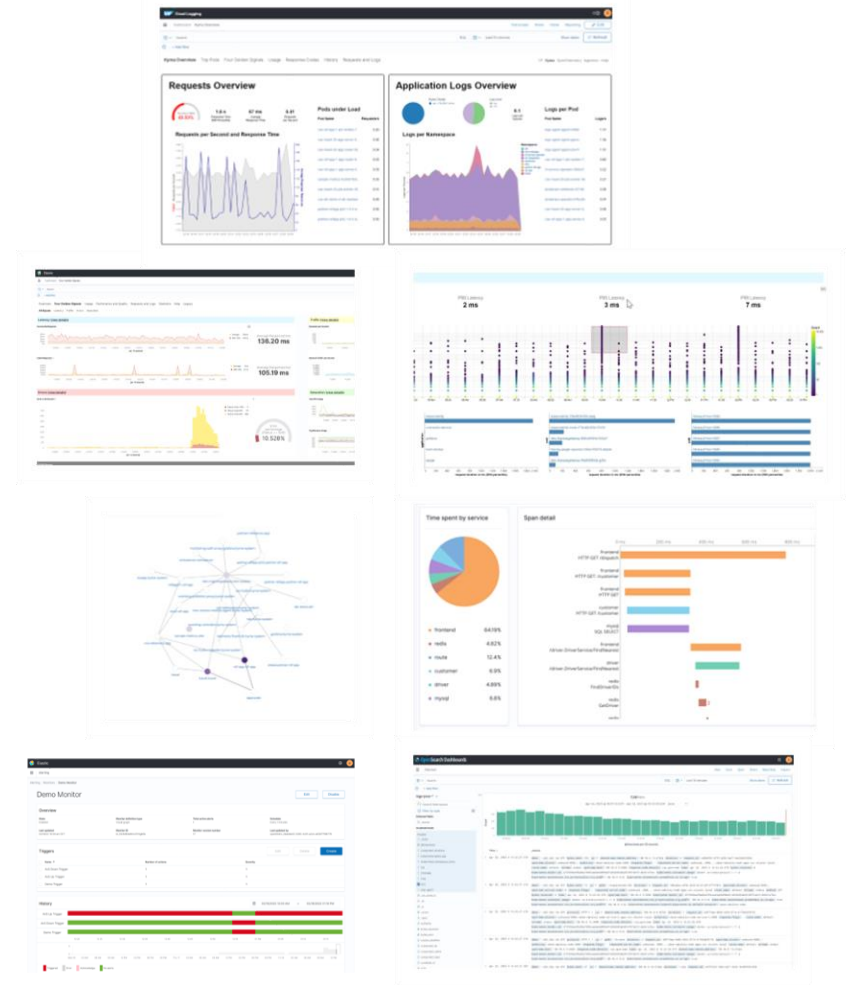
# Manage your app's lifecycle: App-specific debugging with SAP Cloud Logging

## SAP Cloud Logging service

- Comprehensive observability solution based on [logs](#), [metrics](#), [traces](#) – serves app developers + operators to analyse their SAP BTP workloads
- [Next gen](#) logging solution beyond SAP Application Logging (deprecated)

## Key Capabilities

- Dedicated support for SAP BTP runtimes (Cloud Foundry / Kyma) – smooth data ingestion + pre-built [analytical dashboards](#)
- Support for OpenTelemetry (logs, metrics, traces) + other protocols
- Advanced data processing & customization:
  - [Alerting](#) and anomaly detection
  - Configurable data & retention management
  - Customizable content & access management

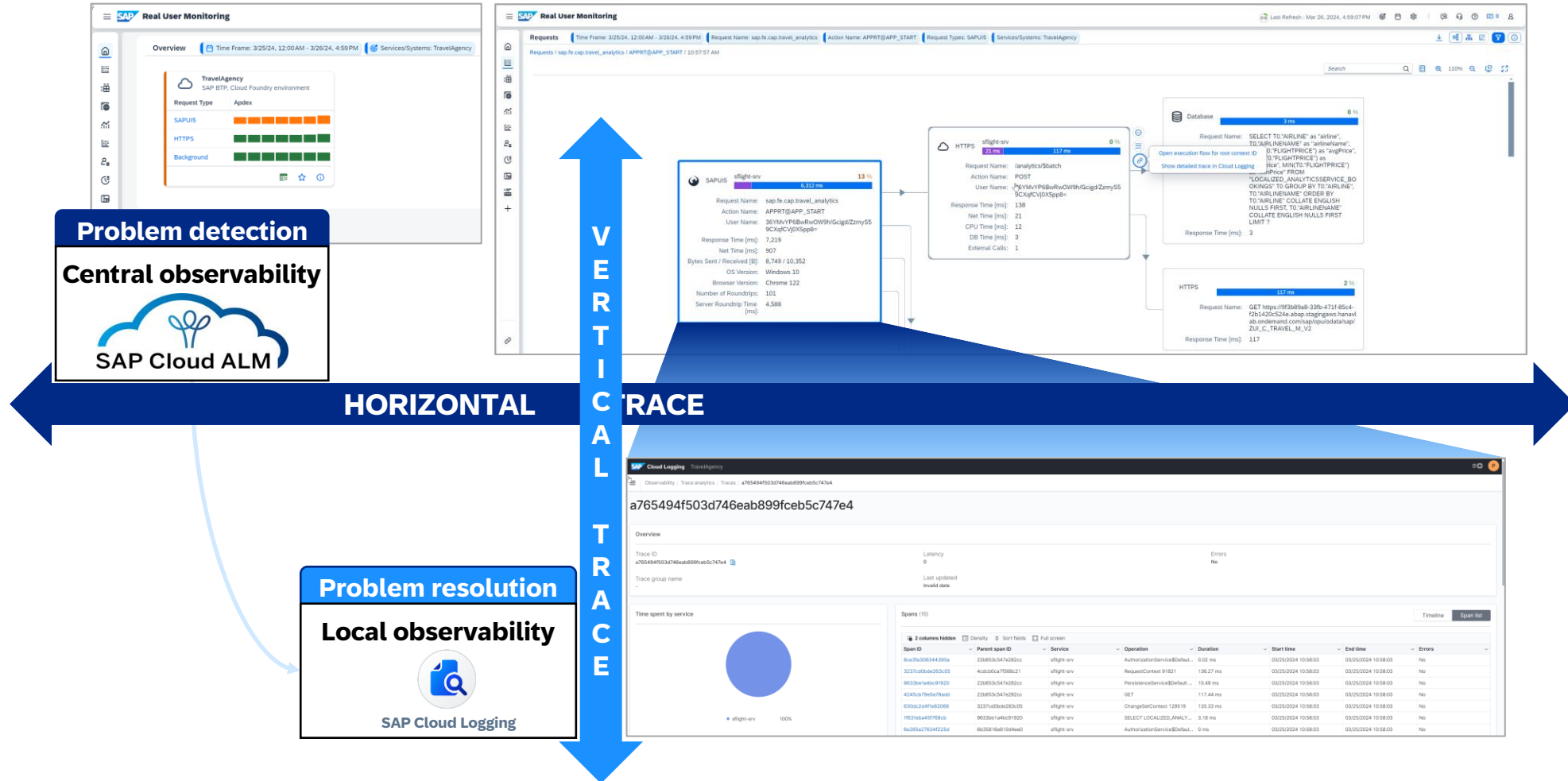


Mar-27



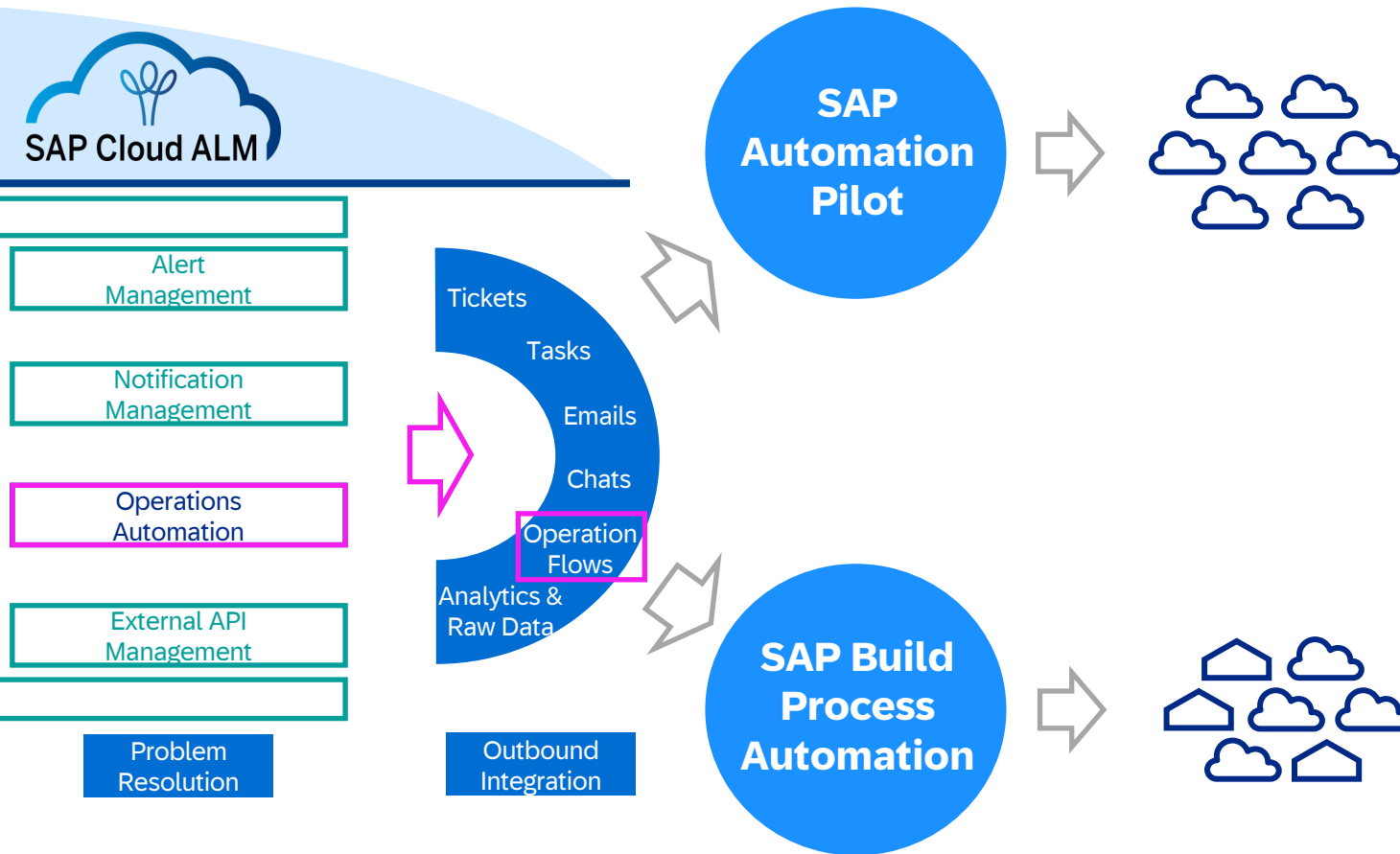
Observe your SAP BTP apps at depth via SAP Cloud Logging

# Manage your app's lifecycle: interplay of central and local observability





# Manage your app's lifecycle: automate recurring technical ops tasks centrally



**Target:** Execute **corrective actions** initiated by **SAP Cloud ALM events**

## Integration with SAP Automation Pilot

- Relevant for **SAP PaaS** or **SAP SaaS** landscapes
- Intended for DevOps and app management organizations

## Integration with SAP Build Process Automation

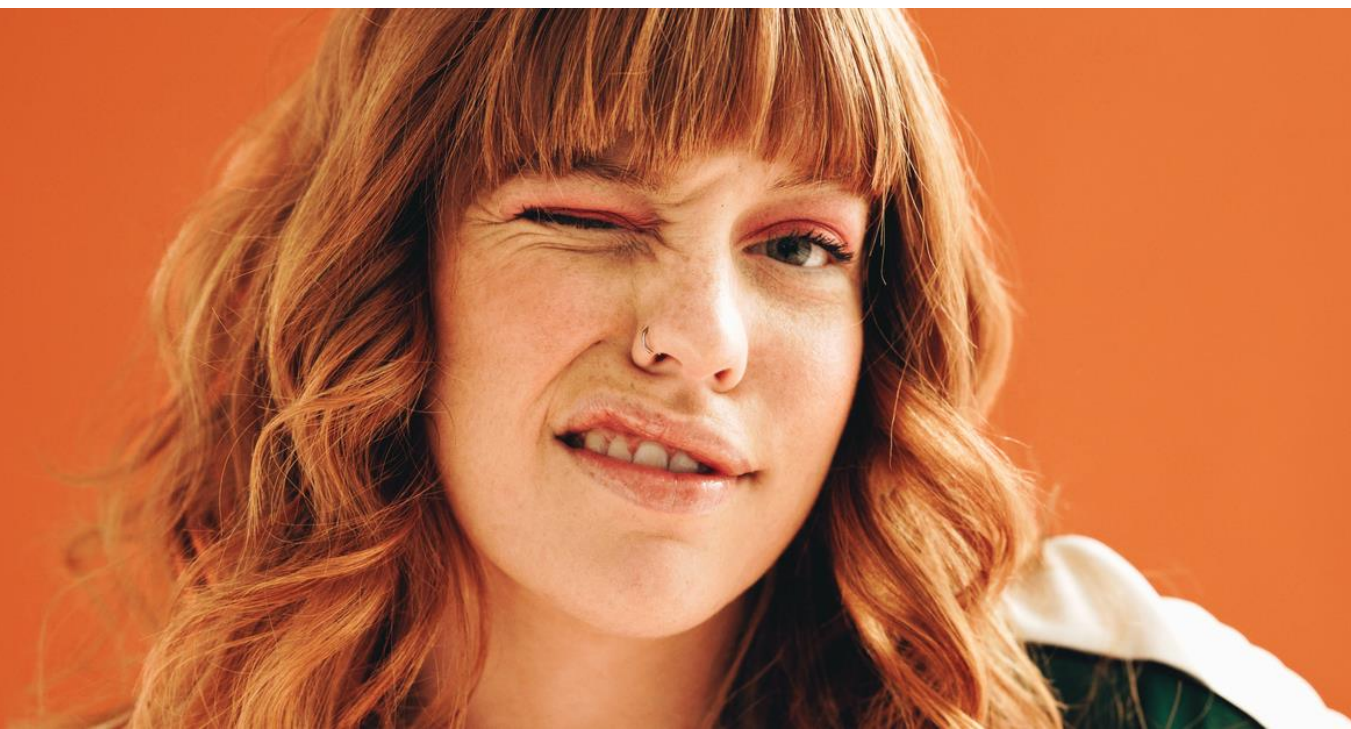
- **Processes:** Intended for **semi-automated workflows** including approval steps
- **Automations:** Intended for **fully automated task execution**
- Intended for application management organizations



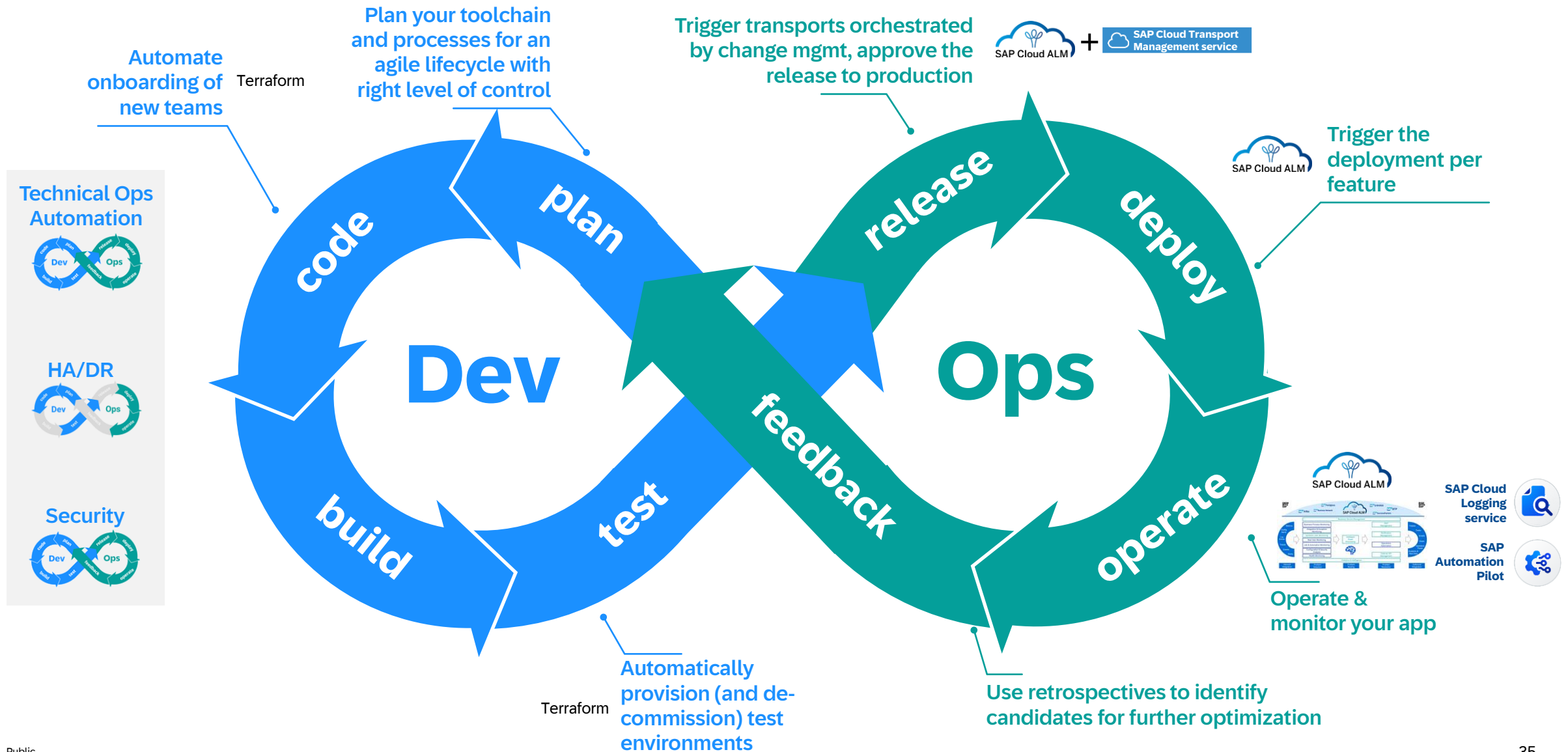
**Apr-03:**

**SAP BTP Ops Automation with SAP Cloud ALM**

# Summary



# Our webcast topics along the lifecycle



# Mastering Day 2 Operations in SAP BTP



- Feb-25: [SAP Cloud ALM](#) for SAP BTP
- Mar-11: [Terraform](#) provider for SAP BTP – Real world setup scenario
- Mar-20: Survive brownfield Terraform projects with Terraform Exporter for SAP BTP
- Mar-27: Observe your SAP BTP apps at depth via [SAP Cloud Logging](#)
- Apr-03: SAP BTP [Ops Automation](#) with SAP Cloud ALM
- Apr-10: Exploring SAP Automation Pilot: Kickstart your ops automation
- Apr-15: Enhanced remediation actions for your SAP HANA Cloud with SAP Automation Pilot
- Apr-23: Inspiring technical ops automations with SAP Automation Pilot
- Jun-12: SAP BTP [HA/DR](#): Overview and Roadmap
- Jun-17: Best practices to enable [Identify and Access Management](#)
- Jun-26: Secure configuration for your SAP BTP services: An overview of [SAP Security Recommendations](#)



# Thank you.

Contact information:

Boris Zarske

[boris.zarske@sap.com](mailto:boris.zarske@sap.com) | LinkedIn

 **Bring out your best.**

Follow us



[www.sap.com/contactsap](http://www.sap.com/contactsap)

© 2025 SAP SE or an SAP affiliate company. All rights reserved.

No part of this publication may be reproduced or transmitted in any form or for any purpose without the express permission of SAP SE or an SAP affiliate company.

The information contained herein may be changed without prior notice. Some software products marketed by SAP SE and its distributors contain proprietary software components of other software vendors. National product specifications may vary.

These materials are provided by SAP SE or an SAP affiliate company for informational purposes only, without representation or warranty of any kind, and SAP or its affiliated companies shall not be liable for errors or omissions with respect to the materials. The only warranties for SAP or SAP affiliate company products and services are those that are set forth in the express warranty statements accompanying such products and services, if any. Nothing herein should be construed as constituting an additional warranty.

In particular, SAP SE or its affiliated companies have no obligation to pursue any course of business outlined in this document or any related presentation, or to develop or release any functionality mentioned therein. This document, or any related presentation, and SAP SE's or its affiliated companies' strategy and possible future developments, products, and/or platforms, directions, and functionality are all subject to change and may be changed by SAP SE or its affiliated companies at any time for any reason without notice. The information in this document is not a commitment, promise, or legal obligation to deliver any material, code, or functionality. All forward-looking statements are subject to various risks and uncertainties that could cause actual results to differ materially from expectations. Readers are cautioned not to place undue reliance on these forward-looking statements, and they should not be relied upon in making purchasing decisions.

SAP and other SAP products and services mentioned herein as well as their respective logos are trademarks or registered trademarks of SAP SE (or an SAP affiliate company) in Germany and other countries. All other product and service names mentioned are the trademarks of their respective companies.

See [www.sap.com/trademark](http://www.sap.com/trademark) for additional trademark information and notices.

