

Inside SAP

Data Democratization Strategy Update How SAP Attracts Citizen Users with SAP Datasphere and Collibra

Bastian Finkel, Florian Gattung
Data Product Experience
SAP CPIT, SAP SE
July 3rd, 2025

PUBLIC



Disclaimer

The information in this presentation is confidential and proprietary to SAP and may not be disclosed without the permission of SAP. Except for your obligation to protect confidential information, this presentation is not subject to your license agreement or any other service or subscription agreement with SAP. SAP has no obligation to pursue any course of business outlined in this presentation or any related document, or to develop or release any functionality mentioned therein.

This presentation, or any related document and SAP's strategy and possible future developments, products and or platforms directions and functionality are all subject to change and may be changed by SAP at any time for any reason without notice. The information in this presentation is not a commitment, promise or legal obligation to deliver any material, code or functionality. This presentation is provided without a warranty of any kind, either express or implied, including but not limited to, the implied warranties of merchantability, fitness for a particular purpose, or non-infringement. This presentation is for informational purposes and may not be incorporated into a contract. SAP assumes no responsibility for errors or omissions in this presentation, except if such damages were caused by SAP's intentional or gross negligence.

All forward-looking statements are subject to various risks and uncertainties that could cause actual results to differ materially from expectations. Readers are cautioned not to place undue reliance on these forward-looking statements, which speak only as of their dates, and they should not be relied upon in making purchasing decisions.

Our Vision

AI-powered, data-driven
decision-making by **every
SAP employee**

TECHNOLOGY

Open, Composable, &
Scalable Architecture

PROCESS

Integration in Decision
Process & Business Apps

PEOPLE

Cultural Transformation
& Capability Building

DATA

Trusted, Explorable, and
Easy to Use Data Products



Challenges

Limited reach

Data integration and data modelling are cumbersome





Challenges

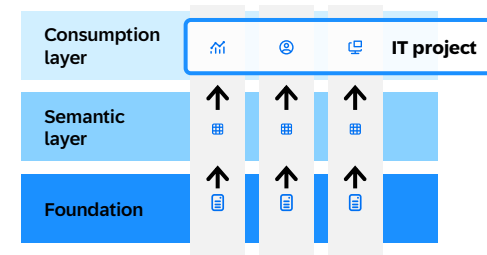
Limited reach

Data integration and data modelling are cumbersome



Time to value

Each new business question is an IT project





Challenges

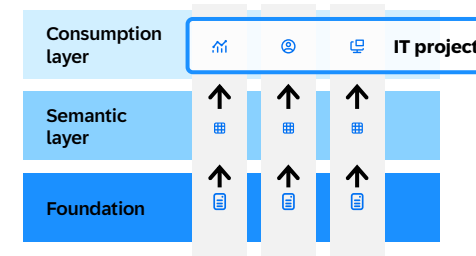
Limited reach

Data integration and data modelling are cumbersome



Time to value

Each new business question is an IT project



Business silos

It's difficult to work with data outside your own domain





Research and Development

Product Experience
Surveys

DevOps Research
and Assessment

Dev. Capacity Team
Assignments

Customer Support
Cases

Product Lifecycle
Management

Product 360

JIRA Issue

Product and
Production Mgt Sys

Idea to
Production

Sales and Marketing

Opportunity

LeadPlatform
Reporting

Engagement
Programs

GtM Territory from
integrated planning

Sales Pipeline

Service
Quotation

Leads from C4C

Audience Insight
Model

Customer
Journey

Corporate Functions

Growth
Portfolio

Profit Center

Skill Gap
Closure

Company

Standard Proficiency
Level

Training Provider A

Pr

Workforce
Capability

Workforce Skill
Data



Consumer
oriented



Well placed



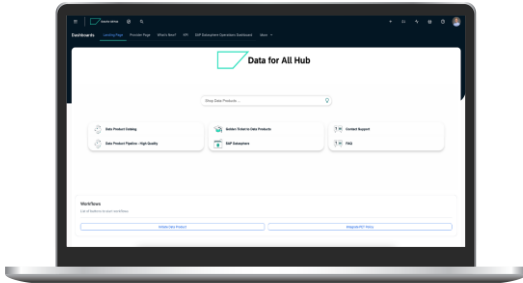
Easy to
consume

The complete data product solution set for anyone at SAP

Find, Shop, Initiate

Data for All Hub

Data Product Catalog & Marketplace for all SAP and non-SAP Data Products



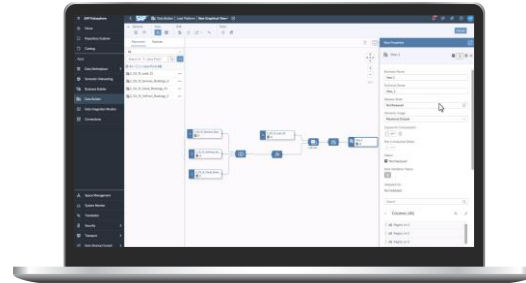
Actions to be done

- Explore and find existing Data Products
- Shop Data Products for consumption & re-use
- Initiate new Data Products
- Govern Data Products that you own
- Publish Data Products for others to find and use

Integrate & Model - Simple

SAP Datasphere

Semantic layer for re-usable Data Products & low-/no-code modelling



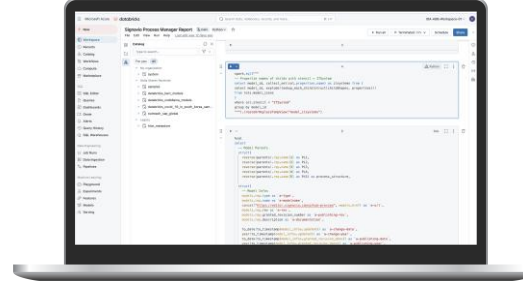
Actions to be done

- Integrate data from a source system
- Data Engineering
 - Model target Views
 - Create Analytic Models

Integrate & Model - Pro

SAP Databricks

Pro Code Data Engineering & ML/AI platform on top of Data Products



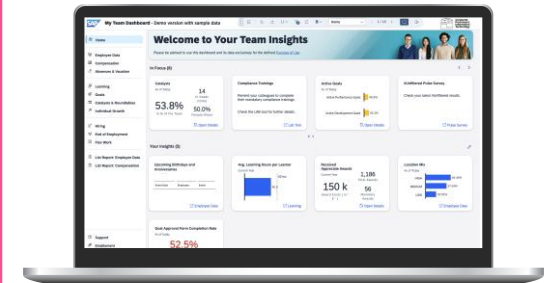
Actions to be done

- Integrate non-SAP Sources
- Run pro code data engineering workloads with custom libraries
- Add AI/ML pipelines to your data product

Consume & Visualize

SAP Analytics Cloud

Create dashboards & analyze data products



Actions to be done

- Analyze data with the Data Analyzer
- Create Dashboards with SAC Stories
- Report on data
- Share Dashboards with an audience



Collibra and BDC at SAP

Collibra within SAP is:

- main home for the data product consumer
- central place for workflows (create, request, ticket, comment, etc.)
- central place for governance
- Collibra as technology “agnostic” layer



SAP Business Data Cloud is:

- main place to model data products
 - main place to consume/ provision
- main technology to expose data products (Facts, Analytic Model, JDBC, API)

Other (non-SAP) technologies to model and store data products (e.g. Azure data lake storage, SAP BTP,..)

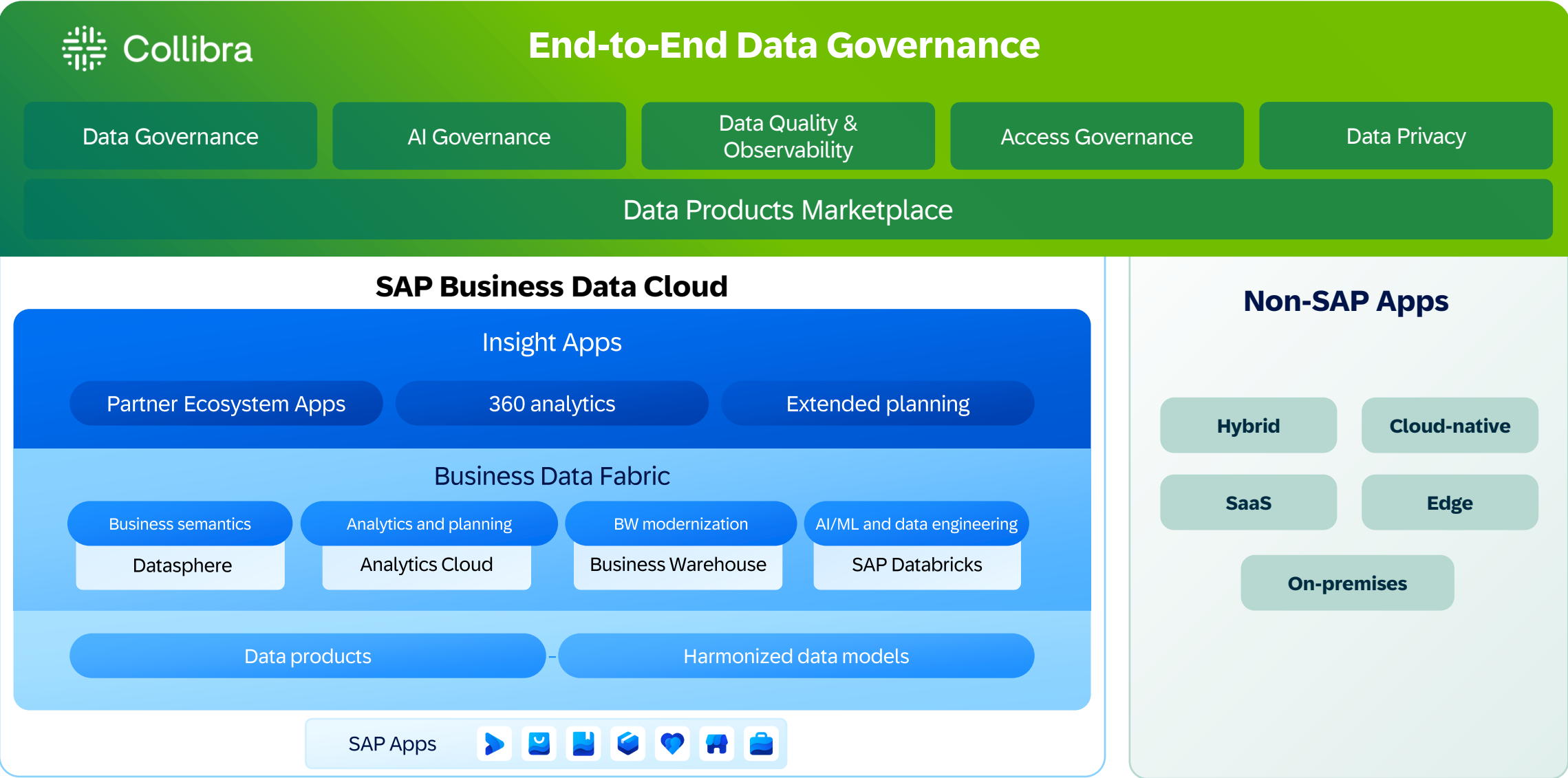
Openness of Collibra & Datasphere used to sync metadata and processes via APIs and custom middleware.

Strategic Partnership Announced at SAP Data Unleashed 2023

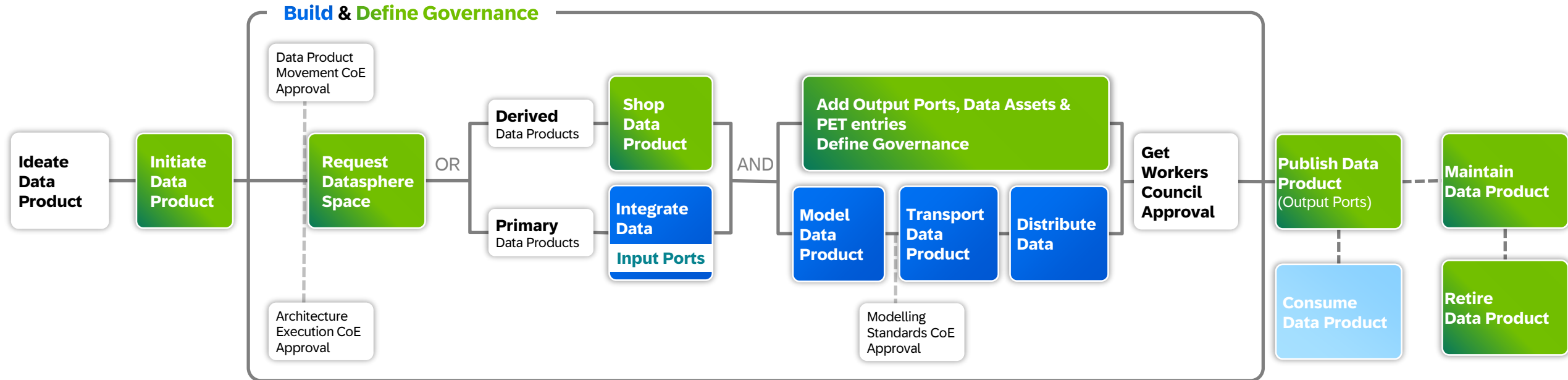
Partnership Extended for AI Governance at SAP Data Unleashed 2024

New Data Quality & Observability Offer for SAP BDC Customers 2025

Collibra and SAP Business Data Cloud

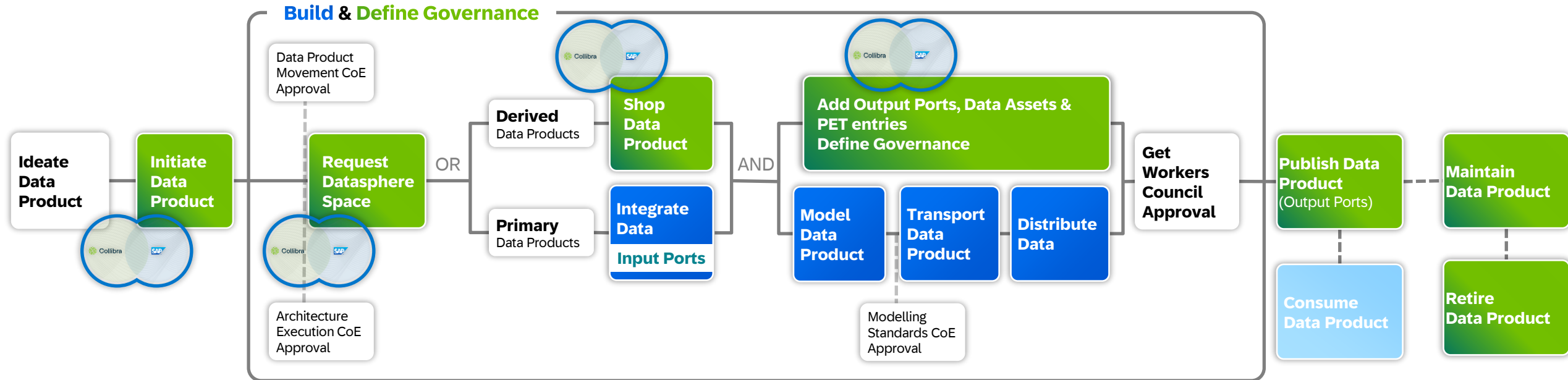


Interaction Collibra & BDC



Collibra SAP Datasphere SAP Analytics Cloud

Interaction Collibra & BDC



Collibra SAP Datasphere SAP Analytics Cloud

Interaction Collibra & SAP



SAP LeanIX & Collibra

Integration for E2E Application Governance

Initiate Data Product

Create a first version of the Data Product in the Data for All Hub and specify the Data Product's attributes

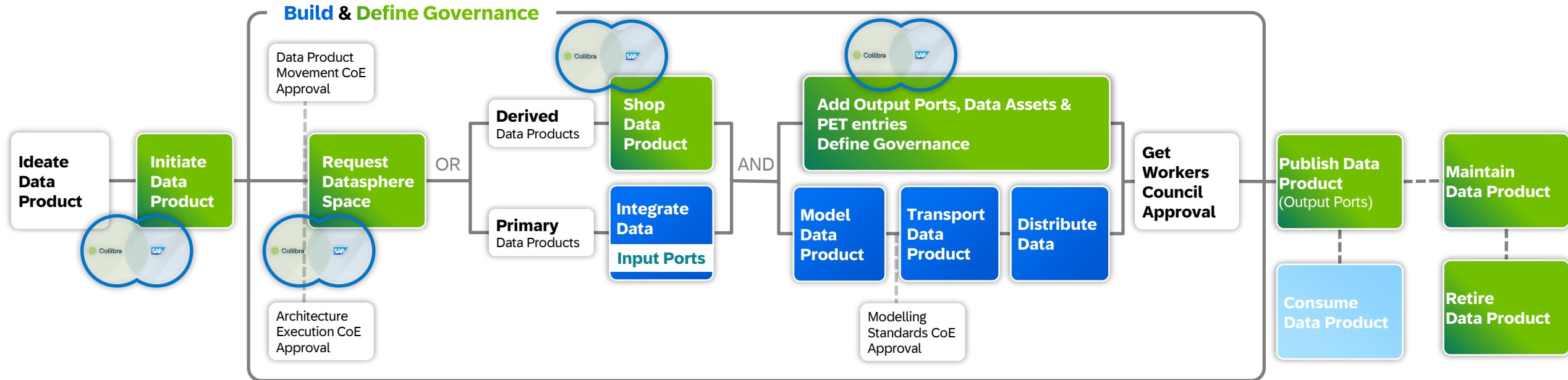
Plan Input Port

Link SAP Applications (systems) maintained in LeanIX to your Data Product as Input Port

- Data Products organized by domain according to business capabilities
- Input Ports synchronized with Lean XI Applications

The image displays two screenshots from the SAP Data for All Hub interface. The top screenshot shows the 'Initiate Data Product' dialog box, which includes a 'New' button, a 'Step 2/3' indicator, and a dropdown menu for 'Data Sub-Domain (Business Capability L2)'. The bottom screenshot shows the 'Plan Input Port' screen, which lists various SAP applications (systems) and their associated data products. The interface includes a search bar, filters, and a table of results.

Interaction Collibra & BDC



Collibra SAP Datasphere SAP Analytics Cloud

Interaction Colibra & BDC



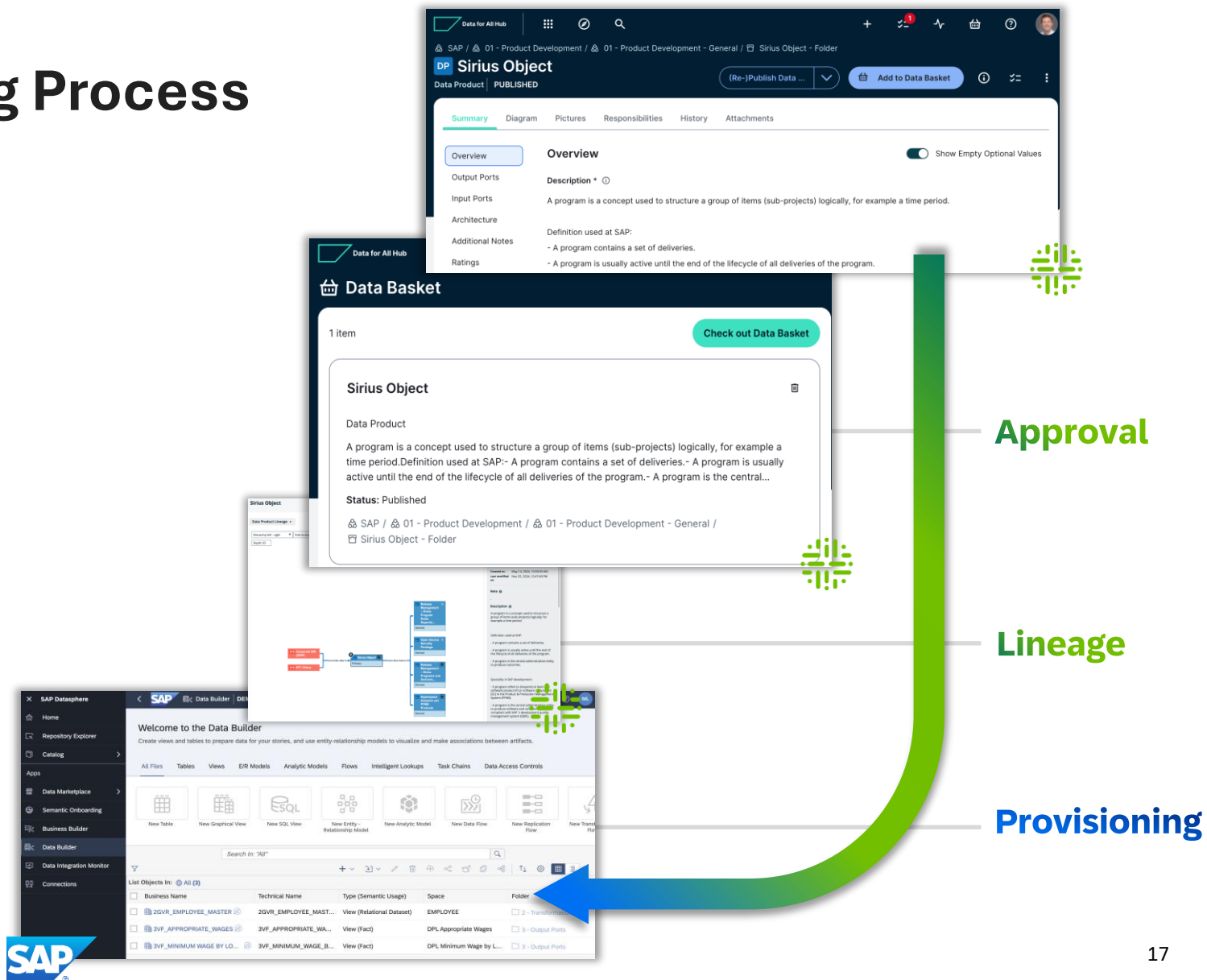
Integrated Shopping Process

Check Out Data Basket

Check out the data products you want to shop, and the selected output ports will be shared directly into your SAP Datasphere space via space sharing after DPO approval.

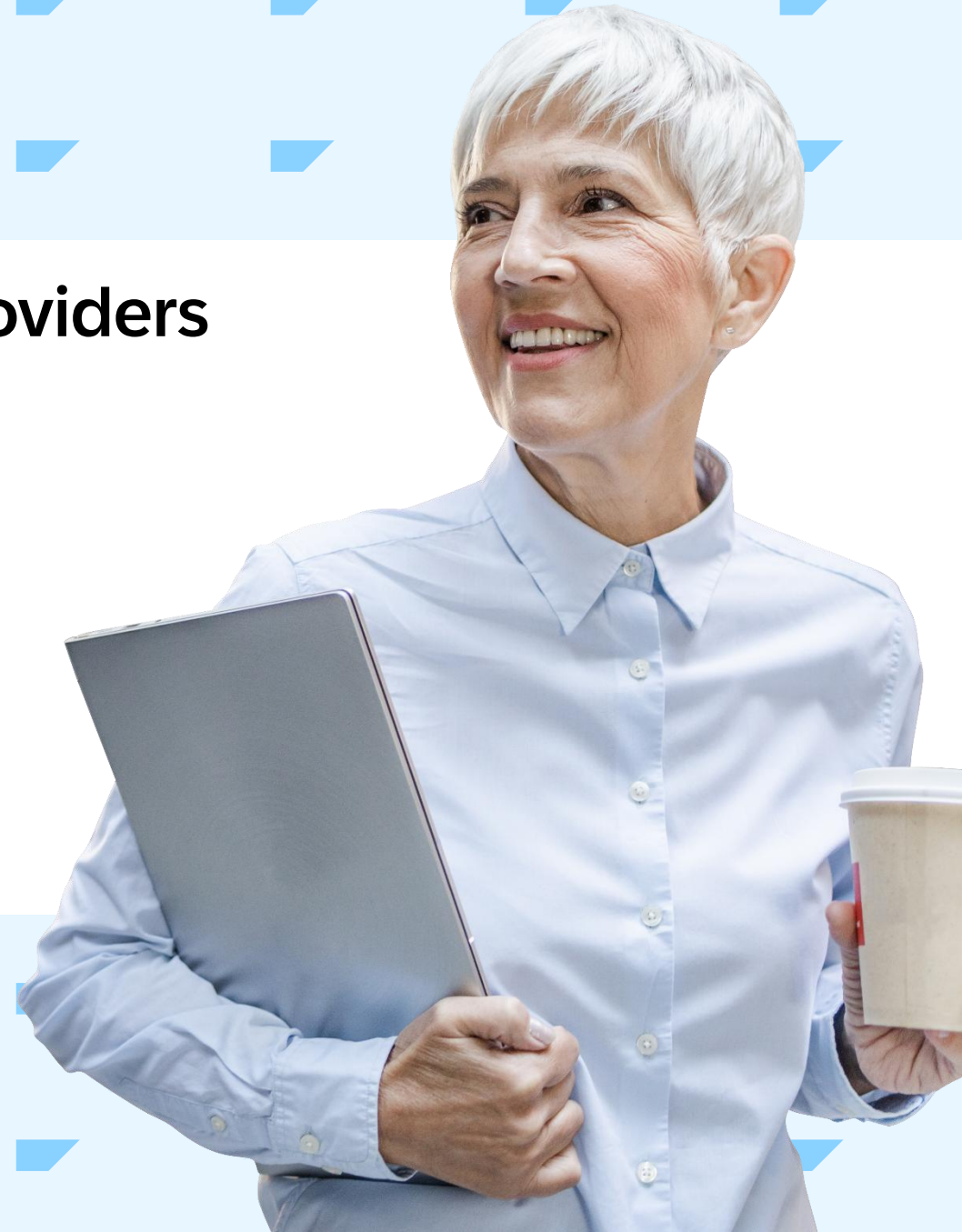
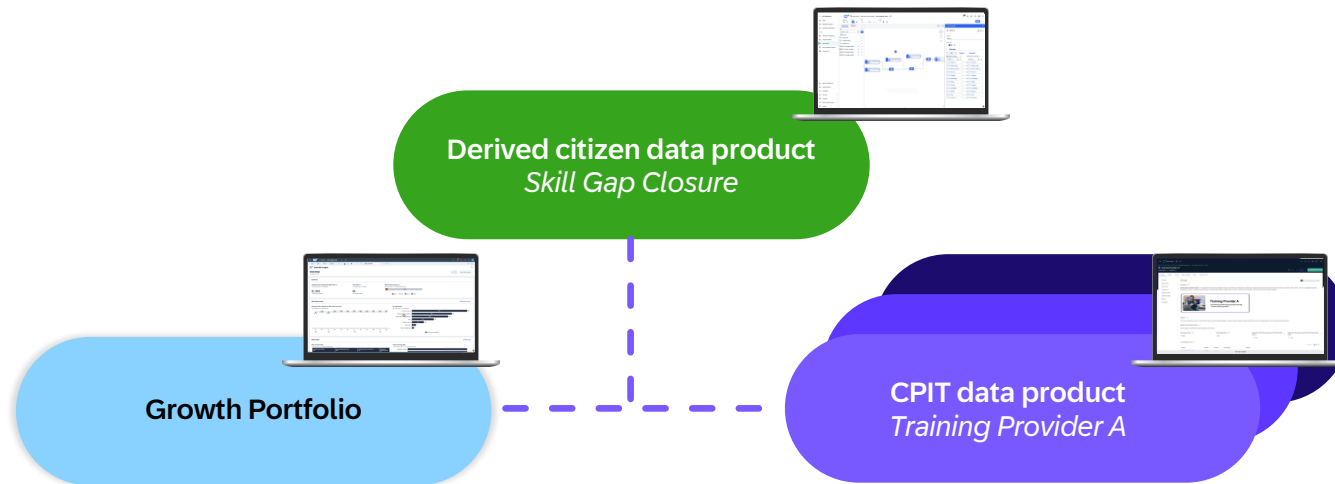
This is made possible via an **SAP BTP Application** that retrieves the relevant data product information from Colibra to then execute the data-sharing actions in SAP Datasphere.

Creating Data Product Lineage in Colibra automatically.



Close skill gaps with external training providers

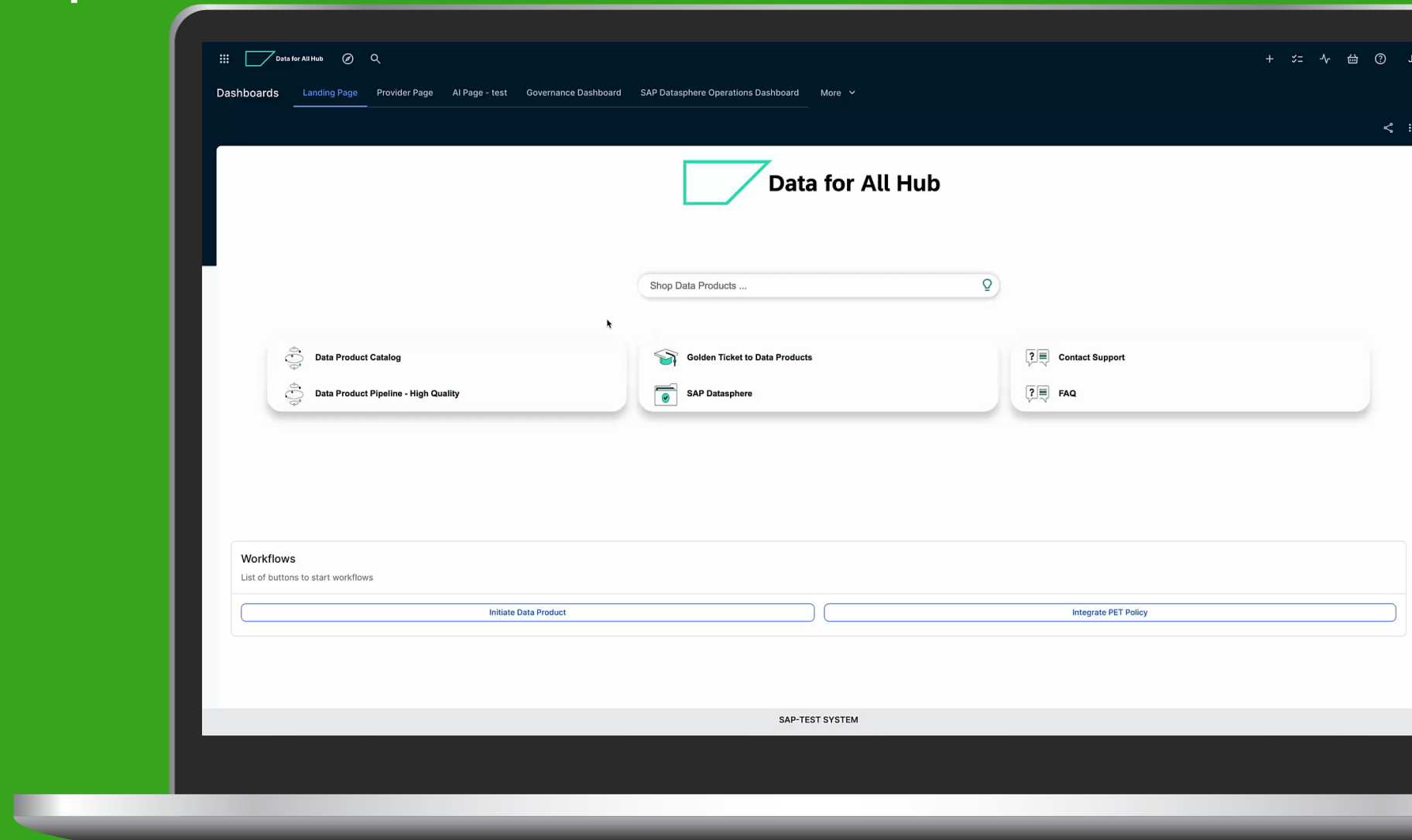
Debbie wants to make data-driven decisions on training offers



Derived citizen data product

Skill Gap Closure

Shop in Collibra

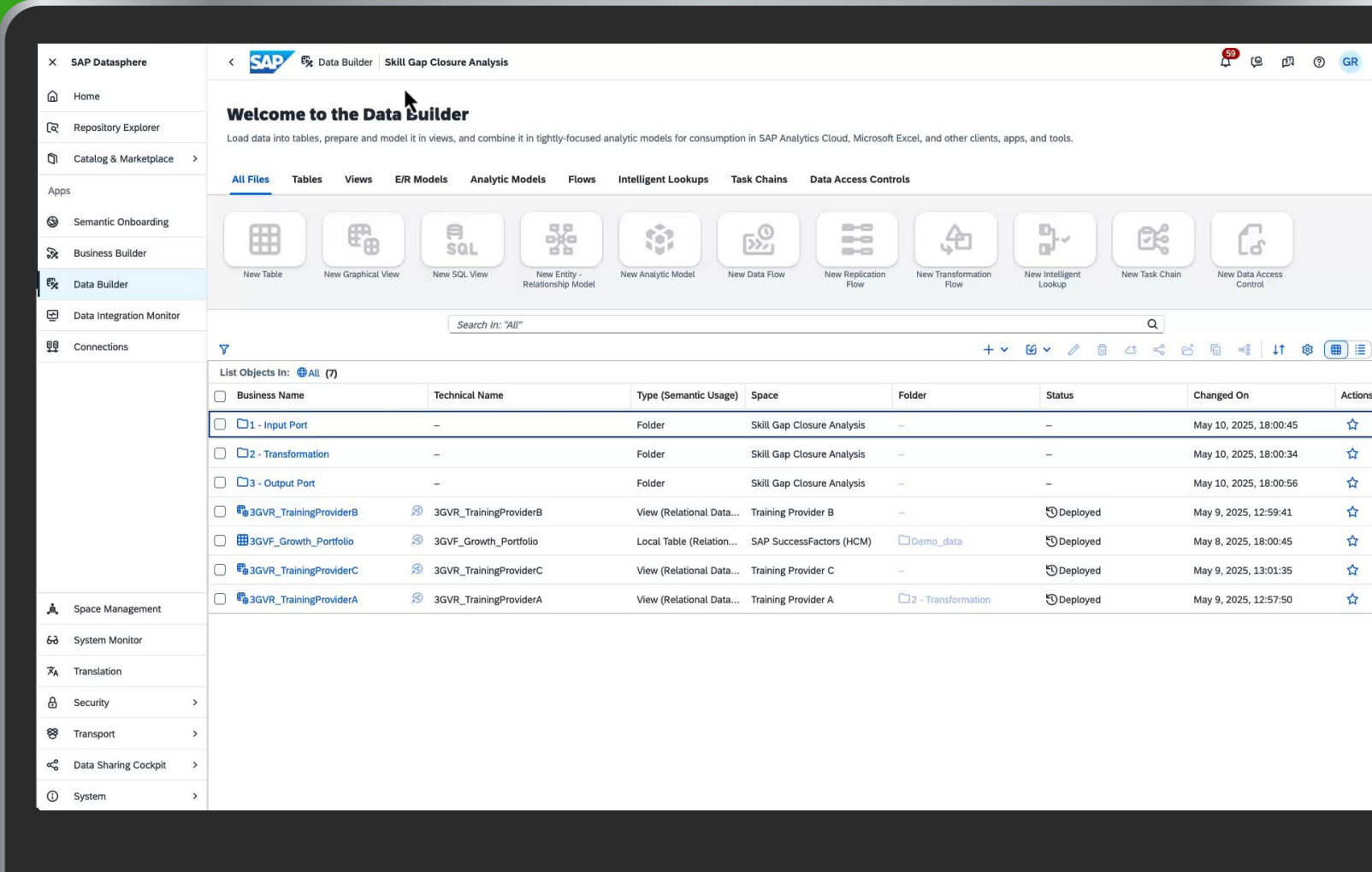


Derived citizen data product

Skill Gap Closure

Shop in Collibra

Model in
SAP Datasphere

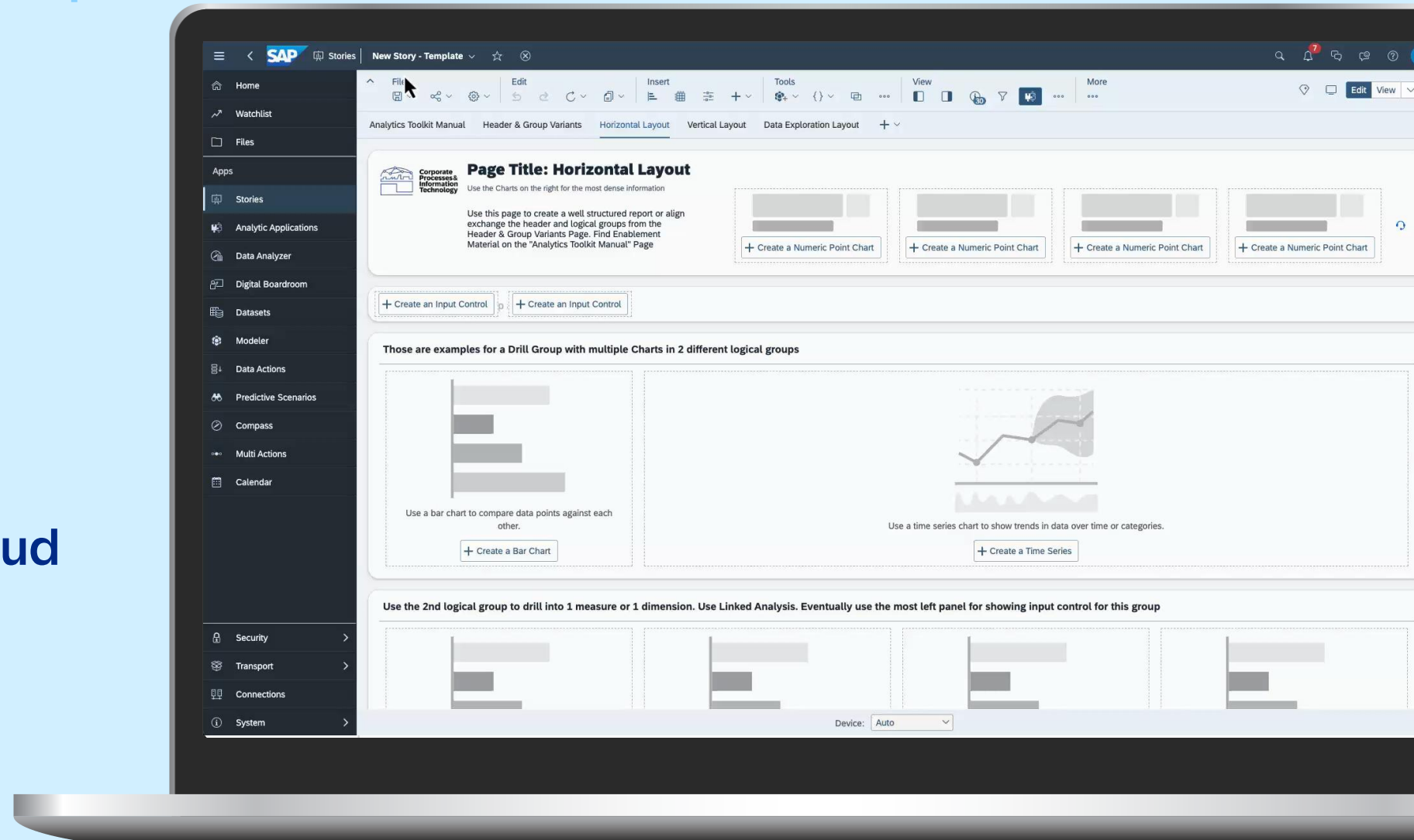


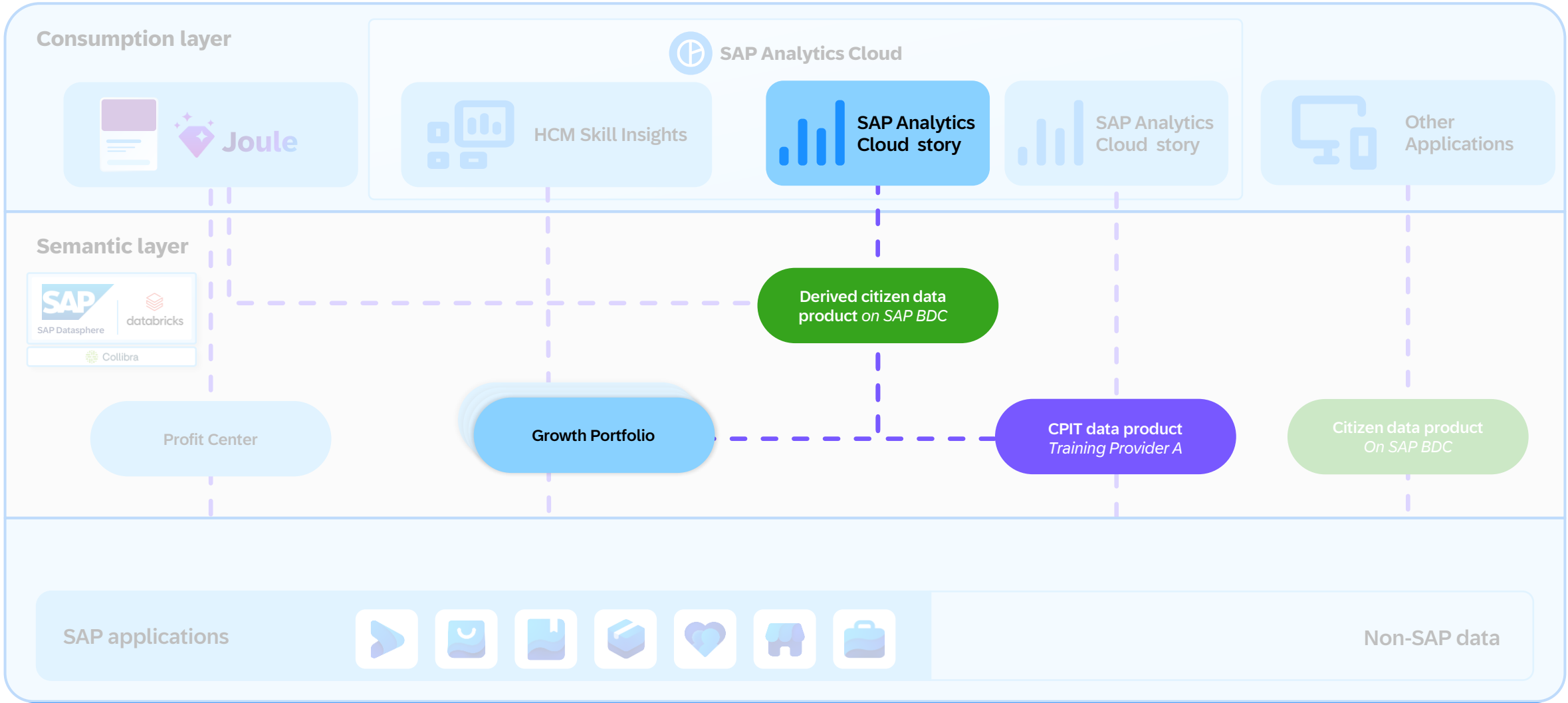
Derived citizen data product
Skill Gap Closure

Shop in Collibra

Model in
SAP Datasphere

Report in
SAP Analytics Cloud







Challenges

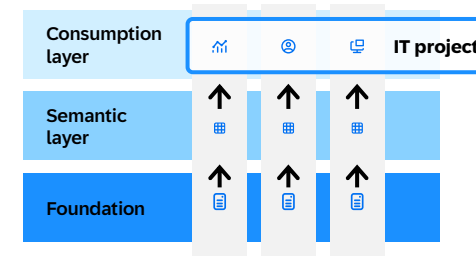
Limited reach

Data integration and data modelling are cumbersome



Time to value

Each new business question is an IT project



Business silos

It's difficult to work with data outside your own domain





Better

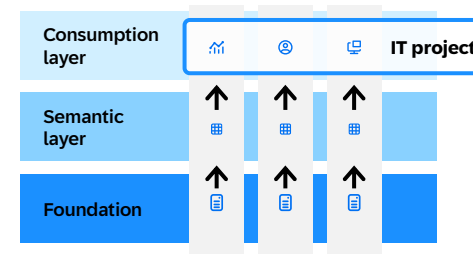
Data-driven decisions

Preconfigured data products for direct consumption and re-use

SAP BDC data product

Time to value

Each new business question is an IT project



Business silos

It's difficult to work with data outside your own domain





Better

Data-driven decisions

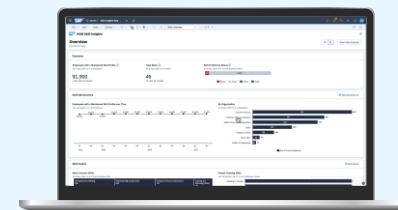
Preconfigured data products for direct consumption and re-use

SAP BDC data product

Faster

Time to value

Shorter time from analytical question to data-driven answer



Business silos

It's difficult to work with data outside your own domain





Better

Data-driven decisions

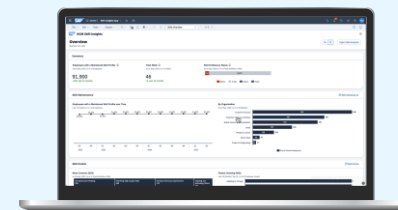
Preconfigured data products for direct consumption and re-use

SAP BDC data product

Faster

Time to value

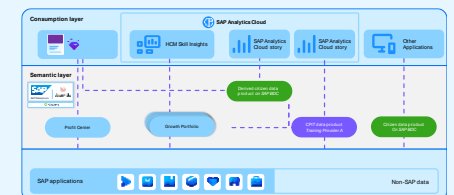
Shorter time from analytical question to data-driven answer



Stronger

Alignment of SAP and non-SAP data

Cross-domain use cases





Better

Data-driven decisions

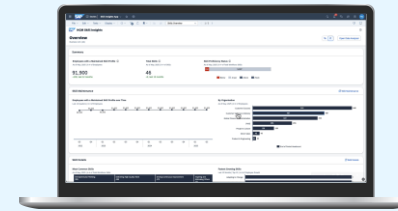
Preconfigured data products for direct consumption and re-use

SAP BDC data product

Faster

Time to value

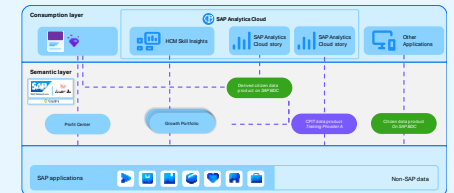
Shorter time from analytical question to data-driven answer



Stronger

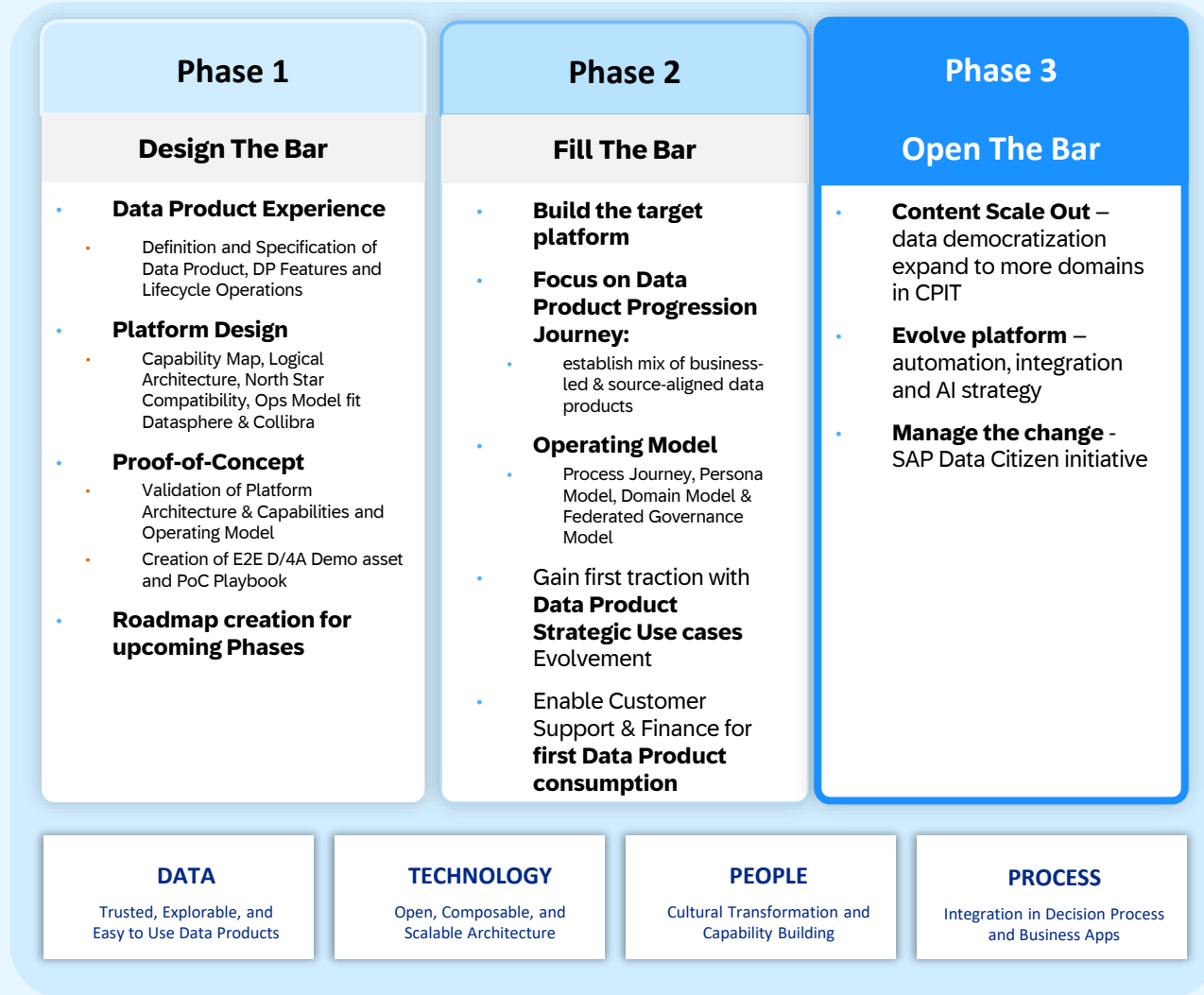
Alignment of SAP and non-SAP data

Cross-domain use cases



Joule Agents

Ready for Scale Out



1480

monthly visitors on our Golden Ticket to Data Products site

690

people accessed Data for All Hub last month

429

Data Products published on any technology

130

Data Products with published Datasphere Output Port

50

Mentored Data Products built by data citizen users

Thank you

Bastian Finkel

Head of Data Product Experience Team
Bastian.finkel@sap.com
linkedin.com/in/bastianfinkel/



Florian Gattung

Product Owner Data Product Experience
florian.gattung@sap.com
linkedin.com/in/florian-gattung-a3968666





Human Insights and AI
Innovation with SAP
Business Data Cloud



Advancing Sales
Transformation
at SAP



Attracting Citizen Users
with SAP Datasphere
and Collibra



Agentic AI
Revolutionizes Support



Running on
RISE with SAP



SAP Signavio
Process Mining
for Process Efficiency



End-to-end Planning
with SAP Analytics Cloud



Transforming
End-to-end Processes
with SAP Business AI



Data and AI engineering:
SAP Business Data Cloud and
SAP Databricks



Scan the QR code to
register for the series

Follow us



www.sap.com/contactsap

© 2025 SAP SE or an SAP affiliate company. All rights reserved.

No part of this publication may be reproduced or transmitted in any form or for any purpose without the express permission of SAP SE or an SAP affiliate company.

The information contained herein may be changed without prior notice. Some software products marketed by SAP SE and its distributors contain proprietary software components of other software vendors. National product specifications may vary.

These materials are provided by SAP SE or an SAP affiliate company for informational purposes only, without representation or warranty of any kind, and SAP or its affiliated companies shall not be liable for errors or omissions with respect to the materials. The only warranties for SAP or SAP affiliate company products and services are those that are set forth in the express warranty statements accompanying such products and services, if any. Nothing herein should be construed as constituting an additional warranty.

In particular, SAP SE or its affiliated companies have no obligation to pursue any course of business outlined in this document or any related presentation, or to develop or release any functionality mentioned therein. This document, or any related presentation, and SAP SE's or its affiliated companies' strategy and possible future developments, products, and/or platforms, directions, and functionality are all subject to change and may be changed by SAP SE or its affiliated companies at any time for any reason without notice. The information in this document is not a commitment, promise, or legal obligation to deliver any material, code, or functionality. All forward-looking statements are subject to various risks and uncertainties that could cause actual results to differ materially from expectations. Readers are cautioned not to place undue reliance on these forward-looking statements, and they should not be relied upon in making purchasing decisions.

SAP and other SAP products and services mentioned herein as well as their respective logos are trademarks or registered trademarks of SAP SE (or an SAP affiliate company) in Germany and other countries. All other product and service names mentioned are the trademarks of their respective companies.

See www.sap.com/trademark for additional trademark information and notices.