

# Transforming End-to-End Processes with AI

Majeed Malik, Enterprise AI Product & Partner Management

# Disclaimer

The information in this presentation is confidential and proprietary to SAP and may not be disclosed without the permission of SAP. Except for your obligation to protect confidential information, this presentation is not subject to your license agreement or any other service or subscription agreement with SAP. SAP has no obligation to pursue any course of business outlined in this presentation or any related document, or to develop or release any functionality mentioned therein.

This presentation, or any related document and SAP's strategy and possible future developments, products and or platforms directions and functionality are all subject to change and may be changed by SAP at any time for any reason without notice. The information in this presentation is not a commitment, promise or legal obligation to deliver any material, code or functionality. This presentation is provided without a warranty of any kind, either express or implied, including but not limited to, the implied warranties of merchantability, fitness for a particular purpose, or non-infringement. This presentation is for informational purposes and may not be incorporated into a contract. SAP assumes no responsibility for errors or omissions in this presentation, except if such damages were caused by SAP's intentional or gross negligence.

All forward-looking statements are subject to various risks and uncertainties that could cause actual results to differ materially from expectations. Readers are cautioned not to place undue reliance on these forward-looking statements, which speak only as of their dates, and they should not be relied upon in making purchasing decisions.

# A new Era of Enterprise Excellence @ SAP

## Strong AI moments

**Tripple digit m€**

Potential value  
in pipeline

**Customer Zero**

for all relevant SAP  
Business AI Solutions

**>180**

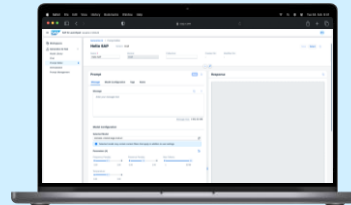
Internal AI use cases  
live at SAP

**Whitepaper - Improve DevOps and  
platform experiences to boost value  
A case study by Corporate Processes  
& IT at SAP**



## Our Generative AI Offerings

**Generative AI  
Platform**



**55+  
million  
Prompts**

**48+**

LLMs available for  
experimentation

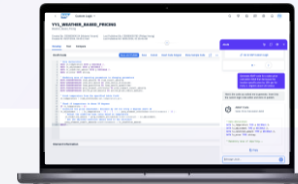
**100+**

Generative AI  
extensions

## Joule

**for developers**

Rolled out to **6,000  
developers** within  
SAP



**for all employees**

Rolled out to **+100k  
employees** within  
SAP

## AI is a hot topic in every event

SAP Sapphire

SAP TechEd

Rise with  
SAP Event

SAP  
CX Live

SAP Spend Connect

## Technology Stack

Databricks

S4/HANA Data Lake

AI Core

SAP runs SAP

MSFT Azure

AI Launchpad

# SAP's Journey towards **Business AI at SAP**

## **Experiment, Learn and Repeat**

Form frontrunner teams (from IT and Business) to explore opportunities, build pilots and develop expertise

## **Deliver real business value**

Set first AI use cases live into selected business process steps

Example: Extracting data from Invoices with AI

## **Setup an SAP-wide AI Program**

Establish AI at SAP as a top-management priority and setup a company wide program – with clear governance, value management and steering

## **Today: Transform Business Processes**

Consolidate individual AI use cases and shift towards compound AI systems

Example: Ask Procurement

Before 2015

2023

2026+

# SAP's Journey towards **Business AI at SAP**

## **Experiment, Learn and Repeat**

Form frontrunner teams (from IT and Business) to explore opportunities, build pilots and develop expertise

## **Deliver real business value**

Set first AI use cases live into selected business process steps

Example: Extracting data from Invoices with AI

## **Setup an SAP-wide AI Program**

Establish AI at SAP as a top-management priority and setup a company wide program – with clear governance, value management and steering

## **Today: Transform Business Processes**

Consolidate individual AI use cases and shift towards compound AI systems

Example: Ask Procurement

## **Tomorrow: Agentic Enterprise**

Agentic Workflows covering entire business processes

Example: Transforming our customer support process with AI Agents

Before 2015

2023

2026+

# SAP's Journey towards **Business AI at SAP**

## **Experiment, Learn and Repeat**

Form frontrunner teams (from IT and Business) to explore opportunities, build pilots and develop expertise

## **Deliver real business value**

Set first AI use cases live into selected business process steps

Example: Extracting data from Invoices with AI

## **Setup an SAP-wide AI Program**

Establish AI at SAP as a top-management priority and setup a company wide program – with clear governance, value management and steering

## **Today: Transform Business Processes**

Consolidate individual AI use cases and shift towards compound AI systems

Example: Ask Procurement

## **Tomorrow: Agentic Enterprise**

Agentic Workflows covering entire business processes

Example: Transforming our customer support process with AI Agents

Before 2015

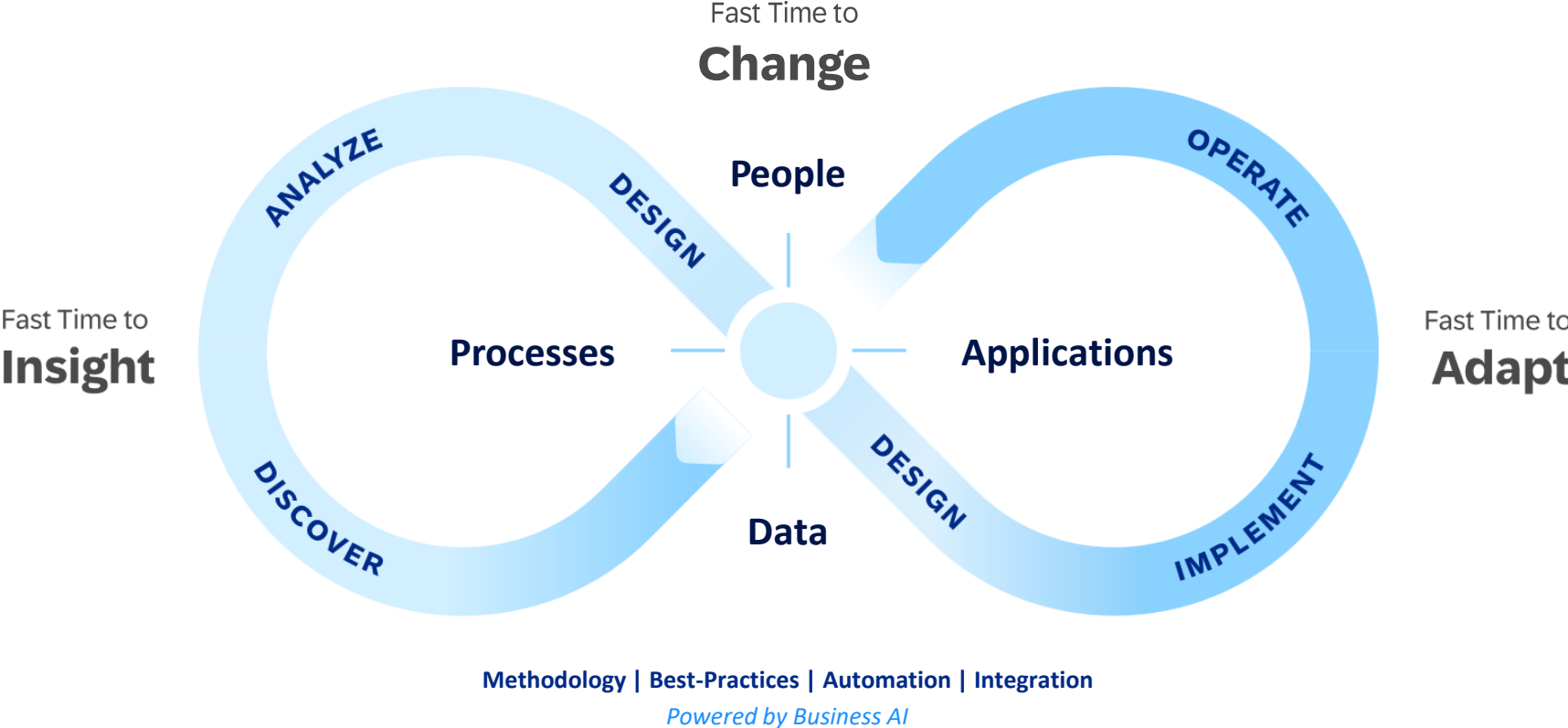
2023

2026+

*"I know how to scale a timeline, but  
innovation cycles are getting brutally short"*

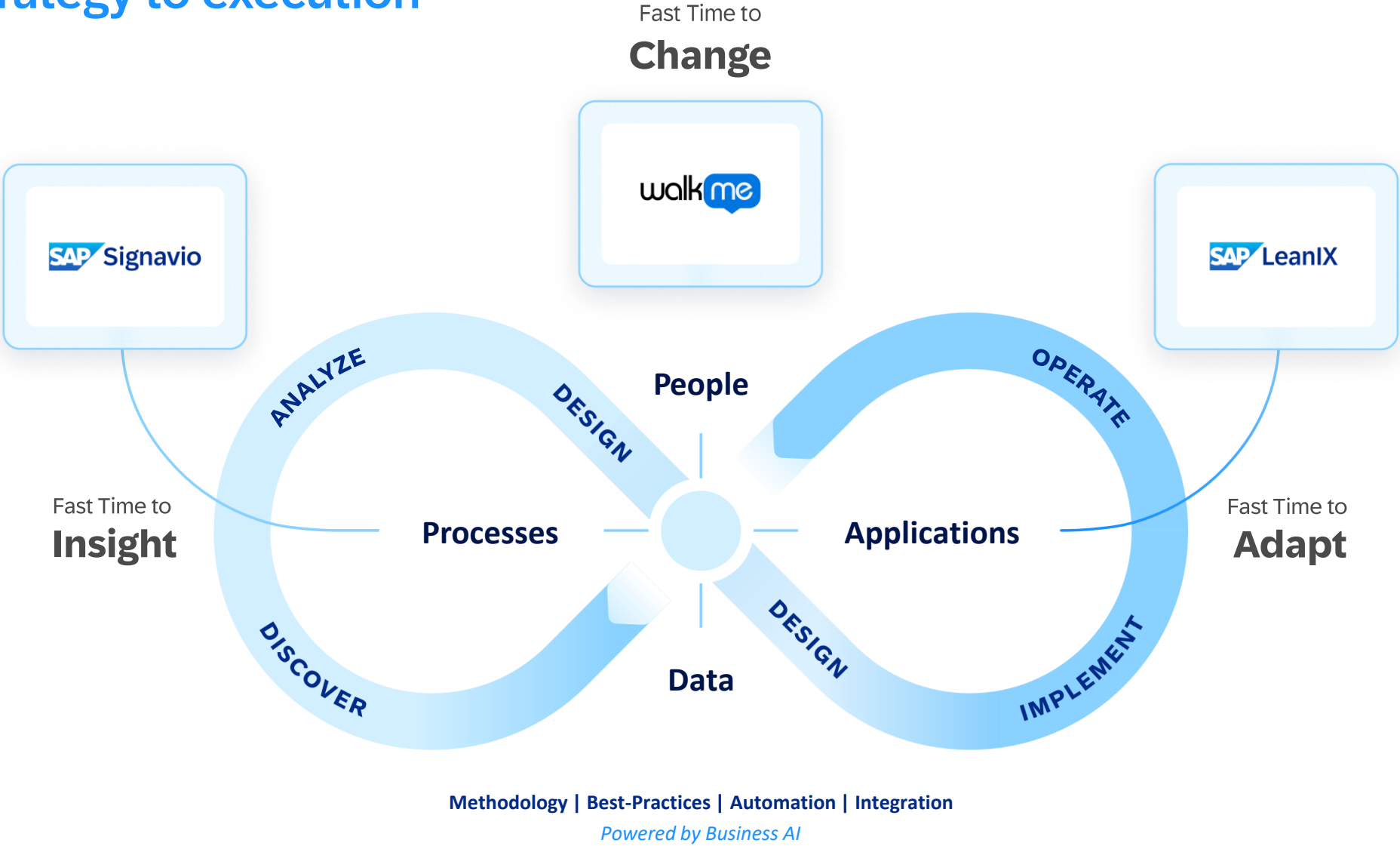
# Business transformation

## From strategy to execution



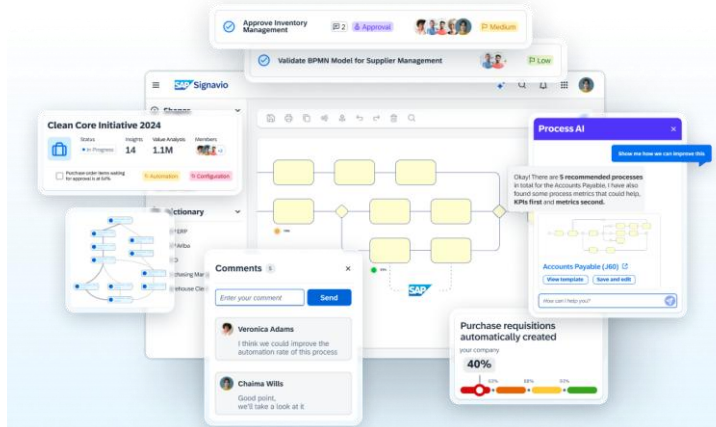
# Business transformation

## From strategy to execution





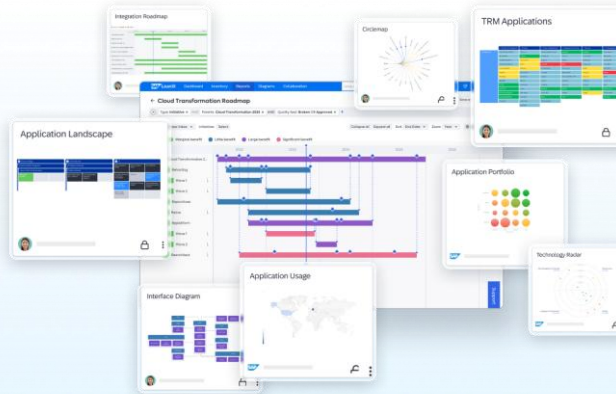
# Business transformation with SAP Signavio, SAP LeanIX and WalkMe



Analyze, optimize, and manage your processes fast and at a scale to become an agile and resilient enterprise.

SAP Signavio

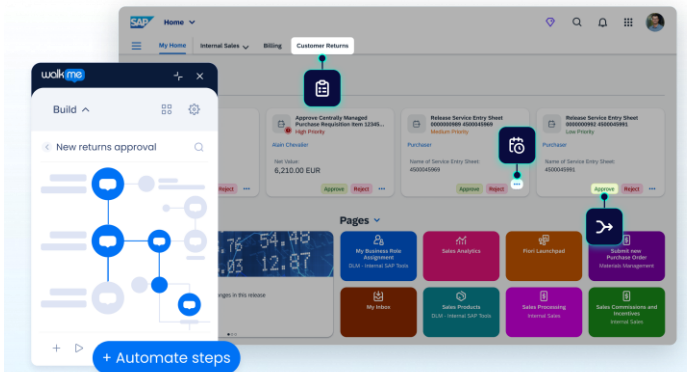
Processes



Visualize and assess the as-is landscape and confidently navigate towards your to-be IT architecture.

SAP LeanIX

Applications



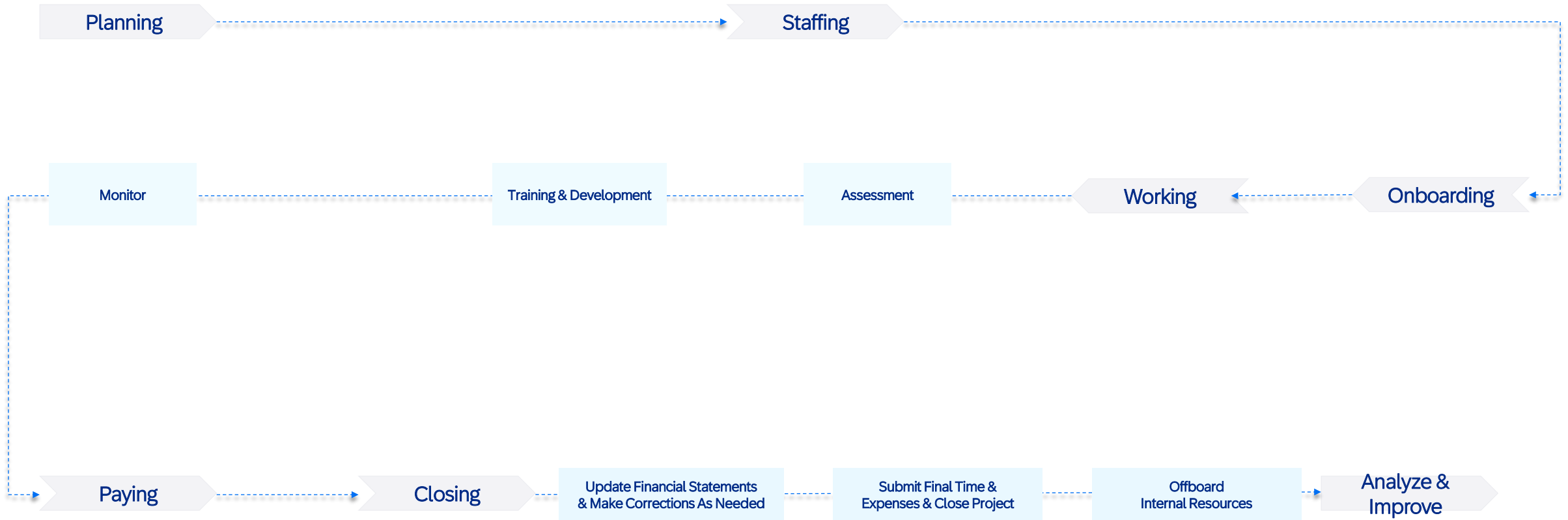
Guide, govern and automate user interactions to drive tech adoption across applications and workflows.

WalkMe

People

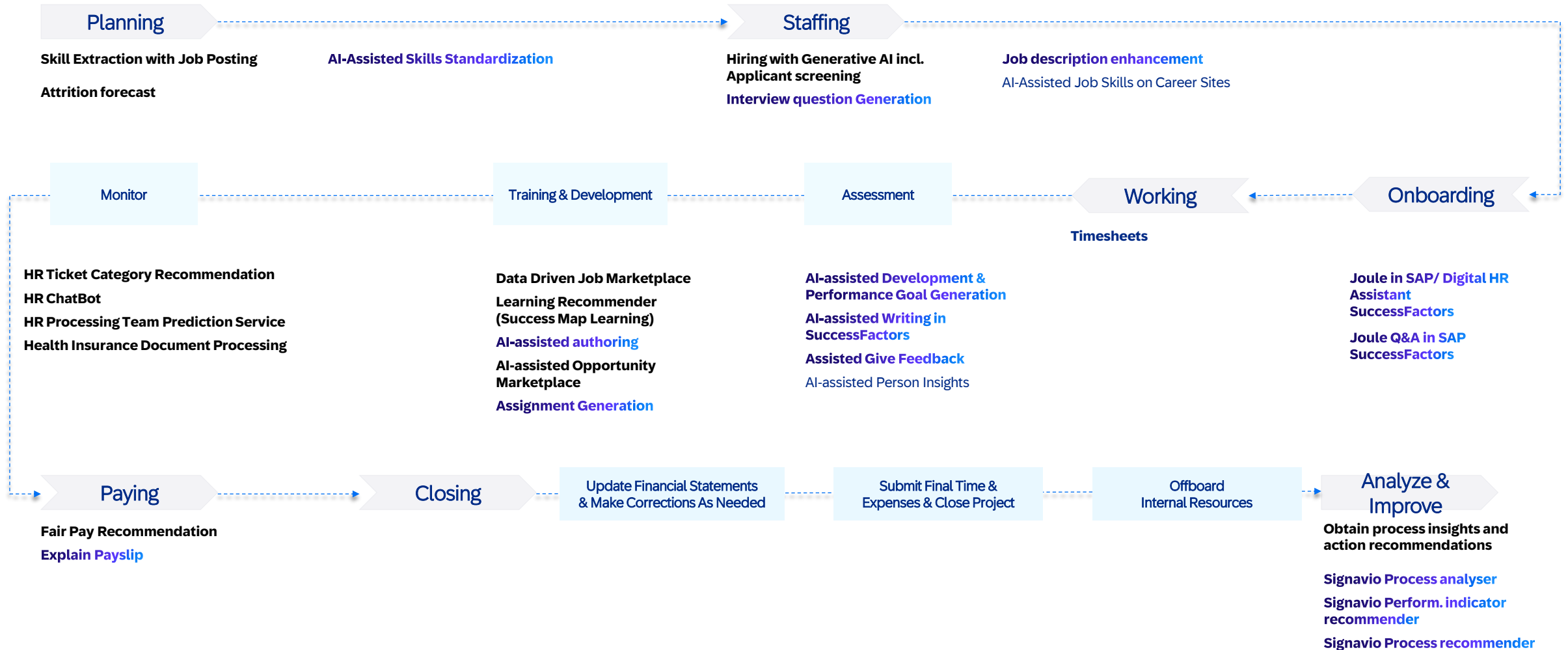
# Recruit To Retire

Take a E2E Businesss Process perspective



# Recruit To Retire

Embed AI along the E2E Business Process



1

Siloed outcomes – no real end-to-end coverage

2

Unclear Return on Investment

3

Manual steps

4

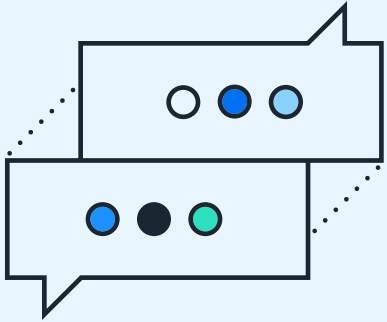
Low user adoption

5

Integration complexity

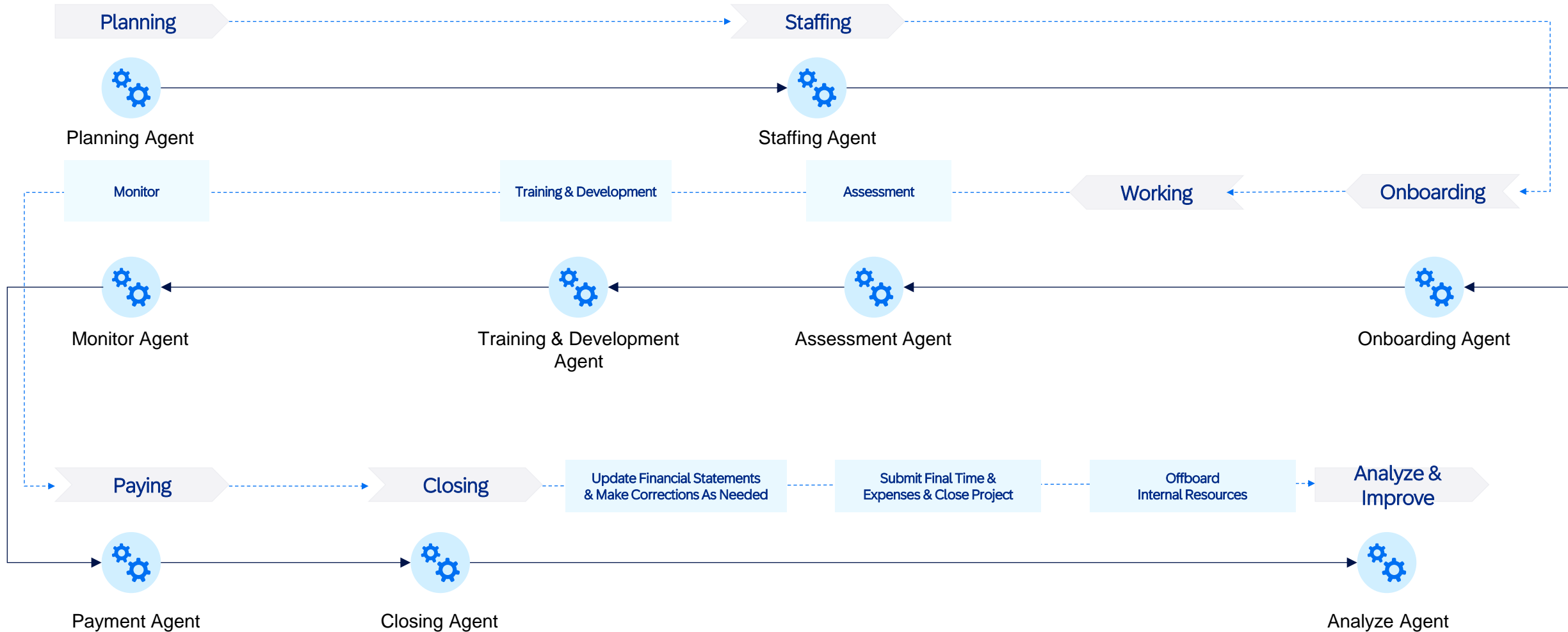
6

Limited scalability



# Recruit To Retire

How might we achieve a fully embedded and connected process coverage to achieve the desired **Business Outcome**?



# Learn how you can interact with Joule

Four interaction patterns

## Informational

Joule

Supplier: Inlandsliedereant DE (10100088)  
Net Value: 3000.00 EUR

**PO: 4500000036**  
Supplier: Inlandsliedereant DE (10100088)  
Net Value: 80.88 EUR

Open

Open in App

View More

What are the key rules for a team outing?

BestRun provides an allowance of 50 € per person for a team outing event organized by managers. The allowance covers travel expenses and hotel coverage if needed for colleagues from other locations. It is recommended to include at least one teambuilding event as part of the agenda. Managers should also inform employees to prefer sustainable travel options in accordance with the travel policy.

Source Document

**BestRun\_Employee\_Policy.docx**  
Source: Company-Specific Document

Message Joule...


## Navigational

Joule

Company: Best Run  
Location: San Francisco, CA  
Department: Product Engineering  
Cost Center: 25ef

You can change something else or send the position for approval. You can also say "cancel" to exit the flow at any time.

Send for Approval



**Position sent for approval**  
Arya Smart is approving your request for Sustainability Supply Chain Consultant. View more in Org Chart.  
[Go to Org Chart](#)

Message Joule...

## Transactional

Joule

Which other position detail would you like to amend? Say "done" when you're ready to move to next step.

Done

Below are the new position details set to be hired starting today.

**Key Position Details**

Position Name	Sustainability Supply Chain Consultant
Job Code	010405
Job Title	Sustainability Supply Chain Consultant
Regular / Temporary	Regular
Company	Best Run
Location	San Francisco, CA
Department	Product Engineering
Cost Center	25ef

Send for approval

Message Joule...


## Analytical

Joule

**SF006 Location Guide**

- Ensure diverse and cross-role/ cross-skills interviewer team
- Do not involve colleagues who are in the probationary period
- Neutral & fact-based feedback/ recommenda...

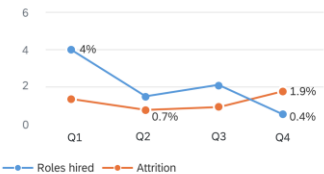
What is the hiring versus attrition trend for this job role in the past 12 months?



**Sustainability Supply Chain Consultant**  
Attrition versus Hiring Rate, Best Run, 2024

124  
Similar Roles Hired

6  
Role Attrition



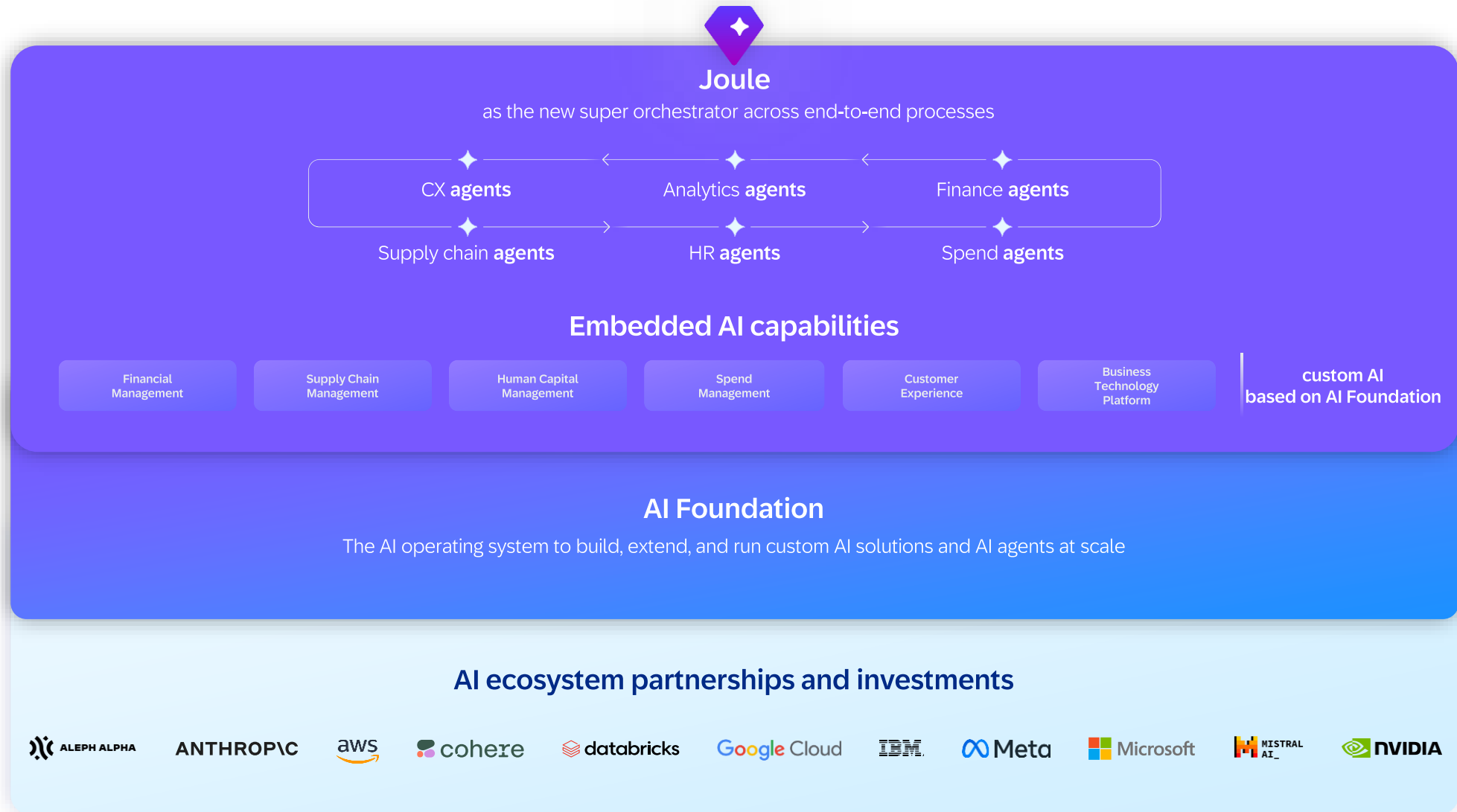
Quarter	Hiring Rate	Attrition Rate
Q1	4%	1.9%
Q2	0.7%	0.4%
Q3	1.9%	1.9%
Q4	0.4%	0.4%

Message Joule...

14



# Infused across the SAP Cloud portfolio



# Continue discovering SAP from the inside

## **How Agentic AI Revolutionizes the Way SAP is Running Support**

23<sup>rd</sup> September 2025

Discover how SAP leverages AI agents to improve support responsiveness. With AI agents, we're striving to equip our engineers with a fleet of intelligent helpers to quickly analyze and resolve customers' support requests.

Dr. Michèle Weynandt, Head of Product Management  
Service Management Processes and Solutions, SAP SE



<https://www.youtube.com/live/-JLjFXvCfGw>



# Towards transforming E2E Business Processes with AI – Key Takeaways

## **1** Process mining for continuous optimization

- Enhance visibility into real process flows and uncover hidden inefficiencies in operations.
- Enable data-driven decision making and prioritize business value over technology.
- Most importantly: Get started and involve decision-maker across the company

## **2** Integration and consolidation is key

- Achieve unified, harmonized business data by reducing silos and consolidating platforms (watch out for the BDC session!).
- Enable seamless connection between embedded SAP Business AI solutions and AI extensions via the SAP Business Technology Platform.

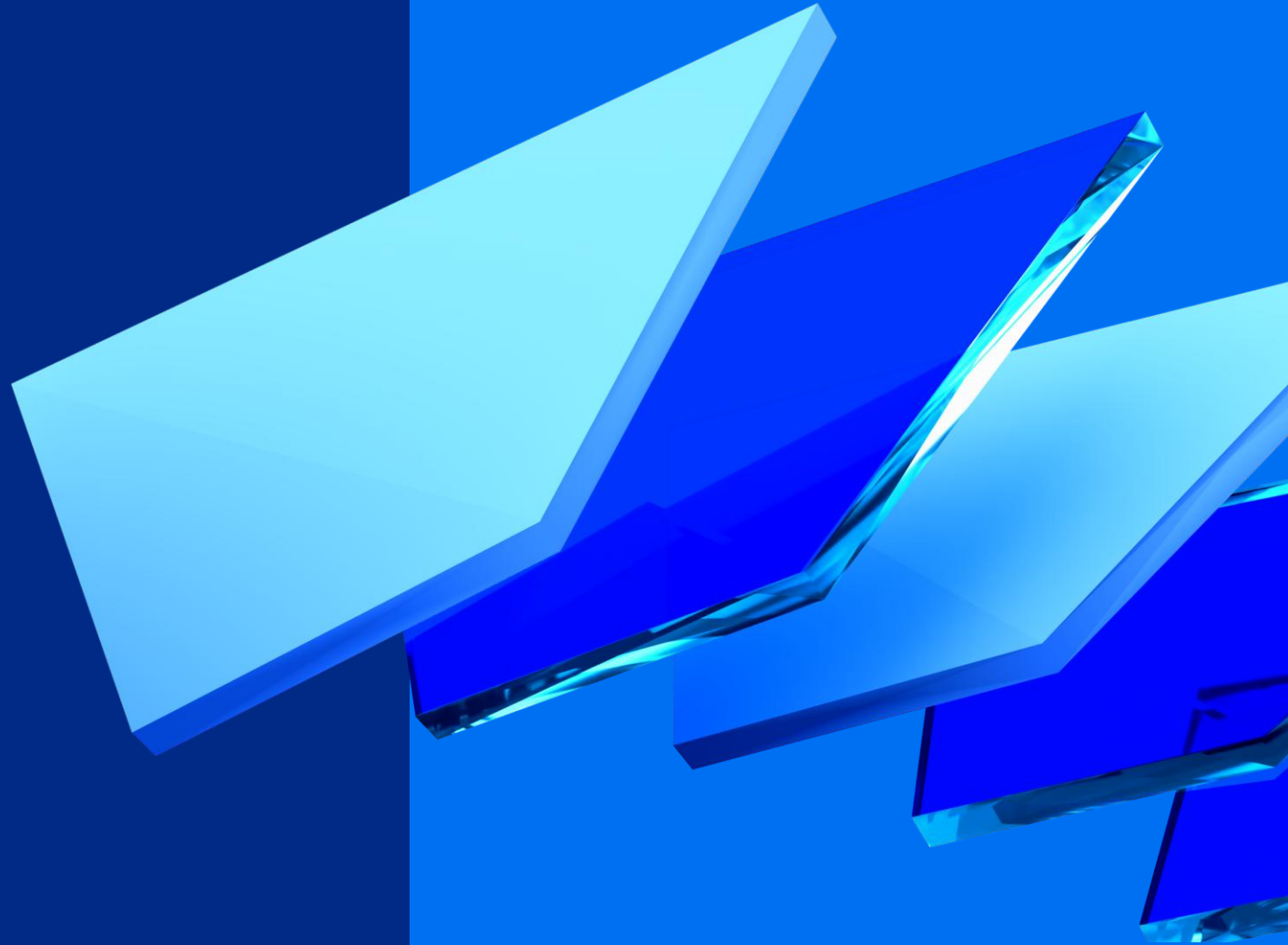
## **3** Measure adoption, process impact and value

- Establish clear KPIs for process transformation and AI solution uptake across business units.
- Continually track value realization, productivity gains, and efficiency improvements post-AI implementation.
- Foster accountability and ongoing optimization through transparent metrics and business outcomes.

# Thank you

**Majeed Malik**

Enterprise AI Product & Partner Management, SAP SE



Follow us



[www.sap.com/contactsap](http://www.sap.com/contactsap)

© 2025 SAP SE or an SAP affiliate company. All rights reserved.

No part of this publication may be reproduced or transmitted in any form or for any purpose without the express permission of SAP SE or an SAP affiliate company.

The information contained herein may be changed without prior notice. Some software products marketed by SAP SE and its distributors contain proprietary software components of other software vendors. National product specifications may vary.

These materials are provided by SAP SE or an SAP affiliate company for informational purposes only, without representation or warranty of any kind, and SAP or its affiliated companies shall not be liable for errors or omissions with respect to the materials. The only warranties for SAP or SAP affiliate company products and services are those that are set forth in the express warranty statements accompanying such products and services, if any. Nothing herein should be construed as constituting an additional warranty.

In particular, SAP SE or its affiliated companies have no obligation to pursue any course of business outlined in this document or any related presentation, or to develop or release any functionality mentioned therein. This document, or any related presentation, and SAP SE's or its affiliated companies' strategy and possible future developments, products, and/or platforms, directions, and functionality are all subject to change and may be changed by SAP SE or its affiliated companies at any time for any reason without notice. The information in this document is not a commitment, promise, or legal obligation to deliver any material, code, or functionality. All forward-looking statements are subject to various risks and uncertainties that could cause actual results to differ materially from expectations. Readers are cautioned not to place undue reliance on these forward-looking statements, and they should not be relied upon in making purchasing decisions.

SAP and other SAP products and services mentioned herein as well as their respective logos are trademarks or registered trademarks of SAP SE (or an SAP affiliate company) in Germany and other countries. All other product and service names mentioned are the trademarks of their respective companies.

See [www.sap.com/trademark](http://www.sap.com/trademark) for additional trademark information and notices.