

Power data-driven Business Transformation

Silvio Arcangeli

VP, Head of Product Management
SAP Signavio Process Analysis and Mining

October 30, 2025



Statement of Confidentiality and Exceptions

The furnishing of this document is subject to contract and shall not be construed as an offer or as constituting a binding agreement on the part of SAP to enter into any relationship. SAP provides this document as a guide to facilitate discussions around licensing SAP software. This document cannot be attached as an exhibit to contracts as it is a working document.

This document may outline our general product / services direction and should not be relied on in making a purchase decision. This document is not subject to your license or services agreement or any other agreement with SAP. SAP has no obligation to pursue any course of business outlined in this document, provide any services or to develop or to release any functionality mentioned in this document. This document and SAP's strategy and possible future developments are subject to change and may be changed by SAP at any time for any reason without notice.

The contents of this document shall remain the confidential property of SAP and may not be communicated to any other party without the prior written approval of SAP. This document must not be reproduced in whole or in part except with the prior written consent of SAP and then only on condition that SAP's and any other copyright notices are included in such reproduction. No information as to the contents or subject matter of this document shall be given or communicated in any manner whatsoever to any third party without the prior written consent of SAP.



Business Transformation Management

Join the SAP User Group Series!



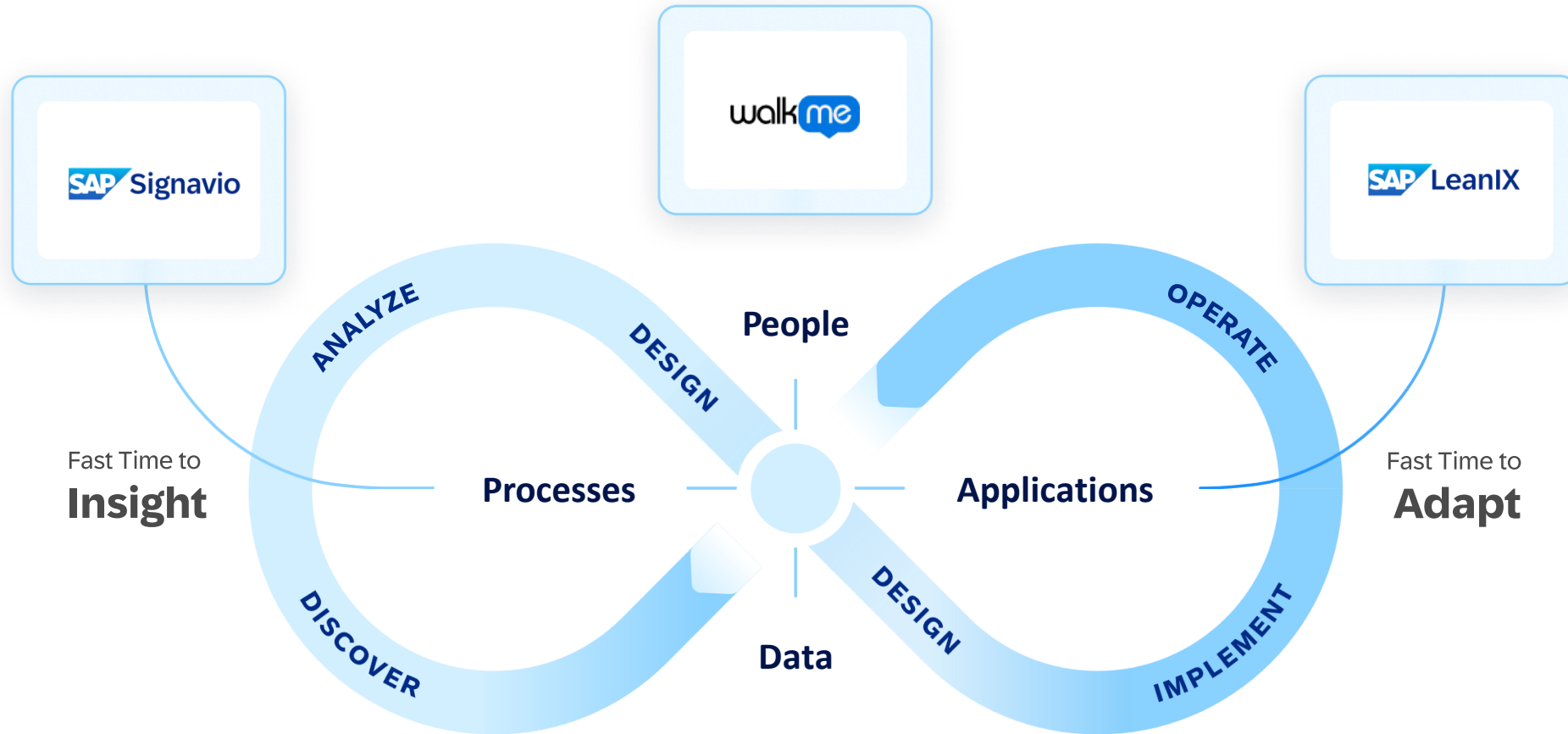
For seven weeks, explore how strategy, operations, and technology come together to turn transformation into a strategic capability—with SAP Signavio, SAP LeanIX, and WalkMe.

Oct 16 – Dec 03, 2025 | Live on YouTube



Business Transformation

From strategy to execution to continuous excellence



Methodology | Best-Practices | Automation | Integration

Powered by Business AI

Transforming a business looks like a scary endeavor



Poor visibility

Enterprise Analytics are tough

“I’d love to get better visibility on my processes, but my IT needs a 1 month project just to give me a new KPI.”



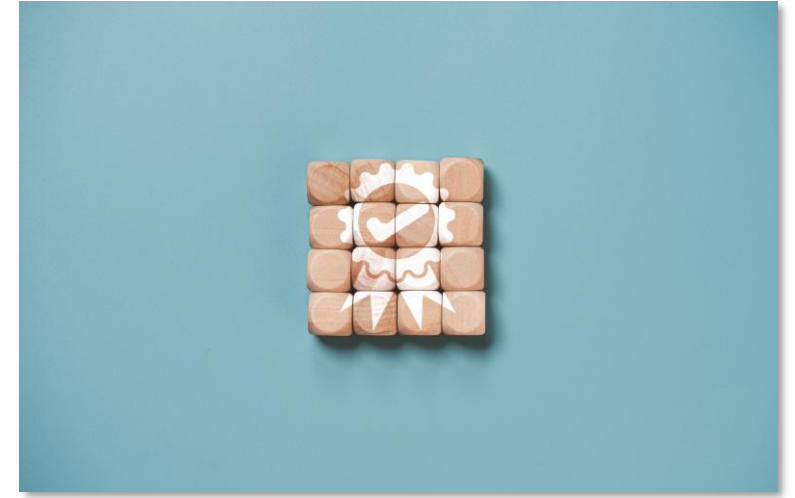
Uncertain value

ROI is tough

“Did we identify the right transformation?”

“Is the new tech worthwhile or is it just hype?”

“Can we truly unlock its full value potential?”



Too much risk

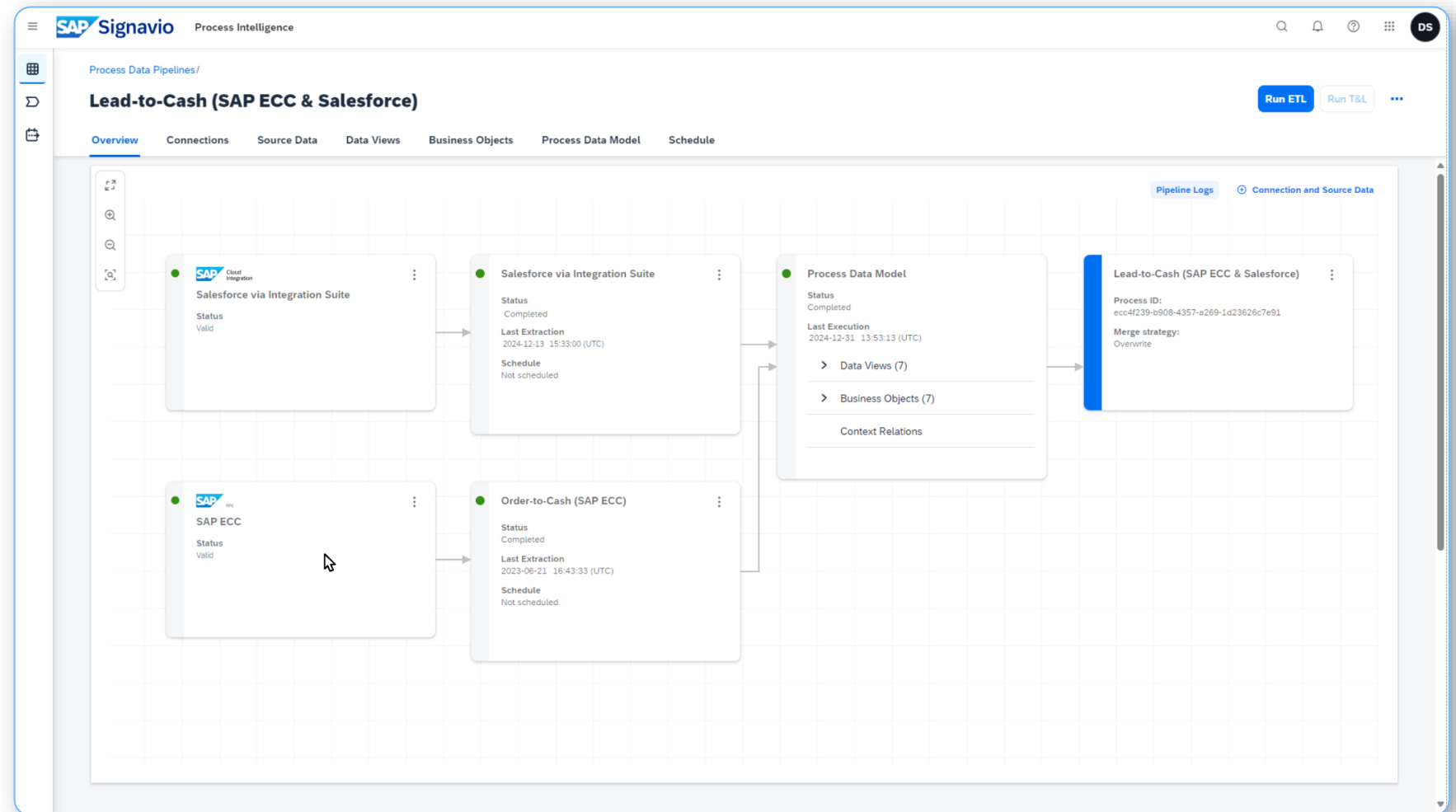
Compliance is tough

“Checking compliance on data and processes is so hard and slows down any change.”

Process analysis and mining

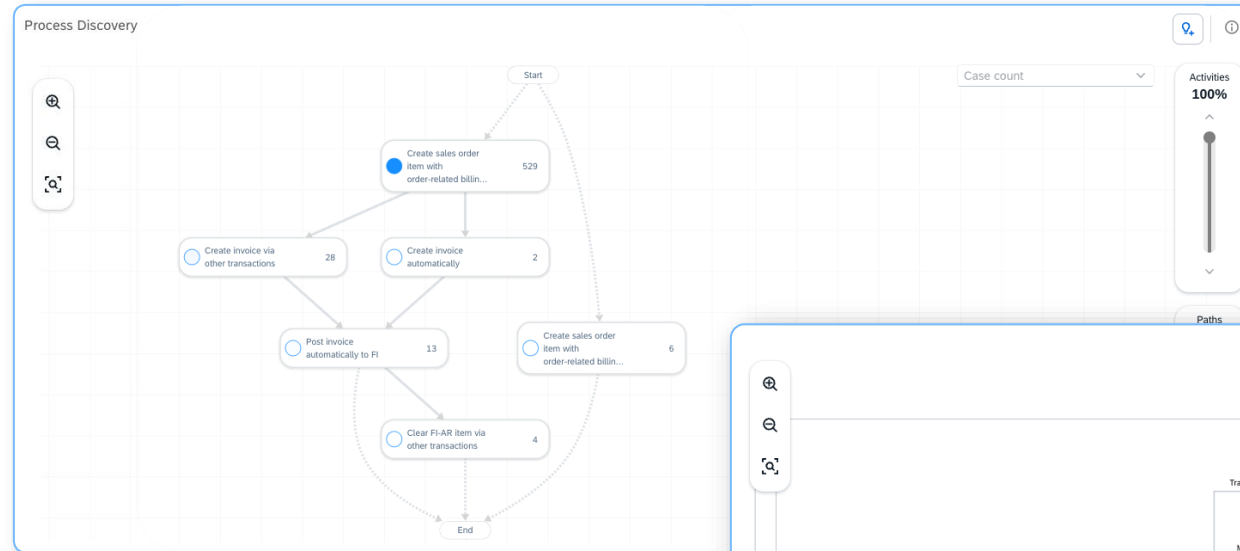
Enable data-driven visibility on your processes

Quickly gather **process data** across heterogeneous landscapes via **enterprise-ready data management and content**

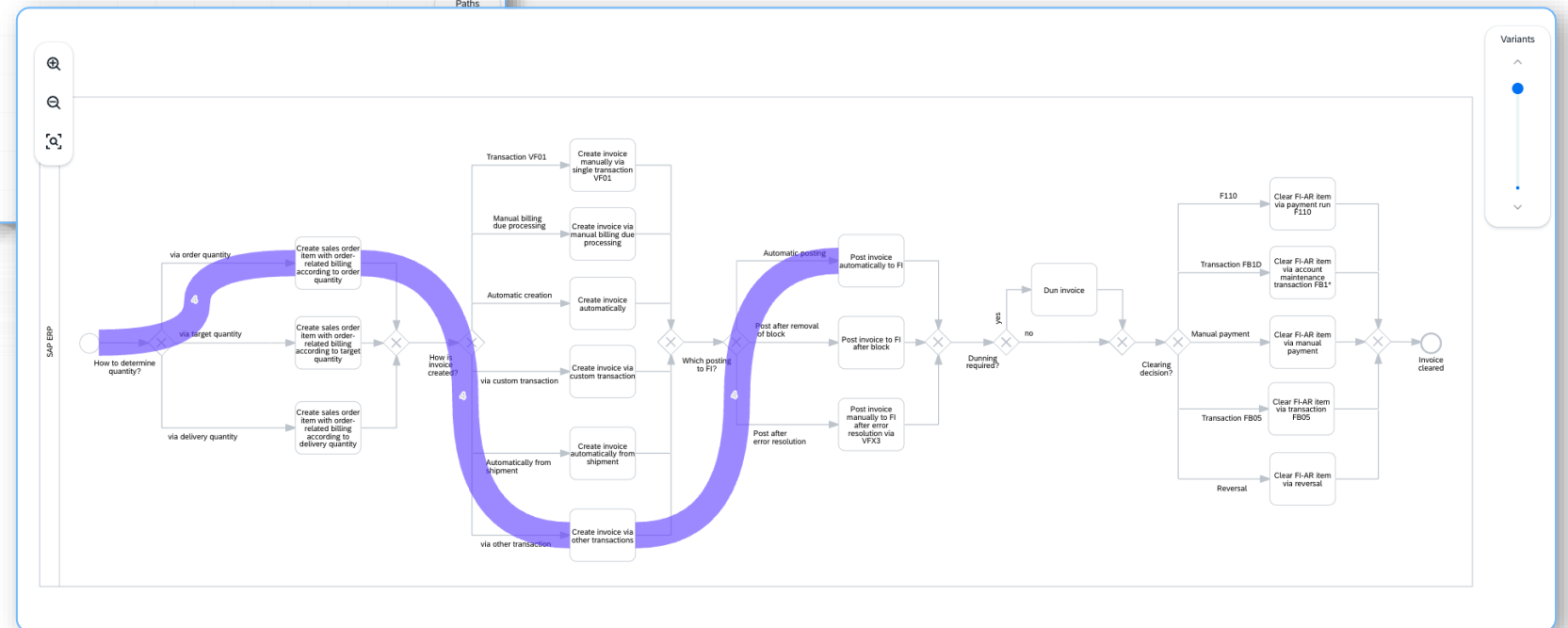


Process analysis and mining

Enable data-driven visibility on your processes



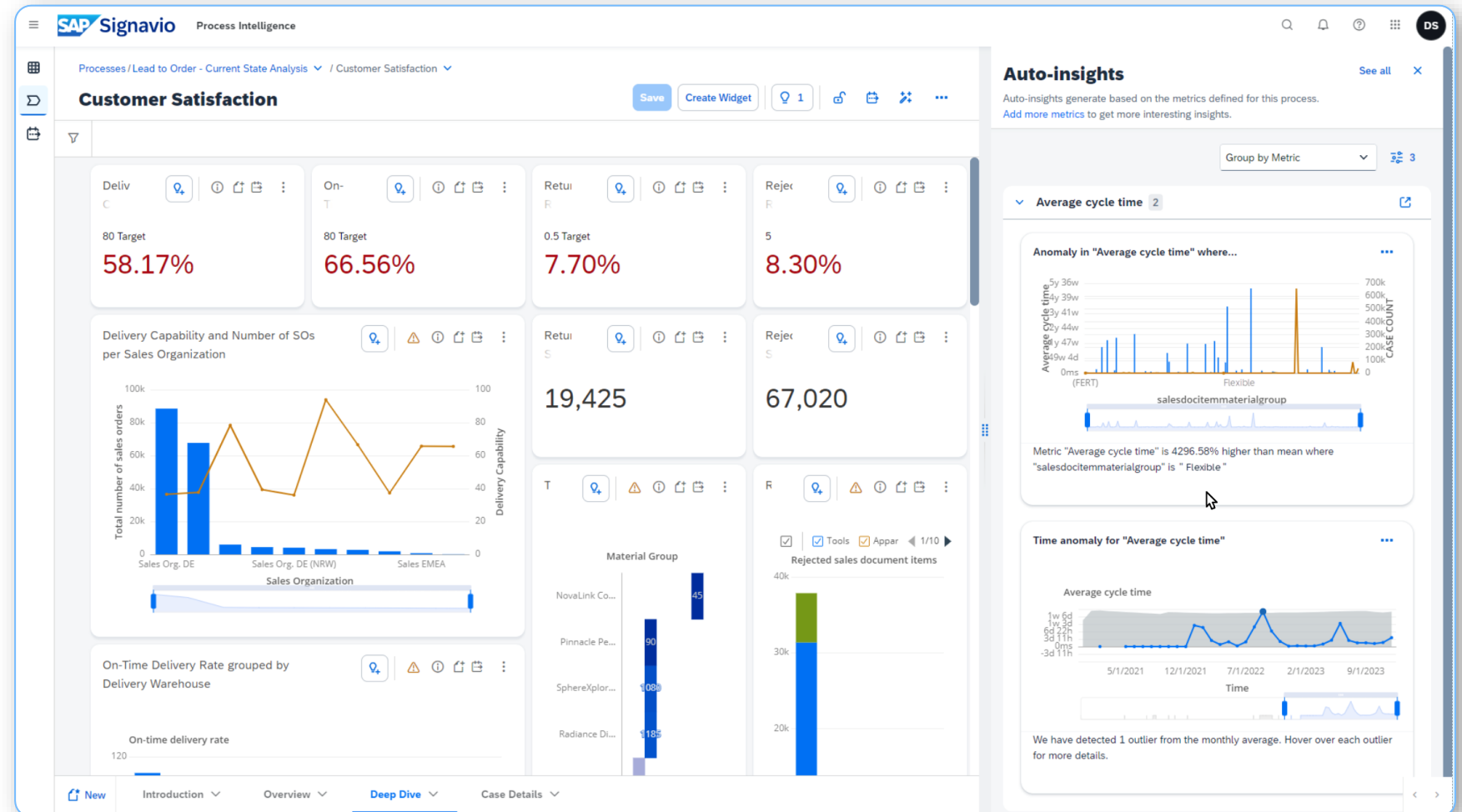
Unveiling the **unknowns** in your org: gather **visibility on your processes** by discovering all the **actual execution paths**



Process analysis and mining

Enable data-driven visibility on your processes

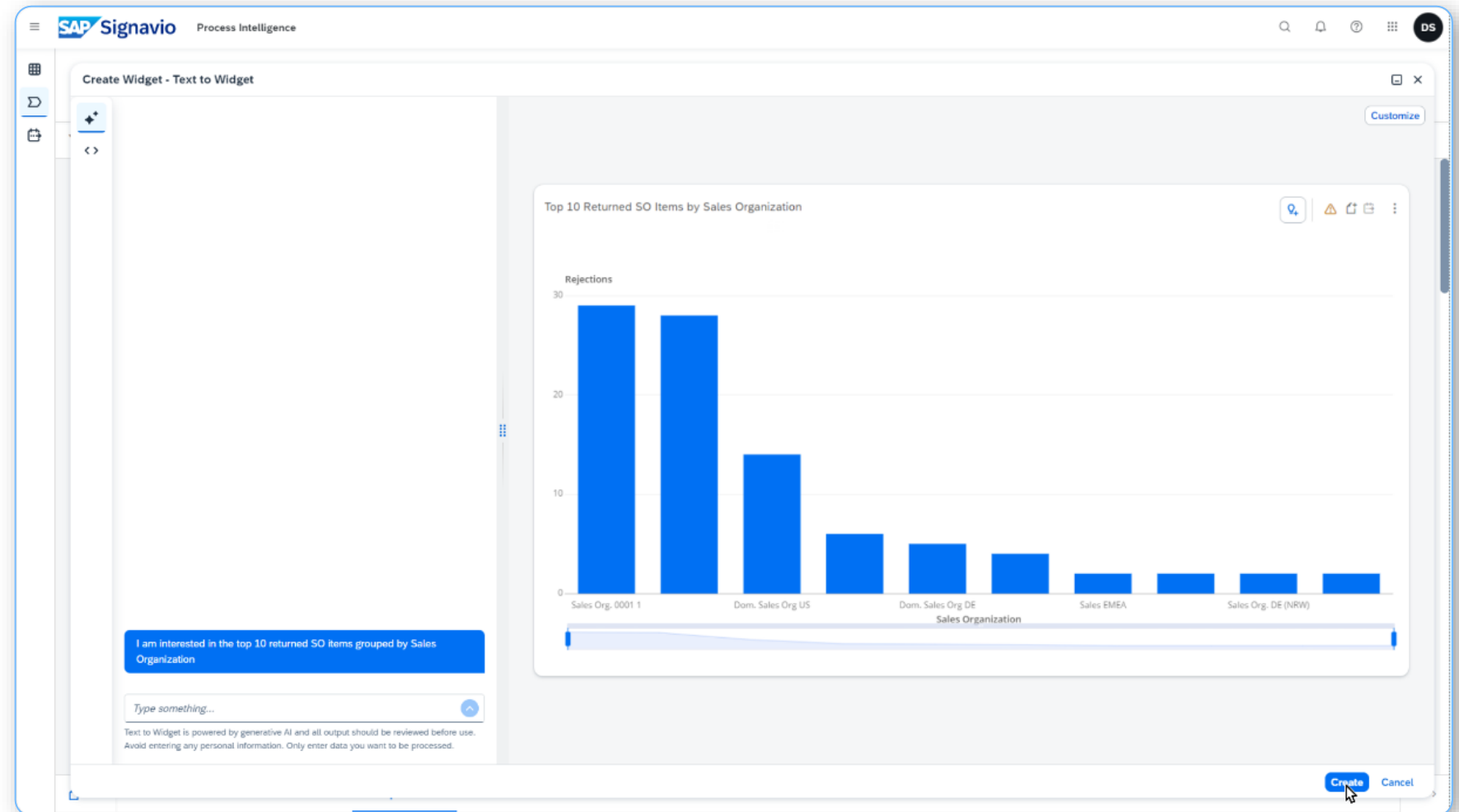
Make **analysis simpler**
and **faster** via
Automated Insights



Process analysis and mining

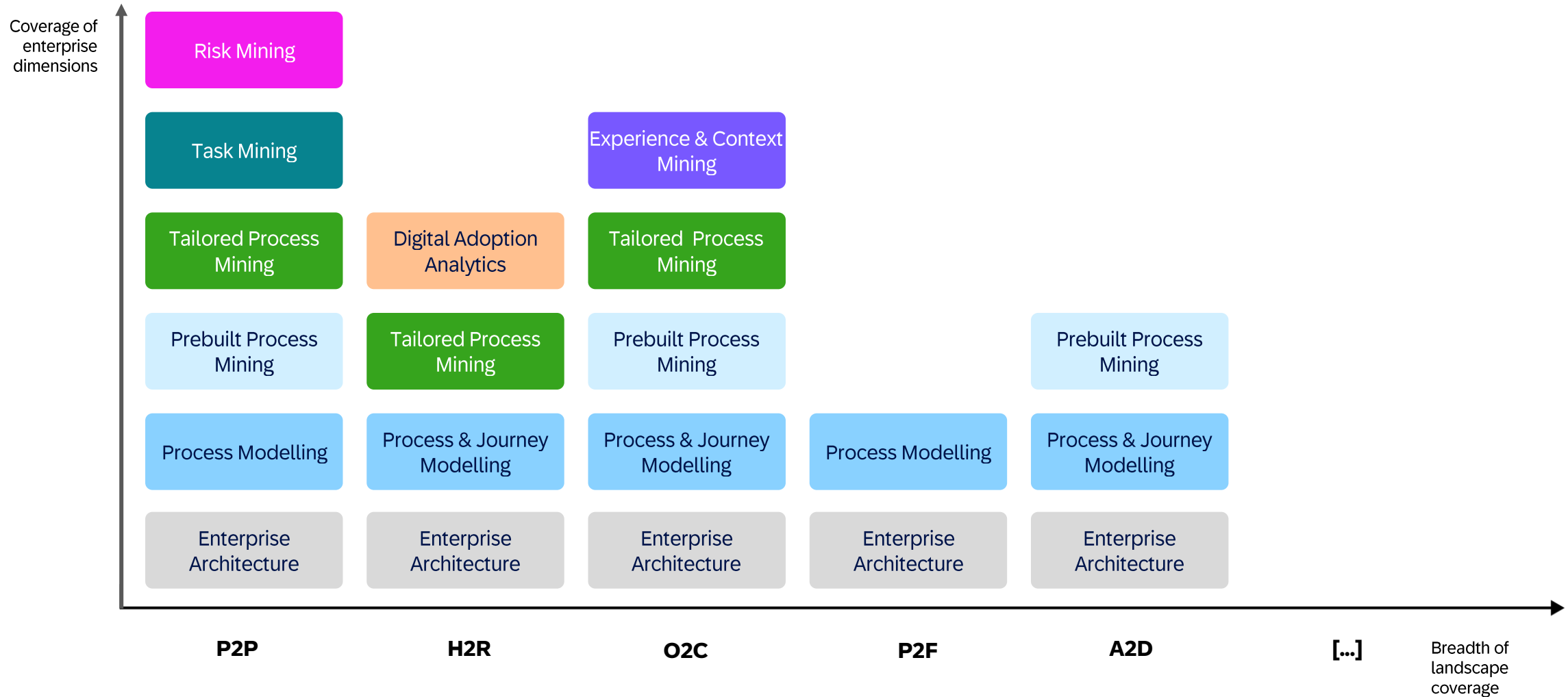
Enable data-driven visibility on your processes

Leverage AI to make **analysis easier** and **accessible to more stakeholders**



Modular observability

The single source of truth for business processes and enterprise dimensions



AI-driven Process Intelligence

A comprehensive approach to cover every need in terms of speed and granularity

Prebuilt process mining

Tailored process mining

User behavior and task mining

AI assisted analysis and insights consumption



Agentic process and risk mining

AI-assisted root-cause analysis (beta)

AI-assisted process analyser (beta)

Automated Insights

Agentic task and user behavior mining

WalkMe X copilot
For IT, HR, Sales, etc.

Plug and play process mining
(for SAP systems)

Process mining

Experience-driven process mining



Risk mining



Task mining



User experience management



Digital adoption analysis



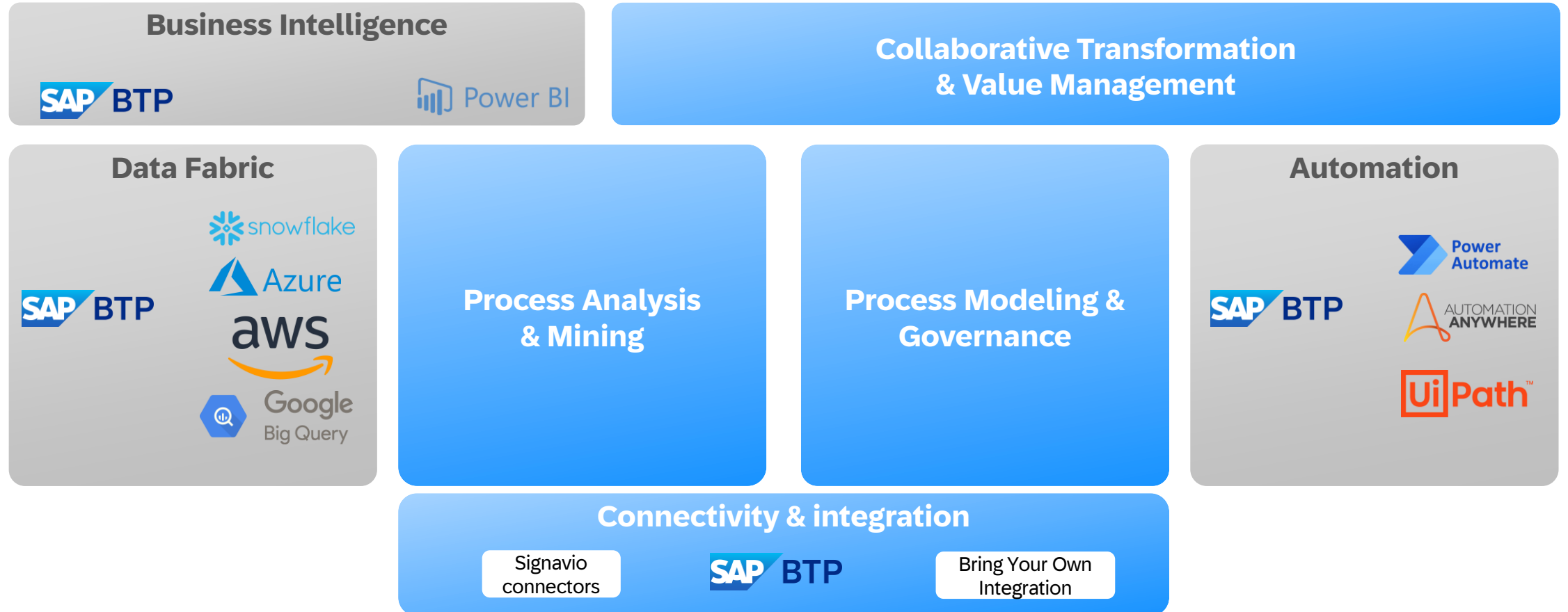
Fastest insights



Most granular insights

Scaling Business Transformation Across The Enterprise

How SAP Signavio integrates into all major enterprise landscapes



SAP ECC

SAP S/4HANA

SAP SuccessFactors

SAP Ariba

SAP Concur

servicenow

coupa

salesforce

Microsoft

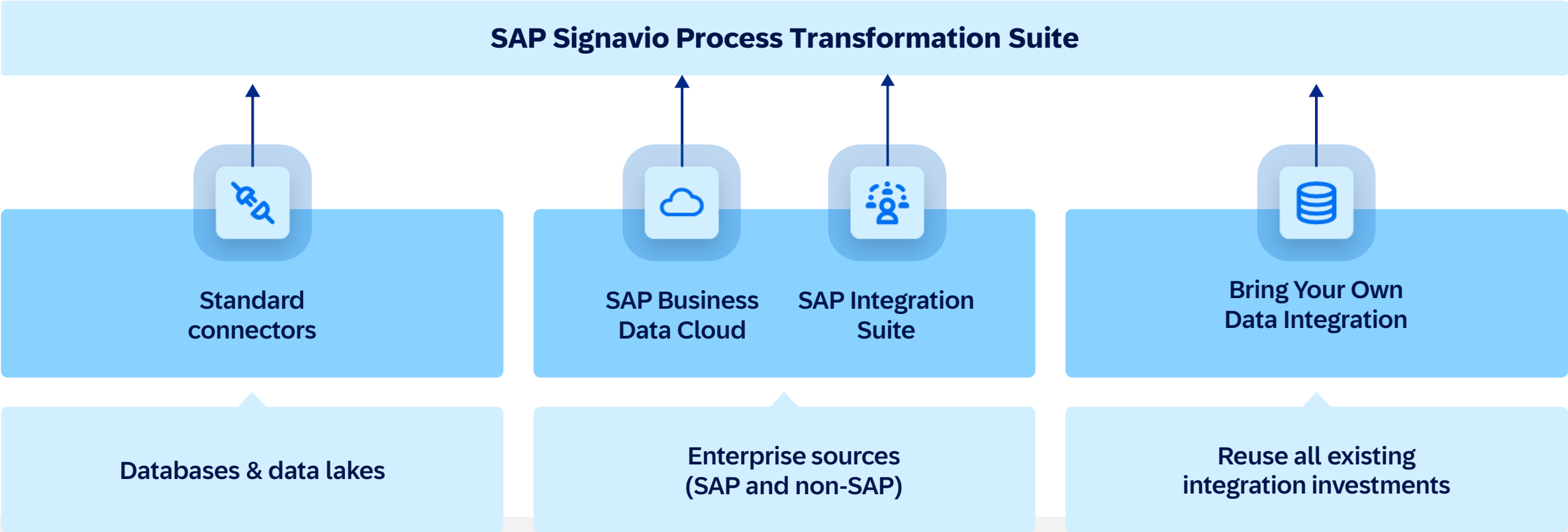
workday.

ORACLE®

ATLASSIAN

AI-driven Process Intelligence

Wide span of data management option to address any enterprise landscape



SAP ECC

SAP S/4HANA

SAP SuccessFactors

SAP Ariba

SAP Concur

servicenow

coupa

salesforce

Microsoft

workday

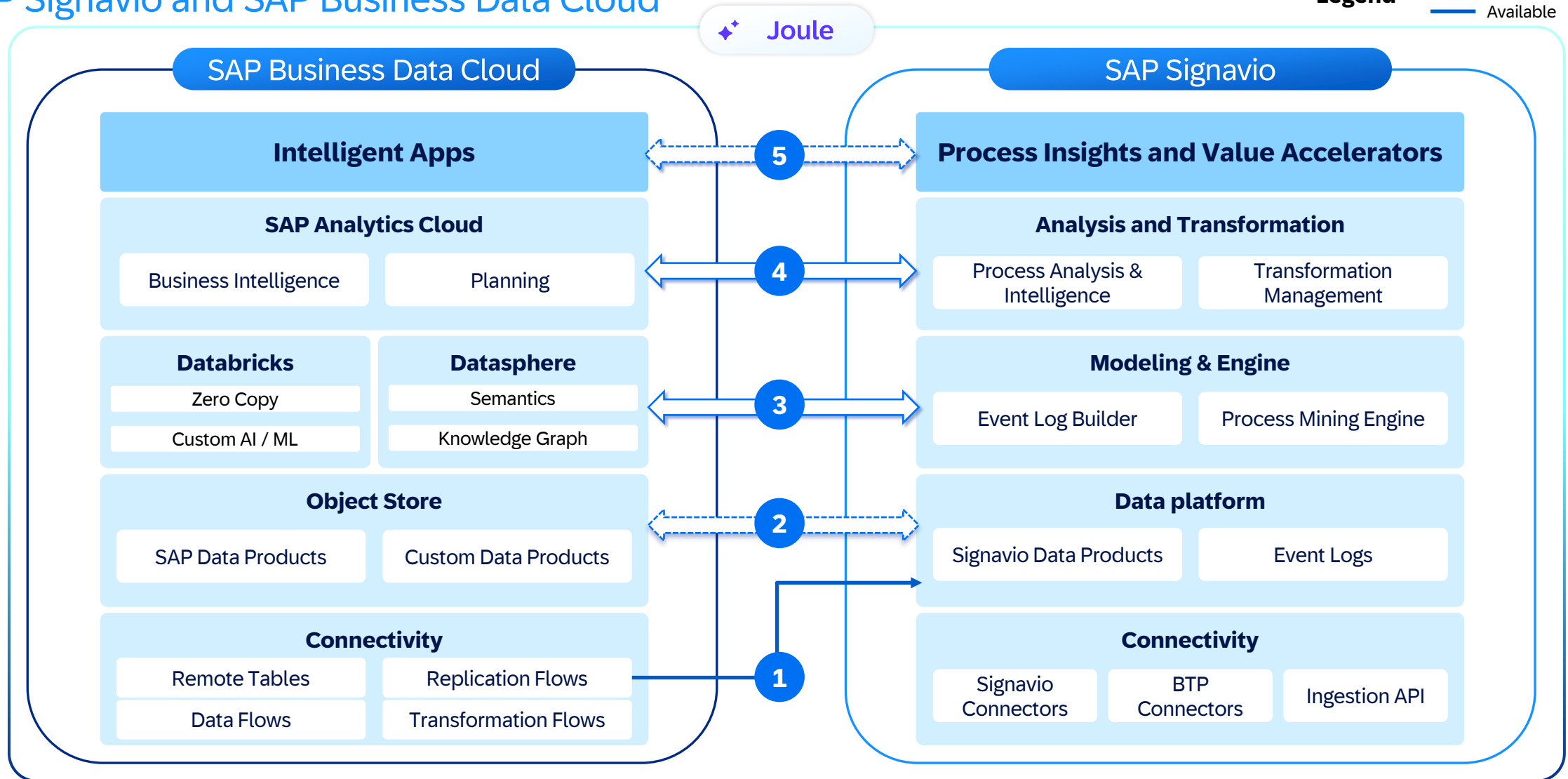
ORACLE

ATLASSIAN

Process-aware Enterprise Analytics

SAP Signavio and SAP Business Data Cloud

Legend
--- Vision
— Available



Achieve Rapid Insights to Drive Operational Performance

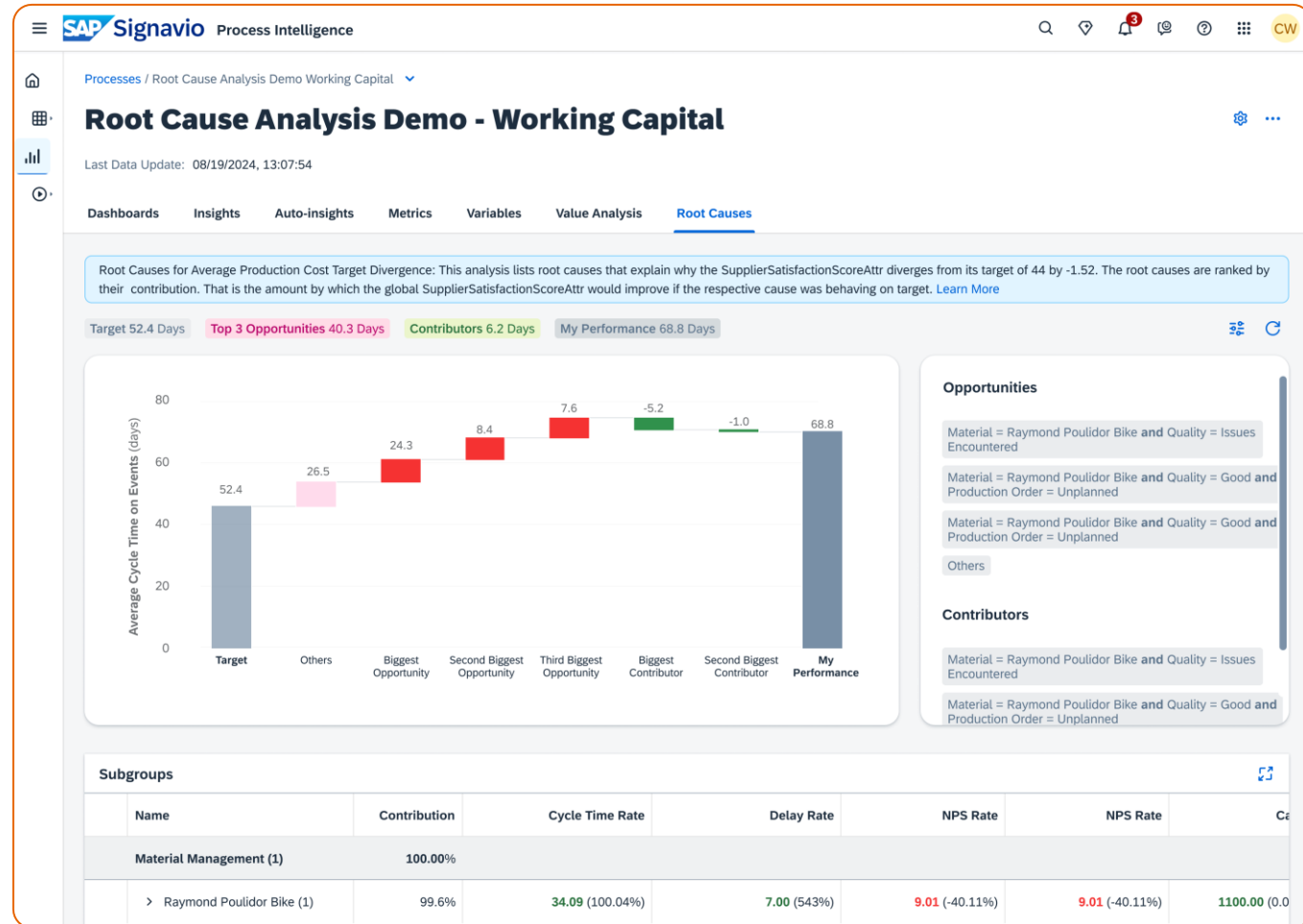
Automated Root Cause Analysis



Process **Analysts**
Process **Owners**

It identifies key drivers of process performance indicators, enabling process owners to quickly achieve operational excellence.

- analyses also process behaviours, besides data dimensions
- uncovers improvement opportunities in seconds
- prioritizes initiatives based on their true impact.



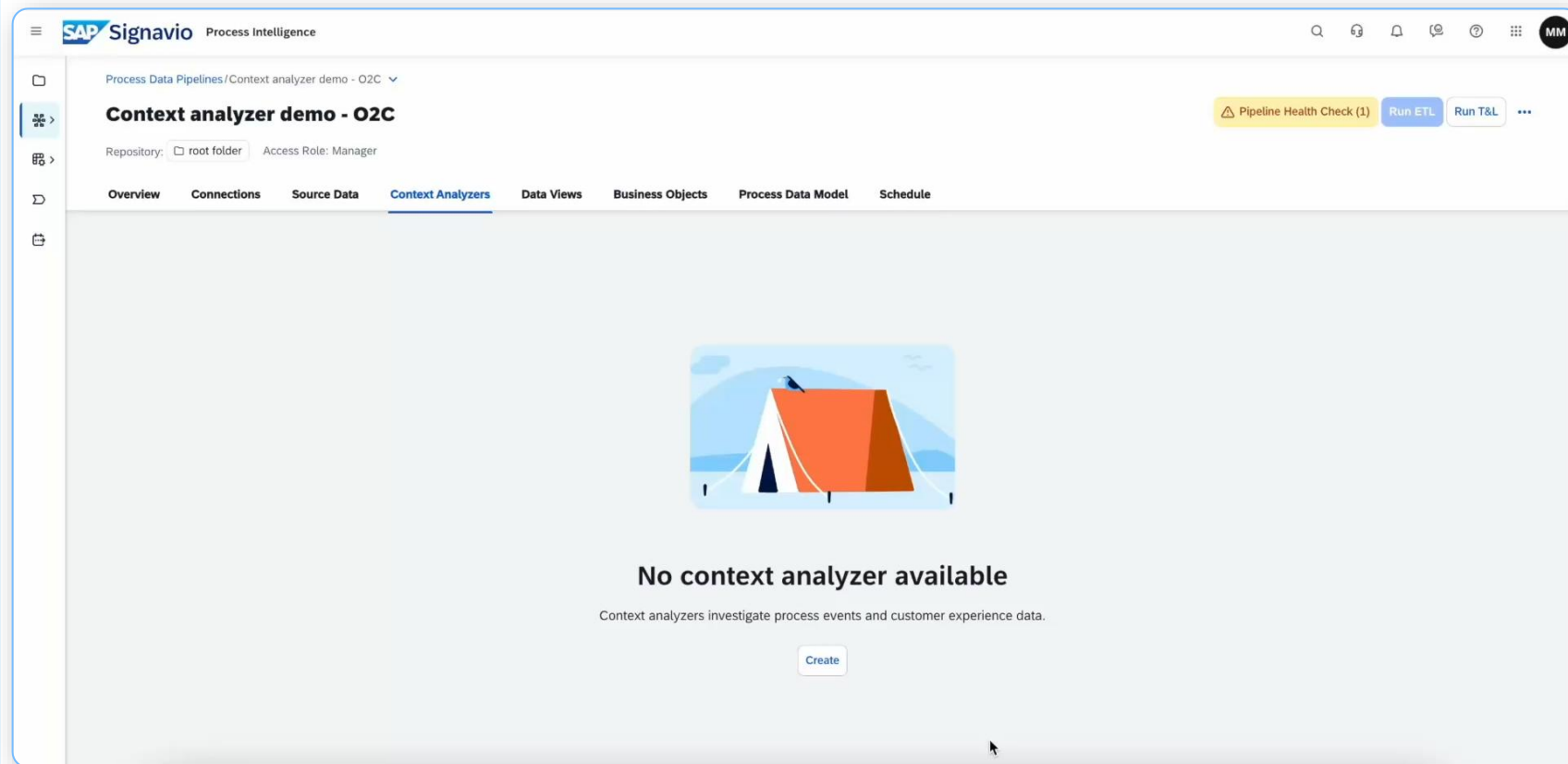
Connect customer experience and feedback to process steps

AI-assisted context analyzer



Process **Analysts**
Process **Owners**

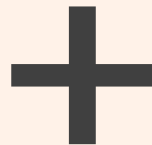
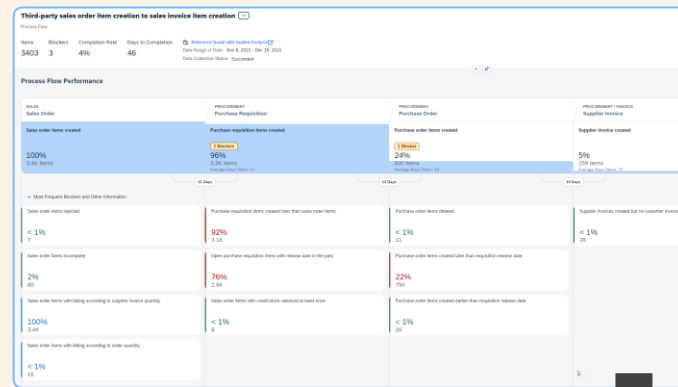
- Augments process analysis with contextual unstructured data.
- Automatically maps contextual data to corresponding process events.
- Enables analysing processes according to experience and other contextual dimensions.



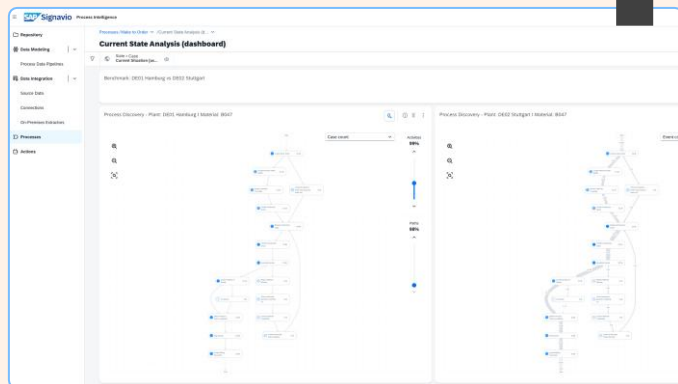
SAP Signavio: one single product for process analysis and mining

Past

Process Insights
Best-in-class pre-built analysis for SAP

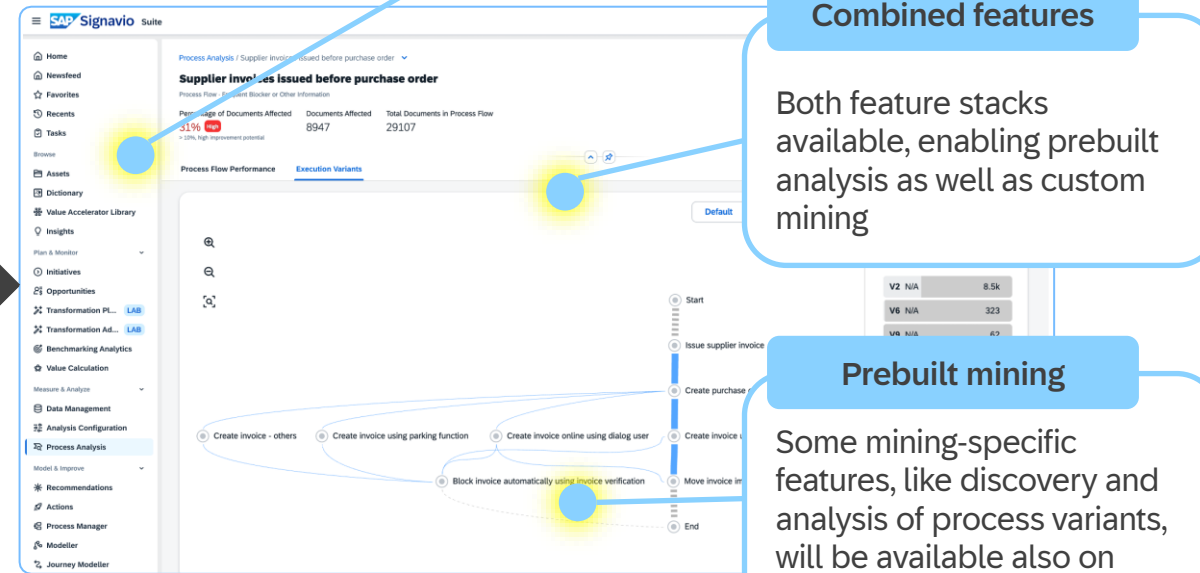


Process Intelligence
Market leading process mining



Future

Democratized and faster mining



One interface

A single product, with a unified and consistent user interface

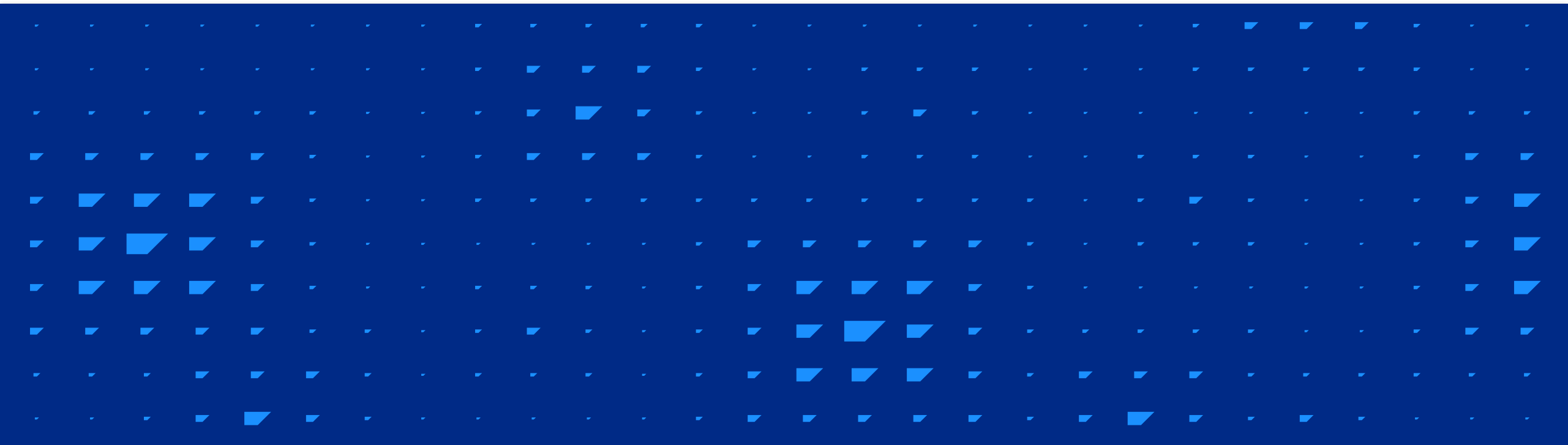
Combined features

Both feature stacks available, enabling prebuilt analysis as well as custom mining

Prebuilt mining

Some mining-specific features, like discovery and analysis of process variants, will be available also on prebuilt analysis scenarios!

Roadmap highlights



Widen and simplify the detection of non-conforming behaviors

Process Conformance Analysis via no-code Process Atoms in Process Intelligence



Process **Managers**
Business **Analysts, first**
time users

No-code Process Atoms streamline conformance checking providing a mean to detect non-conforming behavior across processes which haven't been modelled yet.

The screenshot displays the SAP Signavio Process Intelligence interface. At the top, it shows the SAP Signavio logo and 'Process Intelligence'. Below this, there's a navigation bar with options like 'Investigations', 'Dashboards', 'Process Atoms', 'Metrics', 'Variables', 'Insights', and 'Custom Attributes'. A notification bar indicates '134 Process Atoms identified, including 5 Unrecognized Process Atoms'. The main section is titled 'Process Atoms (2,231)' and includes buttons for 'Create New Conformance Check' and 'Create New Process Atoms'. Below this is a table with the following columns: Process Atoms, Violations, Impact, Source, and Note. The table lists several process atoms with their respective violation counts and impact levels.

Process Atoms	Violations	Impact	Source	Note
<input type="checkbox"/> Open ticket must not occur after Closed while blocked	6024	High	BPMN model	[Icon] ...
<input type="checkbox"/> Closed while blocked must occur	3842	Medium	BPMN model	[Icon] ...
<input type="checkbox"/> Request escalation is not followed by a corresponding	906	Low	Manual atom	[Icon] ...
<input type="checkbox"/> Escalate ticket is not preceded by a corresponding Request escalation	6098	Critical	Manual atom	[Icon] ...
<input type="checkbox"/> Open ticket must not occur after Closed while blocked	6024	High	BPMN model	[Icon] ...
<input type="checkbox"/> Closed while blocked must occur	3842	Medium	BPMN model	[Icon] ...
<input type="checkbox"/> Request escalation is not followed by a corresponding	906	Low	Manual atom	[Icon] ...
<input type="checkbox"/> Escalate ticket is not preceded by a corresponding Request escalation	6098	Critical	Manual atom	[Icon] ...
<input type="checkbox"/> Open ticket must not occur after Closed while blocked	6024	High	BPMN model	[Icon] ...
<input type="checkbox"/> Closed while blocked must occur	3842	Medium	BPMN model	[Icon] ...
<input type="checkbox"/> Request escalation is not followed by a corresponding	906	Low	Manual atom	[Icon] ...

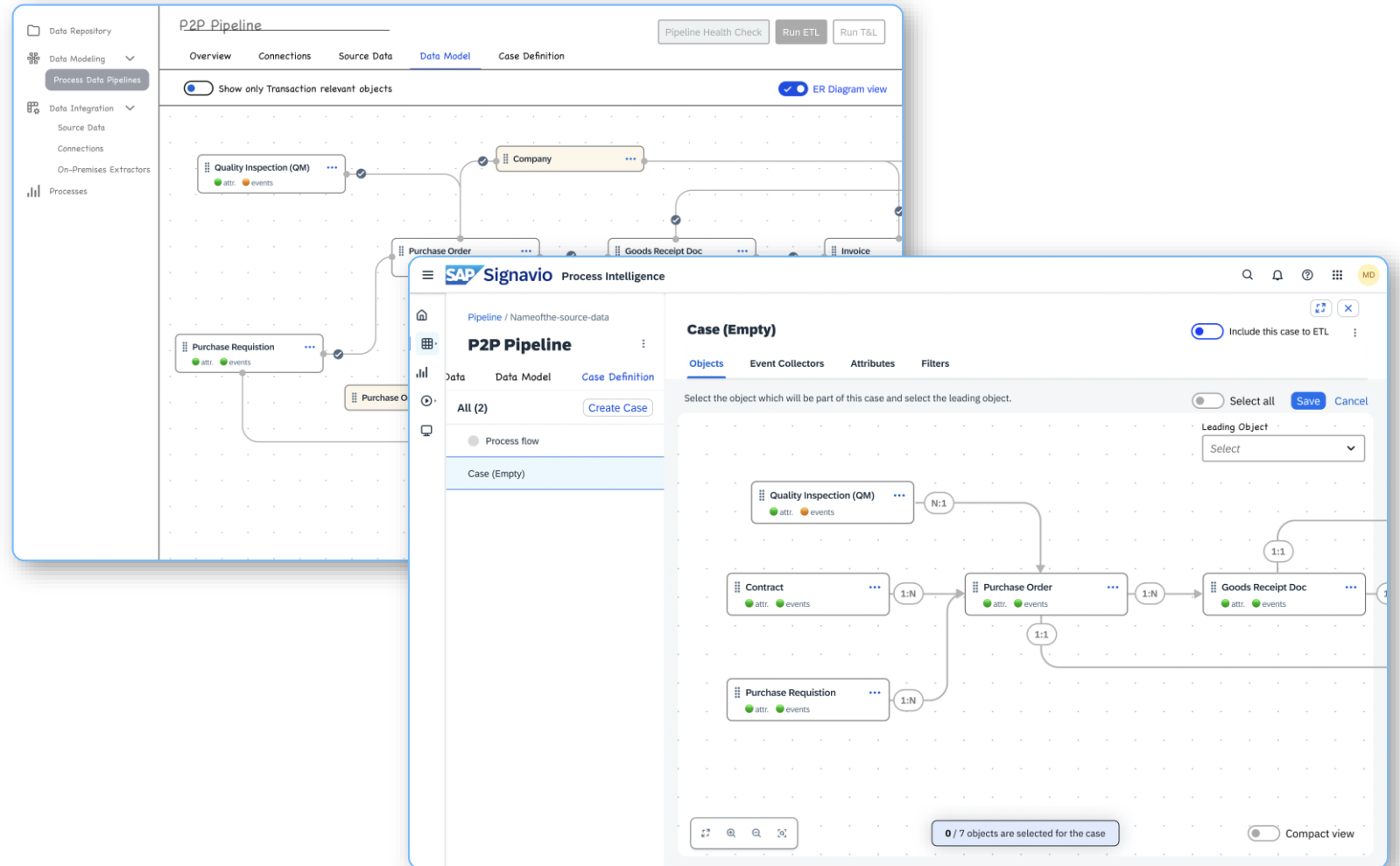
Simplify analysis and mining of complex process landscapes

A unified object-oriented approach in Process Intelligence



Process **Managers**
 Business **Users**
 Business **Analysts**

The object-based data modeling capability offers a unified, object-oriented approach that simplifies the analysis of interrelated business objects across end-to-end processes.



Key takeaways



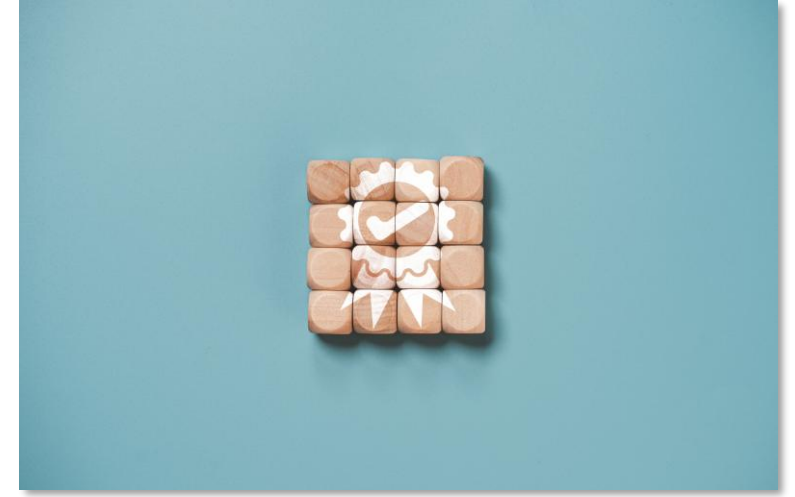
Gather full visibility

Uncover the unknowns by discovery the process reality and quickly identifying bottlenecks and issues.



From data to value

Identify the root causes of process bottlenecks to turn insights into improvement opportunities with quantified value, to steer value realization.



Streamline compliance

Apply conformance checking more quickly, easily and widely across your process house, to manage risk without losing agility.

Thank you.

Silvio Arcangeli

VP, Head of Product Management
SAP Signavio Process Analysis and Mining

silvio.arcangeli@sap.com

Follow us



www.sap.com/contactsap

© 2026 SAP SE or an SAP affiliate company. All rights reserved.

No part of this publication may be reproduced or transmitted in any form or for any purpose without the express permission of SAP SE or an SAP affiliate company.

The information contained herein may be changed without prior notice. Some software products marketed by SAP SE and its distributors contain proprietary software components of other software vendors. National product specifications may vary.

These materials are provided by SAP SE or an SAP affiliate company for informational purposes only, without representation or warranty of any kind, and SAP or its affiliated companies shall not be liable for errors or omissions with respect to the materials. The only warranties for SAP or SAP affiliate company products and services are those that are set forth in the express warranty statements accompanying such products and services, if any. Nothing herein should be construed as constituting an additional warranty.

In particular, SAP SE or its affiliated companies have no obligation to pursue any course of business outlined in this document or any related presentation, or to develop or release any functionality mentioned therein. This document, or any related presentation, and SAP SE's or its affiliated companies' strategy and possible future developments, products, and/or platforms, directions, and functionality are all subject to change and may be changed by SAP SE or its affiliated companies at any time for any reason without notice. The information in this document is not a commitment, promise, or legal obligation to deliver any material, code, or functionality. All forward-looking statements are subject to various risks and uncertainties that could cause actual results to differ materially from expectations. Readers are cautioned not to place undue reliance on these forward-looking statements, and they should not be relied upon in making purchasing decisions.

SAP and other SAP products and services mentioned herein as well as their respective logos are trademarks or registered trademarks of SAP SE (or an SAP affiliate company) in Germany and other countries. All other product and service names mentioned are the trademarks of their respective companies.

See www.sap.com/trademark for additional trademark information and notices.

