



SAP SuccessFactors 

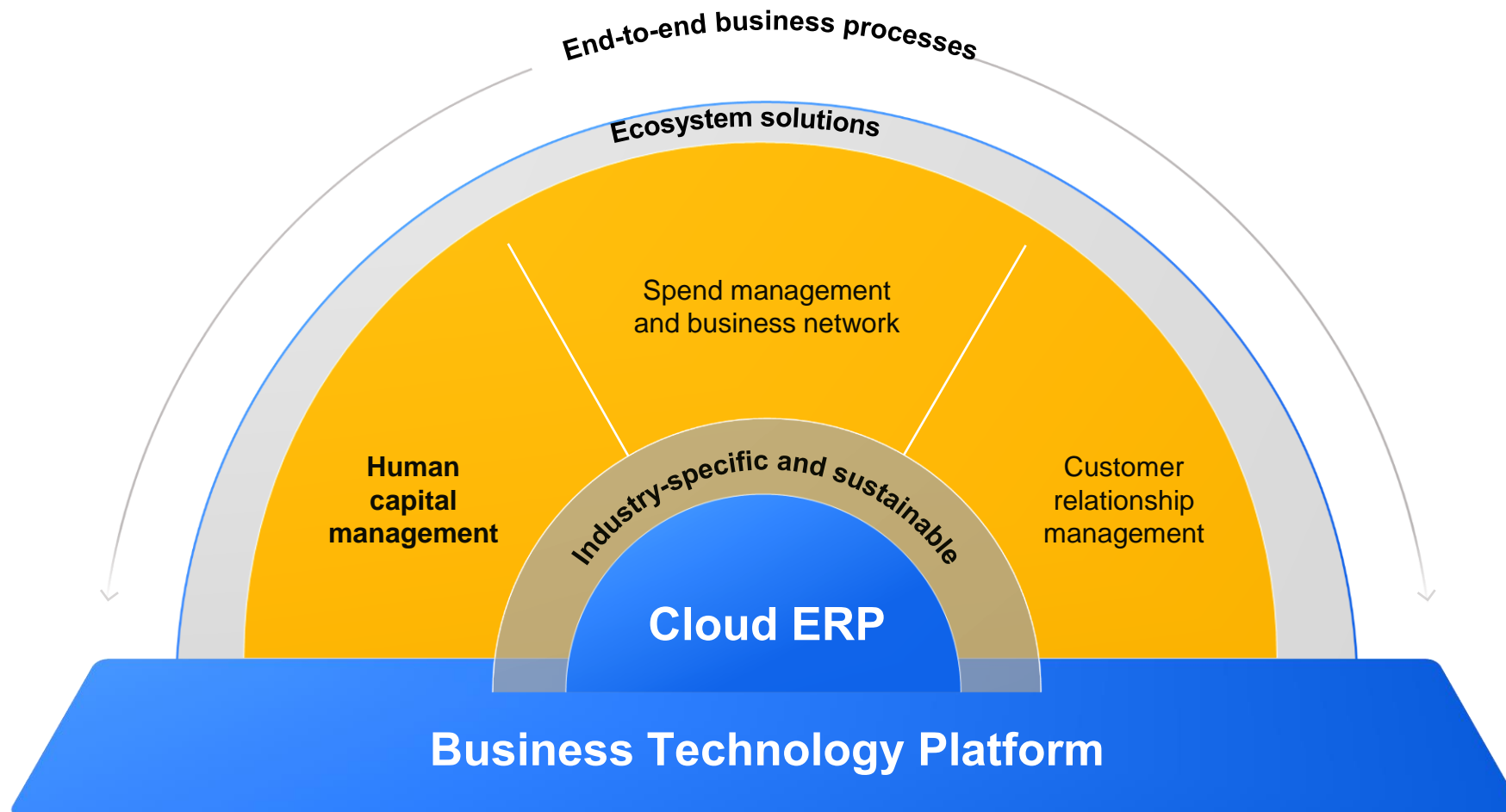
Perform Mass Data Changes in SAP SuccessFactors BTP for HXM

Kai Nottbohm, SAP

INTERNAL – SAP and Partners only

THE BEST RUN 

SAP Business Technology Platform is the foundation of the **Intelligent Sustainable Enterprise**



Sapient Insights' 2021-2022 HR Tech Survey: Aligned With BTP's Capabilities



The Survey Says...

25% increase in HR's use of ML, RPA, and Chatbots

On average, companies manage 37 HR system integrations

53% of companies use emerging technologies alongside their HR applications

What BTP Offers...



SAP Build

- Machine Learning
- Robotic Process Automation
- Chatbots
- Analytics
- Mobile
- Low Code/No Code



Integration Suite

- Open Connectors
- API Management
- Master Data Management
- X Number of Integrations

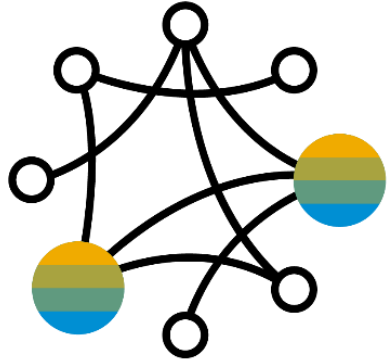


BTP Strengthens the HXM Suite

- Workforce Planning for EC
- eSignatures for Onboarding
- Mobile App for Learning
- Automation for Recruiting
- **THE POSSIBILITIES ARE ENDLESS....**

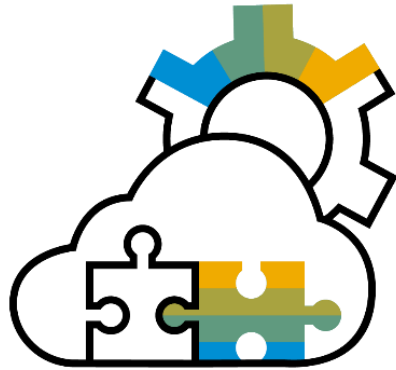
SAP Business Technology Platform

For HCM within the intelligent, sustainable enterprise



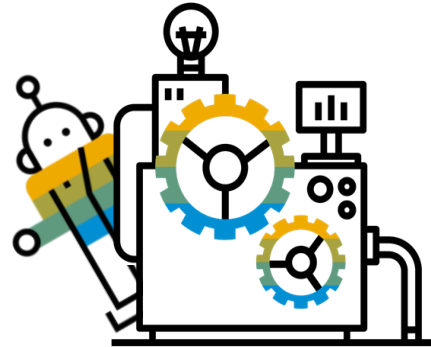
Integrate and Connect

HR data across your organization manage it as one cohesive enterprise



Build and Extend

people-centric apps, business processes and experiences



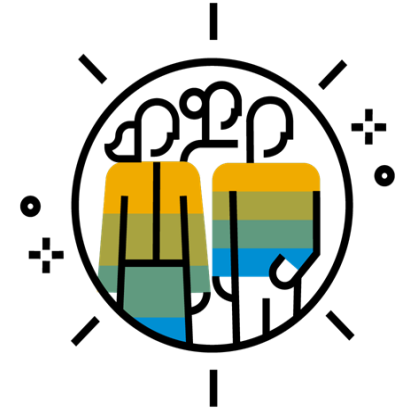
Automate and Optimize

to promote efficient business processes and remove manual and error-prone tasks



Analyze and Understand

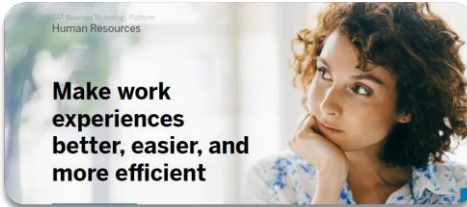
to gain insights from historical data across enterprise sources and applications



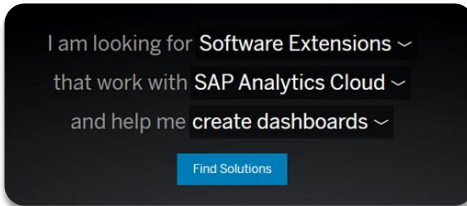
Plan and Model

workforce needs collaboratively and transparently with data from across your organization

Thank you.



Learn more about BTP for HR



Explore Partner apps in the SAP Store

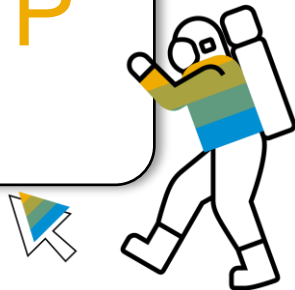
Accenture HR Data Loader



Discover the discovery center

IT, developer and technical how-to

Try SAP BTP for free



Accenture Services

Human Capital Management made simple