

A simpler and faster way to
automate business processes

Artificial Intelligence

SAP AI Business Services

Manuel Namyslo, SAP

1st of March, 2022

THE BEST RUN



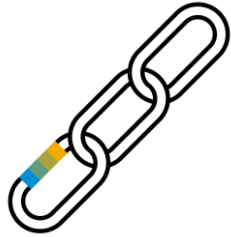
Disclaimer

The information in this presentation is confidential and proprietary to SAP and may not be disclosed without the permission of SAP. Except for your obligation to protect confidential information, this presentation is not subject to your license agreement or any other service or subscription agreement with SAP. SAP has no obligation to pursue any course of business outlined in this presentation or any related document, or to develop or release any functionality mentioned therein.

This presentation, or any related document and SAP's strategy and possible future developments, products and or platforms directions and functionality are all subject to change and may be changed by SAP at any time for any reason without notice. The information in this presentation is not a commitment, promise or legal obligation to deliver any material, code or functionality. This presentation is provided without a warranty of any kind, either express or implied, including but not limited to, the implied warranties of merchantability, fitness for a particular purpose, or non-infringement. This presentation is for informational purposes and may not be incorporated into a contract. SAP assumes no responsibility for errors or omissions in this presentation, except if such damages were caused by SAP's intentional or gross negligence.

All forward-looking statements are subject to various risks and uncertainties that could cause actual results to differ materially from expectations. Readers are cautioned not to place undue reliance on these forward-looking statements, which speak only as of their dates, and they should not be relied upon in making purchasing decisions.

The potential of intelligent technologies



Supply Chain

At least **50%**

of large global companies will be using **AI, advanced analytics and IoT in supply chain operations** by 2023*



Procurement

Almost **60%**

of individual tasks involved in the source-to-pay process have the potential to be **fully or largely automated** using currently available technologies**



Finance

Yet about **50%**

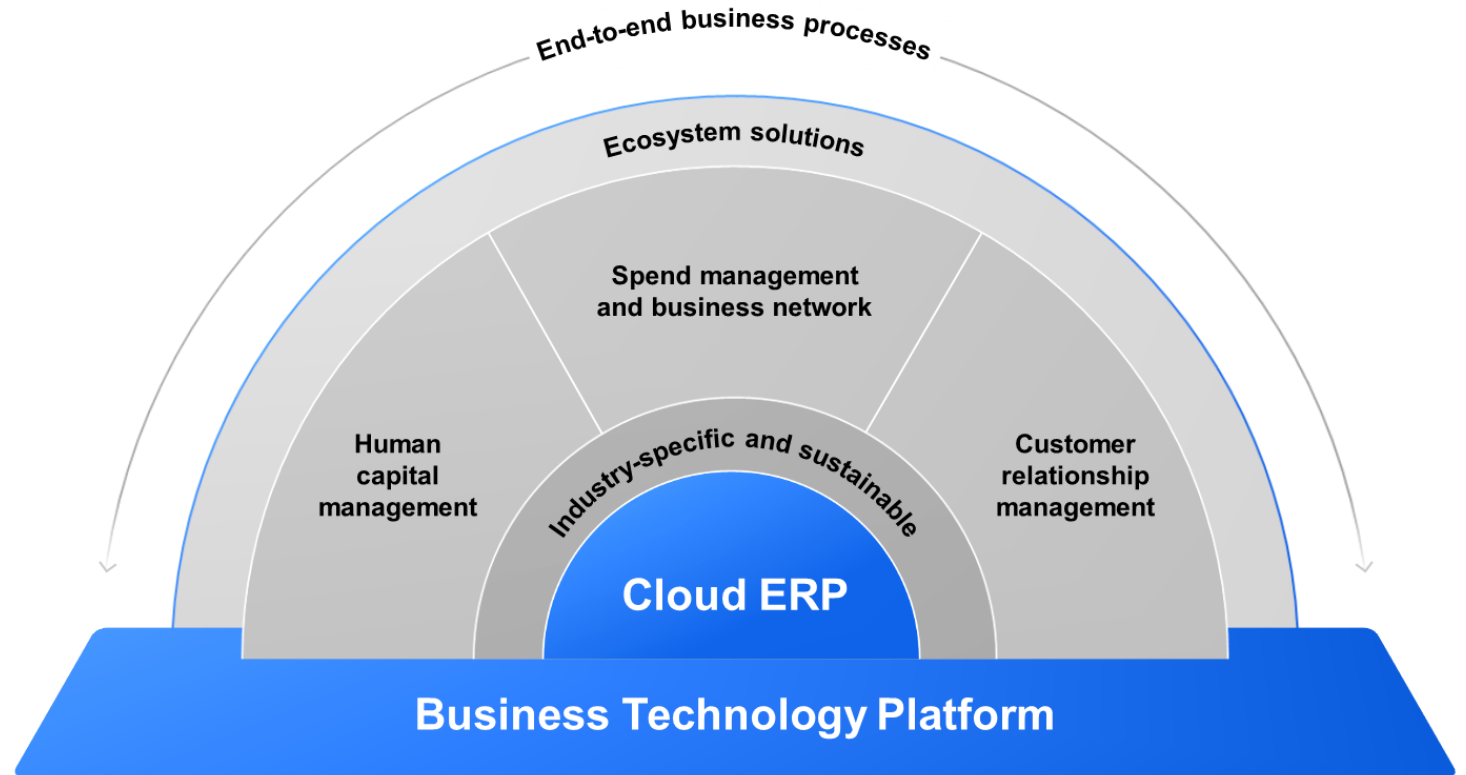
of the overall time of the workforce in finance and insurance is devoted to collecting and processing data, where **the potential for automation is high*****

* <https://www.gartner.com/smarterwithgartner/gartner-predicts-2019-for-supply-chain-operations/>

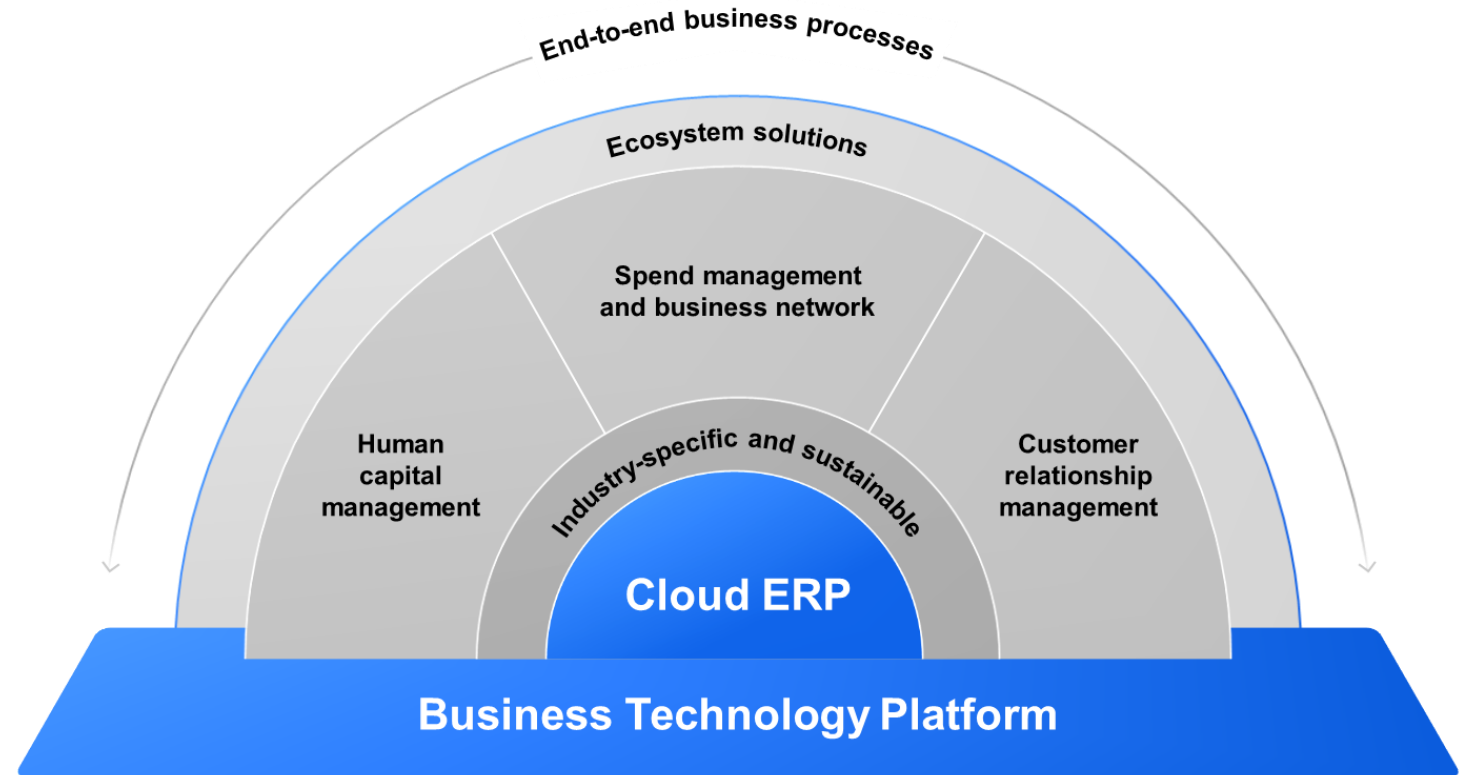
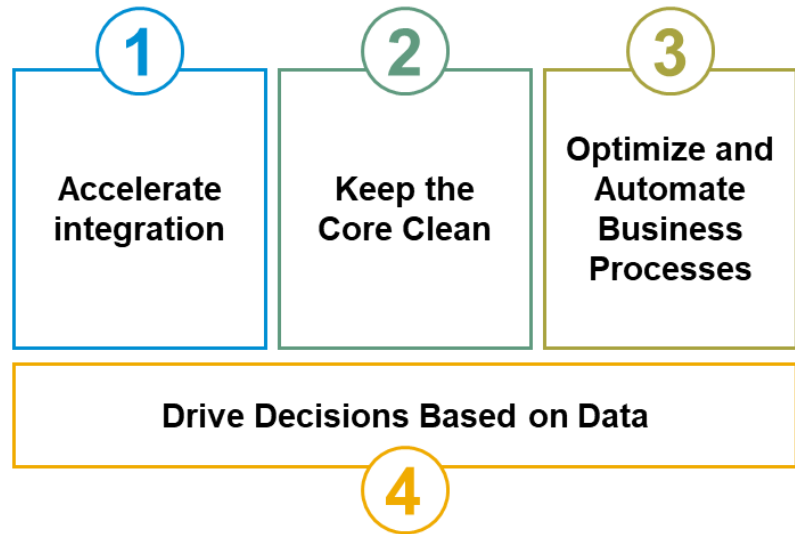
** <https://www.mckinsey.com/business-functions/operations/our-insights/a-road-map-for-digitizing-source-to-pay>

*** https://www.mckinsey.com/~media/McKinsey/Featured%20Insights/Digital%20Disruption/Harnessing%20automation%20for%20a%20future%20that%20works/MGI-A-future-that-works_Full-report.ashx

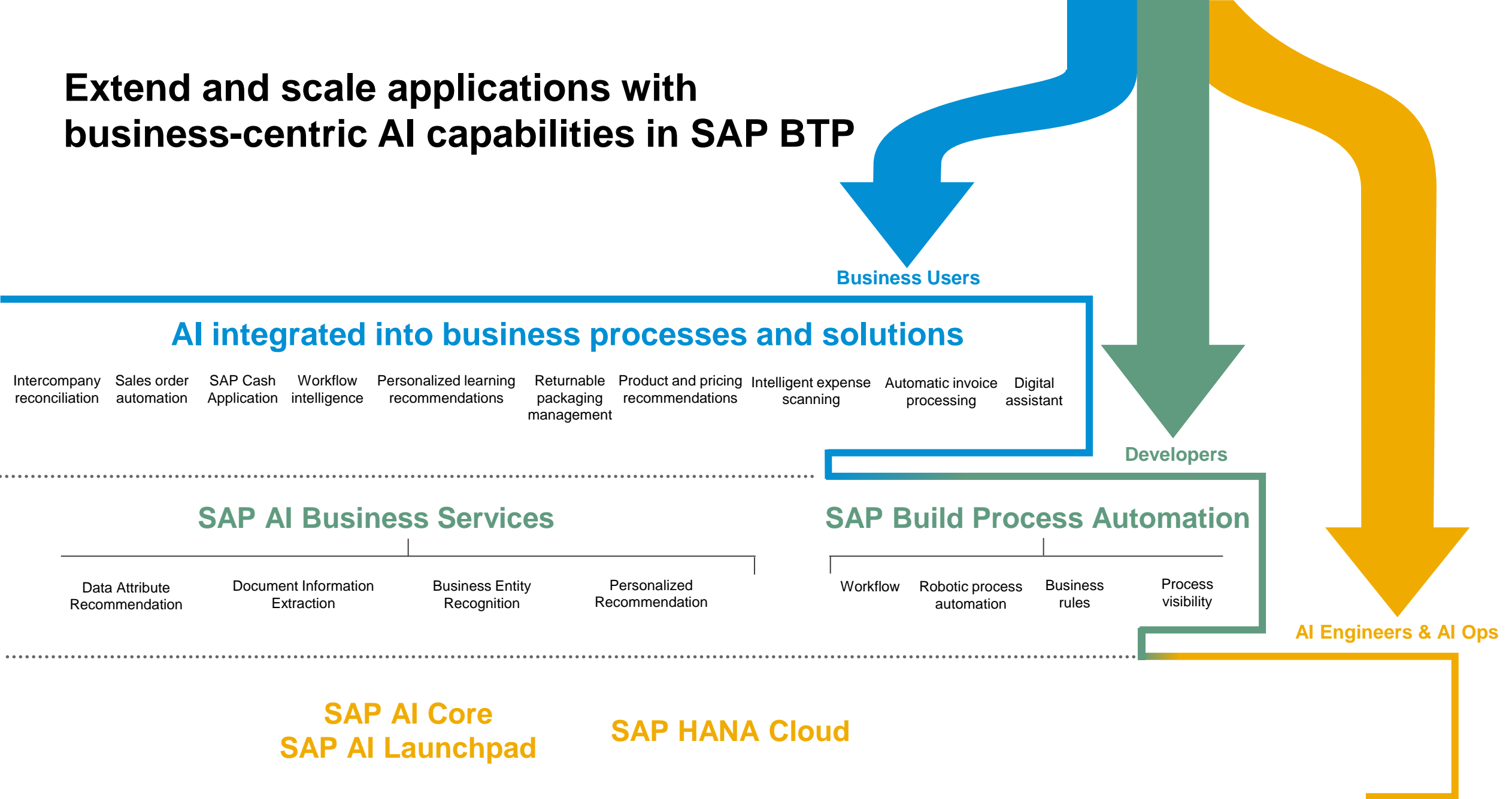
**Enable every
enterprise
to become an
intelligent,
sustainable
enterprise**



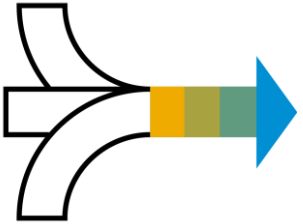
Value of the Business Technology Platform



Extend and scale applications with business-centric AI capabilities in SAP BTP



Automate & Optimize Business Processes with SAP AI Business Services



Add intelligence to your applications using AI models pretrained on business-relevant data, available on SAP BTP.

Business Document Processing



Business Entity Recognition

Detects and highlights named entities in unstructured text



Document Information Extraction

Automatically extracts information from unstructured documents and classifies them



Personalized Recommendation

Get accurate recommendations based on users' browsing history and/or item description



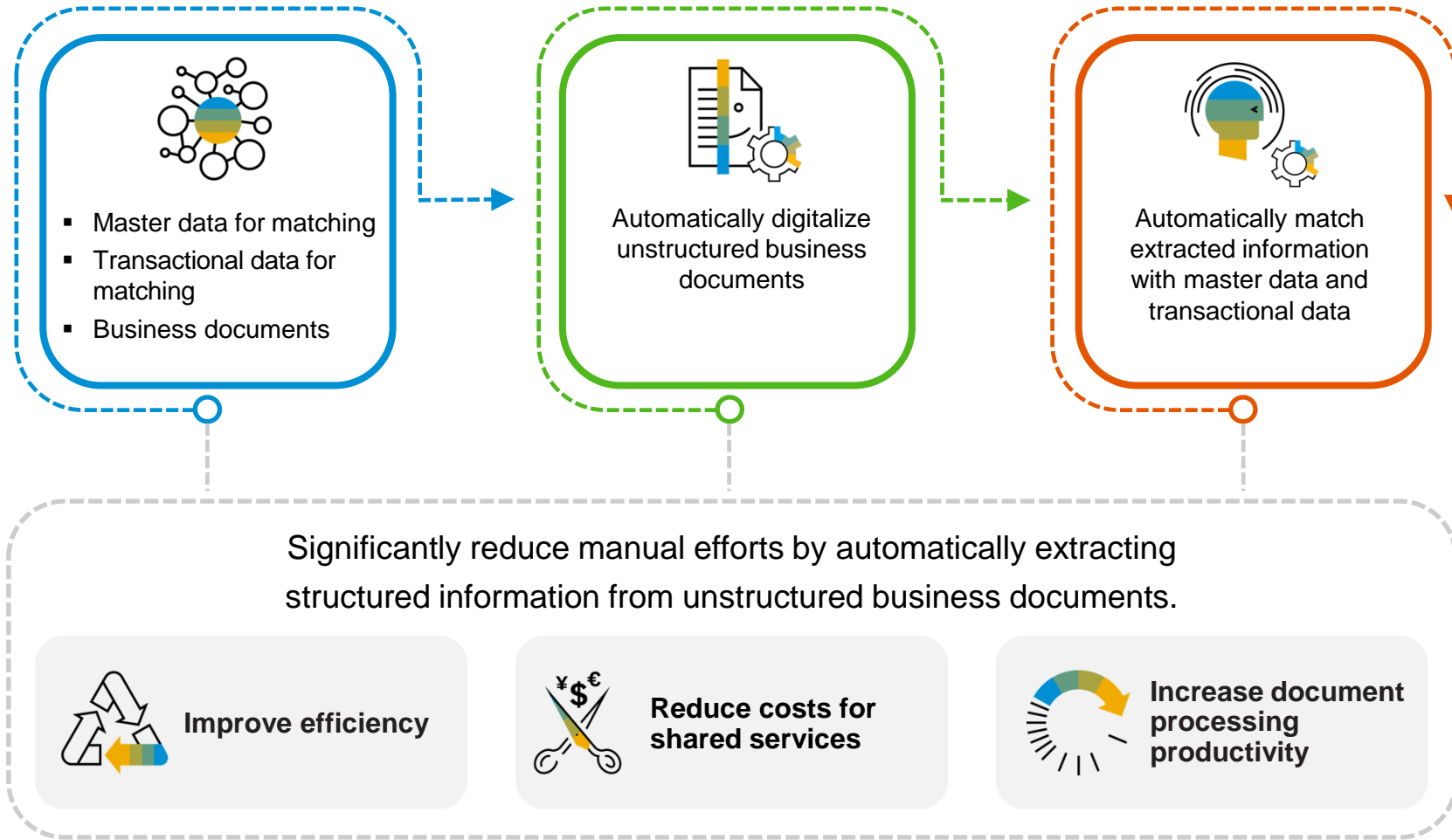
Data Attribute Recommendation

Perform classification and regression tasks

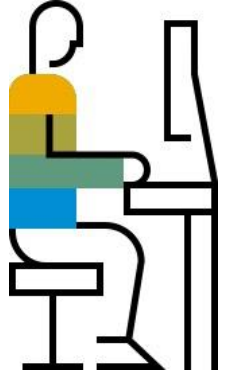
Available via CPEA and SAP Store
Available on SAP BTP Free Tier

Document Information Extraction

Extract structured information from unstructured documents and classify them



Problem: Large Amounts of Incoming business documents



John,
AP-Clerk

**Time2Go
Company**

Your Company
M. Max Apfel-Birne
Birnenstr. 24
54321 Birnenstadt

Contact:
Time2Go Company
Am Apfelbau 13
12345 Apfelstadt
Tel. +1134/43215
Date: 01.11.2013
Invoice n°: 123456
Customer n°: 0987

Invoice

Amount	Unit	Object	Price
1400	Pc.	Apples	\$1,684.-
120	Kg	Nuts	\$2.000
Total Amount			\$ 3,684.-
19% taxes incl.			

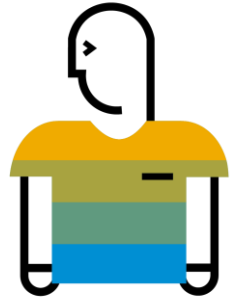
To pay until 11.12.2013

Time2Go Company
Am Apfelbau 13
12345 Apfelstadt

DE12 123412341234
Apfelbank
XYZ1234ZXY

Company	Time2Go Company
Supplier ID	009753
Invoice N°	123456
Amount	3684.00
Currency	USD
Date	2013-11-01
Position 1	Amount: 1400 Unit: PC Amount: 1684.00 Description: Apples
Position 2	Amount: 120 Unit: KG Amount: 2000.00 Description: Nuts

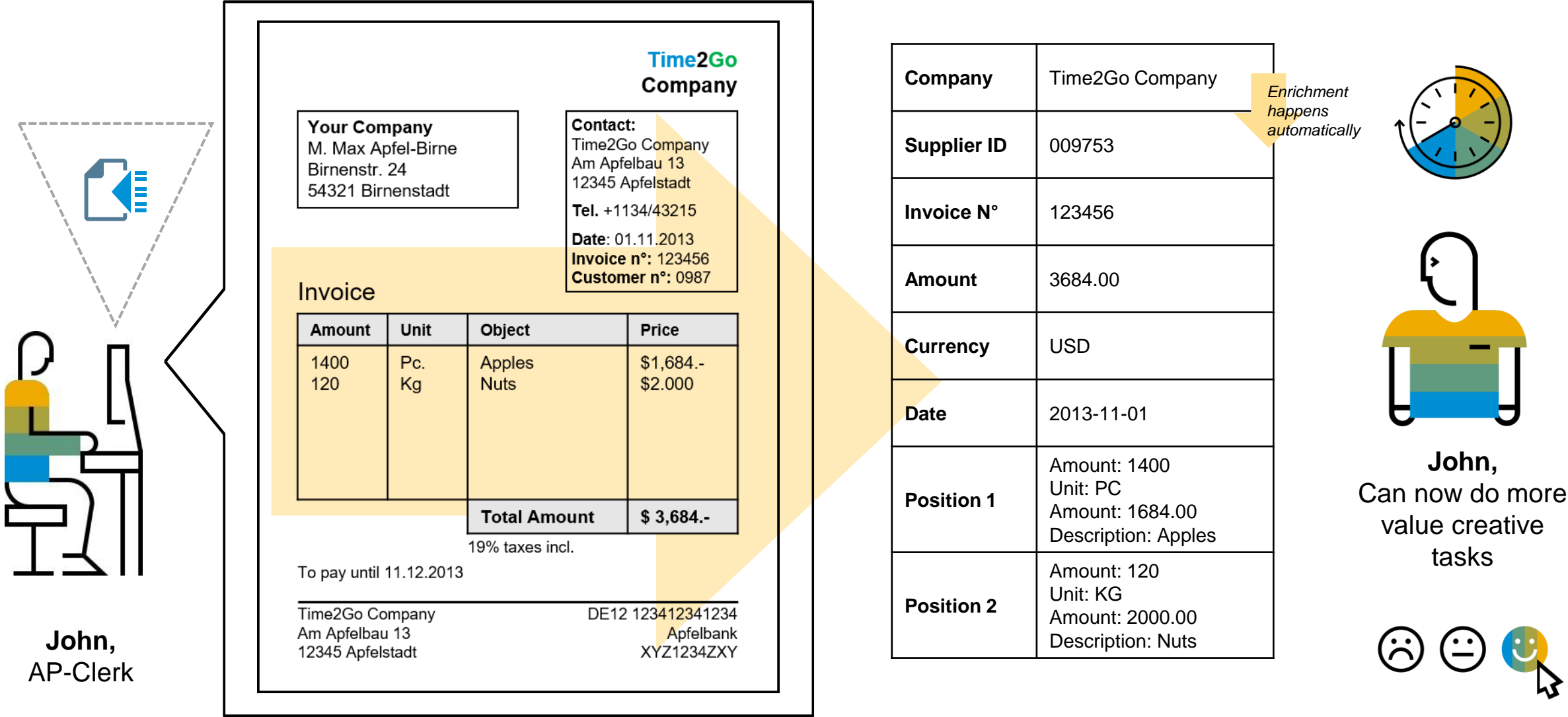
Enrichment
happens
manually



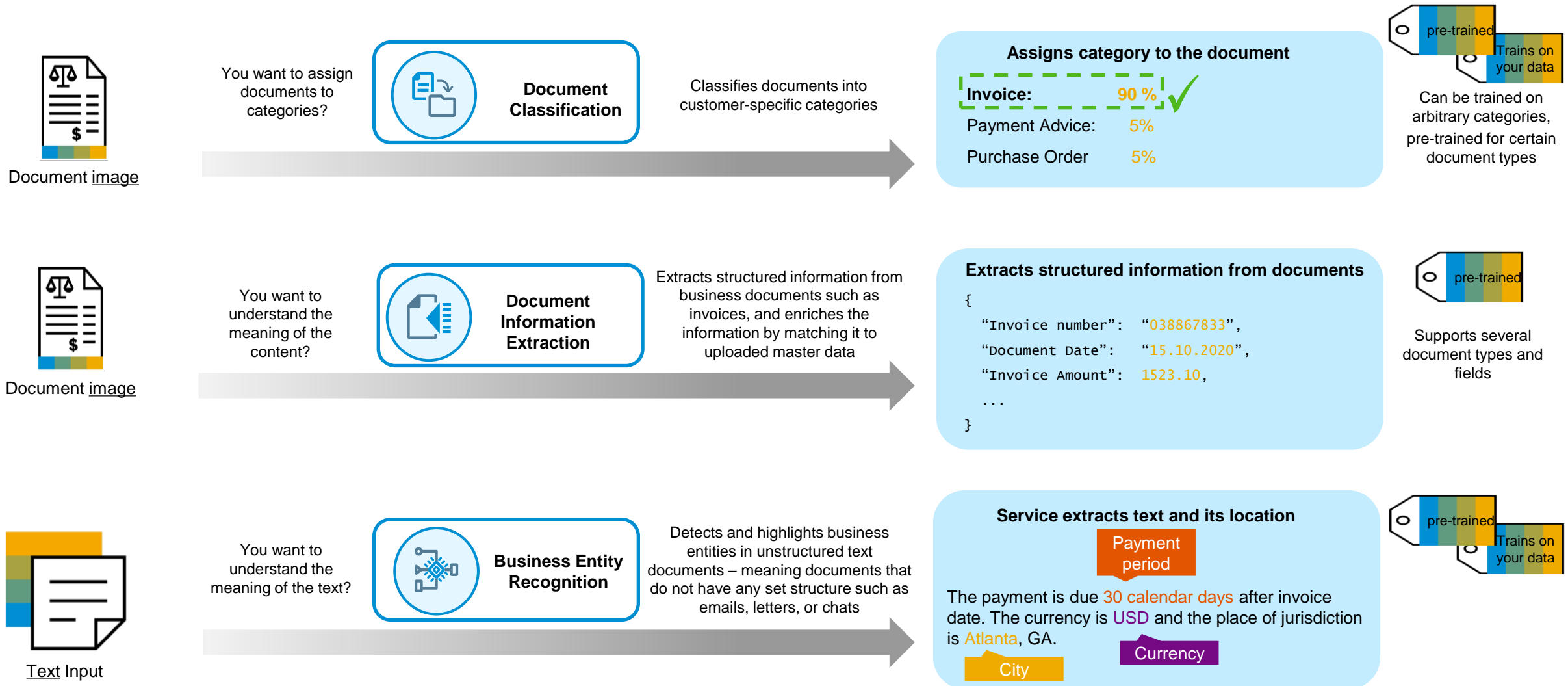
John,
spends much time
on searching and
matching the right
information



Solution: Document Information Extraction



Services for Business Document Processing



Document Information Extraction

Start today



Ready to Use

- Available under [Free Tier](#) option on SAP BTP
- Commercially available via **Cloud Platform Enterprise Agreement**, on **SAP Store** or as **Pay-as-you-go** model
- Available as **Test Demo & Development** for Partners
- Available on following Data Centers: EU10, EU11, JP10, US10, AP10

[SAP HELP
PORTAL](#)

[SAP DISCOVERY CENTER](#)



Natively Available

The service is integrated into variety of SAP standard products that you use already today:

- [SAP Concur Invoice Capture](#)
- [SAP Central Invoice Management for SAP S/4HANA Cloud](#)
- [SAP CashApplication](#)
- [SAP Business ByDesign](#)
- [SAP S/4HANA Cloud](#)
- [SAP Build Process Automation](#)
- ...and many more (see consumption options).

[SAP
COMMUNITY](#)

[CONSUMPTION OPTIONS](#)

Manage Payment Advises with Cash App

HYPERCOM AG

Lindenstraße
2 74214 Schöntal
DE

Payment Advice

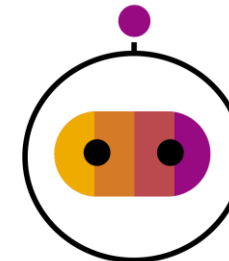
Document / Date
4 / 15/01/2018

Your account with us
10100001

Dear Sir/Madam,

We have cleared the items listed below with document 4.
We will credit the following bank account in 2 business days:
Bank Account:1133698
For inquiries please contact: treasury@domus1.com

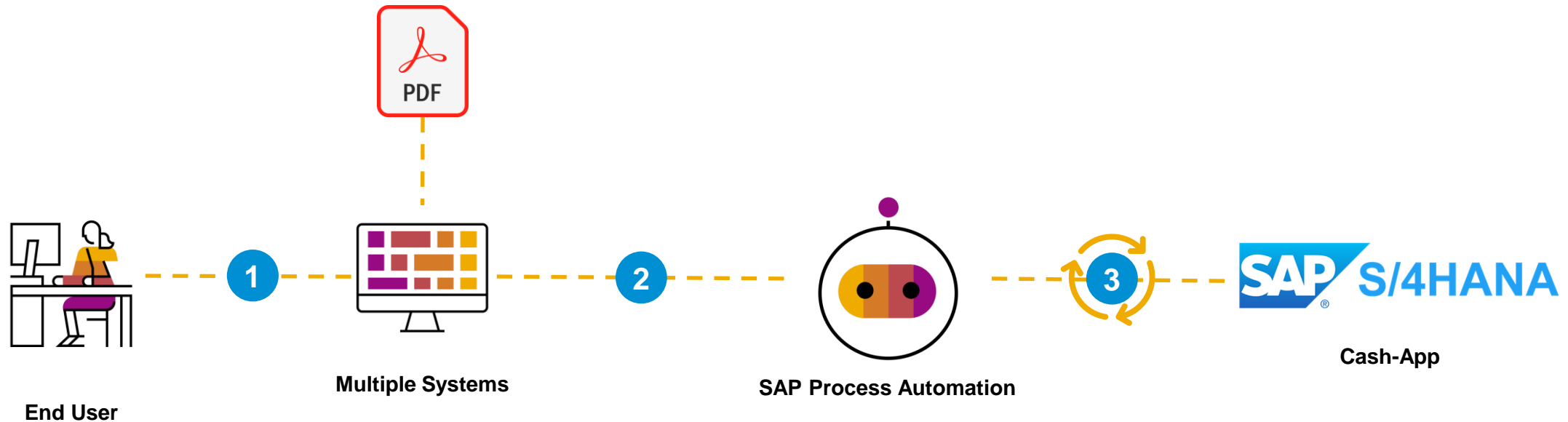
Document Number	Invoice Number	Invoice Date	Discount	Amount
1800000120	1800000120	10/10/2017	0.00	4,211.00
1800000101	1800000101	10/10/2017	0.00	692.00
1800000094	1800000094	10/10/2017	0.00	223.00
Total				5,126.00



SAP Process Automation

Manage Payment Advice

- [Demo](#)
- [Pre-built Bot](#)



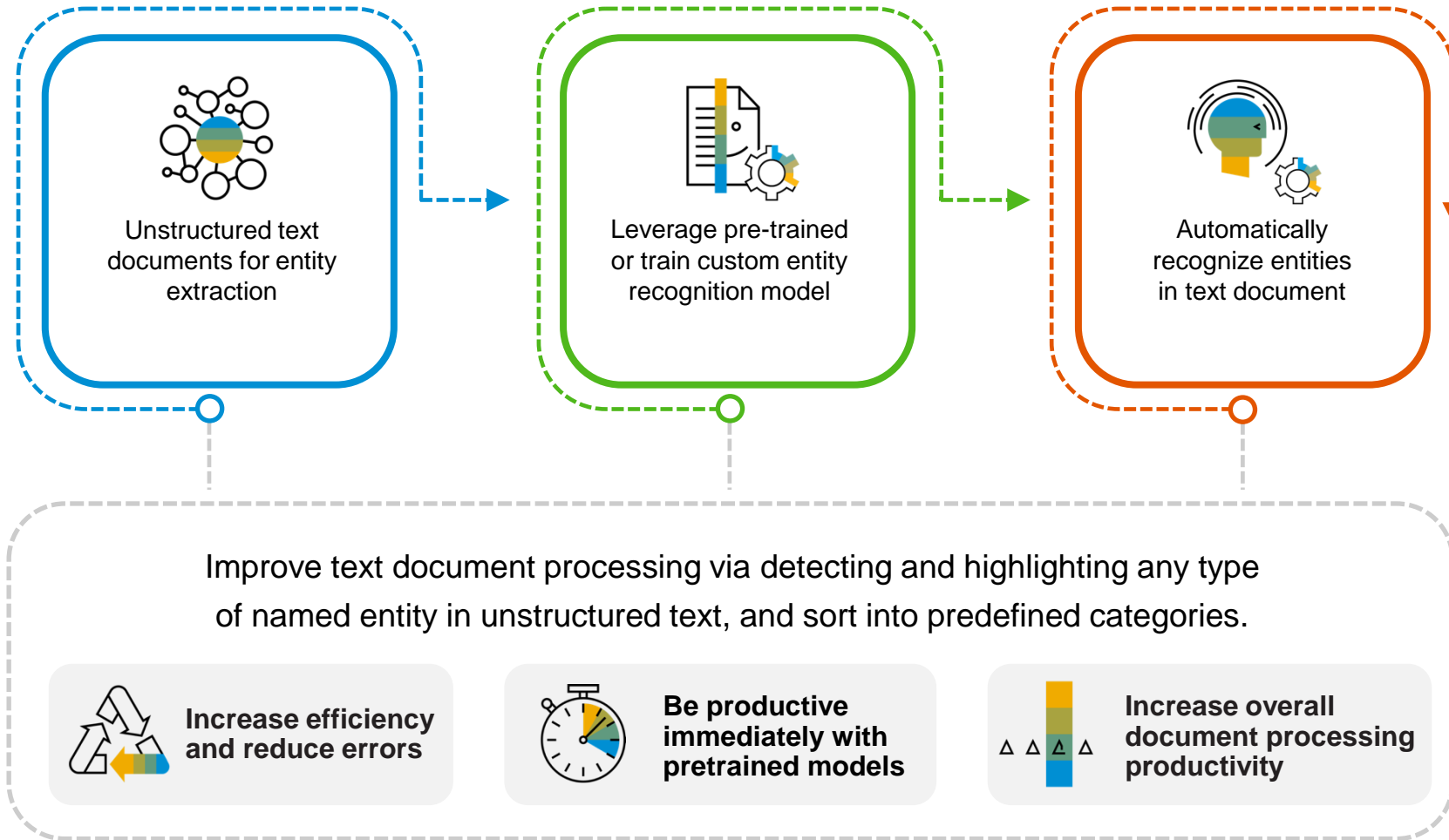
User has multiple PDF Documents from different sources

Bot is asking for feedback and allocates all relevant PDF's

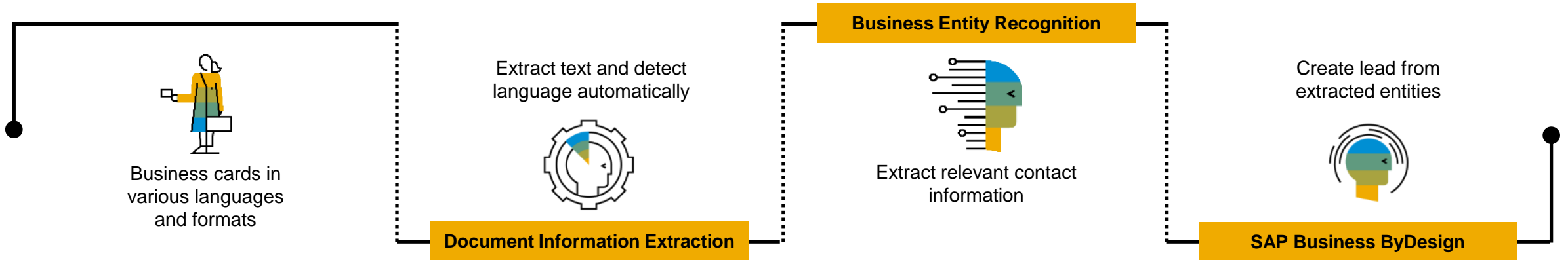
Bot navigates to Cash App and Uploads all Payment Advices

Business Entity Recognition

Detect and highlight any type of named entity in unstructured text



Intelligent lead capturing from business cards



Business Challenge

- Business cards collected at events or conferences need to be entered manually to capture leads
- Business cards typically come in various languages and formats
- Manual lead capturing might lead to errors and increases the processing time



Solution

Document Information Extraction

- Automatically extracts structured information from unstructured documents such as business cards

Business Entity Recognition

- Extract contact-relevant information via pre-trained business card model



Benefits and Value

- Reducing the manual work
- Speeding up the overall process
- Reducing extraction errors
- Focusing on value-creative tasks
- Immediately productive via pre-trained models

Pre-trained and custom training models

Business Entity recognition offers **pre-trained** models and the possibility to train **custom** training models

Pre-trained models



Use for **specific business problems** (e.g. extracting entities out of invoice headers)

Custom models



Train custom models for **any given type of entity** in any unstructured text

Overview about pre-trained training models

Email Business Entity

- Entities:
 - Vendor ID
 - Invoice number
- Languages:
 - DE
 - EN

Generic Entities

- Entities:
 - Person
 - Number
 - Date / Time
 - Job
 - Location
 - ...
 - Color
 - Distance
 - Duration
 - Language
 - Nationality
- Languages:
 - DE
 - EN
 - ES
 - FR

Address Entities

- Entities:
 - Customer name
 - City
 - Country
 - Street
 - Postal code
 - ...
- Languages:
 - DE
 - EN

Invoice Header

- Entities:
 - Sender address
 - Sender name
 - Order date
 - Note number
 - Payment terms
 - PO reference
 - ...
 - Total amount
 - Currency
 - Description
 - Tax rate
 - Tax ID
 - Bank account
- Languages:
 - DE
 - EN
 - ES
 - FR

Extraction of **service-related entities** from **emails** or **service requests**

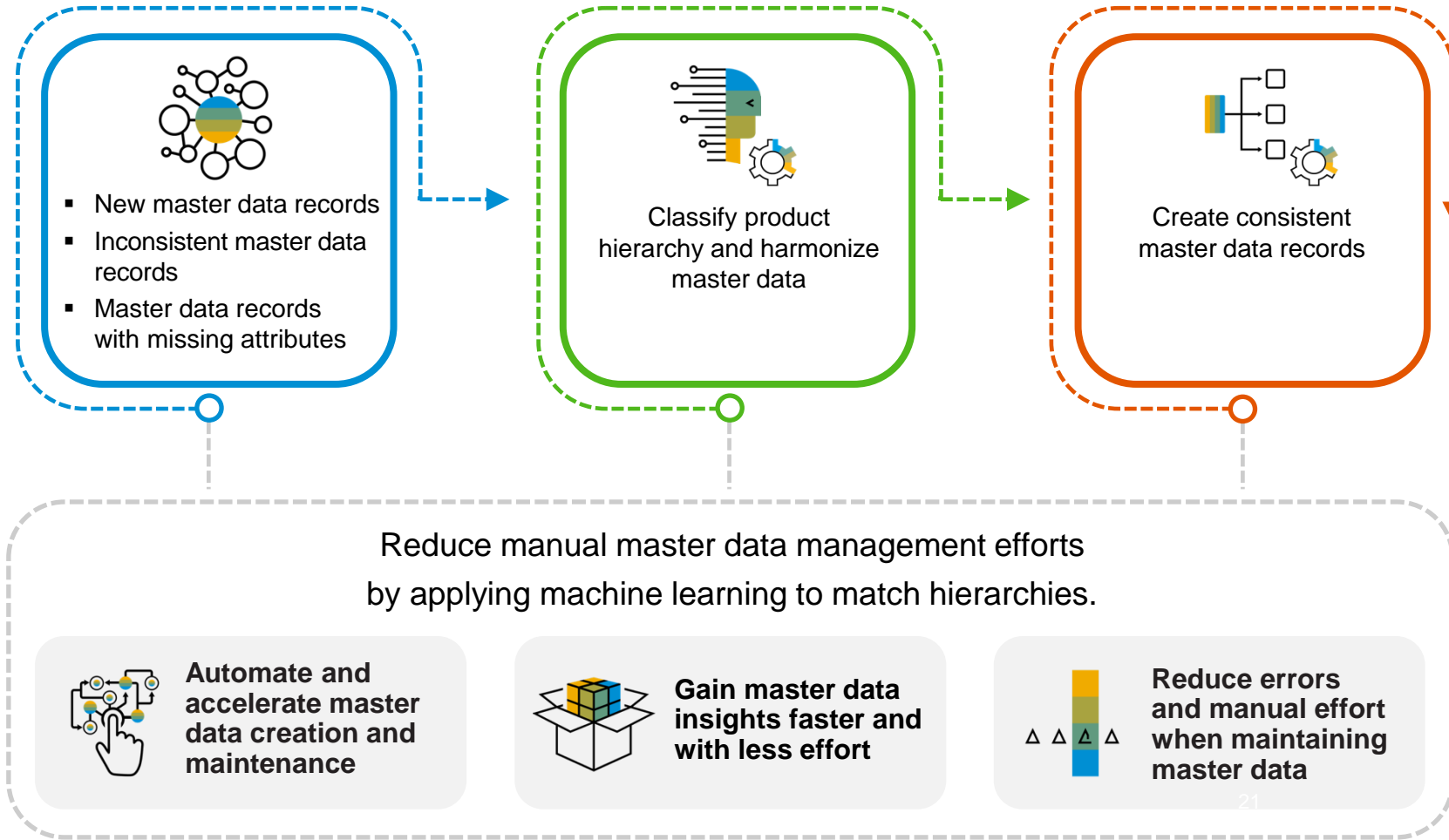
Extraction of **generic entities** from **any text** (e.g. emails, chats, business documents)

Extraction of **address entities** from any text containing address data

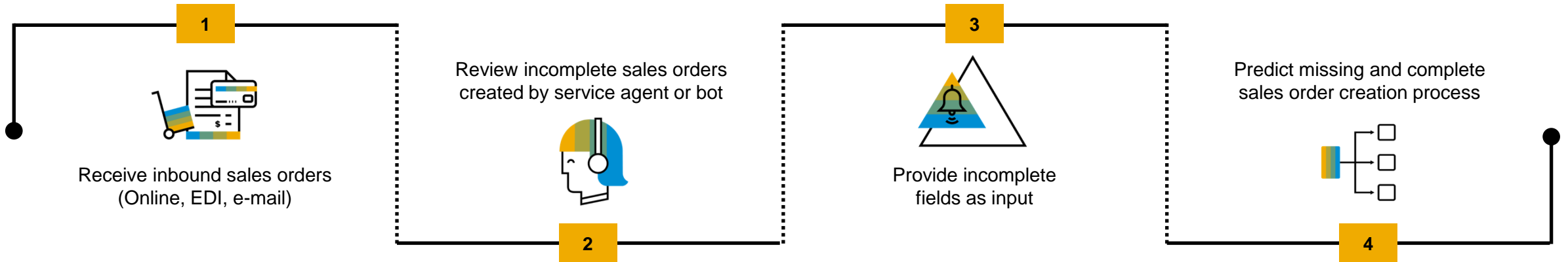
Extraction of **invoice-related entities** from **text-based invoices**

Data Attribute Recommendation

Classifies and predicts structured data fields



Sales Order Auto Completion



Business Challenge

- Incomplete and overdue sales orders due to missing information
- High manual effort needed to retrieve missing information
- Delay in order fulfillment in the order-to-delivery process



Solution

Data Attribute Recommendation

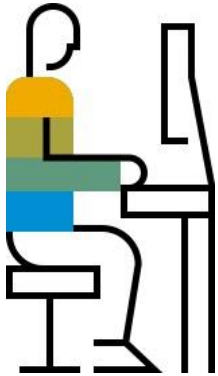
- Feeds incomplete fields as input to service
- Offers the potential to combine with rule-based procedures
- Classifies sales order exceptions for automated processing



Benefits and Value

- Reduced manual efforts for order completion significantly
- Expedited overall sales order processing
- Leveraged extensive cost-saving potential

Business Challenge - Matching Information done Manually

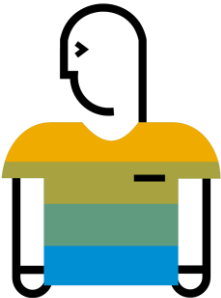


Bob,
Master Data
Team

Material Table

Description	Manufacturer	Price	Category	Subcategory
1875 W Conair Hair Dryer	Conair	19.99	Health, Fitness & Beauty	Personal Care & Beauty
40x to 1000x - LED Illumination - Monocular Head	Celestron	369.99	Cameras & Camcorders	Binoculars, Telescopes & Optics
Amazons 6" Paperwhite display	Amazon	289.99	Computers & Tablets	E-Readers & Accessories
Yellow - Laser - 1500 Page - 1 Each	Brother	50.99	Connected Home & Housewares	Office & School Supplies
Take the fight to the next level	Activision	19.99	Video Games	Xbox 360
Compatible with select electronic devices	alkaline chemistry	7.99	Connected Home & Housewares	Housewares
From our expanded online assortment; compatible with most 1989-2000 Ford, Lincoln and Mercury vehicles	Metra	16.99	Car Electronics & GPS	Car Installation Parts & Accessories

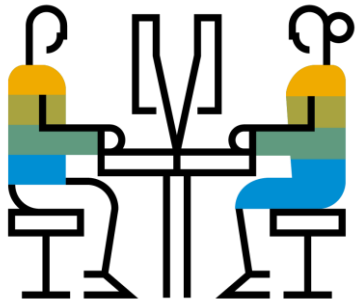
Manual
matching
and
insertion of
information



Bob,
spends much time
on repetitive
tasks



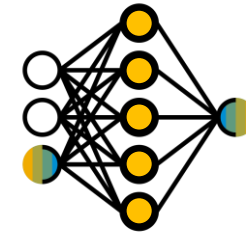
AI Approach - Train a model with historical / labelled data



Material Table

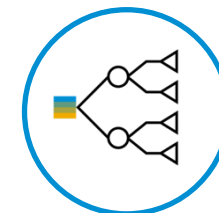
Description	Manufacturer	Price	Category	Subcategory
1875 W Conair Hair Dryer	Conair	19.99	Health, Fitness & Beauty	Personal Care & Beauty
40x to 1000x - LED Illumination - Monocular Head	Celestron	369.99	Cameras & Camcorders	Binoculars, Telescopes & Optics
Amazons 6" Paperwhite display	Amazon	289.99	Computers & Tablets	E-Readers & Accessories
Yellow - Laser - 1500 Page - 1 Each	Brother	50.99	Connected Home & Housewares	Office & School Supplies
Take the fight to the next level	Activision	19.99	Video Games	Xbox 360
Compatible with select electronic devices	alkaline chemistry	7.99	Connected Home & Housewares	Housewares
From our expanded online assortment; compatible with most 1989-2000 Ford, Lincoln and Mercury vehicles	Metra	16.99	Car Electronics & GPS	Car Installation Parts & Accessories

Training data

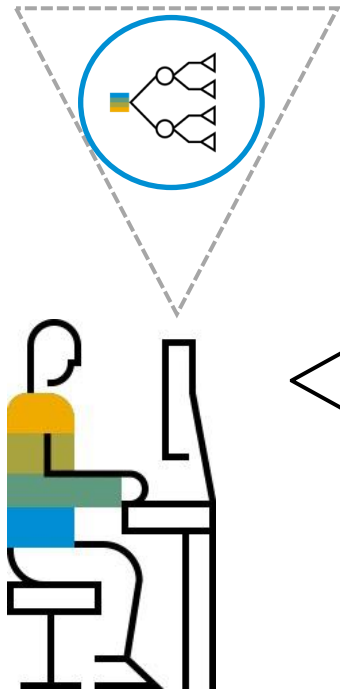


Data Attribute Recommendation

model trained



Solution – Automation with Data Attribute Recommendation

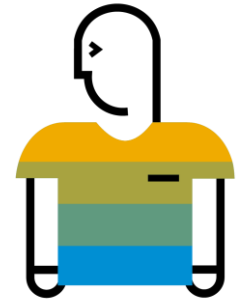


Bob,
Master Data
Team

Material Table

Description	Manufacturer	Price	Category	Subcategory
1875 W Conair Hair Dryer	Conair	19.99	Health, Fitness & Beauty	Personal Care & Beauty
40x to 1000x - LED Illumination - Monocular Head	Celestron	369.99	Cameras & Camcorders	Binoculars, Telescopes & Optics
Amazons 6" Paperwhite display	Amazon	289.99	Computers & Tablets	E-Readers & Accessories
Yellow - Laser - 1500 Page - 1 Each	Brother	50.99	Connected Home & Housewares	Office & School Supplies
Take the fight to the next level	Activision	19.99	Video Games	Xbox 360
Compatible with select electronic devices	alkaline chemistry	7.99	Connected Home & Housewares	Housewares
From our expanded online assortment, compatible with most 1989-2000 Ford Lincoln and Mercury vehicles	Metra	16.99	Car Electronics & GPS	Car Installation Parts & Accessories

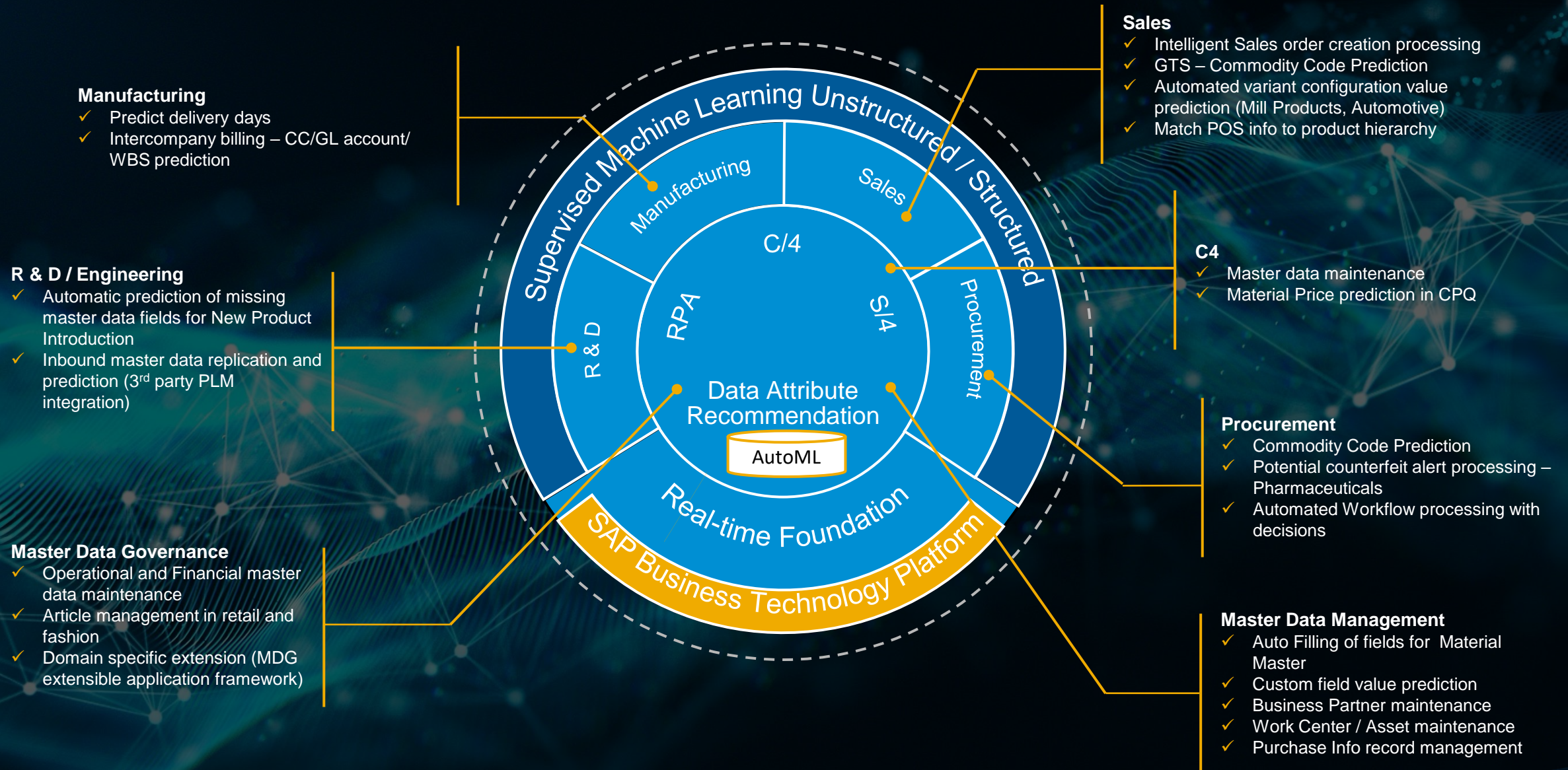
Predictions
for
customer
specific
fields



Bob,
Can now do more
value creative
tasks

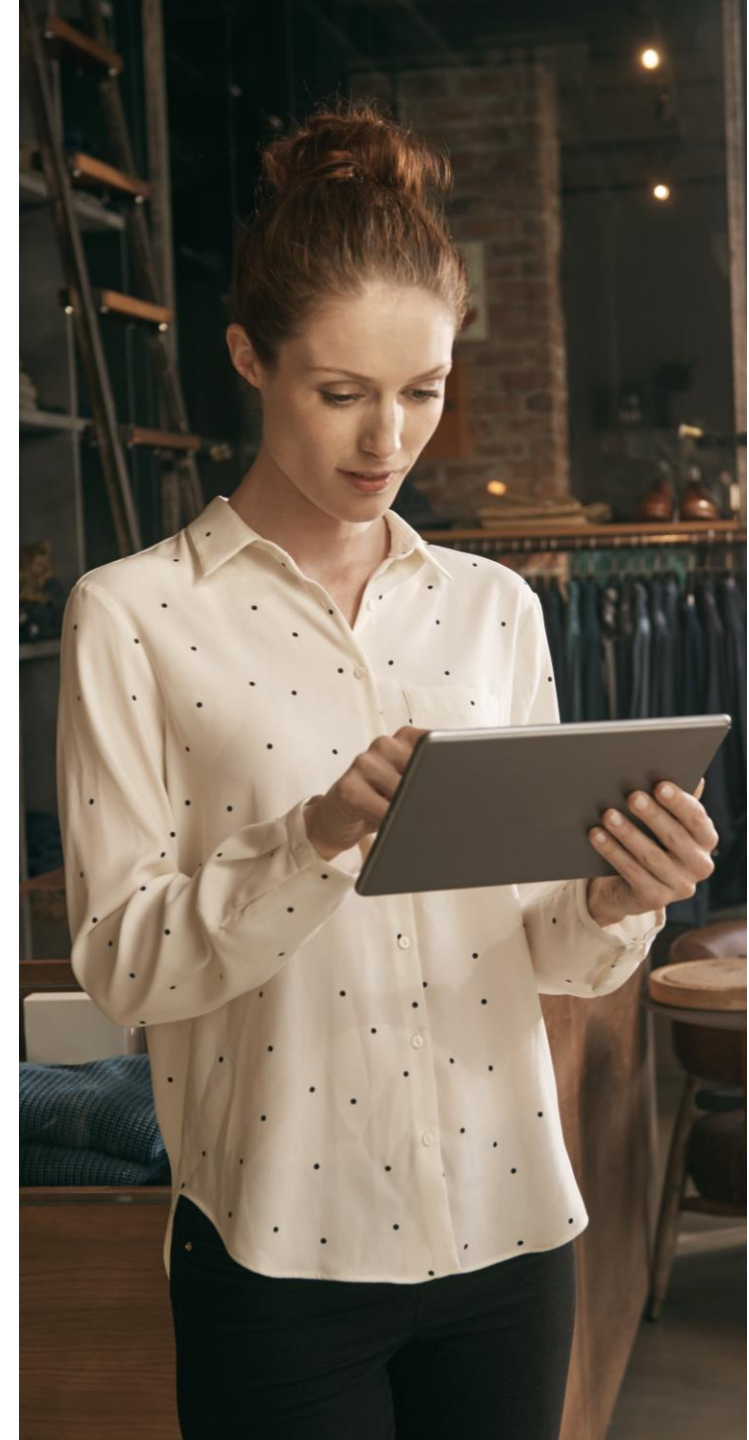
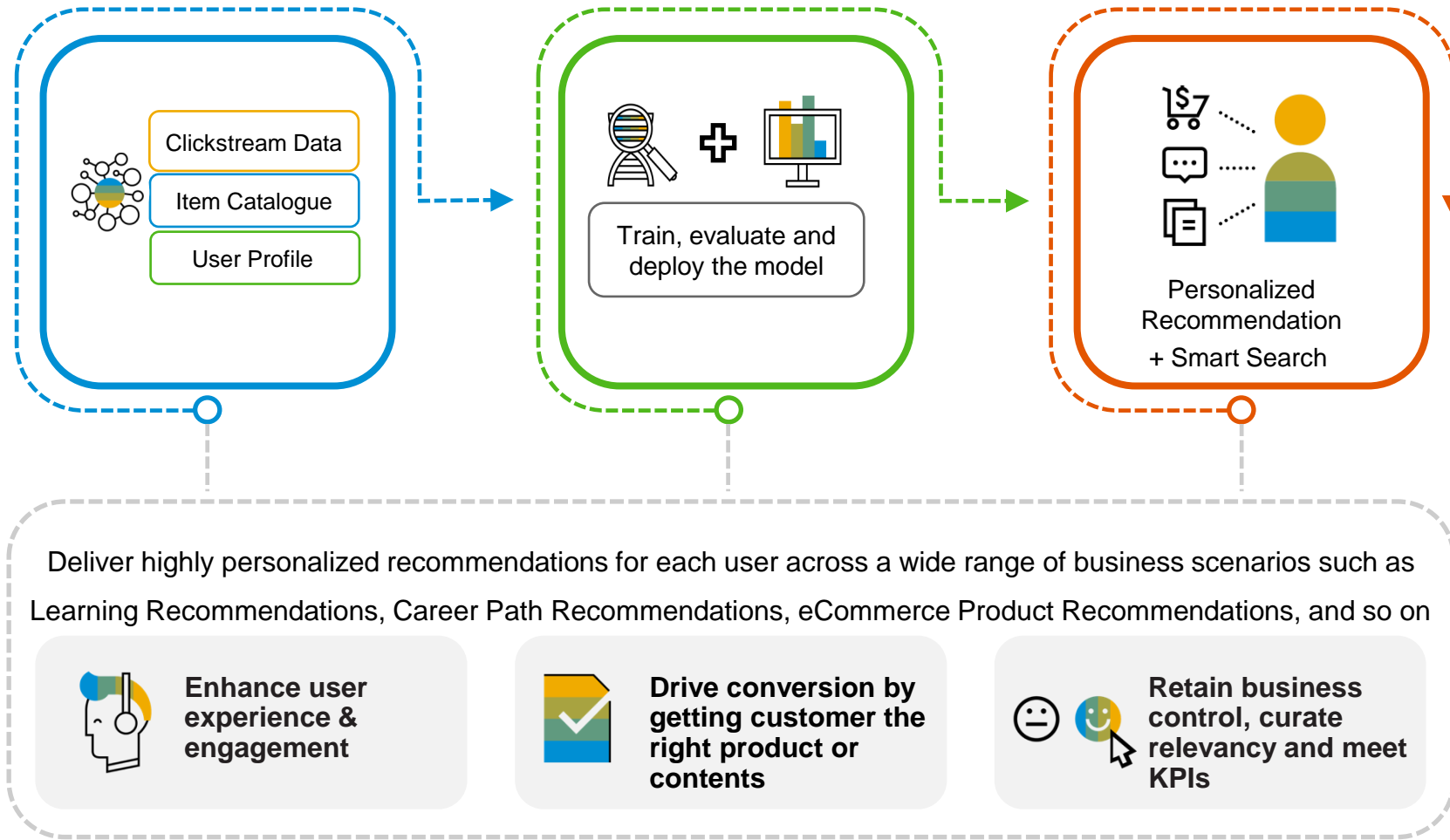


Intelligent Master Data and Transactional Data Enrichment using Data Attribute Recommendation

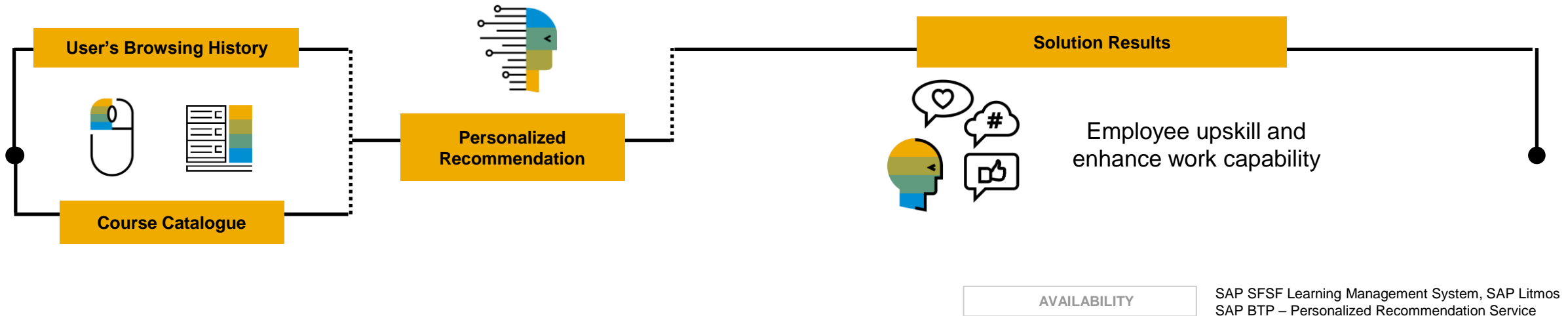


Personalized Recommendation

Draw insights from historical user behavior and item metadata to deliver highly personalized recommendations



Learning Recommendations



Business Challenge

Employees struggle with finding relevant courses

- Overwhelming volume of information that makes it difficult to notice and keep track of useful information
- Lack of effect tools that makes it difficult for the employees to find the most useful information



Solution

Personalized Recommendation

- Connects employees with personalized learning beyond traditional course catalogues to fit their learning goals and situation.



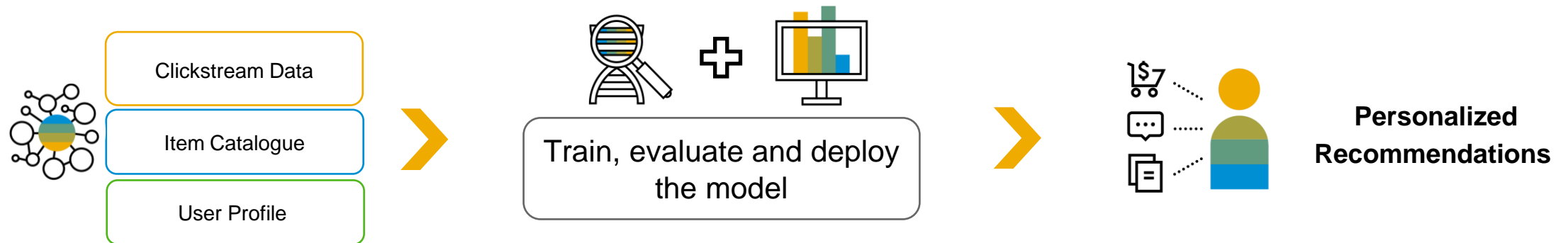
Benefits and Value

- Connect employees with personalised learning to fit their learning goals and situation, enabling them to upskill and have personal growth.
- Make better use of vast amounts of relevant and current learning content available
- Talent development to build a better workforce
- Help organizations create a culture of learning

Personalized Recommendation

How does it work

Personalized Recommendation **draws insights from historical user behavior and item metadata** to deliver highly personalized recommendations for each user across a wide range of business scenarios.

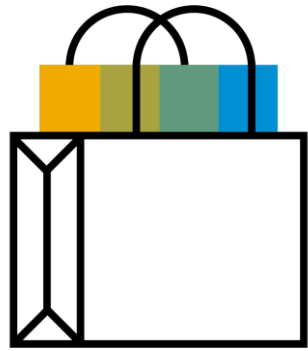


Personalized Recommendation

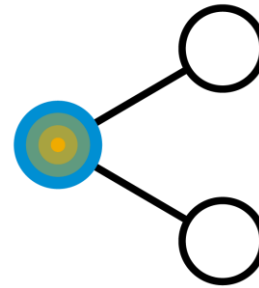
Recommendation Scenarios



Next-Click



Next-Sell



**Content
Recommendation**



Smart Search

Customers Are Realizing Their Potential with SAP AI Business Services

City of Hamburg
Government

+2.7 million

documents
automatically evaluated
and classified

Villeroy & Boch
Consumer Products

91%

of 3,000 incoming emails
per year automated

Telefónica S.A.
Telecommunications

77%

of talent completed profiles,
enabling intelligent matching of
candidates to positions

**Aspen
Pumps Limited**
Industrial machinery

350 hours

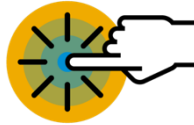
saved each month by reducing
repetitive and manual
administrative tasks

SAP AI Business Services Key Takeaways



Rapid time to value

Speed value creation with enterprise-ready services.



Innovation support

Reinvent existing business processes with new technologies.



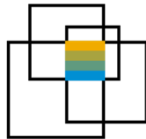
First step on your ML-based journey

Get started by automating and optimizing business processes.



Generic usability

Solve concrete business problems in various business scenarios across all industries.



Powerful integration

Integrate AI capabilities with both SAP and third-party solutions.



Expertise

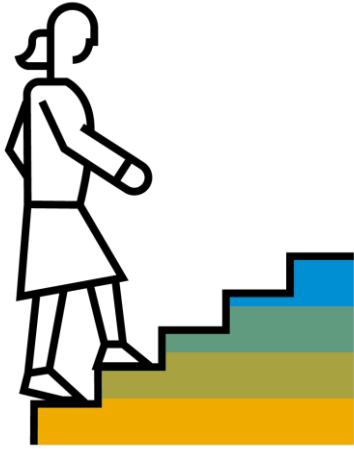
Take advantage of solutions based on best practices supported by SAP and our customers.



Simple access to and payment for service

Get up and running quickly using CPEA and pay only for what you need.

Get Started with SAP AI Business Services Today



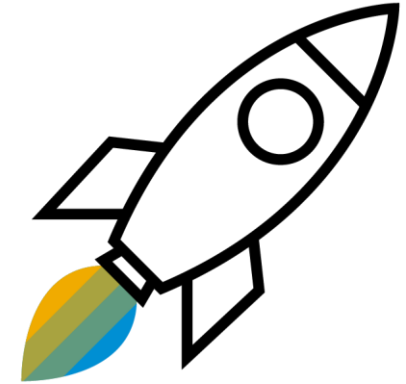
First steps

- [Visit SAP.com](#)
- [Read this blog post](#)
- [Read our documentation](#)
- [Follow our openSAP course](#)



Stay in touch and learn

- [SAP Community \(including use cases\)](#)
- [Q&A](#)
- [Roadmap](#)
- [Tutorials](#)
- [LinkedIn & YouTube](#)



Productive usage

- [SAP BTP Free Trial](#)
- [SAP Store](#)
- [SAP Discovery Center](#)
- [Estimator Tool](#)

Thank you.

Contact information:

Manuel Namyslo
manuel.namyslo@sap.com



Manuel Namyslo

Solution Advisor für SAP Business Technology Platform

SAP Deutschland SE & Co. KG

Hasso-Plattner-Ring 7
69190 Walldorf, Germany

T +49 1752957360

E manuel.namyslo@sap.com

