

## Building the Business Case for Integration

2 July 2021



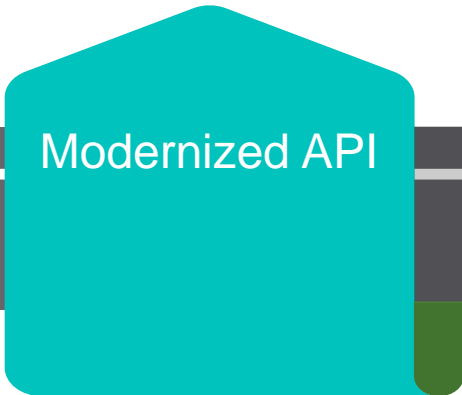
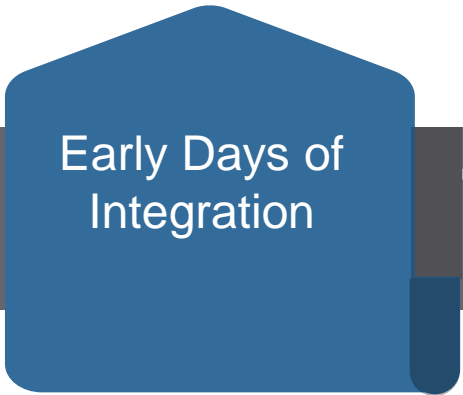
# Evolving Integration Landscape



- Point to Point
- Application Link Enabling (ALE)
- Simple Object Access Protocol (SOAP)
- On premise systems/application

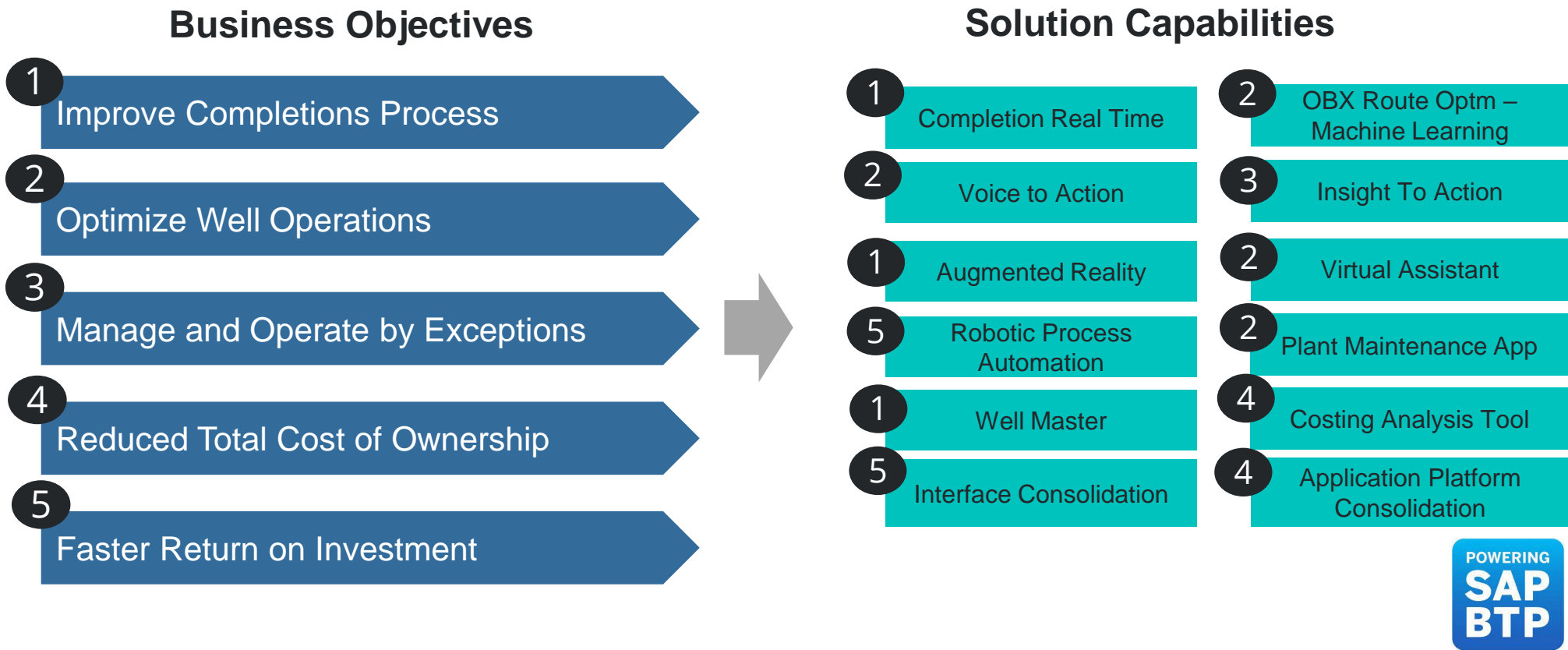
- Process integration
- Data integration
- Mobile integration
- Data streaming
- Workflows/Business rules
- Event Processing
- RPA
- Chatbot

- Self-defining and self-healing integration
- AI/ML to predict future integration needs
- Self-service, low code, no code.
- Unified integration
- Voice Interface
- Harmonized experience
- APIs enable automation and artificial intelligence (AI)
- Embedded Intelligence
- Flexible extensions



# Business Case - Digital Oil Field

Build a platform with an objective to digitize key field operations and improve process efficiency

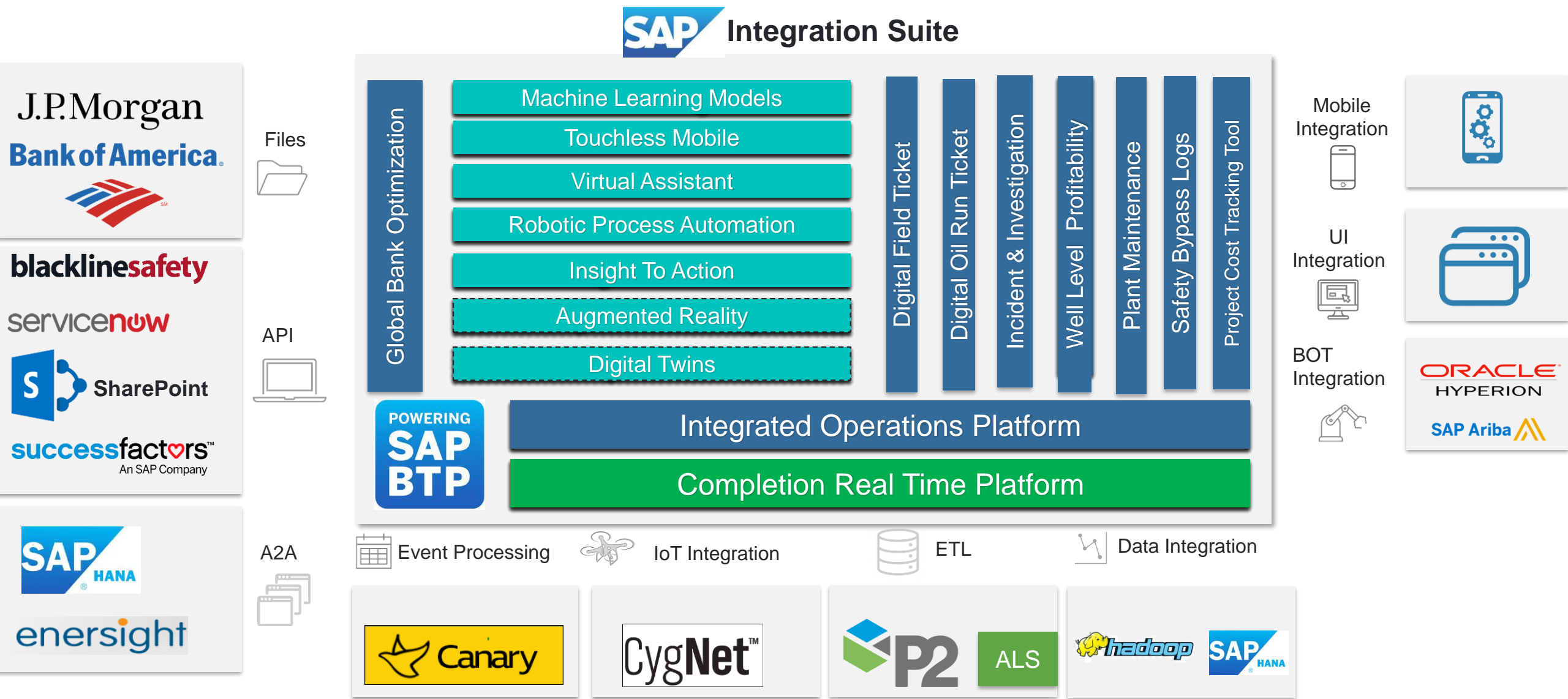


**12%** Cycle time reduction

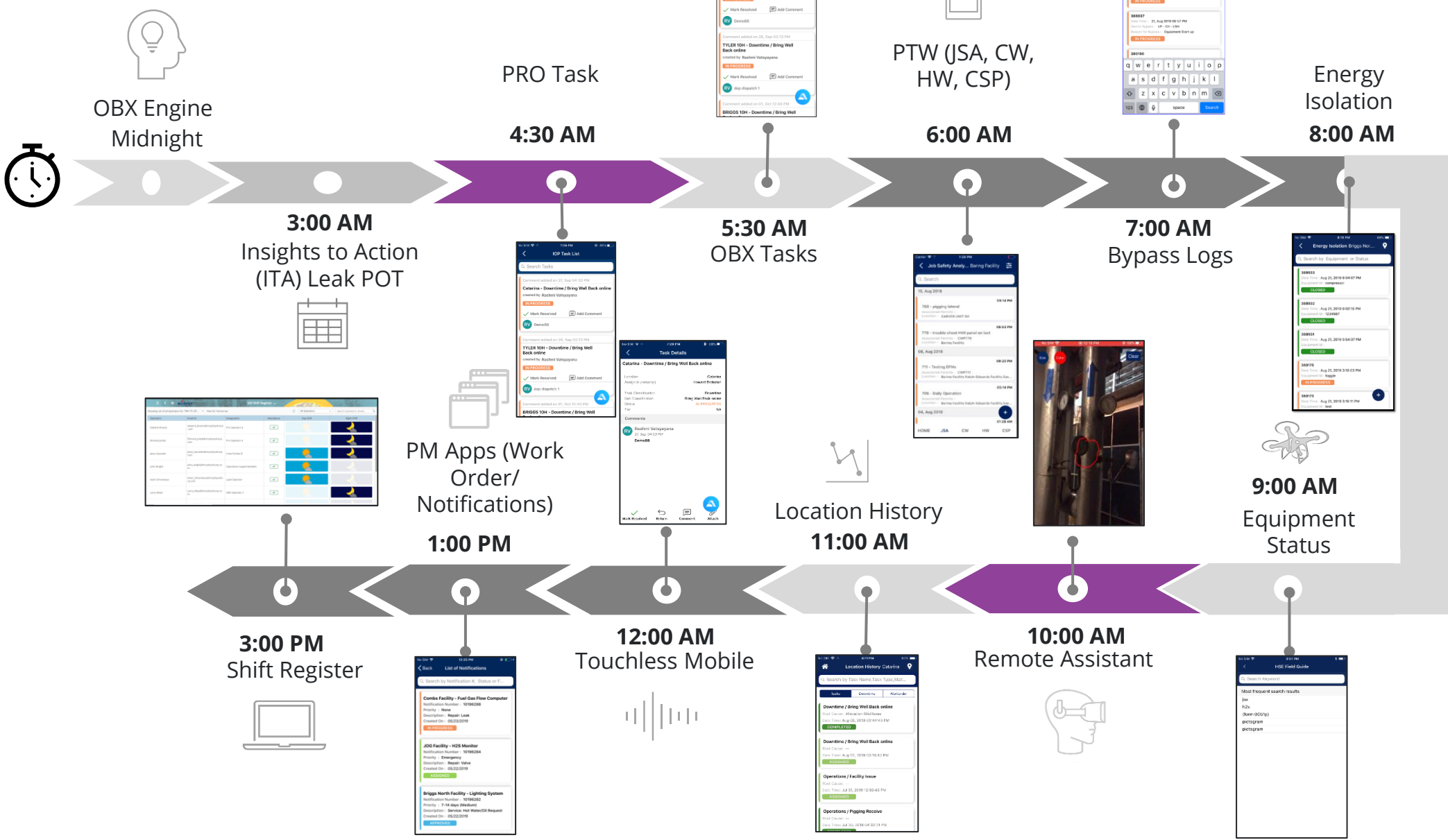
**15%** Improved Productivity

**10%** Improved Health and Safety

# Leveraging SAP BTP and Integration Suite and multitude of non-SAP systems and applications for building the Next Generations Digital Oil Field

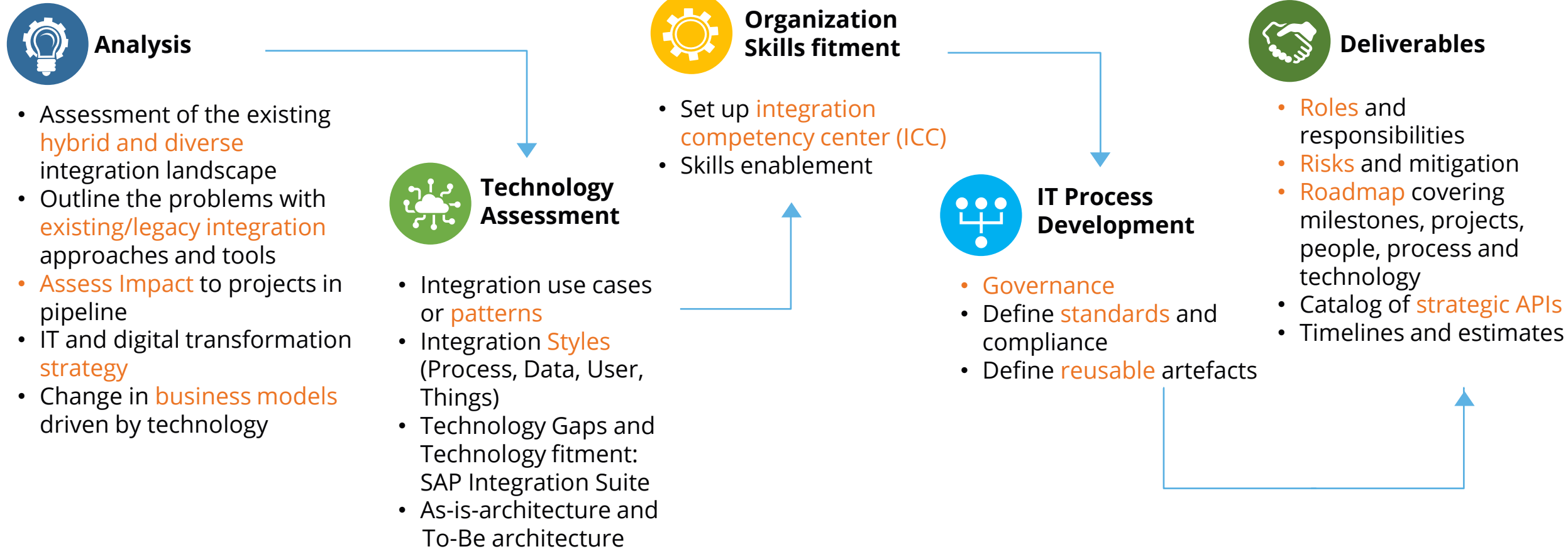


# Next Gen: Day in a Life for Operators



# Our Integration Strategy and Roadmap

*Aligned with SAP's Integration Strategy for the Intelligent Enterprise*



**Aligned with SAP ISA-M**

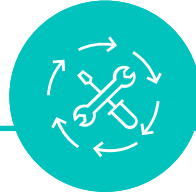
# Getting started with Incture

*Simplifying Integration with a Systematic Approach*



## Advisory

- Integration Strategy & Roadmap
- Process Excellence
- Landscape discovery & assessments
- Rationalization & Optimization
- Landscape consolidation
- Integration Competency Center (ICC) Setup



## Implementation

- Integration (On-Premise & iPaaS)
- Data, Process, User and Things Integration
- Process Driven Applications
- Operate ICC
- Upgrades & Migrations
- A2A and B2B Interface – System Migration & Implementations



## Managed

- Application Maintenance
- Platform Support
- Transition Management
- Central Monitoring & Incident Management

# Packaged Service: SAP Integration Suite Starter Pack

## Acceleration to Digital Adoption



### Customer Triggers

Customers looking for :

- Integration Roadmap/Strategy and Faster Digital Adoption
- Middleware Migration
- Platform Consolidation
- Data Lake Initiatives
- Lower TCO



### About Starter Pack

We help customers build the Intelligent Enterprise by integrating SAP applications and non-SAP applications using elements of the SAP Cloud Platform Integration Suite.

- Customers will learn:
  - How to safeguard SAP Cloud Platform Integration through safeguarding, security and monitoring content
  - Accelerate 3rd party connectivity through SAP Cloud Platform Integration and SAP Cloud Platform Open Connectors



### Relevant Industries & LOB

- **Industries:** Oil & Gas, CPG, Discrete Manufacturing, Pharmaceuticals, Utilities, Retail
- **LOB:** Sales, Marketing, Supply chain and Procurement, HR



### Pre-requisites

- Access to SAP Cloud Platform Integration tenant provisioning



### Resources

- SAP team: 1 SAP expert, 1 Focus Advisor
- Knowledge Transfer, Documentation, Best Practices and feedback
- Guidance and expertise to help customers implement specific integration scenarios through SAP Cloud Platform Integration



### Deliverables

- Custom integration flows
- Standard integration\* flows(includes dependent value mapping)



### Data Sources

- SAP S/4 HANA
- SAP SuccessFactors
- SAP HANA
- SAP BW/BO Universe
- Non – SAP data

<https://incture.com/packaged-services/>

# Register now for the half day complimentary assessment services

If you would like to take advantage of the half day complimentary assessment services worth \$4000USD, you can click on the link and use this promo code given below:

**PROMO CODE:** CRM-PM21-SIP-IEWEBININC

REGISTER

Follow us



## About Incture

Incture is one of the leading providers of digital applications, products, and digital engineering solutions on SAP® Business Technology Platform. Cherrywork® is a comprehensive extensions suite for SAP customers delivering packaged business value with agility and at scale to address evolving business requirements.

Incture, Cherrywork and other Cherrywork applications are registered trademarks of Incture Technologies Private Limited.

**For more details, please contact us:**  
[info@incture.com](mailto:info@incture.com)

