



Intelligent Enterprises are Integrated Enterprises

# Journey to SAP Integration Suite

EXTERNAL

# What we'll discuss



Why SAP Integration Suite?



What is SAP Integration Suite?



**Move to SAP Integration Suite**



**Integrations for RISE**

# Move from Process Orchestration to SAP Integration Suite

## ASSESS

1

Assess your  
Integration Landscape

[Integration Value Calculator](#)

[SAP Integration Solution Advisory Methodology](#)

[Integration Flow Design Guidelines](#)

[Future-proof Integration Strategy](#)

3

Easy Steps

## TRANSFORM

2

Start the  
Transformation  
Journey

[Accelerate Using Prebuilt Integrations from SAP API Business Hub](#)

[Leverage APIs and Events](#)

[Secure the Cloud](#)

## MOVE

3

Complete the  
Transformation

[Interface Migration](#)

[Connectivity Migration](#)

[Manage Security](#)

[Error Handling & Logging](#)

[Interface Governance](#)

# Accelerators for Integration Projects

70% of customer integrations are to third-party systems

Fully Maintained by SAP

2100+

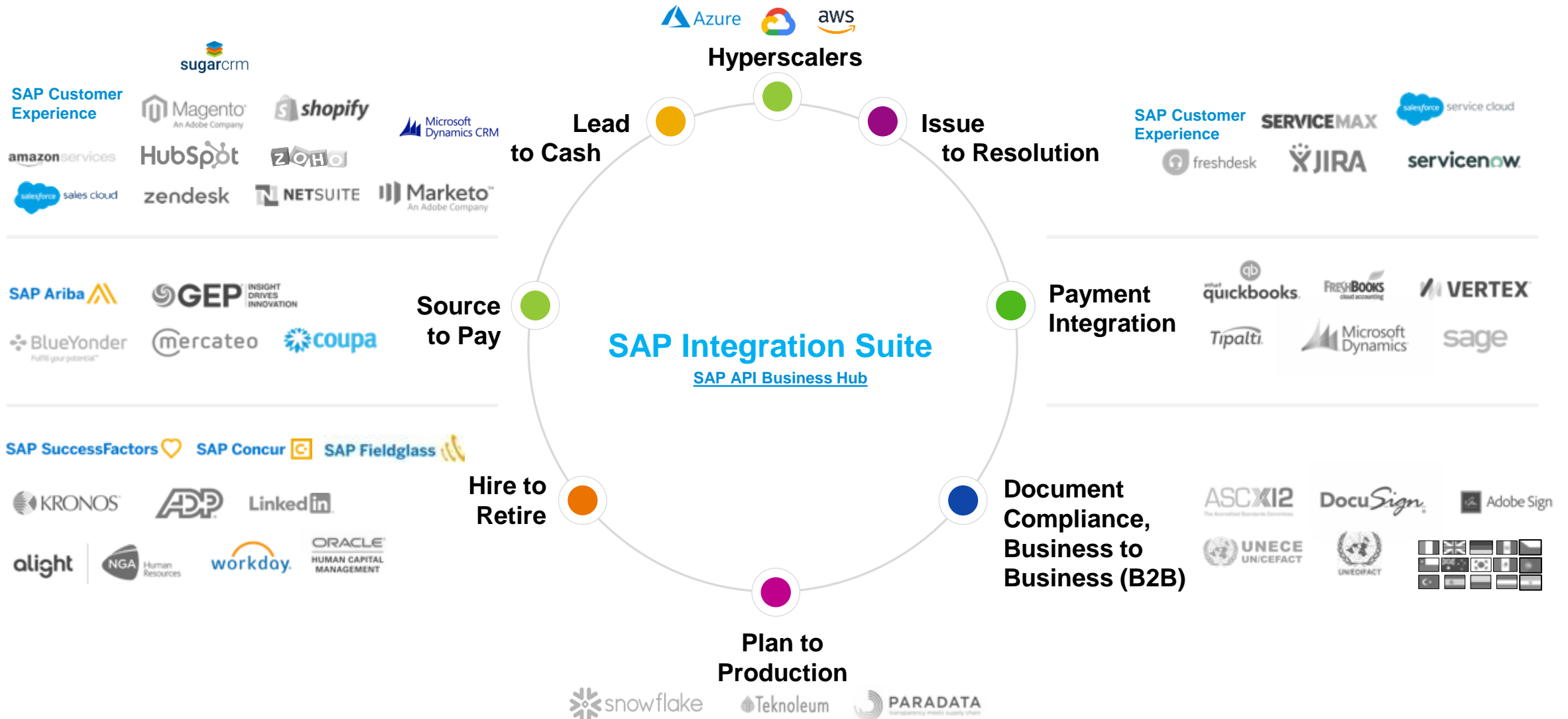
Pre-built Integrations

170+

Open Connectors

165

Business Events





# Reduce integration development effort

## Import and Reuse mapping from ESR

1

Required roles to import and export ESR content  
(SAP\_XI\_ADMINISTRATOR or SAP\_XI\_CONTENT\_ORGANIZER)

2

Configure your Cloud Connector for the ESR system

3

Import and Reuse content from ESR

Content supported:

- Message Mappings
- Operation Mappings
- Service Interfaces

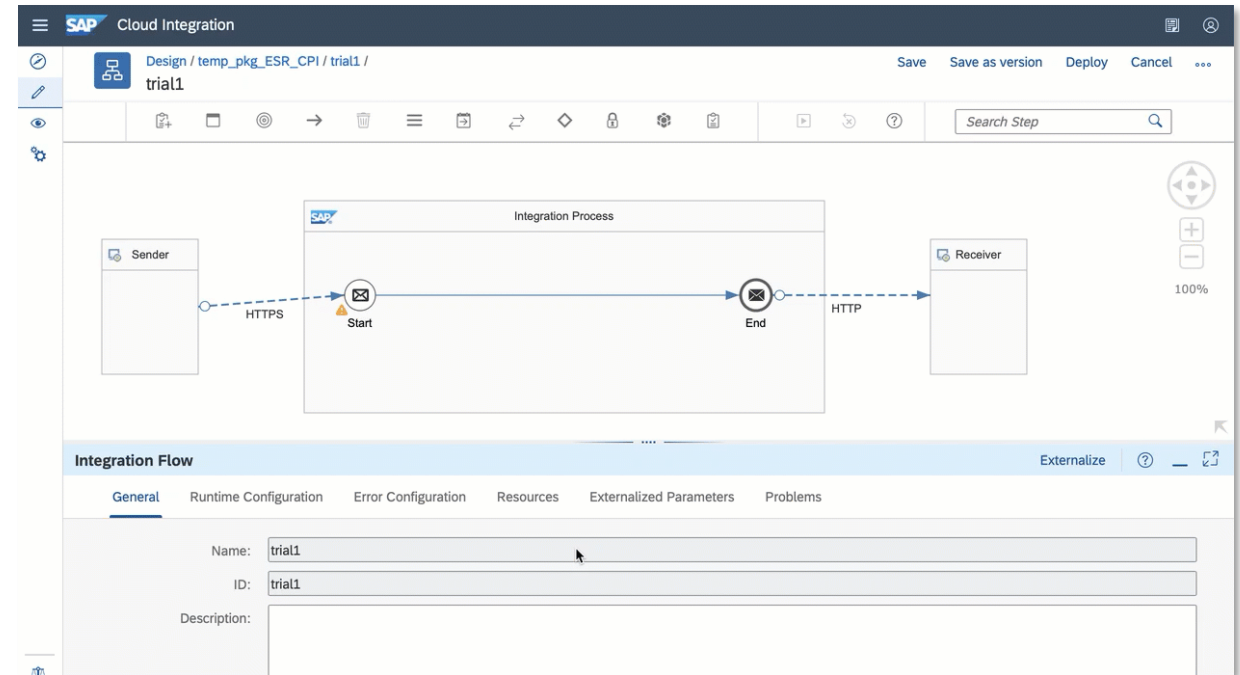
*Note: ESR version 7.3 and onwards is supported.*

[Blog: Importing Message Mapping from ES Repository in SAP Cloud Integration](#)

Troubleshoot: [SAP Note 2681589](#)

Restrictions apply in import capability : [SAP Help Documentation](#)

The screenshot shows the 'ES Repository' configuration page in the SAP Cloud Integration console. The page has a header with 'SAP Cloud Integration' and a navigation bar with tabs: 'Product Profiles', 'Transport', 'ES Repository' (selected), 'Custom Tags', and 'Malware Scanner'. On the left is a sidebar with icons for search, edit, view, and settings. The main area contains four input fields: 'Name: \*', 'Address: \*', 'Credential Name:', and 'Location ID:'. Each field has a corresponding text input box.



# Integration Flow Guidelines and Enterprise Integration Patterns

Comprehensive set of guidelines and pattern descriptions available for SAP Cloud Integration

## Guidelines to model Enterprise-Grade Integration Flows

- 30+ integration flows
- 3 application specific guidelines (SuccessFactors, API Management)
- See [Documentation](#) or [API Business Hub](#)

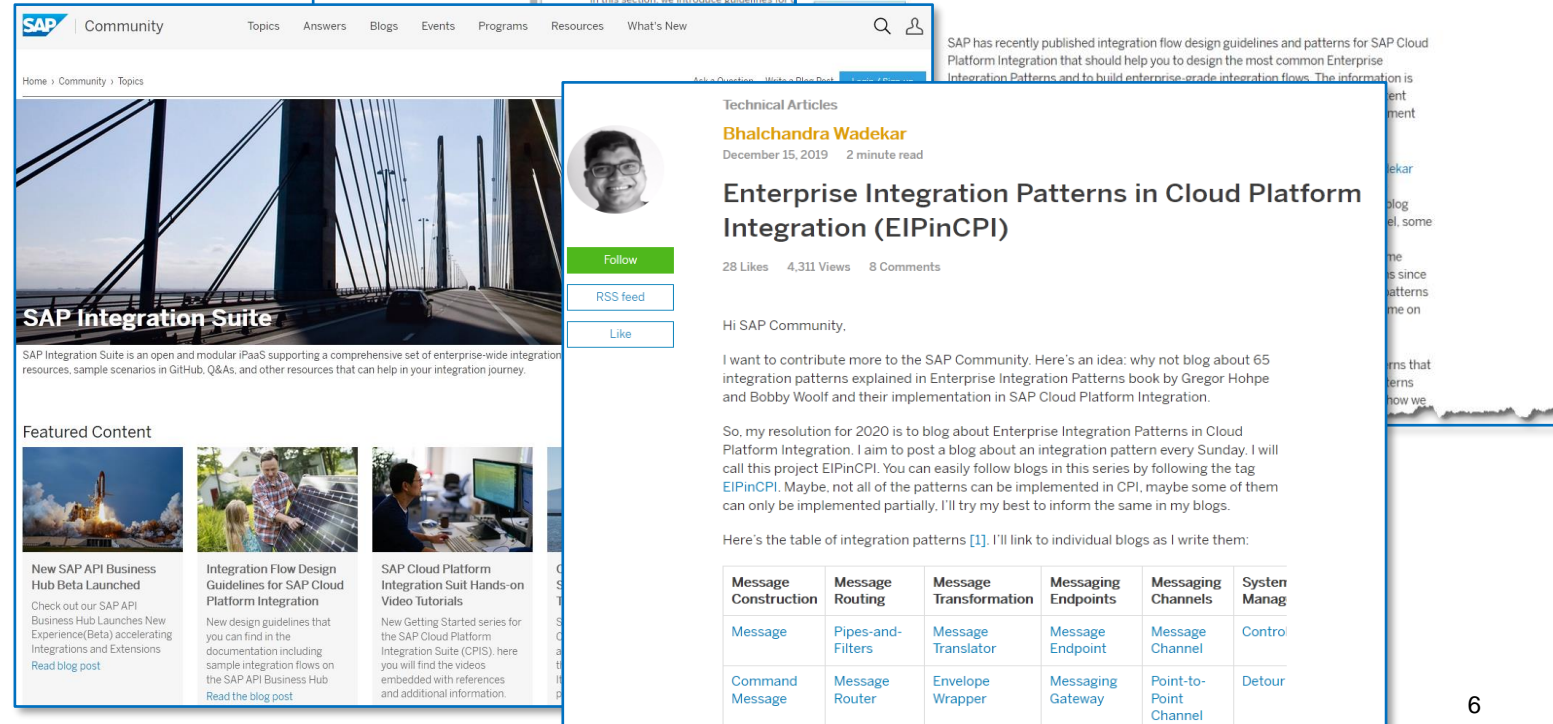
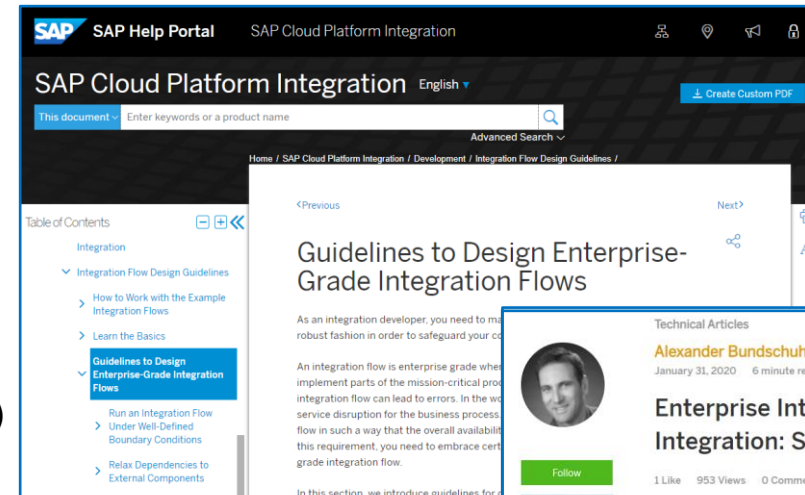
## Enterprise Integration Patterns

- E.g. aggregator, scatter-gather, splitter
- 9 patterns, 15 integration flows
- [Blog series](#)

## Enterprise Integration Pattern Community

- 60+ Enterprise Integration Patterns implemented with Cloud Integration
- [Overview blog](#)

## Huge & active Community



# Hybrid integration today

Build new agile integrations with SAP Integration Suite

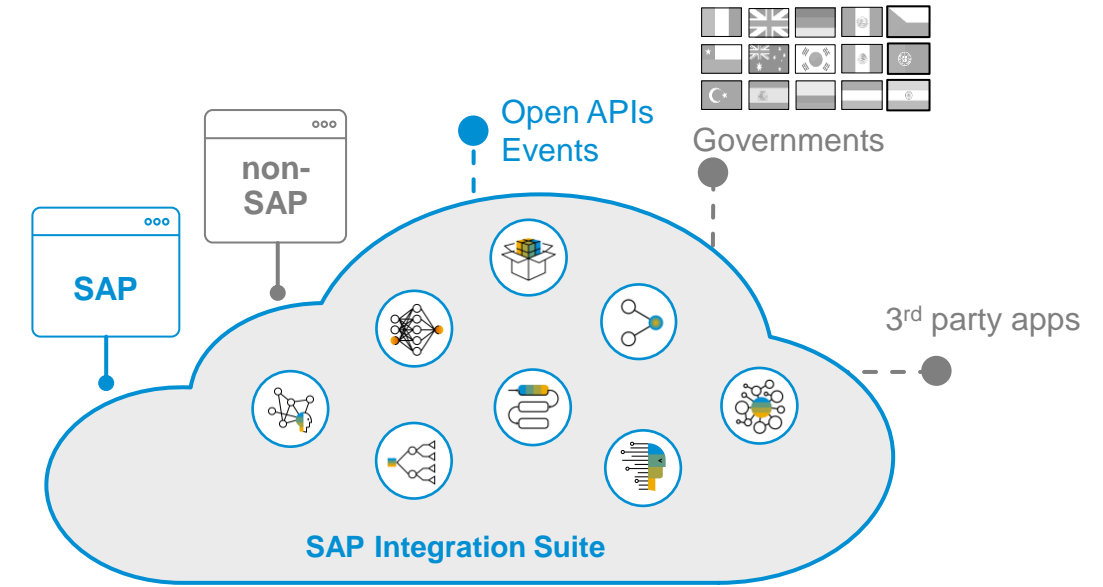
Use SAP Integration Suite for

- Cloud and hybrid process integration needs
- Data integration
- API-based integrations
- Event-driven, extensible integrations

Leverage open connectors supporting non-SAP to non-SAP integration scenarios

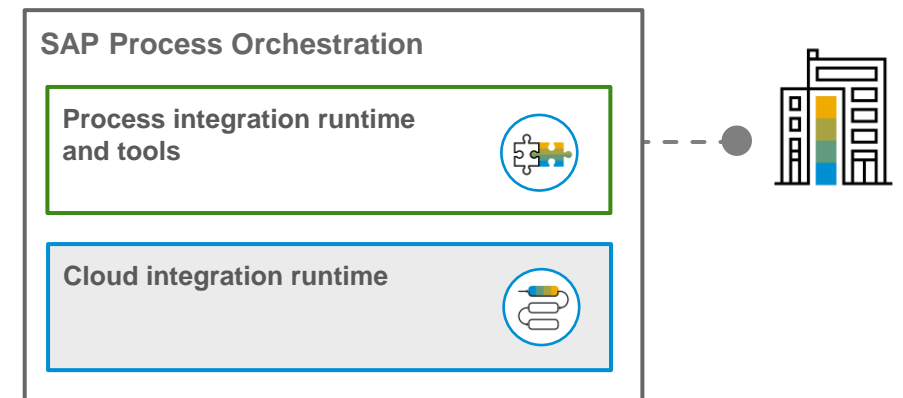
Accelerate your integration projects using prebuilt integration packs at [SAP API Business Hub](#)

Build new ground-to-ground integration on [cloud integration runtime](#) inside SAP Process Orchestration software



Cloud

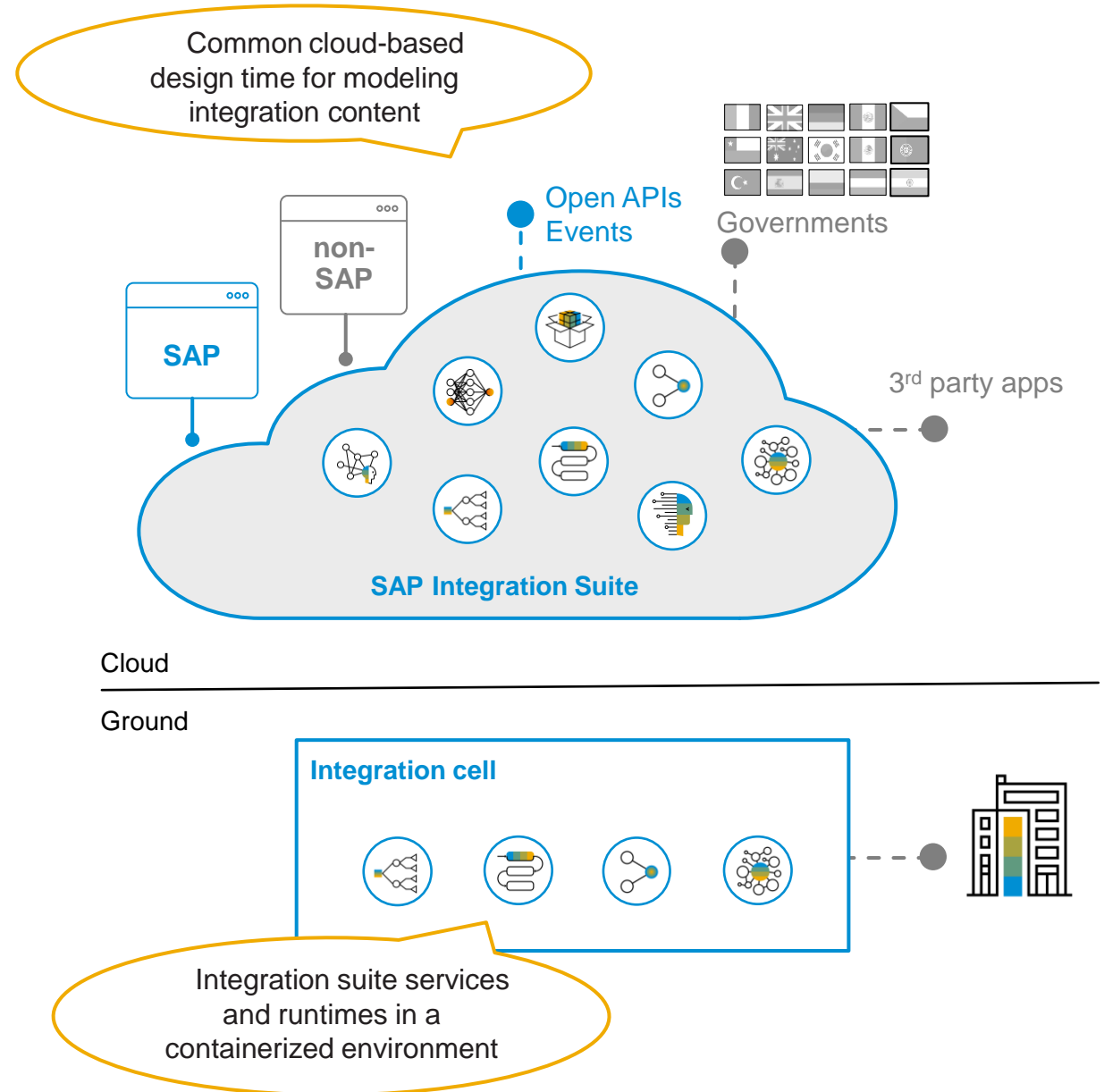
Ground



# The path ahead

## The hybrid integration platform of choice for SAP customers

- Multi-cloud and hybrid deployment flexibility
- Lightweight runtime planned:
  - Design, configuration, and monitoring on the cloud
  - Runtime leveraging container technology such as Docker
  - Runtime holding any SAP Integration Suite services or engines
  - Software lifecycle in sync with cloud delivery speed
- Tools provided for seamless migration from SAP Process Orchestration to the new hybrid integration platform







Intelligent Enterprises are Integrated Enterprises

# Demo

- Lower TCO + High ROI with prebuilt integrations
- Reuse of SAP PO artifacts in SAP Integration Suite

EXTERNAL

# Thank you.

Contact: Arti Gopalan

[arti.gopalan@sap.com](mailto:arti.gopalan@sap.com)

Product Management - SAP Integration Suite