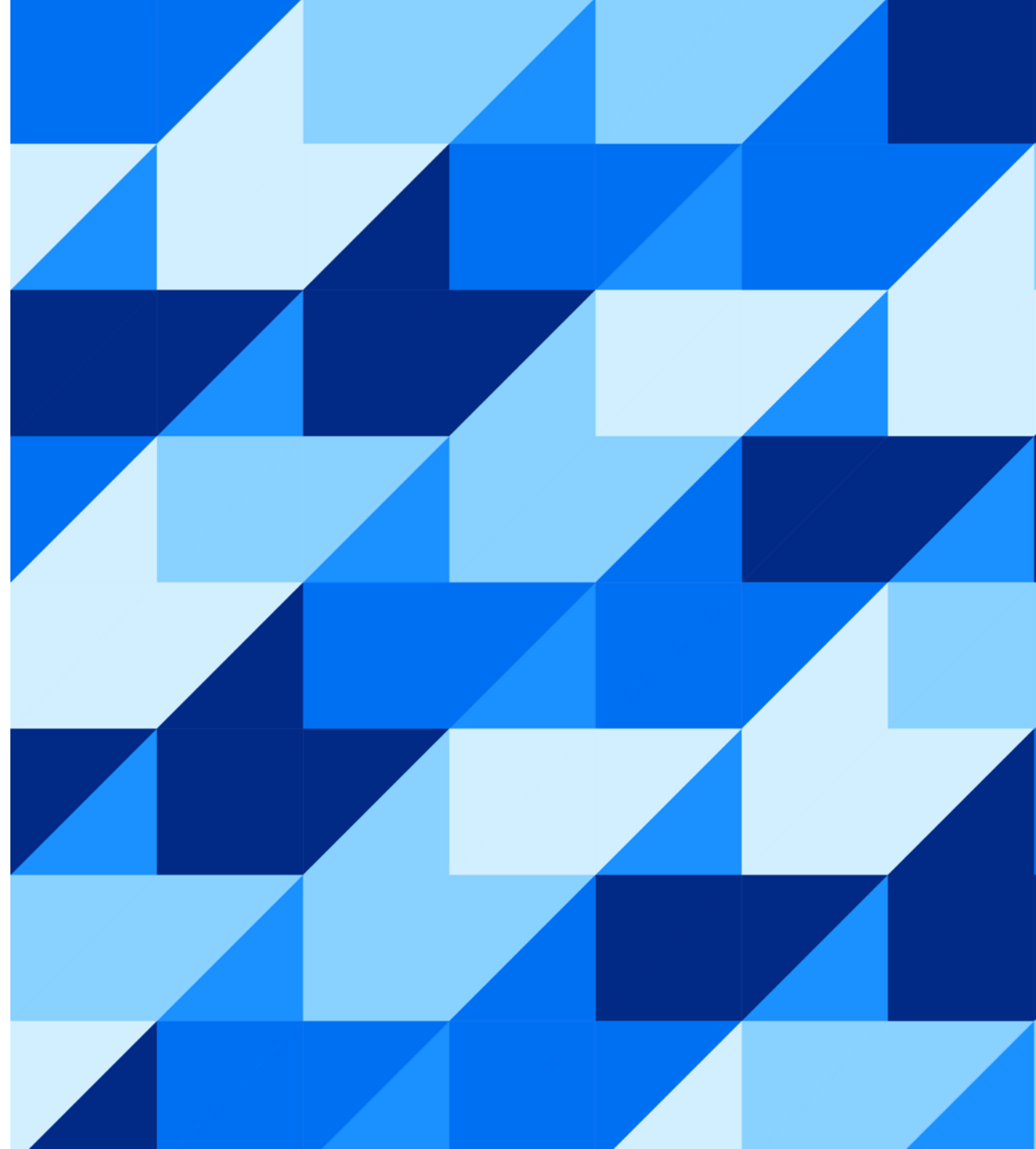


# Migrating ESR Proxy Interfaces from SAP PI/PO to SAP Integration Suite

Raj Chintam, SAP  
Daniil Bolobonov, SAP

Public



# Agenda

**1**

Kick-off

Toros Aledjian, SAP

---

**2**

Introduction to tools and resources available to support migration from SAP Process Orchestration to SAP Integration Suite

Daniil Bolobonov, SAP

---

**3**

Configuration steps and demo of migrating ESR Proxies from SAP Process Orchestration to SAP Integration Suite

Raj Chintam, SAP

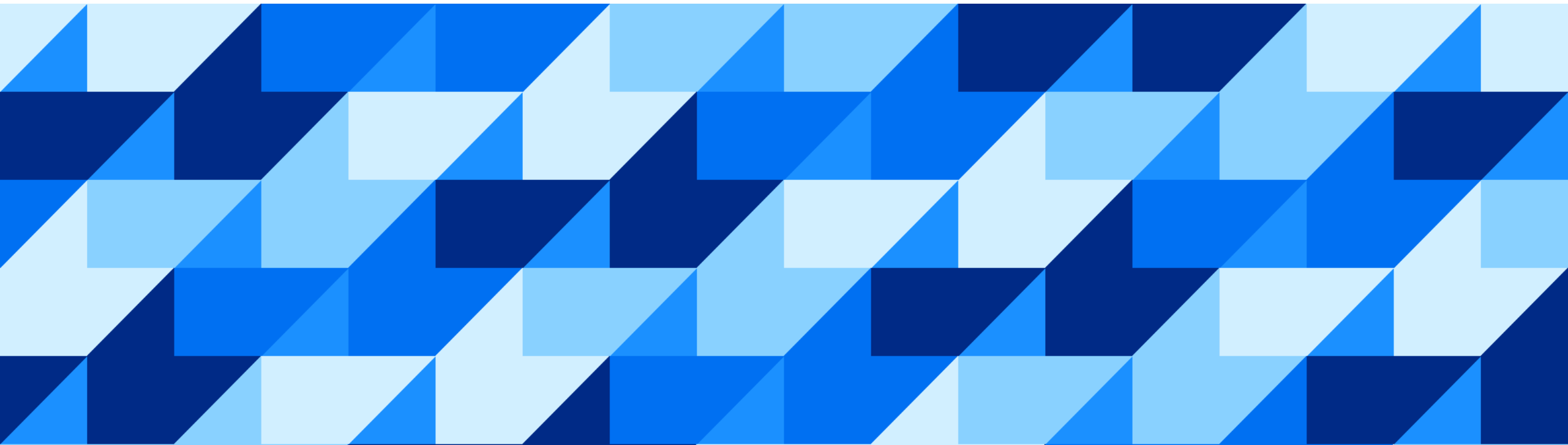
---

**4**

Q&A

Raj Chintam & Daniil Bolobonov, SAP

# Tools and resources supporting migration from SAP PI/PO to SAP Integration Suite



# SAP's investment in integration

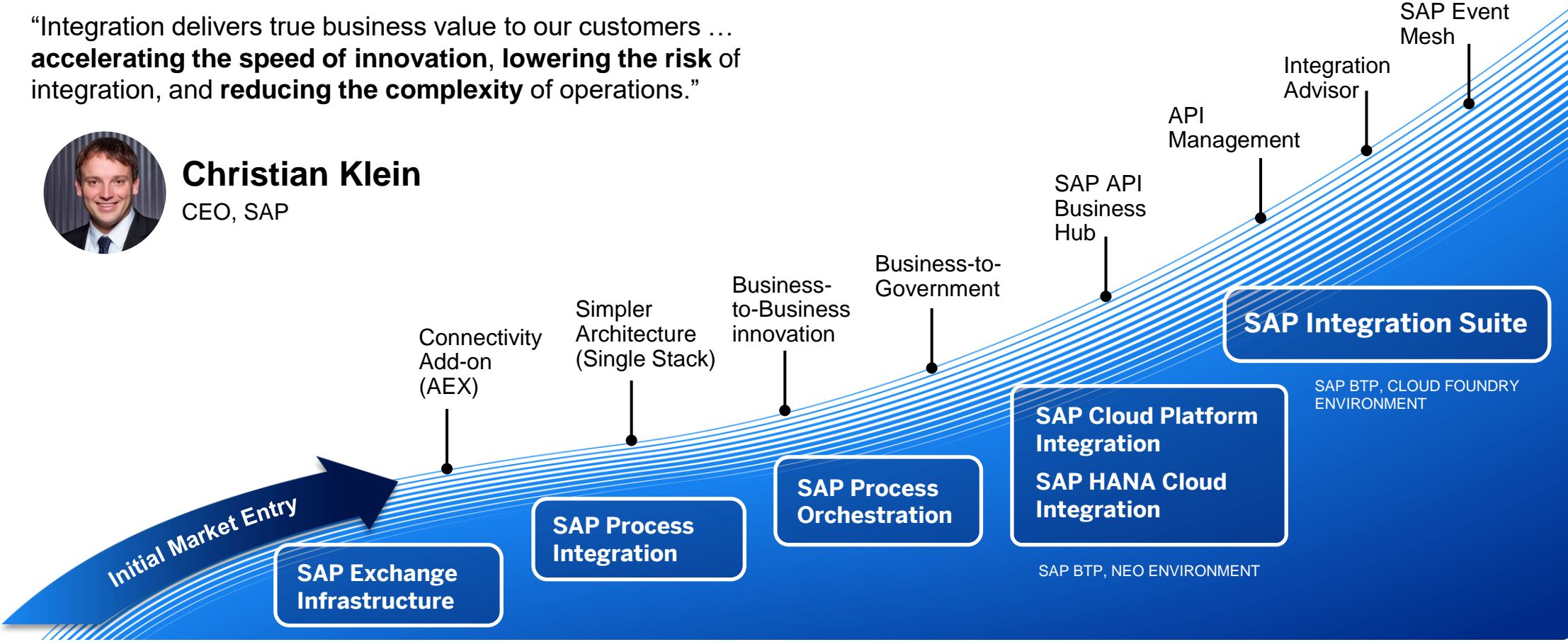
## A history of continuous innovation

“Integration delivers true business value to our customers ... accelerating the speed of innovation, lowering the risk of integration, and reducing the complexity of operations.”



**Christian Klein**  
CEO, SAP

CUSTOMER VALUE



2003

TODAY

# Smooth migration to the cloud from SAP Process Orchestration

## Interface migration strategy

### SAP Process Orchestration

The screenshot shows the 'Integrated Configuration' window for a receiver. It includes fields for Sender (Communication Party, Component, Interface, Namespace) and Receiver (Communication Party, Component, Description). Below these are tabs for Inbound Processing, Receiver, Receiver Interfaces, Outbound Processing, Assigned Users, and Advanced Settings. The 'Receiver' tab is active, showing 'Type of Receiver Determination' (Standard) and a table of 'Configured Receivers'.

Rule	Condition	Communication Party	Communication Component *
Local Rule	(p1:PersonIn/Country = DE)		REC_1_TST
	(p1:PersonIn/Country = FR)		REC_2_TST

At the bottom, there are options for 'If No Receiver Is Found, Proceed as Follows': Error Message, Ignore, or Select the Following Receiver (with fields for Communication Party and Component).

Integrated configuration

On premise

### SAP offerings

Guides and best practices

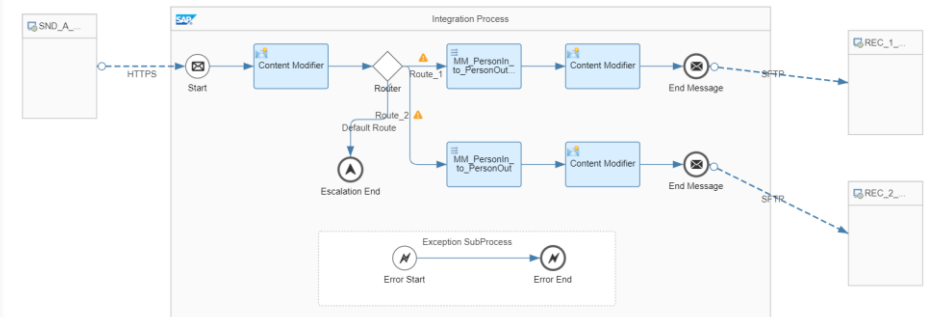
Automatic assessment

Semiautomatic migration

Edge Integration Cell

Regression test tool from partner

### SAP Integration Suite



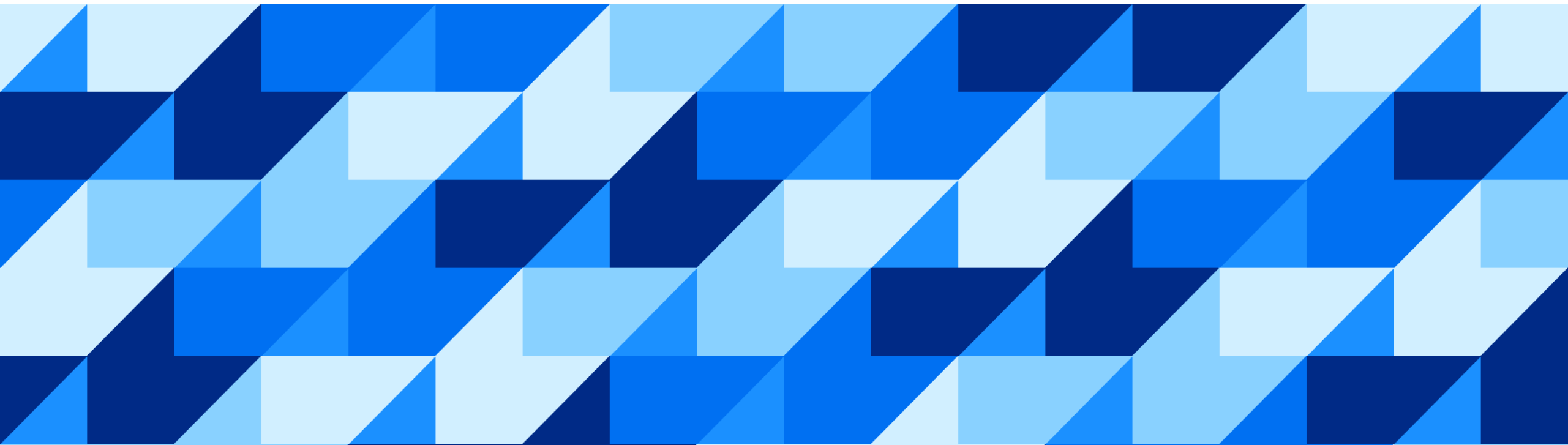
Integration flow

Cloud

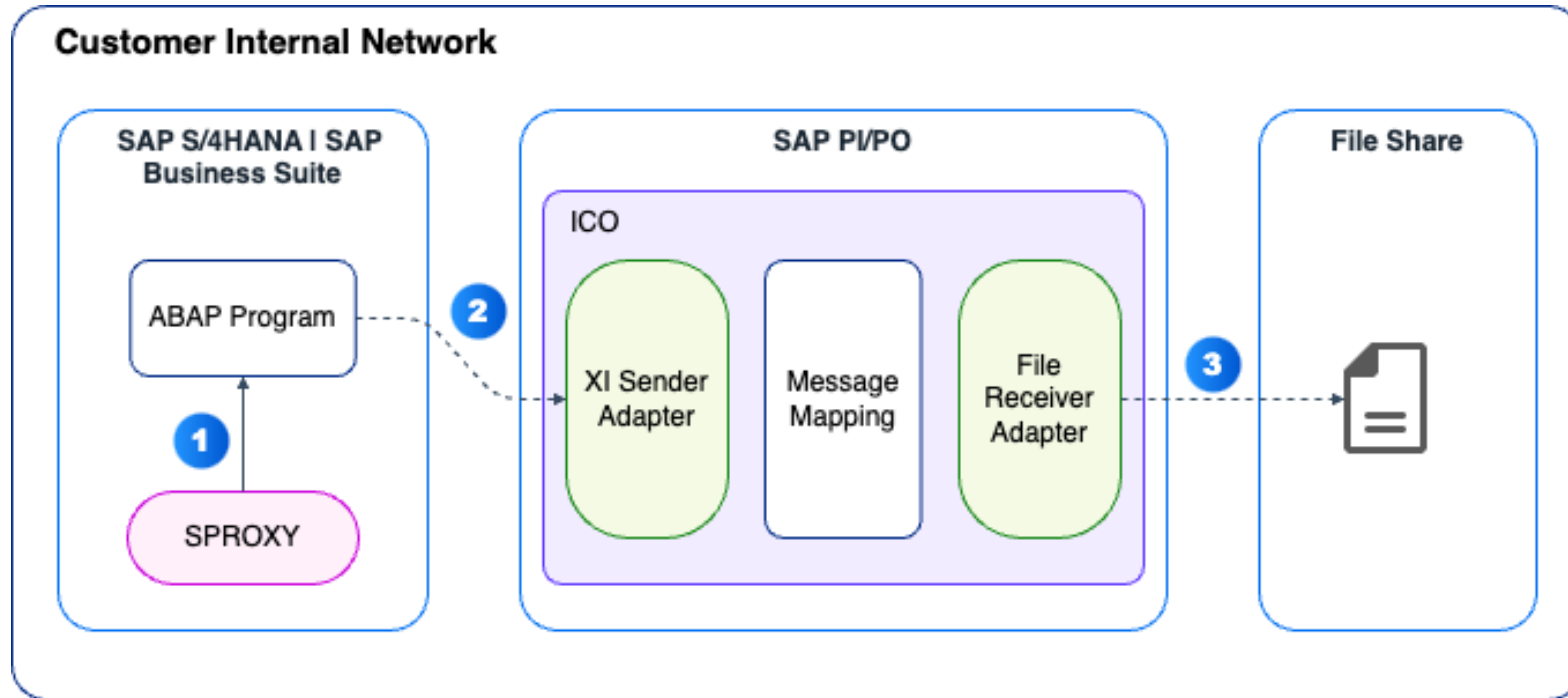


[Migration guide for SAP Process Orchestration](#) | [Design guidelines and patterns](#) | [Edge Integration Cell](#) | [Partner solutions](#) from Figaf and INT4 offering regression test tools | Services: [SAP migration factory](#) for assessment and planning and [SAP Services and Support](#): for assessment and planning, infrastructure setup, and implementation

# Migrating ESR Proxies Interfaces from SAP PI/PO to SAP Integration Suite



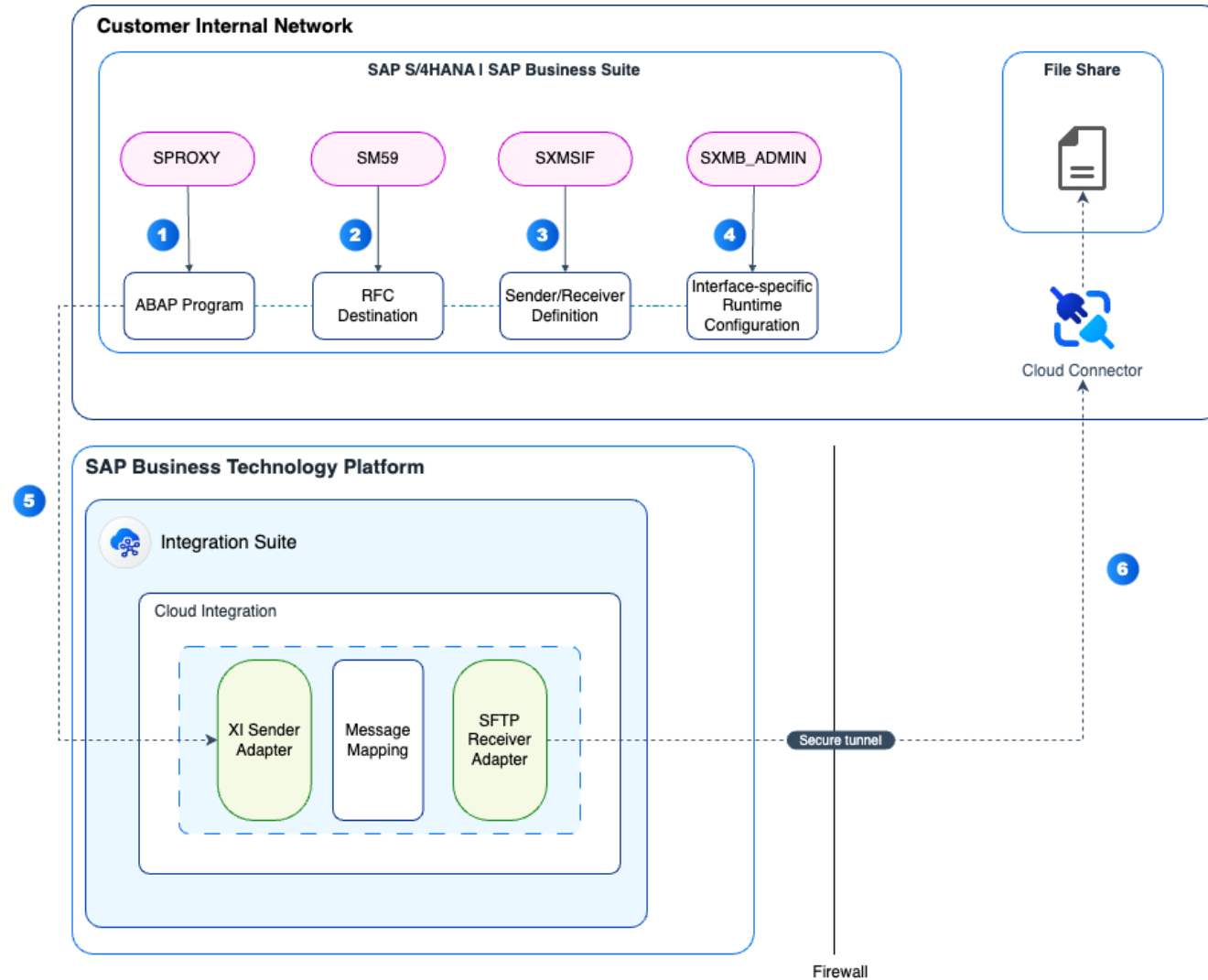
# Configuration steps when using SAP PI/PO



## Configuration Steps

- 1** ABAP Class is generated via SPROXY transaction
- 2** ABAP Program uses ABAP Class to send XI call to SAP PI/PO Service Interface
- 3** File is stored in the local File Share with the help of File Receiver Adapter

# Configuration steps when using SAP Integration Suite



## Configuration Steps

- 1 ABAP Class is generated via SPROXY transaction
- 2 Create RFC destination for outbound communication to Cloud Integration endpoint
- 3 Create a sender/receiver definition
- 4 Configure the interface-specific runtime
- 5 ABAP Program uses ABAP Class to send XI call to trigger Cloud Integration iFlow
- 6 File is stored in the local File Share with the help of SFTP Receiver Adapter



[Migrating Proxy Interfaces | SAP Help Portal](#)

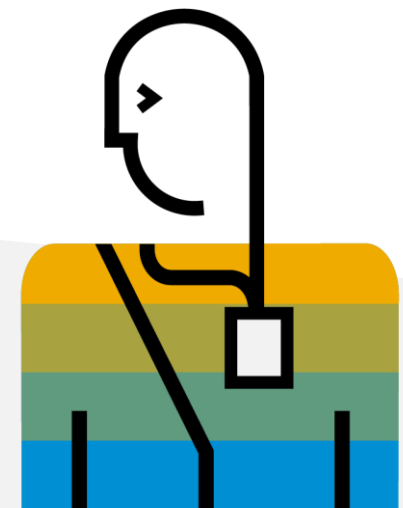
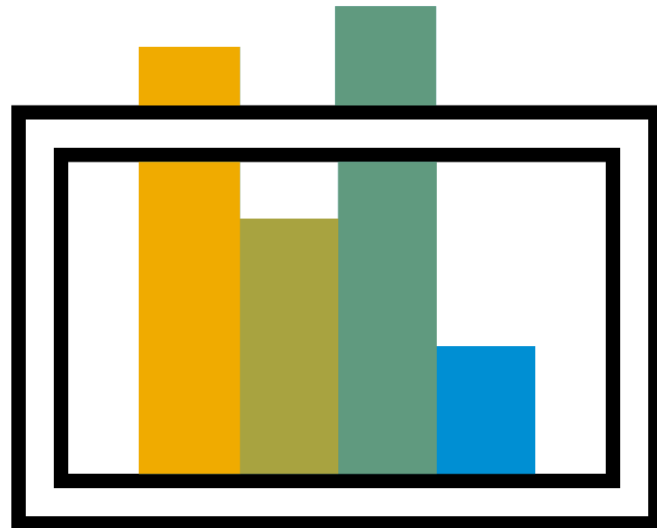


# Known Limitations

Limitations	Workaround
ABAP Proxy generation using transaction SPROXY on the SAP system is not supported if you're using Cloud Integration.	<ul style="list-style-type: none"><li>• Use the Enterprise Services Repository to create or update ABAP proxies, but run these interfaces on Cloud Integration.</li><li>• Migrate your existing proxy, if possible, or create a new proxy interface using Metadata Repository (MDR).</li><li>• Maintain your WSDL on your preferred tool and import them through transaction SE80.</li></ul>
Acknowledgement is not supported.	There's currently no workaround for this limitation.
ExactlyOnceInOrder (EOIO) is not supported.	A custom solution can be built to read the messages from a data store and based on their entry sequence, using for instance a timestamp and/or sequence ID, deliver the message in order.
There is a limit on the JMS resources.	Analyze your landscape and according to the expected usage of the resources and decide on the number of queues, consumers, etc. See <a href="#">JMS Resource Limits and Optimizing their Usage</a> .

# Demo

Configuration steps in SAP S/4HNANA and SAP Integration Suite for migrating SAP PI/PO interfaces that involve ESR proxies





**Q & A**

# Thank you.

Contact information:

Raj Chintam  
raj.chintam@sap.com

Daniil Bolobonov  
daniil.bolobonov@sap.com

