



# Driving Efficiencies and Business Outcomes with SAP Analytics

Anitha Swaminathan, Pembina Pipeline Corporation

April 11, 2023

Public



# Company Information

**Company Name** Pembina Pipeline Corporation

**Headquarters** Calgary, Canada

**Industry** Oil and Gas

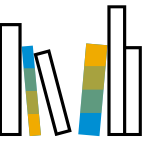
**No of Employees** 2700

**Web Site** [www.pembina.com](http://www.pembina.com)

Pembina Pipeline Corporation is a leading energy transportation and midstream service provider that has served North America's energy industry for more than 65 years. Pembina owns an integrated network of hydrocarbon liquids and natural gas pipelines, gas gathering and processing facilities, oil and natural gas liquids infrastructure and logistics services, and a growing export terminals business.

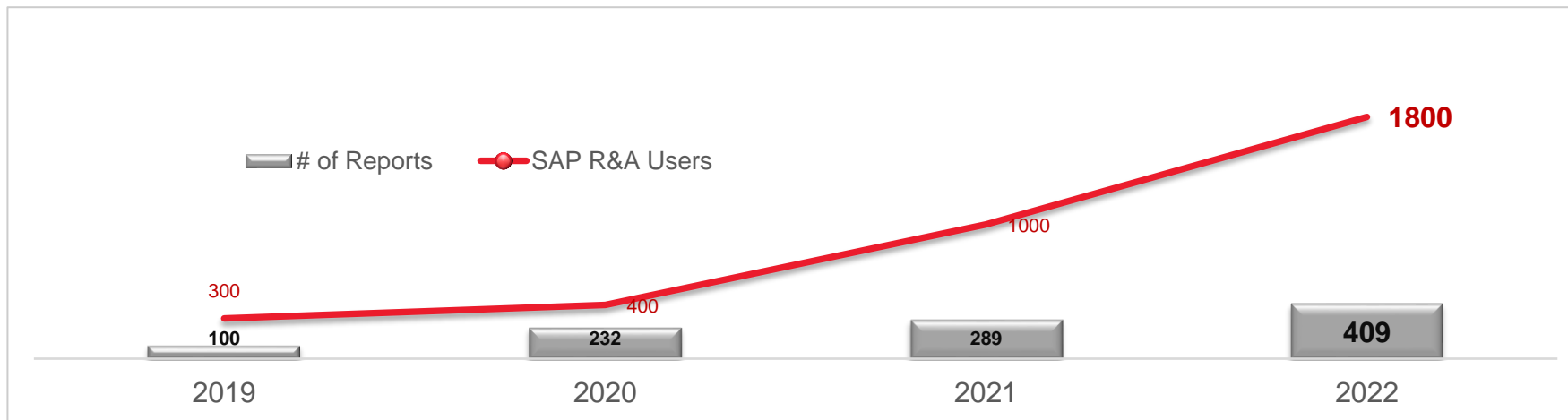
Through our integrated value chain, we seek to provide safe and reliable infrastructure solutions which connect producers and consumers of energy across the world, support a more sustainable future and benefit our customers, investors, employees and communities.

Pembina is constantly evolving by leveraging advanced technologies that integrate with our business processes. SAP Analytics platforms have helped build an intelligent, sustainable enterprise by enabling Pembina to employ tools across various Lines of Business that embed digital practices into the core of our business operations & strategy .



# History of SAP Reporting & Analytics at Pembina

2019	2020	2021	2022	2023
<ul style="list-style-type: none"><li>➤ S/4HANA</li><li>➤ Finance Reports – P1</li></ul>	<ul style="list-style-type: none"><li>➤ BW/4HANA &amp; SAC</li><li>➤ Finance Reports - P2</li><li>➤ Work Force Planning</li></ul>	<ul style="list-style-type: none"><li>➤ Project Reporting (PS, PPM)</li><li>➤ Long Range Planning</li><li>➤ Supply Chain Analytics Exploratory Phase</li></ul>	<ul style="list-style-type: none"><li>➤ Supply Chain Analytics</li><li>➤ HCM Analytics Including SuccessFactors</li><li>➤ Plant Maintenance Reports</li></ul>	<ul style="list-style-type: none"><li>➤ BW7.5 Migration to BW/4HANA</li><li>➤ Analytics Operating Model</li><li>➤ DWC POC</li><li>➤ BPC Roadmap Alignment</li><li>➤ ESG Reporting</li><li>➤ Predictive Analytics</li><li>➤ Digital Boardroom</li></ul>



# Driving Efficiencies and Business Outcomes with SAP Analytics



## Pembina Pipeline

### Challenge

- Users faced challenges driving insights as data was dispersed across systems and lines of business, and they lacked access to live data.
- The reports where users made decisions were disjointed from the processes where the actions were being made.

### Solution

- Adopted BW/4HANA and SAC to unify Finance, Supply Chain, HR, Projects and Plant Maintenance data, using real-time replication from S/4 to BW4/HANA
- Implemented SAP Analytics Cloud to empower self-service reporting and enable collaboration.

### Outcome

- Transformed Pembina into a data-literate organization, that operates at the intersection between actions and insights.
- This is changing the way data is used to drive business outcomes. With the evolving architecture, today SAP Users have access to modern analytics.

**80%**

YoY increase in SAP Analytics Cloud and Analysis for office user base

**111%**

YoY increase in number of reports available to business users

**\$1M**

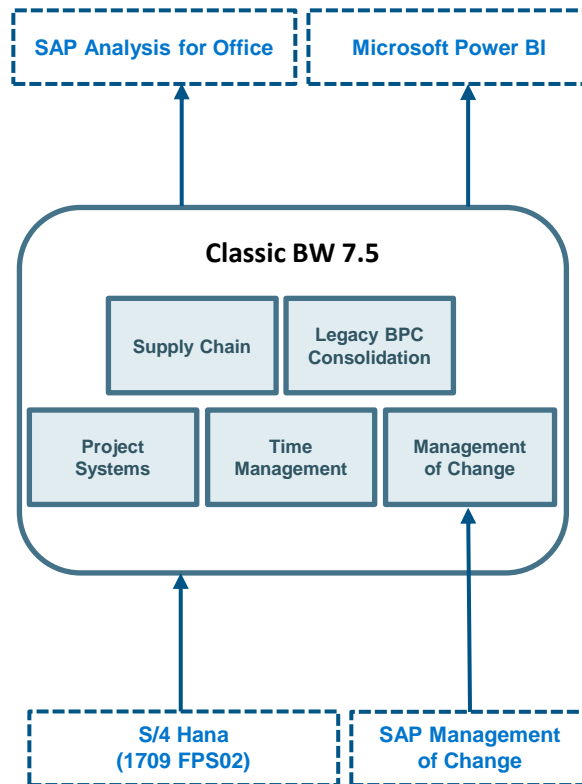
Savings realized in 2022



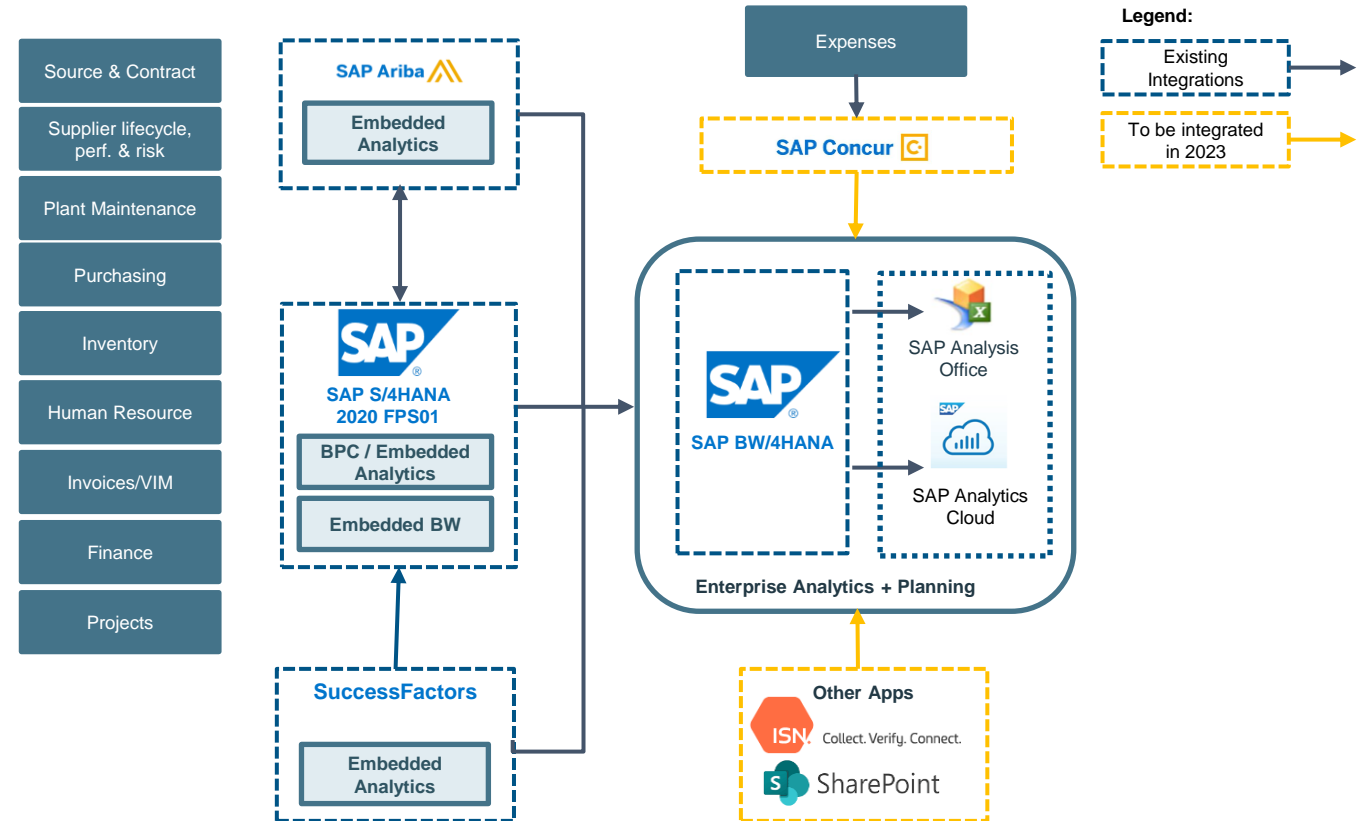


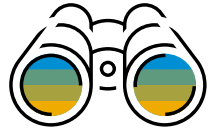
# Architecture

Before



After





# Project or Use Case Details

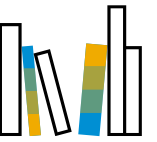
---

## Process Before

- Limited ability to drive your own insights
- Performance challenges
- Time-consuming efforts for reconciliation
- Siloed requests and low reusability of content
- Inadequate to no dashboard capabilities

## Process After

- Insight to action
- Shared single source of truth for data
- Availability of real-time data on demand
- Central repository for SAC dashboards and AO reports
- Empowered users with the skills for self-serve analytics
- Improved collaboration with team members (sharing, discussions)



# Pembina's SAP R&A Approach to Delivery

## Capabilities



### Real Time Data

#### Drive Insight-to-Action

- Used SLT for real time replication from S4 to BW4
- Jump from a dashboard right into SAP processes to make quick updates



### Integration with S/4HANA and other sources

#### Tap into the SAP Datasets and enhance

- BW/4HANA brings in data from S/4HANA and has the ability to merge with 3<sup>rd</sup> Party data and peripheral systems.
- Our team is continually enhancing the data available in BW/4HANA (e.g., Ariba, Concur, ISN)

## Effective Delivery



### Agile Methodology

#### Adaptable Delivery Method

- Using agile to deliver analytic solutions provides a more adaptable approach that is scalable.
- Reporting requirements are prioritized by the business into a backlog, prioritized with changing business needs.
- Reports are tested and approved by the business as they are developed.

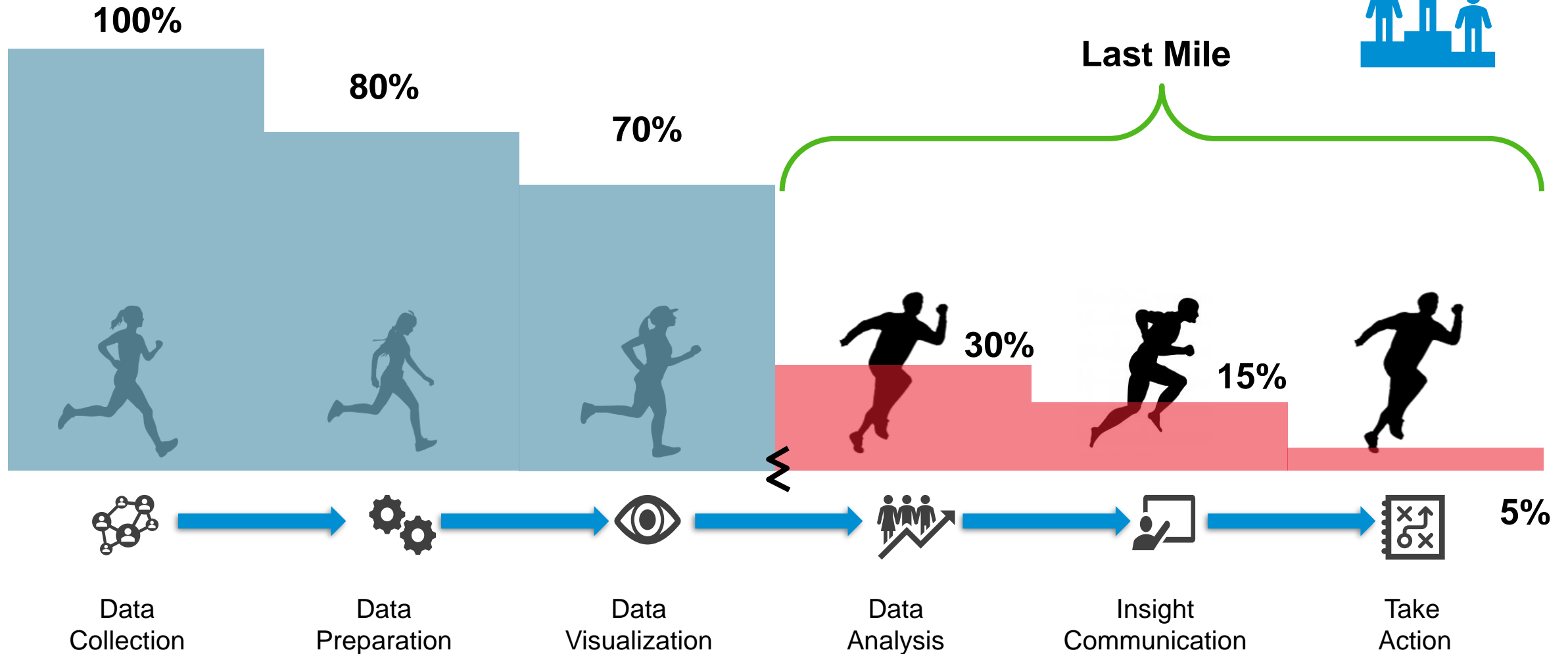


### Change Management & Training

#### Collaborate & Empower Users for Self-Serve Analytics

- Collaborate with Business users to ensure successful delivery
- Enable self-serve solutions by training users on the functionality of SAP Analytics Cloud (SAC) and Analysis for Office (AO)

# Data Analytics Marathon “Focus on the Finish”



Ref: <https://www.forbes.com/sites/brentdykes/2022/01/12/data-analytics-marathon-why-your-organization-must-focus-on-the-finish/>